

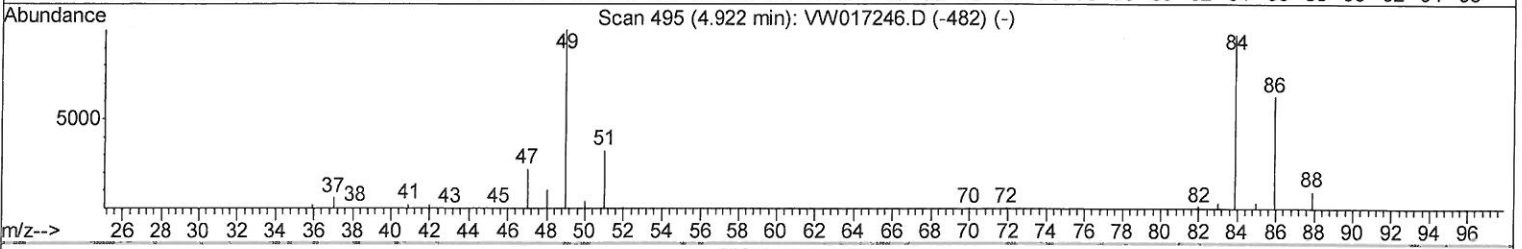
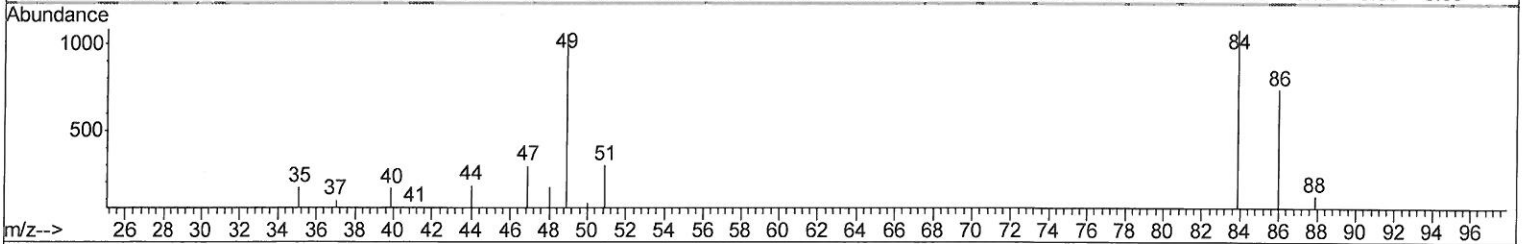
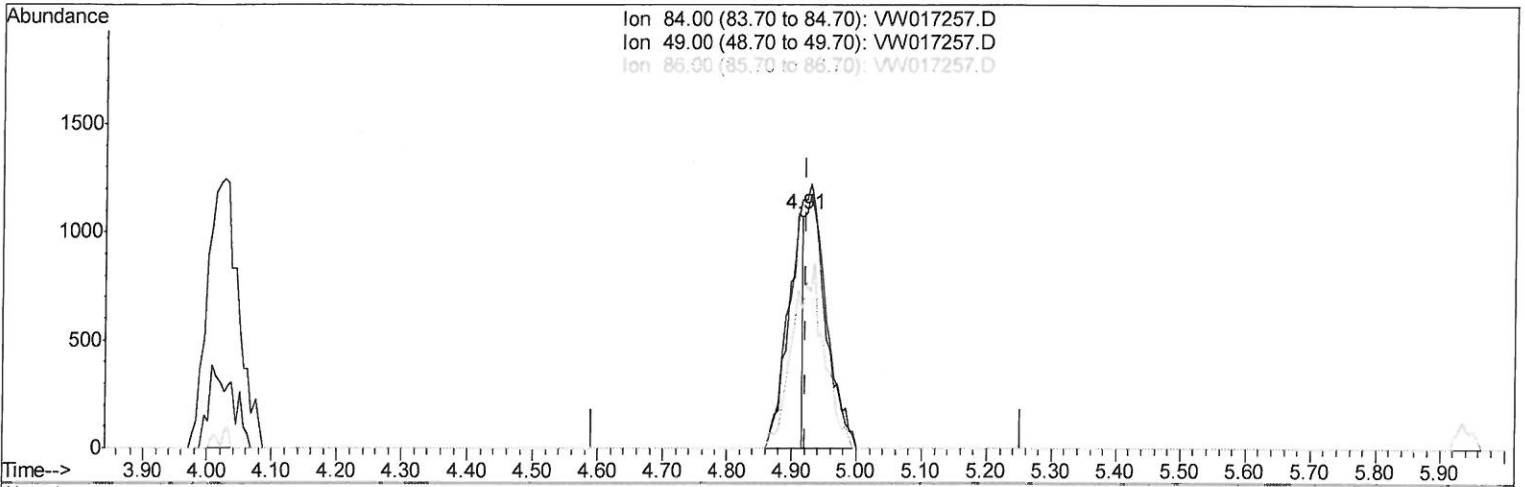
Quantitation Report (Qedit)

Data Path : Z:\VOASRV\HPCHEM1\MSVOA W\DATA\VW111620\
 Data File : VW017257.D
 Acq On : 16 Nov 2020 15:20
 Operator : SY/VA
 Sample : L4739-13
 Misc : 6.74G/10ML/MSVOA W/SOIL
 ALS Vial : 14 Sample Multiplier: 1

Instrument :
 MSVOA_W
Client Sampled :
 GB100

Manual Integrations
APPROVED
 MMDadoda
 11/17/2020 6:53:39 PM

Quant Time: Nov 17 06:11:14 2020
 Quant Method : Z:\VOASRV\HPCHEM1\MSVOA_W\METHOD\SOM2WLM110420S.M
 Quant Title : VOC Analysis
 QLast Update : Tue Nov 17 06:08:23 2020
 Response via : Initial Calibration



TIC: VW017257.D

(16) Methylene chloride (T)

4.909min (-0.012) 0.34ug/L

response 1823

Ion	Exp%	Act%
84.00	100	100
49.00	103.30	97.70
86.00	64.40	67.86
0.00	0.00	0.00

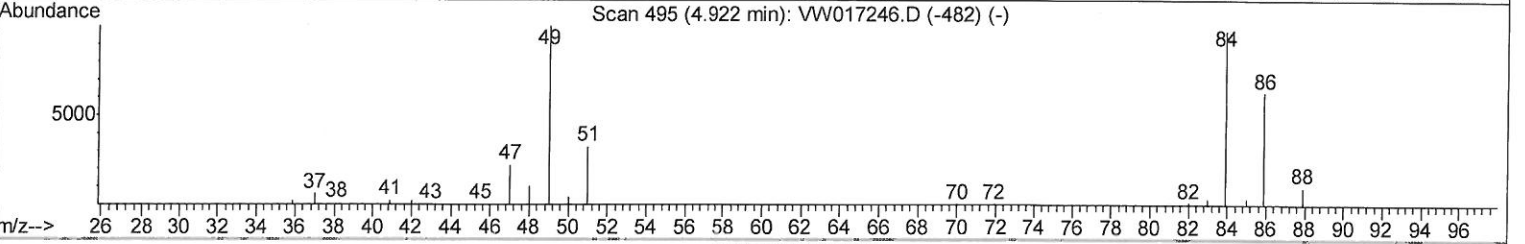
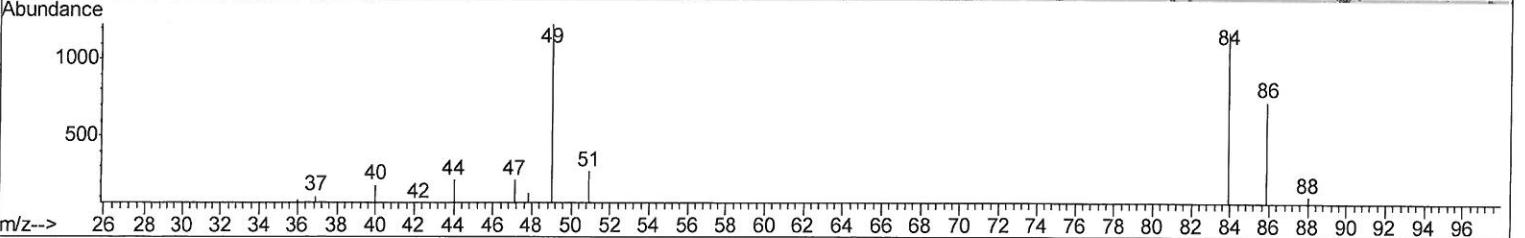
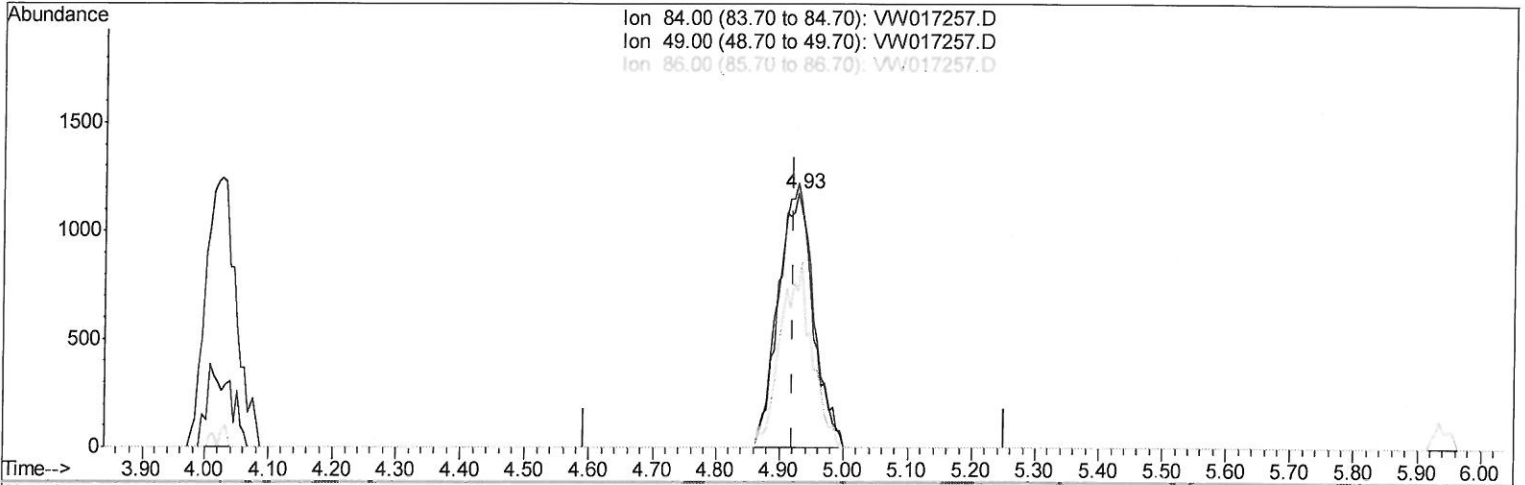
Quantitation Report (Qedit)

Data Path : Z:\VOASRV\HPCHEM1\MSVOA W\DATA\VW111620\
 Data File : VW017257.D
 Acq On : 16 Nov 2020 15:20
 Operator : SY/VA
 Sample : L4739-13
 Misc : 6.74G/10ML/MSVOA W/SOIL
 ALS Vial : 14 Sample Multiplier: 1

Instrument :
 MSVOA_W
Client Sampled :
 GB100

Manual Integrations
APPROVED
 MMDadoda
 11/17/2020 6:53:39 PM

Quant Time: Nov 17 06:11:14 2020
 Quant Method : Z:\VOASRV\HPCHEM1\MSVOA_W\METHOD\SOM2WLM110420S.M
 Quant Title : VOC Analysis
 QLast Update : Tue Nov 17 06:08:23 2020
 Response via : Initial Calibration



TIC: VW017257.D

(16) Methylene chloride (T)

4.928min (+0.006) 0.85ug/L m

Handwritten note: 11/18/20 sy

response 4525

Ion	Exp%	Act%
84.00	100	100
49.00	103.30	104.25
86.00	64.40	61.82
0.00	0.00	0.00

Data Path : Z:\VOASRV\HPCHEM1\MSVOA W\DATA\VW111620\
 Data File : VW017257.D
 Acq On : 16 Nov 2020 15:20
 Operator : SY/VA
 Sample : L4739-13
 Misc : 6.74G/10ML/MSVOA W/SOIL
 ALS Vial : 14 Sample Multiplier: 1

Instrument :
 MSVOA_W
 Client Sampled :
 GB100

Manual Integrations
 APPROVED

MMDadoda
 11/17/2020 6:53:39 PM

Quant Time: Nov 17 06:59:05 2020
 Quant Method : Z:\VOASRV\HPCHEM1\MSVOA_W\METHOD\SOM2WLM110420S.M
 Quant Title : VOC Analysis
 QLast Update : Tue Nov 17 06:08:23 2020
 Response via : Initial Calibration

Internal Standards	R.T.	QIon	Response	Conc	Units	Dev(Min)
1) 1,4-Difluorobenzene	8.84	114	394802	25.00	ug/L	0.00
28) Chlorobenzene-d5	11.63	117	347494	25.00	ug/L	0.00
60) 1,4-Dichlorobenzene-d4	13.56	152	139848	25.00	ug/L	0.00

System Monitoring Compounds

4) Vinyl Chloride-d3	2.36	65	92880	18.68	ug/L	0.00
Spiked Amount	25.000	Range 30 - 150	Recovery	=	74.72%	
7) Chloroethane-d5	2.89	69	80707	21.06	ug/L	0.00
Spiked Amount	25.000	Range 30 - 150	Recovery	=	84.24%	
10) 1,1-Dichloroethene-d2	4.02	63	140227	15.77	ug/L	0.00
Spiked Amount	25.000	Range 45 - 110	Recovery	=	63.08%	
20) 2-Butanone-d5	7.08	46	58522	52.63	ug/L	0.00
Spiked Amount	50.000	Range 20 - 135	Recovery	=	105.26%	
24) Chloroform-d	7.65	84	222687	24.16	ug/L	0.00
Spiked Amount	25.000	Range 40 - 150	Recovery	=	96.64%	
26) 1,2-Dichloroethane-d4	8.31	65	125754	27.44	ug/L	0.00
Spiked Amount	25.000	Range 70 - 130	Recovery	=	109.76%	
29) Benzene-d6	8.27	84	418230	23.63	ug/L	0.00
Spiked Amount	25.000	Range 20 - 135	Recovery	=	94.52%	
33) 1,2-Dichloropropane-d6	9.27	67	120025	24.52	ug/L	0.00
Spiked Amount	25.000	Range 70 - 120	Recovery	=	98.08%	
37) Toluene-d8	10.32	98	394212	23.63	ug/L	0.00
Spiked Amount	25.000	Range 30 - 130	Recovery	=	94.52%	
38) trans-1,3-Dichloropropene-	10.58	79	53360	24.18	ug/L	0.00
Spiked Amount	25.000	Range 30 - 135	Recovery	=	96.72%	
39) 2-Hexanone-d5	10.93	63	47839	56.01	ug/L	0.00
Spiked Amount	50.000	Range 20 - 135	Recovery	=	112.02%	
48) 1,1,2,2-Tetrachloroethane-	12.69	84	112289	26.34	ug/L	0.00
Spiked Amount	25.000	Range 45 - 120	Recovery	=	105.36%	
61) 1,2-Dichlorobenzene-d4	13.85	152	118794	24.11	ug/L	0.00
Spiked Amount	25.000	Range 75 - 120	Recovery	=	96.44%	

Target Compounds

Target Compounds	R.T.	QIon	Response	Conc	Units	Ovalue
5) Vinyl chloride	2.37	62	2905	0.551	ug/L	# 1
13) Acetone	4.13	43	4931	6.622	ug/L	65
16) Methylene chloride	4.93	84	4525m	0.850	ug/L	11/18/20 SY
22) cis-1,2-Dichloroethene	7.17	96	67446	12.576	ug/L	97
35) Trichloroethene	9.09	95	33810	6.615	ug/L	99

(#) = qualifier out of range (m) = manual integration (+) = signals summed

Data Path : Z:\VOASRV\HPCHEM1\MSVOA W\DATA\VW111620\
 Data File : VW017257.D
 Acq On : 16 Nov 2020 15:20
 Operator : SY/VA
 Sample : L4739-13
 Misc : 6.74G/10ML/MSVOA W/SOIL
 ALS Vial : 14 Sample Multiplier: 1

Instrument :
 MSVOA_W
Client Sampled :
 GB100

Manual Integrations
APPROVED
 MMDadoda
 11/17/2020 6:53:39 PM

Quant Time: Nov 17 06:59:05 2020
 Quant Method : Z:\VOASRV\HPCHEM1\MSVOA_W\METHOD\SOM2WLM110420S.M
 Quant Title : VOC Analysis
 QLast Update : Tue Nov 17 06:08:23 2020
 Response via : Initial Calibration

