

Data File : VW017467.D
 Acq On : 24 Nov 2020 12:15
 Operator : SY/VA
 Sample : VSTD10010
 Misc : 5.00G/10ML/MSVOA_W/SOIL
 ALS Vial : 1 Sample Multiplier: 1

Instrument :
 MSVOA_W
 ClientSampleId :
 VSTD10004

Quant Time: Nov 24 12:46:21 2020
 Quant Method : Z:\VOASRV\HPCHEM1\MSVOA_W\METHOD\SOM2WLM112420S.M
 Quant Title : VOC Analysis
 QLast Update : Tue Nov 24 11:21:33 2020
 Response via : Initial Calibration

Internal Standards	R.T.	QIon	Response	Conc	Units	Dev(Min)
1) 1,4-Difluorobenzene	8.85	114	441310	25.00	ug/L	0.00
28) Chlorobenzene-d5	11.63	117	401877	25.00	ug/L	0.00
60) 1,4-Dichlorobenzene-d4	13.56	152	208267	25.00	ug/L	0.00

System Monitoring Compounds

4) Vinyl Chloride-d3	2.36	65	608462	92.00	ug/L	0.00
7) Chloroethane-d5	2.89	69	459703	90.79	ug/L	0.00
10) 1,1-Dichloroethene-d2	4.03	63	1281617	115.81	ug/L	0.00
20) 2-Butanone-d5	7.08	46	249354	218.47	ug/L	0.00
24) Chloroform-d	7.65	84	1203491	107.00	ug/L	0.00
26) 1,2-Dichloroethane-d4	8.31	65	586266	103.28	ug/L	0.00
29) Benzene-d6	8.27	84	2376195	104.75	ug/L	0.00
33) 1,2-Dichloropropane-d6	9.27	67	656824	98.89	ug/L	0.00
37) Toluene-d8	10.33	98	2198662	93.67	ug/L	0.00
38) trans-1,3-Dichloropropene-	10.58	79	313882	102.08	ug/L	0.00
39) 2-Hexanone-d5	10.93	63	191591	178.24	ug/L	0.00
48) 1,1,2,2-Tetrachloroethane-	12.69	84	470904	87.17	ug/L	0.00
61) 1,2-Dichlorobenzene-d4	13.85	152	742308	93.65	ug/L	0.00

Target Compounds

						Qvalue
2) Dichlorodifluoromethane	2.01	85	418606	99.983	ug/L	97
3) Chloromethane	2.22	50	446041	99.356	ug/L	98
5) Vinyl chloride	2.37	62	565364	91.316	ug/L	99
6) Bromomethane	2.78	94	367607	79.928	ug/L	99
8) Chloroethane	2.93	64	345288	88.898	ug/L	98
9) Trichlorofluoromethane	3.26	101	635977	113.166	ug/L	100
11) 1,1,2-Trichloro-1,2,2-trif	4.07	101	620739	107.715	ug/L	# 68
12) 1,1-Dichloroethene	4.05	96	618400	112.629	ug/L	97
13) Acetone	4.13	43	231989	282.664	ug/L	94
14) Carbon disulfide	4.39	76	1763730	112.396	ug/L	98
15) Methyl Acetate	4.67	43	213086	118.616	ug/L	98
16) Methylene chloride	4.92	84	566940	67.667	ug/L	98
17) Methyl tert-butyl Ether	5.43	73	651752	99.458	ug/L	98
18) trans-1,2-Dichloroethene	5.42	96	635598	108.522	ug/L	98
19) 1,1-Dichloroethane	6.22	63	1038563	114.325	ug/L	98
21) 2-Butanone	7.17	43	297764	244.894	ug/L	99
22) cis-1,2-Dichloroethene	7.17	96	656367	107.669	ug/L	99
23) Bromochloromethane	7.51	128	295416	102.565	ug/L	99
25) Chloroform	7.68	83	1091807	107.013	ug/L	99
27) 1,2-Dichloroethane	8.40	62	657286	103.809	ug/L	100
30) Cyclohexane	7.96	56	981780	127.356	ug/L	100
31) 1,1,1-Trichloroethane	7.88	97	927965	101.319	ug/L	99
32) Carbon tetrachloride	8.07	117	926100	103.016	ug/L	98
34) Benzene	8.33	78	2332088	104.165	ug/L	100
35) Trichloroethene	9.09	95	660297	96.719	ug/L	99
36) Methylcyclohexane	9.34	83	1118490	100.176	ug/L	99
40) 1,2-Dichloropropane	9.37	63	555271	98.819	ug/L	99
41) Bromodichloromethane	9.65	83	783267	99.846	ug/L	98
42) cis-1,3-Dichloropropene	10.07	75	923224	102.911	ug/L	98
43) 4-Methyl-2-pentanone	10.21	43	522678	190.558	ug/L	95

Data File : VW017467.D
 Acq On : 24 Nov 2020 12:15
 Operator : SY/VA
 Sample : VSTD10010
 Misc : 5.00G/10ML/MSVOA_W/SOIL
 ALS Vial : 1 Sample Multiplier: 1

Instrument :
 MSVOA_W
 ClientSampleId :
 VSTD10004

Quant Time: Nov 24 12:46:21 2020
 Quant Method : Z:\VOASRV\HPCHEM1\MSVOA_W\METHOD\SOM2WLM112420S.M
 Quant Title : VOC Analysis
 QLast Update : Tue Nov 24 11:21:33 2020
 Response via : Initial Calibration

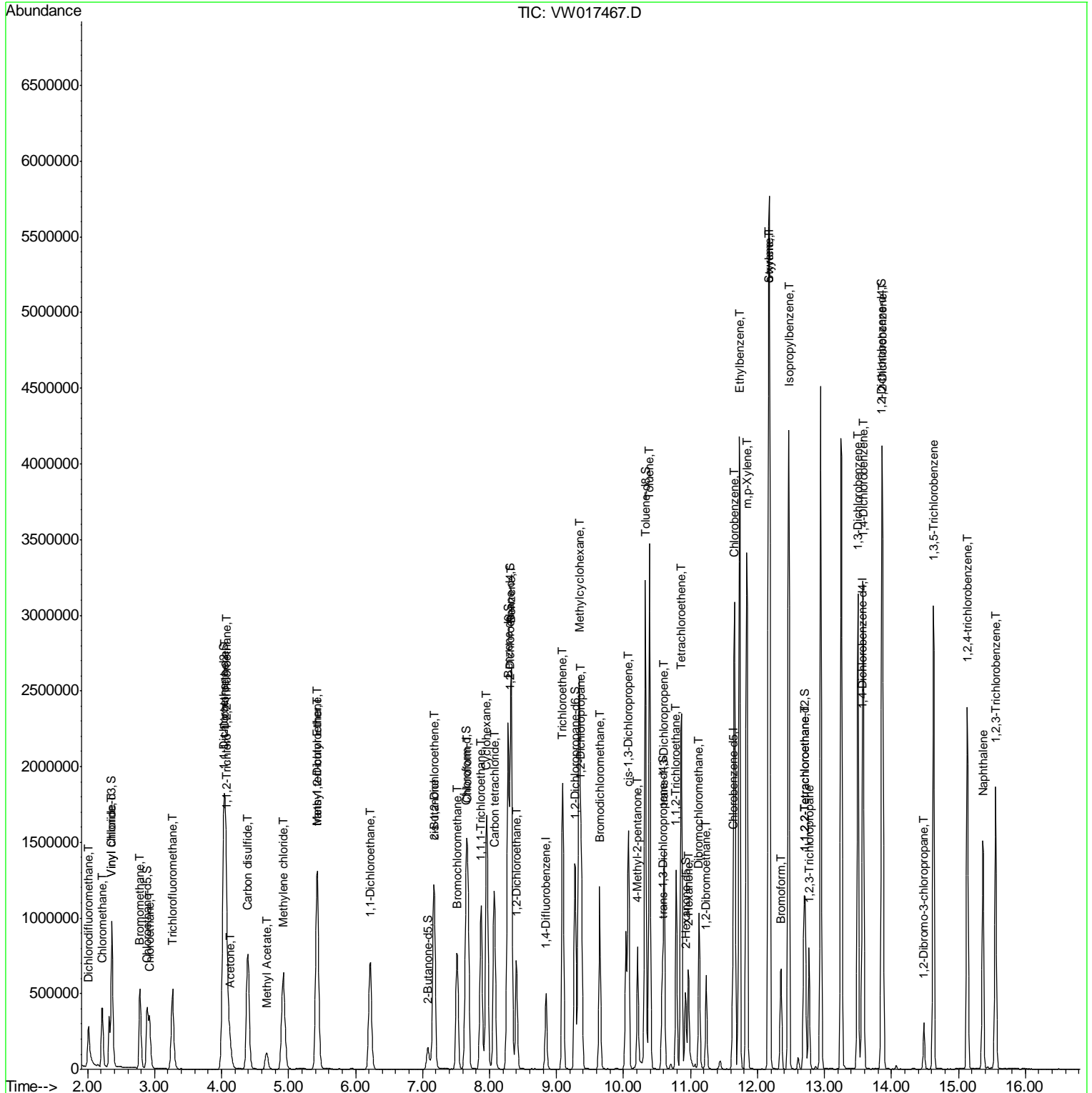
Internal Standards	R.T.	QIon	Response	Conc	Units	Dev(Min)
44) Toluene	10.39	91	2548598	93.639	ug/L	99
45) trans-1,3-Dichloropropene	10.61	75	805097	103.631	ug/L	100
46) 1,1,2-Trichloroethane	10.79	97	414441	86.155	ug/L	98
47) Tetrachloroethene	10.87	164	550319	83.998	ug/L	99
49) 2-Hexanone	10.97	43	428015	224.425	ug/L	93
50) Dibromochloromethane	11.13	129	547715	93.133	ug/L	96
51) 1,2-Dibromoethane	11.24	107	413071	93.658	ug/L	97
52) Chlorobenzene	11.66	112	1685675	95.614	ug/L	98
53) Ethylbenzene	11.73	91	2944777	99.684	ug/L	98
54) m,p-Xylene	11.84	106	1130003	97.750	ug/L	88
55) o-xylene	12.17	106	1050513	93.648	ug/L	98
56) Styrene	12.18	104	1793463	93.917	ug/L	99
57) Isopropylbenzene	12.47	105	2874224	91.994	ug/L	98
58) 1,1,2,2-Tetrachloroethane	12.71	83	457498	88.771	ug/L	100
59) 1,2,3-Trichloropropane	12.77	75	330552	89.719	ug/L	99
62) Bromoform	12.35	173	308828	97.174	ug/L	98
63) 1,3-Dichlorobenzene	13.50	146	1315173	95.850	ug/L	96
64) 1,4-Dichlorobenzene	13.58	146	1278831	92.636	ug/L	93
65) 1,2-Dichlorobenzene	13.87	146	1122977	91.243	ug/L #	85
66) 1,2-Dibromo-3-chloropropan	14.49	75	76311	105.719	ug/L	98
67) 1,3,5-Trichlorobenzene	14.63	180	951767	92.524	ug/L	98
68) 1,2,4-trichlorobenzene	15.13	180	771054	84.573	ug/L	97
69) Naphthalene	15.36	128	1303625	92.760	ug/L	99
70) 1,2,3-Trichlorobenzene	15.55	180	652359	80.576	ug/L	98

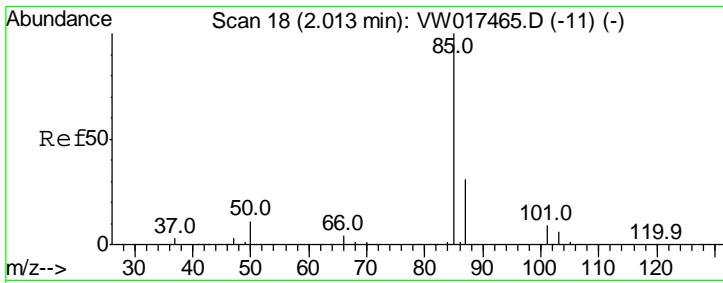
(#) = qualifier out of range (m) = manual integration (+) = signals summed

Data File : VW017467.D
Acq On : 24 Nov 2020 12:15
Operator : SY/VA
Sample : VSTD10010
Misc : 5.00G/10ML/MSVOA_W/SOIL
ALS Vial : 1 Sample Multiplier: 1

Instrument :
MSVOA_W
Client Sampled :
VSTD10004

Quant Time: Nov 24 12:46:21 2020
Quant Method : Z:\VOASRV\HPCHEM1\MSVOA_W\METHOD\SOM2WLM112420S.M
Quant Title : VOC Analysis
QLast Update : Tue Nov 24 11:21:33 2020
Response via : Initial Calibration

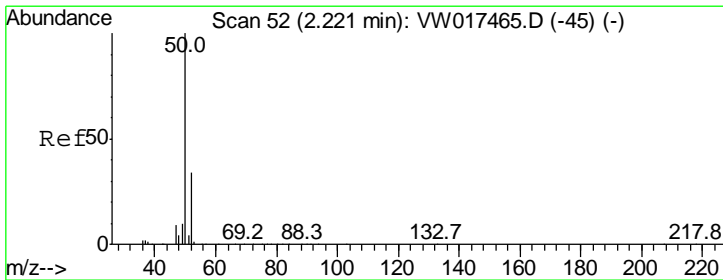
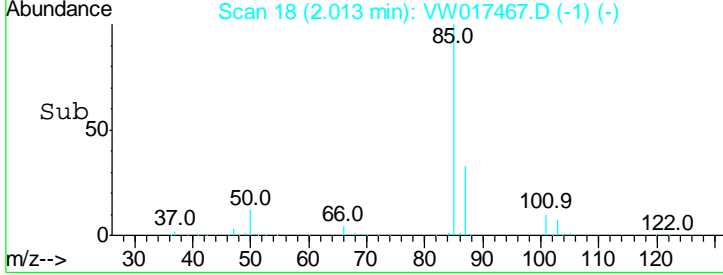
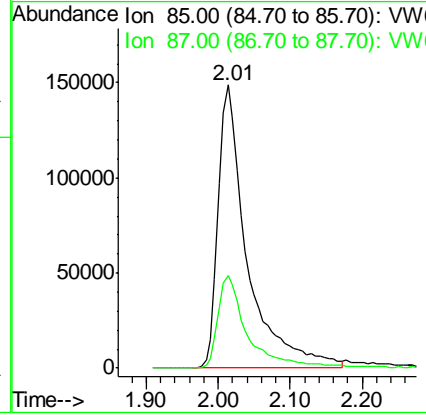
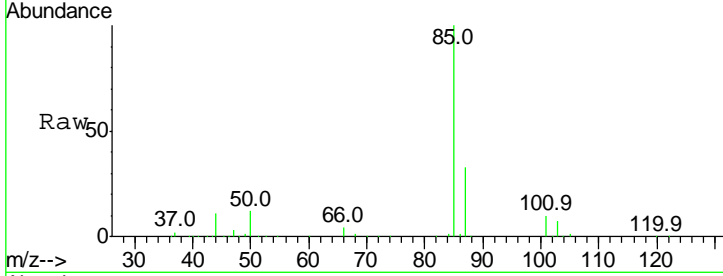




#2
 Dichlorodifluoromethane
 Concen: 99.983 ug/L
 RT: 2.01 min Scan# 18
 Delta R.T. 0.00 min
 Lab File: VW017467.D
 Acq: 24 Nov 2020 12:15

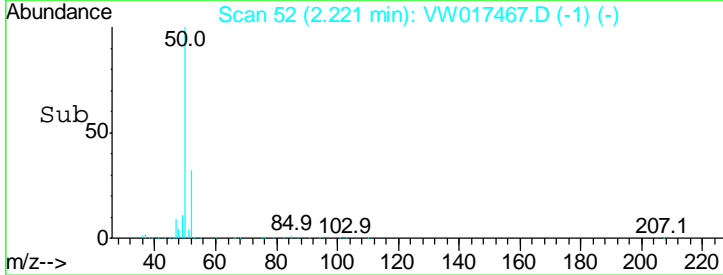
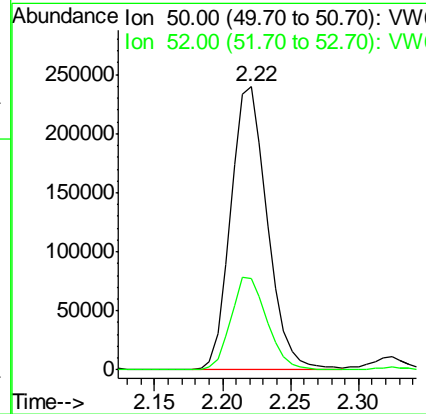
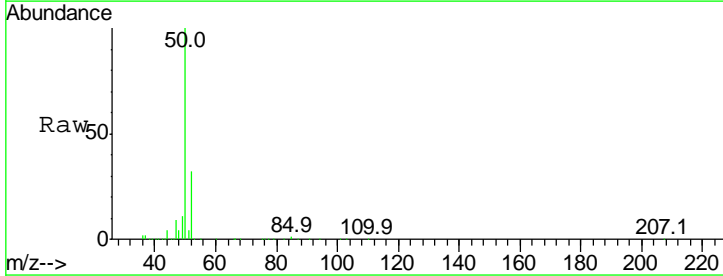
Instrument :
 MSVOA_W
ClientSampled :
 VSTD10004

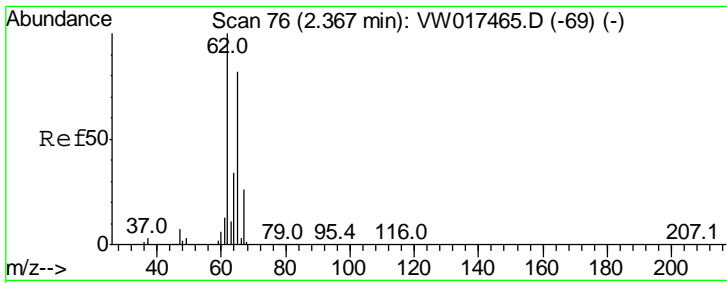
Tgt Ion: 85 Resp: 418606
 Ion Ratio Lower Upper
 85 100
 87 31.6 23.2 43.0



#3
 Chloromethane
 Concen: 99.356 ug/L
 RT: 2.22 min Scan# 52
 Delta R.T. -0.00 min
 Lab File: VW017467.D
 Acq: 24 Nov 2020 12:15

Tgt Ion: 50 Resp: 446041
 Ion Ratio Lower Upper
 50 100
 52 32.1 23.4 43.6

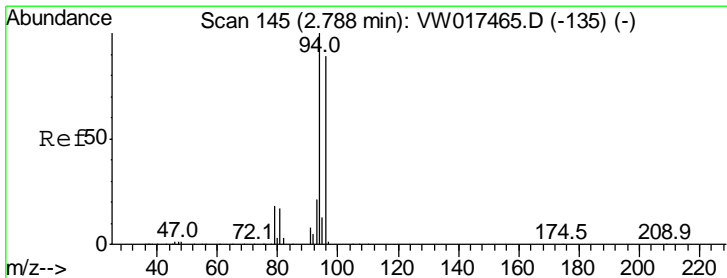
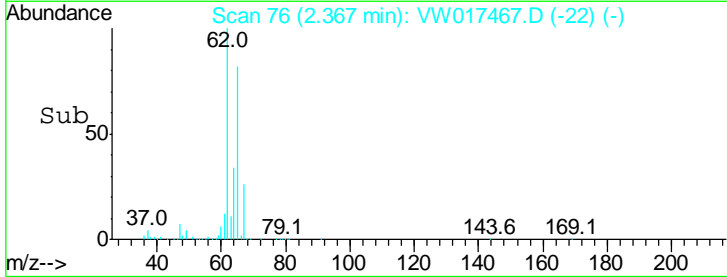
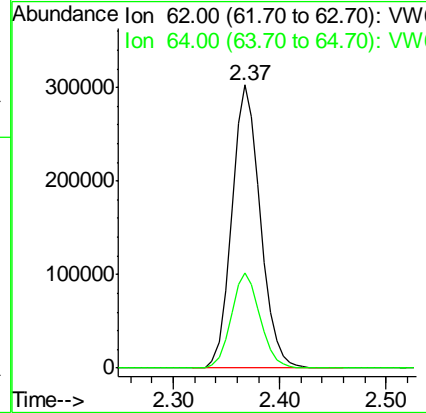
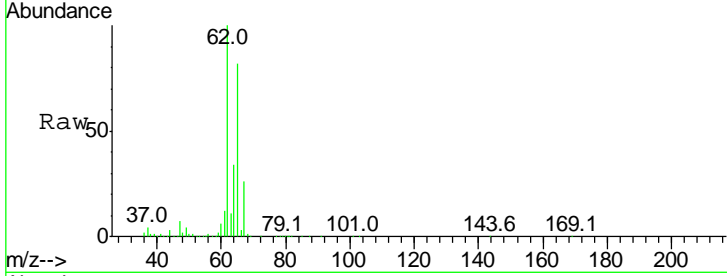




#5
 Vinyl chloride
 Concen: 91.316 ug/L
 RT: 2.37 min Scan# 76
 Delta R.T. -0.00 min
 Lab File: VW017467.D
 Acq: 24 Nov 2020 12:15

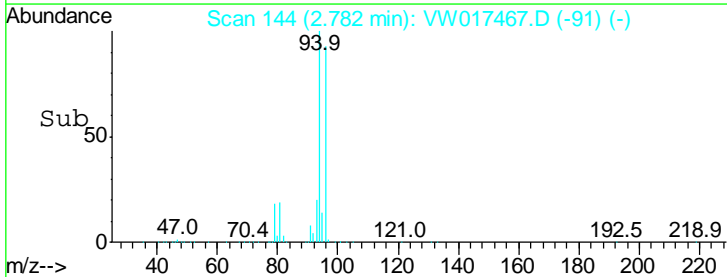
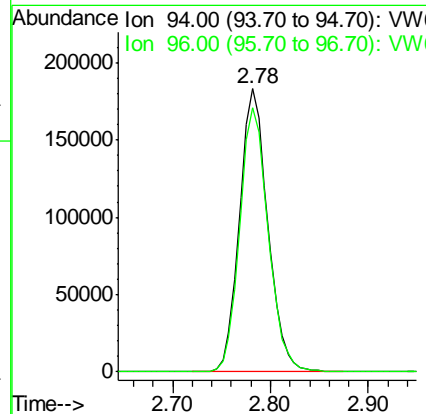
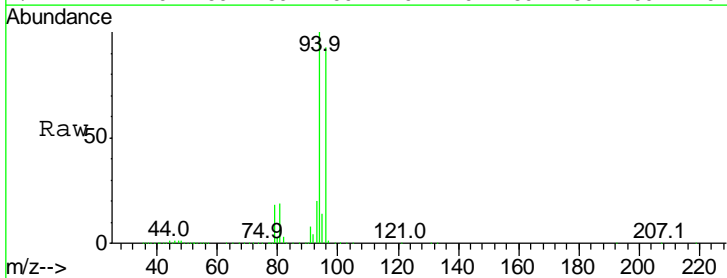
Instrument :
 MSVOA_W
ClientSampled :
 VSTD10004

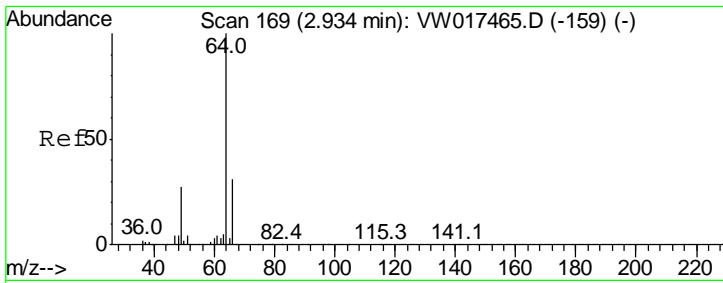
Tgt Ion: 62 Resp: 565364
 Ion Ratio Lower Upper
 62 100
 64 33.8 23.9 44.5



#6
 Bromomethane
 Concen: 79.928 ug/L
 RT: 2.78 min Scan# 144
 Delta R.T. -0.01 min
 Lab File: VW017467.D
 Acq: 24 Nov 2020 12:15

Tgt Ion: 94 Resp: 367607
 Ion Ratio Lower Upper
 94 100
 96 94.3 9.4 178.0

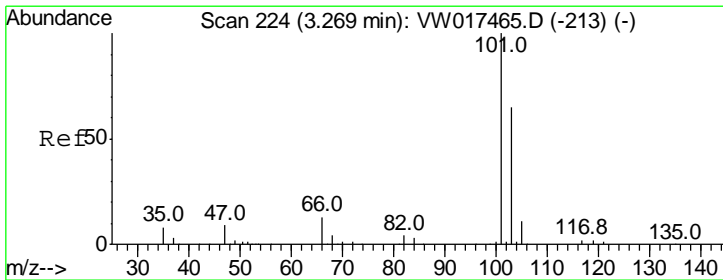
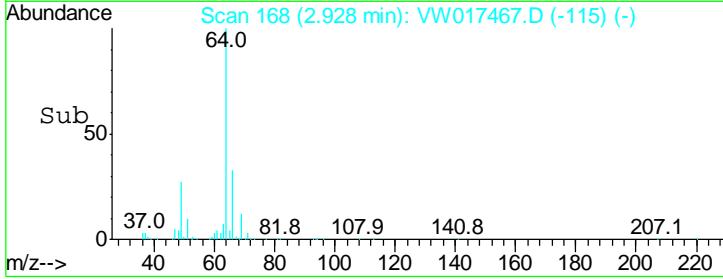
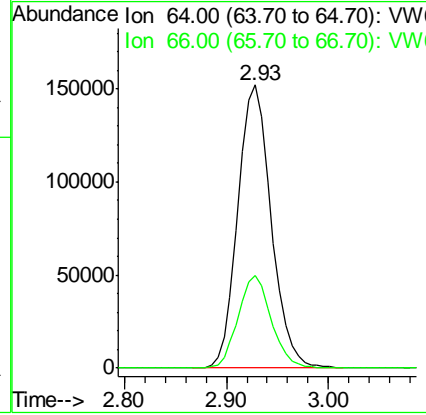
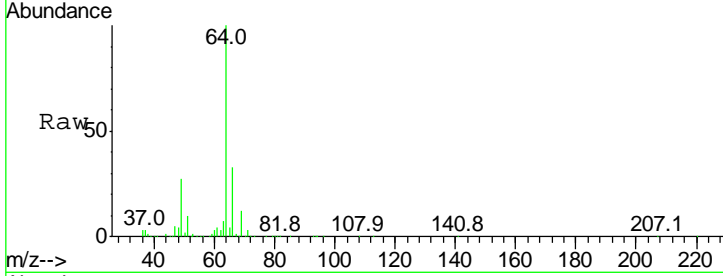




#8
 Chloroethane
 Concen: 88.898 ug/L
 RT: 2.93 min Scan# 168
 Delta R.T. -0.01 min
 Lab File: VW017467.D
 Acq: 24 Nov 2020 12:15

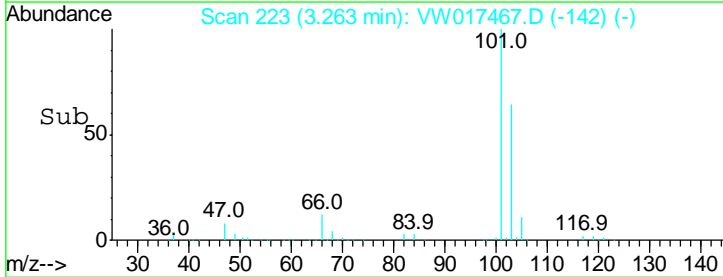
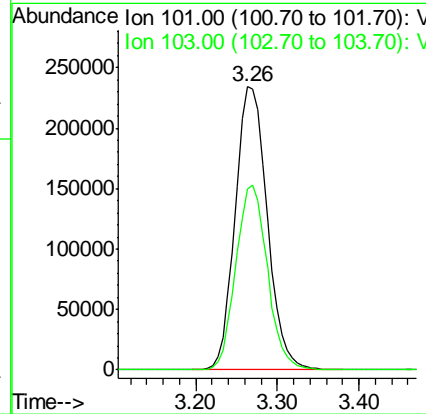
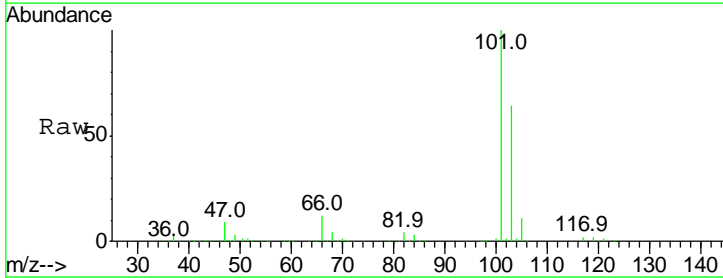
Instrument : MSVOA_W
 ClientSampled : VSTD10004

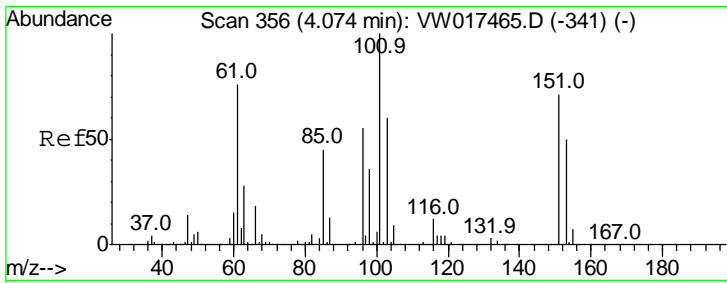
Tgt Ion: 64 Resp: 345288
 Ion Ratio Lower Upper
 64 100
 66 32.5 22.0 41.0



#9
 Trichlorofluoromethane
 Concen: 113.166 ug/L
 RT: 3.26 min Scan# 223
 Delta R.T. -0.01 min
 Lab File: VW017467.D
 Acq: 24 Nov 2020 12:15

Tgt Ion: 101 Resp: 635977
 Ion Ratio Lower Upper
 101 100
 103 64.3 45.0 83.6

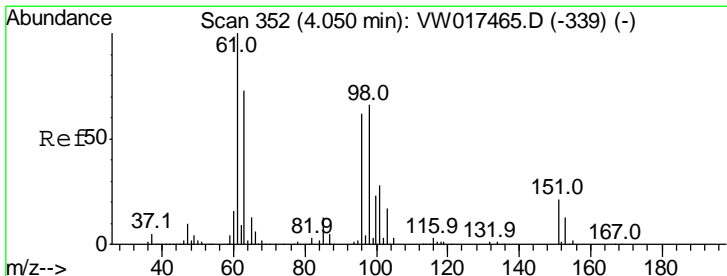
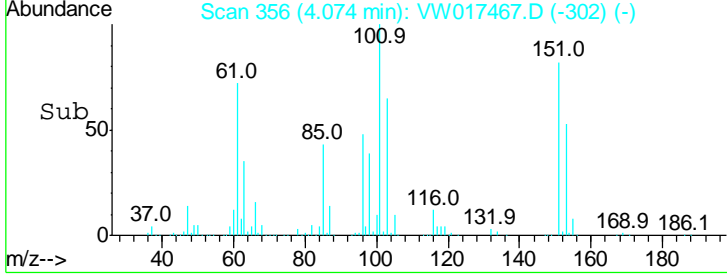
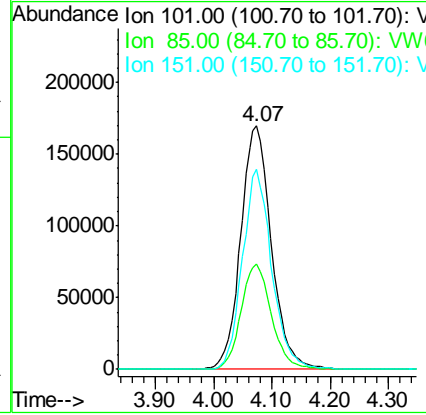
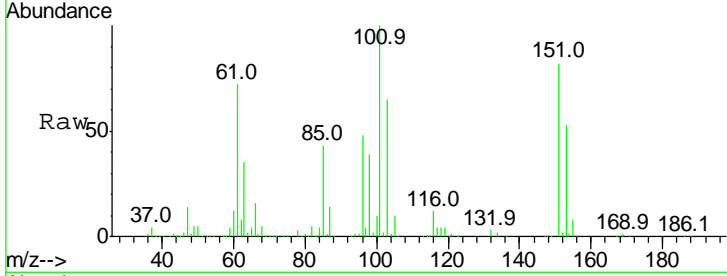




#11
 1,1,2-Trichloro-1,2,2-trifluoroethane
 Concen: 107.715 ug/L
 RT: 4.07 min Scan# 356
 Delta R.T. -0.00 min
 Lab File: VW017467.D
 Acq: 24 Nov 2020 12:15

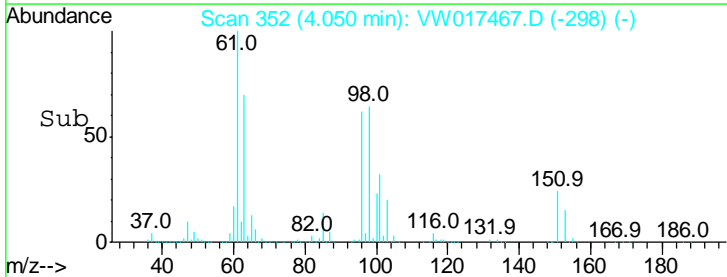
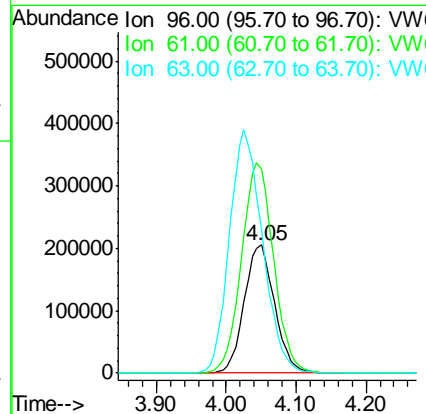
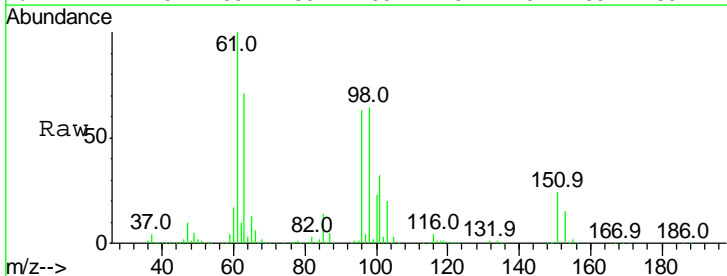
Instrument :
 MSVOA_W
 ClientSampled :
 VSTD10004

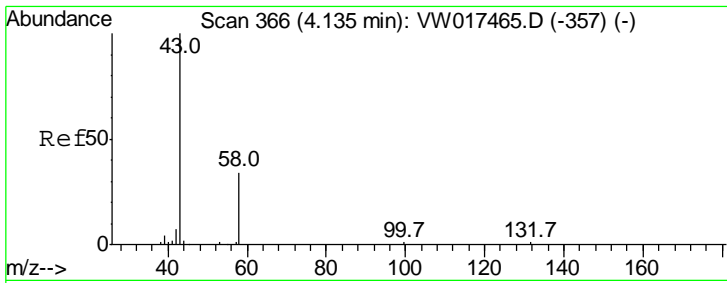
Tgt Ion	Resp	Lower	Upper
101	620739		
101	100		
85	42.6	34.2	51.4
151	78.4	30.4	45.6



#12
 1,1-Dichloroethene
 Concen: 112.629 ug/L
 RT: 4.05 min Scan# 352
 Delta R.T. -0.00 min
 Lab File: VW017467.D
 Acq: 24 Nov 2020 12:15

Tgt Ion	Resp	Lower	Upper
96	618400		
96	100		
61	160.0	112.5	208.9
63	112.8	83.1	154.3

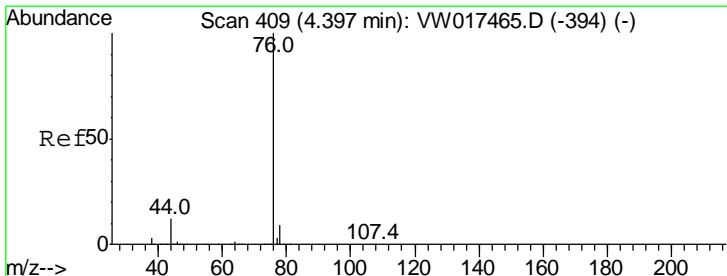
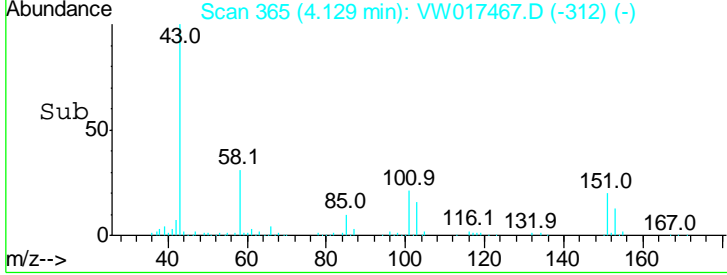
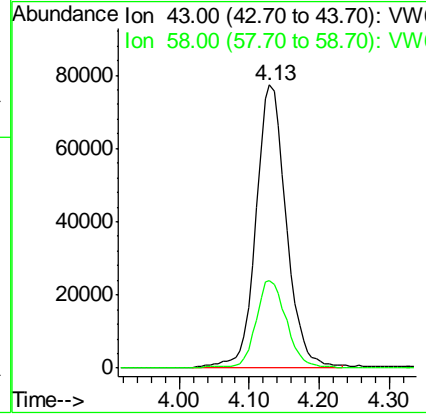
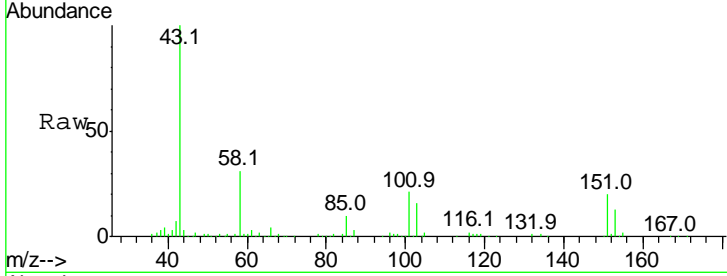




#13
 Acetone
 Concen: 282.664 ug/L
 RT: 4.13 min Scan# 365
 Delta R.T. -0.01 min
 Lab File: VW017467.D
 Acq: 24 Nov 2020 12:15

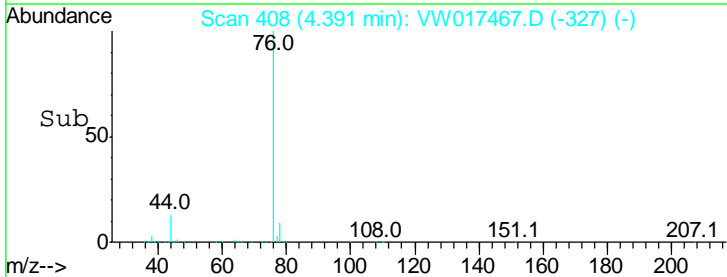
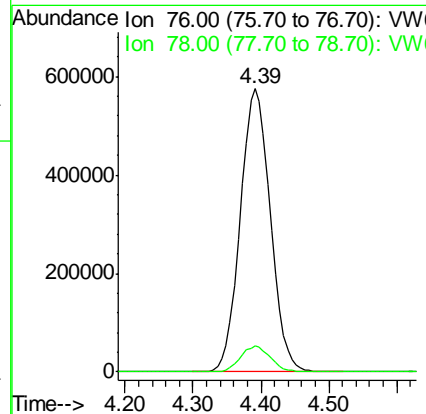
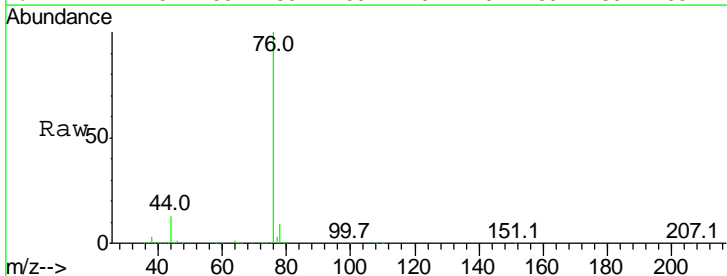
Instrument :
 MSVOA_W
ClientSampled :
 VSTD10004

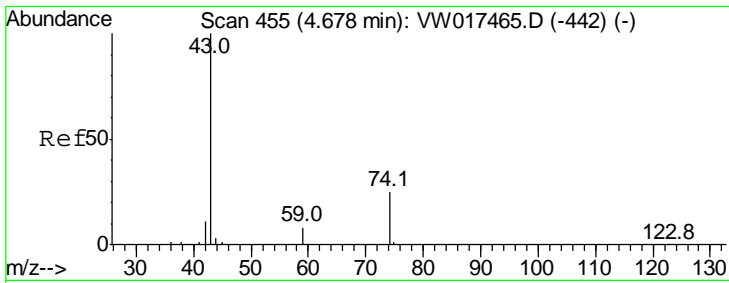
Tgt Ion	Resp	Lower	Upper
43	100		
58	30.9	0.0	68.4



#14
 Carbon disulfide
 Concen: 112.396 ug/L
 RT: 4.39 min Scan# 408
 Delta R.T. -0.01 min
 Lab File: VW017467.D
 Acq: 24 Nov 2020 12:15

Tgt Ion	Resp	Lower	Upper
76	100		
78	9.4	7.0	10.4

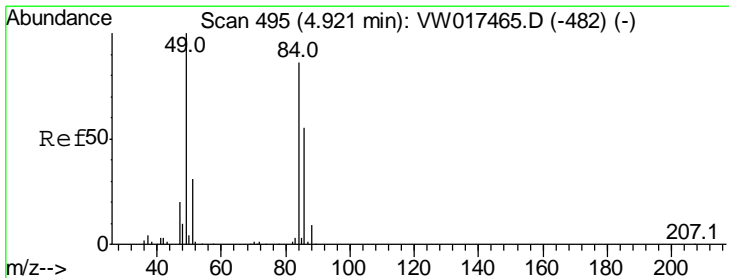
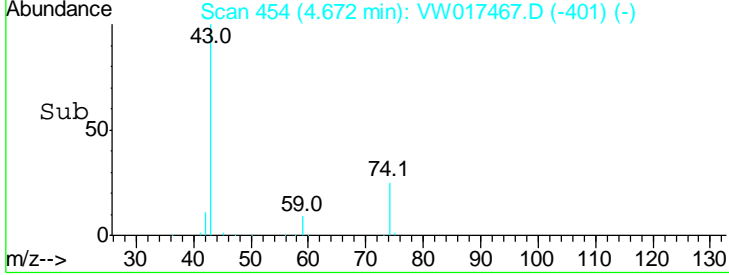
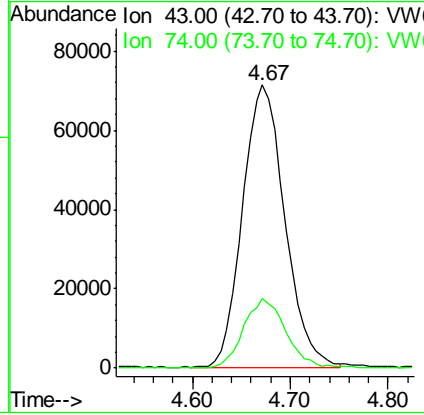
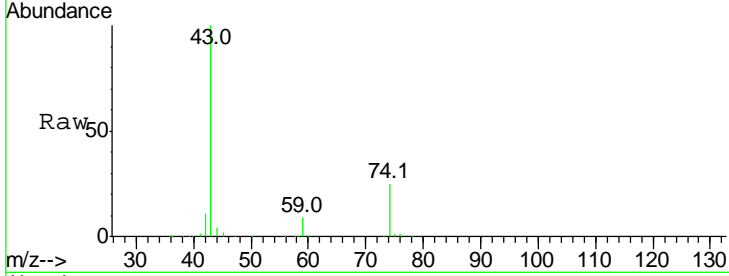




#15
 Methyl Acetate
 Concen: 118.616 ug/L
 RT: 4.67 min Scan# 454
 Delta R.T. -0.01 min
 Lab File: VW017467.D
 Acq: 24 Nov 2020 12:15

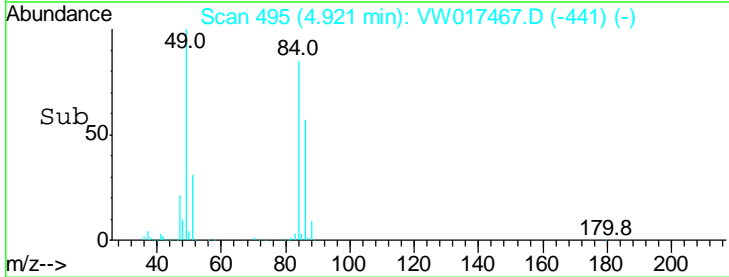
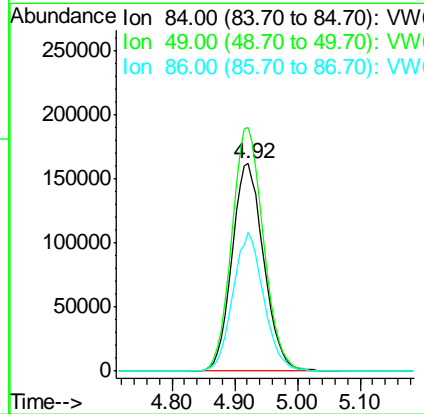
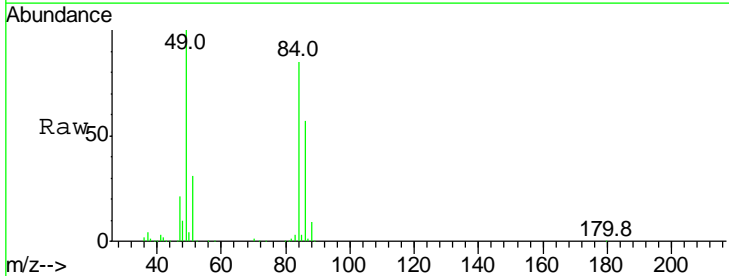
Instrument :
 MSVOA_W
ClientSampled :
 VSTD10004

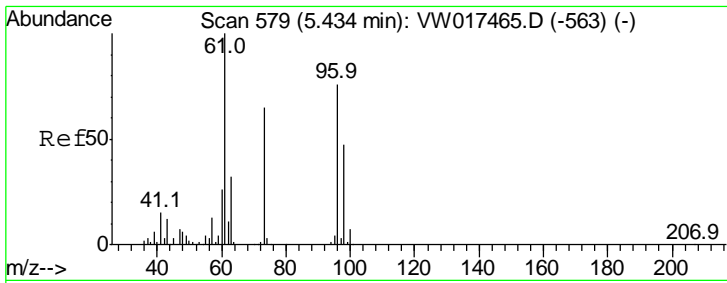
Tgt Ion	Resp	Lower	Upper
43	213086		
43	100		
74	24.7	20.7	31.1



#16
 Methylene chloride
 Concen: 67.667 ug/L
 RT: 4.92 min Scan# 495
 Delta R.T. 0.00 min
 Lab File: VW017467.D
 Acq: 24 Nov 2020 12:15

Tgt Ion	Resp	Lower	Upper
84	566940		
84	100		
49	117.2	81.2	150.8
86	66.6	44.5	82.7

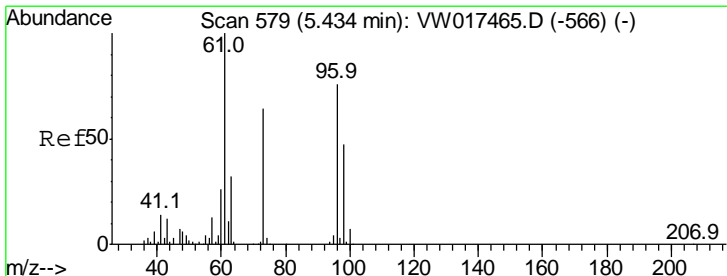
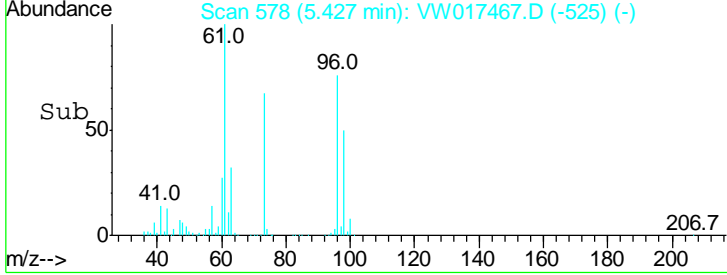
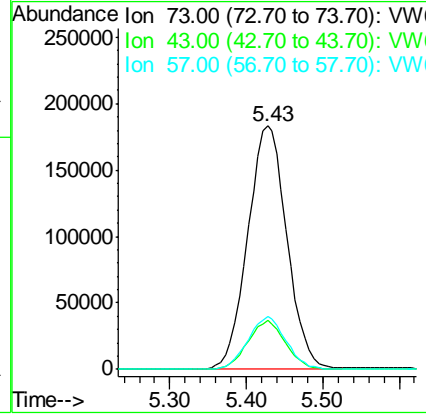
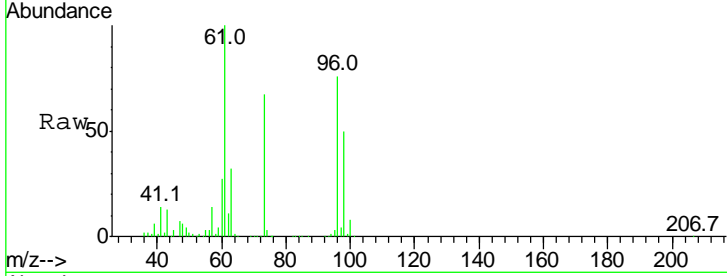




#17
 Methyl tert-butyl Ether
 Concen: 99.458 ug/L
 RT: 5.43 min Scan# 578
 Delta R.T. -0.01 min
 Lab File: VW017467.D
 Acq: 24 Nov 2020 12:15

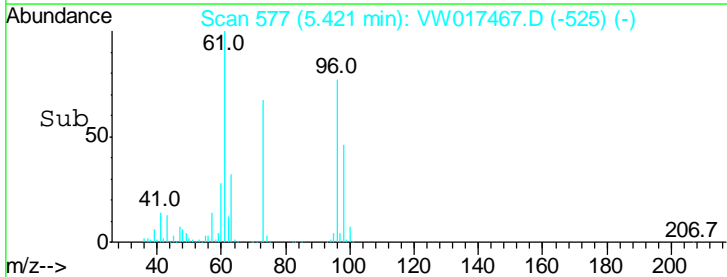
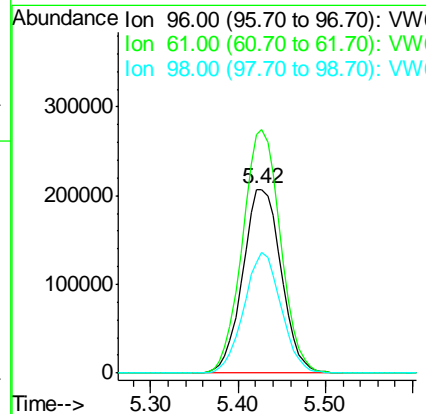
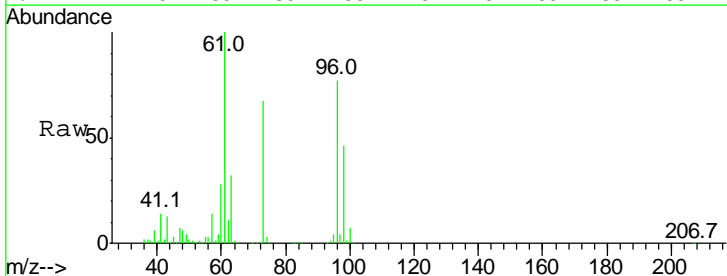
Instrument :
 MSVOA_W
 ClientSampled :
 VSTD10004

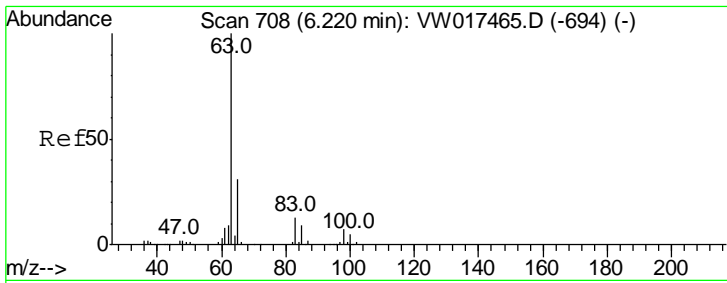
Tgt Ion	Resp	Lower	Upper
73	100		
43	19.2	16.2	24.4
57	21.1	17.2	25.8



#18
 trans-1,2-Dichloroethene
 Concen: 108.522 ug/L
 RT: 5.42 min Scan# 577
 Delta R.T. -0.01 min
 Lab File: VW017467.D
 Acq: 24 Nov 2020 12:15

Tgt Ion	Resp	Lower	Upper
96	100		
61	130.0	92.7	172.1
98	60.0	43.3	80.3



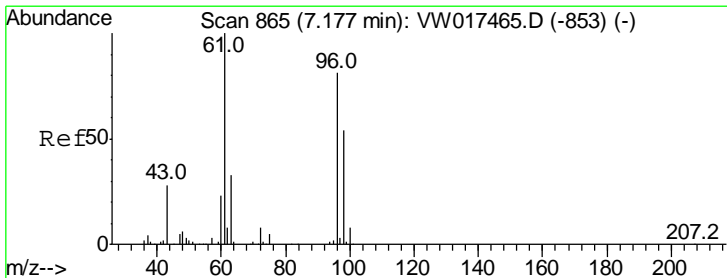
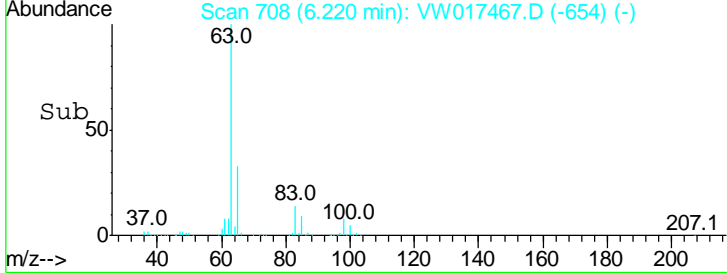
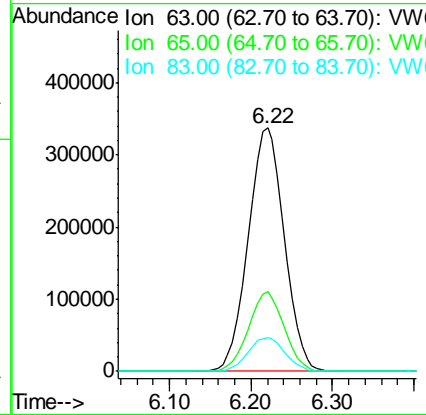
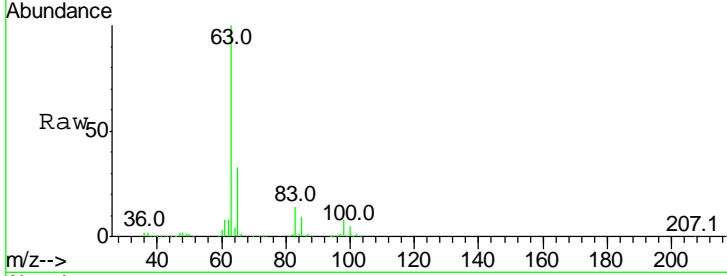


#19
 1,1-Dichloroethane
 Concen: 114.325 ug/L
 RT: 6.22 min Scan# 708
 Delta R.T. -0.00 min
 Lab File: VW017467.D
 Acq: 24 Nov 2020 12:15

Instrument :
 MSVOA_W
 ClientSampled :
 VSTD10004

Tgt Ion: 63 Resp: 1038563

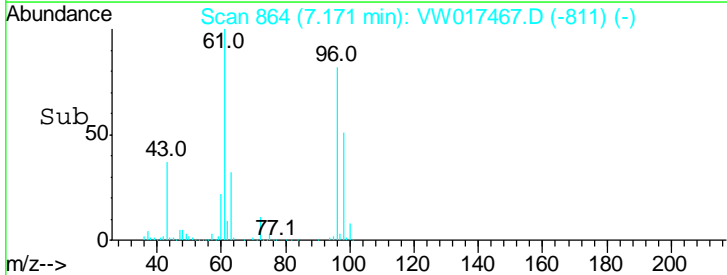
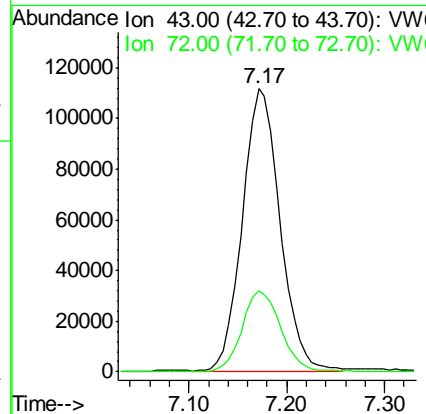
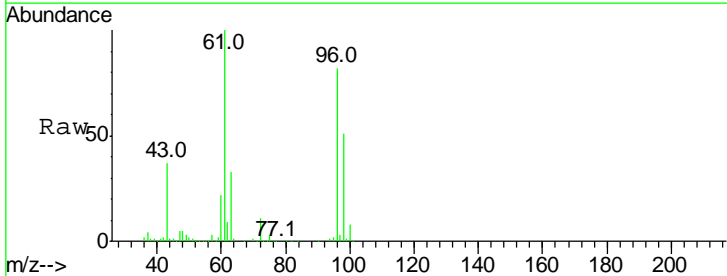
Ion	Ratio	Lower	Upper
63	100		
65	32.9	21.9	40.7
83	14.1	9.4	17.6

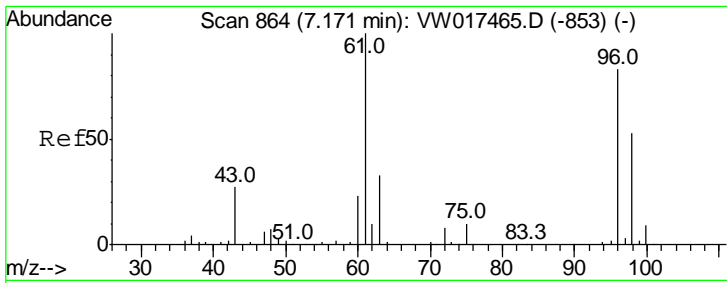


#21
 2-Butanone
 Concen: 244.894 ug/L
 RT: 7.17 min Scan# 864
 Delta R.T. -0.01 min
 Lab File: VW017467.D
 Acq: 24 Nov 2020 12:15

Tgt Ion: 43 Resp: 297764

Ion	Ratio	Lower	Upper
43	100		
72	29.6	14.4	43.2

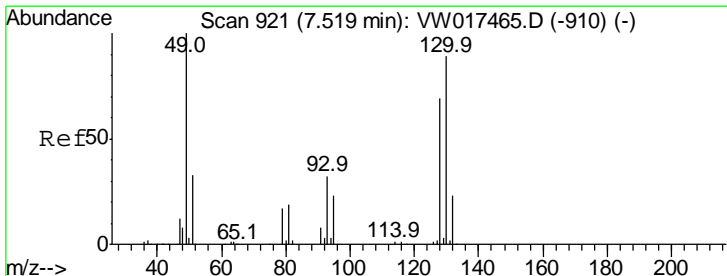
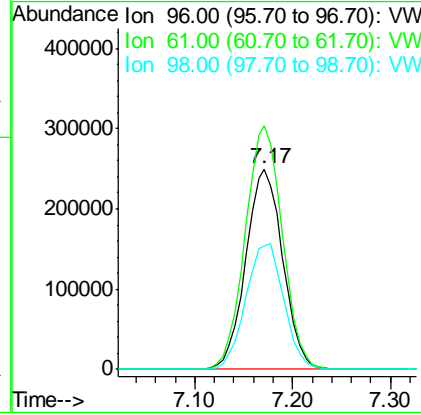
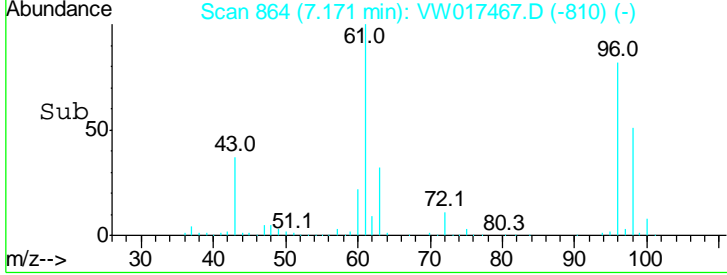
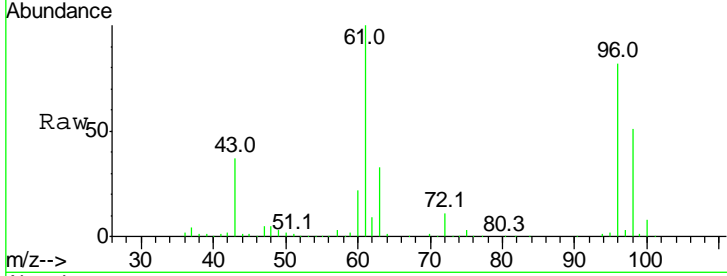




#22
 cis-1,2-Dichloroethene
 Concen: 107.669 ug/L
 RT: 7.17 min Scan# 864
 Delta R.T. -0.00 min
 Lab File: VW017467.D
 Acq: 24 Nov 2020 12:15

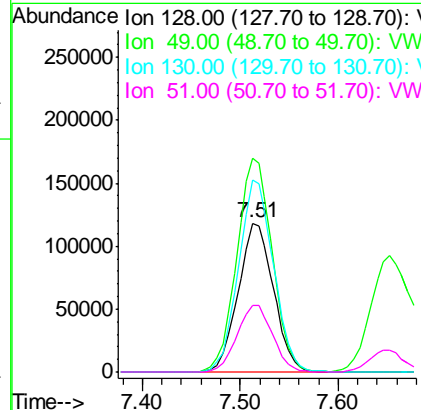
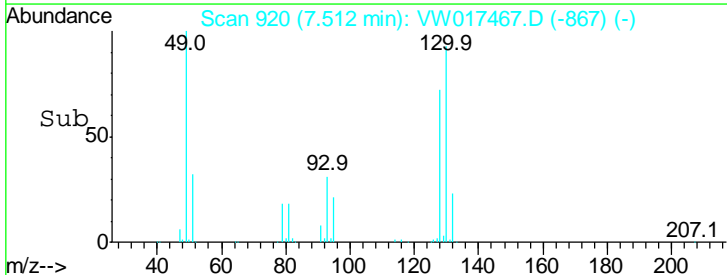
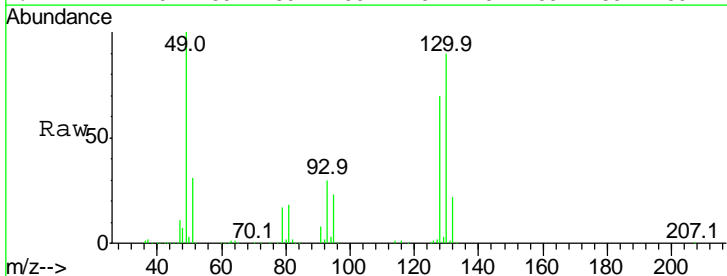
Instrument : MSVOA_W
 ClientSampled : VSTD10004

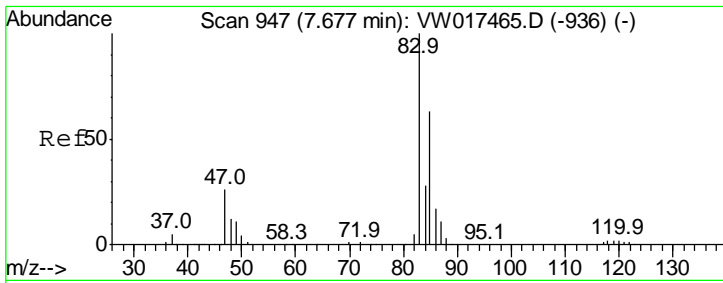
Tgt Ion	Resp	Lower	Upper
96	656367		
96	100		
61	121.3	84.6	157.2
98	61.7	44.7	82.9



#23
 Bromochloromethane
 Concen: 102.565 ug/L
 RT: 7.51 min Scan# 920
 Delta R.T. -0.01 min
 Lab File: VW017467.D
 Acq: 24 Nov 2020 12:15

Tgt Ion	Resp	Lower	Upper
128	295416		
128	100		
49	143.2	101.6	188.6
130	128.6	90.4	167.8
51	45.0	37.7	56.5

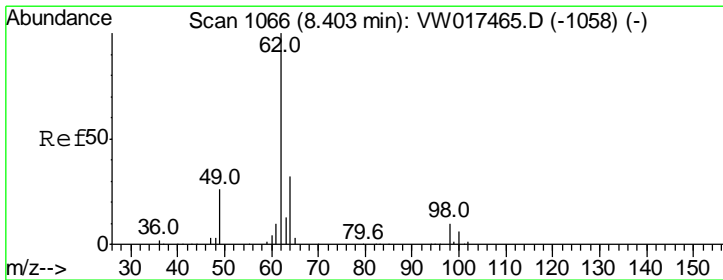
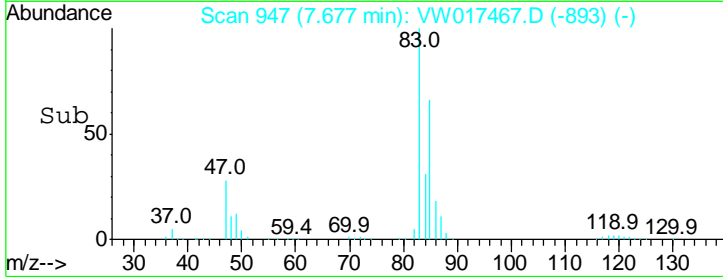
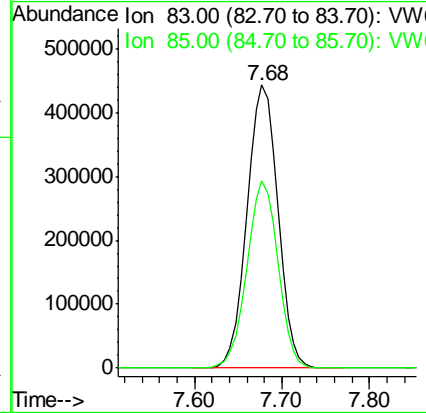
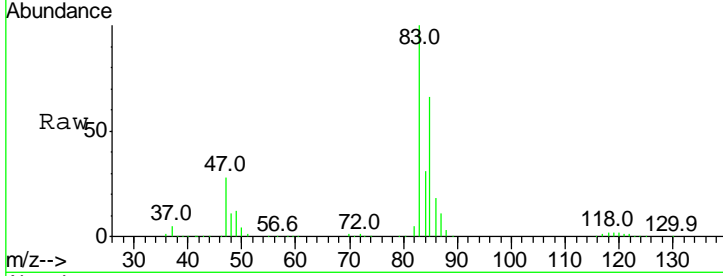




#25
 Chloroform
 Concen: 107.013 ug/L
 RT: 7.68 min Scan# 947
 Delta R.T. 0.00 min
 Lab File: VW017467.D
 Acq: 24 Nov 2020 12:15

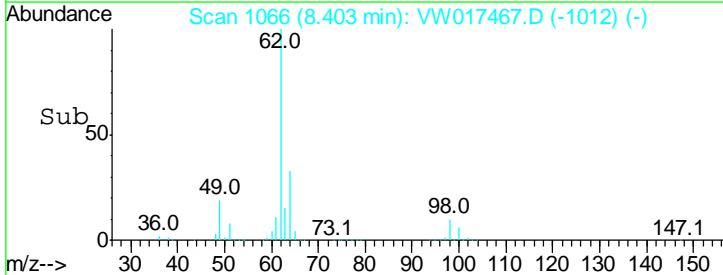
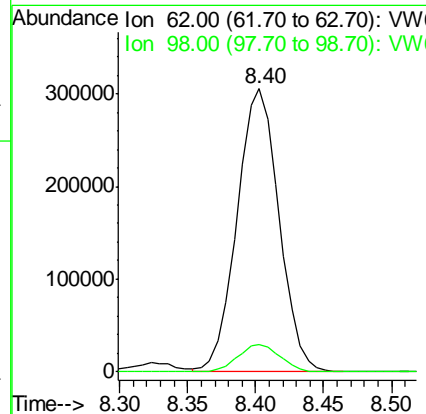
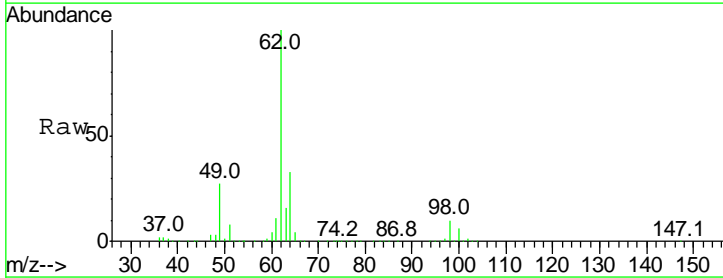
Instrument :
 MSVOA_W
 ClientSampled :
 VSTD10004

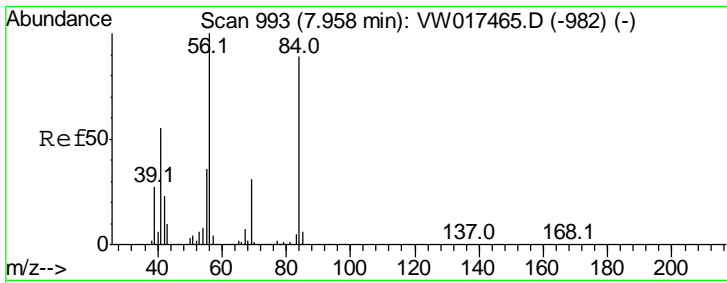
Tgt Ion: 83 Resp: 1091807
 Ion Ratio Lower Upper
 83 100
 85 66.3 45.7 84.9



#27
 1,2-Dichloroethane
 Concen: 103.809 ug/L
 RT: 8.40 min Scan# 1066
 Delta R.T. -0.00 min
 Lab File: VW017467.D
 Acq: 24 Nov 2020 12:15

Tgt Ion: 62 Resp: 657286
 Ion Ratio Lower Upper
 62 100
 98 9.8 8.0 12.0

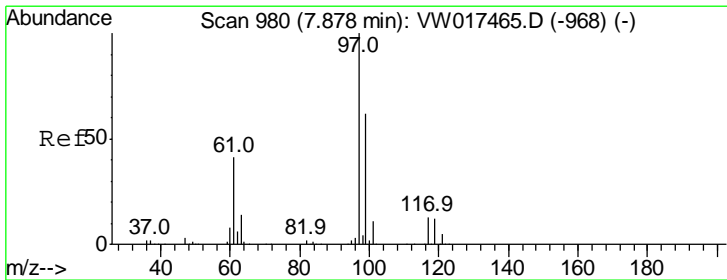
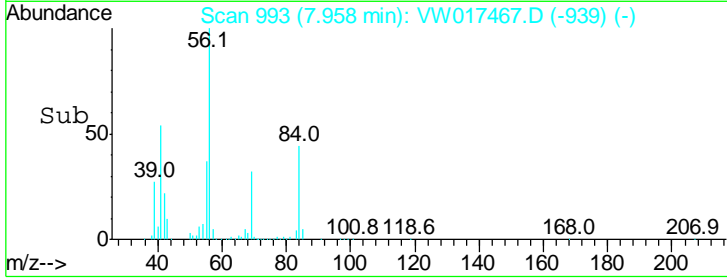
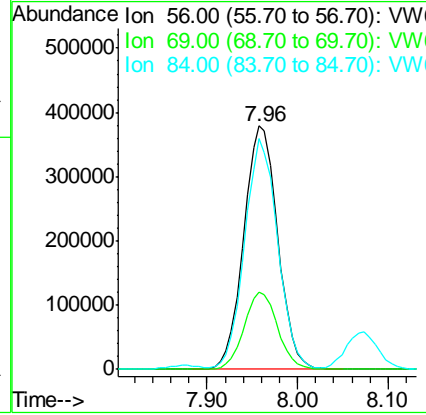
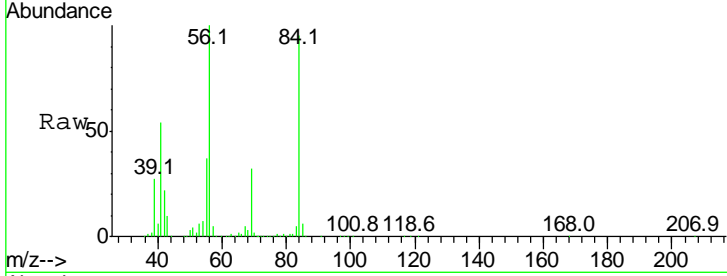




#30
 Cyclohexane
 Concen: 127.356 ug/L
 RT: 7.96 min Scan# 993
 Delta R.T. -0.00 min
 Lab File: VW017467.D
 Acq: 24 Nov 2020 12:15

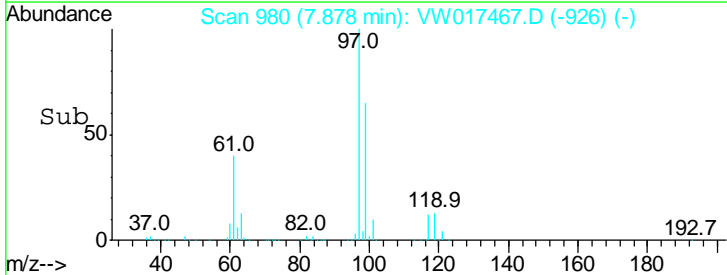
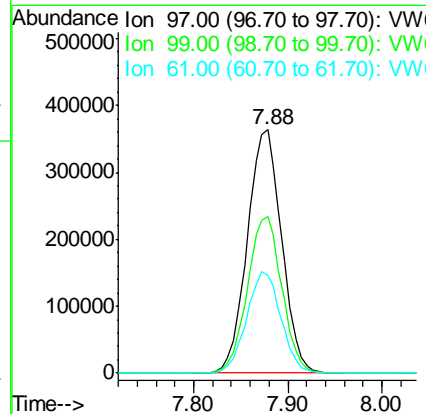
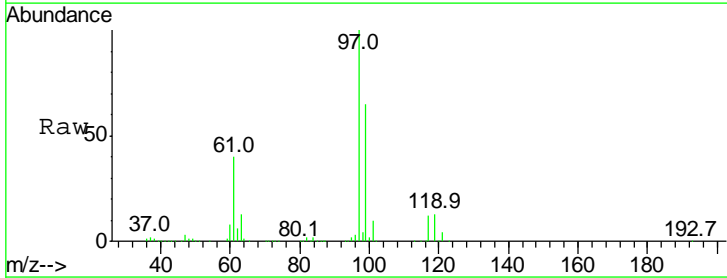
Instrument :
 MSVOA_W
 ClientSampled :
 VSTD10004

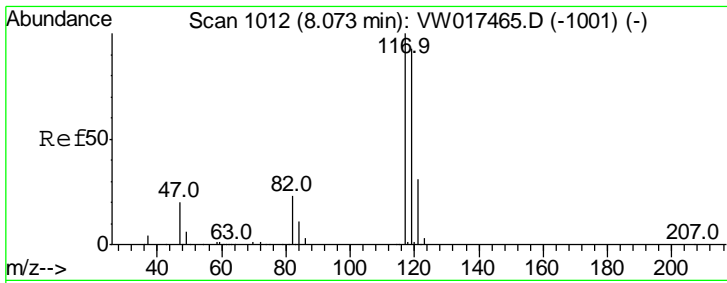
Tgt Ion	Resp	Lower	Upper
56	981780		
56	100		
69	31.4	24.8	37.2
84	92.5	74.2	111.4



#31
 1,1,1-Trichloroethane
 Concen: 101.319 ug/L
 RT: 7.88 min Scan# 980
 Delta R.T. 0.00 min
 Lab File: VW017467.D
 Acq: 24 Nov 2020 12:15

Tgt Ion	Resp	Lower	Upper
97	927965		
97	100		
99	64.5	51.0	76.4
61	41.4	33.6	50.4

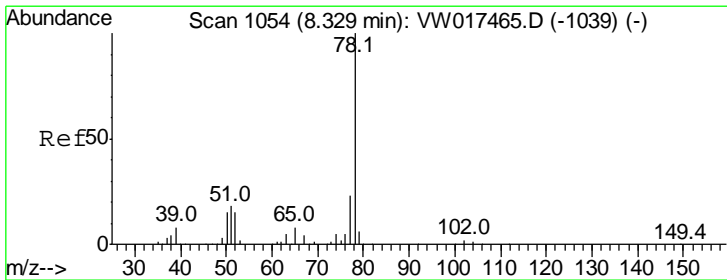
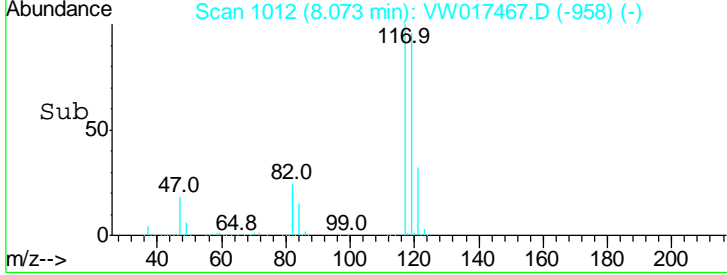
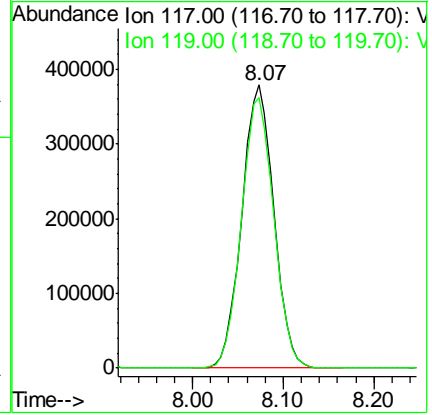
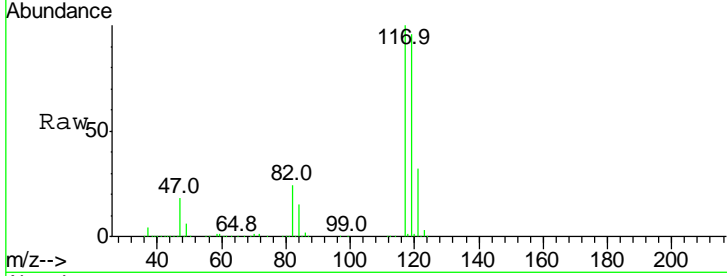




#32
 Carbon tetrachloride
 Concen: 103.016 ug/L
 RT: 8.07 min Scan# 1012
 Delta R.T. -0.00 min
 Lab File: VW017467.D
 Acq: 24 Nov 2020 12:15

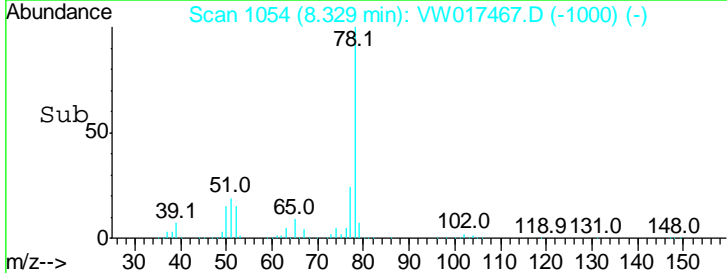
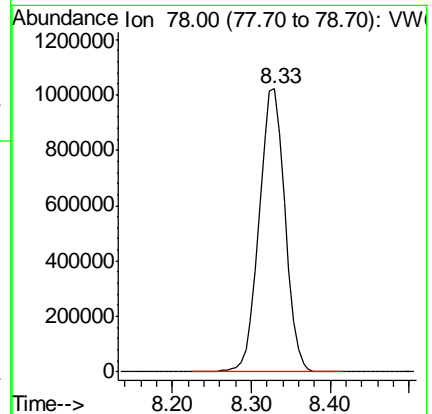
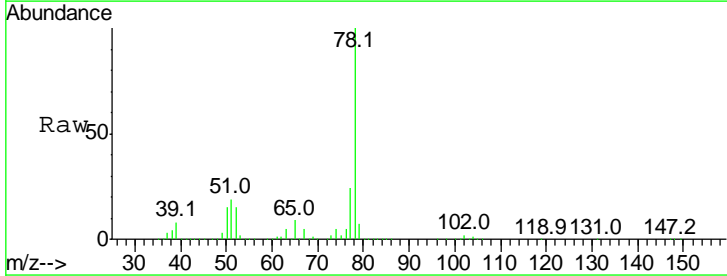
Instrument :
 MSVOA_W
 ClientSampled :
 VSTD10004

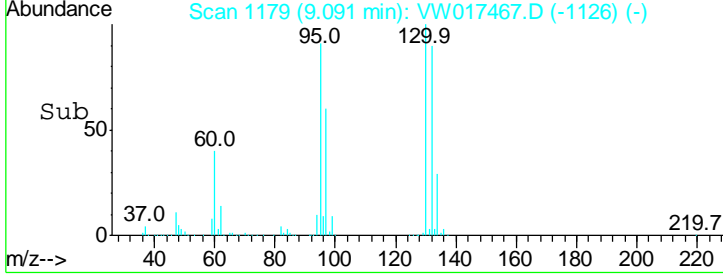
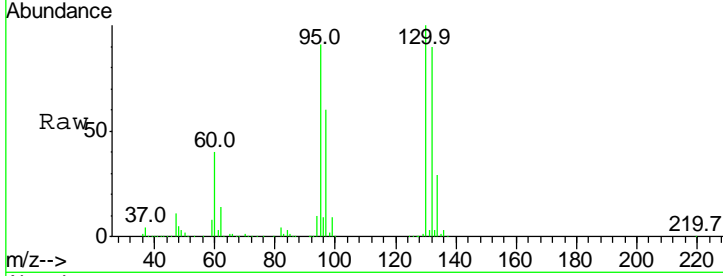
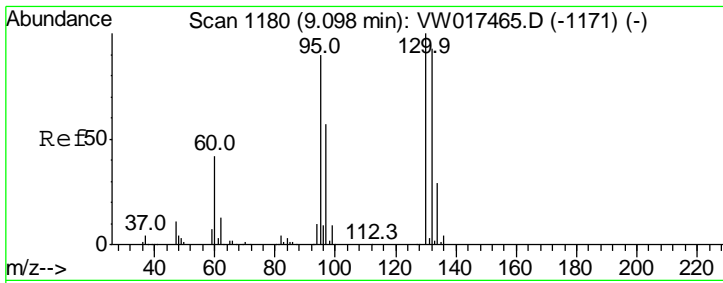
Tgt Ion: 117 Resp: 926100
 Ion Ratio Lower Upper
 117 100
 119 96.9 75.8 113.8



#34
 Benzene
 Concen: 104.165 ug/L
 RT: 8.33 min Scan# 1054
 Delta R.T. -0.00 min
 Lab File: VW017467.D
 Acq: 24 Nov 2020 12:15

Tgt Ion: 78 Resp: 2332088



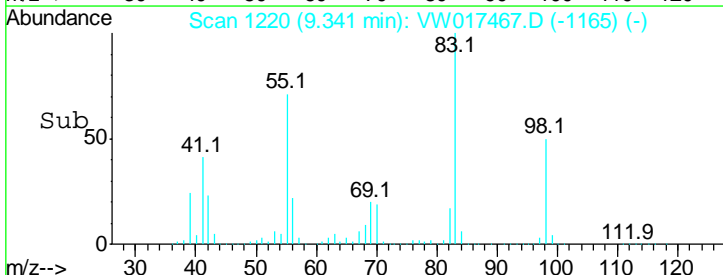
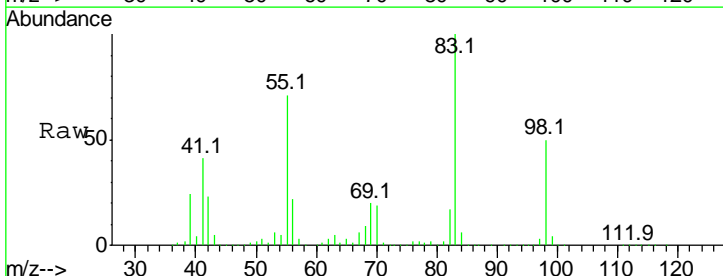
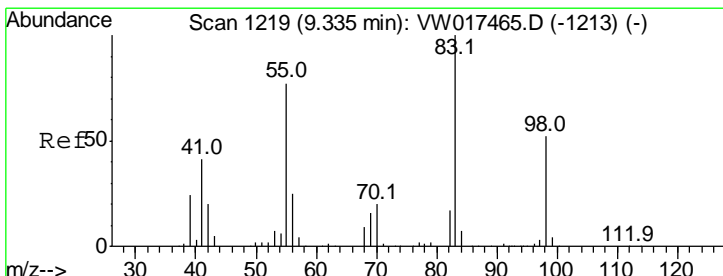
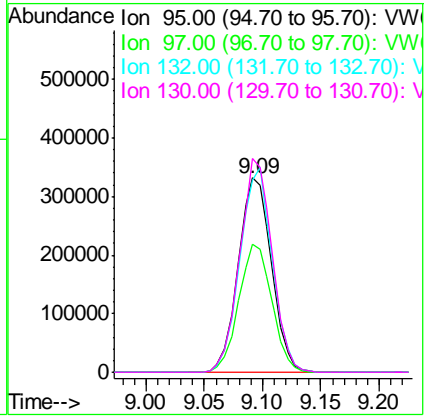


#35
 Trichloroethene
 Concen: 96.719 ug/L
 RT: 9.09 min Scan# 1179
 Delta R.T. -0.01 min
 Lab File: VW017467.D
 Acq: 24 Nov 2020 12:15

Instrument :
 MSVOA_W
 ClientSampled :
 VSTD10004

Tgt Ion: 95 Resp: 660297

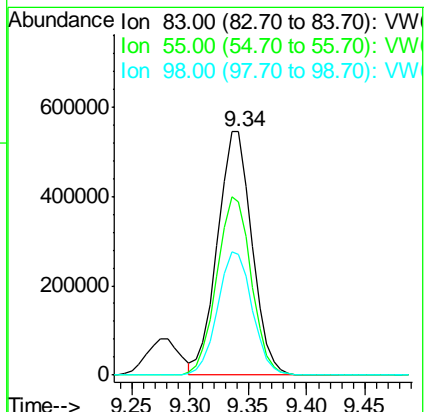
Ion	Ratio	Lower	Upper
95	100		
97	65.7	45.0	83.6
132	102.4	71.0	131.8
130	107.1	75.6	140.4

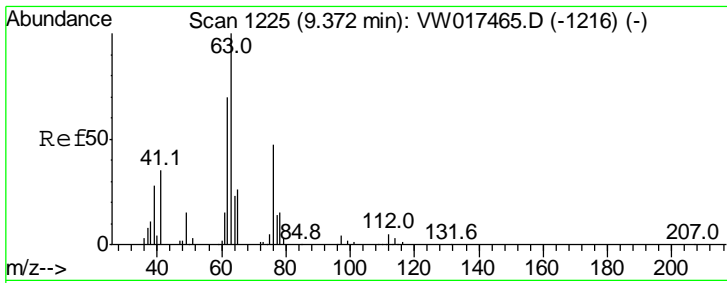


#36
 Methylcyclohexane
 Concen: 100.176 ug/L
 RT: 9.34 min Scan# 1220
 Delta R.T. 0.01 min
 Lab File: VW017467.D
 Acq: 24 Nov 2020 12:15

Tgt Ion: 83 Resp: 1118490

Ion	Ratio	Lower	Upper
83	100		
55	73.0	59.4	89.0
98	50.8	40.7	61.1

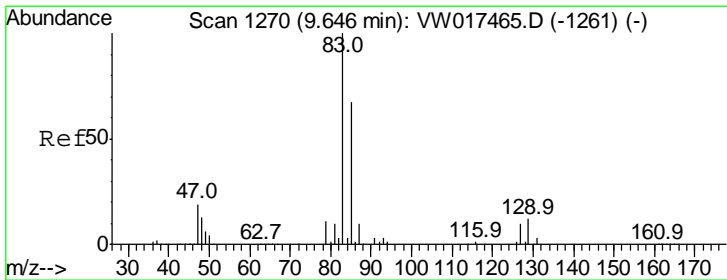
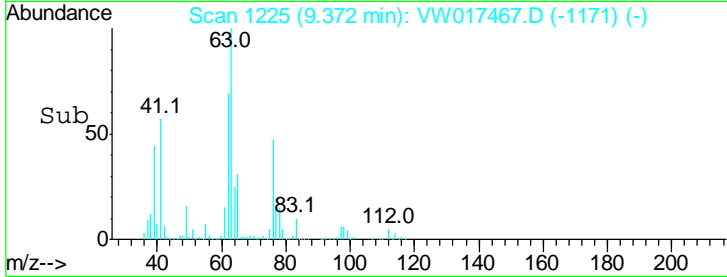
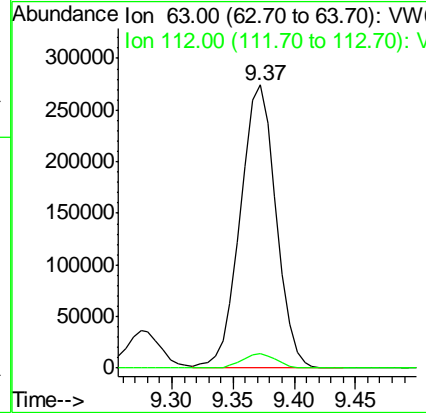
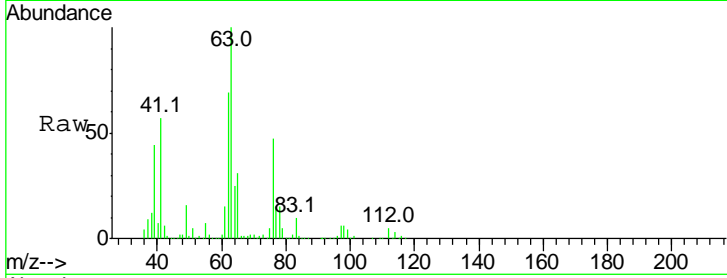




#40
 1,2-Dichloropropane
 Concen: 98.819 ug/L
 RT: 9.37 min Scan# 1225
 Delta R.T. 0.00 min
 Lab File: VW017467.D
 Acq: 24 Nov 2020 12:15

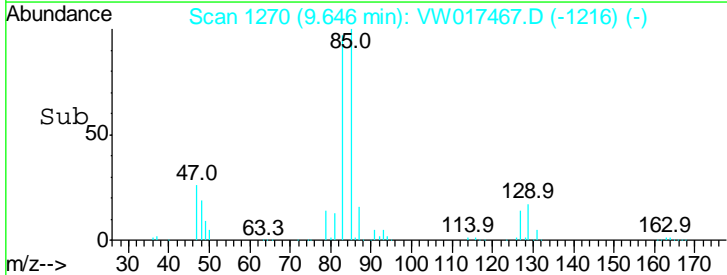
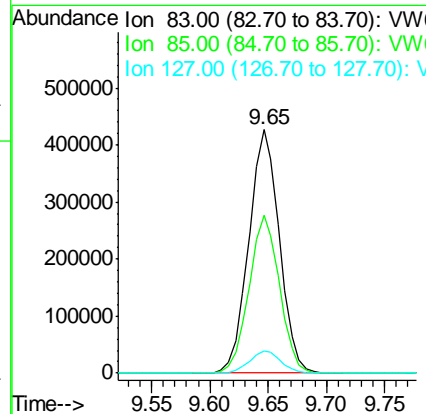
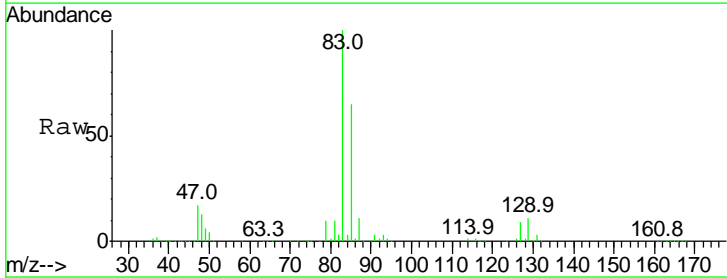
Instrument :
 MSVOA_W
ClientSampled :
 VSTD10004

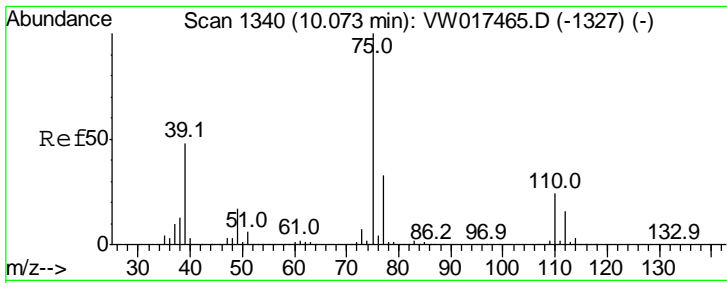
Tgt Ion: 63 Resp: 555271
 Ion Ratio Lower Upper
 63 100
 112 4.9 4.2 6.4



#41
 Bromodichloromethane
 Concen: 99.846 ug/L
 RT: 9.65 min Scan# 1270
 Delta R.T. -0.00 min
 Lab File: VW017467.D
 Acq: 24 Nov 2020 12:15

Tgt Ion: 83 Resp: 783267
 Ion Ratio Lower Upper
 83 100
 85 64.8 46.8 86.8
 127 9.0 7.6 11.4

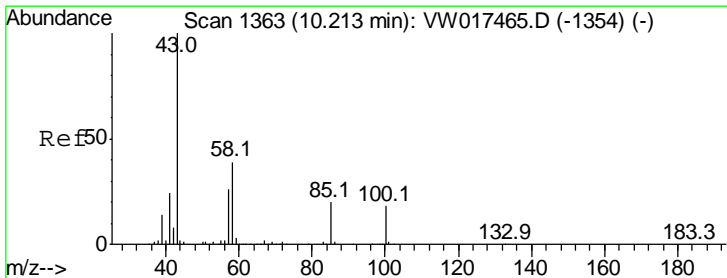
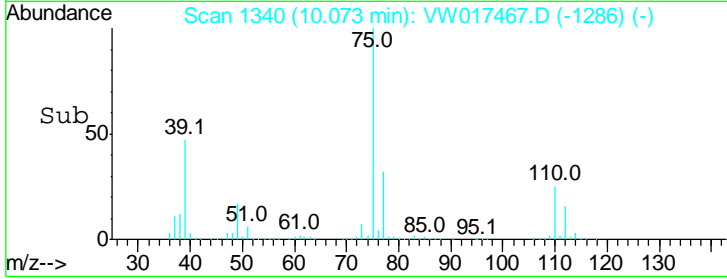
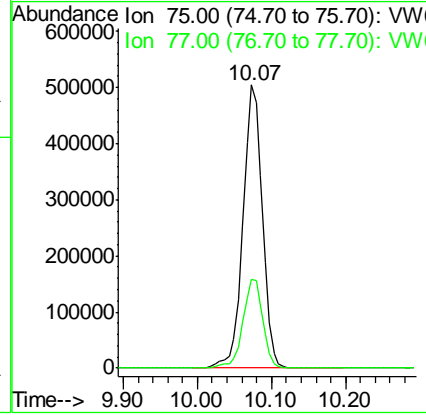
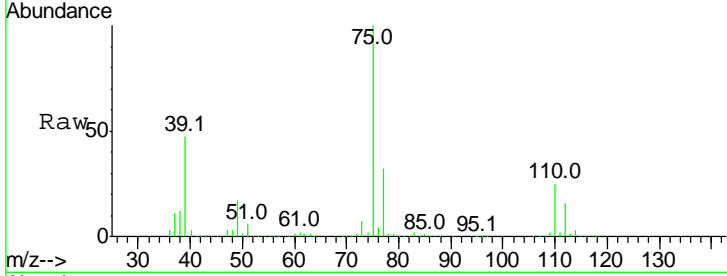




#42
 cis-1,3-Dichloropropene
 Concen: 102.911 ug/L
 RT: 10.07 min Scan# 1340
 Delta R.T. -0.00 min
 Lab File: VW017467.D
 Acq: 24 Nov 2020 12:15

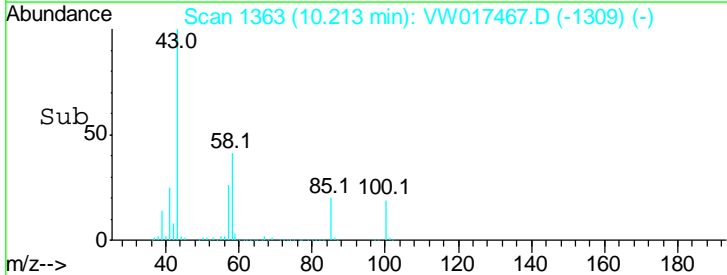
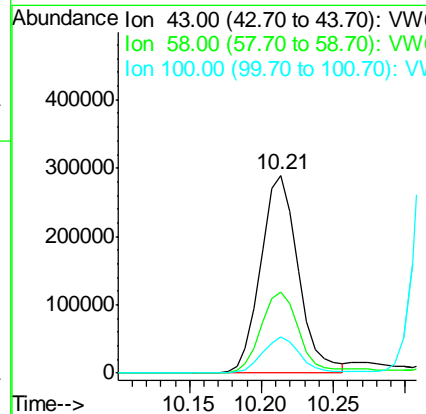
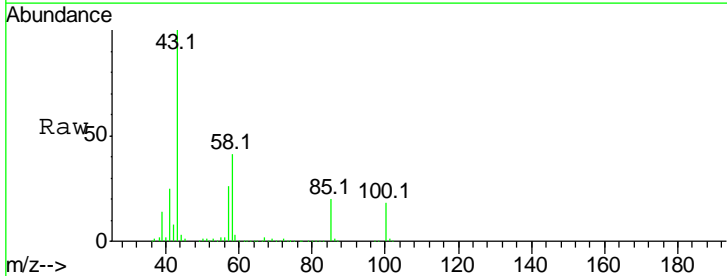
Instrument :
 MSVOA_W
 ClientSampled :
 VSTD10004

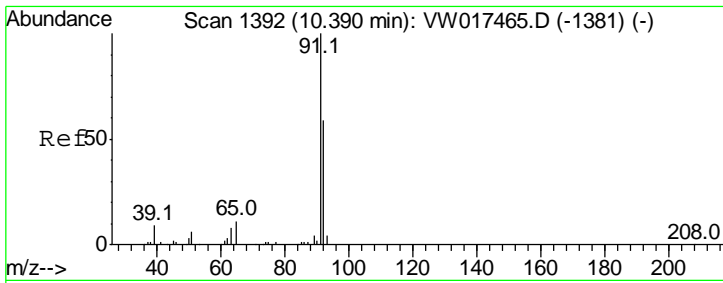
Tgt Ion: 75 Resp: 923224
 Ion Ratio Lower Upper
 75 100
 77 31.5 22.7 42.3



#43
 4-Methyl-2-pentanone
 Concen: 190.558 ug/L
 RT: 10.21 min Scan# 1363
 Delta R.T. -0.00 min
 Lab File: VW017467.D
 Acq: 24 Nov 2020 12:15

Tgt Ion: 43 Resp: 522678
 Ion Ratio Lower Upper
 43 100
 58 43.5 31.6 47.4
 100 18.0 14.1 21.1

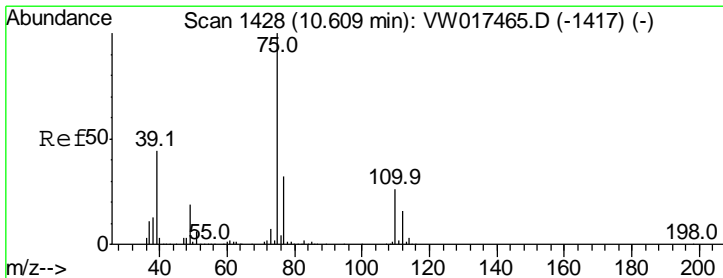
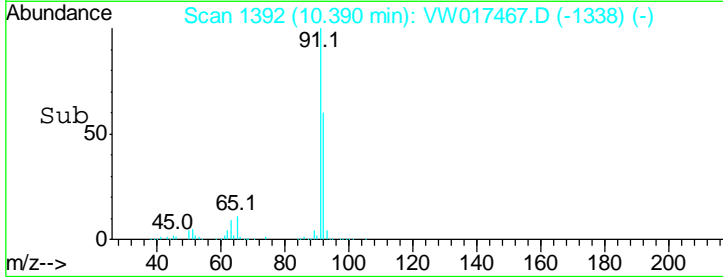
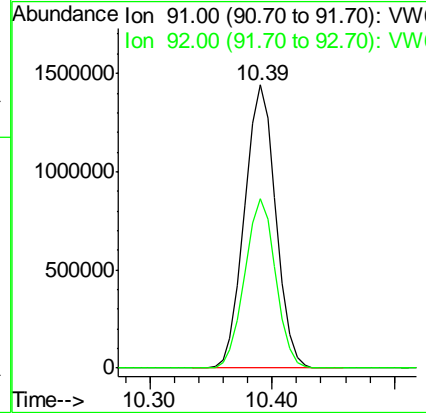
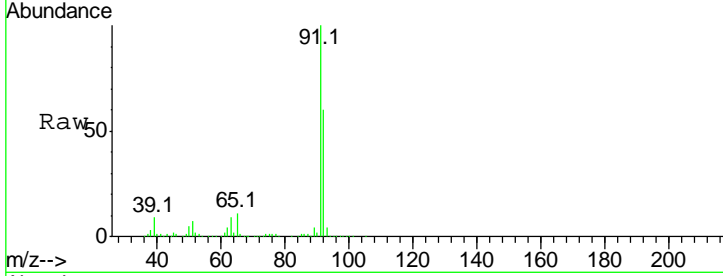




#44
 Toluene
 Concen: 93.639 ug/L
 RT: 10.39 min Scan# 1392
 Delta R.T. -0.00 min
 Lab File: VW017467.D
 Acq: 24 Nov 2020 12:15

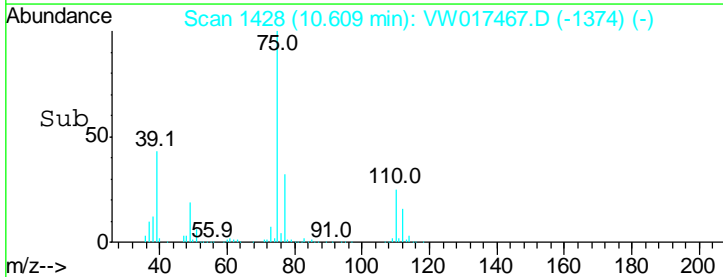
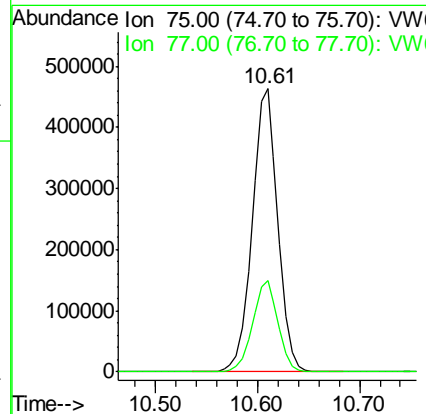
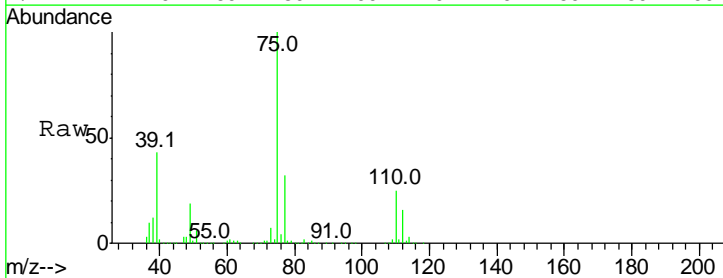
Instrument : MSVOA_W
 ClientSampled : VSTD10004

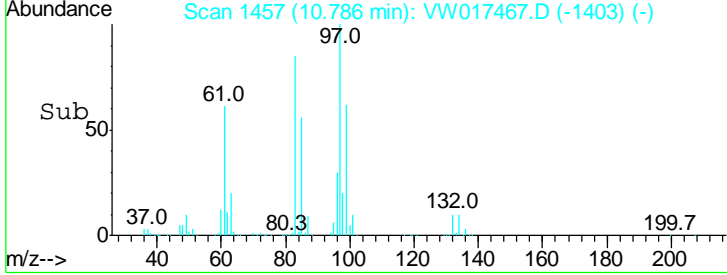
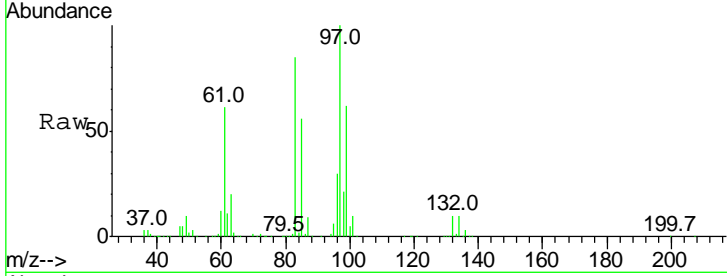
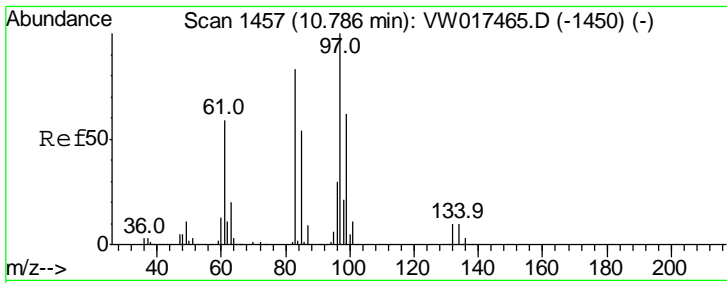
Tgt Ion: 91 Resp: 2548598
 Ion Ratio Lower Upper
 91 100
 92 60.0 41.6 77.3



#45
 trans-1,3-Dichloropropene
 Concen: 103.631 ug/L
 RT: 10.61 min Scan# 1428
 Delta R.T. 0.00 min
 Lab File: VW017467.D
 Acq: 24 Nov 2020 12:15

Tgt Ion: 75 Resp: 805097
 Ion Ratio Lower Upper
 75 100
 77 32.4 22.6 42.0

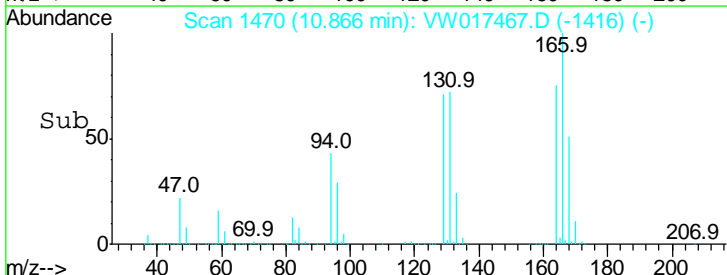
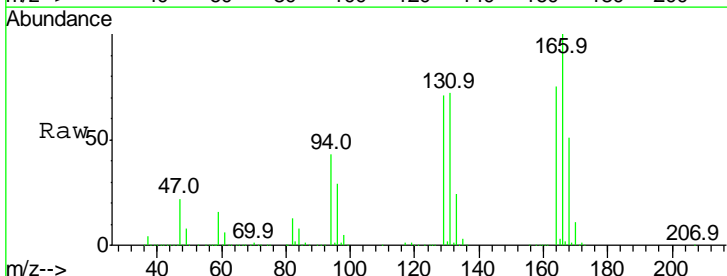
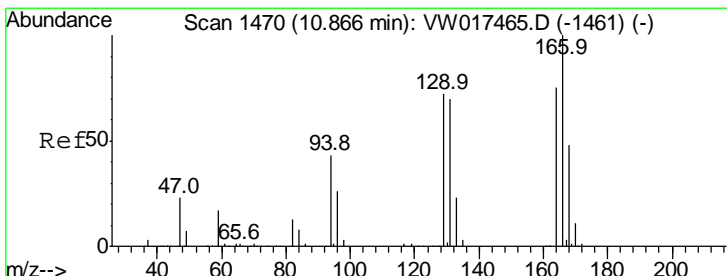
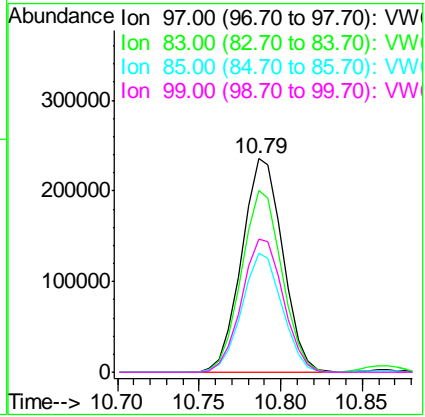




#46
 1,1,2-Trichloroethane
 Concen: 86.155 ug/L
 RT: 10.79 min Scan# 1457
 Delta R.T. 0.00 min
 Lab File: VW017467.D
 Acq: 24 Nov 2020 12:15

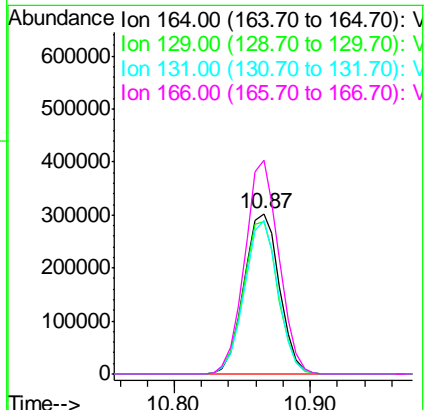
Instrument : MSVOA_W
 ClientSampled : VSTD10004

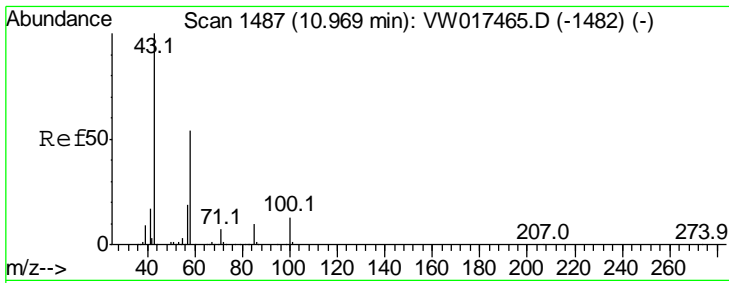
Tgt Ion	Resp	Lower	Upper
97	100		
83	85.2	58.5	108.7
85	55.9	37.8	70.2
99	62.2	43.7	81.1



#47
 Tetrachloroethene
 Concen: 83.998 ug/L
 RT: 10.87 min Scan# 1470
 Delta R.T. 0.00 min
 Lab File: VW017467.D
 Acq: 24 Nov 2020 12:15

Tgt Ion	Resp	Lower	Upper
164	100		
129	94.9	67.6	125.6
131	95.9	65.2	121.2
166	133.1	93.2	173.2

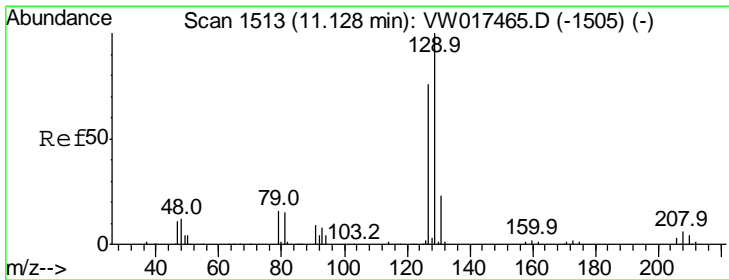
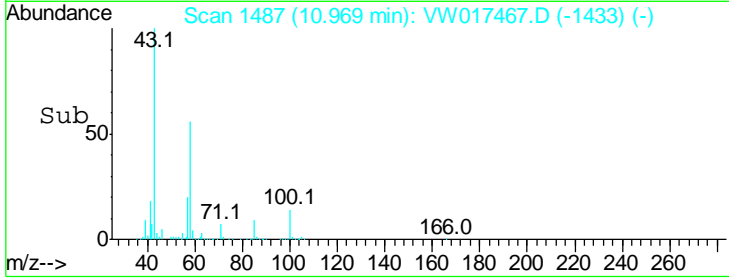
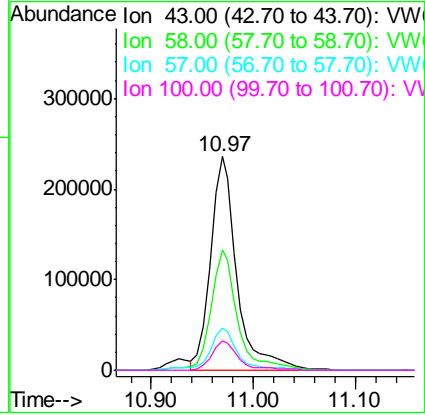
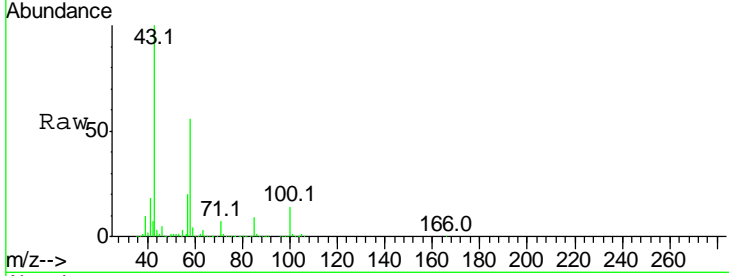




#49
 2-Hexanone
 Concen: 224.425 ug/L
 RT: 10.97 min Scan# 1487
 Delta R.T. -0.00 min
 Lab File: VW017467.D
 Acq: 24 Nov 2020 12:15

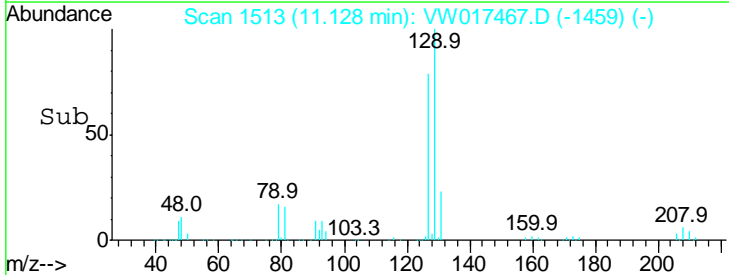
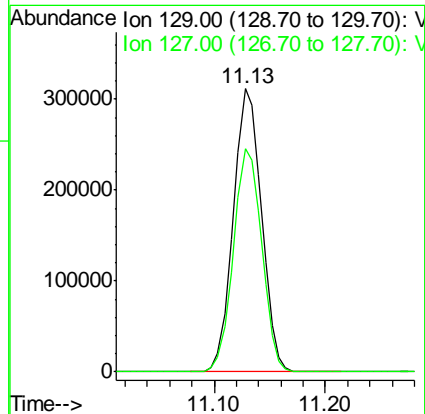
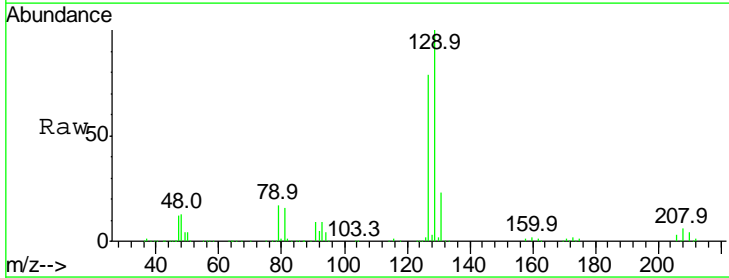
Instrument :
 MSVOA_W
 ClientSampled :
 VSTD10004

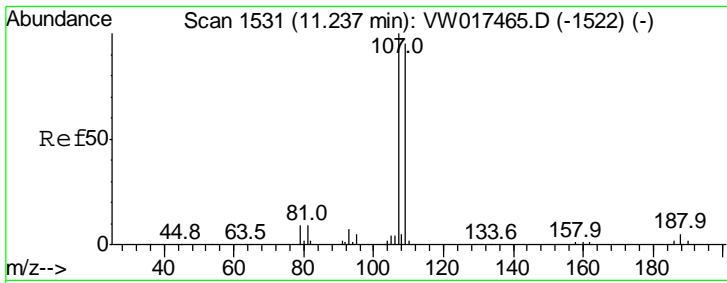
Tgt Ion	Resp	Lower	Upper
43	100		
58	56.1	51.3	76.9
57	19.9	15.0	22.6
100	14.2	12.2	18.2



#50
 Dibromochloromethane
 Concen: 93.133 ug/L
 RT: 11.13 min Scan# 1513
 Delta R.T. 0.00 min
 Lab File: VW017467.D
 Acq: 24 Nov 2020 12:15

Tgt Ion	Resp	Lower	Upper
129	100		
127	79.0	53.2	98.8

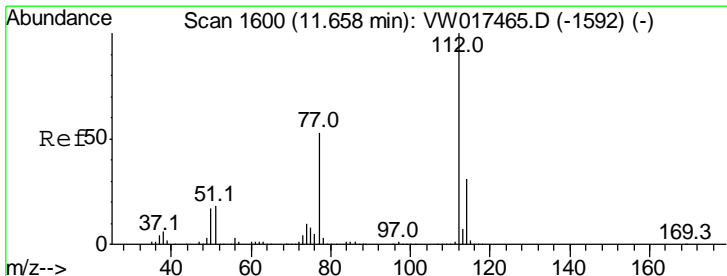
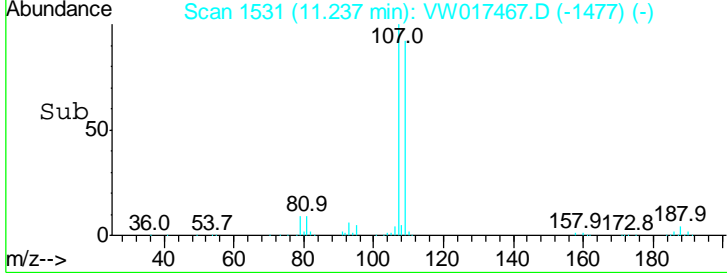
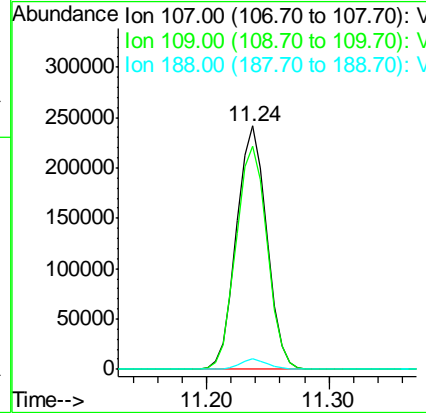
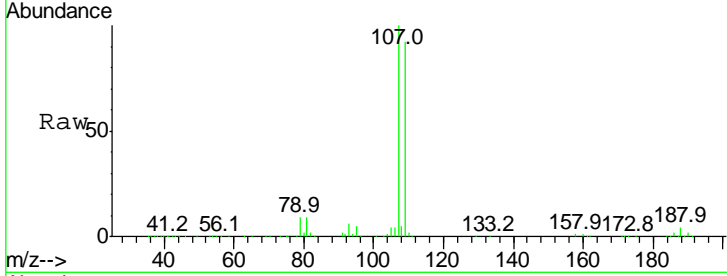




#51
 1,2-Dibromoethane
 Concen: 93.658 ug/L
 RT: 11.24 min Scan# 1531
 Delta R.T. -0.00 min
 Lab File: VW017467.D
 Acq: 24 Nov 2020 12:15

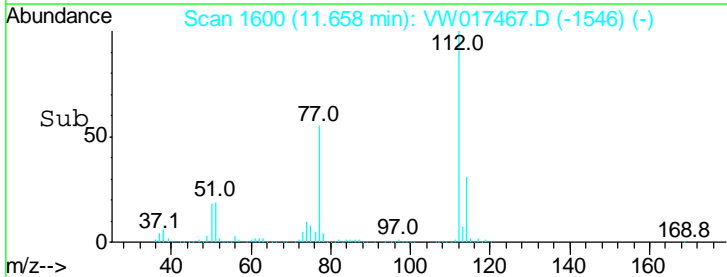
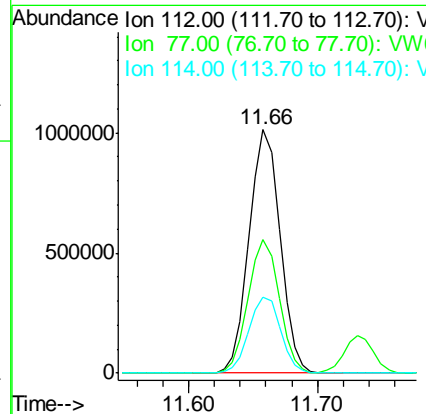
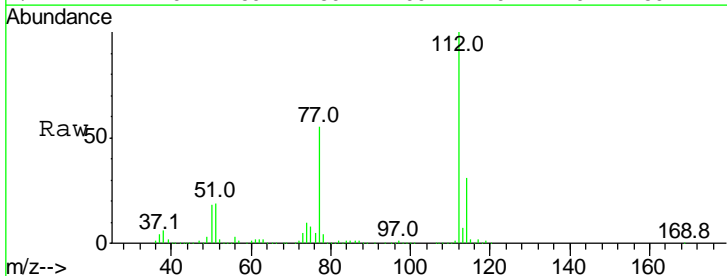
Instrument :
 MSVOA_W
 ClientSampled :
 VSTD10004

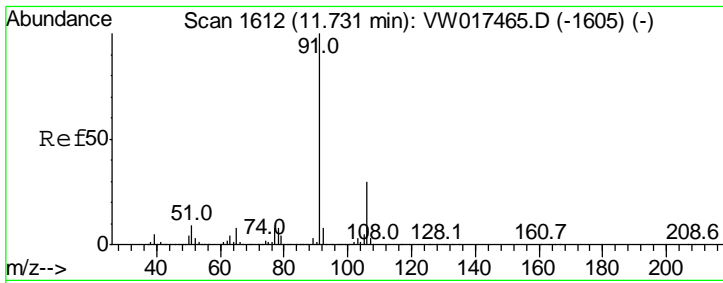
Tgt Ion	Resp	Lower	Upper
107	100		
109	91.5	66.4	123.2
188	4.3	4.0	6.0



#52
 Chlorobenzene
 Concen: 95.614 ug/L
 RT: 11.66 min Scan# 1600
 Delta R.T. -0.00 min
 Lab File: VW017467.D
 Acq: 24 Nov 2020 12:15

Tgt Ion	Resp	Lower	Upper
112	100		
77	55.0	42.6	64.0
114	31.2	21.6	40.2

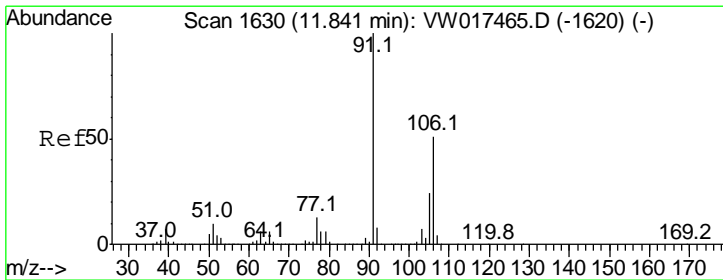
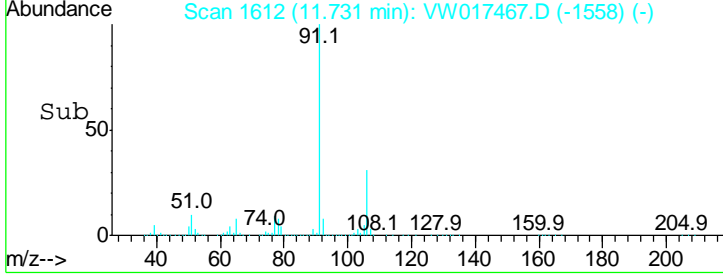
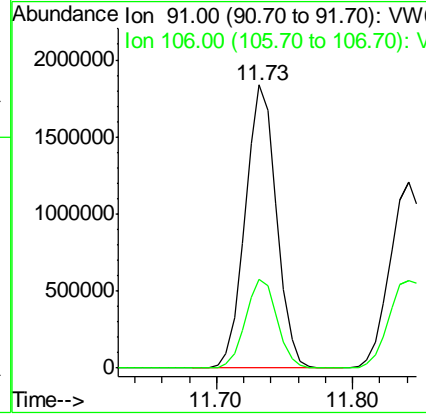
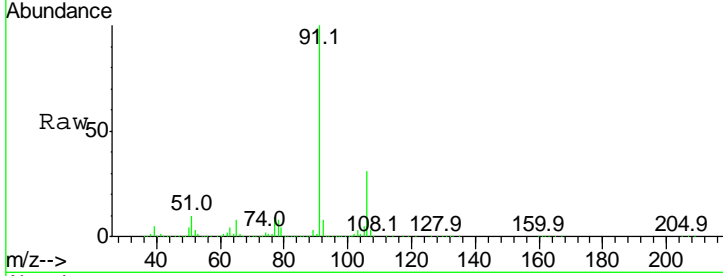




#53
 Ethylbenzene
 Concen: 99.684 ug/L
 RT: 11.73 min Scan# 1612
 Delta R.T. 0.00 min
 Lab File: VW017467.D
 Acq: 24 Nov 2020 12:15

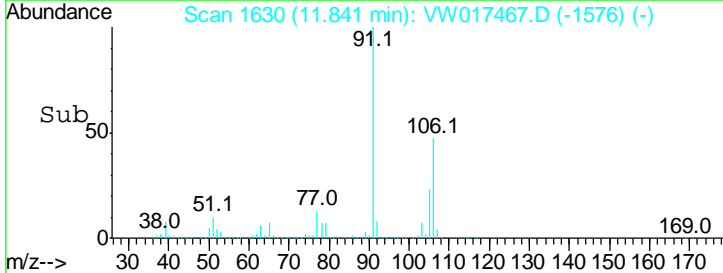
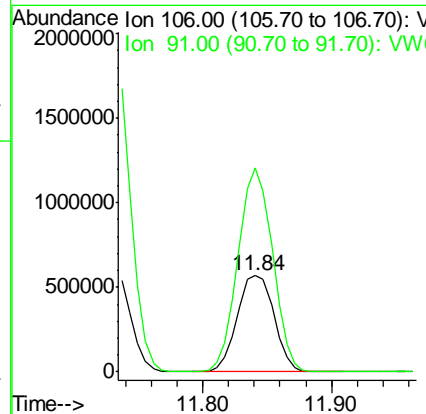
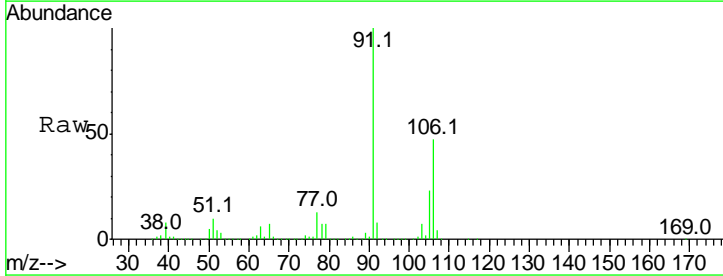
Instrument : MSVOA_W
 ClientSampled : VSTD10004

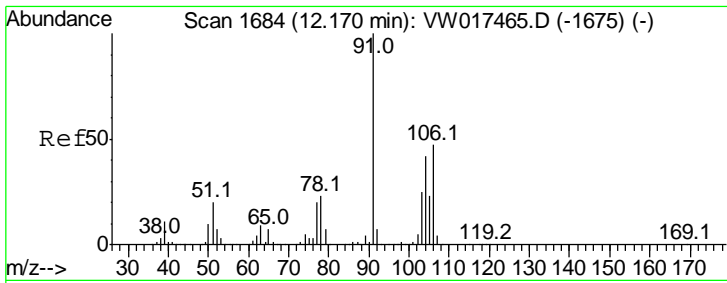
Tgt Ion: 91 Resp: 2944777
 Ion Ratio Lower Upper
 91 100
 106 31.4 21.1 39.1



#54
 m,p-Xylene
 Concen: 97.750 ug/L
 RT: 11.84 min Scan# 1630
 Delta R.T. -0.00 min
 Lab File: VW017467.D
 Acq: 24 Nov 2020 12:15

Tgt Ion: 106 Resp: 1130003
 Ion Ratio Lower Upper
 106 100
 91 212.2 136.4 253.4

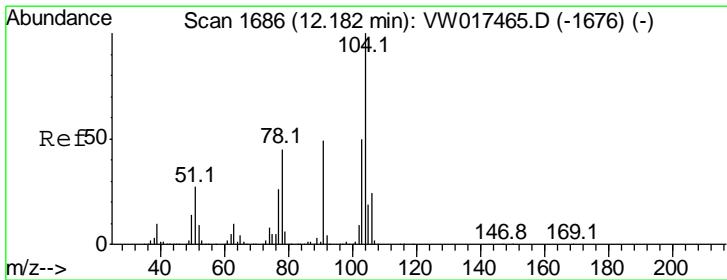
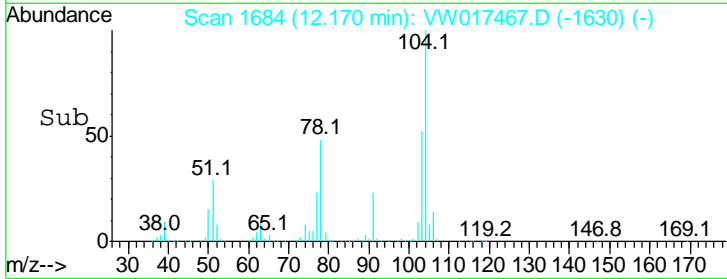
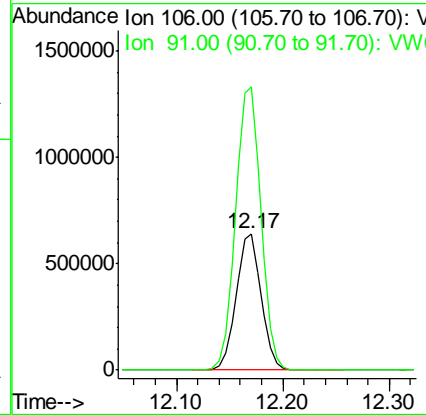
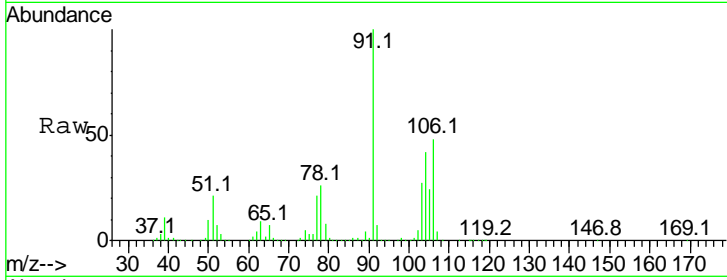




#55
 o-xylene
 Concen: 93.648 ug/L
 RT: 12.17 min Scan# 1684
 Delta R.T. -0.00 min
 Lab File: VW017467.D
 Acq: 24 Nov 2020 12:15

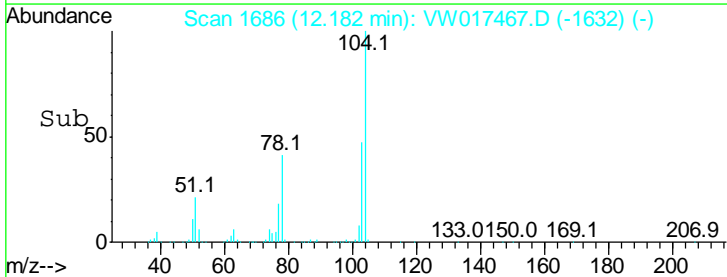
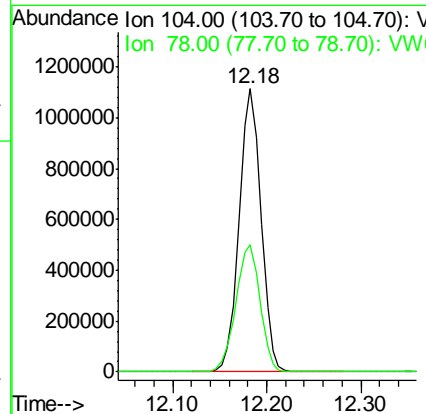
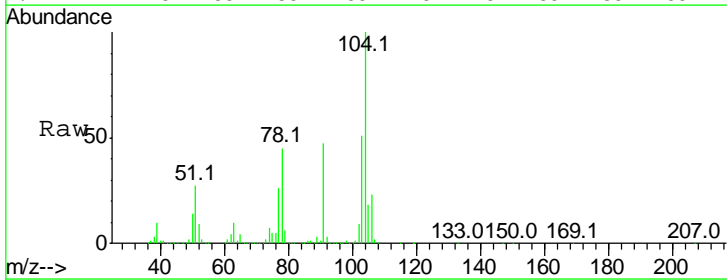
Instrument :
 MSVOA_W
 ClientSampled :
 VSTD10004

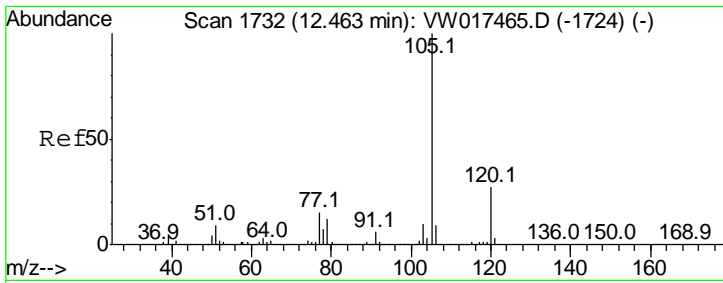
Tgt Ion:106 Resp: 1050513
 Ion Ratio Lower Upper
 106 100
 91 207.6 147.6 274.2



#56
 Styrene
 Concen: 93.917 ug/L
 RT: 12.18 min Scan# 1686
 Delta R.T. -0.00 min
 Lab File: VW017467.D
 Acq: 24 Nov 2020 12:15

Tgt Ion:104 Resp: 1793463
 Ion Ratio Lower Upper
 104 100
 78 45.1 31.3 58.1



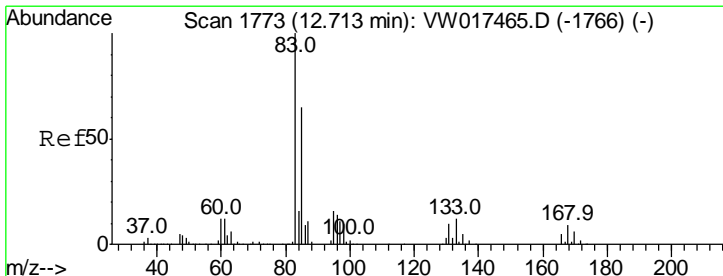
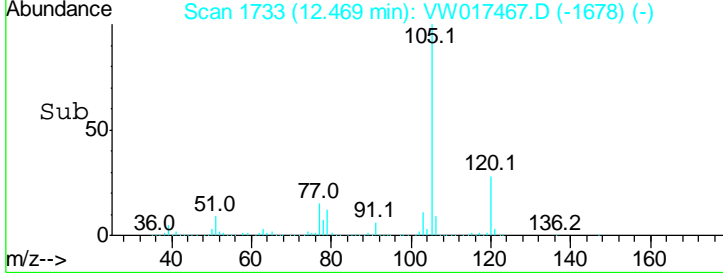
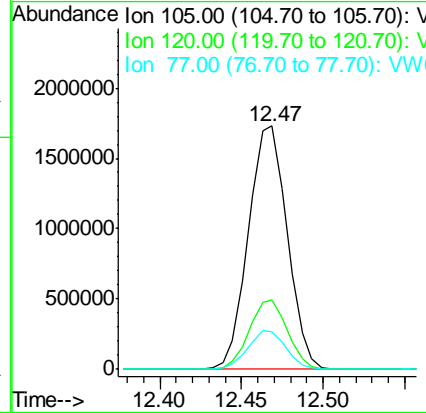
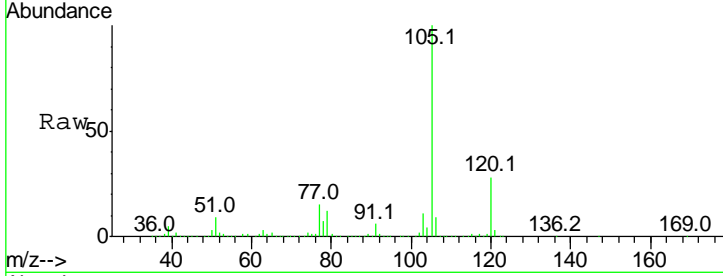


#57
 Isopropylbenzene
 Concen: 91.994 ug/L
 RT: 12.47 min Scan# 1733
 Delta R.T. 0.01 min
 Lab File: VW017467.D
 Acq: 24 Nov 2020 12:15

Instrument :
 MSVOA_W
 ClientSampled :
 VSTD10004

Tgt Ion: 105 Resp: 2874224

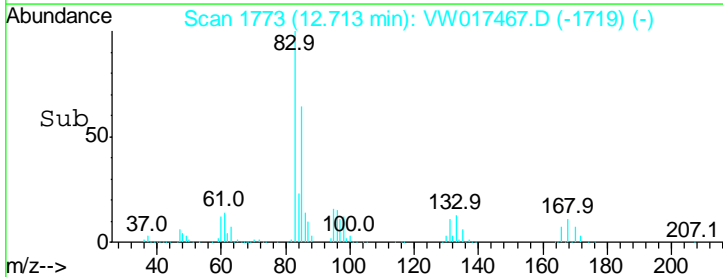
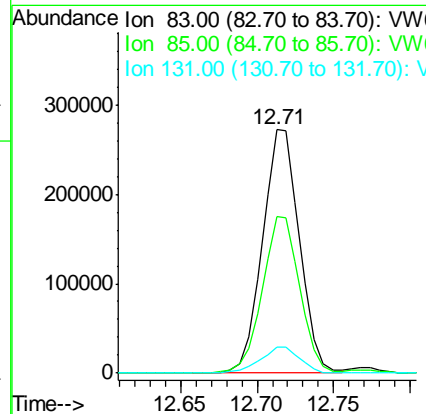
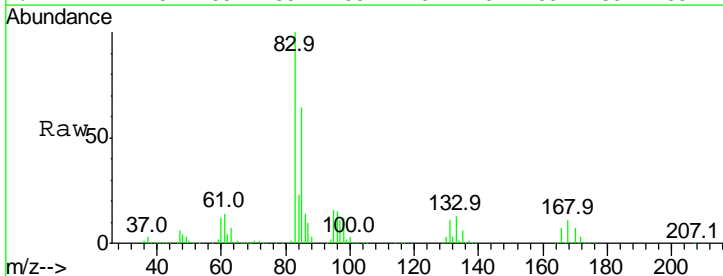
Ion	Ratio	Lower	Upper
105	100		
120	27.9	21.4	32.2
77	15.5	12.1	18.1

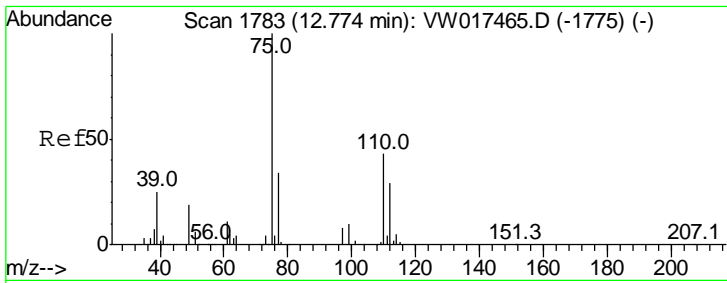


#58
 1,1,2,2-Tetrachloroethane
 Concen: 88.771 ug/L
 RT: 12.71 min Scan# 1773
 Delta R.T. -0.00 min
 Lab File: VW017467.D
 Acq: 24 Nov 2020 12:15

Tgt Ion: 83 Resp: 457498

Ion	Ratio	Lower	Upper
83	100		
85	64.5	45.3	84.1
131	10.8	8.3	12.5

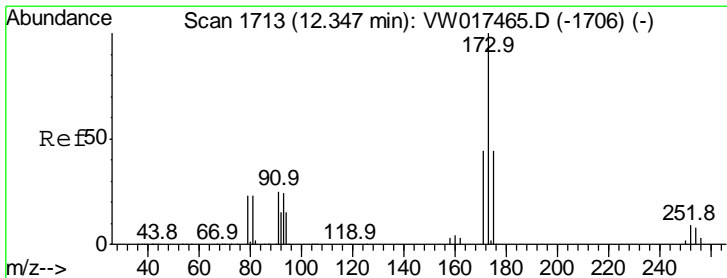
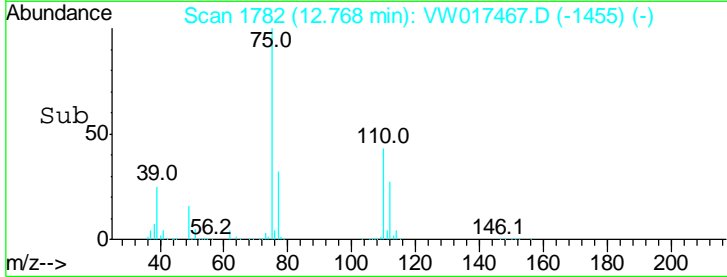
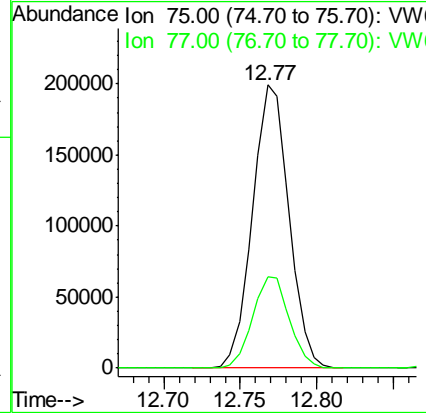
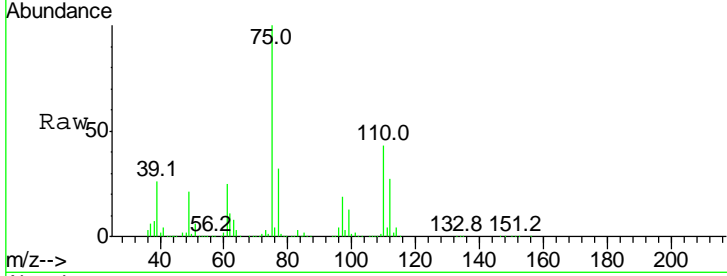




#59
 1,2,3-Trichloropropane
 Concen: 89.719 ug/L
 RT: 12.77 min Scan# 1782
 Delta R.T. -0.01 min
 Lab File: VW017467.D
 Acq: 24 Nov 2020 12:15

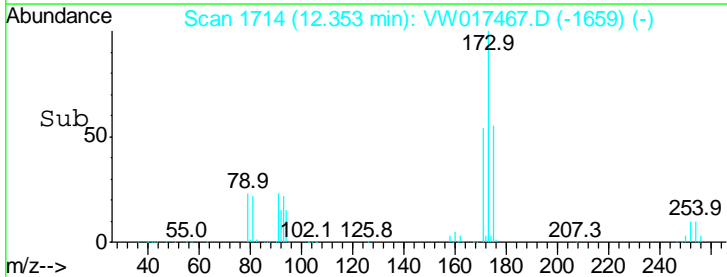
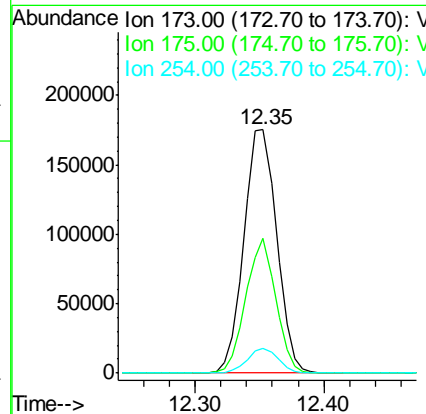
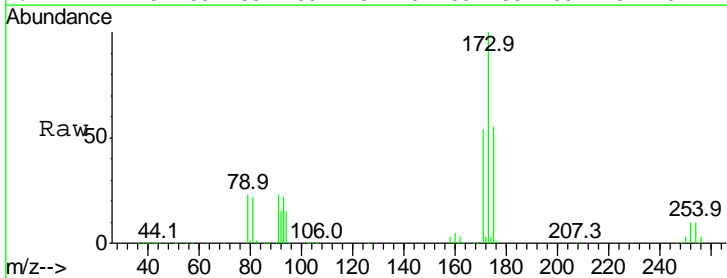
Instrument : MSVOA_W
 ClientSampled : VSTD10004

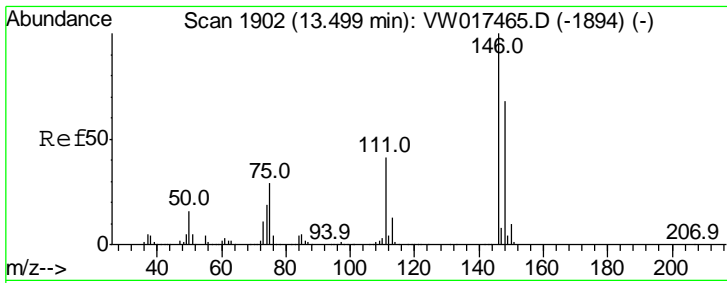
Tgt Ion: 75 Resp: 330552
 Ion Ratio Lower Upper
 75 100
 77 32.5 26.6 39.8



#62
 Bromoform
 Concen: 97.174 ug/L
 RT: 12.35 min Scan# 1714
 Delta R.T. 0.01 min
 Lab File: VW017467.D
 Acq: 24 Nov 2020 12:15

Tgt Ion: 173 Resp: 308828
 Ion Ratio Lower Upper
 173 100
 175 50.4 39.1 58.7
 254 9.7 7.1 10.7

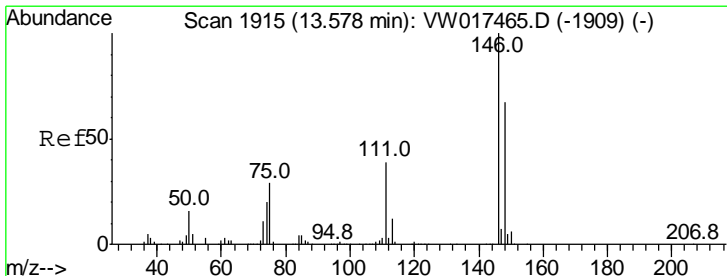
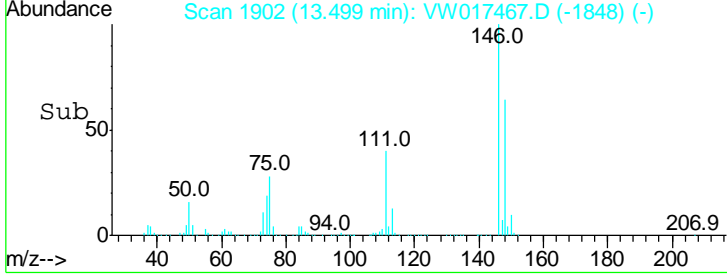
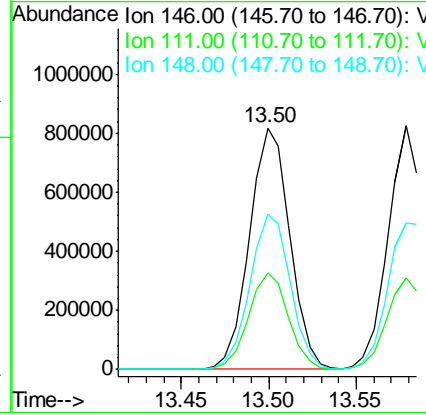
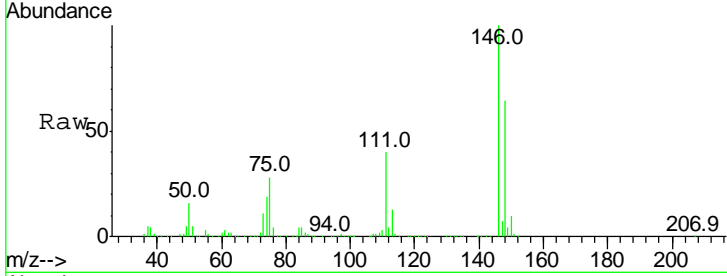




#63
 1,3-Dichlorobenzene
 Concen: 95.850 ug/L
 RT: 13.50 min Scan# 1902
 Delta R.T. -0.00 min
 Lab File: VW017467.D
 Acq: 24 Nov 2020 12:15

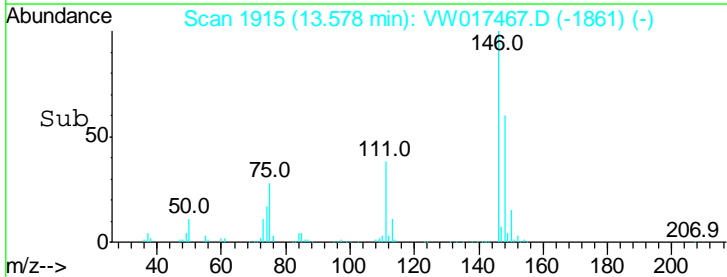
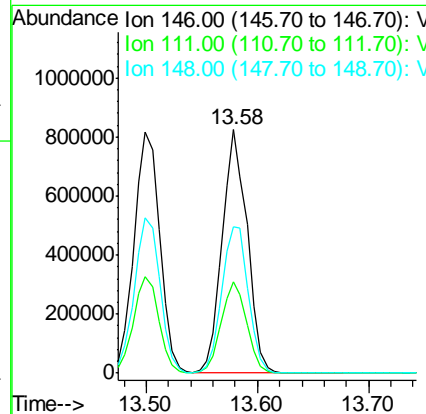
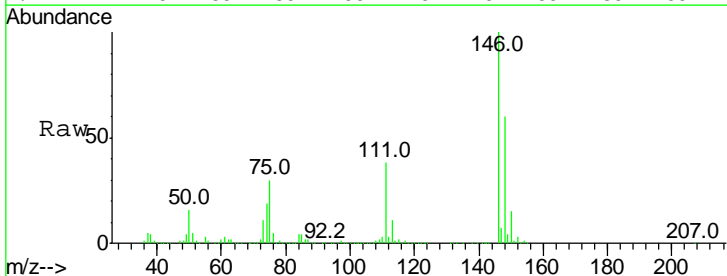
Instrument : MSVOA_W
 ClientSampled : VSTD10004

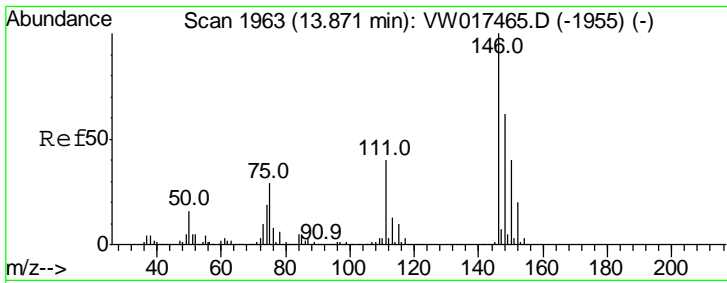
Tgt Ion	Resp	Lower	Upper
146	1315173		
146	100		
111	39.9	28.5	52.9
148	64.3	47.8	88.8



#64
 1,4-Dichlorobenzene
 Concen: 92.636 ug/L
 RT: 13.58 min Scan# 1915
 Delta R.T. -0.00 min
 Lab File: VW017467.D
 Acq: 24 Nov 2020 12:15

Tgt Ion	Resp	Lower	Upper
146	1278831		
146	100		
111	37.7	27.7	51.5
148	60.0	47.0	87.2



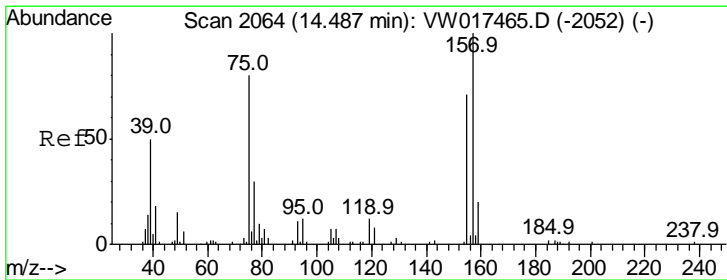
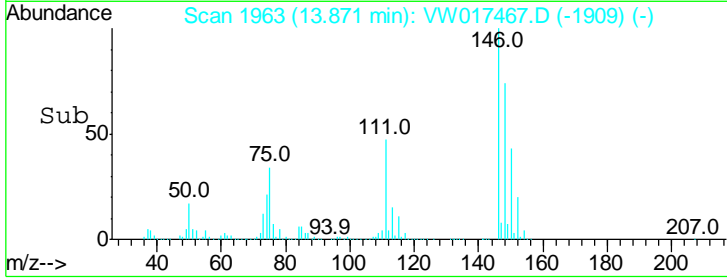
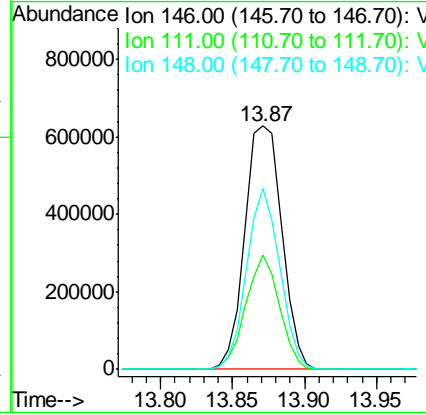
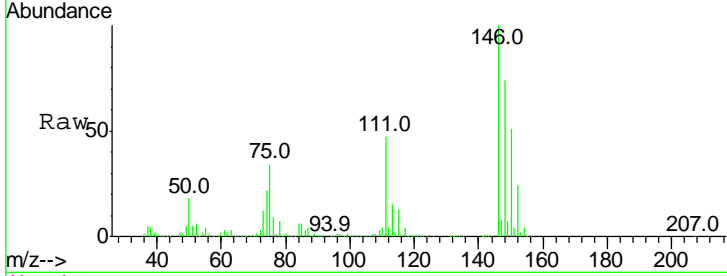


#65
 1,2-Dichlorobenzene
 Concen: 91.243 ug/L
 RT: 13.87 min Scan# 1963
 Delta R.T. -0.00 min
 Lab File: VW017467.D
 Acq: 24 Nov 2020 12:15

Instrument :
 MSVOA_W
 ClientSampled :
 VSTD10004

Tgt Ion: 146 Resp: 1122977

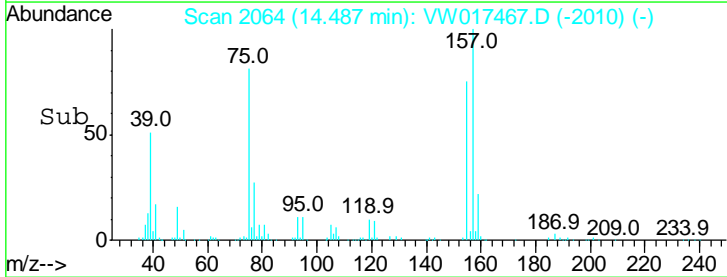
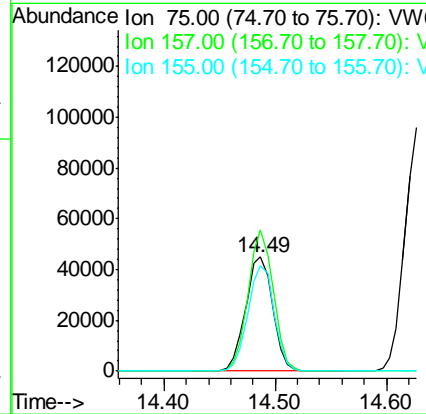
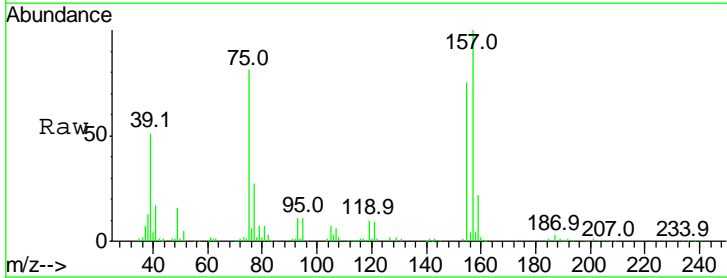
Ion	Ratio	Lower	Upper
146	100		
111	47.1	31.7	47.5
148	74.2	49.3	73.9#

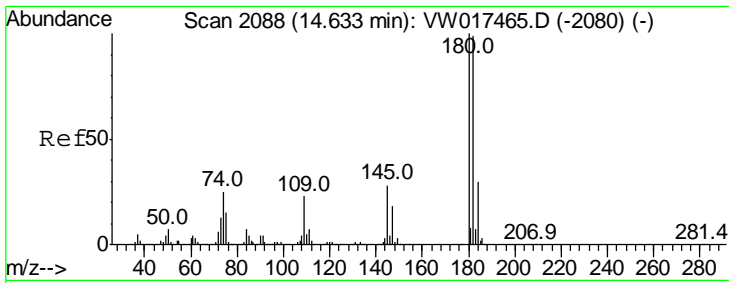


#66
 1,2-Dibromo-3-chloropropane
 Concen: 105.719 ug/L
 RT: 14.49 min Scan# 2064
 Delta R.T. -0.00 min
 Lab File: VW017467.D
 Acq: 24 Nov 2020 12:15

Tgt Ion: 75 Resp: 76311

Ion	Ratio	Lower	Upper
75	100		
157	123.8	99.9	149.9
155	92.3	71.4	107.0

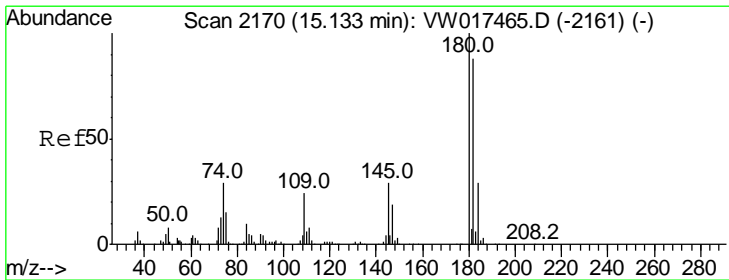
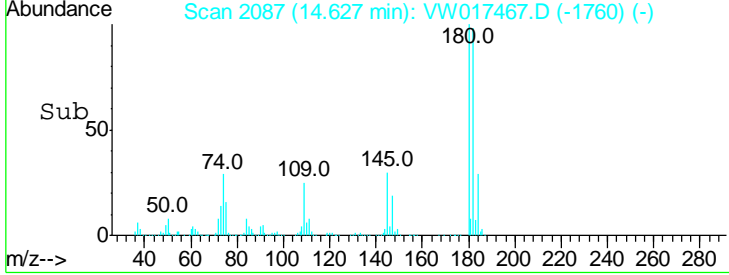
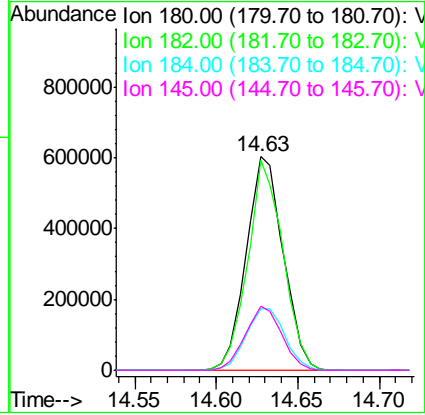
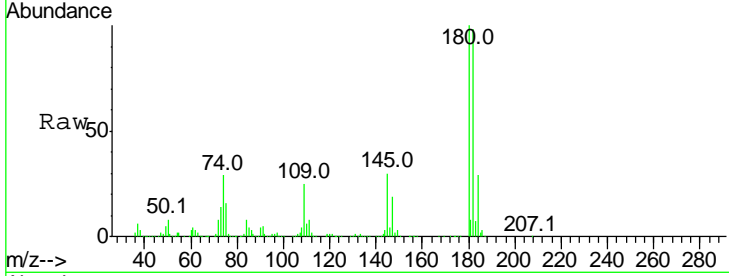




#67
 1,3,5-Trichlorobenzene
 Concen: 92.524 ug/L
 RT: 14.63 min Scan# 2087
 Delta R.T. -0.01 min
 Lab File: VW017467.D
 Acq: 24 Nov 2020 12:15

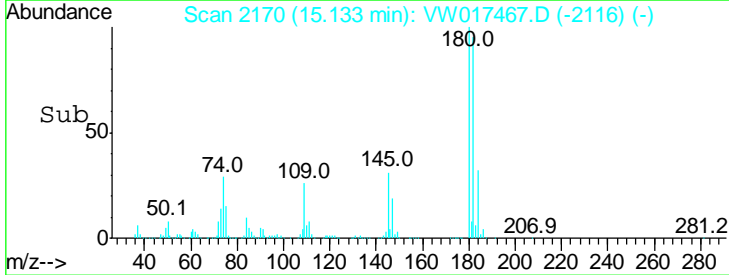
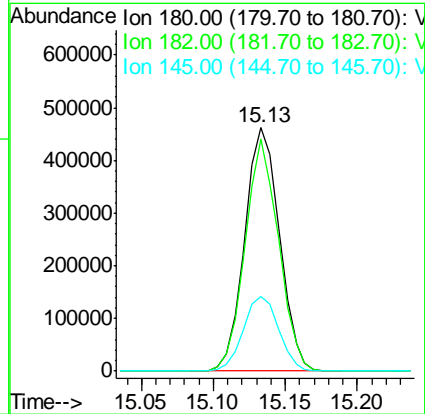
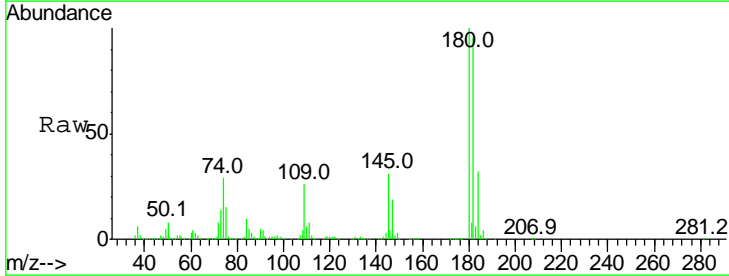
Instrument : MSVOA_W
 ClientSampled : VSTD10004

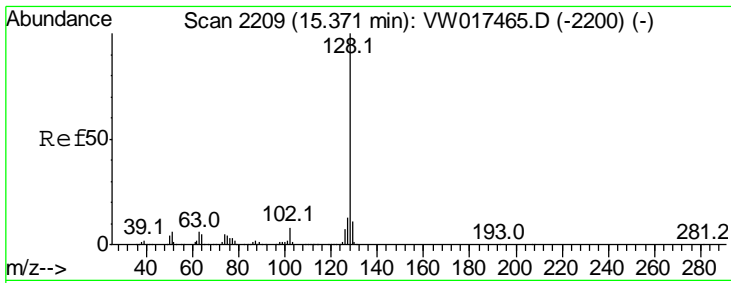
Tgt Ion	Resp	Lower	Upper
180	100		
182	93.7	77.0	115.6
184	30.5	24.2	36.4
145	29.7	23.5	35.3



#68
 1,2,4-trichlorobenzene
 Concen: 84.573 ug/L
 RT: 15.13 min Scan# 2170
 Delta R.T. -0.00 min
 Lab File: VW017467.D
 Acq: 24 Nov 2020 12:15

Tgt Ion	Resp	Lower	Upper
180	100		
182	91.7	71.3	106.9
145	31.3	24.0	36.0



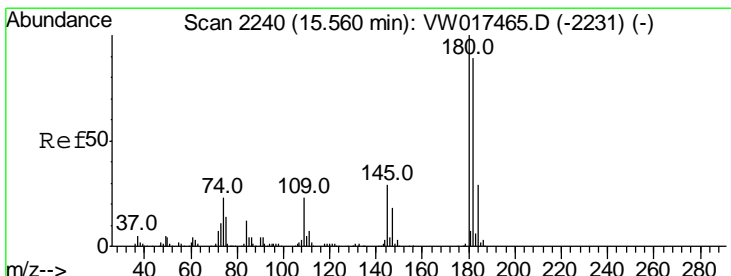
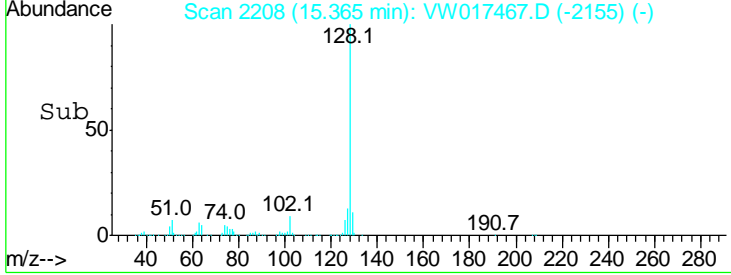
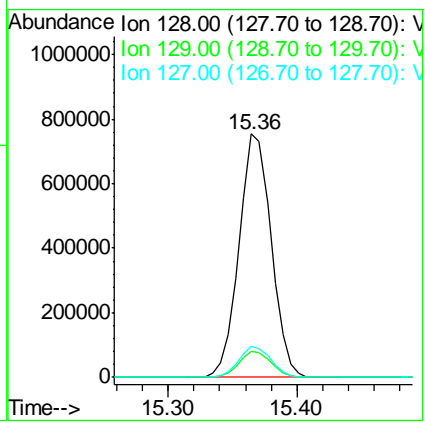
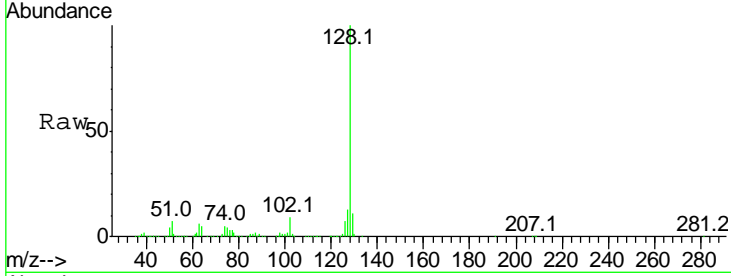


#69
 Naphthalene
 Concen: 92.760 ug/L
 RT: 15.36 min Scan# 2208
 Delta R.T. -0.01 min
 Lab File: VW017467.D
 Acq: 24 Nov 2020 12:15

Instrument : MSVOA_W
 ClientSampled : VSTD10004

Tgt Ion:128 Resp: 1303625

Ion	Ratio	Lower	Upper
128	100		
129	10.8	8.7	13.1
127	12.9	10.7	16.1



#70
 1,2,3-Trichlorobenzene
 Concen: 80.576 ug/L
 RT: 15.55 min Scan# 2239
 Delta R.T. -0.01 min
 Lab File: VW017467.D
 Acq: 24 Nov 2020 12:15

Tgt Ion:180 Resp: 652359

Ion	Ratio	Lower	Upper
180	100		
182	95.0	74.7	112.1
145	32.3	25.4	38.0

