

Data Path : Z:\voasrv\HPCHEM1\MSVOA_W\Data\VW121620\
 Data File : VW017659.D
 Acq On : 16 Dec 2020 13:31
 Operator : SY/VA
 Sample : L5009-05
 Misc : 5.02G/5ML/MSVOA_W/SOIL
 ALS Vial : 11 Sample Multiplier: 1

Instrument :
 MSVOA_W
 ClientSampled :

Quant Time: Dec 17 05:07:37 2020
 Quant Method : Z:\voasrv\HPCHEM1\MSVOA_W\Method\82W121420S.M
 Quant Title : SW846 8260
 QLast Update : Mon Dec 14 12:39:23 2020
 Response via : Initial Calibration

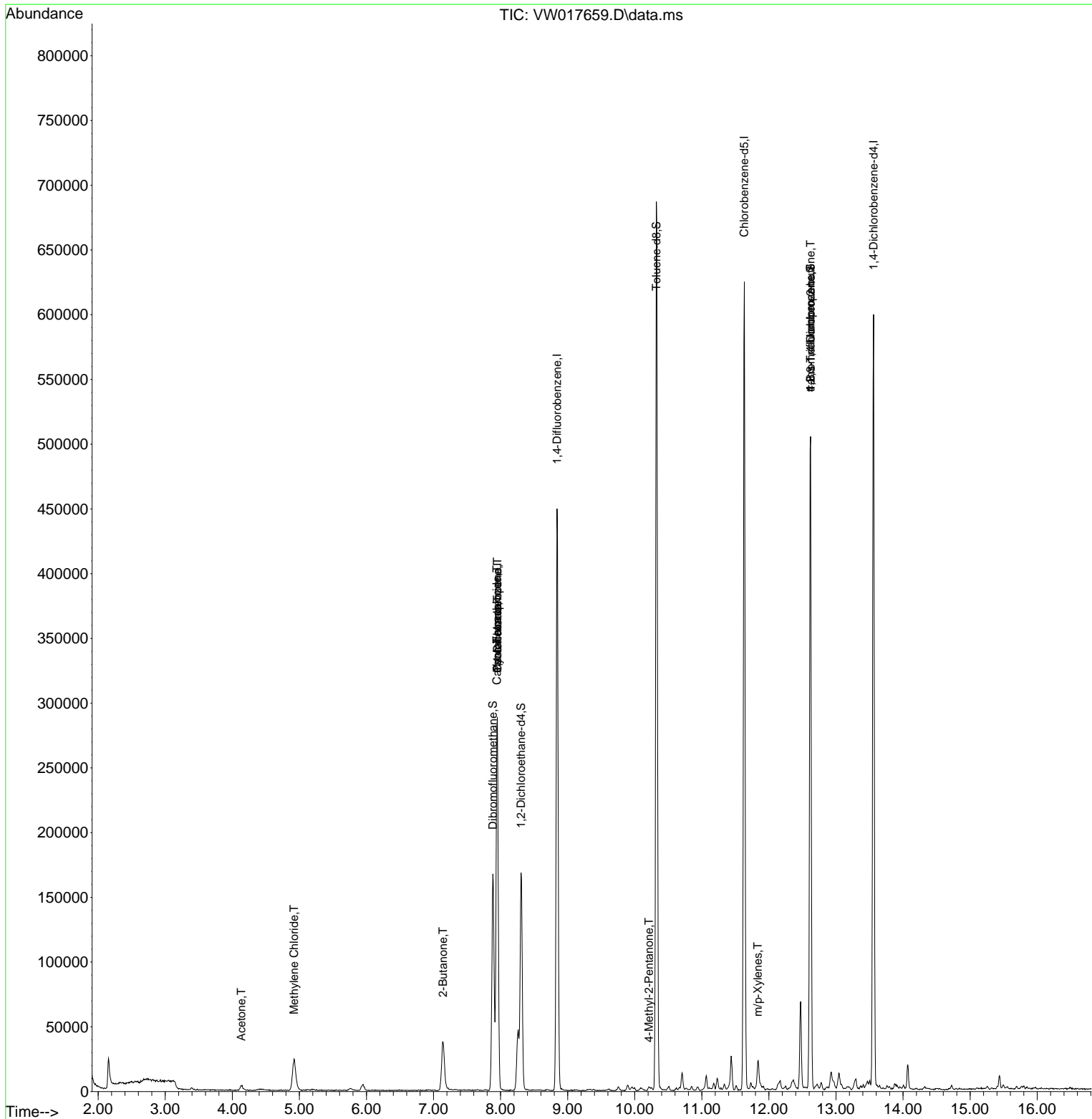
Compound	R.T.	QIon	Response	Conc	Units	Dev(Min)
Internal Standards						
1) Pentafluorobenzene	7.951	168	200170	50.00	ug/l	0.00
34) 1,4-Difluorobenzene	8.841	114	361035	50.00	ug/l	0.00
63) Chlorobenzene-d5	11.634	117	320776	50.00	ug/l	0.00
72) 1,4-Dichlorobenzene-d4	13.560	152	144007	50.00	ug/l	0.00
System Monitoring Compounds						
33) 1,2-Dichloroethane-d4	8.305	65	132913	54.51	ug/l	0.00
Spiked Amount	50.000		Recovery	=	109.02%	
35) Dibromofluoromethane	7.884	113	113551	47.53	ug/l	0.00
Spiked Amount	50.000		Recovery	=	95.06%	
50) Toluene-d8	10.323	98	445912	47.94	ug/l	0.00
Spiked Amount	50.000		Recovery	=	95.88%	
62) 4-Bromofluorobenzene	12.621	95	153265	46.15	ug/l	0.00
Spiked Amount	50.000		Recovery	=	92.30%	
Target Compounds						
11) Tert butyl alcohol	5.190	59	619	Below Cal	#	54
16) Acetone	4.135	43	6333	11.94	ug/l	98
20) Methylene Chloride	4.921	84	18708	2.98	ug/l	# 77
25) 2-Butanone	7.141	43	2413	3.42	ug/l	# 61
26) 2,2-Dichloropropane	7.141	77	3021	Below Cal	#	50
31) Cyclohexane	7.951	56	5847	1.39	ug/l	# 46
36) 1,1-Dichloropropene	7.951	75	18877	4.99	ug/l	# 47
38) Carbon Tetrachloride	7.945	117	21772	5.73	ug/l	# 13
51) 4-Methyl-2-Pentanone	10.213	43	1998	1.35	ug/l	91
68) m/p-Xylenes	11.835	106	5634	1.15	ug/l	93
76) 1,2,3-Trichloropropane	12.621	75	87037	62.79	ug/l	# 1
81) trans-1,4-Dichloro-2-b...	12.621	75	87037	127.21	ug/l	# 11

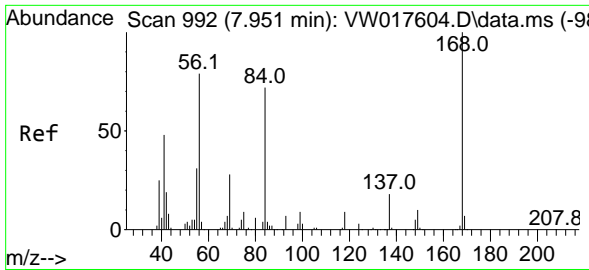
(#) = qualifier out of range (m) = manual integration (+) = signals summed

Data Path : Z:\voasrv\HPCHEM1\MSVOA_W\Data\VW121620\
 Data File : VW017659.D
 Acq On : 16 Dec 2020 13:31
 Operator : SY/VA
 Sample : L5009-05
 Misc : 5.02G/5ML/MSVOA_W/SOIL
 ALS Vial : 11 Sample Multiplier: 1

Instrument :
 MSVOA_W
 ClientSampled :

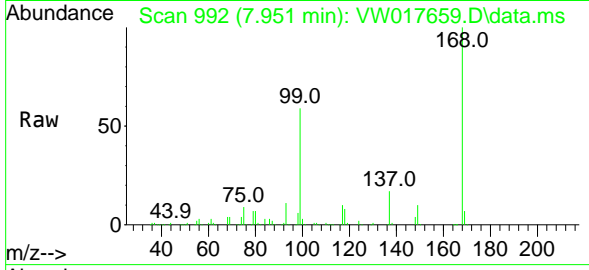
Quant Time: Dec 17 05:07:37 2020
 Quant Method : Z:\voasrv\HPCHEM1\MSVOA_W\Method\82W121420S.M
 Quant Title : SW846 8260
 QLast Update : Mon Dec 14 12:39:23 2020
 Response via : Initial Calibration



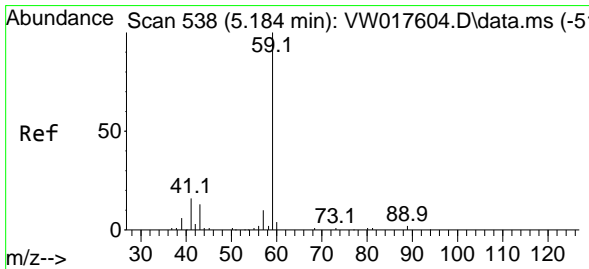
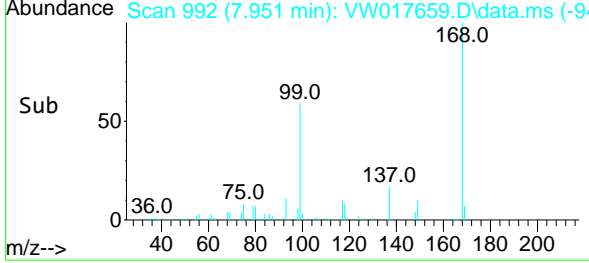
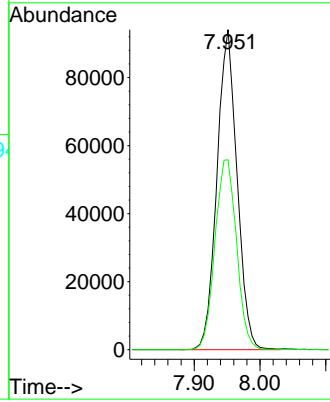


#1
 Pentafluorobenzene
 Concen: 50.00 ug/l
 RT: 7.951 min Scan# 992
 Delta R.T. 0.000 min
 Lab File: VW017659.D
 Acq: 16 Dec 2020 13:31

Instrument :
 MSVOA_W
 ClientSampled :

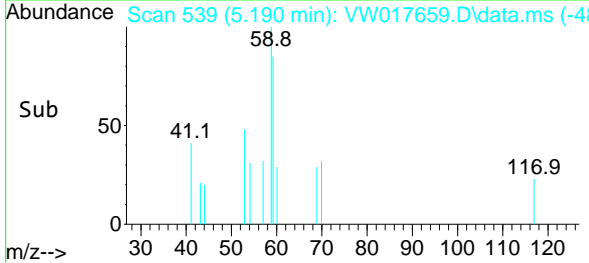
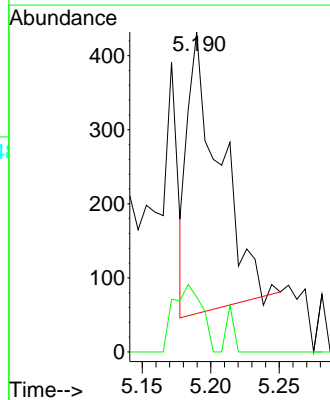
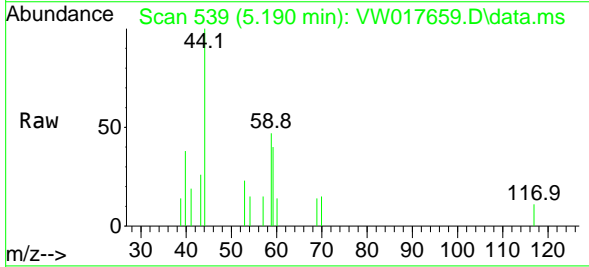


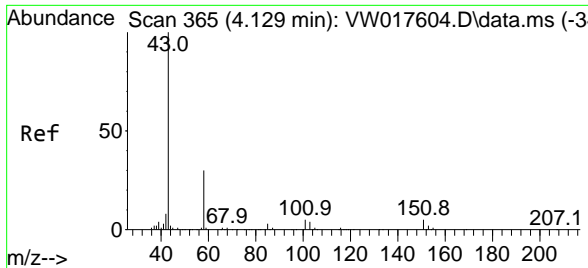
Tgt Ion:168 Resp: 200170
 Ion Ratio Lower Upper
 168 100
 99 59.4 40.7 61.1



#11
 Tert butyl alcohol
 Concen: Below Cal
 RT: 5.190 min Scan# 539
 Delta R.T. 0.006 min
 Lab File: VW017659.D
 Acq: 16 Dec 2020 13:31

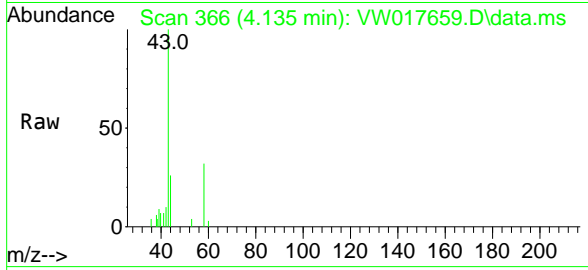
Tgt Ion: 59 Resp: 619
 Ion Ratio Lower Upper
 59 100
 57 21.3 4.7 7.1#



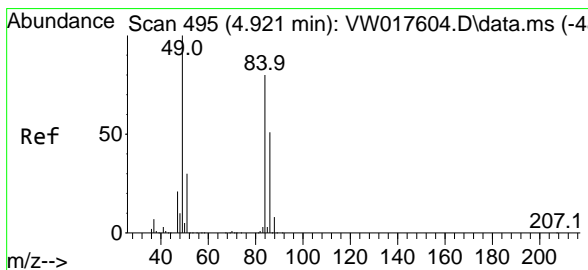
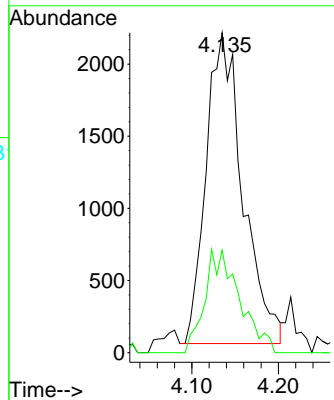
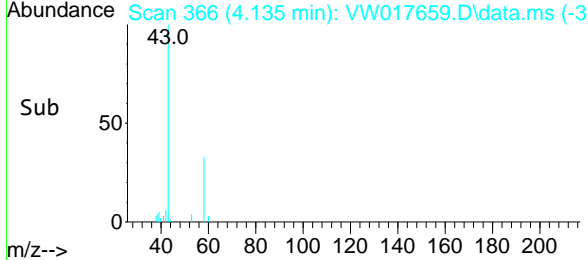


#16
 Acetone
 Concen: 11.94 ug/l
 RT: 4.135 min Scan# 366
 Delta R.T. 0.006 min
 Lab File: VW017659.D
 Acq: 16 Dec 2020 13:31

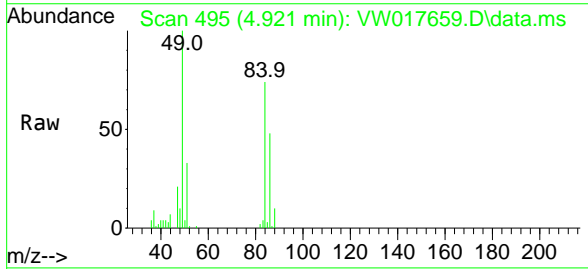
Instrument :
 MSVOA_W
 ClientSampled :



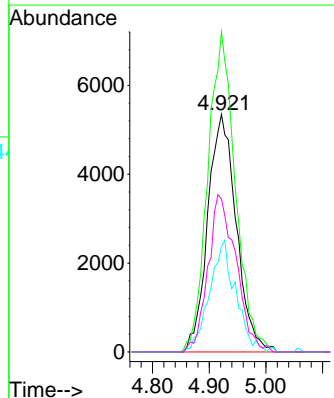
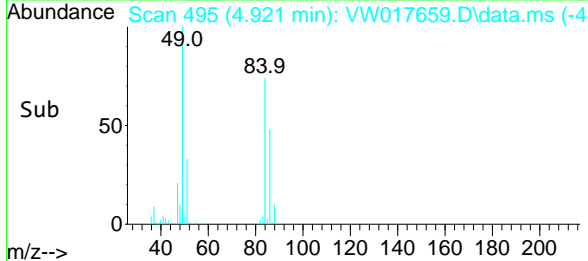
Tgt Ion: 43 Resp: 6333
 Ion Ratio Lower Upper
 43 100
 58 32.9 25.7 38.5

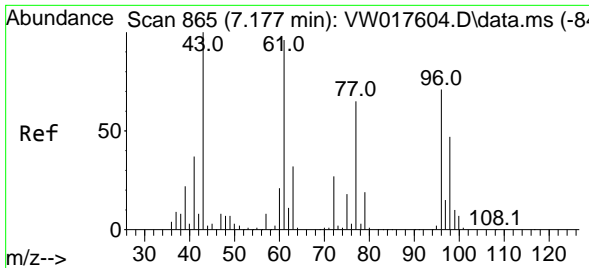


#20
 Methylene Chloride
 Concen: 2.98 ug/l
 RT: 4.921 min Scan# 495
 Delta R.T. 0.000 min
 Lab File: VW017659.D
 Acq: 16 Dec 2020 13:31



Tgt Ion: 84 Resp: 18708
 Ion Ratio Lower Upper
 84 100
 49 134.7 79.0 118.6#
 51 44.4 26.1 39.1#
 86 64.3 50.1 75.1

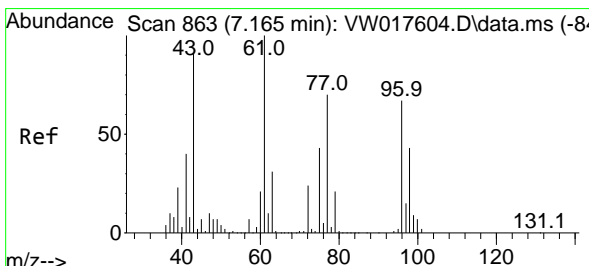
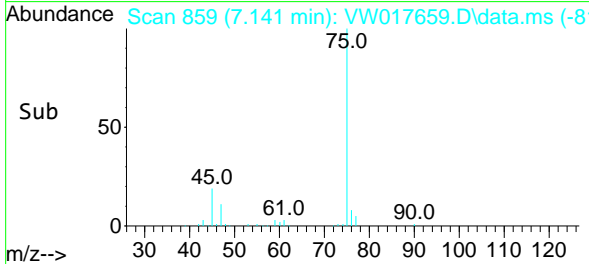
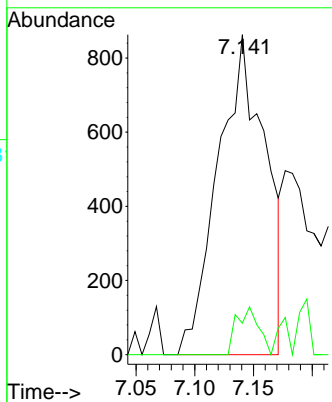
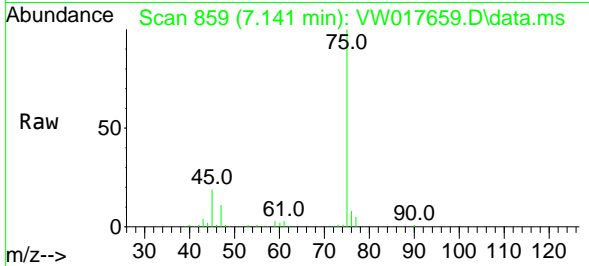




#25
 2-Butanone
 Concen: 3.42 ug/l
 RT: 7.141 min Scan# 859
 Delta R.T. -0.036 min
 Lab File: VW017659.D
 Acq: 16 Dec 2020 13:31

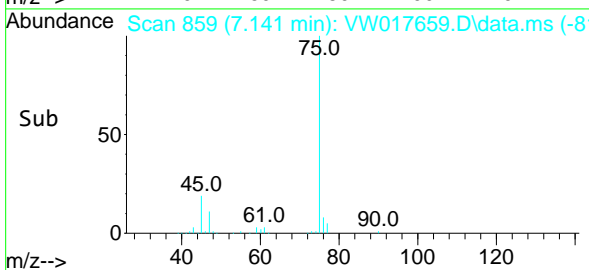
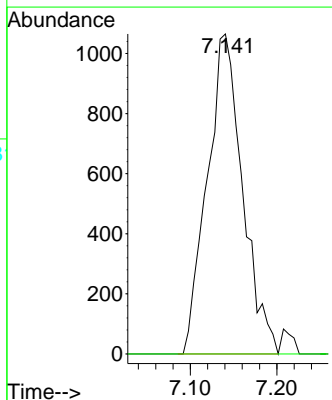
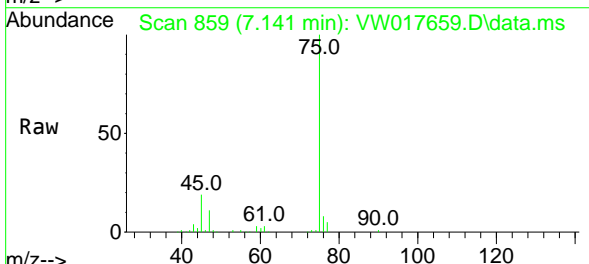
Instrument :
 MSVOA_W
 ClientSampled :

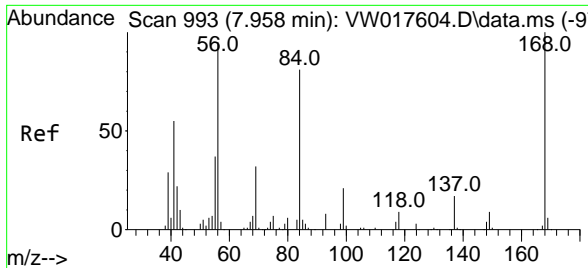
Tgt Ion: 43 Resp: 2413
 Ion Ratio Lower Upper
 43 100
 72 9.8 25.4 38.2#



#26
 2,2-Dichloropropane
 Concen: Below Cal
 RT: 7.141 min Scan# 859
 Delta R.T. -0.024 min
 Lab File: VW017659.D
 Acq: 16 Dec 2020 13:31

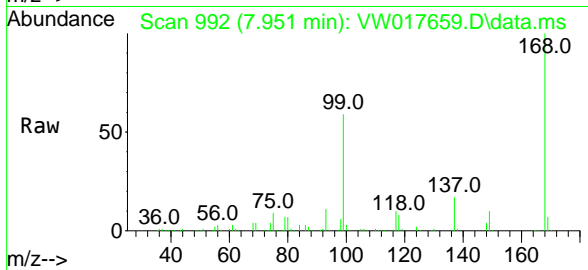
Tgt Ion: 77 Resp: 3021
 Ion Ratio Lower Upper
 77 100
 97 0.0 12.4 37.4#



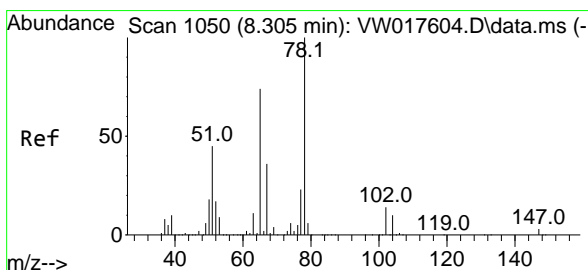
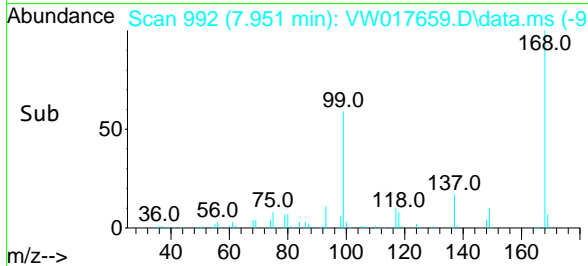
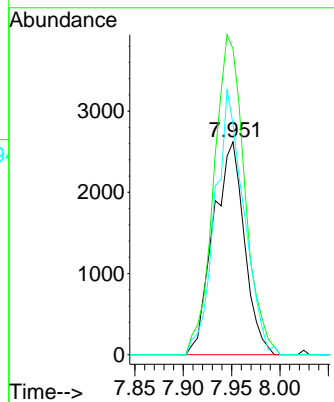


#31
 Cyclohexane
 Concen: 1.39 ug/l
 RT: 7.951 min Scan# 992
 Delta R.T. -0.007 min
 Lab File: VW017659.D
 Acq: 16 Dec 2020 13:31

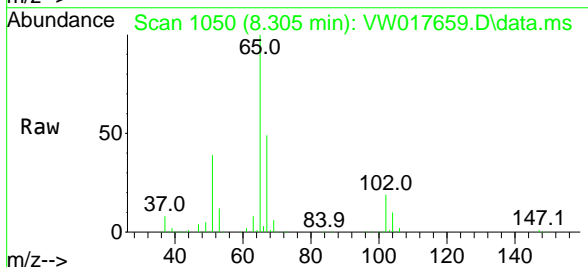
Instrument :
 MSVOA_W
 ClientSampled :



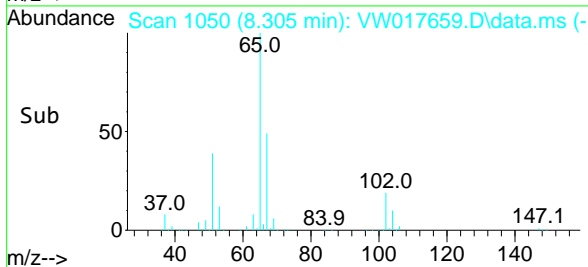
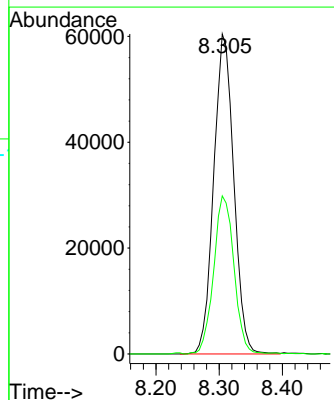
Tgt Ion: 56 Resp: 5847
 Ion Ratio Lower Upper
 56 100
 69 143.7 29.3 43.9#
 84 108.4 80.5 120.7

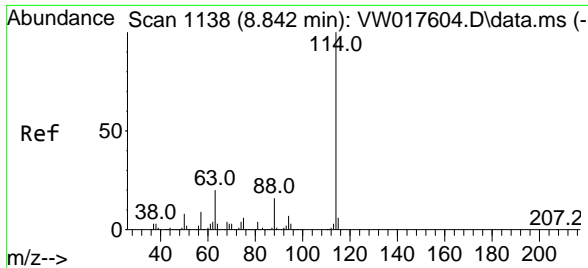


#33
 1,2-Dichloroethane-d4
 Concen: 54.51 ug/l
 RT: 8.305 min Scan# 1050
 Delta R.T. -0.000 min
 Lab File: VW017659.D
 Acq: 16 Dec 2020 13:31



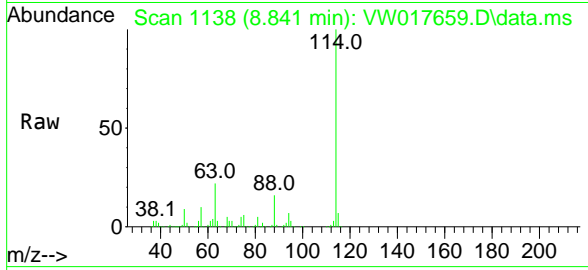
Tgt Ion: 65 Resp: 132913
 Ion Ratio Lower Upper
 65 100
 67 50.0 0.0 103.8





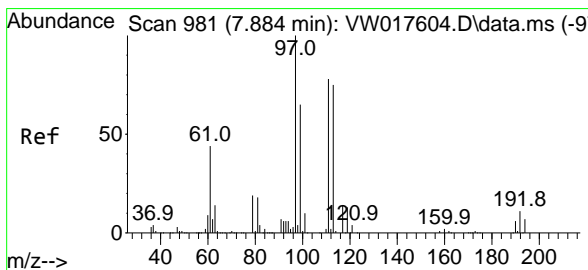
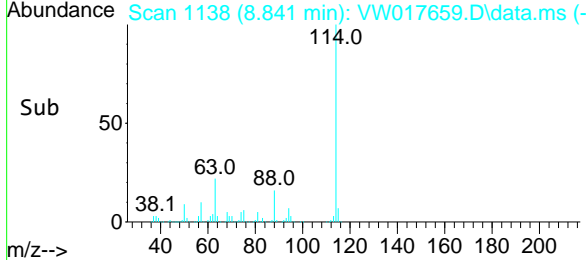
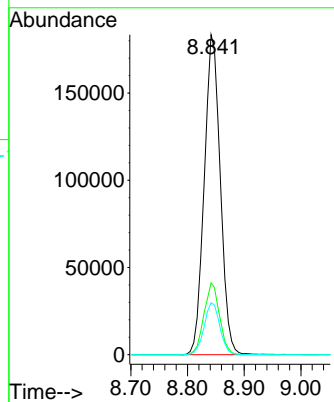
#34
 1,4-Difluorobenzene
 Concen: 50.00 ug/l
 RT: 8.841 min Scan# 1138
 Delta R.T. -0.001 min
 Lab File: VW017659.D
 Acq: 16 Dec 2020 13:31

Instrument :
 MSVOA_W
 ClientSampled :



Tgt Ion:114 Resp: 361035

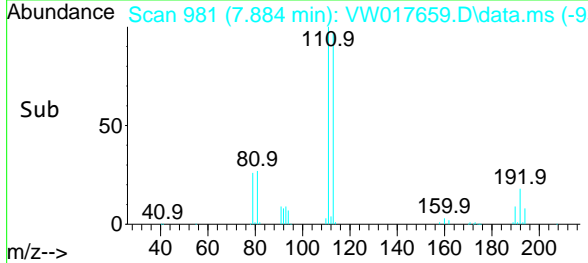
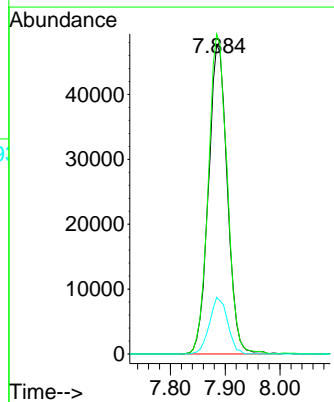
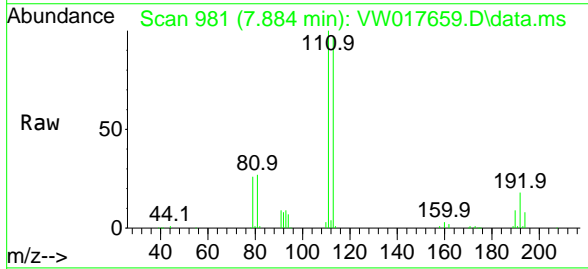
Ion	Ratio	Lower	Upper
114	100		
63	22.5	0.0	35.6
88	16.2	0.0	30.4

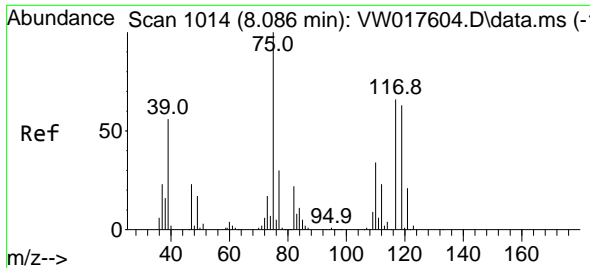


#35
 Dibromofluoromethane
 Concen: 47.53 ug/l
 RT: 7.884 min Scan# 981
 Delta R.T. 0.000 min
 Lab File: VW017659.D
 Acq: 16 Dec 2020 13:31

Tgt Ion:113 Resp: 113551

Ion	Ratio	Lower	Upper
113	100		
111	103.4	81.4	122.2
192	17.6	17.8	26.8#

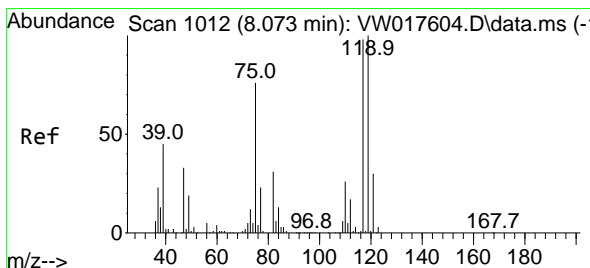
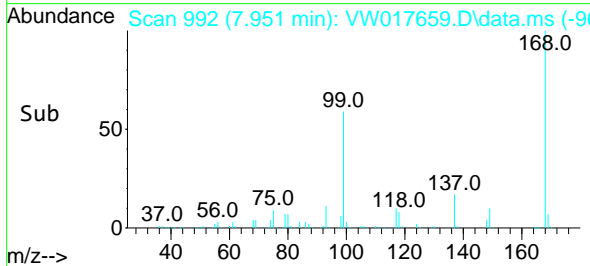
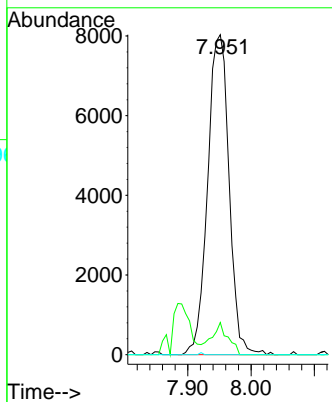
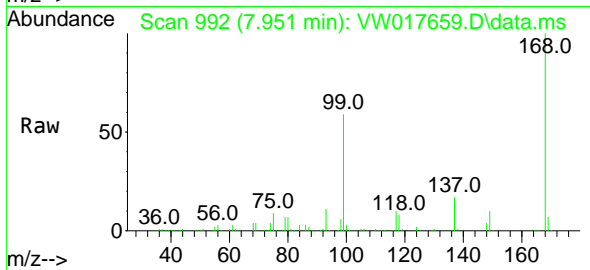




#36
 1,1-Dichloropropene
 Concen: 4.99 ug/l
 RT: 7.951 min Scan# 992
 Delta R.T. -0.135 min
 Lab File: VW017659.D
 Acq: 16 Dec 2020 13:31

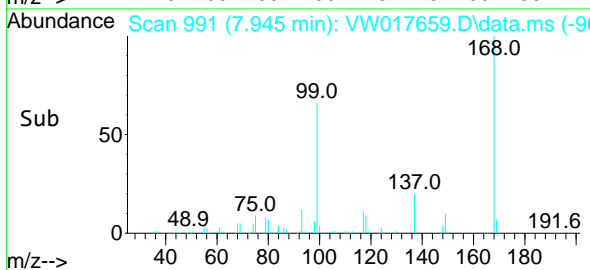
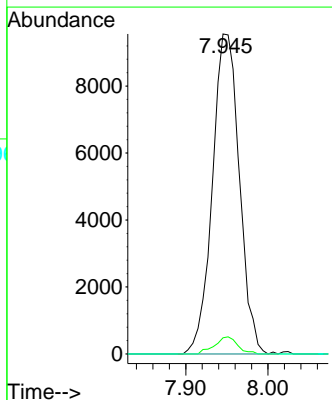
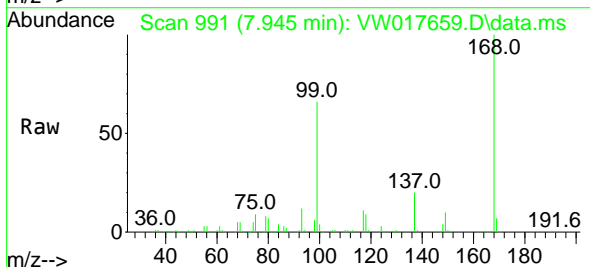
Instrument :
 MSVOA_W
 ClientSampled :

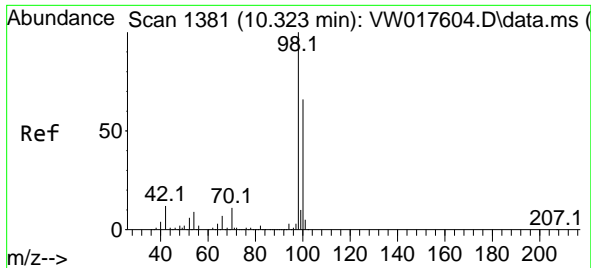
Tgt Ion: 75 Resp: 18877
 Ion Ratio Lower Upper
 75 100
 110 7.8 19.3 57.9#
 77 0.0 25.0 37.6#



#38
 Carbon Tetrachloride
 Concen: 5.73 ug/l
 RT: 7.945 min Scan# 991
 Delta R.T. -0.128 min
 Lab File: VW017659.D
 Acq: 16 Dec 2020 13:31

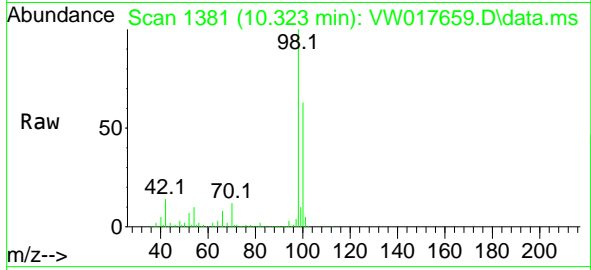
Tgt Ion:117 Resp: 21772
 Ion Ratio Lower Upper
 117 100
 119 5.1 81.6 122.4#
 121 0.0 25.7 38.5#



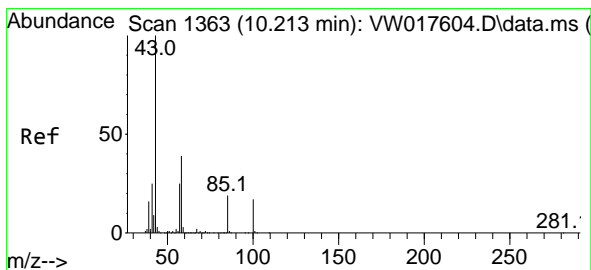
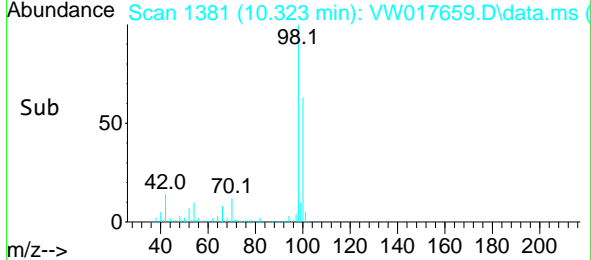
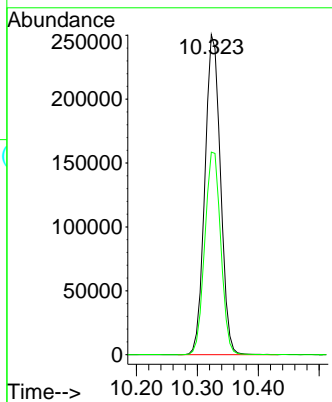


#50
 Toluene-d8
 Concen: 47.94 ug/l
 RT: 10.323 min Scan# 1381
 Delta R.T. -0.000 min
 Lab File: VW017659.D
 Acq: 16 Dec 2020 13:31

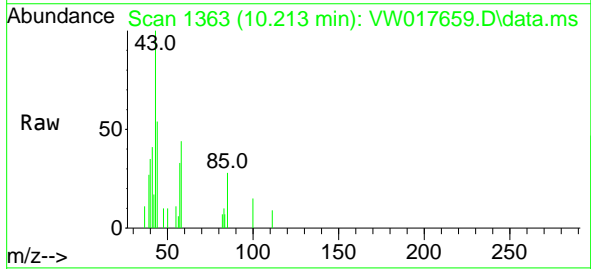
Instrument :
 MSVOA_W
 ClientSampled :



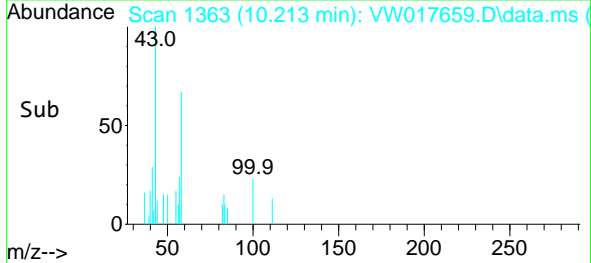
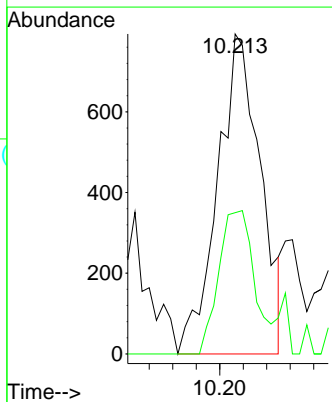
Tgt Ion: 98 Resp: 445912
 Ion Ratio Lower Upper
 98 100
 100 64.8 53.3 79.9

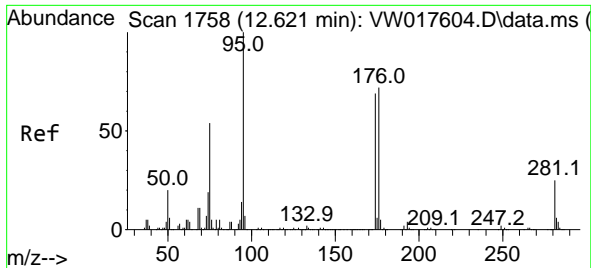


#51
 4-Methyl-2-Pentanone
 Concen: 1.35 ug/l
 RT: 10.213 min Scan# 1363
 Delta R.T. 0.000 min
 Lab File: VW017659.D
 Acq: 16 Dec 2020 13:31



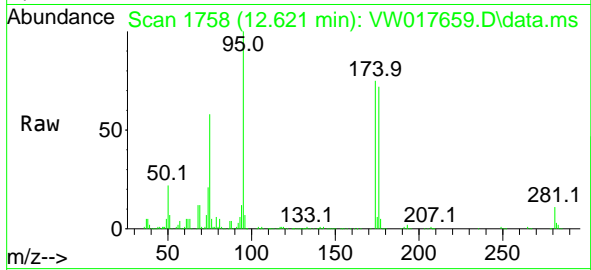
Tgt Ion: 43 Resp: 1998
 Ion Ratio Lower Upper
 43 100
 58 37.4 34.7 52.1



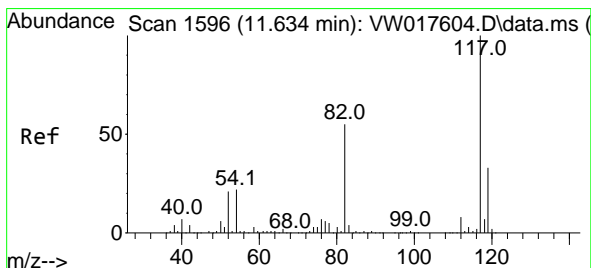
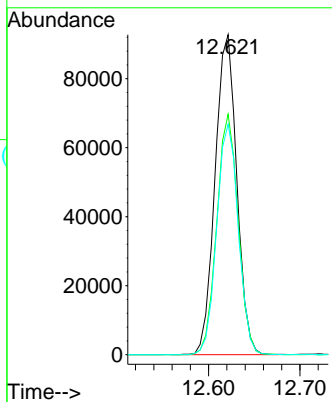
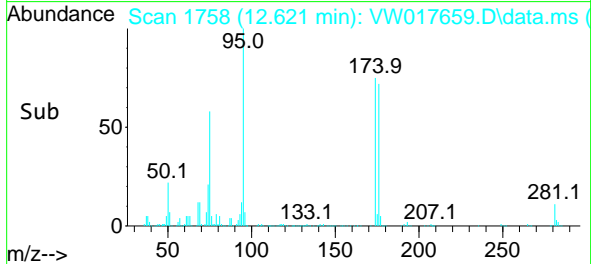


#62
 4-Bromofluorobenzene
 Concen: 46.15 ug/l
 RT: 12.621 min Scan# 1758
 Delta R.T. 0.000 min
 Lab File: VW017659.D
 Acq: 16 Dec 2020 13:31

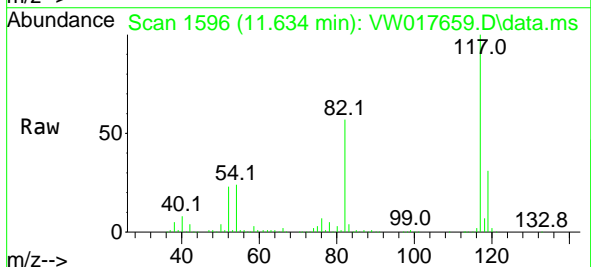
Instrument :
 MSVOA_W
 ClientSampled :



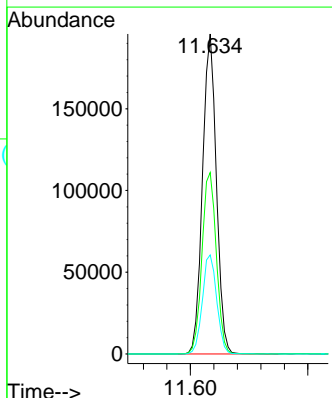
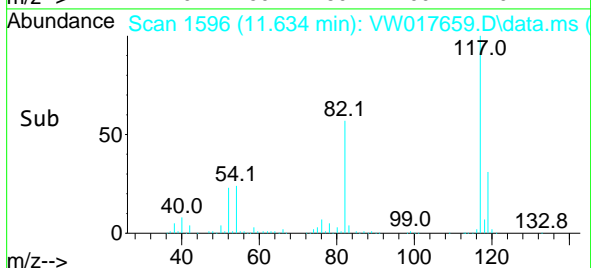
Tgt Ion: 95 Resp: 153265
 Ion Ratio Lower Upper
 95 100
 174 73.9 0.0 180.6
 176 71.3 0.0 177.6

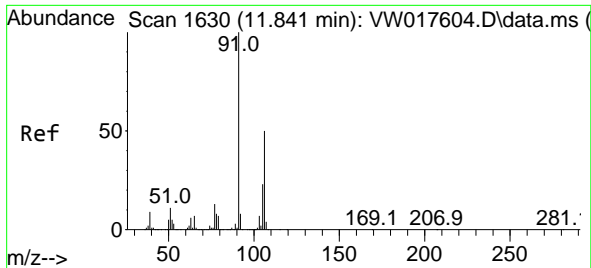


#63
 Chlorobenzene-d5
 Concen: 50.00 ug/l
 RT: 11.634 min Scan# 1596
 Delta R.T. -0.000 min
 Lab File: VW017659.D
 Acq: 16 Dec 2020 13:31



Tgt Ion: 117 Resp: 320776
 Ion Ratio Lower Upper
 117 100
 82 56.7 40.7 61.1
 119 30.9 25.0 37.4

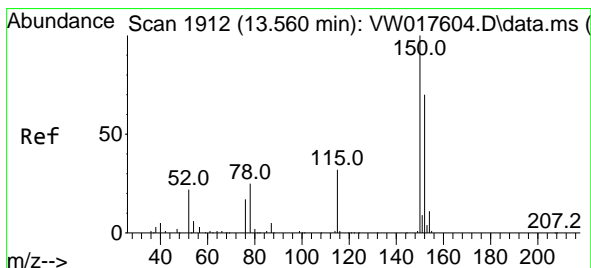
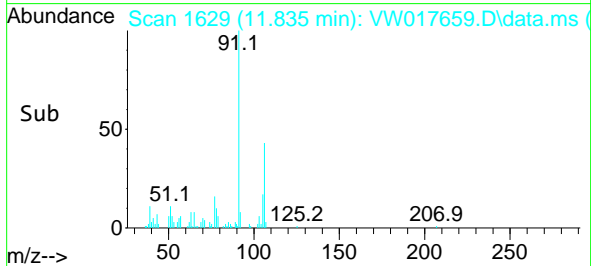
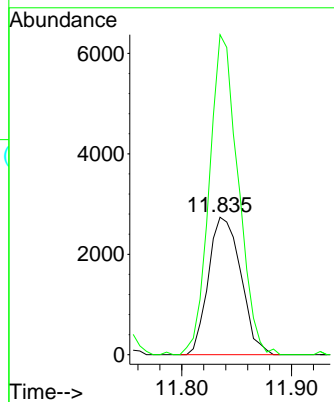
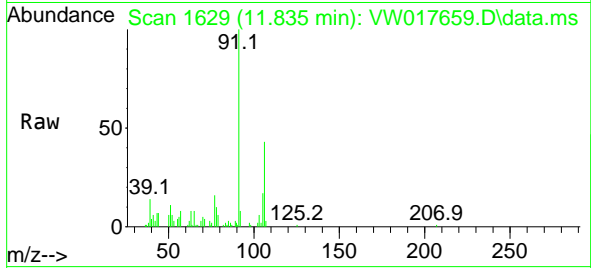




#68
 m/p-Xylenes
 Concen: 1.15 ug/l
 RT: 11.835 min Scan# 1629
 Delta R.T. -0.006 min
 Lab File: VW017659.D
 Acq: 16 Dec 2020 13:31

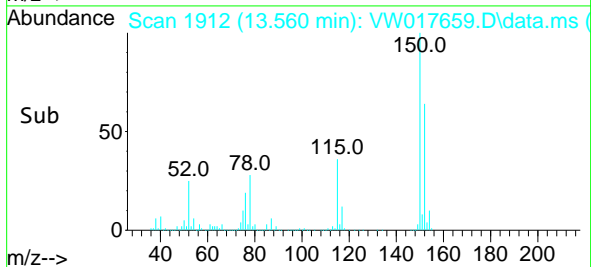
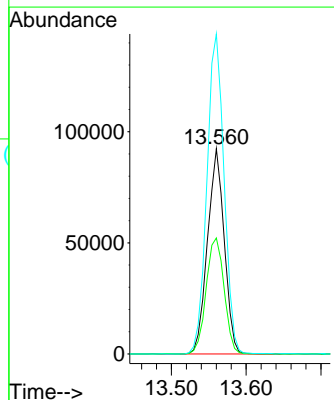
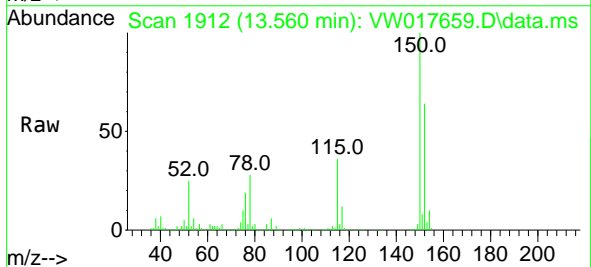
Instrument :
 MSVOA_W
 ClientSampled :

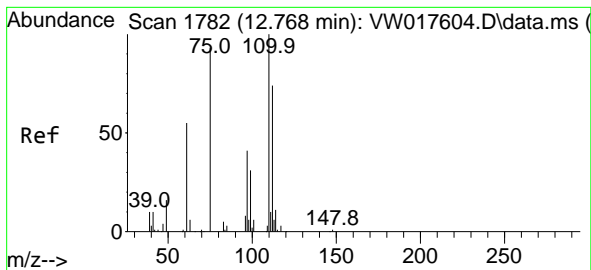
Tgt Ion:106 Resp: 5634
 Ion Ratio Lower Upper
 106 100
 91 207.1 157.4 236.0



#72
 1,4-Dichlorobenzene-d4
 Concen: 50.00 ug/l
 RT: 13.560 min Scan# 1912
 Delta R.T. 0.000 min
 Lab File: VW017659.D
 Acq: 16 Dec 2020 13:31

Tgt Ion:152 Resp: 144007
 Ion Ratio Lower Upper
 152 100
 115 60.4 27.9 83.7
 150 159.4 0.0 344.0

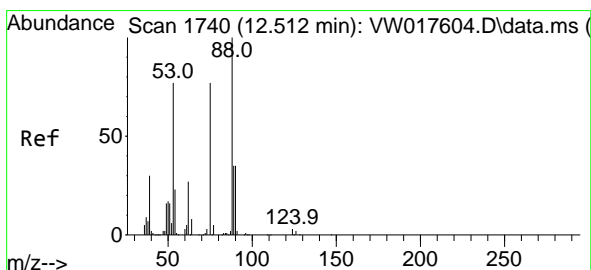
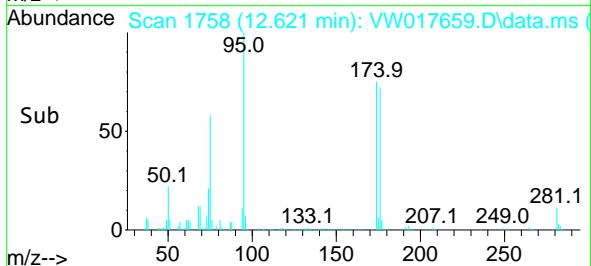
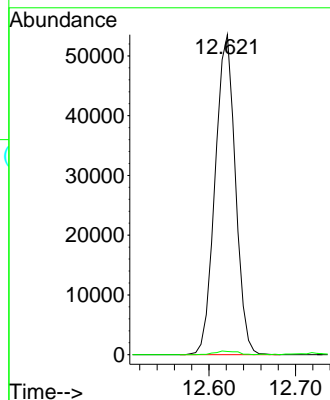
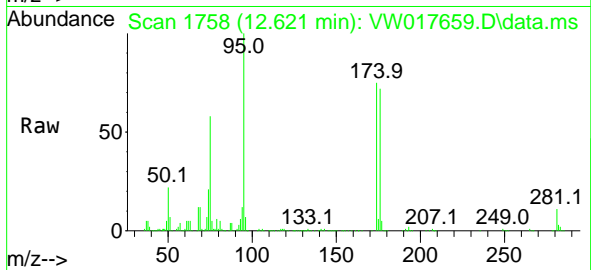




#76
 1,2,3-Trichloropropane
 Concen: 62.79 ug/l
 RT: 12.621 min Scan# 1758
 Delta R.T. -0.147 min
 Lab File: VW017659.D
 Acq: 16 Dec 2020 13:31

Instrument :
 MSVOA_W
 ClientSampled :

Tgt Ion: 75 Resp: 87037
 Ion Ratio Lower Upper
 75 100
 77 1.3 178.8 536.3#



#81
 trans-1,4-Dichloro-2-butene
 Concen: 127.21 ug/l
 RT: 12.621 min Scan# 1758
 Delta R.T. 0.109 min
 Lab File: VW017659.D
 Acq: 16 Dec 2020 13:31

Tgt Ion: 75 Resp: 87037
 Ion Ratio Lower Upper
 75 100
 53 0.0 77.0 115.4#
 89 0.1 38.7 58.1#

