

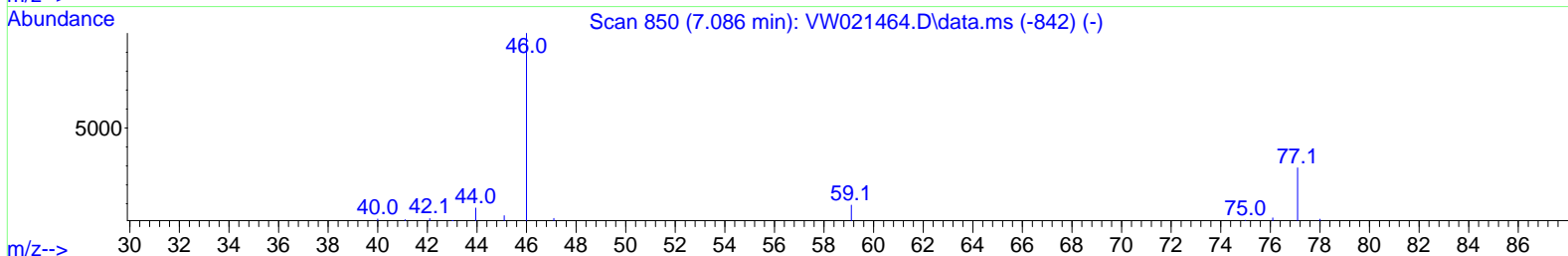
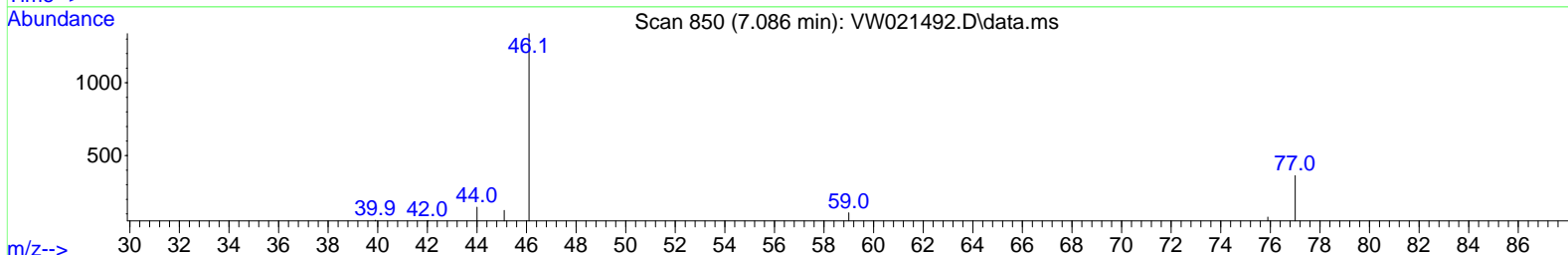
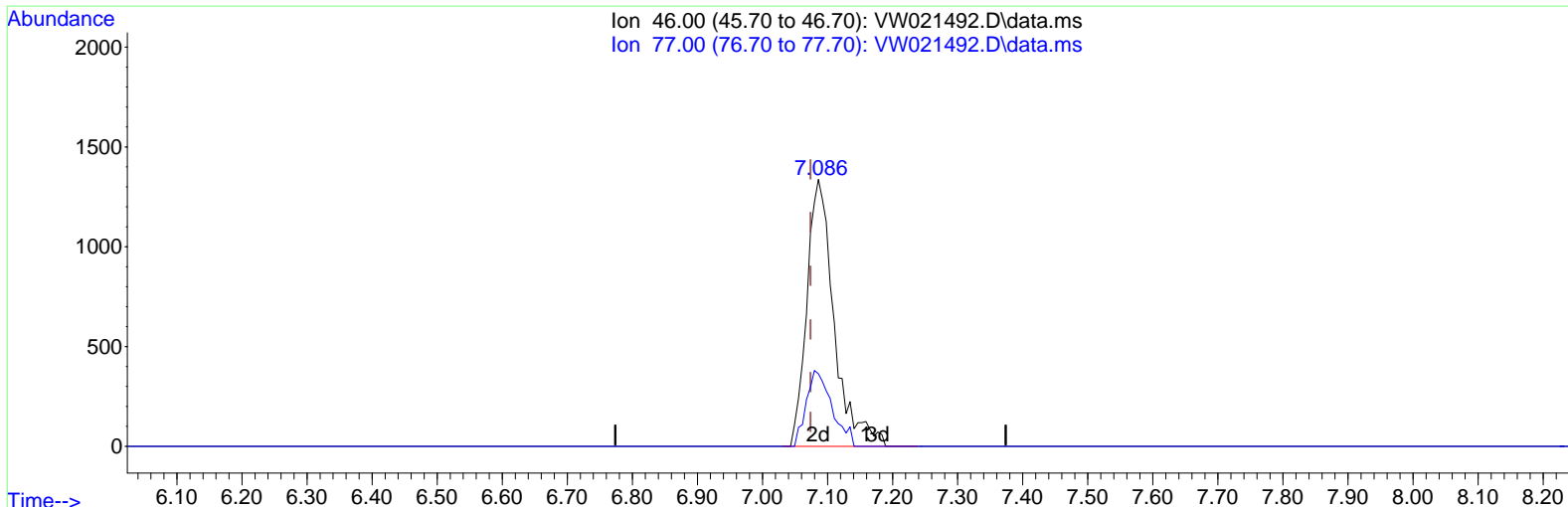
Data Path : Z:\voasrv\HPCHEM1\MSVOA_W\Data\VW122021\
 Data File : VW021492.D
 Acq On : 20 Dec 2021 12:49
 Operator : SY/VA
 Sample : M5171-12
 Misc : 6.51g/10.0mL/MSVOA_W/SOIL
 ALS Vial : 2 Sample Multiplier: 1

Instrument :
 MSVOA_W
ClientSampleId :
 BGLA8

Manual Integrations APPROVED

Reviewed By : Semsettin Yesilyurt 12/20/2021
 Supervised By : Amit Patel 12/24/2021

Quant Time: Dec 20 16:36:39 2021
 Quant Method : Z:\voasrv\HPCHEM1\MSVOA_W\Method\SFAMWLM120921SMA.M
 Quant Title : SFAM01.0
 QLast Update : Sat Dec 18 00:55:20 2021
 Response via : Initial Calibration



TIC: VW021492.D\data.ms

(21) 2-Butanone-d5 (S)

7.086min (+ 0.012) 10.55 ug/L m

response 3897

Ion	Exp%	Act%
46.00	100.00	100.00
77.00	20.20	0.92#
0.00	0.00	0.00
0.00	0.00	0.00

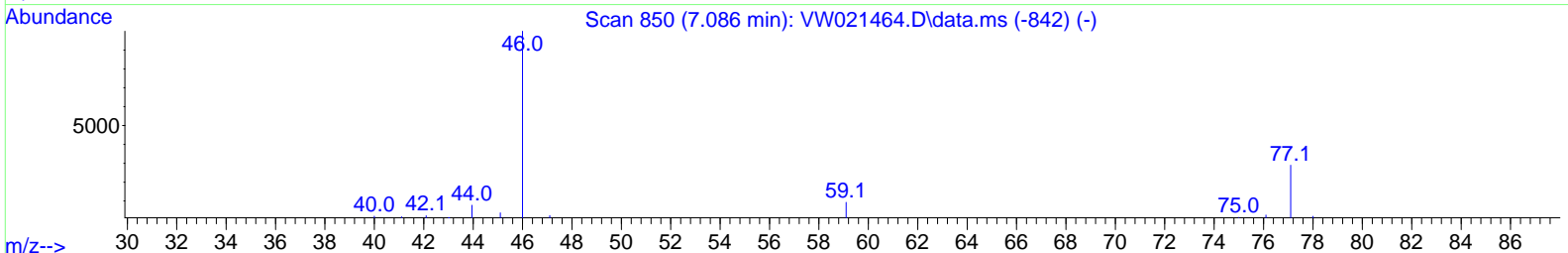
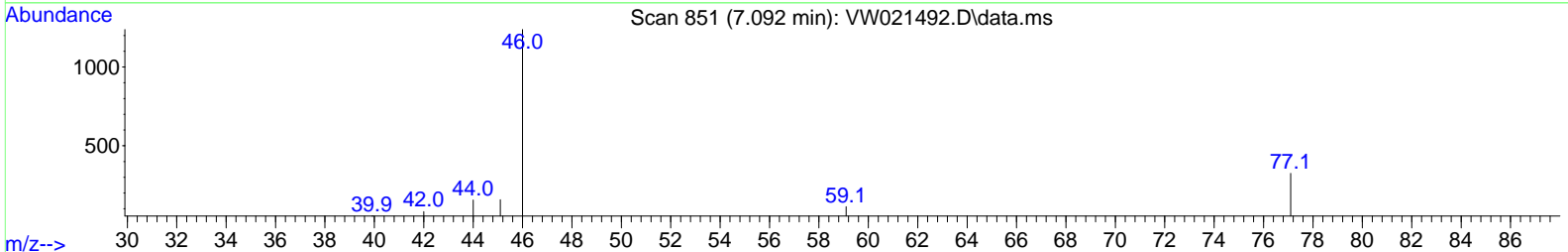
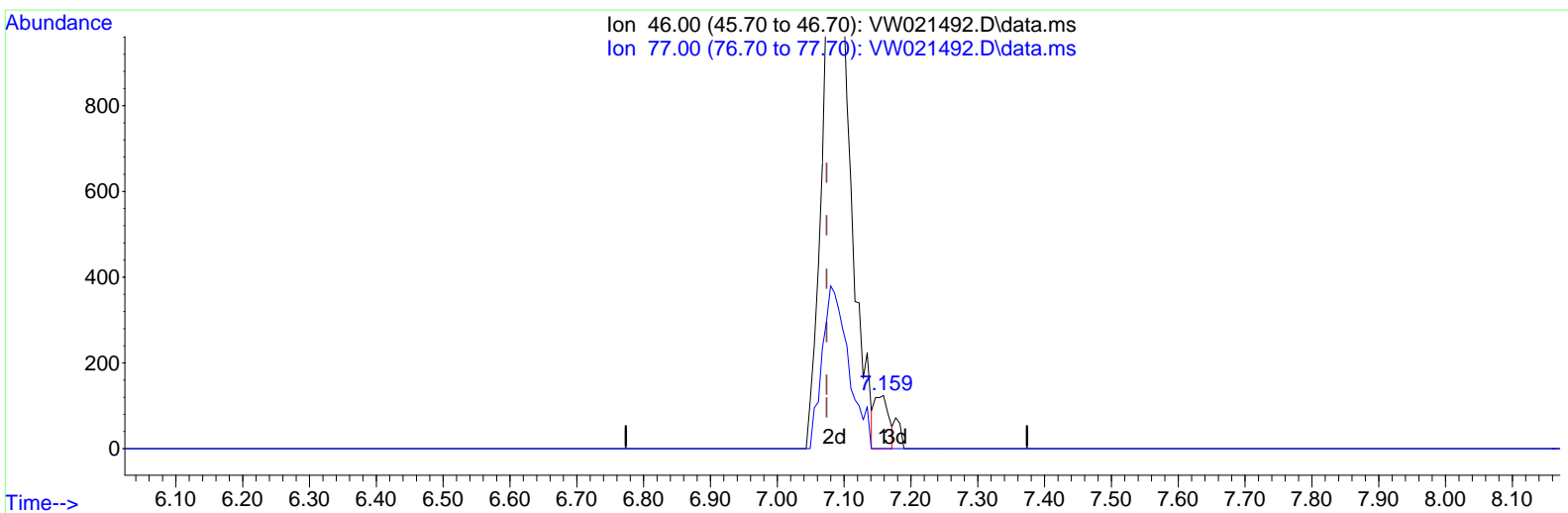
Data Path : Z:\voasrv\HPCHEM1\MSVOA_W\Data\VW122021\
 Data File : VW021492.D
 Acq On : 20 Dec 2021 12:49
 Operator : SY/VA
 Sample : M5171-12
 Misc : 6.51g/10.0mL/MSVOA_W/SOIL
 ALS Vial : 2 Sample Multiplier: 1

Instrument :
 MSVOA_W
ClientSampleId :
 BGLA8

Manual Integrations APPROVED

Reviewed By : Semsettin Yesilyurt 12/20/2021
 Supervised By : Amit Patel 12/24/2021

Quant Time: Dec 20 16:36:39 2021
 Quant Method : Z:\voasrv\HPCHEM1\MSVOA_W\Method\SFAMWLM120921SMA.M
 Quant Title : SFAM01.0
 QLast Update : Sat Dec 18 00:55:20 2021
 Response via : Initial Calibration



TIC: VW021492.D\data.ms

(21) 2-Butanone-d5 (S)

7.159min (+ 0.085) 0.49 ug/L

response 182

Ion	Exp%	Act%
46.00	100.00	100.00
77.00	20.20	19.78
0.00	0.00	0.00
0.00	0.00	0.00

Data Path : Z:\voasrv\HPCHEM1\MSVOA_W\Data\VW122021\
 Data File : VW021492.D
 Acq On : 20 Dec 2021 12:49
 Operator : SY/VA
 Sample : M5171-12
 Misc : 6.51g/10.0mL/MSVOA_W/SOIL
 ALS Vial : 2 Sample Multiplier: 1

Instrument :
 MSVOA_W
ClientSampleId :
 BGLA8

Manual IntegrationsAPPROVED

Reviewed By :Semsettin Yesilyurt 12/20/2021
 Supervised By :Amit Patel 12/24/2021

Quant Time: Dec 20 16:36:39 2021
 Quant Method : Z:\voasrv\HPCHEM1\MSVOA_W\Method\SFAMWLM120921SMA.M
 Quant Title : SFAM01.0
 QLast Update : Sat Dec 18 00:55:20 2021
 Response via : Initial Calibration

Compound	R.T.	QIon	Response	Conc	Units	Dev(Min)
Internal Standards						
1) 1,4-Difluorobenzene	8.842	114	143898	25.000	ug/L	# 0.00
28) Chlorobenzene-d5	11.634	117	123573	25.000	ug/L	0.00
58) 1,4-Dichlorobenzene-d4	13.554	152	47386	25.000	ug/L	0.00
System Monitoring Compounds						
4) Vinyl Chloride-d3	2.349	65	38054	14.520	ug/L	0.00
Spiked Amount	25.000	Range 30 - 150	Recovery =	58.080%		
7) Chloroethane-d5	2.879	69	27647	15.958	ug/L	0.00
Spiked Amount	25.000	Range 30 - 150	Recovery =	63.840%		
11) 1,1-Dichloroethene-d2	4.013	63	49097	14.052	ug/L	0.00
Spiked Amount	25.000	Range 45 - 110	Recovery =	56.200%		
21) 2-Butanone-d5	7.086	46	3897m	10.549	ug/L	0.01
Spiked Amount	50.000	Range 20 - 135	Recovery =	21.100%		
24) Chloroform-d	7.647	84	91184	22.738	ug/L	0.00
Spiked Amount	25.000	Range 40 - 150	Recovery =	90.960%		
26) 1,2-Dichloroethane-d4	8.305	65	52449	24.588	ug/L	0.00
Spiked Amount	25.000	Range 70 - 130	Recovery =	98.360%		
32) Benzene-d6	8.275	84	171598	25.334	ug/L	0.00
Spiked Amount	25.000	Range 20 - 135	Recovery =	101.320%		
36) 1,2-Dichloropropane-d6	9.274	67	49798	27.413	ug/L	0.00
Spiked Amount	25.000	Range 70 - 120	Recovery =	109.640%		
41) Toluene-d8	10.323	98	156897	22.671	ug/L	0.00
Spiked Amount	25.000	Range 30 - 130	Recovery =	90.680%		
43) trans-1,3-Dichloroprop...	10.579	79	12238	14.631	ug/L	0.00
Spiked Amount	25.000	Range 30 - 135	Recovery =	58.520%		
47) 2-Hexanone-d5	10.927	63	2976	11.079	ug/L	0.00
Spiked Amount	50.000	Range 20 - 135	Recovery =	22.160%		
56) 1,1,2,2-Tetrachloroeth...	12.695	84	32779	20.991	ug/L	0.00
Spiked Amount	25.000	Range 45 - 120	Recovery =	83.960%		
66) 1,2-Dichlorobenzene-d4	13.853	152	39135	21.310	ug/L	0.00
Spiked Amount	25.000	Range 75 - 120	Recovery =	85.240%		
Target Compounds						
15) Methyl Acetate	4.678	43	971	1.699	ug/L	# 73
46) Tetrachloroethene	10.860	164	10084	5.617	ug/L	96

(#) = qualifier out of range (m) = manual integration (+) = signals summed

Data Path : Z:\voasrv\HPCHEM1\MSVOA_W\Data\VW122021\
 Data File : VW021492.D
 Acq On : 20 Dec 2021 12:49
 Operator : SY/VA
 Sample : M5171-12
 Misc : 6.51g/10.0mL/MSVOA_W/SOIL
 ALS Vial : 2 Sample Multiplier: 1

Instrument :
 MSVOA_W
ClientSampleId :
 BGLA8

Manual IntegrationsAPPROVED

Reviewed By :Semsettin Yesilyurt 12/20/2021
 Supervised By :Amit Patel 12/24/2021

Quant Time: Dec 20 16:36:39 2021
 Quant Method : Z:\voasrv\HPCHEM1\MSVOA_W\Method\SFAMWLM120921SMA.M
 Quant Title : SFAM01.0
 QLast Update : Sat Dec 18 00:55:20 2021
 Response via : Initial Calibration

