

Data Path : Z:\voasrv\HPCHEM1\MSVOA_W\Data\VW122021\
 Data File : VW021506.D
 Acq On : 20 Dec 2021 18:24
 Operator : SY/VA
 Sample : VIBLK
 Misc : 5.00g/10.0mL/MSVOA_W/SOIL
 ALS Vial : 19 Sample Multiplier: 1

Instrument :
 MSVOA_W
ClientSampleId :
 VIBLK555

Quant Time: Dec 20 21:31:52 2021
 Quant Method : Z:\voasrv\HPCHEM1\MSVOA_W\Method\SFAMWLM120921SMA.M
 Quant Title : SFAM01.0
 QLast Update : Sat Dec 18 00:55:20 2021
 Response via : Initial Calibration

Compound	R.T.	QIon	Response	Conc	Units	Dev(Min)

Internal Standards						
1) 1,4-Difluorobenzene	8.842	114	172588	25.000	ug/L	# 0.00
28) Chlorobenzene-d5	11.634	117	168793	25.000	ug/L	0.00
58) 1,4-Dichlorobenzene-d4	13.560	152	94992	25.000	ug/L	0.00
System Monitoring Compounds						
4) Vinyl Chloride-d3	2.349	65	45829	14.580	ug/L	0.00
Spiked Amount	25.000	Range 30 - 150	Recovery =	58.320%		
7) Chloroethane-d5	2.886	69	30133	14.501	ug/L	0.00
Spiked Amount	25.000	Range 30 - 150	Recovery =	58.000%		
11) 1,1-Dichloroethene-d2	4.013	63	70451	16.812	ug/L	0.00
Spiked Amount	25.000	Range 45 - 110	Recovery =	67.240%		
21) 2-Butanone-d5	7.092	46	22639	51.095	ug/L	0.02
Spiked Amount	50.000	Range 20 - 135	Recovery =	102.180%		
24) Chloroform-d	7.647	84	107873	22.428	ug/L	0.00
Spiked Amount	25.000	Range 40 - 150	Recovery =	89.720%		
26) 1,2-Dichloroethane-d4	8.305	65	57338	22.412	ug/L	0.00
Spiked Amount	25.000	Range 70 - 130	Recovery =	89.640%		
32) Benzene-d6	8.275	84	225186	24.339	ug/L	0.00
Spiked Amount	25.000	Range 20 - 135	Recovery =	97.360%		
36) 1,2-Dichloropropane-d6	9.275	67	62059	25.011	ug/L	0.00
Spiked Amount	25.000	Range 70 - 120	Recovery =	100.040%		
41) Toluene-d8	10.323	98	222436	23.530	ug/L	0.00
Spiked Amount	25.000	Range 30 - 130	Recovery =	94.120%		
43) trans-1,3-Dichloroprop...	10.579	79	26168	22.904	ug/L	0.00
Spiked Amount	25.000	Range 30 - 135	Recovery =	91.600%		
47) 2-Hexanone-d5	10.927	63	19997	54.500	ug/L	0.00
Spiked Amount	50.000	Range 20 - 135	Recovery =	109.000%		
56) 1,1,2,2-Tetrachloroeth...	12.695	84	47837	22.427	ug/L	0.00
Spiked Amount	25.000	Range 45 - 120	Recovery =	89.720%		
66) 1,2-Dichlorobenzene-d4	13.853	152	88891	24.146	ug/L	0.00
Spiked Amount	25.000	Range 75 - 120	Recovery =	96.600%		

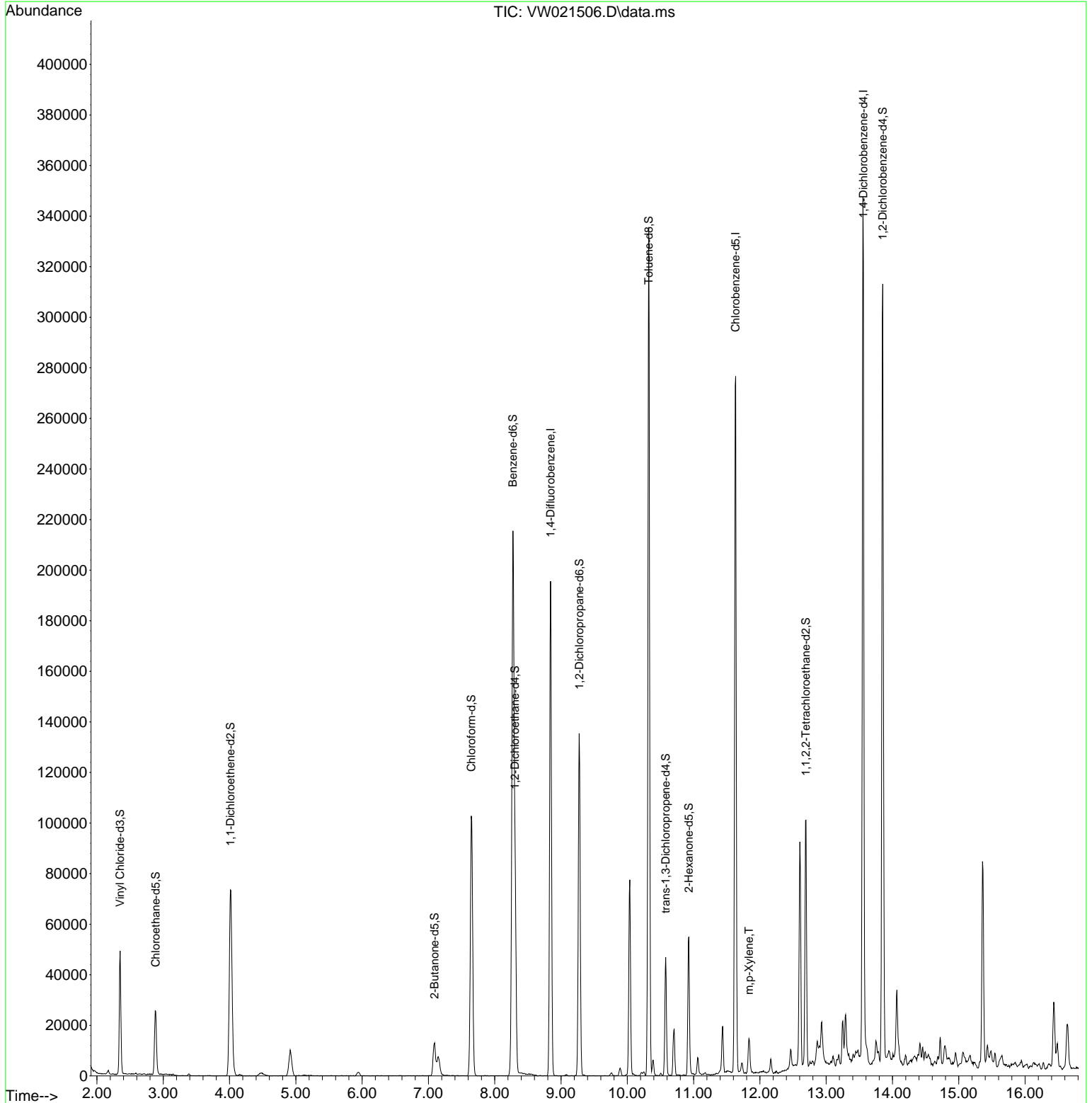
Target Compounds						Qvalue
53) m,p-Xylene	11.835	106	4694	0.947	ug/L	78

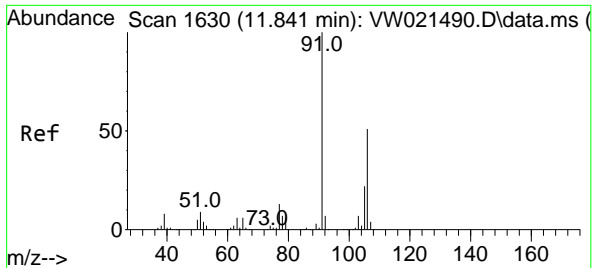
(#) = qualifier out of range (m) = manual integration (+) = signals summed

Data Path : Z:\voasrv\HPCHEM1\MSVOA_W\Data\VW122021\
 Data File : VW021506.D
 Acq On : 20 Dec 2021 18:24
 Operator : SY/VA
 Sample : VIBLK
 Misc : 5.00g/10.0mL/MSVOA_W/SOIL
 ALS Vial : 19 Sample Multiplier: 1

Instrument :
 MSVOA_W
 ClientSampleId :
 VIBLK555

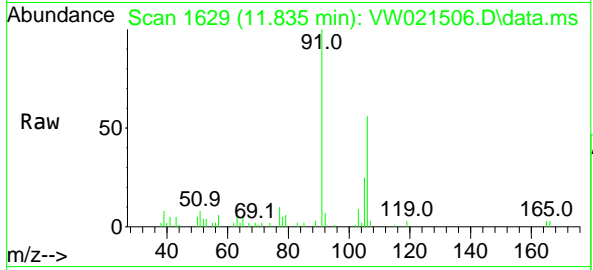
Quant Time: Dec 20 21:31:52 2021
 Quant Method : Z:\voasrv\HPCHEM1\MSVOA_W\Method\SFAMWLM120921SMA.M
 Quant Title : SFAM01.0
 QLast Update : Sat Dec 18 00:55:20 2021
 Response via : Initial Calibration





#53
 m,p-Xylene
 Concen: 0.947 ug/L
 RT: 11.835 min Scan# 1
 Delta R.T. 0.000 min
 Lab File: VW021506.D
 Acq: 20 Dec 2021 18:24

Instrument :
 MSVOA_W
 ClientSampleId :
 VIBLK555



Tgt Ion:106 Resp: 4694
 Ion Ratio Lower Upper
 106 100
 91 179.0 149.9 278.3

