

Data Path : Z:\voasrv\HPCHEM1\MSVOA_W\Data\VW122021\
 Data File : VW021502.D
 Acq On : 20 Dec 2021 16:48
 Operator : SY/VA
 Sample : M5171-13
 Misc : 6.35g/10.0mL/MSVOA_W/SOIL
 ALS Vial : 15 Sample Multiplier: 1

Instrument :
 MSVOA_W
 ClientSampleId :
 BGLA9

Integration Parameters: LSCINT.P
 Integrator: RTE
 Smoothing : OFF
 Sampling : 1
 Start Thrs: 0.2
 Stop Thrs : 0
 Filtering: 5
 Min Area: 0 % of largest Peak
 Max Peaks: 100
 Peak Location: TOP

If leading or trailing edge < 100 prefer < Baseline drop else tangent >
 Peak separation: 5

Method : Z:\voasrv\HPCHEM1\MSVOA_W\Method\SFAMWLM120921SMA.M
 Title : SFAM01.0

Signal : TIC: VW021502.D\data.ms

peak #	R.T. min	first scan	max scan	last scan	PK TY	peak height	corr. area	corr. % max.	% of total
1	2.160	38	42	49	rVB3	768	1831	0.04%	0.004%
2	2.355	67	74	81	rVB	22527	37689	0.78%	0.081%
3	2.568	107	109	111	rBV2	235	194	0.00%	0.000%
4	2.641	115	121	127	rVB6	843	2186	0.05%	0.005%
5	2.812	144	149	154	rBV	1549	2765	0.06%	0.006%
6	2.885	154	161	170	rVB	17163	33915	0.71%	0.073%
7	3.001	176	180	182	rBV	188	339	0.01%	0.001%
8	3.056	186	189	191	rVV	288	363	0.01%	0.001%
9	3.550	266	270	273	rBV	210	319	0.01%	0.001%
10	4.019	336	347	357	rVV	41579	109175	2.27%	0.236%
11	4.123	357	364	376	rVV	11903	31995	0.67%	0.069%
12	4.391	397	408	416	rBB2	2120	5903	0.12%	0.013%
13	4.684	450	456	460	rVV3	542	1286	0.03%	0.003%
14	4.915	485	494	506	rVV3	6880	20939	0.44%	0.045%
15	5.946	658	663	669	rVB3	584	1447	0.03%	0.003%
16	6.665	778	781	785	rBB2	158	243	0.01%	0.001%
17	6.982	830	833	835	rBV2	389	521	0.01%	0.001%
18	7.080	840	849	858	rBV	13246	38459	0.80%	0.083%
19	7.177	861	865	875	rVV2	4217	10212	0.21%	0.022%
20	7.281	879	882	884	rVB2	186	220	0.00%	0.000%
21	7.537	923	924	928	rVB2	347	281	0.01%	0.001%
22	7.647	929	942	956	rBV	74441	186367	3.88%	0.403%
23	7.933	984	989	991	rBV2	218	267	0.01%	0.001%
24	7.970	993	995	998	rVB	276	270	0.01%	0.001%
25	8.031	998	1005	1010	rBV3	736	1425	0.03%	0.003%
26	8.153	1021	1025	1032	rBV4	446	940	0.02%	0.002%
27	8.275	1036	1045	1059	rBV2	140587	439739	9.15%	0.950%
28	8.677	1106	1111	1112	rBV2	479	537	0.01%	0.001%
29	8.701	1112	1115	1124	rVB3	1063	2243	0.05%	0.005%
30	8.842	1130	1138	1147	rBV	141704	278088	5.79%	0.601%
31	8.927	1149	1152	1158	rVB4	799	1226	0.03%	0.003%
32	8.994	1158	1163	1168	rVB	516	884	0.02%	0.002%
33	9.067	1168	1175	1184	rBV4	3650	8255	0.17%	0.018%
34	9.274	1200	1209	1225	rVV	99273	203224	4.23%	0.439%
35	9.384	1225	1227	1229	rVV2	473	486	0.01%	0.001%
36	9.439	1232	1236	1240	rVV2	675	971	0.02%	0.002%

Data Path : Z:\voasrv\HPCHEM1\MSVOA_W\Data\VW122021\
 Data File : VW021502.D
 Acq On : 20 Dec 2021 16:48
 Operator : SY/VA
 Sample : M5171-13
 Misc : 6.35g/10.0mL/MSVOA_W/SOIL
 ALS Vial : 15 Sample Multiplier: 1

Instrument :
 MSVOA_W
 ClientSampleId :
 BGLA9

Integration Parameters: LSCINT.P

Integrator: RTE
 Smoothing : OFF
 Sampling : 1
 Start Thrs : 0.2
 Stop Thrs : 0

Filtering: 5
 Min Area: 0 % of largest Peak
 Max Peaks: 100
 Peak Location: TOP

If leading or trailing edge < 100 prefer < Baseline drop else tangent >
 Peak separation: 5

Method : Z:\voasrv\HPCHEM1\MSVOA_W\Method\SFAMWLM120921SMA.M
 Title : SFAM01.0

37	9.512	1244	1248	1251	rVB2	238	279	0.01%	0.001%
38	9.585	1256	1260	1261	rBV	208	273	0.01%	0.001%
39	9.604	1261	1263	1268	rVB2	405	425	0.01%	0.001%
40	9.652	1269	1271	1274	rBV	318	384	0.01%	0.001%
41	9.762	1283	1289	1295	rVB3	1852	3513	0.07%	0.008%
42	9.848	1299	1303	1304	rBV2	289	365	0.01%	0.001%
43	9.890	1304	1310	1317	rVB3	3261	6211	0.13%	0.013%
44	9.957	1317	1321	1324	rBV2	885	1604	0.03%	0.003%
45	10.036	1327	1334	1341	rBV	44938	81788	1.70%	0.177%
46	10.207	1355	1362	1366	rBV2	2254	4506	0.09%	0.010%
47	10.323	1374	1381	1387	rBV	181385	324493	6.75%	0.701%
48	10.390	1387	1392	1401	rVB	14096	26548	0.55%	0.057%
49	10.500	1405	1410	1417	rBV5	1931	4016	0.08%	0.009%
50	10.579	1417	1423	1432	rVB	29629	50721	1.06%	0.110%
51	10.664	1432	1437	1439	rBV	935	1628	0.03%	0.004%
52	10.701	1439	1443	1447	rVB2	1666	2662	0.06%	0.006%
53	10.762	1447	1453	1458	rVB6	1344	3070	0.06%	0.007%
54	10.835	1458	1465	1466	rBV3	1373	2242	0.05%	0.005%
55	10.927	1474	1480	1487	rBV	50924	91173	1.90%	0.197%
56	11.237	1526	1531	1534	rBV4	3033	5532	0.12%	0.012%
57	11.341	1544	1548	1550	rBV3	5492	8382	0.17%	0.018%
58	11.512	1572	1576	1588	rVB2	12612	29145	0.61%	0.063%
59	11.628	1588	1595	1605	rBV2	155782	317498	6.61%	0.686%
60	11.731	1605	1612	1621	rVB	459909	736968	15.34%	1.592%
61	11.841	1621	1630	1639	rBV	292093	566926	11.80%	1.224%
62	11.981	1647	1653	1654	rBV3	3288	5922	0.12%	0.013%
63	12.054	1662	1665	1671	rVB4	11701	21087	0.44%	0.046%
64	12.164	1672	1683	1690	rBV	157856	353496	7.36%	0.763%
65	12.250	1693	1697	1701	rVB	49704	74505	1.55%	0.161%
66	12.365	1701	1716	1722	rBV4	61338	271600	5.65%	0.587%
67	12.463	1726	1732	1737	rBV	861329	1423332	29.62%	3.074%
68	12.560	1742	1748	1755	rVV2	442225	851209	17.71%	1.838%
69	12.646	1759	1762	1766	rVV	60537	82031	1.71%	0.177%
70	12.695	1766	1770	1775	rVB2	72087	116517	2.42%	0.252%
71	12.798	1784	1787	1792	rVB	168856	260734	5.43%	0.563%
72	12.865	1792	1798	1800	rBV	307391	522947	10.88%	1.129%
73	12.896	1800	1803	1807	rVV	537579	899494	18.72%	1.943%
74	12.938	1807	1810	1815	rVB2	314664	517605	10.77%	1.118%
75	13.103	1829	1837	1843	rBV	716016	1434914	29.86%	3.099%
76	13.164	1843	1847	1854	rVV	264500	424790	8.84%	0.917%

Data Path : Z:\voasrv\HPCHEM1\MSVOA_W\Data\VW122021\
 Data File : VW021502.D
 Acq On : 20 Dec 2021 16:48
 Operator : SY/VA
 Sample : M5171-13
 Misc : 6.35g/10.0mL/MSVOA_W/SOIL
 ALS Vial : 15 Sample Multiplier: 1

Instrument :
 MSVOA_W
 ClientSampleId :
 BGLA9

Integration Parameters: LSCINT.P

Integrator: RTE
 Smoothing : OFF Filtering: 5
 Sampling : 1 Min Area: 0 % of largest Peak
 Start Thrs: 0.2 Max Peaks: 100
 Stop Thrs : 0 Peak Location: TOP

If leading or trailing edge < 100 prefer < Baseline drop else tangent >
 Peak separation: 5

Method : Z:\voasrv\HPCHEM1\MSVOA_W\Method\SFAMWLM120921SMA.M
 Title : SFAM01.0

77	13.249	1855	1861	1866	rBV	2533429	3919537	81.57%	8.465%
78	13.444	1889	1893	1896	rVB2	293044	419429	8.73%	0.906%
79	13.487	1896	1900	1908	rVB3	365346	789763	16.44%	1.706%
80	13.579	1908	1915	1921	rBV2	1224774	2374802	49.42%	5.129%
81	13.719	1933	1938	1939	rBV2	287009	403203	8.39%	0.871%
82	13.749	1939	1943	1947	rVV2	920866	1426350	29.68%	3.081%
83	13.792	1948	1950	1957	rVB4	387682	602328	12.53%	1.301%
84	13.871	1957	1963	1968	rBV2	1295060	2222523	46.25%	4.800%
85	13.944	1972	1975	1979	rBV	224865	286097	5.95%	0.618%
86	14.005	1982	1985	1987	rBV	458441	607576	12.64%	1.312%
87	14.091	1995	1999	2004	rVB	1027999	1488134	30.97%	3.214%
88	14.200	2012	2017	2022	rVB2	630366	1018152	21.19%	2.199%
89	14.255	2022	2026	2033	rBV7	198426	423298	8.81%	0.914%
90	14.341	2036	2040	2044	rVV3	368232	665946	13.86%	1.438%
91	14.414	2044	2052	2056	rVV	2660386	4758258	99.02%	10.277%
92	14.456	2056	2059	2062	rVV	1071570	1446862	30.11%	3.125%
93	14.493	2062	2065	2069	rVB	352585	470384	9.79%	1.016%
94	14.682	2092	2096	2099	rBV	353813	565441	11.77%	1.221%
95	14.725	2100	2103	2108	rVB2	505751	746575	15.54%	1.612%
96	14.798	2108	2115	2119	rBV4	877387	2302071	47.91%	4.972%
97	15.060	2154	2158	2167	rBV2	403680	851182	17.71%	1.838%
98	15.322	2196	2201	2203	rBV2	564761	965981	20.10%	2.086%
99	15.359	2203	2207	2214	rVB	2682848	4805322	100.00%	10.379%
100	16.639	2411	2417	2429	rVB	723341	1785270	37.15%	3.856%

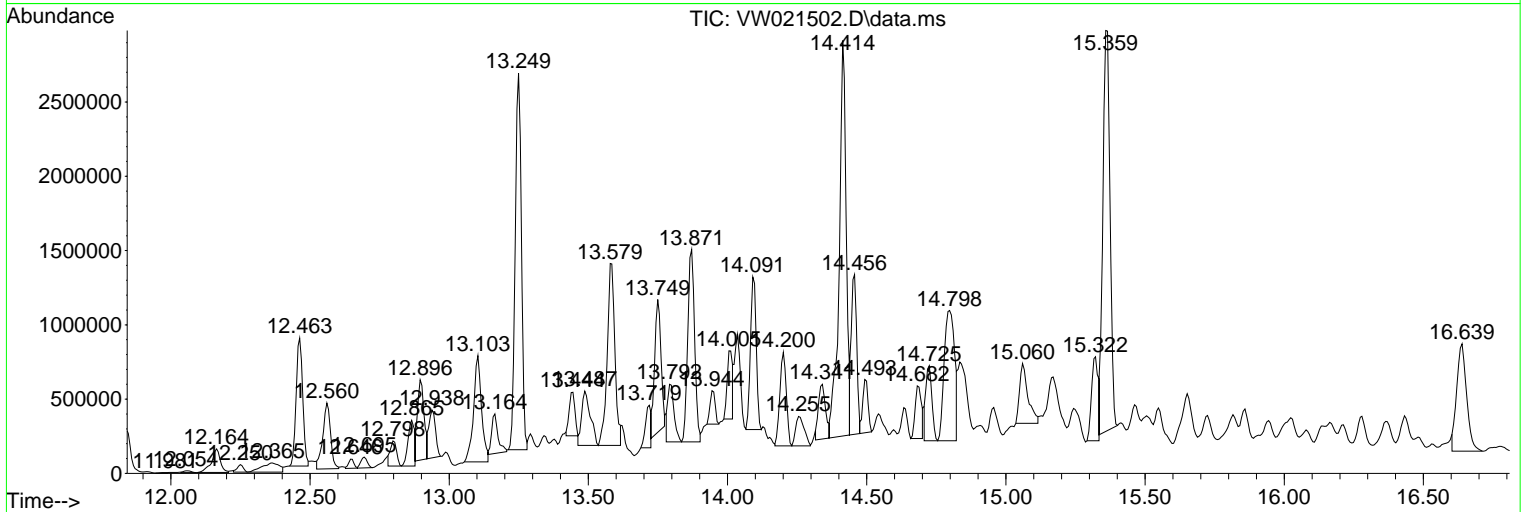
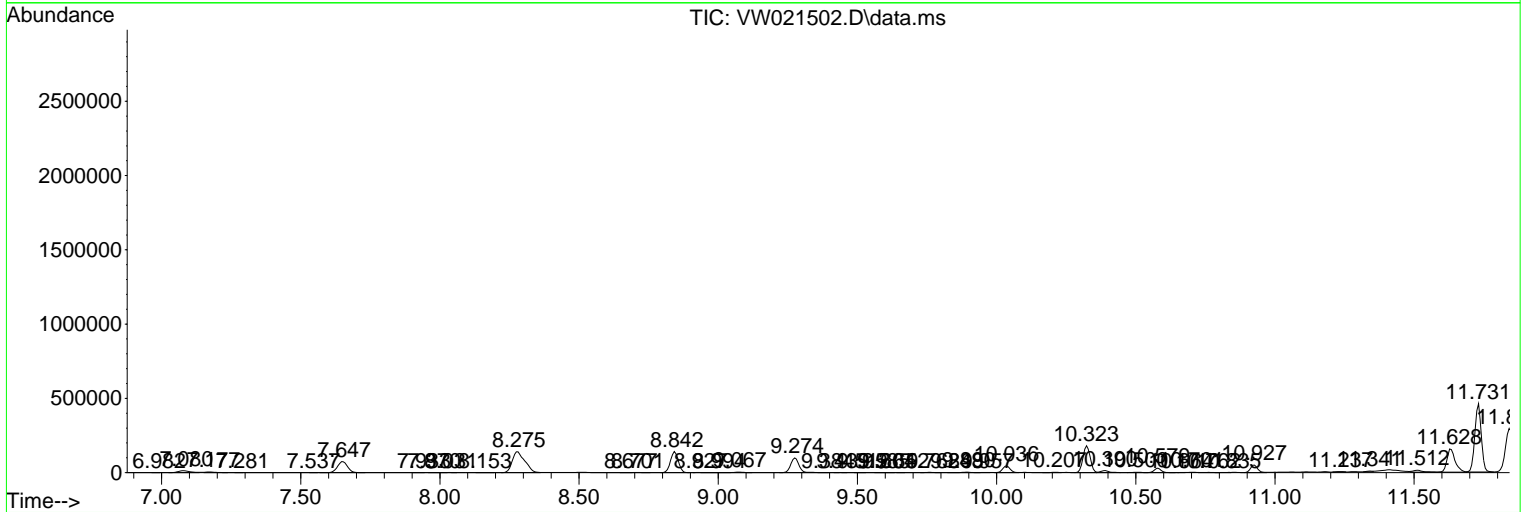
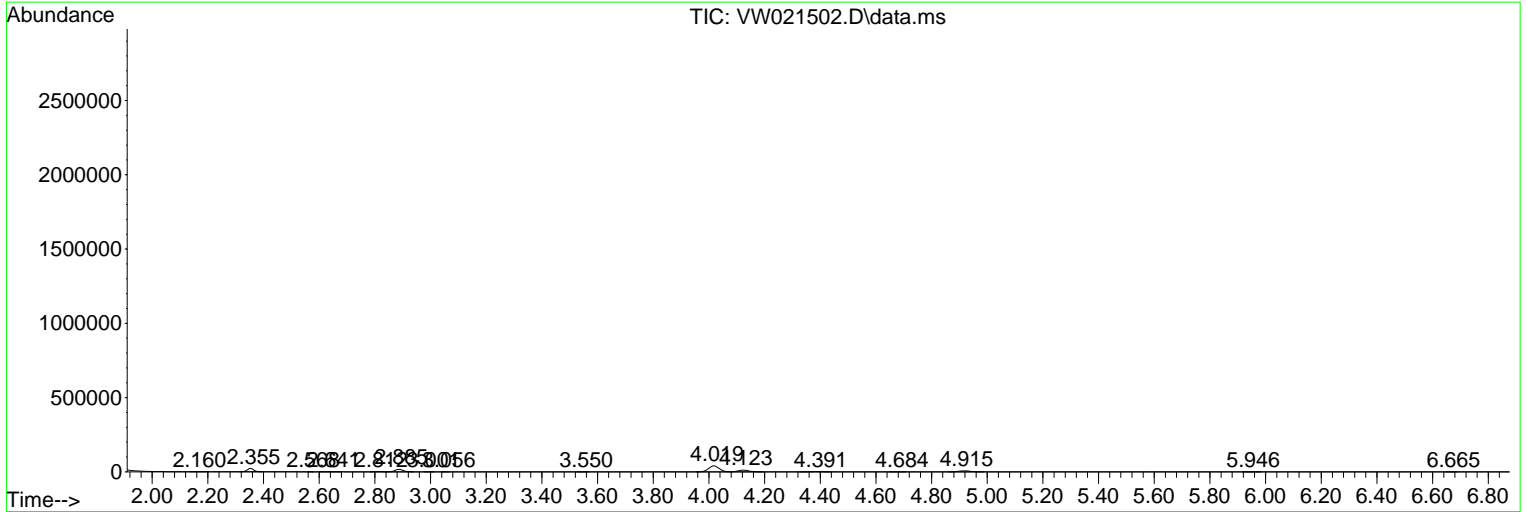
Sum of corrected areas: 46300223

Data Path : Z:\voasrv\HPCHEM1\MSVOA_W\Data\VW122021\
 Data File : VW021502.D
 Acq On : 20 Dec 2021 16:48
 Operator : SY/VA
 Sample : M5171-13
 Misc : 6.35g/10.0mL/MSVOA_W/SOIL
 ALS Vial : 15 Sample Multiplier: 1

Instrument :
 MSVOA_W
 ClientSampleId :
 BGLA9

Quant Method : Z:\voasrv\HPCHEM1\MSVOA_W\Method\SFAMWLM120921SMA.M
 Quant Title : SFAM01.0

TIC Library : C:\Database\NIST20.L
 TIC Integration Parameters: LSCINT.P



Data Path : Z:\voasrv\HPCHEM1\MSVOA_W\Data\VW122021\
 Data File : VW021502.D
 Acq On : 20 Dec 2021 16:48
 Operator : SY/VA
 Sample : M5171-13
 Misc : 6.35g/10.0mL/MSVOA_W/SOIL
 ALS Vial : 15 Sample Multiplier: 1

Instrument :
 MSVOA_W
 ClientSampleId :
 BGLA9

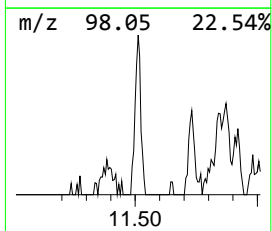
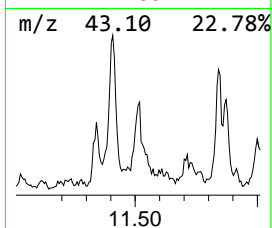
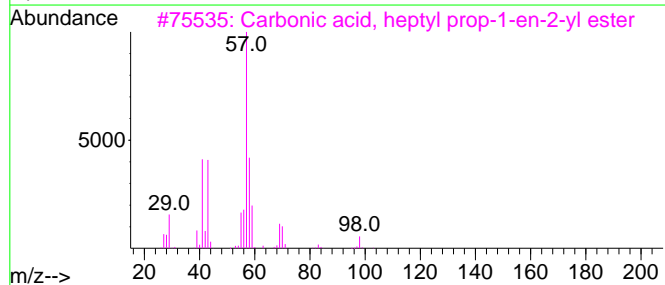
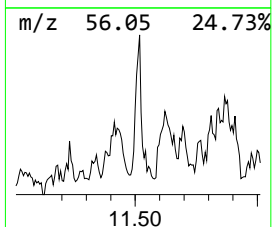
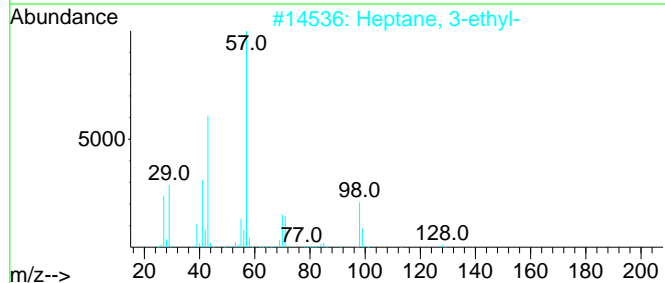
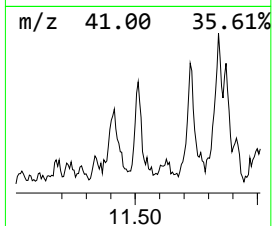
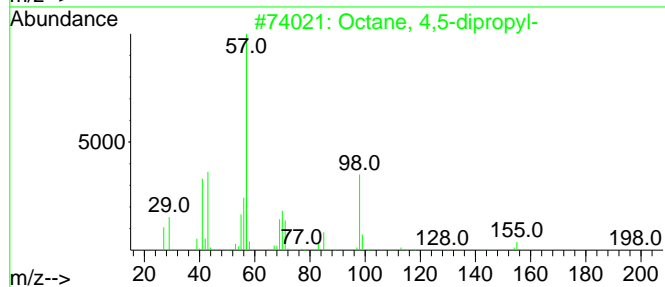
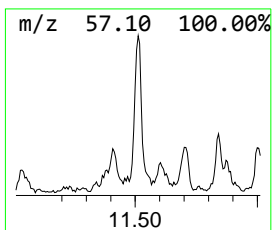
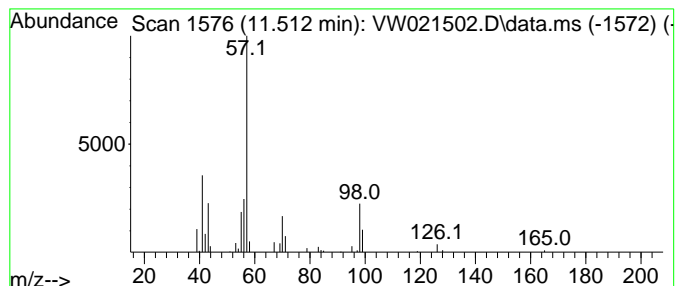
Quant Method : Z:\voasrv\HPCHEM1\MSVOA_W\Method\SFAMWLM120921SMA.M
 Quant Title : SFAM01.0

TIC Library : C:\Database\NIST20.L
 TIC Integration Parameters: LSCINT.P

 Peak Number 3 (DEL) Alkane: Straight-Chai... Concentration Rank 28

R.T.	EstConc	Area	Relative to ISTD	R.T.
11.512	2.29 ug/L	29145	Chlorobenzene-d5	11.628

Hit#	of	5	Tentative ID	MW	MolForm	CAS#	Qual
1			Octane, 4,5-dipropyl-	198	C14H30	020905-05-9	64
2			Heptane, 3-ethyl-	128	C9H20	015869-80-4	58
3			Carbonic acid, heptyl prop-1-en-...	200	C11H20O3	1000382-54-1	53
4			Octane, 2,3-dimethyl-	142	C10H22	007146-60-3	50
5			Heptane, 2,5-dimethyl-	128	C9H20	002216-30-0	50



Data Path : Z:\voasrv\HPCHEM1\MSVOA_W\Data\VW122021\
 Data File : VW021502.D
 Acq On : 20 Dec 2021 16:48
 Operator : SY/VA
 Sample : M5171-13
 Misc : 6.35g/10.0mL/MSVOA_W/SOIL
 ALS Vial : 15 Sample Multiplier: 1

Instrument :
 MSVOA_W
 ClientSampleId :
 BGLA9

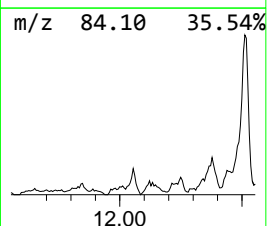
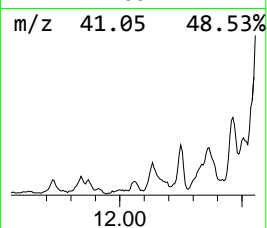
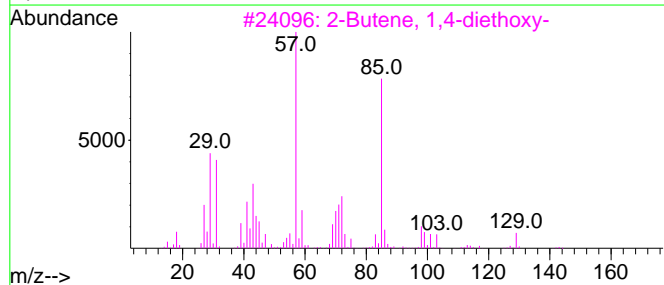
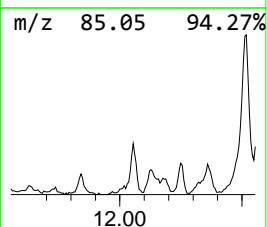
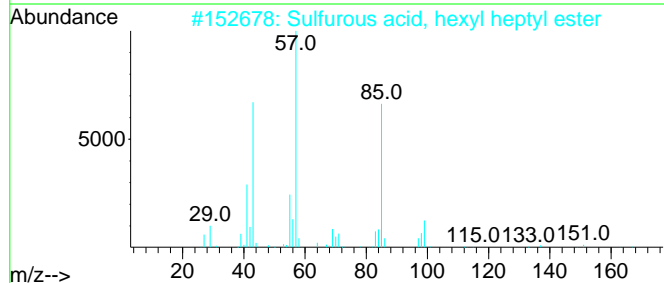
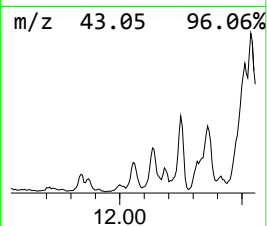
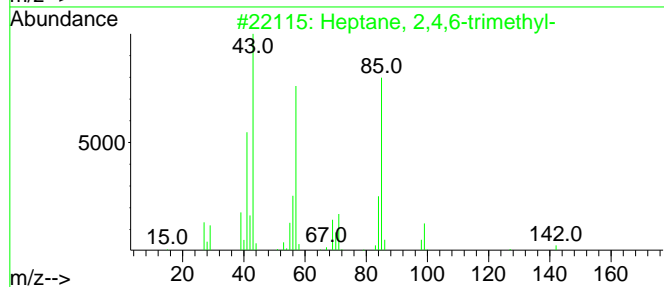
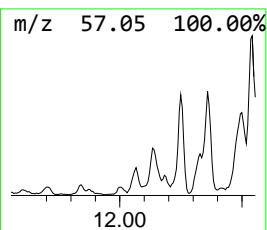
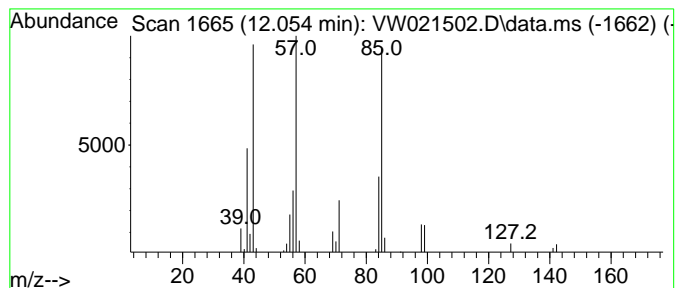
Quant Method : Z:\voasrv\HPCHEM1\MSVOA_W\Method\SFAMWLM120921SMA.M
 Quant Title : SFAM01.0

TIC Library : C:\Database\NIST20.L
 TIC Integration Parameters: LSCINT.P

 Peak Number 4 (DEL) Alkane: Straight-Chai... Concentration Rank 30

R.T.	EstConc	Area	Relative to ISTD	R.T.
12.054	1.66 ug/L	21087	Chlorobenzene-d5	11.628

Hit#	of 5	Tentative ID	MW	MolForm	CAS#	Qual
1		Heptane, 2,4,6-trimethyl-	142	C10H22	002613-61-8	87
2		Sulfurous acid, hexyl heptyl ester	264	C13H28O3S	1000309-12-9	59
3		2-Butene, 1,4-diethoxy-	144	C8H16O2	007250-85-3	59
4		Hexane, 2,3,3-trimethyl-	128	C9H20	016747-28-7	59
5		Heptane, 2,4-dimethyl-	128	C9H20	002213-23-2	59



Data Path : Z:\voasrv\HPCHEM1\MSVOA_W\Data\VW122021\
 Data File : VW021502.D
 Acq On : 20 Dec 2021 16:48
 Operator : SY/VA
 Sample : M5171-13
 Misc : 6.35g/10.0mL/MSVOA_W/SOIL
 ALS Vial : 15 Sample Multiplier: 1

Instrument :
 MSVOA_W
 ClientSampleId :
 BGLA9

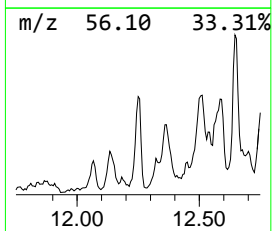
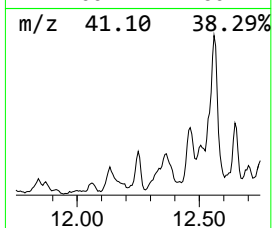
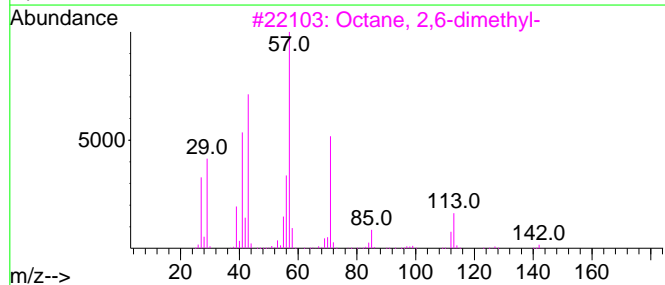
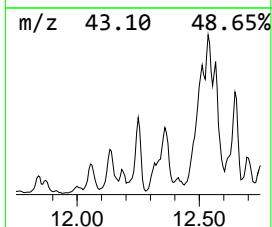
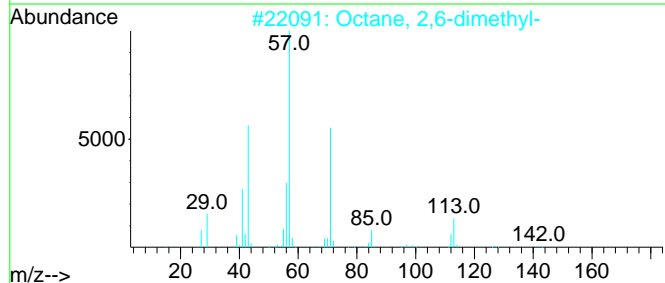
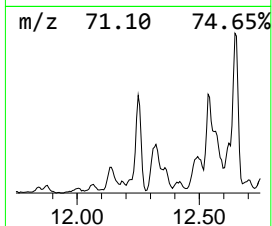
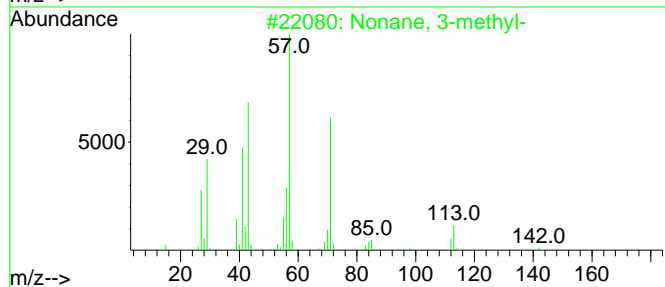
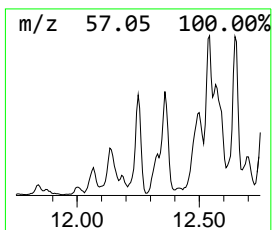
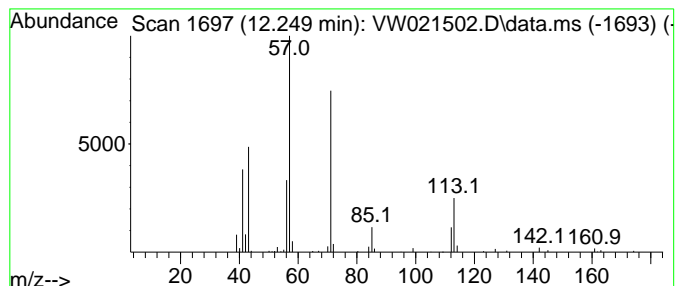
Quant Method : Z:\voasrv\HPCHEM1\MSVOA_W\Method\SFAMWLM120921SMA.M
 Quant Title : SFAM01.0

TIC Library : C:\Database\NIST20.L
 TIC Integration Parameters: LSCINT.P

 Peak Number 5 (DEL) Alkane: Straight-Chai... Concentration Rank 20

R.T.	EstConc	Area	Relative to ISTD	R.T.
12.249	5.87 ug/L	74505	Chlorobenzene-d5	11.628

Hit# of 5	Tentative ID	MW	MolForm	CAS#	Qual
1	Nonane, 3-methyl-	142	C10H22	005911-04-6	91
2	Octane, 2,6-dimethyl-	142	C10H22	002051-30-1	91
3	Octane, 2,6-dimethyl-	142	C10H22	002051-30-1	86
4	Octane, 2,6-dimethyl-	142	C10H22	002051-30-1	86
5	Octane, 2,6-dimethyl-	142	C10H22	002051-30-1	83



Data Path : Z:\voasrv\HPCHEM1\MSVOA_W\Data\VW122021\
 Data File : VW021502.D
 Acq On : 20 Dec 2021 16:48
 Operator : SY/VA
 Sample : M5171-13
 Misc : 6.35g/10.0mL/MSVOA_W/SOIL
 ALS Vial : 15 Sample Multiplier: 1

Instrument :
 MSVOA_W
 ClientSampleId :
 BGLA9

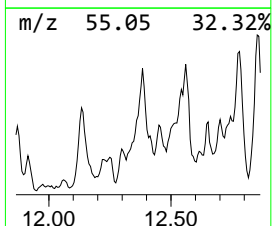
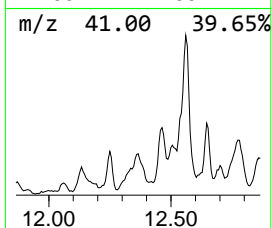
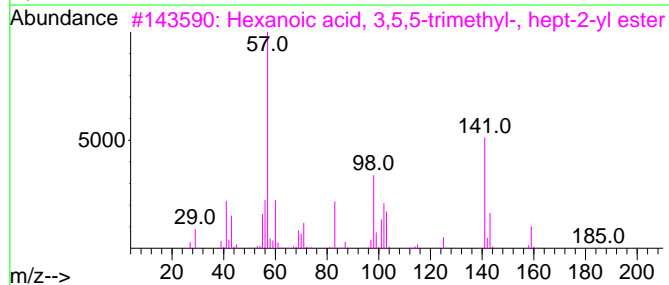
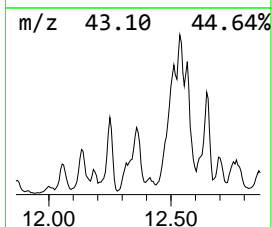
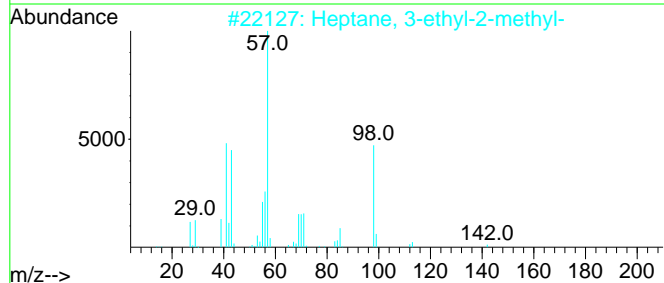
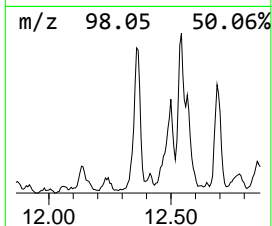
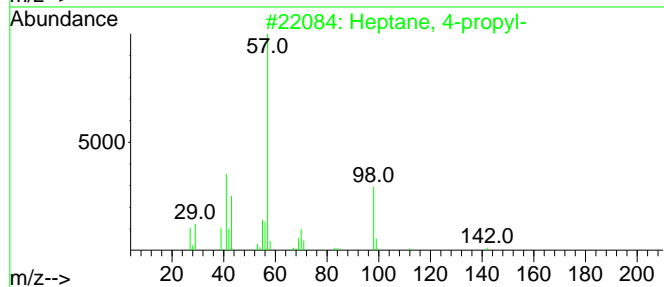
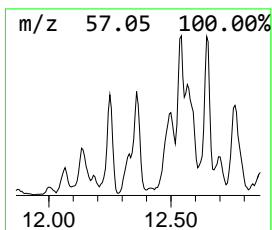
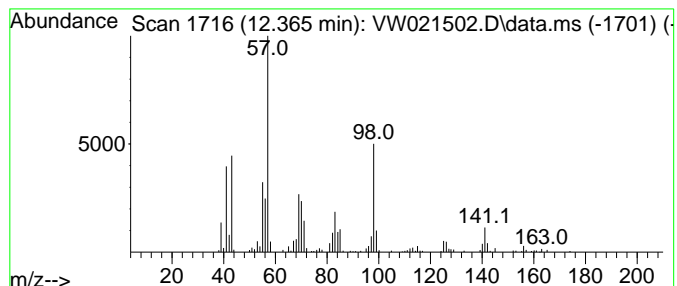
Quant Method : Z:\voasrv\HPCHEM1\MSVOA_W\Method\SFAMWLM120921SMA.M
 Quant Title : SFAM01.0

TIC Library : C:\Database\NIST20.L
 TIC Integration Parameters: LSCINT.P

 Peak Number 6 (DEL) Alkane: Straight-Chai... Concentration Rank 5

R.T.	EstConc	Area	Relative to ISTD	R.T.
12.365	21.39 ug/L	271600	Chlorobenzene-d5	11.628

Hit#	of 5	Tentative ID	MW	MolForm	CAS#	Qual
1		Heptane, 4-propyl-	142	C10H22	003178-29-8	50
2		Heptane, 3-ethyl-2-methyl-	142	C10H22	014676-29-0	47
3		Hexanoic acid, 3,5,5-trimethyl-, ...	256	C16H32O2	1000406-82-1	43
4		Carbonic acid, butyl heptyl ester	216	C12H24O3	1000314-63-4	43
5		Nonane, 4-methyl-	142	C10H22	017301-94-9	38



Data Path : Z:\voasrv\HPCHEM1\MSVOA_W\Data\VW122021\
 Data File : VW021502.D
 Acq On : 20 Dec 2021 16:48
 Operator : SY/VA
 Sample : M5171-13
 Misc : 6.35g/10.0mL/MSVOA_W/SOIL
 ALS Vial : 15 Sample Multiplier: 1

Instrument :
 MSVOA_W
 ClientSampleId :
 BGLA9

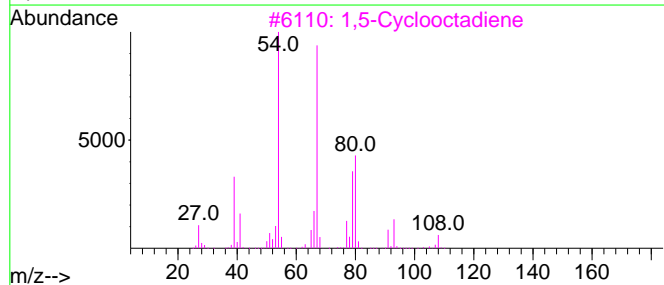
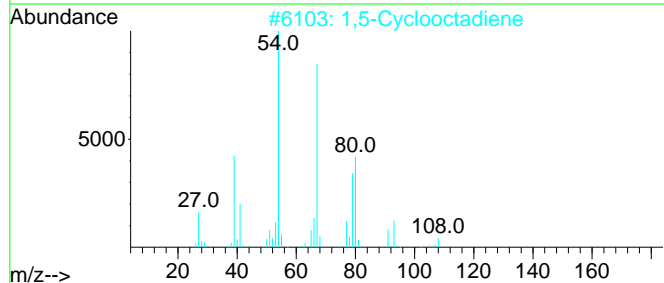
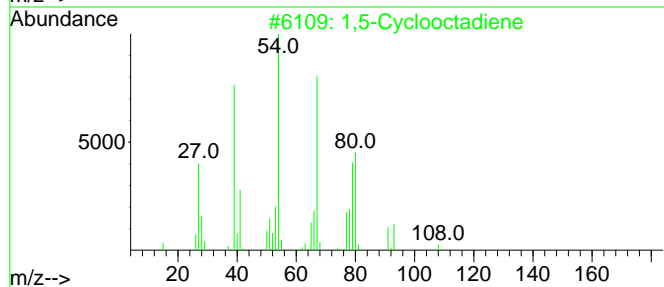
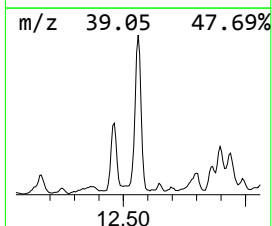
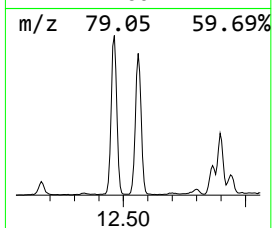
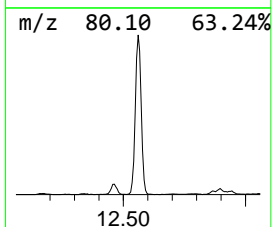
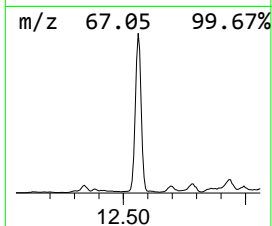
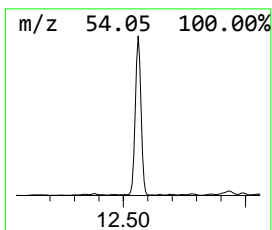
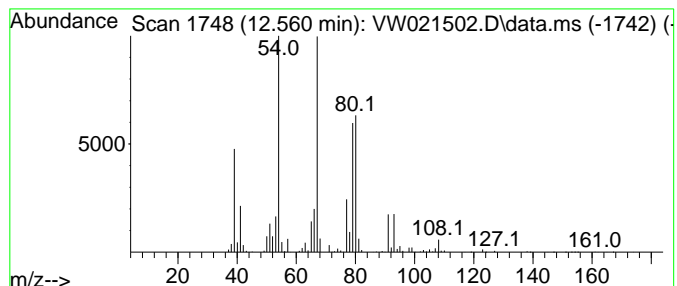
Quant Method : Z:\voasrv\HPCHEM1\MSVOA_W\Method\SFAMWLM120921SMA.M
 Quant Title : SFAM01.0

TIC Library : C:\Database\NIST20.L
 TIC Integration Parameters: LSCINT.P

 Peak Number 7 1,5-Cyclooctadiene Concentration Rank 1

R.T.	EstConc	Area	Relative to ISTD	R.T.
12.560	67.02 ug/L	851209	Chlorobenzene-d5	11.628

Hit#	of	5	Tentative ID	MW	MolForm	CAS#	Qual
1			1,5-Cyclooctadiene	108	C8H12	000111-78-4	94
2			1,5-Cyclooctadiene	108	C8H12	000111-78-4	91
3			1,5-Cyclooctadiene	108	C8H12	000111-78-4	90
4			1,5-Cyclooctadiene	108	C8H12	000111-78-4	86
5			1,5-Cyclooctadiene	108	C8H12	000111-78-4	81



Data Path : Z:\voasrv\HPCHEM1\MSVOA_W\Data\VW122021\
 Data File : VW021502.D
 Acq On : 20 Dec 2021 16:48
 Operator : SY/VA
 Sample : M5171-13
 Misc : 6.35g/10.0mL/MSVOA_W/SOIL
 ALS Vial : 15 Sample Multiplier: 1

Instrument :
 MSVOA_W
 ClientSampleId :
 BGLA9

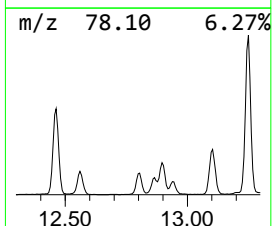
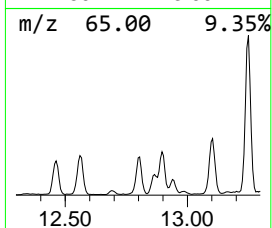
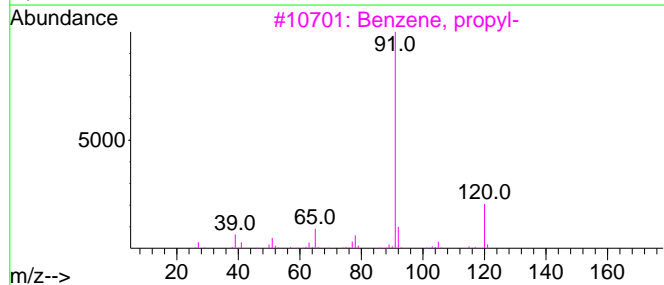
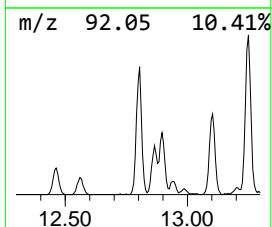
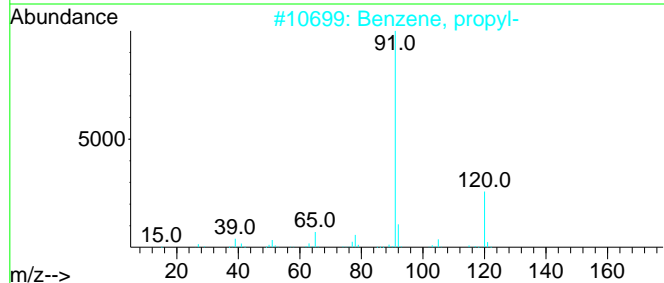
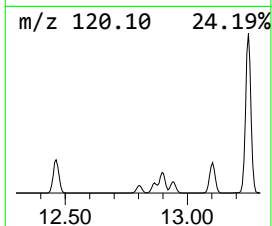
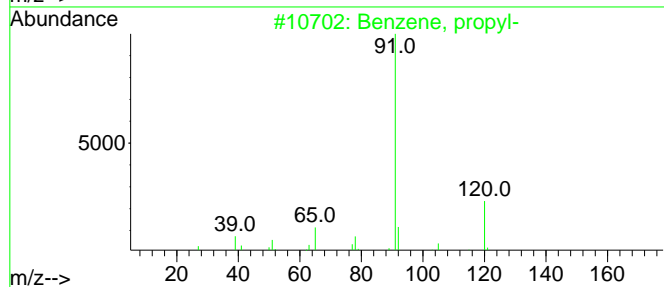
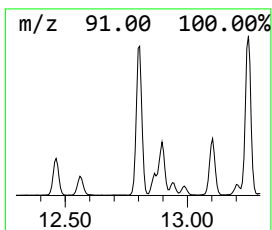
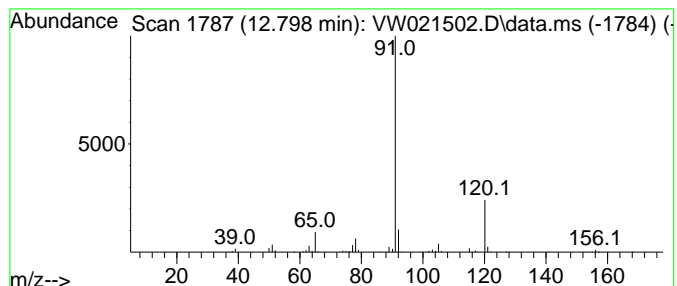
Quant Method : Z:\voasrv\HPCHEM1\MSVOA_W\Method\SFAMWLM120921SMA.M
 Quant Title : SFAM01.0

TIC Library : C:\Database\NIST20.L
 TIC Integration Parameters: LSCINT.P

 Peak Number 8 Benzene, propyl- Concentration Rank 27

R.T.	EstConc	Area	Relative to ISTD	R.T.
12.798	2.74 ug/L	260734	1,4-Dichlorobenzene-d4	13.554

Hit#	of	5	Tentative ID	MW	MolForm	CAS#	Qual
1			Benzene, propyl-	120	C9H12	000103-65-1	90
2			Benzene, propyl-	120	C9H12	000103-65-1	90
3			Benzene, propyl-	120	C9H12	000103-65-1	87
4			1,2-Ethanediamine, N,N'-bis(phen...	240	C16H20N2	000140-28-3	78
5			N-Benzyl-2-phenethylamine	211	C15H17N	003647-71-0	74



Data Path : Z:\voasrv\HPCHEM1\MSVOA_W\Data\VW122021\
 Data File : VW021502.D
 Acq On : 20 Dec 2021 16:48
 Operator : SY/VA
 Sample : M5171-13
 Misc : 6.35g/10.0mL/MSVOA_W/SOIL
 ALS Vial : 15 Sample Multiplier: 1

Instrument :
 MSVOA_W
 ClientSampleId :
 BGLA9

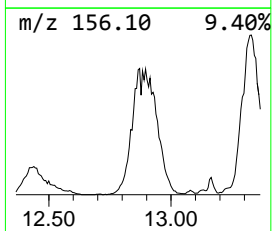
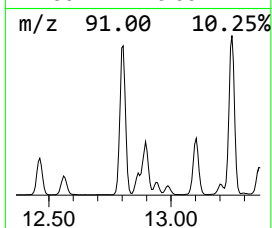
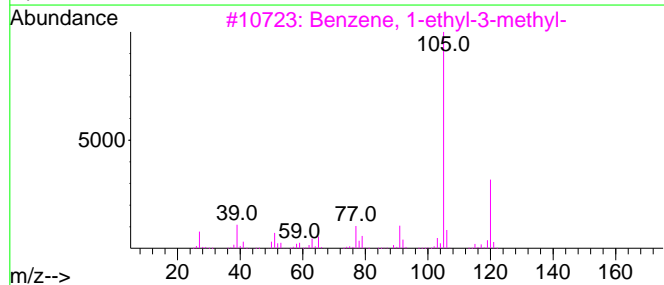
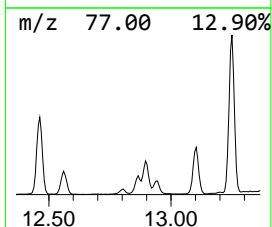
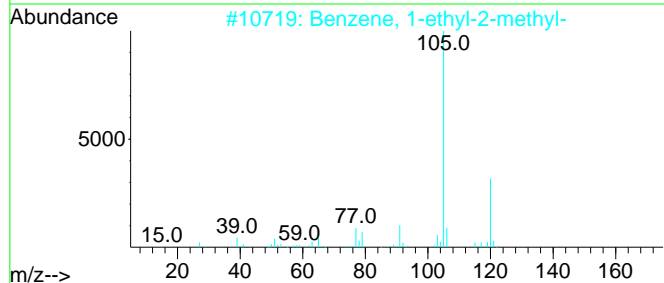
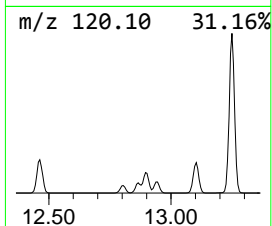
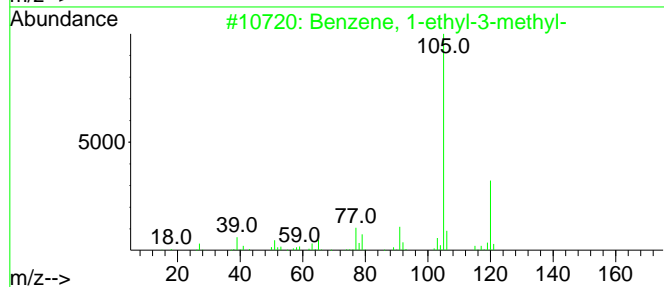
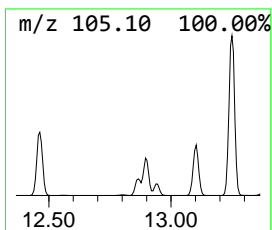
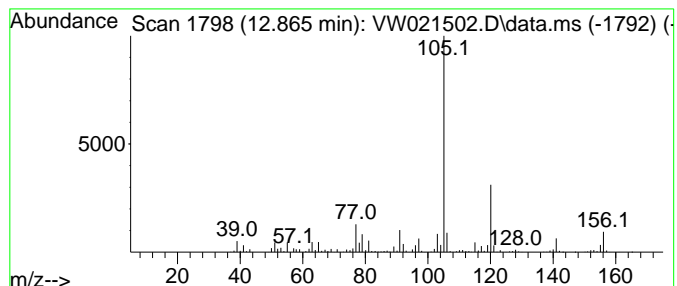
Quant Method : Z:\voasrv\HPCHEM1\MSVOA_W\Method\SFAMWLM120921SMA.M
 Quant Title : SFAM01.0

TIC Library : C:\Database\NIST20.L
 TIC Integration Parameters: LSCINT.P

 Peak Number 9 Benzene, 1-ethyl-3-methyl- Concentration Rank 21

R.T.	EstConc	Area	Relative to ISTD	R.T.
12.865	5.51 ug/L	522947	1,4-Dichlorobenzene-d4	13.554

Hit#	of	5	Tentative ID	MW	MolForm	CAS#	Qual
1			Benzene, 1-ethyl-3-methyl-	120	C9H12	000620-14-4	95
2			Benzene, 1-ethyl-2-methyl-	120	C9H12	000611-14-3	94
3			Benzene, 1-ethyl-3-methyl-	120	C9H12	000620-14-4	94
4			Benzene, 1-ethyl-2-methyl-	120	C9H12	000611-14-3	94
5			Benzene, 1-ethyl-2-methyl-	120	C9H12	000611-14-3	93



Data Path : Z:\voasrv\HPCHEM1\MSVOA_W\Data\VW122021\
 Data File : VW021502.D
 Acq On : 20 Dec 2021 16:48
 Operator : SY/VA
 Sample : M5171-13
 Misc : 6.35g/10.0mL/MSVOA_W/SOIL
 ALS Vial : 15 Sample Multiplier: 1

Instrument :
 MSVOA_W
 ClientSampleId :
 BGLA9

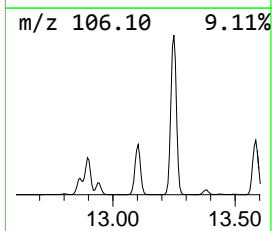
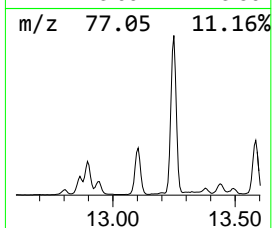
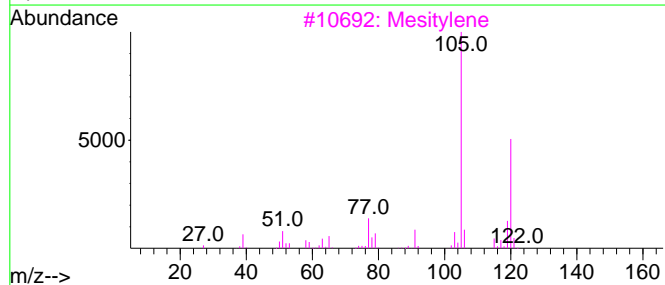
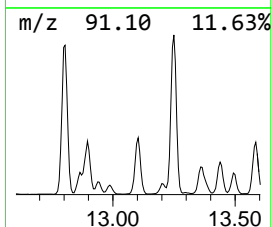
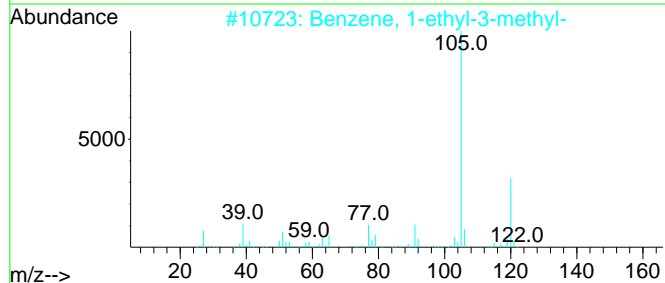
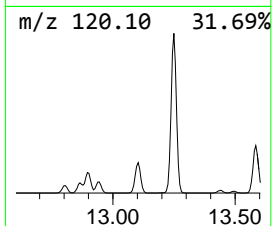
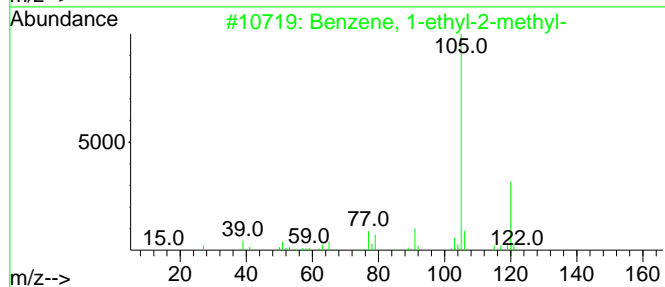
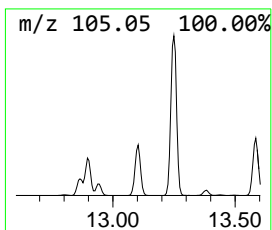
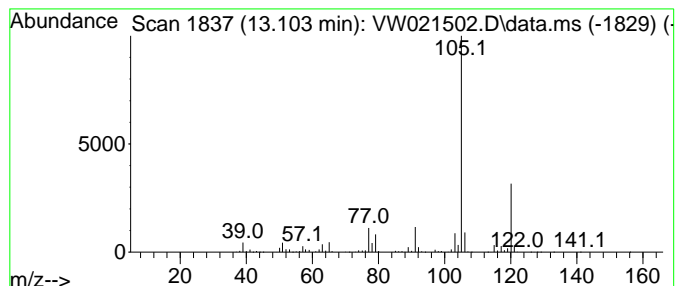
Quant Method : Z:\voasrv\HPCHEM1\MSVOA_W\Method\SFAMWLM120921SMA.M
 Quant Title : SFAM01.0

TIC Library : C:\Database\NIST20.L
 TIC Integration Parameters: LSCINT.P

 Peak Number 10 Benzene, 1-ethyl-2-methyl- Concentration Rank 9

R.T.	EstConc	Area	Relative to ISTD	R.T.
13.103	15.11 ug/L	1434910	1,4-Dichlorobenzene-d4	13.554

Hit#	of	5	Tentative ID	MW	MolForm	CAS#	Qual
1			Benzene, 1-ethyl-2-methyl-	120	C9H12	000611-14-3	94
2			Benzene, 1-ethyl-3-methyl-	120	C9H12	000620-14-4	91
3			Mesitylene	120	C9H12	000108-67-8	91
4			Benzene, 1-ethyl-2-methyl-	120	C9H12	000611-14-3	91
5			Mesitylene	120	C9H12	000108-67-8	91



Data Path : Z:\voasrv\HPCHEM1\MSVOA_W\Data\VW122021\
 Data File : VW021502.D
 Acq On : 20 Dec 2021 16:48
 Operator : SY/VA
 Sample : M5171-13
 Misc : 6.35g/10.0mL/MSVOA_W/SOIL
 ALS Vial : 15 Sample Multiplier: 1

Instrument :
 MSVOA_W
 ClientSampleId :
 BGLA9

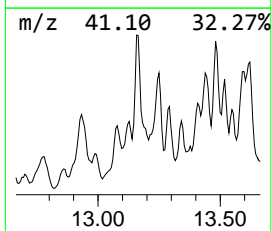
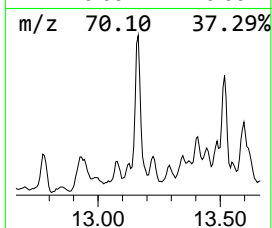
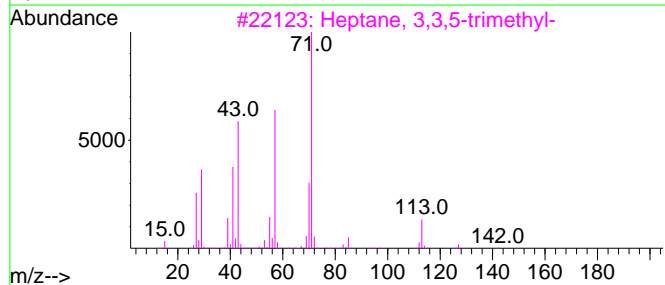
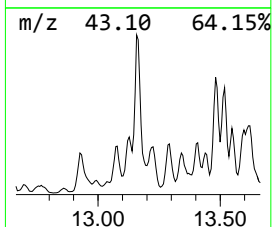
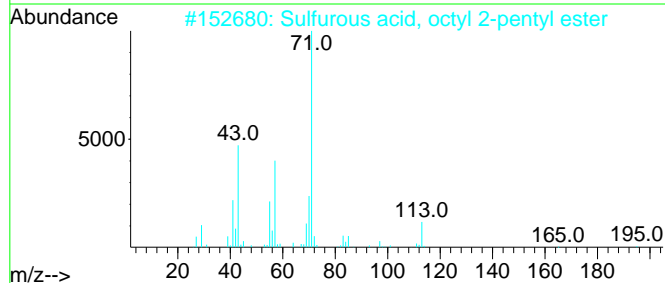
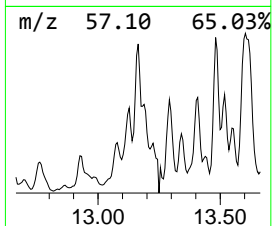
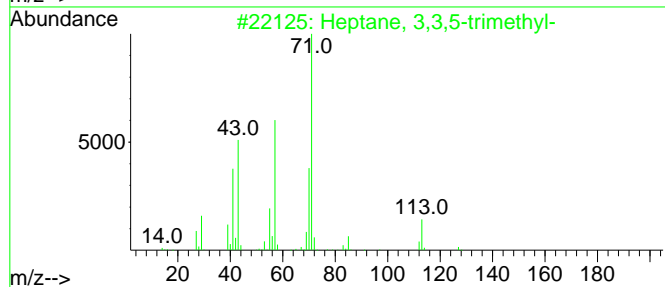
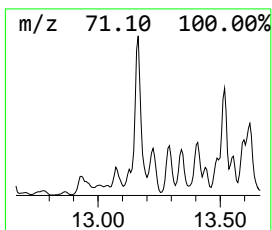
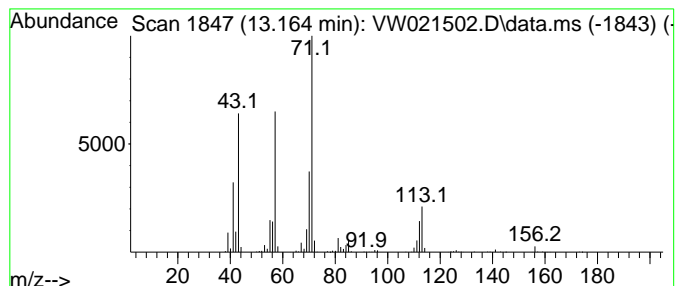
Quant Method : Z:\voasrv\HPCHEM1\MSVOA_W\Method\SFAMWLM120921SMA.M
 Quant Title : SFAM01.0

TIC Library : C:\Database\NIST20.L
 TIC Integration Parameters: LSCINT.P

 Peak Number 11 (DEL) Alkane: Straight-Chai... Concentration Rank 23

R.T.	EstConc	Area	Relative to ISTD	R.T.
13.164	4.47 ug/L	424790	1,4-Dichlorobenzene-d4	13.554

Hit#	of 5	Tentative ID	MW	MolForm	CAS#	Qual
1		Heptane, 3,3,5-trimethyl-	142	C10H22	007154-80-5	72
2		Sulfurous acid, octyl 2-pentyl e...	264	C13H28O3S	1000309-15-7	72
3		Heptane, 3,3,5-trimethyl-	142	C10H22	007154-80-5	72
4		Oxalic acid, butyl 2-ethylhexyl ...	258	C14H26O4	1000309-38-6	64
5		Heptane, 3,3,5-trimethyl-	142	C10H22	007154-80-5	64



Data Path : Z:\voasrv\HPCHEM1\MSVOA_W\Data\VW122021\
 Data File : VW021502.D
 Acq On : 20 Dec 2021 16:48
 Operator : SY/VA
 Sample : M5171-13
 Misc : 6.35g/10.0mL/MSVOA_W/SOIL
 ALS Vial : 15 Sample Multiplier: 1

Instrument :
 MSVOA_W
 ClientSampleId :
 BGLA9

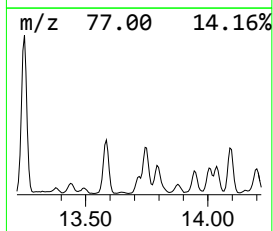
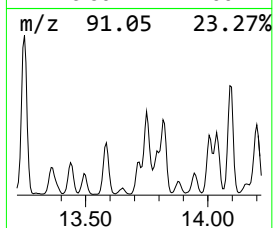
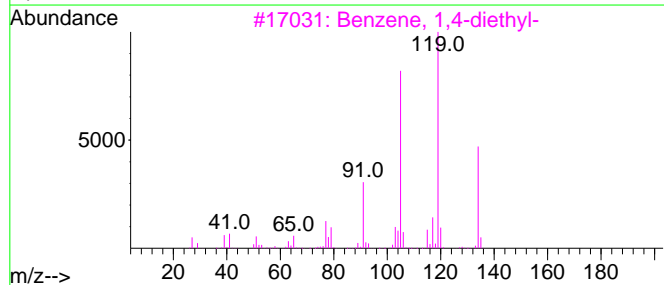
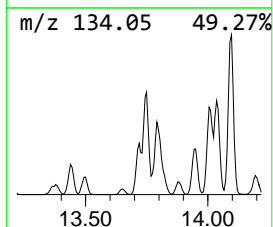
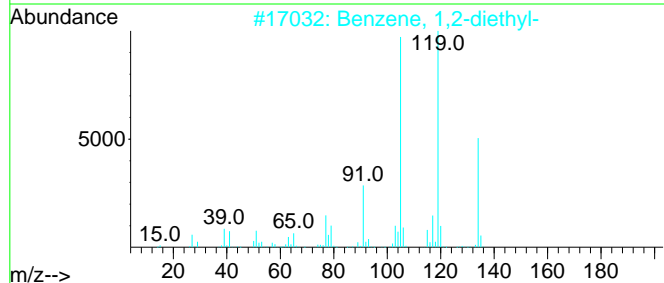
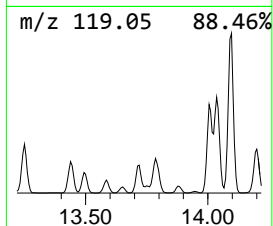
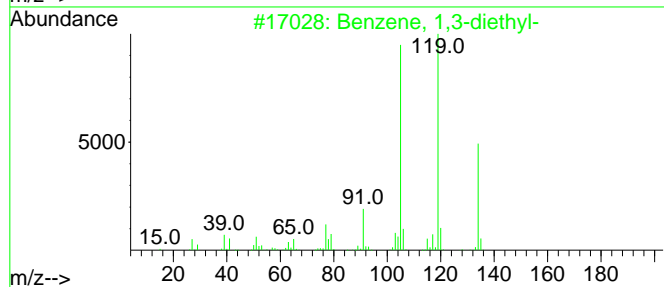
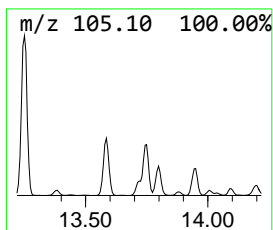
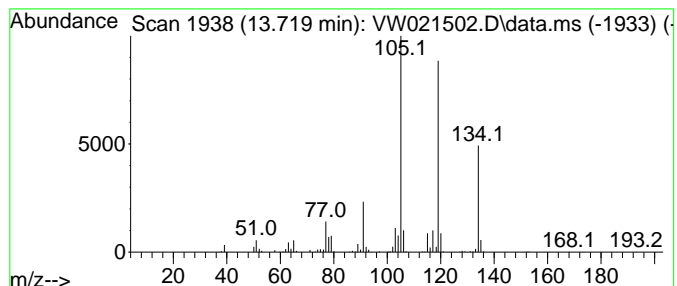
Quant Method : Z:\voasrv\HPCHEM1\MSVOA_W\Method\SFAMWLM120921SMA.M
 Quant Title : SFAM01.0

TIC Library : C:\Database\NIST0.L
 TIC Integration Parameters: LSCINT.P

 Peak Number 12 Benzene, 1,3-diethyl- Concentration Rank 25

R.T.	EstConc	Area	Relative to ISTD	R.T.
13.719	4.24 ug/L	403203	1,4-Dichlorobenzene-d4	13.554

Hit#	of	5	Tentative ID	MW	MolForm	CAS#	Qual
1			Benzene, 1,3-diethyl-	134	C10H14	000141-93-5	96
2			Benzene, 1,2-diethyl-	134	C10H14	000135-01-3	95
3			Benzene, 1,4-diethyl-	134	C10H14	000105-05-5	95
4			Benzene, 1,3-diethyl-	134	C10H14	000141-93-5	94
5			Benzene, 1,3-diethyl-	134	C10H14	000141-93-5	94



Data Path : Z:\voasrv\HPCHEM1\MSVOA_W\Data\VW122021\
 Data File : VW021502.D
 Acq On : 20 Dec 2021 16:48
 Operator : SY/VA
 Sample : M5171-13
 Misc : 6.35g/10.0mL/MSVOA_W/SOIL
 ALS Vial : 15 Sample Multiplier: 1

Instrument :
 MSVOA_W
 ClientSampleId :
 BGLA9

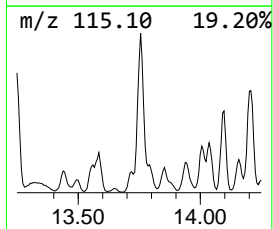
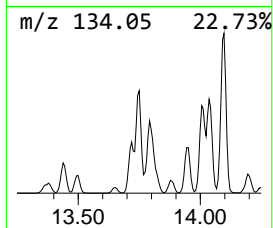
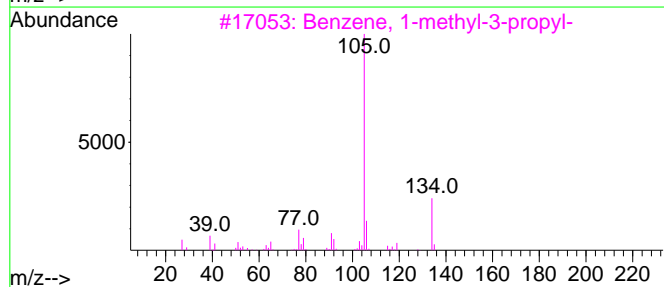
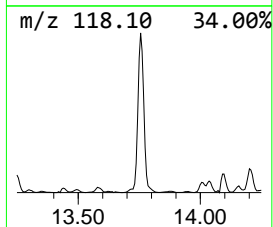
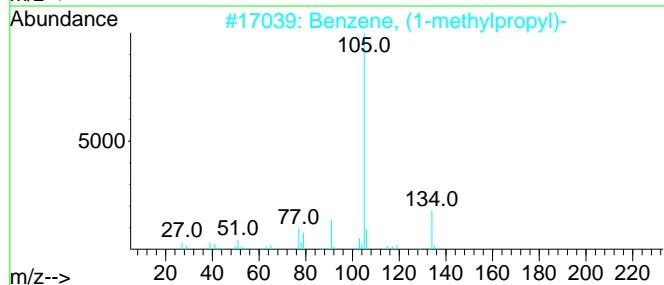
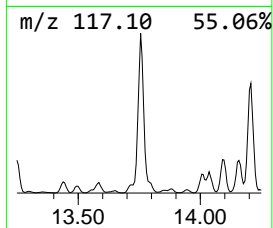
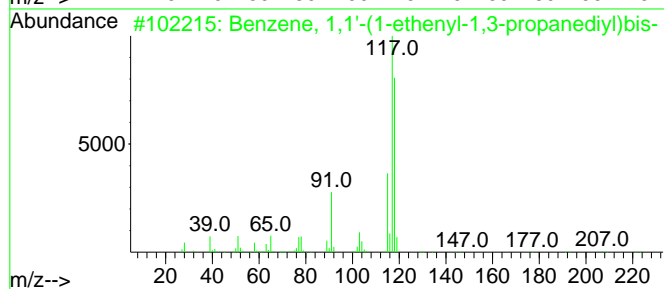
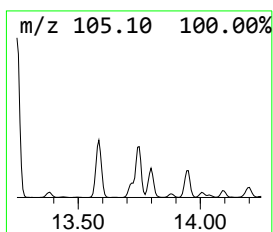
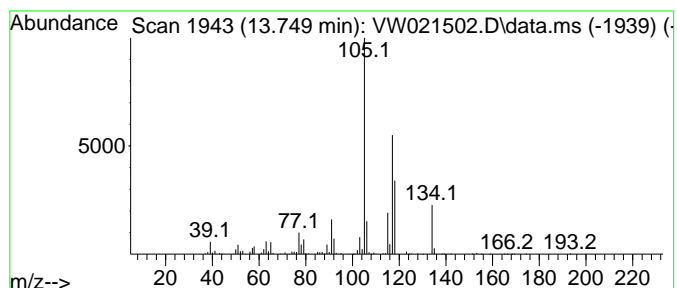
Quant Method : Z:\voasrv\HPCHEM1\MSVOA_W\Method\SFAMWLM120921SMA.M
 Quant Title : SFAM01.0

TIC Library : C:\Database\NIST20.L
 TIC Integration Parameters: LSCINT.P

 Peak Number 13 Benzene, 1,1'-(1-ethenyl-1,... Concentration Rank 10

R.T.	EstConc	Area	Relative to ISTD	R.T.
13.749	15.02 ug/L	1426350	1,4-Dichlorobenzene-d4	13.554

Hit#	of	5	Tentative ID	MW	MolForm	CAS#	Qual
1			Benzene, 1,1'-(1-ethenyl-1,3-pro...	222	C17H18	061141-97-7	52
2			Benzene, (1-methylpropyl)-	134	C10H14	000135-98-8	46
3			Benzene, 1-methyl-3-propyl-	134	C10H14	001074-43-7	46
4			7-Methylenecycloocta-1,3,5-triene	118	C9H10	002570-13-0	43
5			Indane	118	C9H10	000496-11-7	43



Data Path : Z:\voasrv\HPCHEM1\MSVOA_W\Data\VW122021\
 Data File : VW021502.D
 Acq On : 20 Dec 2021 16:48
 Operator : SY/VA
 Sample : M5171-13
 Misc : 6.35g/10.0mL/MSVOA_W/SOIL
 ALS Vial : 15 Sample Multiplier: 1

Instrument :
 MSVOA_W
 ClientSampleId :
 BGLA9

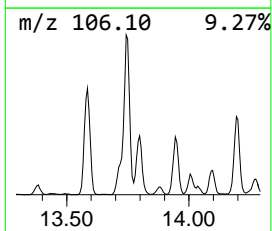
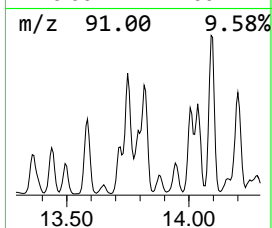
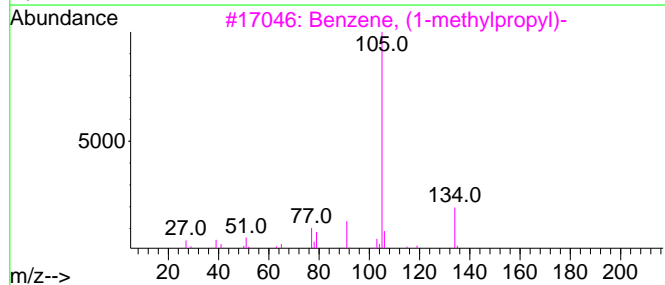
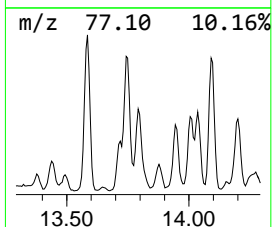
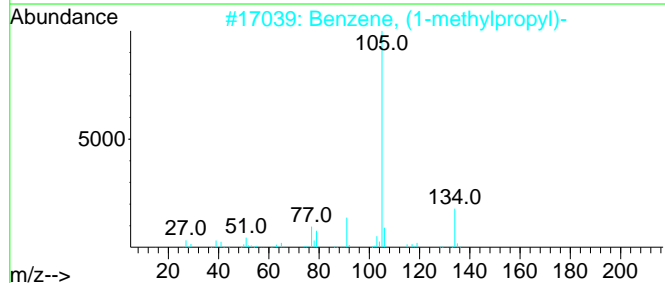
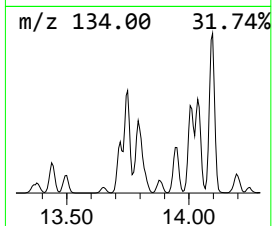
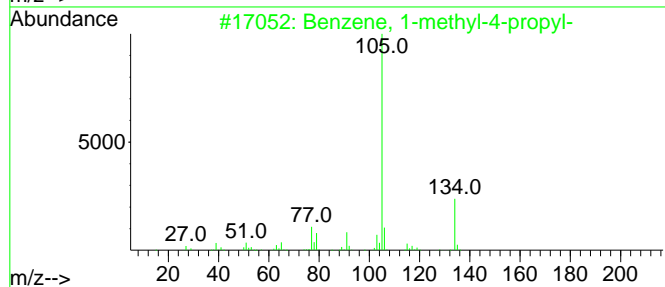
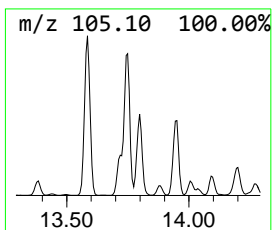
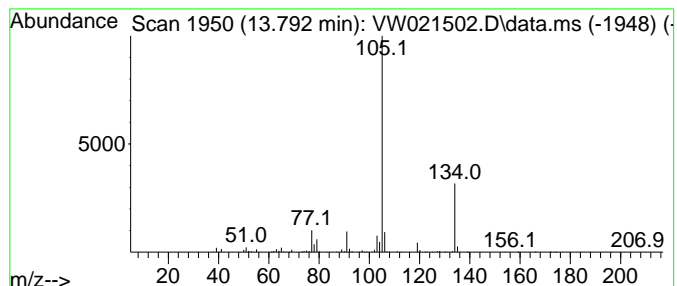
Quant Method : Z:\voasrv\HPCHEM1\MSVOA_W\Method\SFAMWLM120921SMA.M
 Quant Title : SFAM01.0

TIC Library : C:\Database\NIST20.L
 TIC Integration Parameters: LSCINT.P

 Peak Number 14 Benzene, 1-methyl-4-propyl- Concentration Rank 18

R.T.	EstConc	Area	Relative to ISTD	R.T.
13.792	6.34 ug/L	602328	1,4-Dichlorobenzene-d4	13.554

Hit#	of 5	Tentative ID	MW	MolForm	CAS#	Qual
1		Benzene, 1-methyl-4-propyl-	134	C10H14	001074-55-1	91
2		Benzene, (1-methylpropyl)-	134	C10H14	000135-98-8	90
3		Benzene, (1-methylpropyl)-	134	C10H14	000135-98-8	90
4		Benzene, 1-methyl-2-propyl-	134	C10H14	001074-17-5	90
5		2-Tolyloxirane	134	C9H10O	002783-26-8	86



Data Path : Z:\voasrv\HPCHEM1\MSVOA_W\Data\VW122021\
 Data File : VW021502.D
 Acq On : 20 Dec 2021 16:48
 Operator : SY/VA
 Sample : M5171-13
 Misc : 6.35g/10.0mL/MSVOA_W/SOIL
 ALS Vial : 15 Sample Multiplier: 1

Instrument :
 MSVOA_W
 ClientSampleId :
 BGLA9

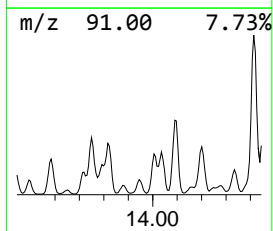
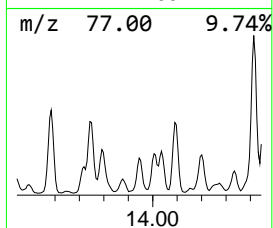
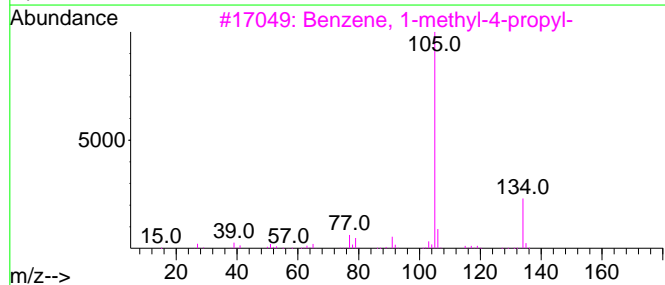
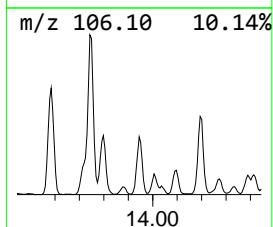
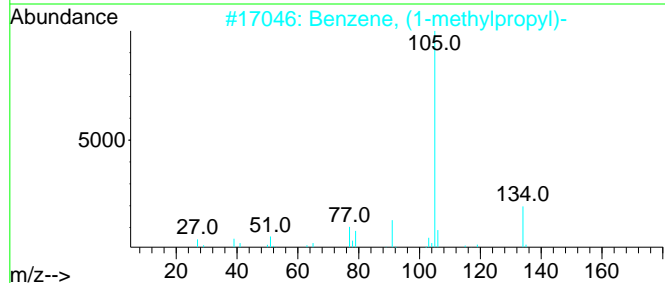
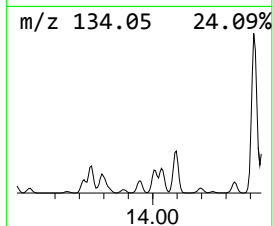
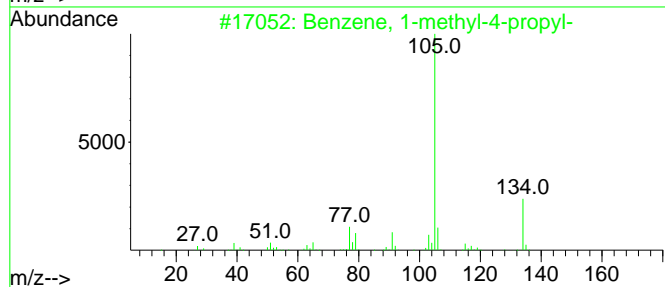
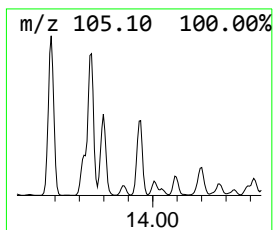
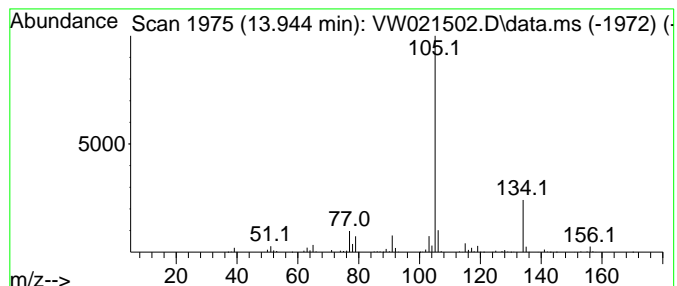
Quant Method : Z:\voasrv\HPCHEM1\MSVOA_W\Method\SFAMWLM120921SMA.M
 Quant Title : SFAM01.0

TIC Library : C:\Database\NIST20.L
 TIC Integration Parameters: LSCINT.P

 Peak Number 15 Benzene, (1-methylpropyl)- Concentration Rank 26

R.T.	EstConc	Area	Relative to ISTD	R.T.
13.944	3.01 ug/L	286097	1,4-Dichlorobenzene-d4	13.554

Hit#	of	5	Tentative ID	MW	MolForm	CAS#	Qual
1			Benzene, 1-methyl-4-propyl-	134	C10H14	001074-55-1	93
2			Benzene, (1-methylpropyl)-	134	C10H14	000135-98-8	90
3			Benzene, 1-methyl-4-propyl-	134	C10H14	001074-55-1	90
4			Benzene, 1-methyl-4-propyl-	134	C10H14	001074-55-1	90
5			Benzene, 1-methyl-3-propyl-	134	C10H14	001074-43-7	90



Data Path : Z:\voasrv\HPCHEM1\MSVOA_W\Data\VW122021\
 Data File : VW021502.D
 Acq On : 20 Dec 2021 16:48
 Operator : SY/VA
 Sample : M5171-13
 Misc : 6.35g/10.0mL/MSVOA_W/SOIL
 ALS Vial : 15 Sample Multiplier: 1

Instrument :
 MSVOA_W
 ClientSampleId :
 BGLA9

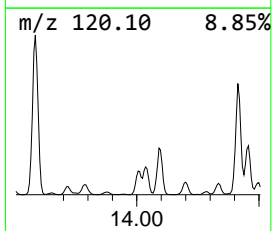
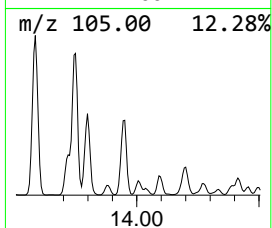
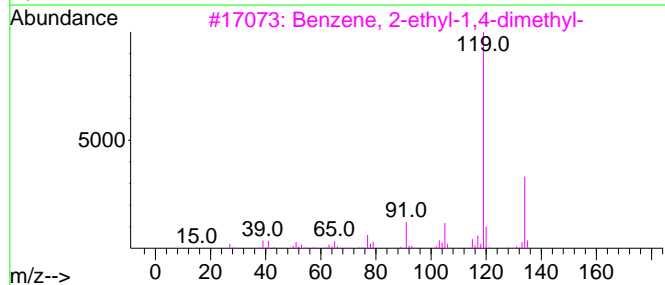
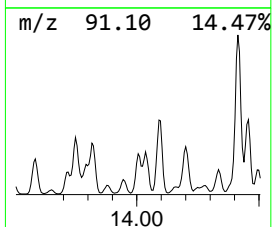
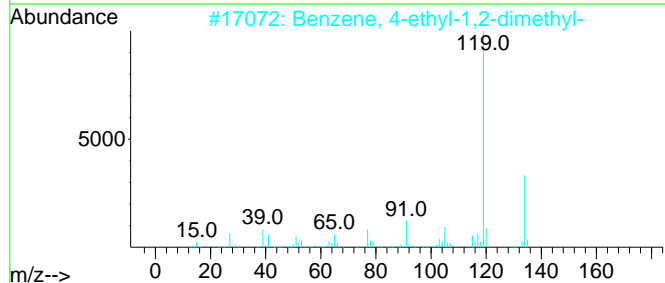
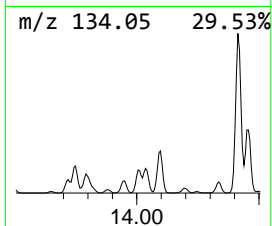
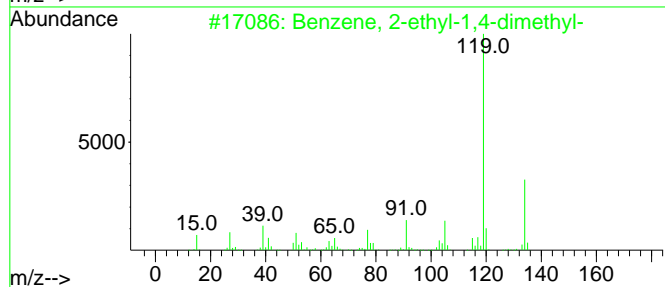
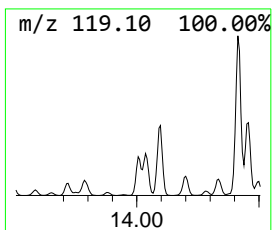
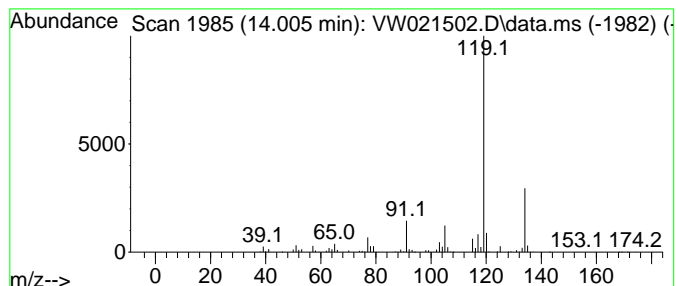
Quant Method : Z:\voasrv\HPCHEM1\MSVOA_W\Method\SFAMWLM120921SMA.M
 Quant Title : SFAM01.0

TIC Library : C:\Database\NIST20.L
 TIC Integration Parameters: LSCINT.P

 Peak Number 16 Benzene, 2-ethyl-1,4-dimethyl- Concentration Rank 17

R.T.	EstConc	Area	Relative to ISTD	R.T.
14.005	6.40 ug/L	607576	1,4-Dichlorobenzene-d4	13.554

Hit#	of	5	Tentative ID	MW	MolForm	CAS#	Qual
1			Benzene, 2-ethyl-1,4-dimethyl-	134	C10H14	001758-88-9	97
2			Benzene, 4-ethyl-1,2-dimethyl-	134	C10H14	000934-80-5	95
3			Benzene, 2-ethyl-1,4-dimethyl-	134	C10H14	001758-88-9	95
4			Benzene, 1-ethyl-2,4-dimethyl-	134	C10H14	000874-41-9	94
5			o-Cymene	134	C10H14	000527-84-4	94



Data Path : Z:\voasrv\HPCHEM1\MSVOA_W\Data\VW122021\
 Data File : VW021502.D
 Acq On : 20 Dec 2021 16:48
 Operator : SY/VA
 Sample : M5171-13
 Misc : 6.35g/10.0mL/MSVOA_W/SOIL
 ALS Vial : 15 Sample Multiplier: 1

Instrument :
 MSVOA_W
 ClientSampleId :
 BGLA9

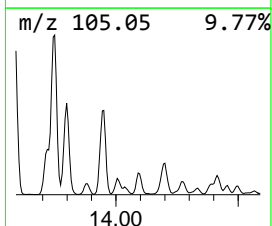
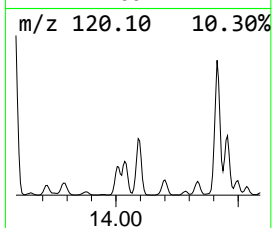
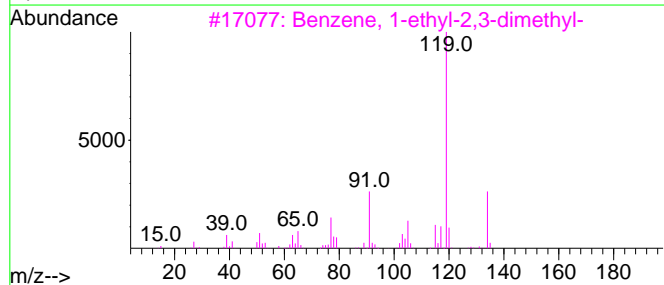
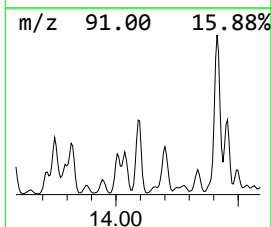
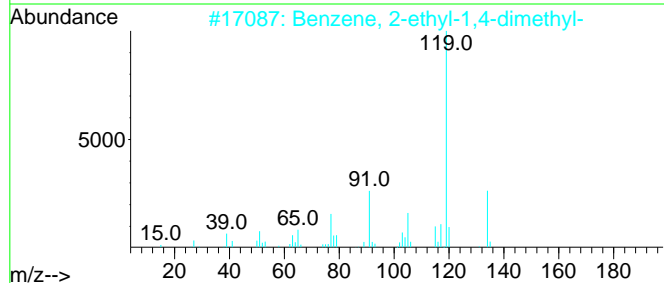
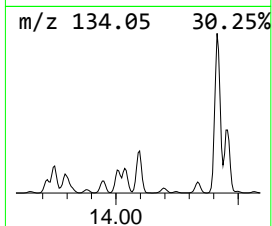
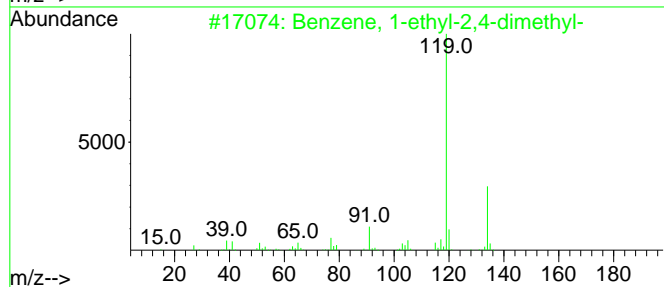
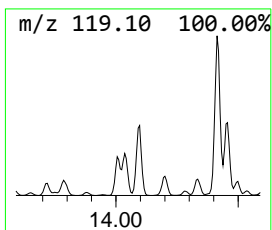
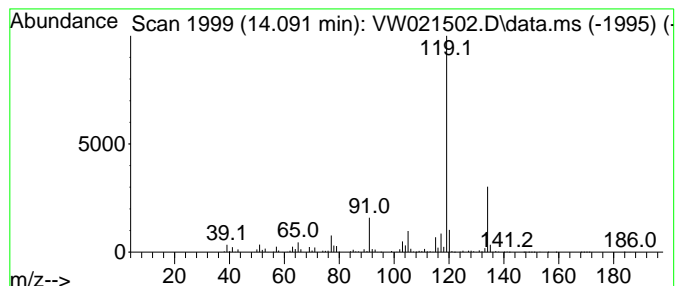
Quant Method : Z:\voasrv\HPCHEM1\MSVOA_W\Method\SFAMWLM120921SMA.M
 Quant Title : SFAM01.0

TIC Library : C:\Database\NIST20.L
 TIC Integration Parameters: LSCINT.P

 Peak Number 17 Benzene, 1-ethyl-2,4-dimethyl- Concentration Rank 7

R.T.	EstConc	Area	Relative to ISTD	R.T.
14.091	15.67 ug/L	1488130	1,4-Dichlorobenzene-d4	13.554

Hit#	of 5	Tentative ID	MW	MolForm	CAS#	Qual
1		Benzene, 1-ethyl-2,4-dimethyl-	134	C10H14	000874-41-9	97
2		Benzene, 2-ethyl-1,4-dimethyl-	134	C10H14	001758-88-9	96
3		Benzene, 1-ethyl-2,3-dimethyl-	134	C10H14	000933-98-2	96
4		Benzene, 4-ethyl-1,2-dimethyl-	134	C10H14	000934-80-5	96
5		Benzene, 2-ethyl-1,3-dimethyl-	134	C10H14	002870-04-4	95



Data Path : Z:\voasrv\HPCHEM1\MSVOA_W\Data\VW122021\
 Data File : VW021502.D
 Acq On : 20 Dec 2021 16:48
 Operator : SY/VA
 Sample : M5171-13
 Misc : 6.35g/10.0mL/MSVOA_W/SOIL
 ALS Vial : 15 Sample Multiplier: 1

Instrument :
 MSVOA_W
 ClientSampleId :
 BGLA9

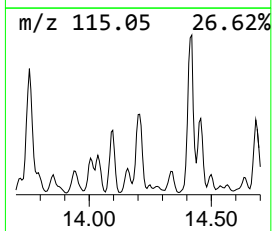
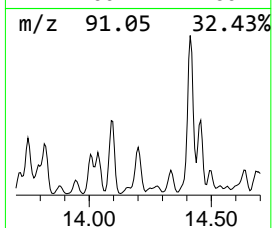
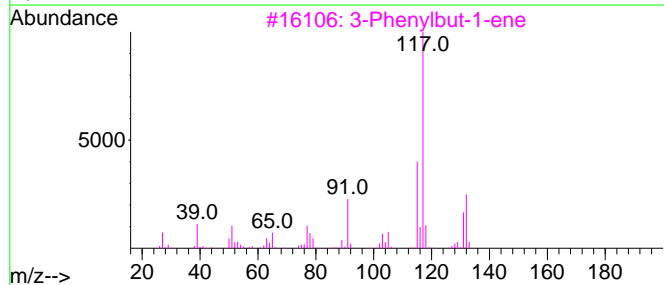
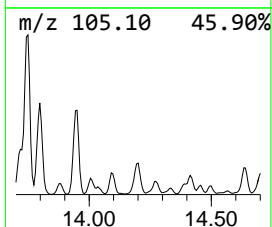
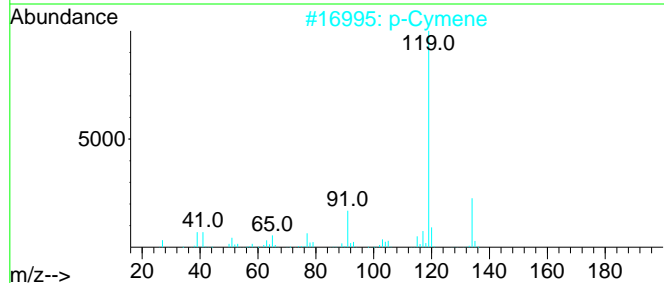
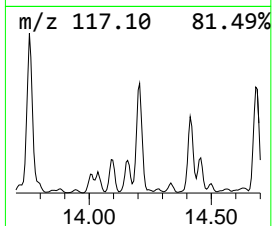
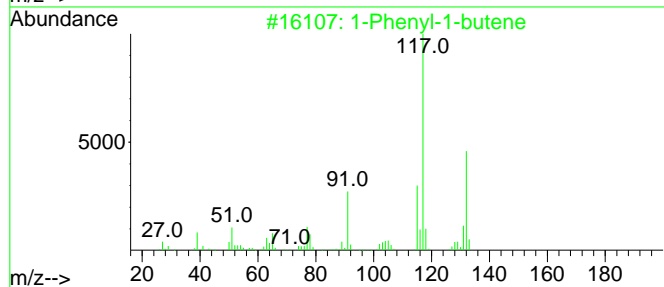
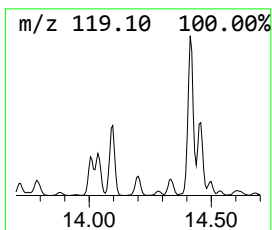
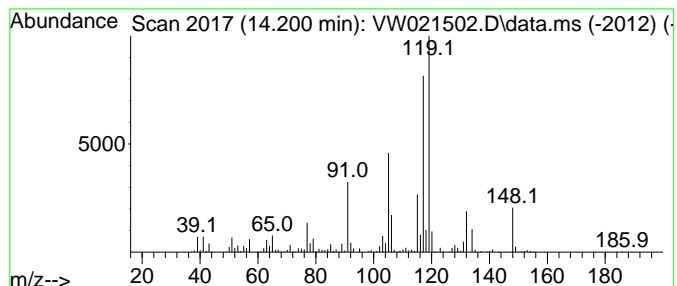
Quant Method : Z:\voasrv\HPCHEM1\MSVOA_W\Method\SFAMWLM120921SMA.M
 Quant Title : SFAM01.0

TIC Library : C:\Database\NIST20.L
 TIC Integration Parameters: LSCINT.P

 Peak Number 18 1-Phenyl-1-butene Concentration Rank 11

R.T.	EstConc	Area	Relative to ISTD	R.T.
14.200	10.72 ug/L	1018150	1,4-Dichlorobenzene-d4	13.554

Hit#	of 5	Tentative ID	MW	MolForm	CAS#	Qual
1		1-Phenyl-1-butene	132	C10H12	000824-90-8	50
2		p-Cymene	134	C10H14	000099-87-6	46
3		3-Phenylbut-1-ene	132	C10H12	000934-10-1	46
4		p-Cymene	134	C10H14	000099-87-6	46
5		Benzene, 2-butenyl-	132	C10H12	001560-06-1	46



Data Path : Z:\voasrv\HPCHEM1\MSVOA_W\Data\VW122021\
 Data File : VW021502.D
 Acq On : 20 Dec 2021 16:48
 Operator : SY/VA
 Sample : M5171-13
 Misc : 6.35g/10.0mL/MSVOA_W/SOIL
 ALS Vial : 15 Sample Multiplier: 1

Instrument :
 MSVOA_W
 ClientSampleId :
 BGLA9

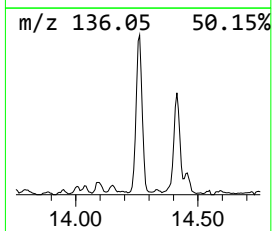
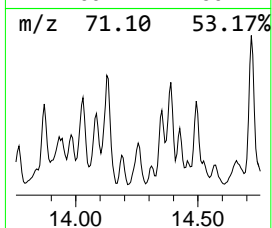
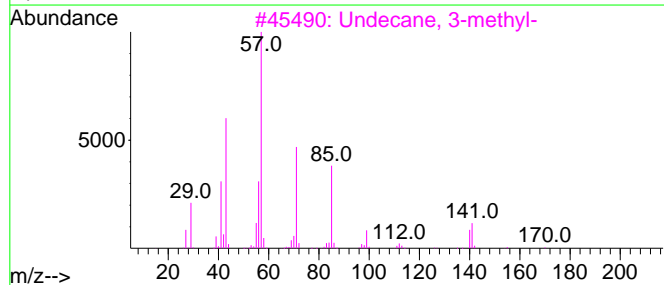
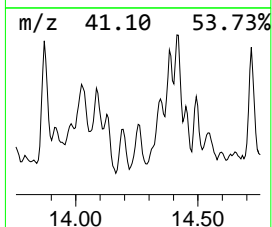
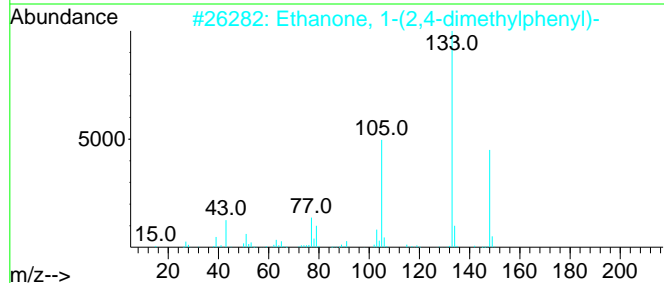
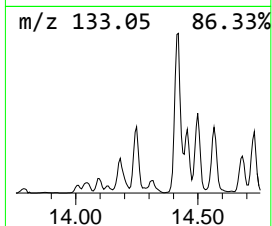
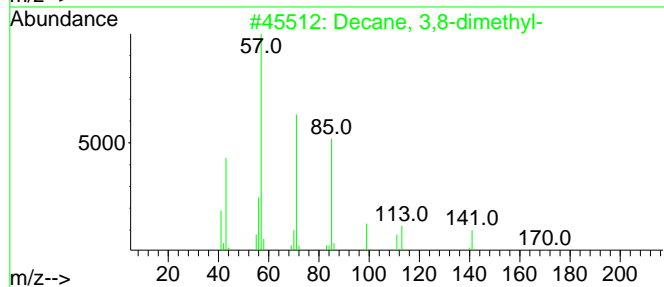
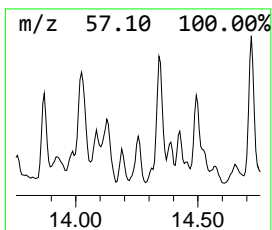
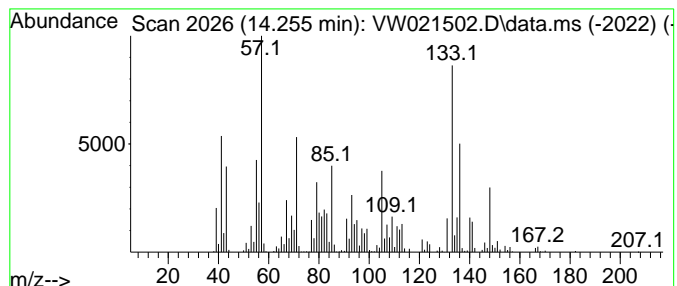
Quant Method : Z:\voasrv\HPCHEM1\MSVOA_W\Method\SFAMWLM120921SMA.M
 Quant Title : SFAM01.0

TIC Library : C:\Database\NIST0.L
 TIC Integration Parameters: LSCINT.P

 Peak Number 19 (DEL) Alkane: Straight-Chai... Concentration Rank 24

R.T.	EstConc	Area	Relative to ISTD	R.T.
14.255	4.46 ug/L	423298	1,4-Dichlorobenzene-d4	13.554

Hit#	of	5	Tentative ID	MW	MolForm	CAS#	Qual
1			Decane, 3,8-dimethyl-	170	C12H26	017312-55-9	70
2			Ethanone, 1-(2,4-dimethylphenyl)-	148	C10H12O	000089-74-7	38
3			Undecane, 3-methyl-	170	C12H26	001002-43-3	30
4			Ethanone, 1-(3,4-dimethylphenyl)-	148	C10H12O	003637-01-2	30
5			Benzene, 1-(1,1-dimethylethyl)-3...	148	C11H16	001075-38-3	25



Data Path : Z:\voasrv\HPCHEM1\MSVOA_W\Data\VW122021\
 Data File : VW021502.D
 Acq On : 20 Dec 2021 16:48
 Operator : SY/VA
 Sample : M5171-13
 Misc : 6.35g/10.0mL/MSVOA_W/SOIL
 ALS Vial : 15 Sample Multiplier: 1

Instrument :
 MSVOA_W
 ClientSampleId :
 BGLA9

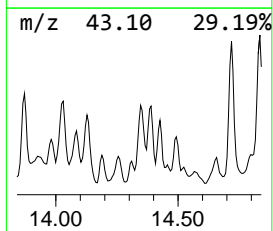
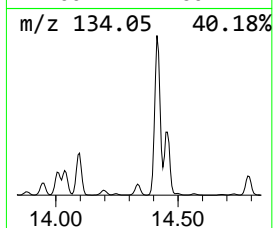
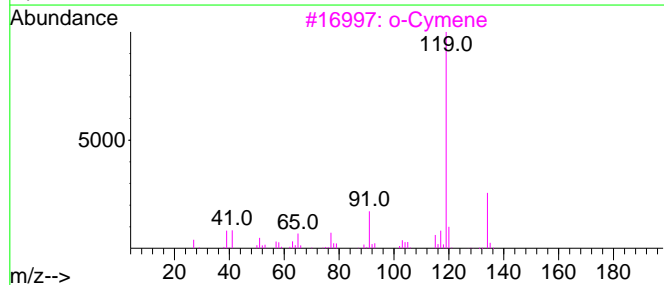
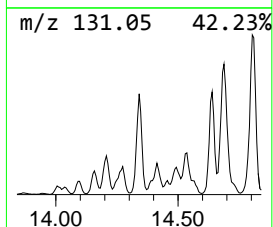
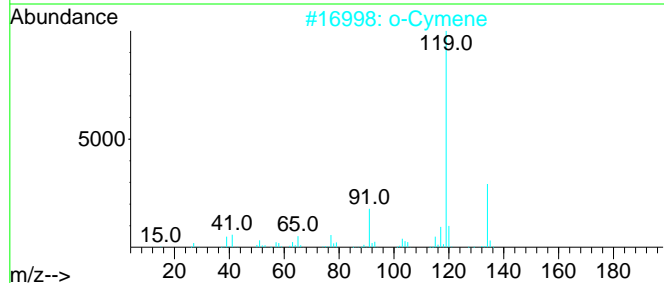
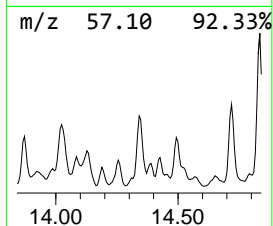
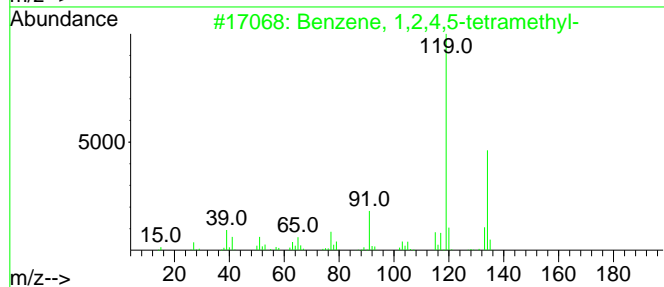
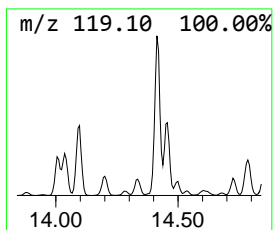
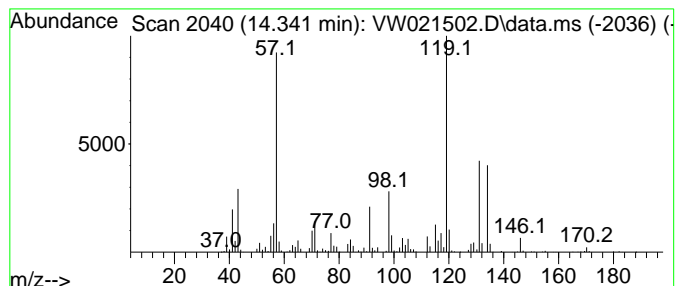
Quant Method : Z:\voasrv\HPCHEM1\MSVOA_W\Method\SFAMWLM120921SMA.M
 Quant Title : SFAM01.0

TIC Library : C:\Database\NIST20.L
 TIC Integration Parameters: LSCINT.P

 Peak Number 20 Benzene, 1,2,4,5-tetramethyl- Concentration Rank 16

R.T.	EstConc	Area	Relative to ISTD	R.T.
14.341	7.01 ug/L	665946	1,4-Dichlorobenzene-d4	13.554

Hit#	of	5	Tentative ID	MW	MolForm	CAS#	Qual
1			Benzene, 1,2,4,5-tetramethyl-	134	C10H14	000095-93-2	90
2			o-Cymene	134	C10H14	000527-84-4	90
3			o-Cymene	134	C10H14	000527-84-4	60
4			Benzene, 1,2,3,5-tetramethyl-	134	C10H14	000527-53-7	60
5			Benzene, 2-ethyl-1,3-dimethyl-	134	C10H14	002870-04-4	60



Data Path : Z:\voasrv\HPCHEM1\MSVOA_W\Data\VW122021\
 Data File : VW021502.D
 Acq On : 20 Dec 2021 16:48
 Operator : SY/VA
 Sample : M5171-13
 Misc : 6.35g/10.0mL/MSVOA_W/SOIL
 ALS Vial : 15 Sample Multiplier: 1

Instrument :
 MSVOA_W
 ClientSampleId :
 BGLA9

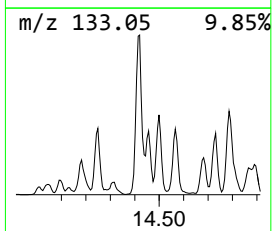
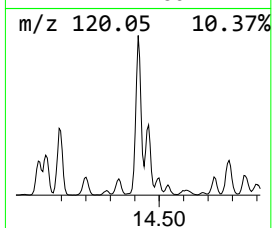
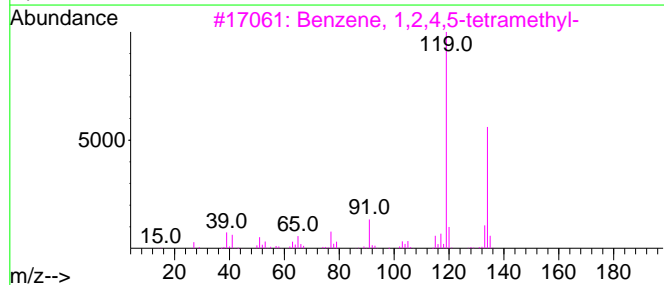
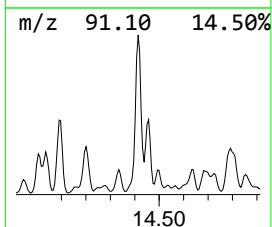
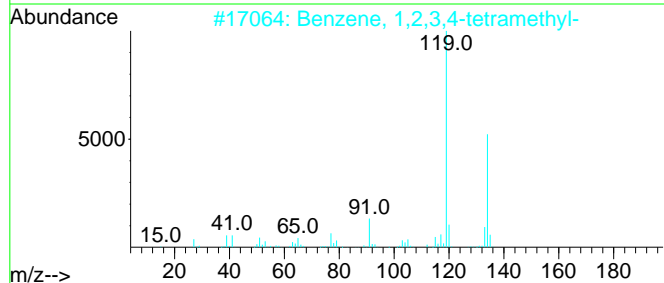
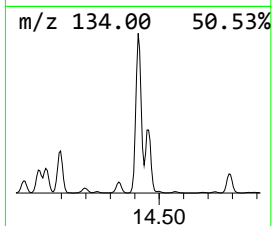
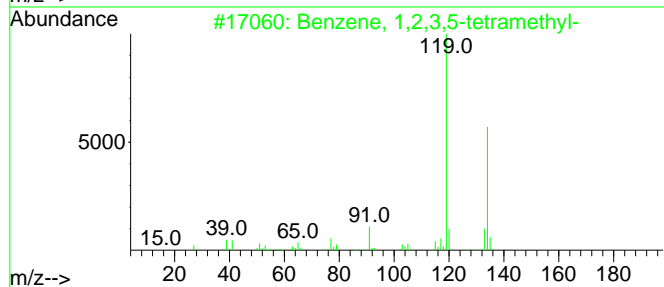
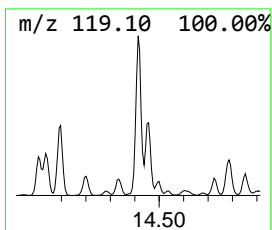
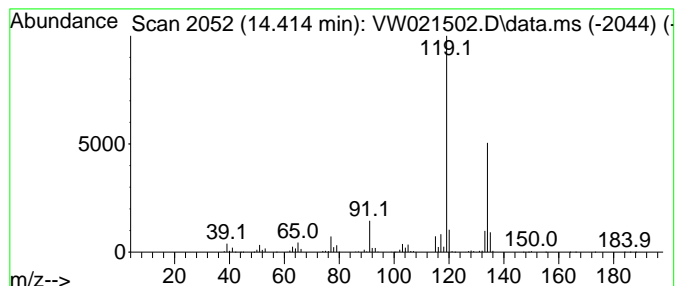
Quant Method : Z:\voasrv\HPCHEM1\MSVOA_W\Method\SFAMWLM120921SMA.M
 Quant Title : SFAM01.0

TIC Library : C:\Database\NIST20.L
 TIC Integration Parameters: LSCINT.P

 Peak Number 21 Benzene, 1,2,3,5-tetramethyl- Concentration Rank 3

R.T.	EstConc	Area	Relative to ISTD	R.T.
14.414	50.09 ug/L	4758260	1,4-Dichlorobenzene-d4	13.554

Hit#	of	5	Tentative ID	MW	MolForm	CAS#	Qual
1			Benzene, 1,2,3,5-tetramethyl-	134	C10H14	000527-53-7	97
2			Benzene, 1,2,3,4-tetramethyl-	134	C10H14	000488-23-3	97
3			Benzene, 1,2,4,5-tetramethyl-	134	C10H14	000095-93-2	97
4			Benzene, 1,2,3,4-tetramethyl-	134	C10H14	000488-23-3	97
5			Benzene, 1,2,3,5-tetramethyl-	134	C10H14	000527-53-7	97



Data Path : Z:\voasrv\HPCHEM1\MSVOA_W\Data\VW122021\
 Data File : VW021502.D
 Acq On : 20 Dec 2021 16:48
 Operator : SY/VA
 Sample : M5171-13
 Misc : 6.35g/10.0mL/MSVOA_W/SOIL
 ALS Vial : 15 Sample Multiplier: 1

Instrument :
 MSVOA_W
 ClientSampleId :
 BGLA9

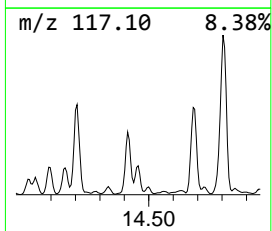
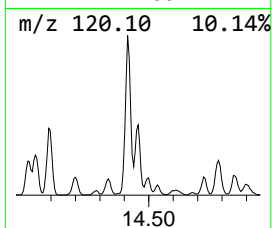
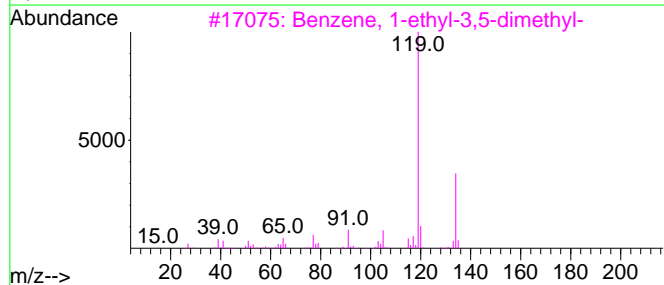
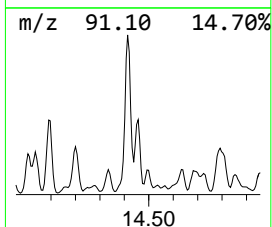
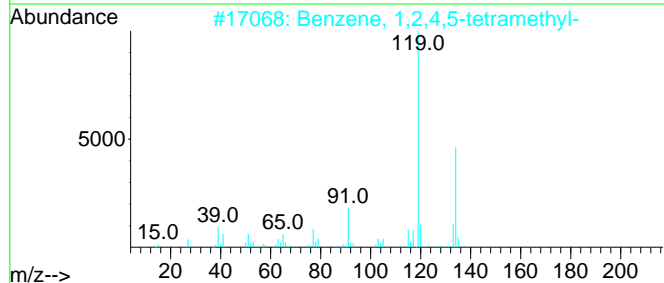
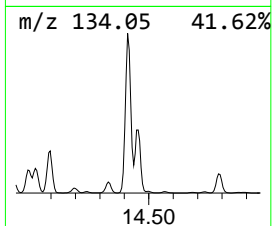
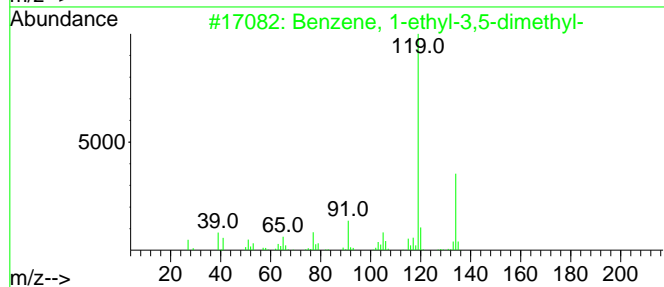
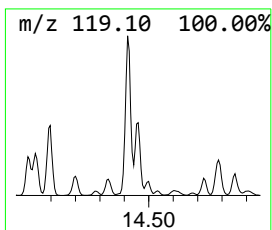
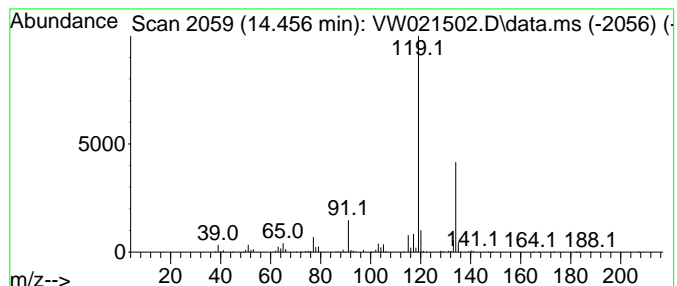
Quant Method : Z:\voasrv\HPCHEM1\MSVOA_W\Method\SFAMWLM120921SMA.M
 Quant Title : SFAM01.0

TIC Library : C:\Database\NIST20.L
 TIC Integration Parameters: LSCINT.P

 Peak Number 22 Benzene, 1-ethyl-3,5-dimethyl- Concentration Rank 8

R.T.	EstConc	Area	Relative to ISTD	R.T.
14.456	15.23 ug/L	1446860	1,4-Dichlorobenzene-d4	13.554

Hit#	of 5	Tentative ID	MW	MolForm	CAS#	Qual
1		Benzene, 1-ethyl-3,5-dimethyl-	134	C10H14	000934-74-7	94
2		Benzene, 1,2,4,5-tetramethyl-	134	C10H14	000095-93-2	94
3		Benzene, 1-ethyl-3,5-dimethyl-	134	C10H14	000934-74-7	94
4		Benzene, 2-ethyl-1,4-dimethyl-	134	C10H14	001758-88-9	94
5		Benzene, 1-ethyl-3,5-dimethyl-	134	C10H14	000934-74-7	91



Data Path : Z:\voasrv\HPCHEM1\MSVOA_W\Data\VW122021\
 Data File : VW021502.D
 Acq On : 20 Dec 2021 16:48
 Operator : SY/VA
 Sample : M5171-13
 Misc : 6.35g/10.0mL/MSVOA_W/SOIL
 ALS Vial : 15 Sample Multiplier: 1

Instrument :
 MSVOA_W
 ClientSampleId :
 BGLA9

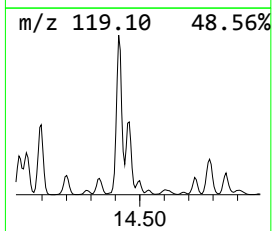
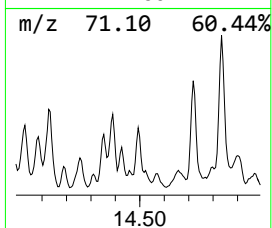
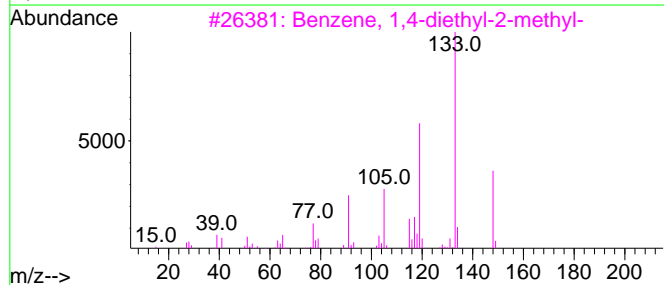
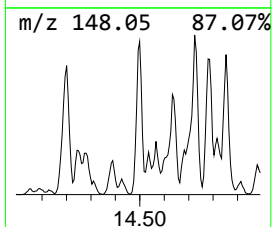
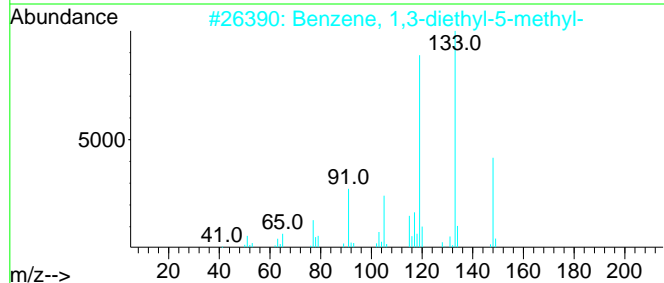
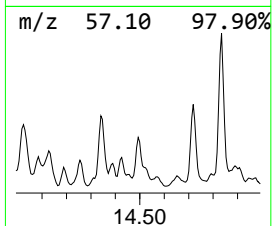
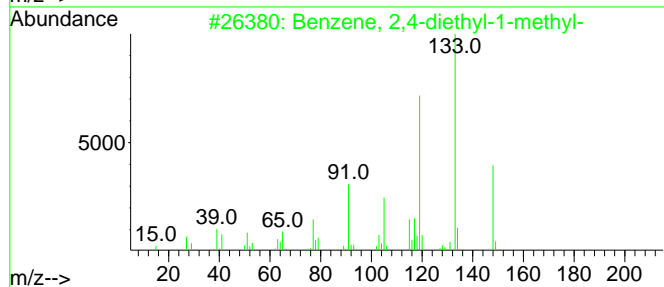
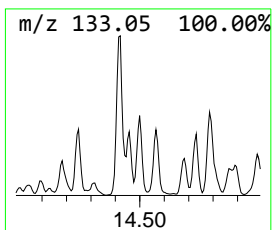
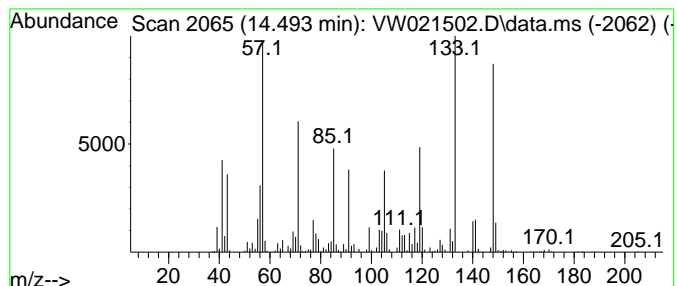
Quant Method : Z:\voasrv\HPCHEM1\MSVOA_W\Method\SFAMWLM120921SMA.M
 Quant Title : SFAM01.0

TIC Library : C:\Database\NIST20.L
 TIC Integration Parameters: LSCINT.P

 Peak Number 23 Benzene, 2,4-diethyl-1-methyl- Concentration Rank 22

R.T.	EstConc	Area	Relative to ISTD	R.T.
14.493	4.95 ug/L	470384	1,4-Dichlorobenzene-d4	13.554

Hit#	of	5	Tentative ID	MW	MolForm	CAS#	Qual
1			Benzene, 2,4-diethyl-1-methyl-	148	C11H16	001758-85-6	64
2			Benzene, 1,3-diethyl-5-methyl-	148	C11H16	002050-24-0	58
3			Benzene, 1,4-diethyl-2-methyl-	148	C11H16	013632-94-5	52
4			3,4-Dimethylcumene	148	C11H16	1000370-34-1	49
5			Decane, 3,8-dimethyl-	170	C12H26	017312-55-9	44



Data Path : Z:\voasrv\HPCHEM1\MSVOA_W\Data\VW122021\
 Data File : VW021502.D
 Acq On : 20 Dec 2021 16:48
 Operator : SY/VA
 Sample : M5171-13
 Misc : 6.35g/10.0mL/MSVOA_W/SOIL
 ALS Vial : 15 Sample Multiplier: 1

Instrument :
 MSVOA_W
 ClientSampleId :
 BGLA9

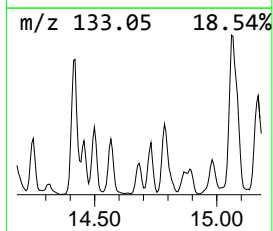
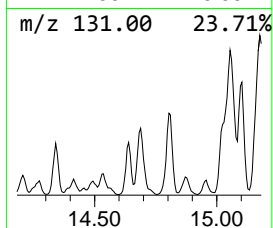
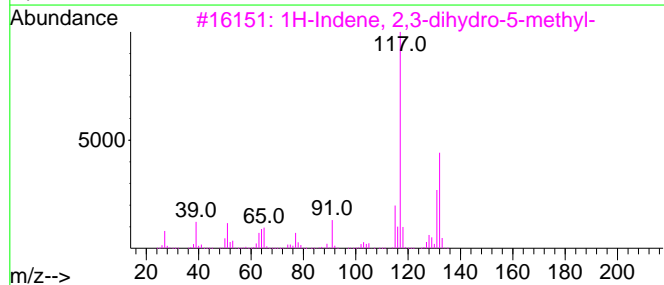
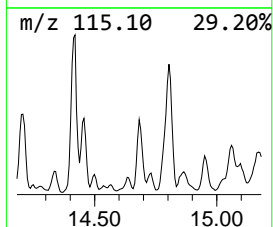
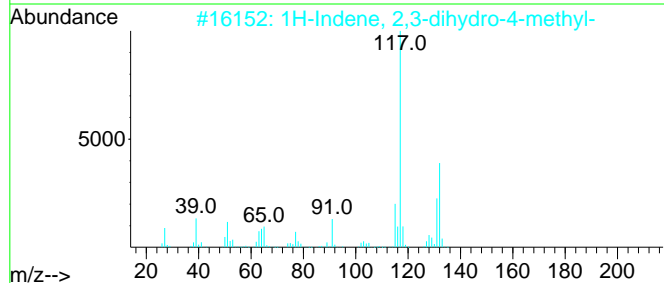
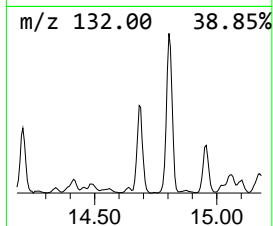
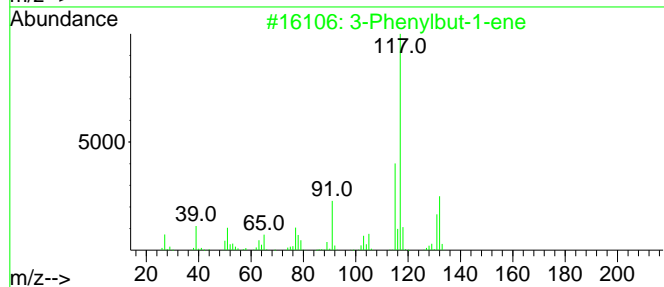
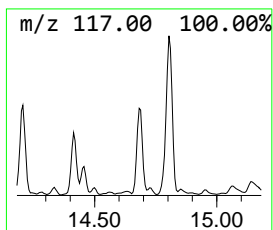
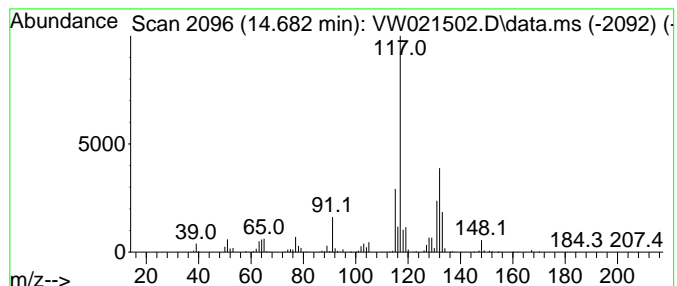
Quant Method : Z:\voasrv\HPCHEM1\MSVOA_W\Method\SFAMWLM120921SMA.M
 Quant Title : SFAM01.0

TIC Library : C:\Database\NIST20.L
 TIC Integration Parameters: LSCINT.P

 Peak Number 24 3-Phenylbut-1-ene Concentration Rank 19

R.T.	EstConc	Area	Relative to ISTD	R.T.
14.682	5.95 ug/L	565441	1,4-Dichlorobenzene-d4	13.554

Hit#	of	5	Tentative ID	MW	MolForm	CAS#	Qual
1			3-Phenylbut-1-ene	132	C10H12	000934-10-1	90
2			1H-Indene, 2,3-dihydro-4-methyl-	132	C10H12	000824-22-6	87
3			1H-Indene, 2,3-dihydro-5-methyl-	132	C10H12	000874-35-1	87
4			Benzene, 2-ethenyl-1,3-dimethyl-	132	C10H12	002039-90-9	83
5			Benzene, (1-methyl-1-propenyl)-,...	132	C10H12	000768-00-3	83



Data Path : Z:\voasrv\HPCHEM1\MSVOA_W\Data\VW122021\
 Data File : VW021502.D
 Acq On : 20 Dec 2021 16:48
 Operator : SY/VA
 Sample : M5171-13
 Misc : 6.35g/10.0mL/MSVOA_W/SOIL
 ALS Vial : 15 Sample Multiplier: 1

Instrument :
 MSVOA_W
 ClientSampleId :
 BGLA9

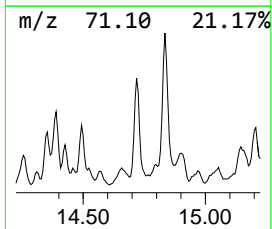
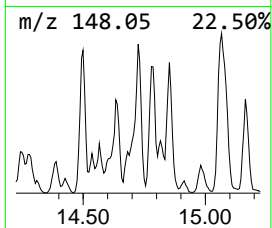
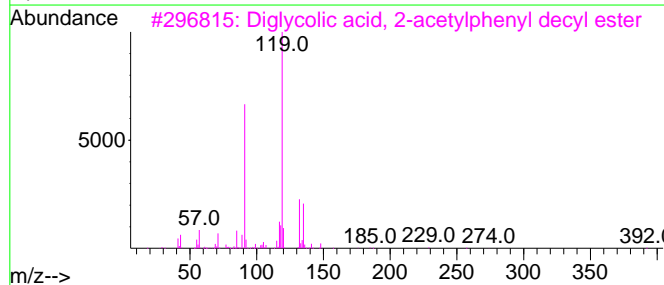
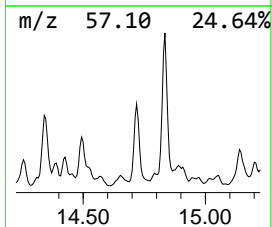
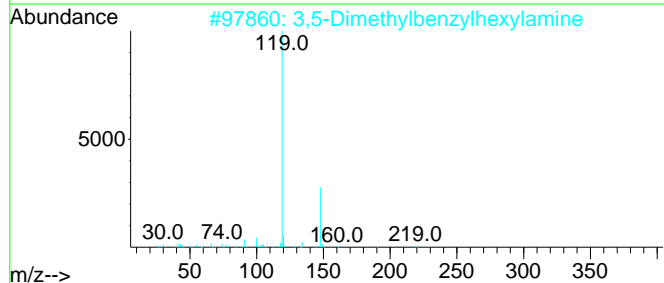
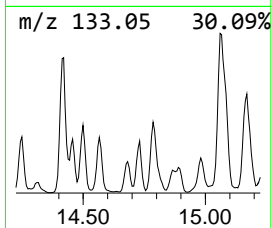
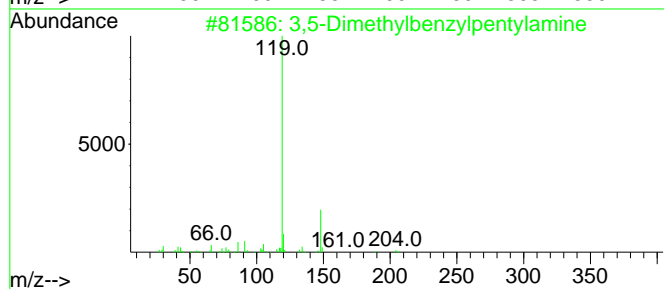
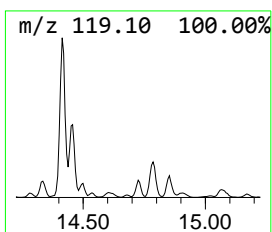
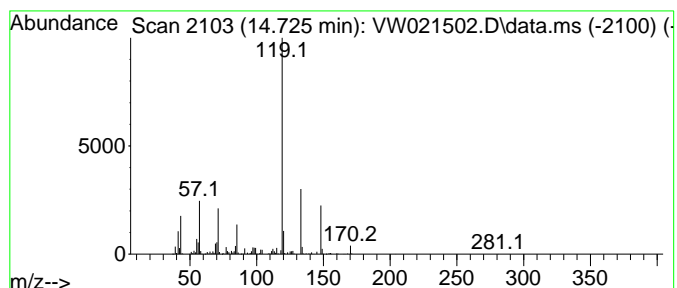
Quant Method : Z:\voasrv\HPCHEM1\MSVOA_W\Method\SFAMWLM120921SMA.M
 Quant Title : SFAM01.0

TIC Library : C:\Database\NIST20.L
 TIC Integration Parameters: LSCINT.P

 Peak Number 25 3,5-Dimethylbenzylpentylamine Concentration Rank 14

R.T.	EstConc	Area	Relative to ISTD	R.T.
14.725	7.86 ug/L	746575	1,4-Dichlorobenzene-d4	13.554

Hit#	of	5	Tentative ID	MW	MolForm	CAS#	Qual
1			3,5-Dimethylbenzylpentylamine	205	C14H23N	1000491-60-8	50
2			3,5-Dimethylbenzylhexylamine	219	C15H25N	1000491-60-9	50
3			Diglycolic acid, 2-acetylphenyl ...	392	C22H32O6	1000382-72-6	47
4			2-Propenal, 3-(2-pyridinylamino)-	148	C8H8N2O	068970-82-1	40
5			p-Toluic acid, 3,5-difluoropheny...	248	C14H10F2O2	1000292-64-0	38



Data Path : Z:\voasrv\HPCHEM1\MSVOA_W\Data\VW122021\
 Data File : VW021502.D
 Acq On : 20 Dec 2021 16:48
 Operator : SY/VA
 Sample : M5171-13
 Misc : 6.35g/10.0mL/MSVOA_W/SOIL
 ALS Vial : 15 Sample Multiplier: 1

Instrument :
 MSVOA_W
 ClientSampleId :
 BGLA9

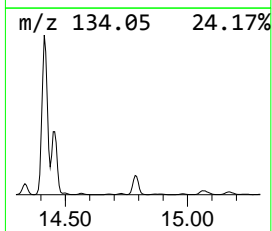
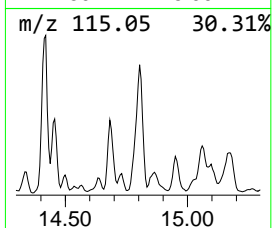
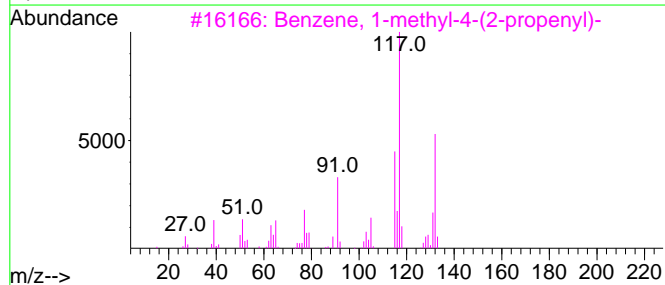
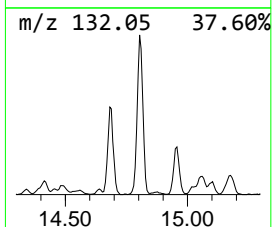
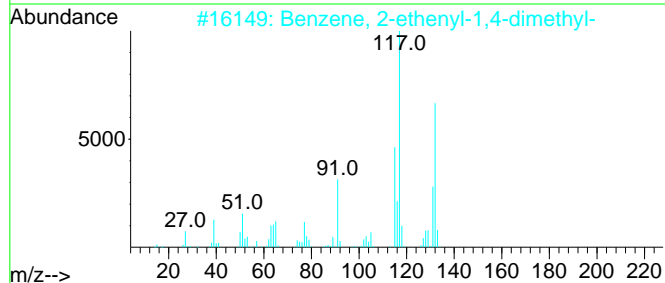
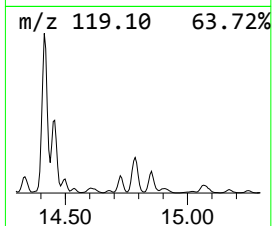
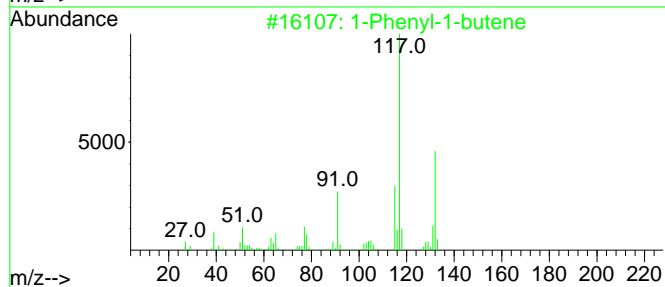
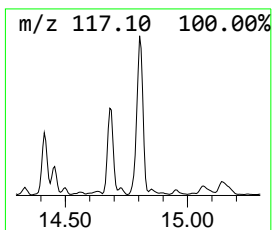
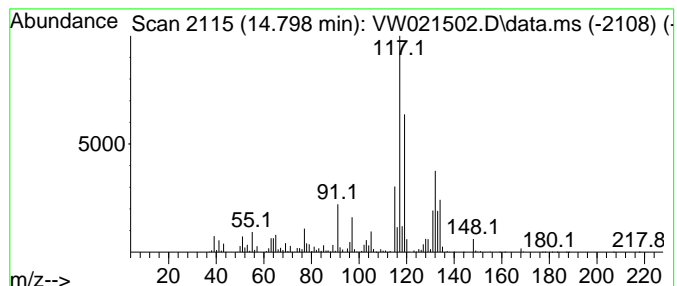
Quant Method : Z:\voasrv\HPCHEM1\MSVOA_W\Method\SFAMWLM120921SMA.M
 Quant Title : SFAM01.0

TIC Library : C:\Database\NIST20.L
 TIC Integration Parameters: LSCINT.P

 Peak Number 26 Benzene, 2-ethenyl-1,4-dime... Concentration Rank 4

R.T.	EstConc	Area	Relative to ISTD	R.T.
14.798	24.23 ug/L	2302070	1,4-Dichlorobenzene-d4	13.554

Hit#	of 5	Tentative ID	MW	MolForm	CAS#	Qual
1		1-Phenyl-1-butene	132	C10H12	000824-90-8	90
2		Benzene, 2-ethenyl-1,4-dimethyl-	132	C10H12	002039-89-6	86
3		Benzene, 1-methyl-4-(2-propenyl)-	132	C10H12	003333-13-9	83
4		3-Phenylbut-1-ene	132	C10H12	000934-10-1	64
5		Benzene, (1-methyl-1-propenyl)-,...	132	C10H12	000768-00-3	64



Data Path : Z:\voasrv\HPCHEM1\MSVOA_W\Data\VW122021\
 Data File : VW021502.D
 Acq On : 20 Dec 2021 16:48
 Operator : SY/VA
 Sample : M5171-13
 Misc : 6.35g/10.0mL/MSVOA_W/SOIL
 ALS Vial : 15 Sample Multiplier: 1

Instrument :
 MSVOA_W
 ClientSampleId :
 BGLA9

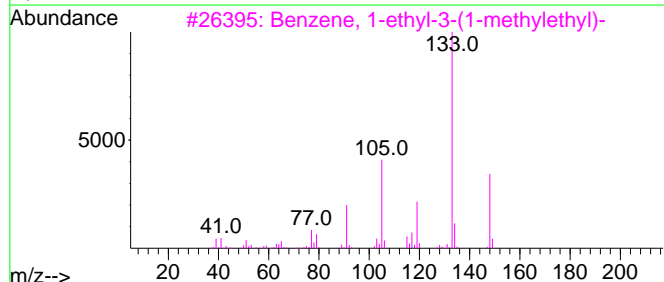
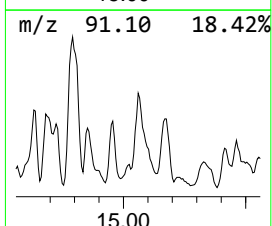
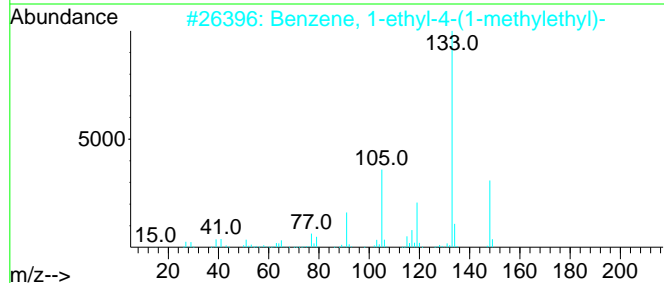
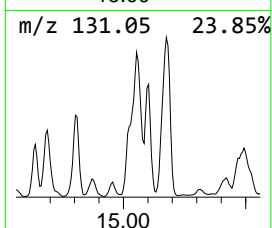
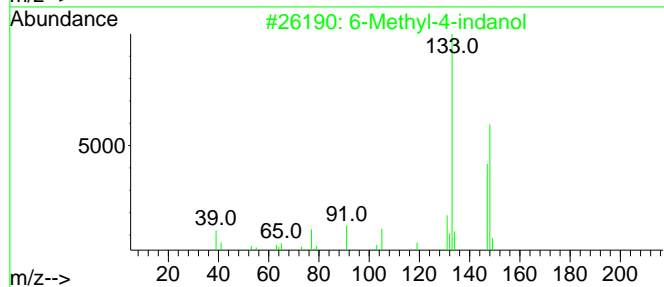
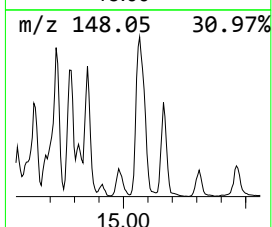
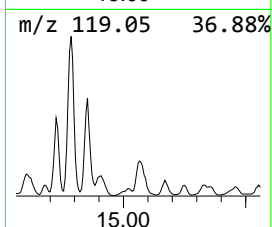
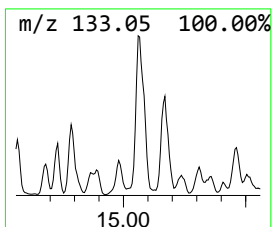
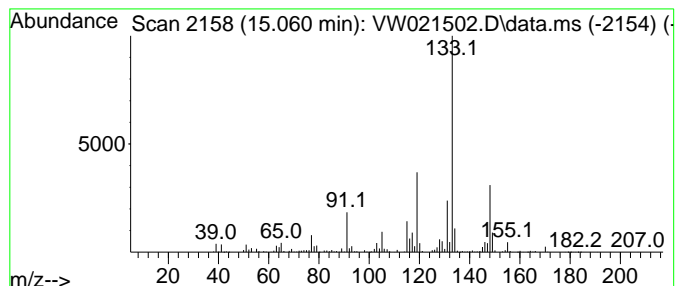
Quant Method : Z:\voasrv\HPCHEM1\MSVOA_W\Method\SFAMWLM120921SMA.M
 Quant Title : SFAM01.0

TIC Library : C:\Database\NIST20.L
 TIC Integration Parameters: LSCINT.P

 Peak Number 27 6-Methyl-4-indanol Concentration Rank 13

R.T.	EstConc	Area	Relative to ISTD	R.T.
15.060	8.96 ug/L	851182	1,4-Dichlorobenzene-d4	13.554

Hit#	of	5	Tentative ID	MW	MolForm	CAS#	Qual
1			6-Methyl-4-indanol	148	C10H12O	020294-32-0	72
2			Benzene, 1-ethyl-4-(1-methylethyl)-	148	C11H16	004218-48-8	72
3			Benzene, 1-ethyl-3-(1-methylethyl)-	148	C11H16	004920-99-4	64
4			4-tert-Butyltoluene	148	C11H16	000098-51-1	64
5			Benzene, pentamethyl-	148	C11H16	000700-12-9	62



Data Path : Z:\voasrv\HPCHEM1\MSVOA_W\Data\VW122021\
 Data File : VW021502.D
 Acq On : 20 Dec 2021 16:48
 Operator : SY/VA
 Sample : M5171-13
 Misc : 6.35g/10.0mL/MSVOA_W/SOIL
 ALS Vial : 15 Sample Multiplier: 1

Instrument :
 MSVOA_W
 ClientSampleId :
 BGLA9

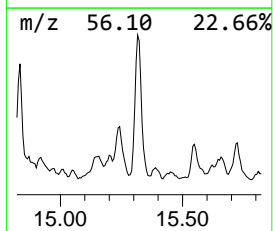
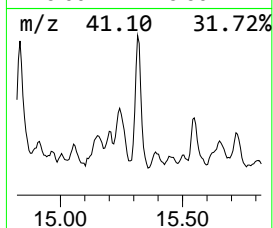
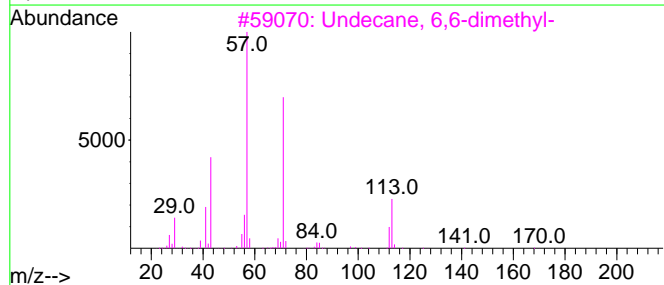
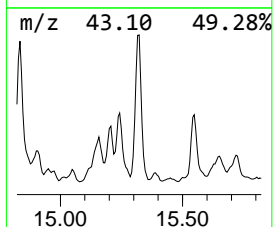
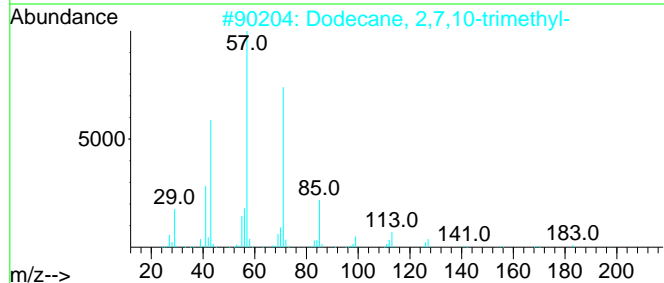
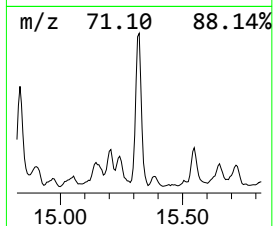
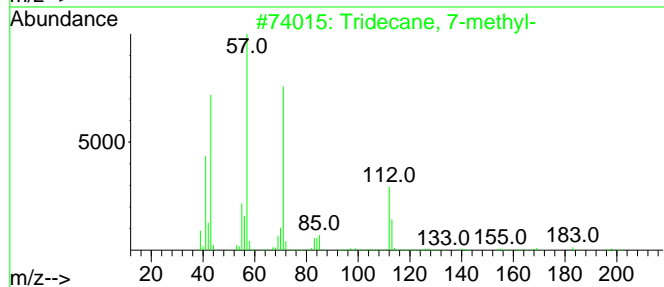
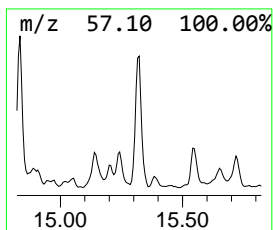
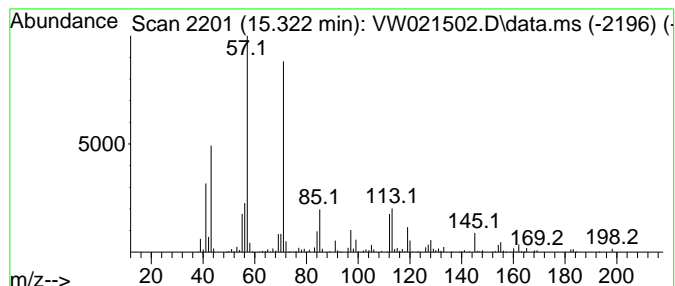
Quant Method : Z:\voasrv\HPCHEM1\MSVOA_W\Method\SFAMWLM120921SMA.M
 Quant Title : SFAM01.0

TIC Library : C:\Database\NIST20.L
 TIC Integration Parameters: LSCINT.P

 Peak Number 28 (DEL) Alkane: Straight-Chai... Concentration Rank 12

R.T.	EstConc	Area	Relative to ISTD	R.T.
15.322	10.17 ug/L	965981	1,4-Dichlorobenzene-d4	13.554

Hit#	of 5	Tentative ID	MW	MolForm	CAS#	Qual
1		Tridecane, 7-methyl-	198	C14H30	026730-14-3	68
2		Dodecane, 2,7,10-trimethyl-	212	C15H32	074645-98-0	64
3		Undecane, 6,6-dimethyl-	184	C13H28	017312-76-4	53
4		Undecane, 4,6-dimethyl-	184	C13H28	017312-82-2	52
5		Oxalic acid, bis(2-ethylhexyl) e...	314	C18H34O4	1000309-39-0	50



Data Path : Z:\voasrv\HPCHEM1\MSVOA_W\Data\VW122021\
 Data File : VW021502.D
 Acq On : 20 Dec 2021 16:48
 Operator : SY/VA
 Sample : M5171-13
 Misc : 6.35g/10.0mL/MSVOA_W/SOIL
 ALS Vial : 15 Sample Multiplier: 1

Instrument :
 MSVOA_W
 ClientSampleId :
 BGLA9

Quant Method : Z:\voasrv\HPCHEM1\MSVOA_W\Method\SFAMWLM120921SMA.M
 Quant Title : SFAM01.0

TIC Library : C:\Database\NIST0.L
 TIC Integration Parameters: LSCINT.P

TIC Top Hit name	RT	EstConc	Units	Response	--Internal Standard--			
					#	RT	Resp	Conc
(DEL) Alkane: S...	11.512	2.3	ug/L	29145	2	11.628	317498	25.0
(DEL) Alkane: S...	12.054	1.7	ug/L	21087	2	11.628	317498	25.0
(DEL) Alkane: S...	12.249	5.9	ug/L	74505	2	11.628	317498	25.0
(DEL) Alkane: S...	12.365	21.4	ug/L	271600	2	11.628	317498	25.0
1,5-Cyclooctadiene	12.560	67.0	ug/L	851209	2	11.628	317498	25.0
Benzene, propyl-	12.798	2.7	ug/L	260734	3	13.554	2374800	25.0
Benzene, 1-ethy...	12.865	5.5	ug/L	522947	3	13.554	2374800	25.0
Benzene, 1-ethy...	13.103	15.1	ug/L	1434910	3	13.554	2374800	25.0
(DEL) Alkane: S...	13.164	4.5	ug/L	424790	3	13.554	2374800	25.0
Benzene, 1,3-di...	13.719	4.2	ug/L	403203	3	13.554	2374800	25.0
Benzene, 1,1'-(...	13.749	15.0	ug/L	1426350	3	13.554	2374800	25.0
Benzene, 1-meth...	13.792	6.3	ug/L	602328	3	13.554	2374800	25.0
Benzene, (1-met...	13.944	3.0	ug/L	286097	3	13.554	2374800	25.0
Benzene, 2-ethy...	14.005	6.4	ug/L	607576	3	13.554	2374800	25.0
Benzene, 1-ethy...	14.091	15.7	ug/L	1488130	3	13.554	2374800	25.0
1-Phenyl-1-butene	14.200	10.7	ug/L	1018150	3	13.554	2374800	25.0
(DEL) Alkane: S...	14.255	4.5	ug/L	423298	3	13.554	2374800	25.0
Benzene, 1,2,4,...	14.341	7.0	ug/L	665946	3	13.554	2374800	25.0
Benzene, 1,2,3,...	14.414	50.1	ug/L	4758260	3	13.554	2374800	25.0
Benzene, 1-ethy...	14.456	15.2	ug/L	1446860	3	13.554	2374800	25.0
Benzene, 2,4-di...	14.493	5.0	ug/L	470384	3	13.554	2374800	25.0
3-Phenylbut-1-ene	14.682	6.0	ug/L	565441	3	13.554	2374800	25.0
3,5-Dimethylben...	14.725	7.9	ug/L	746575	3	13.554	2374800	25.0
Benzene, 2-ethe...	14.798	24.2	ug/L	2302070	3	13.554	2374800	25.0
6-Methyl-4-indanol	15.060	9.0	ug/L	851182	3	13.554	2374800	25.0
(DEL) Alkane: S...	15.322	10.2	ug/L	965981	3	13.554	2374800	25.0