

Data Path : Z:\voasrv\HPCHEM1\MSVOA_W\Data\VW122021\
 Data File : VW021505.D
 Acq On : 20 Dec 2021 18:00
 Operator : SY/VA
 Sample : M5171-05
 Misc : 6.42g/10.0mL/MSVOA_W/SOIL
 ALS Vial : 18 Sample Multiplier: 1

Instrument :
 MSVOA_W
 ClientSampleId :
 BGLA1

Integration Parameters: LSCINT.P

Integrator: RTE
 Smoothing : OFF Filtering: 5
 Sampling : 1 Min Area: 0 % of largest Peak
 Start Thrs: 0.2 Max Peaks: 100
 Stop Thrs : 0 Peak Location: TOP

If leading or trailing edge < 100 prefer < Baseline drop else tangent >
 Peak separation: 5

Method : Z:\voasrv\HPCHEM1\MSVOA_W\Method\SFAMWLM120921SMA.M
 Title : SFAM01.0

Signal : TIC: VW021505.D\data.ms

peak #	R.T. min	first scan	max scan	last scan	PK TY	peak height	corr. area	corr. % max.	% of total
1	2.154	37	41	51	rVB4	1053	2734	1.47%	0.249%
2	2.355	70	74	80	rVB3	1787	3028	1.63%	0.275%
3	2.568	107	109	111	rBV	254	230	0.12%	0.021%
4	2.623	115	118	119	rBV2	395	349	0.19%	0.032%
5	2.751	137	139	142	rVB	114	120	0.06%	0.011%
6	2.794	142	146	150	rBV4	260	560	0.30%	0.051%
7	2.885	156	161	169	rVB	1938	3553	1.91%	0.323%
8	2.995	177	179	181	rVV2	218	209	0.11%	0.019%
9	3.038	184	186	187	rVV	234	180	0.10%	0.016%
10	3.087	190	194	195	rBV2	231	273	0.15%	0.025%
11	3.105	195	197	199	rVB2	303	259	0.14%	0.024%
12	3.288	225	227	230	rVB	99	113	0.06%	0.010%
13	3.525	261	266	267	rBV	158	202	0.11%	0.018%
14	3.544	267	269	272	rVB	191	214	0.11%	0.019%
15	4.019	339	347	357	rBV3	3267	8806	4.73%	0.801%
16	4.129	362	365	368	rVV	223	339	0.18%	0.031%
17	4.160	368	370	374	rVB2	155	185	0.10%	0.017%
18	4.806	474	476	478	rVV	106	107	0.06%	0.010%
19	4.848	481	483	484	rBV	140	123	0.07%	0.011%
20	4.922	484	495	505	rVV3	4645	14309	7.68%	1.302%
21	5.068	517	519	522	rVV	114	138	0.07%	0.013%
22	5.141	528	531	532	rBV	161	124	0.07%	0.011%
23	5.239	543	547	550	rBV	97	170	0.09%	0.015%
24	5.293	553	556	558	rBV	136	167	0.09%	0.015%
25	5.464	582	584	588	rBB	143	153	0.08%	0.014%
26	5.495	588	589	592	rBV	131	115	0.06%	0.010%
27	5.525	592	594	597	rVB	103	117	0.06%	0.011%
28	5.586	601	604	605	rBV	83	104	0.06%	0.009%
29	5.732	625	628	630	rBV	162	204	0.11%	0.019%
30	5.897	652	655	657	rVB	115	127	0.07%	0.012%
31	5.927	657	660	662	rBV	185	224	0.12%	0.020%
32	5.995	669	671	673	rBB	152	130	0.07%	0.012%
33	6.019	673	675	678	rBB	151	173	0.09%	0.016%
34	6.074	682	684	688	rVV2	85	148	0.08%	0.013%
35	6.202	703	705	707	rVB	136	115	0.06%	0.010%
36	6.232	707	710	713	rBV	156	198	0.11%	0.018%

Data Path : Z:\voasrv\HPCHEM1\MSVOA_W\Data\VW122021\
 Data File : VW021505.D
 Acq On : 20 Dec 2021 18:00
 Operator : SY/VA
 Sample : M5171-05
 Misc : 6.42g/10.0mL/MSVOA_W/SOIL
 ALS Vial : 18 Sample Multiplier: 1

Instrument :
 MSVOA_W
 ClientSampleId :
 BGLA1

Integration Parameters: LSCINT.P

Integrator: RTE
 Smoothing : OFF Filtering: 5
 Sampling : 1 Min Area: 0 % of largest Peak
 Start Thrs: 0.2 Max Peaks: 100
 Stop Thrs : 0 Peak Location: TOP

If leading or trailing edge < 100 prefer < Baseline drop else tangent >
 Peak separation: 5

Method : Z:\voasrv\HPCHEM1\MSVOA_W\Method\SFAMWLM120921SMA.M
 Title : SFAM01.0

37	6.397	734	737	738	rBV	130	127	0.07%	0.012%
38	6.482	749	751	753	rVB	139	120	0.06%	0.011%
39	6.732	790	792	794	rBV	133	133	0.07%	0.012%
40	6.811	801	805	806	rVB	91	115	0.06%	0.010%
41	7.086	840	850	863	rBV2	3308	11072	5.94%	1.007%
42	7.238	873	875	876	rBV	175	157	0.08%	0.014%
43	7.305	884	886	889	rBV	118	162	0.09%	0.015%
44	7.586	930	932	933	rBB	149	105	0.06%	0.010%
45	7.653	934	943	952	rBB	11996	29454	15.81%	2.679%
46	7.793	963	966	967	rBV	130	125	0.07%	0.011%
47	7.872	976	979	982	rBB	156	185	0.10%	0.017%
48	7.945	986	991	992	rBB	137	184	0.10%	0.017%
49	7.958	992	993	996	rBB	126	107	0.06%	0.010%
50	8.043	1003	1007	1009	rBV2	148	244	0.13%	0.022%
51	8.189	1028	1031	1034	rBV	87	162	0.09%	0.015%
52	8.281	1037	1046	1060	rBV2	20997	74537	40.01%	6.781%
53	8.744	1121	1122	1125	rVB	147	118	0.06%	0.011%
54	8.842	1129	1138	1146	rBV	22093	43888	23.56%	3.993%
55	9.189	1193	1195	1198	rBV	160	189	0.10%	0.017%
56	9.274	1202	1209	1219	rVV2	20338	40427	21.70%	3.678%
57	9.402	1228	1230	1232	rVV2	106	104	0.06%	0.009%
58	9.445	1235	1237	1240	rBB	150	141	0.08%	0.013%
59	9.555	1252	1255	1258	rBB	65	104	0.06%	0.009%
60	9.604	1258	1263	1266	rBB	147	236	0.13%	0.021%
61	9.640	1266	1269	1271	rBV	200	211	0.11%	0.019%
62	9.750	1283	1287	1289	rBV	335	307	0.16%	0.028%
63	9.799	1293	1295	1297	rVB	137	110	0.06%	0.010%
64	9.823	1297	1299	1301	rBB	117	107	0.06%	0.010%
65	9.866	1301	1306	1307	rBV	281	331	0.18%	0.030%
66	9.878	1307	1308	1315	rVB	361	694	0.37%	0.063%
67	9.945	1316	1319	1321	rBB2	211	251	0.13%	0.023%
68	9.969	1321	1323	1324	rBV2	228	148	0.08%	0.013%
69	9.982	1324	1325	1327	rVB2	256	117	0.06%	0.011%
70	10.037	1327	1334	1340	rBV2	11228	20421	10.96%	1.858%
71	10.140	1348	1351	1352	rBV	368	313	0.17%	0.028%
72	10.195	1357	1360	1362	rBV	245	313	0.17%	0.028%
73	10.213	1362	1363	1366	rVV3	220	194	0.10%	0.018%
74	10.323	1374	1381	1388	rBV	32067	56123	30.13%	5.106%
75	10.390	1388	1392	1395	rVV2	2182	3540	1.90%	0.322%
76	10.433	1398	1399	1401	rVV	377	305	0.16%	0.028%

Data Path : Z:\voasrv\HPCHEM1\MSVOA_W\Data\VW122021\
 Data File : VW021505.D
 Acq On : 20 Dec 2021 18:00
 Operator : SY/VA
 Sample : M5171-05
 Misc : 6.42g/10.0mL/MSVOA_W/SOIL
 ALS Vial : 18 Sample Multiplier: 1

Instrument :
 MSVOA_W
 ClientSampleId :
 BGLA1

Integration Parameters: LSCINT.P

Integrator: RTE
 Smoothing : OFF Filtering: 5
 Sampling : 1 Min Area: 0 % of largest Peak
 Start Thrs: 0.2 Max Peaks: 100
 Stop Thrs : 0 Peak Location: TOP

If leading or trailing edge < 100 prefer < Baseline drop else tangent >
 Peak separation: 5

Method : Z:\voasrv\HPCHEM1\MSVOA_W\Method\SFAMWLM120921SMA.M
 Title : SFAM01.0

77	10.451	1401	1402	1403	rVV	606	292	0.16%	0.027%
78	10.506	1407	1411	1414	rVV4	463	760	0.41%	0.069%
79	10.536	1414	1416	1417	rVV	146	108	0.06%	0.010%
80	10.579	1417	1423	1431	rVV2	7572	13243	7.11%	1.205%
81	10.646	1431	1434	1435	rVV3	282	307	0.16%	0.028%
82	10.664	1435	1437	1439	rVV3	367	351	0.19%	0.032%
83	10.701	1439	1443	1448	rVB2	1906	3155	1.69%	0.287%
84	10.768	1453	1454	1458	rVB2	381	187	0.10%	0.017%
85	10.799	1458	1459	1461	rBB2	252	128	0.07%	0.012%
86	10.866	1465	1470	1474	rVB4	1266	2065	1.11%	0.188%
87	10.927	1474	1480	1490	rBV	13339	23401	12.56%	2.129%
88	11.286	1538	1539	1541	rVB2	980	527	0.28%	0.048%
89	11.634	1590	1596	1605	rVB	44649	78354	42.06%	7.128%
90	11.731	1607	1612	1619	rVB2	5282	9466	5.08%	0.861%
91	11.835	1624	1629	1639	rBV	17828	34372	18.45%	3.127%
92	12.164	1678	1683	1689	rVB	9391	16101	8.64%	1.465%
93	12.695	1765	1770	1775	rVB	24684	41337	22.19%	3.760%
94	12.865	1794	1798	1801	rBV2	13814	26342	14.14%	2.396%
95	13.249	1857	1861	1865	rBV	20367	32642	17.52%	2.969%
96	13.554	1907	1911	1919	rVB2	51113	91070	48.89%	8.285%
97	13.853	1955	1960	1968	rBV2	44139	101034	54.23%	9.191%
98	15.359	2202	2207	2213	rVB	107377	186293	100.00%	16.947%
99	16.438	2379	2384	2389	rVB	30307	56243	30.19%	5.116%
100	16.639	2413	2417	2433	rVB3	22919	57499	30.86%	5.231%

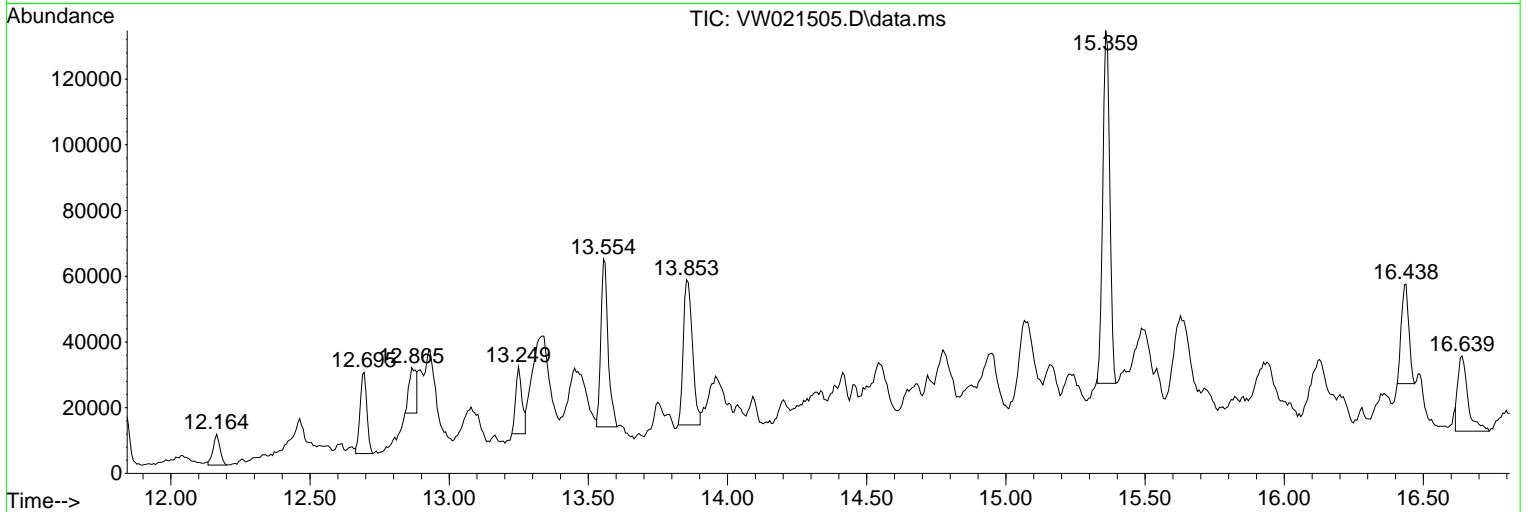
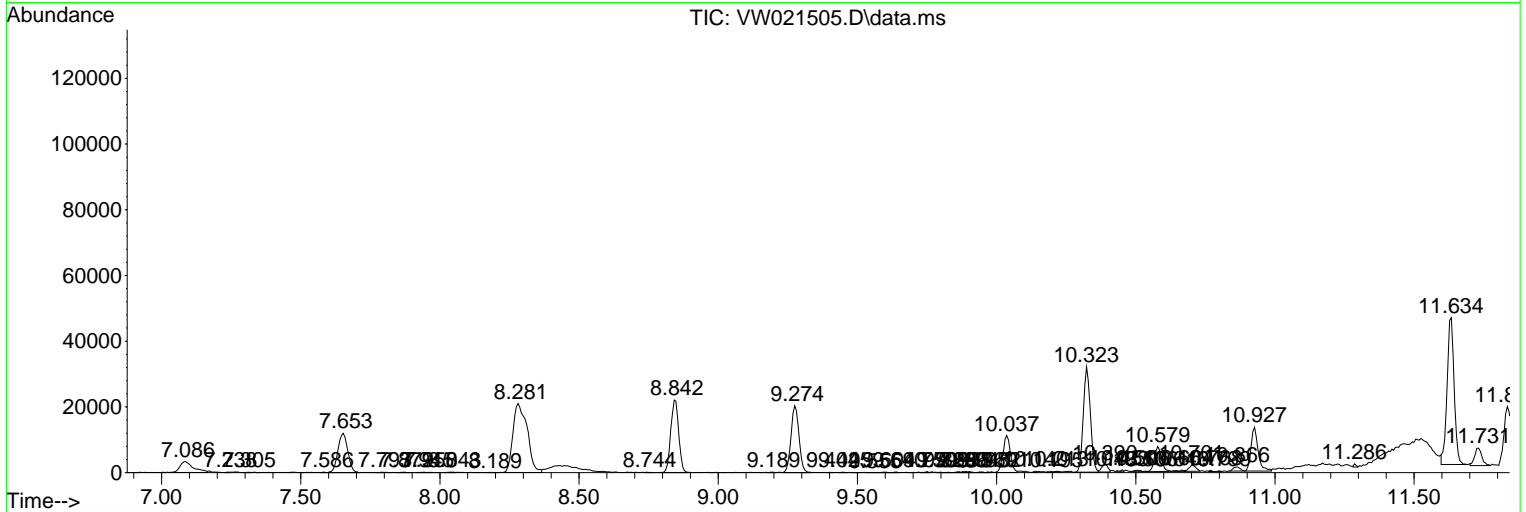
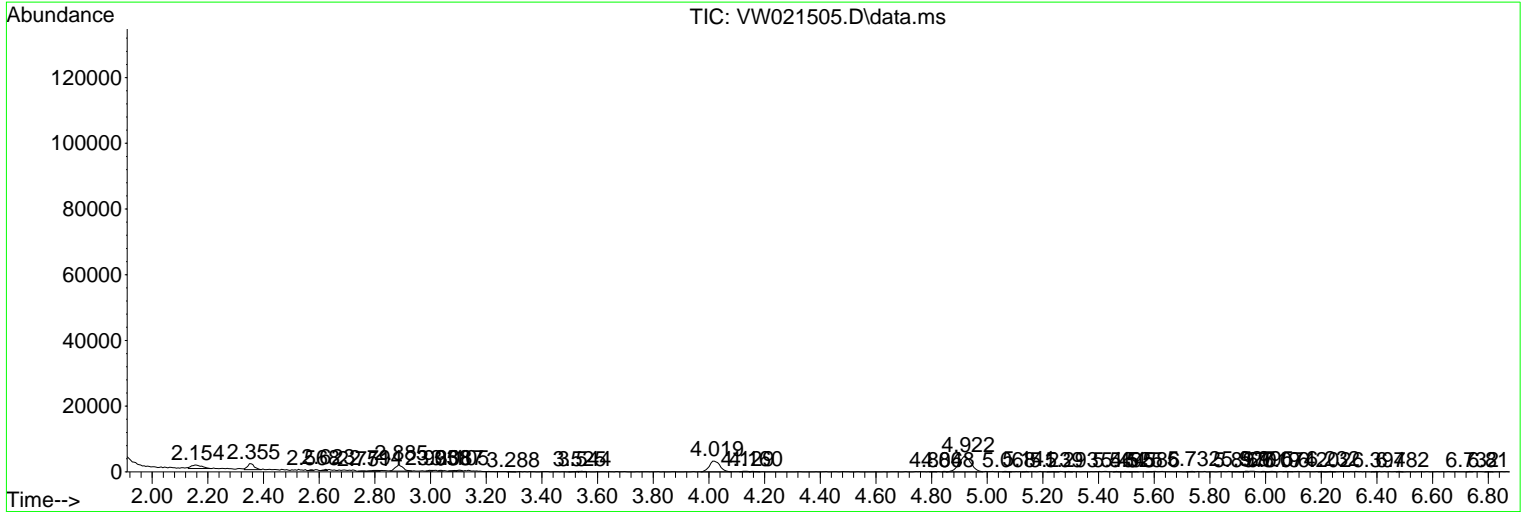
Sum of corrected areas: 1099258

Data Path : Z:\voasrv\HPCHEM1\MSVOA_W\Data\VW122021\
 Data File : VW021505.D
 Acq On : 20 Dec 2021 18:00
 Operator : SY/VA
 Sample : M5171-05
 Misc : 6.42g/10.0mL/MSVOA_W/SOIL
 ALS Vial : 18 Sample Multiplier: 1

Instrument :
 MSVOA_W
 ClientSampleId :
 BGLA1

Quant Method : Z:\voasrv\HPCHEM1\MSVOA_W\Method\SFAMWLM120921SMA.M
 Quant Title : SFAM01.0

TIC Library : C:\Database\NIST20.L
 TIC Integration Parameters: LSCINT.P



Data Path : Z:\voasrv\HPCHEM1\MSVOA_W\Data\VW122021\
 Data File : VW021505.D
 Acq On : 20 Dec 2021 18:00
 Operator : SY/VA
 Sample : M5171-05
 Misc : 6.42g/10.0mL/MSVOA_W/SOIL
 ALS Vial : 18 Sample Multiplier: 1

Instrument :
 MSVOA_W
 ClientSampleId :
 BGLA1

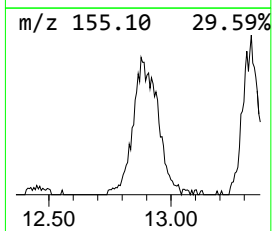
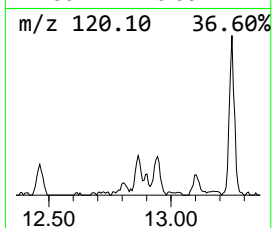
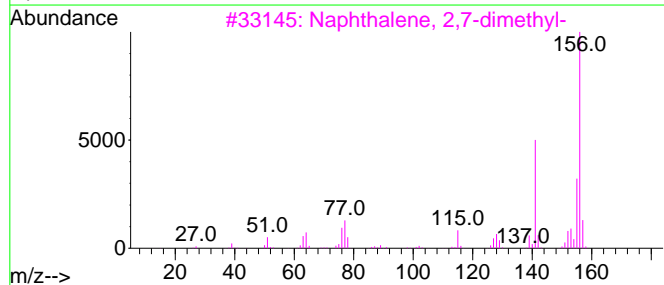
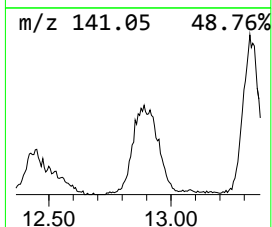
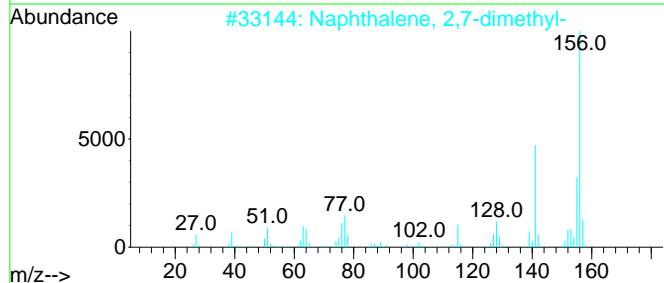
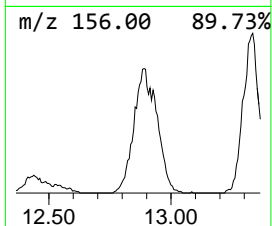
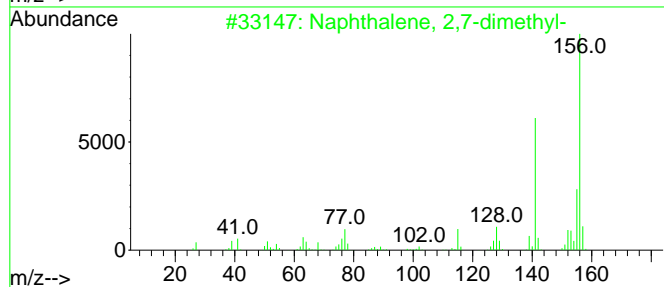
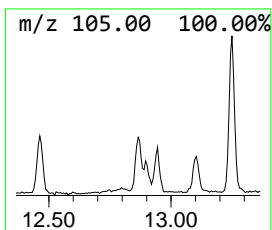
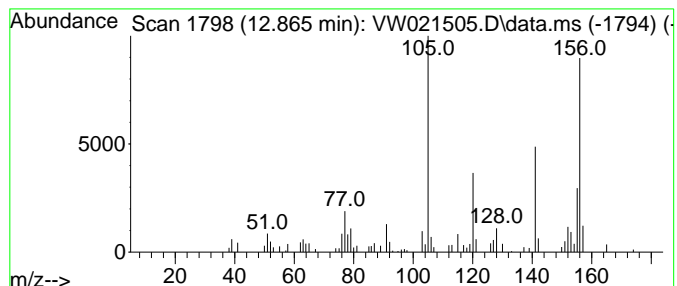
Quant Method : Z:\voasrv\HPCHEM1\MSVOA_W\Method\SFAMWLM120921SMA.M
 Quant Title : SFAM01.0

TIC Library : C:\Database\NIST20.L
 TIC Integration Parameters: LSCINT.P

 Peak Number 3 Naphthalene, 2,7-dimethyl- Concentration Rank 5

R.T.	EstConc	Area	Relative to ISTD	R.T.
12.865	7.23 ug/L	26342	1,4-Dichlorobenzene-d4	13.560

Hit#	of	Tentative ID	MW	MolForm	CAS#	Qual
1	5	Naphthalene, 2,7-dimethyl-	156	C12H12	000582-16-1	86
2		Naphthalene, 2,7-dimethyl-	156	C12H12	000582-16-1	86
3		Naphthalene, 2,7-dimethyl-	156	C12H12	000582-16-1	86
4		Naphthalene, 1,5-dimethyl-	156	C12H12	000571-61-9	86
5		Naphthalene, 2,7-dimethyl-	156	C12H12	000582-16-1	86



Data Path : Z:\voasrv\HPCHEM1\MSVOA_W\Data\VW122021\
 Data File : VW021505.D
 Acq On : 20 Dec 2021 18:00
 Operator : SY/VA
 Sample : M5171-05
 Misc : 6.42g/10.0mL/MSVOA_W/SOIL
 ALS Vial : 18 Sample Multiplier: 1

Instrument :
 MSVOA_W
 ClientSampleId :
 BGLA1

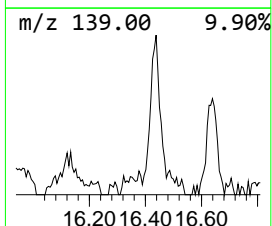
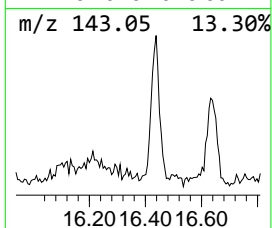
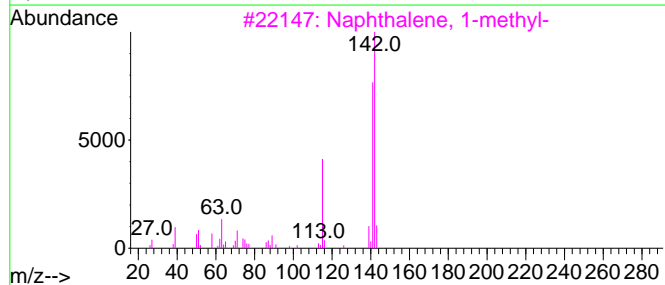
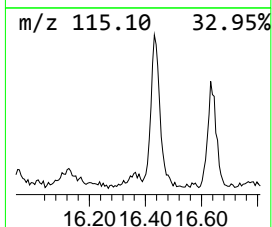
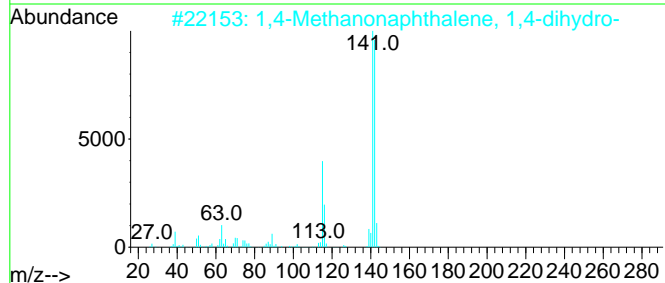
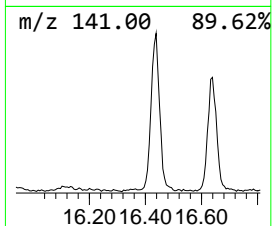
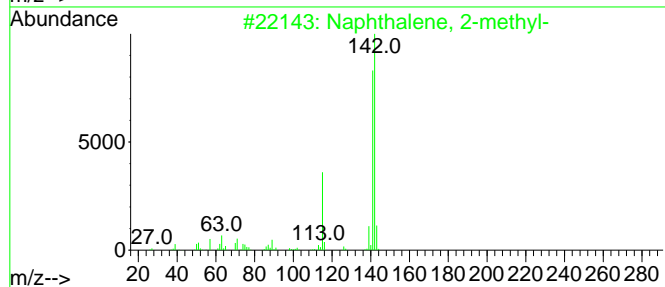
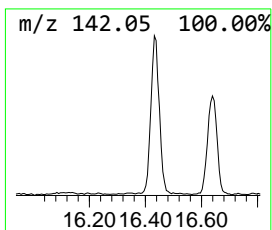
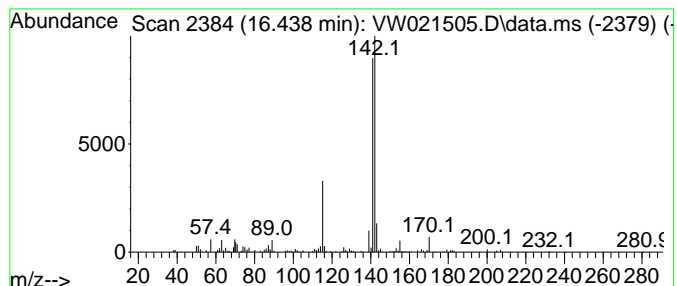
Quant Method : Z:\voasrv\HPCHEM1\MSVOA_W\Method\SFAMWLM120921SMA.M
 Quant Title : SFAM01.0

TIC Library : C:\Database\NIST20.L
 TIC Integration Parameters: LSCINT.P

 Peak Number 5 1,4-Methanonaphthalene, 1,4... Concentration Rank 3

R.T.	EstConc	Area	Relative to ISTD	R.T.
16.438	15.44 ug/L	56243	1,4-Dichlorobenzene-d4	13.560

Hit#	of 5	Tentative ID	MW	MolForm	CAS#	Qual
1		Naphthalene, 2-methyl-	142	C11H10	000091-57-6	93
2		1,4-Methanonaphthalene, 1,4-dihy...	142	C11H10	004453-90-1	90
3		Naphthalene, 1-methyl-	142	C11H10	000090-12-0	90
4		Naphthalene, 1-methyl-	142	C11H10	000090-12-0	90
5		Naphthalene, 1-methyl-	142	C11H10	000090-12-0	90



Data Path : Z:\voasrv\HPCHEM1\MSVOA_W\Data\VW122021\
 Data File : VW021505.D
 Acq On : 20 Dec 2021 18:00
 Operator : SY/VA
 Sample : M5171-05
 Misc : 6.42g/10.0mL/MSVOA_W/SOIL
 ALS Vial : 18 Sample Multiplier: 1

Instrument :
 MSVOA_W
 ClientSampleId :
 BGLA1

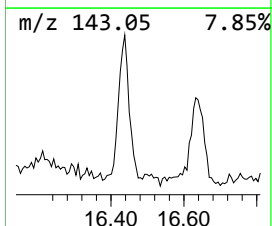
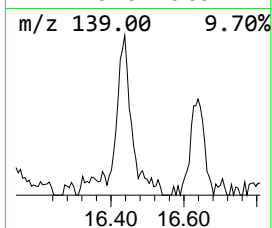
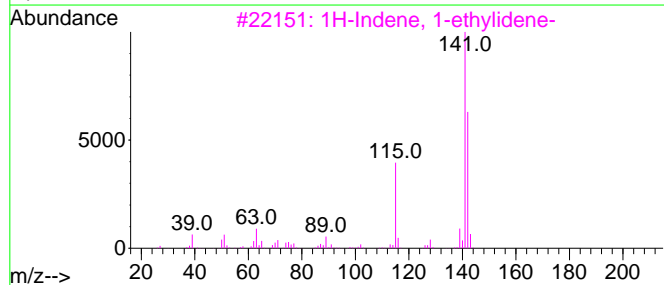
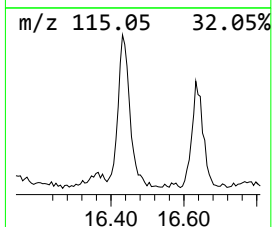
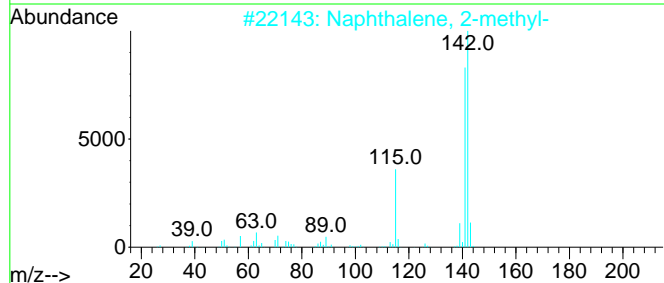
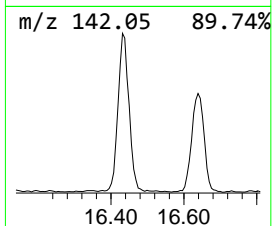
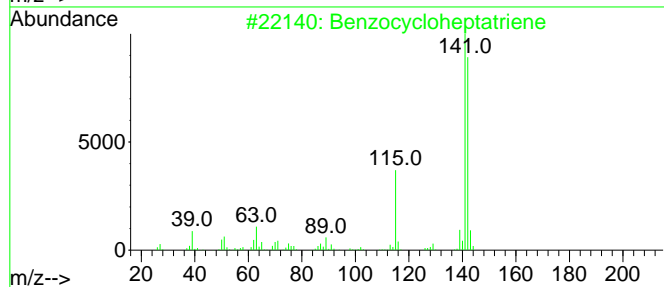
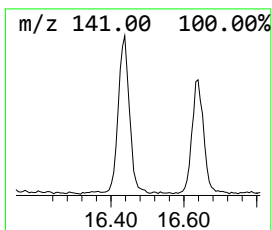
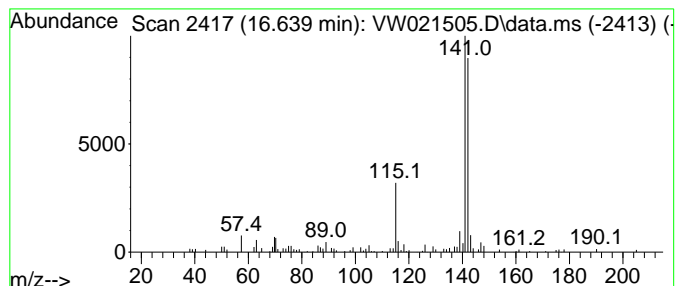
Quant Method : Z:\voasrv\HPCHEM1\MSVOA_W\Method\SFAMWLM120921SMA.M
 Quant Title : SFAM01.0

TIC Library : C:\Database\NIST0.L
 TIC Integration Parameters: LSCINT.P

 Peak Number 6 Benzocycloheptatriene Concentration Rank 2

R.T.	EstConc	Area	Relative to ISTD	R.T.
16.639	15.78 ug/L	57499	1,4-Dichlorobenzene-d4	13.560

Hit#	of 5	Tentative ID	MW	MolForm	CAS#	Qual
1		Benzocycloheptatriene	142	C11H10	000264-09-5	93
2		Naphthalene, 2-methyl-	142	C11H10	000091-57-6	90
3		1H-Indene, 1-ethylidene-	142	C11H10	002471-83-2	90
4		Naphthalene, 1-methyl-	142	C11H10	000090-12-0	90
5		Naphthalene, 1-methyl-	142	C11H10	000090-12-0	87



Data Path : Z:\voasrv\HPCHEM1\MSVOA_W\Data\VW122021\
Data File : VW021505.D
Acq On : 20 Dec 2021 18:00
Operator : SY/VA
Sample : M5171-05
Misc : 6.42g/10.0mL/MSVOA_W/SOIL
ALS Vial : 18 Sample Multiplier: 1

Instrument :
MSVOA_W
ClientSampleId :
BGLA1

Quant Method : Z:\voasrv\HPCHEM1\MSVOA_W\Method\SFAMWLM120921SMA.M
Quant Title : SFAM01.0

TIC Library : C:\Database\NIST0.L
TIC Integration Parameters: LSCINT.P

TIC Top Hit name	RT	EstConc	Units	Response	--Internal Standard--			
					#	RT	Resp	Conc
Naphthalene, 2,...	12.865	7.2	ug/L	26342	3	13.560	91070	25.0
1,4-Methanonaph...	16.438	15.4	ug/L	56243	3	13.560	91070	25.0
Benzocyclohepta...	16.639	15.8	ug/L	57499	3	13.560	91070	25.0