

Data Path : Z:\voasrv\HPCHEM1\MSVOA_W\Data\VW122021\
 Data File : VW021510.D
 Acq On : 20 Dec 2021 20:04
 Operator : SY/VA
 Sample : M5125-05
 Misc : 11.73g/10.0mL/MSVOA_W/SOIL
 ALS Vial : 23 Sample Multiplier: 1

Instrument :
 MSVOA_W
 ClientSampleId :
 HOAM6

Integration Parameters: LSCINT.P

Integrator: RTE
 Smoothing : OFF
 Sampling : 1
 Start Thrs : 0.2
 Stop Thrs : 0

Filtering: 5
 Min Area: 0 % of largest Peak
 Max Peaks: 100
 Peak Location: TOP

If leading or trailing edge < 100 prefer < Baseline drop else tangent >
 Peak separation: 5

Method : Z:\voasrv\HPCHEM1\MSVOA_W\Method\SFAMWLM120921SMA.M
 Title : SFAM01.0

Signal : TIC: VW021510.D\data.ms

peak #	R.T. min	first scan	max scan	last scan	PK TY	peak height	corr. area	corr. % max.	% of total
1	2.349	67	73	81	rBV	41176	65909	13.51%	1.686%
2	2.879	154	160	173	rVB	22272	46007	9.43%	1.177%
3	3.574	269	274	275	rBV	130	172	0.04%	0.004%
4	3.934	331	333	335	rVV	95	108	0.02%	0.003%
5	4.013	335	346	362	rVV	60676	168757	34.59%	4.317%
6	4.172	368	372	377	rVB	226	357	0.07%	0.009%
7	4.257	382	386	387	rBV	69	111	0.02%	0.003%
8	4.355	400	402	409	rBB	112	238	0.05%	0.006%
9	4.464	418	420	423	rBB	123	120	0.02%	0.003%
10	4.659	449	452	455	rBB	102	139	0.03%	0.004%
11	4.763	467	469	472	rBV	132	153	0.03%	0.004%
12	4.787	472	473	476	rVV	124	125	0.03%	0.003%
13	4.915	480	494	507	rVB2	12236	40101	8.22%	1.026%
14	5.031	512	513	517	rVB	125	148	0.03%	0.004%
15	5.068	517	519	522	rBV	107	131	0.03%	0.003%
16	5.165	532	535	537	rVV2	125	140	0.03%	0.004%
17	5.281	552	554	556	rBV2	140	116	0.02%	0.003%
18	5.324	559	561	563	rBV	146	151	0.03%	0.004%
19	5.440	579	580	583	rBB	124	130	0.03%	0.003%
20	5.464	583	584	588	rBB	157	204	0.04%	0.005%
21	5.507	588	591	595	rBV	124	237	0.05%	0.006%
22	5.537	595	596	599	rVB	180	165	0.03%	0.004%
23	5.574	599	602	604	rBV	131	188	0.04%	0.005%
24	5.671	616	618	620	rBV	119	145	0.03%	0.004%
25	5.757	629	632	634	rBV	141	139	0.03%	0.004%
26	5.842	643	646	648	rBV	129	149	0.03%	0.004%
27	5.873	648	651	654	rVB	151	248	0.05%	0.006%
28	5.940	655	662	670	rBV6	1420	4069	0.83%	0.104%
29	6.110	686	690	693	rBV	98	118	0.02%	0.003%
30	6.342	725	728	729	rBV	104	103	0.02%	0.003%
31	6.373	732	733	736	rVB2	124	110	0.02%	0.003%
32	6.427	740	742	743	rBV	160	161	0.03%	0.004%
33	6.549	759	762	763	rBV	125	134	0.03%	0.003%
34	6.586	767	768	771	rBV2	75	102	0.02%	0.003%
35	6.757	791	796	797	rBV	156	231	0.05%	0.006%
36	6.830	803	808	809	rBB	188	192	0.04%	0.005%

Data Path : Z:\voasrv\HPCHEM1\MSVOA_W\Data\VW122021\
 Data File : VW021510.D
 Acq On : 20 Dec 2021 20:04
 Operator : SY/VA
 Sample : M5125-05
 Misc : 11.73g/10.0mL/MSVOA_W/SOIL
 ALS Vial : 23 Sample Multiplier: 1

Instrument :
 MSVOA_W
 ClientSampleId :
 HOAM6

Integration Parameters: LSCINT.P

Integrator: RTE
 Smoothing : OFF
 Sampling : 1
 Start Thrs: 0.2
 Stop Thrs : 0

Filtering: 5
 Min Area: 0 % of largest Peak
 Max Peaks: 100
 Peak Location: TOP

If leading or trailing edge < 100 prefer < Baseline drop else tangent >
 Peak separation: 5

Method : Z:\voasrv\HPCHEM1\MSVOA_W\Method\SFAMWLM120921SMA.M
 Title : SFAM01.0

37	6.854	809	812	814	rBV	151	180	0.04%	0.005%
38	7.025	839	840	842	rBV	147	139	0.03%	0.004%
39	7.086	842	850	867	rBV	12495	38498	7.89%	0.985%
40	7.281	881	882	886	rBV	104	145	0.03%	0.004%
41	7.397	898	901	902	rBB	125	109	0.02%	0.003%
42	7.458	905	911	912	rBB	152	229	0.05%	0.006%
43	7.543	923	925	927	rBV	87	102	0.02%	0.003%
44	7.647	930	942	954	rBV	83351	201951	41.40%	5.167%
45	7.811	966	969	973	rBV2	110	173	0.04%	0.004%
46	7.884	979	981	985	rVB2	161	198	0.04%	0.005%
47	7.921	985	987	989	rBB2	146	132	0.03%	0.003%
48	7.964	992	994	996	rBV	152	160	0.03%	0.004%
49	7.994	996	999	1003	rVB2	136	210	0.04%	0.005%
50	8.098	1013	1016	1018	rBB	130	127	0.03%	0.003%
51	8.128	1018	1021	1024	rBB	123	109	0.02%	0.003%
52	8.275	1034	1045	1060	rBV2	161378	487848	100.00%	12.481%
53	8.689	1111	1113	1116	rBV	144	173	0.04%	0.004%
54	8.738	1119	1121	1124	rBV	118	128	0.03%	0.003%
55	8.842	1126	1138	1150	rBV	181367	358584	73.50%	9.174%
56	8.964	1156	1158	1161	rBB	123	138	0.03%	0.004%
57	8.994	1162	1163	1166	rBB	135	117	0.02%	0.003%
58	9.073	1174	1176	1177	rBV	301	292	0.06%	0.007%
59	9.128	1182	1185	1186	rBB	142	115	0.02%	0.003%
60	9.201	1196	1197	1198	rBV	137	99	0.02%	0.003%
61	9.274	1201	1209	1218	rVB	109881	219244	44.94%	5.609%
62	9.652	1267	1271	1274	rBB2	123	151	0.03%	0.004%
63	9.683	1274	1276	1277	rBV2	149	122	0.03%	0.003%
64	9.811	1296	1297	1300	rBV	108	104	0.02%	0.003%
65	9.921	1312	1315	1316	rBB	128	100	0.02%	0.003%
66	9.963	1320	1322	1324	rVV	120	117	0.02%	0.003%
67	10.036	1327	1334	1345	rVB	65268	115252	23.62%	2.949%
68	10.207	1359	1362	1363	rBV	123	115	0.02%	0.003%
69	10.323	1373	1381	1388	rVV	253777	449340	92.11%	11.496%
70	10.390	1388	1392	1401	rVB	4000	7081	1.45%	0.181%
71	10.463	1403	1404	1408	rBB	144	137	0.03%	0.004%
72	10.518	1412	1413	1416	rVB	154	121	0.02%	0.003%
73	10.579	1416	1423	1435	rBB	41347	68859	14.11%	1.762%
74	10.707	1439	1444	1448	rVB3	1120	1634	0.33%	0.042%
75	10.780	1453	1456	1459	rBB	128	119	0.02%	0.003%
76	10.866	1466	1470	1473	rBV3	864	1207	0.25%	0.031%

Data Path : Z:\voasrv\HPCHEM1\MSVOA_W\Data\VW122021\
 Data File : VW021510.D
 Acq On : 20 Dec 2021 20:04
 Operator : SY/VA
 Sample : M5125-05
 Misc : 11.73g/10.0mL/MSVOA_W/SOIL
 ALS Vial : 23 Sample Multiplier: 1

Instrument :
 MSVOA_W
 ClientSampleId :
 HOAM6

Integration Parameters: LSCINT.P

Integrator: RTE
 Smoothing : OFF Filtering: 5
 Sampling : 1 Min Area: 0 % of largest Peak
 Start Thrs: 0.2 Max Peaks: 100
 Stop Thrs : 0 Peak Location: TOP

If leading or trailing edge < 100 prefer < Baseline drop else tangent >
 Peak separation: 5

Method : Z:\voasrv\HPCHEM1\MSVOA_W\Method\SFAMWLM120921SMA.M
 Title : SFAM01.0

77	10.927	1473	1480	1492	rVV	56160	96132	19.71%	2.459%
78	11.012	1492	1494	1498	rVB2	231	246	0.05%	0.006%
79	11.061	1499	1502	1505	rVV2	299	368	0.08%	0.009%
80	11.140	1509	1515	1517	rBB	174	296	0.06%	0.008%
81	11.189	1521	1523	1526	rBV	111	164	0.03%	0.004%
82	11.292	1539	1540	1544	rBB	132	159	0.03%	0.004%
83	11.353	1547	1550	1553	rBV	226	325	0.07%	0.008%
84	11.396	1553	1557	1559	rBV3	241	365	0.07%	0.009%
85	11.628	1588	1595	1606	rVB	259943	455745	93.42%	11.660%
86	11.731	1606	1612	1619	rBV	1135	2303	0.47%	0.059%
87	11.841	1621	1630	1639	rVV2	4004	7658	1.57%	0.196%
88	12.140	1678	1679	1680	rBV	464	320	0.07%	0.008%
89	12.170	1680	1684	1690	rVV2	1191	2099	0.43%	0.054%
90	12.231	1692	1694	1695	rBV2	287	169	0.03%	0.004%
91	12.256	1696	1698	1699	rVB2	349	180	0.04%	0.005%
92	12.298	1704	1705	1707	rBV2	246	164	0.03%	0.004%
93	12.426	1724	1726	1727	rBV2	292	313	0.06%	0.008%
94	12.463	1730	1732	1735	rVB3	1196	1299	0.27%	0.033%
95	12.688	1763	1769	1777	rVB	91150	153359	31.44%	3.923%
96	12.865	1793	1798	1800	rBV5	2263	3436	0.70%	0.088%
97	13.249	1857	1861	1865	rBV	5595	8314	1.70%	0.213%
98	13.554	1905	1911	1919	rBV	302958	480255	98.44%	12.287%
99	13.853	1953	1960	1969	rBV	223352	373053	76.47%	9.544%
100	15.365	2202	2208	2214	rBV	21875	38545	7.90%	0.986%

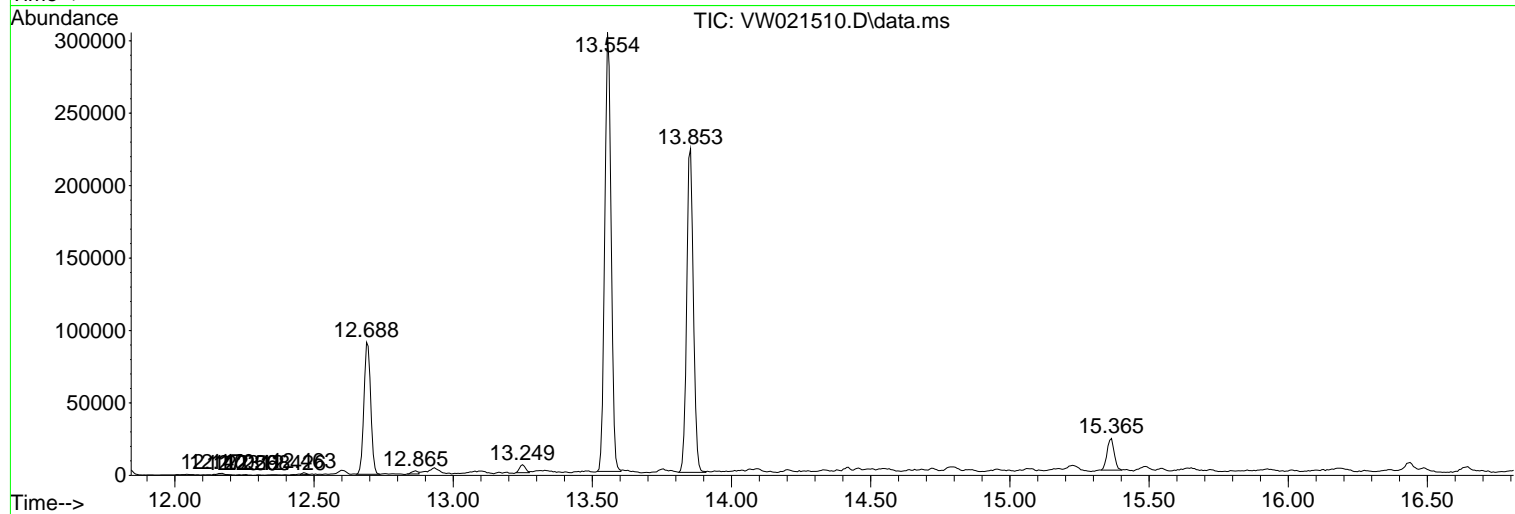
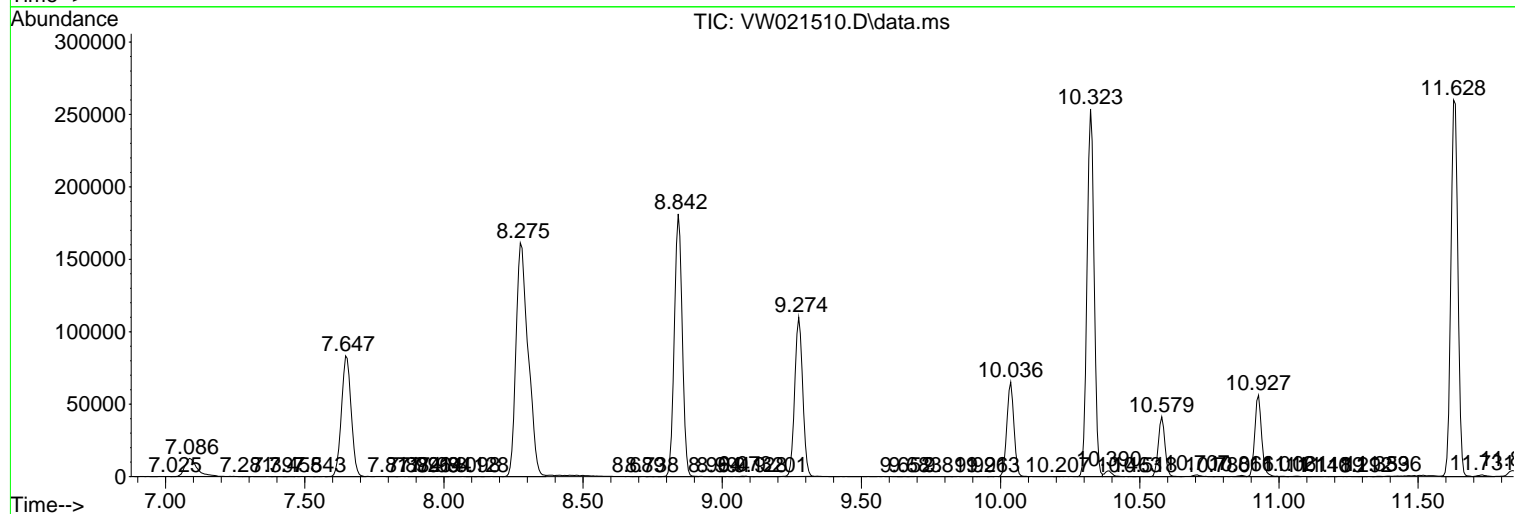
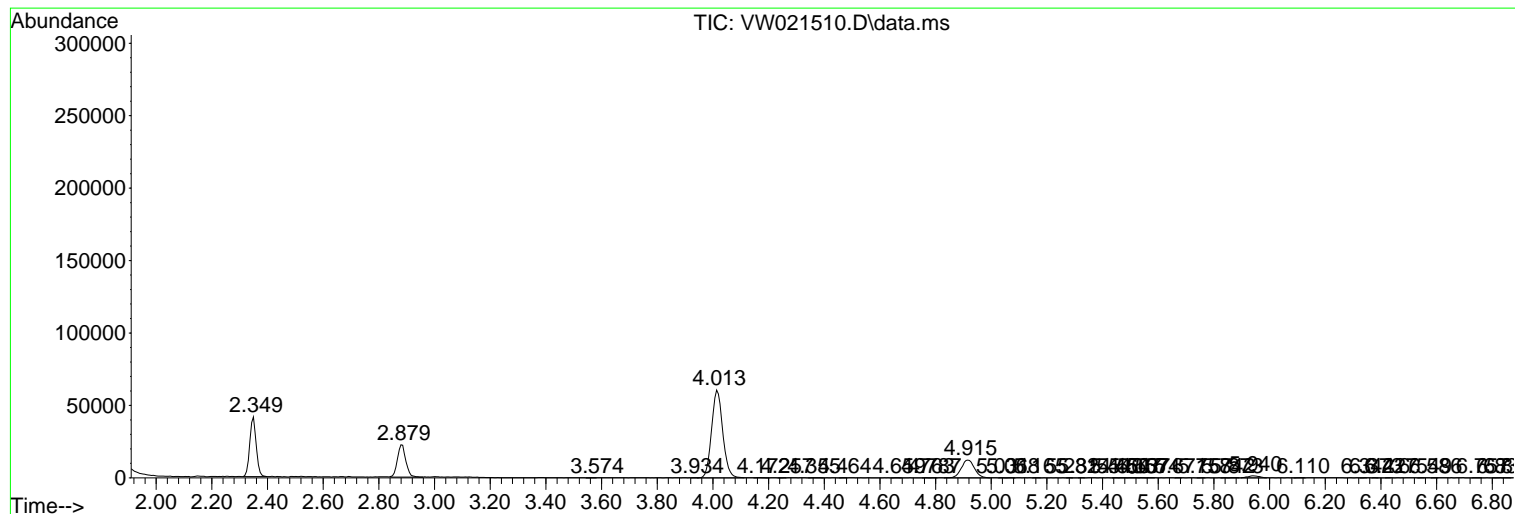
Sum of corrected areas: 3908734

Data Path : Z:\voasrv\HPCHEM1\MSVOA_W\Data\VW122021\
 Data File : VW021510.D
 Acq On : 20 Dec 2021 20:04
 Operator : SY/VA
 Sample : M5125-05
 Misc : 11.73g/10.0mL/MSVOA_W/SOIL
 ALS Vial : 23 Sample Multiplier: 1

Instrument :
 MSVOA_W
 ClientSampleId :
 HOAM6

Quant Method : Z:\voasrv\HPCHEM1\MSVOA_W\Method\SFAMWLM120921SMA.M
 Quant Title : SFAM01.0

TIC Library :
 TIC Integration Parameters: LSCINT.P



Library Search Compound Report

Data Path : Z:\voasrv\HPCHEM1\MSVOA_W\Data\VW122021\
Data File : VW021510.D
Acq On : 20 Dec 2021 20:04
Operator : SY/VA
Sample : M5125-05
Misc : 11.73g/10.0mL/MSVOA_W/SOIL
ALS Vial : 23 Sample Multiplier: 1

Instrument :
MSVOA_W
ClientSampleId :
HOAM6

Quant Method : Z:\voasrv\HPCHEM1\MSVOA_W\Method\SFAMWLM120921SMA.M
Quant Title : SFAM01.0

TIC Library :
TIC Integration Parameters: LSCINT.P

No Library Search Compounds Detected

Data Path : Z:\voasrv\HPCHEM1\MSVOA_W\Data\VW122021\
Data File : VW021510.D
Acq On : 20 Dec 2021 20:04
Operator : SY/VA
Sample : M5125-05
Misc : 11.73g/10.0mL/MSVOA_W/SOIL
ALS Vial : 23 Sample Multiplier: 1

Instrument :
MSVOA_W
ClientSampleId :
HOAM6

Quant Method : Z:\voasrv\HPCHEM1\MSVOA_W\Method\SFAMWLM120921SMA.M
Quant Title : SFAM01.0

TIC Library :
TIC Integration Parameters: LSCINT.P

TIC Top Hit name	RT	EstConc	Units	Response	--Internal Standard--		
					#	RT	Resp Conc
