

Data Path : Z:\voasrv\HPCHEM1\MSVOA_W\Data\VW122220\
 Data File : VW017700.D
 Acq On : 22 Dec 2020 12:47
 Operator : SY/VA
 Sample : L5176-03RE
 Misc : 4.29G/5ML/MSVOA_W/SOIL
 ALS Vial : 7 Sample Multiplier: 1

Instrument :
 MSVOA_W
 ClientSampleId :
 CHRT-27339RE

Quant Time: Dec 23 02:08:23 2020
 Quant Method : Z:\voasrv\HPCHEM1\MSVOA_W\Method\82W121420S.M
 Quant Title : SW846 8260
 QLast Update : Mon Dec 14 12:39:23 2020
 Response via : Initial Calibration

Compound	R.T.	QIon	Response	Conc	Units	Dev(Min)

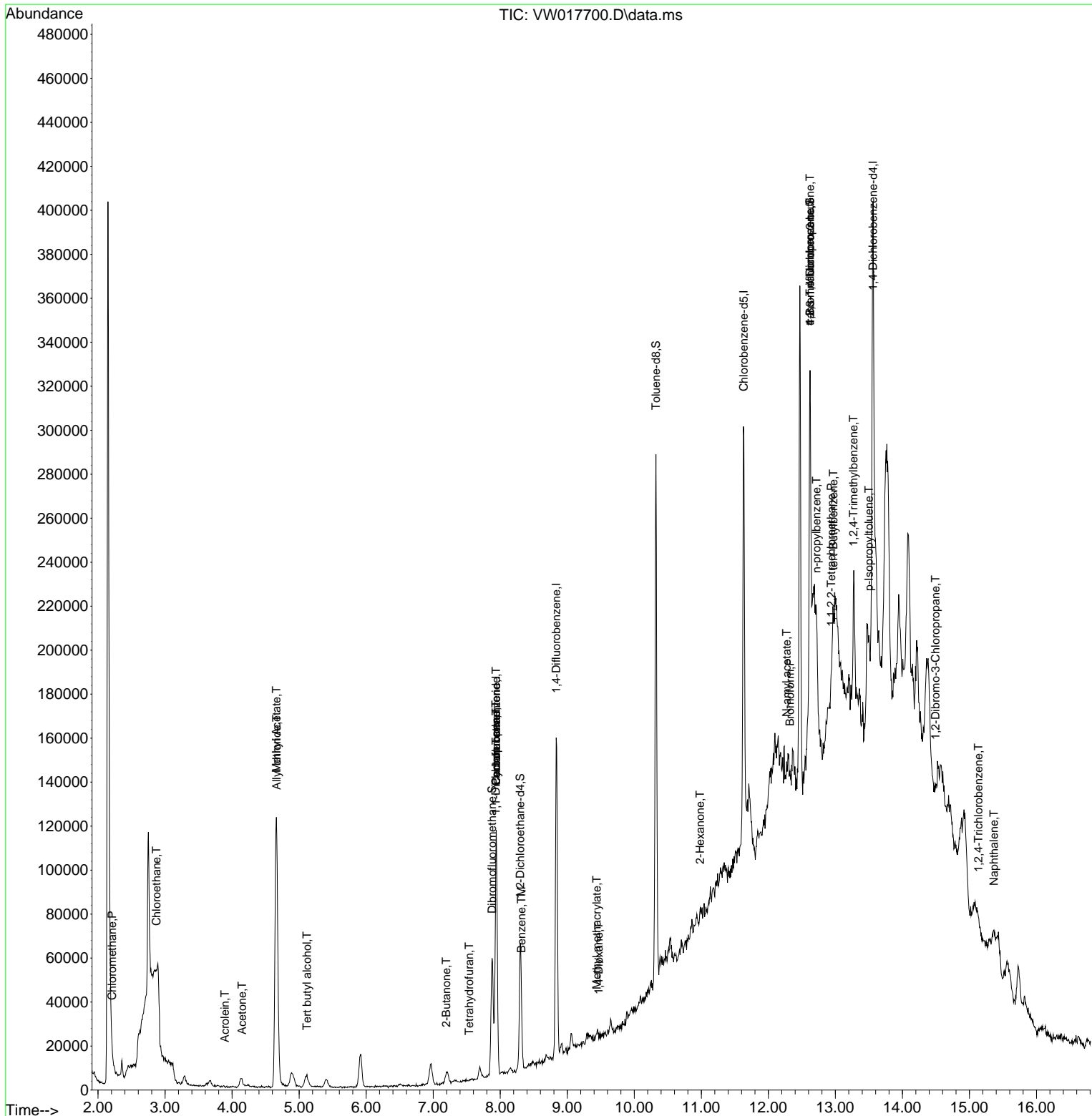
Internal Standards						
1) Pentafluorobenzene	7.939	168	75444	50.00	ug/l	#-0.01
34) 1,4-Difluorobenzene	8.836	114	122720	50.00	ug/l	0.00
63) Chlorobenzene-d5	11.634	117	103781	50.00	ug/l	0.00
72) 1,4-Dichlorobenzene-d4	13.560	152	45726	50.00	ug/l	0.00
System Monitoring Compounds						
33) 1,2-Dichloroethane-d4	8.299	65	44263	48.16	ug/l	0.00
Spiked Amount	50.000		Recovery	=	96.32%	
35) Dibromofluoromethane	7.878	113	38096	46.91	ug/l	0.00
Spiked Amount	50.000		Recovery	=	93.82%	
50) Toluene-d8	10.323	98	150217	47.51	ug/l	0.00
Spiked Amount	50.000		Recovery	=	95.02%	
62) 4-Bromofluorobenzene	12.621	95	59767	52.94	ug/l	0.00
Spiked Amount	50.000		Recovery	=	105.88%	
Target Compounds						
						Qvalue
3) Chloromethane	2.209	50	892	1.34	ug/l #	86
6) Chloroethane	2.873	64	766	1.27	ug/l #	66
11) Tert butyl alcohol	5.117	59	5472	47.81	ug/l #	82
13) Acrolein	3.891	56	72	1.30	ug/l #	1
14) Allyl chloride	4.666	41	4609	3.51	ug/l #	22
16) Acetone	4.147	43	6643	33.22	ug/l	90
18) Methyl Acetate	4.659	43	236480	581.84	ug/l	92
20) Methylene Chloride	4.879	84	4031	Below	Cal	93
25) 2-Butanone	7.196	43	623	2.34	ug/l #	79
26) 2,2-Dichloropropane	7.415	77	150	Below	Cal	90
29) Tetrahydrofuran	7.537	42	216	1.44	ug/l #	27
31) Cyclohexane	7.939	56	3293	2.07	ug/l #	57
36) 1,1-Dichloropropene	7.933	75	6780	5.28	ug/l #	54
38) Carbon Tetrachloride	7.939	117	8001	6.20	ug/l #	15
40) Benzene	8.317	78	4118	1.21	ug/l	92
48) Methyl methacrylate	9.439	41	831	1.68	ug/l #	46
49) 1,4-Dioxane	9.470	88	150	25.80	ug/l #	1
59) 2-Hexanone	10.982	43	874	2.61	ug/l	67
71) Bromoform	12.323	173	449	1.06	ug/l #	28
74) N-amyl acetate	12.274	43	1203	1.59	ug/l #	6
75) 1,1,2,2-Tetrachloroethane	12.938	83	1387	2.30	ug/l	69
76) 1,2,3-Trichloropropane	12.621	75	24981	56.75	ug/l #	1
78) n-propylbenzene	12.719	91	5115	1.19	ug/l	83
81) trans-1,4-Dichloro-2-b...	12.621	75	24981	114.99	ug/l #	11
83) tert-Butylbenzene	12.969	119	5497	2.10	ug/l	83
84) 1,2,4-Trimethylbenzene	13.268	105	3764	1.25	ug/l	85
86) p-Isopropyltoluene	13.499	119	6131	1.85	ug/l	89
92) 1,2-Dibromo-3-Chloropr...	14.493	75	163	1.49	ug/l #	34
93) 1,2,4-Trichlorobenzene	15.133	180	1144	1.30	ug/l	62
95) Naphthalene	15.365	128	2720	1.52	ug/l	94

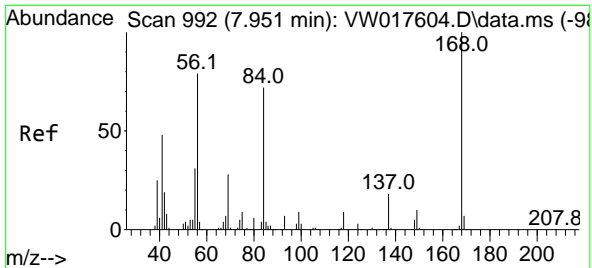
(#) = qualifier out of range (m) = manual integration (+) = signals summed

Data Path : Z:\voasrv\HPCHEM1\MSVOA_W\Data\VW122220\
 Data File : VW017700.D
 Acq On : 22 Dec 2020 12:47
 Operator : SY/VA
 Sample : L5176-03RE
 Misc : 4.29G/5ML/MSVOA_W/SOIL
 ALS Vial : 7 Sample Multiplier: 1

Instrument :
 MSVOA_W
Client Sampled :
 CHRT-27339RE

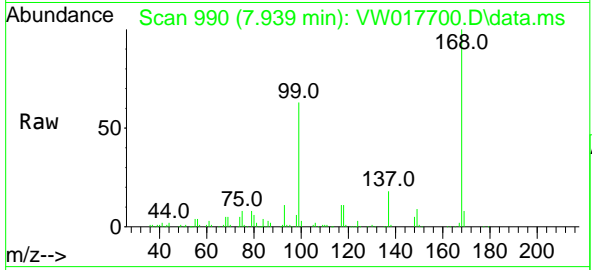
Quant Time: Dec 23 02:08:23 2020
 Quant Method : Z:\voasrv\HPCHEM1\MSVOA_W\Method\82W121420S.M
 Quant Title : SW846 8260
 QLast Update : Mon Dec 14 12:39:23 2020
 Response via : Initial Calibration



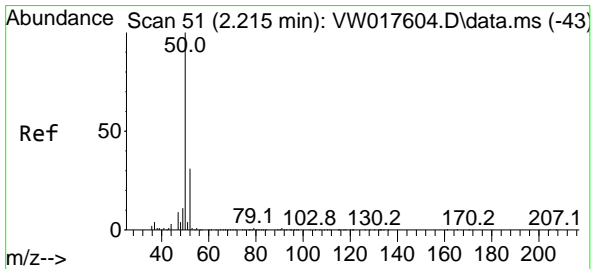
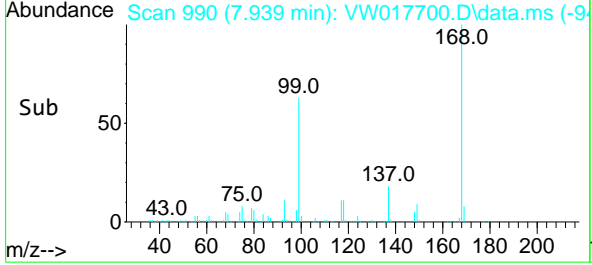
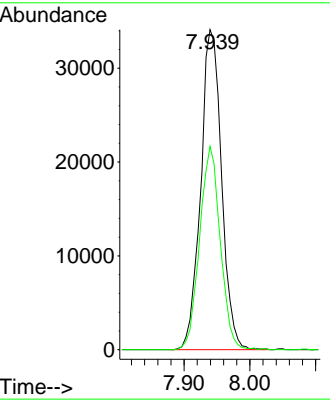


#1
 Pentafluorobenzene
 Concen: 50.00 ug/l
 RT: 7.939 min Scan# 990
 Delta R.T. -0.012 min
 Lab File: VW017700.D
 Acq: 22 Dec 2020 12:47

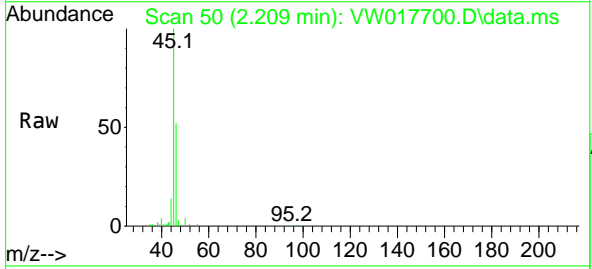
Instrument : MSVOA_W
 ClientSampleId : CHT-27339RE



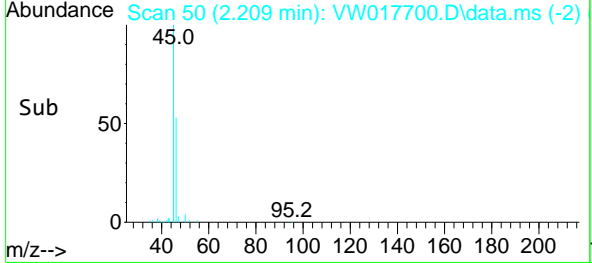
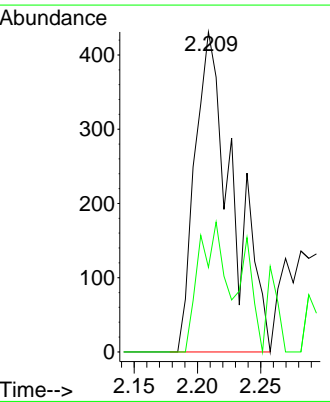
Tgt Ion:168 Resp: 75444
 Ion Ratio Lower Upper
 168 100
 99 63.5 40.7 61.1#

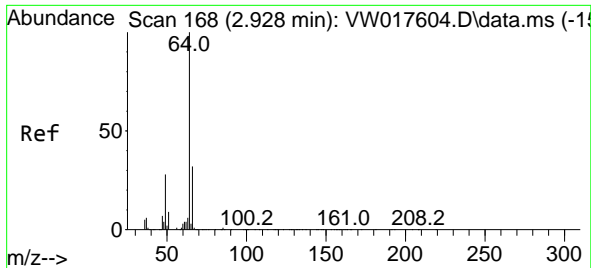


#3
 Chloromethane
 Concen: 1.34 ug/l
 RT: 2.209 min Scan# 50
 Delta R.T. -0.006 min
 Lab File: VW017700.D
 Acq: 22 Dec 2020 12:47



Tgt Ion: 50 Resp: 892
 Ion Ratio Lower Upper
 50 100
 52 26.5 27.6 41.4#

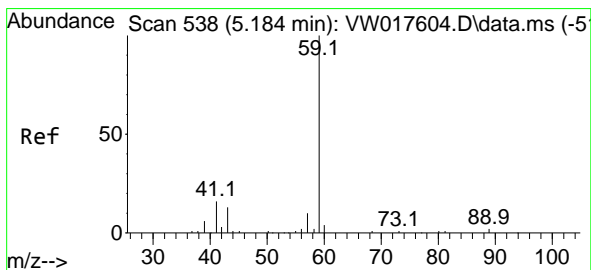
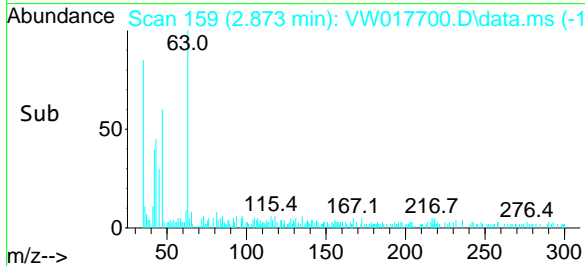
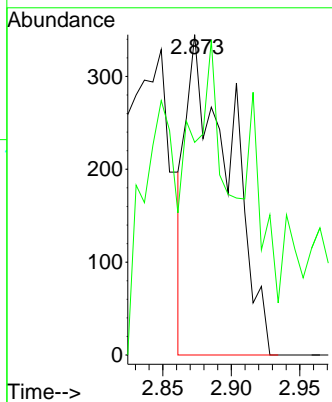
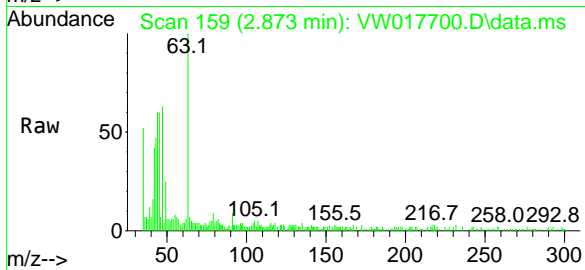




#6
 Chloroethane
 Concen: 1.27 ug/l
 RT: 2.873 min Scan# 159
 Delta R.T. -0.055 min
 Lab File: VW017700.D
 Acq: 22 Dec 2020 12:47

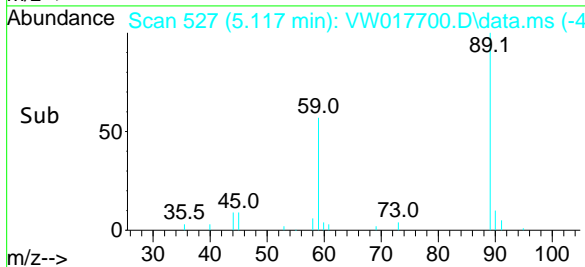
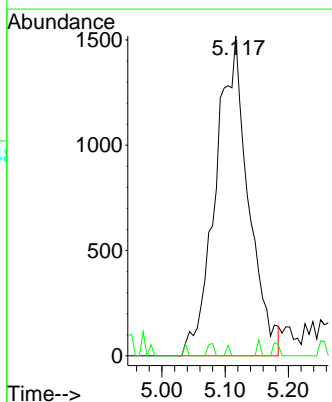
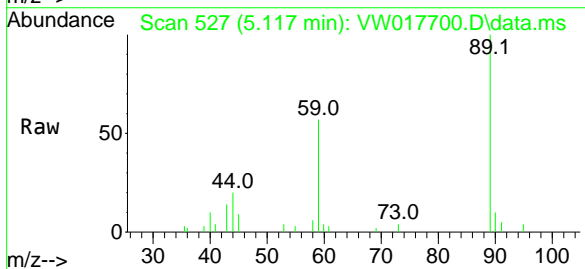
Instrument :
 MSVOA_W
 ClientSampled :
 CHRT-27339RE

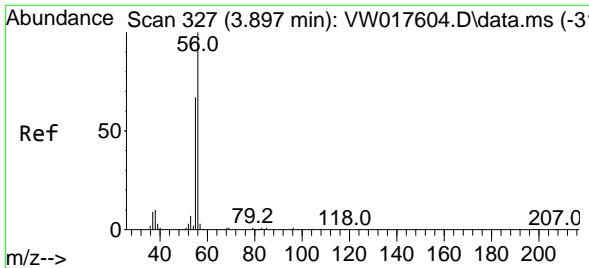
Tgt Ion: 64 Resp: 766
 Ion Ratio Lower Upper
 64 100
 66 50.1 25.0 37.6#



#11
 Tert butyl alcohol
 Concen: 47.81 ug/l
 RT: 5.117 min Scan# 527
 Delta R.T. -0.067 min
 Lab File: VW017700.D
 Acq: 22 Dec 2020 12:47

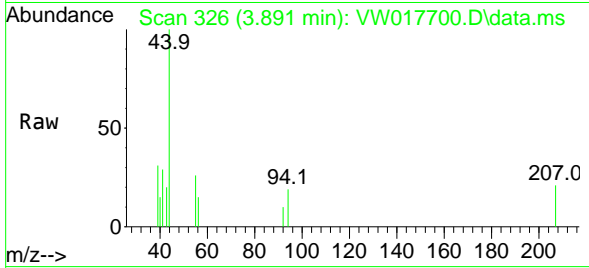
Tgt Ion: 59 Resp: 5472
 Ion Ratio Lower Upper
 59 100
 57 0.0 4.7 7.1#



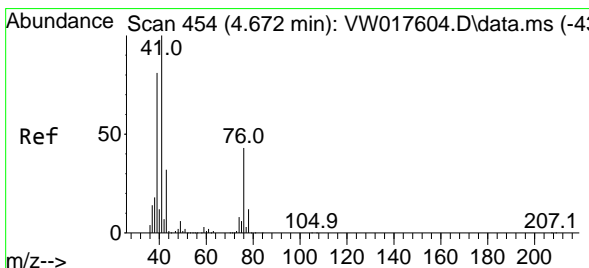
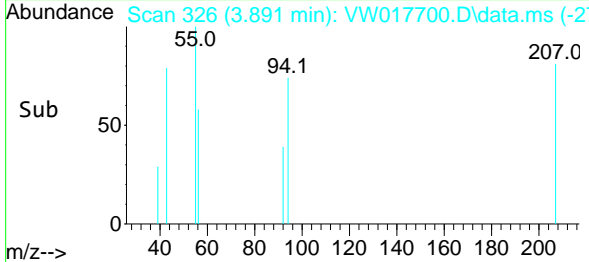
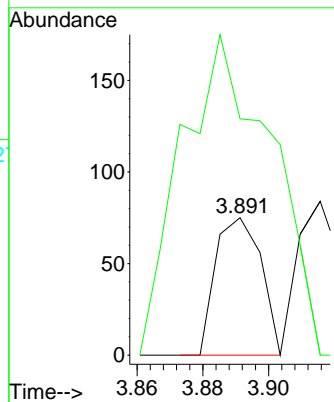


#13
 Acrolein
 Concen: 1.30 ug/l
 RT: 3.891 min Scan# 326
 Delta R.T. -0.006 min
 Lab File: VW017700.D
 Acq: 22 Dec 2020 12:47

Instrument :
 MSVOA_W
 ClientSampled :
 CHRT-27339RE

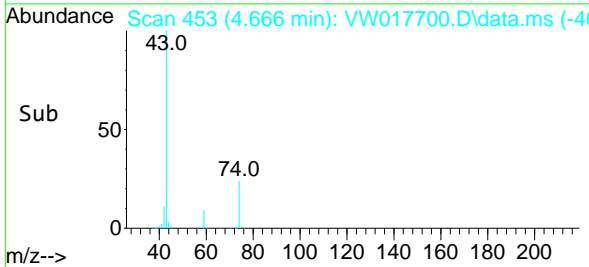
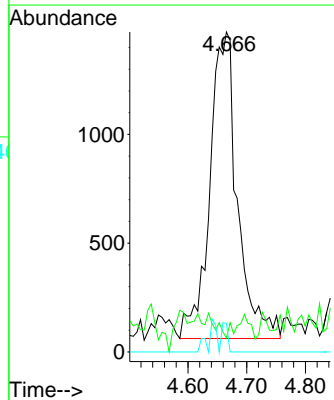
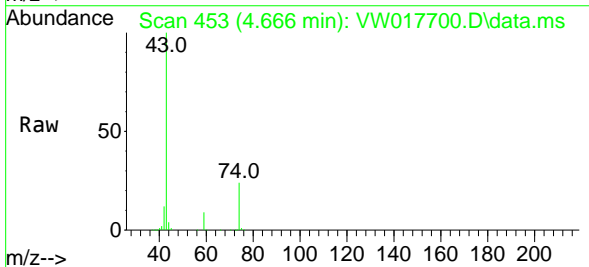


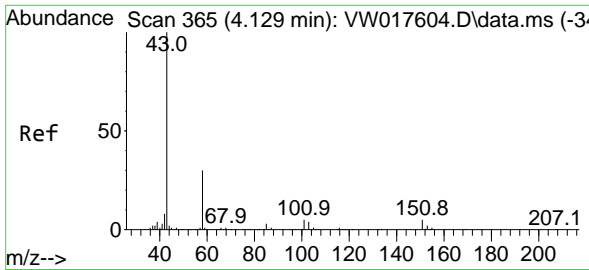
Tgt Ion: 56 Resp: 72
 Ion Ratio Lower Upper
 56 100
 55 462.5 55.9 83.9#



#14
 Allyl chloride
 Concen: 3.51 ug/l
 RT: 4.666 min Scan# 453
 Delta R.T. -0.006 min
 Lab File: VW017700.D
 Acq: 22 Dec 2020 12:47

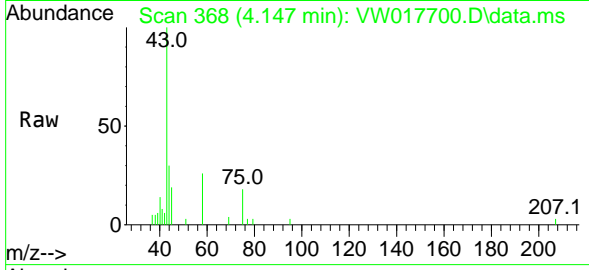
Tgt Ion: 41 Resp: 4609
 Ion Ratio Lower Upper
 41 100
 39 0.0 57.8 86.8#
 76 2.1 35.1 52.7#



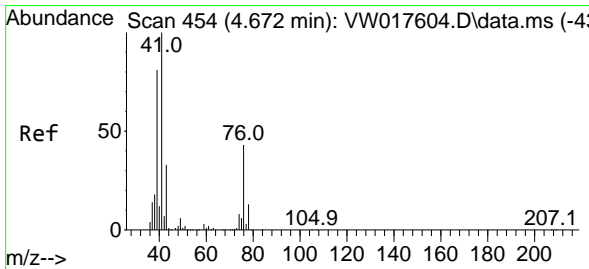
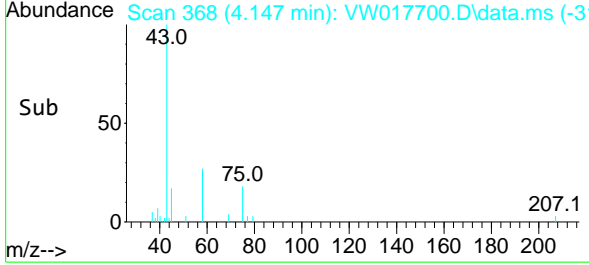
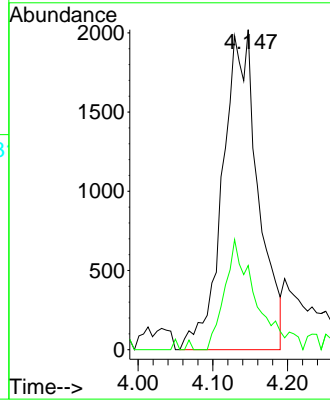


#16
 Acetone
 Concen: 33.22 ug/l
 RT: 4.147 min Scan# 368
 Delta R.T. 0.018 min
 Lab File: VW017700.D
 Acq: 22 Dec 2020 12:47

Instrument :
 MSVOA_W
 ClientSampled :
 CHRT-27339RE

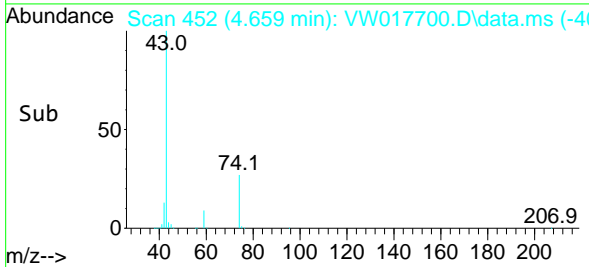
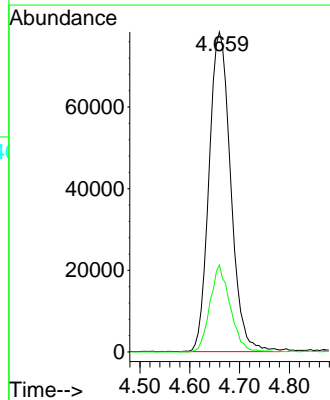
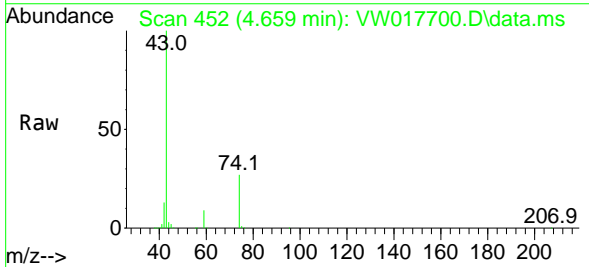


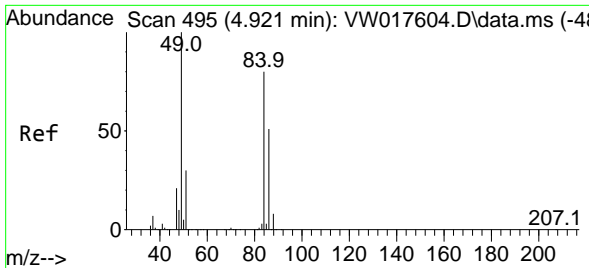
Tgt Ion: 43 Resp: 6643
 Ion Ratio Lower Upper
 43 100
 58 26.3 25.7 38.5



#18
 Methyl Acetate
 Concen: 581.84 ug/l
 RT: 4.659 min Scan# 452
 Delta R.T. -0.013 min
 Lab File: VW017700.D
 Acq: 22 Dec 2020 12:47

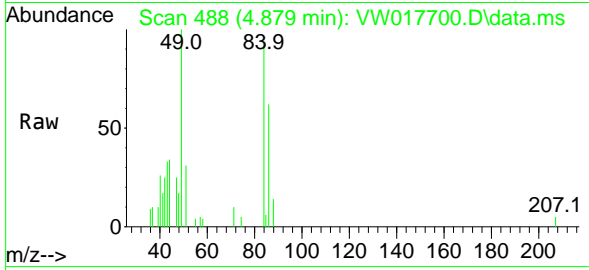
Tgt Ion: 43 Resp: 236480
 Ion Ratio Lower Upper
 43 100
 74 25.5 23.8 35.6





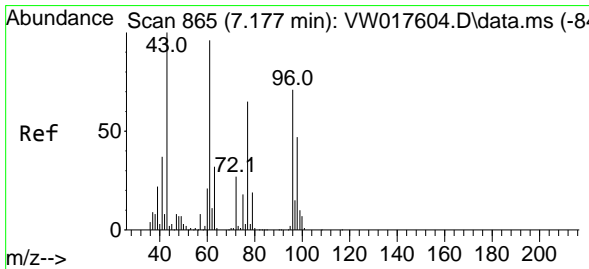
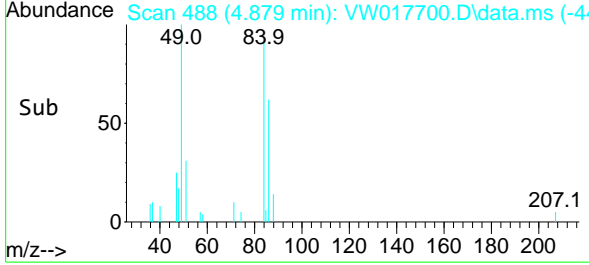
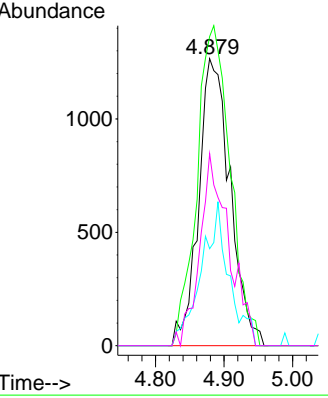
#20
 Methylene Chloride
 Concen: Below Cal
 RT: 4.879 min Scan# 488
 Delta R.T. -0.042 min
 Lab File: VW017700.D
 Acq: 22 Dec 2020 12:47

Instrument :
 MSVOA_W
ClientSampled :
 CHRT-27339RE



Tgt Ion: 84 Resp: 4031

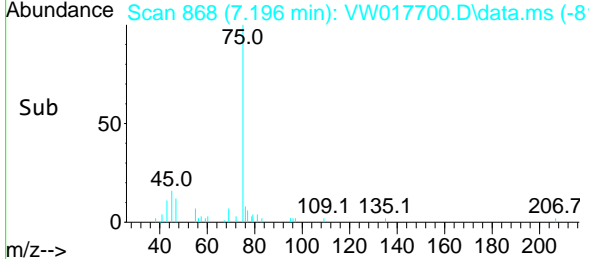
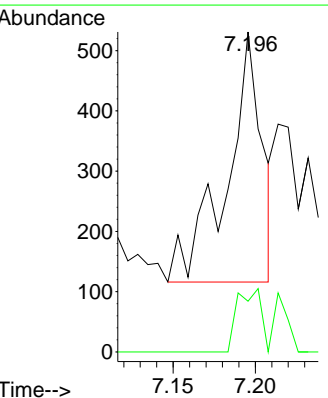
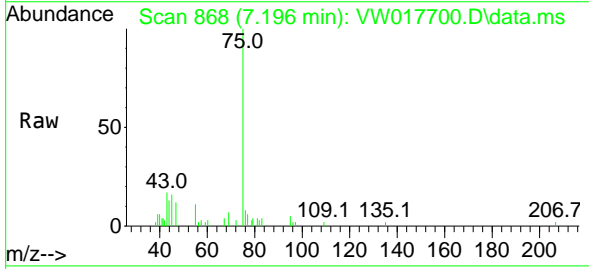
Ion	Ratio	Lower	Upper
84	100		
49	107.7	79.0	118.6
51	33.8	26.1	39.1
86	66.9	50.1	75.1

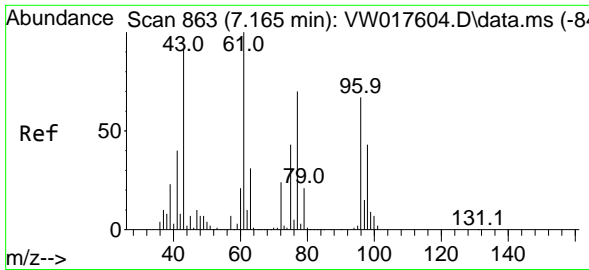


#25
 2-Butanone
 Concen: 2.34 ug/l
 RT: 7.196 min Scan# 868
 Delta R.T. 0.019 min
 Lab File: VW017700.D
 Acq: 22 Dec 2020 12:47

Tgt Ion: 43 Resp: 623

Ion	Ratio	Lower	Upper
43	100		
72	20.2	25.4	38.2#

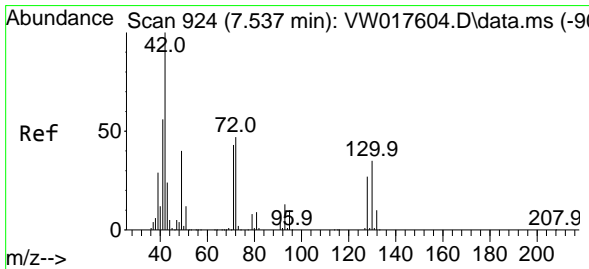
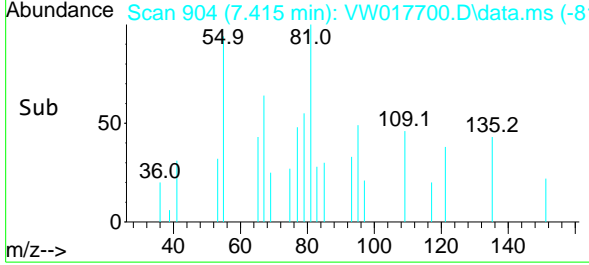
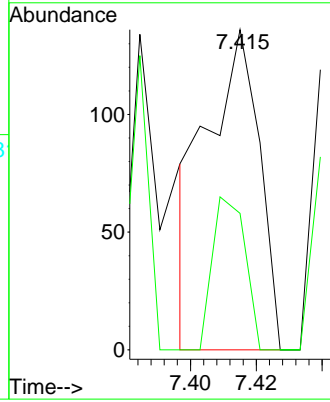
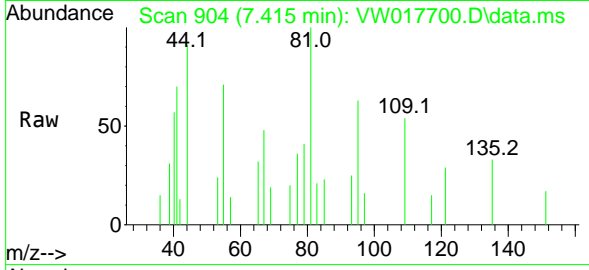




#26
 2,2-Dichloropropane
 Concen: Below Cal
 RT: 7.415 min Scan# 904
 Delta R.T. 0.250 min
 Lab File: VW017700.D
 Acq: 22 Dec 2020 12:47

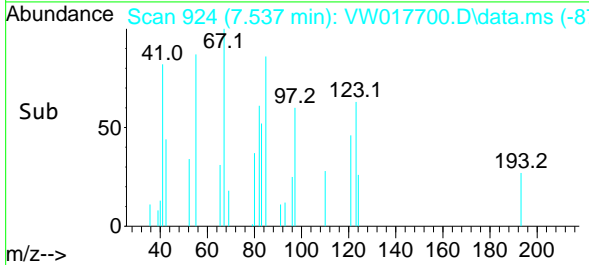
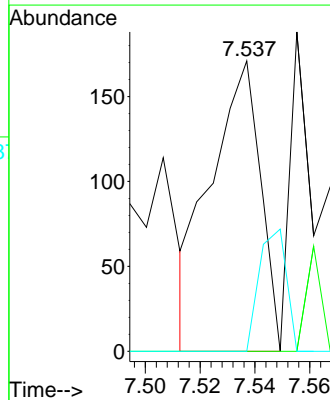
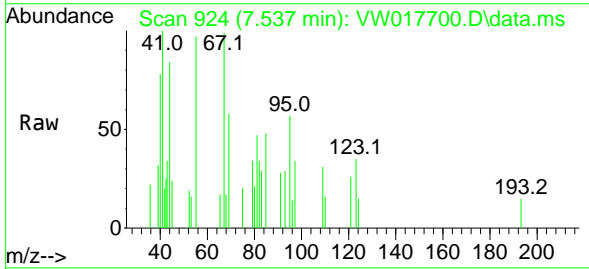
Instrument :
 MSVOA_W
 ClientSampled :
 CHRT-27339RE

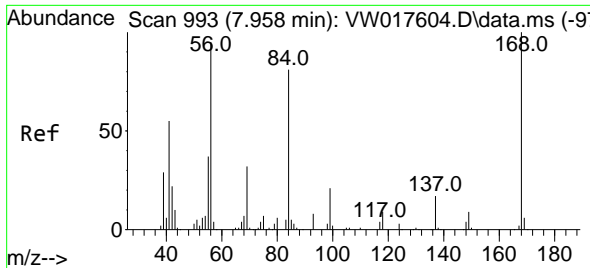
Tgt Ion: 77 Resp: 150
 Ion Ratio Lower Upper
 77 100
 97 30.0 12.4 37.4



#29
 Tetrahydrofuran
 Concen: 1.44 ug/l
 RT: 7.537 min Scan# 924
 Delta R.T. -0.000 min
 Lab File: VW017700.D
 Acq: 22 Dec 2020 12:47

Tgt Ion: 42 Resp: 216
 Ion Ratio Lower Upper
 42 100
 72 0.0 42.0 63.0#
 71 0.0 39.0 58.6#

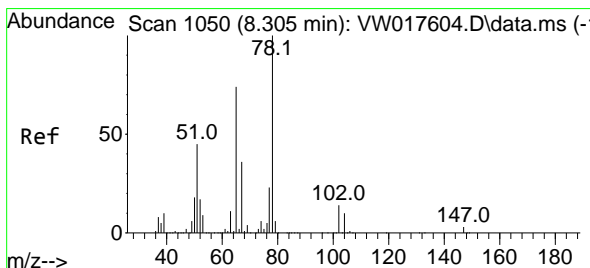
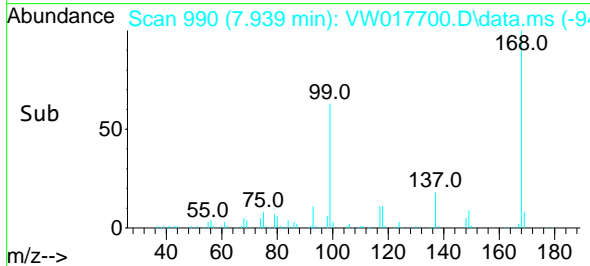
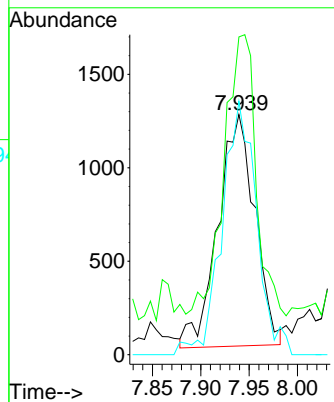
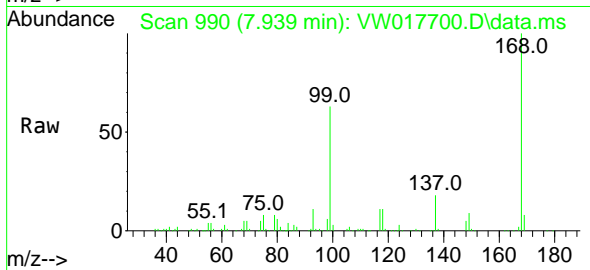




#31
 Cyclohexane
 Concen: 2.07 ug/l
 RT: 7.939 min Scan# 990
 Delta R.T. -0.019 min
 Lab File: VW017700.D
 Acq: 22 Dec 2020 12:47

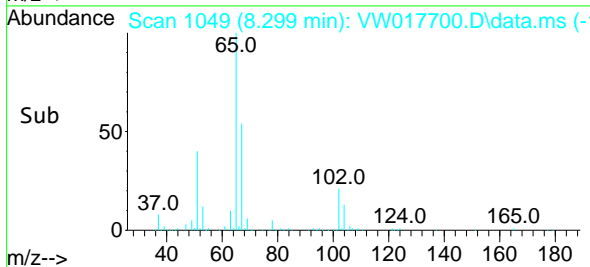
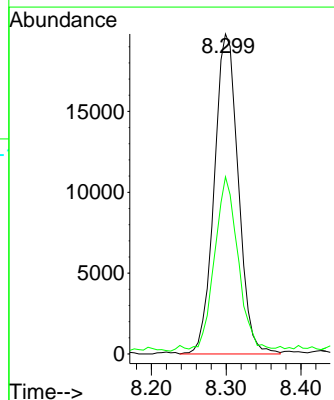
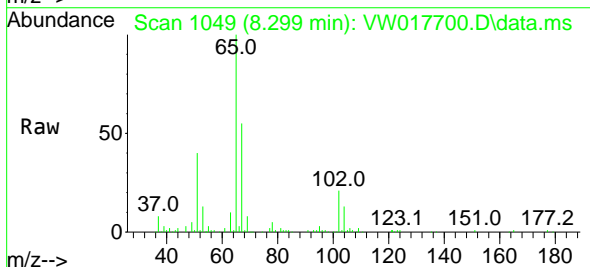
Instrument :
 MSVOA_W
 ClientSampled :
 CHRT-27339RE

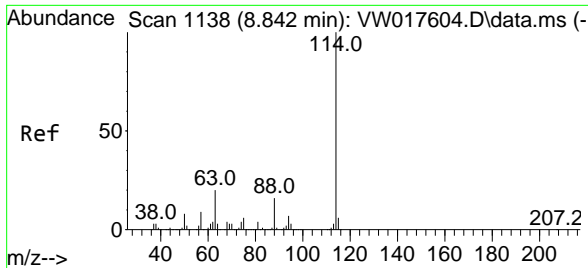
Tgt Ion: 56 Resp: 3293
 Ion Ratio Lower Upper
 56 100
 69 120.8 29.3 43.9#
 84 107.2 80.5 120.7



#33
 1,2-Dichloroethane-d4
 Concen: 48.16 ug/l
 RT: 8.299 min Scan# 1049
 Delta R.T. -0.006 min
 Lab File: VW017700.D
 Acq: 22 Dec 2020 12:47

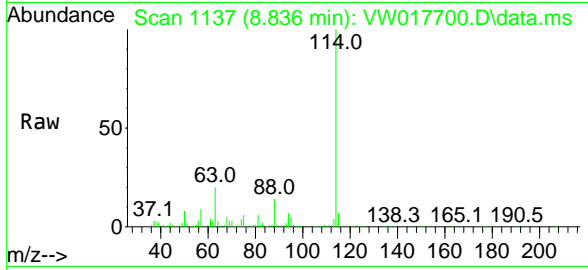
Tgt Ion: 65 Resp: 44263
 Ion Ratio Lower Upper
 65 100
 67 51.6 0.0 103.8





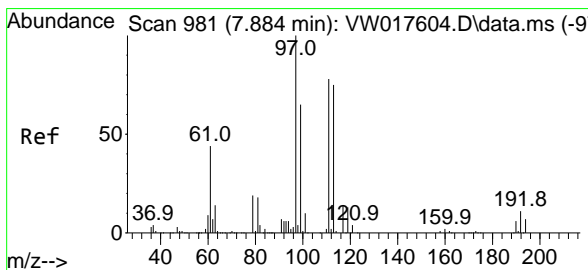
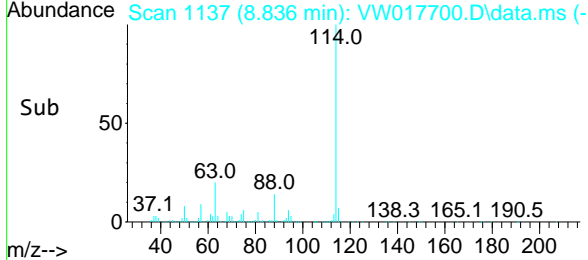
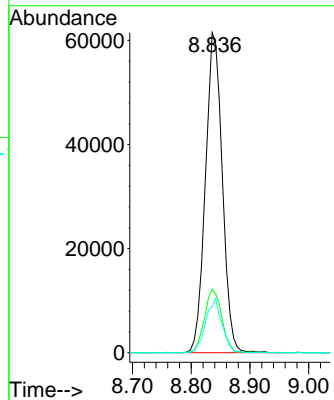
#34
 1,4-Difluorobenzene
 Concen: 50.00 ug/l
 RT: 8.836 min Scan# 1137
 Delta R.T. -0.006 min
 Lab File: VW017700.D
 Acq: 22 Dec 2020 12:47

Instrument :
 MSVOA_W
ClientSampled :
 CHRT-27339RE



Tgt Ion:114 Resp: 122720

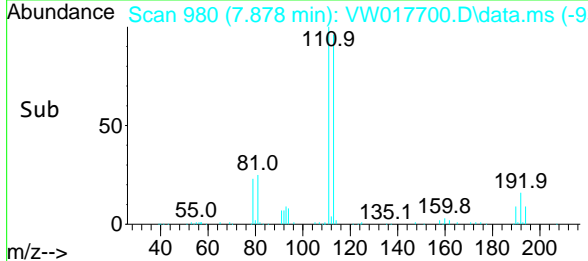
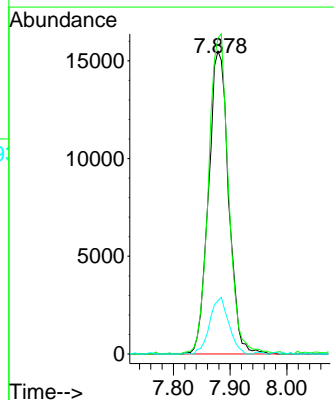
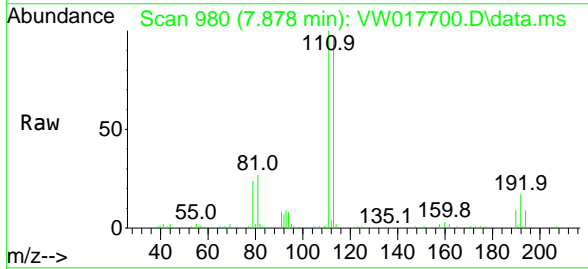
Ion	Ratio	Lower	Upper
114	100		
63	19.8	0.0	35.6
88	14.5	0.0	30.4

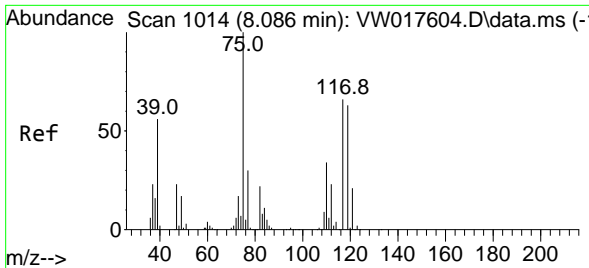


#35
 Dibromofluoromethane
 Concen: 46.91 ug/l
 RT: 7.878 min Scan# 980
 Delta R.T. -0.006 min
 Lab File: VW017700.D
 Acq: 22 Dec 2020 12:47

Tgt Ion:113 Resp: 38096

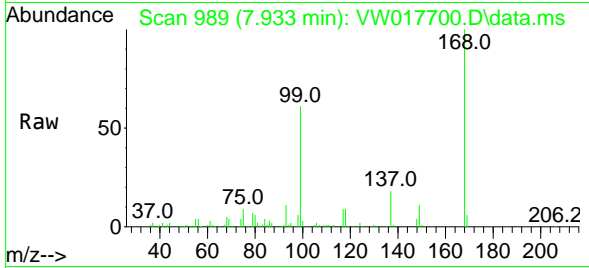
Ion	Ratio	Lower	Upper
113	100		
111	105.0	81.4	122.2
192	17.7	17.8	26.8#



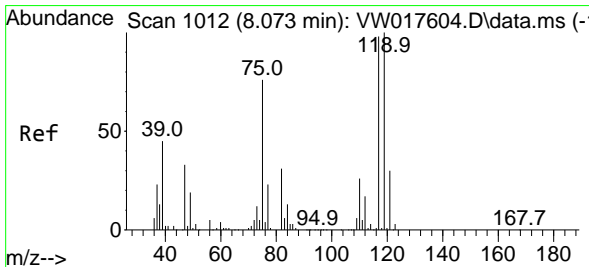
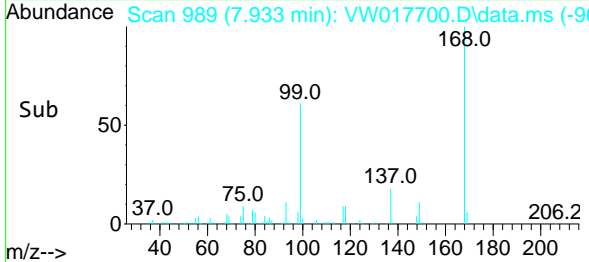
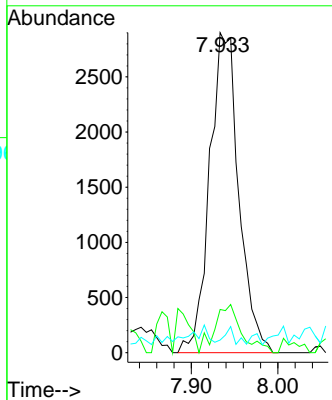


#36
 1,1-Dichloropropene
 Concen: 5.28 ug/l
 RT: 7.933 min Scan# 989
 Delta R.T. -0.153 min
 Lab File: VW017700.D
 Acq: 22 Dec 2020 12:47

Instrument :
 MSVOA_W
 ClientSampleId :
 CHRT-27339RE

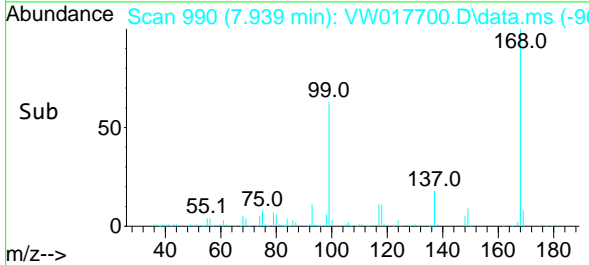
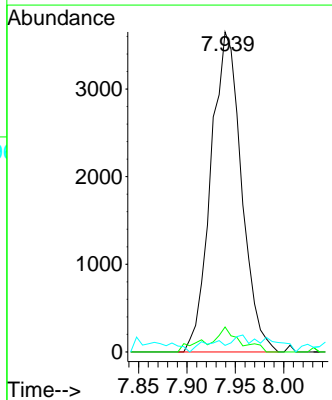
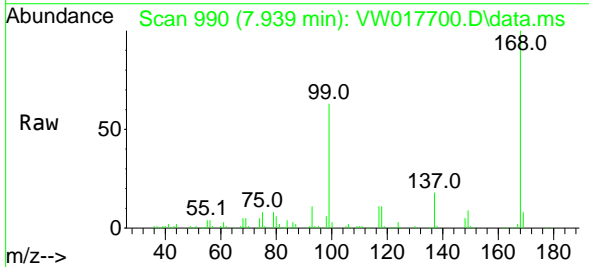


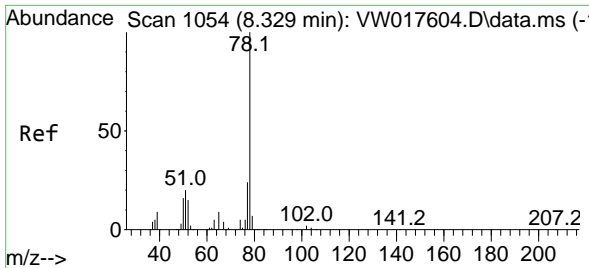
Tgt Ion: 75 Resp: 6780
 Ion Ratio Lower Upper
 75 100
 110 13.8 19.3 57.9#
 77 1.8 25.0 37.6#



#38
 Carbon Tetrachloride
 Concen: 6.20 ug/l
 RT: 7.939 min Scan# 990
 Delta R.T. -0.134 min
 Lab File: VW017700.D
 Acq: 22 Dec 2020 12:47

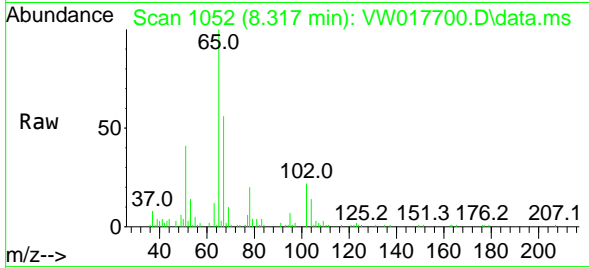
Tgt Ion:117 Resp: 8001
 Ion Ratio Lower Upper
 117 100
 119 7.8 81.6 122.4#
 121 0.2 25.7 38.5#



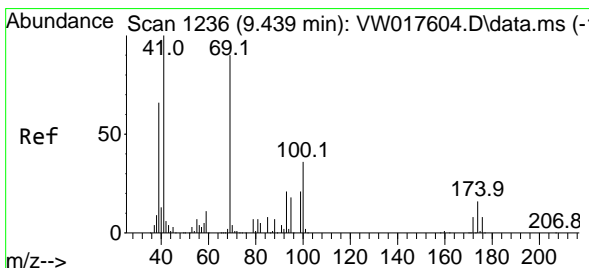
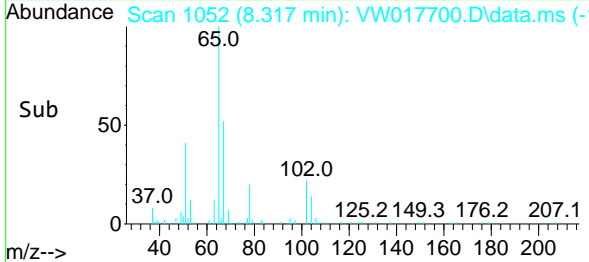
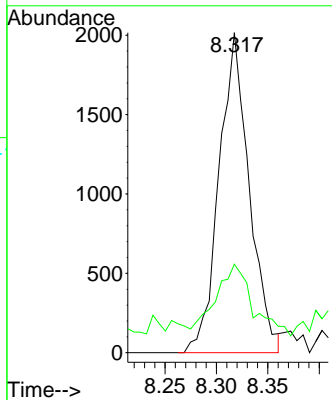


#40
Benzene
Concen: 1.21 ug/l
RT: 8.317 min Scan# 1052
Delta R.T. -0.012 min
Lab File: VW017700.D
Acq: 22 Dec 2020 12:47

Instrument :
MSVOA_W
ClientSampled :
CHRT-27339RE

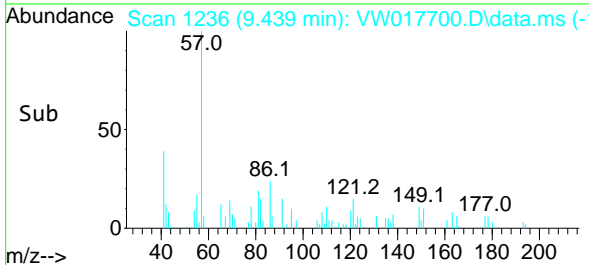
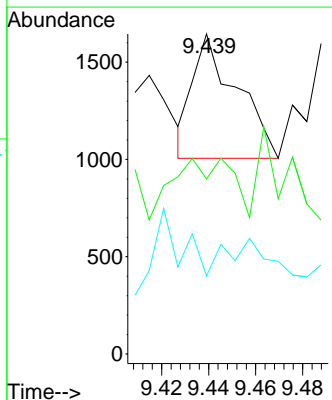
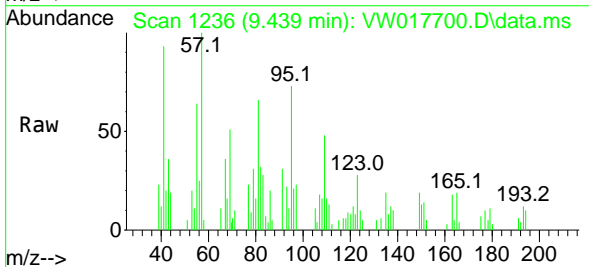


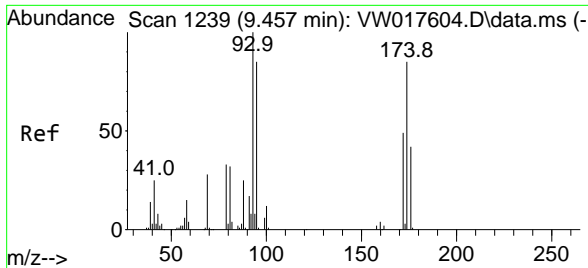
Tgt Ion: 78 Resp: 4118
Ion Ratio Lower Upper
78 100
77 19.4 18.5 27.7



#48
Methyl methacrylate
Concen: 1.68 ug/l
RT: 9.439 min Scan# 1236
Delta R.T. 0.000 min
Lab File: VW017700.D
Acq: 22 Dec 2020 12:47

Tgt Ion: 41 Resp: 831
Ion Ratio Lower Upper
41 100
69 65.7 83.5 125.3#
39 0.0 50.9 76.3#

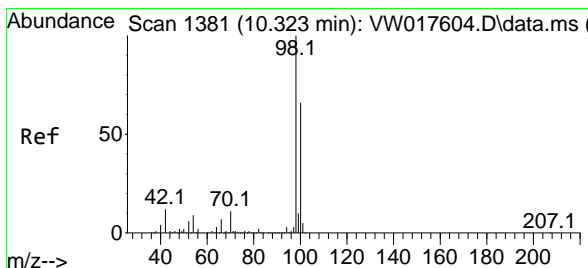
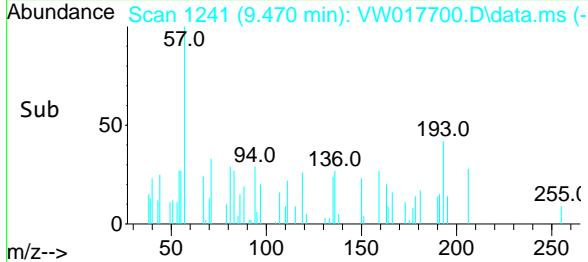
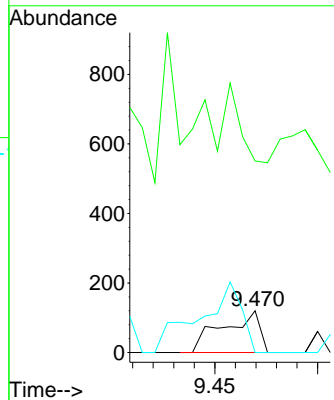
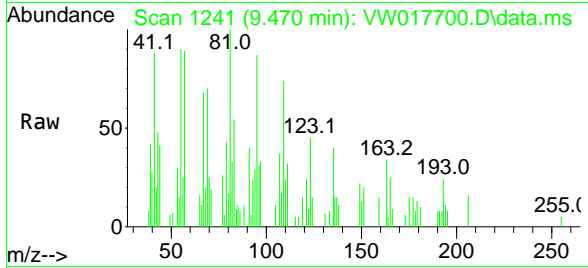




#49
 1,4-Dioxane
 Concen: 25.80 ug/l
 RT: 9.470 min Scan# 1241
 Delta R.T. 0.013 min
 Lab File: VW017700.D
 Acq: 22 Dec 2020 12:47

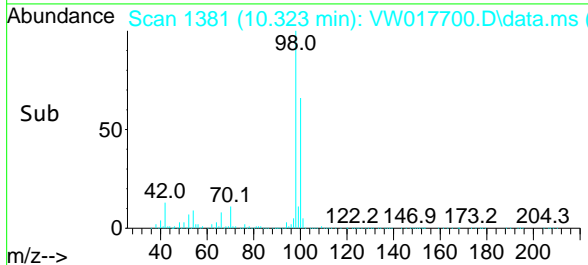
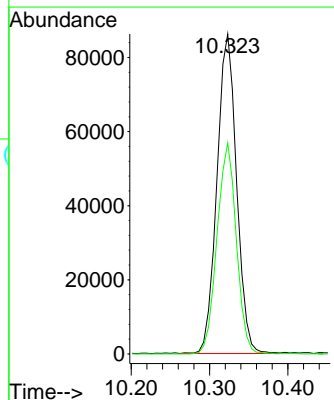
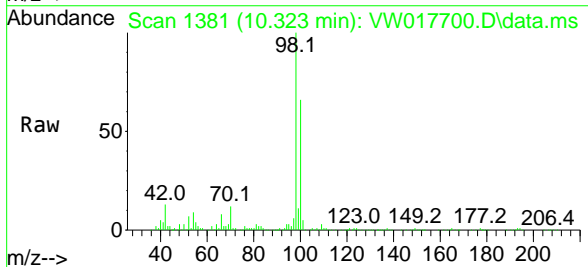
Instrument :
 MSVOA_W
 ClientSampled :
 CHRT-27339RE

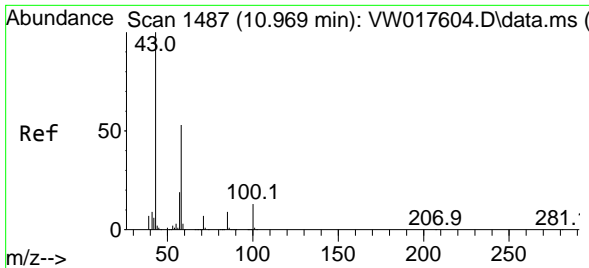
Tgt Ion: 88 Resp: 150
 Ion Ratio Lower Upper
 88 100
 43 0.0 0.0 0.0
 58 194.7 54.0 81.0#



#50
 Toluene-d8
 Concen: 47.51 ug/l
 RT: 10.323 min Scan# 1381
 Delta R.T. 0.000 min
 Lab File: VW017700.D
 Acq: 22 Dec 2020 12:47

Tgt Ion: 98 Resp: 150217
 Ion Ratio Lower Upper
 98 100
 100 64.9 53.3 79.9

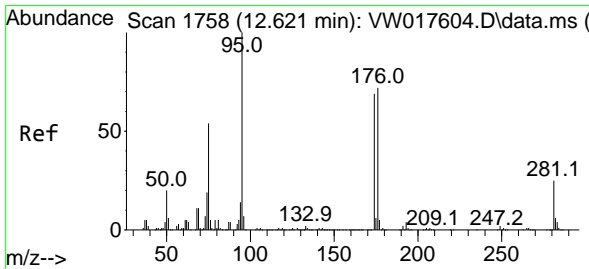
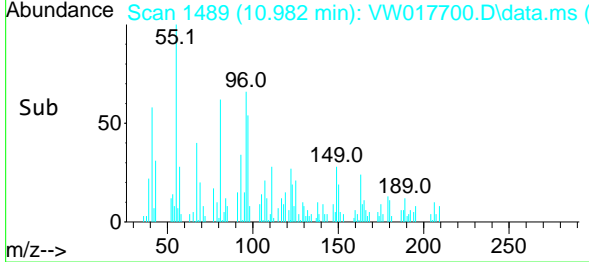
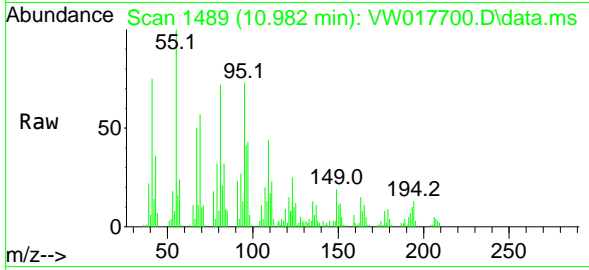




#59
 2-Hexanone
 Concen: 2.61 ug/l
 RT: 10.982 min Scan# 1489
 Delta R.T. 0.013 min
 Lab File: VW017700.D
 Acq: 22 Dec 2020 12:47

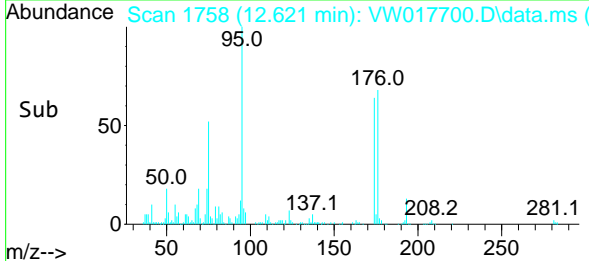
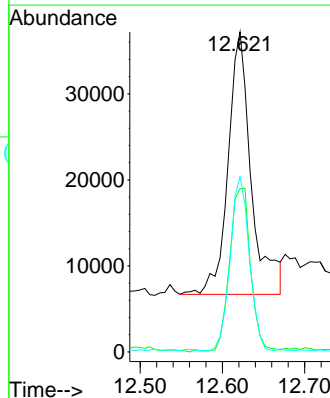
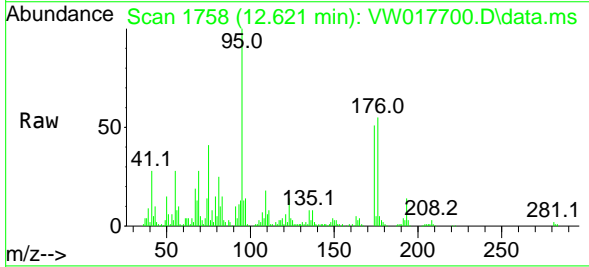
Instrument :
 MSVOA_W
 ClientSampled :
 CHRT-27339RE

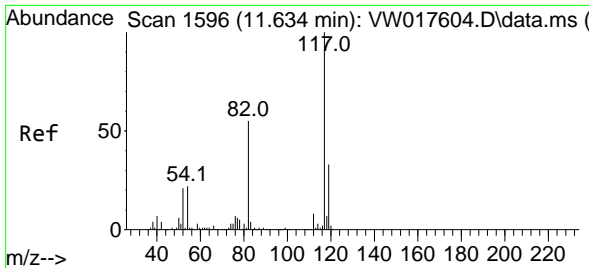
Tgt Ion: 43 Resp: 874
 Ion Ratio Lower Upper
 43 100
 58 34.4 29.5 88.5



#62
 4-Bromofluorobenzene
 Concen: 52.94 ug/l
 RT: 12.621 min Scan# 1758
 Delta R.T. 0.000 min
 Lab File: VW017700.D
 Acq: 22 Dec 2020 12:47

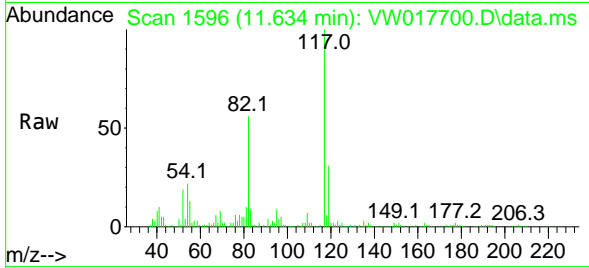
Tgt Ion: 95 Resp: 59767
 Ion Ratio Lower Upper
 95 100
 174 55.7 0.0 180.6
 176 54.8 0.0 177.6





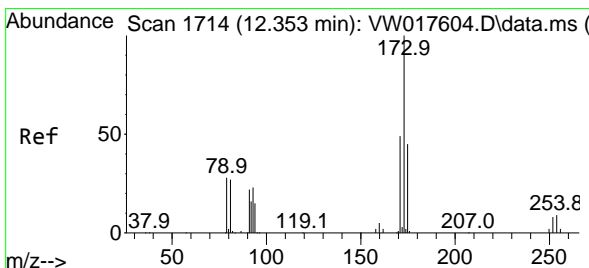
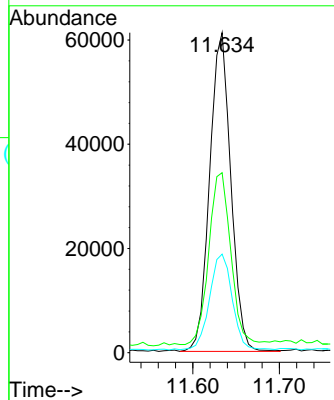
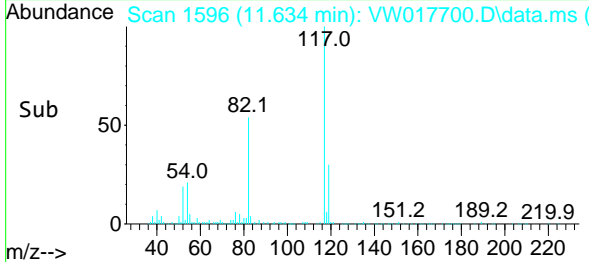
#63
 Chlorobenzene-d5
 Concen: 50.00 ug/l
 RT: 11.634 min Scan# 1596
 Delta R.T. -0.000 min
 Lab File: VW017700.D
 Acq: 22 Dec 2020 12:47

Instrument :
 MSVOA_W
 ClientSampleId :
 CHRT-27339RE

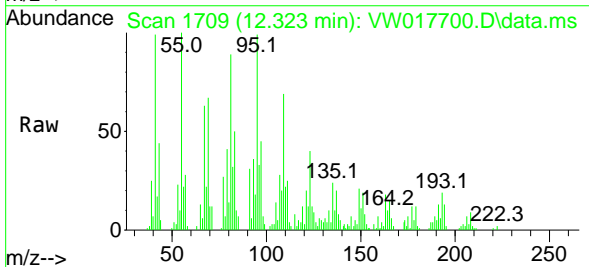


Tgt Ion:117 Resp: 103781

Ion	Ratio	Lower	Upper
117	100		
82	53.9	40.7	61.1
119	30.0	25.0	37.4

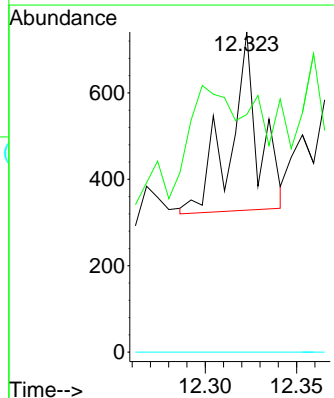
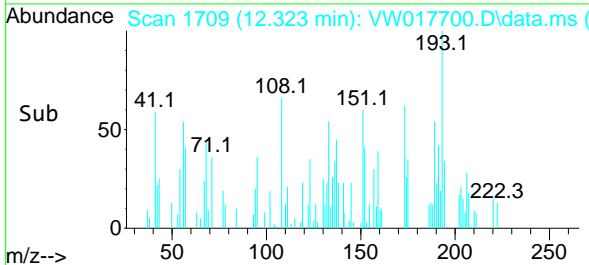


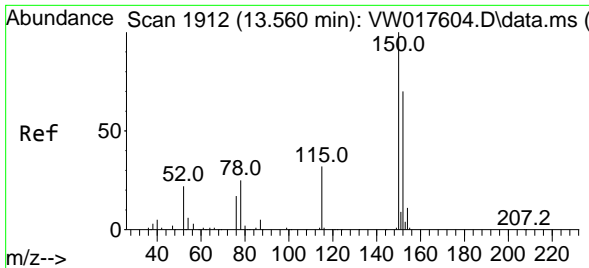
#71
 Bromoform
 Concen: 1.06 ug/l
 RT: 12.323 min Scan# 1709
 Delta R.T. -0.030 min
 Lab File: VW017700.D
 Acq: 22 Dec 2020 12:47



Tgt Ion:173 Resp: 449

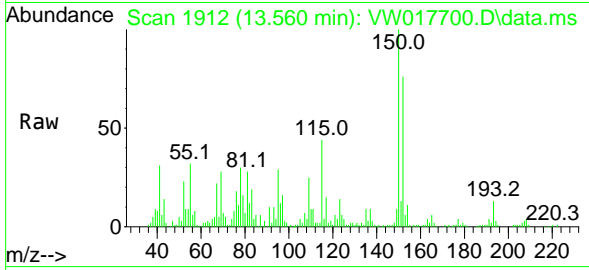
Ion	Ratio	Lower	Upper
173	100		
175	0.0	24.7	74.1#
254	0.0	0.1	0.1#



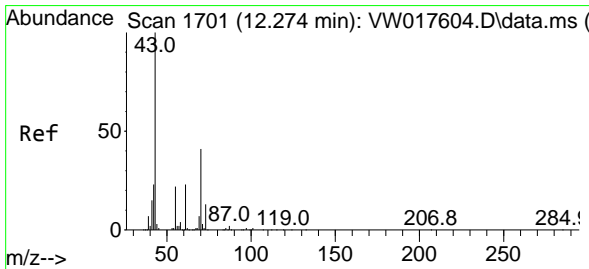
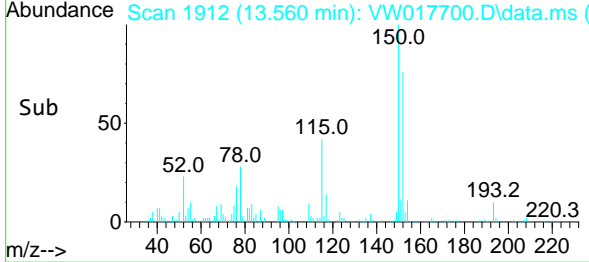
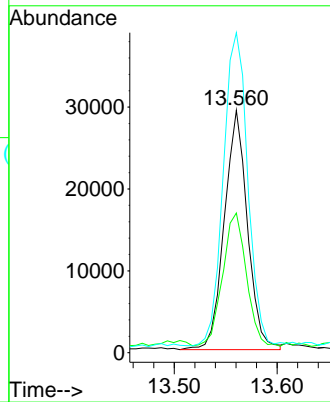


#72
 1,4-Dichlorobenzene-d4
 Concen: 50.00 ug/l
 RT: 13.560 min Scan# 1912
 Delta R.T. 0.000 min
 Lab File: VW017700.D
 Acq: 22 Dec 2020 12:47

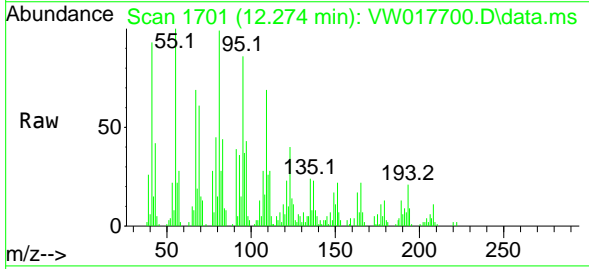
Instrument :
 MSVOA_W
 ClientSampled :
 CHRT-27339RE



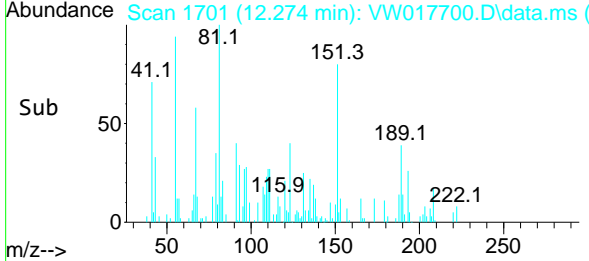
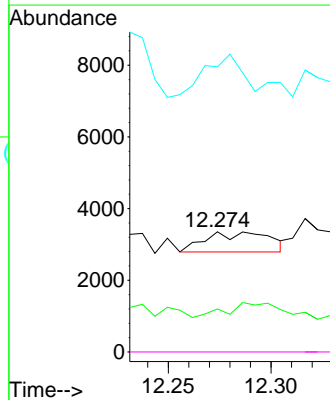
Tgt Ion:152 Resp: 45726
 Ion Ratio Lower Upper
 152 100
 115 57.1 27.9 83.7
 150 138.1 0.0 344.0

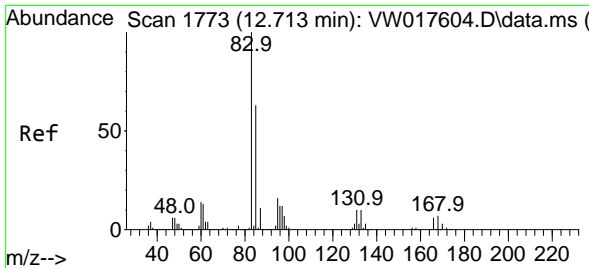


#74
 N-amy1 acetate
 Concen: 1.59 ug/l
 RT: 12.274 min Scan# 1701
 Delta R.T. -0.000 min
 Lab File: VW017700.D
 Acq: 22 Dec 2020 12:47



Tgt Ion: 43 Resp: 1203
 Ion Ratio Lower Upper
 43 100
 70 76.1 40.2 60.4#
 55 152.7 21.4 32.0#
 61 0.0 21.4 32.2#



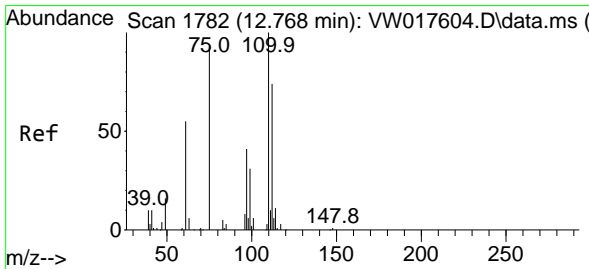
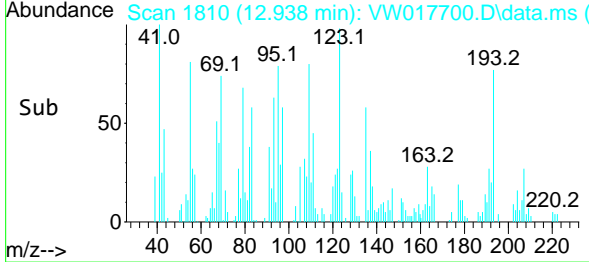
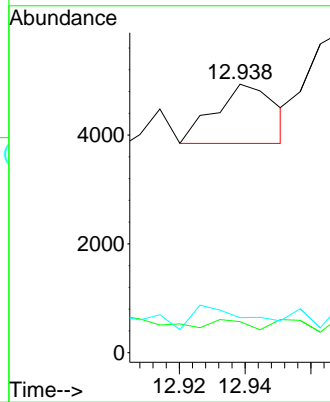
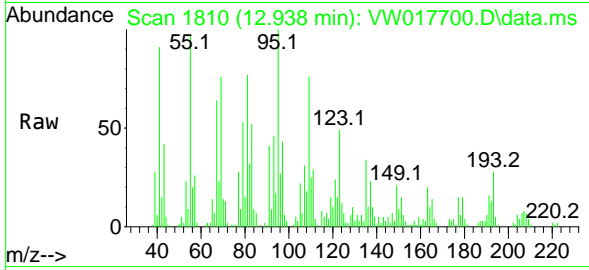


#75
 1,1,2-Tetrachloroethane
 Concen: 2.30 ug/l
 RT: 12.938 min Scan# 1810
 Delta R.T. 0.225 min
 Lab File: VW017700.D
 Acq: 22 Dec 2020 12:47

Instrument :
 MSVOA_W
 ClientSampled :
 CHRT-27339RE

Tgt Ion: 83 Resp: 1387

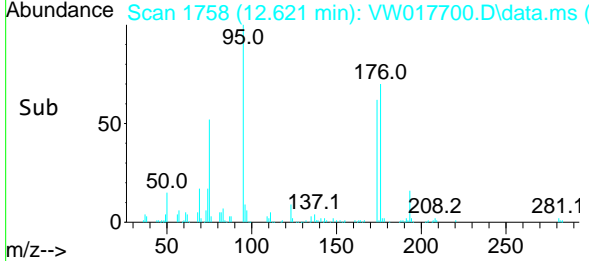
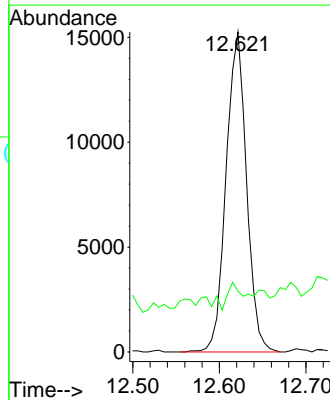
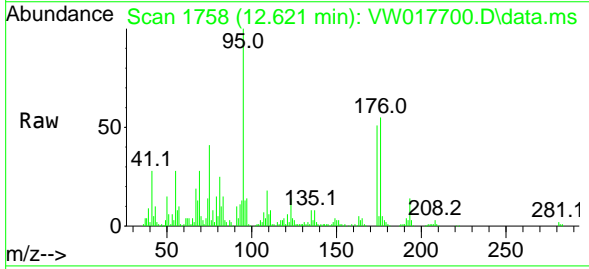
Ion	Ratio	Lower	Upper
83	100		
131	8.9	6.1	18.3
85	37.3	32.7	98.1

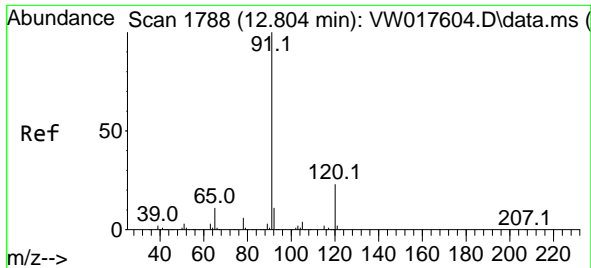


#76
 1,2,3-Trichloropropane
 Concen: 56.75 ug/l
 RT: 12.621 min Scan# 1758
 Delta R.T. -0.147 min
 Lab File: VW017700.D
 Acq: 22 Dec 2020 12:47

Tgt Ion: 75 Resp: 24981

Ion	Ratio	Lower	Upper
75	100		
77	5.4	178.8	536.3#

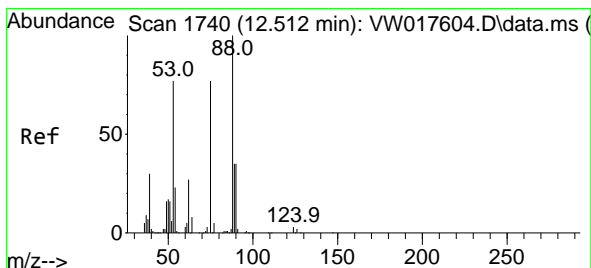
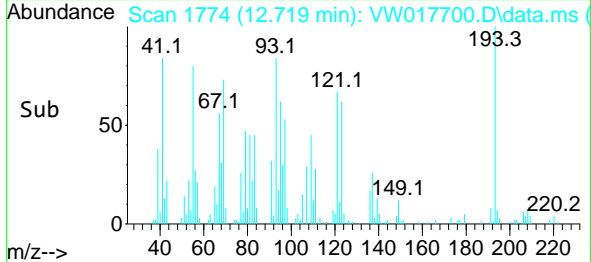
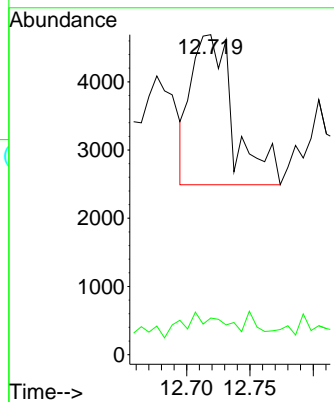
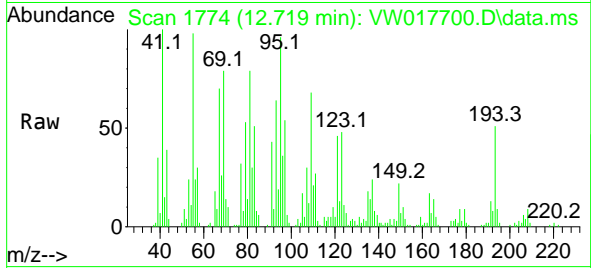




#78
 n-propylbenzene
 Concen: 1.19 ug/l
 RT: 12.719 min Scan# 1774
 Delta R.T. -0.085 min
 Lab File: VW017700.D
 Acq: 22 Dec 2020 12:47

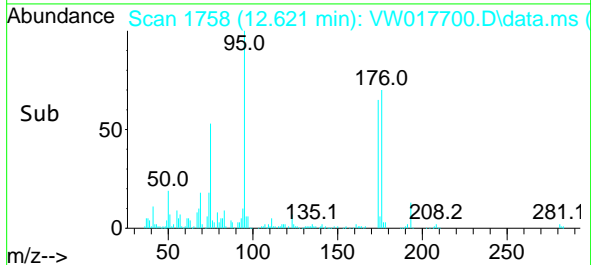
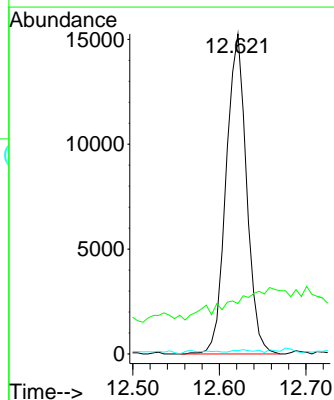
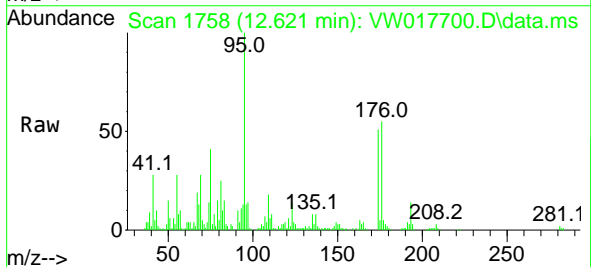
Instrument :
 MSVOA_W
 ClientSampled :
 CHRT-27339RE

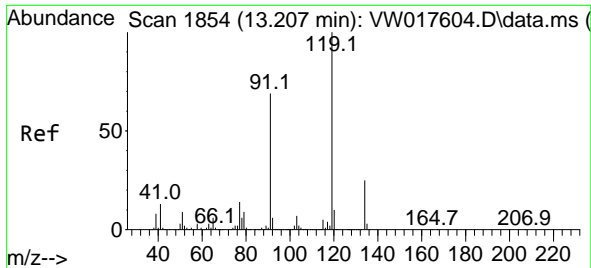
Tgt Ion: 91 Resp: 5115
 Ion Ratio Lower Upper
 91 100
 120 15.9 12.0 36.1



#81
 trans-1,4-Dichloro-2-butene
 Concen: 114.99 ug/l
 RT: 12.621 min Scan# 1758
 Delta R.T. 0.109 min
 Lab File: VW017700.D
 Acq: 22 Dec 2020 12:47

Tgt Ion: 75 Resp: 24981
 Ion Ratio Lower Upper
 75 100
 53 0.0 77.0 115.4#
 89 1.0 38.7 58.1#

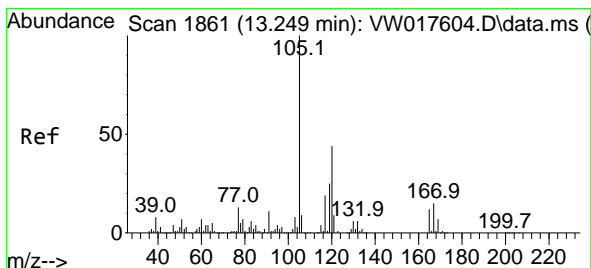
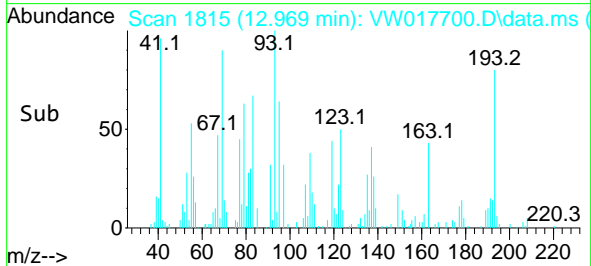
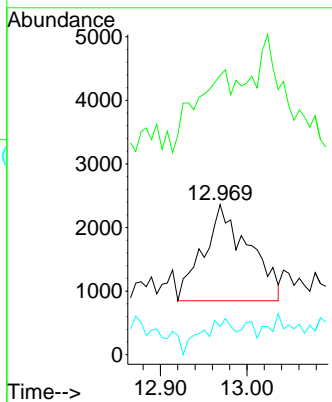
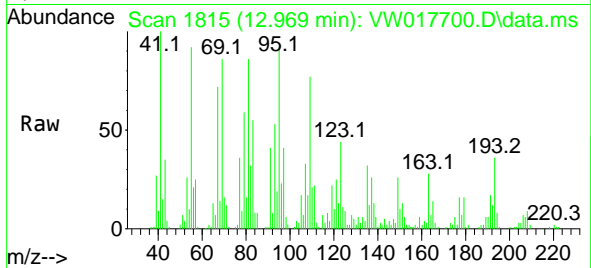




#83
 tert-Butylbenzene
 Concen: 2.10 ug/l
 RT: 12.969 min Scan# 1815
 Delta R.T. -0.238 min
 Lab File: VW017700.D
 Acq: 22 Dec 2020 12:47

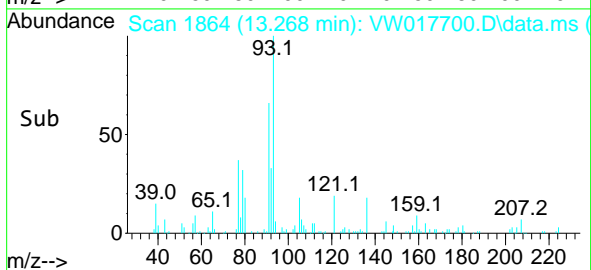
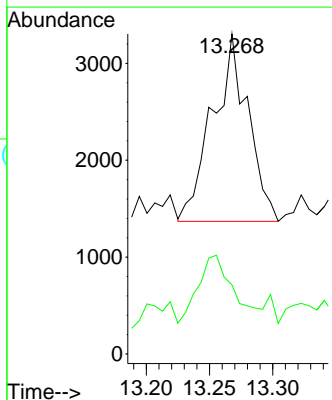
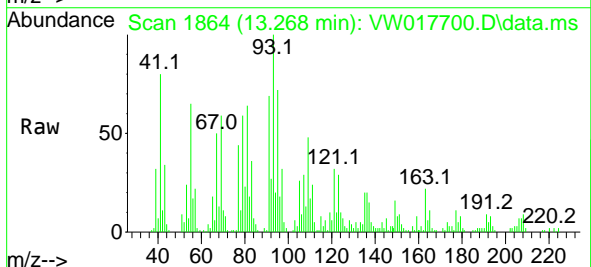
Instrument :
 MSVOA_W
 ClientSampled :
 CHRT-27339RE

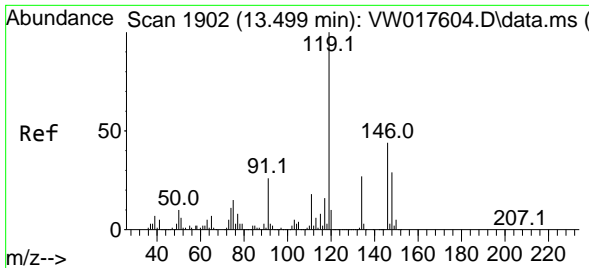
Tgt Ion	Resp	Lower	Upper
119	5497		
91	44.7	31.3	93.9
134	26.0	14.0	42.0



#84
 1,2,4-Trimethylbenzene
 Concen: 1.25 ug/l
 RT: 13.268 min Scan# 1864
 Delta R.T. 0.019 min
 Lab File: VW017700.D
 Acq: 22 Dec 2020 12:47

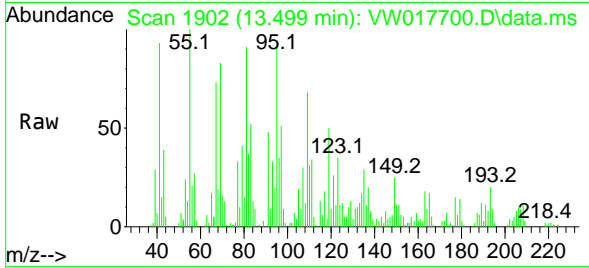
Tgt Ion	Resp	Lower	Upper
105	3764		
105	100		
120	36.6	23.4	70.0





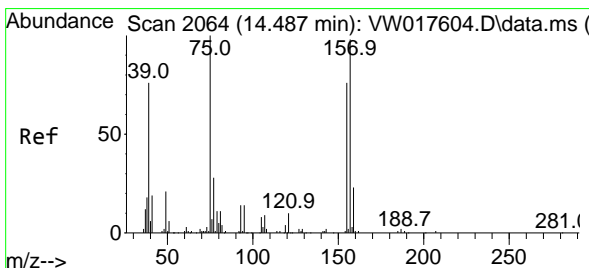
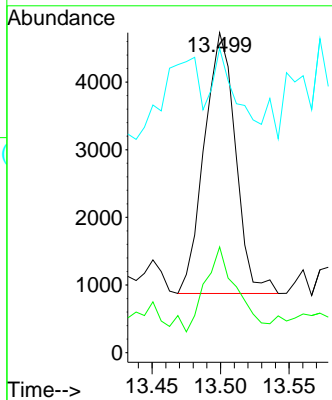
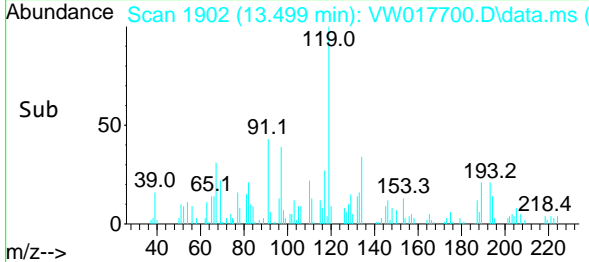
#86
 p-Isopropyltoluene
 Concen: 1.85 ug/l
 RT: 13.499 min Scan# 1902
 Delta R.T. 0.000 min
 Lab File: VW017700.D
 Acq: 22 Dec 2020 12:47

Instrument :
 MSVOA_W
 ClientSampled :
 CHRT-27339RE

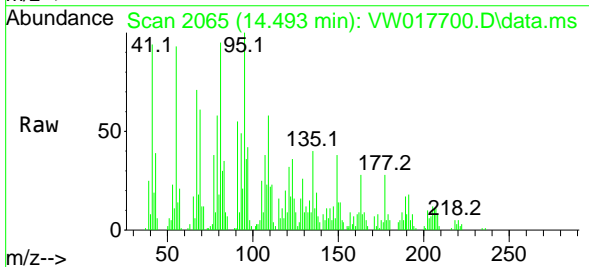


Tgt Ion:119 Resp: 6131

Ion	Ratio	Lower	Upper
119	100		
134	33.6	13.8	41.3
91	17.5	11.3	33.9

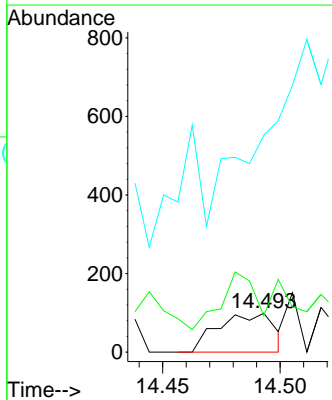
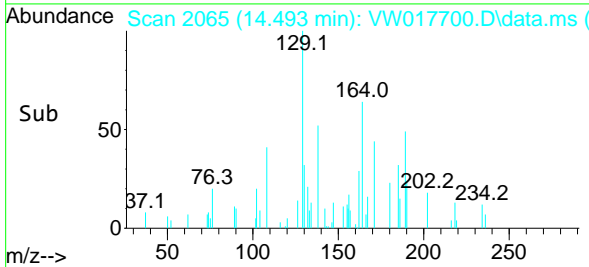


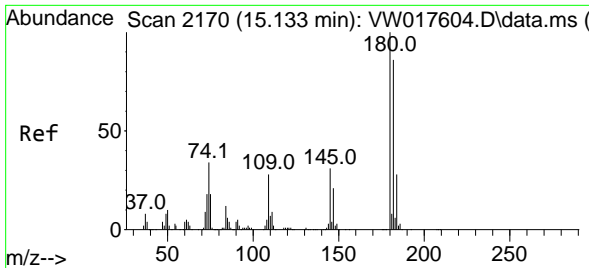
#92
 1,2-Dibromo-3-Chloropropane
 Concen: 1.49 ug/l
 RT: 14.493 min Scan# 2065
 Delta R.T. 0.006 min
 Lab File: VW017700.D
 Acq: 22 Dec 2020 12:47



Tgt Ion: 75 Resp: 163

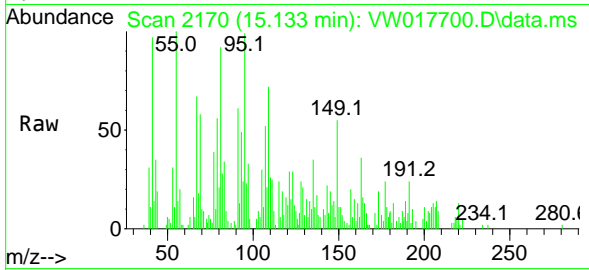
Ion	Ratio	Lower	Upper
75	100		
155	104.9	47.6	142.8
157	0.0	62.2	186.6#



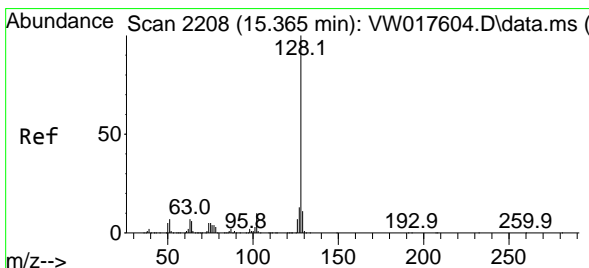
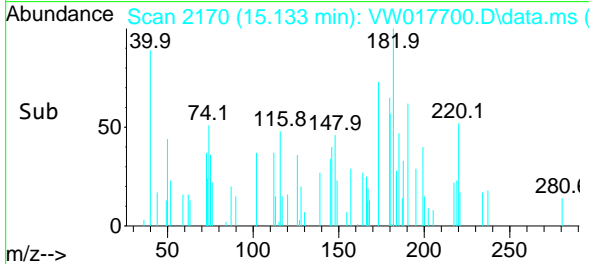
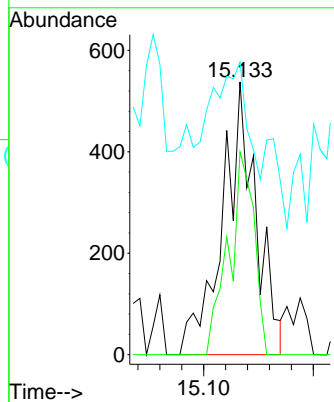


#93
 1,2,4-Trichlorobenzene
 Concen: 1.30 ug/l
 RT: 15.133 min Scan# 2170
 Delta R.T. 0.000 min
 Lab File: VW017700.D
 Acq: 22 Dec 2020 12:47

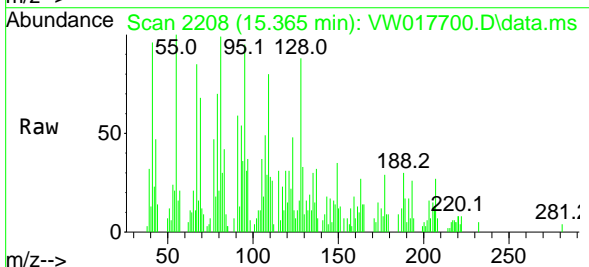
Instrument :
 MSVOA_W
 ClientSampled :
 CHRT-27339RE



Tgt Ion:180 Resp: 1144
 Ion Ratio Lower Upper
 180 100
 182 55.7 48.3 144.9
 145 42.8 14.9 44.5



#95
 Naphthalene
 Concen: 1.52 ug/l
 RT: 15.365 min Scan# 2208
 Delta R.T. -0.000 min
 Lab File: VW017700.D
 Acq: 22 Dec 2020 12:47



Tgt Ion:128 Resp: 2720
 Ion Ratio Lower Upper
 128 100
 127 10.4 10.4 15.6
 129 9.0 8.6 12.8

