

Data Path : Z:\VOASRV\HPCHEM1\MSVOA W\DATA\VW011420\
 Data File : VW014628.D
 Acq On : 14 Jan 2020 13:03
 Operator : SY/VA
 Sample : L1109-02
 Misc : 5.05G/10ML/MSVOA W/SOIL
 ALS Vial : 1 Sample Multiplier: 1

Instrument :
 MSVOA_W
 ClientSampled :

Integration Parameters: LSCINT.P

Integrator: RTE
 Smoothing : OFF
 Sampling : 1
 Start Thrs: 0.2
 Stop Thrs : 0

Filtering: 5
 Min Area: 0 % of largest Peak
 Max Peaks: 100
 Peak Location: TOP

If leading or trailing edge < 100 prefer < Baseline drop else tangent >
 Peak separation: 5

Method : Z:\VOASRV\HPCHEM1\MSVOA_W\METHOD\SOM2WLM122719S.M
 Title : VOC Analysis

Signal : TIC

peak #	R.T. min	first scan	max scan	last scan	PK TY	peak height	corr. area	corr. % max.	% of total
1	2.160	36	42	47	rBV	14596	29902	0.98%	0.144%
2	2.349	66	73	84	rVB	287959	495544	16.30%	2.382%
3	2.885	154	161	174	rVB	188416	439847	14.47%	2.115%
4	3.538	265	268	272	rVB3	1619	1856	0.06%	0.009%
5	3.580	272	275	276	rBV3	875	975	0.03%	0.005%
6	3.715	295	297	300	rVB3	1444	1064	0.04%	0.005%
7	4.013	334	346	359	rBV	426403	1204286	39.62%	5.790%
8	4.123	359	364	375	rVB2	12510	33928	1.12%	0.163%
9	4.385	399	407	416	rBV6	3081	10647	0.35%	0.051%
10	4.452	416	418	424	rVB6	923	1229	0.04%	0.006%
11	4.666	449	453	457	rVB6	723	1112	0.04%	0.005%
12	4.909	482	493	504	rBV2	37653	119210	3.92%	0.573%
13	5.245	544	548	552	rVB2	803	1228	0.04%	0.006%
14	5.428	575	578	583	rVB3	580	977	0.03%	0.005%
15	5.751	626	631	633	rBV2	1024	1671	0.05%	0.008%
16	5.934	655	661	662	rBV4	4366	7251	0.24%	0.035%
17	6.202	701	705	707	rVV4	763	920	0.03%	0.004%
18	6.251	709	713	717	rVB4	664	965	0.03%	0.005%
19	6.665	776	781	783	rBV	722	1029	0.03%	0.005%
20	6.903	817	820	824	rBV3	898	1201	0.04%	0.006%
21	7.074	839	848	853	rBV	70061	197968	6.51%	0.952%
22	7.342	890	892	897	rVB5	982	1583	0.05%	0.008%
23	7.385	897	899	902	rVB2	1084	883	0.03%	0.004%
24	7.433	902	907	908	rBV3	687	1113	0.04%	0.005%
25	7.531	916	923	925	rBV5	1655	3279	0.11%	0.016%
26	7.641	930	941	955	rBV	480291	1191047	39.19%	5.726%
27	7.732	955	956	962	rVB4	756	983	0.03%	0.005%
28	7.952	983	992	998	rVB9	2653	6502	0.21%	0.031%
29	8.025	1002	1004	1006	rBV2	814	971	0.03%	0.005%
30	8.061	1006	1010	1014	rVB5	828	1484	0.05%	0.007%
31	8.275	1034	1045	1062	rBV2	1030546	3039421	100.00%	14.612%
32	8.683	1110	1112	1113	rBV2	961	886	0.03%	0.004%
33	8.695	1113	1114	1118	rVB3	1520	1287	0.04%	0.006%
34	8.842	1128	1138	1151	rBV	964972	1947679	64.08%	9.363%

Data Path : Z:\VOASRV\HPCHEM1\MSVOA W\DATA\VW011420\
 Data File : VW014628.D
 Acq On : 14 Jan 2020 13:03
 Operator : SY/VA
 Sample : L1109-02
 Misc : 5.05G/10ML/MSVOA W/SOIL
 ALS Vial : 1 Sample Multiplier: 1

Instrument :
 MSVOA_W
 ClientSampleId :

Integration Parameters: LSCINT.P

Integrator: RTE
 Smoothing : OFF
 Sampling : 1
 Start Thrs: 0.2
 Stop Thrs : 0

Filtering: 5
 Min Area: 0 % of largest Peak
 Max Peaks: 100
 Peak Location: TOP

If leading or trailing edge < 100 prefer < Baseline drop else tangent >
 Peak separation: 5

Method : Z:\VOASRV\HPCHEM1\MSVOA_W\METHOD\SOM2WLM122719S.M
 Title : VOC Analysis

35	8.927	1151	1152	1155	rVB2	1383	1041	0.03%	0.005%
36	9.134	1185	1186	1191	rVB3	817	1270	0.04%	0.006%
37	9.177	1191	1193	1195	rBV4	868	989	0.03%	0.005%
38	9.201	1195	1197	1200	rVV2	760	1046	0.03%	0.005%
39	9.268	1200	1208	1231	rVV	640357	1345829	44.28%	6.470%
40	9.573	1255	1258	1259	rBV2	906	924	0.03%	0.004%
41	9.805	1294	1296	1299	rBV2	695	913	0.03%	0.004%
42	9.872	1304	1307	1309	rBV2	821	1089	0.04%	0.005%
43	9.890	1309	1310	1316	rVB2	1021	933	0.03%	0.004%
44	9.963	1319	1322	1324	rBV3	941	1005	0.03%	0.005%
45	10.030	1324	1333	1344	rBV	325313	602617	19.83%	2.897%
46	10.213	1357	1363	1369	rBV4	5326	9650	0.32%	0.046%
47	10.323	1372	1381	1387	rBV	1409335	2502730	82.34%	12.032%
48	10.384	1387	1391	1399	rVV	59749	109562	3.60%	0.527%
49	10.439	1399	1400	1403	rVB3	1530	964	0.03%	0.005%
50	10.506	1403	1411	1415	rBV7	2286	6477	0.21%	0.031%
51	10.573	1415	1422	1433	rBV	199821	360274	11.85%	1.732%
52	10.701	1438	1443	1450	rVV	37945	65376	2.15%	0.314%
53	10.750	1450	1451	1456	rVB5	1919	1842	0.06%	0.009%
54	10.860	1464	1469	1473	rVV5	2889	4778	0.16%	0.023%
55	10.921	1473	1479	1489	rBV	250477	433241	14.25%	2.083%
56	11.061	1496	1502	1510	rBV2	31942	55458	1.82%	0.267%
57	11.177	1516	1521	1525	rVB6	2773	4502	0.15%	0.022%
58	11.225	1525	1529	1536	rVB7	2280	3610	0.12%	0.017%
59	11.439	1557	1564	1569	rVB2	23275	40835	1.34%	0.196%
60	11.500	1569	1574	1575	rBV3	651	876	0.03%	0.004%
61	11.628	1587	1595	1607	rBV	1203693	2037715	67.04%	9.796%
62	11.731	1607	1612	1616	rBV4	5060	9249	0.30%	0.044%
63	11.835	1623	1629	1640	rVB2	21766	48112	1.58%	0.231%
64	12.030	1658	1661	1663	rBV2	760	891	0.03%	0.004%
65	12.134	1671	1678	1679	rBV3	2457	3958	0.13%	0.019%
66	12.164	1679	1683	1690	rVB3	13670	24552	0.81%	0.118%
67	12.243	1693	1696	1702	rVB6	1463	2833	0.09%	0.014%
68	12.335	1708	1711	1712	rBV2	2195	2355	0.08%	0.011%
69	12.463	1728	1732	1739	rBV5	4006	7048	0.23%	0.034%
70	12.609	1749	1756	1762	rBV	79086	136734	4.50%	0.657%
71	12.689	1762	1769	1776	rBV	394779	650131	21.39%	3.125%

Data Path : Z:\VOASRV\HPCHEM1\MSVOA W\DATA\VW011420\
 Data File : VW014628.D
 Acq On : 14 Jan 2020 13:03
 Operator : SY/VA
 Sample : L1109-02
 Misc : 5.05G/10ML/MSVOA W/SOIL
 ALS Vial : 1 Sample Multiplier: 1

Instrument :
 MSVOA_W
 ClientSampleId :

Integration Parameters: LSCINT.P

Integrator: RTE
 Smoothing : OFF Filtering: 5
 Sampling : 1 Min Area: 0 % of largest Peak
 Start Thrs: 0.2 Max Peaks: 100
 Stop Thrs : 0 Peak Location: TOP

If leading or trailing edge < 100 prefer < Baseline drop else tangent >
 Peak separation: 5

Method : Z:\VOASRV\HPCHEM1\MSVOA_W\METHOD\SOM2WLM122719S.M
 Title : VOC Analysis

72	12.762	1776	1781	1788	rVB4	11374	25981	0.85%	0.125%
73	12.865	1793	1798	1801	rVV3	6648	11503	0.38%	0.055%
74	12.932	1805	1809	1816	rVV2	34400	62137	2.04%	0.299%
75	12.987	1816	1818	1821	rVB3	2241	2544	0.08%	0.012%
76	13.036	1823	1826	1828	rBV3	1370	1641	0.05%	0.008%
77	13.164	1844	1847	1849	rBV3	1881	2320	0.08%	0.011%
78	13.249	1855	1861	1864	rBV	18941	31567	1.04%	0.152%
79	13.292	1865	1868	1874	rVB3	15754	25520	0.84%	0.123%
80	13.408	1882	1887	1891	rBV6	4187	7326	0.24%	0.035%
81	13.475	1894	1898	1901	rVV3	10246	17297	0.57%	0.083%
82	13.554	1905	1911	1925	rVV	850406	1404072	46.20%	6.750%
83	13.755	1939	1944	1947	rBV5	10540	19339	0.64%	0.093%
84	13.853	1953	1960	1967	rBV	749275	1285026	42.28%	6.178%
85	13.938	1970	1974	1980	rVB2	24734	44310	1.46%	0.213%
86	14.011	1984	1986	1987	rVV2	5256	4443	0.15%	0.021%
87	14.066	1991	1995	2003	rVB2	41604	79708	2.62%	0.383%
88	14.194	2012	2016	2022	rBV6	7814	18154	0.60%	0.087%
89	14.328	2034	2038	2042	rBV5	10267	16444	0.54%	0.079%
90	14.456	2056	2059	2063	rBV2	10650	13877	0.46%	0.067%
91	14.627	2082	2087	2093	rVB5	8274	16318	0.54%	0.078%
92	14.688	2095	2097	2099	rVV3	3987	3714	0.12%	0.018%
93	14.725	2099	2103	2108	rVB6	12260	18147	0.60%	0.087%
94	14.792	2109	2114	2120	rBV2	16379	32950	1.08%	0.158%
95	14.944	2135	2139	2148	rBV7	9441	19934	0.66%	0.096%
96	15.176	2173	2177	2184	rVB8	5036	9897	0.33%	0.048%
97	15.365	2202	2208	2214	rBV	107508	181033	5.96%	0.870%
98	15.438	2215	2220	2226	rVV	53997	94984	3.13%	0.457%
99	16.438	2379	2384	2392	rVB2	23961	49114	1.62%	0.236%
100	16.639	2412	2417	2424	rVB2	30242	70444	2.32%	0.339%

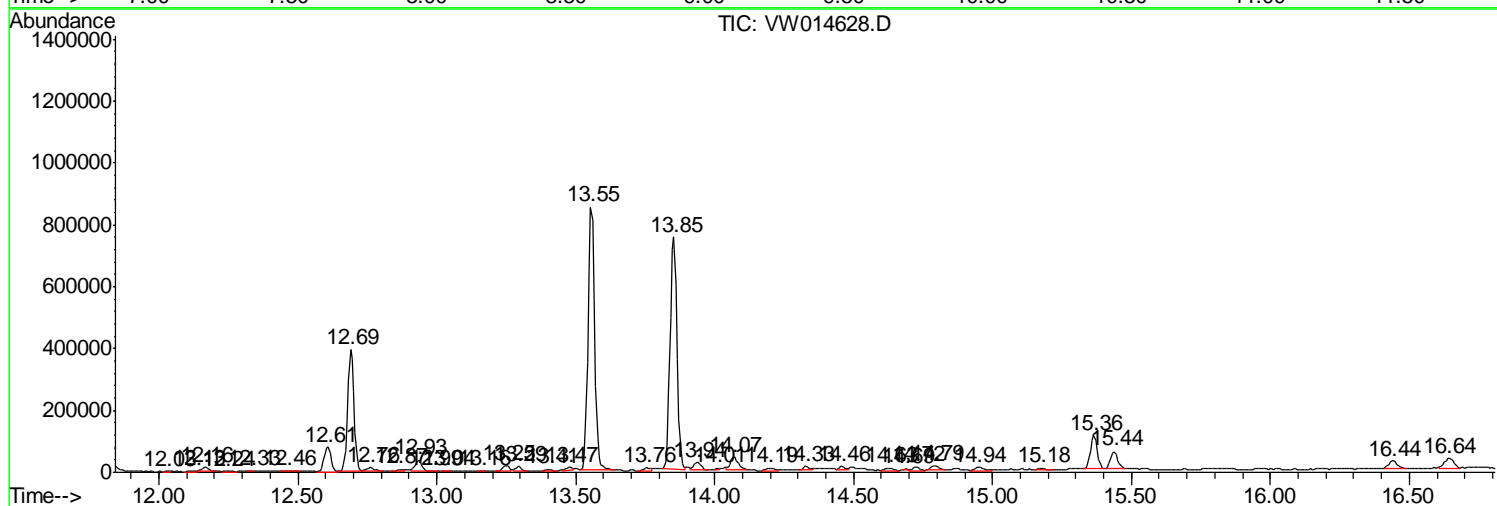
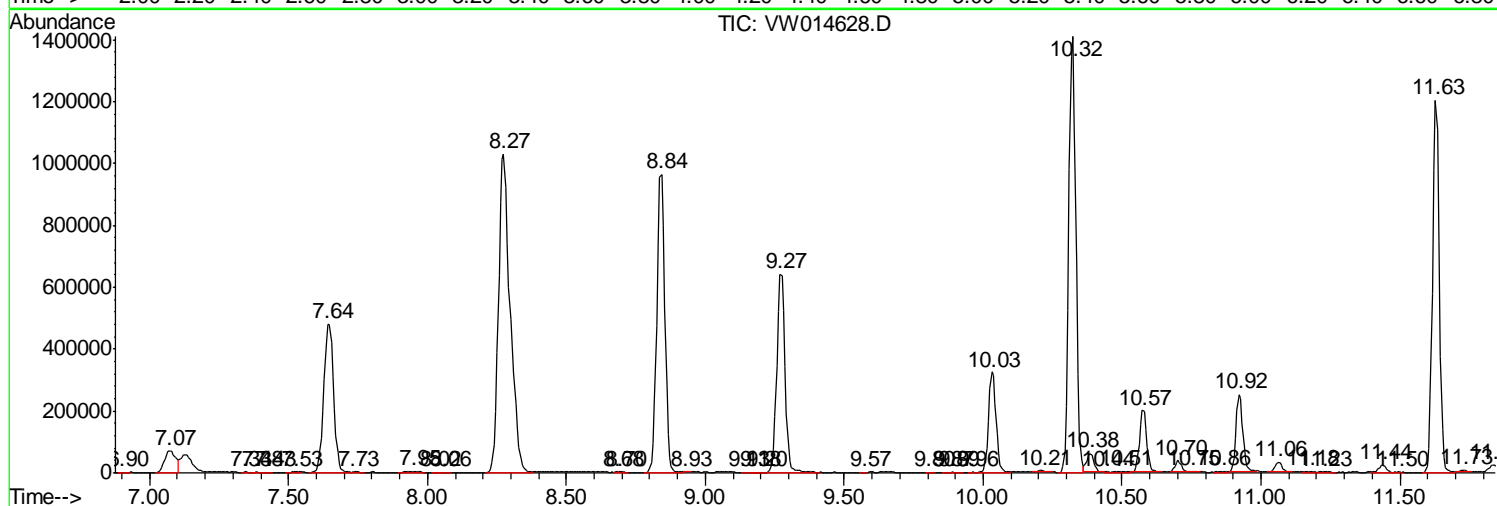
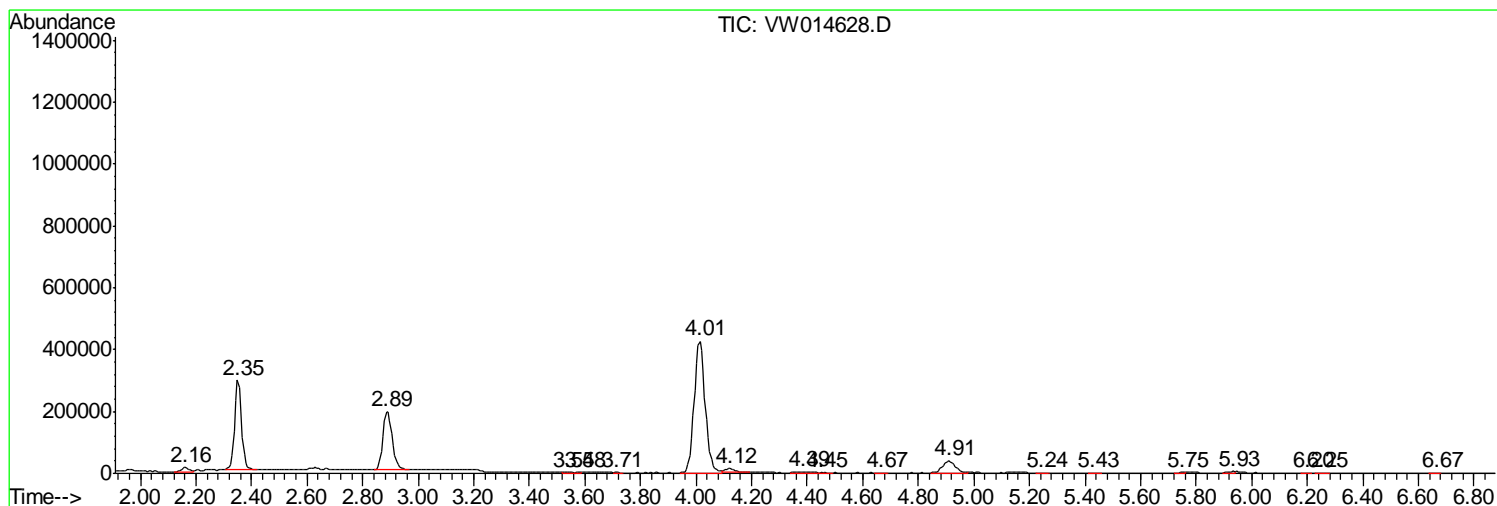
Sum of corrected areas: 20801081

Data Path : Z:\VOASRV\HPCHEM1\MSVOA W\DATA\VW011420\
 Data File : VW014628.D
 Acq On : 14 Jan 2020 13:03
 Operator : SY/VA
 Sample : L1109-02
 Misc : 5.05G/10ML/MSVOA W/SOIL
 ALS Vial : 1 Sample Multiplier: 1

Instrument :
 MSVOA_W
 ClientSampleId :

Quant Method : Z:\VOASRV\HPCHEM1\MSVOA_W\METHOD\SOM2WLM122719S.M
 Quant Title : VOC Analysis

TIC Library : C:\DATABASE\NIST11.L
 TIC Integration Parameters: LSCINT.P



Data Path : Z:\VOASRV\HPCHEM1\MSVOA W\DATA\VW011420\
 Data File : VW014628.D
 Acq On : 14 Jan 2020 13:03
 Operator : SY/VA
 Sample : L1109-02
 Misc : 5.05G/10ML/MSVOA W/SOIL
 ALS Vial : 1 Sample Multiplier: 1

Instrument :
 MSVOA_W
 ClientSampled :

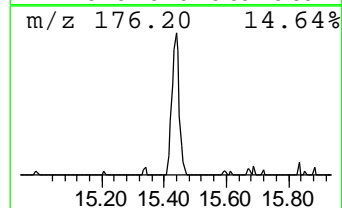
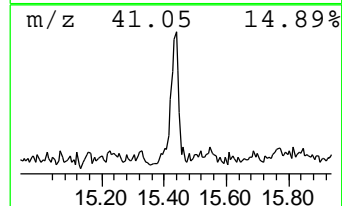
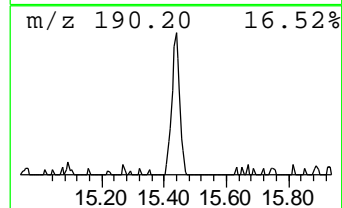
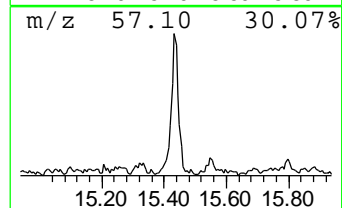
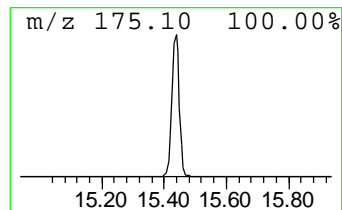
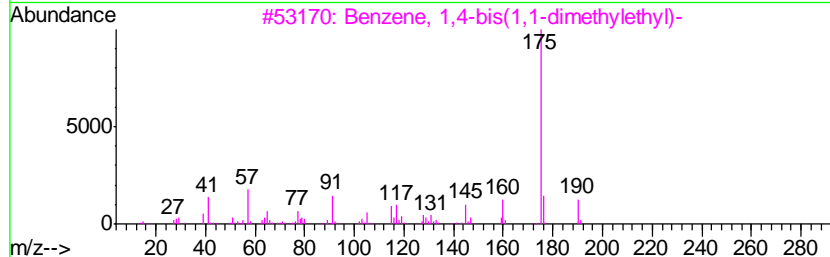
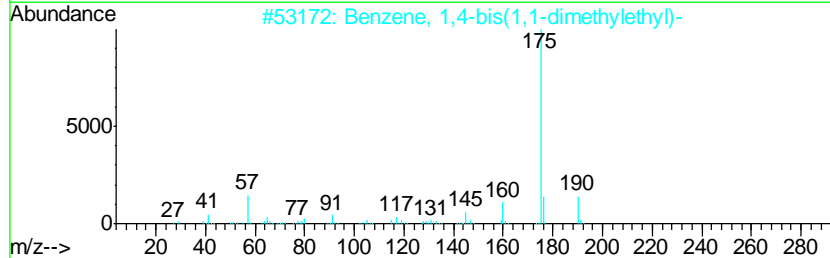
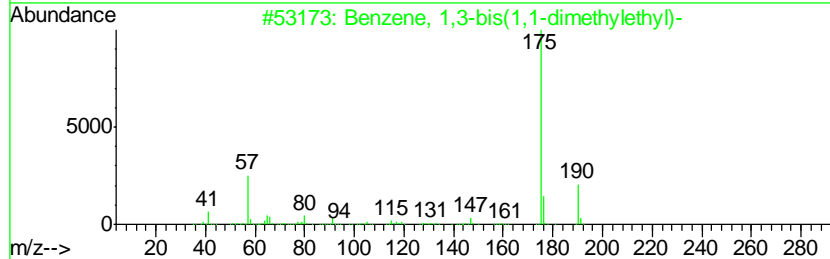
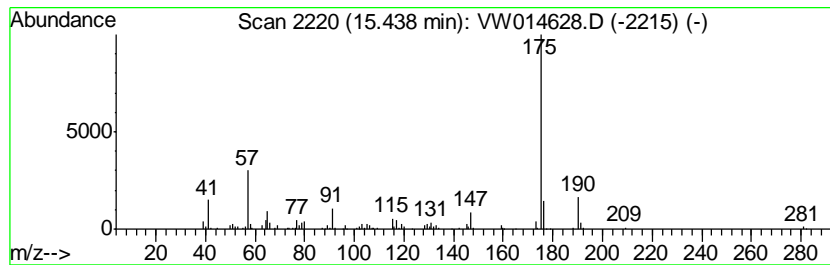
Quant Method : Z:\VOASRV\HPCHEM1\MSVOA_W\METHOD\SOM2WLM122719S.M
 Quant Title : VOC Analysis

TIC Library : C:\DATABASE\NIST11.L
 TIC Integration Parameters: LSCINT.P

 Peak Number 5 Benzene, 1,3-bis(1,1-dimeth... Concentration Rank 4

R.T.	EstConc	Area	Relative to ISTD	R.T.
15.44	1.69 ug/L	94984	1,4-Dichlorobenzene-d4	13.55

Hit#	of	Tentative ID	MW	MolForm	CAS#	Qual
1	5	Benzene, 1,3-bis(1,1-dimethyleth...	190	C14H22	001014-60-4	87
2		Benzene, 1,4-bis(1,1-dimethyleth...	190	C14H22	001012-72-2	83
3		Benzene, 1,4-bis(1,1-dimethyleth...	190	C14H22	001012-72-2	81
4		Benzenepropanal, 4-(1,1-dimethyl...	190	C13H18O	018127-01-0	80
5		Benzene, 1,3-bis(1,1-dimethyleth...	190	C14H22	001014-60-4	80



Data Path : Z:\VOASRV\HPCHEM1\MSVOA W\DATA\VW011420\
 Data File : VW014628.D
 Acq On : 14 Jan 2020 13:03
 Operator : SY/VA
 Sample : L1109-02
 Misc : 5.05G/10ML/MSVOA W/SOIL
 ALS Vial : 1 Sample Multiplier: 1

Instrument :
 MSVOA_W
 ClientSampled :

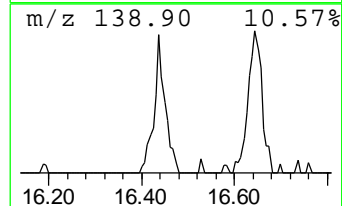
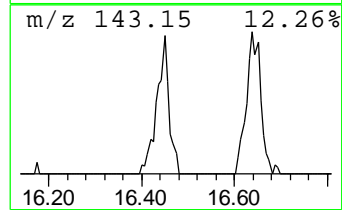
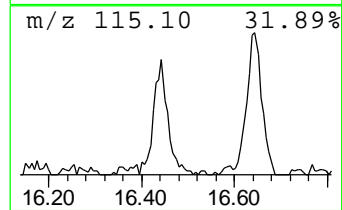
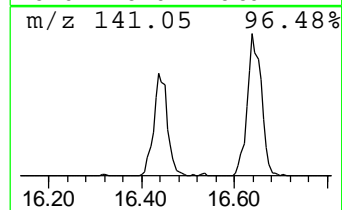
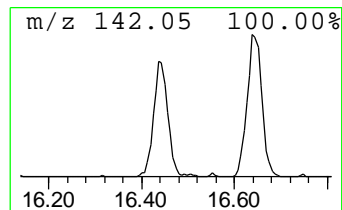
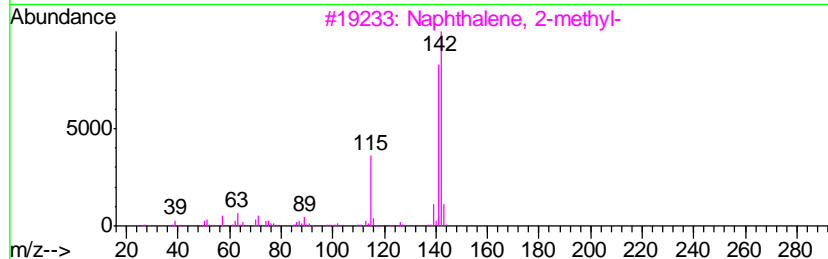
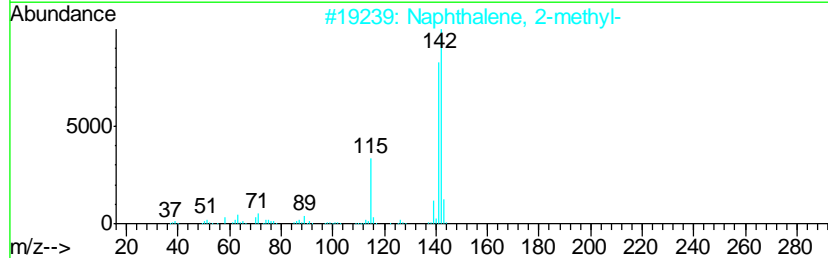
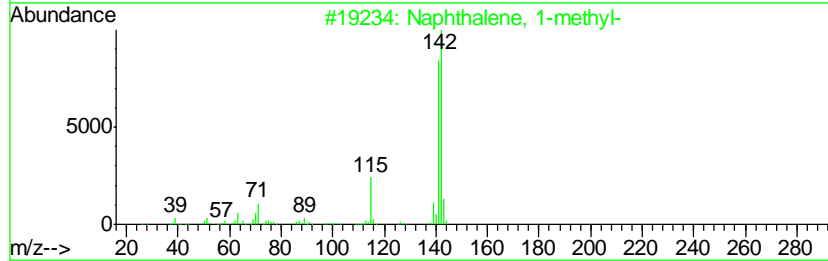
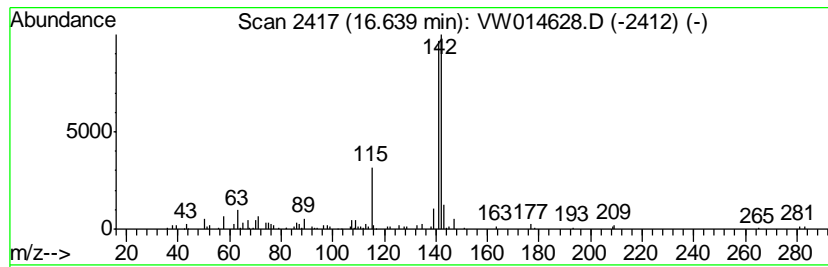
Quant Method : Z:\VOASRV\HPCHEM1\MSVOA_W\METHOD\SOM2WLM122719S.M
 Quant Title : VOC Analysis

TIC Library : C:\DATABASE\NIST11.L
 TIC Integration Parameters: LSCINT.P

 Peak Number 6 Naphthalene, 1-methyl- Concentration Rank 6

R.T.	EstConc	Area	Relative to ISTD	R.T.
16.64	1.25 ug/L	70444	1,4-Dichlorobenzene-d4	13.55

Hit#	of	Tentative ID	MW	MolForm	CAS#	Qual
1	5	Naphthalene, 1-methyl-	142	C11H10	000090-12-0	90
2		Naphthalene, 2-methyl-	142	C11H10	000091-57-6	90
3		Naphthalene, 2-methyl-	142	C11H10	000091-57-6	90
4		1,4-Methanonaphthalene, 1,4-dihy...	142	C11H10	004453-90-1	90
5		Naphthalene, 1-methyl-	142	C11H10	000090-12-0	90



Data Path : Z:\VOASRV\HPCHEM1\MSVOA_W\DATA\VW011420\
Data File : VW014628.D
Acq On : 14 Jan 2020 13:03
Operator : SY/VA
Sample : L1109-02
Misc : 5.05G/10ML/MSVOA_W/SOIL
ALS Vial : 1 Sample Multiplier: 1

Instrument :
MSVOA_W
ClientSampleId :

Quant Method : Z:\VOASRV\HPCHEM1\MSVOA_W\METHOD\SOM2WLM122719S.M
Quant Title : VOC Analysis

TIC Library : C:\DATABASE\NIST11.L
TIC Integration Parameters: LSCINT.P

TIC Top Hit name	RT	EstConc	Units	Response	--Internal Standard--			
					#	RT	Resp	Conc
Benzene, 1,3-bis(...	15.44	1.7	ug/L	94984	3	13.55	1404070	25.0
Naphthalene, 1-me...	16.64	1.3	ug/L	70444	3	13.55	1404070	25.0