

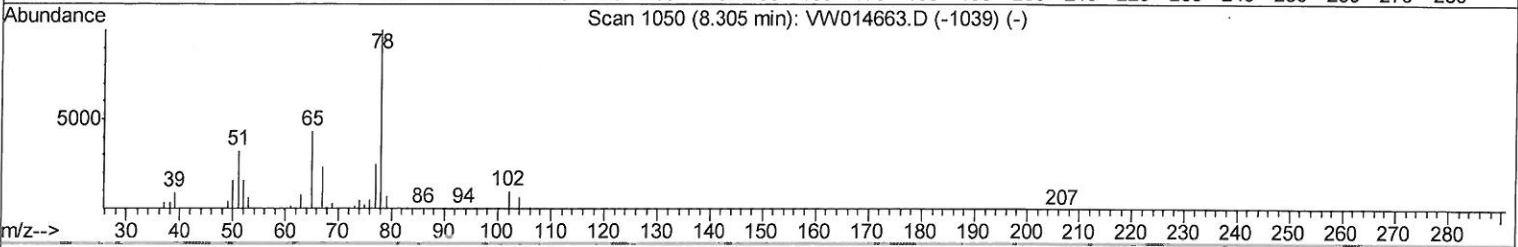
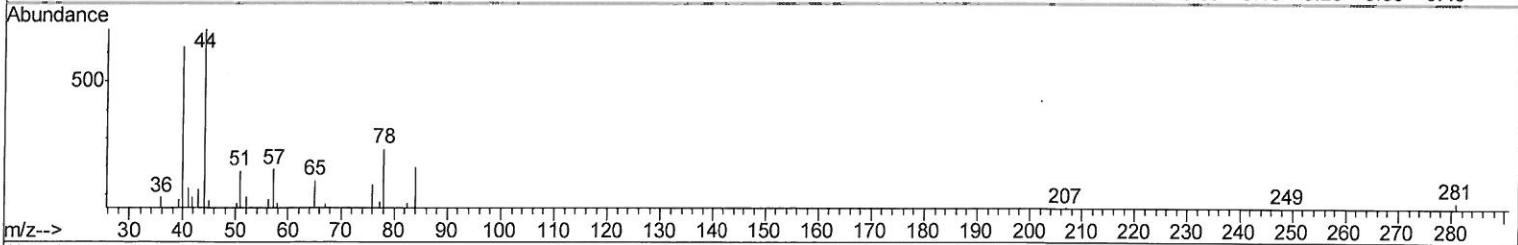
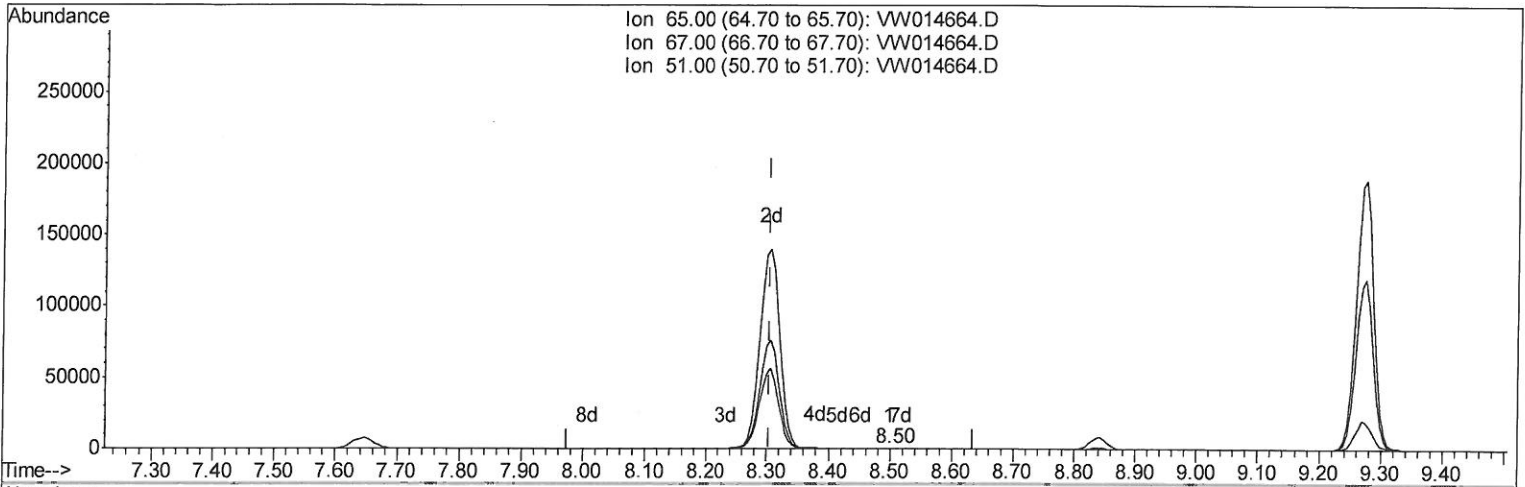
Quantitation Report (Qedit)

Data Path : Z:\VOASRV\HPCHEM1\MSVOA W\DATA\VW011620\
 Data File : VW014664.D
 Acq On : 16 Jan 2020 11:09
 Operator : SY/VA
 Sample : VW0116SBL01
 Misc : 5.00G/10ML/MSVOA W/SOIL
 ALS Vial : 1 Sample Multiplier: 1

Instrument :
 MSVOA_W
Client Sampled :
 VBLK21

Manual Integrations
APPROVED
 MMDadoda
 1/17/2020 1:58:24 PM

Quant Time: Jan 17 01:21:24 2020
 Quant Method : Z:\VOASRV\HPCHEM1\MSVOA_W\METHOD\SOM2WLM122719S.M
 Quant Title : VOC Analysis
 QLast Update : Fri Jan 17 01:19:13 2020
 Response via : Initial Calibration



TIC: VW014664.D

(26) 1,2-Dichloroethane-d4 (S)

8.500min (+0.195) 0.01ug/L

response 145

Ion	Exp%	Act%
65.00	100	100
67.00	54.90	48.97
51.00	114.80	94.48
0.00	0.00	0.00

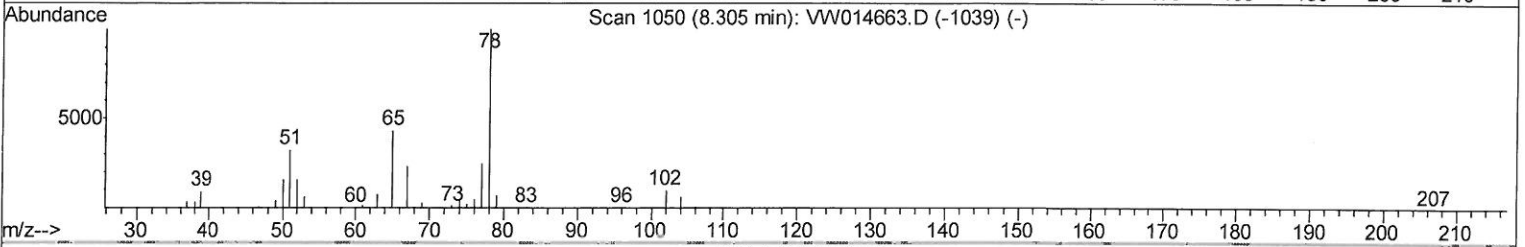
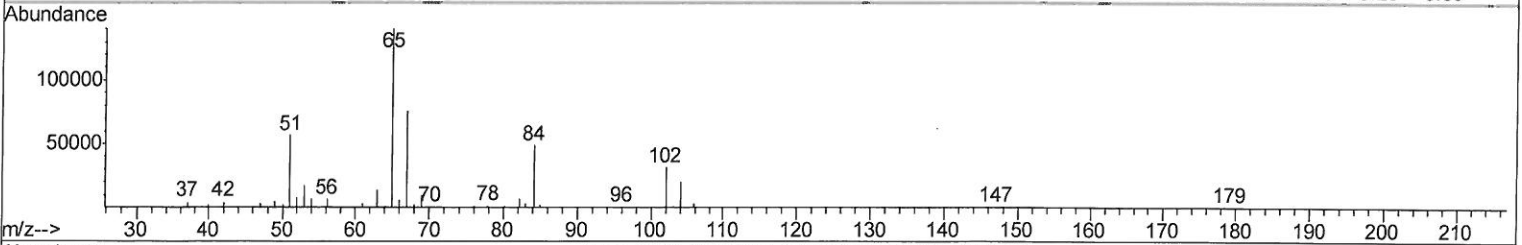
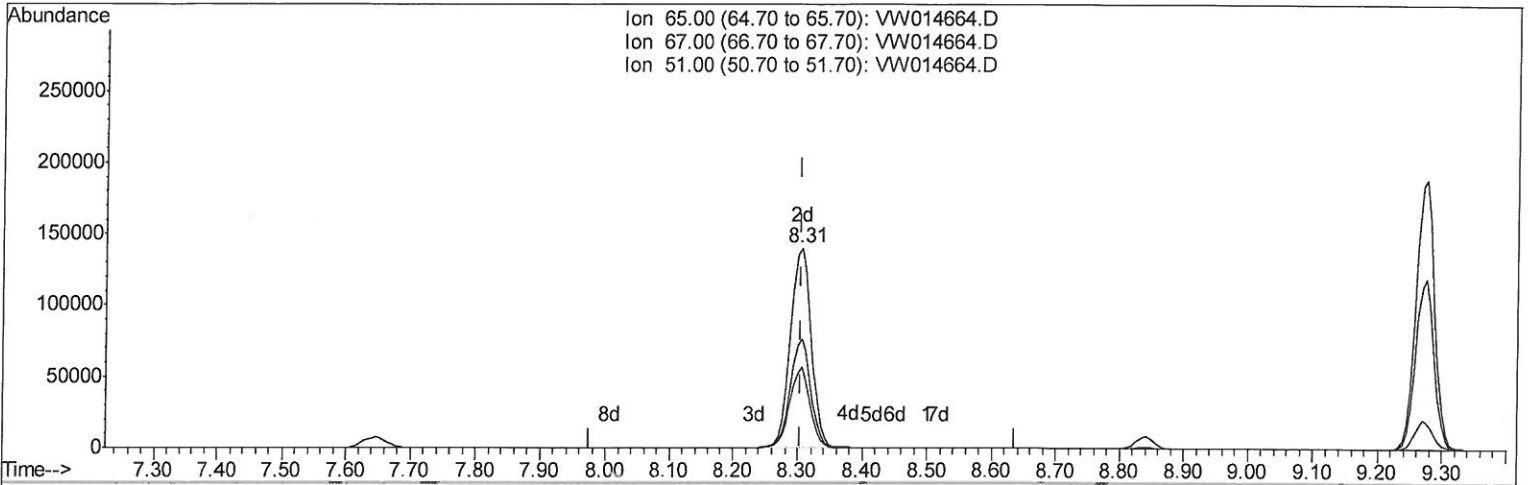
Quantitation Report (Qedit)

Data Path : Z:\VOASRV\HPCHEM1\MSVOA W\DATA\VW011620\
 Data File : VW014664.D
 Acq On : 16 Jan 2020 11:09
 Operator : SY/VA
 Sample : VW0116SBL01
 Misc : 5.00G/10ML/MSVOA W/SOIL
 ALS Vial : 1 Sample Multiplier: 1

Instrument :
 MSVOA_W
 ClientSampled :
 VBLK21

Manual Integrations
APPROVED
 MMDadoda
 1/17/2020 1:58:24 PM

Quant Time: Jan 17 01:21:24 2020
 Quant Method : Z:\VOASRV\HPCHEM1\MSVOA_W\METHOD\SOM2WLM122719S.M
 Quant Title : VOC Analysis
 QLast Update : Fri Jan 17 01:19:13 2020
 Response via : Initial Calibration



TIC: VW014664.D

(26) 1,2-Dichloroethane-d4 (S)

8.305min (0.000) 26.33ug/L m *> 01/17/2020*

response 317056

Ion	Exp%	Act%
65.00	100	100
67.00	54.90	0.02#
51.00	114.80	0.04#
0.00	0.00	0.00

Data Path : Z:\VOASRV\HPCHEM1\MSVOA W\DATA\VW011620\
 Data File : VW014664.D
 Acq On : 16 Jan 2020 11:09
 Operator : SY/VA
 Sample : VW0116SBL01
 Misc : 5.00G/10ML/MSVOA W/SOIL
 ALS Vial : 1 Sample Multiplier: 1

Instrument :
 MSVOA_W
 Client Sampled :
 VBLK21

Manual Integrations
 APPROVED

MMDadoda
 1/17/2020 1:58:24 PM

Quant Time: Jan 17 02:25:29 2020
 Quant Method : Z:\VOASRV\HPCHEM1\MSVOA_W\METHOD\SOM2WLM122719S.M
 Quant Title : VOC Analysis
 QLast Update : Fri Jan 17 01:19:13 2020
 Response via : Initial Calibration

Internal Standards	R.T.	QIon	Response	Conc	Units	Dev(Min)
1) 1,4-Difluorobenzene	8.84	114	1008473	25.00	ug/L	0.00
28) Chlorobenzene-d5	11.63	117	896739	25.00	ug/L	0.00
60) 1,4-Dichlorobenzene-d4	13.56	152	390839	25.00	ug/L	0.00

System Monitoring Compounds

4) Vinyl Chloride-d3	2.35	65	312924	22.01	ug/L	0.00
Spiked Amount	25.000	Range 30 - 150	Recovery =	88.04%		
7) Chloroethane-d5	2.89	69	250476	23.91	ug/L	0.00
Spiked Amount	25.000	Range 30 - 150	Recovery =	95.64%		
10) 1,1-Dichloroethene-d2	4.02	63	462360	17.78	ug/L	0.00
Spiked Amount	25.000	Range 45 - 110	Recovery =	71.12%		
20) 2-Butanone-d5	7.07	46	221100	65.36	ug/L	0.00
Spiked Amount	50.000	Range 20 - 135	Recovery =	130.72%		
24) Chloroform-d	7.65	84	576868	24.86	ug/L	0.00
Spiked Amount	25.000	Range 40 - 150	Recovery =	99.44%		
26) 1,2-Dichloroethane-d4	8.31	65	317056m	26.33	ug/L	0.00
Spiked Amount	25.000	Range 70 - 130	Recovery =	105.32%		
29) Benzene-d6	8.27	84	1244340	26.09	ug/L	0.00
Spiked Amount	25.000	Range 20 - 135	Recovery =	104.36%		
33) 1,2-Dichloropropane-d6	9.27	67	378107	26.37	ug/L	0.00
Spiked Amount	25.000	Range 70 - 120	Recovery =	105.48%		
37) Toluene-d8	10.32	98	1113874	25.77	ug/L	0.00
Spiked Amount	25.000	Range 30 - 130	Recovery =	103.08%		
38) trans-1,3-Dichloropropene-	10.57	79	148033	25.00	ug/L	0.00
Spiked Amount	25.000	Range 30 - 135	Recovery =	100.00%		
39) 2-Hexanone-d5	10.92	63	164827	67.23	ug/L	0.00
Spiked Amount	50.000	Range 20 - 135	Recovery =	134.46%		
48) 1,1,2,2-Tetrachloroethane-	12.69	84	321707	29.88	ug/L	0.00
Spiked Amount	25.000	Range 45 - 120	Recovery =	119.52%		
61) 1,2-Dichlorobenzene-d4	13.85	152	357832	27.79	ug/L	0.00
Spiked Amount	25.000	Range 75 - 120	Recovery =	111.16%		

01/17/2020

Target Compounds	R.T.	QIon	Response	Conc	Units	Ovalue
13) Acetone	4.12	43	16857	3.599	ug/L	97

(#) = qualifier out of range (m) = manual integration (+) = signals summed

Data Path : Z:\VOASRV\HPCHEM1\MSVOA W\DATA\VW011620\
 Data File : VW014664.D
 Acq On : 16 Jan 2020 11:09
 Operator : SY/VA
 Sample : VW0116SBL01
 Misc : 5.00G/10ML/MSVOA W/SOIL
 ALS Vial : 1 Sample Multiplier: 1

Instrument :
 MSVOA_W
Client Sampled :
 VBLK21

Manual Integrations
APPROVED

MMDadoda
 1/17/2020 1:58:24 PM

Quant Time: Jan 17 02:25:29 2020
 Quant Method : Z:\VOASRV\HPCHEM1\MSVOA_W\METHOD\SOM2WLM122719S.M
 Quant Title : VOC Analysis
 QLast Update : Fri Jan 17 01:19:13 2020
 Response via : Initial Calibration

