

Data Path : Z:\voasrv\HPCHEM1\MSVOA_W\Data\VW011622\
 Data File : VW021950.D
 Acq On : 15 Jan 2022 17:27
 Operator : SY/VA
 Sample : N1168-08
 Misc : 5.49g/10mL/MSVOA_W/SOIL
 ALS Vial : 1 Sample Multiplier: 1

Instrument :
 MSVOA_W
ClientSampleId :
 BGLX4

Quant Time: Jan 17 06:41:03 2022
 Quant Method : Z:\voasrv\HPCHEM1\MSVOA_W\Method\SFAMWLM011122SMA.M
 Quant Title : SFAM01.0
 QLast Update : Mon Jan 17 06:38:36 2022
 Response via : Initial Calibration

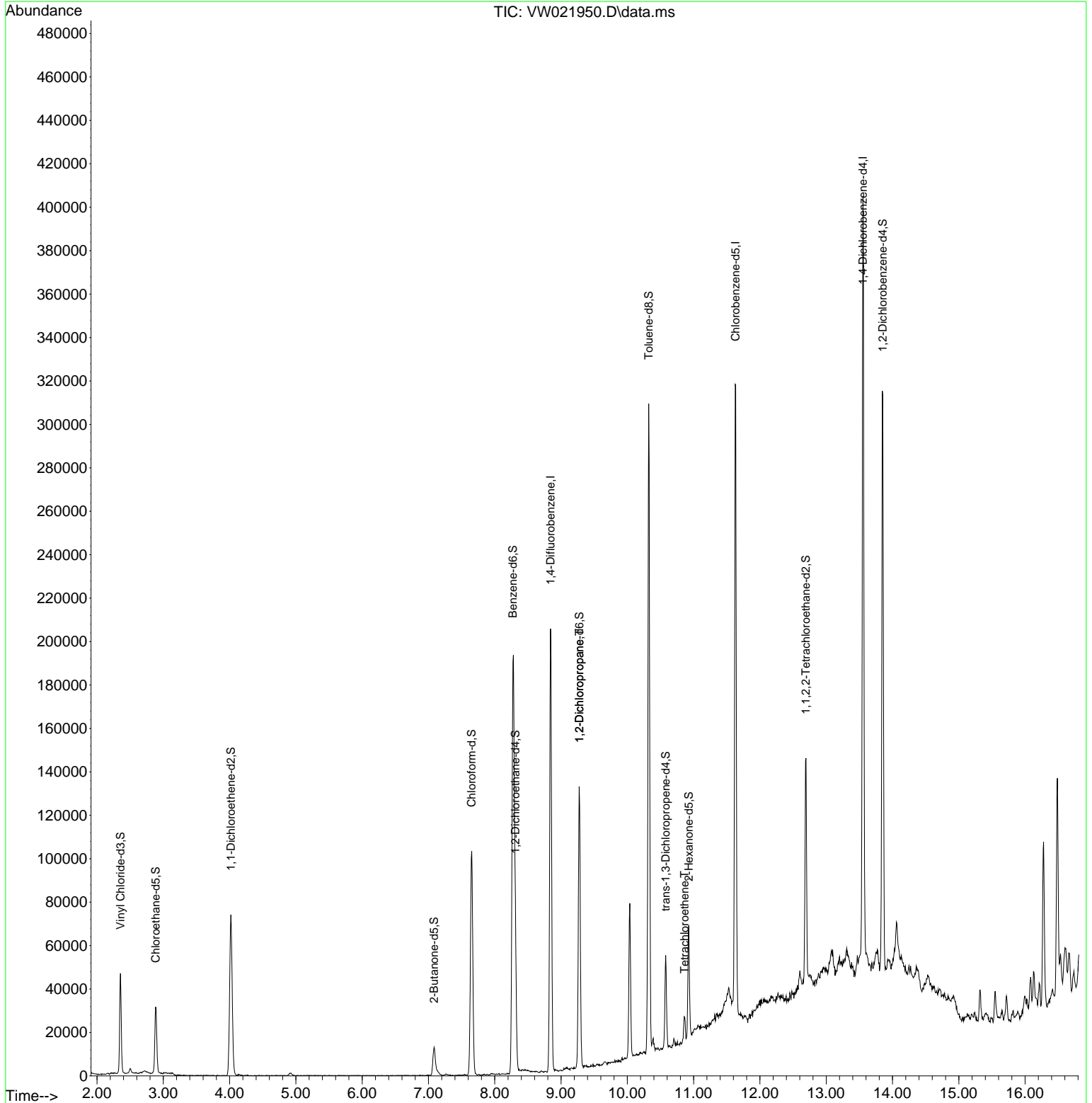
Compound	R.T.	QIon	Response	Conc	Units	Dev(Min)
Internal Standards						
1) 1,4-Difluorobenzene	8.842	114	184703	25.000	ug/L	# 0.00
28) Chlorobenzene-d5	11.634	117	179417	25.000	ug/L	0.00
58) 1,4-Dichlorobenzene-d4	13.554	152	99655	25.000	ug/L	0.00
System Monitoring Compounds						
4) Vinyl Chloride-d3	2.355	65	43646	12.714	ug/L	0.00
Spiked Amount	25.000	Range 30 - 150	Recovery =	50.840%		
7) Chloroethane-d5	2.885	69	32852	10.597	ug/L	0.00
Spiked Amount	25.000	Range 30 - 150	Recovery =	42.400%		
11) 1,1-Dichloroethene-d2	4.019	63	65749	12.131	ug/L	0.00
Spiked Amount	25.000	Range 45 - 110	Recovery =	48.520%		
21) 2-Butanone-d5	7.086	46	21344	44.049	ug/L	0.00
Spiked Amount	50.000	Range 20 - 135	Recovery =	88.100%		
24) Chloroform-d	7.653	84	105497	17.680	ug/L	0.00
Spiked Amount	25.000	Range 40 - 150	Recovery =	70.720%		
26) 1,2-Dichloroethane-d4	8.311	65	55086	19.117	ug/L	0.00
Spiked Amount	25.000	Range 70 - 130	Recovery =	76.480%		
32) Benzene-d6	8.275	84	210448	18.077	ug/L	0.00
Spiked Amount	25.000	Range 20 - 135	Recovery =	72.320%		
36) 1,2-Dichloropropane-d6	9.274	67	57679	18.797	ug/L	0.00
Spiked Amount	25.000	Range 70 - 120	Recovery =	75.200%		
41) Toluene-d8	10.323	98	203508	17.341	ug/L	0.00
Spiked Amount	25.000	Range 30 - 130	Recovery =	69.360%		
43) trans-1,3-Dichloroprop...	10.579	79	23125	17.750	ug/L	0.00
Spiked Amount	25.000	Range 30 - 135	Recovery =	71.000%		
47) 2-Hexanone-d5	10.927	63	19139	45.966	ug/L	0.00
Spiked Amount	50.000	Range 20 - 135	Recovery =	91.940%		
56) 1,1,2,2-Tetrachloroeth...	12.694	84	47841	19.938	ug/L	0.00
Spiked Amount	25.000	Range 45 - 120	Recovery =	79.760%		
66) 1,2-Dichlorobenzene-d4	13.853	152	80269	19.589	ug/L	0.00
Spiked Amount	25.000	Range 75 - 120	Recovery =	78.360%		
Target Compounds						
37) 1,2-Dichloropropane	9.274	63	6759	2.820	ug/L	# 90
46) Tetrachloroethene	10.866	164	2868	0.909	ug/L	96

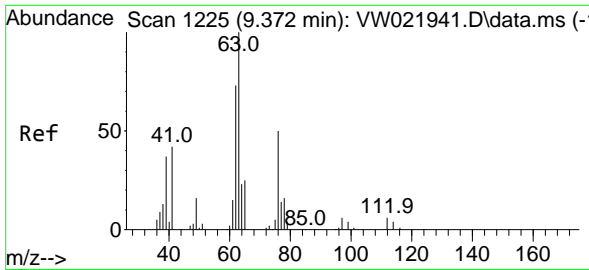
(#) = qualifier out of range (m) = manual integration (+) = signals summed

Data Path : Z:\voasrv\HPCHEM1\MSVOA_W\Data\VW011622\
 Data File : VW021950.D
 Acq On : 15 Jan 2022 17:27
 Operator : SY/VA
 Sample : N1168-08
 Misc : 5.49g/10mL/MSVOA_W/SOIL
 ALS Vial : 1 Sample Multiplier: 1

Instrument :
 MSVOA_W
 ClientSampleId :
 BGLX4

Quant Time: Jan 17 06:41:03 2022
 Quant Method : Z:\voasrv\HPCHEM1\MSVOA_W\Method\SFAMWLM011122SMA.M
 Quant Title : SFAM01.0
 QLast Update : Mon Jan 17 06:38:36 2022
 Response via : Initial Calibration

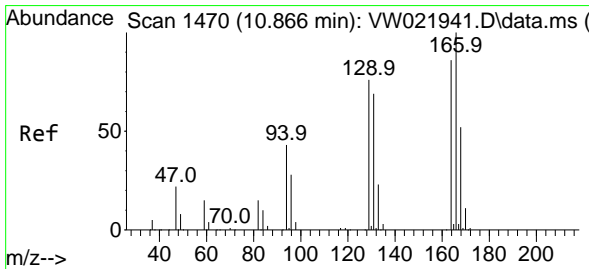
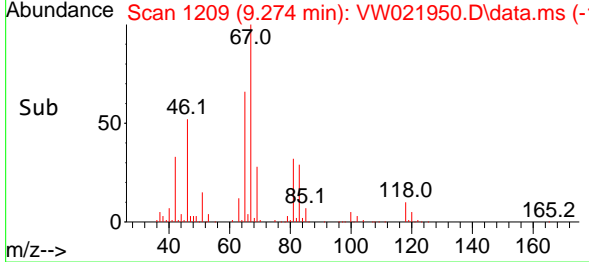
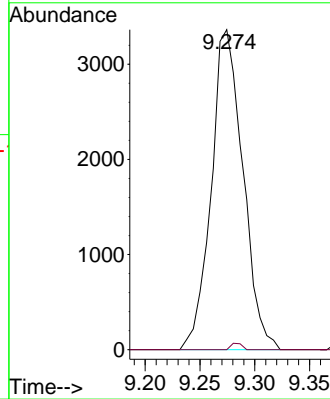
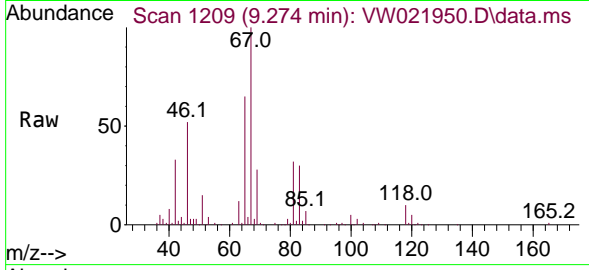




#37
 1,2-Dichloropropane
 Concen: 2.820 ug/L
 RT: 9.274 min Scan# 1111
 Delta R.T. -0.098 min
 Lab File: VW021950.D
 Acq: 15 Jan 2022 17:27

Instrument : MSVOA_W
 ClientSampleId : BGLX4

Tgt Ion: 63 Resp: 6759
 Ion Ratio Lower Upper
 63 100
 112 0.7 3.2 4.8#



#46
 Tetrachloroethene
 Concen: 0.909 ug/L
 RT: 10.866 min Scan# 1470
 Delta R.T. 0.000 min
 Lab File: VW021950.D
 Acq: 15 Jan 2022 17:27

Tgt Ion:164 Resp: 2868
 Ion Ratio Lower Upper
 164 100
 129 87.1 65.5 121.7
 131 83.3 59.7 110.9
 166 130.8 88.7 164.7

