

Data Path : Z:\voasrv\HPCHEM1\MSVOA\_W\Data\VW011622\  
 Data File : VW021949.D  
 Acq On : 15 Jan 2022 17:04  
 Operator : SY/VA  
 Sample : N1168-07  
 Misc : 5.73g/10mL/MSVOA\_W/SOIL  
 ALS Vial : 1 Sample Multiplier: 1

**Instrument :**  
 MSVOA\_W  
**ClientSampleId :**  
 BGLX3

Quant Time: Jan 17 06:40:53 2022  
 Quant Method : Z:\voasrv\HPCHEM1\MSVOA\_W\Method\SFAMWLM011122SMA.M  
 Quant Title : SFAM01.0  
 QLast Update : Mon Jan 17 06:38:36 2022  
 Response via : Initial Calibration

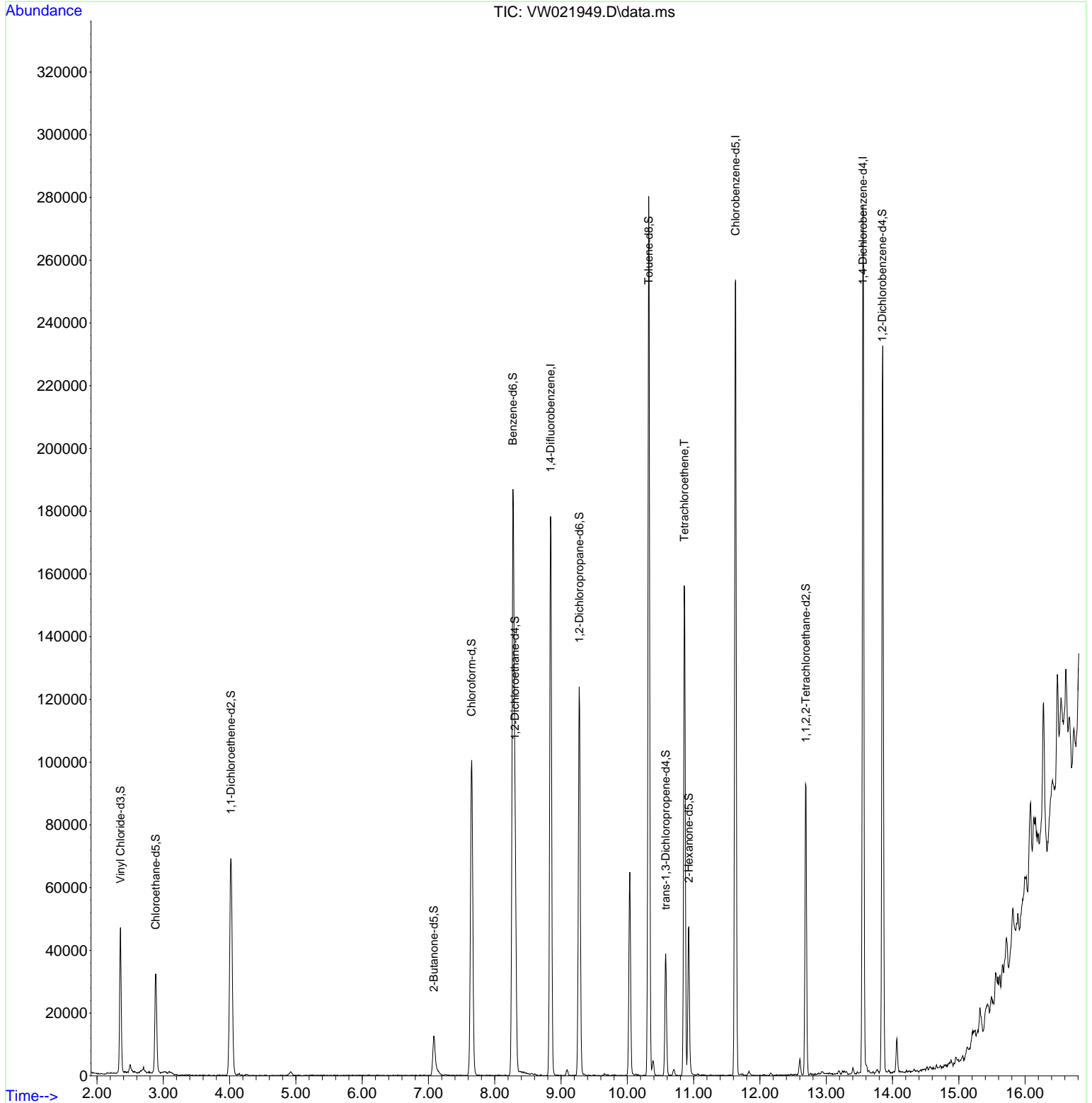
Compound	R.T.	QIon	Response	Conc	Units	Dev(Min)
-----						
Internal Standards						
1) 1,4-Difluorobenzene	8.842	114	163574	25.000	ug/L	# 0.00
28) Chlorobenzene-d5	11.634	117	156807	25.000	ug/L	# 0.00
58) 1,4-Dichlorobenzene-d4	13.554	152	78693	25.000	ug/L	0.00
System Monitoring Compounds						
4) Vinyl Chloride-d3	2.355	65	42860	14.097	ug/L	0.00
Spiked Amount	25.000	Range 30 - 150	Recovery =	56.400%		
7) Chloroethane-d5	2.885	69	32684	11.905	ug/L	0.00
Spiked Amount	25.000	Range 30 - 150	Recovery =	47.600%		
11) 1,1-Dichloroethene-d2	4.019	63	63226	13.172	ug/L	0.00
Spiked Amount	25.000	Range 45 - 110	Recovery =	52.680%		
21) 2-Butanone-d5	7.080	46	19859	46.278	ug/L	0.00
Spiked Amount	50.000	Range 20 - 135	Recovery =	92.560%		
24) Chloroform-d	7.653	84	103600	19.605	ug/L	0.00
Spiked Amount	25.000	Range 40 - 150	Recovery =	78.400%		
26) 1,2-Dichloroethane-d4	8.305	65	52273	20.484	ug/L	0.00
Spiked Amount	25.000	Range 70 - 130	Recovery =	81.920%		
32) Benzene-d6	8.275	84	200302	19.686	ug/L	0.00
Spiked Amount	25.000	Range 20 - 135	Recovery =	78.760%		
36) 1,2-Dichloropropane-d6	9.274	67	55508	20.698	ug/L	0.00
Spiked Amount	25.000	Range 70 - 120	Recovery =	82.800%		
41) Toluene-d8	10.323	98	188538	18.382	ug/L	0.00
Spiked Amount	25.000	Range 30 - 130	Recovery =	73.520%		
43) trans-1,3-Dichloroprop...	10.579	79	21552	18.928	ug/L	0.00
Spiked Amount	25.000	Range 30 - 135	Recovery =	75.720%		
47) 2-Hexanone-d5	10.927	63	16940	46.551	ug/L	0.00
Spiked Amount	50.000	Range 20 - 135	Recovery =	93.100%		
56) 1,1,2,2-Tetrachloroeth...	12.694	84	43447	20.718	ug/L	0.00
Spiked Amount	25.000	Range 45 - 120	Recovery =	82.880%		
66) 1,2-Dichlorobenzene-d4	13.847	152	66188	20.455	ug/L	0.00
Spiked Amount	25.000	Range 75 - 120	Recovery =	81.840%		
-----						
Target Compounds						Qvalue
46) Tetrachloroethene	10.859	164	36460	13.217	ug/L	97
-----						

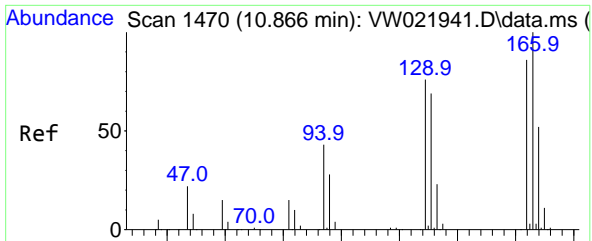
(#) = qualifier out of range (m) = manual integration (+) = signals summed

Data Path : Z:\voasrv\HPCHEM1\MSVOA\_W\Data\VW011622\  
 Data File : VW021949.D  
 Acq On : 15 Jan 2022 17:04  
 Operator : SY/VA  
 Sample : N1168-07  
 Misc : 5.73g/10mL/MSVOA\_W/SOIL  
 ALS Vial : 1 Sample Multiplier: 1

**Instrument :**  
 MSVOA\_W  
**ClientSampleId :**  
 BGLX3

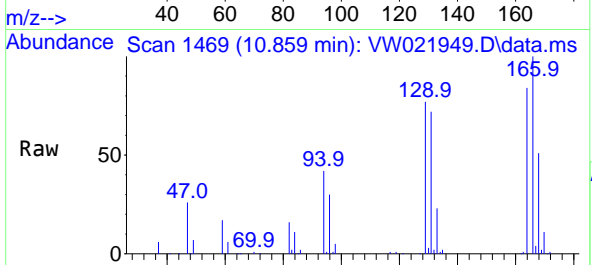
Quant Time: Jan 17 06:40:53 2022  
 Quant Method : Z:\voasrv\HPCHEM1\MSVOA\_W\Method\SFAMWLM011122SMA.M  
 Quant Title : SFAM01.0  
 QLast Update : Mon Jan 17 06:38:36 2022  
 Response via : Initial Calibration





#46  
 Tetrachloroethene  
 Concen: 13.217 ug/L  
 RT: 10.859 min Scan# 14  
 Delta R.T. -0.006 min  
 Lab File: VW021949.D  
 Acq: 15 Jan 2022 17:04

Instrument : MSVOA\_W  
 ClientSampleId : BGLX3



Tgt Ion:164 Resp: 36460

Ion	Ratio	Lower	Upper
164	100		
129	92.0	65.5	121.7
131	86.0	59.7	110.9
166	119.1	88.7	164.7

