

Data Path : Z:\voasrv\HPCHEM1\MSVOA\_W\Data\VW012925\  
 Data File : VW031650.D  
 Acq On : 29 Jan 2025 18:46  
 Operator : SY/MD  
 Sample : Q1189-16  
 Misc : 11.32g/10mL/MSVOA\_W/SOIL/A  
 ALS Vial : 1 Sample Multiplier: 1

Instrument :  
 MSVOA\_W  
 ClientSampleId :  
 A44R7

Integration Parameters: LSCINT.P

Integrator: RTE  
 Smoothing : OFF  
 Sampling : 1  
 Start Thrs: 0.2  
 Stop Thrs : 0

Filtering: 5  
 Min Area: 0 % of largest Peak  
 Max Peaks: 100  
 Peak Location: TOP

If leading or trailing edge < 100 prefer < Baseline drop else tangent >  
 Peak separation: 5

Method : Z:\voasrv\HPCHEM1\MSVOA\_W\Method\SFAMWLM011025SMA.M  
 Title : SFAM01.0

Signal : TIC: VW031650.D\data.ms

peak #	R.T. min	first scan	max scan	last scan	PK TY	peak height	corr. area	corr. % max.	% of total
1	1.960	8	12	16	rVB	14563	18720	0.63%	0.065%
2	2.174	39	47	49	rBV3	5806	13171	0.44%	0.046%
3	2.204	49	52	53	rBV2	2212	2313	0.08%	0.008%
4	2.363	66	78	96	rBV2	99793	370279	12.40%	1.287%
5	2.503	97	101	107	rVB3	9706	20847	0.70%	0.072%
6	2.893	157	165	182	rBV	98214	302314	10.13%	1.051%
7	3.301	230	232	237	rVB3	2202	2284	0.08%	0.008%
8	3.381	238	245	255	rVB2	15411	36087	1.21%	0.125%
9	3.734	300	303	306	rVB5	990	1406	0.05%	0.005%
10	4.015	337	349	363	rBV2	244228	926410	31.04%	3.221%
11	4.143	364	370	390	rVB	63490	218658	7.33%	0.760%
12	4.679	450	458	473	rBV3	8599	28430	0.95%	0.099%
13	4.996	507	510	518	rVB4	2299	5009	0.17%	0.017%
14	5.112	524	529	531	rBV5	1167	2026	0.07%	0.007%
15	5.423	573	580	592	rVB4	5518	15686	0.53%	0.055%
16	5.783	629	639	646	rBV3	6217	20720	0.69%	0.072%
17	5.935	652	664	675	rVB6	7634	25382	0.85%	0.088%
18	6.106	689	692	694	rBV3	1604	2199	0.07%	0.008%
19	6.423	737	744	745	rVB2	748	1391	0.05%	0.005%
20	6.898	814	822	833	rBV2	24792	73418	2.46%	0.255%
21	7.081	843	852	861	rBV	100476	305972	10.25%	1.064%
22	7.539	921	927	928	rBV3	1395	2153	0.07%	0.007%
23	7.642	933	944	959	rBV	495271	1209259	40.51%	4.204%
24	8.270	1034	1047	1066	rBV2	1001002	2984970	100.00%	10.378%
25	8.551	1082	1093	1105	rBV2	14784	41500	1.39%	0.144%
26	8.703	1110	1118	1128	rBV2	16525	42577	1.43%	0.148%
27	8.837	1131	1140	1153	rBV	1129259	2250291	75.39%	7.824%
28	9.044	1167	1174	1175	rBV4	2420	3234	0.11%	0.011%
29	9.063	1175	1177	1187	rVB7	2581	5845	0.20%	0.020%
30	9.142	1187	1190	1197	rVB6	1130	2122	0.07%	0.007%
31	9.270	1201	1211	1221	rBV	689509	1405107	47.07%	4.885%
32	9.404	1226	1233	1253	rVB	146435	288559	9.67%	1.003%
33	9.660	1269	1275	1282	rVV7	3333	8853	0.30%	0.031%
34	9.959	1318	1324	1326	rBV5	926	1820	0.06%	0.006%
35	10.032	1326	1336	1345	rVV	366374	671199	22.49%	2.334%
36	10.130	1348	1352	1359	rVB5	2554	4711	0.16%	0.016%

Data Path : Z:\voasrv\HPCHEM1\MSVOA\_W\Data\VW012925\  
 Data File : VW031650.D  
 Acq On : 29 Jan 2025 18:46  
 Operator : SY/MD  
 Sample : Q1189-16  
 Misc : 11.32g/10mL/MSVOA\_W/SOIL/A  
 ALS Vial : 1 Sample Multiplier: 1

Instrument :  
 MSVOA\_W  
 ClientSampleId :  
 A44R7

Integration Parameters: LSCINT.P

Integrator: RTE  
 Smoothing : OFF  
 Sampling : 1  
 Start Thrs: 0.2  
 Stop Thrs : 0

Filtering: 5  
 Min Area: 0 % of largest Peak  
 Max Peaks: 100  
 Peak Location: TOP

If leading or trailing edge < 100 prefer < Baseline drop else tangent >  
 Peak separation: 5

Method : Z:\voasrv\HPCHEM1\MSVOA\_W\Method\SFAMWLM011025SMA.M  
 Title : SFAM01.0

37	10.209	1362	1365	1369	rVB6	1312	1832	0.06%	0.006%
38	10.318	1373	1383	1390	rBV	1366900	2394743	80.23%	8.326%
39	10.386	1390	1394	1399	rVB	49135	85218	2.85%	0.296%
40	10.501	1406	1413	1418	rBV2	4421	8062	0.27%	0.028%
41	10.575	1418	1425	1431	rBV	230475	393719	13.19%	1.369%
42	10.623	1431	1433	1439	rVV6	7297	14124	0.47%	0.049%
43	10.696	1439	1445	1451	rVV2	42963	82613	2.77%	0.287%
44	10.751	1451	1454	1460	rVB5	2014	2851	0.10%	0.010%
45	10.861	1467	1472	1475	rBV5	2203	3692	0.12%	0.013%
46	10.922	1475	1482	1494	rBV	384328	673618	22.57%	2.342%
47	11.062	1498	1505	1523	rBV	1063260	1786279	59.84%	6.210%
48	11.465	1567	1571	1574	rBV5	1194	1842	0.06%	0.006%
49	11.562	1581	1587	1590	rBV2	6361	10622	0.36%	0.037%
50	11.623	1590	1597	1607	rVV	1412886	2416669	80.96%	8.402%
51	11.727	1607	1614	1620	rVV6	11005	25816	0.86%	0.090%
52	11.849	1625	1634	1643	rBV4	13319	32728	1.10%	0.114%
53	11.946	1643	1650	1657	rBV5	11227	22960	0.77%	0.080%
54	12.019	1657	1662	1668	rVB2	6179	11649	0.39%	0.041%
55	12.099	1670	1675	1678	rBV6	2131	3618	0.12%	0.013%
56	12.154	1680	1684	1685	rBV3	1834	2380	0.08%	0.008%
57	12.233	1693	1697	1701	rBV2	3177	5041	0.17%	0.018%
58	12.336	1707	1714	1726	rBV	74984	141046	4.73%	0.490%
59	12.464	1728	1735	1746	rVV	381056	645306	21.62%	2.244%
60	12.599	1749	1757	1764	rBV	366413	602957	20.20%	2.096%
61	12.690	1764	1772	1787	rVB	546089	1107949	37.12%	3.852%
62	12.891	1796	1805	1808	rBV4	10792	22616	0.76%	0.079%
63	12.946	1808	1814	1821	rVB2	29011	62521	2.09%	0.217%
64	13.038	1822	1829	1834	rBV4	12664	28622	0.96%	0.100%
65	13.098	1834	1839	1843	rBV3	13640	26149	0.88%	0.091%
66	13.147	1844	1847	1852	rVB6	4683	7240	0.24%	0.025%
67	13.208	1852	1857	1861	rBV	21515	36666	1.23%	0.127%
68	13.391	1877	1887	1893	rBV6	78383	225775	7.56%	0.785%
69	13.464	1893	1899	1900	rVV	495335	703044	23.55%	2.444%
70	13.489	1900	1903	1908	rVV	1037807	1575603	52.78%	5.478%
71	13.550	1908	1913	1919	rVV	1068169	1707495	57.20%	5.936%
72	13.611	1919	1923	1935	rVV2	106795	207439	6.95%	0.721%
73	13.708	1935	1939	1946	rVB2	13882	24545	0.82%	0.085%
74	13.848	1954	1962	1976	rVB	749418	1261902	42.28%	4.387%
75	13.989	1980	1985	1991	rBV2	35801	67979	2.28%	0.236%
76	14.062	1991	1997	2006	rVV2	206121	360868	12.09%	1.255%

Data Path : Z:\voasrv\HPCHEM1\MSVOA\_W\Data\VW012925\  
 Data File : VW031650.D  
 Acq On : 29 Jan 2025 18:46  
 Operator : SY/MD  
 Sample : Q1189-16  
 Misc : 11.32g/10mL/MSVOA\_W/SOIL/A  
 ALS Vial : 1 Sample Multiplier: 1

Instrument :  
 MSVOA\_W  
 ClientSampleId :  
 A44R7

Integration Parameters: LSCINT.P

Integrator: RTE  
 Smoothing : OFF  
 Sampling : 1  
 Start Thrs: 0.2  
 Stop Thrs : 0

Filtering: 5  
 Min Area: 0 % of largest Peak  
 Max Peaks: 100  
 Peak Location: TOP

If leading or trailing edge < 100 prefer < Baseline drop else tangent >  
 Peak separation: 5

Method : Z:\voasrv\HPCHEM1\MSVOA\_W\Method\SFAMWLM011025SMA.M  
 Title : SFAM01.0

77	14.147	2006	2011	2019	rVB2	26288	42097	1.41%	0.146%
78	14.214	2019	2022	2029	rVB8	2363	4701	0.16%	0.016%
79	14.318	2033	2039	2049	rBV	62664	117418	3.93%	0.408%
80	14.428	2054	2057	2061	rVB5	1036	1451	0.05%	0.005%
81	14.519	2068	2072	2080	rVB7	6678	12863	0.43%	0.045%
82	14.616	2084	2088	2091	rVV4	3272	3776	0.13%	0.013%
83	14.684	2093	2099	2105	rVV	55322	101173	3.39%	0.352%
84	14.745	2105	2109	2124	rVB5	26137	57131	1.91%	0.199%
85	14.879	2126	2131	2133	rBV5	2391	4082	0.14%	0.014%
86	14.952	2138	2143	2149	rVB5	10755	18379	0.62%	0.064%
87	15.092	2160	2166	2173	rBV3	30730	63382	2.12%	0.220%
88	15.244	2186	2191	2196	rVV	44144	69160	2.32%	0.240%
89	15.293	2196	2199	2207	rVB2	14840	23552	0.79%	0.082%
90	15.360	2207	2210	2212	rBV4	1992	3221	0.11%	0.011%
91	15.397	2212	2216	2222	rVB9	4860	9140	0.31%	0.032%
92	15.476	2223	2229	2235	rBV	38252	64741	2.17%	0.225%
93	15.750	2270	2274	2276	rBV4	1640	2818	0.09%	0.010%
94	15.787	2276	2280	2283	rVB5	2759	4050	0.14%	0.014%
95	15.848	2284	2290	2296	rBV8	8747	21880	0.73%	0.076%
96	15.958	2302	2308	2313	rBV6	6501	13592	0.46%	0.047%
97	16.086	2325	2329	2333	rBV7	2563	4444	0.15%	0.015%
98	16.281	2358	2361	2362	rBV3	1463	1916	0.06%	0.007%
99	16.391	2376	2379	2380	rBV3	2577	2414	0.08%	0.008%
100	16.689	2425	2428	2434	rVB8	2369	4628	0.16%	0.016%

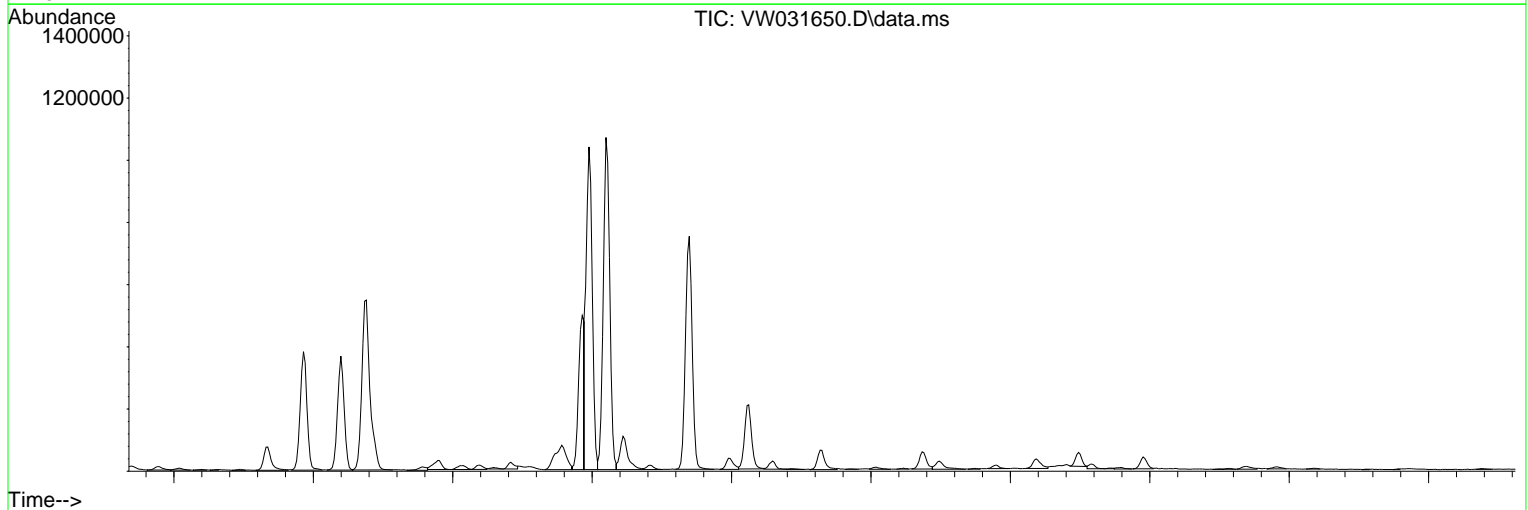
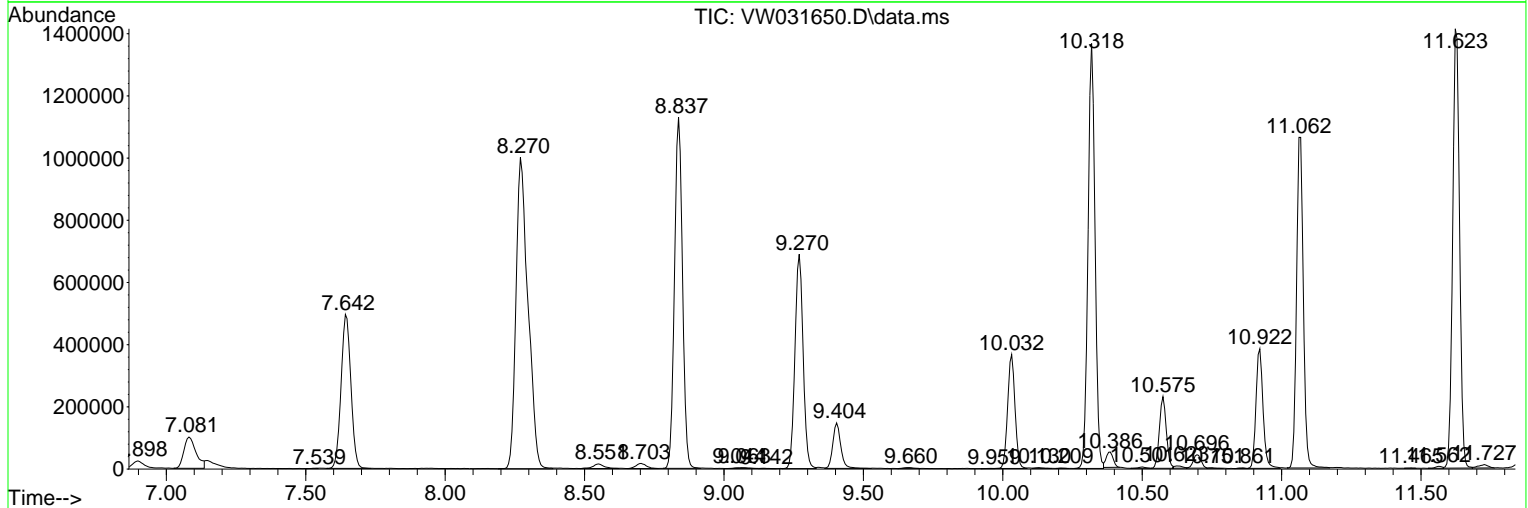
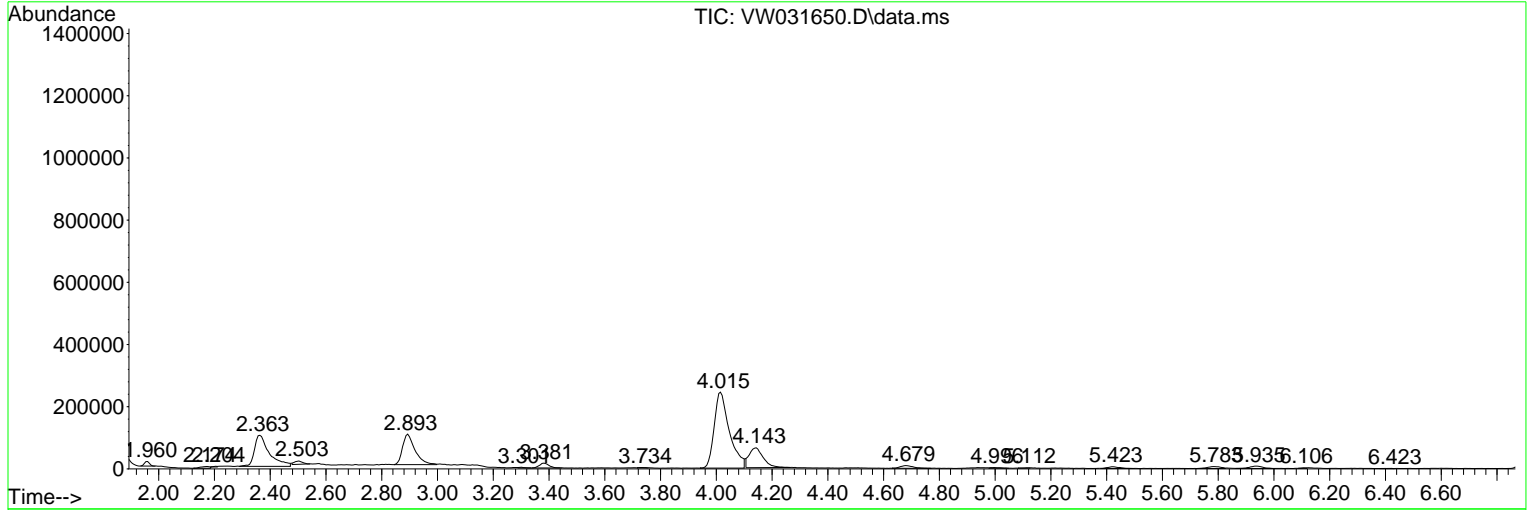
Sum of corrected areas: 28762729

Data Path : Z:\voasrv\HPCHEM1\MSVOA\_W\Data\VW012925\  
 Data File : VW031650.D  
 Acq On : 29 Jan 2025 18:46  
 Operator : SY/MD  
 Sample : Q1189-16  
 Misc : 11.32g/10mL/MSVOA\_W/SOIL/A  
 ALS Vial : 1 Sample Multiplier: 1

Instrument :  
 MSVOA\_W  
 ClientSampleId :  
 A44R7

Quant Method : Z:\voasrv\HPCHEM1\MSVOA\_W\Method\SFAMWLM011025SMA.M  
 Quant Title : SFAM01.0

TIC Library : C:\Database\NIST20.L  
 TIC Integration Parameters: LSCINT.P



Data Path : Z:\voasrv\HPCHEM1\MSVOA\_W\Data\VW012925\  
 Data File : VW031650.D  
 Acq On : 29 Jan 2025 18:46  
 Operator : SY/MD  
 Sample : Q1189-16  
 Misc : 11.32g/10mL/MSVOA\_W/SOIL/A  
 ALS Vial : 1 Sample Multiplier: 1

Instrument :  
 MSVOA\_W  
 ClientSampleId :  
 A44R7

Quant Method : Z:\voasrv\HPCHEM1\MSVOA\_W\Method\SFAMWLM011025SMA.M  
 Quant Title : SFAM01.0

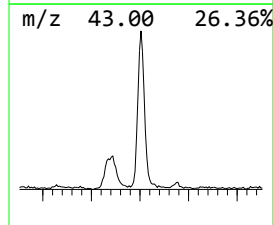
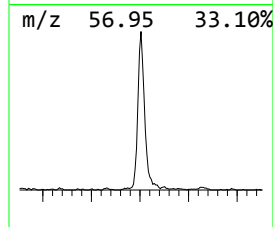
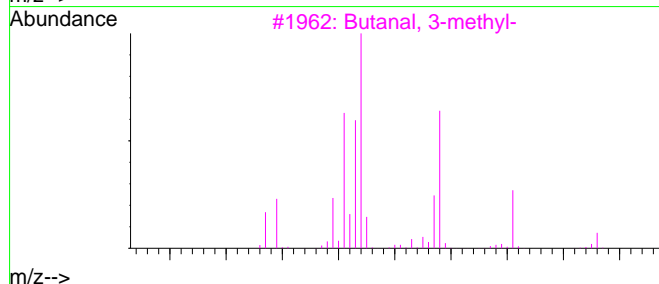
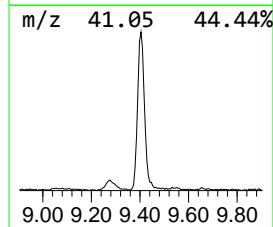
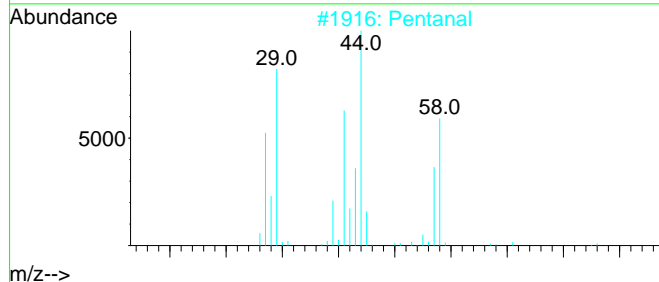
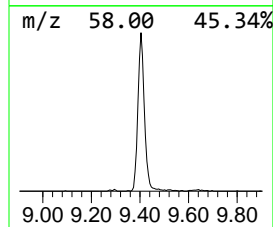
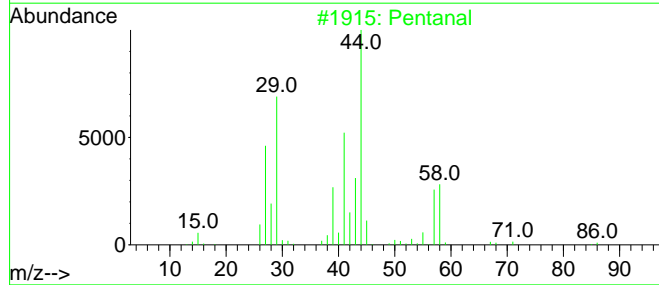
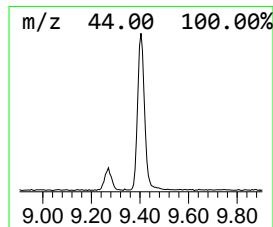
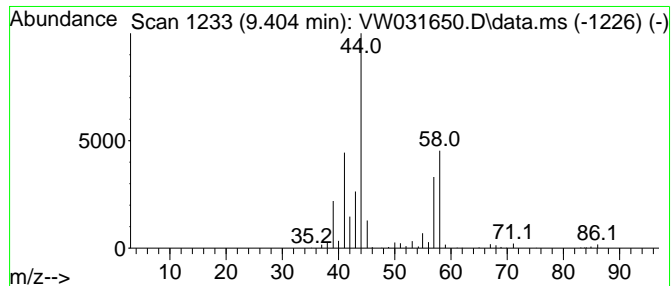
TIC Library : C:\Database\NIST20.L  
 TIC Integration Parameters: LSCINT.P

\*\*\*\*\*  
 Peak Number 1 Pentanal Concentration Rank 9

R.T.	EstConc	Area	Relative to ISTD	R.T.
9.404	3.21 ug/L	288559	1,4-Difluorobenzene	8.837

Hit# of 5	Tentative ID	MW	MolForm	CAS#	Qual
1	Pentanal	86	C5H10O	000110-62-3	90
2	Pentanal	86	C5H10O	000110-62-3	83
3	Butanal, 3-methyl-	86	C5H10O	000590-86-3	83
4	Butanal, 3-methyl-	86	C5H10O	000590-86-3	74
5	Pentanal	86	C5H10O	000110-62-3	64



Data Path : Z:\voasrv\HPCHEM1\MSVOA\_W\Data\VW012925\  
 Data File : VW031650.D  
 Acq On : 29 Jan 2025 18:46  
 Operator : SY/MD  
 Sample : Q1189-16  
 Misc : 11.32g/10mL/MSVOA\_W/SOIL/A  
 ALS Vial : 1 Sample Multiplier: 1

Instrument :  
 MSVOA\_W  
 ClientSampleId :  
 A44R7

Quant Method : Z:\voasrv\HPCHEM1\MSVOA\_W\Method\SFAMWLM011025SMA.M  
 Quant Title : SFAM01.0

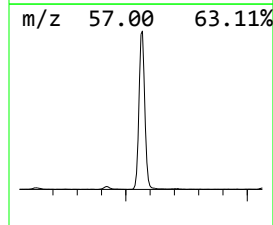
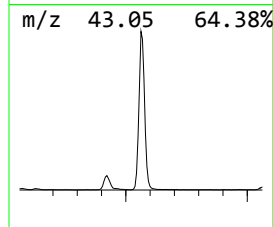
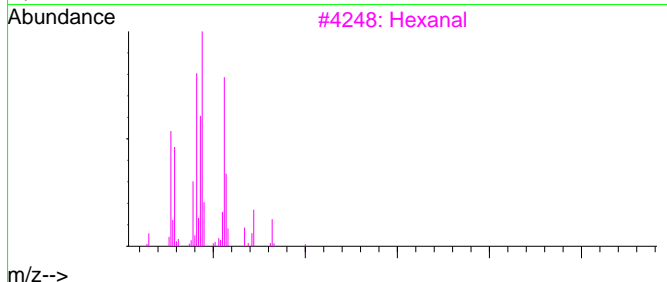
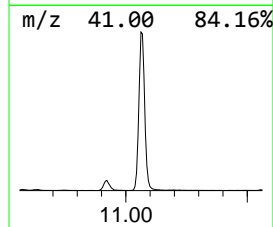
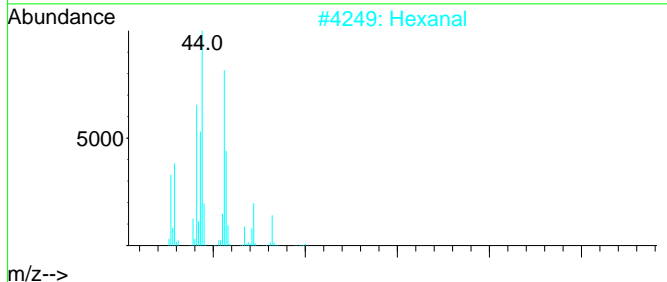
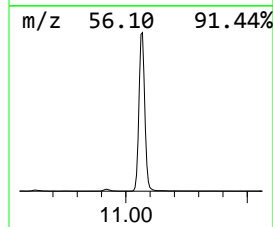
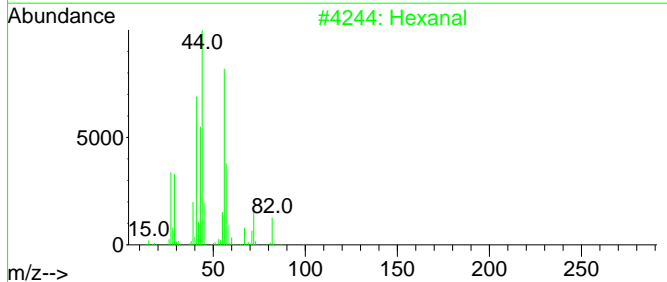
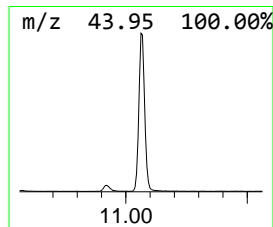
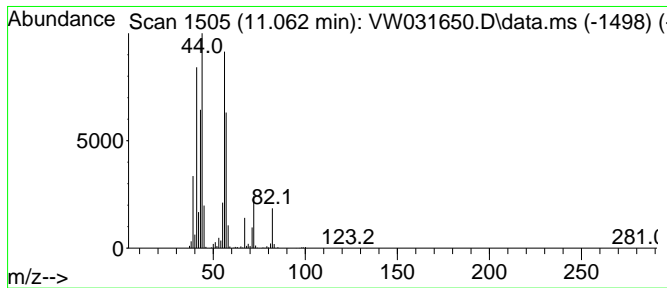
TIC Library : C:\Database\NIST20.L  
 TIC Integration Parameters: LSCINT.P

\*\*\*\*\*  
 Peak Number 3 Hexanal Concentration Rank 2

R.T.	EstConc	Area	Relative to ISTD	R.T.
11.062	18.48 ug/L	1786280	Chlorobenzene-d5	11.629

Hit#	of	Tentative ID	MW	MolForm	CAS#	Qual
1	5	Hexanal	100	C6H12O	000066-25-1	91
2		Hexanal	100	C6H12O	000066-25-1	90
3		Hexanal	100	C6H12O	000066-25-1	90
4		Hexanal	100	C6H12O	000066-25-1	83
5		Hexanal	100	C6H12O	000066-25-1	81



Data Path : Z:\voasrv\HPCHEM1\MSVOA\_W\Data\VW012925\  
 Data File : VW031650.D  
 Acq On : 29 Jan 2025 18:46  
 Operator : SY/MD  
 Sample : Q1189-16  
 Misc : 11.32g/10mL/MSVOA\_W/SOIL/A  
 ALS Vial : 1 Sample Multiplier: 1

Instrument :  
 MSVOA\_W  
 ClientSampleId :  
 A44R7

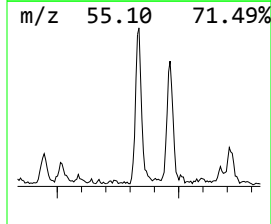
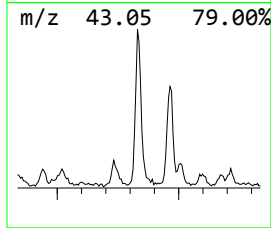
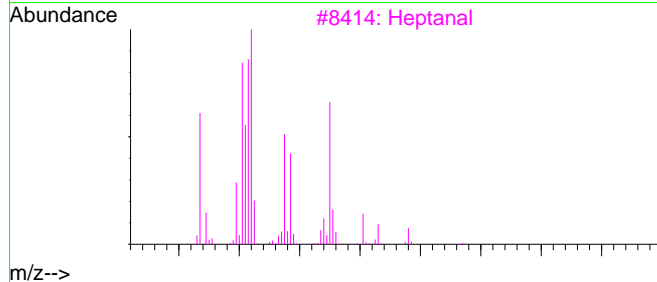
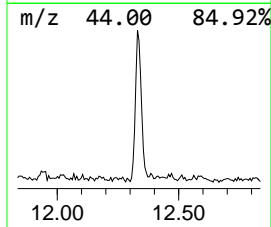
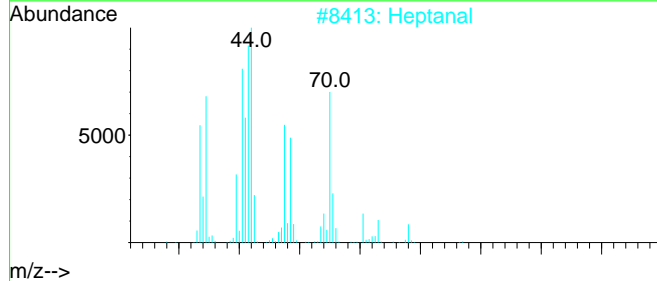
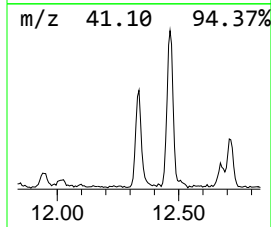
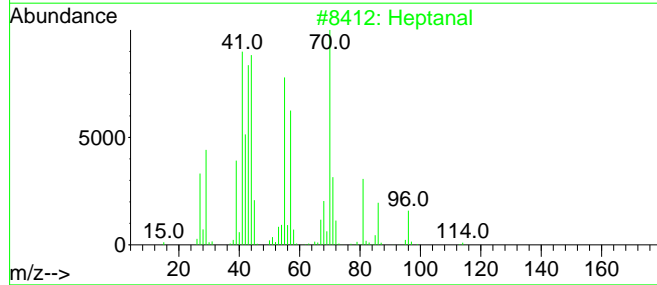
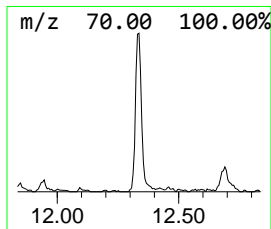
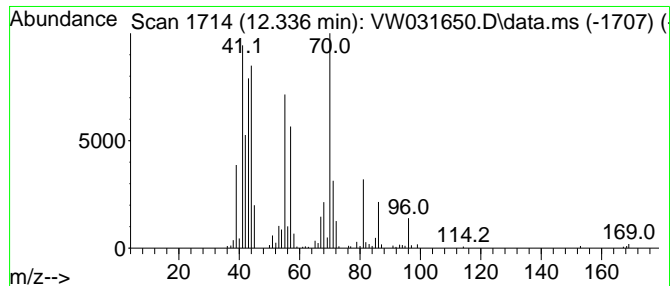
Quant Method : Z:\voasrv\HPCHEM1\MSVOA\_W\Method\SFAMWLM011025SMA.M  
 Quant Title : SFAM01.0

TIC Library : C:\Database\NIST20.L  
 TIC Integration Parameters: LSCINT.P

\*\*\*\*\*  
 Peak Number 4 Heptanal Concentration Rank 13

R.T.	EstConc	Area	Relative to ISTD	R.T.
12.336	1.46 ug/L	141046	Chlorobenzene-d5	11.629

Hit# of	5	Tentative ID	MW	MolForm	CAS#	Qual
1		Heptanal	114	C7H14O	000111-71-7	97
2		Heptanal	114	C7H14O	000111-71-7	94
3		Heptanal	114	C7H14O	000111-71-7	94
4		Heptanal	114	C7H14O	000111-71-7	80
5		Heptanal	114	C7H14O	000111-71-7	70



Data Path : Z:\voasrv\HPCHEM1\MSVOA\_W\Data\VW012925\  
 Data File : VW031650.D  
 Acq On : 29 Jan 2025 18:46  
 Operator : SY/MD  
 Sample : Q1189-16  
 Misc : 11.32g/10mL/MSVOA\_W/SOIL/A  
 ALS Vial : 1 Sample Multiplier: 1

Instrument :  
 MSVOA\_W  
 ClientSampleId :  
 A44R7

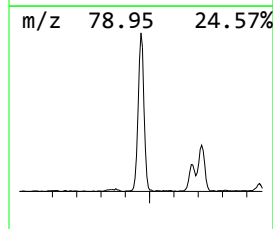
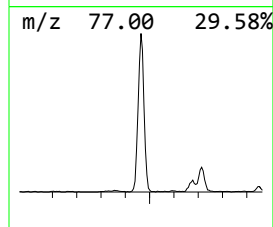
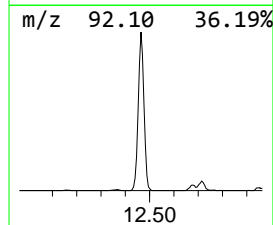
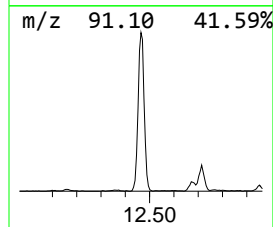
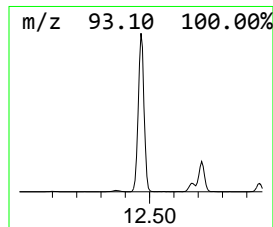
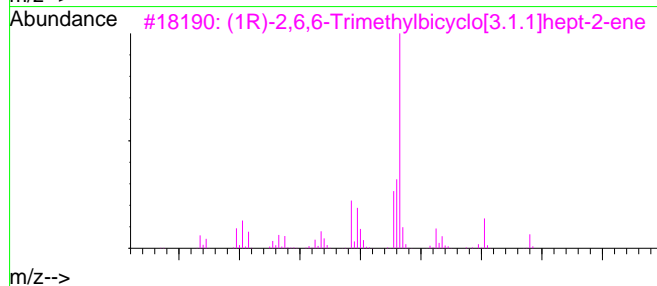
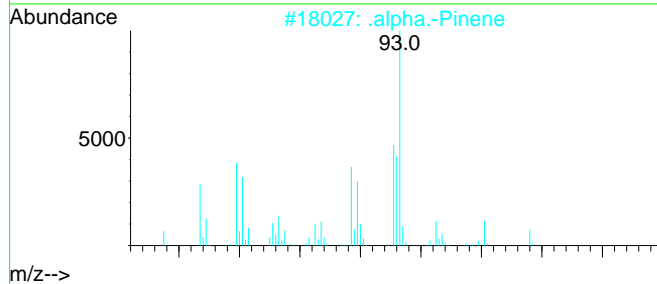
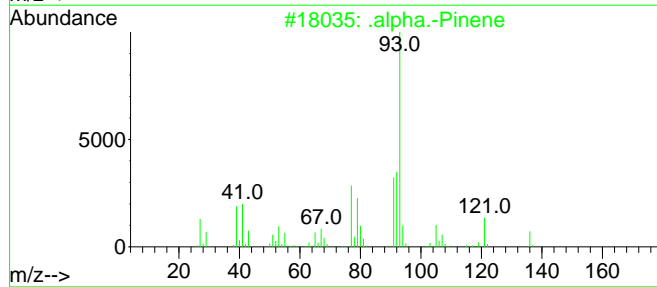
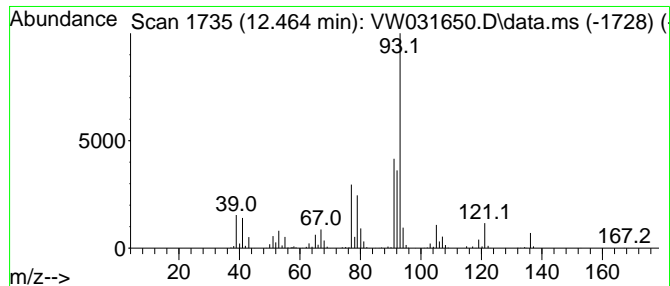
Quant Method : Z:\voasrv\HPCHEM1\MSVOA\_W\Method\SFAMWLM011025SMA.M  
 Quant Title : SFAM01.0

TIC Library : C:\Database\NIST20.L  
 TIC Integration Parameters: LSCINT.P

\*\*\*\*\*  
 Peak Number 5 .alpha.-Pinene Concentration Rank 6

R.T.	EstConc	Area	Relative to ISTD	R.T.
12.464	6.68 ug/L	645306	Chlorobenzene-d5	11.629

Hit#	of	Tentative ID	MW	MolForm	CAS#	Qual
1	5	.alpha.-Pinene	136	C10H16	000080-56-8	97
2		.alpha.-Pinene	136	C10H16	000080-56-8	95
3		(1R)-2,6,6-Trimethylbicyclo[3.1.1]hept-2-ene, 3,6,6-dimethyl-	136	C10H16	007785-70-8	94
4		Bicyclo[3.1.1]hept-2-ene, 3,6,6-dimethyl-	136	C10H16	004889-83-2	91
5		Bicyclo[3.1.1]heptane, 6,6-dimethyl-	136	C10H16	018172-67-3	90





Data Path : Z:\voasrv\HPCHEM1\MSVOA\_W\Data\VW012925\  
 Data File : VW031650.D  
 Acq On : 29 Jan 2025 18:46  
 Operator : SY/MD  
 Sample : Q1189-16  
 Misc : 11.32g/10mL/MSVOA\_W/SOIL/A  
 ALS Vial : 1 Sample Multiplier: 1

Instrument :  
 MSVOA\_W  
 ClientSampleId :  
 A44R7

Quant Method : Z:\voasrv\HPCHEM1\MSVOA\_W\Method\SFAMWLM011025SMA.M  
 Quant Title : SFAM01.0

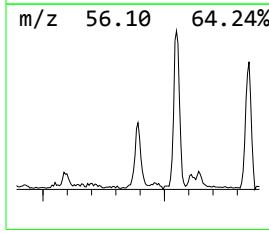
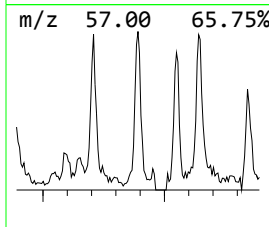
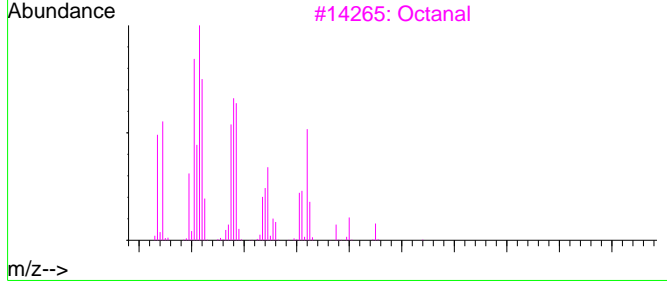
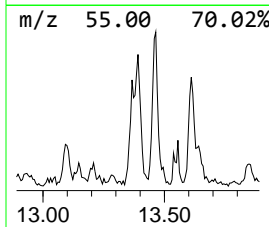
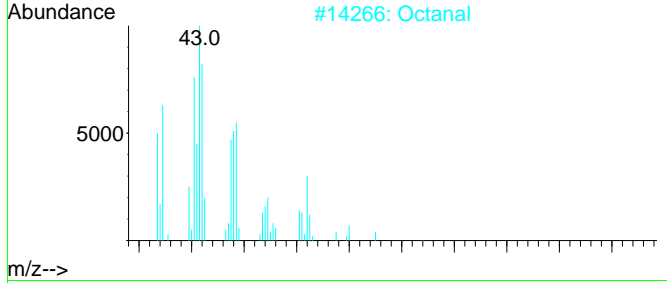
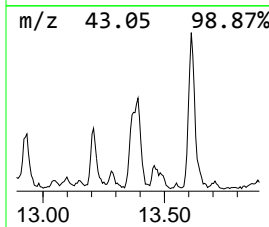
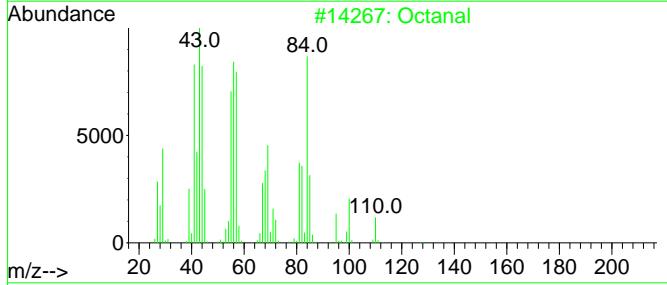
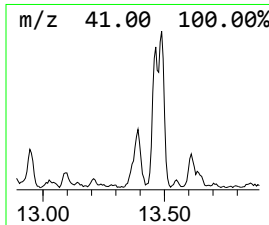
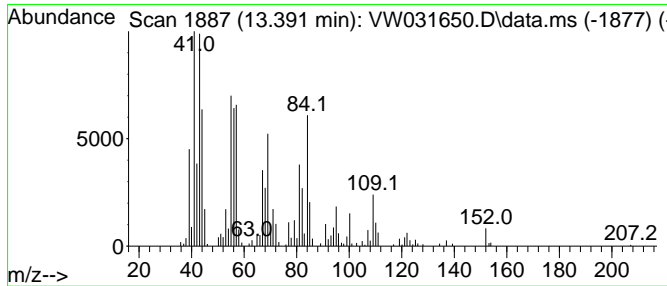
TIC Library : C:\Database\NIST20.L  
 TIC Integration Parameters: LSCINT.P

\*\*\*\*\*  
 Peak Number 7 Octanal Concentration Rank 8

R.T.	EstConc	Area	Relative to ISTD	R.T.
13.391	3.31 ug/L	225775	1,4-Dichlorobenzene-d4	13.550

Hit#	of	Tentative ID	MW	MolForm	CAS#	Qual
1	5	Octanal	128	C8H16O	000124-13-0	95
2		Octanal	128	C8H16O	000124-13-0	93
3		Octanal	128	C8H16O	000124-13-0	86
4		Octanal	128	C8H16O	000124-13-0	83
5		Octanal	128	C8H16O	000124-13-0	62



Data Path : Z:\voasrv\HPCHEM1\MSVOA\_W\Data\VW012925\  
 Data File : VW031650.D  
 Acq On : 29 Jan 2025 18:46  
 Operator : SY/MD  
 Sample : Q1189-16  
 Misc : 11.32g/10mL/MSVOA\_W/SOIL/A  
 ALS Vial : 1 Sample Multiplier: 1

Instrument :  
 MSVOA\_W  
 ClientSampleId :  
 A44R7

Quant Method : Z:\voasrv\HPCHEM1\MSVOA\_W\Method\SFAMWLM011025SMA.M  
 Quant Title : SFAM01.0

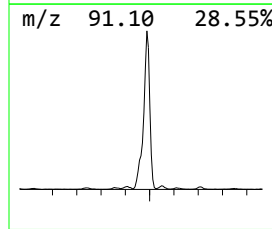
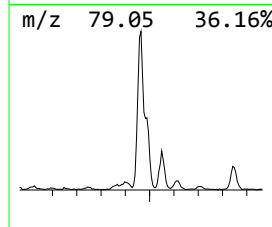
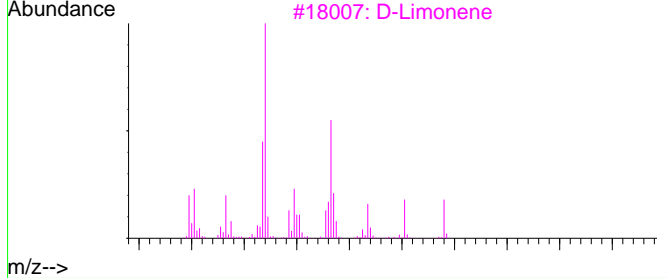
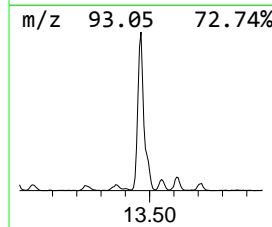
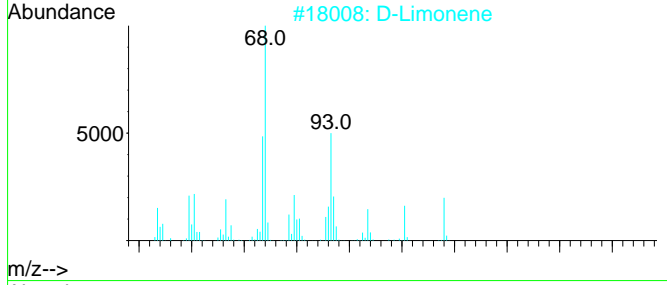
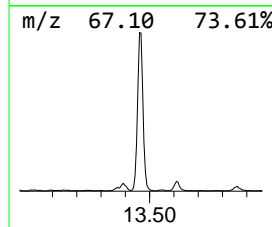
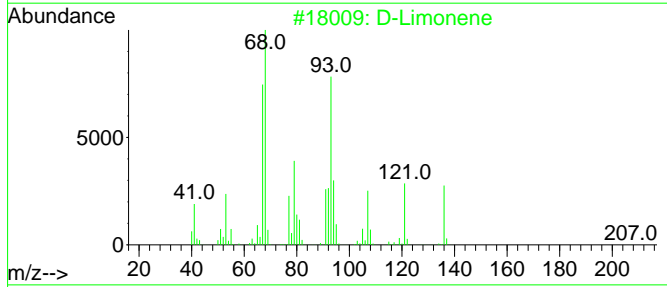
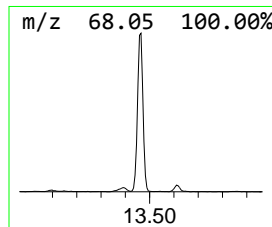
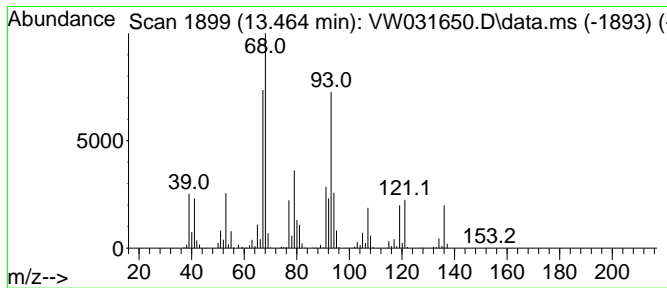
TIC Library : C:\Database\NIST20.L  
 TIC Integration Parameters: LSCINT.P

\*\*\*\*\*  
 Peak Number 8 D-Limonene Concentration Rank 3

R.T.	EstConc	Area	Relative to ISTD	R.T.
13.464	10.29 ug/L	703044	1,4-Dichlorobenzene-d4	13.550

Hit# of	Tentative ID	MW	MolForm	CAS#	Qual
1	D-Limonene	136	C10H16	005989-27-5	98
2	D-Limonene	136	C10H16	005989-27-5	96
3	D-Limonene	136	C10H16	005989-27-5	95
4	D-Limonene	136	C10H16	005989-27-5	94
5	Limonene	136	C10H16	000138-86-3	90



Data Path : Z:\voasrv\HPCHEM1\MSVOA\_W\Data\VW012925\  
 Data File : VW031650.D  
 Acq On : 29 Jan 2025 18:46  
 Operator : SY/MD  
 Sample : Q1189-16  
 Misc : 11.32g/10mL/MSVOA\_W/SOIL/A  
 ALS Vial : 1 Sample Multiplier: 1

Instrument :  
 MSVOA\_W  
 ClientSampleId :  
 A44R7

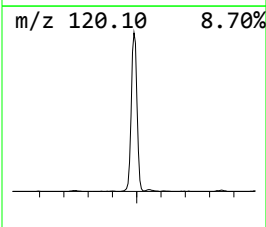
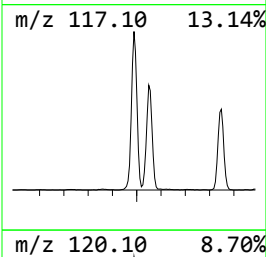
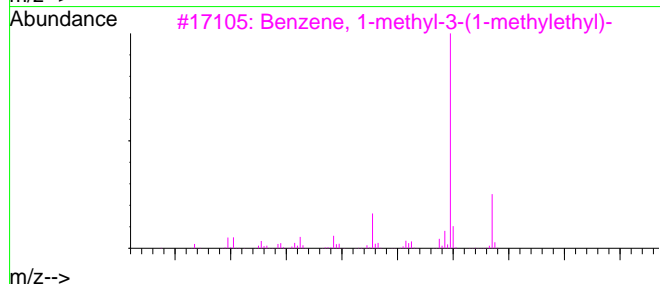
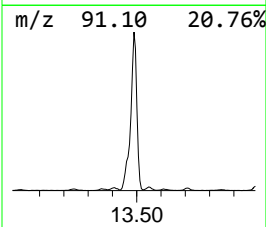
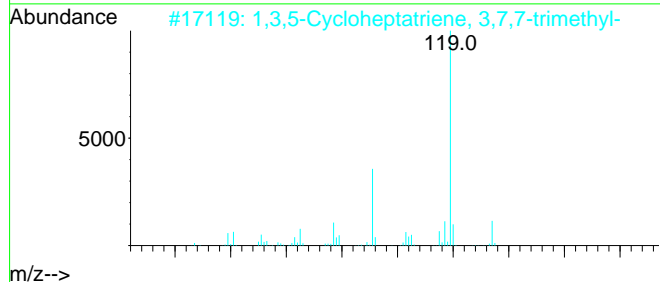
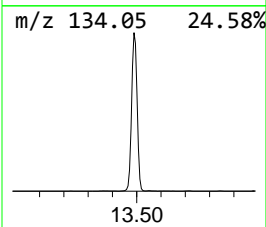
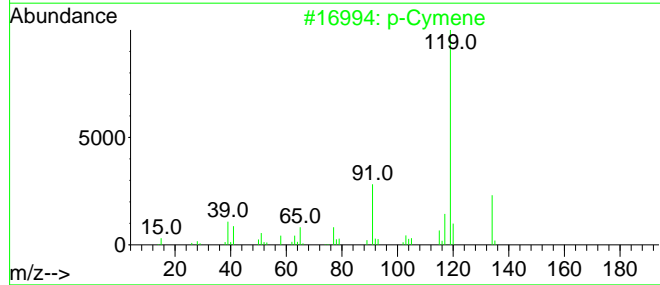
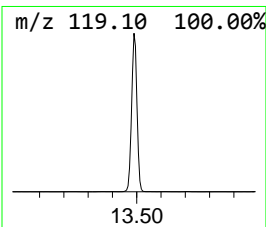
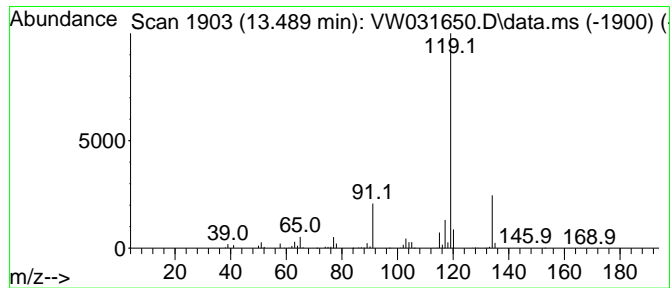
Quant Method : Z:\voasrv\HPCHEM1\MSVOA\_W\Method\SFAMWLM011025SMA.M  
 Quant Title : SFAM01.0

TIC Library : C:\Database\NIST20.L  
 TIC Integration Parameters: LSCINT.P

\*\*\*\*\*  
 Peak Number 9 p-Cymene Concentration Rank 1

R.T.	EstConc	Area	Relative to ISTD	R.T.
13.489	23.07 ug/L	1575600	1,4-Dichlorobenzene-d4	13.550

Hit#	of 5	Tentative ID	MW	MolForm	CAS#	Qual
1		p-Cymene	134	C10H14	000099-87-6	94
2		1,3,5-Cycloheptatriene, 3,7,7-tr...	134	C10H14	003479-89-8	91
3		Benzene, 1-methyl-3-(1-methyleth...	134	C10H14	000535-77-3	91
4		o-Cymene	134	C10H14	000527-84-4	91
5		p-Cymene	134	C10H14	000099-87-6	91



Data Path : Z:\voasrv\HPCHEM1\MSVOA\_W\Data\VW012925\  
 Data File : VW031650.D  
 Acq On : 29 Jan 2025 18:46  
 Operator : SY/MD  
 Sample : Q1189-16  
 Misc : 11.32g/10mL/MSVOA\_W/SOIL/A  
 ALS Vial : 1 Sample Multiplier: 1

Instrument :  
 MSVOA\_W  
 ClientSampleId :  
 A44R7

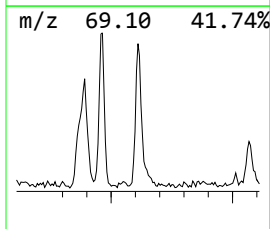
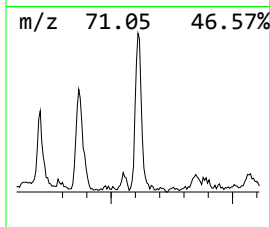
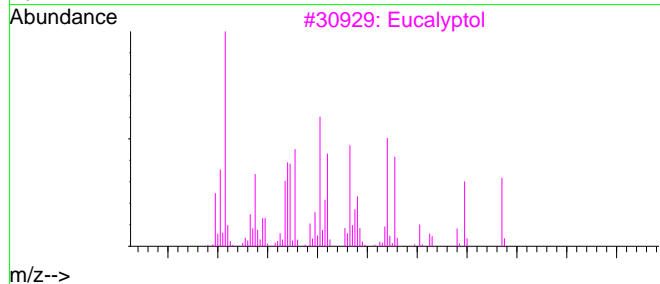
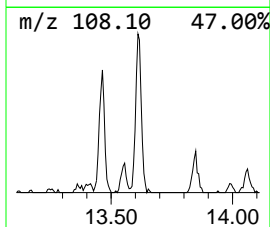
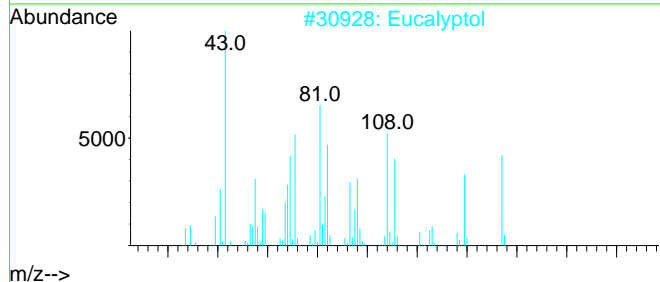
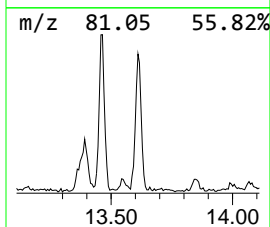
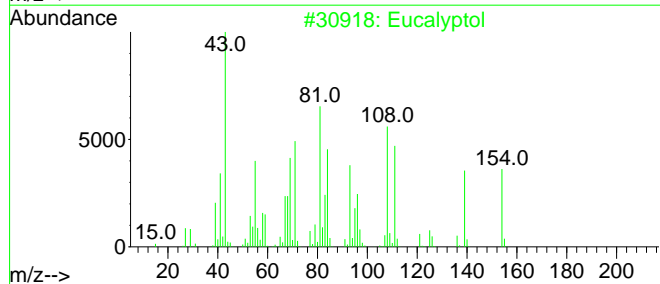
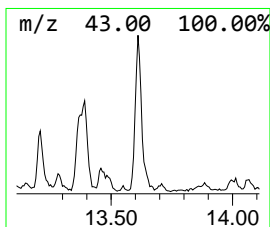
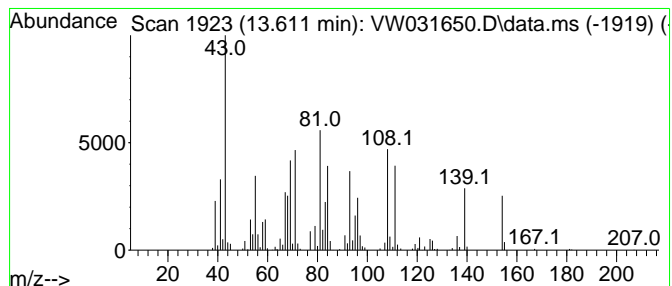
Quant Method : Z:\voasrv\HPCHEM1\MSVOA\_W\Method\SFAMWLM011025SMA.M  
 Quant Title : SFAM01.0

TIC Library : C:\Database\NIST20.L  
 TIC Integration Parameters: LSCINT.P

\*\*\*\*\*  
 Peak Number 10 Eucalyptol Concentration Rank 10

R.T.	EstConc	Area	Relative to ISTD	R.T.
13.611	3.04 ug/L	207439	1,4-Dichlorobenzene-d4	13.550

Hit#	of 5	Tentative ID	MW	MolForm	CAS#	Qual
1		Eucalyptol	154	C10H18O	000470-82-6	98
2		Eucalyptol	154	C10H18O	000470-82-6	96
3		Eucalyptol	154	C10H18O	000470-82-6	94
4		Eucalyptol	154	C10H18O	000470-82-6	93
5		Trifluoroacetyl-.alpha.-terpineol	250	C12H17F3O2	1000058-17-6	80



Data Path : Z:\voasrv\HPCHEM1\MSVOA\_W\Data\VW012925\  
 Data File : VW031650.D  
 Acq On : 29 Jan 2025 18:46  
 Operator : SY/MD  
 Sample : Q1189-16  
 Misc : 11.32g/10mL/MSVOA\_W/SOIL/A  
 ALS Vial : 1 Sample Multiplier: 1

Instrument :  
 MSVOA\_W  
 ClientSampleId :  
 A44R7

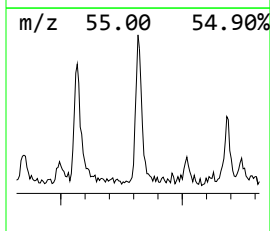
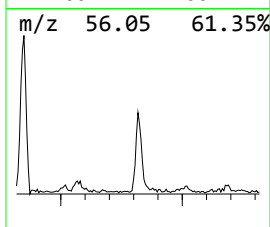
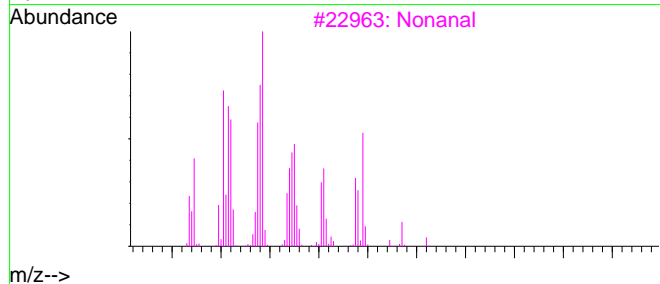
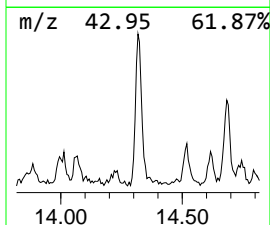
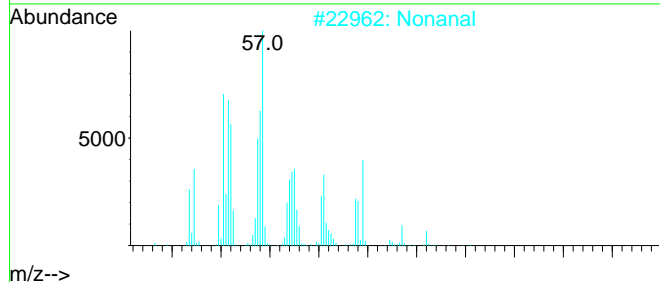
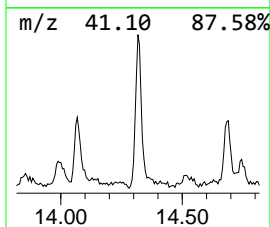
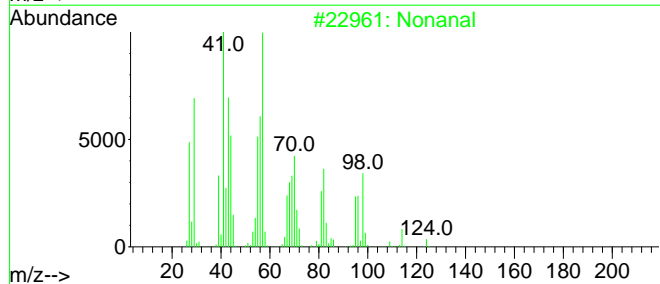
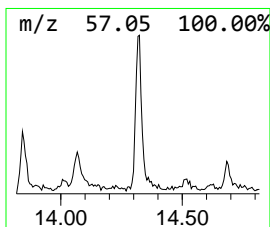
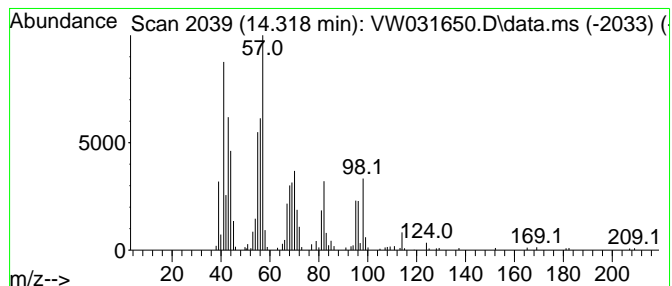
Quant Method : Z:\voasrv\HPCHEM1\MSVOA\_W\Method\SFAMWLM011025SMA.M  
 Quant Title : SFAM01.0

TIC Library : C:\Database\NIST20.L  
 TIC Integration Parameters: LSCINT.P

\*\*\*\*\*  
 Peak Number 12 Nonanal Concentration Rank 11

R.T.	EstConc	Area	Relative to ISTD	R.T.
14.318	1.72 ug/L	117418	1,4-Dichlorobenzene-d4	13.550

Hit#	of 5	Tentative ID	MW	MolForm	CAS#	Qual
1		Nonanal	142	C9H18O	000124-19-6	91
2		Nonanal	142	C9H18O	000124-19-6	91
3		Nonanal	142	C9H18O	000124-19-6	91
4		Nonanal	142	C9H18O	000124-19-6	90
5		Cycloheptane	98	C7H14	000291-64-5	30



Data Path : Z:\voasrv\HPCHEM1\MSVOA\_W\Data\VW012925\  
 Data File : VW031650.D  
 Acq On : 29 Jan 2025 18:46  
 Operator : SY/MD  
 Sample : Q1189-16  
 Misc : 11.32g/10mL/MSVOA\_W/SOIL/A  
 ALS Vial : 1 Sample Multiplier: 1

Instrument :  
 MSVOA\_W  
 ClientSampleId :  
 A44R7

Quant Method : Z:\voasrv\HPCHEM1\MSVOA\_W\Method\SFAMWLM011025SMA.M  
 Quant Title : SFAM01.0

TIC Library : C:\Database\NIST20.L  
 TIC Integration Parameters: LSCINT.P

TIC Top Hit name	RT	EstConc	Units	Response	--Internal Standard--			
					#	RT	Resp	Conc
Pentanal	9.404	3.2	ug/L	288559	1	8.837	2250290	25.0
Hexanal	11.062	18.5	ug/L	1786280	2	11.629	2416670	25.0
Heptanal	12.336	1.5	ug/L	141046	2	11.629	2416670	25.0
.alpha.-Pinene	12.464	6.7	ug/L	645306	2	11.629	2416670	25.0
Octanal	13.391	3.3	ug/L	225775	3	13.550	1707500	25.0
D-Limonene	13.464	10.3	ug/L	703044	3	13.550	1707500	25.0
p-Cymene	13.489	23.1	ug/L	1575600	3	13.550	1707500	25.0
Eucalyptol	13.611	3.0	ug/L	207439	3	13.550	1707500	25.0
Nonanal	14.318	1.7	ug/L	117418	3	13.550	1707500	25.0