

Data Path : Z:\voasrv\HPCHEM1\MSVOA_W\Data\VW013023\
 Data File : VW025251.D
 Acq On : 30 Jan 2023 15:51
 Operator : SY/MD
 Sample : VIBLK
 Misc : 5.00g/10mL/MSVOA_W/SOIL
 ALS Vial : 1 Sample Multiplier: 1

Instrument :
 MSVOA_W
 ClientSampleId :

Quant Time: Jan 31 01:41:07 2023
 Quant Method : Z:\voasrv\HPCHEM1\MSVOA_W\Method\SFAMWLM013023SMA.M
 Quant Title : SFAM01.0
 QLast Update : Tue Jan 31 01:26:27 2023
 Response via : Initial Calibration

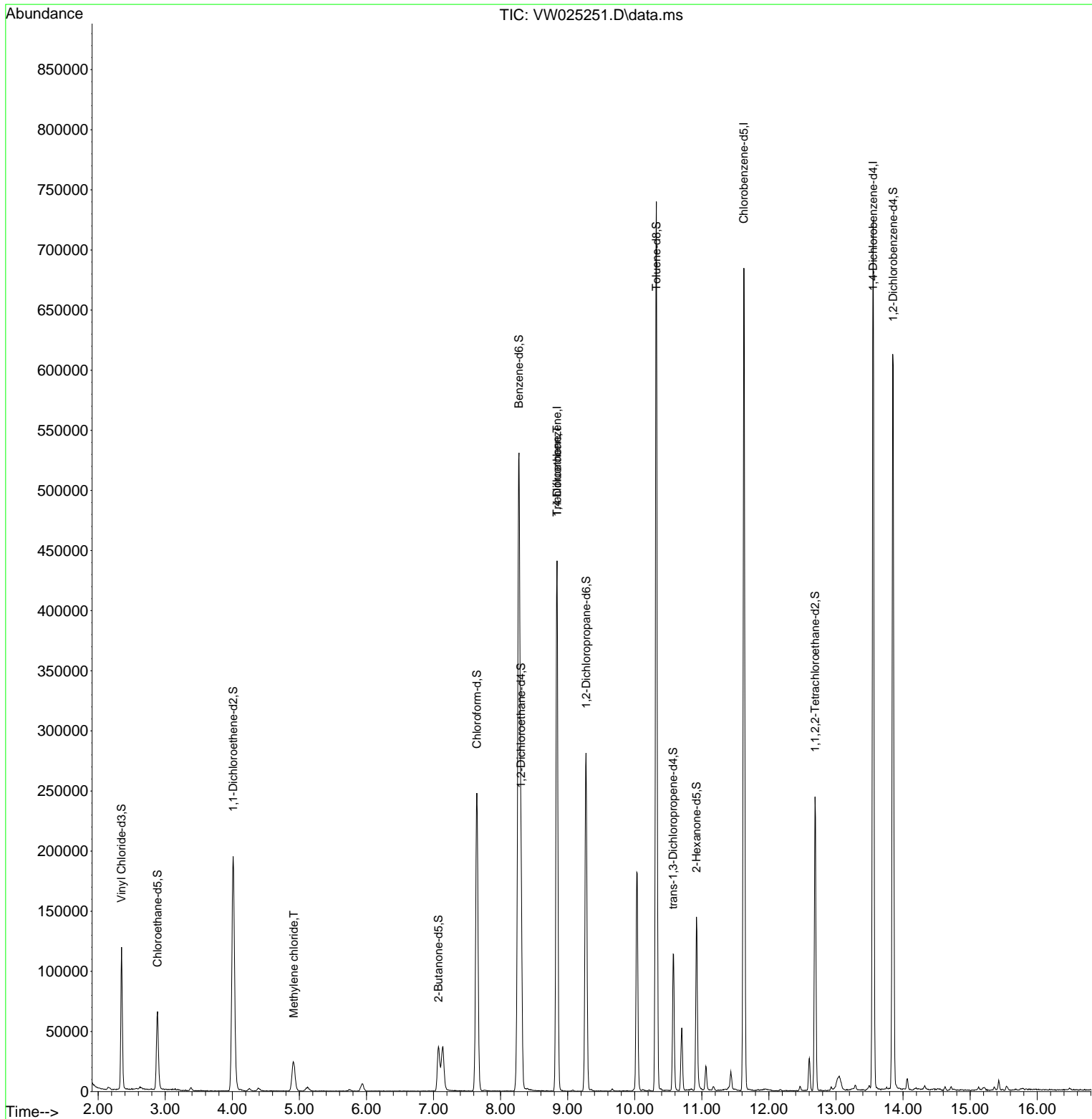
Compound	R.T.	QIon	Response	Conc	Units	Dev(Min)
Internal Standards						
1) 1,4-Difluorobenzene	8.842	114	367451	25.000	ug/L	0.00
28) Chlorobenzene-d5	11.628	117	372020	25.000	ug/L	0.00
58) 1,4-Dichlorobenzene-d4	13.554	152	183264	25.000	ug/L	0.00
System Monitoring Compounds						
4) Vinyl Chloride-d3	2.349	65	110597	26.955	ug/L	0.00
Spiked Amount	25.000	Range 30 - 150	Recovery =	107.800%		
7) Chloroethane-d5	2.885	69	72747	27.583	ug/L	0.00
Spiked Amount	25.000	Range 30 - 150	Recovery =	110.320%		
11) 1,1-Dichloroethene-d2	4.013	63	195630	20.309	ug/L	0.00
Spiked Amount	25.000	Range 45 - 110	Recovery =	81.240%		
21) 2-Butanone-d5	7.074	46	63786	56.947	ug/L	0.00
Spiked Amount	50.000	Range 20 - 135	Recovery =	113.900%		
24) Chloroform-d	7.647	84	259286	26.597	ug/L	0.00
Spiked Amount	25.000	Range 40 - 150	Recovery =	106.400%		
26) 1,2-Dichloroethane-d4	8.305	65	144722	27.716	ug/L	0.00
Spiked Amount	25.000	Range 70 - 130	Recovery =	110.880%		
32) Benzene-d6	8.275	84	547532	24.819	ug/L	0.00
Spiked Amount	25.000	Range 20 - 135	Recovery =	99.280%		
36) 1,2-Dichloropropane-d6	9.274	67	129750	20.321	ug/L	0.00
Spiked Amount	25.000	Range 70 - 120	Recovery =	81.280%		
41) Toluene-d8	10.323	98	490052	24.071	ug/L	0.00
Spiked Amount	25.000	Range 30 - 130	Recovery =	96.280%		
43) trans-1,3-Dichloroprop...	10.573	79	66826	23.768	ug/L	0.00
Spiked Amount	25.000	Range 30 - 135	Recovery =	95.080%		
47) 2-Hexanone-d5	10.920	63	51155	50.197	ug/L	0.00
Spiked Amount	50.000	Range 20 - 135	Recovery =	100.400%		
56) 1,1,2,2-Tetrachloroeth...	12.688	84	121517	24.706	ug/L	0.00
Spiked Amount	25.000	Range 45 - 120	Recovery =	98.840%		
66) 1,2-Dichlorobenzene-d4	13.853	152	159316	24.328	ug/L	0.00
Spiked Amount	25.000	Range 75 - 120	Recovery =	97.320%		
Target Compounds						
16) Methylene chloride	4.915	84	20306	3.484	ug/L	90
34) Trichloroethene	8.842	95	11448	1.721	ug/L #	6

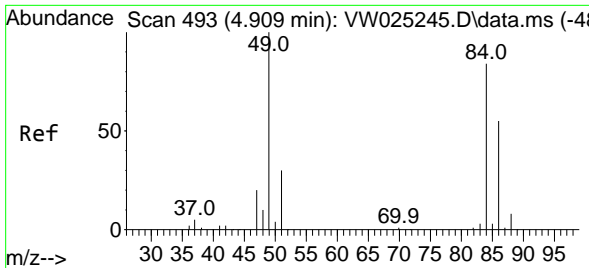
(#) = qualifier out of range (m) = manual integration (+) = signals summed

Data Path : Z:\voasrv\HPCHEM1\MSVOA_W\Data\VW013023\
 Data File : VW025251.D
 Acq On : 30 Jan 2023 15:51
 Operator : SY/MD
 Sample : VIBLK
 Misc : 5.00g/10mL/MSVOA_W/SOIL
 ALS Vial : 1 Sample Multiplier: 1

Instrument :
 MSVOA_W
 ClientSampleId :

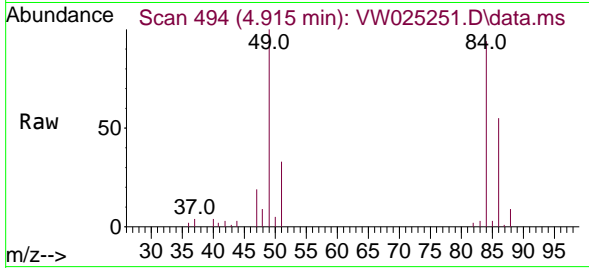
Quant Time: Jan 31 01:41:07 2023
 Quant Method : Z:\voasrv\HPCHEM1\MSVOA_W\Method\SFAMWLM013023SMA.M
 Quant Title : SFAM01.0
 QLast Update : Tue Jan 31 01:26:27 2023
 Response via : Initial Calibration





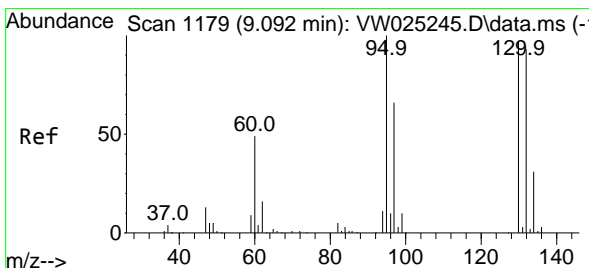
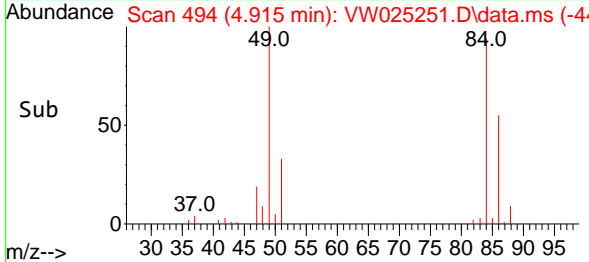
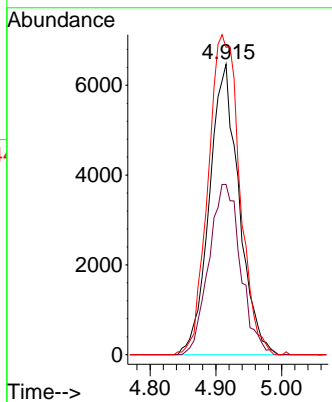
#16
 Methylene chloride
 Concen: 3.484 ug/L
 RT: 4.915 min Scan# 494
 Delta R.T. 0.006 min
 Lab File: VW025251.D
 Acq: 30 Jan 2023 15:51

Instrument :
 MSVOA_W
 ClientSampleId :



Tgt Ion: 84 Resp: 20306

Ion	Ratio	Lower	Upper
84	100		
86	58.6	45.5	84.5
49	105.8	83.1	154.3



#34
 Trichloroethene
 Concen: 1.721 ug/L
 RT: 8.842 min Scan# 1138
 Delta R.T. -0.250 min
 Lab File: VW025251.D
 Acq: 30 Jan 2023 15:51

Tgt Ion: 95 Resp: 11448

Ion	Ratio	Lower	Upper
95	100		
97	0.0	46.5	86.3#
132	0.0	65.4	121.4#
130	0.0	68.3	126.8#

