

Data Path : Z:\voasrv\HPCHEM1\MSVOA_W\Data\VW020124\
 Data File : VW027906.D
 Acq On : 01 Feb 2024 15:28
 Operator : SY/MD
 Sample : P1303-12
 Misc : 4.23g/10mL/MSVOA_W/SOIL/A
 ALS Vial : 1 Sample Multiplier: 1

Instrument :
 MSVOA_W
 ClientSampleId :

Quant Time: Feb 01 21:40:36 2024
 Quant Method : Z:\voasrv\HPCHEM1\MSVOA_W\Method\SFAMWLM010824SMA.M
 Quant Title : SFAM01.0
 QLast Update : Thu Feb 01 21:37:27 2024
 Response via : Initial Calibration

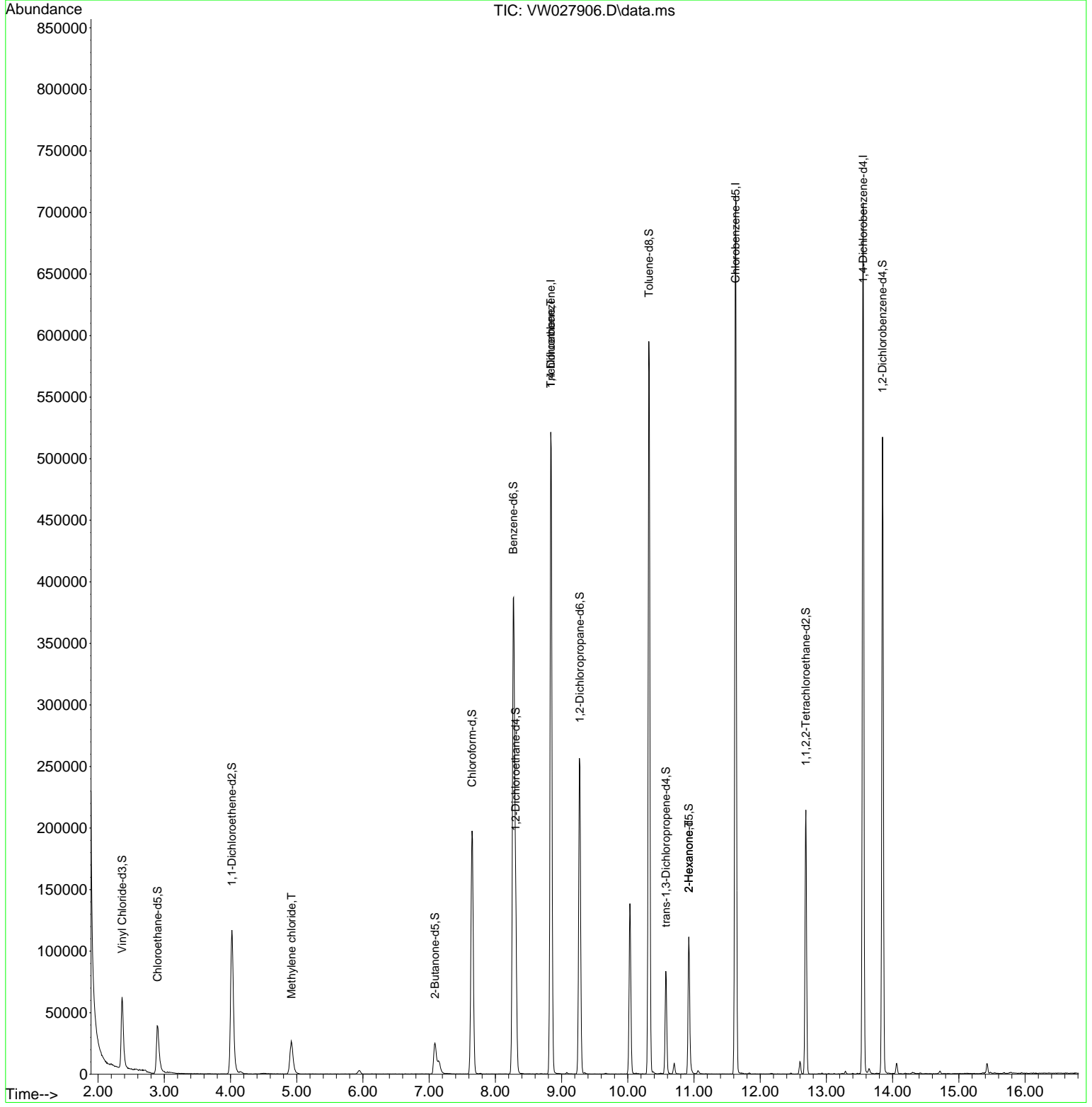
Compound	R.T.	QIon	Response	Conc	Units	Dev(Min)
Internal Standards						
1) 1,4-Difluorobenzene	8.837	114	488219	25.000	ug/L	0.00
28) Chlorobenzene-d5	11.629	117	429724	25.000	ug/L	0.00
58) 1,4-Dichlorobenzene-d4	13.556	152	198865	25.000	ug/L	0.00
System Monitoring Compounds						
4) Vinyl Chloride-d3	2.363	65	87109	14.619	ug/L	0.00
Spiked Amount	25.000	Range 30 - 150	Recovery =	58.480%		
7) Chloroethane-d5	2.899	69	63633	12.181	ug/L	0.00
Spiked Amount	25.000	Range 30 - 150	Recovery =	48.720%		
11) 1,1-Dichloroethene-d2	4.021	65	39456	14.720	ug/L	0.00
Spiked Amount	25.000	Range 45 - 110	Recovery =	58.880%		
21) 2-Butanone-d5	7.088	46	43991	44.645	ug/L	0.00
Spiked Amount	50.000	Range 20 - 135	Recovery =	89.280%		
24) Chloroform-d	7.648	84	216158	18.310	ug/L	0.00
Spiked Amount	25.000	Range 40 - 150	Recovery =	73.240%		
26) 1,2-Dichloroethane-d4	8.307	65	103938	19.433	ug/L	0.00
Spiked Amount	25.000	Range 70 - 130	Recovery =	77.720%		
32) Benzene-d6	8.270	84	434438	17.812	ug/L	0.00
Spiked Amount	25.000	Range 20 - 135	Recovery =	71.240%		
36) 1,2-Dichloropropane-d6	9.276	67	127051	18.829	ug/L	0.00
Spiked Amount	25.000	Range 70 - 120	Recovery =	75.320%		
41) Toluene-d8	10.319	98	424501	18.618	ug/L	0.00
Spiked Amount	25.000	Range 30 - 130	Recovery =	74.480%		
43) trans-1,3-Dichloroprop...	10.575	79	49137	18.734	ug/L	0.00
Spiked Amount	25.000	Range 30 - 135	Recovery =	74.920%		
47) 2-Hexanone-d5	10.922	63	40830	46.100	ug/L	0.00
Spiked Amount	50.000	Range 20 - 135	Recovery =	92.200%		
56) 1,1,2,2-Tetrachloroeth...	12.690	84	108982	22.673	ug/L	0.00
Spiked Amount	25.000	Range 45 - 120	Recovery =	90.680%		
66) 1,2-Dichlorobenzene-d4	13.849	152	145439	20.804	ug/L	0.00
Spiked Amount	25.000	Range 75 - 120	Recovery =	83.200%		
Target Compounds						
16) Methylene chloride	4.923	84	24900	3.518	ug/L	97
34) Trichloroethene	8.837	95	13547	2.089	ug/L #	3
48) 2-Hexanone	10.922	43	5424	3.361	ug/L #	61

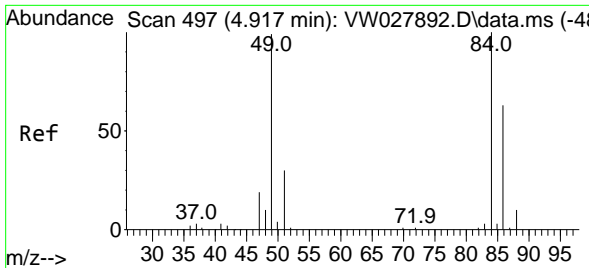
(#) = qualifier out of range (m) = manual integration (+) = signals summed

Data Path : Z:\voasrv\HPCHEM1\MSVOA_W\Data\VW020124\
 Data File : VW027906.D
 Acq On : 01 Feb 2024 15:28
 Operator : SY/MD
 Sample : P1303-12
 Misc : 4.23g/10mL/MSVOA_W/SOIL/A
 ALS Vial : 1 Sample Multiplier: 1

Instrument :
 MSVOA_W
 ClientSampleId :

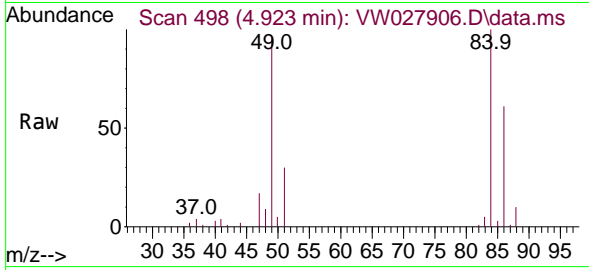
Quant Time: Feb 01 21:40:36 2024
 Quant Method : Z:\voasrv\HPCHEM1\MSVOA_W\Method\SFAMWLM010824SMA.M
 Quant Title : SFAM01.0
 QLast Update : Thu Feb 01 21:37:27 2024
 Response via : Initial Calibration





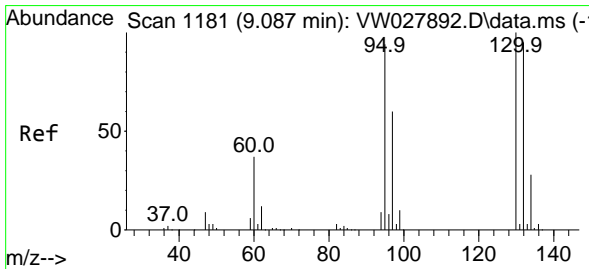
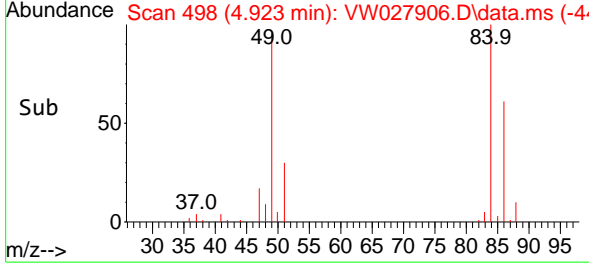
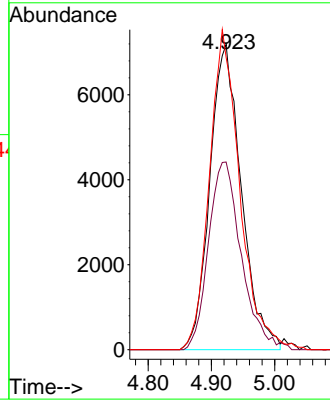
#16
 Methylene chloride
 Concen: 3.518 ug/L
 RT: 4.923 min Scan# 49
 Delta R.T. 0.006 min
 Lab File: VW027906.D
 Acq: 01 Feb 2024 15:28

Instrument :
 MSVOA_W
 ClientSampleId :



Tgt Ion: 84 Resp: 24900

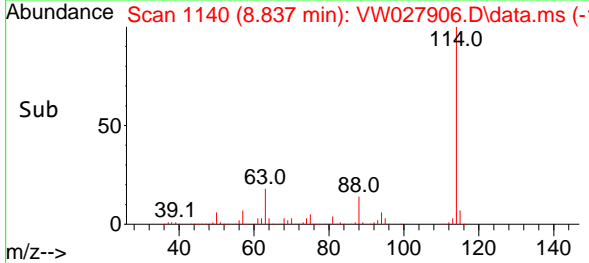
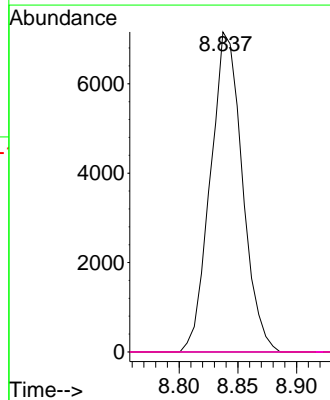
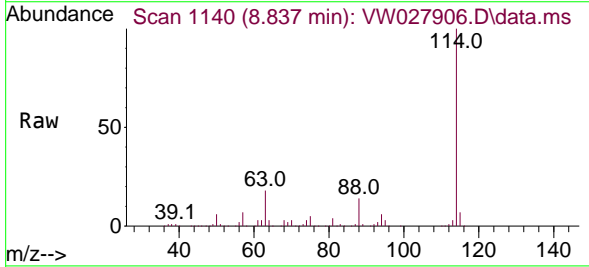
Ion	Ratio	Lower	Upper
84	100		
86	61.5	43.5	80.9
49	95.8	70.3	130.5

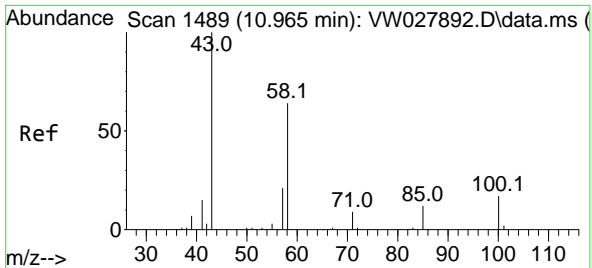


#34
 Trichloroethene
 Concen: 2.089 ug/L
 RT: 8.837 min Scan# 1140
 Delta R.T. -0.250 min
 Lab File: VW027906.D
 Acq: 01 Feb 2024 15:28

Tgt Ion: 95 Resp: 13547

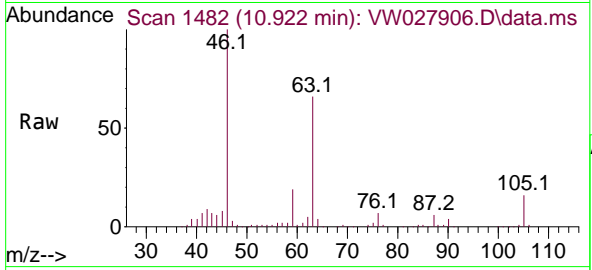
Ion	Ratio	Lower	Upper
95	100		
97	0.0	45.1	83.9#
132	0.0	74.1	137.5#
130	0.0	73.3	136.1#





#48
 2-Hexanone
 Concen: 3.361 ug/L
 RT: 10.922 min Scan# 14
 Delta R.T. -0.042 min
 Lab File: VW027906.D
 Acq: 01 Feb 2024 15:28

Instrument : MSVOA_W
 ClientSampleId :



Tgt Ion: 43 Resp: 5424

Ion	Ratio	Lower	Upper
43	100		
58	22.8	49.3	73.9#
57	24.4	17.0	25.4
100	1.1	12.9	19.3#

