

Data Path : Z:\voasrv\HPCHEM1\MSVOA_W\Data\VW020224\
 Data File : VW027931.D
 Acq On : 02 Feb 2024 15:44
 Operator : SY/MD
 Sample : P1286-12
 Misc : 4.80g/10mL/MSVOA_W/SOIL/A
 ALS Vial : 1 Sample Multiplier: 1

Instrument :
 MSVOA_W
 ClientSampleId :

Quant Time: Feb 02 23:04:35 2024
 Quant Method : Z:\voasrv\HPCHEM1\MSVOA_W\Method\SFAMWLM010824SMA.M
 Quant Title : SFAM01.0
 QLast Update : Fri Feb 02 23:01:12 2024
 Response via : Initial Calibration

Compound	R.T.	QIon	Response	Conc	Units	Dev(Min)

Internal Standards						
1) 1,4-Difluorobenzene	8.843	114	438330	25.000	ug/L	0.00
28) Chlorobenzene-d5	11.629	117	391150	25.000	ug/L	0.00
58) 1,4-Dichlorobenzene-d4	13.556	152	193022	25.000	ug/L	0.00
System Monitoring Compounds						
4) Vinyl Chloride-d3	2.363	65	81192	15.176	ug/L	0.00
Spiked Amount	25.000	Range 30 - 150	Recovery =	60.720%		
7) Chloroethane-d5	2.899	69	70978	15.133	ug/L	0.00
Spiked Amount	25.000	Range 30 - 150	Recovery =	60.520%		
11) 1,1-Dichloroethene-d2	4.021	65	36361	15.109	ug/L	0.00
Spiked Amount	25.000	Range 45 - 110	Recovery =	60.440%		
21) 2-Butanone-d5	7.087	46	45686	51.642	ug/L	0.00
Spiked Amount	50.000	Range 20 - 135	Recovery =	103.280%		
24) Chloroform-d	7.648	84	210279	19.839	ug/L	0.00
Spiked Amount	25.000	Range 40 - 150	Recovery =	79.360%		
26) 1,2-Dichloroethane-d4	8.307	65	102309	21.305	ug/L	0.00
Spiked Amount	25.000	Range 70 - 130	Recovery =	85.240%		
32) Benzene-d6	8.276	84	416097	18.743	ug/L	0.00
Spiked Amount	25.000	Range 20 - 135	Recovery =	74.960%		
36) 1,2-Dichloropropane-d6	9.270	67	122687	19.976	ug/L	0.00
Spiked Amount	25.000	Range 70 - 120	Recovery =	79.920%		
41) Toluene-d8	10.319	98	396419	19.100	ug/L	0.00
Spiked Amount	25.000	Range 30 - 130	Recovery =	76.400%		
43) trans-1,3-Dichloroprop...	10.575	79	47928	20.076	ug/L	0.00
Spiked Amount	25.000	Range 30 - 135	Recovery =	80.320%		
47) 2-Hexanone-d5	10.922	63	44054	54.645	ug/L	0.00
Spiked Amount	50.000	Range 20 - 135	Recovery =	109.280%		
56) 1,1,2,2-Tetrachloroeth...	12.690	84	107896	24.660	ug/L	0.00
Spiked Amount	25.000	Range 45 - 120	Recovery =	98.640%		
66) 1,2-Dichlorobenzene-d4	13.848	152	144642	21.317	ug/L	0.00
Spiked Amount	25.000	Range 75 - 120	Recovery =	85.280%		

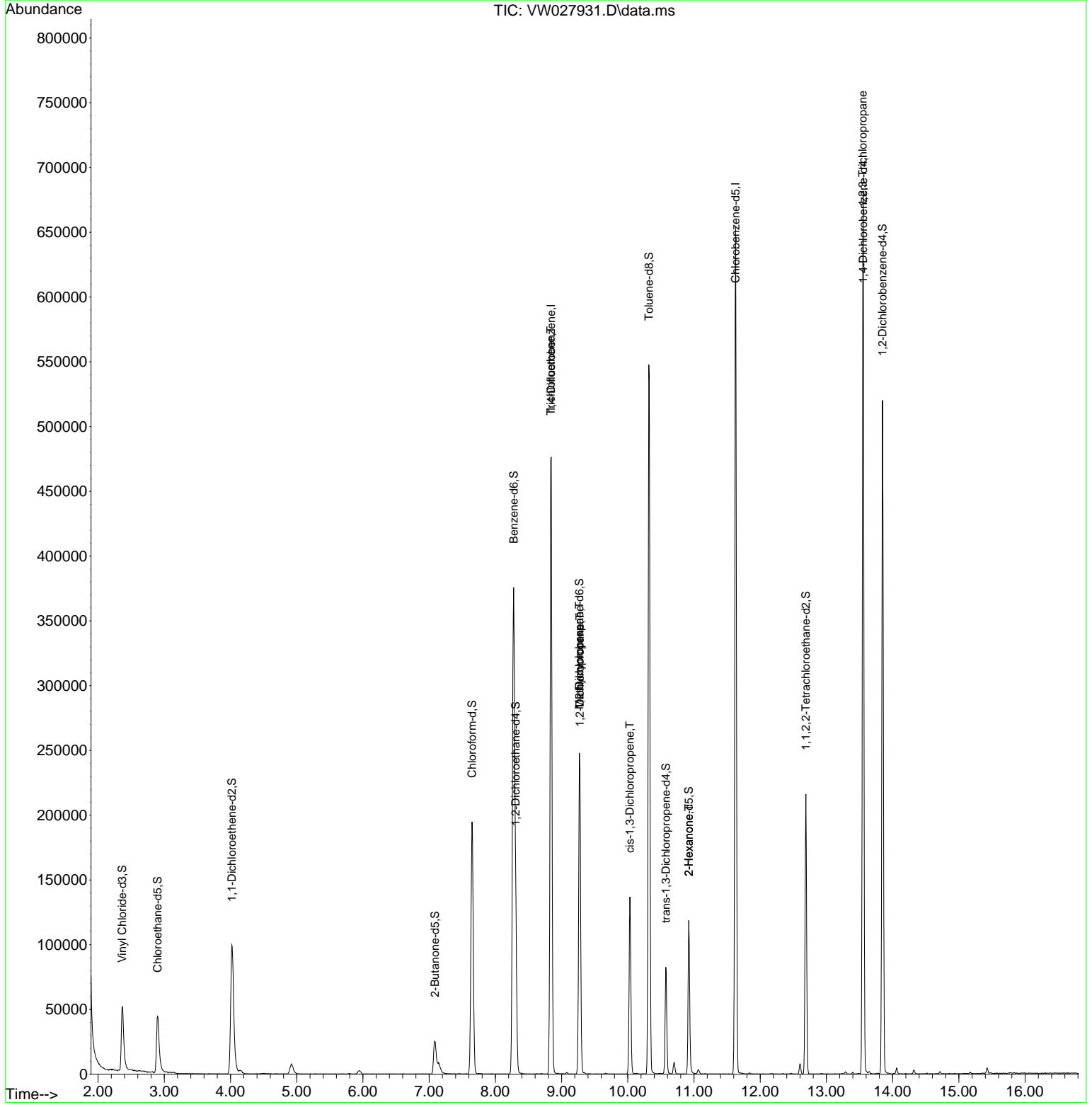
Target Compounds						Qvalue
34) Trichloroethene	8.837	95	12079	2.047	ug/L #	3
35) Methylcyclohexane	9.270	83	30587	3.079	ug/L #	21
37) 1,2-Dichloropropane	9.276	63	12994	2.498	ug/L #	84
39) cis-1,3-Dichloropropene	10.032	75	3355	0.419	ug/L #	67
48) 2-Hexanone	10.922	43	4474	3.045	ug/L #	63
61) 1,2,3-Trichloropropane	13.550	75	19569	6.695	ug/L #	66

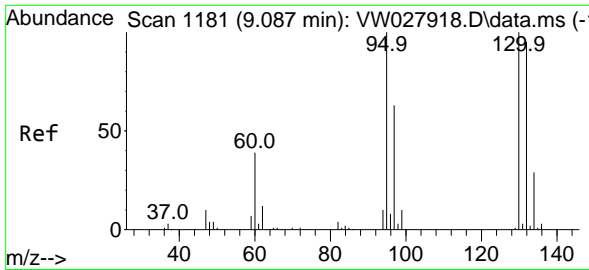
(#) = qualifier out of range (m) = manual integration (+) = signals summed

Data Path : Z:\voasrv\HPCHEM1\MSVOA_W\Data\VW020224\
 Data File : VW027931.D
 Acq On : 02 Feb 2024 15:44
 Operator : SY/MD
 Sample : P1286-12
 Misc : 4.80g/10mL/MSVOA_W/SOIL/A
 ALS Vial : 1 Sample Multiplier: 1

Instrument :
 MSVOA_W
 ClientSampleId :

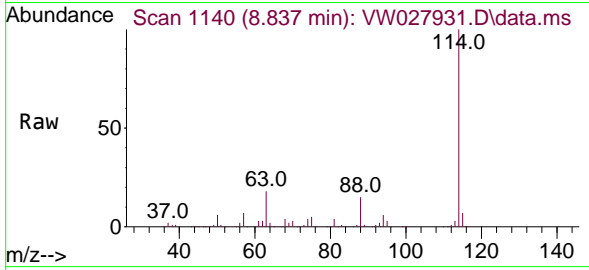
Quant Time: Feb 02 23:04:35 2024
 Quant Method : Z:\voasrv\HPCHEM1\MSVOA_W\Method\SFAMWLM010824SMA.M
 Quant Title : SFAM01.0
 QLast Update : Fri Feb 02 23:01:12 2024
 Response via : Initial Calibration





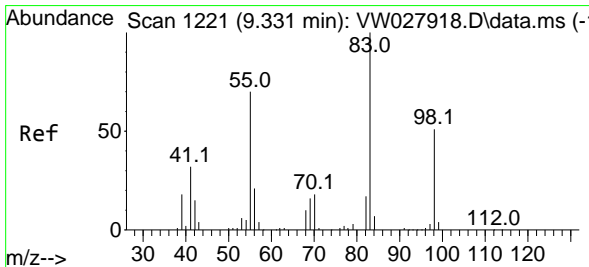
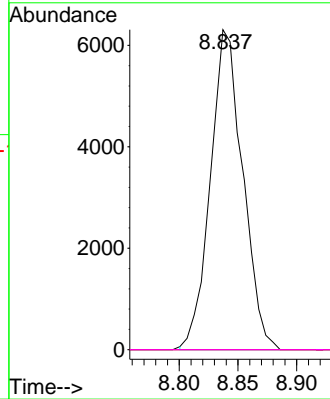
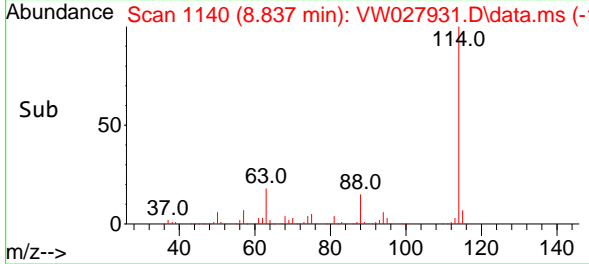
#34
 Trichloroethene
 Concen: 2.047 ug/L
 RT: 8.837 min Scan# 1114
 Delta R.T. -0.250 min
 Lab File: VW027931.D
 Acq: 02 Feb 2024 15:44

Instrument :
 MSVOA_W
 ClientSampleId :

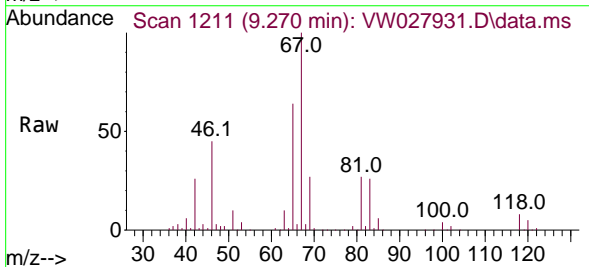


Tgt Ion: 95 Resp: 12079

Ion	Ratio	Lower	Upper
95	100		
97	0.0	45.1	83.9#
132	0.0	74.1	137.5#
130	0.0	73.3	136.1#

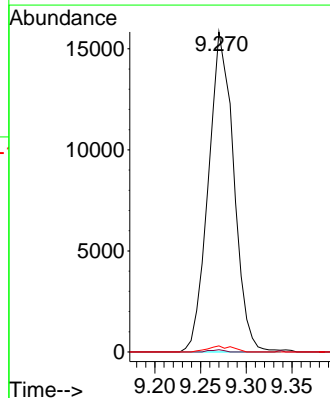
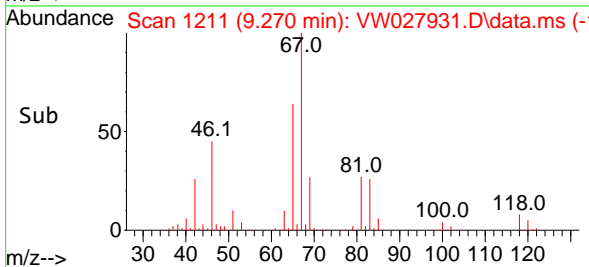


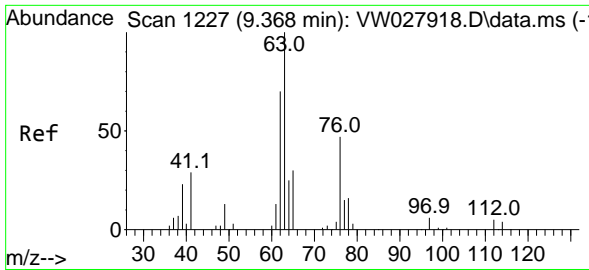
#35
 Methylcyclohexane
 Concen: 3.079 ug/L
 RT: 9.270 min Scan# 1211
 Delta R.T. -0.061 min
 Lab File: VW027931.D
 Acq: 02 Feb 2024 15:44



Tgt Ion: 83 Resp: 30587

Ion	Ratio	Lower	Upper
83	100		
55	0.4	54.7	82.1#
98	1.2	41.0	61.4#

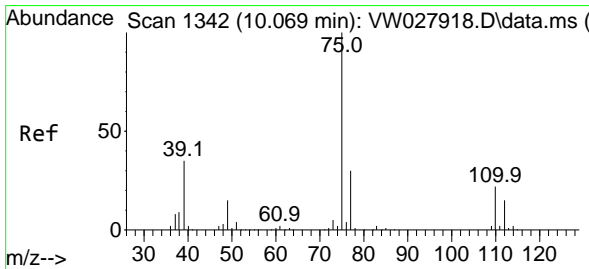
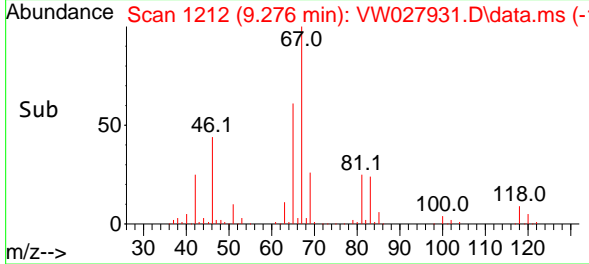
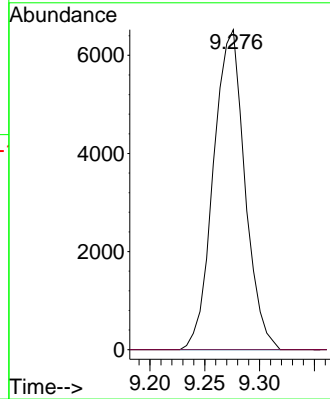
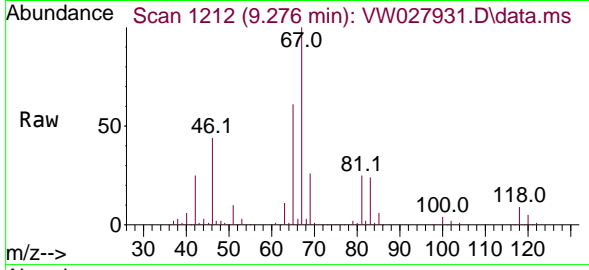




#37
 1,2-Dichloropropane
 Concen: 2.498 ug/L
 RT: 9.276 min Scan# 111
 Delta R.T. -0.091 min
 Lab File: VW027931.D
 Acq: 02 Feb 2024 15:44

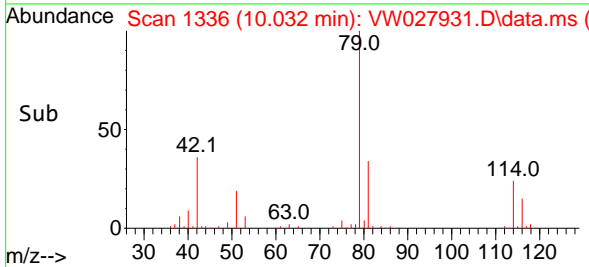
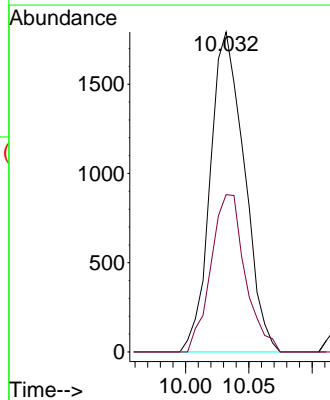
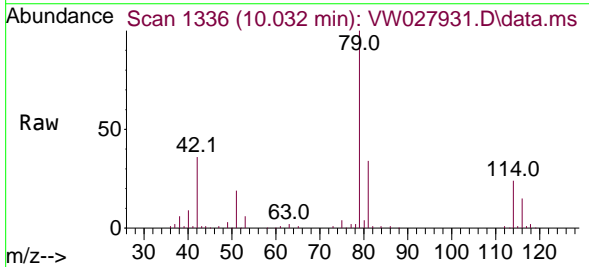
Instrument : MSVOA_W
 ClientSampleId :

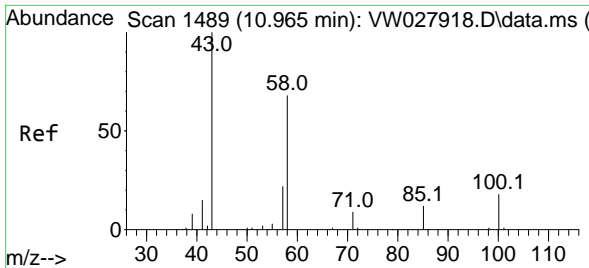
Tgt Ion: 63 Resp: 12994
 Ion Ratio Lower Upper
 63 100
 112 0.0 4.2 6.2#



#39
 cis-1,3-Dichloropropene
 Concen: 0.419 ug/L
 RT: 10.032 min Scan# 1336
 Delta R.T. -0.037 min
 Lab File: VW027931.D
 Acq: 02 Feb 2024 15:44

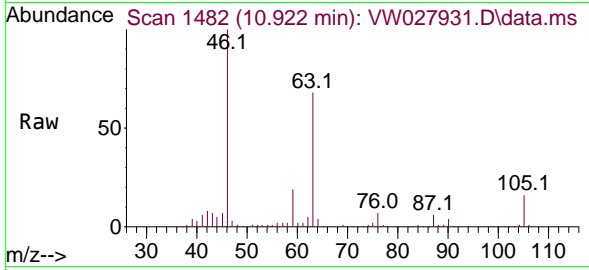
Tgt Ion: 75 Resp: 3355
 Ion Ratio Lower Upper
 75 100
 77 49.1 21.7 40.3#





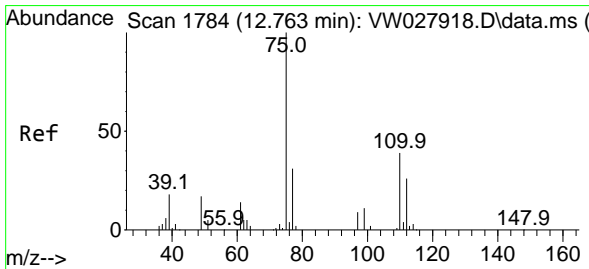
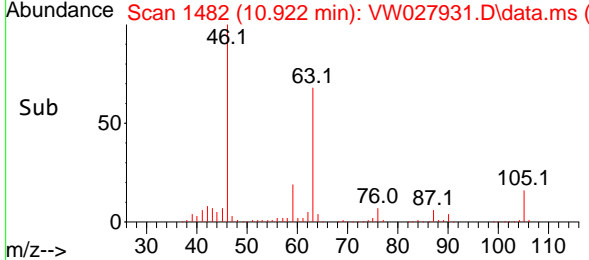
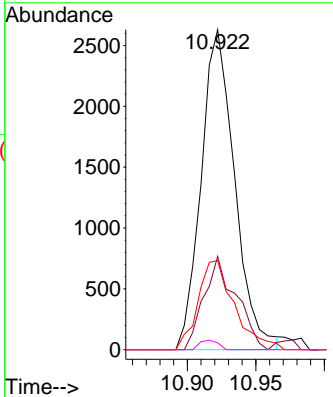
#48
 2-Hexanone
 Concen: 3.045 ug/L
 RT: 10.922 min Scan# 1482
 Delta R.T. -0.043 min
 Lab File: VW027931.D
 Acq: 02 Feb 2024 15:44

Instrument : MSVOA_W
 ClientSampleId :

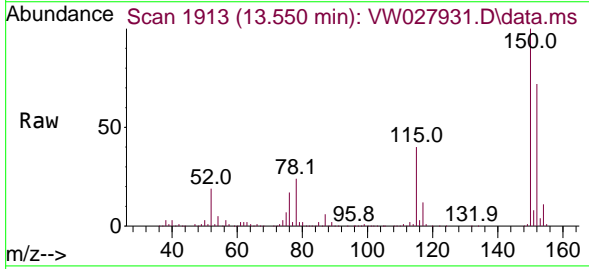


Tgt Ion: 43 Resp: 4474

Ion	Ratio	Lower	Upper
43	100		
58	27.9	49.3	73.9#
57	30.2	17.0	25.4#
100	1.7	12.9	19.3#



#61
 1,2,3-Trichloropropane
 Concen: 6.695 ug/L
 RT: 13.550 min Scan# 1913
 Delta R.T. 0.786 min
 Lab File: VW027931.D
 Acq: 02 Feb 2024 15:44



Tgt Ion: 75 Resp: 19569

Ion	Ratio	Lower	Upper
75	100		
77	32.6	26.1	39.1
110	2.7	33.1	49.7#

