

Data Path : Z:\voasrv\HPCHEM1\MSVOA_W\Data\VW020524\
 Data File : VW027960.D
 Acq On : 05 Feb 2024 17:43
 Operator : SY/MD
 Sample : P1352-08
 Misc : 5.60g/10mL/MSVOA_W/SOIL/A
 ALS Vial : 1 Sample Multiplier: 1

Instrument :
 MSVOA_W
 ClientSampleId :
 C0FN9

Integration Parameters: LSCINT.P

Integrator: RTE
 Smoothing : OFF
 Sampling : 1
 Start Thrs : 0.2
 Stop Thrs : 0

Filtering: 5
 Min Area: 0 % of largest Peak
 Max Peaks: 100
 Peak Location: TOP

If leading or trailing edge < 100 prefer < Baseline drop else tangent >
 Peak separation: 5

Method : Z:\voasrv\HPCHEM1\MSVOA_W\Method\SFAMWLM020524SMA.M
 Title : SFAM01.0

Signal : TIC: VW027960.D\data.ms

peak #	R.T. min	first scan	max scan	last scan	PK TY	peak height	corr. area	corr. % max.	% of total
1	2.363	71	78	98	rBV	53544	156440	10.60%	1.448%
2	2.893	157	165	184	rBV	59696	175889	11.91%	1.628%
3	3.058	190	192	193	rBV2	521	295	0.02%	0.003%
4	3.679	288	294	296	rBV3	340	511	0.03%	0.005%
5	3.698	296	297	301	rBV2	175	166	0.01%	0.002%
6	3.844	319	321	324	rVB	186	167	0.01%	0.002%
7	4.027	336	351	378	rBV	133631	458639	31.07%	4.246%
8	4.405	410	413	414	rBV	260	277	0.02%	0.003%
9	4.448	414	420	426	rVV4	499	1804	0.12%	0.017%
10	4.509	429	430	433	rVV	313	301	0.02%	0.003%
11	4.734	464	467	469	rVB2	152	191	0.01%	0.002%
12	4.783	472	475	478	rBV2	238	252	0.02%	0.002%
13	4.923	486	498	517	rBV3	18738	72643	4.92%	0.672%
14	5.051	517	519	522	rVB2	520	425	0.03%	0.004%
15	5.173	535	539	540	rBV2	207	205	0.01%	0.002%
16	5.935	656	664	674	rVV3	2740	7955	0.54%	0.074%
17	6.277	718	720	722	rBV2	151	185	0.01%	0.002%
18	6.459	749	750	754	rBV	148	180	0.01%	0.002%
19	7.002	837	839	842	rVB2	163	178	0.01%	0.002%
20	7.081	842	852	859	rBV	33739	96860	6.56%	0.897%
21	7.453	910	913	915	rBV2	194	244	0.02%	0.002%
22	7.484	915	918	923	rBV2	178	280	0.02%	0.003%
23	7.648	933	945	957	rBV	268934	656912	44.50%	6.081%
24	8.148	1022	1027	1028	rBV2	143	189	0.01%	0.002%
25	8.270	1035	1047	1065	rBV2	500851	1476262	100.00%	13.666%
26	8.392	1065	1067	1073	rVB3	825	1257	0.09%	0.012%
27	8.630	1101	1106	1112	rVB3	314	692	0.05%	0.006%
28	8.691	1112	1116	1118	rBV2	379	603	0.04%	0.006%
29	8.746	1122	1125	1131	rBV2	173	311	0.02%	0.003%
30	8.843	1131	1141	1152	rBV	558638	1140742	77.27%	10.560%
31	9.075	1175	1179	1185	rBV3	1657	3000	0.20%	0.028%
32	9.117	1185	1186	1190	rVB2	256	309	0.02%	0.003%
33	9.270	1202	1211	1221	rBV	325601	665401	45.07%	6.160%
34	9.337	1221	1222	1228	rVV4	1331	2116	0.14%	0.020%
35	9.404	1232	1233	1236	rVB	274	174	0.01%	0.002%
36	9.666	1267	1276	1280	rBV2	968	1751	0.12%	0.016%

Data Path : Z:\voasrv\HPCHEM1\MSVOA_W\Data\VW020524\
 Data File : VW027960.D
 Acq On : 05 Feb 2024 17:43
 Operator : SY/MD
 Sample : P1352-08
 Misc : 5.60g/10mL/MSVOA_W/SOIL/A
 ALS Vial : 1 Sample Multiplier: 1

Instrument :
 MSVOA_W
 ClientSampleId :
 C0FN9

Integration Parameters: LSCINT.P

Integrator: RTE
 Smoothing : OFF
 Sampling : 1
 Start Thrs : 0.2
 Stop Thrs : 0

Filtering: 5
 Min Area: 0 % of largest Peak
 Max Peaks: 100
 Peak Location: TOP

If leading or trailing edge < 100 prefer < Baseline drop else tangent >
 Peak separation: 5

Method : Z:\voasrv\HPCHEM1\MSVOA_W\Method\SFAMWLM020524SMA.M
 Title : SFAM01.0

37	10.032	1328	1336	1346	rBV	185466	329771	22.34%	3.053%
38	10.123	1348	1351	1353	rBV3	310	463	0.03%	0.004%
39	10.319	1375	1383	1391	rBV	755986	1320207	89.43%	12.221%
40	10.471	1406	1408	1411	rBV3	370	469	0.03%	0.004%
41	10.575	1418	1425	1436	rBV	109339	188963	12.80%	1.749%
42	10.703	1439	1446	1452	rVB	13328	24353	1.65%	0.225%
43	10.806	1461	1463	1464	rBV	271	176	0.01%	0.002%
44	10.843	1467	1469	1475	rVB3	309	364	0.02%	0.003%
45	10.922	1475	1482	1496	rBV	154870	257074	17.41%	2.380%
46	11.062	1500	1505	1510	rVB4	3000	5329	0.36%	0.049%
47	11.160	1518	1521	1522	rBV2	170	208	0.01%	0.002%
48	11.178	1522	1524	1527	rVB2	519	484	0.03%	0.004%
49	11.239	1532	1534	1538	rBV2	242	253	0.02%	0.002%
50	11.331	1542	1549	1551	rVB2	318	439	0.03%	0.004%
51	11.361	1551	1554	1556	rBV	173	180	0.01%	0.002%
52	11.391	1556	1559	1560	rBV2	291	252	0.02%	0.002%
53	11.428	1563	1565	1568	rVB3	371	418	0.03%	0.004%
54	11.568	1585	1588	1590	rBV	281	246	0.02%	0.002%
55	11.629	1590	1598	1607	rBV	721889	1249601	84.65%	11.567%
56	11.727	1612	1614	1620	rVB3	1266	1862	0.13%	0.017%
57	11.776	1620	1622	1624	rBV2	274	201	0.01%	0.002%
58	11.837	1626	1632	1638	rVB	2272	3742	0.25%	0.035%
59	11.965	1649	1653	1654	rBV2	168	258	0.02%	0.002%
60	12.074	1670	1671	1674	rBV2	189	175	0.01%	0.002%
61	12.184	1681	1689	1690	rBV5	1764	4143	0.28%	0.038%
62	12.464	1729	1735	1744	rVB2	9189	15736	1.07%	0.146%
63	12.532	1744	1746	1747	rBV	195	172	0.01%	0.002%
64	12.599	1750	1757	1764	rBV	10965	18833	1.28%	0.174%
65	12.690	1764	1772	1780	rBV	257016	433413	29.36%	4.012%
66	12.757	1781	1783	1784	rBV2	388	260	0.02%	0.002%
67	12.885	1801	1804	1805	rBV2	563	526	0.04%	0.005%
68	12.934	1809	1812	1820	rVB3	1194	1987	0.13%	0.018%
69	12.995	1820	1822	1823	rBV	301	289	0.02%	0.003%
70	13.013	1823	1825	1827	rBV3	582	648	0.04%	0.006%
71	13.068	1832	1834	1836	rBV2	365	417	0.03%	0.004%
72	13.117	1840	1842	1843	rVV2	325	240	0.02%	0.002%
73	13.153	1846	1848	1849	rVV2	424	401	0.03%	0.004%
74	13.190	1849	1854	1857	rVV4	933	1989	0.13%	0.018%
75	13.233	1857	1861	1862	rVV4	1285	1853	0.13%	0.017%
76	13.287	1866	1870	1876	rVB2	3639	5728	0.39%	0.053%

Data Path : Z:\voasrv\HPCHEM1\MSVOA_W\Data\VW020524\
 Data File : VW027960.D
 Acq On : 05 Feb 2024 17:43
 Operator : SY/MD
 Sample : P1352-08
 Misc : 5.60g/10mL/MSVOA_W/SOIL/A
 ALS Vial : 1 Sample Multiplier: 1

Instrument :
 MSVOA_W
 ClientSampleId :
 C0FN9

Integration Parameters: LSCINT.P

Integrator: RTE
 Smoothing : OFF Filtering: 5
 Sampling : 1 Min Area: 0 % of largest Peak
 Start Thrs: 0.2 Max Peaks: 100
 Stop Thrs : 0 Peak Location: TOP

If leading or trailing edge < 100 prefer < Baseline drop else tangent >
 Peak separation: 5

Method : Z:\voasrv\HPCHEM1\MSVOA_W\Method\SFAMWLM020524SMA.M
 Title : SFAM01.0

77	13.403	1883	1889	1892	rVB4	1086	1761	0.12%	0.016%
78	13.434	1892	1894	1895	rBV	257	174	0.01%	0.002%
79	13.464	1895	1899	1901	rBV4	1804	2201	0.15%	0.020%
80	13.489	1901	1903	1904	rVV2	1004	1051	0.07%	0.010%
81	13.556	1906	1914	1925	rVV	656252	1050358	71.15%	9.723%
82	13.647	1925	1929	1934	rVB5	2899	5099	0.35%	0.047%
83	13.751	1942	1946	1949	rBV5	1098	1683	0.11%	0.016%
84	13.848	1955	1962	1975	rVB	550677	874443	59.23%	8.095%
85	13.946	1975	1978	1983	rVB6	1396	1994	0.14%	0.018%
86	14.013	1983	1989	1990	rBV5	979	1791	0.12%	0.017%
87	14.062	1992	1997	2003	rVB	8777	13893	0.94%	0.129%
88	14.196	2015	2019	2024	rVB5	1494	2495	0.17%	0.023%
89	14.421	2052	2056	2059	rBV6	2010	3984	0.27%	0.037%
90	14.714	2101	2104	2112	rVB8	6016	10519	0.71%	0.097%
91	15.086	2163	2165	2169	rBV5	690	790	0.05%	0.007%
92	15.427	2215	2221	2226	rBV	13592	21912	1.48%	0.203%
93	15.482	2226	2230	2236	rVV	3234	4848	0.33%	0.045%
94	15.555	2240	2242	2245	rVB4	921	732	0.05%	0.007%
95	15.671	2258	2261	2262	rBV2	1105	1084	0.07%	0.010%
96	15.836	2285	2288	2292	rBV4	1291	2084	0.14%	0.019%
97	16.031	2319	2320	2322	rBV2	445	406	0.03%	0.004%
98	16.159	2334	2341	2344	rBV7	1497	2829	0.19%	0.026%
99	16.427	2383	2385	2386	rBV	390	216	0.01%	0.002%
100	16.647	2419	2421	2424	rVB3	534	503	0.03%	0.005%

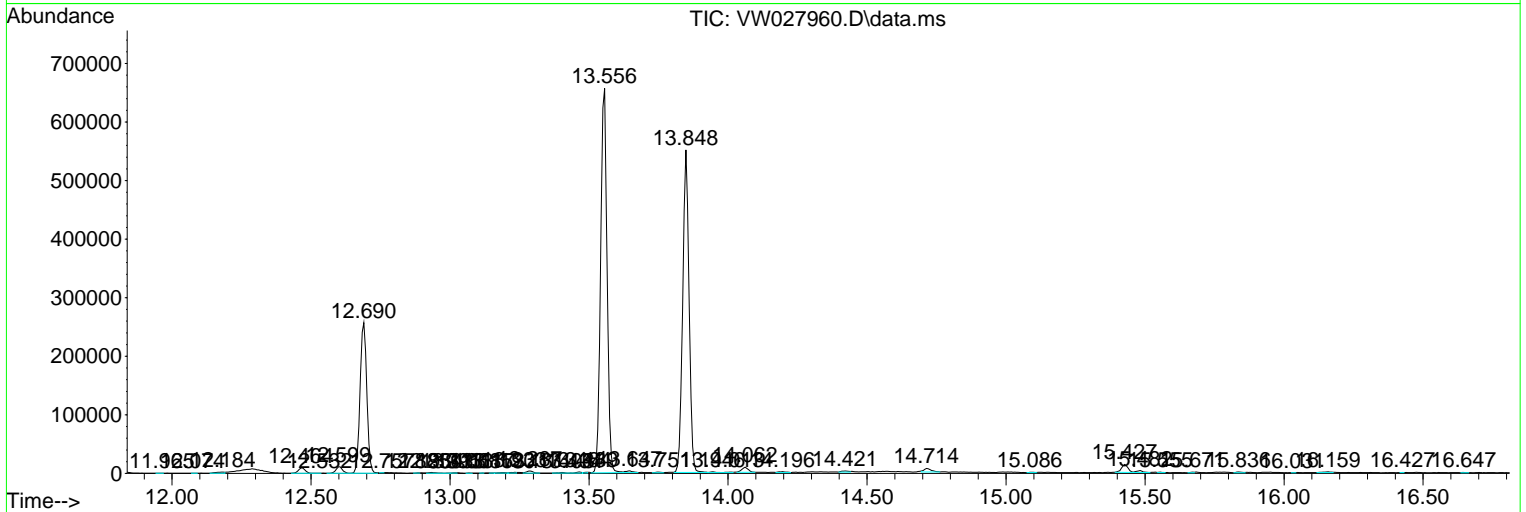
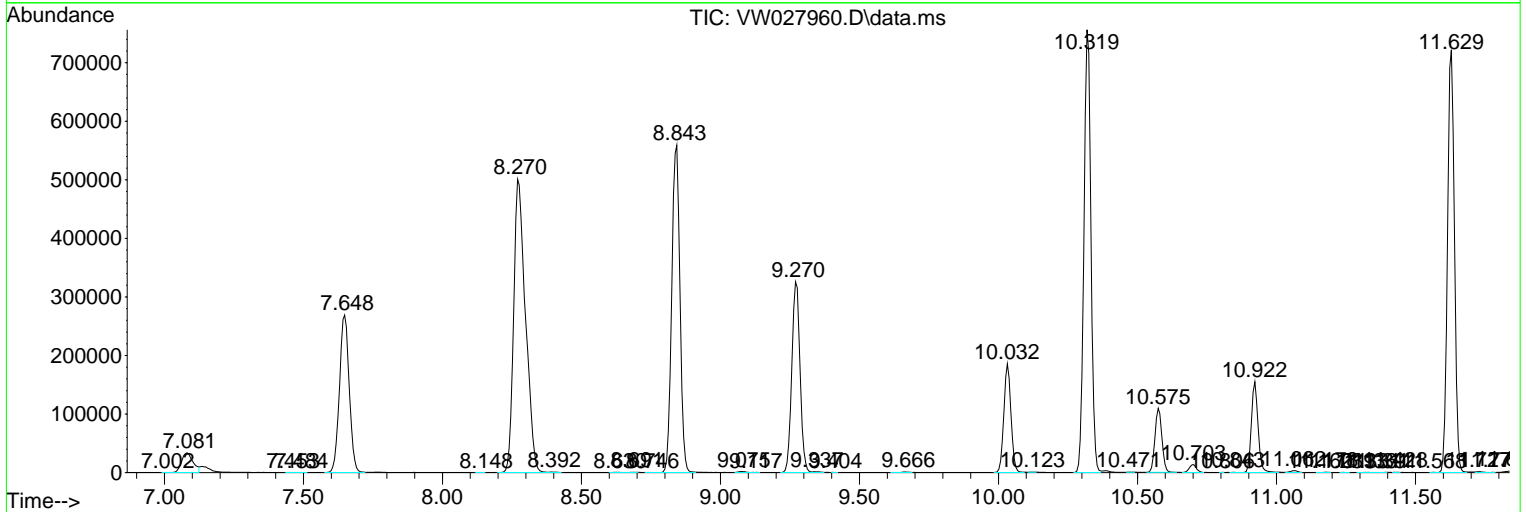
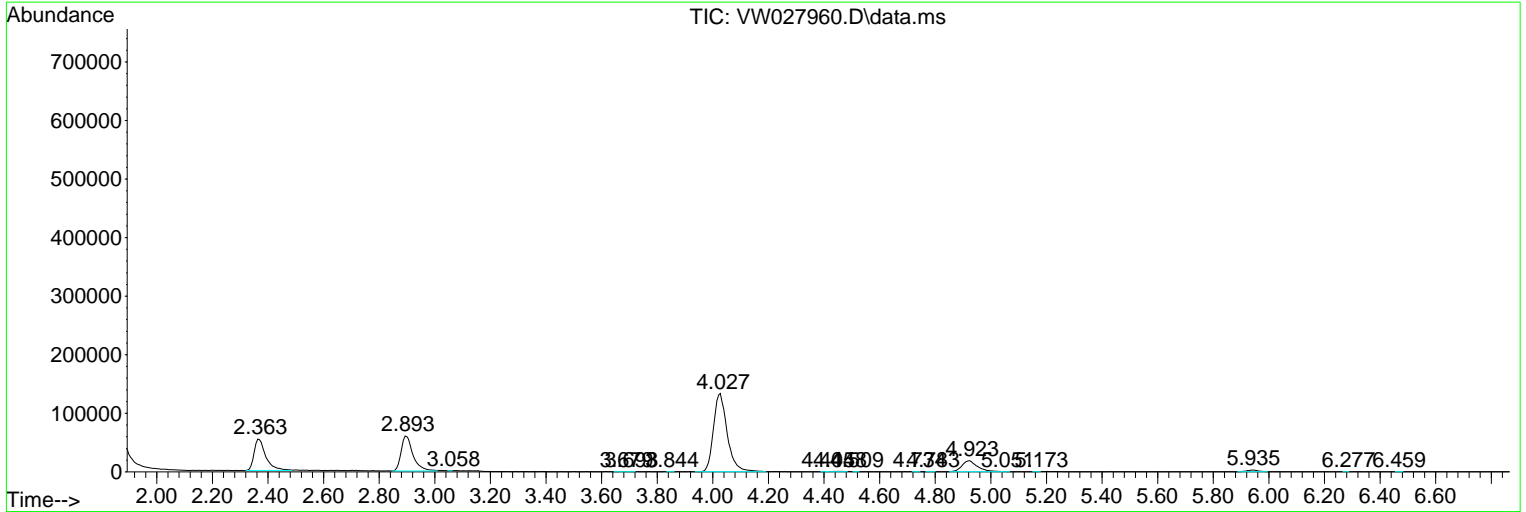
Sum of corrected areas: 10802779

Data Path : Z:\voasrv\HPCHEM1\MSVOA_W\Data\VW020524\
 Data File : VW027960.D
 Acq On : 05 Feb 2024 17:43
 Operator : SY/MD
 Sample : P1352-08
 Misc : 5.60g/10mL/MSVOA_W/SOIL/A
 ALS Vial : 1 Sample Multiplier: 1

Instrument :
 MSVOA_W
 ClientSampleId :
 C0FN9

Quant Method : Z:\voasrv\HPCHEM1\MSVOA_W\Method\SFAMWLM020524SMA.M
 Quant Title : SFAM01.0

TIC Library : C:\Database\NIST20.L
 TIC Integration Parameters: LSCINT.P



Library Search Compound Report

Data Path : Z:\voasrv\HPCHEM1\MSVOA_W\Data\VW020524\
Data File : VW027960.D
Acq On : 05 Feb 2024 17:43
Operator : SY/MD
Sample : P1352-08
Misc : 5.60g/10mL/MSVOA_W/SOIL/A
ALS Vial : 1 Sample Multiplier: 1

Instrument :
MSVOA_W
ClientSampleId :
C0FN9

Quant Method : Z:\voasrv\HPCHEM1\MSVOA_W\Method\SFAMWLM020524SMA.M
Quant Title : SFAM01.0

TIC Library : C:\Database\NIST20.L
TIC Integration Parameters: LSCINT.P

No Library Search Compounds Detected

Data Path : Z:\voasrv\HPCHEM1\MSVOA_W\Data\VW020524\
Data File : VW027960.D
Acq On : 05 Feb 2024 17:43
Operator : SY/MD
Sample : P1352-08
Misc : 5.60g/10mL/MSVOA_W/SOIL/A
ALS Vial : 1 Sample Multiplier: 1

Instrument :
MSVOA_W
ClientSampleId :
C0FN9

Quant Method : Z:\voasrv\HPCHEM1\MSVOA_W\Method\SFAMWLM020524SMA.M
Quant Title : SFAM01.0

TIC Library : C:\Database\NIST20.L
TIC Integration Parameters: LSCINT.P

TIC Top Hit name	RT	EstConc	Units	Response	#	RT	Resp	Conc
------------------	----	---------	-------	----------	---	----	------	------
