

Data Path : Z:\VOASRV\HPCHEM1\MSVOA W\DATA\VW021020\
 Data File : VW014932.D
 Acq On : 10 Feb 2020 10:14
 Operator : SY/VA
 Sample : VSTDCCC025
 Misc : 5.00G/10ML/MSVOA W/SOIL
 ALS Vial : 1 Sample Multiplier: 1

Instrument :
 MSVOA_W
 ClientSampled :

Quant Time: Feb 11 00:29:17 2020
 Quant Method : Z:\VOASRV\HPCHEM1\MSVOA_W\METHOD\SOM2WLM020520S.M
 Quant Title : VOC Analysis
 QLast Update : Mon Feb 10 16:01:05 2020
 Response via : Initial Calibration

Internal Standards	R.T.	QIon	Response	Conc	Units	Dev(Min)
1) 1,4-Difluorobenzene	8.84	114	850601	25.00	ug/L	0.00
28) Chlorobenzene-d5	11.63	117	757287	25.00	ug/L	0.00
60) 1,4-Dichlorobenzene-d4	13.55	152	343462	25.00	ug/L	0.00

System Monitoring Compounds

4) Vinyl Chloride-d3	2.35	65	370003	26.28	ug/L	0.00
Spiked Amount	25.000	Range	30 - 150	Recovery	=	105.12%
7) Chloroethane-d5	2.89	69	301022	26.70	ug/L	0.00
Spiked Amount	25.000	Range	30 - 150	Recovery	=	106.80%
10) 1,1-Dichloroethene-d2	4.02	63	709489	27.58	ug/L	0.00
Spiked Amount	25.000	Range	45 - 110	Recovery	=	110.32%#
20) 2-Butanone-d5	7.07	46	183846	46.52	ug/L	0.00
Spiked Amount	50.000	Range	20 - 135	Recovery	=	93.04%
24) Chloroform-d	7.65	84	661405	27.39	ug/L	0.00
Spiked Amount	25.000	Range	40 - 150	Recovery	=	109.56%
26) 1,2-Dichloroethane-d4	8.30	65	355362	26.59	ug/L	0.00
Spiked Amount	25.000	Range	70 - 130	Recovery	=	106.36%
29) Benzene-d6	8.27	84	1303850	26.77	ug/L	0.00
Spiked Amount	25.000	Range	20 - 135	Recovery	=	107.08%
33) 1,2-Dichloropropane-d6	9.27	67	427355	26.93	ug/L	0.00
Spiked Amount	25.000	Range	70 - 120	Recovery	=	107.72%
37) Toluene-d8	10.32	98	1137265	26.54	ug/L	0.00
Spiked Amount	25.000	Range	30 - 130	Recovery	=	106.16%
38) trans-1,3-Dichloropropene-	10.57	79	159819	25.50	ug/L	0.00
Spiked Amount	25.000	Range	30 - 135	Recovery	=	102.00%
39) 2-Hexanone-d5	10.92	63	129206	44.67	ug/L	0.00
Spiked Amount	50.000	Range	20 - 135	Recovery	=	89.34%
48) 1,1,2,2-Tetrachloroethane-	12.69	84	283054	23.69	ug/L	0.00
Spiked Amount	25.000	Range	45 - 120	Recovery	=	94.76%
61) 1,2-Dichlorobenzene-d4	13.85	152	322568	24.22	ug/L	0.00
Spiked Amount	25.000	Range	75 - 120	Recovery	=	96.88%

Target Compounds

Target Compounds	R.T.	QIon	Response	Conc	Units	Ovalue
2) Dichlorodifluoromethane	2.01	85	213957	24.467	ug/L	89
3) Chloromethane	2.21	50	341531	25.774	ug/L	99
5) Vinyl chloride	2.37	62	473905	27.391	ug/L	98
6) Bromomethane	2.78	94	217037	25.087	ug/L	98
8) Chloroethane	2.93	64	256536	27.100	ug/L	100
9) Trichlorofluoromethane	3.26	101	225309	32.215	ug/L	97
11) 1,1,2-Trichloro-1,2,2-trif	4.06	101	335179	27.149	ug/L	96
12) 1,1-Dichloroethene	4.04	96	313950	26.019	ug/L	88
13) Acetone	4.12	43	179740	44.063	ug/L	99
14) Carbon disulfide	4.38	76	992988	27.409	ug/L	99
15) Methyl Acetate	4.67	43	163672	24.383	ug/L	97
16) Methylene chloride	4.92	84	342128	22.078	ug/L	91
17) Methyl tert-butyl Ether	5.43	73	376555	23.888	ug/L	97
18) trans-1,2-Dichloroethene	5.42	96	319646	26.146	ug/L	87
19) 1,1-Dichloroethane	6.21	63	703851	28.418	ug/L	98
21) 2-Butanone	7.16	43	219399	45.938	ug/L	99
22) cis-1,2-Dichloroethene	7.16	96	339836	25.700	ug/L	93

Data Path : Z:\VOASRV\HPCHEM1\MSVOA W\DATA\VW021020\
 Data File : VW014932.D
 Acq On : 10 Feb 2020 10:14
 Operator : SY/VA
 Sample : VSTDCCC025
 Misc : 5.00G/10ML/MSVOA W/SOIL
 ALS Vial : 1 Sample Multiplier: 1

Instrument :
 MSVOA_W
 ClientSampleId :

Quant Time: Feb 11 00:29:17 2020
 Quant Method : Z:\VOASRV\HPCHEM1\MSVOA_W\METHOD\SOM2WLM020520S.M
 Quant Title : VOC Analysis
 QLast Update : Mon Feb 10 16:01:05 2020
 Response via : Initial Calibration

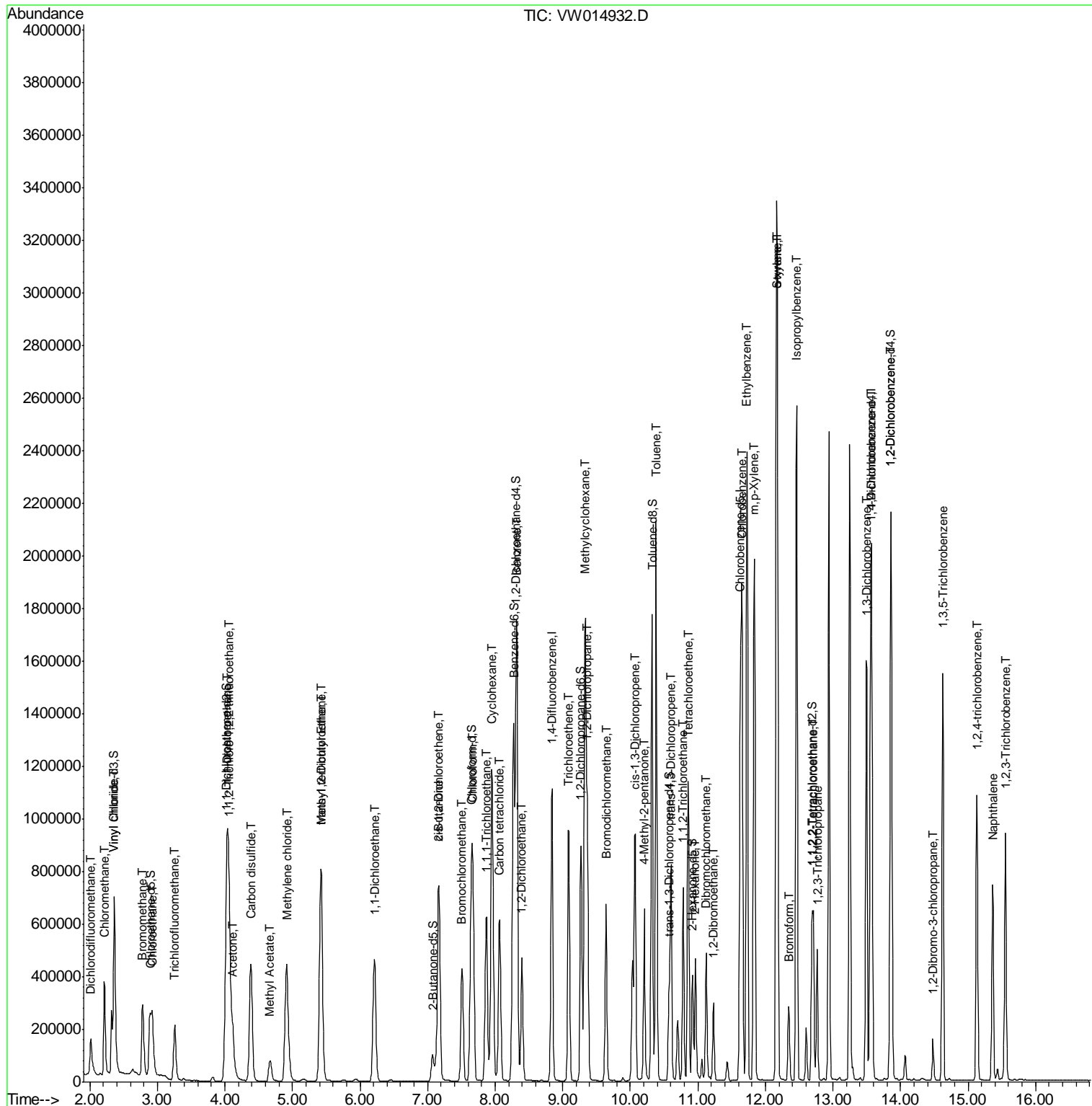
Internal Standards	R.T.	QIon	Response	Conc	Units	Dev(Min)
23) Bromochloromethane	7.51	128	128254	23.640	ug/L	84
25) Chloroform	7.67	83	631455	27.755	ug/L	99
27) 1,2-Dichloroethane	8.40	62	419910	26.770	ug/L	99
30) Cyclohexane	7.95	56	671828	29.774	ug/L	95
31) 1,1,1-Trichloroethane	7.87	97	497374	28.804	ug/L	97
32) Carbon tetrachloride	8.07	117	443049	28.544	ug/L	99
34) Benzene	8.32	78	1461641	28.068	ug/L	100
35) Trichloroethene	9.09	95	344589	26.695	ug/L	97
36) Methylcyclohexane	9.34	83	640137	28.469	ug/L	95
40) 1,2-Dichloropropane	9.37	63	391850	28.119	ug/L	99
41) Bromodichloromethane	9.64	83	444287	27.818	ug/L	99
42) cis-1,3-Dichloropropene	10.07	75	536077	27.091	ug/L	100
43) 4-Methyl-2-pentanone	10.21	43	440210	48.174	ug/L	96
44) Toluene	10.38	91	1482228	28.038	ug/L	97
45) trans-1,3-Dichloropropene	10.60	75	428430	26.886	ug/L	100
46) 1,1,2-Trichloroethane	10.78	97	225517	24.583	ug/L	98
47) Tetrachloroethene	10.86	164	237011	24.989	ug/L	94
49) 2-Hexanone	10.96	43	311959	48.603	ug/L	95
50) Dibromochloromethane	11.13	129	246702	25.022	ug/L	99
51) 1,2-Dibromoethane	11.23	107	199351	23.355	ug/L	100
52) Chlorobenzene	11.65	112	835257	25.842	ug/L	95
53) Ethylbenzene	11.72	91	1641096	28.376	ug/L	96
54) m,p-Xylene	11.83	106	579841	27.448	ug/L	94
55) o-xylene	12.16	106	545956	27.155	ug/L	100
56) Styrene	12.18	104	941594	27.710	ug/L	96
57) Isopropylbenzene	12.46	105	1529937	28.334	ug/L	99
58) 1,1,2,2-Tetrachloroethane	12.71	83	274225	23.948	ug/L	97
59) 1,2,3-Trichloropropane	12.77	75	205162	23.815	ug/L	99
62) Bromoform	12.35	173	119406	22.806	ug/L	100
63) 1,3-Dichlorobenzene	13.50	146	600453	25.881	ug/L	96
64) 1,4-Dichlorobenzene	13.58	146	597028	25.546	ug/L	97
65) 1,2-Dichlorobenzene	13.86	146	539322	25.415	ug/L	97
66) 1,2-Dibromo-3-chloropropan	14.48	75	41643	23.015	ug/L #	84
67) 1,3,5-Trichlorobenzene	14.63	180	423382	25.480	ug/L	99
68) 1,2,4-trichlorobenzene	15.13	180	314482	23.954	ug/L	98
69) Naphthalene	15.36	128	575684	22.292	ug/L	100
70) 1,2,3-Trichlorobenzene	15.55	180	286853	23.663	ug/L	99

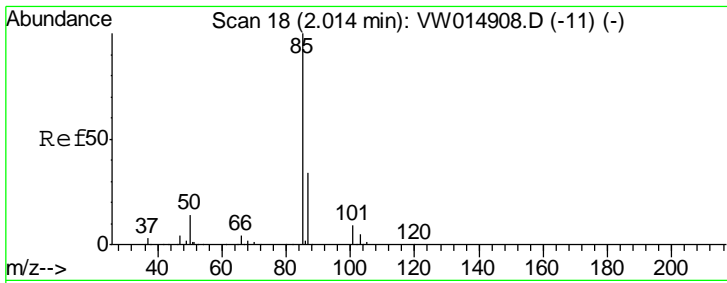
(#) = qualifier out of range (m) = manual integration (+) = signals summed

Data Path : Z:\VOASRV\HPCHEM1\MSVOA W\DATA\VW021020\
 Data File : VW014932.D
 Acq On : 10 Feb 2020 10:14
 Operator : SY/VA
 Sample : VSTDCCC025
 Misc : 5.00G/10ML/MSVOA W/SOIL
 ALS Vial : 1 Sample Multiplier: 1

Instrument :
 MSVOA_W
 Client Sampled :

Quant Time: Feb 11 00:29:17 2020
 Quant Method : Z:\VOASRV\HPCHEM1\MSVOA_W\METHOD\SOM2WLM020520S.M
 Quant Title : VOC Analysis
 QLast Update : Mon Feb 10 16:01:05 2020
 Response via : Initial Calibration

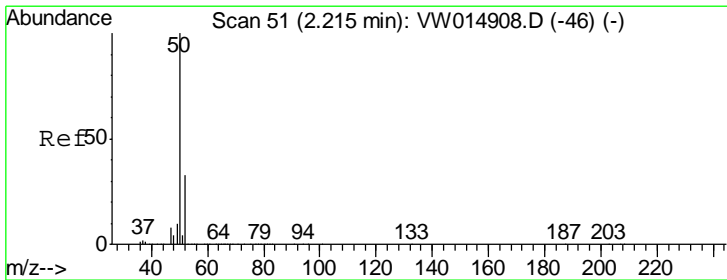
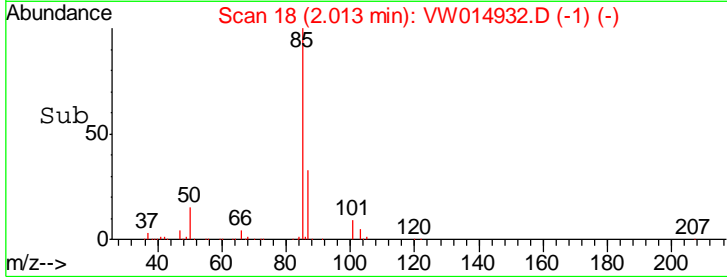
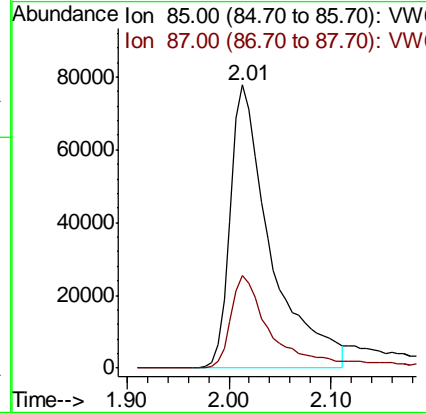
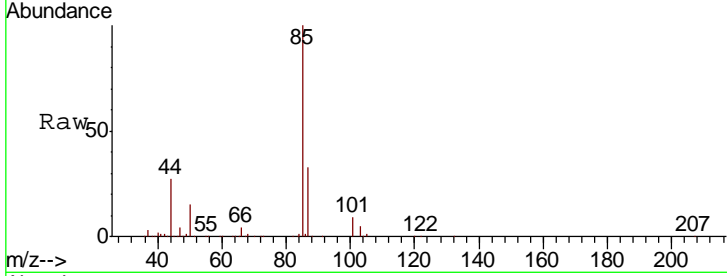




#2
 Dichlorodifluoromethane
 Concen: 24.467 ug/L
 RT: 2.01 min Scan# 18
 Delta R.T. -0.00 min
 Lab File: VW014932.D
 Acq: 10 Feb 2020 10:14

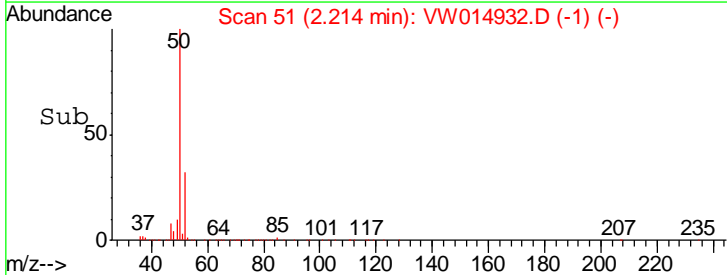
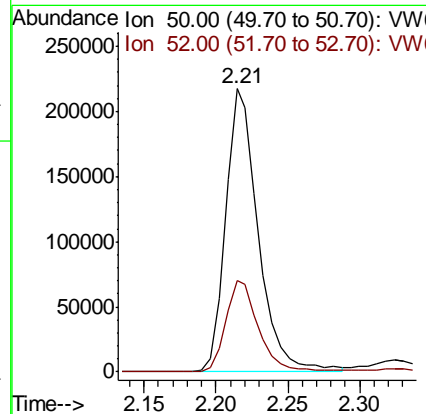
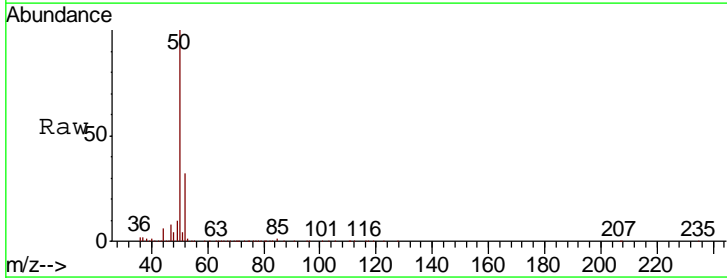
Instrument :
 MSVOA_W
 ClientSampled :

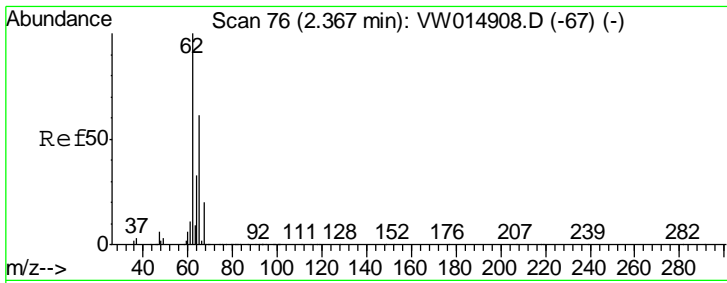
Tgt Ion: 85 Resp: 213957
 Ion Ratio Lower Upper
 85 100
 87 31.3 18.1 33.7



#3
 Chloromethane
 Concen: 25.774 ug/L
 RT: 2.21 min Scan# 51
 Delta R.T. -0.00 min
 Lab File: VW014932.D
 Acq: 10 Feb 2020 10:14

Tgt Ion: 50 Resp: 341531
 Ion Ratio Lower Upper
 50 100
 52 32.4 22.1 41.1

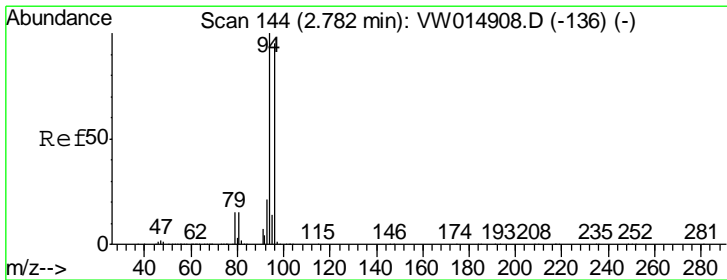
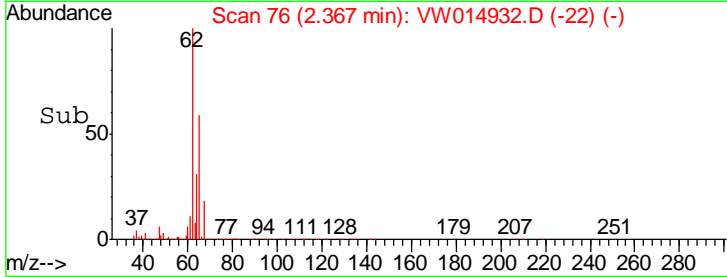
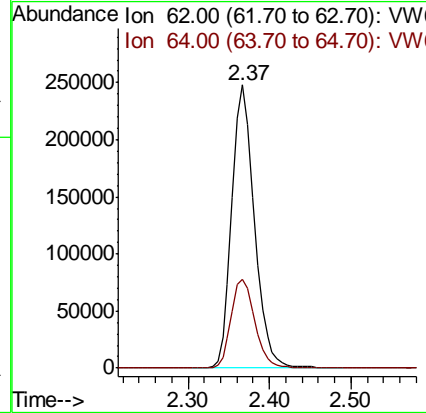
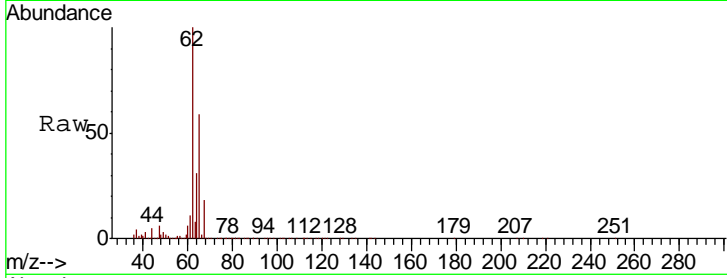




#5
 Vinyl chloride
 Concen: 27.391 ug/L
 RT: 2.37 min Scan# 76
 Delta R.T. -0.00 min
 Lab File: VW014932.D
 Acq: 10 Feb 2020 10:14

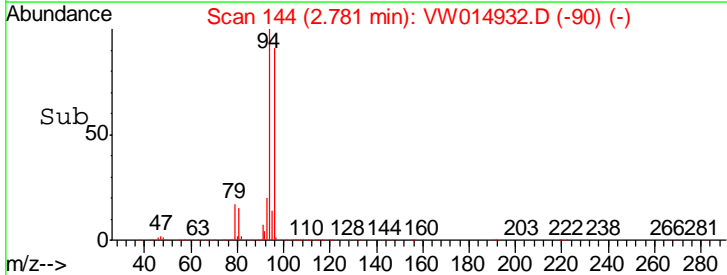
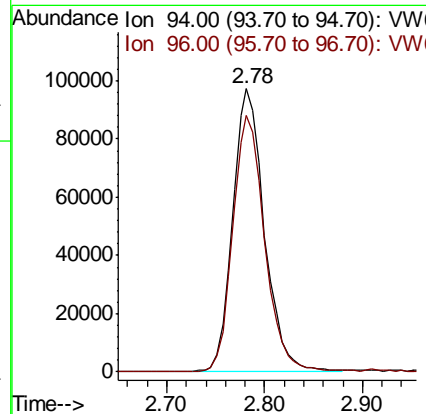
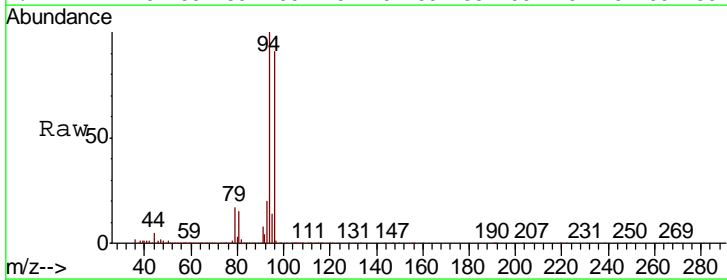
Instrument :
 MSVOA_W
 ClientSampled :

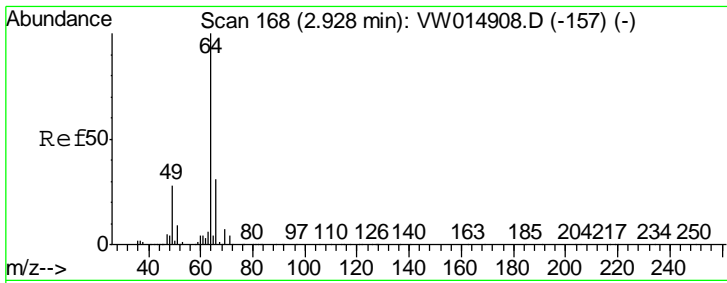
Tgt Ion	Resp	Lower	Upper
62	100		
64	31.2	22.5	41.9



#6
 Bromomethane
 Concen: 25.087 ug/L
 RT: 2.78 min Scan# 144
 Delta R.T. -0.00 min
 Lab File: VW014932.D
 Acq: 10 Feb 2020 10:14

Tgt Ion	Resp	Lower	Upper
94	100		
96	91.8	9.4	178.0

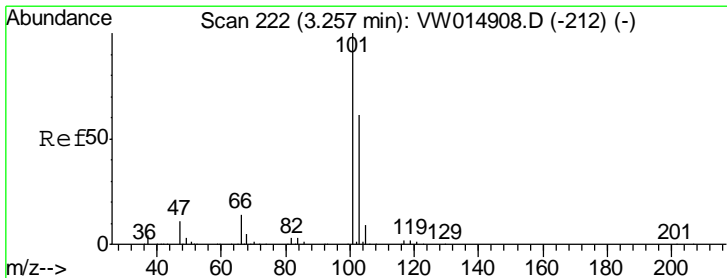
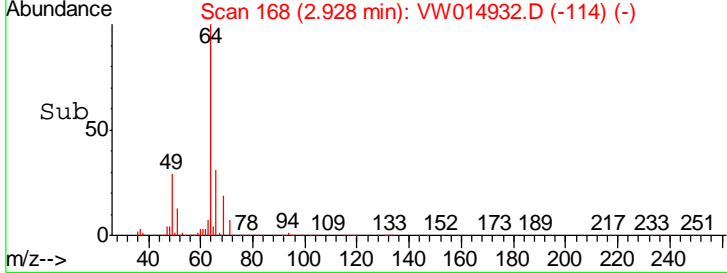
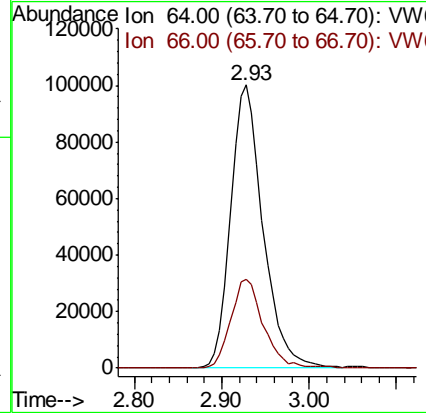
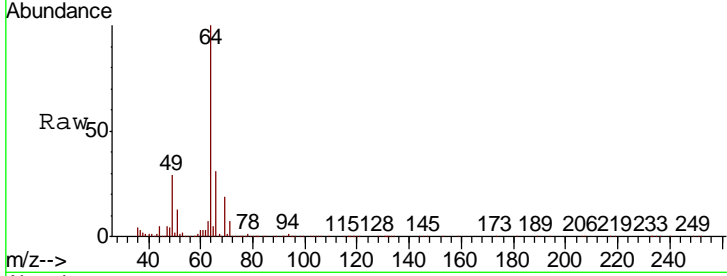




#8
 Chloroethane
 Concen: 27.100 ug/L
 RT: 2.93 min Scan# 168
 Delta R.T. -0.00 min
 Lab File: VW014932.D
 Acq: 10 Feb 2020 10:14

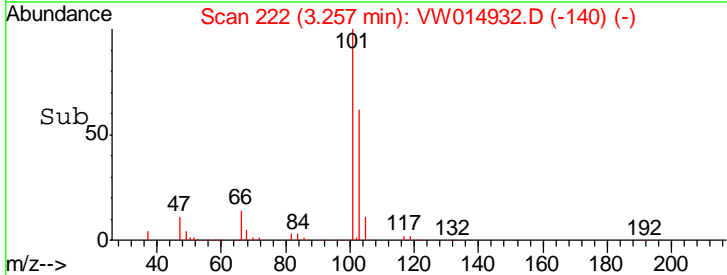
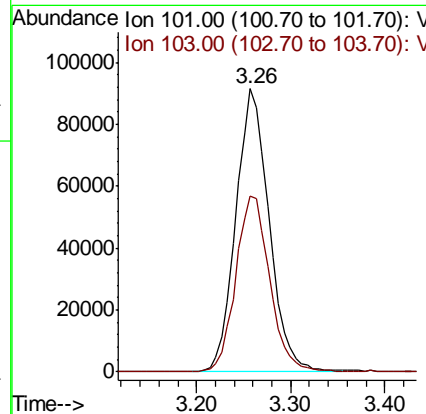
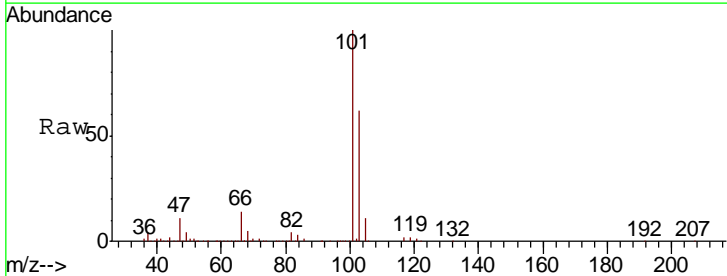
Instrument :
 MSVOA_W
 ClientSampled :

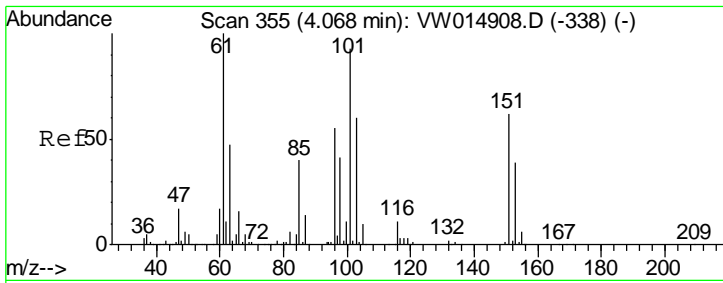
Tgt Ion	Resp	Lower	Upper
64	100		
66	31.4	21.9	40.7



#9
 Trichlorofluoromethane
 Concen: 32.215 ug/L
 RT: 3.26 min Scan# 222
 Delta R.T. -0.00 min
 Lab File: VW014932.D
 Acq: 10 Feb 2020 10:14

Tgt Ion	Resp	Lower	Upper
101	100		
103	63.4	45.8	85.0

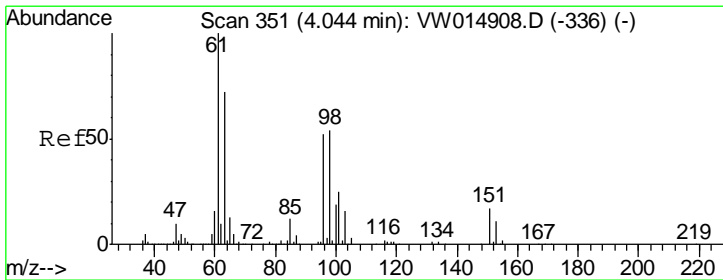
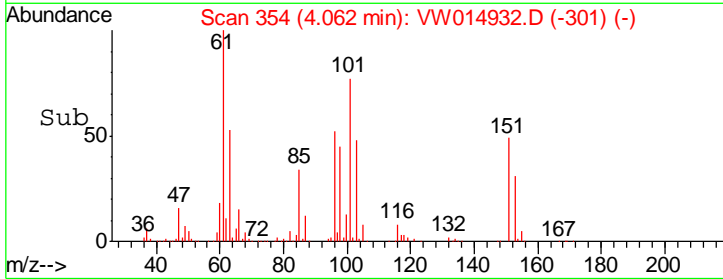
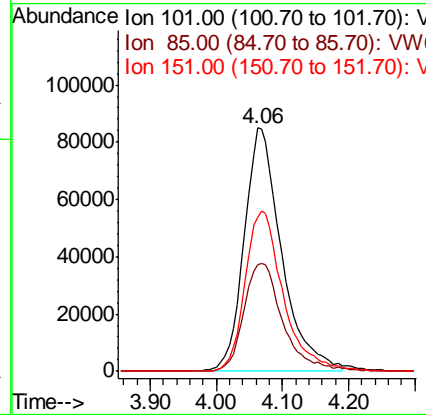
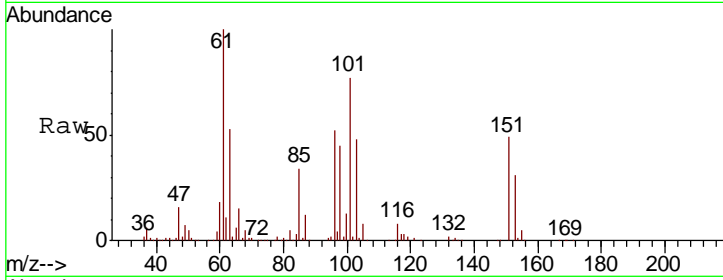




#11
 1,1,2-Trichloro-1,2,2-trifluoroethane
 Concen: 27.149 ug/L
 RT: 4.06 min Scan# 354
 Delta R.T. -0.01 min
 Lab File: VW014932.D
 Acq: 10 Feb 2020 10:14

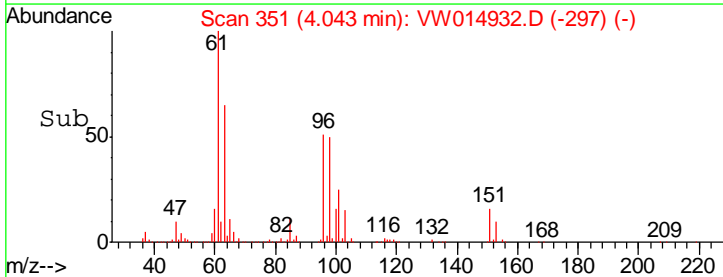
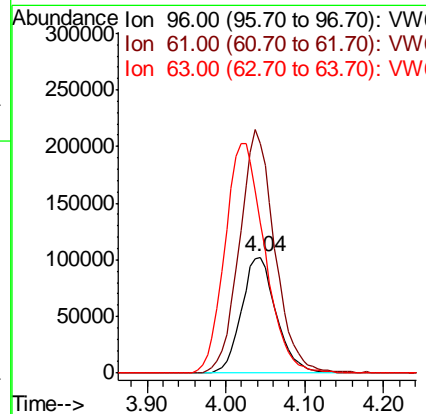
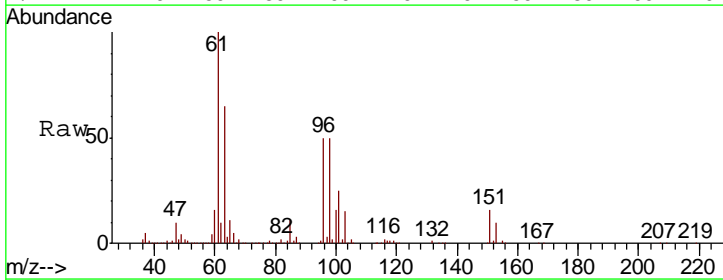
Instrument :
 MSVOA_W
 ClientSampled :

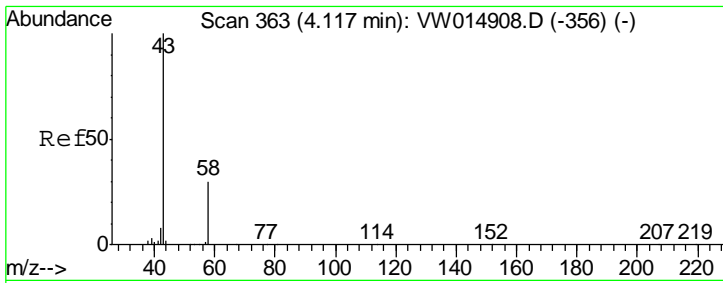
Tgt Ion	Resp	Lower	Upper
101	335179		
101	100		
85	45.5	34.8	52.2
151	67.0	56.3	84.5



#12
 1,1-Dichloroethene
 Concen: 26.019 ug/L
 RT: 4.04 min Scan# 351
 Delta R.T. -0.00 min
 Lab File: VW014932.D
 Acq: 10 Feb 2020 10:14

Tgt Ion	Resp	Lower	Upper
96	313950		
96	100		
61	198.0	134.7	250.1
63	129.3	110.2	204.8

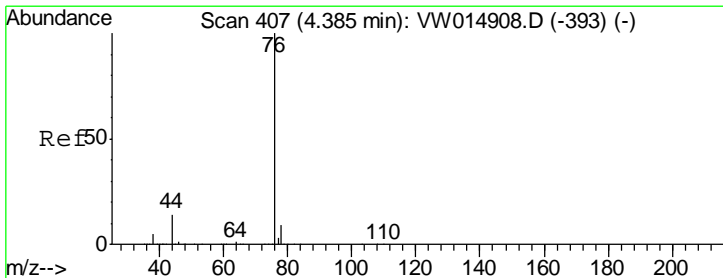
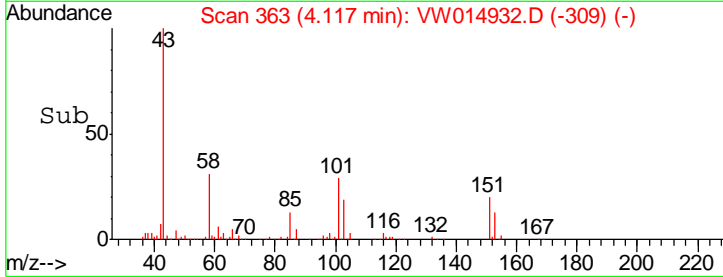
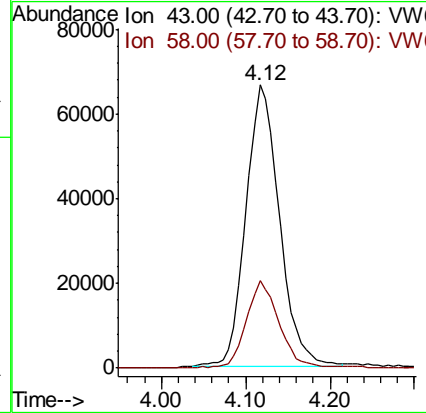
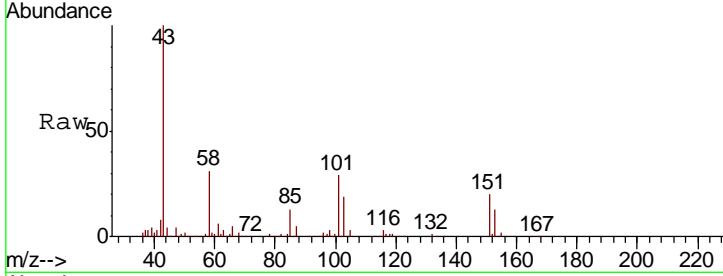




#13
 Acetone
 Concen: 44.063 ug/L
 RT: 4.12 min Scan# 363
 Delta R.T. -0.00 min
 Lab File: VW014932.D
 Acq: 10 Feb 2020 10:14

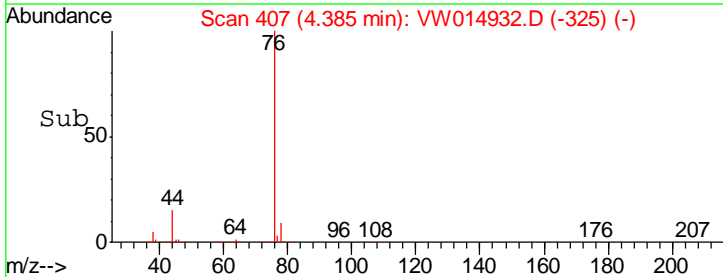
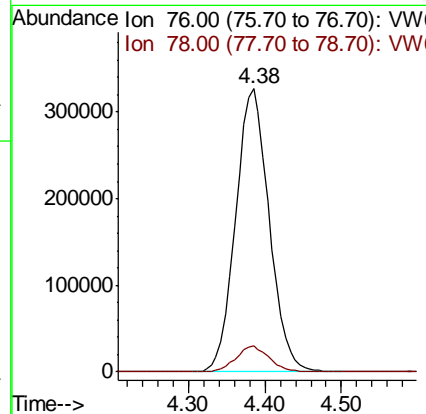
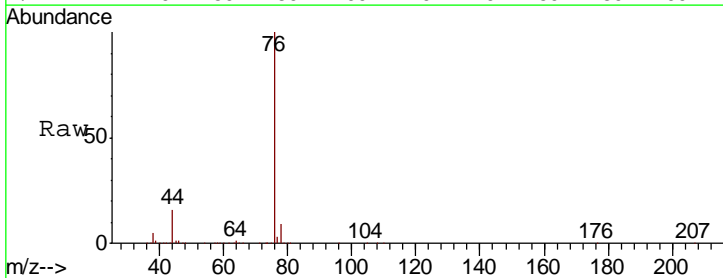
Instrument :
 MSVOA_W
 ClientSampled :

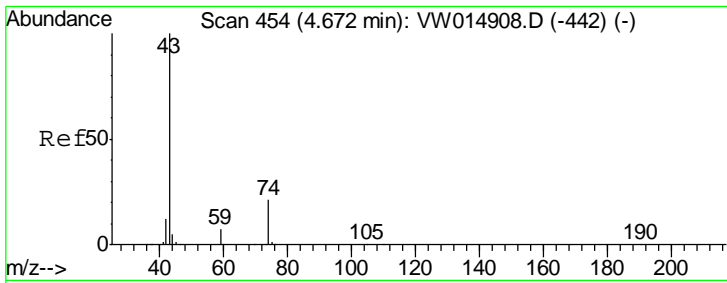
Tgt Ion	Resp	Lower	Upper
43	179740		
58	29.9	0.0	60.4



#14
 Carbon disulfide
 Concen: 27.409 ug/L
 RT: 4.38 min Scan# 407
 Delta R.T. -0.00 min
 Lab File: VW014932.D
 Acq: 10 Feb 2020 10:14

Tgt Ion	Resp	Lower	Upper
76	992988		
78	9.1	7.0	10.6

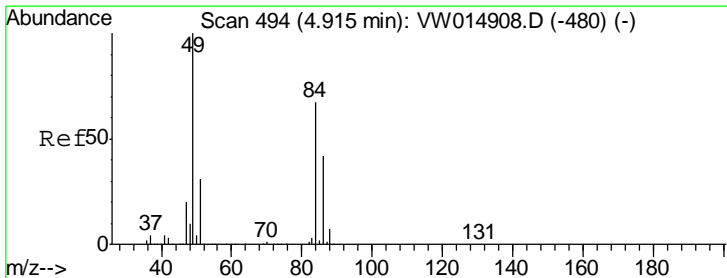
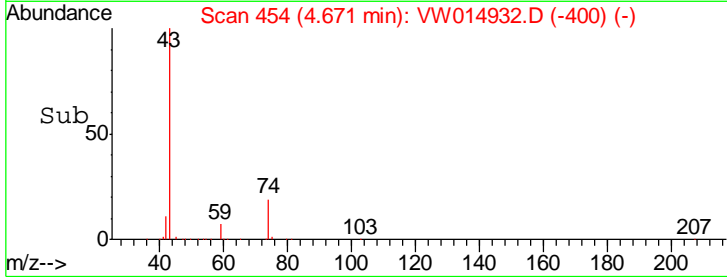
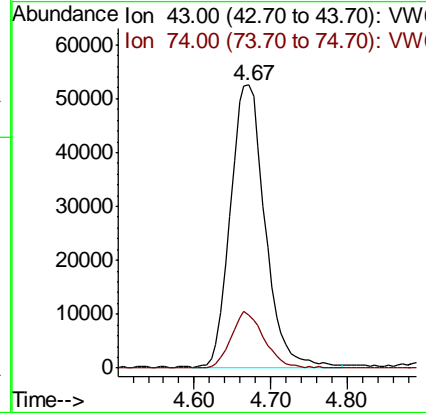
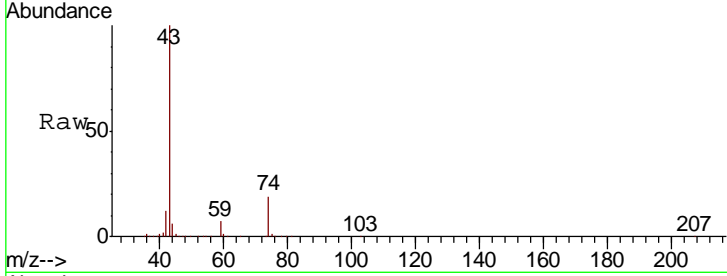




#15
 Methyl Acetate
 Concen: 24.383 ug/L
 RT: 4.67 min Scan# 454
 Delta R.T. -0.00 min
 Lab File: VW014932.D
 Acq: 10 Feb 2020 10:14

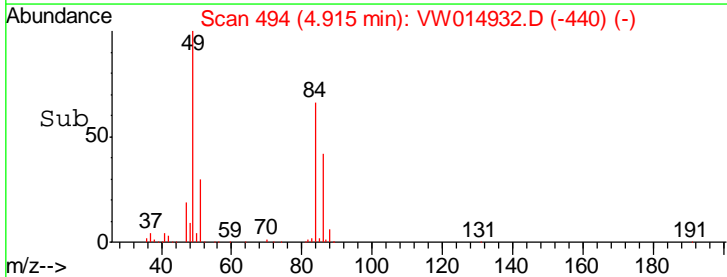
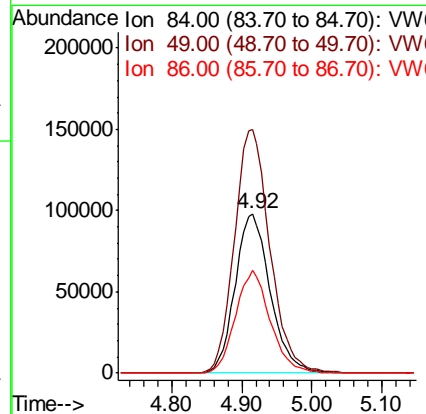
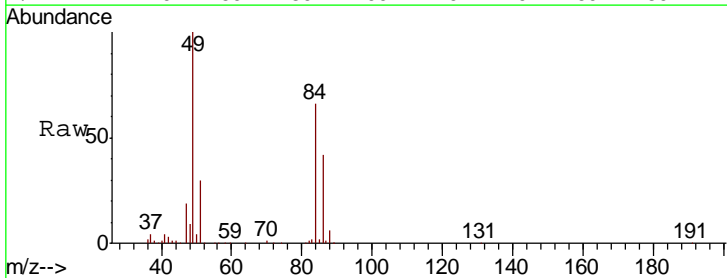
Instrument :
 MSVOA_W
 ClientSampled :

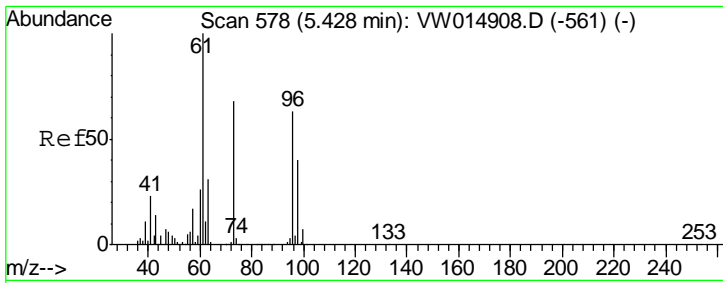
Tgt Ion	Resp	Lower	Upper
43	163672		
74	19.1	16.5	24.7



#16
 Methylene chloride
 Concen: 22.078 ug/L
 RT: 4.92 min Scan# 494
 Delta R.T. -0.00 min
 Lab File: VW014932.D
 Acq: 10 Feb 2020 10:14

Tgt Ion	Resp	Lower	Upper
84	342128		
49	152.5	95.8	177.8
86	64.4	44.2	82.2

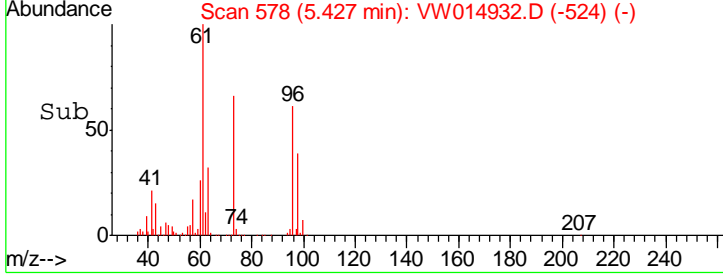
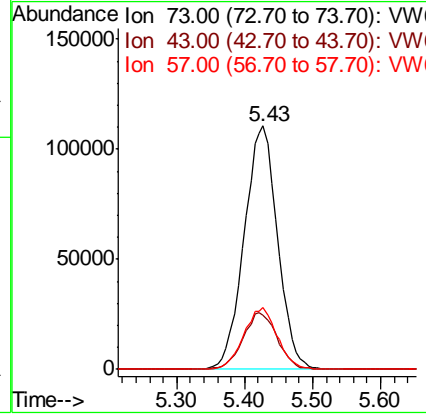
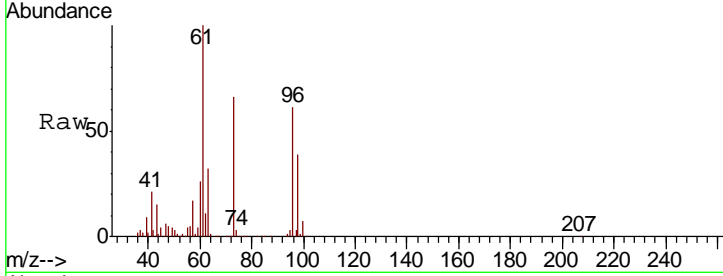




#17
 Methyl tert-butyl Ether
 Concen: 23.888 ug/L
 RT: 5.43 min Scan# 578
 Delta R.T. -0.00 min
 Lab File: VW014932.D
 Acq: 10 Feb 2020 10:14

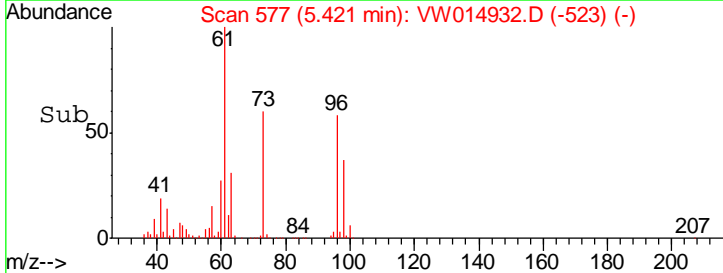
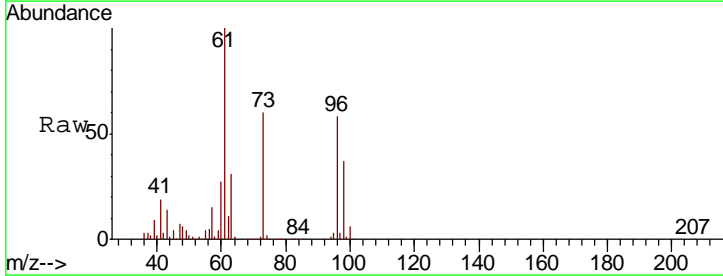
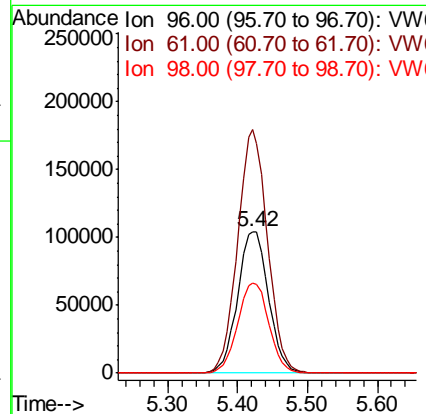
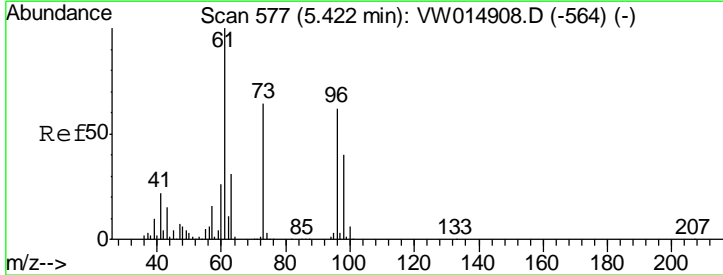
Instrument :
 MSVOA_W
 ClientSampled :

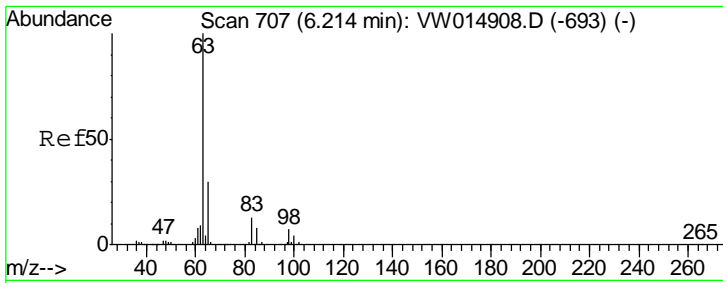
Tgt Ion	Resp	Lower	Upper
73	100		
43	23.7	17.5	26.3
57	25.3	19.4	29.0



#18
 trans-1,2-Dichloroethene
 Concen: 26.146 ug/L
 RT: 5.42 min Scan# 577
 Delta R.T. -0.00 min
 Lab File: VW014932.D
 Acq: 10 Feb 2020 10:14

Tgt Ion	Resp	Lower	Upper
96	100		
61	171.9	104.4	194.0
98	63.9	43.8	81.3

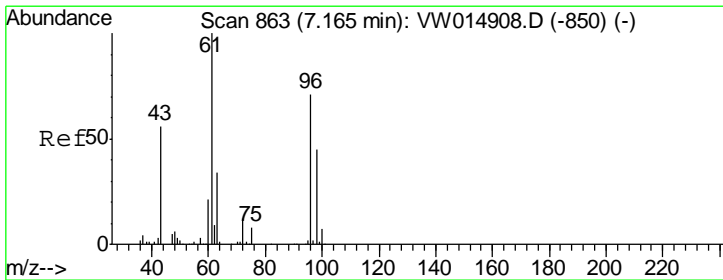
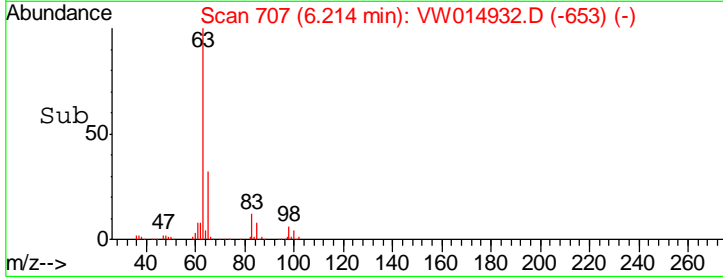
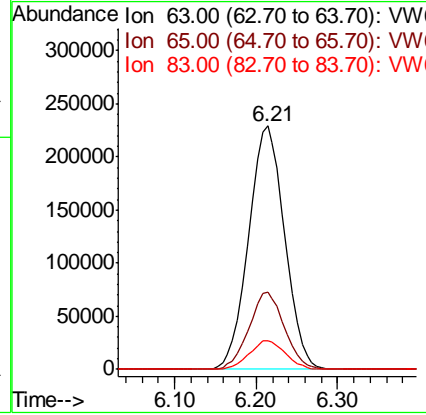
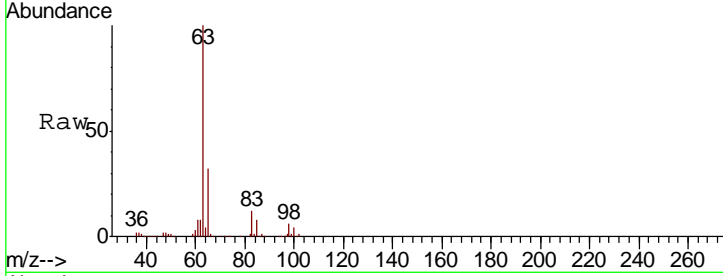




#19
 1,1-Dichloroethane
 Concen: 28.418 ug/L
 RT: 6.21 min Scan# 707
 Delta R.T. -0.00 min
 Lab File: VW014932.D
 Acq: 10 Feb 2020 10:14

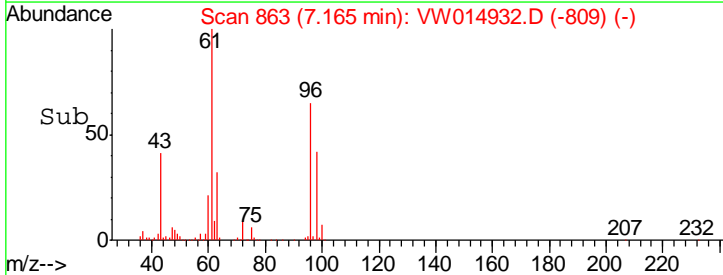
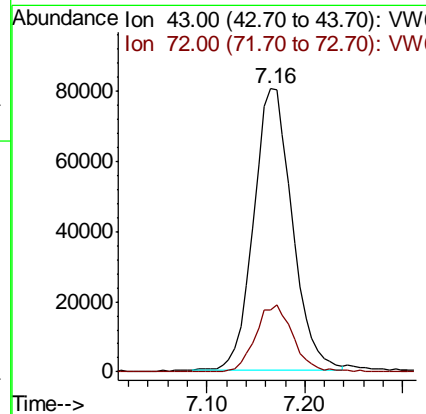
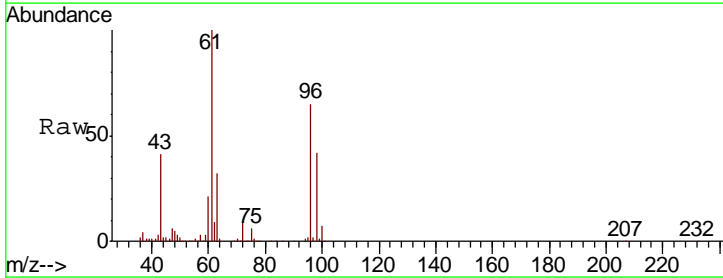
Instrument :
 MSVOA_W
 ClientSampled :

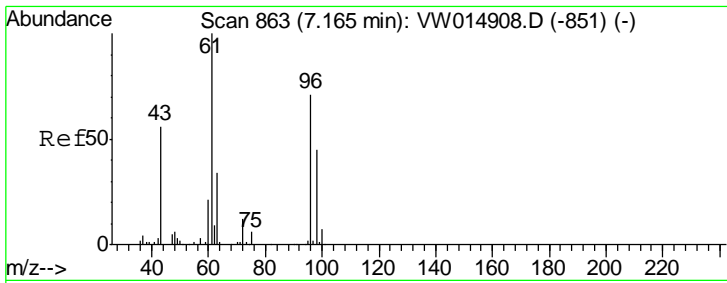
Tgt Ion	Resp	Lower	Upper
63	100		
65	31.7	21.5	39.9
83	11.8	8.8	16.3



#21
 2-Butanone
 Concen: 45.938 ug/L
 RT: 7.16 min Scan# 863
 Delta R.T. -0.00 min
 Lab File: VW014932.D
 Acq: 10 Feb 2020 10:14

Tgt Ion	Resp	Lower	Upper
43	100		
72	23.3	11.9	35.5

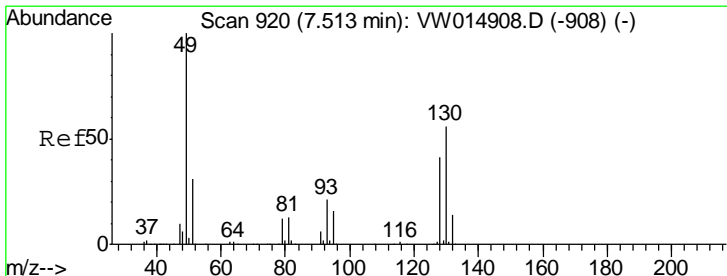
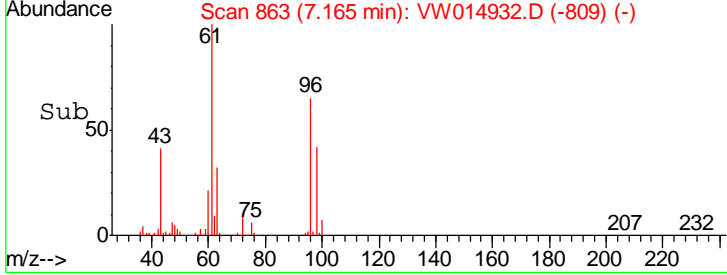
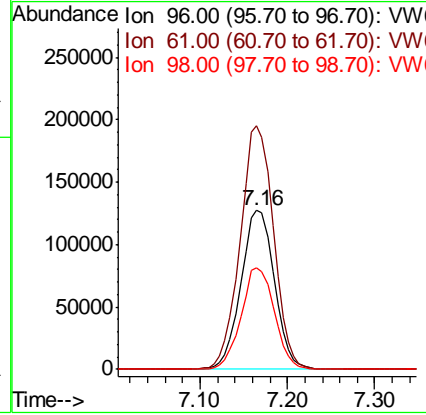
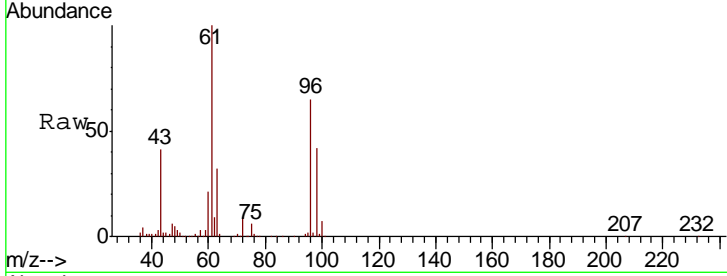




#22
 cis-1,2-Dichloroethene
 Concen: 25.700 ug/L
 RT: 7.16 min Scan# 863
 Delta R.T. -0.00 min
 Lab File: VW014932.D
 Acq: 10 Feb 2020 10:14

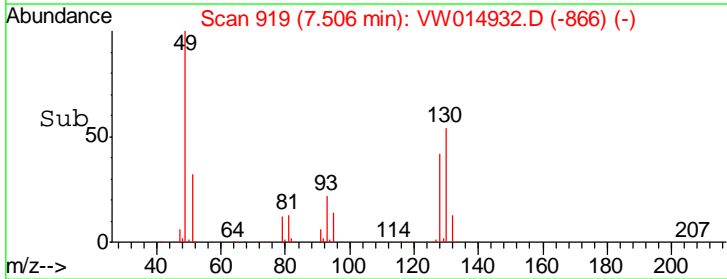
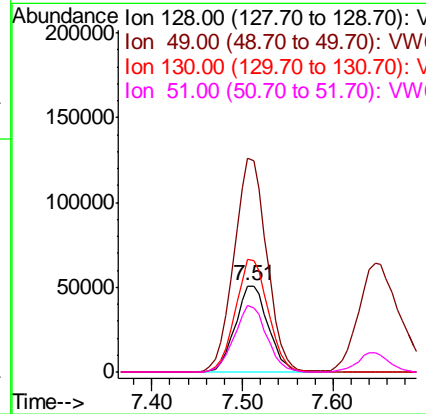
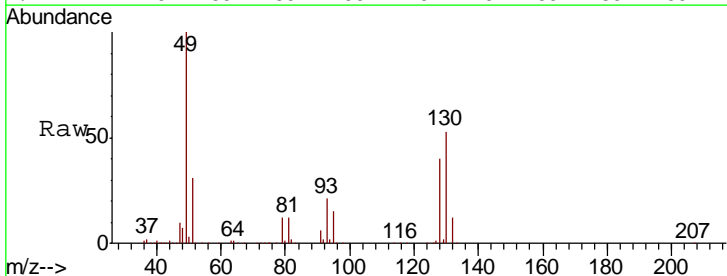
Instrument :
 MSVOA_W
 ClientSampled :

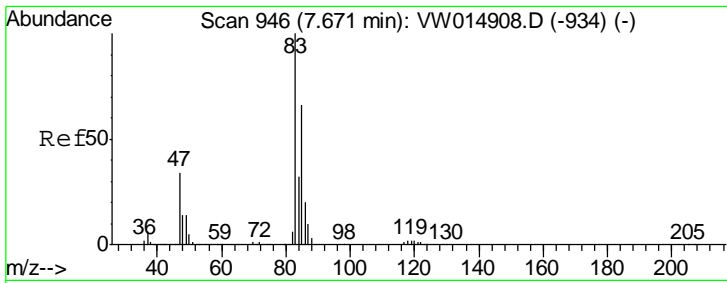
Tgt Ion	Resp	Lower	Upper
96	339836		
61	153.5	98.6	183.0
98	63.8	44.2	82.2



#23
 Bromochloromethane
 Concen: 23.640 ug/L
 RT: 7.51 min Scan# 919
 Delta R.T. -0.01 min
 Lab File: VW014932.D
 Acq: 10 Feb 2020 10:14

Tgt Ion	Resp	Lower	Upper
128	128254		
49	247.4	146.0	271.2
130	130.3	90.9	168.9
51	77.2	51.8	77.8

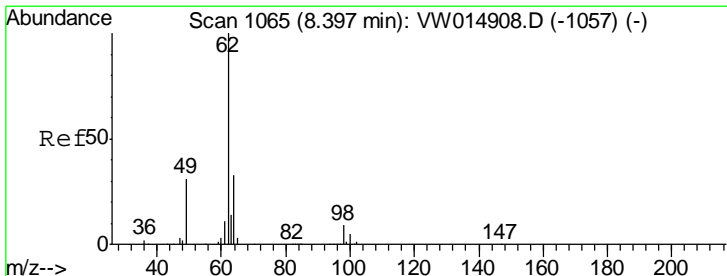
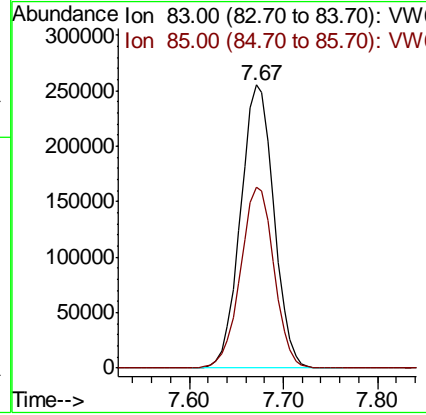
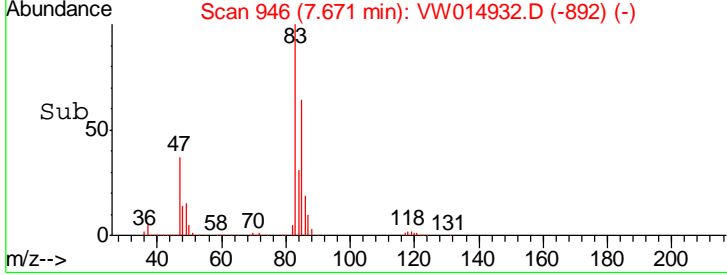
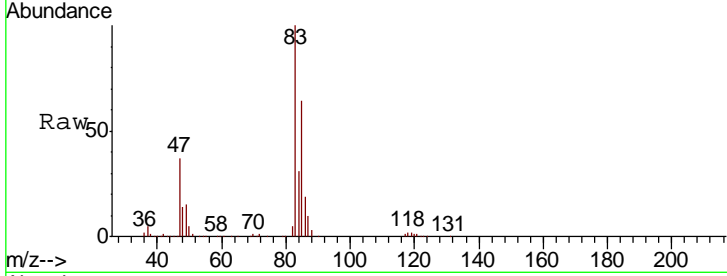




#25
 Chloroform
 Concen: 27.755 ug/L
 RT: 7.67 min Scan# 946
 Delta R.T. -0.00 min
 Lab File: VW014932.D
 Acq: 10 Feb 2020 10:14

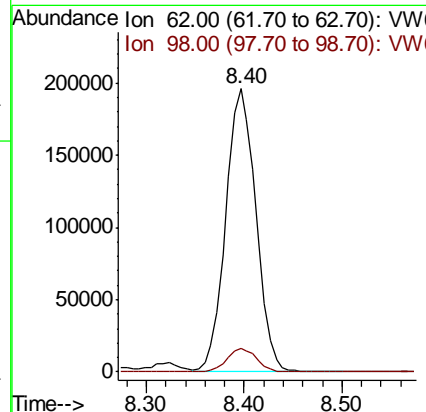
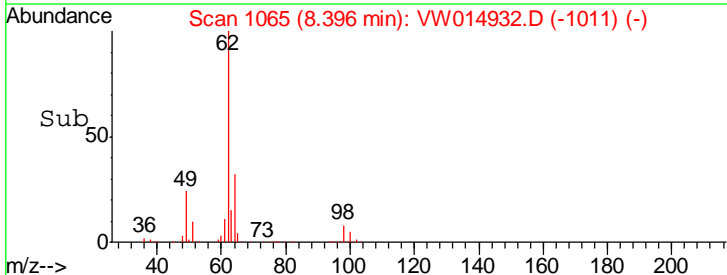
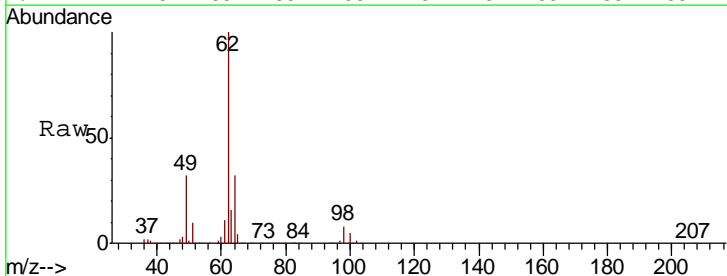
Instrument :
 MSVOA_W
 ClientSampled :

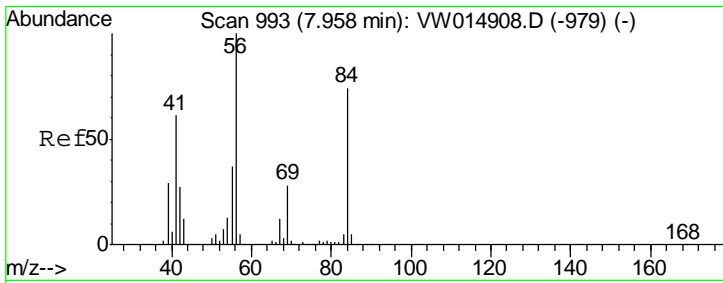
Tgt Ion	Resp	Lower	Upper
83	100		
85	64.3	45.4	84.4



#27
 1,2-Dichloroethane
 Concen: 26.770 ug/L
 RT: 8.40 min Scan# 1065
 Delta R.T. -0.00 min
 Lab File: VW014932.D
 Acq: 10 Feb 2020 10:14

Tgt Ion	Resp	Lower	Upper
62	100		
98	8.5	7.2	10.8

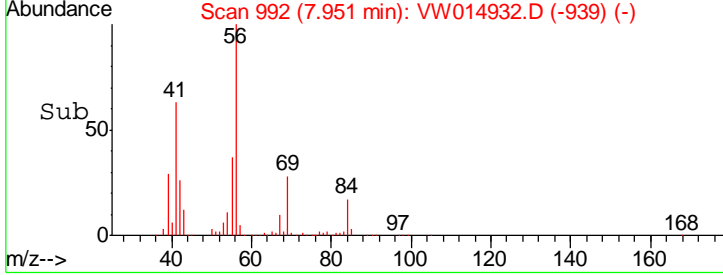
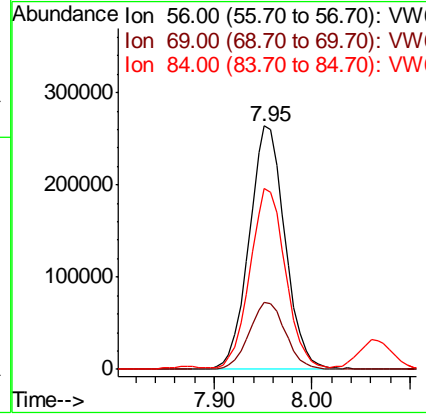
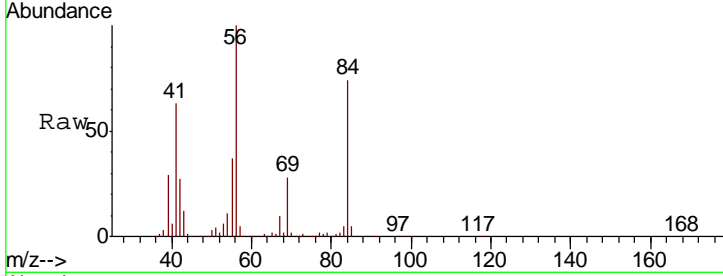




#30
 Cyclohexane
 Concen: 29.774 ug/L
 RT: 7.95 min Scan# 992
 Delta R.T. -0.01 min
 Lab File: VW014932.D
 Acq: 10 Feb 2020 10:14

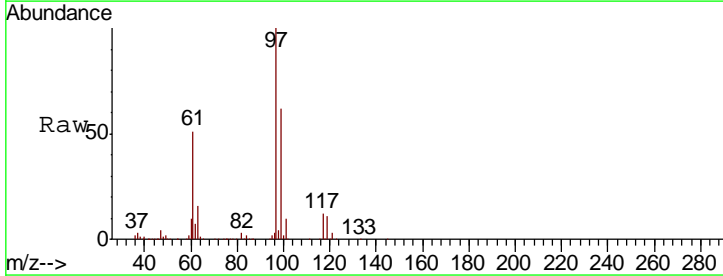
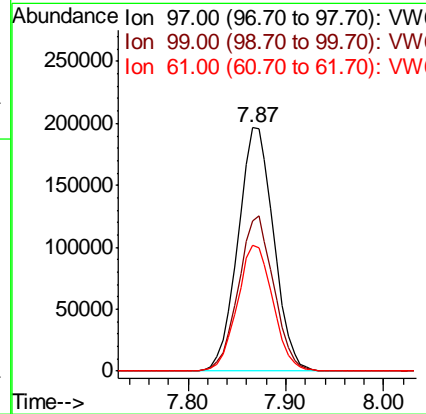
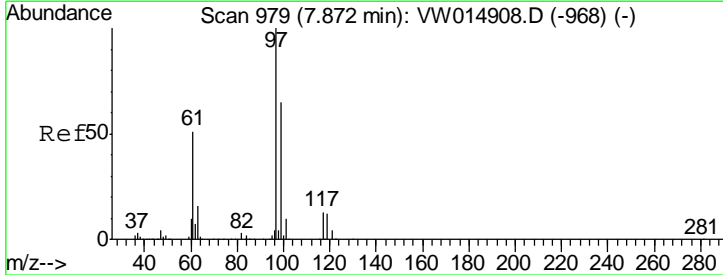
Instrument :
 MSVOA_W
ClientSampled :

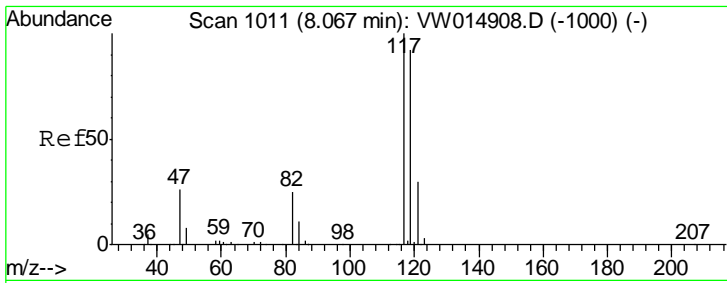
Tgt Ion	Resp	Lower	Upper
56	100		
69	28.0	22.9	34.3
84	74.3	63.8	95.6



#31
 1,1,1-Trichloroethane
 Concen: 28.804 ug/L
 RT: 7.87 min Scan# 978
 Delta R.T. -0.01 min
 Lab File: VW014932.D
 Acq: 10 Feb 2020 10:14

Tgt Ion	Resp	Lower	Upper
97	100		
99	63.0	51.0	76.6
61	51.7	38.9	58.3

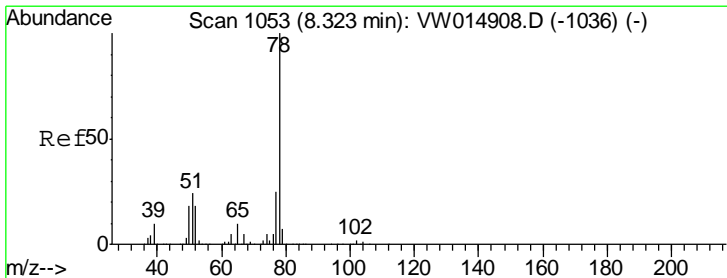
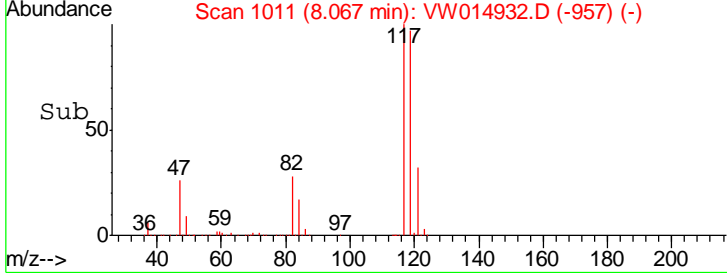
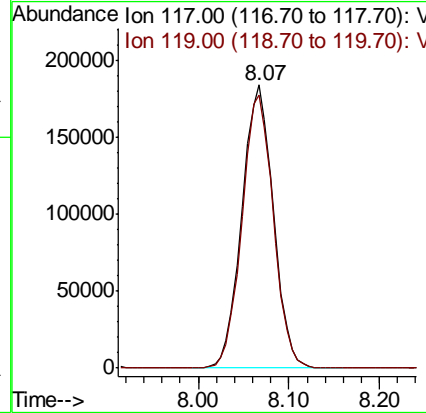
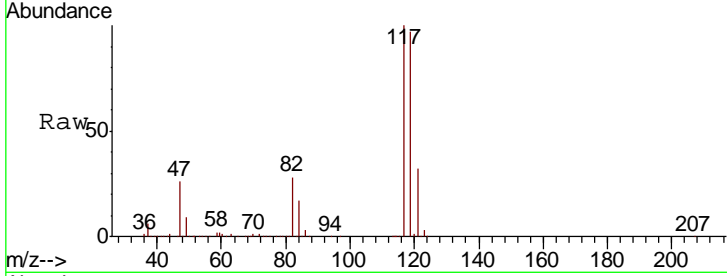




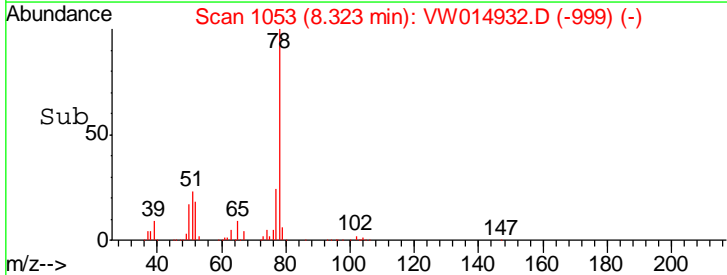
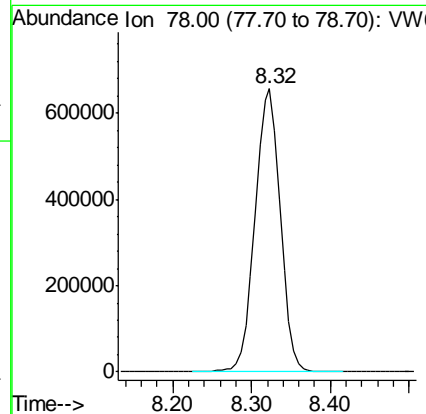
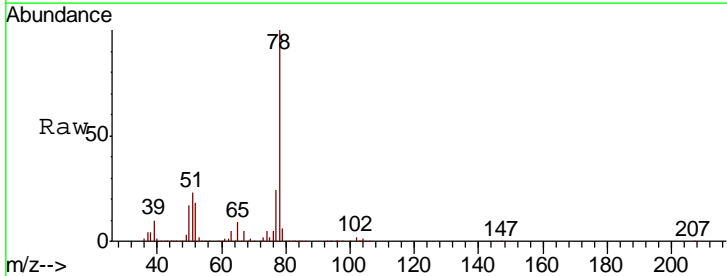
#32
 Carbon tetrachloride
 Concen: 28.544 ug/L
 RT: 8.07 min Scan# 1011
 Delta R.T. -0.00 min
 Lab File: VW014932.D
 Acq: 10 Feb 2020 10:14

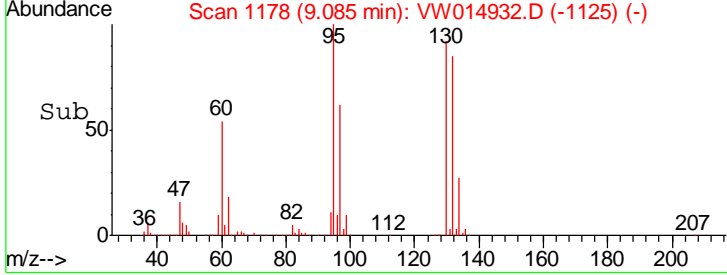
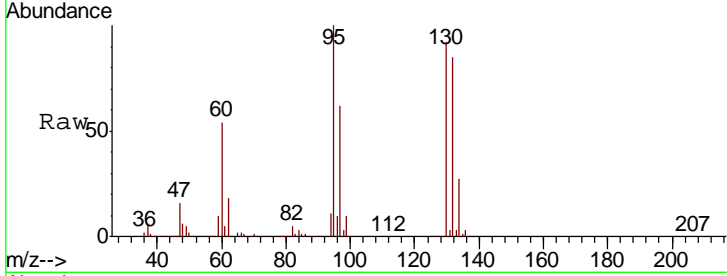
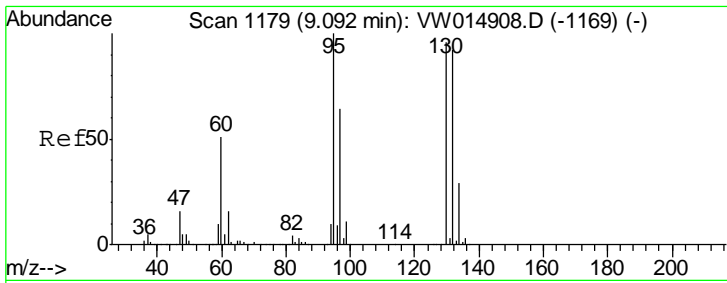
Instrument :
 MSVOA_W
 ClientSampled :

Tgt Ion: 117 Resp: 443049
 Ion Ratio Lower Upper
 117 100
 119 96.3 76.3 114.5



#34
 Benzene
 Concen: 28.068 ug/L
 RT: 8.32 min Scan# 1053
 Delta R.T. -0.00 min
 Lab File: VW014932.D
 Acq: 10 Feb 2020 10:14
 Tgt Ion: 78 Resp: 1461641

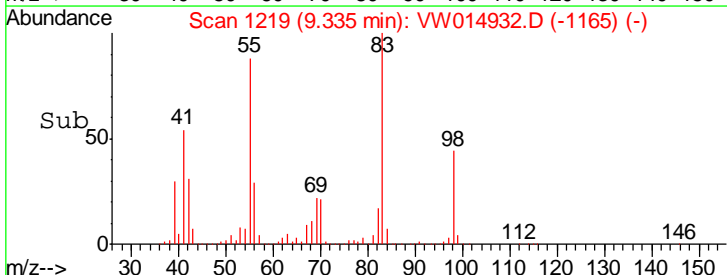
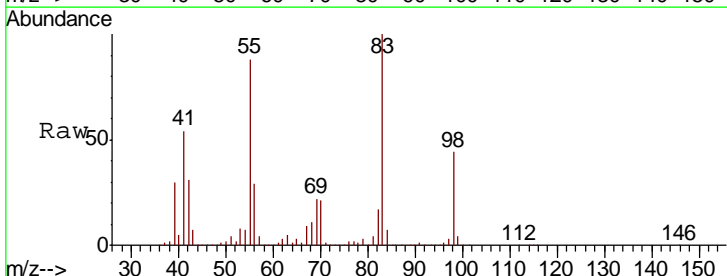
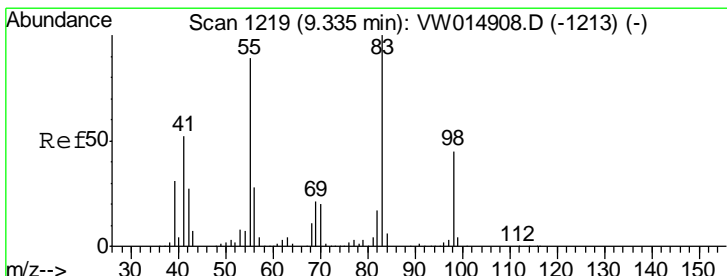
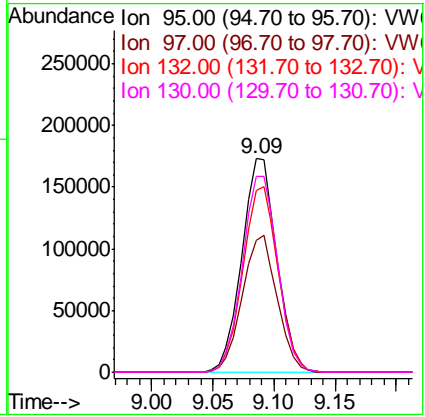




#35
 Trichloroethene
 Concen: 26.695 ug/L
 RT: 9.09 min Scan# 1178
 Delta R.T. -0.01 min
 Lab File: VW014932.D
 Acq: 10 Feb 2020 10:14

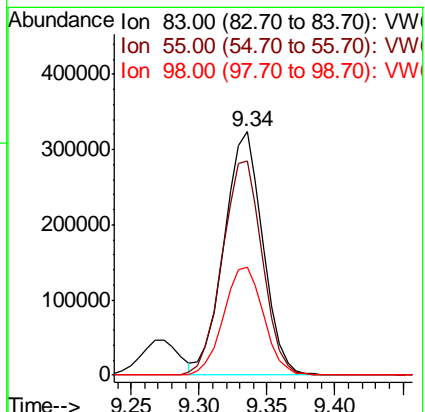
Instrument :
 MSVOA_W
 ClientSampled :

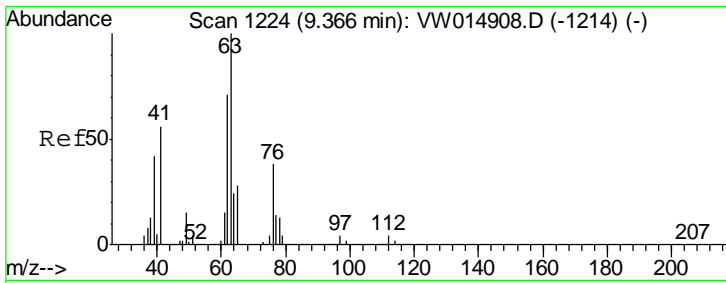
Tgt Ion	Resp	Lower	Upper
95	100		
97	63.7	44.4	82.5
132	87.2	63.6	118.0
130	92.3	67.3	124.9



#36
 Methylcyclohexane
 Concen: 28.469 ug/L
 RT: 9.34 min Scan# 1219
 Delta R.T. -0.00 min
 Lab File: VW014932.D
 Acq: 10 Feb 2020 10:14

Tgt Ion	Resp	Lower	Upper
83	100		
55	90.8	68.0	102.0
98	45.8	37.8	56.6

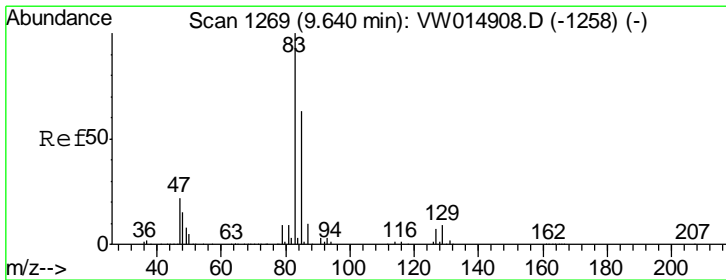
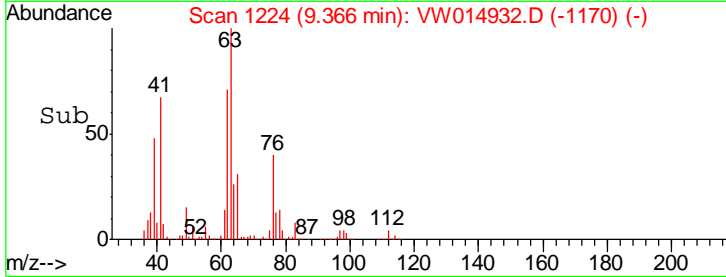
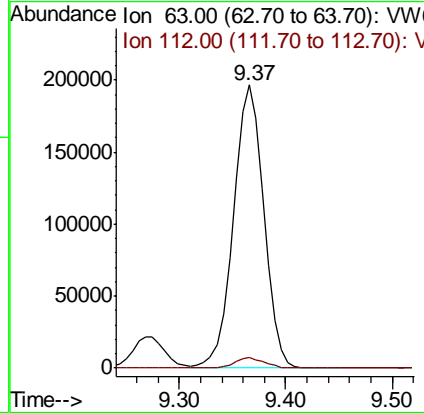
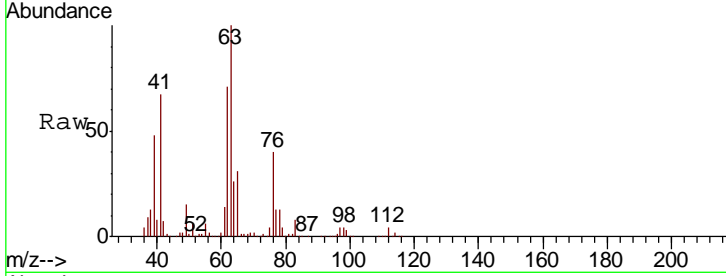




#40
 1,2-Dichloropropane
 Concen: 28.119 ug/L
 RT: 9.37 min Scan# 1224
 Delta R.T. -0.00 min
 Lab File: VW014932.D
 Acq: 10 Feb 2020 10:14

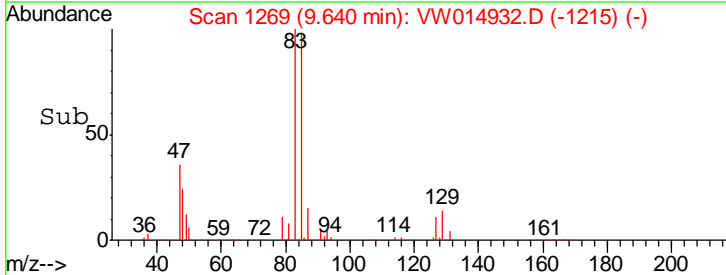
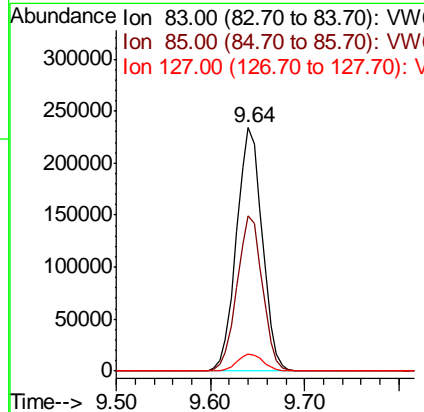
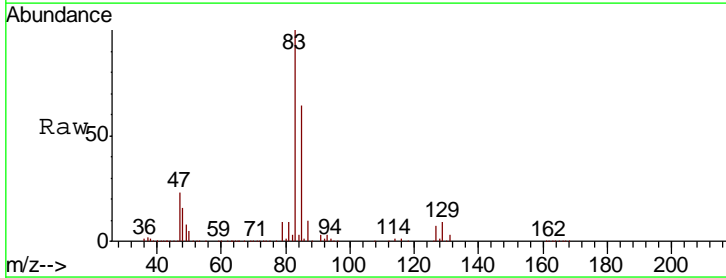
Instrument :
 MSVOA_W
 ClientSampled :

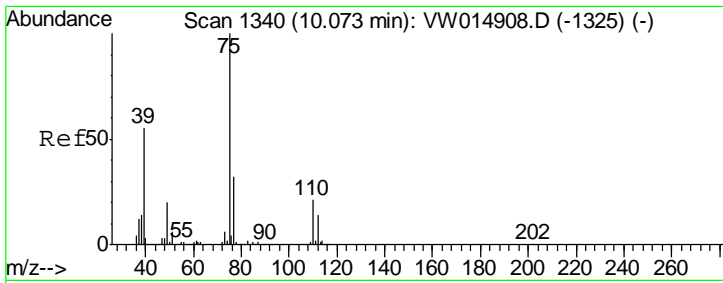
Tgt Ion	Resp	Lower	Upper
63	391850		
112	3.6	3.1	4.7



#41
 Bromodichloromethane
 Concen: 27.818 ug/L
 RT: 9.64 min Scan# 1269
 Delta R.T. -0.00 min
 Lab File: VW014932.D
 Acq: 10 Feb 2020 10:14

Tgt Ion	Resp	Lower	Upper
83	444287		
85	63.6	44.2	82.0
127	7.2	6.0	9.0

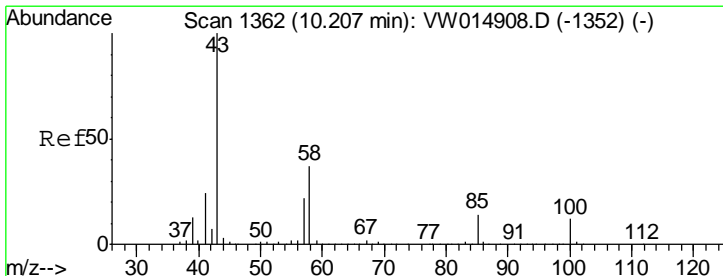
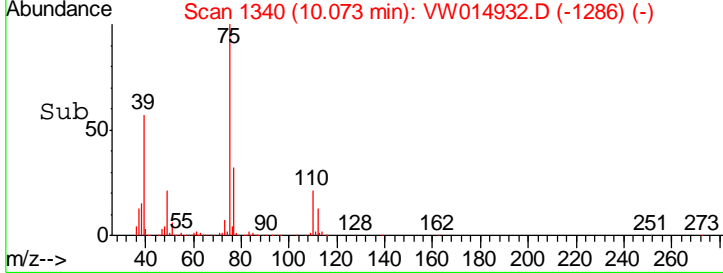
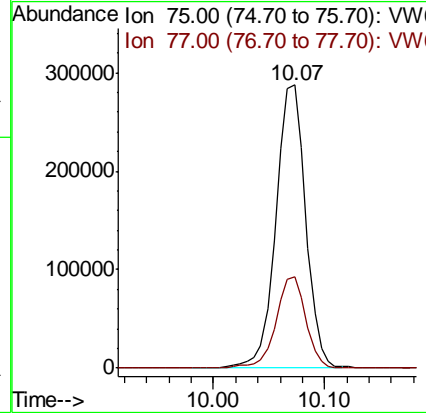
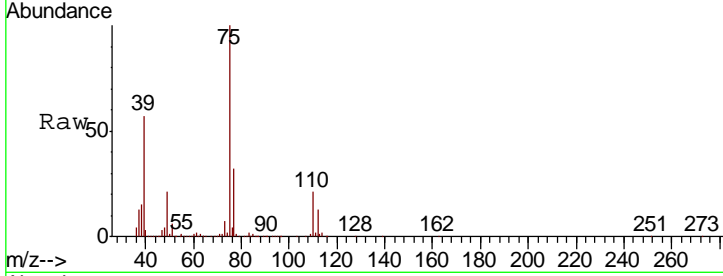




#42
 cis-1,3-Dichloropropene
 Concen: 27.091 ug/L
 RT: 10.07 min Scan# 1340
 Delta R.T. -0.00 min
 Lab File: VW014932.D
 Acq: 10 Feb 2020 10:14

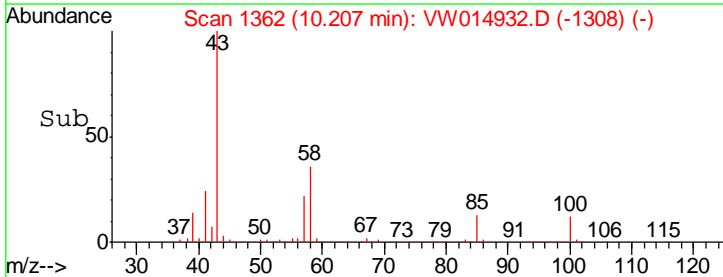
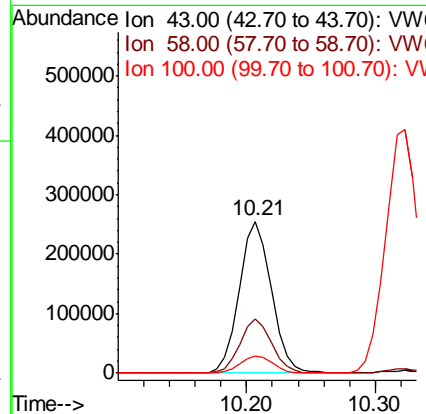
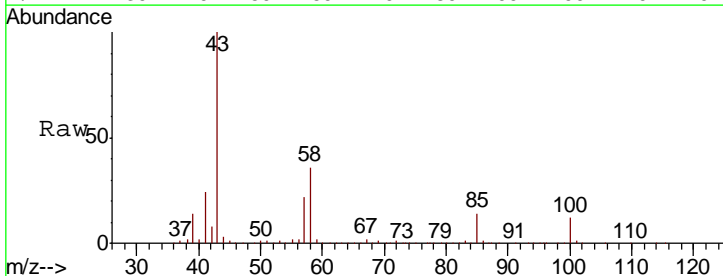
Instrument : MSVOA_W
 ClientSampled :

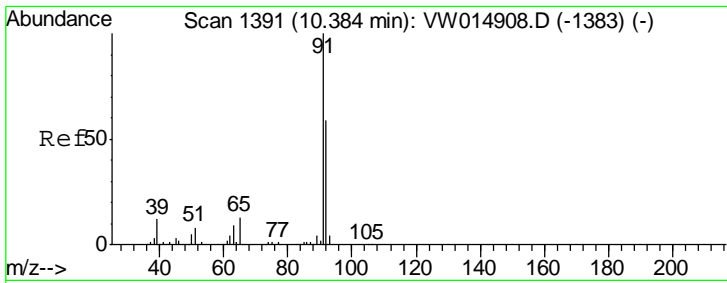
Tgt Ion	Resp	Lower	Upper
75	100		
77	32.2	22.5	41.9



#43
 4-Methyl-2-pentanone
 Concen: 48.174 ug/L
 RT: 10.21 min Scan# 1362
 Delta R.T. -0.00 min
 Lab File: VW014932.D
 Acq: 10 Feb 2020 10:14

Tgt Ion	Resp	Lower	Upper
43	100		
58	35.3	30.0	45.0
100	11.6	10.6	15.8

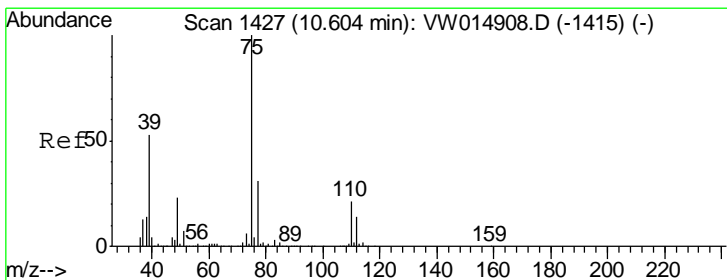
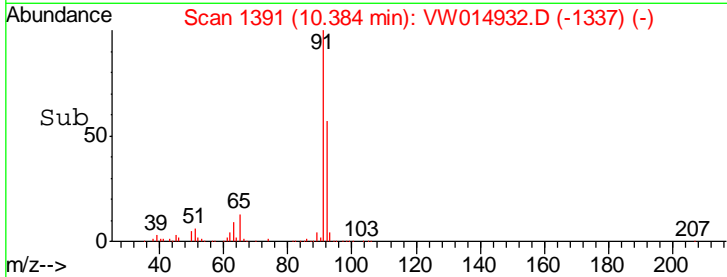
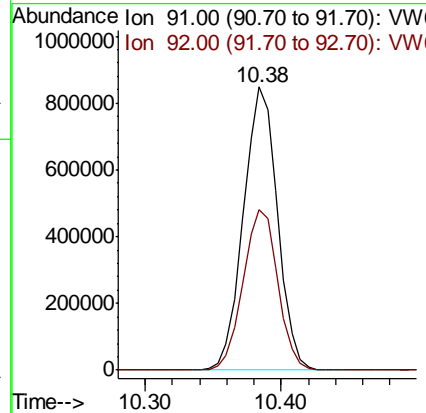
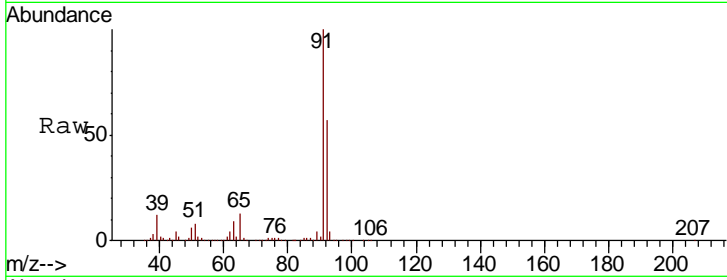




#44
 Toluene
 Concen: 28.038 ug/L
 RT: 10.38 min Scan# 1391
 Delta R.T. -0.00 min
 Lab File: VW014932.D
 Acq: 10 Feb 2020 10:14

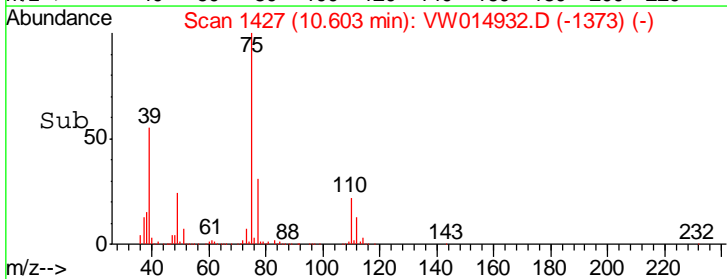
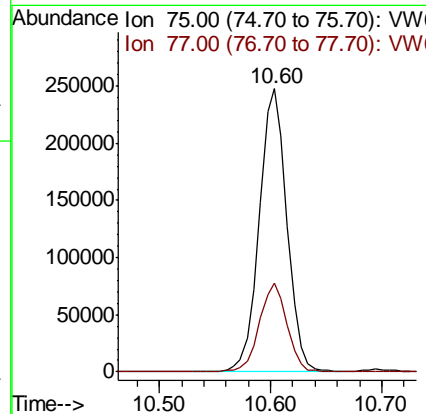
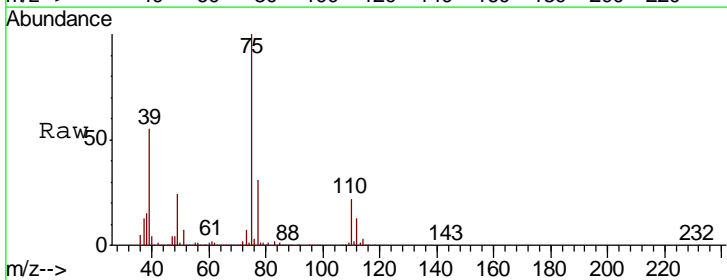
Instrument :
 MSVOA_W
 ClientSampled :

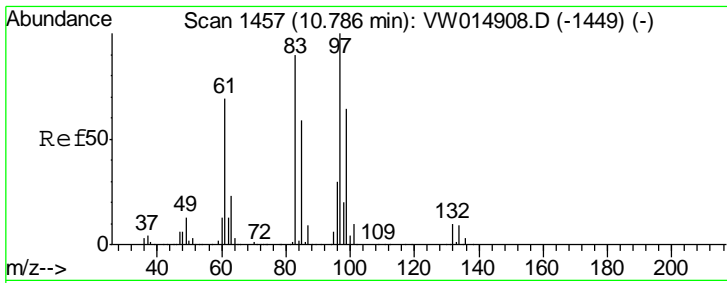
Tgt Ion: 91 Resp: 1482228
 Ion Ratio Lower Upper
 91 100
 92 56.8 41.4 77.0



#45
 trans-1,3-Dichloropropene
 Concen: 26.886 ug/L
 RT: 10.60 min Scan# 1427
 Delta R.T. -0.00 min
 Lab File: VW014932.D
 Acq: 10 Feb 2020 10:14

Tgt Ion: 75 Resp: 428430
 Ion Ratio Lower Upper
 75 100
 77 31.2 21.8 40.6

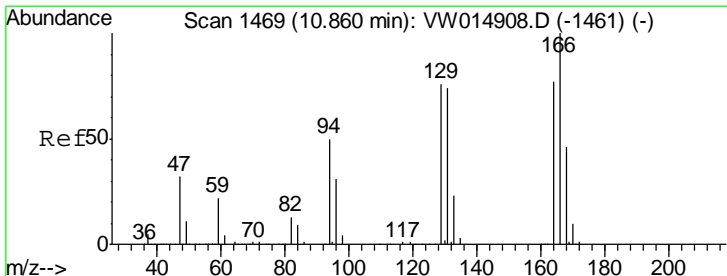
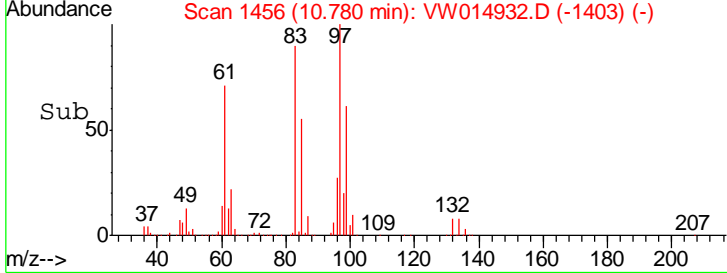
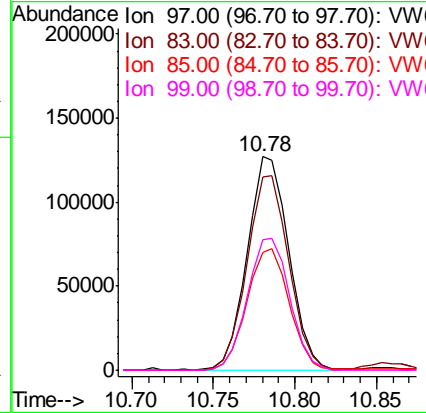
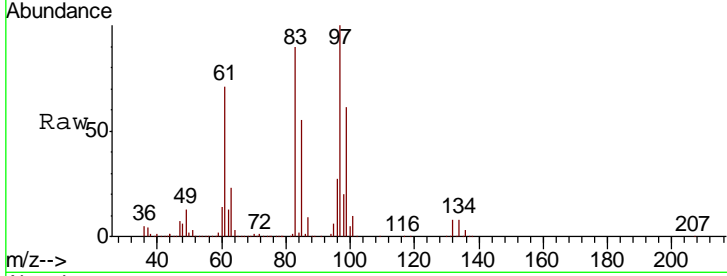




#46
 1,1,2-Trichloroethane
 Concen: 24.583 ug/L
 RT: 10.78 min Scan# 1456
 Delta R.T. -0.01 min
 Lab File: VW014932.D
 Acq: 10 Feb 2020 10:14

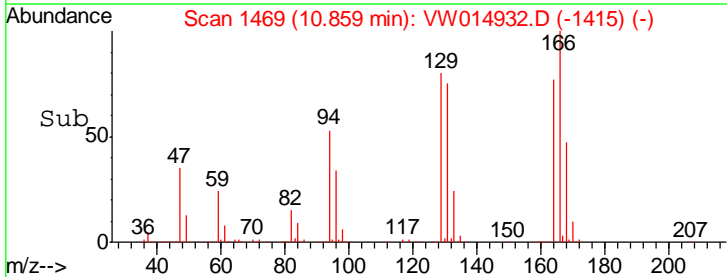
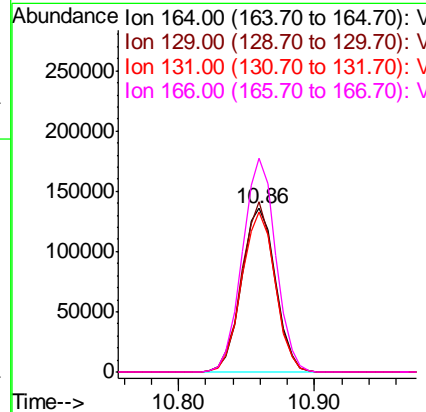
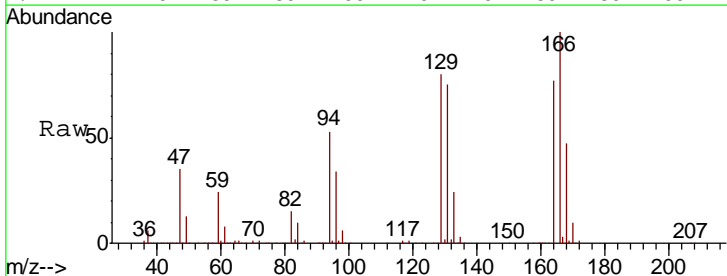
Instrument :
 MSVOA_W
 ClientSampled :

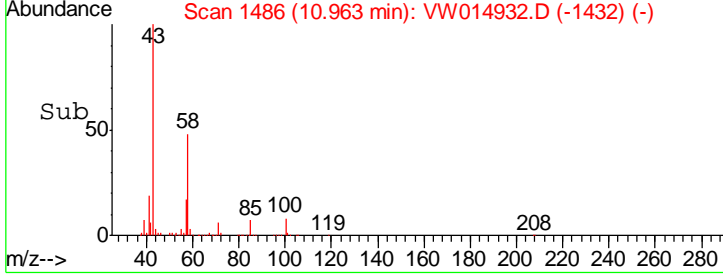
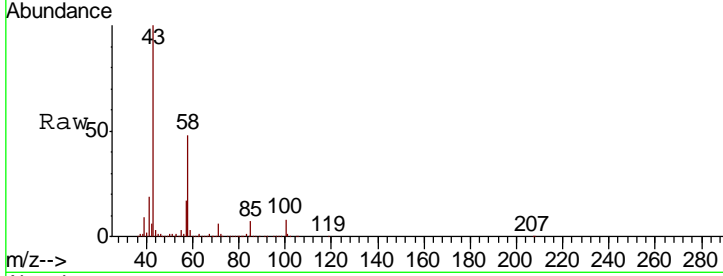
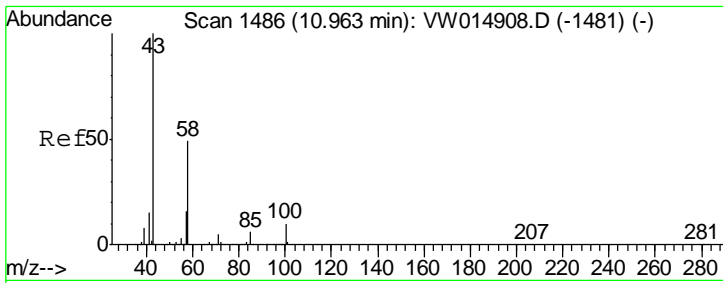
Tgt Ion	Resp	Lower	Upper
97	100		
83	90.3	60.8	112.8
85	55.3	39.9	74.1
99	61.1	42.8	79.6



#47
 Tetrachloroethene
 Concen: 24.989 ug/L
 RT: 10.86 min Scan# 1469
 Delta R.T. -0.00 min
 Lab File: VW014932.D
 Acq: 10 Feb 2020 10:14

Tgt Ion	Resp	Lower	Upper
164	100		
129	104.1	67.5	125.4
131	97.6	64.0	119.0
166	130.6	87.0	161.6

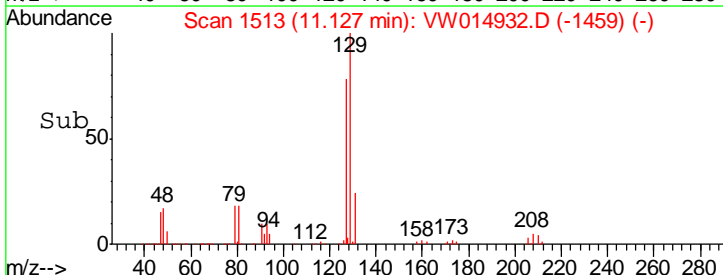
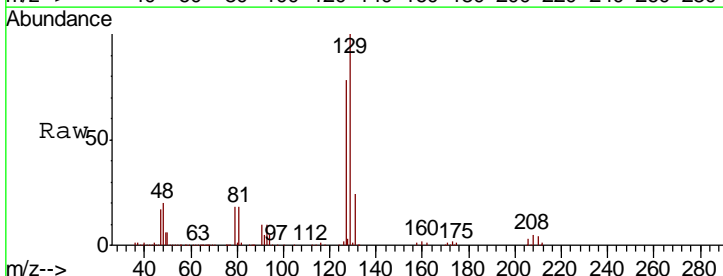
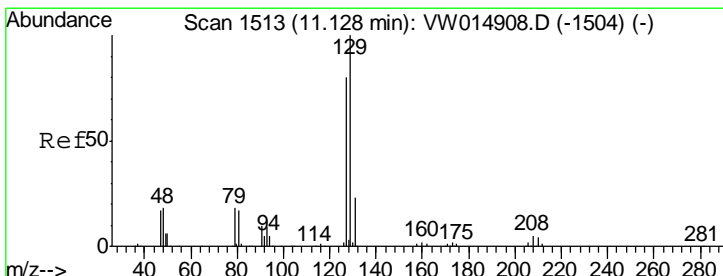
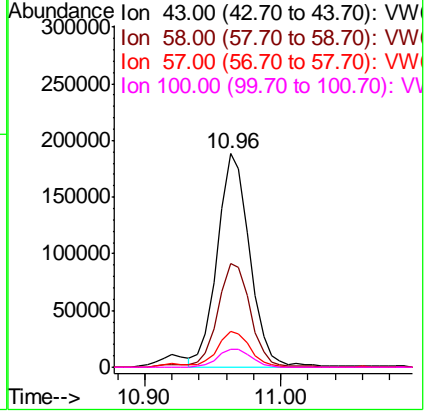




#49
 2-Hexanone
 Concen: 48.603 ug/L
 RT: 10.96 min Scan# 1486
 Delta R.T. -0.00 min
 Lab File: VW014932.D
 Acq: 10 Feb 2020 10:14

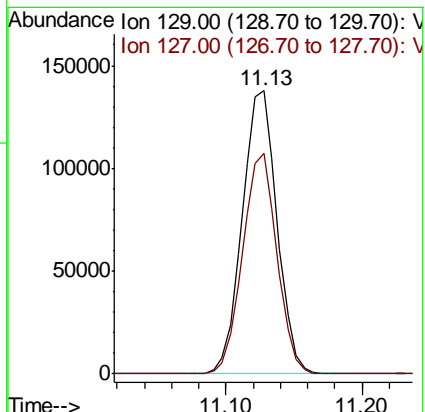
Instrument :
 MSVOA_W
 ClientSampled :

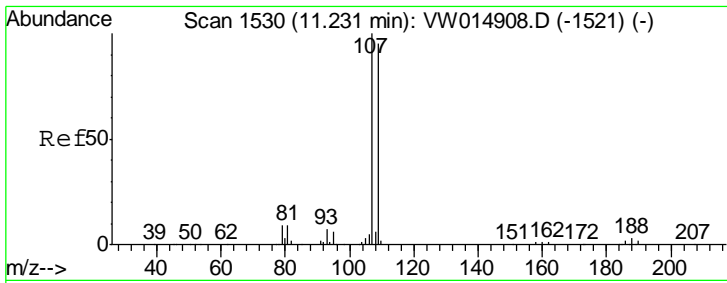
Tgt Ion	Resp	Lower	Upper
43	311959		
58	48.4	42.2	63.2
57	16.7	14.5	21.7
100	8.9	8.6	12.8



#50
 Dibromochloromethane
 Concen: 25.022 ug/L
 RT: 11.13 min Scan# 1513
 Delta R.T. -0.00 min
 Lab File: VW014932.D
 Acq: 10 Feb 2020 10:14

Tgt Ion	Resp	Lower	Upper
129	246702		
127	77.8	54.1	100.5

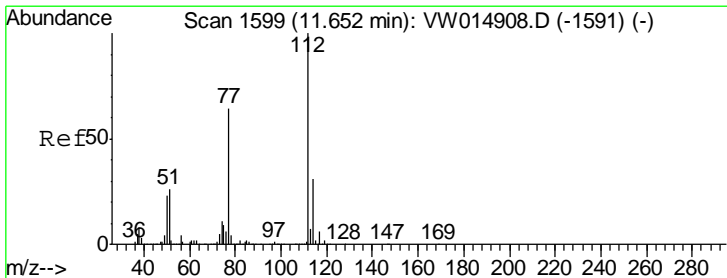
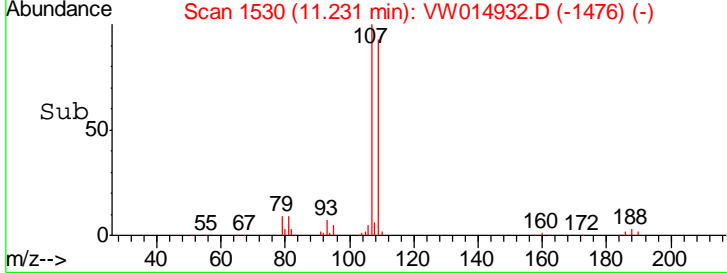
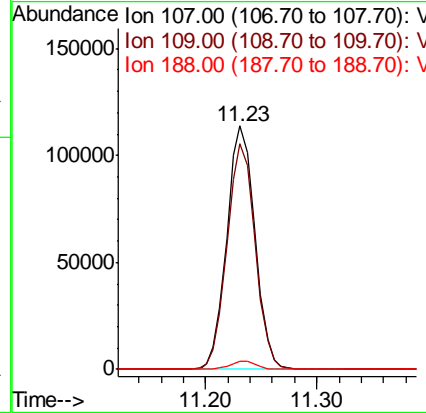
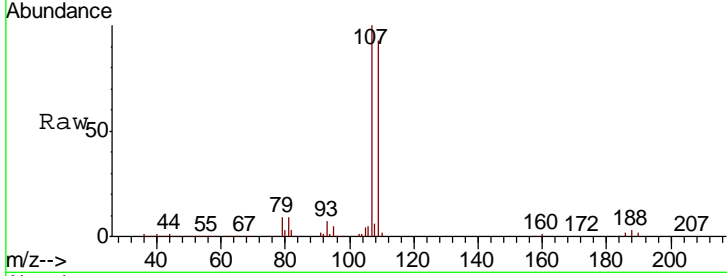




#51
 1,2-Dibromoethane
 Concen: 23.355 ug/L
 RT: 11.23 min Scan# 1530
 Delta R.T. -0.00 min
 Lab File: VW014932.D
 Acq: 10 Feb 2020 10:14

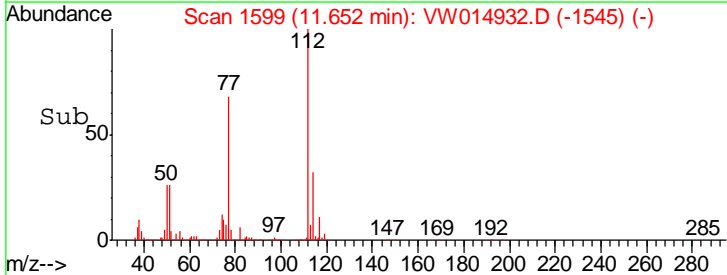
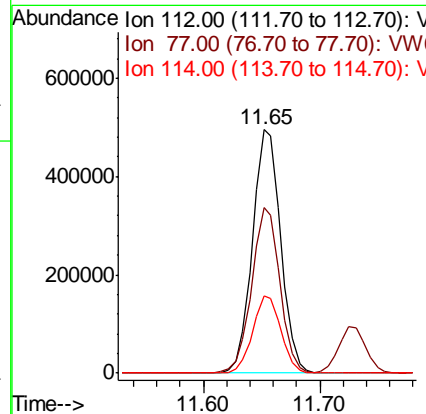
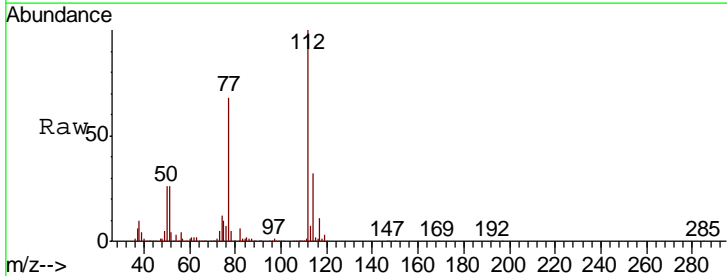
Instrument :
 MSVOA_W
 ClientSampled :

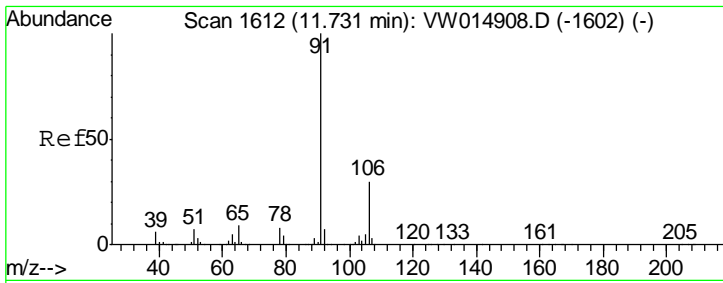
Tgt Ion	Resp	Lower	Upper
107	199351		
109	92.7	65.0	120.6
188	3.4	2.4	3.6



#52
 Chlorobenzene
 Concen: 25.842 ug/L
 RT: 11.65 min Scan# 1599
 Delta R.T. -0.00 min
 Lab File: VW014932.D
 Acq: 10 Feb 2020 10:14

Tgt Ion	Resp	Lower	Upper
112	835257		
77	67.7	49.9	74.9
114	31.9	22.7	42.1

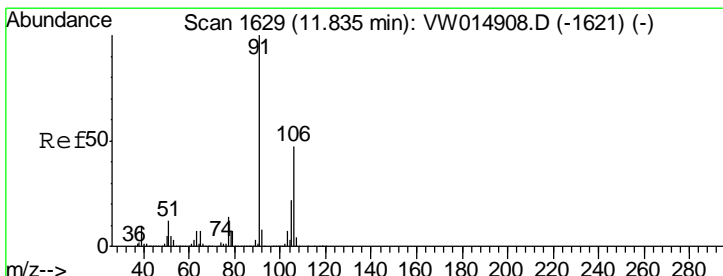
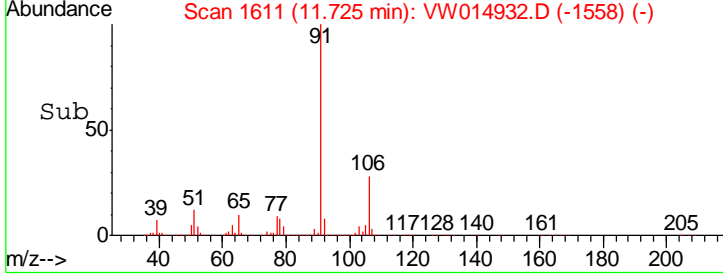
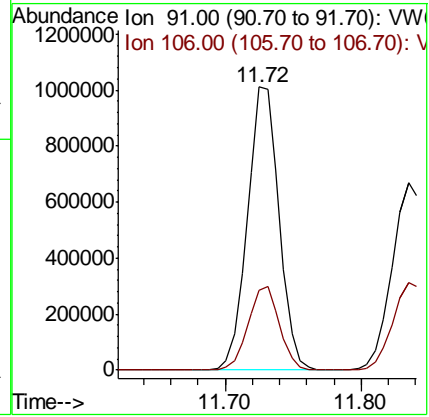
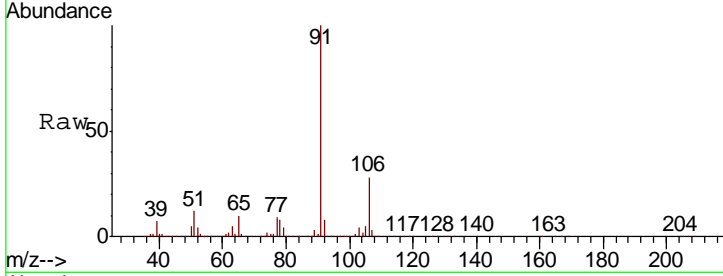




#53
 Ethylbenzene
 Concen: 28.376 ug/L
 RT: 11.72 min Scan# 1611
 Delta R.T. -0.01 min
 Lab File: VW014932.D
 Acq: 10 Feb 2020 10:14

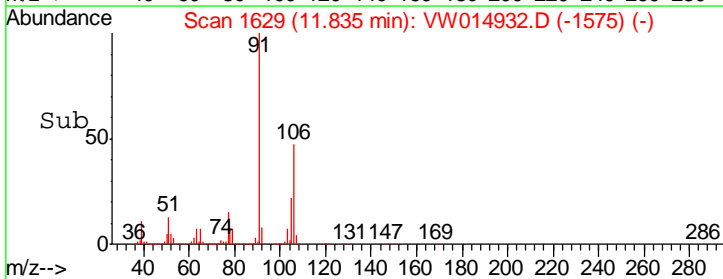
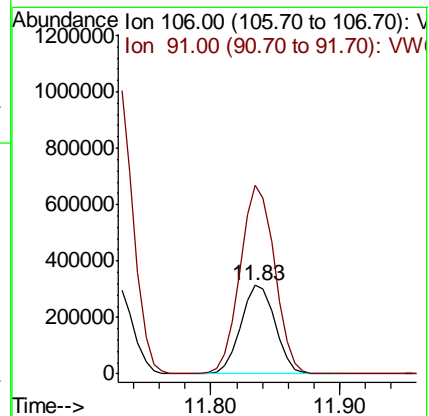
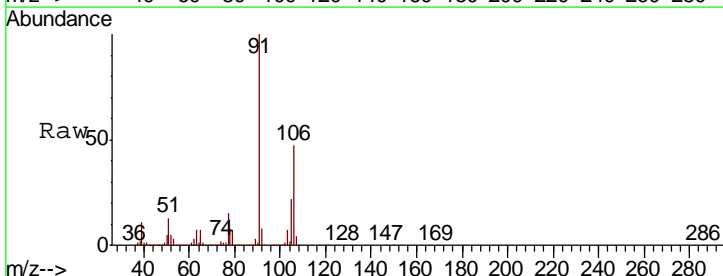
Instrument : MSVOA_W
 ClientSampled :

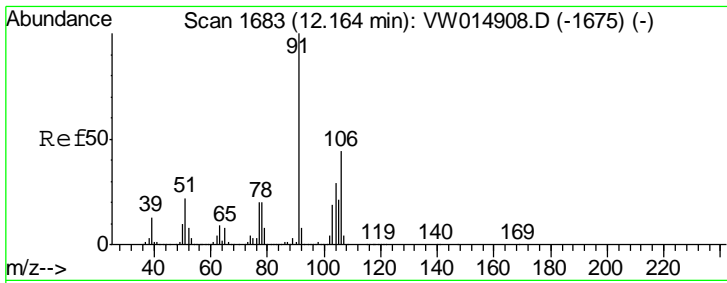
Tgt Ion	Resp	Lower	Upper
91	100		
106	28.4	21.5	39.9



#54
 m,p-Xylene
 Concen: 27.448 ug/L
 RT: 11.83 min Scan# 1629
 Delta R.T. -0.00 min
 Lab File: VW014932.D
 Acq: 10 Feb 2020 10:14

Tgt Ion	Resp	Lower	Upper
106	100		
91	213.5	143.4	266.4

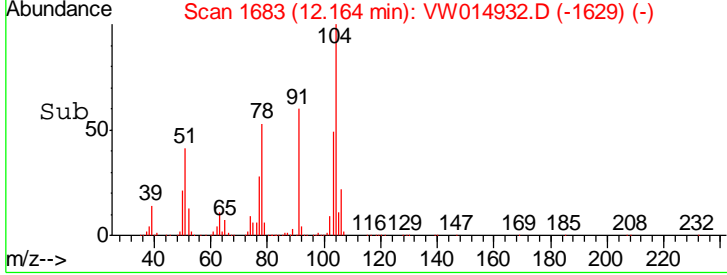
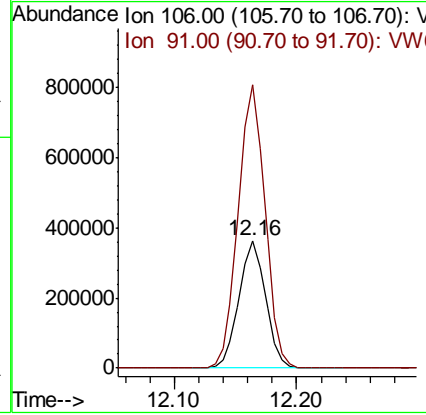
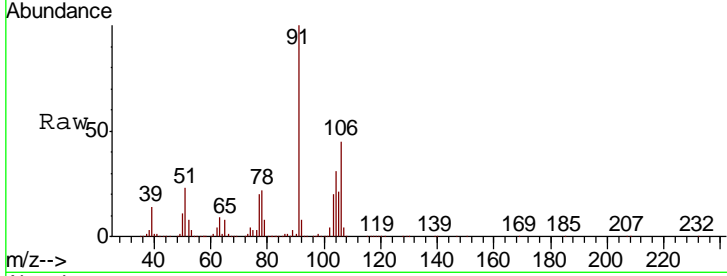




#55
 o-xylene
 Concen: 27.155 ug/L
 RT: 12.16 min Scan# 1683
 Delta R.T. -0.00 min
 Lab File: VW014932.D
 Acq: 10 Feb 2020 10:14

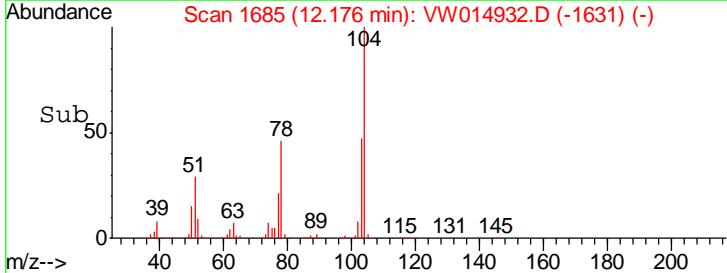
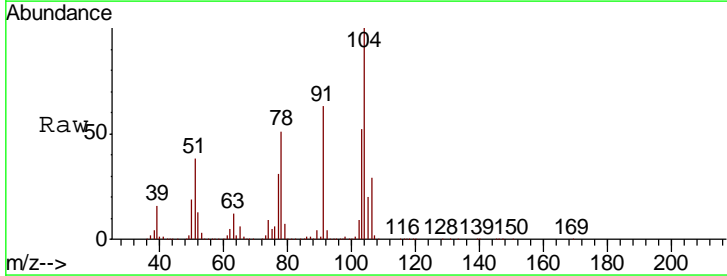
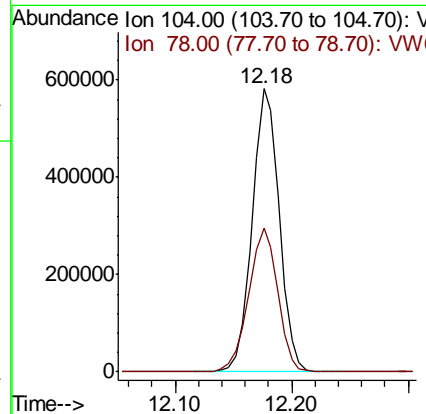
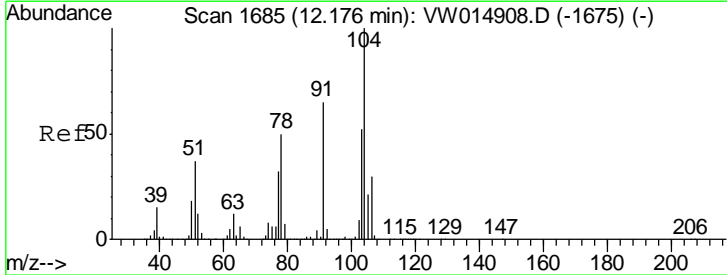
Instrument : MSVOA_W
 ClientSampled :

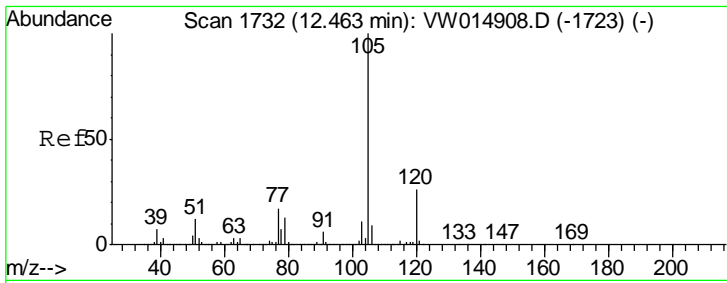
Tgt Ion	Resp	Lower	Upper
106	545956		
106	100		
91	221.8	155.0	287.9



#56
 Styrene
 Concen: 27.710 ug/L
 RT: 12.18 min Scan# 1685
 Delta R.T. -0.00 min
 Lab File: VW014932.D
 Acq: 10 Feb 2020 10:14

Tgt Ion	Resp	Lower	Upper
104	941594		
104	100		
78	50.9	33.8	62.8

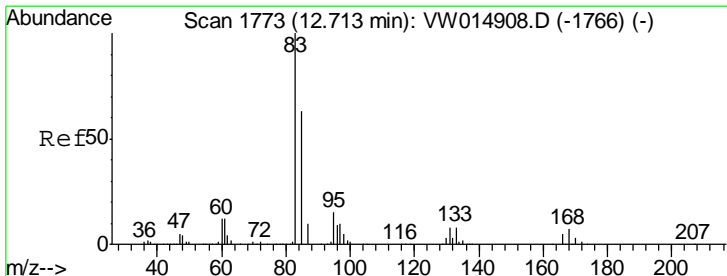
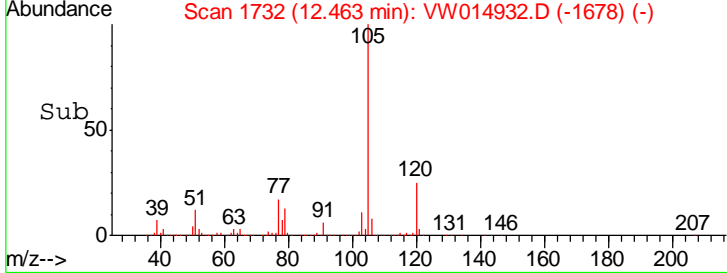
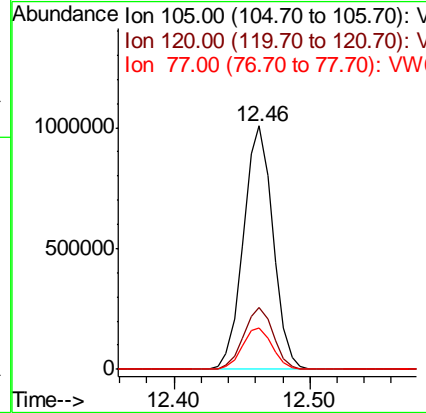
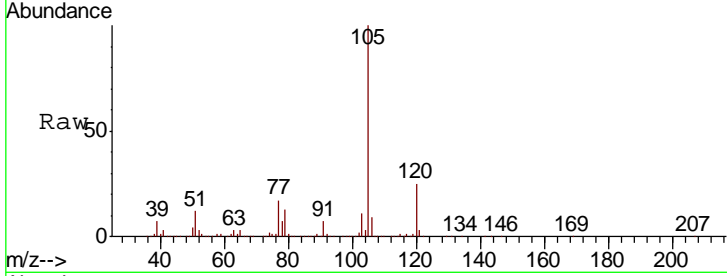




#57
 Isopropylbenzene
 Concen: 28.334 ug/L
 RT: 12.46 min Scan# 1732
 Delta R.T. -0.00 min
 Lab File: VW014932.D
 Acq: 10 Feb 2020 10:14

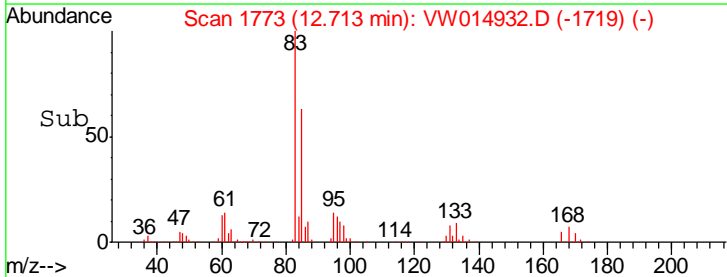
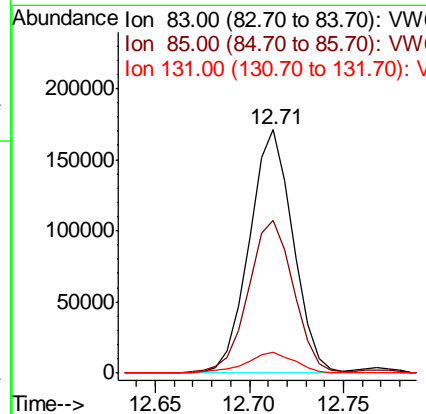
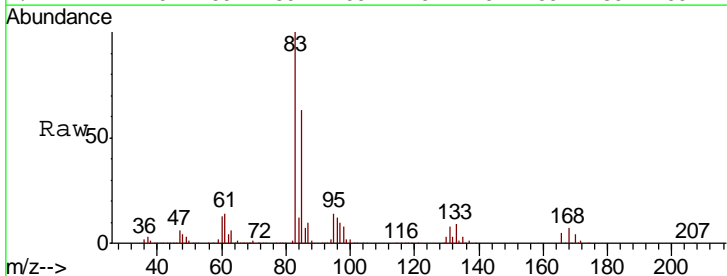
Instrument :
 MSVOA_W
 ClientSampled :

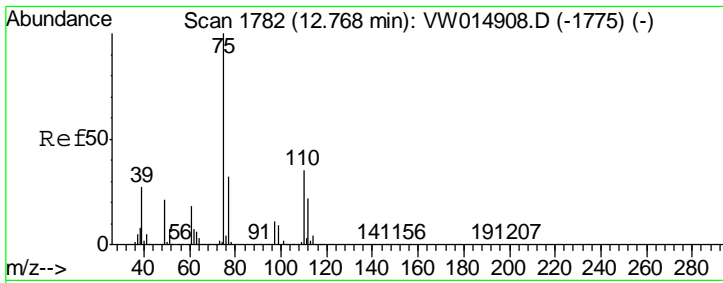
Tgt Ion	Resp	Lower	Upper
105	1529937		
105	100		
120	25.3	20.4	30.6
77	17.3	13.1	19.7



#58
 1,1,2,2-Tetrachloroethane
 Concen: 23.948 ug/L
 RT: 12.71 min Scan# 1773
 Delta R.T. -0.00 min
 Lab File: VW014932.D
 Acq: 10 Feb 2020 10:14

Tgt Ion	Resp	Lower	Upper
83	274225		
83	100		
85	62.7	45.9	85.3
131	8.5	7.3	10.9

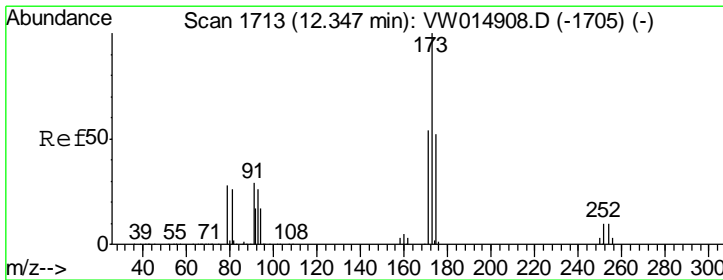
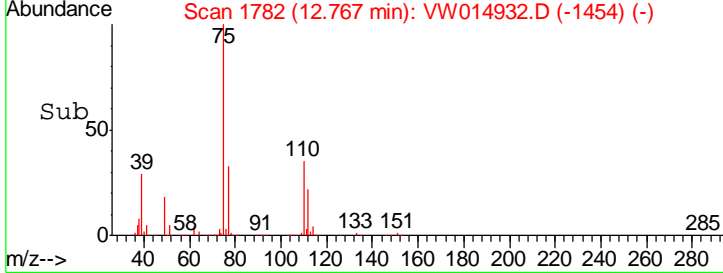
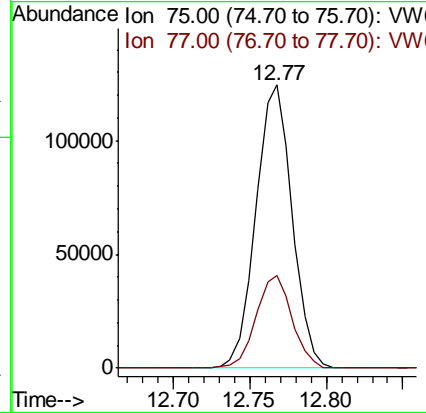
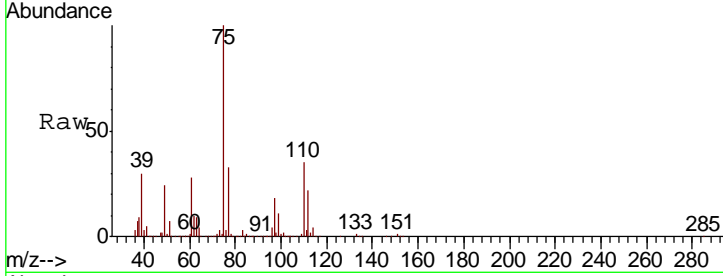




#59
 1,2,3-Trichloropropane
 Concen: 23.815 ug/L
 RT: 12.77 min Scan# 1782
 Delta R.T. -0.00 min
 Lab File: VW014932.D
 Acq: 10 Feb 2020 10:14

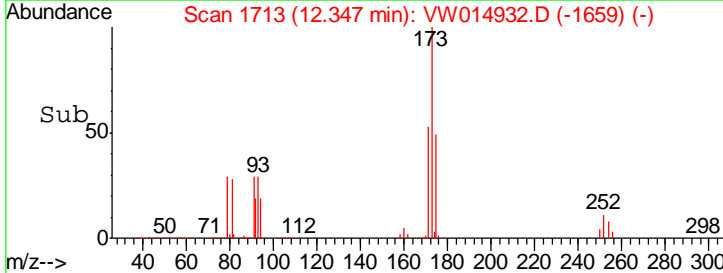
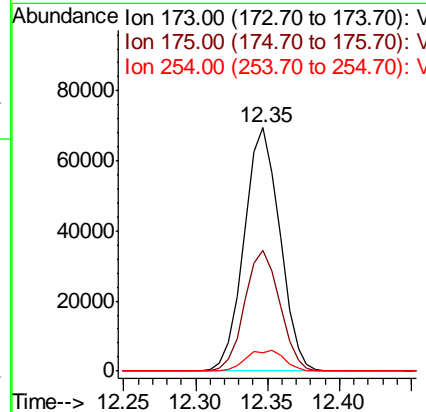
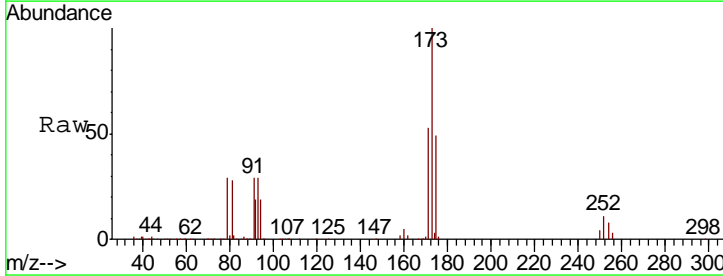
Instrument :
 MSVOA_W
 ClientSampled :

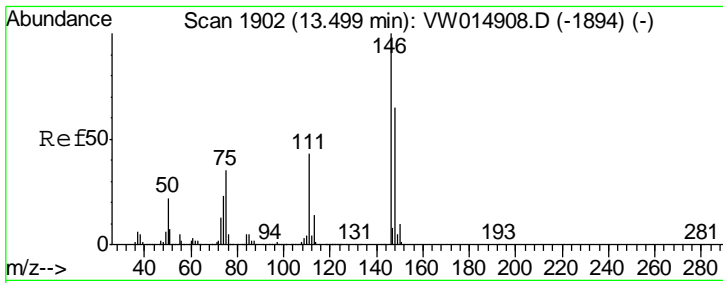
Tgt Ion	Resp	Lower	Upper
75	205162		
77	32.1	25.9	38.9



#62
 Bromoform
 Concen: 22.806 ug/L
 RT: 12.35 min Scan# 1713
 Delta R.T. -0.00 min
 Lab File: VW014932.D
 Acq: 10 Feb 2020 10:14

Tgt Ion	Resp	Lower	Upper
173	119406		
175	48.7	38.9	58.3
254	9.3	7.8	11.8

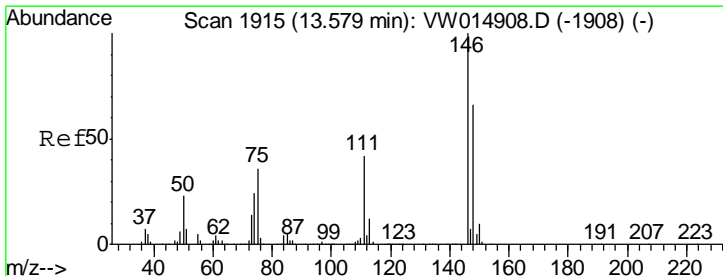
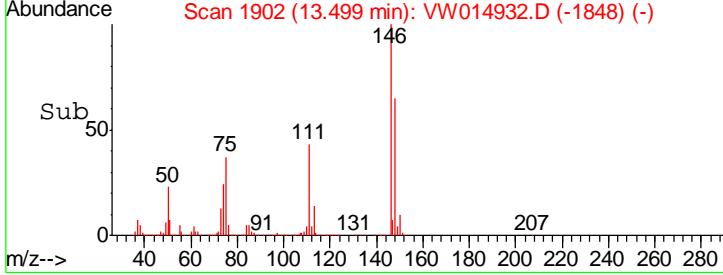
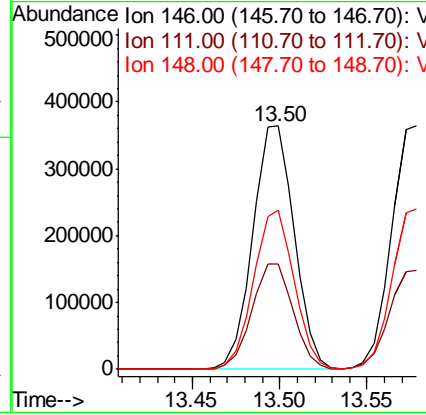
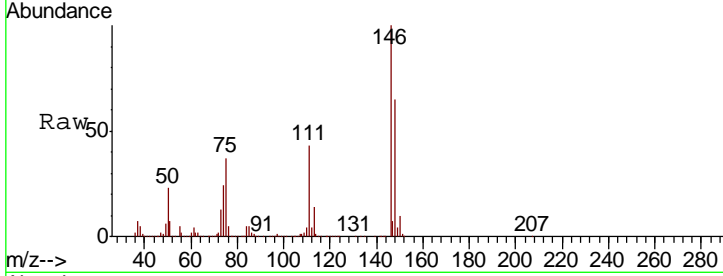




#63
 1,3-Dichlorobenzene
 Concen: 25.881 ug/L
 RT: 13.50 min Scan# 1902
 Delta R.T. -0.00 min
 Lab File: VW014932.D
 Acq: 10 Feb 2020 10:14

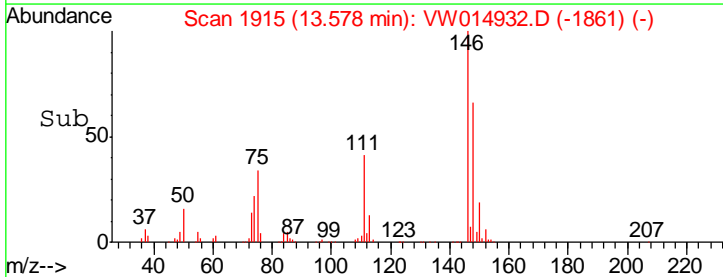
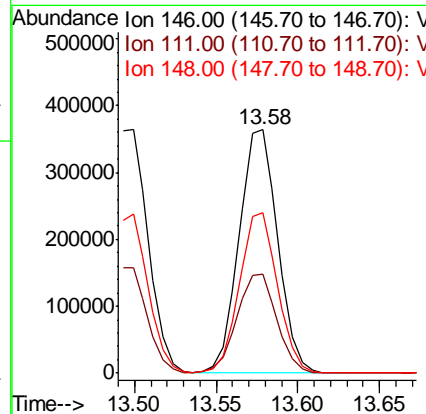
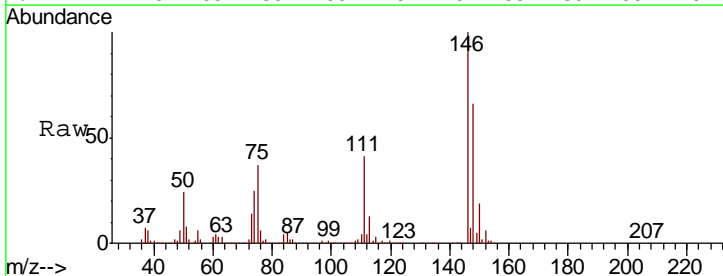
Instrument :
 MSVOA_W
 Client Sampled :

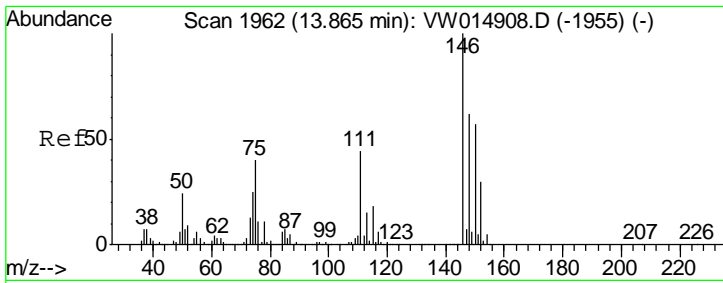
Tgt Ion	Resp	Lower	Upper
146	100		
111	43.3	28.6	53.0
148	65.5	43.3	80.5



#64
 1,4-Dichlorobenzene
 Concen: 25.546 ug/L
 RT: 13.58 min Scan# 1915
 Delta R.T. -0.00 min
 Lab File: VW014932.D
 Acq: 10 Feb 2020 10:14

Tgt Ion	Resp	Lower	Upper
146	100		
111	40.7	27.9	51.7
148	65.7	44.0	81.8

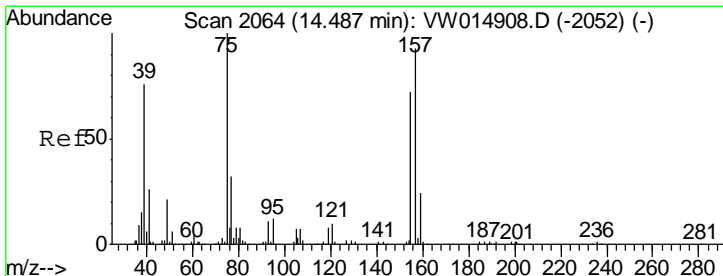
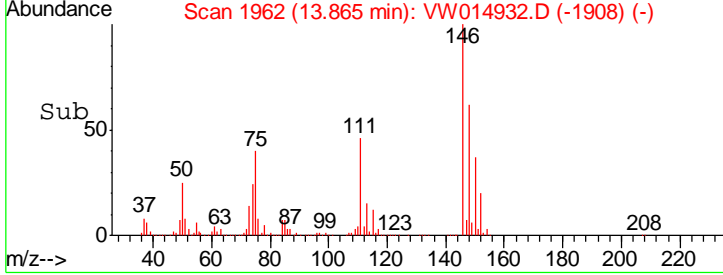
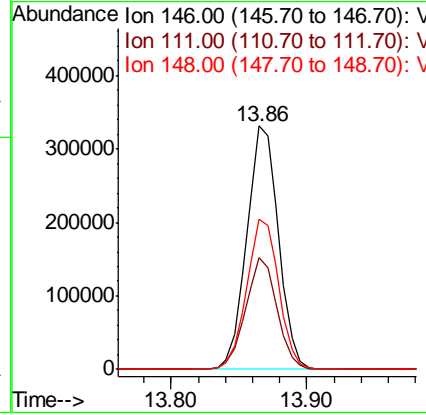
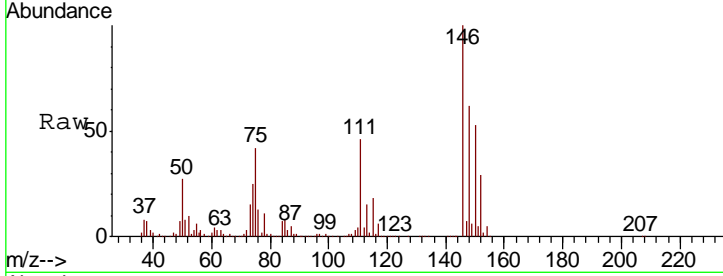




#65
 1,2-Dichlorobenzene
 Concen: 25.415 ug/L
 RT: 13.86 min Scan# 1962
 Delta R.T. -0.00 min
 Lab File: VW014932.D
 Acq: 10 Feb 2020 10:14

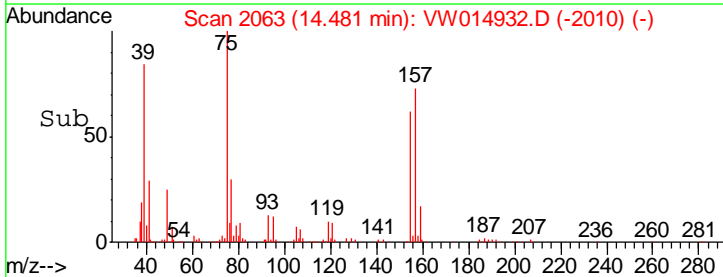
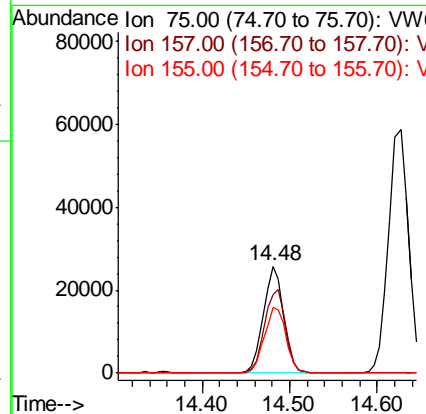
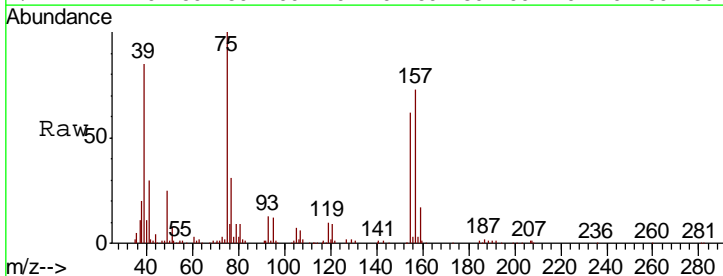
Instrument :
 MSVOA_W
 ClientSampled :

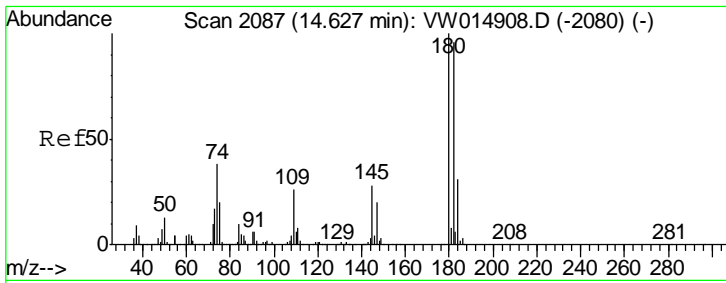
Tgt Ion	Resp	Lower	Upper
146	100		
111	46.1	35.0	52.6
148	61.6	51.1	76.7



#66
 1,2-Dibromo-3-chloropropane
 Concen: 23.015 ug/L
 RT: 14.48 min Scan# 2063
 Delta R.T. -0.01 min
 Lab File: VW014932.D
 Acq: 10 Feb 2020 10:14

Tgt Ion	Resp	Lower	Upper
75	100		
157	73.5	74.2	111.4#
155	61.9	56.1	84.1

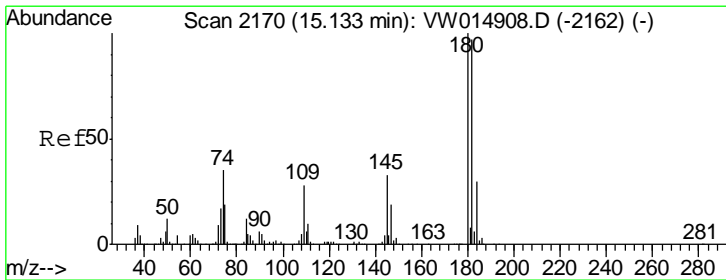
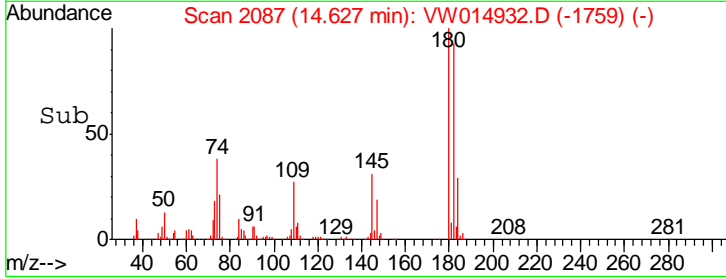
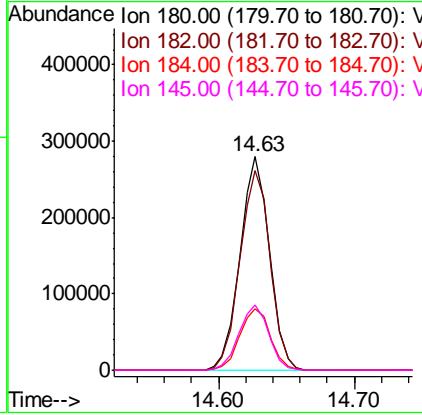
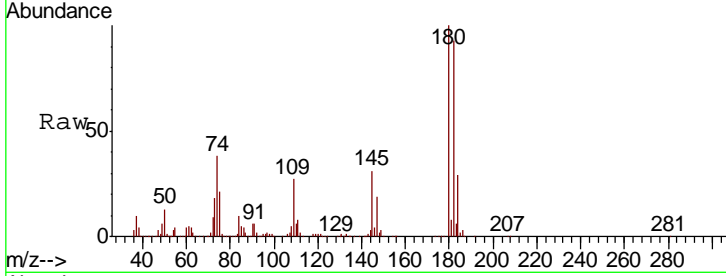




#67
 1,3,5-Trichlorobenzene
 Concen: 25.480 ug/L
 RT: 14.63 min Scan# 2087
 Delta R.T. -0.00 min
 Lab File: VW014932.D
 Acq: 10 Feb 2020 10:14

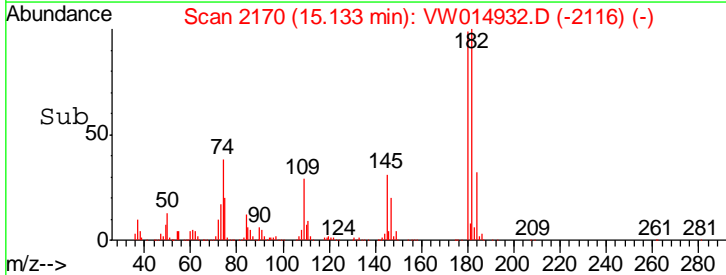
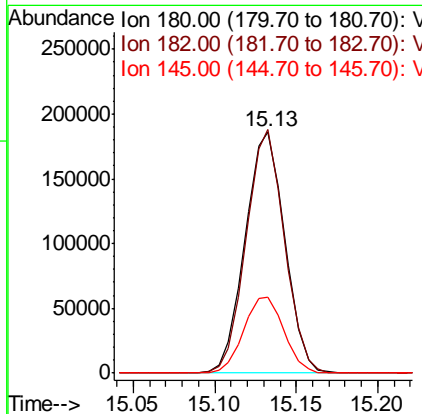
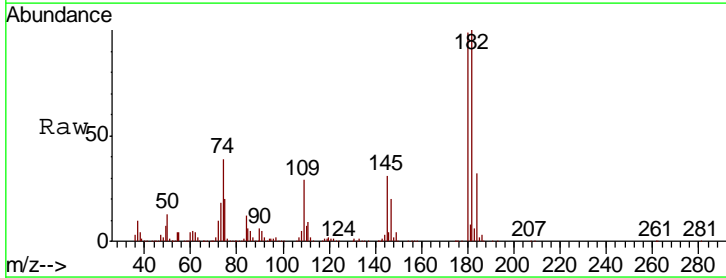
Instrument :
 MSVOA_W
 ClientSampled :

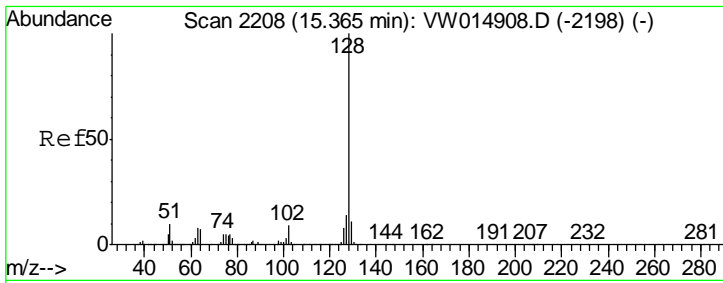
Tgt Ion	Resp	Lower	Upper
180	423382		
182	95.4	75.5	113.3
184	29.9	24.6	36.8
145	30.9	23.7	35.5



#68
 1,2,4-trichlorobenzene
 Concen: 23.954 ug/L
 RT: 15.13 min Scan# 2170
 Delta R.T. -0.00 min
 Lab File: VW014932.D
 Acq: 10 Feb 2020 10:14

Tgt Ion	Resp	Lower	Upper
180	314482		
182	97.5	76.4	114.6
145	32.0	24.6	37.0

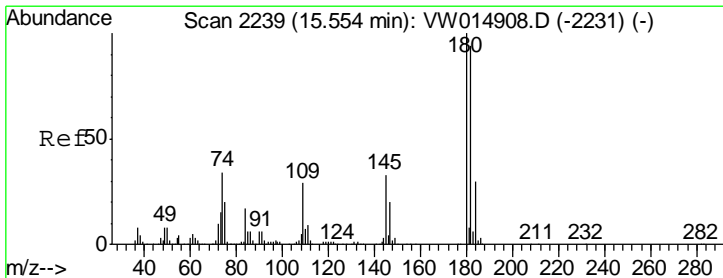
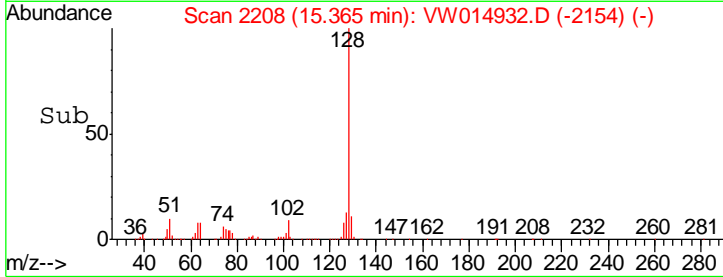
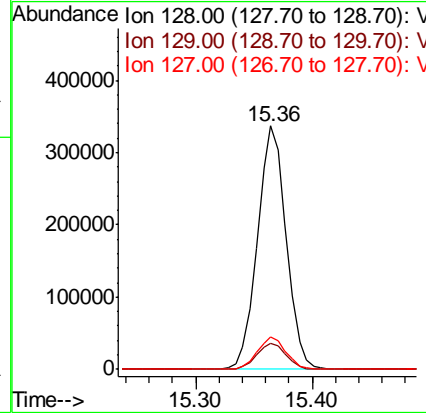
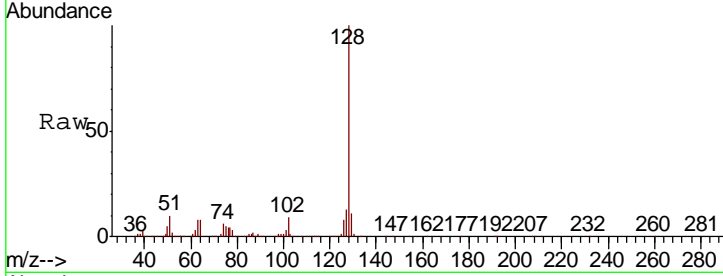




#69
 Naphthalene
 Concen: 22.292 ug/L
 RT: 15.36 min Scan# 2208
 Delta R.T. -0.00 min
 Lab File: VW014932.D
 Acq: 10 Feb 2020 10:14

Instrument :
 MSVOA_W
 ClientSampled :

Tgt Ion	Resp	Lower	Upper
128	100		
129	11.0	8.7	13.1
127	13.3	10.5	15.7



#70
 1,2,3-Trichlorobenzene
 Concen: 23.663 ug/L
 RT: 15.55 min Scan# 2239
 Delta R.T. -0.00 min
 Lab File: VW014932.D
 Acq: 10 Feb 2020 10:14

Tgt Ion	Resp	Lower	Upper
180	100		
182	94.6	75.3	112.9
145	33.4	26.0	39.0

