

Data Path : Z:\VOASRV\HPCHEM1\MSVOA W\DATA\VW021020\  
 Data File : VW014946.D  
 Acq On : 10 Feb 2020 16:45  
 Operator : SY/VA  
 Sample : L1416-03  
 Misc : 4.59G/10ML/MSVOA W/SOIL  
 ALS Vial : 1 Sample Multiplier: 1

Instrument :  
 MSVOA\_W  
 ClientSampleId :

Quant Time: Feb 11 00:34:38 2020  
 Quant Method : Z:\VOASRV\HPCHEM1\MSVOA\_W\METHOD\SOM2WLM020520S.M  
 Quant Title : VOC Analysis  
 QLast Update : Tue Feb 11 00:31:29 2020  
 Response via : Initial Calibration

Internal Standards	R.T.	QIon	Response	Conc	Units	Dev(Min)
1) 1,4-Difluorobenzene	8.84	114	853016	25.00	ug/L	0.00
28) Chlorobenzene-d5	11.63	117	782693	25.00	ug/L	0.00
60) 1,4-Dichlorobenzene-d4	13.55	152	292566	25.00	ug/L	0.00

System Monitoring Compounds

4) Vinyl Chloride-d3	2.35	65	249613	17.68	ug/L	0.00
Spiked Amount	25.000	Range	30 - 150	Recovery	=	70.72%
7) Chloroethane-d5	2.89	69	247653	21.90	ug/L	0.00
Spiked Amount	25.000	Range	30 - 150	Recovery	=	87.60%
10) 1,1-Dichloroethene-d2	4.01	63	408428	15.83	ug/L	0.00
Spiked Amount	25.000	Range	45 - 110	Recovery	=	63.32%
20) 2-Butanone-d5	7.07	46	173094	43.68	ug/L	0.00
Spiked Amount	50.000	Range	20 - 135	Recovery	=	87.36%
24) Chloroform-d	7.75	84	304	0.01	ug/L	0.10
Spiked Amount	25.000	Range	40 - 150	Recovery	=	0.04%#
26) 1,2-Dichloroethane-d4	8.31	65	341141	25.45	ug/L	0.00
Spiked Amount	25.000	Range	70 - 130	Recovery	=	101.80%
29) Benzene-d6	8.27	84	1160460	23.06	ug/L	0.00
Spiked Amount	25.000	Range	20 - 135	Recovery	=	92.24%
33) 1,2-Dichloropropane-d6	9.27	67	418044	25.49	ug/L	0.00
Spiked Amount	25.000	Range	70 - 120	Recovery	=	101.96%
37) Toluene-d8	10.32	98	974727	22.00	ug/L	0.00
Spiked Amount	25.000	Range	30 - 130	Recovery	=	88.00%
38) trans-1,3-Dichloropropene-	10.58	79	128070	19.77	ug/L	0.00
Spiked Amount	25.000	Range	30 - 135	Recovery	=	79.08%
39) 2-Hexanone-d5	10.92	63	116922	39.11	ug/L	0.00
Spiked Amount	50.000	Range	20 - 135	Recovery	=	78.22%
48) 1,1,2,2-Tetrachloroethane-	12.69	84	265084	21.46	ug/L	0.00
Spiked Amount	25.000	Range	45 - 120	Recovery	=	85.84%
61) 1,2-Dichlorobenzene-d4	13.85	152	276236	24.35	ug/L	0.00
Spiked Amount	25.000	Range	75 - 120	Recovery	=	97.40%

Target Compounds

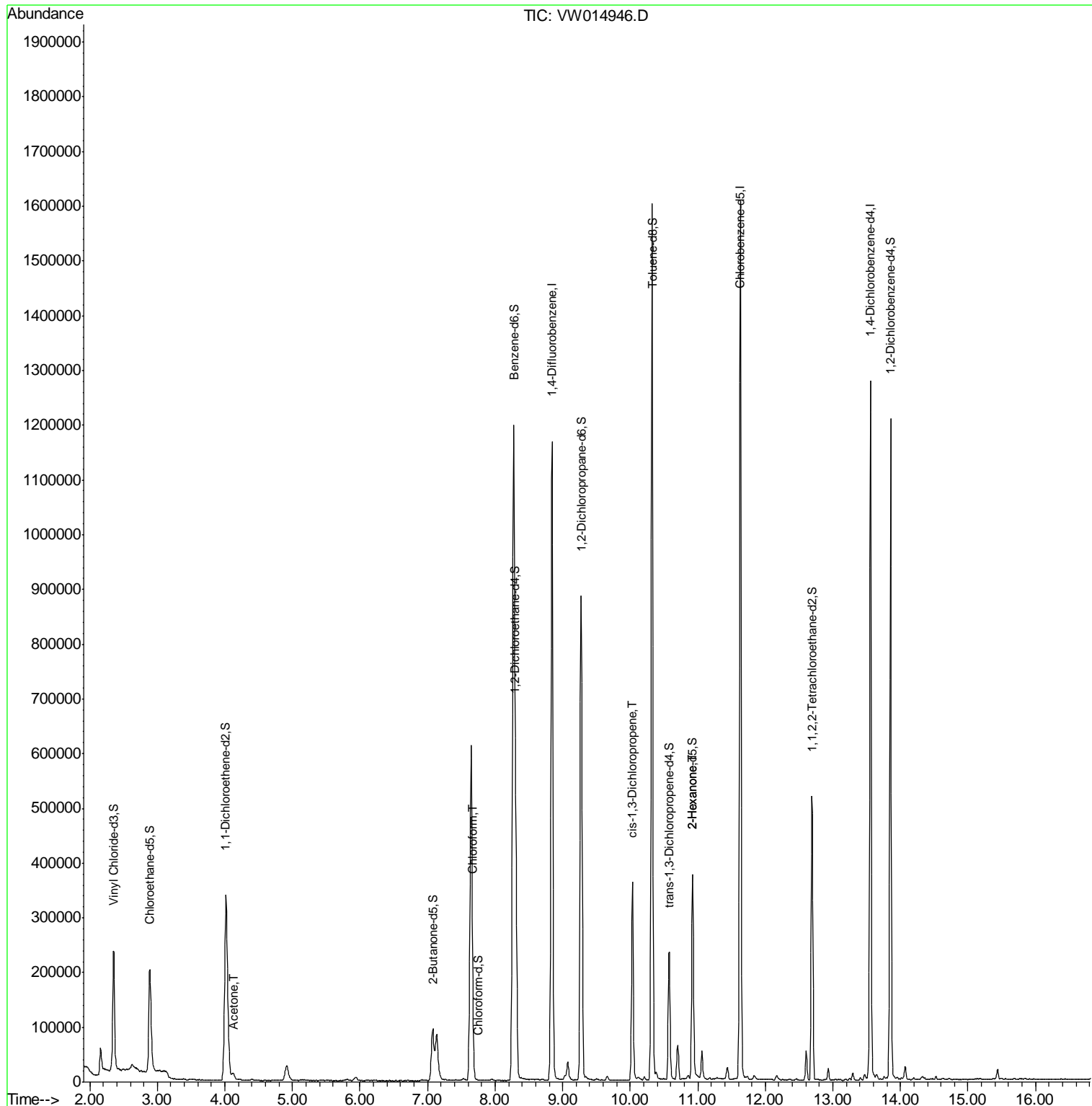
					Ovalue
13) Acetone	4.13	43	20859	5.099	ug/L 75
25) Chloroform	7.67	83	10876	0.477	ug/L # 23
42) cis-1,3-Dichloropropene	10.04	75	9133	0.447	ug/L # 71
49) 2-Hexanone	10.92	43	17304	2.608	ug/L # 67

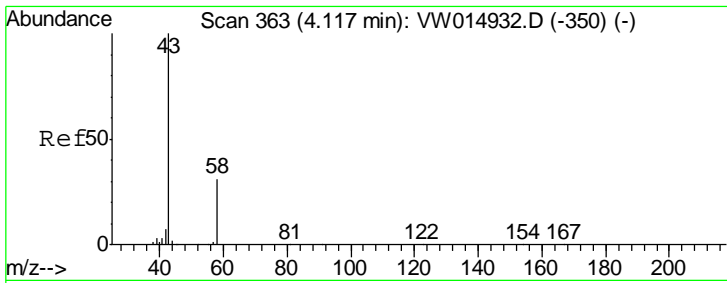
(#) = qualifier out of range (m) = manual integration (+) = signals summed

Data Path : Z:\VOASRV\HPCHEM1\MSVOA W\DATA\VW021020\  
 Data File : VW014946.D  
 Acq On : 10 Feb 2020 16:45  
 Operator : SY/VA  
 Sample : L1416-03  
 Misc : 4.59G/10ML/MSVOA W/SOIL  
 ALS Vial : 1 Sample Multiplier: 1

Instrument :  
 MSVOA\_W  
 ClientSampleId :

Quant Time: Feb 11 00:34:38 2020  
 Quant Method : Z:\VOASRV\HPCHEM1\MSVOA\_W\METHOD\SOM2WLM020520S.M  
 Quant Title : VOC Analysis  
 QLast Update : Tue Feb 11 00:31:29 2020  
 Response via : Initial Calibration



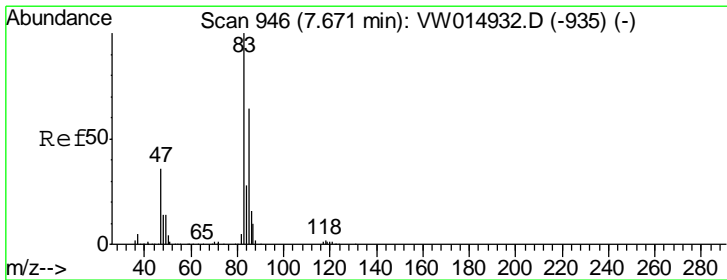
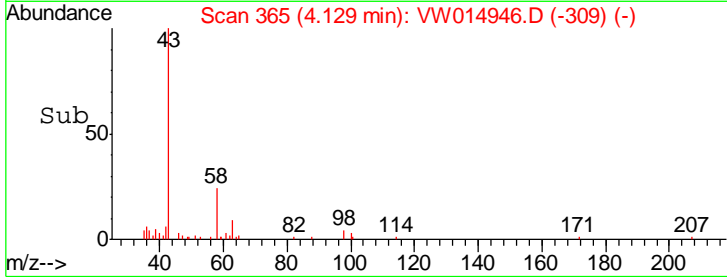
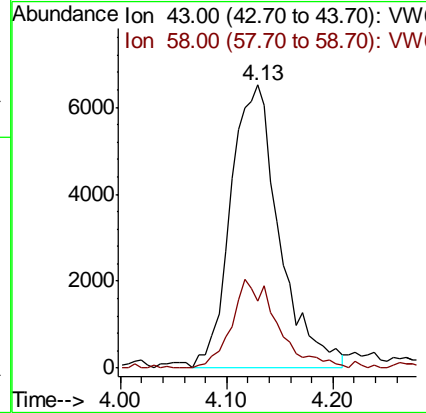
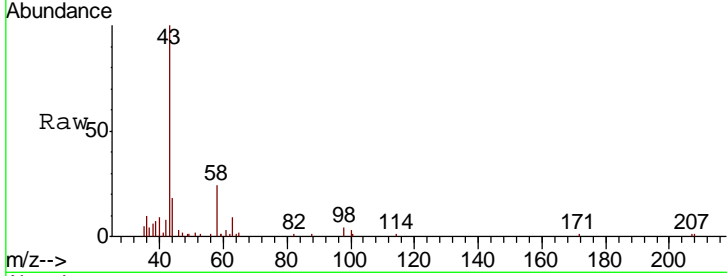


#13  
 Acetone  
 Concen: 5.099 ug/L  
 RT: 4.13 min Scan# 365  
 Delta R.T. 0.01 min  
 Lab File: VW014946.D  
 Acq: 10 Feb 2020 16:45

Instrument : MSVOA\_W  
 ClientSampled :

Tgt Ion: 43 Resp: 20859

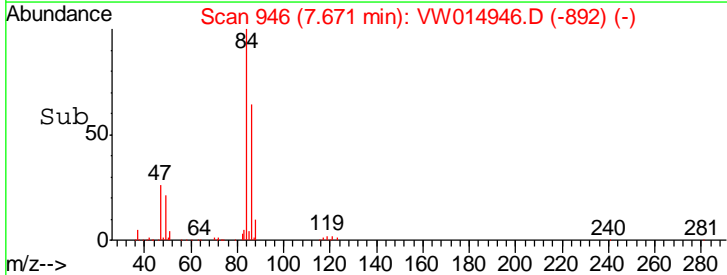
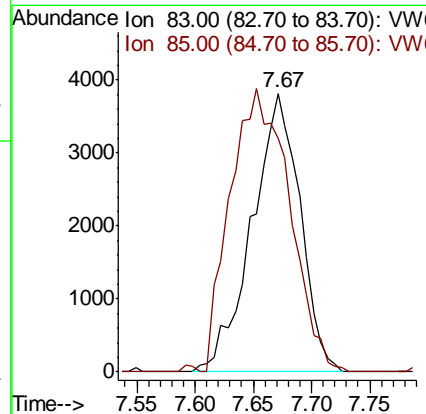
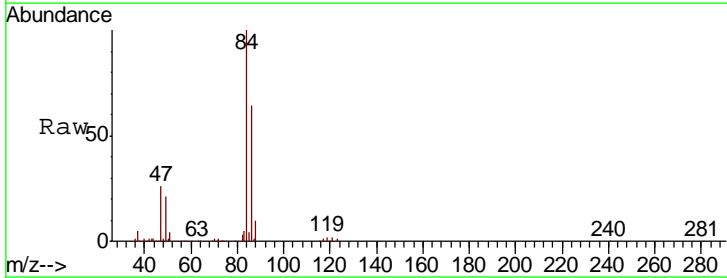
Ion	Ratio	Lower	Upper
43	100		
58	16.7	0.0	60.4

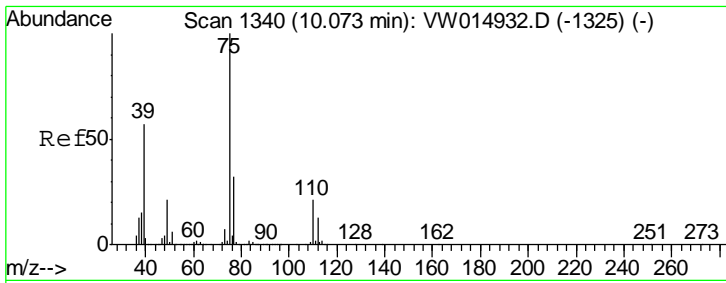


#25  
 Chloroform  
 Concen: 0.477 ug/L  
 RT: 7.67 min Scan# 946  
 Delta R.T. 0.00 min  
 Lab File: VW014946.D  
 Acq: 10 Feb 2020 16:45

Tgt Ion: 83 Resp: 10876

Ion	Ratio	Lower	Upper
83	100		
85	125.9	45.4	84.4#

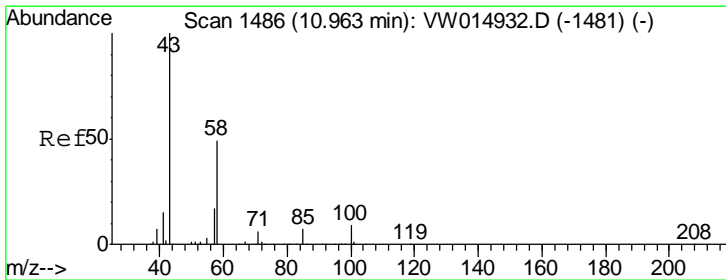
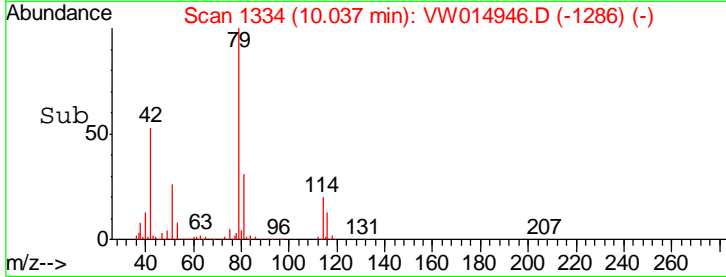
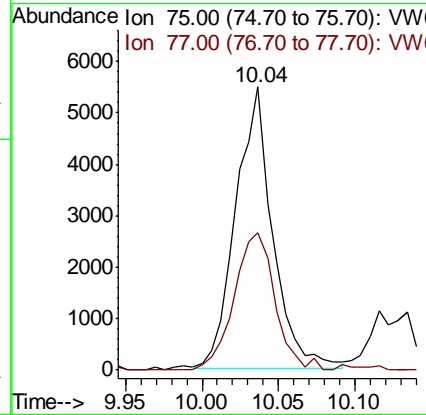
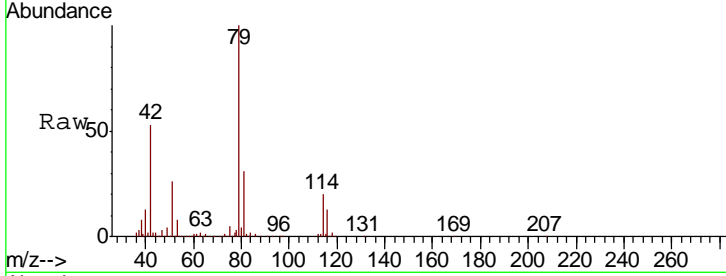




#42  
 cis-1,3-Dichloropropene  
 Concen: 0.447 ug/L  
 RT: 10.04 min Scan# 1334  
 Delta R.T. -0.04 min  
 Lab File: VW014946.D  
 Acq: 10 Feb 2020 16:45

Instrument :  
 MSVOA\_W  
 ClientSampled :

Tgt Ion: 75 Resp: 9133  
 Ion Ratio Lower Upper  
 75 100  
 77 48.4 22.5 41.9#



#49  
 2-Hexanone  
 Concen: 2.608 ug/L  
 RT: 10.92 min Scan# 1479  
 Delta R.T. -0.04 min  
 Lab File: VW014946.D  
 Acq: 10 Feb 2020 16:45

Tgt Ion: 43 Resp: 17304  
 Ion Ratio Lower Upper  
 43 100  
 58 28.2 42.2 63.2#  
 57 33.2 14.5 21.7#  
 100 2.3 8.6 12.8#

