

Data Path : Z:\VOASRV\HPCHEM1\MSVOA W\DATA\VW021020\  
 Data File : VW014947.D  
 Acq On : 10 Feb 2020 17:11  
 Operator : SY/VA  
 Sample : L1416-04  
 Misc : 4.62G/10ML/MSVOA W/SOIL  
 ALS Vial : 1 Sample Multiplier: 1

Instrument :  
 MSVOA\_W  
 ClientSampleId :  
 F3S32

Integration Parameters: LSCINT.P

Integrator: RTE  
 Smoothing : OFF  
 Sampling : 1  
 Start Thrs: 0.2  
 Stop Thrs : 0

Filtering: 5  
 Min Area: 0 % of largest Peak  
 Max Peaks: 100  
 Peak Location: TOP

If leading or trailing edge < 100 prefer < Baseline drop else tangent >  
 Peak separation: 5

Method : Z:\VOASRV\HPCHEM1\MSVOA\_W\METHOD\SOM2WLM020520S.M  
 Title : VOC Analysis

Signal : TIC

peak #	R.T. min	first scan	max scan	last scan	PK TY	peak height	corr. area	corr. % max.	% of total
1	2.160	37	42	48	rBV	37600	73802	2.67%	0.361%
2	2.355	68	74	84	rVB	170177	322073	11.63%	1.577%
3	2.885	155	161	173	rBV	144044	354751	12.81%	1.737%
4	3.702	292	295	298	rBV5	1217	1448	0.05%	0.007%
5	4.013	335	346	360	rBV	262243	832255	30.06%	4.075%
6	4.318	392	396	398	rBV4	901	1196	0.04%	0.006%
7	4.373	402	405	407	rBV3	2165	2546	0.09%	0.012%
8	4.708	455	460	462	rVV3	990	1381	0.05%	0.007%
9	4.909	482	493	513	rVB2	35033	126881	4.58%	0.621%
10	5.141	527	531	532	rBV3	951	1349	0.05%	0.007%
11	5.336	559	563	566	rVB5	920	1555	0.06%	0.008%
12	5.403	572	574	576	rBV2	910	1033	0.04%	0.005%
13	5.610	606	608	611	rBV3	1221	1325	0.05%	0.006%
14	5.671	615	618	620	rBV3	1011	1075	0.04%	0.005%
15	5.751	628	631	632	rBV2	912	1042	0.04%	0.005%
16	5.775	632	635	636	rBV3	840	1046	0.04%	0.005%
17	5.934	653	661	670	rVV7	7074	20931	0.76%	0.102%
18	6.031	674	677	680	rVB4	876	926	0.03%	0.005%
19	6.275	716	717	721	rVB3	807	997	0.04%	0.005%
20	6.537	759	760	764	rVB3	1104	936	0.03%	0.005%
21	6.915	820	822	825	rBV3	1260	1466	0.05%	0.007%
22	7.080	839	849	853	rBV2	75038	203513	7.35%	0.996%
23	7.135	854	858	874	rVB2	87349	232426	8.39%	1.138%
24	7.281	881	882	885	rVB3	1041	992	0.04%	0.005%
25	7.342	889	892	896	rVB5	1013	1180	0.04%	0.006%
26	7.421	902	905	906	rBV3	1102	1253	0.05%	0.006%
27	7.439	906	908	911	rVB4	1088	1057	0.04%	0.005%
28	7.531	917	923	924	rBV5	1740	2747	0.10%	0.013%
29	7.647	932	942	956	rBV	480663	1177212	42.51%	5.764%
30	7.799	963	967	968	rVB4	970	1089	0.04%	0.005%
31	7.872	974	979	980	rBV3	1721	2773	0.10%	0.014%
32	8.061	1008	1010	1014	rVB4	1587	2416	0.09%	0.012%
33	8.183	1026	1030	1032	rBV4	1049	1351	0.05%	0.007%
34	8.275	1032	1045	1060	rBV2	940979	2769021	100.00%	13.558%

Data Path : Z:\VOASRV\HPCHEM1\MSVOA W\DATA\VW021020\  
 Data File : VW014947.D  
 Acq On : 10 Feb 2020 17:11  
 Operator : SY/VA  
 Sample : L1416-04  
 Misc : 4.62G/10ML/MSVOA W/SOIL  
 ALS Vial : 1 Sample Multiplier: 1

Instrument :  
 MSVOA\_W  
 ClientSampleId :  
 F3S32

## Integration Parameters: LSCINT.P

Integrator: RTE  
 Smoothing : OFF  
 Sampling : 1  
 Start Thrs: 0.2  
 Stop Thrs : 0

Filtering: 5  
 Min Area: 0 % of largest Peak  
 Max Peaks: 100  
 Peak Location: TOP

If leading or trailing edge < 100 prefer < Baseline drop else tangent >  
 Peak separation: 5

Method : Z:\VOASRV\HPCHEM1\MSVOA\_W\METHOD\SOM2WLM020520S.M  
 Title : VOC Analysis

35	8.616	1099	1101	1106	rVB4	1301	1826	0.07%	0.009%
36	8.695	1109	1114	1119	rBV7	2392	5073	0.18%	0.025%
37	8.842	1129	1138	1148	rBV	1079554	2111198	76.24%	10.337%
38	9.079	1169	1177	1183	rBV2	26232	54780	1.98%	0.268%
39	9.201	1194	1197	1200	rBV4	1006	1410	0.05%	0.007%
40	9.274	1200	1209	1222	rBV	695401	1422900	51.39%	6.967%
41	9.616	1261	1265	1267	rBV4	1164	1651	0.06%	0.008%
42	9.659	1267	1272	1283	rVB4	6011	13178	0.48%	0.065%
43	9.890	1308	1310	1315	rVB5	2676	3626	0.13%	0.018%
44	10.030	1322	1333	1343	rBV	281272	528963	19.10%	2.590%
45	10.213	1357	1363	1368	rBV2	6680	12445	0.45%	0.061%
46	10.323	1373	1381	1389	rBV	1198631	2085311	75.31%	10.210%
47	10.579	1413	1423	1433	rBV	182615	329320	11.89%	1.612%
48	10.701	1437	1443	1451	rBV	61150	115267	4.16%	0.564%
49	10.860	1465	1469	1474	rVB6	6787	10755	0.39%	0.053%
50	10.920	1474	1479	1496	rVV	282021	505446	18.25%	2.475%
51	11.061	1496	1502	1510	rVB	51414	85696	3.09%	0.420%
52	11.122	1510	1512	1515	rBV4	1601	1532	0.06%	0.008%
53	11.170	1517	1520	1528	rVB9	3565	6502	0.23%	0.032%
54	11.274	1535	1537	1538	rBV3	1551	1119	0.04%	0.005%
55	11.433	1559	1563	1571	rVB2	24365	42875	1.55%	0.210%
56	11.524	1573	1578	1579	rBV4	1689	2734	0.10%	0.013%
57	11.628	1588	1595	1606	rBV	1487910	2529954	91.37%	12.387%
58	11.835	1625	1629	1635	rVB6	5745	8918	0.32%	0.044%
59	11.914	1640	1642	1643	rBV2	1432	1254	0.05%	0.006%
60	12.067	1664	1667	1669	rBV3	1122	1239	0.04%	0.006%
61	12.164	1678	1683	1692	rVB6	7260	16866	0.61%	0.083%
62	12.335	1708	1711	1712	rBV3	1273	1102	0.04%	0.005%
63	12.463	1725	1732	1739	rVB9	3273	9092	0.33%	0.045%
64	12.536	1739	1744	1745	rBV3	1678	2372	0.09%	0.012%
65	12.603	1747	1755	1761	rVV	60523	109503	3.95%	0.536%
66	12.688	1762	1769	1778	rVV	414601	681163	24.60%	3.335%
67	12.762	1778	1781	1783	rVV4	1770	1956	0.07%	0.010%
68	12.786	1783	1785	1791	rVB6	2157	3268	0.12%	0.016%
69	12.871	1796	1799	1801	rBV2	1028	1344	0.05%	0.007%
70	12.932	1804	1809	1815	rVB2	22889	36094	1.30%	0.177%
71	12.993	1817	1819	1821	rVB2	1091	959	0.03%	0.005%

Data Path : Z:\VOASRV\HPCHEM1\MSVOA W\DATA\VW021020\  
 Data File : VW014947.D  
 Acq On : 10 Feb 2020 17:11  
 Operator : SY/VA  
 Sample : L1416-04  
 Misc : 4.62G/10ML/MSVOA W/SOIL  
 ALS Vial : 1 Sample Multiplier: 1

Instrument :  
 MSVOA\_W  
 ClientSampleId :  
 F3S32

Integration Parameters: LSCINT.P

Integrator: RTE  
 Smoothing : OFF Filtering: 5  
 Sampling : 1 Min Area: 0 % of largest Peak  
 Start Thrs: 0.2 Max Peaks: 100  
 Stop Thrs : 0 Peak Location: TOP

If leading or trailing edge < 100 prefer < Baseline drop else tangent >  
 Peak separation: 5

Method : Z:\VOASRV\HPCHEM1\MSVOA\_W\METHOD\SOM2WLM020520S.M  
 Title : VOC Analysis

72	13.036	1821	1826	1829	rVB6	2186	3728	0.13%	0.018%
73	13.079	1829	1833	1836	rBV5	2398	4211	0.15%	0.021%
74	13.109	1836	1838	1844	rVB7	1763	2702	0.10%	0.013%
75	13.201	1849	1853	1857	rVB7	2023	3021	0.11%	0.015%
76	13.243	1857	1860	1863	rBV5	1835	2659	0.10%	0.013%
77	13.292	1863	1868	1875	rVB3	14228	25259	0.91%	0.124%
78	13.402	1881	1886	1891	rVB4	4221	7488	0.27%	0.037%
79	13.463	1892	1896	1900	rBV4	9953	16669	0.60%	0.082%
80	13.554	1904	1911	1923	rBV	1154929	1869744	67.52%	9.155%
81	13.761	1941	1945	1948	rBV5	5022	7047	0.25%	0.035%
82	13.853	1953	1960	1967	rBV	895827	1456147	52.59%	7.130%
83	14.011	1984	1986	1989	rBV4	2195	3053	0.11%	0.015%
84	14.066	1991	1995	2001	rVB	29502	46228	1.67%	0.226%
85	14.200	2013	2017	2021	rBV7	2792	5142	0.19%	0.025%
86	14.280	2027	2030	2031	rBV3	1046	962	0.03%	0.005%
87	14.310	2031	2035	2036	rBV3	3140	4560	0.16%	0.022%
88	14.322	2036	2037	2041	rVB4	3462	3605	0.13%	0.018%
89	14.463	2057	2060	2063	rBV5	1400	2052	0.07%	0.010%
90	14.578	2077	2079	2082	rVB4	1782	1729	0.06%	0.008%
91	14.719	2097	2102	2106	rBV7	3224	5395	0.19%	0.026%
92	15.103	2163	2165	2170	rBV6	1269	1991	0.07%	0.010%
93	15.170	2172	2176	2180	rVB7	1541	2942	0.11%	0.014%
94	15.371	2205	2209	2211	rBV5	1183	1351	0.05%	0.007%
95	15.438	2212	2220	2225	rVV	23451	39680	1.43%	0.194%
96	15.487	2225	2228	2232	rBV3	2772	3357	0.12%	0.016%
97	15.798	2277	2279	2283	rVB5	2018	2196	0.08%	0.011%
98	16.035	2317	2318	2321	rBV3	1796	1363	0.05%	0.007%
99	16.621	2410	2414	2415	rBV4	1301	1717	0.06%	0.008%
100	16.749	2431	2435	2438	rBV7	1235	1930	0.07%	0.009%

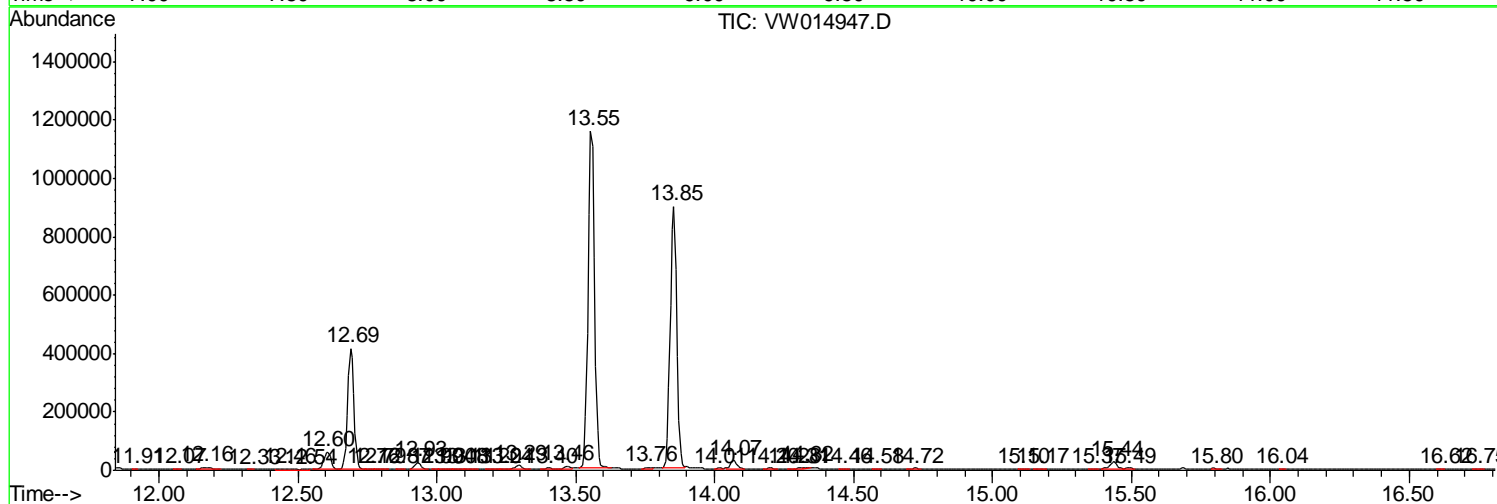
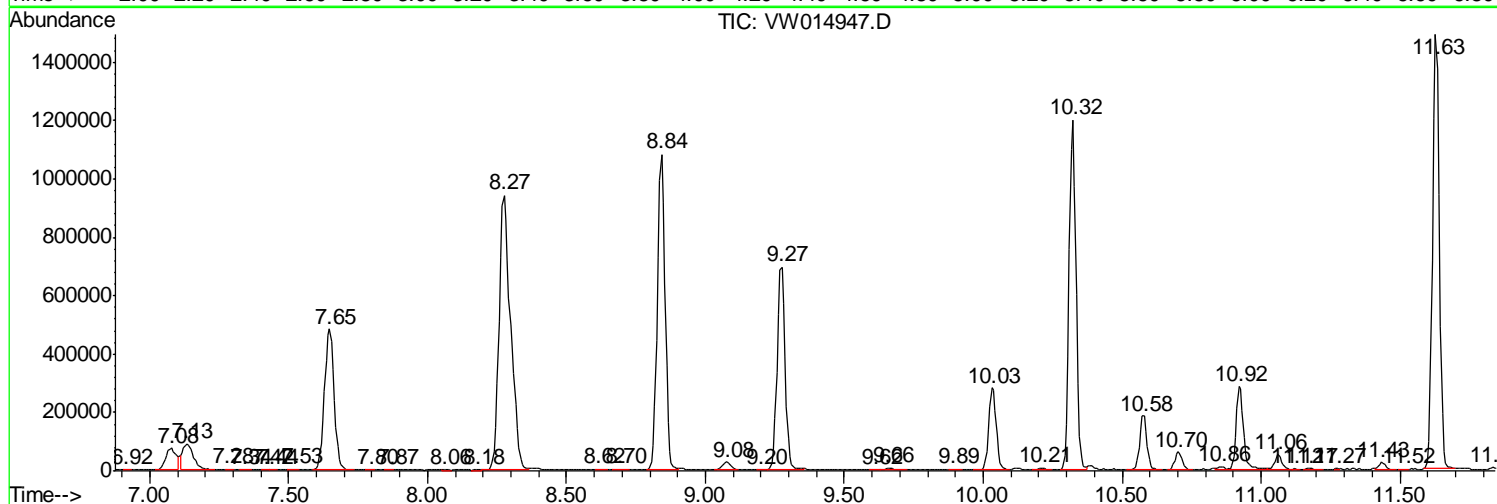
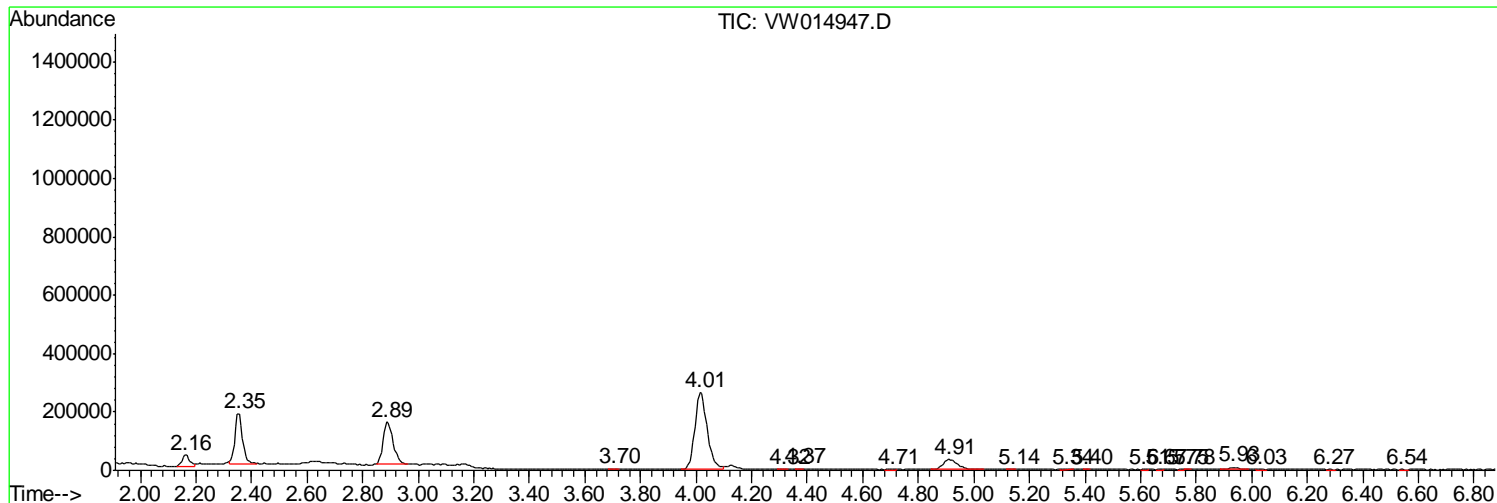
Sum of corrected areas: 20423663

Data Path : Z:\VOASRV\HPCHEM1\MSVOA W\DATA\VW021020\  
 Data File : VW014947.D  
 Acq On : 10 Feb 2020 17:11  
 Operator : SY/VA  
 Sample : L1416-04  
 Misc : 4.62G/10ML/MSVOA W/SOIL  
 ALS Vial : 1 Sample Multiplier: 1

**Instrument :**  
 MSVOA\_W  
**ClientSampled :**  
 F3S32

Quant Method : Z:\VOASRV\HPCHEM1\MSVOA\_W\METHOD\SOM2WLM020520S.M  
 Quant Title : VOC Analysis

TIC Library : C:\DATABASE\NIST11.L  
 TIC Integration Parameters: LSCINT.P



Data Path : Z:\VOASRV\HPCHEM1\MSVOA\_W\DATA\VW021020\  
Data File : VW014947.D  
Acq On : 10 Feb 2020 17:11  
Operator : SY/VA  
Sample : L1416-04  
Misc : 4.62G/10ML/MSVOA\_W/SOIL  
ALS Vial : 1 Sample Multiplier: 1

Instrument :  
MSVOA\_W  
ClientSampleId :  
F3S32

Quant Method : Z:\VOASRV\HPCHEM1\MSVOA\_W\METHOD\SOM2WLM020520S.M  
Quant Title : VOC Analysis

TIC Library : C:\DATABASE\NIST11.L  
TIC Integration Parameters: LSCINT.P

No Library Search Compounds Detected

\*\*\*\*\*

Data Path : Z:\VOASRV\HPCHEM1\MSVOA\_W\DATA\VW021020\  
Data File : VW014947.D  
Acq On : 10 Feb 2020 17:11  
Operator : SY/VA  
Sample : L1416-04  
Misc : 4.62G/10ML/MSVOA\_W/SOIL  
ALS Vial : 1 Sample Multiplier: 1

Instrument :  
MSVOA\_W  
ClientSampleId :  
F3S32

Quant Method : Z:\VOASRV\HPCHEM1\MSVOA\_W\METHOD\SOM2WLM020520S.M  
Quant Title : VOC Analysis

TIC Library : C:\DATABASE\NIST11.L  
TIC Integration Parameters: LSCINT.P

TIC Top Hit name	RT	EstConc	Units	Response	--Internal Standard--			
					#	RT	Resp	Conc

---