

Data Path : Z:\voasrv\HPCHEM1\MSVOA_W\Data\VW021224\
 Data File : VW027991.D
 Acq On : 12 Feb 2024 11:48
 Operator : SY/MD
 Sample : P1442-11
 Misc : 4.80g/10mL/MSVOA_W/SOIL/A
 ALS Vial : 1 Sample Multiplier: 1

Instrument :
 MSVOA_W
 ClientSampleId :
 BH9W0

Integration Parameters: LSCINT.P

Integrator: RTE
 Smoothing : OFF Filtering: 5
 Sampling : 1 Min Area: 0 % of largest Peak
 Start Thrs: 0.2 Max Peaks: 100
 Stop Thrs : 0 Peak Location: TOP

If leading or trailing edge < 100 prefer < Baseline drop else tangent >
 Peak separation: 5

Method : Z:\voasrv\HPCHEM1\MSVOA_W\Method\SFAMWLM020524SMA.M
 Title : SFAM01.0

Signal : TIC: VW027991.D\data.ms

peak #	R.T. min	first scan	max scan	last scan	PK TY	peak height	corr. area	corr. % max.	% of total
1	2.363	72	78	95	rVB	64119	153243	11.93%	1.519%
2	2.899	159	166	186	rVB	57791	156875	12.22%	1.555%
3	3.314	233	234	235	rBV	247	121	0.01%	0.001%
4	3.686	290	295	296	rBV	201	226	0.02%	0.002%
5	3.783	309	311	314	rBV2	184	283	0.02%	0.003%
6	3.875	325	326	329	rBV2	163	158	0.01%	0.002%
7	4.021	339	350	371	rBV	127928	397943	30.99%	3.944%
8	4.423	413	416	417	rBV2	226	205	0.02%	0.002%
9	4.606	444	446	448	rBV3	241	177	0.01%	0.002%
10	4.917	489	497	506	rBV3	3624	11564	0.90%	0.115%
11	5.234	547	549	552	rBV2	83	122	0.01%	0.001%
12	5.326	562	564	568	rBV2	93	135	0.01%	0.001%
13	5.368	570	571	574	rBV	200	122	0.01%	0.001%
14	5.502	591	593	597	rBV2	104	183	0.01%	0.002%
15	5.551	600	601	605	rVB2	134	110	0.01%	0.001%
16	5.685	621	623	625	rBV	181	210	0.02%	0.002%
17	5.752	632	634	635	rBV	242	166	0.01%	0.002%
18	5.771	635	637	638	rVV	175	136	0.01%	0.001%
19	5.789	638	640	643	rVV	197	220	0.02%	0.002%
20	5.947	658	666	674	rVB3	2540	7300	0.57%	0.072%
21	6.002	674	675	677	rBV	188	142	0.01%	0.001%
22	6.173	701	703	706	rBV2	110	114	0.01%	0.001%
23	6.380	736	737	741	rBV2	142	140	0.01%	0.001%
24	6.703	789	790	792	rBV2	137	103	0.01%	0.001%
25	6.783	802	803	806	rVB2	135	105	0.01%	0.001%
26	6.905	820	823	825	rBV2	120	122	0.01%	0.001%
27	6.953	829	831	834	rVB2	126	132	0.01%	0.001%
28	7.081	843	852	861	rBV	29569	91634	7.14%	0.908%
29	7.331	892	893	896	rVB2	294	238	0.02%	0.002%
30	7.362	896	898	902	rBV4	342	538	0.04%	0.005%
31	7.508	921	922	925	rVB2	229	199	0.02%	0.002%
32	7.551	927	929	930	rVV	206	113	0.01%	0.001%
33	7.648	935	945	959	rBV	227000	553738	43.13%	5.488%
34	7.862	978	980	981	rVB2	298	169	0.01%	0.002%
35	7.886	981	984	985	rBV2	555	591	0.05%	0.006%
36	7.929	989	991	993	rVV	251	179	0.01%	0.002%

Data Path : Z:\voasrv\HPCHEM1\MSVOA_W\Data\VW021224\
 Data File : VW027991.D
 Acq On : 12 Feb 2024 11:48
 Operator : SY/MD
 Sample : P1442-11
 Misc : 4.80g/10mL/MSVOA_W/SOIL/A
 ALS Vial : 1 Sample Multiplier: 1

Instrument :
 MSVOA_W
 ClientSampleId :
 BH9W0

Integration Parameters: LSCINT.P

Integrator: RTE
 Smoothing : OFF
 Sampling : 1
 Start Thrs: 0.2
 Stop Thrs : 0

Filtering: 5
 Min Area: 0 % of largest Peak
 Max Peaks: 100
 Peak Location: TOP

If leading or trailing edge < 100 prefer < Baseline drop else tangent >
 Peak separation: 5

Method : Z:\voasrv\HPCHEM1\MSVOA_W\Method\SFAMWLM020524SMA.M
 Title : SFAM01.0

37	7.953	993	995	997	rVB	225	148	0.01%	0.001%
38	8.020	1004	1006	1009	rBV	213	131	0.01%	0.001%
39	8.063	1011	1013	1016	rVB2	174	130	0.01%	0.001%
40	8.136	1023	1025	1026	rBV2	235	174	0.01%	0.002%
41	8.276	1038	1048	1068	rBV2	444990	1283982	100.00%	12.725%
42	8.606	1100	1102	1103	rBV	628	497	0.04%	0.005%
43	8.837	1132	1140	1150	rBV	515939	1015765	79.11%	10.067%
44	9.270	1203	1211	1220	rBV	284817	582829	45.39%	5.776%
45	9.666	1272	1276	1281	rBV4	849	1394	0.11%	0.014%
46	10.032	1329	1336	1348	rVB	163854	294384	22.93%	2.918%
47	10.319	1376	1383	1392	rVB	680839	1186127	92.38%	11.755%
48	10.575	1419	1425	1441	rVB	100087	175005	13.63%	1.734%
49	10.703	1441	1446	1451	rBV2	2253	3658	0.28%	0.036%
50	10.922	1475	1482	1497	rBV	141053	235990	18.38%	2.339%
51	11.062	1500	1505	1514	rVB2	7369	11546	0.90%	0.114%
52	11.251	1533	1536	1541	rBV4	150	249	0.02%	0.002%
53	11.373	1555	1556	1558	rBV2	195	151	0.01%	0.001%
54	11.440	1561	1567	1572	rVB3	1206	2148	0.17%	0.021%
55	11.538	1581	1583	1585	rVB2	142	130	0.01%	0.001%
56	11.629	1590	1598	1609	rBV	705916	1197302	93.25%	11.866%
57	11.837	1628	1632	1637	rVB3	641	1100	0.09%	0.011%
58	11.928	1646	1647	1650	rBV2	163	147	0.01%	0.001%
59	11.971	1651	1654	1655	rBV	131	130	0.01%	0.001%
60	12.032	1661	1664	1665	rBV3	159	136	0.01%	0.001%
61	12.105	1674	1676	1678	rVB2	194	159	0.01%	0.002%
62	12.129	1678	1680	1681	rBV	143	105	0.01%	0.001%
63	12.282	1703	1705	1708	rVB	177	169	0.01%	0.002%
64	12.343	1713	1715	1718	rVB2	117	132	0.01%	0.001%
65	12.465	1731	1735	1739	rVB3	234	281	0.02%	0.003%
66	12.507	1739	1742	1745	rVB2	162	186	0.01%	0.002%
67	12.544	1745	1748	1749	rBV2	86	105	0.01%	0.001%
68	12.599	1751	1757	1764	rBV	10912	18297	1.43%	0.181%
69	12.690	1764	1772	1780	rBV	247036	406049	31.62%	4.024%
70	12.873	1800	1802	1803	rBV	107	114	0.01%	0.001%
71	12.928	1807	1811	1816	rVV2	1939	3099	0.24%	0.031%
72	13.129	1843	1844	1846	rBV	224	135	0.01%	0.001%
73	13.153	1846	1848	1849	rBV	221	196	0.02%	0.002%
74	13.184	1851	1853	1857	rVB3	882	907	0.07%	0.009%
75	13.227	1858	1860	1861	rBV	334	227	0.02%	0.002%
76	13.288	1865	1870	1876	rVB2	2900	4732	0.37%	0.047%

Data Path : Z:\voasrv\HPCHEM1\MSVOA_W\Data\VW021224\
 Data File : VW027991.D
 Acq On : 12 Feb 2024 11:48
 Operator : SY/MD
 Sample : P1442-11
 Misc : 4.80g/10mL/MSVOA_W/SOIL/A
 ALS Vial : 1 Sample Multiplier: 1

Instrument :
 MSVOA_W
 ClientSampleId :
 BH9W0

Integration Parameters: LSCINT.P

Integrator: RTE
 Smoothing : OFF Filtering: 5
 Sampling : 1 Min Area: 0 % of largest Peak
 Start Thrs: 0.2 Max Peaks: 100
 Stop Thrs : 0 Peak Location: TOP

If leading or trailing edge < 100 prefer < Baseline drop else tangent >
 Peak separation: 5

Method : Z:\voasrv\HPCHEM1\MSVOA_W\Method\SFAMWLM020524SMA.M
 Title : SFAM01.0

77	13.397	1882	1888	1893	rVB3	1719	3069	0.24%	0.030%
78	13.495	1899	1904	1905	rBV2	415	659	0.05%	0.007%
79	13.556	1906	1914	1927	rBV	729468	1213518	94.51%	12.027%
80	13.739	1942	1944	1945	rBV	432	274	0.02%	0.003%
81	13.763	1945	1948	1955	rVV4	597	842	0.07%	0.008%
82	13.848	1955	1962	1970	rBV	651211	1039252	80.94%	10.300%
83	14.062	1991	1997	2003	rVB2	7280	11979	0.93%	0.119%
84	14.294	2032	2035	2037	rBV2	416	458	0.04%	0.005%
85	14.489	2065	2067	2068	rBV	287	190	0.01%	0.002%
86	14.562	2078	2079	2080	rBV	207	108	0.01%	0.001%
87	14.665	2092	2096	2097	rBV2	246	258	0.02%	0.003%
88	14.714	2099	2104	2109	rVB4	1695	2915	0.23%	0.029%
89	14.763	2111	2112	2113	rBV	283	122	0.01%	0.001%
90	14.842	2123	2125	2128	rBV2	326	372	0.03%	0.004%
91	14.915	2135	2137	2139	rBV2	244	142	0.01%	0.001%
92	14.952	2141	2143	2144	rBV	272	166	0.01%	0.002%
93	15.025	2154	2155	2159	rVB2	333	386	0.03%	0.004%
94	15.062	2159	2161	2162	rBV	224	176	0.01%	0.002%
95	15.177	2178	2180	2183	rBV3	310	292	0.02%	0.003%
96	15.287	2196	2198	2199	rBV2	231	119	0.01%	0.001%
97	15.427	2216	2221	2225	rBV2	5033	8061	0.63%	0.080%
98	15.818	2283	2285	2286	rBV2	305	169	0.01%	0.002%
99	15.927	2302	2303	2304	rBV	276	144	0.01%	0.001%
100	16.299	2360	2364	2365	rBV3	522	580	0.05%	0.006%

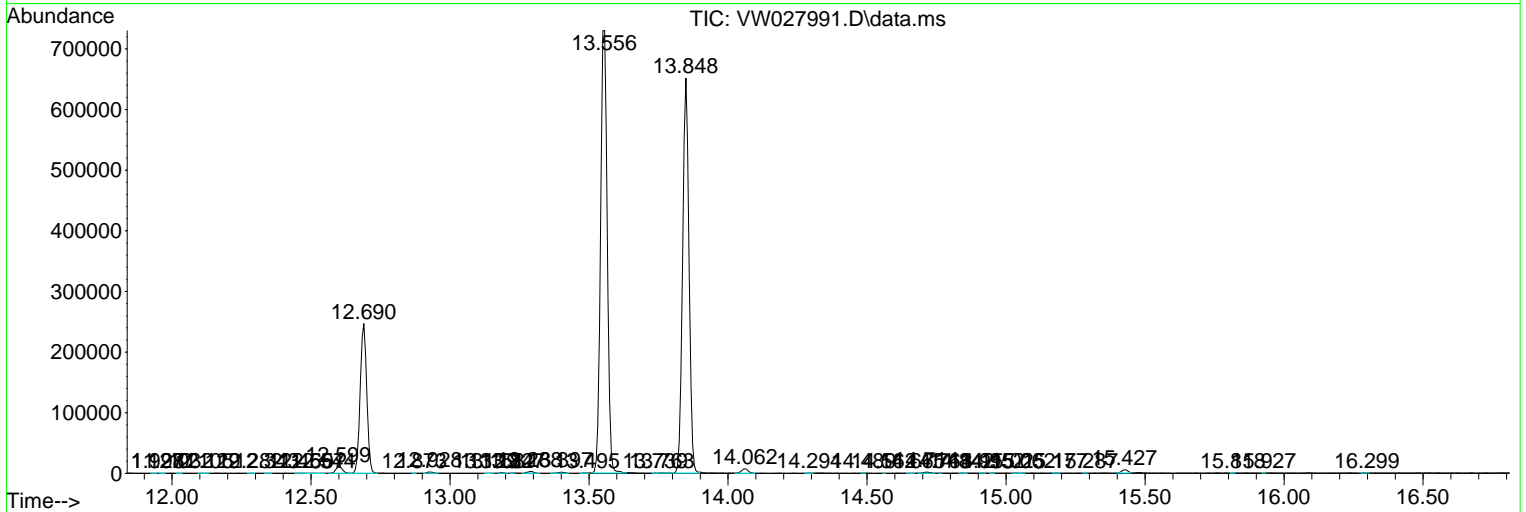
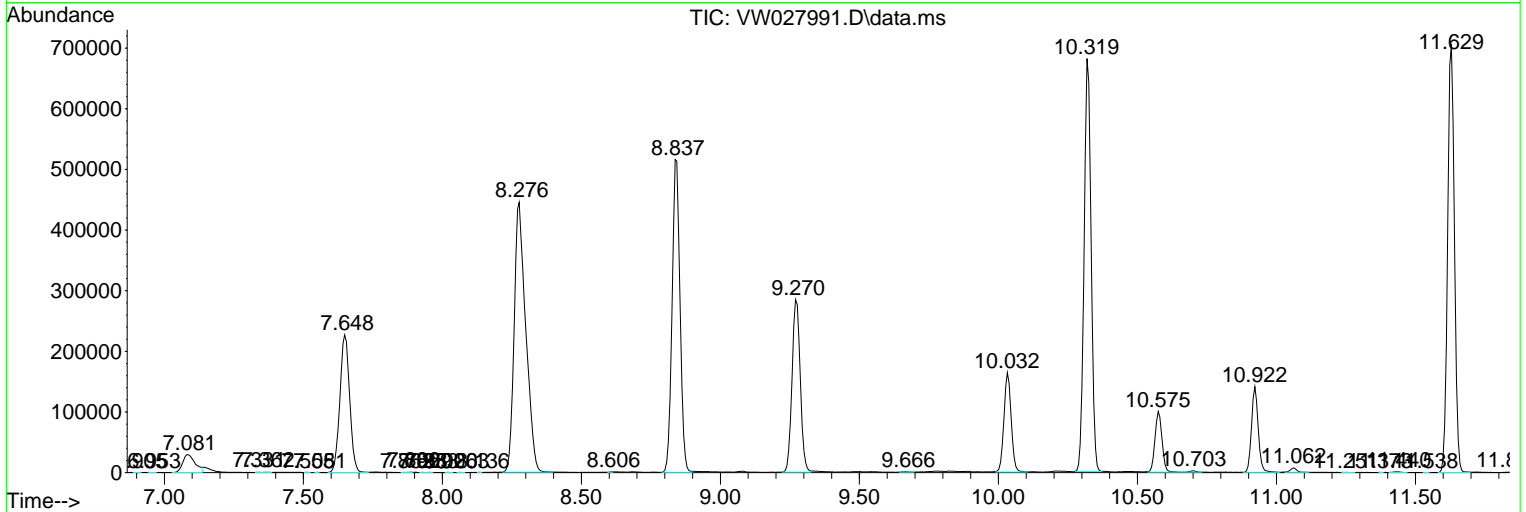
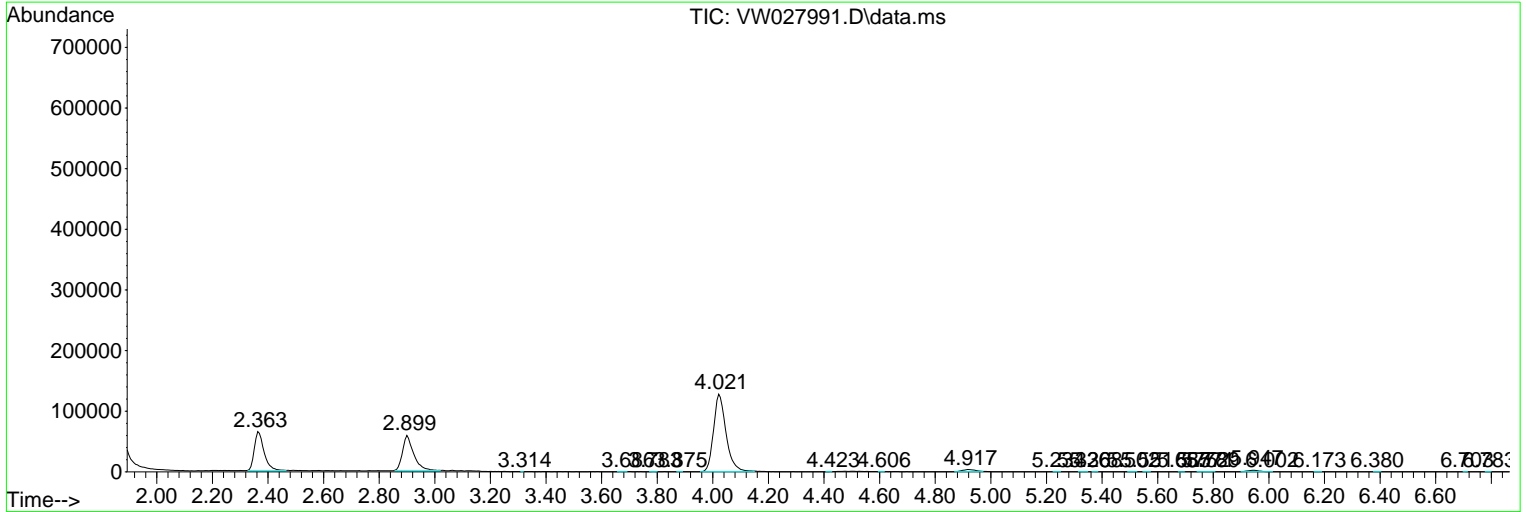
Sum of corrected areas: 10090153

Data Path : Z:\voasrv\HPCHEM1\MSVOA_W\Data\VW021224\
 Data File : VW027991.D
 Acq On : 12 Feb 2024 11:48
 Operator : SY/MD
 Sample : P1442-11
 Misc : 4.80g/10mL/MSVOA_W/SOIL/A
 ALS Vial : 1 Sample Multiplier: 1

Instrument :
 MSVOA_W
 ClientSampleId :
 BH9W0

Quant Method : Z:\voasrv\HPCHEM1\MSVOA_W\Method\SFAMWLM020524SMA.M
 Quant Title : SFAM01.0

TIC Library : C:\Database\NIST20.L
 TIC Integration Parameters: LSCINT.P



Library Search Compound Report

Data Path : Z:\voasrv\HPCHEM1\MSVOA_W\Data\VW021224\
Data File : VW027991.D
Acq On : 12 Feb 2024 11:48
Operator : SY/MD
Sample : P1442-11
Misc : 4.80g/10mL/MSVOA_W/SOIL/A
ALS Vial : 1 Sample Multiplier: 1

Instrument :
MSVOA_W
ClientSampleId :
BH9W0

Quant Method : Z:\voasrv\HPCHEM1\MSVOA_W\Method\SFAMWLM020524SMA.M
Quant Title : SFAM01.0

TIC Library : C:\Database\NIST20.L
TIC Integration Parameters: LSCINT.P

No Library Search Compounds Detected

Data Path : Z:\voasrv\HPCHEM1\MSVOA_W\Data\VW021224\
Data File : VW027991.D
Acq On : 12 Feb 2024 11:48
Operator : SY/MD
Sample : P1442-11
Misc : 4.80g/10mL/MSVOA_W/SOIL/A
ALS Vial : 1 Sample Multiplier: 1

Instrument :
MSVOA_W
ClientSampleId :
BH9W0

Quant Method : Z:\voasrv\HPCHEM1\MSVOA_W\Method\SFAMWLM020524SMA.M
Quant Title : SFAM01.0

TIC Library : C:\Database\NIST0.L
TIC Integration Parameters: LSCINT.P

TIC Top Hit name	RT	EstConc	Units	Response	--Internal Standard--			
					#	RT	Resp	Conc
