

Data Path : Z:\voasrv\HPCHEM1\MSVOA\_W\Data\VW021424\  
 Data File : VW028001.D  
 Acq On : 14 Feb 2024 13:05  
 Operator : SY/MD  
 Sample : P1442-14  
 Misc : 5.31g/10mL/MSVOA\_W/SOIL/A  
 ALS Vial : 1 Sample Multiplier: 1

Instrument :  
 MSVOA\_W  
 ClientSampleId :

Quant Time: Feb 15 00:30:53 2024  
 Quant Method : Z:\voasrv\HPCHEM1\MSVOA\_W\Method\SFAMWLM020524SMA.M  
 Quant Title : SFAM01.0  
 QLast Update : Thu Feb 15 00:29:03 2024  
 Response via : Initial Calibration

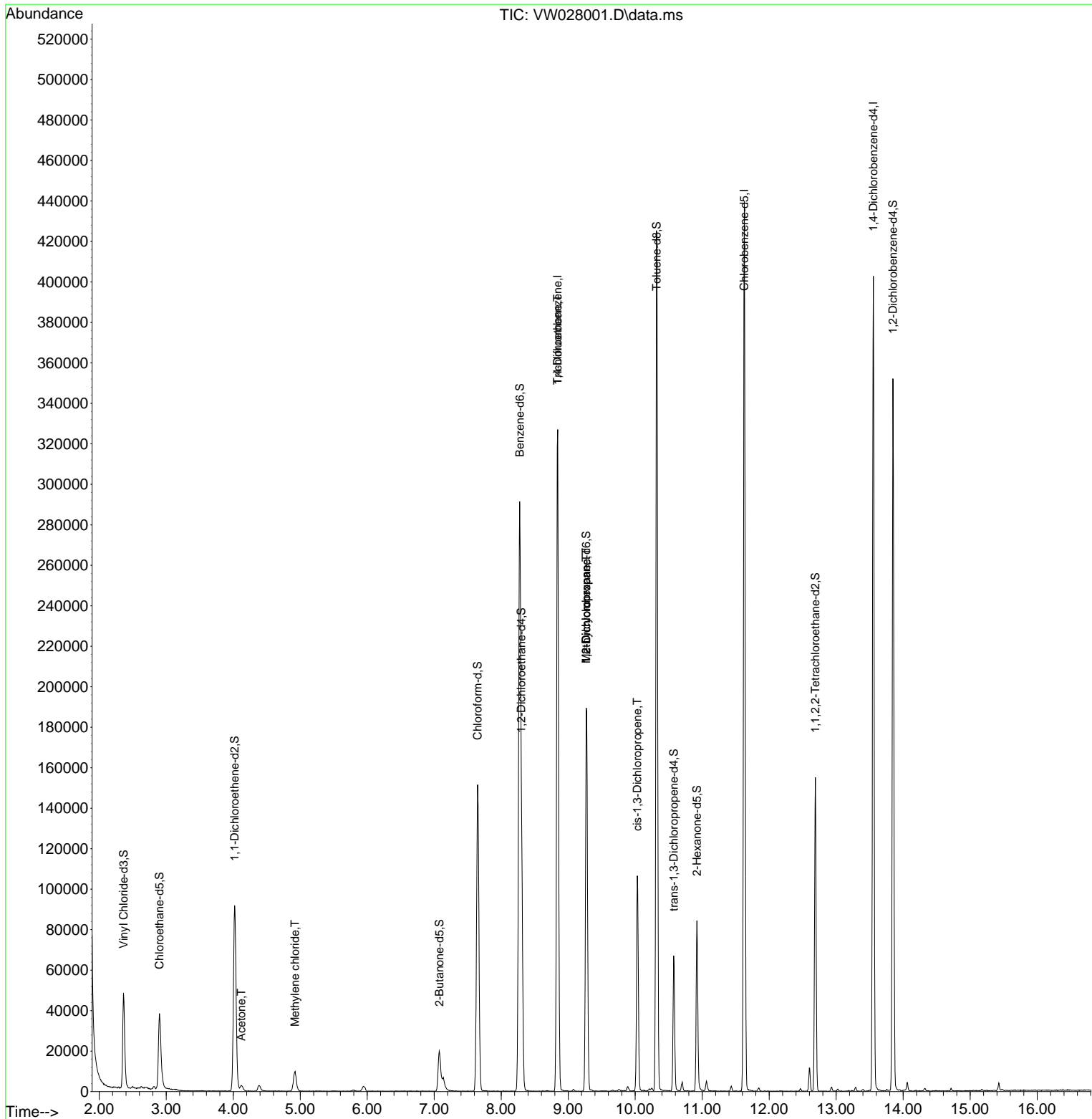
Compound	R.T.	QIon	Response	Conc	Units	Dev(Min)
Internal Standards						
1) 1,4-Difluorobenzene	8.843	114	301768	25.000	ug/L	0.00
28) Chlorobenzene-d5	11.629	117	262304	25.000	ug/L	0.00
58) 1,4-Dichlorobenzene-d4	13.556	152	114619	25.000	ug/L	0.00
System Monitoring Compounds						
4) Vinyl Chloride-d3	2.362	65	61948	17.527	ug/L	0.00
Spiked Amount	25.000	Range 30 - 150	Recovery =	70.120%		
7) Chloroethane-d5	2.899	69	57671	21.513	ug/L	0.00
Spiked Amount	25.000	Range 30 - 150	Recovery =	86.040%		
11) 1,1-Dichloroethene-d2	4.021	65	28850	19.077	ug/L	0.00
Spiked Amount	25.000	Range 45 - 110	Recovery =	76.320%		
21) 2-Butanone-d5	7.075	46	32621	59.400	ug/L	0.00
Spiked Amount	50.000	Range 20 - 135	Recovery =	118.800%		
24) Chloroform-d	7.648	84	162216	22.990	ug/L	0.00
Spiked Amount	25.000	Range 40 - 150	Recovery =	91.960%		
26) 1,2-Dichloroethane-d4	8.300	65	82685	25.946	ug/L	0.00
Spiked Amount	25.000	Range 70 - 130	Recovery =	103.800%		
32) Benzene-d6	8.276	84	318440	22.691	ug/L	0.00
Spiked Amount	25.000	Range 20 - 135	Recovery =	90.760%		
36) 1,2-Dichloropropane-d6	9.270	67	93668	24.616	ug/L	0.00
Spiked Amount	25.000	Range 70 - 120	Recovery =	98.480%		
41) Toluene-d8	10.318	98	300324	22.366	ug/L	0.00
Spiked Amount	25.000	Range 30 - 130	Recovery =	89.480%		
43) trans-1,3-Dichloroprop...	10.574	79	38771	24.776	ug/L	0.00
Spiked Amount	25.000	Range 30 - 135	Recovery =	99.120%		
47) 2-Hexanone-d5	10.922	63	30525	58.977	ug/L	0.00
Spiked Amount	50.000	Range 20 - 135	Recovery =	117.960%		
56) 1,1,2,2-Tetrachloroeth...	12.690	84	77368	27.204	ug/L	0.00
Spiked Amount	25.000	Range 45 - 120	Recovery =	108.800%		
66) 1,2-Dichlorobenzene-d4	13.848	152	98192	25.205	ug/L	0.00
Spiked Amount	25.000	Range 75 - 120	Recovery =	100.800%		
Target Compounds						
13) Acetone	4.118	43	4042	7.569	ug/L	90
16) Methylene chloride	4.923	84	8416	2.231	ug/L	94
34) Trichloroethene	8.843	95	8830	2.348	ug/L #	4
35) Methylcyclohexane	9.270	83	24453	3.951	ug/L #	22
37) 1,2-Dichloropropane	9.270	63	10385	3.373	ug/L #	84
39) cis-1,3-Dichloropropene	10.032	75	2876	0.583	ug/L #	79

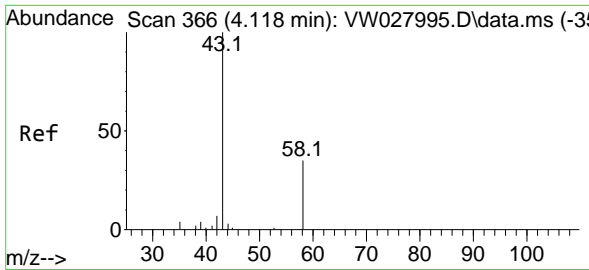
(#) = qualifier out of range (m) = manual integration (+) = signals summed

Data Path : Z:\voasrv\HPCHEM1\MSVOA\_W\Data\VW021424\  
 Data File : VW028001.D  
 Acq On : 14 Feb 2024 13:05  
 Operator : SY/MD  
 Sample : P1442-14  
 Misc : 5.31g/10mL/MSVOA\_W/SOIL/A  
 ALS Vial : 1 Sample Multiplier: 1

Instrument :  
 MSVOA\_W  
 ClientSampleId :

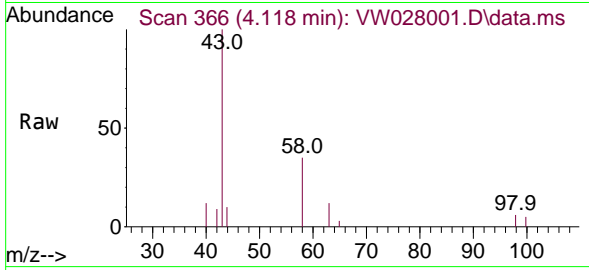
Quant Time: Feb 15 00:30:53 2024  
 Quant Method : Z:\voasrv\HPCHEM1\MSVOA\_W\Method\SFAMWLM020524SMA.M  
 Quant Title : SFAM01.0  
 QLast Update : Thu Feb 15 00:29:03 2024  
 Response via : Initial Calibration



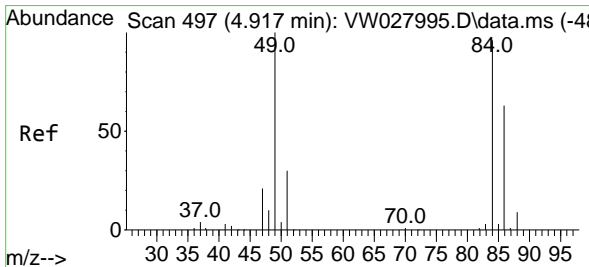
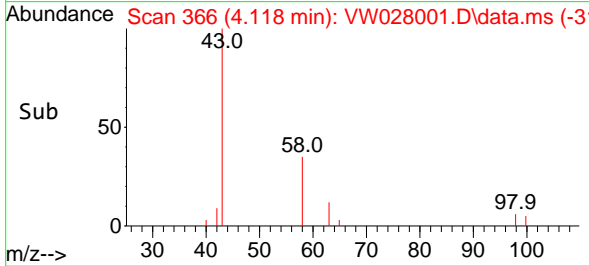
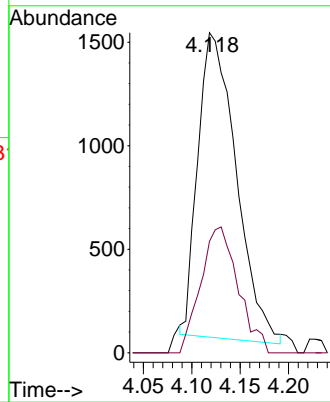


#13  
 Acetone  
 Concen: 7.569 ug/L  
 RT: 4.118 min Scan# 30  
 Delta R.T. -0.000 min  
 Lab File: VW028001.D  
 Acq: 14 Feb 2024 13:05

Instrument :  
 MSVOA\_W  
 ClientSampleId :

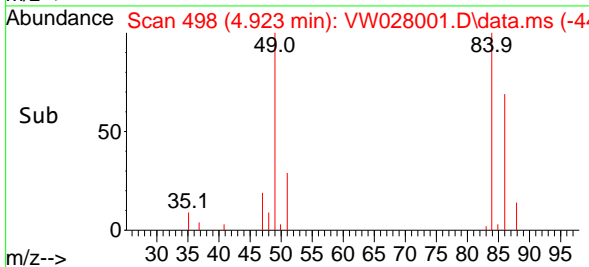
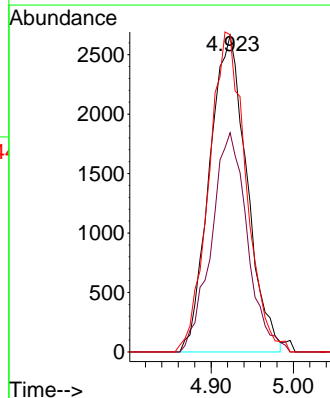
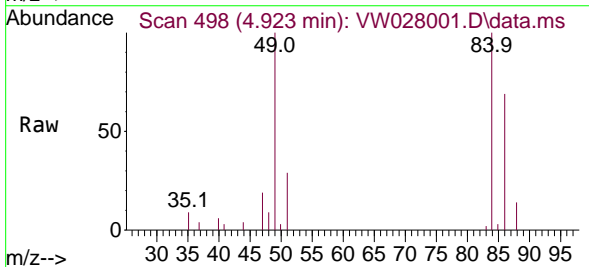


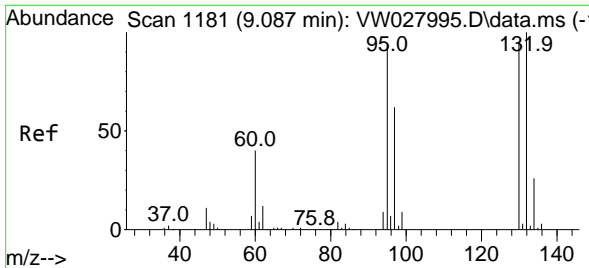
Tgt Ion: 43 Resp: 4042  
 Ion Ratio Lower Upper  
 43 100  
 58 38.6 0.0 66.0



#16  
 Methylene chloride  
 Concen: 2.231 ug/L  
 RT: 4.923 min Scan# 498  
 Delta R.T. 0.006 min  
 Lab File: VW028001.D  
 Acq: 14 Feb 2024 13:05

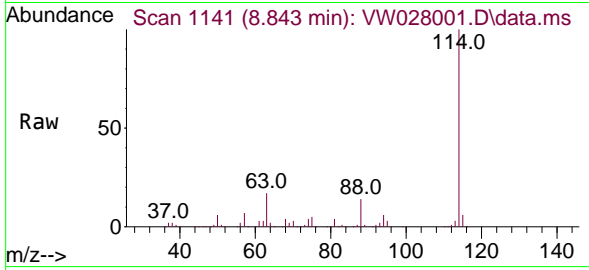
Tgt Ion: 84 Resp: 8416  
 Ion Ratio Lower Upper  
 84 100  
 86 69.3 45.4 84.4  
 49 100.3 66.3 123.1





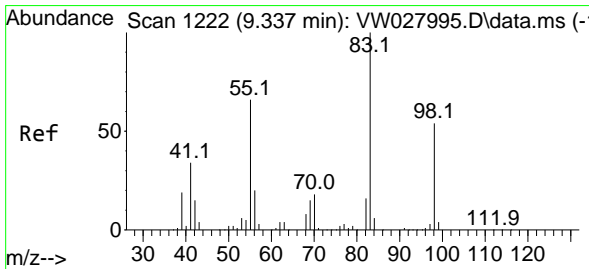
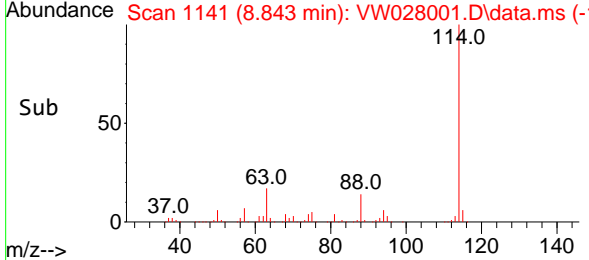
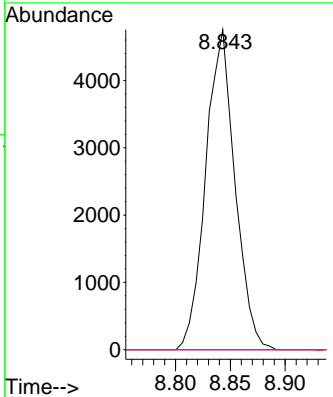
#34  
 Trichloroethene  
 Concen: 2.348 ug/L  
 RT: 8.843 min Scan# 1111  
 Delta R.T. -0.244 min  
 Lab File: VW028001.D  
 Acq: 14 Feb 2024 13:05

Instrument : MSVOA\_W  
 ClientSampleId :

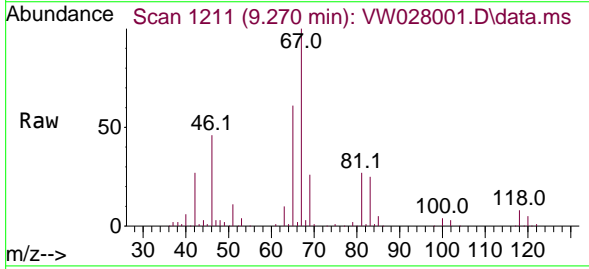


Tgt Ion: 95 Resp: 8830

Ion	Ratio	Lower	Upper
95	100		
97	0.0	44.3	82.3#
132	0.0	68.0	126.2#
130	0.0	75.5	140.3#

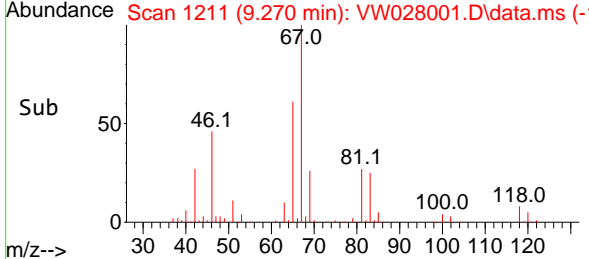
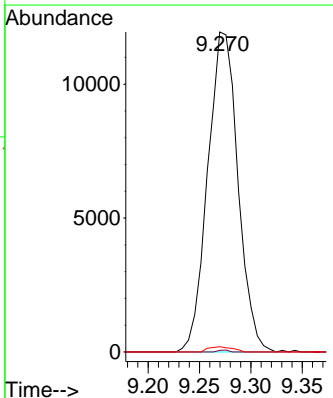


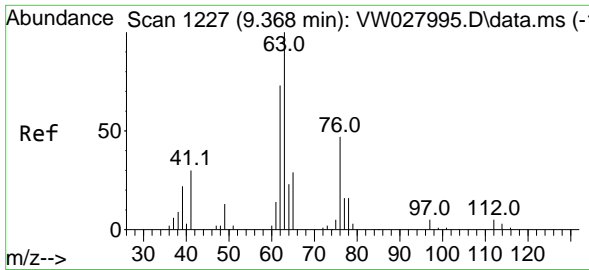
#35  
 Methylcyclohexane  
 Concen: 3.951 ug/L  
 RT: 9.270 min Scan# 1211  
 Delta R.T. -0.067 min  
 Lab File: VW028001.D  
 Acq: 14 Feb 2024 13:05



Tgt Ion: 83 Resp: 24453

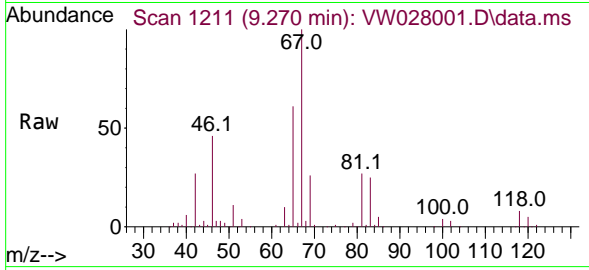
Ion	Ratio	Lower	Upper
83	100		
55	0.2	52.3	78.5#
98	1.3	41.9	62.9#



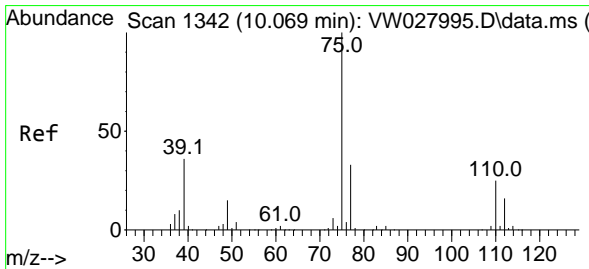
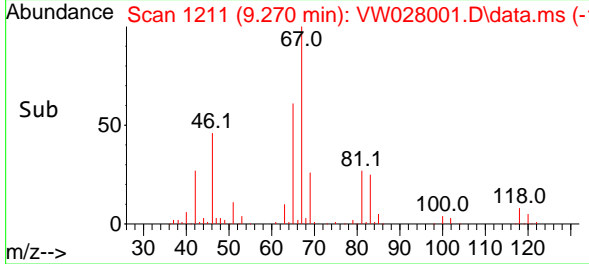
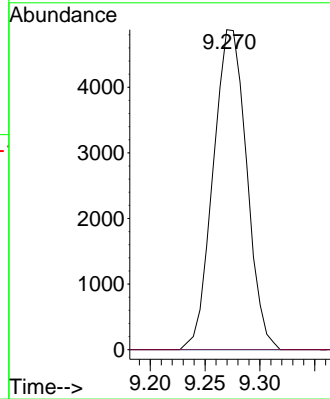


#37  
 1,2-Dichloropropane  
 Concen: 3.373 ug/L  
 RT: 9.270 min Scan# 111  
 Delta R.T. -0.098 min  
 Lab File: VW028001.D  
 Acq: 14 Feb 2024 13:05

Instrument :  
 MSVOA\_W  
 ClientSampled :



Tgt Ion: 63 Resp: 10385  
 Ion Ratio Lower Upper  
 63 100  
 112 0.0 4.2 6.2#



#39  
 cis-1,3-Dichloropropene  
 Concen: 0.583 ug/L  
 RT: 10.032 min Scan# 1336  
 Delta R.T. -0.037 min  
 Lab File: VW028001.D  
 Acq: 14 Feb 2024 13:05

Tgt Ion: 75 Resp: 2876  
 Ion Ratio Lower Upper  
 75 100  
 77 43.8 22.4 41.6#

