

Data Path : Z:\voasrv\HPCHEM1\MSVOA\_W\Data\VW022223\  
 Data File : VW025360.D  
 Acq On : 22 Feb 2023 15:17  
 Operator : SY/MD  
 Sample : 01628-06  
 Misc : 5.52g/10mL/MSVOA\_W/SOIL  
 ALS Vial : 1 Sample Multiplier: 1

Instrument :  
 MSVOA\_W  
 ClientSampleId :  
 EXZC2

Integration Parameters: LSCINT.P

Integrator: RTE  
 Smoothing : OFF  
 Sampling : 1  
 Start Thrs : 0.2  
 Stop Thrs : 0

Filtering: 5  
 Min Area: 0 % of largest Peak  
 Max Peaks: 100  
 Peak Location: TOP

If leading or trailing edge < 100 prefer < Baseline drop else tangent >  
 Peak separation: 5

Method : Z:\voasrv\HPCHEM1\MSVOA\_W\Method\SFAMWLM022223SMA.M  
 Title : SFAM01.0

Signal : TIC: VW025360.D\data.ms

peak #	R.T. min	first scan	max scan	last scan	PK TY	peak height	corr. area	corr. % max.	% of total
1	2.363	72	78	89	rVB	52201	120416	10.64%	1.403%
2	2.899	159	166	179	rBV	36812	102173	9.03%	1.191%
3	3.204	214	216	217	rBV	428	414	0.04%	0.005%
4	3.320	232	235	238	rBV3	323	444	0.04%	0.005%
5	3.393	241	247	249	rBV5	1005	1715	0.15%	0.020%
6	3.582	276	278	279	rVB	439	307	0.03%	0.004%
7	3.600	279	281	282	rBV2	246	173	0.02%	0.002%
8	3.619	282	284	287	rBV2	228	233	0.02%	0.003%
9	3.777	308	310	312	rBV	144	150	0.01%	0.002%
10	4.021	339	350	364	rBV	131035	370448	32.72%	4.316%
11	4.265	387	390	395	rBV2	314	378	0.03%	0.004%
12	4.375	403	408	409	rBV3	871	1131	0.10%	0.013%
13	4.393	409	411	413	rVV3	756	644	0.06%	0.008%
14	4.667	453	456	457	rBV2	227	264	0.02%	0.003%
15	4.771	471	473	475	rVV	218	140	0.01%	0.002%
16	4.917	487	497	513	rVB3	18223	59083	5.22%	0.688%
17	5.021	513	514	520	rVB2	311	268	0.02%	0.003%
18	5.362	569	570	575	rBV2	303	211	0.02%	0.002%
19	5.399	575	576	577	rBV	282	133	0.01%	0.002%
20	5.466	586	587	590	rVB	288	231	0.02%	0.003%
21	5.515	590	595	596	rBV	148	232	0.02%	0.003%
22	5.551	598	601	604	rVV2	201	216	0.02%	0.003%
23	5.746	632	633	635	rBV2	261	165	0.01%	0.002%
24	5.777	635	638	640	rVV2	370	324	0.03%	0.004%
25	5.801	640	642	645	rVB3	350	288	0.03%	0.003%
26	5.941	654	665	673	rBV6	3802	11956	1.06%	0.139%
27	6.033	679	680	682	rBV2	273	132	0.01%	0.002%
28	6.051	682	683	686	rVB2	207	131	0.01%	0.002%
29	6.082	686	688	690	rVB2	161	139	0.01%	0.002%
30	6.106	690	692	696	rBV2	173	218	0.02%	0.003%
31	6.149	696	699	702	rVB2	151	137	0.01%	0.002%
32	6.325	726	728	729	rVV2	252	182	0.02%	0.002%
33	6.417	742	743	745	rBV	220	135	0.01%	0.002%
34	6.575	766	769	772	rBV2	244	262	0.02%	0.003%
35	6.905	816	823	827	rVB2	281	533	0.05%	0.006%
36	6.947	827	830	832	rBV2	242	223	0.02%	0.003%

Data Path : Z:\voasrv\HPCHEM1\MSVOA\_W\Data\VW022223\  
 Data File : VW025360.D  
 Acq On : 22 Feb 2023 15:17  
 Operator : SY/MD  
 Sample : 01628-06  
 Misc : 5.52g/10mL/MSVOA\_W/SOIL  
 ALS Vial : 1 Sample Multiplier: 1

Instrument :  
 MSVOA\_W  
 ClientSampleId :  
 EXZC2

Integration Parameters: LSCINT.P

Integrator: RTE  
 Smoothing : OFF  
 Sampling : 1  
 Start Thrs : 0.2  
 Stop Thrs : 0

Filtering: 5  
 Min Area: 0 % of largest Peak  
 Max Peaks: 100  
 Peak Location: TOP

If leading or trailing edge < 100 prefer < Baseline drop else tangent >  
 Peak separation: 5

Method : Z:\voasrv\HPCHEM1\MSVOA\_W\Method\SFAMWLM022223SMA.M  
 Title : SFAM01.0

37	6.984	832	836	839	rBV4	383	586	0.05%	0.007%
38	7.075	842	851	857	rBV	22075	64093	5.66%	0.747%
39	7.398	902	904	906	rBV	253	181	0.02%	0.002%
40	7.520	922	924	925	rBV	189	171	0.02%	0.002%
41	7.563	929	931	933	rVB	247	143	0.01%	0.002%
42	7.648	934	945	958	rVV	172640	418092	36.93%	4.872%
43	7.819	972	973	975	rBV2	223	199	0.02%	0.002%
44	7.923	981	990	991	rBV3	1053	1560	0.14%	0.018%
45	8.033	1003	1008	1012	rBV4	1043	1914	0.17%	0.022%
46	8.093	1016	1018	1021	rVB2	204	178	0.02%	0.002%
47	8.161	1024	1029	1034	rVB5	1389	2777	0.25%	0.032%
48	8.276	1036	1048	1066	rBV2	342320	992828	87.70%	11.568%
49	8.441	1067	1075	1077	rVB7	1166	2781	0.25%	0.032%
50	8.508	1080	1086	1091	rBV4	1072	2545	0.22%	0.030%
51	8.575	1091	1097	1103	rVB4	1843	3916	0.35%	0.046%
52	8.636	1103	1107	1108	rBV2	504	421	0.04%	0.005%
53	8.697	1112	1117	1122	rVB5	1168	2141	0.19%	0.025%
54	8.734	1122	1123	1125	rBV	236	128	0.01%	0.001%
55	8.843	1132	1141	1151	rBV	508926	1011576	89.36%	11.787%
56	8.977	1162	1163	1165	rBV	217	207	0.02%	0.002%
57	9.087	1173	1181	1184	rVV4	1081	2178	0.19%	0.025%
58	9.154	1188	1192	1195	rVB2	397	630	0.06%	0.007%
59	9.276	1203	1212	1219	rBV	215367	456565	40.33%	5.320%
60	9.520	1247	1252	1256	rVB4	1607	2570	0.23%	0.030%
61	9.599	1258	1265	1273	rVB6	4109	9431	0.83%	0.110%
62	9.752	1283	1290	1298	rBV7	3785	8188	0.72%	0.095%
63	9.898	1309	1314	1316	rBV5	817	1265	0.11%	0.015%
64	9.941	1319	1321	1326	rBV4	748	1202	0.11%	0.014%
65	10.032	1330	1336	1343	rBV	121874	221300	19.55%	2.579%
66	10.209	1359	1365	1374	rBV7	2750	6967	0.62%	0.081%
67	10.325	1376	1384	1392	rBV	492135	873873	77.19%	10.182%
68	10.575	1419	1425	1434	rBV	77131	139083	12.29%	1.621%
69	10.666	1435	1440	1444	rBV4	9899	15954	1.41%	0.186%
70	10.758	1451	1455	1456	rBV3	2436	3145	0.28%	0.037%
71	10.922	1476	1482	1496	rBV	88647	155537	13.74%	1.812%
72	11.062	1500	1505	1509	rBV2	9513	15627	1.38%	0.182%
73	11.227	1528	1532	1537	rVB4	4020	6490	0.57%	0.076%
74	11.282	1537	1541	1545	rBV3	1881	2872	0.25%	0.033%
75	11.325	1546	1548	1555	rVB5	2678	4555	0.40%	0.053%
76	11.386	1555	1558	1559	rBV2	548	560	0.05%	0.007%

Data Path : Z:\voasrv\HPCHEM1\MSVOA\_W\Data\VW022223\  
 Data File : VW025360.D  
 Acq On : 22 Feb 2023 15:17  
 Operator : SY/MD  
 Sample : 01628-06  
 Misc : 5.52g/10mL/MSVOA\_W/SOIL  
 ALS Vial : 1 Sample Multiplier: 1

Instrument :  
 MSVOA\_W  
 ClientSampleId :  
 EXZC2

Integration Parameters: LSCINT.P

Integrator: RTE  
 Smoothing : OFF Filtering: 5  
 Sampling : 1 Min Area: 0 % of largest Peak  
 Start Thrs: 0.2 Max Peaks: 100  
 Stop Thrs : 0 Peak Location: TOP

If leading or trailing edge < 100 prefer < Baseline drop else tangent >  
 Peak separation: 5

Method : Z:\voasrv\HPCHEM1\MSVOA\_W\Method\SFAMWLM022223SMA.M  
 Title : SFAM01.0

77	11.434	1561	1566	1573	rVB4	10054	17519	1.55%	0.204%
78	11.514	1575	1579	1582	rBV3	815	1302	0.12%	0.015%
79	11.550	1583	1585	1586	rVB2	634	314	0.03%	0.004%
80	11.629	1590	1598	1607	rBV	693201	1132061	100.00%	13.191%
81	11.831	1625	1631	1640	rBV3	16873	45144	3.99%	0.526%
82	11.971	1649	1654	1660	rBV5	3381	7040	0.62%	0.082%
83	12.032	1662	1664	1668	rBV5	1780	2753	0.24%	0.032%
84	12.142	1674	1682	1692	rBV2	35986	94796	8.37%	1.105%
85	12.300	1703	1708	1711	rBV	20994	35485	3.13%	0.413%
86	12.690	1765	1772	1778	rBV	165982	289689	25.59%	3.375%
87	12.861	1793	1800	1803	rBV5	14543	33601	2.97%	0.392%
88	13.556	1907	1914	1922	rBV	675483	1070018	94.52%	12.468%
89	13.849	1956	1962	1972	rVB	383197	682392	60.28%	7.951%
90	14.178	2014	2016	2020	rBV4	3068	4237	0.37%	0.049%
91	14.324	2035	2040	2044	rVB5	12116	19045	1.68%	0.222%
92	14.379	2045	2049	2053	rVV4	6118	8966	0.79%	0.104%
93	14.812	2116	2120	2122	rVB5	1526	2025	0.18%	0.024%
94	15.123	2169	2171	2176	rBV4	2146	2835	0.25%	0.033%
95	15.178	2176	2180	2184	rVB4	5153	8196	0.72%	0.095%
96	15.367	2207	2211	2214	rBV4	2393	3124	0.28%	0.036%
97	15.428	2216	2221	2225	rVV	4982	8500	0.75%	0.099%
98	15.842	2285	2289	2293	rBV5	1609	3025	0.27%	0.035%
99	15.946	2302	2306	2308	rBV4	787	1310	0.12%	0.015%
100	16.287	2360	2362	2364	rBV2	516	264	0.02%	0.003%

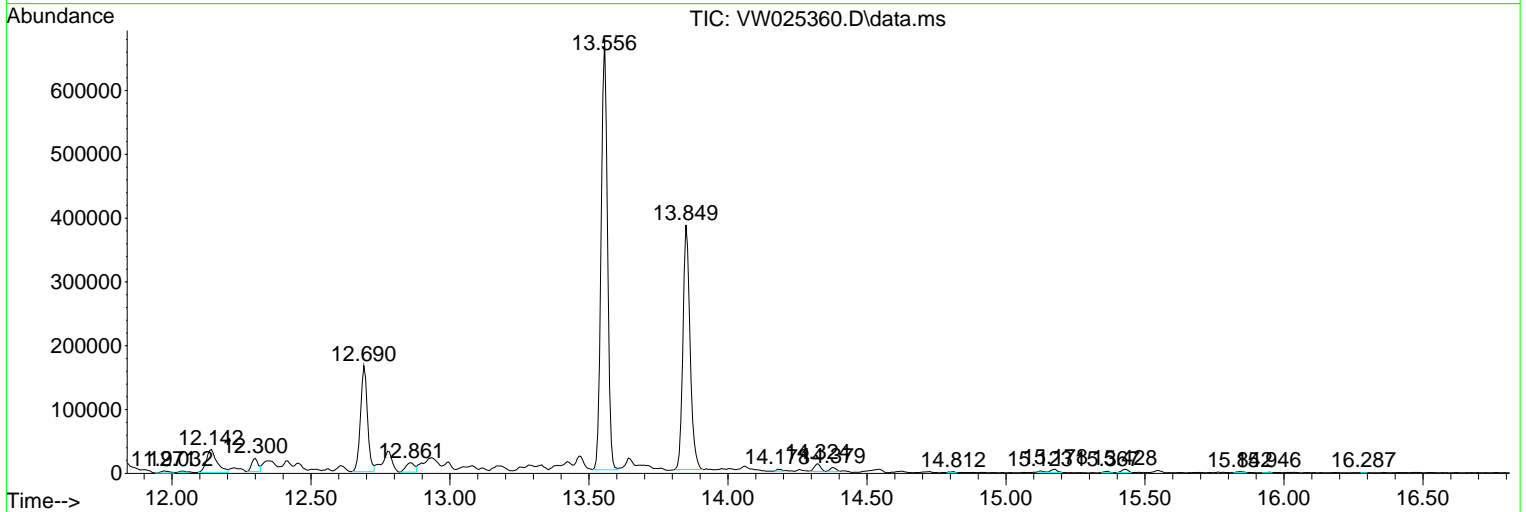
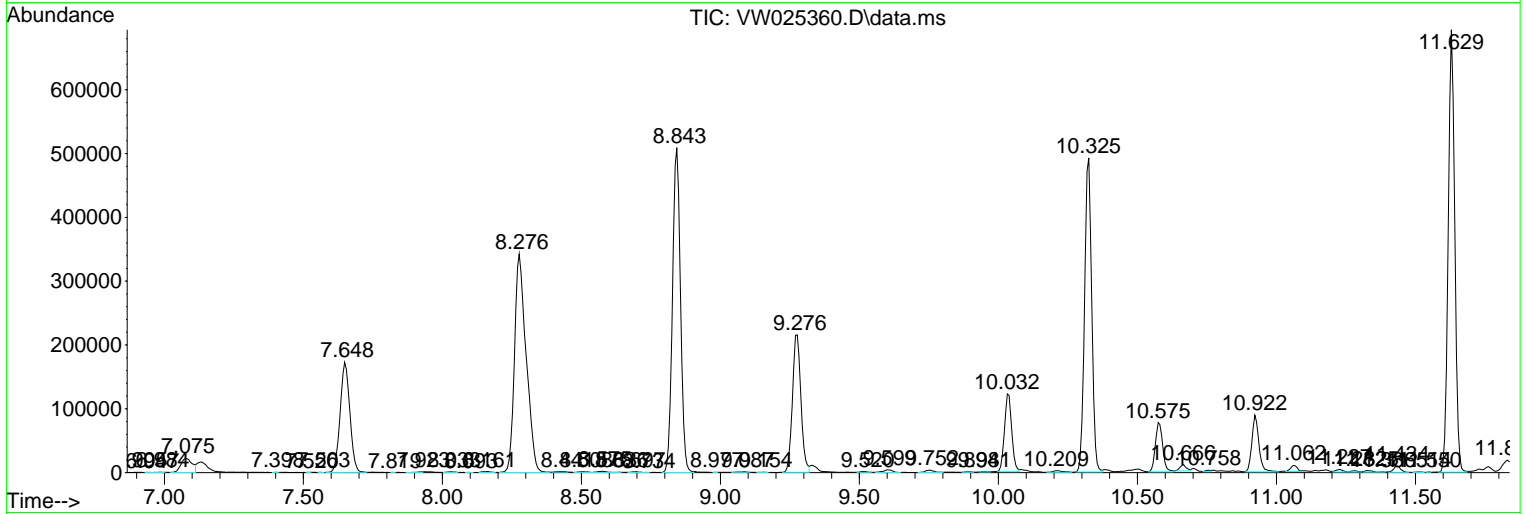
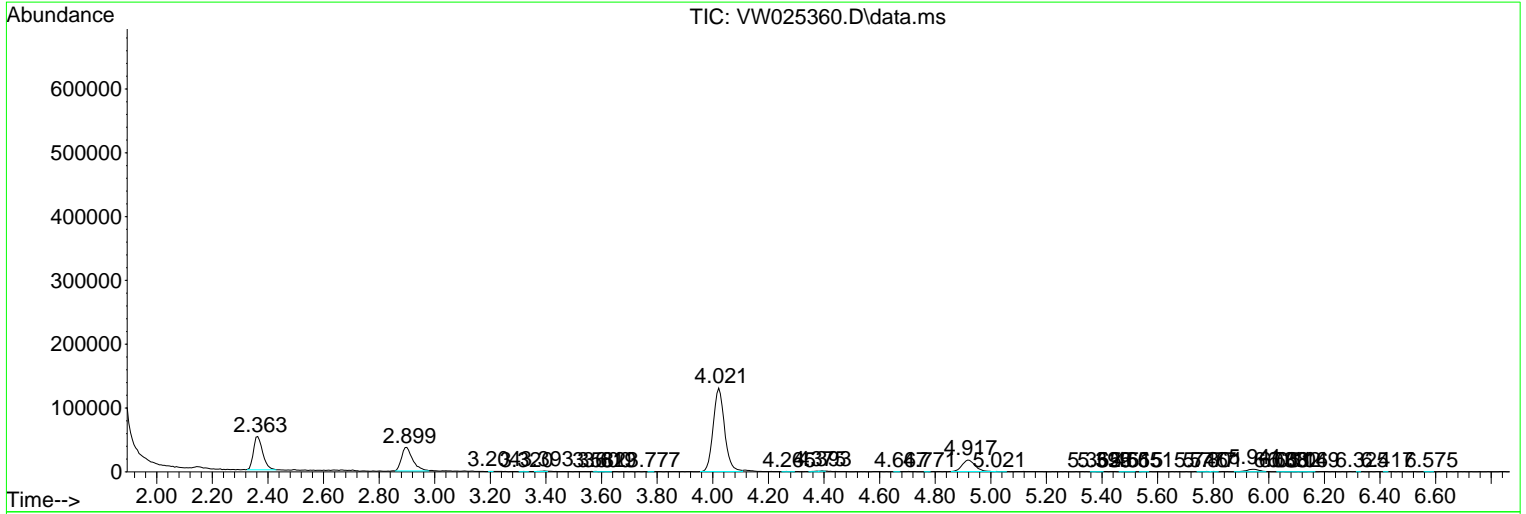
Sum of corrected areas: 8582299

Data Path : Z:\voasrv\HPCHEM1\MSVOA\_W\Data\VW022223\  
 Data File : VW025360.D  
 Acq On : 22 Feb 2023 15:17  
 Operator : SY/MD  
 Sample : 01628-06  
 Misc : 5.52g/10mL/MSVOA\_W/SOIL  
 ALS Vial : 1 Sample Multiplier: 1

Instrument :  
 MSVOA\_W  
 ClientSampleId :  
 EXZC2

Quant Method : Z:\voasrv\HPCHEM1\MSVOA\_W\Method\SFAMWLM022223SMA.M  
 Quant Title : SFAM01.0

TIC Library : C:\Database\NIST20.L  
 TIC Integration Parameters: LSCINT.P



Data Path : Z:\voasrv\HPCHEM1\MSVOA\_W\Data\VW022223\  
 Data File : VW025360.D  
 Acq On : 22 Feb 2023 15:17  
 Operator : SY/MD  
 Sample : 01628-06  
 Misc : 5.52g/10mL/MSVOA\_W/SOIL  
 ALS Vial : 1 Sample Multiplier: 1

Instrument :  
 MSVOA\_W  
 ClientSampleId :  
 EXZC2

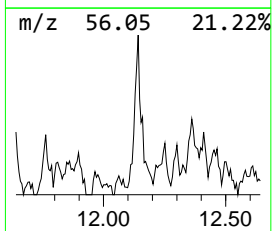
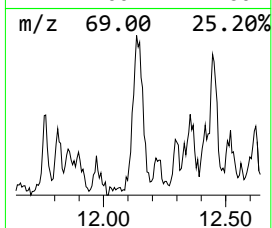
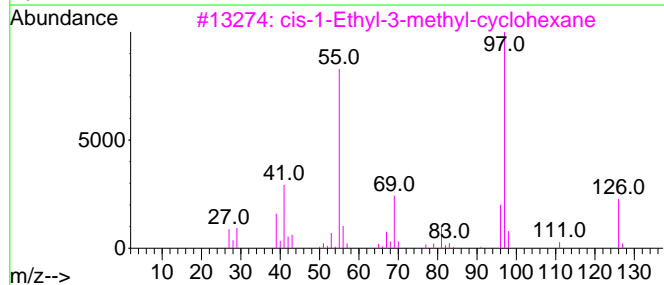
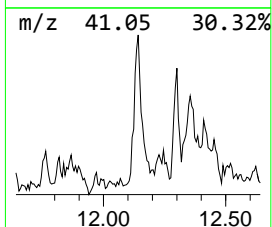
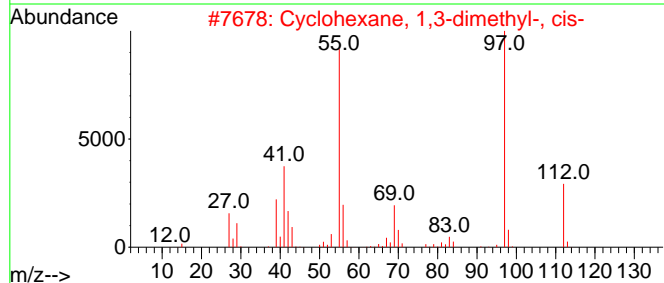
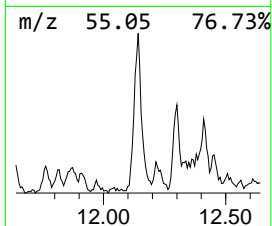
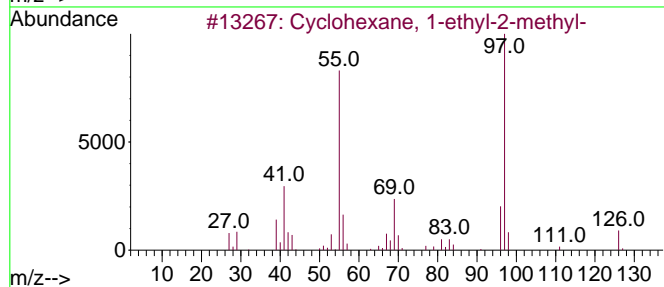
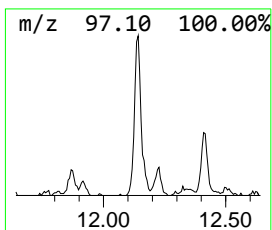
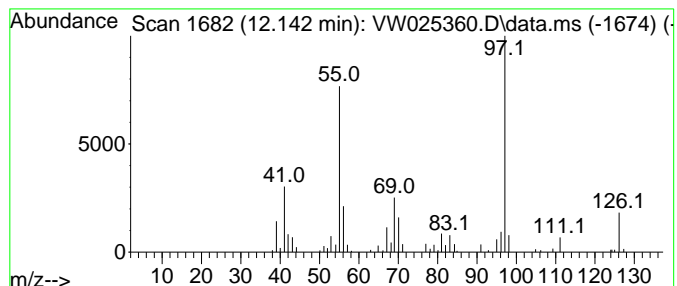
Quant Method : Z:\voasrv\HPCHEM1\MSVOA\_W\Method\SFAMWLM022223SMA.M  
 Quant Title : SFAM01.0

TIC Library : C:\Database\NIST0.L  
 TIC Integration Parameters: LSCINT.P

\*\*\*\*\*  
 Peak Number 3 (DEL) Alkane: Cyclic12.142 Concentration Rank 2

R.T.	EstConc	Area	Relative to ISTD	R.T.
12.142	2.09 ug/L	94796	Chlorobenzene-d5	11.629

Hit#	of	5	Tentative ID	MW	MolForm	CAS#	Qual
1			Cyclohexane, 1-ethyl-2-methyl-	126	C9H18	003728-54-9	87
2			Cyclohexane, 1,3-dimethyl-, cis-	112	C8H16	000638-04-0	64
3			cis-1-Ethyl-3-methyl-cyclohexane	126	C9H18	019489-10-2	62
4			Cyclohexane, 1-ethyl-4-methyl-, ...	126	C9H18	006236-88-0	59
5			Cyclohexane, 1-ethyl-4-methyl-, ...	126	C9H18	004926-78-7	59



Data Path : Z:\voasrv\HPCHEM1\MSVOA\_W\Data\VW022223\  
Data File : VW025360.D  
Acq On : 22 Feb 2023 15:17  
Operator : SY/MD  
Sample : 01628-06  
Misc : 5.52g/10mL/MSVOA\_W/SOIL  
ALS Vial : 1 Sample Multiplier: 1

Instrument :  
MSVOA\_W  
ClientSampleId :  
EXZC2

Quant Method : Z:\voasrv\HPCHEM1\MSVOA\_W\Method\SFAMWLM022223SMA.M  
Quant Title : SFAM01.0

TIC Library : C:\Database\NIST0.L  
TIC Integration Parameters: LSCINT.P

TIC Top Hit name	RT	EstConc	Units	Response	--Internal Standard--			
					#	RT	Resp	Conc
(DEL) Alkane: C...	12.142	2.1	ug/L	94796	2	11.629	1132060	25.0