

Data File : VW008965.D
 Acq On : 04 Mar 2019 14:34
 Operator : SY/VA
 Sample : K1657-06
 Misc : 6.25G/10ML/MSVOA_W/SOIL
 ALS Vial : 1 Sample Multiplier: 1

Instrument :
 MSVOA_W
 ClientSampleId :
 DB650RE

Quant Time: Mar 05 05:40:37 2019
 Quant Method : Z:\VOASRV\HPCHEM1\MSVOA_W\METHOD\SOM2WLM022019S.M
 Quant Title : VOC Analysis
 QLast Update : Tue Mar 05 05:37:38 2019
 Response via : Initial Calibration

Internal Standards	R.T.	QIon	Response	Conc	Units	Dev(Min)
1) 1,4-Difluorobenzene	8.84	114	266941	25.00	ug/L	0.00
28) Chlorobenzene-d5	11.63	117	210239	25.00	ug/L	0.00
60) 1,4-Dichlorobenzene-d4	13.56	152	62376	25.00	ug/L	0.00

System Monitoring Compounds

4) Vinyl Chloride-d3	2.34	65	96469	23.23	ug/L	0.00
Spiked Amount	25.000	Range	30 - 150	Recovery	=	92.92%
7) Chloroethane-d5	2.88	69	97338	26.11	ug/L	0.00
Spiked Amount	25.000	Range	30 - 150	Recovery	=	104.44%
10) 1,1-Dichloroethene-d2	4.01	63	117838	17.06	ug/L	0.00
Spiked Amount	25.000	Range	45 - 110	Recovery	=	68.24%
20) 2-Butanone-d5	7.08	46	50944	41.14	ug/L	0.00
Spiked Amount	50.000	Range	20 - 135	Recovery	=	82.28%
24) Chloroform-d	7.65	84	163242	25.29	ug/L	0.00
Spiked Amount	25.000	Range	40 - 150	Recovery	=	101.16%
26) 1,2-Dichloroethane-d4	8.31	65	102836	27.00	ug/L	0.00
Spiked Amount	25.000	Range	70 - 130	Recovery	=	108.00%
29) Benzene-d6	8.27	84	317147	31.42	ug/L	0.00
Spiked Amount	25.000	Range	20 - 135	Recovery	=	125.68%
33) 1,2-Dichloropropane-d6	9.27	67	98737	33.39	ug/L	0.00
Spiked Amount	25.000	Range	70 - 120	Recovery	=	133.56%#
37) Toluene-d8	10.32	98	271068	26.82	ug/L	0.00
Spiked Amount	25.000	Range	30 - 130	Recovery	=	107.28%
38) trans-1,3-Dichloropropene-	10.58	79	34246	23.11	ug/L	0.00
Spiked Amount	25.000	Range	30 - 135	Recovery	=	92.44%
39) 2-Hexanone-d5	10.93	63	30387	37.72	ug/L	0.00
Spiked Amount	50.000	Range	20 - 135	Recovery	=	75.44%
48) 1,1,2,2-Tetrachloroethane-	12.69	84	65067	21.92	ug/L	0.00
Spiked Amount	25.000	Range	45 - 120	Recovery	=	87.68%
61) 1,2-Dichlorobenzene-d4	13.86	152	55931	25.16	ug/L	0.00
Spiked Amount	25.000	Range	75 - 120	Recovery	=	100.64%

Target Compounds

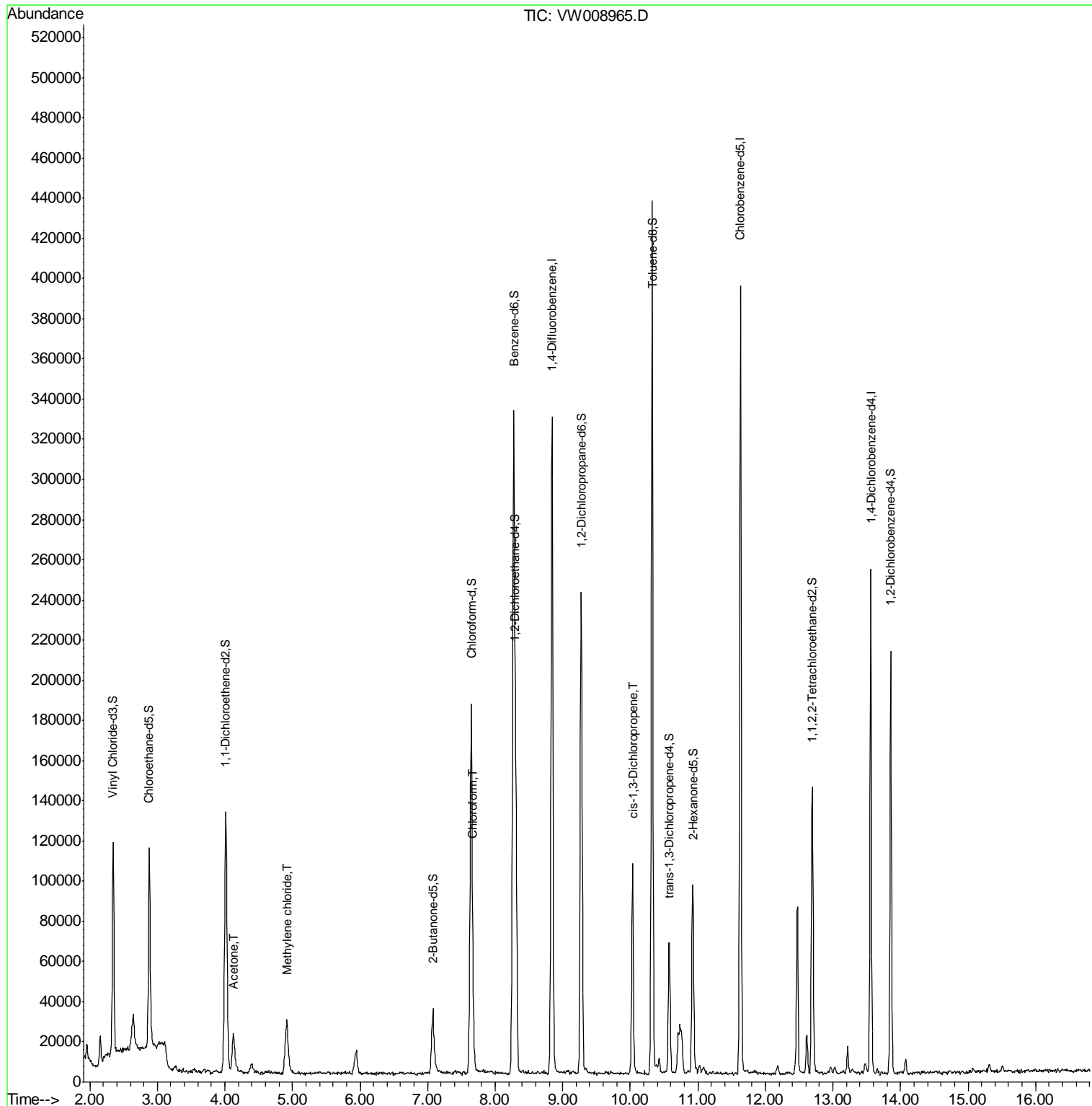
Target Compounds	R.T.	QIon	Response	Conc	Units	Qvalue
13) Acetone	4.13	43	33802	28.773	ug/L	98
16) Methylene chloride	4.92	84	19356	4.484	ug/L	95
25) Chloroform	7.67	83	12096	1.846	ug/L	75
42) cis-1,3-Dichloropropene	10.03	75	2661	0.582	ug/L #	71

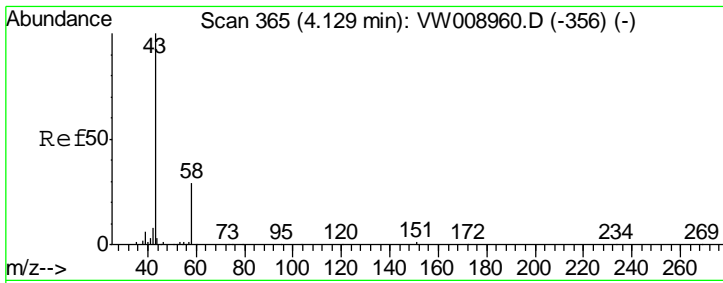
(#) = qualifier out of range (m) = manual integration (+) = signals summed

Data File : VW008965.D
Acq On : 04 Mar 2019 14:34
Operator : SY/VA
Sample : K1657-06
Misc : 6.25G/10ML/MSVOA_W/SOIL
ALS Vial : 1 Sample Multiplier: 1

Instrument :
MSVOA_W
Client Sampled :
DB650RE

Quant Time: Mar 05 05:40:37 2019
Quant Method : Z:\VOASRV\HPCHEM1\MSVOA_W\METHOD\SOM2WLM022019S.M
Quant Title : VOC Analysis
QLast Update : Tue Mar 05 05:37:38 2019
Response via : Initial Calibration

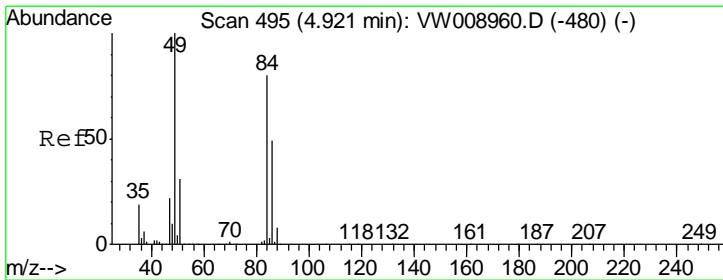
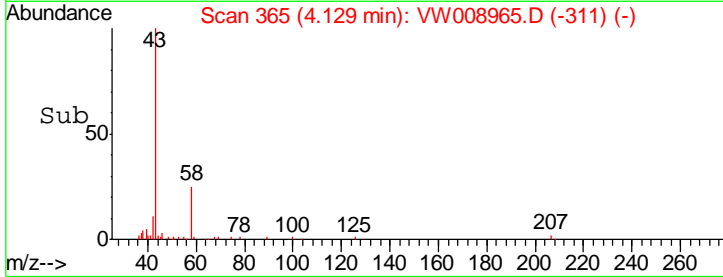
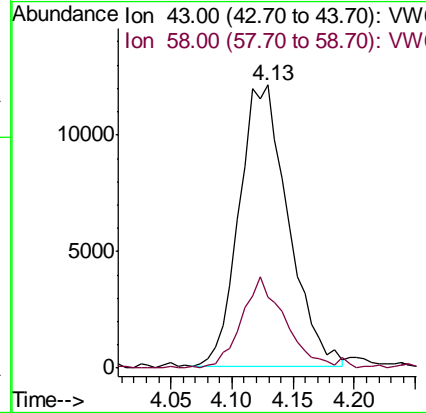
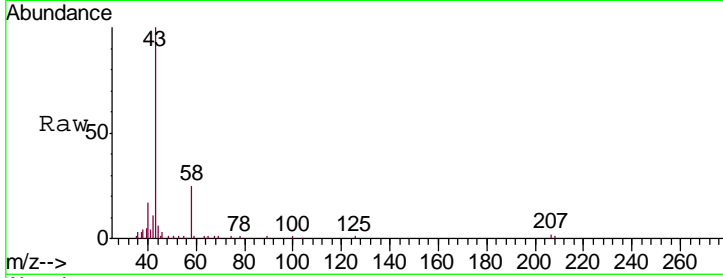




#13
 Acetone
 Concen: 28.773 ug/L
 RT: 4.13 min Scan# 365
 Delta R.T. 0.00 min
 Lab File: VW008965.D
 Acq: 04 Mar 2019 14:34

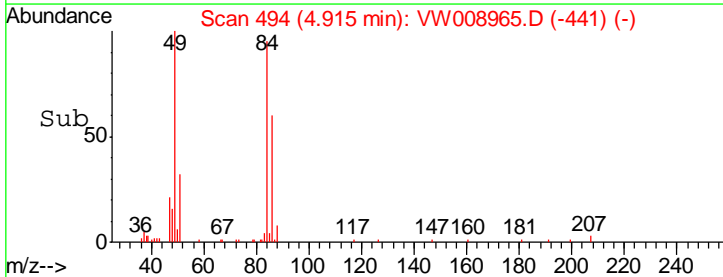
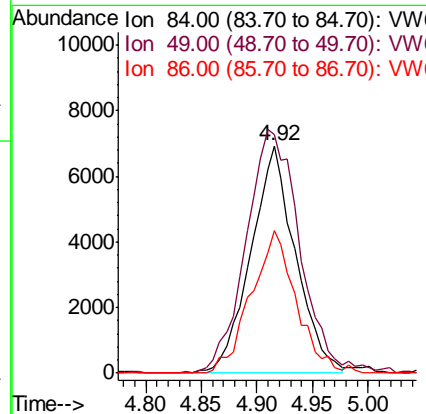
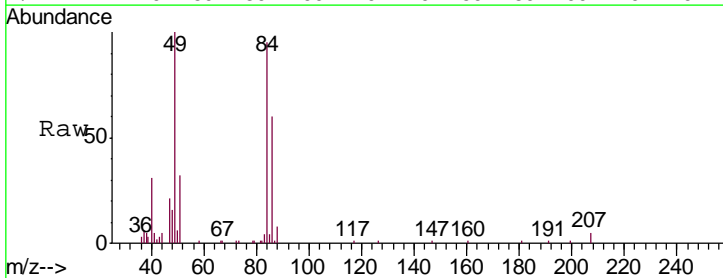
Instrument :
 MSVOA_W
 ClientSampleID :
 DB650RE

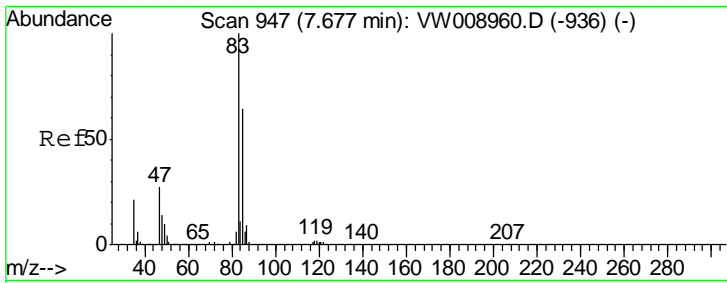
Tgt Ion	Resp	Lower	Upper
43	33802		
58	28.3	0.0	58.6



#16
 Methylene chloride
 Concen: 4.484 ug/L
 RT: 4.92 min Scan# 494
 Delta R.T. -0.01 min
 Lab File: VW008965.D
 Acq: 04 Mar 2019 14:34

Tgt Ion	Resp	Lower	Upper
84	19356		
49	104.9	79.2	147.0
86	62.5	43.2	80.2

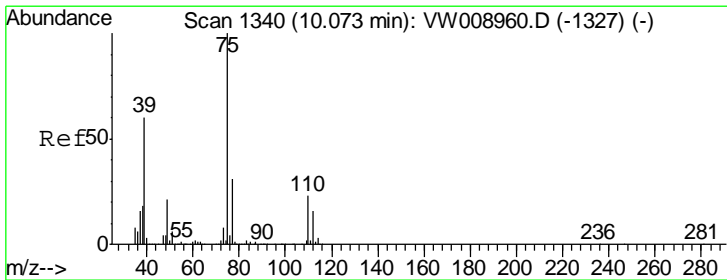
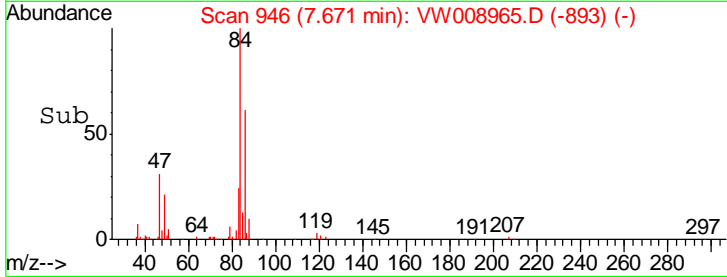
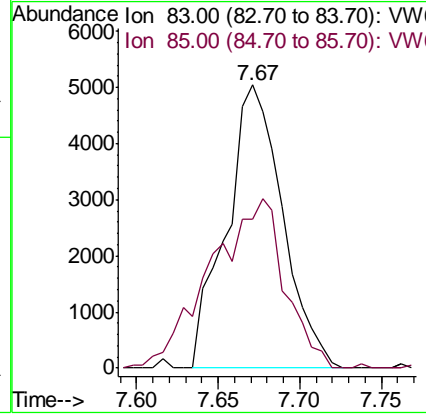
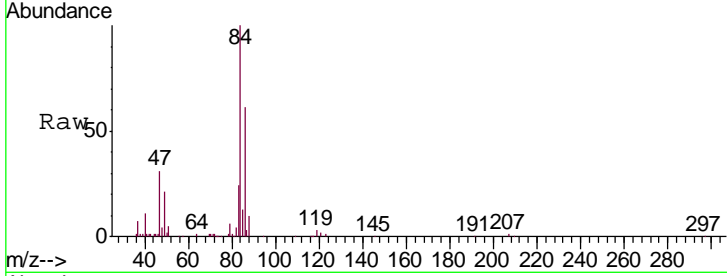




#25
 Chloroform
 Concen: 1.846 ug/L
 RT: 7.67 min Scan# 946
 Delta R.T. -0.01 min
 Lab File: VW008965.D
 Acq: 04 Mar 2019 14:34

Instrument :
 MSVOA_W
 ClientSampled :
 DB650RE

Tgt Ion: 83 Resp: 12096
 Ion Ratio Lower Upper
 83 100
 85 46.0 45.8 85.2



#42
 cis-1,3-Dichloropropene
 Concen: 0.582 ug/L
 RT: 10.03 min Scan# 1333
 Delta R.T. -0.04 min
 Lab File: VW008965.D
 Acq: 04 Mar 2019 14:34

Tgt Ion: 75 Resp: 2661
 Ion Ratio Lower Upper
 75 100
 77 49.4 23.0 42.8#

