

Data Path : Z:\voasrv\HPCHEM1\MSVOA_W\Data\VW030623\
 Data File : VW025375.D
 Acq On : 06 Mar 2023 10:26
 Operator : SY/MD
 Sample : VSTD10035
 Misc : 5.00g/10mL/MSVOA_W/SOIL
 ALS Vial : 1 Sample Multiplier: 1

Instrument :
 MSVOA_W
 ClientSampleId :
 VSTD100435

Quant Time: Mar 07 04:53:02 2023
 Quant Method : Z:\voasrv\HPCHEM1\MSVOA_W\Method\SFAMWLM030623SMA.M
 Quant Title : SFAM01.0
 QLast Update : Tue Mar 07 04:37:49 2023
 Response via : Initial Calibration

Compound	R.T.	QIon	Response	Conc	Units	Dev(Min)
Internal Standards						
1) 1,4-Difluorobenzene	8.843	114	808749	25.000	ug/L	0.00
28) Chlorobenzene-d5	11.629	117	718105	25.000	ug/L	0.00
58) 1,4-Dichlorobenzene-d4	13.550	152	337473	25.000	ug/L	0.00
System Monitoring Compounds						
4) Vinyl Chloride-d3	2.369	65	1276437	94.912	ug/L	0.00
7) Chloroethane-d5	2.893	69	906821	93.631	ug/L	0.00
11) 1,1-Dichloroethene-d2	4.027	63	2508005	96.565	ug/L	0.00
21) 2-Butanone-d5	7.075	46	650804	193.638	ug/L	0.00
24) Chloroform-d	7.648	84	2182445	93.607	ug/L	0.00
26) 1,2-Dichloroethane-d4	8.307	65	1134174	90.632	ug/L	0.00
32) Benzene-d6	8.276	84	4552479	92.780	ug/L	0.00
36) 1,2-Dichloropropane-d6	9.276	67	1419981	93.578	ug/L	0.00
41) Toluene-d8	10.325	98	4111676	95.041	ug/L	0.00
43) trans-1,3-Dichloroprop...	10.575	79	608483	100.667	ug/L	0.00
47) 2-Hexanone-d5	10.922	63	456588	209.177	ug/L	0.00
56) 1,1,2,2-Tetrachloroeth...	12.690	84	1017874	91.528	ug/L	0.00
66) 1,2-Dichlorobenzene-d4	13.848	152	1208571	96.302	ug/L	0.00
Target Compounds						
2) Dichlorodifluoromethane	2.021	85	1037386	115.068	ug/L	98
3) Chloromethane	2.228	50	1253424	114.027	ug/L	97
5) Vinyl chloride	2.375	62	1320150	106.303	ug/L	98
6) Bromomethane	2.789	94	699809	105.695	ug/L	99
8) Chloroethane	2.936	64	751027	105.220	ug/L	96
9) Trichlorofluoromethane	3.271	101	1158298	107.758	ug/L	100
10) 1,1,2-Trichloro-1,2,2-...	4.076	101	1052869	101.004	ug/L	97
12) 1,1-Dichloroethene	4.045	96	1051317	104.228	ug/L	86
13) Acetone	4.118	43	567436	178.834	ug/L	98
14) Carbon disulfide	4.393	76	3478195	110.922	ug/L	99
15) Methyl Acetate	4.667	43	552071	91.550	ug/L	100
16) Methylene chloride	4.917	84	1037890	92.163	ug/L	97
17) trans-1,2-Dichloroethene	5.429	96	1101945	104.229	ug/L	99
18) Methyl tert-butyl Ether	5.429	73	1613328	101.362	ug/L	99
19) 1,1-Dichloroethane	6.222	63	2185002	99.802	ug/L	99
20) cis-1,2-Dichloroethene	7.173	96	1198596	103.315	ug/L #	97
22) 2-Butanone	7.167	43	782629	190.671	ug/L	99
23) Bromochloromethane	7.514	128	490740	98.633	ug/L	98
25) Chloroform	7.679	83	1979322	96.171	ug/L	98
27) 1,2-Dichloroethane	8.398	62	1337580	97.386	ug/L	99
29) Cyclohexane	7.959	56	2219067	109.475	ug/L	99
30) 1,1,1-Trichloroethane	7.874	97	1642708	96.229	ug/L	99
31) Carbon tetrachloride	8.069	117	1532696	100.164	ug/L	99
33) Benzene	8.325	78	4525559	98.571	ug/L	100
34) Trichloroethene	9.093	95	1198340	99.446	ug/L	98
35) Methylcyclohexane	9.337	83	2225278	106.235	ug/L	98
37) 1,2-Dichloropropane	9.367	63	1206241	95.447	ug/L	100
38) Bromodichloromethane	9.642	83	1438921	97.629	ug/L	99
39) cis-1,3-Dichloropropene	10.069	75	1922986	105.622	ug/L	99
40) 4-Methyl-2-pentanone	10.209	43	1549466	203.993	ug/L	99
42) Toluene	10.386	91	4744534	100.088	ug/L	99
44) trans-1,3-Dichloropropene	10.605	75	1594136	104.556	ug/L	100

Data Path : Z:\voasrv\HPCHEM1\MSVOA_W\Data\VW030623\
 Data File : VW025375.D
 Acq On : 06 Mar 2023 10:26
 Operator : SY/MD
 Sample : VSTD10035
 Misc : 5.00g/10mL/MSVOA_W/SOIL
 ALS Vial : 1 Sample Multiplier: 1

Instrument :
 MSVOA_W
 ClientSampleId :
 VSTD100435

Quant Time: Mar 07 04:53:02 2023
 Quant Method : Z:\voasrv\HPCHEM1\MSVOA_W\Method\SFAMWLM030623SMA.M
 Quant Title : SFAM01.0
 QLast Update : Tue Mar 07 04:37:49 2023
 Response via : Initial Calibration

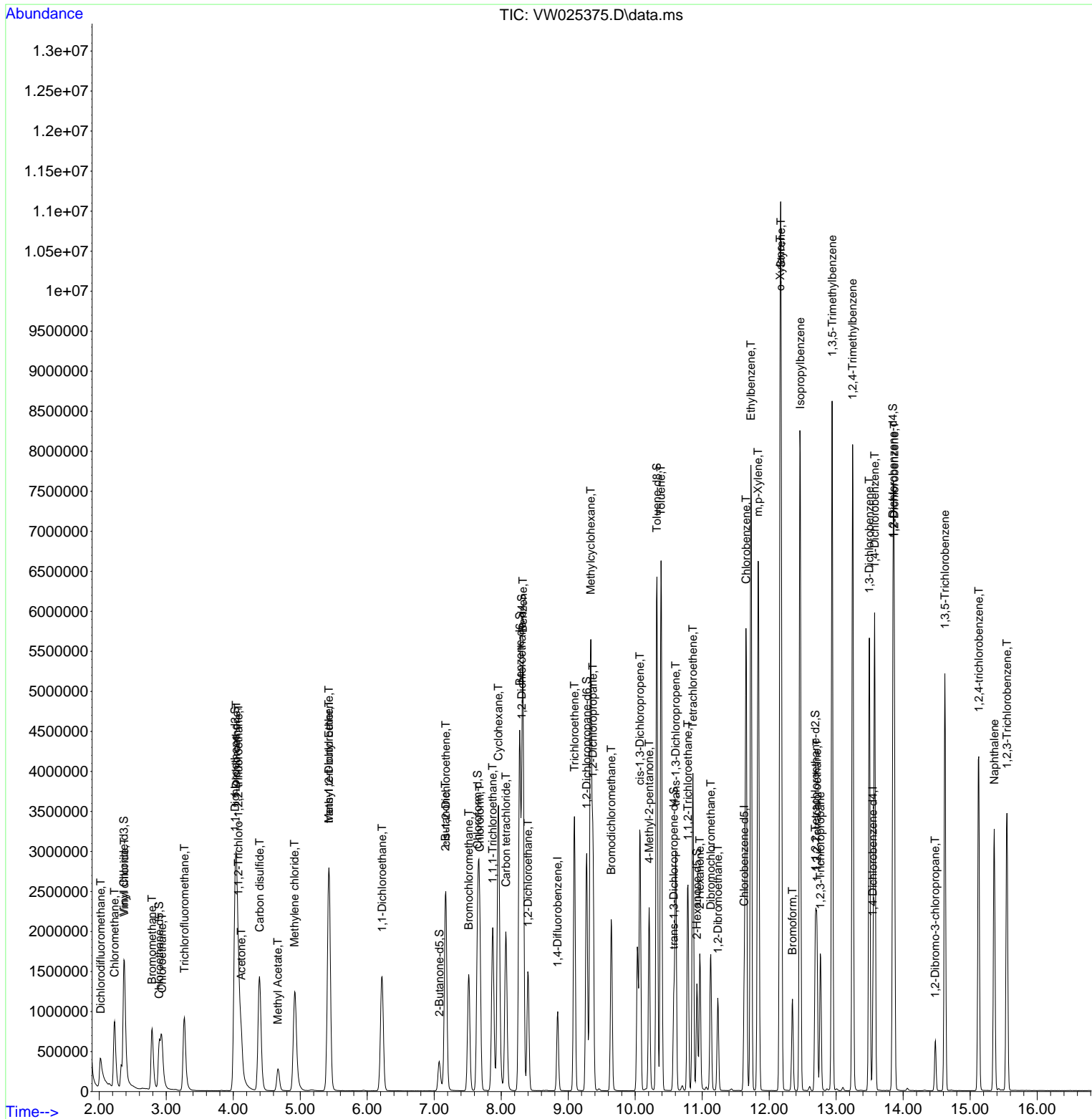
Compound	R.T.	QIon	Response	Conc	Units	Dev(Min)
45) 1,1,2-Trichloroethane	10.788	97	810072	95.448	ug/L	99
46) Tetrachloroethene	10.861	164	884656	103.178	ug/L	97
48) 2-Hexanone	10.965	43	1119557	204.868	ug/L	100
49) Dibromochloromethane	11.129	129	883579	97.437	ug/L	99
50) 1,2-Dibromoethane	11.233	107	769644	97.969	ug/L	97
51) Chlorobenzene	11.654	112	2932208	97.463	ug/L	98
52) Ethylbenzene	11.727	91	5473513	101.241	ug/L	95
53) m,p-Xylene	11.836	106	2053578	102.985	ug/L	98
54) o-Xylene	12.166	106	1957495	104.322	ug/L	92
55) Styrene	12.178	104	3313514	103.408	ug/L	96
57) 1,1,2,2-Tetrachloroethane	12.714	83	977581	92.599	ug/L	98
59) Bromoform	12.349	173	494337	101.529	ug/L	97
60) Isopropylbenzene	12.464	105	5399776	107.335	ug/L	99
61) 1,2,3-Trichloropropane	12.763	75	705724	95.982	ug/L	99
62) 1,3,5-Trimethylbenzene	12.940	105	4424362	111.045	ug/L	99
63) 1,2,4-Trimethylbenzene	13.245	105	4280031	109.042	ug/L	100
64) 1,3-Dichlorobenzene	13.495	146	2164698	101.547	ug/L	95
65) 1,4-Dichlorobenzene	13.574	146	2172561	99.357	ug/L	97
67) 1,2-Dichlorobenzene	13.867	146	1935831	101.251	ug/L	93
68) 1,2-Dibromo-3-chloropr...	14.476	75	164219	96.476	ug/L	97
69) 1,3,5-Trichlorobenzene	14.623	180	1471734	101.563	ug/L	98
70) 1,2,4-trichlorobenzene	15.129	180	1282663	106.757	ug/L	100
71) Naphthalene	15.360	128	2676943	112.874	ug/L	99
72) 1,2,3-Trichlorobenzene	15.549	180	1135988	105.267	ug/L	97

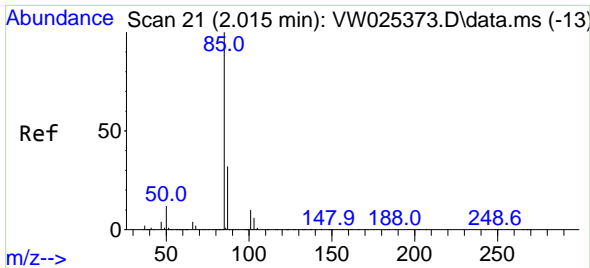
(#) = qualifier out of range (m) = manual integration (+) = signals summed

Data Path : Z:\voasrv\HPCHEM1\MSVOA_W\Data\VW030623\
 Data File : VW025375.D
 Acq On : 06 Mar 2023 10:26
 Operator : SY/MD
 Sample : VSTD10035
 Misc : 5.00g/10mL/MSVOA_W/SOIL
 ALS Vial : 1 Sample Multiplier: 1

Instrument :
 MSVOA_W
 ClientSampleId :
 VSTD100435

Quant Time: Mar 07 04:53:02 2023
 Quant Method : Z:\voasrv\HPCHEM1\MSVOA_W\Method\SFAMWLM030623SMA.M
 Quant Title : SFAM01.0
 QLast Update : Tue Mar 07 04:37:49 2023
 Response via : Initial Calibration

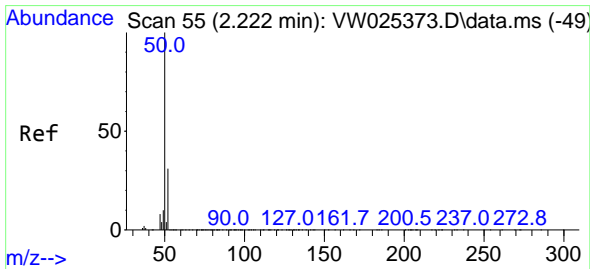
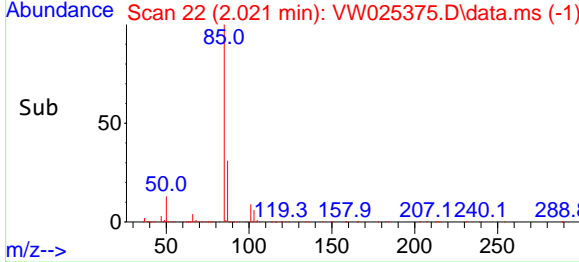
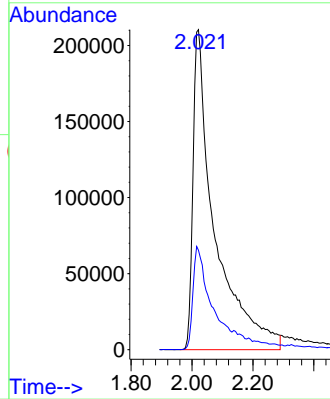
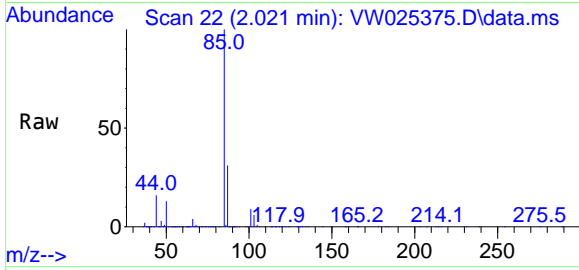




#2
 Dichlorodifluoromethane
 Concen: 115.068 ug/L
 RT: 2.021 min Scan# 21
 Delta R.T. 0.006 min
 Lab File: VW025375.D
 Acq: 06 Mar 2023 10:26

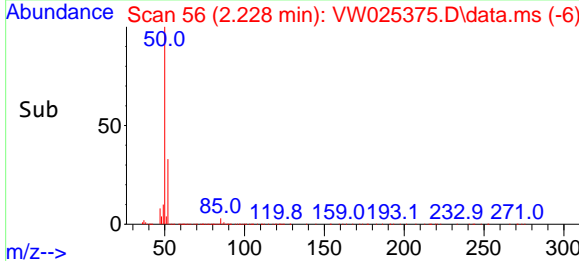
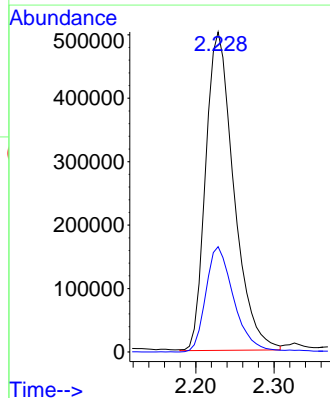
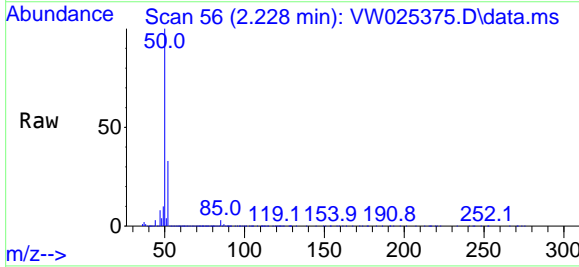
Instrument :
 MSVOA_W
 ClientSampleId :
 VSTD100435

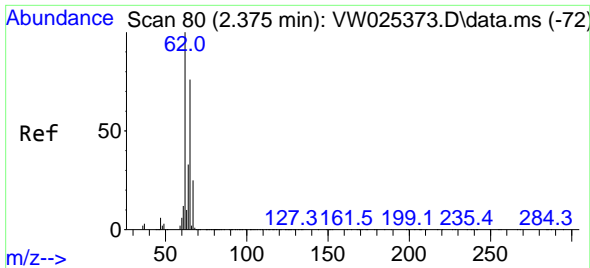
Tgt Ion: 85 Resp: 1037386
 Ion Ratio Lower Upper
 85 100
 87 26.5 20.5 30.7



#3
 Chloromethane
 Concen: 114.027 ug/L
 RT: 2.228 min Scan# 56
 Delta R.T. 0.006 min
 Lab File: VW025375.D
 Acq: 06 Mar 2023 10:26

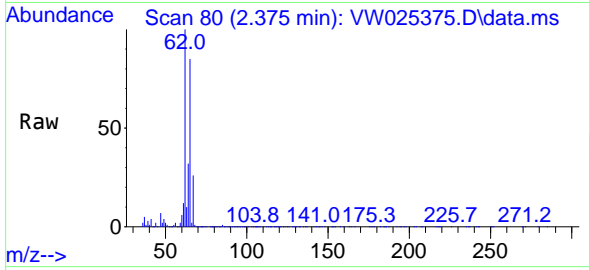
Tgt Ion: 50 Resp: 1253424
 Ion Ratio Lower Upper
 50 100
 52 32.9 21.9 40.7



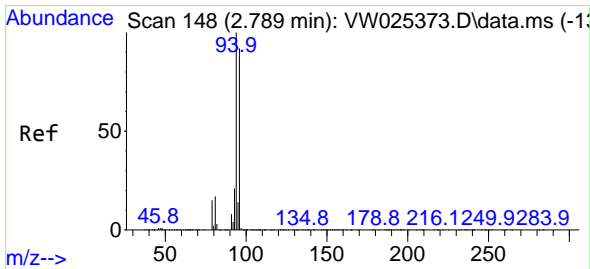
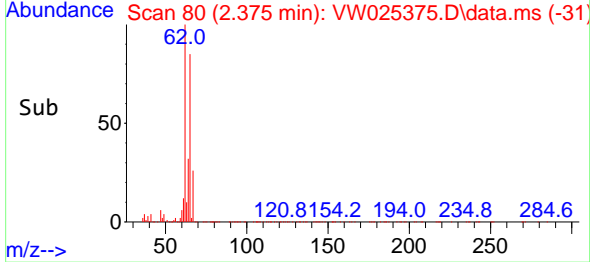
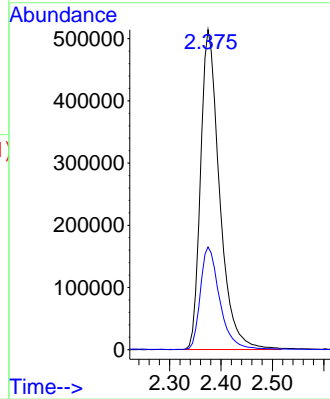


#5
 Vinyl chloride
 Concen: 106.303 ug/L
 RT: 2.375 min Scan# 80
 Delta R.T. -0.000 min
 Lab File: VW025375.D
 Acq: 06 Mar 2023 10:26

Instrument :
 MSVOA_W
 ClientSampleId :
 VSTD100435

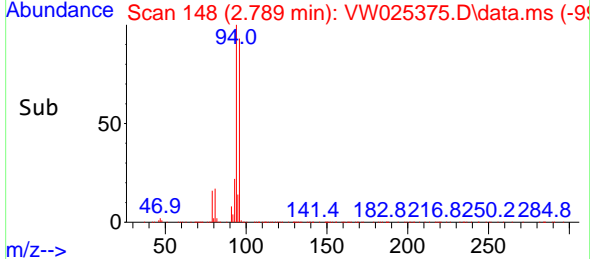
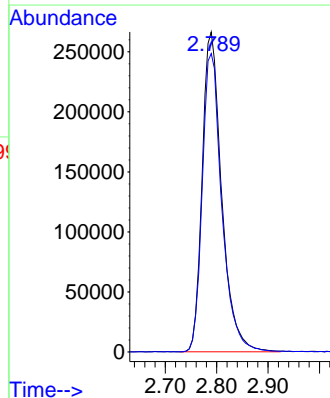
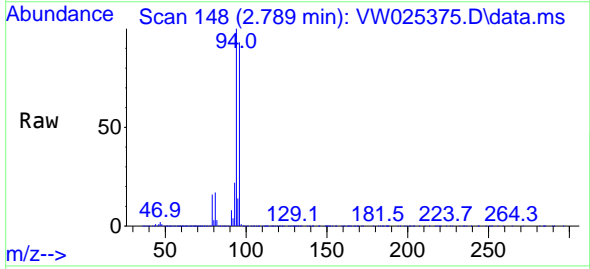


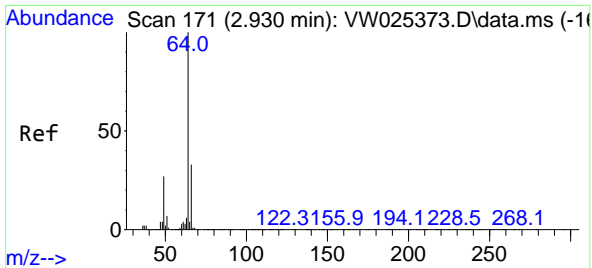
Tgt Ion: 62 Resp: 1320150
 Ion Ratio Lower Upper
 62 100
 64 32.1 23.4 43.6



#6
 Bromomethane
 Concen: 105.695 ug/L
 RT: 2.789 min Scan# 148
 Delta R.T. 0.000 min
 Lab File: VW025375.D
 Acq: 06 Mar 2023 10:26

Tgt Ion: 94 Resp: 699809
 Ion Ratio Lower Upper
 94 100
 96 93.2 64.5 119.9

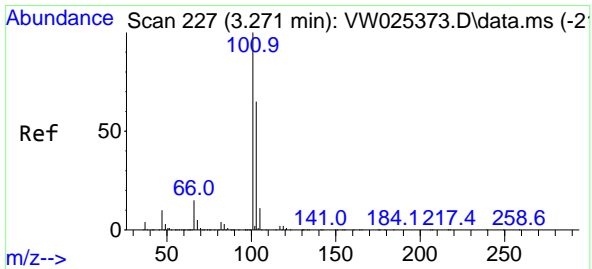
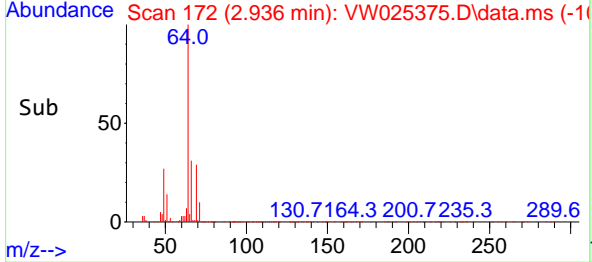
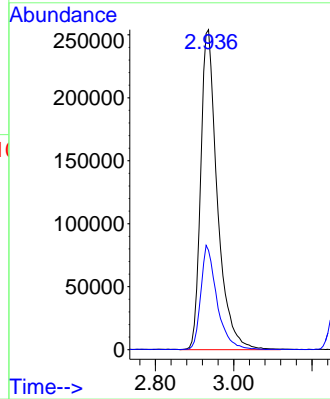
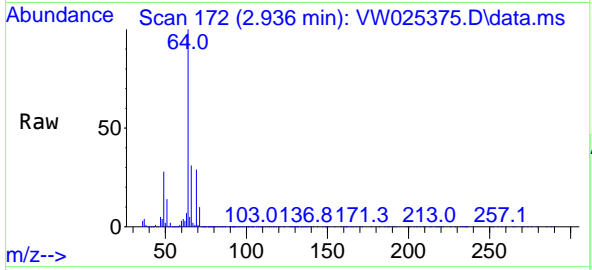




#8
 Chloroethane
 Concen: 105.220 ug/L
 RT: 2.936 min Scan# 171
 Delta R.T. 0.006 min
 Lab File: VW025375.D
 Acq: 06 Mar 2023 10:26

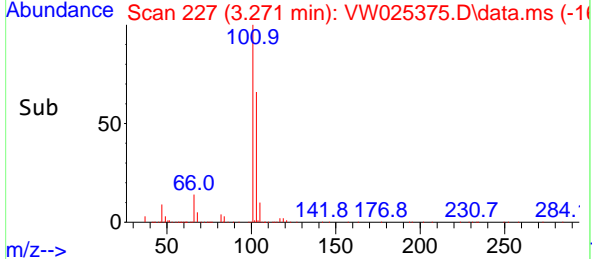
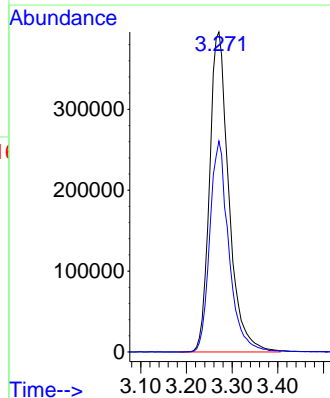
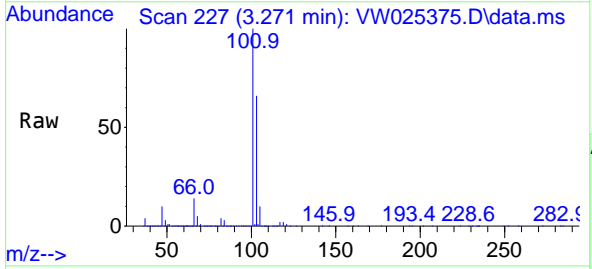
Instrument : MSVOA_W
 ClientSampleId : VSTD100435

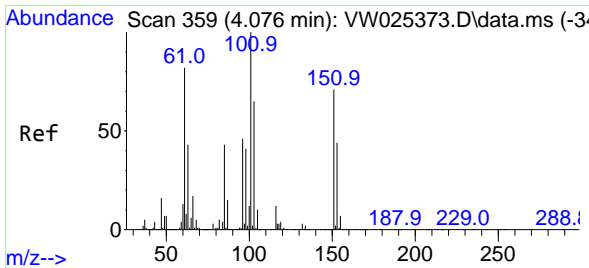
Tgt Ion: 64 Resp: 751027
 Ion Ratio Lower Upper
 64 100
 66 31.1 23.3 43.3



#9
 Trichlorofluoromethane
 Concen: 107.758 ug/L
 RT: 3.271 min Scan# 227
 Delta R.T. -0.000 min
 Lab File: VW025375.D
 Acq: 06 Mar 2023 10:26

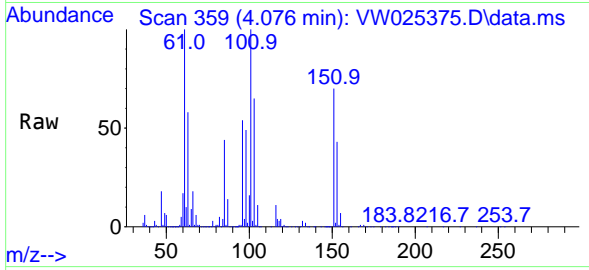
Tgt Ion: 101 Resp: 1158298
 Ion Ratio Lower Upper
 101 100
 103 64.7 51.5 77.3





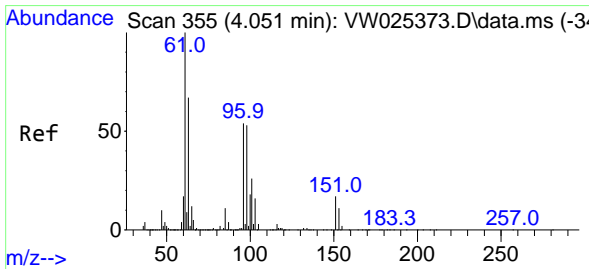
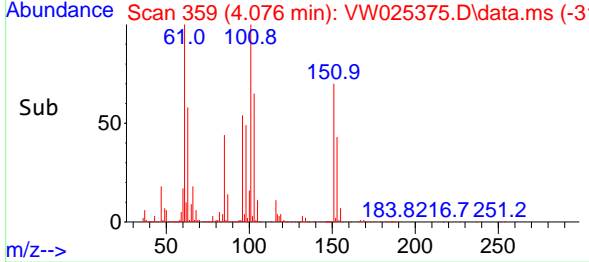
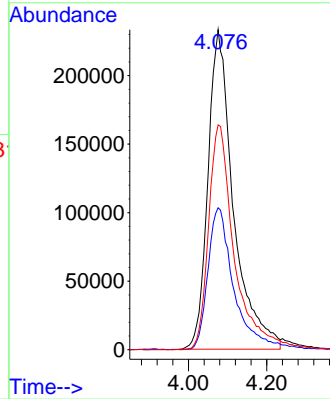
#10
 1,1,2-Trichloro-1,2,2-trifluoroethane
 Concen: 101.004 ug/L
 RT: 4.076 min Scan# 311
 Delta R.T. -0.000 min
 Lab File: VW025375.D
 Acq: 06 Mar 2023 10:26

Instrument : MSVOA_W
 ClientSampleId : VSTD100435

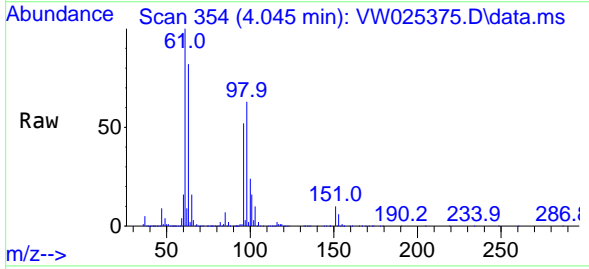


Tgt Ion:101 Resp: 1052869

Ion	Ratio	Lower	Upper
101	100		
85	44.6	35.8	53.8
151	71.5	54.2	81.2

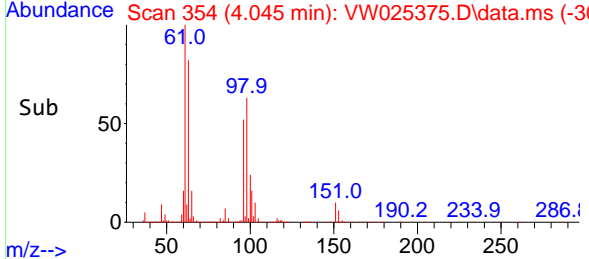
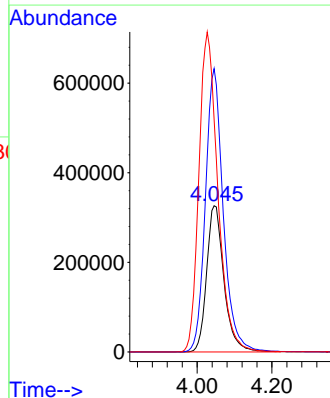


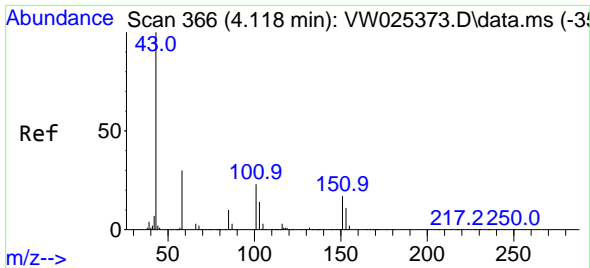
#12
 1,1-Dichloroethene
 Concen: 104.228 ug/L
 RT: 4.045 min Scan# 354
 Delta R.T. -0.006 min
 Lab File: VW025375.D
 Acq: 06 Mar 2023 10:26



Tgt Ion: 96 Resp: 1051317

Ion	Ratio	Lower	Upper
96	100		
61	193.8	130.7	242.7
63	158.9	88.3	164.1

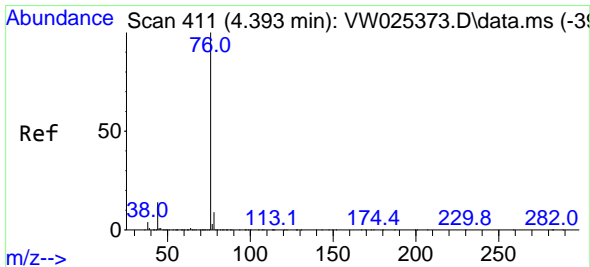
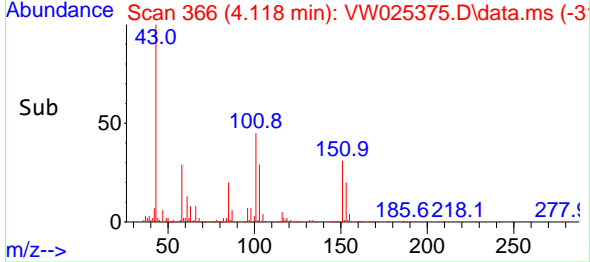
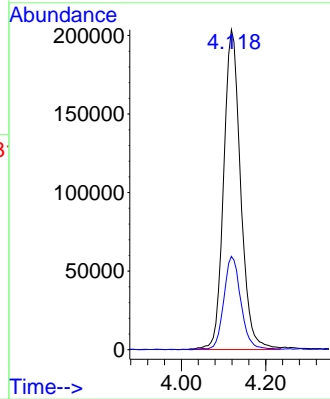
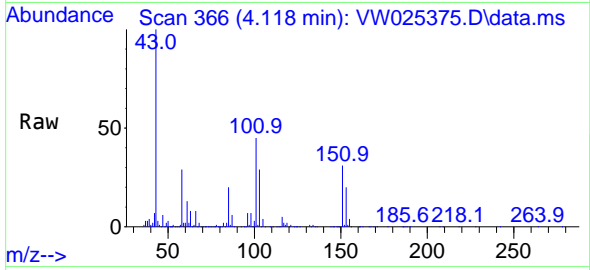




#13
 Acetone
 Concen: 178.834 ug/L
 RT: 4.118 min Scan# 366
 Delta R.T. 0.000 min
 Lab File: VW025375.D
 Acq: 06 Mar 2023 10:26

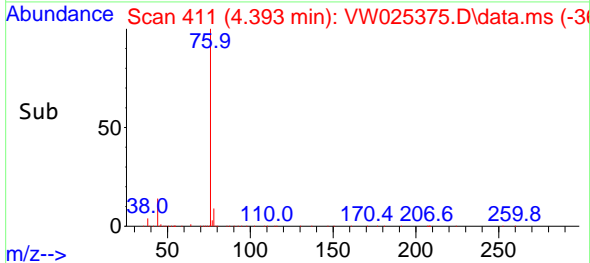
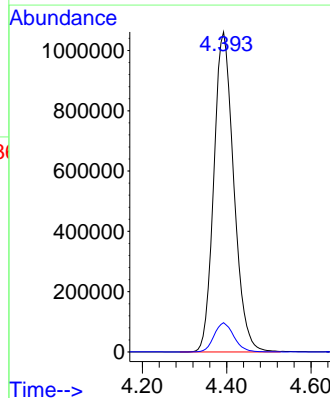
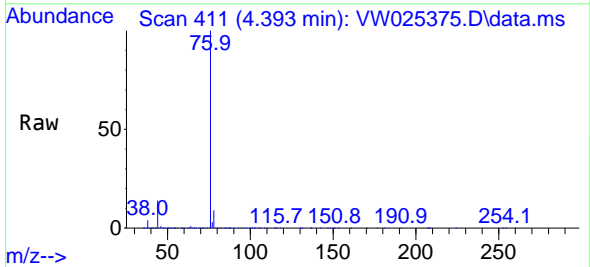
Instrument :
 MSVOA_W
 ClientSampleId :
 VSTD100435

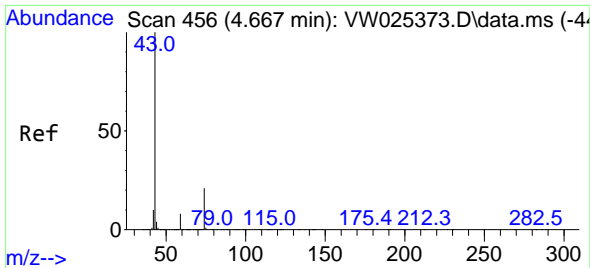
Tgt Ion: 43 Resp: 567436
 Ion Ratio Lower Upper
 43 100
 58 29.0 0.0 60.0



#14
 Carbon disulfide
 Concen: 110.922 ug/L
 RT: 4.393 min Scan# 411
 Delta R.T. -0.000 min
 Lab File: VW025375.D
 Acq: 06 Mar 2023 10:26

Tgt Ion: 76 Resp: 3478195
 Ion Ratio Lower Upper
 76 100
 78 9.2 7.6 11.4

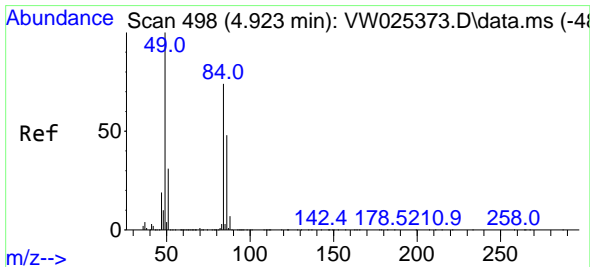
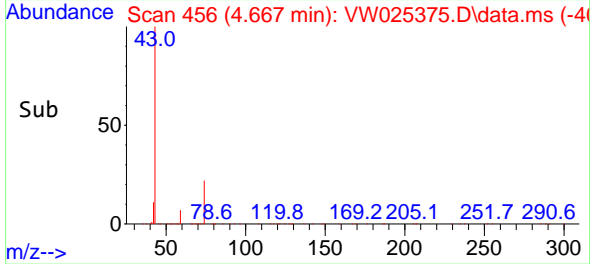
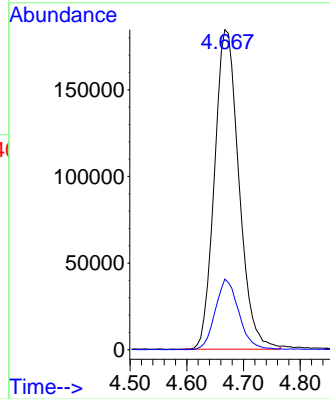
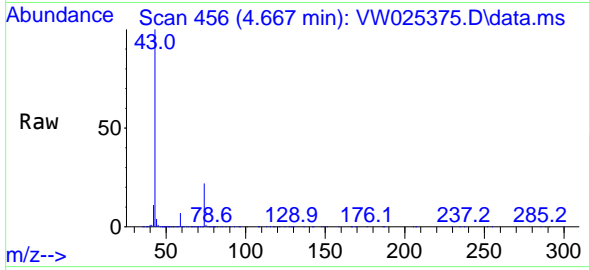




#15
 Methyl Acetate
 Concen: 91.550 ug/L
 RT: 4.667 min Scan# 41
 Delta R.T. 0.000 min
 Lab File: VW025375.D
 Acq: 06 Mar 2023 10:26

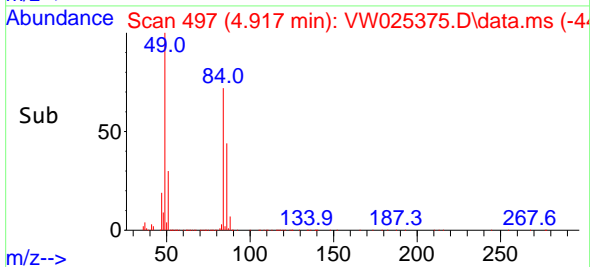
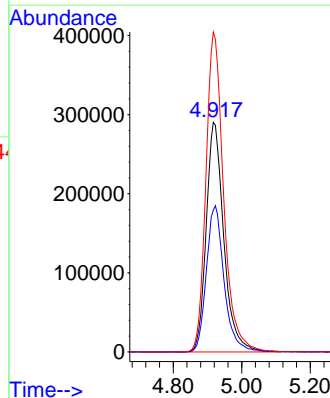
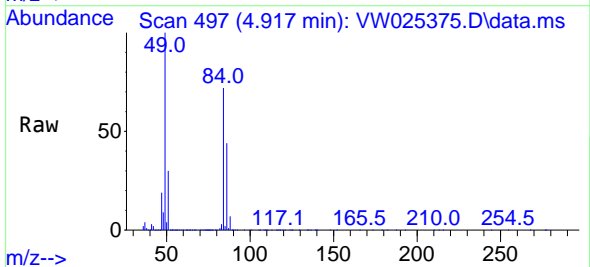
Instrument :
 MSVOA_W
 ClientSampleId :
 VSTD100435

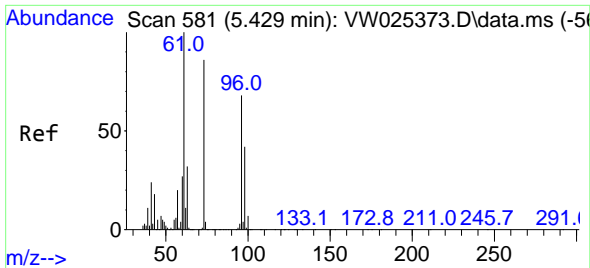
Tgt Ion: 43 Resp: 552071
 Ion Ratio Lower Upper
 43 100
 74 21.3 17.0 25.4



#16
 Methylene chloride
 Concen: 92.163 ug/L
 RT: 4.917 min Scan# 497
 Delta R.T. -0.006 min
 Lab File: VW025375.D
 Acq: 06 Mar 2023 10:26

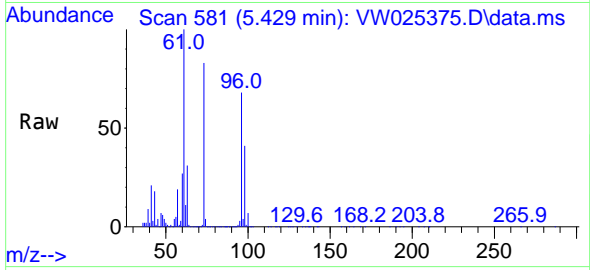
Tgt Ion: 84 Resp: 1037890
 Ion Ratio Lower Upper
 84 100
 86 61.7 45.1 83.7
 49 139.3 94.7 175.9



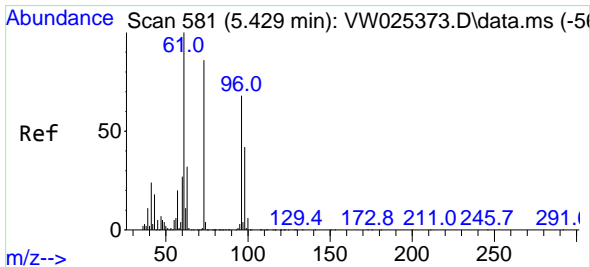
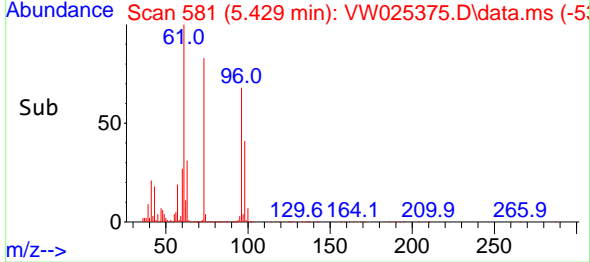
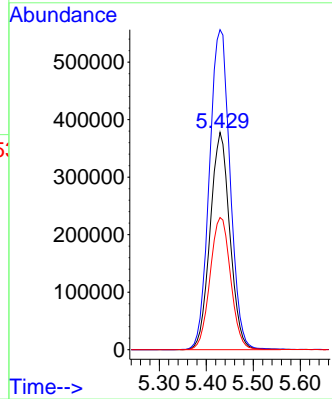


#17
 trans-1,2-Dichloroethene
 Concen: 104.229 ug/L
 RT: 5.429 min Scan# 581
 Delta R.T. 0.000 min
 Lab File: VW025375.D
 Acq: 06 Mar 2023 10:26

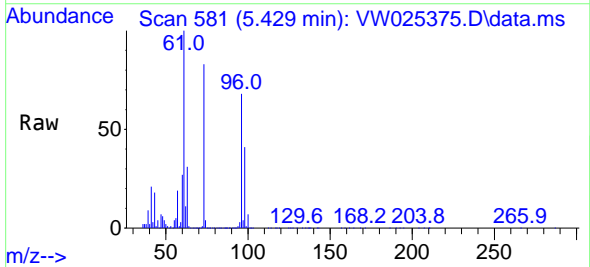
Instrument : MSVOA_W
 ClientSampleId : VSTD100435



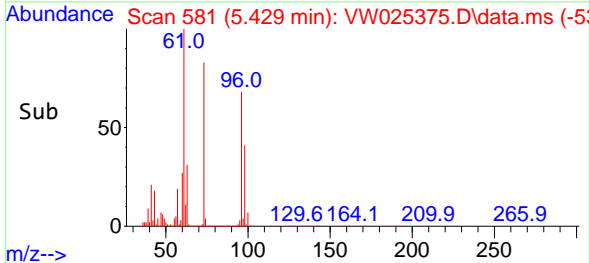
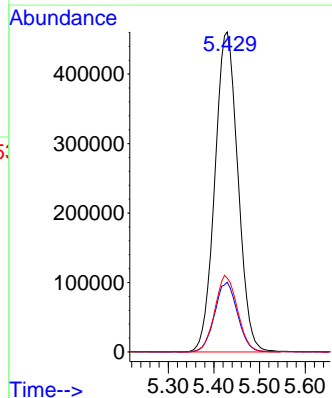
Tgt Ion: 96 Resp: 1101945
 Ion Ratio Lower Upper
 96 100
 61 147.3 103.0 191.4
 98 60.8 43.4 80.6

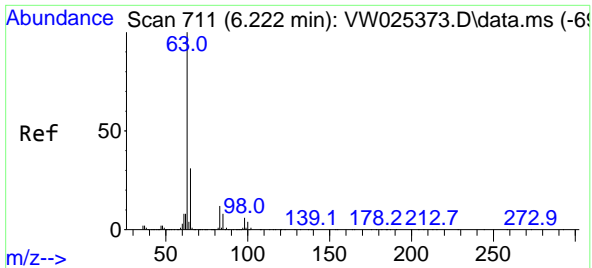


#18
 Methyl tert-butyl Ether
 Concen: 101.362 ug/L
 RT: 5.429 min Scan# 581
 Delta R.T. 0.000 min
 Lab File: VW025375.D
 Acq: 06 Mar 2023 10:26



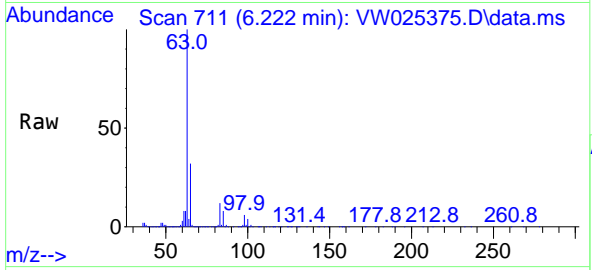
Tgt Ion: 73 Resp: 1613328
 Ion Ratio Lower Upper
 73 100
 43 21.5 17.6 26.4
 57 23.5 18.6 28.0





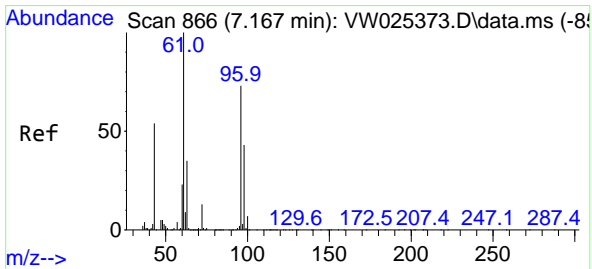
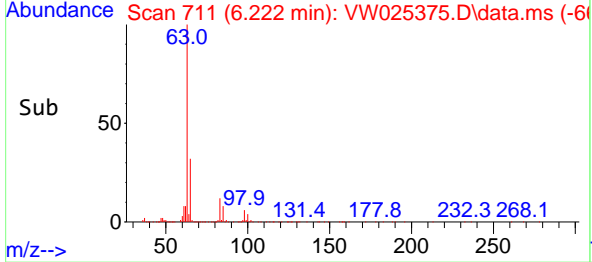
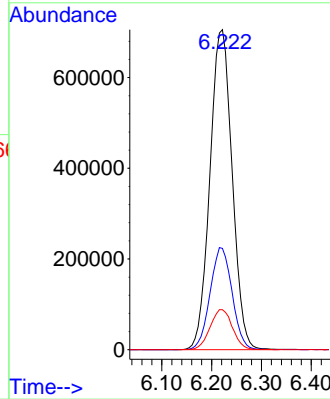
#19
 1,1-Dichloroethane
 Concen: 99.802 ug/L
 RT: 6.222 min Scan# 711
 Delta R.T. -0.000 min
 Lab File: VW025375.D
 Acq: 06 Mar 2023 10:26

Instrument : MSVOA_W
 ClientSampleId : VSTD100435

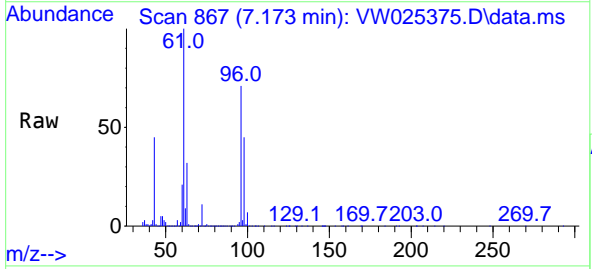


Tgt Ion: 63 Resp: 2185002

Ion	Ratio	Lower	Upper
63	100		
65	31.6	21.7	40.3
83	12.5	8.4	15.6

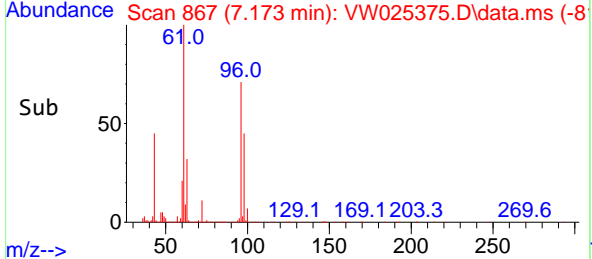
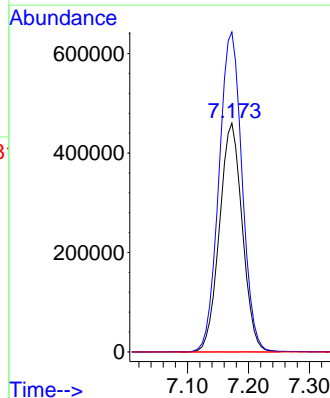


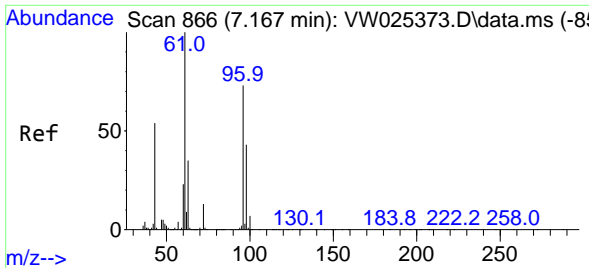
#20
 cis-1,2-Dichloroethene
 Concen: 103.315 ug/L
 RT: 7.173 min Scan# 867
 Delta R.T. 0.006 min
 Lab File: VW025375.D
 Acq: 06 Mar 2023 10:26



Tgt Ion: 96 Resp: 1198596

Ion	Ratio	Lower	Upper
96	100		
61	139.9	95.5	177.4
68	0.0	0.1	0.1

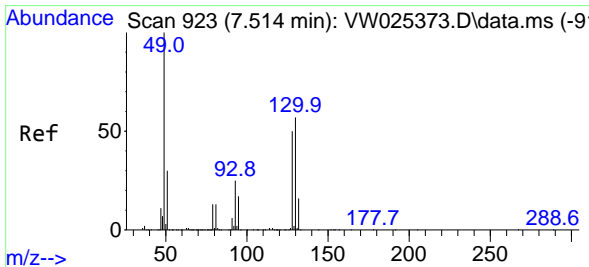
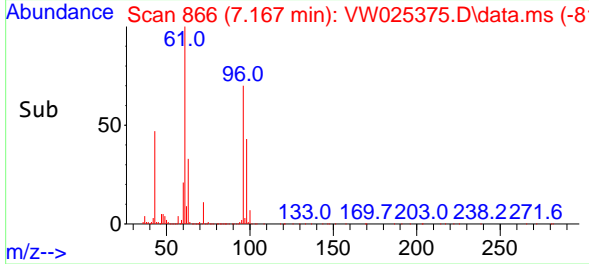
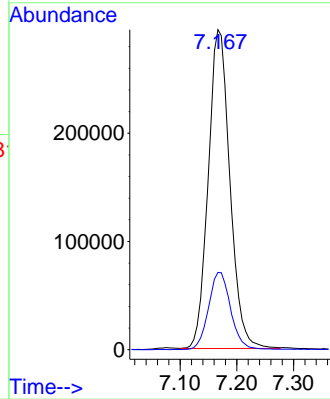
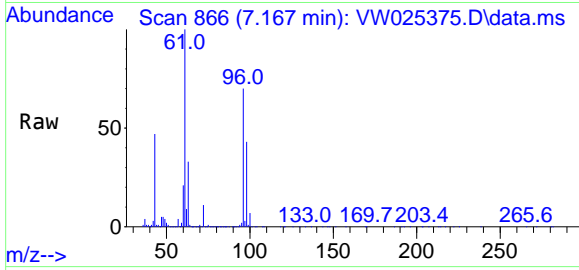




#22
 2-Butanone
 Concen: 190.671 ug/L
 RT: 7.167 min Scan# 866
 Delta R.T. -0.000 min
 Lab File: VW025375.D
 Acq: 06 Mar 2023 10:26

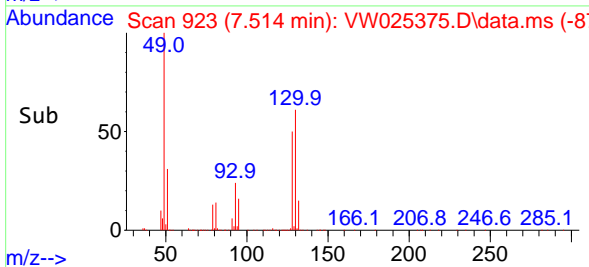
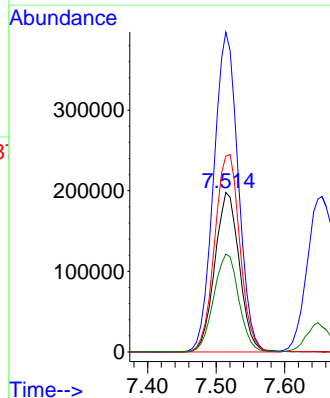
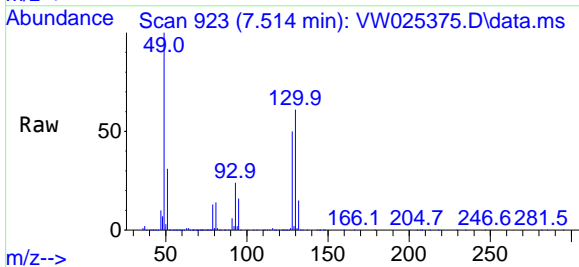
Instrument : MSVOA_W
 ClientSampleId : VSTD100435

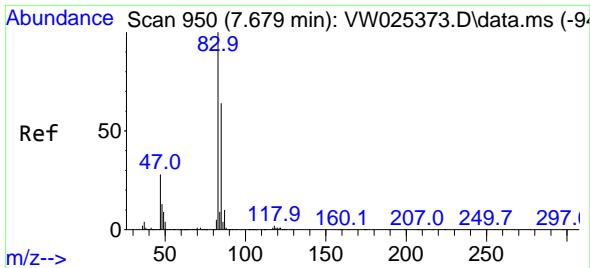
Tgt Ion: 43 Resp: 782629
 Ion Ratio Lower Upper
 43 100
 72 24.7 12.0 36.1



#23
 Bromochloromethane
 Concen: 98.633 ug/L
 RT: 7.514 min Scan# 923
 Delta R.T. 0.000 min
 Lab File: VW025375.D
 Acq: 06 Mar 2023 10:26

Tgt Ion:128 Resp: 490740
 Ion Ratio Lower Upper
 128 100
 49 200.7 140.6 261.0
 130 122.8 80.8 150.0
 51 61.4 48.7 73.1

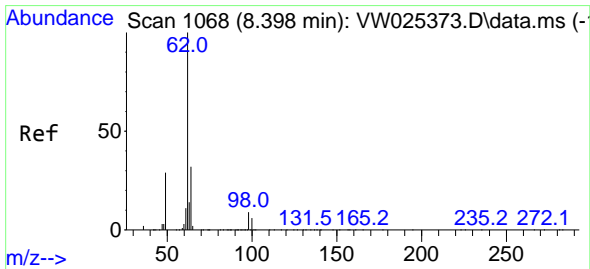
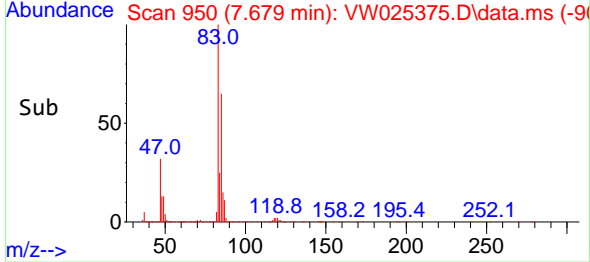
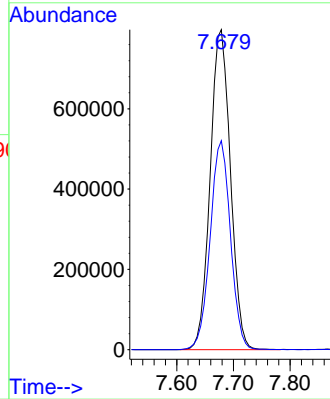
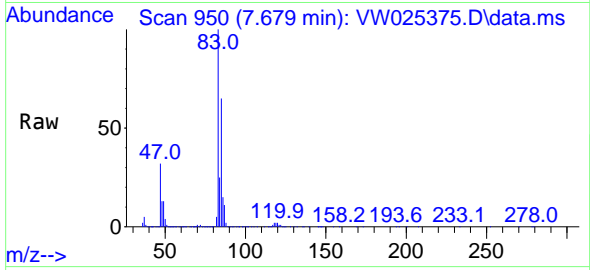




#25
 Chloroform
 Concen: 96.171 ug/L
 RT: 7.679 min Scan# 91
 Delta R.T. -0.000 min
 Lab File: VW025375.D
 Acq: 06 Mar 2023 10:26

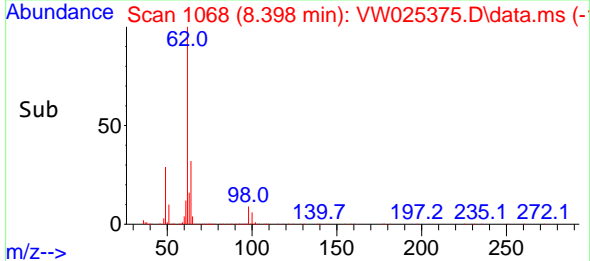
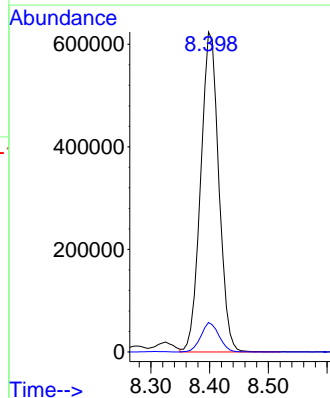
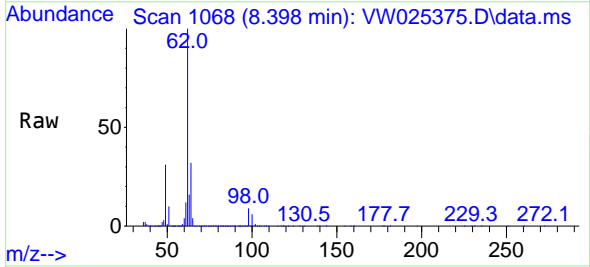
Instrument : MSVOA_W
 ClientSampleId : VSTD100435

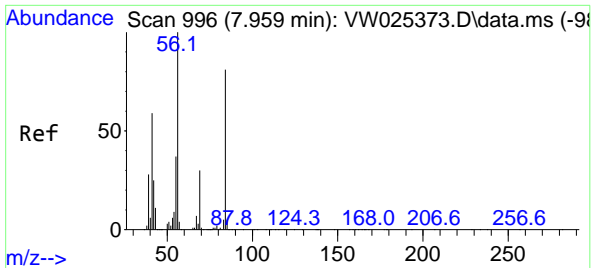
Tgt Ion: 83 Resp: 1979322
 Ion Ratio Lower Upper
 83 100
 85 65.3 44.7 82.9



#27
 1,2-Dichloroethane
 Concen: 97.386 ug/L
 RT: 8.398 min Scan# 1068
 Delta R.T. 0.000 min
 Lab File: VW025375.D
 Acq: 06 Mar 2023 10:26

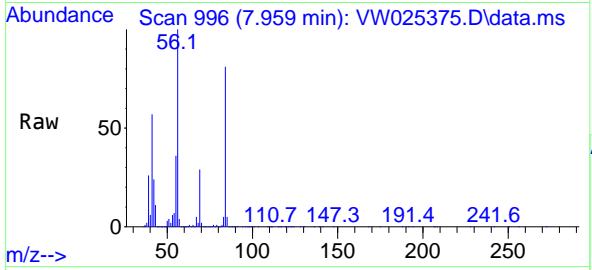
Tgt Ion: 62 Resp: 1337580
 Ion Ratio Lower Upper
 62 100
 98 9.2 7.2 10.8





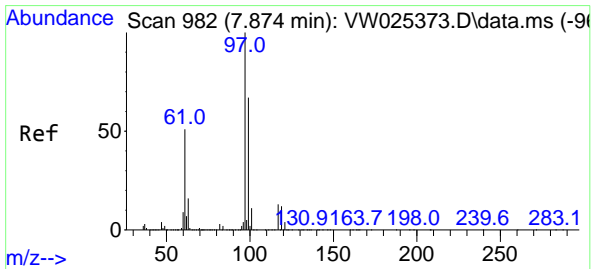
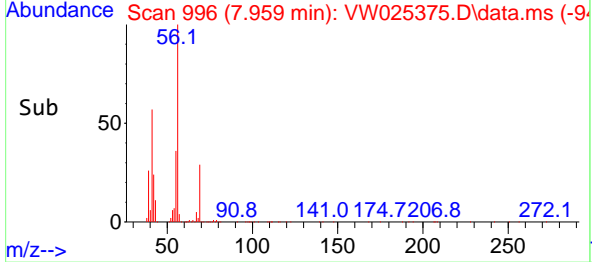
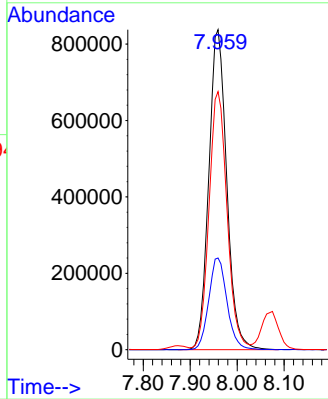
#29
 Cyclohexane
 Concen: 109.475 ug/L
 RT: 7.959 min Scan# 996
 Delta R.T. 0.000 min
 Lab File: VW025375.D
 Acq: 06 Mar 2023 10:26

Instrument : MSVOA_W
 ClientSampleId : VSTD100435



Tgt Ion: 56 Resp: 2219067

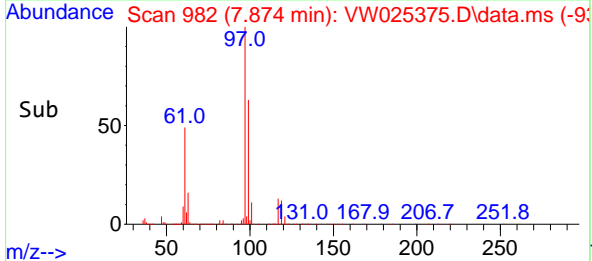
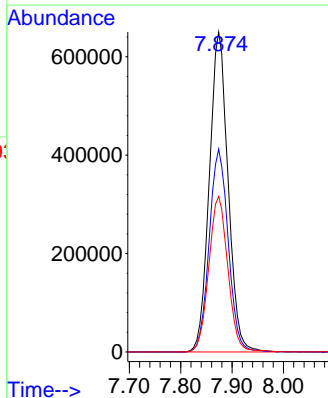
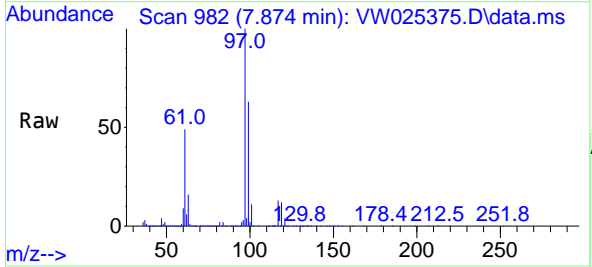
Ion	Ratio	Lower	Upper
56	100		
69	29.2	23.1	34.7
84	81.3	63.9	95.9

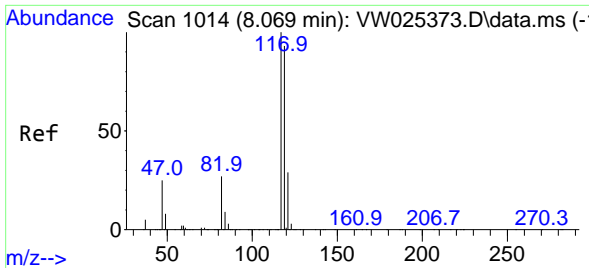


#30
 1,1,1-Trichloroethane
 Concen: 96.229 ug/L
 RT: 7.874 min Scan# 982
 Delta R.T. -0.000 min
 Lab File: VW025375.D
 Acq: 06 Mar 2023 10:26

Tgt Ion: 97 Resp: 1642708

Ion	Ratio	Lower	Upper
97	100		
99	64.5	50.9	76.3
61	49.8	39.8	59.6

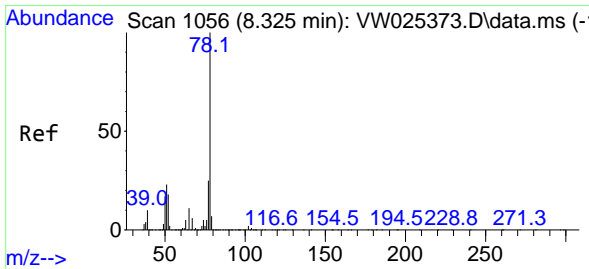
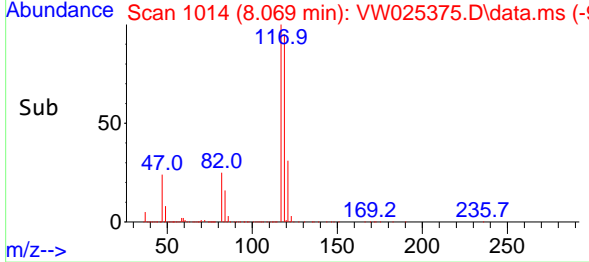
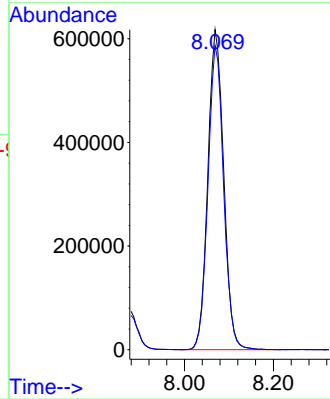
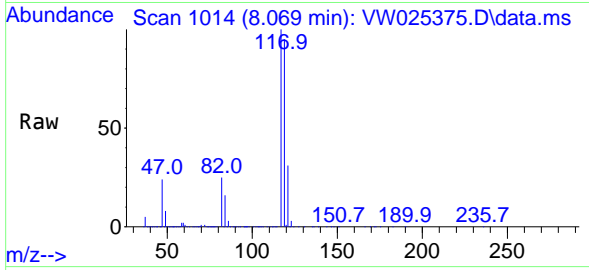




#31
 Carbon tetrachloride
 Concen: 100.164 ug/L
 RT: 8.069 min Scan# 1014
 Delta R.T. -0.000 min
 Lab File: VW025375.D
 Acq: 06 Mar 2023 10:26

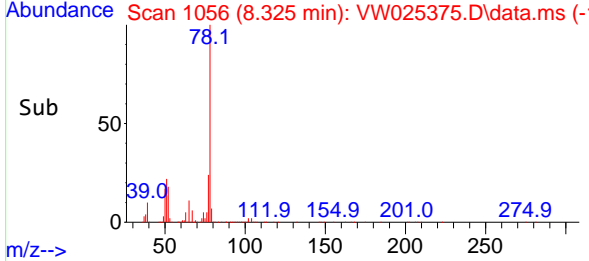
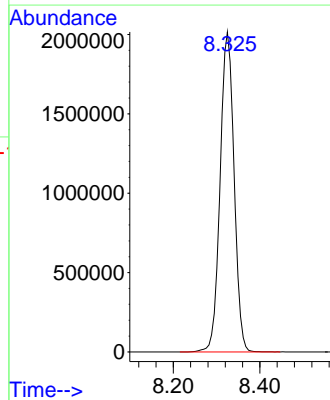
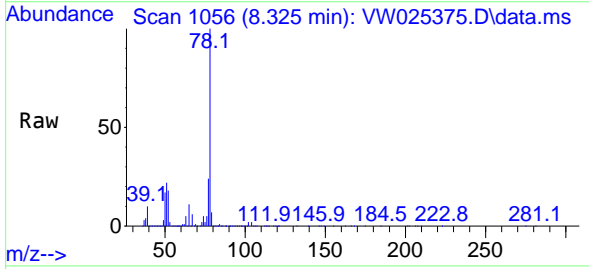
Instrument : MSVOA_W
 ClientSampleId : VSTD100435

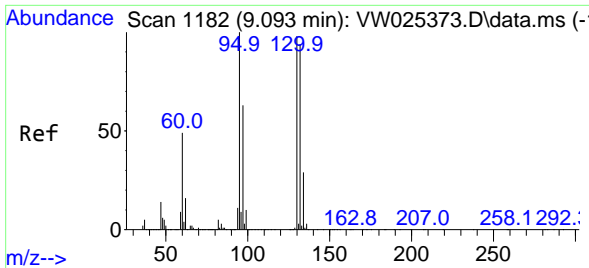
Tgt Ion:117 Resp: 1532696
 Ion Ratio Lower Upper
 117 100
 119 93.8 75.8 113.6



#33
 Benzene
 Concen: 98.571 ug/L
 RT: 8.325 min Scan# 1056
 Delta R.T. -0.000 min
 Lab File: VW025375.D
 Acq: 06 Mar 2023 10:26

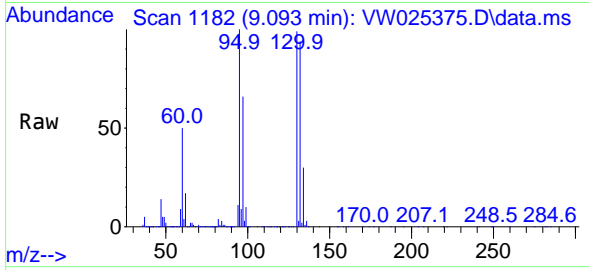
Tgt Ion: 78 Resp: 4525559



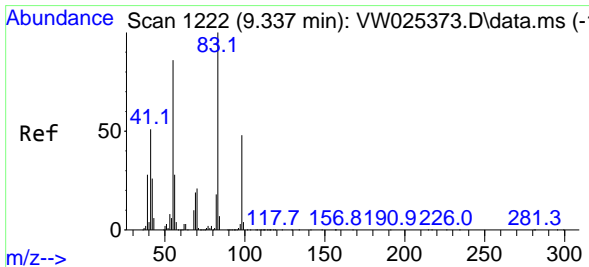
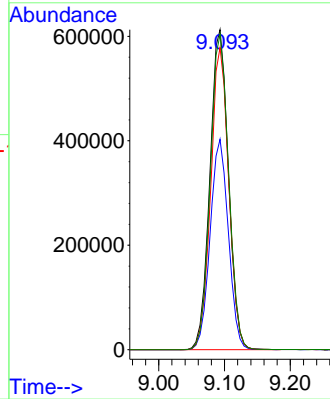
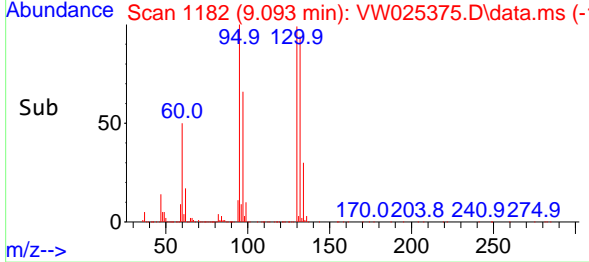


#34
 Trichloroethene
 Concen: 99.446 ug/L
 RT: 9.093 min Scan# 1182
 Delta R.T. 0.000 min
 Lab File: VW025375.D
 Acq: 06 Mar 2023 10:26

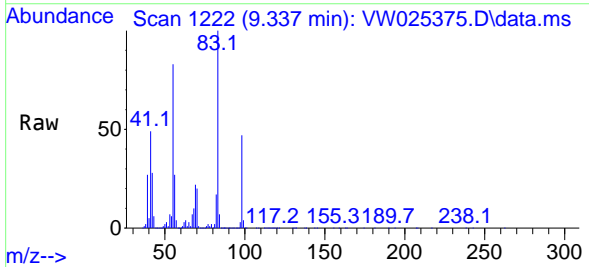
Instrument :
 MSVOA_W
 ClientSampleId :
 VSTD100435



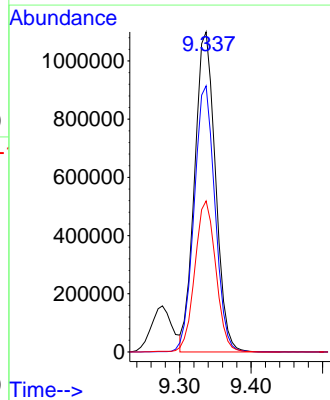
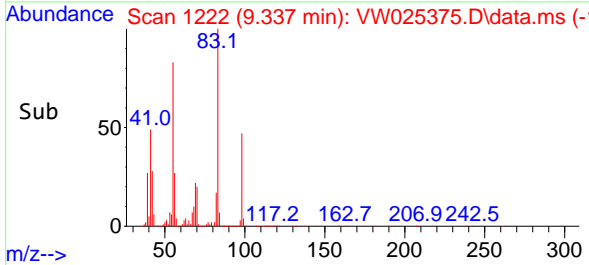
Tgt Ion: 95 Resp: 1198340
 Ion Ratio Lower Upper
 95 100
 97 65.8 43.8 81.4
 132 94.4 65.9 122.3
 130 98.5 68.3 126.8

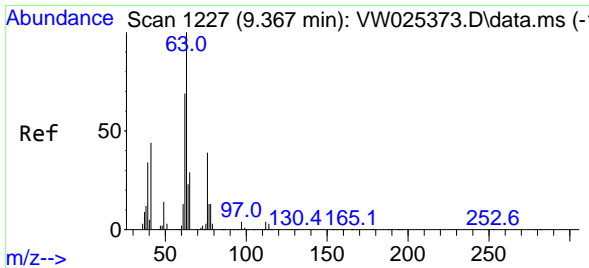


#35
 Methylcyclohexane
 Concen: 106.235 ug/L
 RT: 9.337 min Scan# 1222
 Delta R.T. -0.000 min
 Lab File: VW025375.D
 Acq: 06 Mar 2023 10:26



Tgt Ion: 83 Resp: 2225278
 Ion Ratio Lower Upper
 83 100
 55 83.4 68.2 102.4
 98 47.6 39.0 58.4

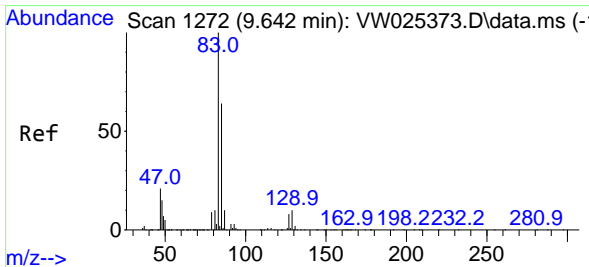
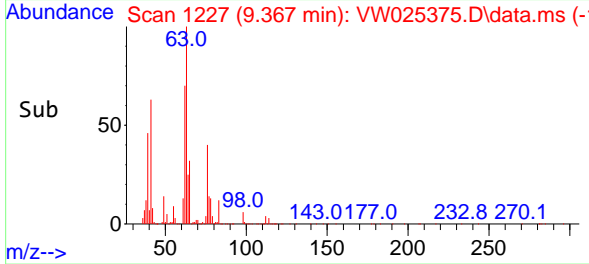
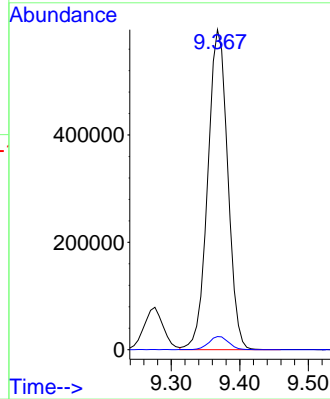
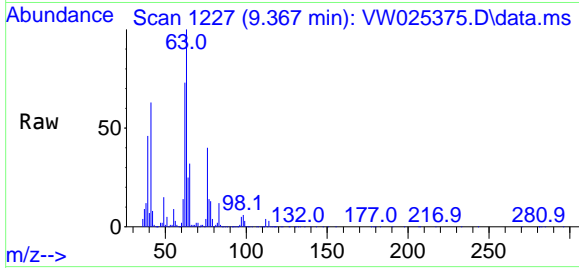




#37
 1,2-Dichloropropane
 Concen: 95.447 ug/L
 RT: 9.367 min Scan# 11
 Delta R.T. 0.000 min
 Lab File: VW025375.D
 Acq: 06 Mar 2023 10:26

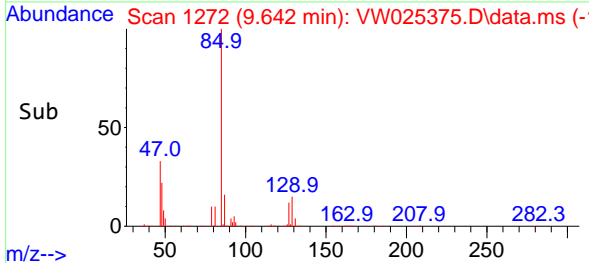
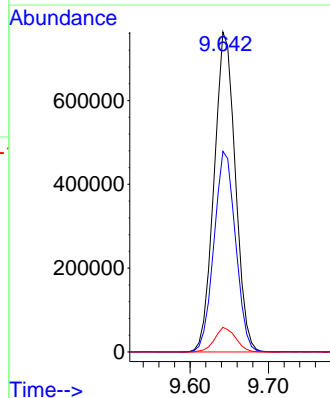
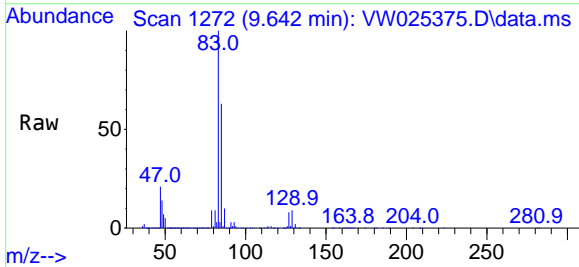
Instrument :
 MSVOA_W
 ClientSampleId :
 VSTD100435

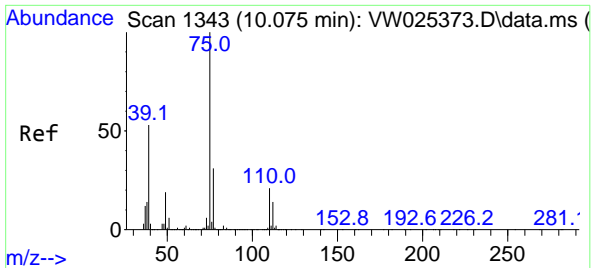
Tgt Ion: 63 Resp: 1206241
 Ion Ratio Lower Upper
 63 100
 112 4.1 3.2 4.8



#38
 Bromodichloromethane
 Concen: 97.629 ug/L
 RT: 9.642 min Scan# 1272
 Delta R.T. -0.000 min
 Lab File: VW025375.D
 Acq: 06 Mar 2023 10:26

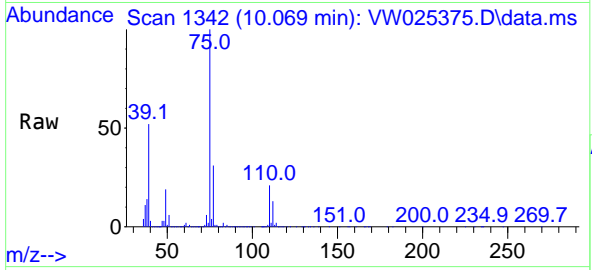
Tgt Ion: 83 Resp: 1438921
 Ion Ratio Lower Upper
 83 100
 85 62.7 44.7 83.1
 127 7.7 6.1 9.1



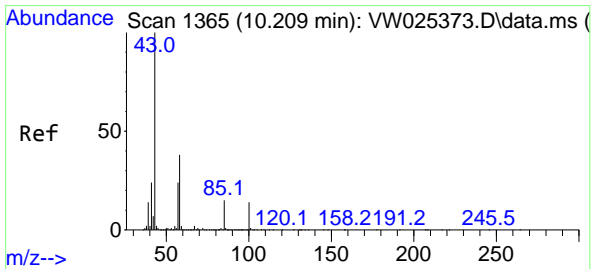
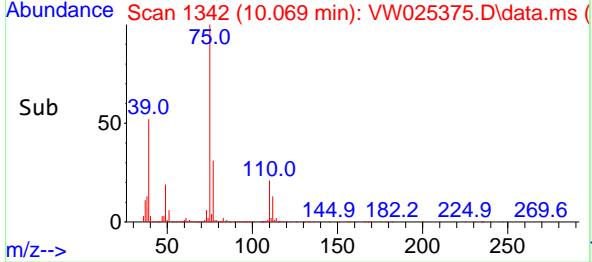
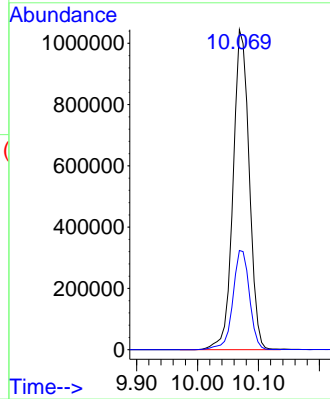


#39
 cis-1,3-Dichloropropene
 Concen: 105.622 ug/L
 RT: 10.069 min Scan# 11
 Delta R.T. -0.006 min
 Lab File: VW025375.D
 Acq: 06 Mar 2023 10:26

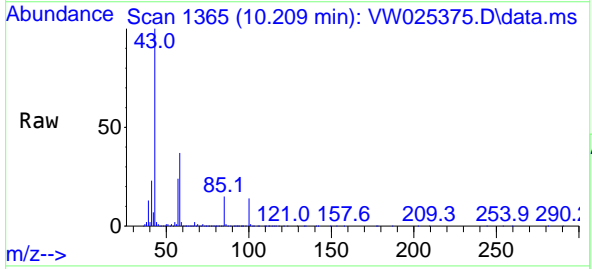
Instrument :
 MSVOA_W
 ClientSampleId :
 VSTD100435



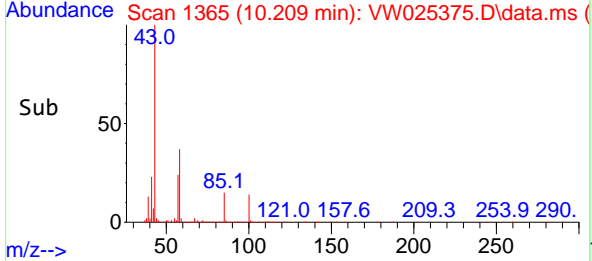
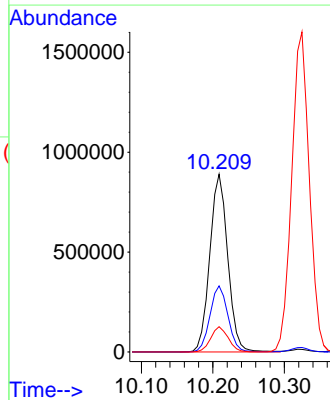
Tgt Ion: 75 Resp: 1922986
 Ion Ratio Lower Upper
 75 100
 77 31.0 22.0 41.0

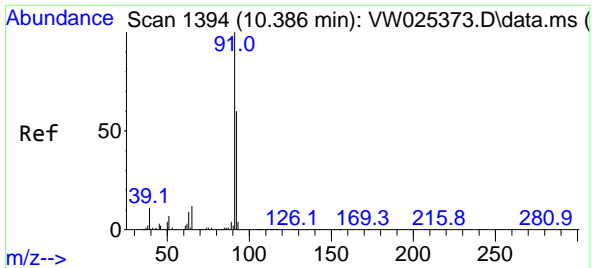


#40
 4-Methyl-2-pentanone
 Concen: 203.993 ug/L
 RT: 10.209 min Scan# 1365
 Delta R.T. -0.000 min
 Lab File: VW025375.D
 Acq: 06 Mar 2023 10:26



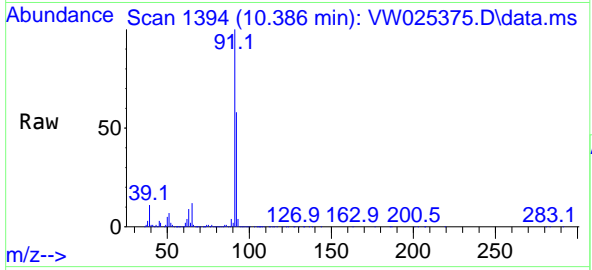
Tgt Ion: 43 Resp: 1549466
 Ion Ratio Lower Upper
 43 100
 58 37.3 29.6 44.4
 100 13.8 10.6 16.0



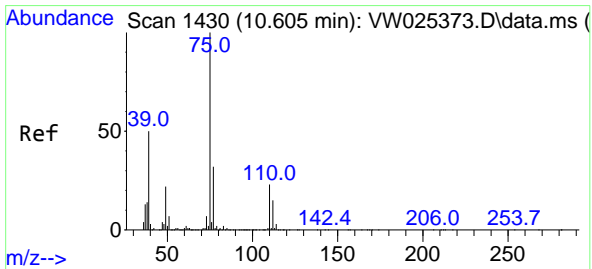
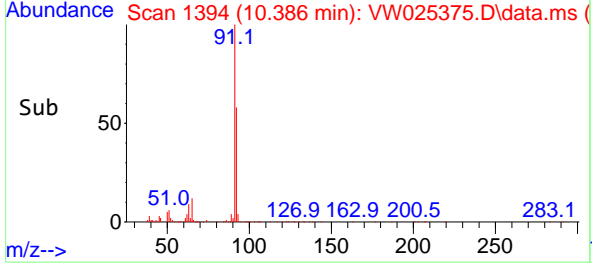
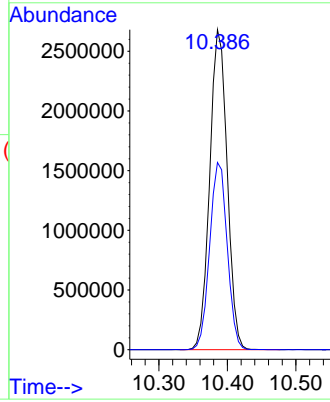


#42
 Toluene
 Concen: 100.088 ug/L
 RT: 10.386 min Scan# 11
 Delta R.T. -0.000 min
 Lab File: VW025375.D
 Acq: 06 Mar 2023 10:26

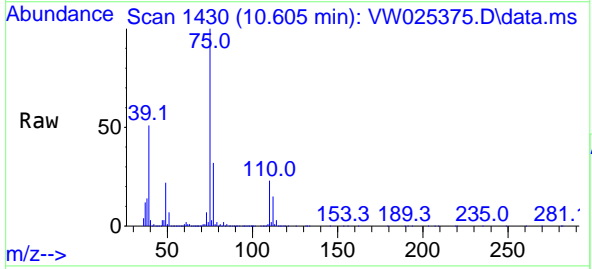
Instrument : MSVOA_W
 ClientSampleId : VSTD100435



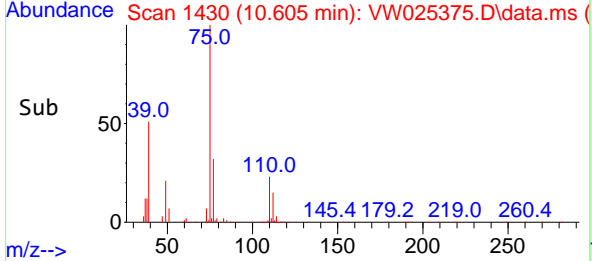
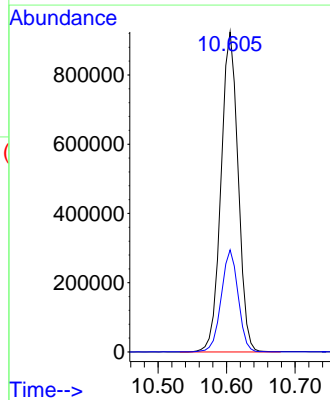
Tgt Ion: 91 Resp: 4744534
 Ion Ratio Lower Upper
 91 100
 92 58.5 41.6 77.3

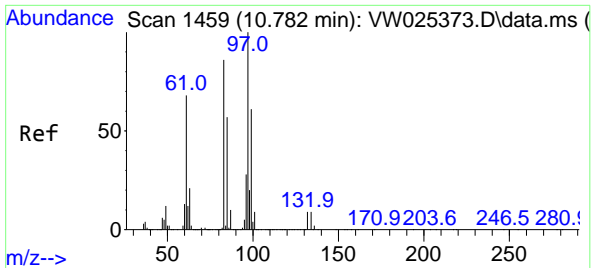


#44
 trans-1,3-Dichloropropene
 Concen: 104.556 ug/L
 RT: 10.605 min Scan# 1430
 Delta R.T. 0.000 min
 Lab File: VW025375.D
 Acq: 06 Mar 2023 10:26



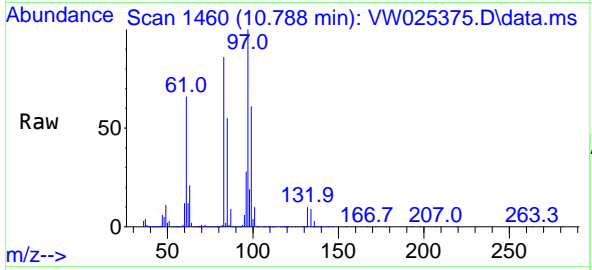
Tgt Ion: 75 Resp: 1594136
 Ion Ratio Lower Upper
 75 100
 77 31.9 22.3 41.3



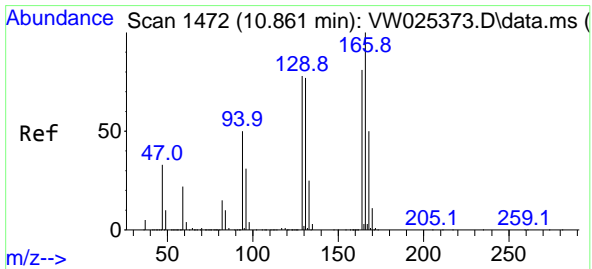
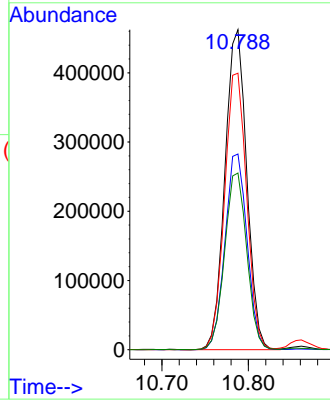
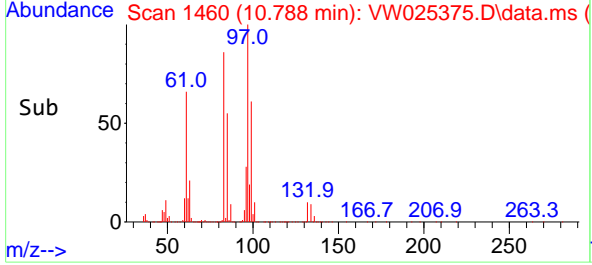


#45
 1,1,2-Trichloroethane
 Concen: 95.448 ug/L
 RT: 10.788 min Scan# 1459
 Delta R.T. 0.006 min
 Lab File: VW025375.D
 Acq: 06 Mar 2023 10:26

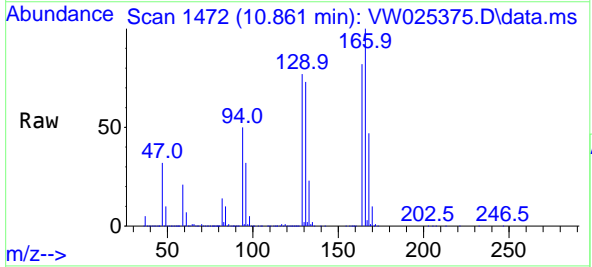
Instrument : MSVOA_W
 ClientSampleId : VSTD100435



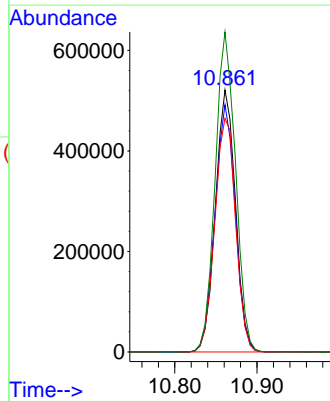
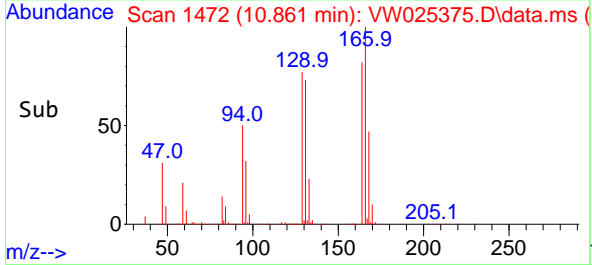
Tgt Ion: 97 Resp: 810072
 Ion Ratio Lower Upper
 97 100
 99 61.2 42.6 79.0
 83 86.4 60.5 112.3
 85 55.2 39.7 73.7

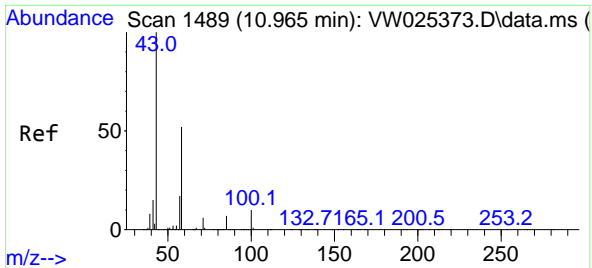


#46
 Tetrachloroethene
 Concen: 103.178 ug/L
 RT: 10.861 min Scan# 1472
 Delta R.T. 0.000 min
 Lab File: VW025375.D
 Acq: 06 Mar 2023 10:26



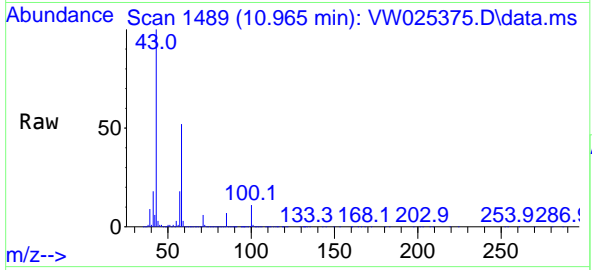
Tgt Ion: 164 Resp: 884656
 Ion Ratio Lower Upper
 164 100
 129 94.4 67.7 125.7
 131 89.2 67.0 124.4
 166 122.2 86.5 160.7





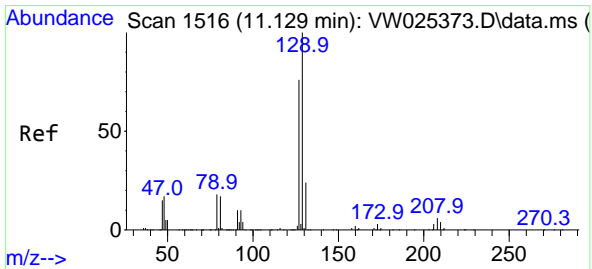
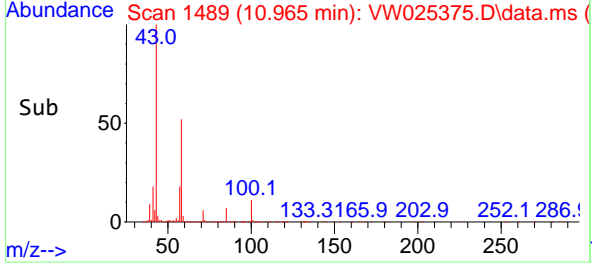
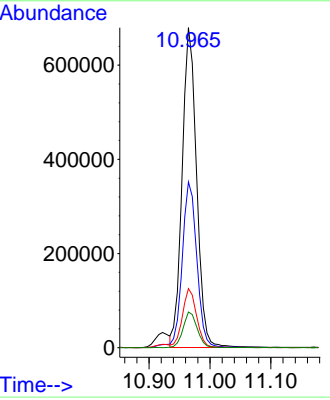
#48
 2-Hexanone
 Concen: 204.868 ug/L
 RT: 10.965 min Scan# 1489
 Delta R.T. -0.000 min
 Lab File: VW025375.D
 Acq: 06 Mar 2023 10:26

Instrument : MSVOA_W
 ClientSampleId : VSTD100435

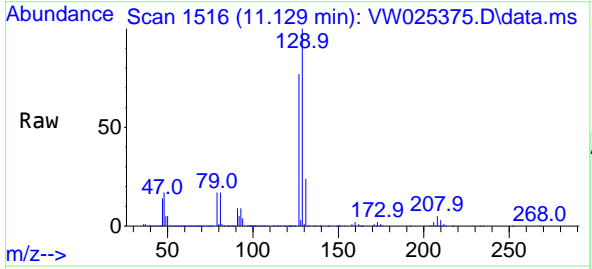


Tgt Ion: 43 Resp: 1119557

Ion	Ratio	Lower	Upper
43	100		
58	51.8	41.2	61.8
57	18.1	14.2	21.4
100	10.9	8.5	12.7

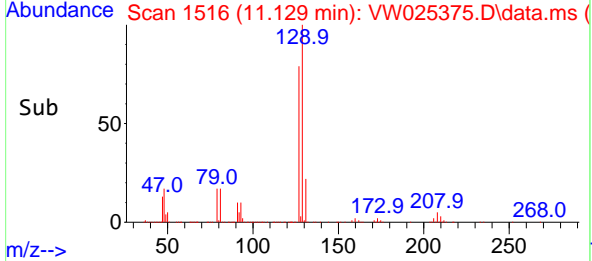
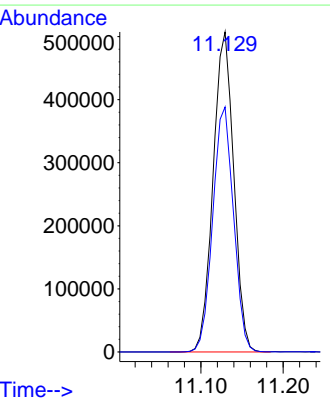


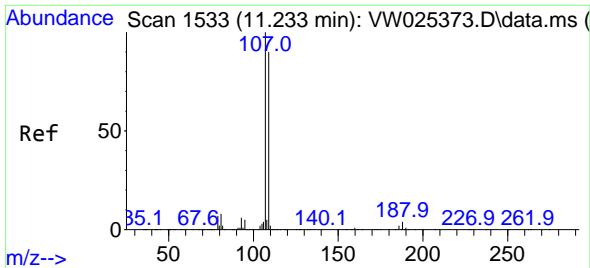
#49
 Dibromochloromethane
 Concen: 97.437 ug/L
 RT: 11.129 min Scan# 1516
 Delta R.T. 0.000 min
 Lab File: VW025375.D
 Acq: 06 Mar 2023 10:26



Tgt Ion: 129 Resp: 883579

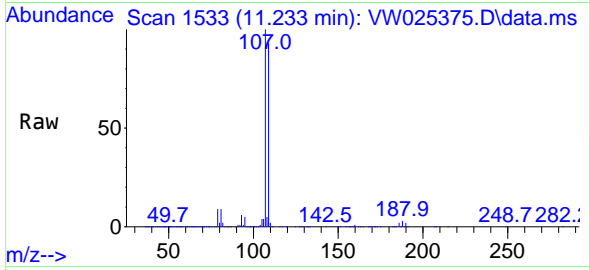
Ion	Ratio	Lower	Upper
129	100		
127	76.5	52.8	98.2



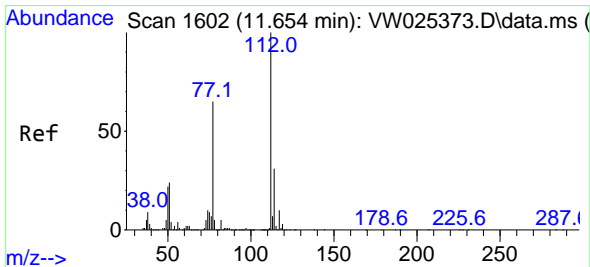
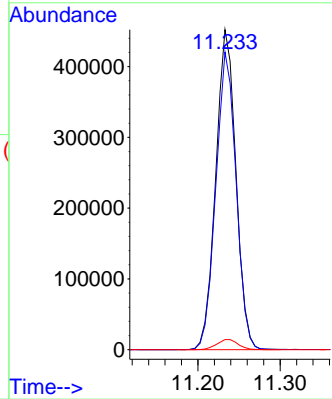
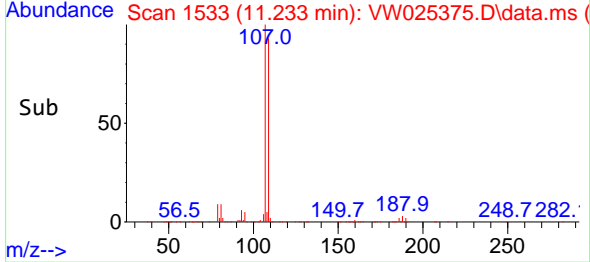


#50
 1,2-Dibromoethane
 Concen: 97.969 ug/L
 RT: 11.233 min Scan# 11
 Delta R.T. -0.000 min
 Lab File: VW025375.D
 Acq: 06 Mar 2023 10:26

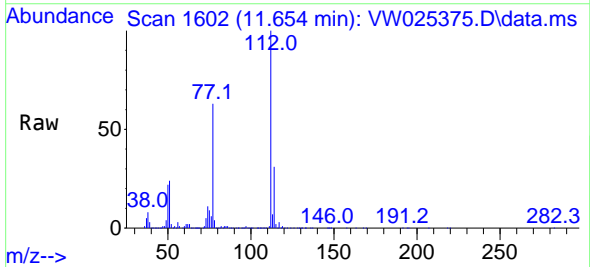
Instrument :
 MSVOA_W
 ClientSampleId :
 VSTD100435



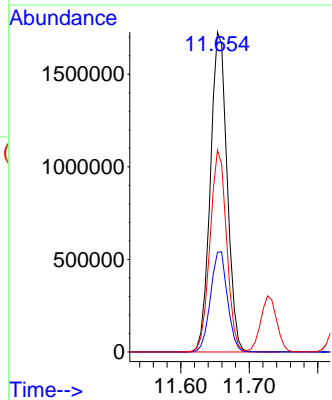
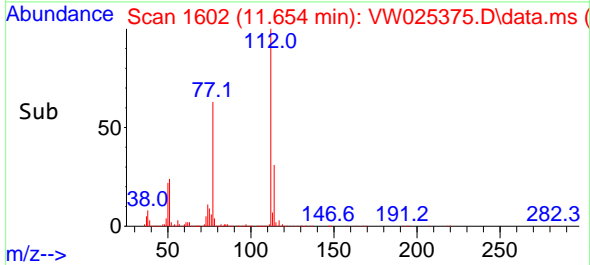
Tgt Ion:107 Resp: 769644
 Ion Ratio Lower Upper
 107 100
 109 93.0 62.9 116.9
 188 3.2 3.0 4.4

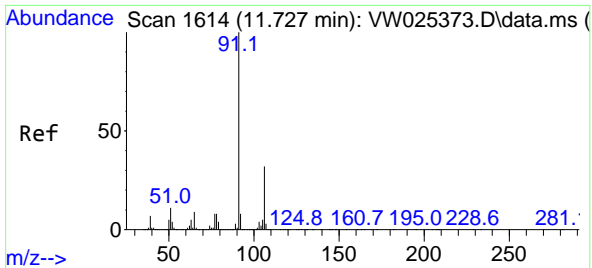


#51
 Chlorobenzene
 Concen: 97.463 ug/L
 RT: 11.654 min Scan# 1602
 Delta R.T. -0.000 min
 Lab File: VW025375.D
 Acq: 06 Mar 2023 10:26



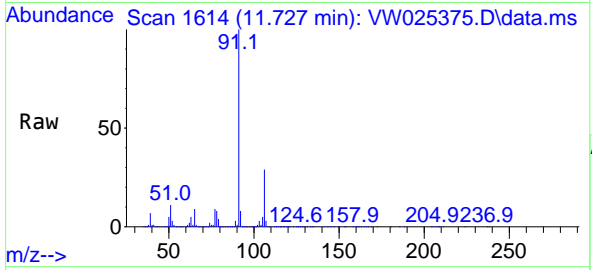
Tgt Ion:112 Resp: 2932208
 Ion Ratio Lower Upper
 112 100
 114 31.2 21.9 40.7
 77 63.1 51.8 77.8



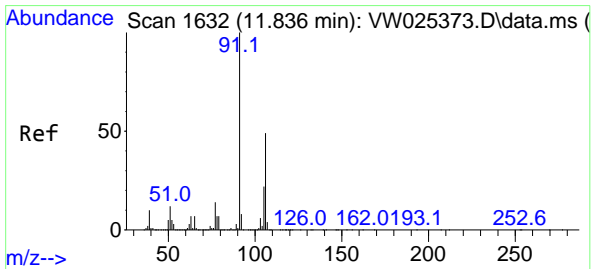
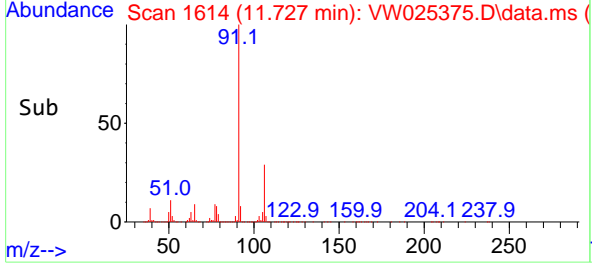
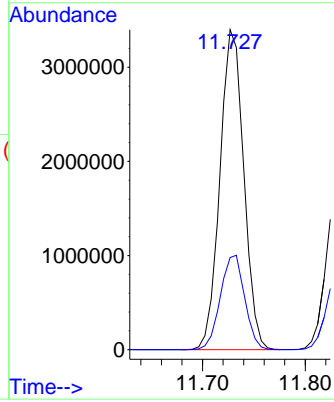


#52
 Ethylbenzene
 Concen: 101.241 ug/L
 RT: 11.727 min Scan# 1614
 Delta R.T. -0.000 min
 Lab File: VW025375.D
 Acq: 06 Mar 2023 10:26

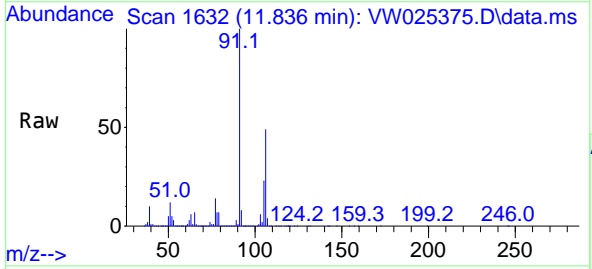
Instrument : MSVOA_W
 ClientSampleId : VSTD100435



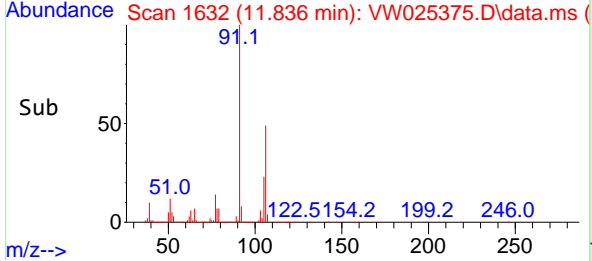
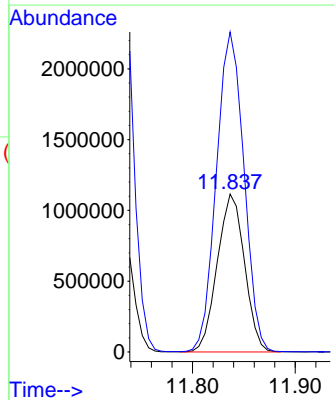
Tgt Ion: 91 Resp: 5473513
 Ion Ratio Lower Upper
 91 100
 106 28.8 22.0 41.0

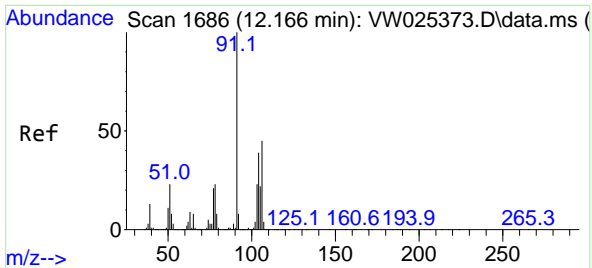


#53
 m,p-Xylene
 Concen: 102.985 ug/L
 RT: 11.836 min Scan# 1632
 Delta R.T. 0.000 min
 Lab File: VW025375.D
 Acq: 06 Mar 2023 10:26



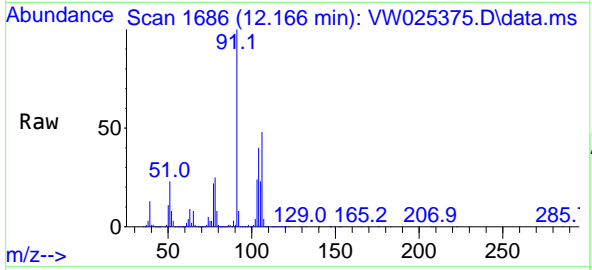
Tgt Ion: 106 Resp: 2053578
 Ion Ratio Lower Upper
 106 100
 91 202.6 144.2 267.8



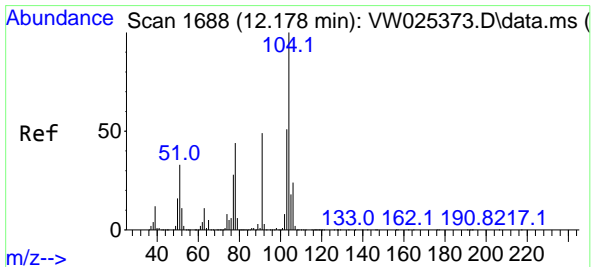
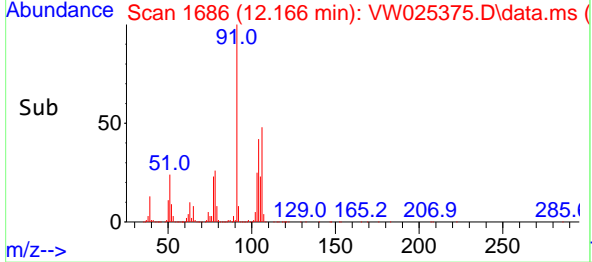
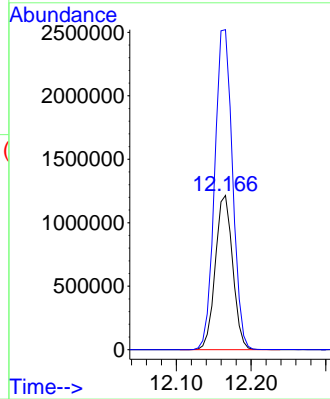


#54
 o-Xylene
 Concen: 104.322 ug/L
 RT: 12.166 min Scan# 1686
 Delta R.T. -0.000 min
 Lab File: VW025375.D
 Acq: 06 Mar 2023 10:26

Instrument : MSVOA_W
 ClientSampleId : VSTD100435

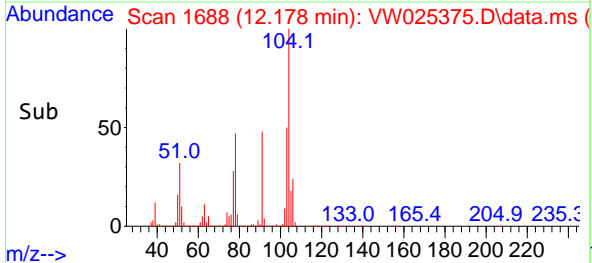
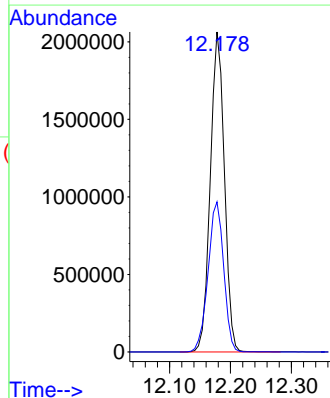
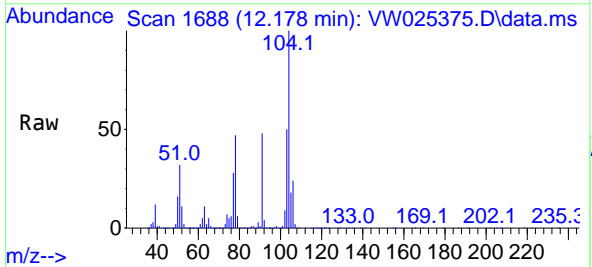


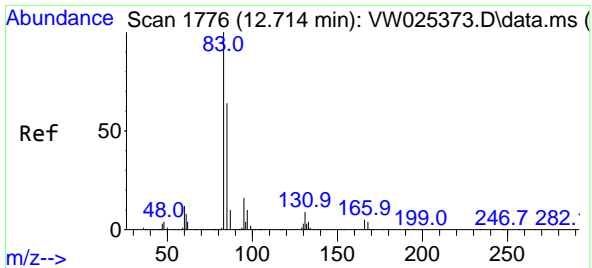
Tgt Ion:106 Resp: 1957495
 Ion Ratio Lower Upper
 106 100
 91 207.5 154.6 287.2



#55
 Styrene
 Concen: 103.408 ug/L
 RT: 12.178 min Scan# 1688
 Delta R.T. -0.000 min
 Lab File: VW025375.D
 Acq: 06 Mar 2023 10:26

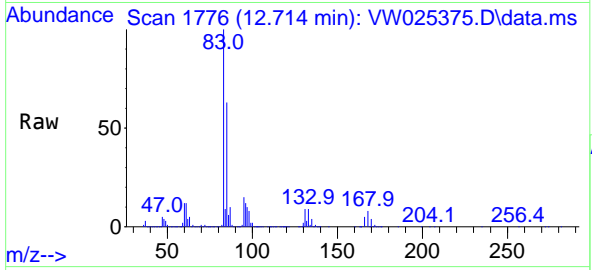
Tgt Ion:104 Resp: 3313514
 Ion Ratio Lower Upper
 104 100
 78 46.9 31.1 57.9



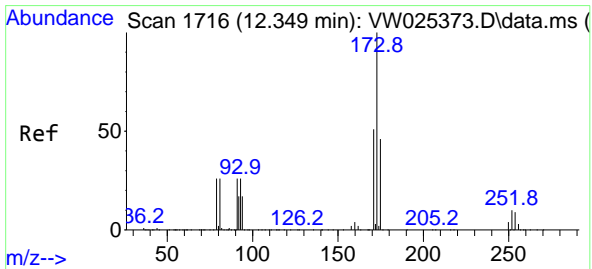
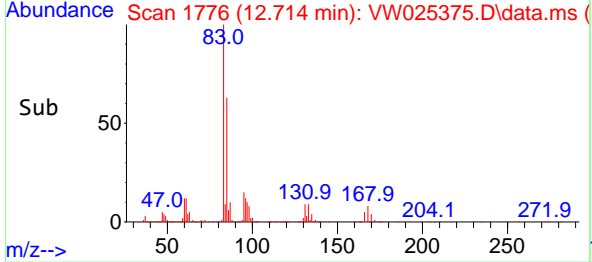
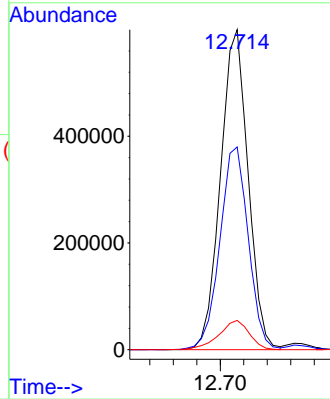


#57
 1,1,2-Tetrachloroethane
 Concen: 92.599 ug/L
 RT: 12.714 min Scan# 1776
 Delta R.T. 0.000 min
 Lab File: VW025375.D
 Acq: 06 Mar 2023 10:26

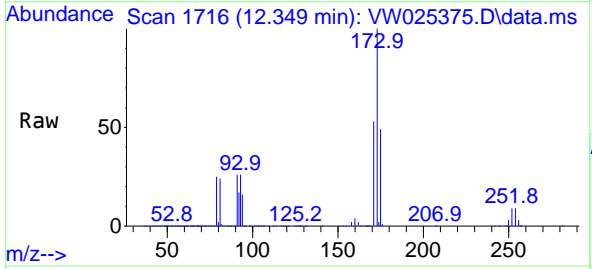
Instrument : MSVOA_W
 ClientSampleId : VSTD100435



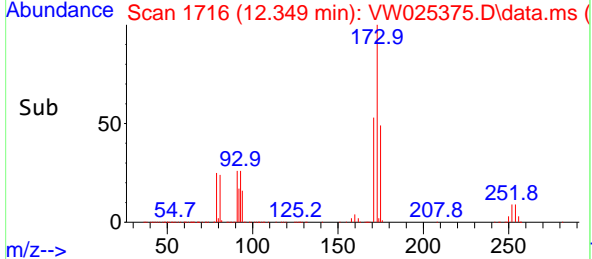
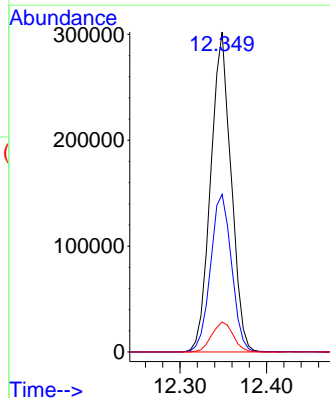
Tgt Ion: 83 Resp: 977581
 Ion Ratio Lower Upper
 83 100
 85 63.3 45.4 84.2
 131 9.1 8.0 12.0

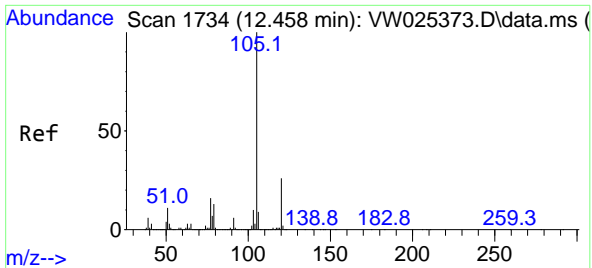


#59
 Bromoform
 Concen: 101.529 ug/L
 RT: 12.349 min Scan# 1716
 Delta R.T. -0.000 min
 Lab File: VW025375.D
 Acq: 06 Mar 2023 10:26



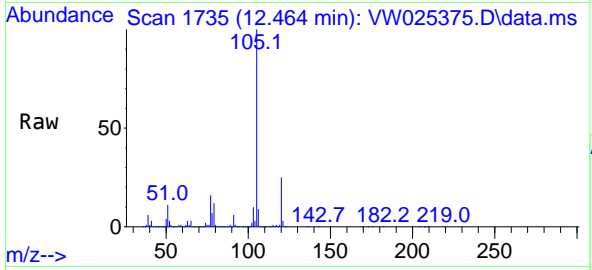
Tgt Ion: 173 Resp: 494337
 Ion Ratio Lower Upper
 173 100
 175 50.8 38.6 57.8
 254 9.8 7.9 11.9





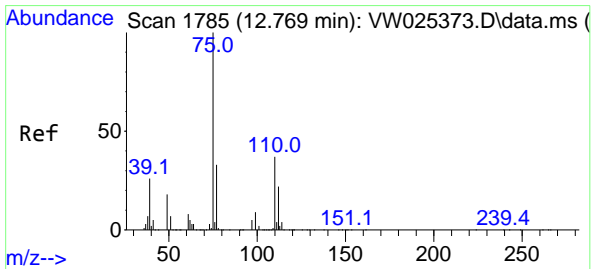
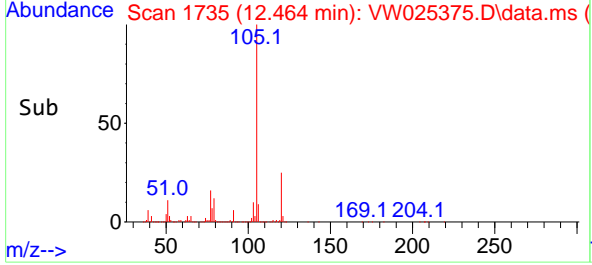
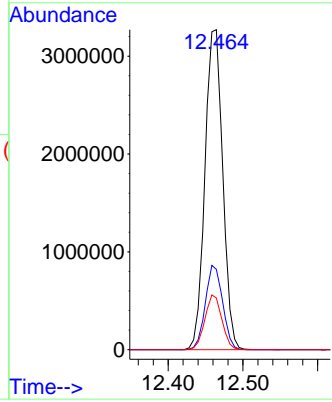
#60
 Isopropylbenzene
 Concen: 107.335 ug/L
 RT: 12.464 min Scan# 1735
 Delta R.T. 0.006 min
 Lab File: VW025375.D
 Acq: 06 Mar 2023 10:26

Instrument : MSVOA_W
 ClientSampleId : VSTD100435

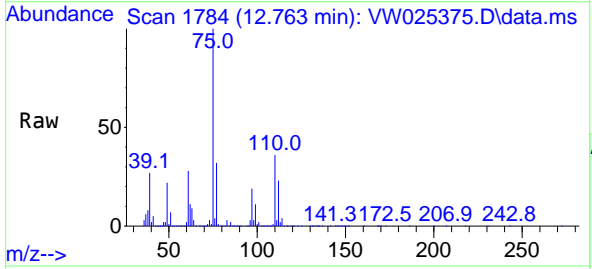


Tgt Ion:105 Resp: 5399776

Ion	Ratio	Lower	Upper
105	100		
120	25.6	20.9	31.3
77	16.3	13.1	19.7

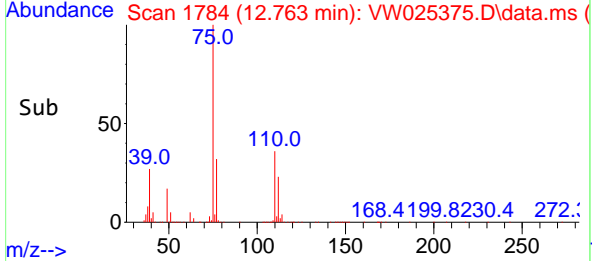
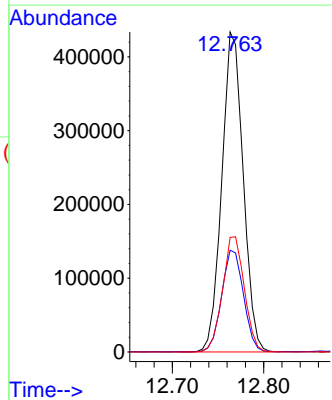


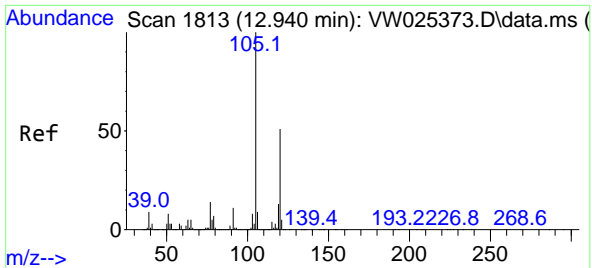
#61
 1,2,3-Trichloropropane
 Concen: 95.982 ug/L
 RT: 12.763 min Scan# 1784
 Delta R.T. -0.006 min
 Lab File: VW025375.D
 Acq: 06 Mar 2023 10:26



Tgt Ion: 75 Resp: 705724

Ion	Ratio	Lower	Upper
75	100		
77	32.6	25.4	38.2
110	36.7	28.9	43.3

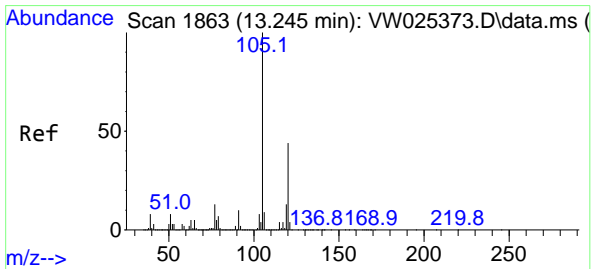
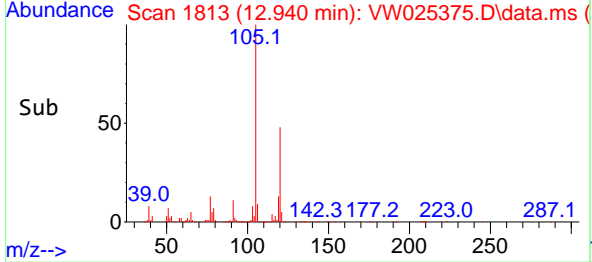
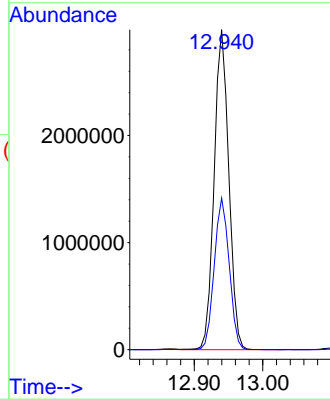
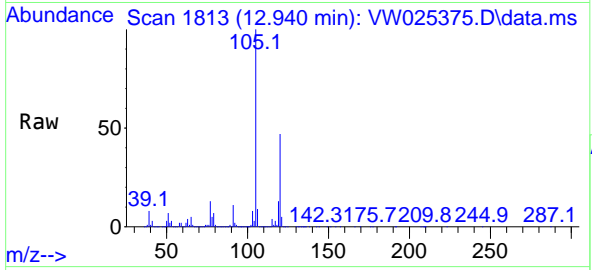




#62
 1,3,5-Trimethylbenzene
 Concen: 111.045 ug/L
 RT: 12.940 min Scan# 1813
 Delta R.T. -0.000 min
 Lab File: VW025375.D
 Acq: 06 Mar 2023 10:26

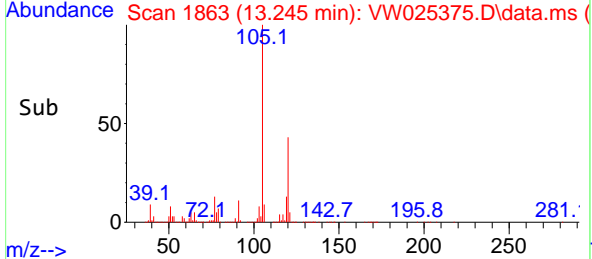
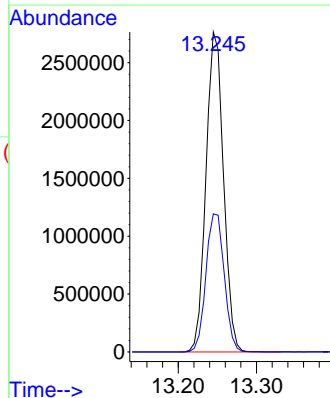
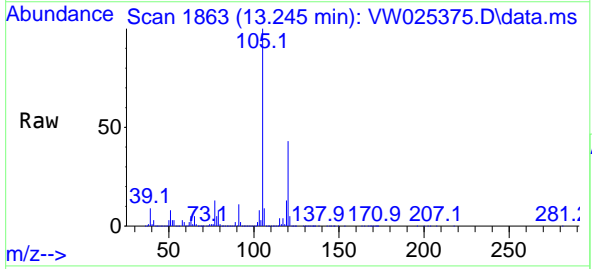
Instrument :
 MSVOA_W
 ClientSampleId :
 VSTD100435

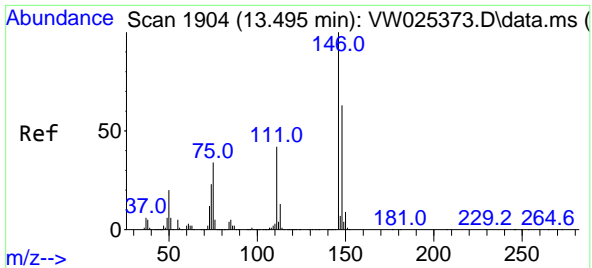
Tgt Ion:105 Resp: 4424362
 Ion Ratio Lower Upper
 105 100
 120 48.3 39.3 58.9



#63
 1,2,4-Trimethylbenzene
 Concen: 109.042 ug/L
 RT: 13.245 min Scan# 1863
 Delta R.T. -0.000 min
 Lab File: VW025375.D
 Acq: 06 Mar 2023 10:26

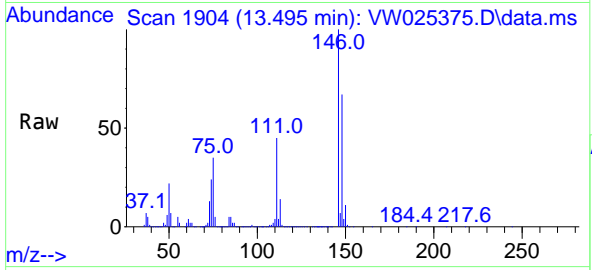
Tgt Ion:105 Resp: 4280031
 Ion Ratio Lower Upper
 105 100
 120 45.2 36.0 54.0





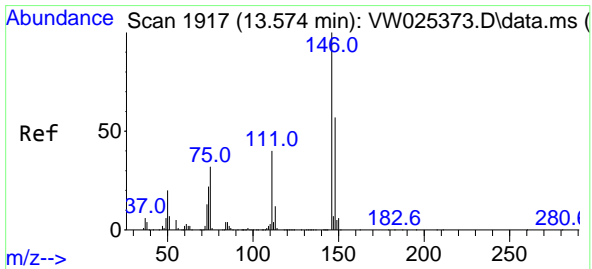
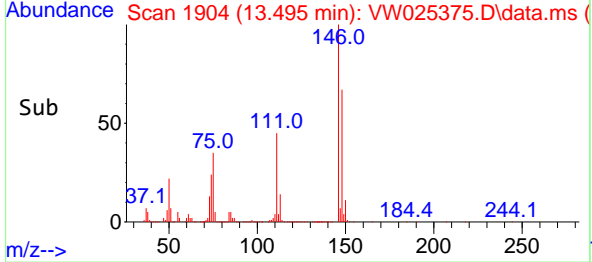
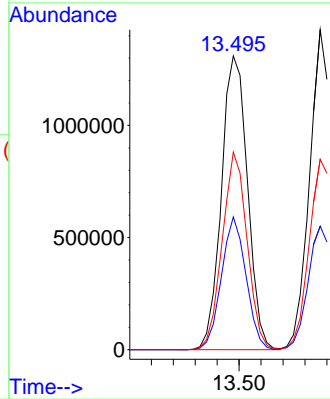
#64
 1,3-Dichlorobenzene
 Concen: 101.547 ug/L
 RT: 13.495 min Scan# 1904
 Delta R.T. -0.000 min
 Lab File: VW025375.D
 Acq: 06 Mar 2023 10:26

Instrument : MSVOA_W
 ClientSampleId : VSTD100435

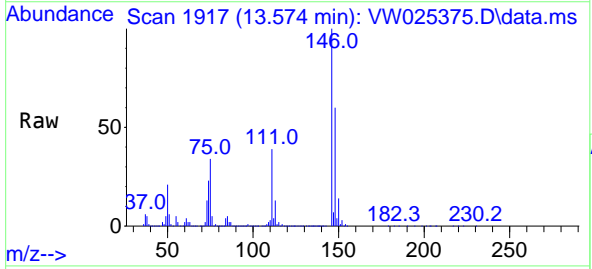


Tgt Ion:146 Resp: 2164698

Ion	Ratio	Lower	Upper
146	100		
111	45.2	29.7	55.1
148	67.3	44.2	82.2

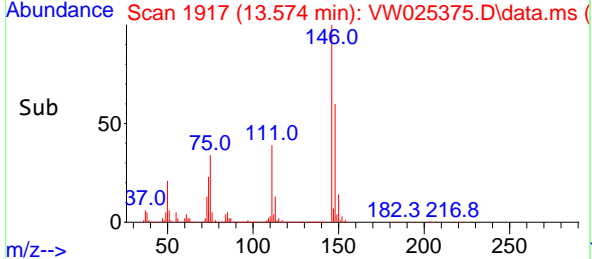
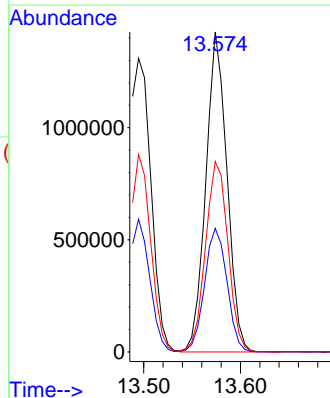


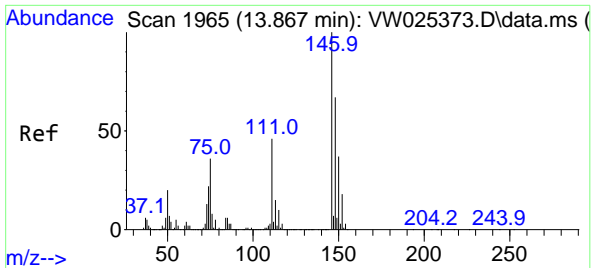
#65
 1,4-Dichlorobenzene
 Concen: 99.357 ug/L
 RT: 13.574 min Scan# 1917
 Delta R.T. -0.000 min
 Lab File: VW025375.D
 Acq: 06 Mar 2023 10:26



Tgt Ion:146 Resp: 2172561

Ion	Ratio	Lower	Upper
146	100		
111	38.6	28.2	52.4
148	59.5	39.8	73.8



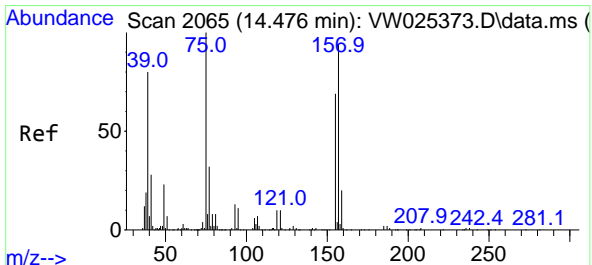
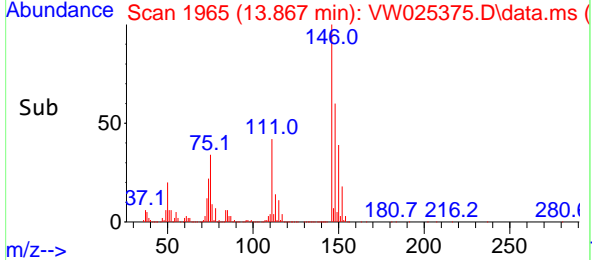
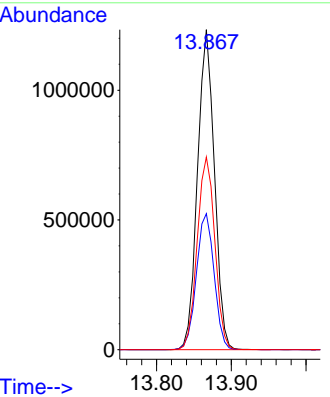
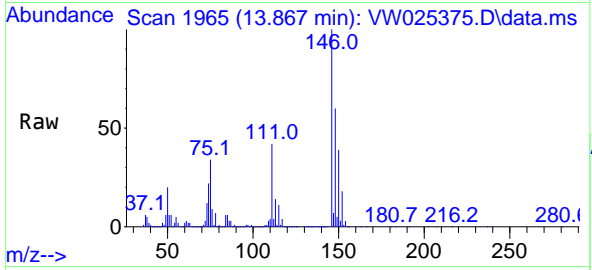


#67
 1,2-Dichlorobenzene
 Concen: 101.251 ug/L
 RT: 13.867 min Scan# 1965
 Delta R.T. -0.000 min
 Lab File: VW025375.D
 Acq: 06 Mar 2023 10:26

Instrument : MSVOA_W
 ClientSampleId : VSTD100435

Tgt Ion:146 Resp: 1935831

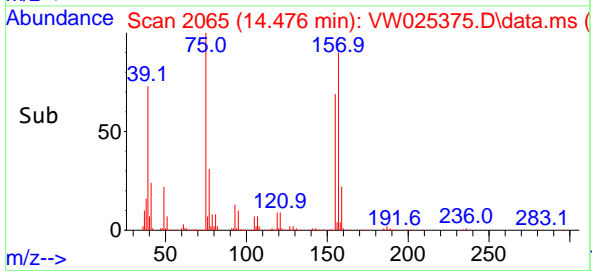
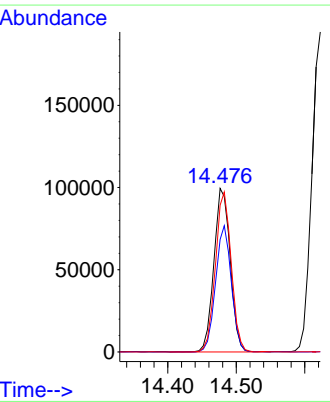
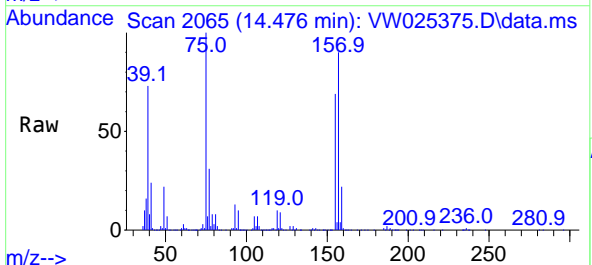
Ion	Ratio	Lower	Upper
146	100		
111	42.5	36.6	54.8
148	60.2	53.4	80.2

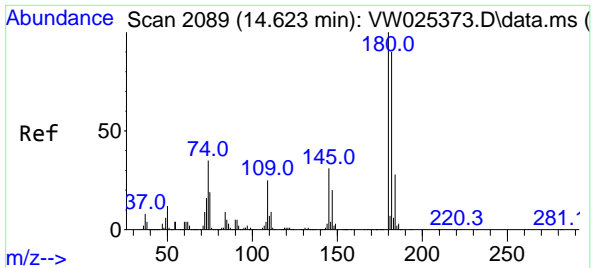


#68
 1,2-Dibromo-3-chloropropane
 Concen: 96.476 ug/L
 RT: 14.476 min Scan# 2065
 Delta R.T. 0.000 min
 Lab File: VW025375.D
 Acq: 06 Mar 2023 10:26

Tgt Ion: 75 Resp: 164219

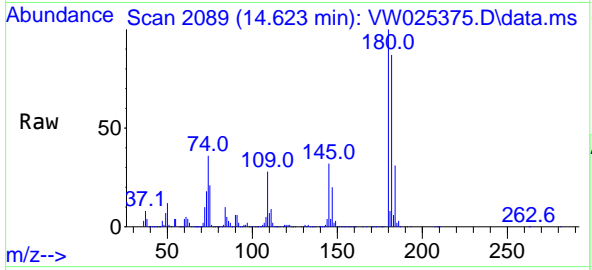
Ion	Ratio	Lower	Upper
75	100		
155	68.8	55.4	83.0
157	89.7	75.3	112.9





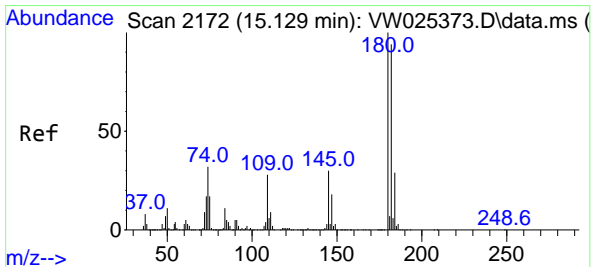
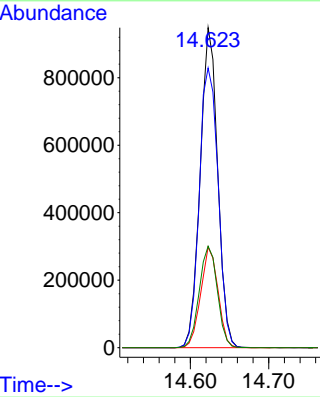
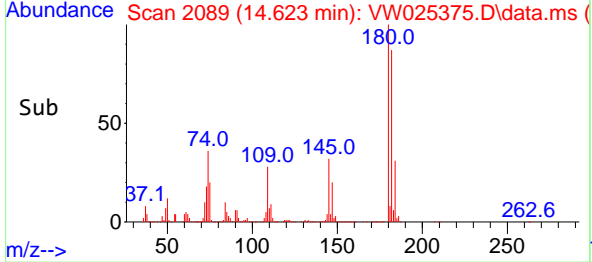
#69
 1,3,5-Trichlorobenzene
 Concen: 101.563 ug/L
 RT: 14.623 min Scan# 2089
 Delta R.T. -0.000 min
 Lab File: VW025375.D
 Acq: 06 Mar 2023 10:26

Instrument : MSVOA_W
 ClientSampleId : VSTD100435

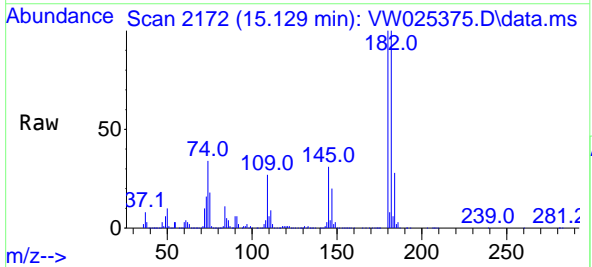


Tgt Ion:180 Resp: 1471734

Ion	Ratio	Lower	Upper
180	100		
182	94.2	77.1	115.7
184	31.0	24.7	37.1
145	32.7	25.7	38.5

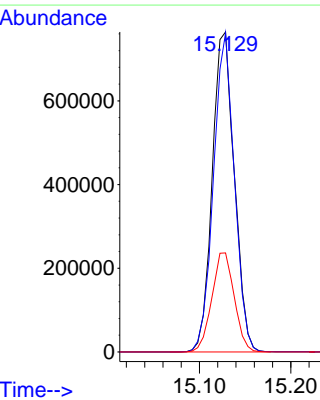
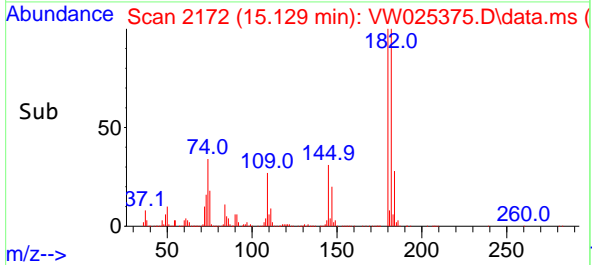


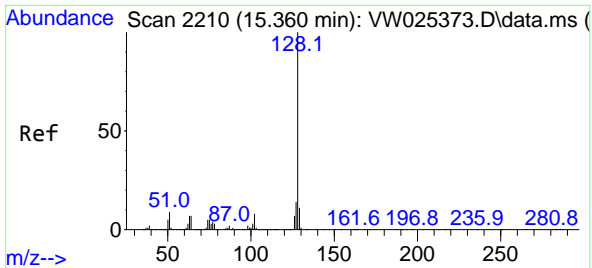
#70
 1,2,4-trichlorobenzene
 Concen: 106.757 ug/L
 RT: 15.129 min Scan# 2172
 Delta R.T. -0.000 min
 Lab File: VW025375.D
 Acq: 06 Mar 2023 10:26



Tgt Ion:180 Resp: 1282663

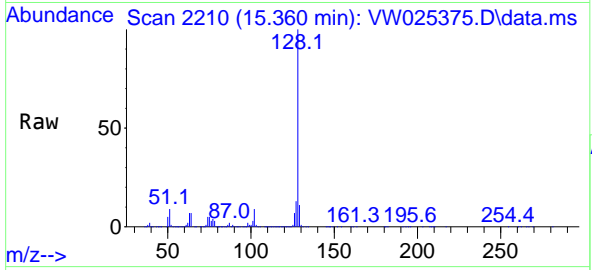
Ion	Ratio	Lower	Upper
180	100		
182	94.6	75.5	113.3
145	31.5	25.2	37.8





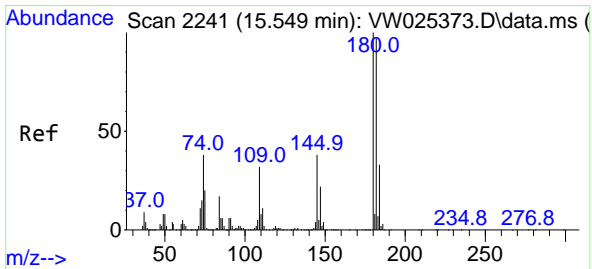
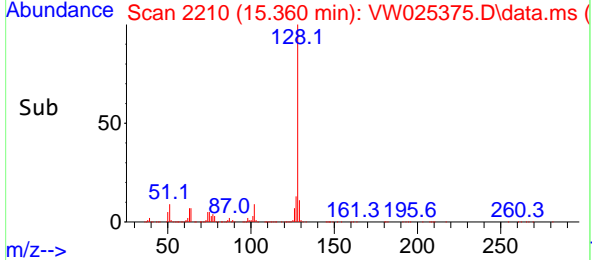
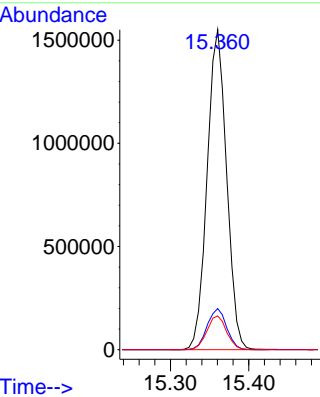
#71
 Naphthalene
 Concen: 112.874 ug/L
 RT: 15.360 min Scan# 211
 Delta R.T. 0.000 min
 Lab File: VW025375.D
 Acq: 06 Mar 2023 10:26

Instrument : MSVOA_W
 ClientSampleId : VSTD100435

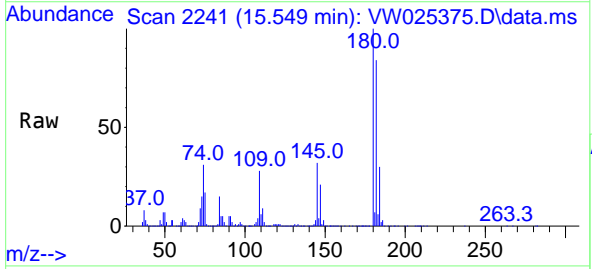


Tgt Ion:128 Resp: 2676943

Ion	Ratio	Lower	Upper
128	100		
127	12.9	10.6	16.0
129	10.7	8.6	13.0



#72
 1,2,3-Trichlorobenzene
 Concen: 105.267 ug/L
 RT: 15.549 min Scan# 2241
 Delta R.T. 0.000 min
 Lab File: VW025375.D
 Acq: 06 Mar 2023 10:26



Tgt Ion:180 Resp: 1135988

Ion	Ratio	Lower	Upper
180	100		
182	92.4	76.6	114.8
145	33.2	27.7	41.5

