

Data Path : Z:\voasrv\HPCHEM1\MSVOA_W\Data\VW030822\
 Data File : VW022228.D
 Acq On : 08 Mar 2022 15:13
 Operator : SY/VA
 Sample : N1816-18
 Misc : 6.56g/10mL/MSVOA_W/SOIL
 ALS Vial : 1 Sample Multiplier: 1

Instrument :
 MSVOA_W
 ClientSampleId :

Quant Time: Mar 09 00:26:40 2022
 Quant Method : Z:\voasrv\HPCHEM1\MSVOA_W\Method\SFAMWLM022322SMA.M
 Quant Title : SFAM01.0
 QLast Update : Wed Mar 09 00:23:14 2022
 Response via : Initial Calibration

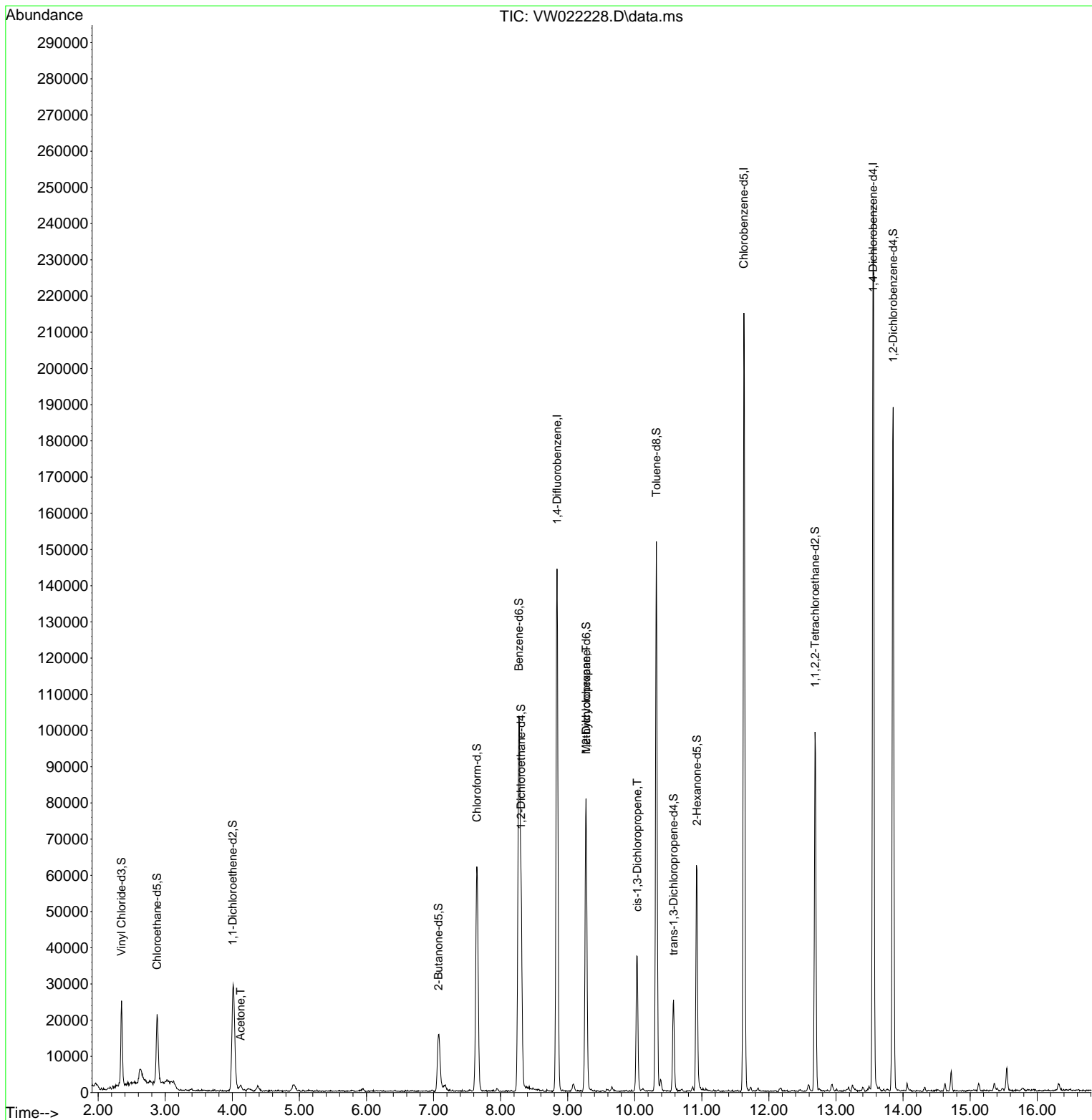
Compound	R.T.	QIon	Response	Conc	Units	Dev(Min)
Internal Standards						
1) 1,4-Difluorobenzene	8.841	114	126845	25.000	ug/L	0.00
28) Chlorobenzene-d5	11.628	117	124953	25.000	ug/L	0.00
58) 1,4-Dichlorobenzene-d4	13.554	152	65291	25.000	ug/L	0.00
System Monitoring Compounds						
4) Vinyl Chloride-d3	2.349	65	20624	12.466	ug/L	0.00
Spiked Amount	25.000	Range 30 - 150	Recovery	=	49.880%	
7) Chloroethane-d5	2.879	69	20710	15.909	ug/L	0.00
Spiked Amount	25.000	Range 30 - 150	Recovery	=	63.640%	
11) 1,1-Dichloroethene-d2	4.007	63	27874	11.002	ug/L	-0.01
Spiked Amount	25.000	Range 45 - 110	Recovery	=	44.000%#	
21) 2-Butanone-d5	7.073	46	25801	92.752	ug/L	0.00
Spiked Amount	50.000	Range 20 - 135	Recovery	=	185.500%#	
24) Chloroform-d	7.647	84	64682	22.855	ug/L	0.00
Spiked Amount	25.000	Range 40 - 150	Recovery	=	91.440%	
26) 1,2-Dichloroethane-d4	8.305	65	37221	25.301	ug/L	0.00
Spiked Amount	25.000	Range 70 - 130	Recovery	=	101.200%	
32) Benzene-d6	8.274	84	107754	18.529	ug/L	0.00
Spiked Amount	25.000	Range 20 - 135	Recovery	=	74.120%	
36) 1,2-Dichloropropane-d6	9.274	67	34941	21.636	ug/L	0.00
Spiked Amount	25.000	Range 70 - 120	Recovery	=	86.560%	
41) Toluene-d8	10.323	98	97706	16.900	ug/L	0.00
Spiked Amount	25.000	Range 30 - 130	Recovery	=	67.600%	
43) trans-1,3-Dichloroprop...	10.579	79	13983	19.528	ug/L	0.00
Spiked Amount	25.000	Range 30 - 135	Recovery	=	78.120%	
47) 2-Hexanone-d5	10.926	63	20522	77.262	ug/L	0.00
Spiked Amount	50.000	Range 20 - 135	Recovery	=	154.520%#	
56) 1,1,2,2-Tetrachloroeth...	12.688	84	45043	31.780	ug/L	0.00
Spiked Amount	25.000	Range 45 - 120	Recovery	=	127.120%#	
66) 1,2-Dichlorobenzene-d4	13.853	152	48645	23.196	ug/L	0.00
Spiked Amount	25.000	Range 75 - 120	Recovery	=	92.800%	
Target Compounds						
13) Acetone	4.123	43	2702	11.893	ug/L	100
35) Methylcyclohexane	9.274	83	9626	3.598	ug/L #	21
39) cis-1,3-Dichloropropene	10.036	75	1234	0.576	ug/L #	43

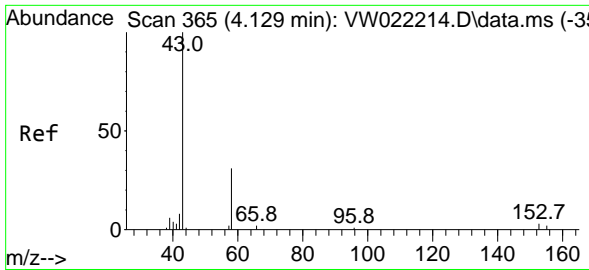
(#) = qualifier out of range (m) = manual integration (+) = signals summed

Data Path : Z:\voasrv\HPCHEM1\MSVOA_W\Data\VW030822\
 Data File : VW022228.D
 Acq On : 08 Mar 2022 15:13
 Operator : SY/VA
 Sample : N1816-18
 Misc : 6.56g/10mL/MSVOA_W/SOIL
 ALS Vial : 1 Sample Multiplier: 1

Instrument :
 MSVOA_W
 ClientSampleId :

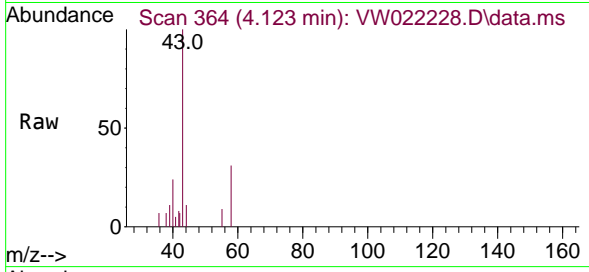
Quant Time: Mar 09 00:26:40 2022
 Quant Method : Z:\voasrv\HPCHEM1\MSVOA_W\Method\SFAMWLM022322SMA.M
 Quant Title : SFAM01.0
 QLast Update : Wed Mar 09 00:23:14 2022
 Response via : Initial Calibration



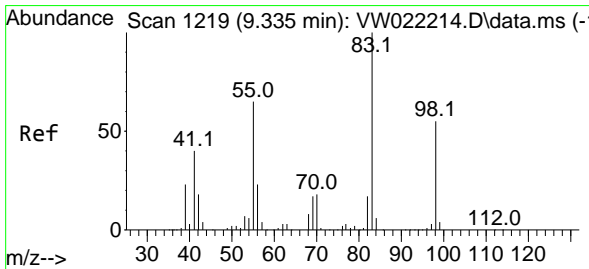
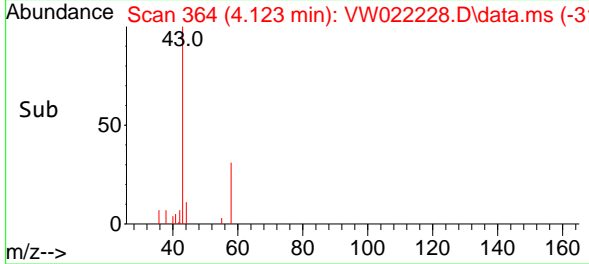
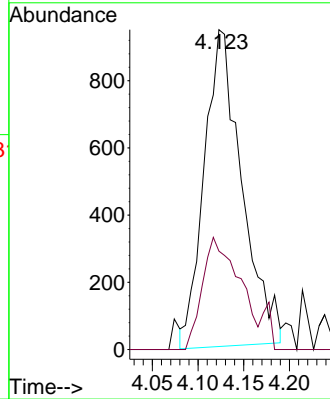


#13
 Acetone
 Concen: 11.893 ug/L
 RT: 4.123 min Scan# 30
 Delta R.T. -0.006 min
 Lab File: VW022228.D
 Acq: 08 Mar 2022 15:13

Instrument :
 MSVOA_W
 ClientSampleId :

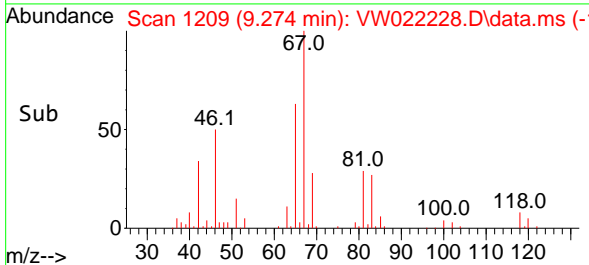
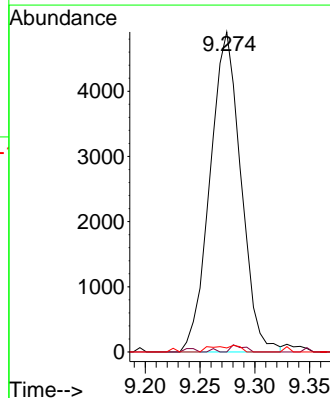
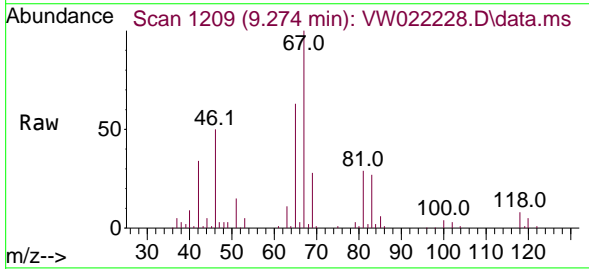


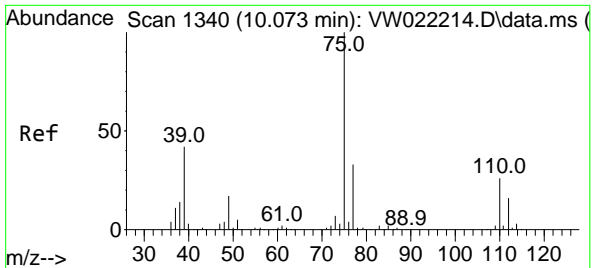
Tgt Ion: 43 Resp: 2702
 Ion Ratio Lower Upper
 43 100
 58 34.8 0.0 69.2



#35
 Methylcyclohexane
 Concen: 3.598 ug/L
 RT: 9.274 min Scan# 1209
 Delta R.T. -0.061 min
 Lab File: VW022228.D
 Acq: 08 Mar 2022 15:13

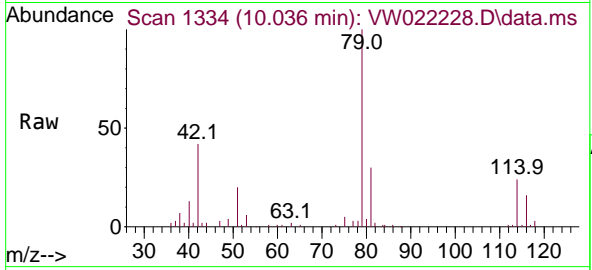
Tgt Ion: 83 Resp: 9626
 Ion Ratio Lower Upper
 83 100
 55 1.0 53.8 80.8#
 98 0.7 42.1 63.1#





#39
 cis-1,3-Dichloropropene
 Concen: 0.576 ug/L
 RT: 10.036 min Scan# 11
 Delta R.T. -0.037 min
 Lab File: VW022228.D
 Acq: 08 Mar 2022 15:13

Instrument :
 MSVOA_W
 ClientSampleId :



Tgt Ion: 75 Resp: 1234
 Ion Ratio Lower Upper
 75 100
 77 60.0 20.6 38.2#

