

Data Path : Z:\voasrv\HPCHEM1\MSVOA_W\Data\VW031623\
 Data File : VW025391.D
 Acq On : 16 Mar 2023 11:05
 Operator : SY/MD
 Sample : VSTDCCC025
 Misc : 5.00g/10mL/MSVOA_W/SOIL
 ALS Vial : 1 Sample Multiplier: 1

Instrument :
 MSVOA_W
 ClientSampleId :
 VSTD025548

Quant Time: Mar 17 01:32:09 2023
 Quant Method : Z:\voasrv\HPCHEM1\MSVOA_W\Method\SFAMWLM030623SMA.M
 Quant Title : SFAM01.0
 QLast Update : Fri Mar 10 23:28:46 2023
 Response via : Initial Calibration

Compound	R.T.	QIon	Response	Conc	Units	Dev(Min)
Internal Standards						
1) 1,4-Difluorobenzene	8.843	114	755678	25.000	ug/L	0.00
28) Chlorobenzene-d5	11.629	117	671150	25.000	ug/L	0.00
58) 1,4-Dichlorobenzene-d4	13.556	152	331113	25.000	ug/L	0.00
System Monitoring Compounds						
4) Vinyl Chloride-d3	2.363	65	292759	23.300	ug/L	0.00
Spiked Amount	25.000	Range 30 - 150	Recovery =	93.200%		
7) Chloroethane-d5	2.899	69	224244	24.804	ug/L	0.00
Spiked Amount	25.000	Range 30 - 150	Recovery =	99.200%		
11) 1,1-Dichloroethene-d2	4.027	63	609128	25.100	ug/L	0.00
Spiked Amount	25.000	Range 45 - 110	Recovery =	100.400%		
21) 2-Butanone-d5	7.081	46	137431	44.561	ug/L	0.00
Spiked Amount	50.000	Range 20 - 135	Recovery =	89.120%		
24) Chloroform-d	7.648	84	570025	26.166	ug/L	0.00
Spiked Amount	25.000	Range 40 - 150	Recovery =	104.680%		
26) 1,2-Dichloroethane-d4	8.307	65	293501	25.101	ug/L	0.00
Spiked Amount	25.000	Range 70 - 130	Recovery =	100.400%		
32) Benzene-d6	8.276	84	1186221	25.867	ug/L	0.00
Spiked Amount	25.000	Range 20 - 135	Recovery =	103.480%		
36) 1,2-Dichloropropane-d6	9.270	67	366829	25.857	ug/L	0.00
Spiked Amount	25.000	Range 70 - 120	Recovery =	103.440%		
41) Toluene-d8	10.319	98	1062917	26.288	ug/L	0.00
Spiked Amount	25.000	Range 30 - 130	Recovery =	105.160%		
43) trans-1,3-Dichloroprop...	10.575	79	140230	24.823	ug/L	0.00
Spiked Amount	25.000	Range 30 - 135	Recovery =	99.280%		
47) 2-Hexanone-d5	10.922	63	88020	43.146	ug/L	0.00
Spiked Amount	50.000	Range 20 - 135	Recovery =	86.300%		
56) 1,1,2,2-Tetrachloroeth...	12.690	84	242200	23.302	ug/L	0.00
Spiked Amount	25.000	Range 45 - 120	Recovery =	93.200%		
66) 1,2-Dichlorobenzene-d4	13.849	152	310488	25.216	ug/L	0.00
Spiked Amount	25.000	Range 75 - 120	Recovery =	100.880%		
Target Compounds						
2) Dichlorodifluoromethane	2.021	85	203705	23.588	ug/L	90
3) Chloromethane	2.223	50	266451	25.942	ug/L	99
5) Vinyl chloride	2.375	62	300244	25.874	ug/L	99
6) Bromomethane	2.790	94	161031	26.029	ug/L	99
8) Chloroethane	2.930	64	174127	26.109	ug/L	99
9) Trichlorofluoromethane	3.271	101	260302	25.917	ug/L	99
10) 1,1,2-Trichloro-1,2,2-...	4.076	101	256654	26.351	ug/L	98
12) 1,1-Dichloroethene	4.045	96	242989	25.785	ug/L	91
13) Acetone	4.125	43	140231	47.299	ug/L	99
14) Carbon disulfide	4.393	76	804428	27.455	ug/L	99
16) Methylene chloride	4.917	84	258633	24.579	ug/L	95
17) trans-1,2-Dichloroethene	5.435	96	255629	25.877	ug/L	97
18) Methyl tert-butyl Ether	5.429	73	348449	23.430	ug/L	99
19) 1,1-Dichloroethane	6.216	63	532457	26.029	ug/L	100
20) cis-1,2-Dichloroethene	7.173	96	278366	25.737	ug/L #	98
22) 2-Butanone	7.173	43	166067	43.300	ug/L	100
23) Bromochloromethane	7.514	128	111701	24.016	ug/L	91
25) Chloroform	7.679	83	493557	25.665	ug/L	98
27) 1,2-Dichloroethane	8.398	62	316479	24.660	ug/L	98

Data Path : Z:\voasrv\HPCHEM1\MSVOA_W\Data\VW031623\
 Data File : VW025391.D
 Acq On : 16 Mar 2023 11:05
 Operator : SY/MD
 Sample : VSTDCCC025
 Misc : 5.00g/10mL/MSVOA_W/SOIL
 ALS Vial : 1 Sample Multiplier: 1

Instrument :
 MSVOA_W
 ClientSampleId :
 VSTD025548

Quant Time: Mar 17 01:32:09 2023
 Quant Method : Z:\voasrv\HPCHEM1\MSVOA_W\Method\SFAMWLM030623SMA.M
 Quant Title : SFAM01.0
 QLast Update : Fri Mar 10 23:28:46 2023
 Response via : Initial Calibration

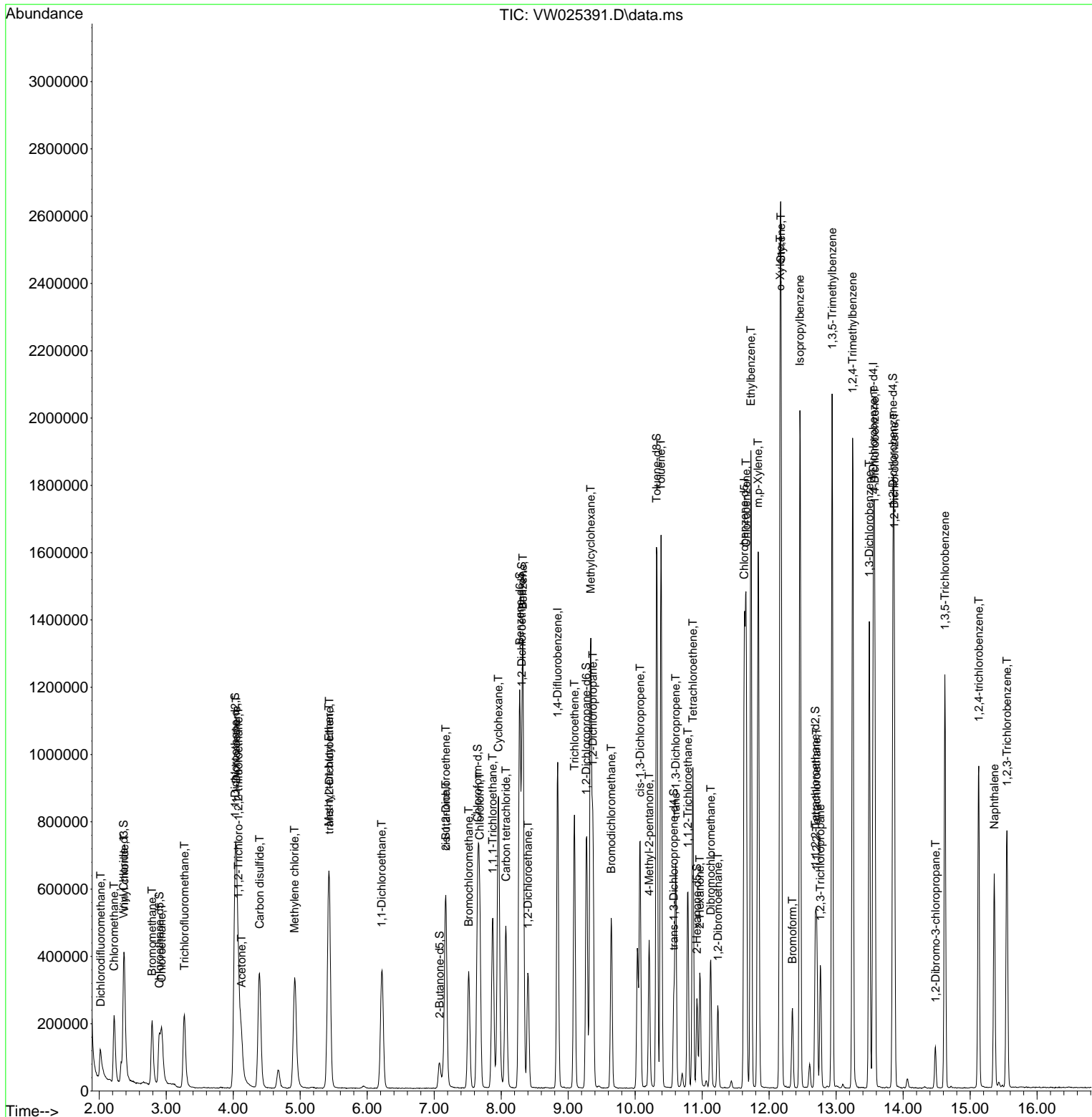
Compound	R.T.	QIon	Response	Conc	Units	Dev(Min)
29) Cyclohexane	7.959	56	503530	26.579	ug/L	99
30) 1,1,1-Trichloroethane	7.874	97	399779	25.057	ug/L	99
31) Carbon tetrachloride	8.069	117	359259	25.121	ug/L	98
33) Benzene	8.325	78	1113860	25.958	ug/L	100
34) Trichloroethene	9.093	95	284638	25.274	ug/L	99
35) Methylcyclohexane	9.337	83	510947	26.336	ug/L	99
37) 1,2-Dichloropropane	9.368	63	297706	25.205	ug/L	100
38) Bromodichloromethane	9.642	83	338624	24.583	ug/L	99
39) cis-1,3-Dichloropropene	10.075	75	434983	25.563	ug/L	98
40) 4-Methyl-2-pentanone	10.209	43	300154	42.281	ug/L	99
42) Toluene	10.386	91	1158574	26.150	ug/L	98
44) trans-1,3-Dichloropropene	10.605	75	348897	24.484	ug/L	99
45) 1,1,2-Trichloroethane	10.788	97	180418	22.745	ug/L	97
46) Tetrachloroethene	10.861	164	197889	24.695	ug/L	91
48) 2-Hexanone	10.965	43	225798	44.210	ug/L	99
49) Dibromochloromethane	11.130	129	200231	23.625	ug/L	100
50) 1,2-Dibromoethane	11.233	107	162690	22.158	ug/L	94
51) Chlorobenzene	11.654	112	698840	24.854	ug/L	99
52) Ethylbenzene	11.727	91	1310479	25.935	ug/L	98
53) m,p-Xylene	11.837	106	488695	26.222	ug/L	95
54) o-Xylene	12.166	106	456519	26.032	ug/L	94
55) Styrene	12.178	104	775688	25.901	ug/L	95
57) 1,1,2,2-Tetrachloroethane	12.709	83	211357	21.421	ug/L	99
59) Bromoform	12.349	173	104199	21.812	ug/L	98
60) Isopropylbenzene	12.459	105	1262382	25.575	ug/L	100
61) 1,2,3-Trichloropropane	12.763	75	153247	21.243	ug/L	99
62) 1,3,5-Trimethylbenzene	12.940	105	1051091	26.887	ug/L	97
63) 1,2,4-Trimethylbenzene	13.245	105	1016958	26.407	ug/L	100
64) 1,3-Dichlorobenzene	13.495	146	517671	24.751	ug/L	97
65) 1,4-Dichlorobenzene	13.574	146	520327	24.253	ug/L	95
67) 1,2-Dichlorobenzene	13.867	146	463695	24.719	ug/L	98
68) 1,2-Dibromo-3-chloropr...	14.483	75	31933	19.120	ug/L	92
69) 1,3,5-Trichlorobenzene	14.623	180	350601	24.659	ug/L	97
70) 1,2,4-trichlorobenzene	15.129	180	282647	23.977	ug/L	99
71) Naphthalene	15.360	128	507228	21.798	ug/L	100
72) 1,2,3-Trichlorobenzene	15.549	180	241966	22.853	ug/L	99

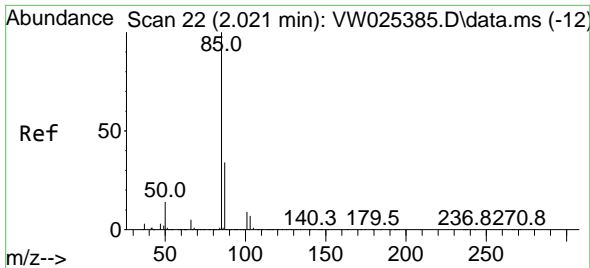
(#) = qualifier out of range (m) = manual integration (+) = signals summed

Data Path : Z:\voasrv\HPCHEM1\MSVOA_W\Data\VW031623\
 Data File : VW025391.D
 Acq On : 16 Mar 2023 11:05
 Operator : SY/MD
 Sample : VSTDC025
 Misc : 5.00g/10mL/MSVOA_W/SOIL
 ALS Vial : 1 Sample Multiplier: 1

Instrument :
 MSVOA_W
 ClientSampleId :
 VSTD025548

Quant Time: Mar 17 01:32:09 2023
 Quant Method : Z:\voasrv\HPCHEM1\MSVOA_W\Method\SFAMWLM030623SMA.M
 Quant Title : SFAM01.0
 QLast Update : Fri Mar 10 23:28:46 2023
 Response via : Initial Calibration

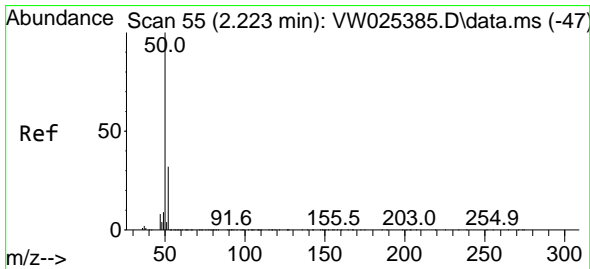
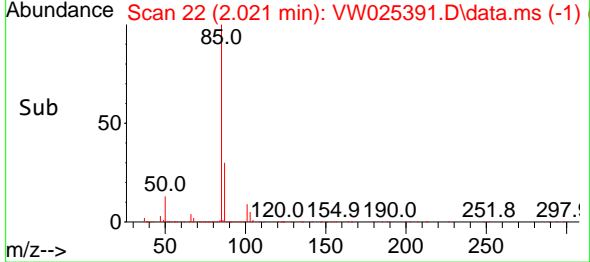
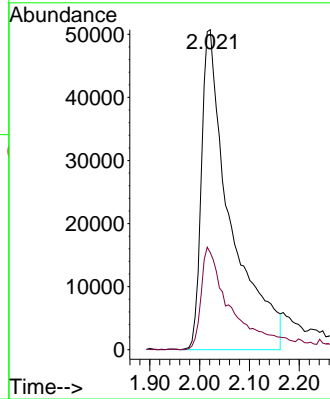
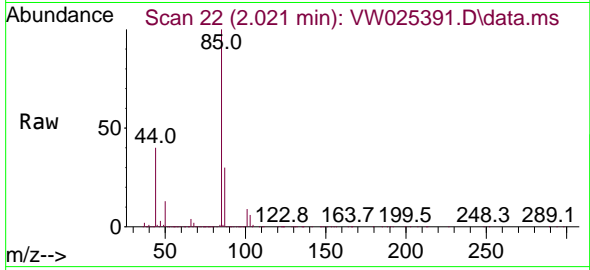




#2
 Dichlorodifluoromethane
 Concen: 23.588 ug/L
 RT: 2.021 min Scan# 21
 Delta R.T. 0.000 min
 Lab File: VW025391.D
 Acq: 16 Mar 2023 11:05

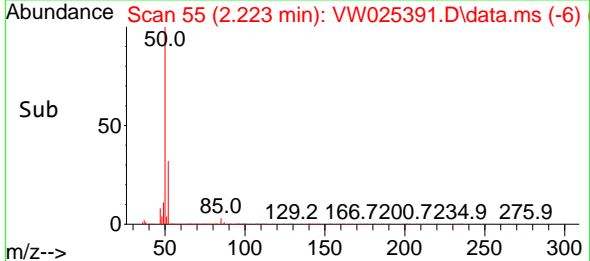
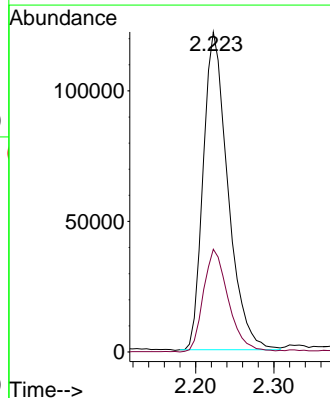
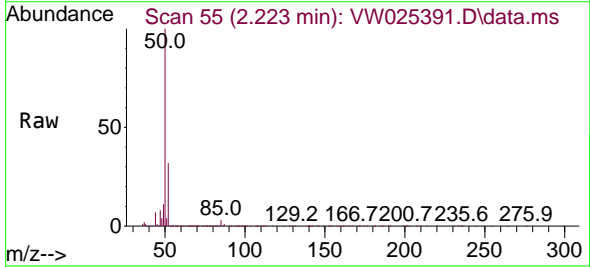
Instrument :
 MSVOA_W
 ClientSampleId :
 VSTD025548

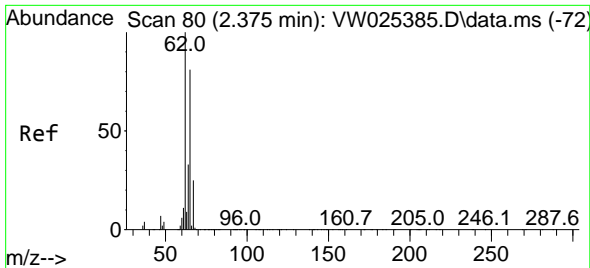
Tgt Ion: 85 Resp: 203705
 Ion Ratio Lower Upper
 85 100
 87 20.5 20.5 30.7



#3
 Chloromethane
 Concen: 25.942 ug/L
 RT: 2.223 min Scan# 55
 Delta R.T. 0.000 min
 Lab File: VW025391.D
 Acq: 16 Mar 2023 11:05

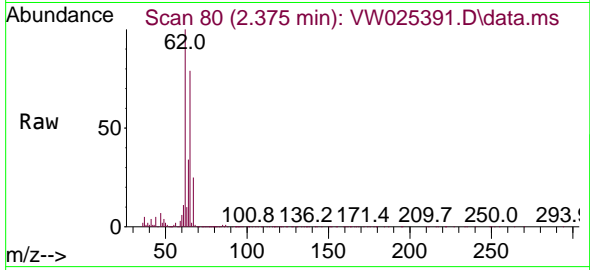
Tgt Ion: 50 Resp: 266451
 Ion Ratio Lower Upper
 50 100
 52 32.1 21.9 40.7



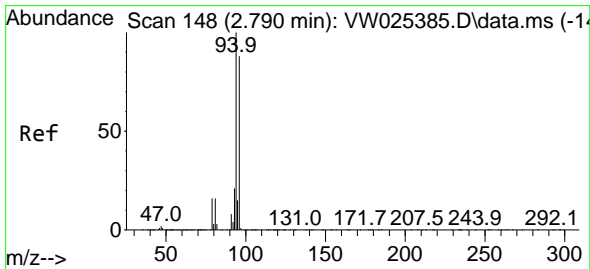
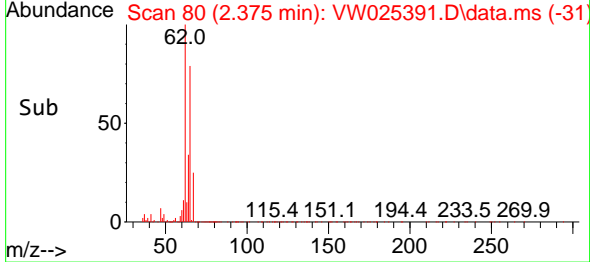
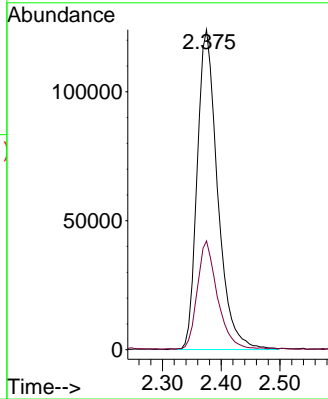


#5
 Vinyl chloride
 Concen: 25.874 ug/L
 RT: 2.375 min Scan# 80
 Delta R.T. 0.000 min
 Lab File: VW025391.D
 Acq: 16 Mar 2023 11:05

Instrument : MSVOA_W
 ClientSampleId : VSTD025548

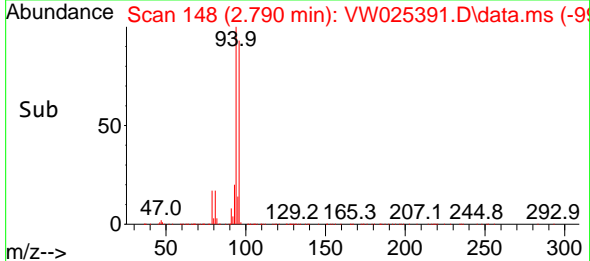
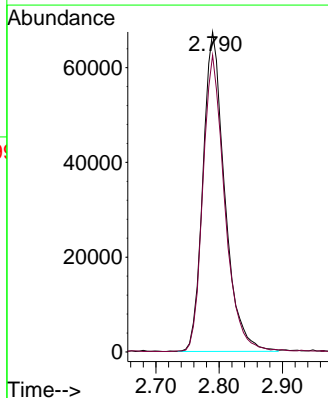
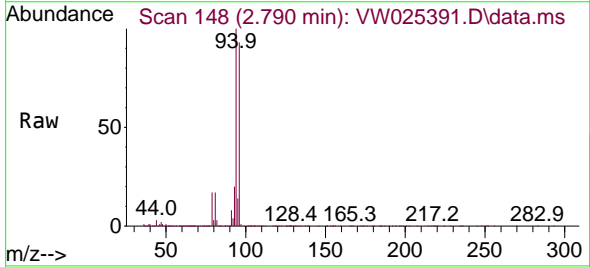


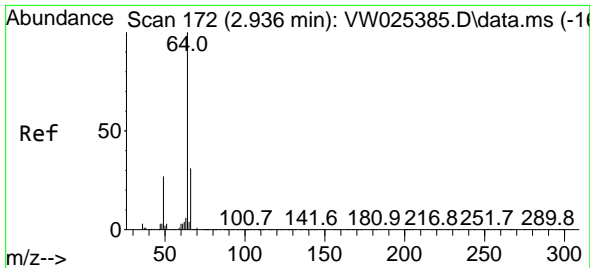
Tgt Ion: 62 Resp: 300244
 Ion Ratio Lower Upper
 62 100
 64 34.0 23.4 43.6



#6
 Bromomethane
 Concen: 26.029 ug/L
 RT: 2.790 min Scan# 148
 Delta R.T. 0.000 min
 Lab File: VW025391.D
 Acq: 16 Mar 2023 11:05

Tgt Ion: 94 Resp: 161031
 Ion Ratio Lower Upper
 94 100
 96 92.8 64.5 119.9

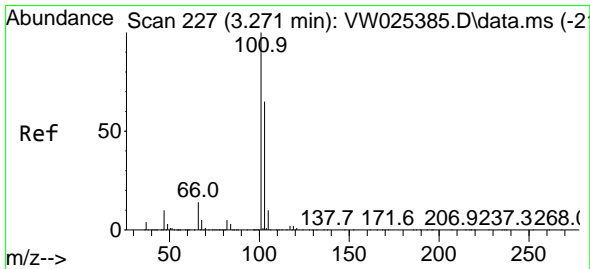
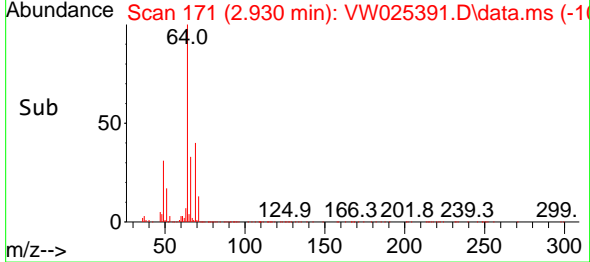
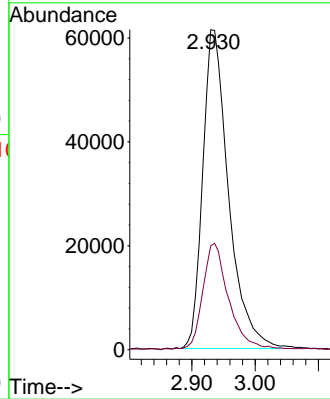
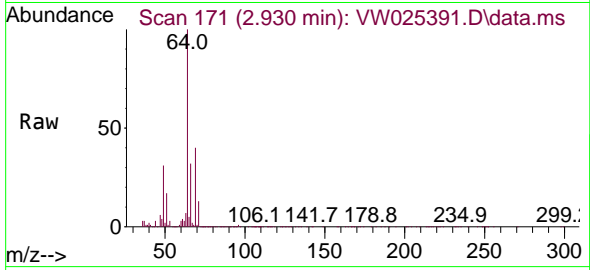




#8
 Chloroethane
 Concen: 26.109 ug/L
 RT: 2.930 min Scan# 171
 Delta R.T. -0.006 min
 Lab File: VW025391.D
 Acq: 16 Mar 2023 11:05

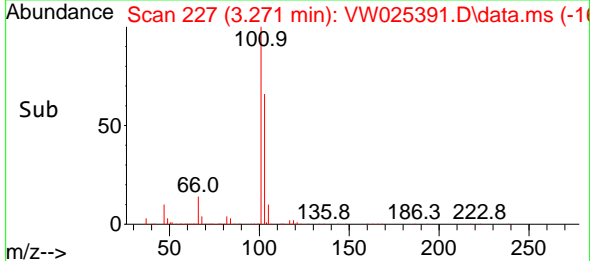
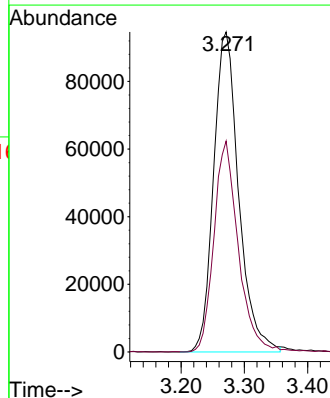
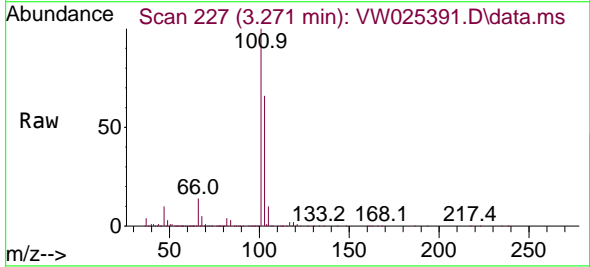
Instrument : MSVOA_W
 ClientSampleId : VSTD025548

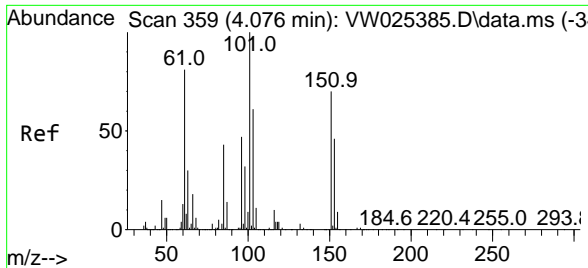
Tgt Ion: 64 Resp: 174127
 Ion Ratio Lower Upper
 64 100
 66 32.5 23.3 43.3



#9
 Trichlorofluoromethane
 Concen: 25.917 ug/L
 RT: 3.271 min Scan# 227
 Delta R.T. 0.000 min
 Lab File: VW025391.D
 Acq: 16 Mar 2023 11:05

Tgt Ion: 101 Resp: 260302
 Ion Ratio Lower Upper
 101 100
 103 63.7 51.5 77.3



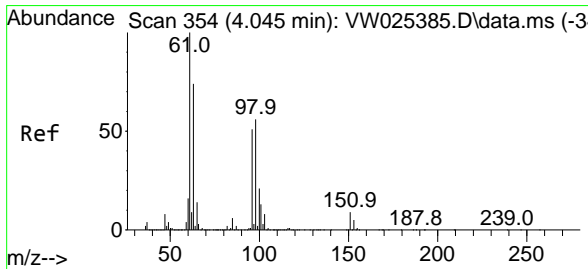
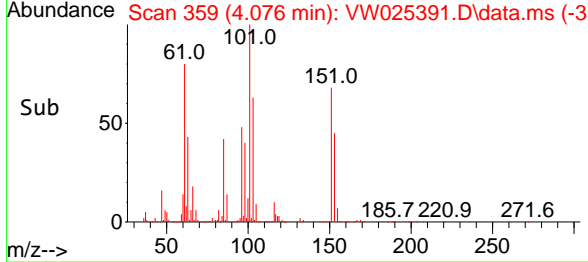
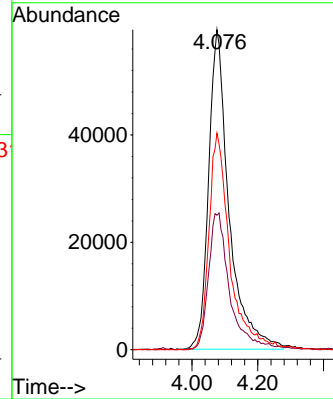
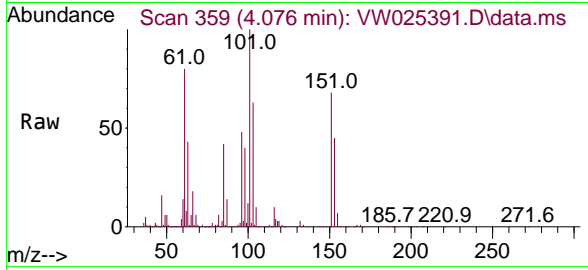


#10
 1,1,2-Trichloro-1,2,2-trifluoroethane
 Concen: 26.351 ug/L
 RT: 4.076 min Scan# 311
 Delta R.T. 0.000 min
 Lab File: VW025391.D
 Acq: 16 Mar 2023 11:05

Instrument :
 MSVOA_W
 ClientSampleId :
 VSTD025548

Tgt Ion:101 Resp: 256654

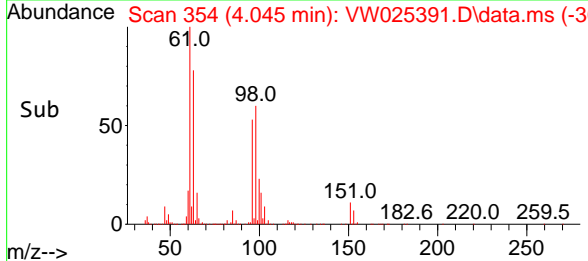
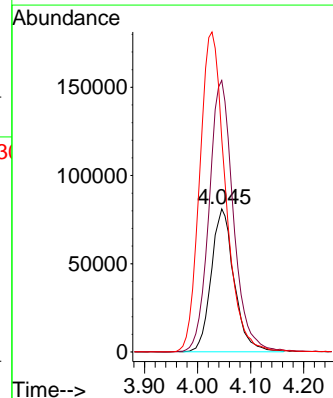
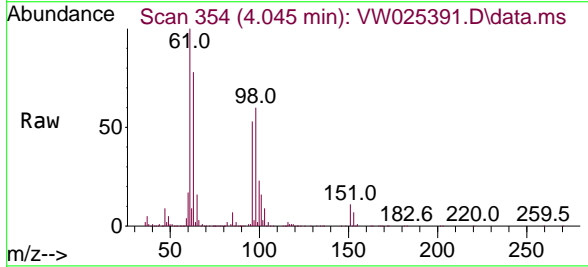
Ion	Ratio	Lower	Upper
101	100		
85	43.3	35.8	53.8
151	66.3	54.2	81.2

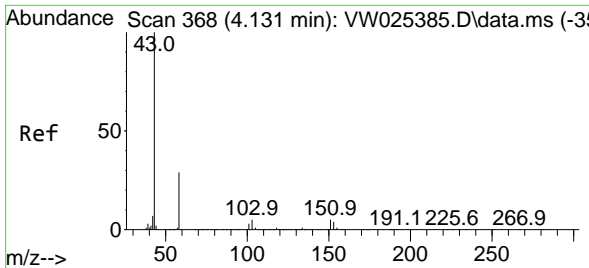


#12
 1,1-Dichloroethene
 Concen: 25.785 ug/L
 RT: 4.045 min Scan# 354
 Delta R.T. 0.000 min
 Lab File: VW025391.D
 Acq: 16 Mar 2023 11:05

Tgt Ion: 96 Resp: 242989

Ion	Ratio	Lower	Upper
96	100		
61	189.9	130.7	242.7
63	148.9	88.3	164.1

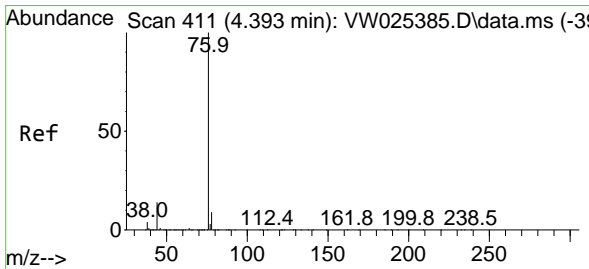
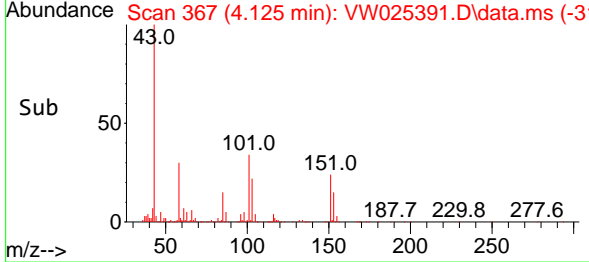
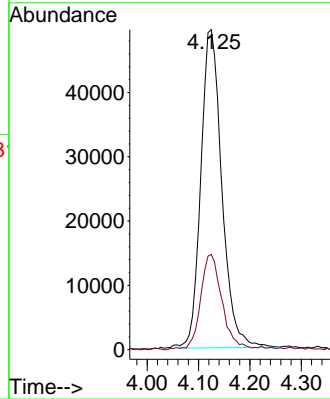
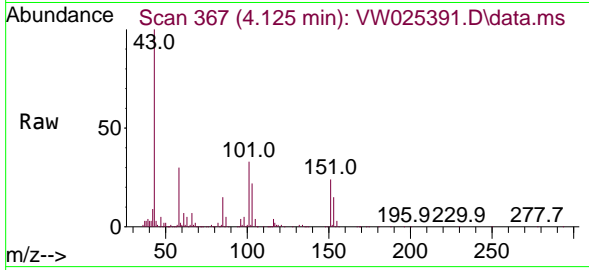




#13
 Acetone
 Concen: 47.299 ug/L
 RT: 4.125 min Scan# 367
 Delta R.T. -0.006 min
 Lab File: VW025391.D
 Acq: 16 Mar 2023 11:05

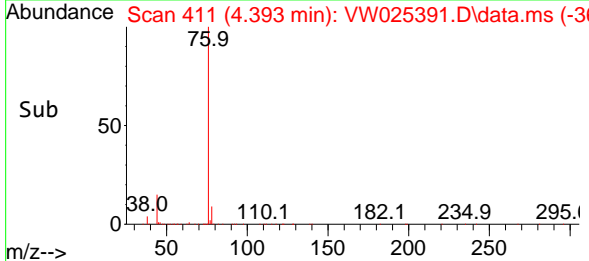
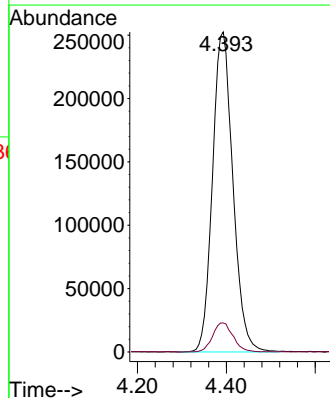
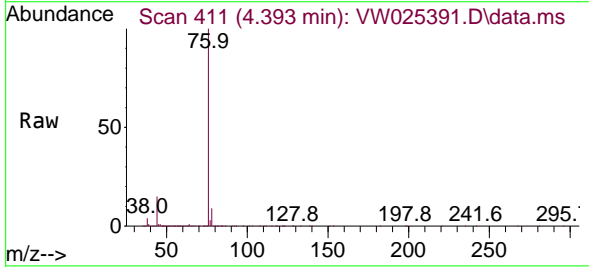
Instrument : MSVOA_W
 ClientSampleId : VSTD025548

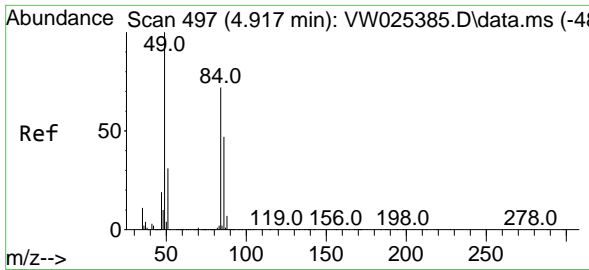
Tgt Ion: 43 Resp: 140231
 Ion Ratio Lower Upper
 43 100
 58 30.3 0.0 60.0



#14
 Carbon disulfide
 Concen: 27.455 ug/L
 RT: 4.393 min Scan# 411
 Delta R.T. 0.000 min
 Lab File: VW025391.D
 Acq: 16 Mar 2023 11:05

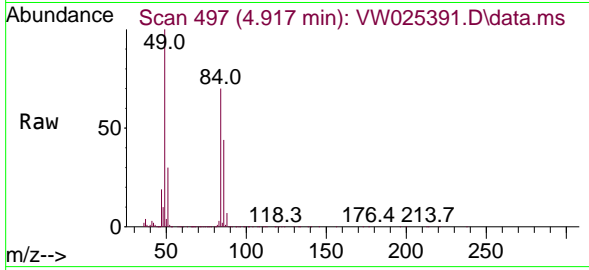
Tgt Ion: 76 Resp: 804428
 Ion Ratio Lower Upper
 76 100
 78 9.1 7.6 11.4



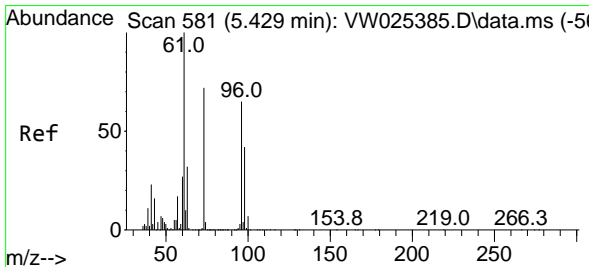
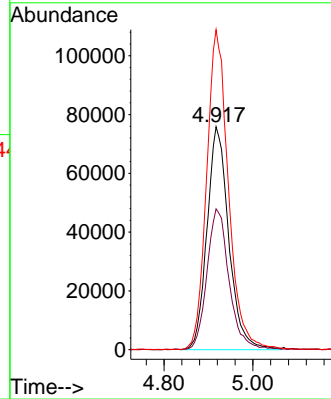
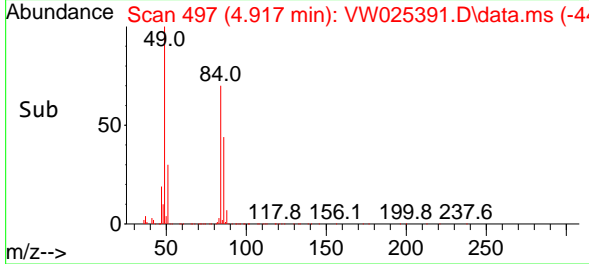


#16
 Methylene chloride
 Concen: 24.579 ug/L
 RT: 4.917 min Scan# 49
 Delta R.T. 0.000 min
 Lab File: VW025391.D
 Acq: 16 Mar 2023 11:05

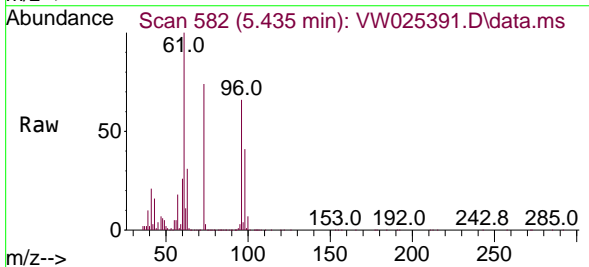
Instrument :
 MSVOA_W
 ClientSampleId :
 VSTD025548



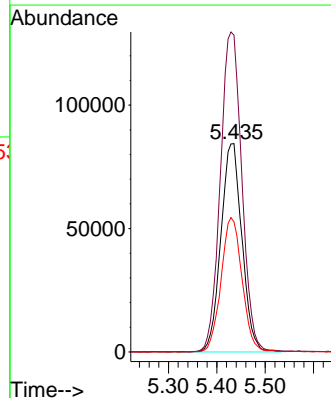
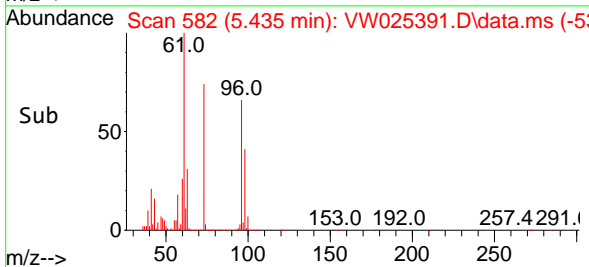
Tgt Ion: 84 Resp: 258633
 Ion Ratio Lower Upper
 84 100
 86 63.2 45.1 83.7
 49 143.6 94.7 175.9

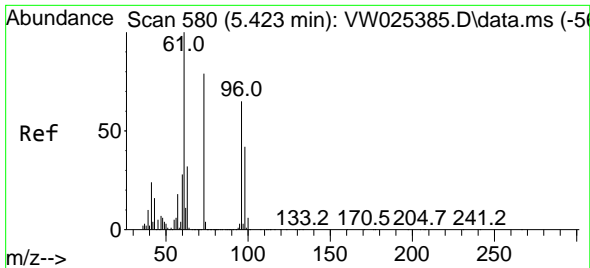


#17
 trans-1,2-Dichloroethene
 Concen: 25.877 ug/L
 RT: 5.435 min Scan# 582
 Delta R.T. 0.006 min
 Lab File: VW025391.D
 Acq: 16 Mar 2023 11:05



Tgt Ion: 96 Resp: 255629
 Ion Ratio Lower Upper
 96 100
 61 152.1 103.0 191.4
 98 62.5 43.4 80.6



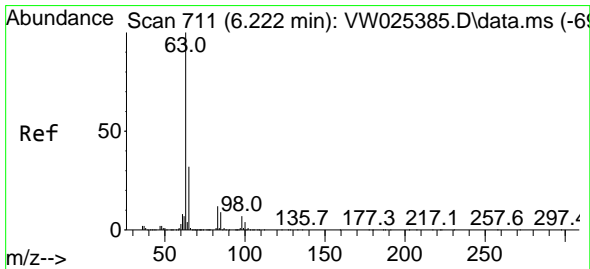
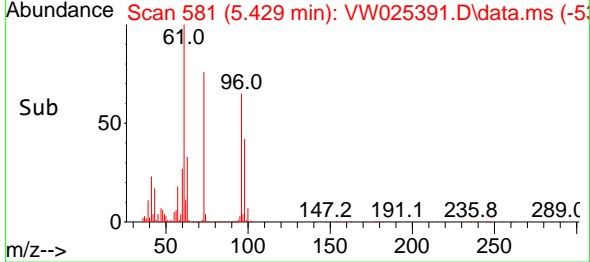
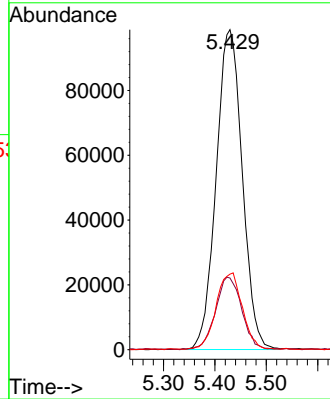
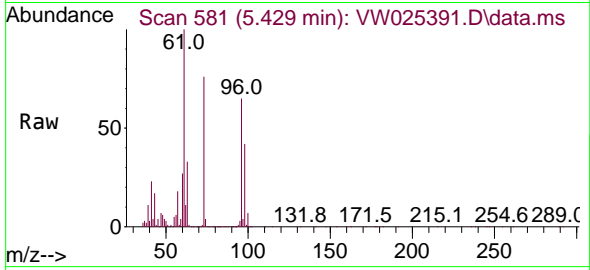


#18
 Methyl tert-butyl Ether
 Concen: 23.430 ug/L
 RT: 5.429 min Scan# 580
 Delta R.T. 0.006 min
 Lab File: VW025391.D
 Acq: 16 Mar 2023 11:05

Instrument : MSVOA_W
 ClientSampleId : VSTD025548

Tgt Ion: 73 Resp: 348449

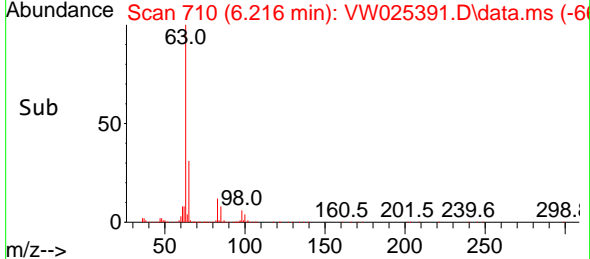
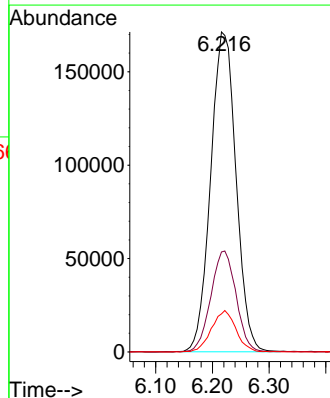
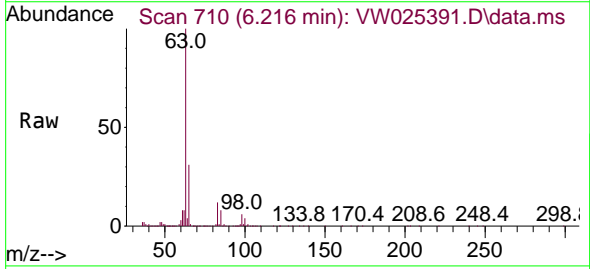
Ion	Ratio	Lower	Upper
73	100		
43	22.4	17.6	26.4
57	23.9	18.6	28.0

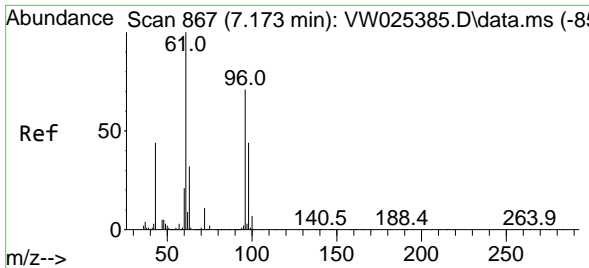


#19
 1,1-Dichloroethane
 Concen: 26.029 ug/L
 RT: 6.216 min Scan# 710
 Delta R.T. -0.006 min
 Lab File: VW025391.D
 Acq: 16 Mar 2023 11:05

Tgt Ion: 63 Resp: 532457

Ion	Ratio	Lower	Upper
63	100		
65	31.2	21.7	40.3
83	11.9	8.4	15.6

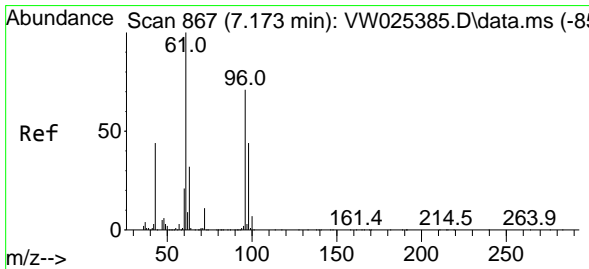
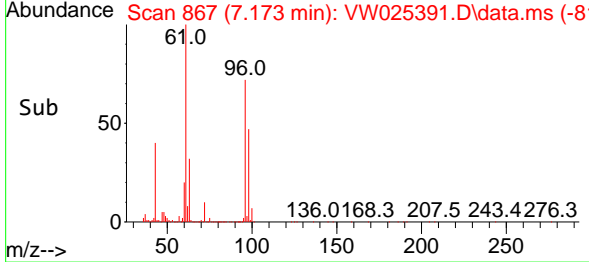
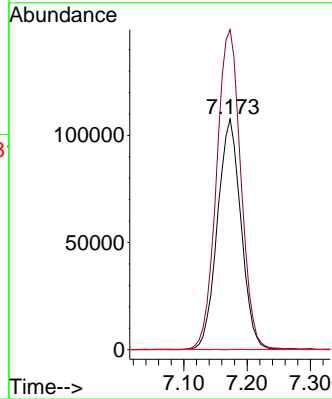
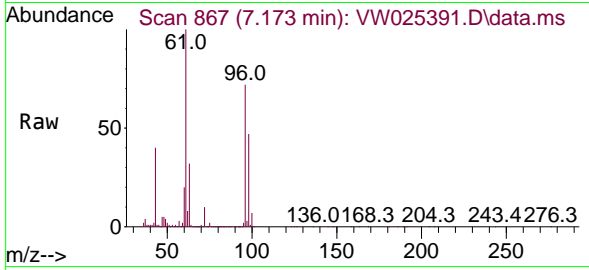




#20
 cis-1,2-Dichloroethene
 Concen: 25.737 ug/L
 RT: 7.173 min Scan# 80
 Delta R.T. 0.000 min
 Lab File: VW025391.D
 Acq: 16 Mar 2023 11:05

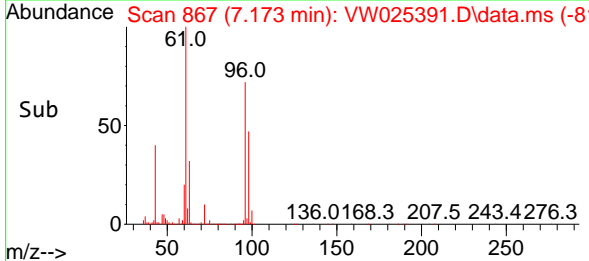
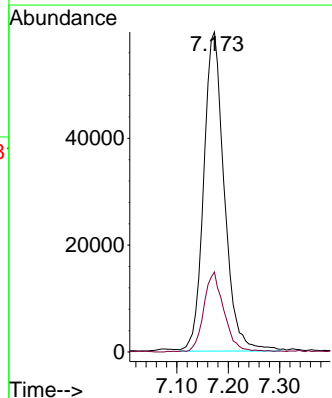
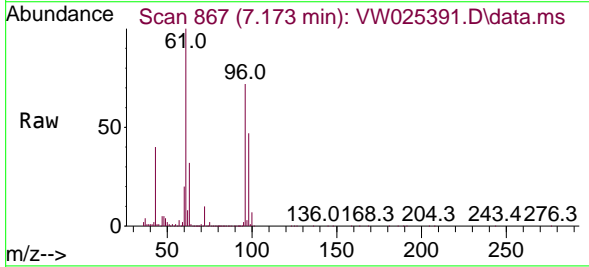
Instrument : MSVOA_W
 ClientSampleId : VSTD025548

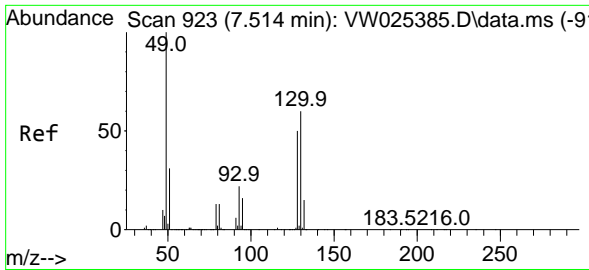
Tgt Ion: 96 Resp: 278366
 Ion Ratio Lower Upper
 96 100
 61 138.8 95.5 177.4
 68 0.1 0.1 0.1#



#22
 2-Butanone
 Concen: 43.300 ug/L
 RT: 7.173 min Scan# 867
 Delta R.T. 0.000 min
 Lab File: VW025391.D
 Acq: 16 Mar 2023 11:05

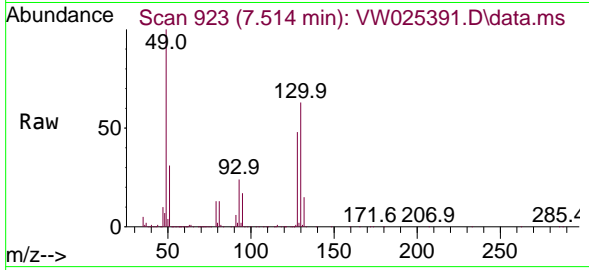
Tgt Ion: 43 Resp: 166067
 Ion Ratio Lower Upper
 43 100
 72 24.3 12.0 36.1



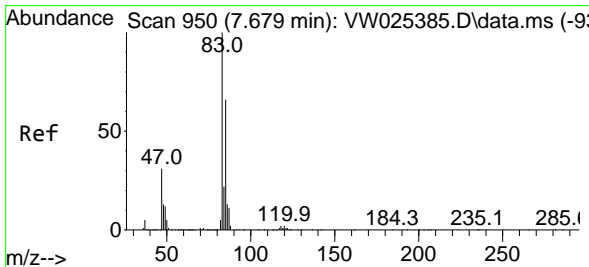
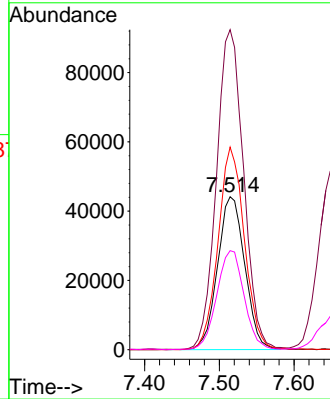
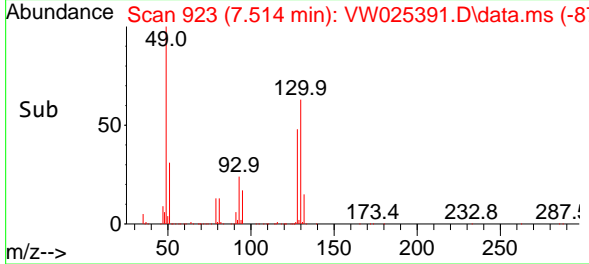


#23
 Bromochloromethane
 Concen: 24.016 ug/L
 RT: 7.514 min Scan# 911
 Delta R.T. 0.000 min
 Lab File: VW025391.D
 Acq: 16 Mar 2023 11:05

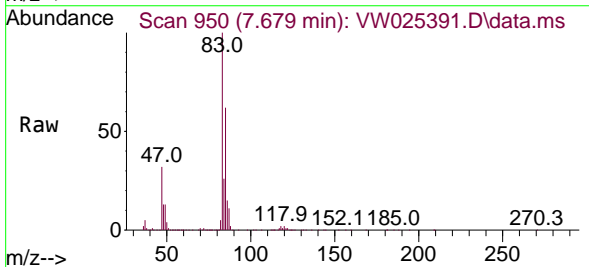
Instrument :
 MSVOA_W
 ClientSampleId :
 VSTD025548



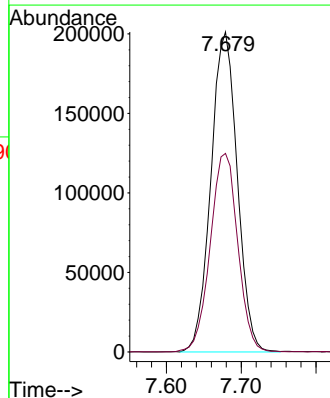
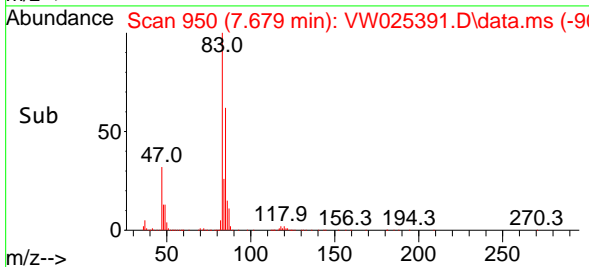
Tgt Ion:128 Resp: 111701
 Ion Ratio Lower Upper
 128 100
 49 209.2 140.6 261.0
 130 132.5 80.8 150.0
 51 64.7 48.7 73.1

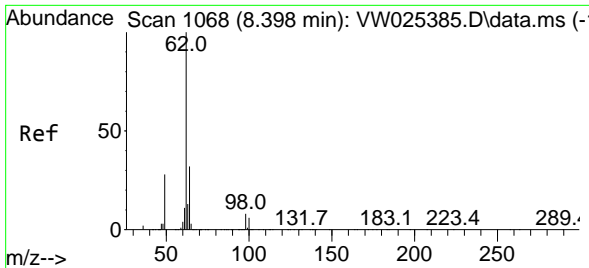


#25
 Chloroform
 Concen: 25.665 ug/L
 RT: 7.679 min Scan# 950
 Delta R.T. 0.000 min
 Lab File: VW025391.D
 Acq: 16 Mar 2023 11:05



Tgt Ion: 83 Resp: 493557
 Ion Ratio Lower Upper
 83 100
 85 62.0 44.7 82.9

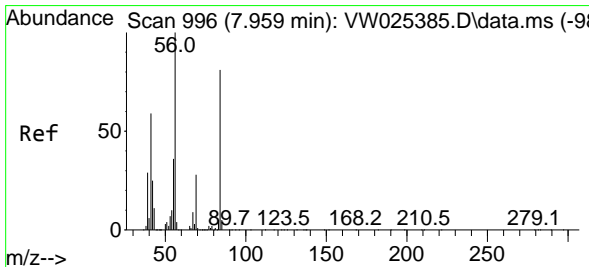
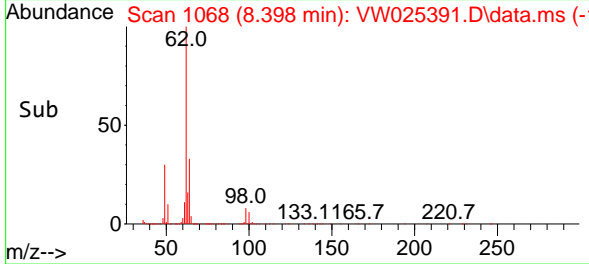
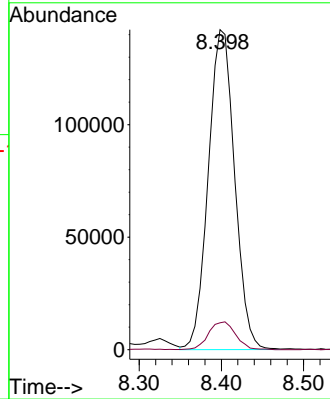
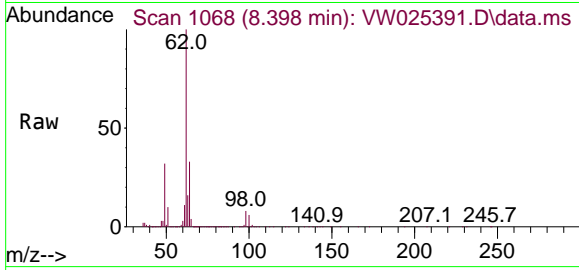




#27
 1,2-Dichloroethane
 Concen: 24.660 ug/L
 RT: 8.398 min Scan# 1068
 Delta R.T. 0.000 min
 Lab File: VW025391.D
 Acq: 16 Mar 2023 11:05

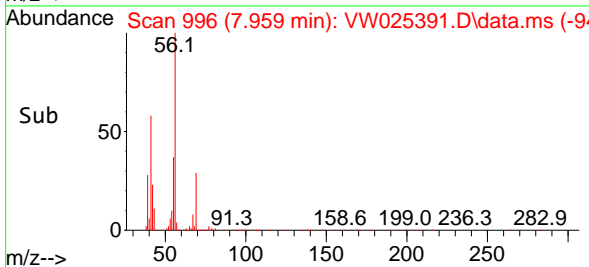
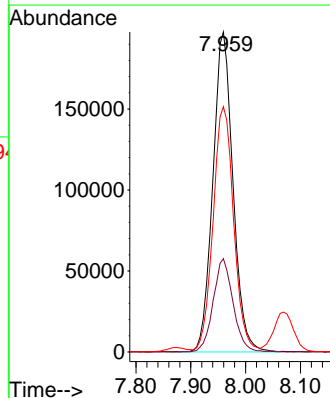
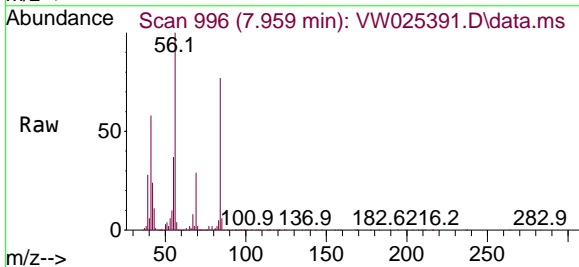
Instrument :
 MSVOA_W
 ClientSampleId :
 VSTD025548

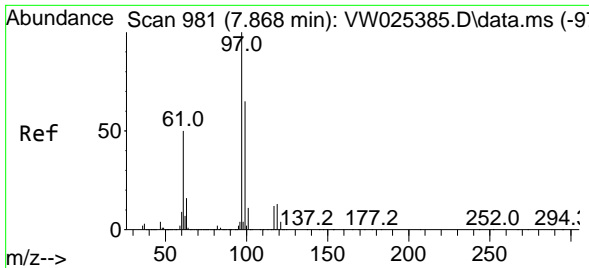
Tgt Ion: 62 Resp: 316479
 Ion Ratio Lower Upper
 62 100
 98 8.4 7.2 10.8



#29
 Cyclohexane
 Concen: 26.579 ug/L
 RT: 7.959 min Scan# 996
 Delta R.T. 0.000 min
 Lab File: VW025391.D
 Acq: 16 Mar 2023 11:05

Tgt Ion: 56 Resp: 503530
 Ion Ratio Lower Upper
 56 100
 69 28.6 23.1 34.7
 84 78.4 63.9 95.9



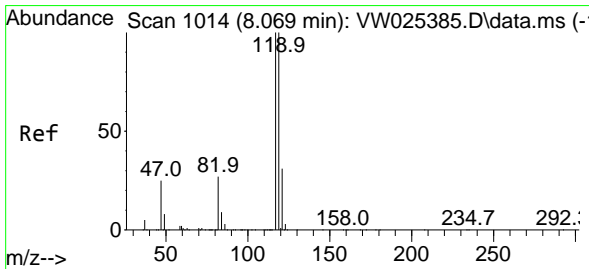
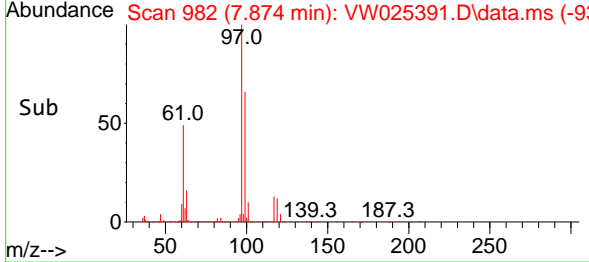
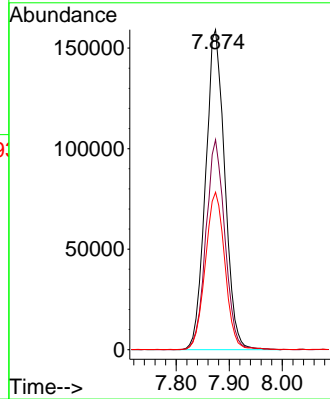
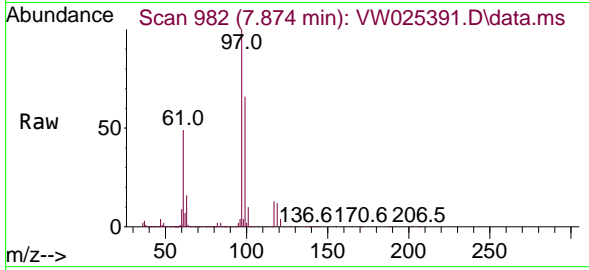


#30
 1,1,1-Trichloroethane
 Concen: 25.057 ug/L
 RT: 7.874 min Scan# 981
 Delta R.T. 0.006 min
 Lab File: VW025391.D
 Acq: 16 Mar 2023 11:05

Instrument :
 MSVOA_W
 ClientSampleId :
 VSTD025548

Tgt Ion: 97 Resp: 399779

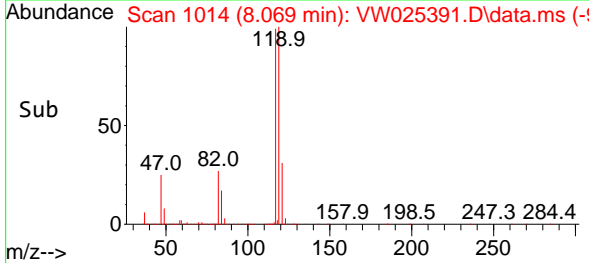
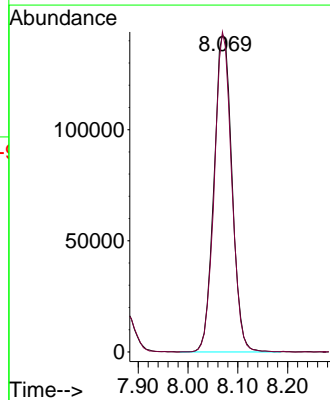
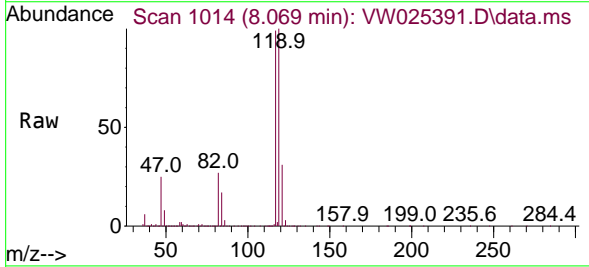
Ion	Ratio	Lower	Upper
97	100		
99	64.6	50.9	76.3
61	49.9	39.8	59.6

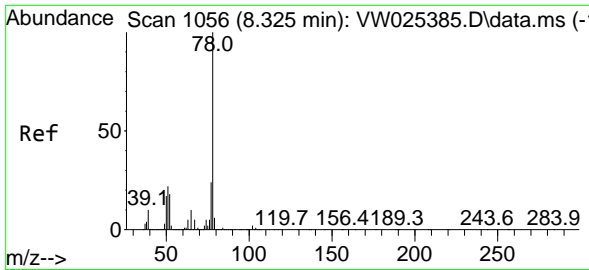


#31
 Carbon tetrachloride
 Concen: 25.121 ug/L
 RT: 8.069 min Scan# 1014
 Delta R.T. 0.000 min
 Lab File: VW025391.D
 Acq: 16 Mar 2023 11:05

Tgt Ion: 117 Resp: 359259

Ion	Ratio	Lower	Upper
117	100		
119	97.0	75.8	113.6

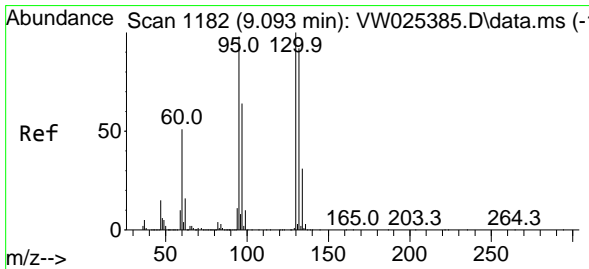
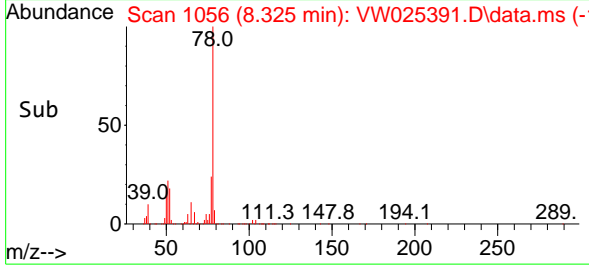
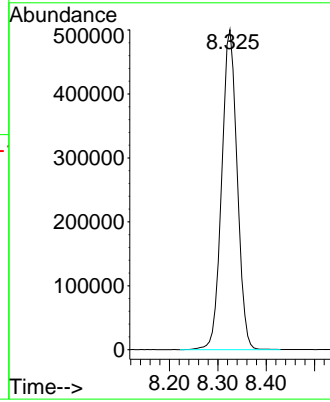
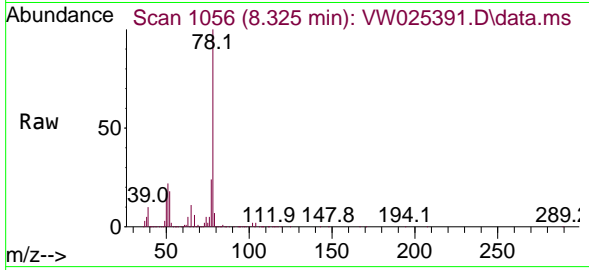




#33
Benzene
Concen: 25.958 ug/L
RT: 8.325 min Scan# 1056
Delta R.T. 0.000 min
Lab File: VW025391.D
Acq: 16 Mar 2023 11:05

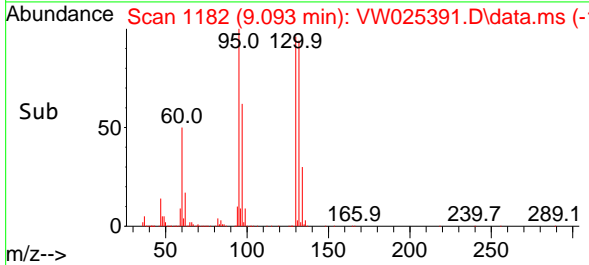
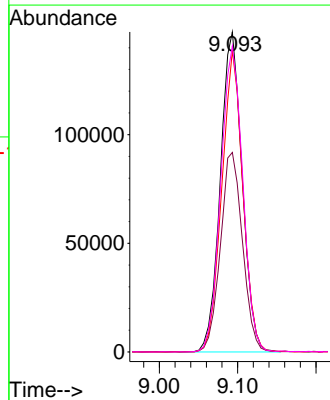
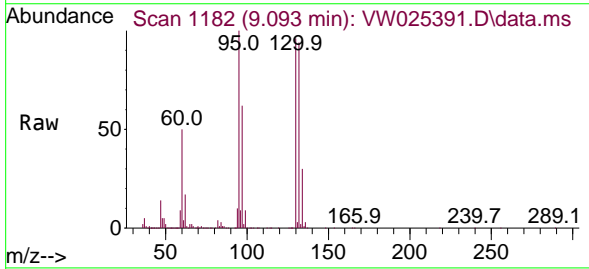
Instrument : MSVOA_W
Client Sample Id : VSTD025548

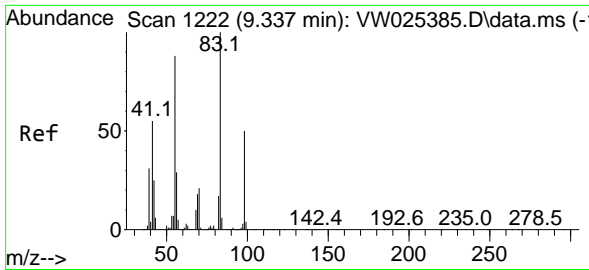
Tgt Ion: 78 Resp: 1113860



#34
Trichloroethene
Concen: 25.274 ug/L
RT: 9.093 min Scan# 1182
Delta R.T. 0.000 min
Lab File: VW025391.D
Acq: 16 Mar 2023 11:05

Tgt Ion: 95 Resp: 284638
Ion Ratio Lower Upper
95 100
97 62.4 43.8 81.4
132 94.2 65.9 122.3
130 95.7 68.3 126.8



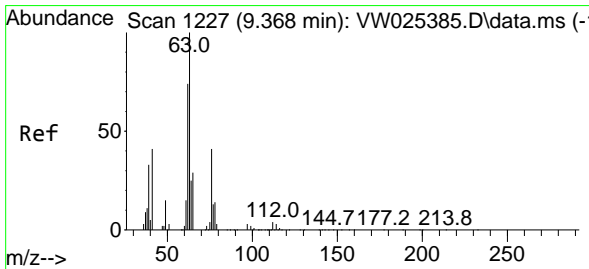
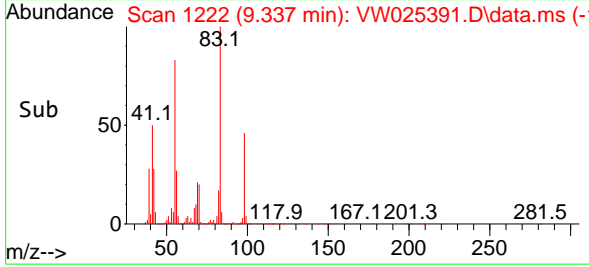
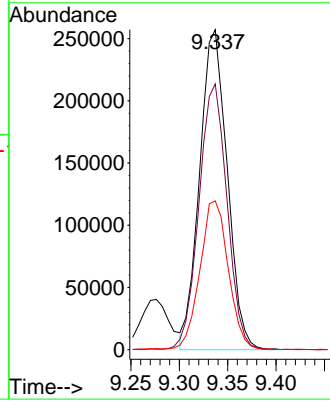
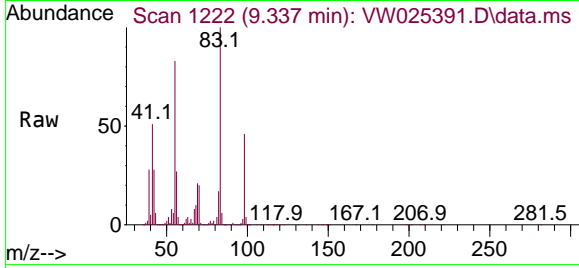


#35
 Methylcyclohexane
 Concen: 26.336 ug/L
 RT: 9.337 min Scan# 11
 Delta R.T. 0.000 min
 Lab File: VW025391.D
 Acq: 16 Mar 2023 11:05

Instrument :
 MSVOA_W
 ClientSampleId :
 VSTD025548

Tgt Ion: 83 Resp: 510947

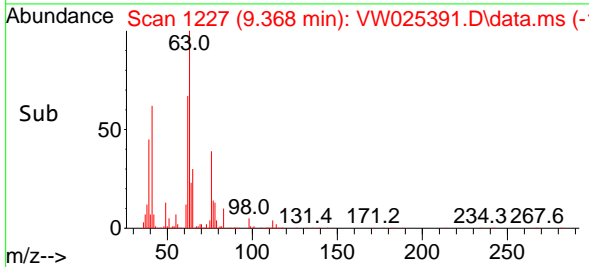
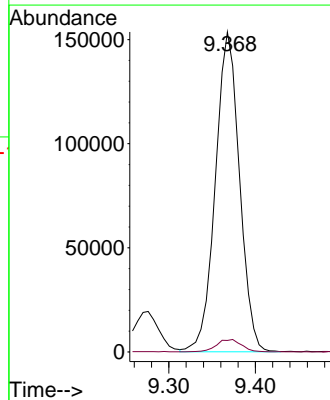
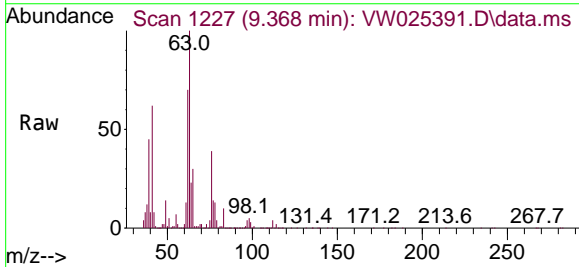
Ion	Ratio	Lower	Upper
83	100		
55	84.4	68.2	102.4
98	47.9	39.0	58.4

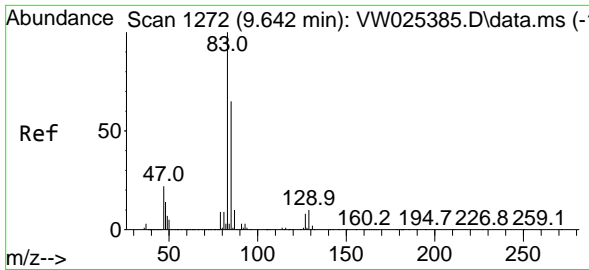


#37
 1,2-Dichloropropane
 Concen: 25.205 ug/L
 RT: 9.368 min Scan# 1227
 Delta R.T. 0.000 min
 Lab File: VW025391.D
 Acq: 16 Mar 2023 11:05

Tgt Ion: 63 Resp: 297706

Ion	Ratio	Lower	Upper
63	100		
112	4.2	3.2	4.8

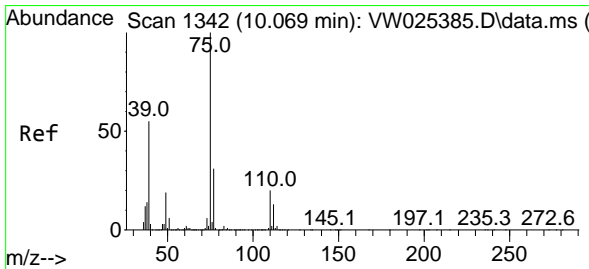
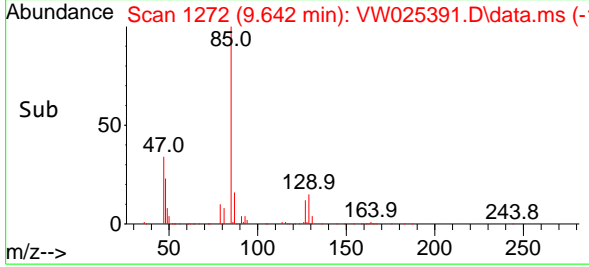
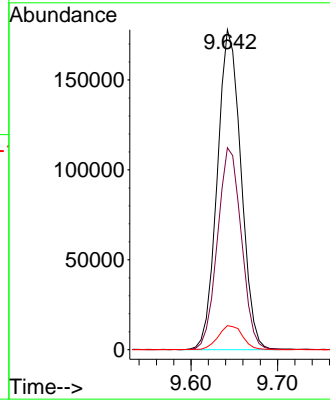
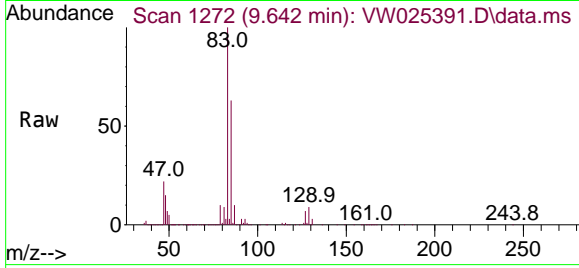




#38
 Bromodichloromethane
 Concen: 24.583 ug/L
 RT: 9.642 min Scan# 11
 Delta R.T. 0.000 min
 Lab File: VW025391.D
 Acq: 16 Mar 2023 11:05

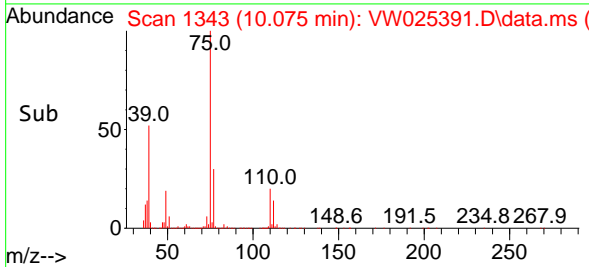
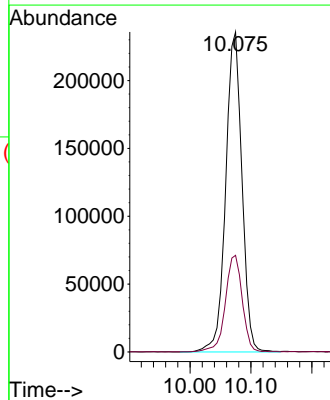
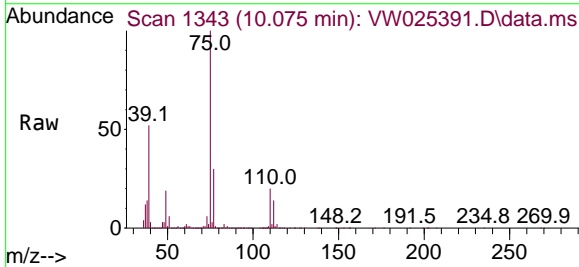
Instrument :
 MSVOA_W
 ClientSampleId :
 VSTD025548

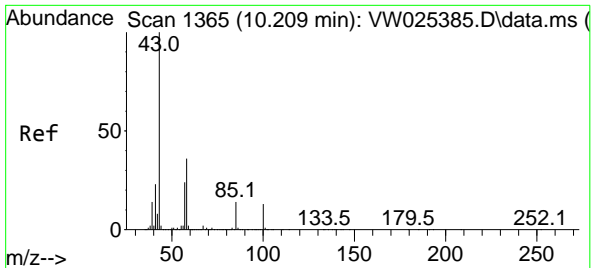
Tgt Ion: 83 Resp: 338624
 Ion Ratio Lower Upper
 83 100
 85 63.1 44.7 83.1
 127 7.5 6.1 9.1



#39
 cis-1,3-Dichloropropene
 Concen: 25.563 ug/L
 RT: 10.075 min Scan# 1343
 Delta R.T. 0.006 min
 Lab File: VW025391.D
 Acq: 16 Mar 2023 11:05

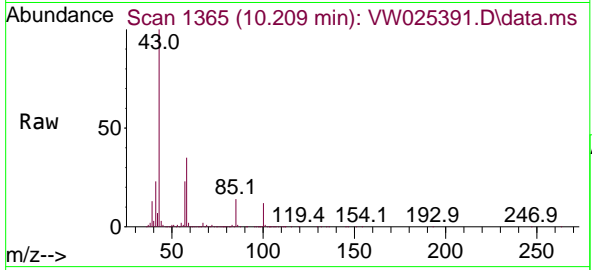
Tgt Ion: 75 Resp: 434983
 Ion Ratio Lower Upper
 75 100
 77 30.2 22.0 41.0





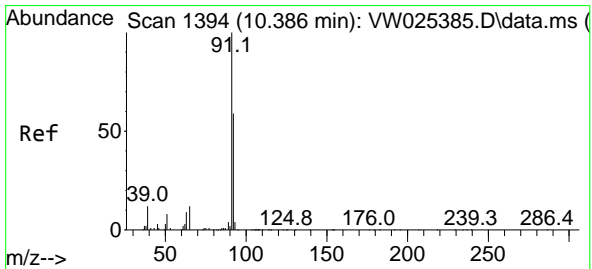
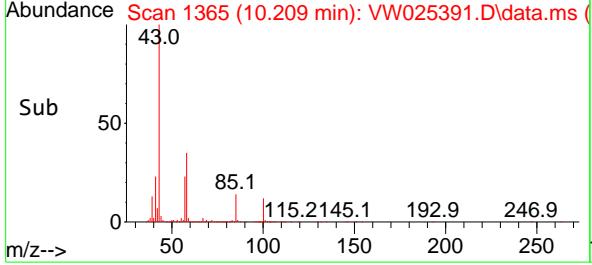
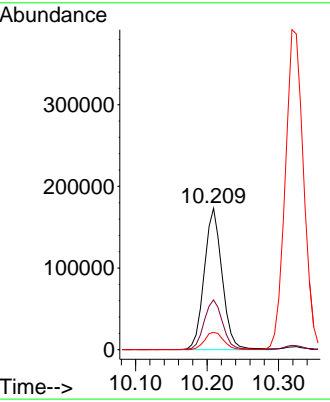
#40
 4-Methyl-2-pentanone
 Concen: 42.281 ug/L
 RT: 10.209 min Scan# 11
 Delta R.T. 0.000 min
 Lab File: VW025391.D
 Acq: 16 Mar 2023 11:05

Instrument : MSVOA_W
 ClientSampleId : VSTD025548

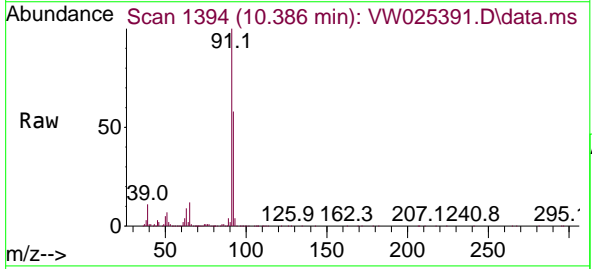


Tgt Ion: 43 Resp: 300154

Ion	Ratio	Lower	Upper
43	100		
58	36.3	29.6	44.4
100	13.2	10.6	16.0

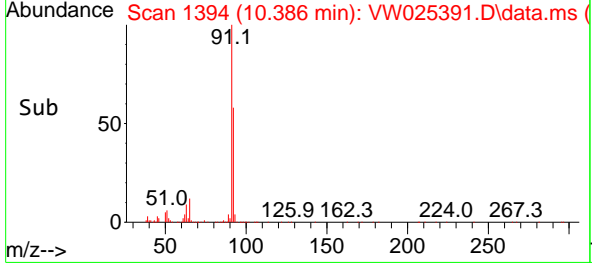
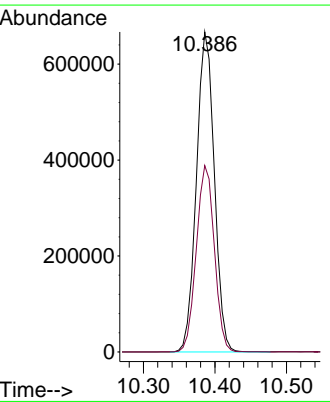


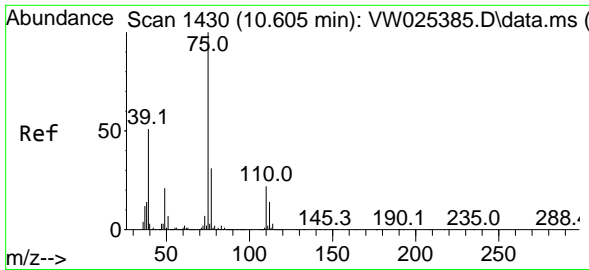
#42
 Toluene
 Concen: 26.150 ug/L
 RT: 10.386 min Scan# 1394
 Delta R.T. 0.000 min
 Lab File: VW025391.D
 Acq: 16 Mar 2023 11:05



Tgt Ion: 91 Resp: 1158574

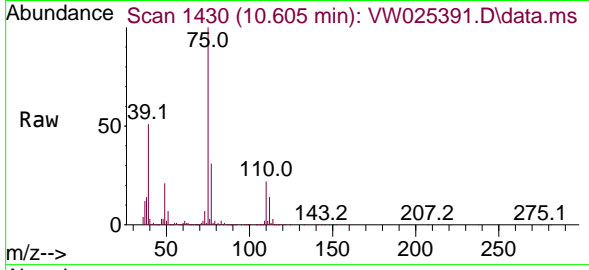
Ion	Ratio	Lower	Upper
91	100		
92	58.2	41.6	77.3



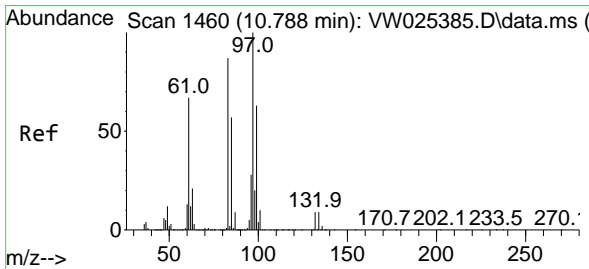
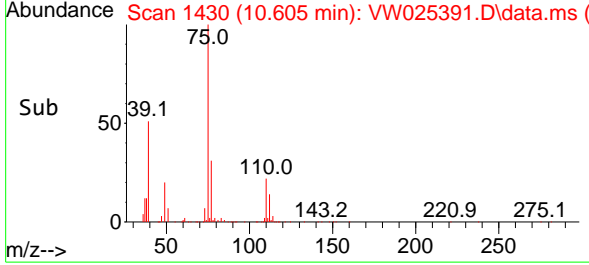
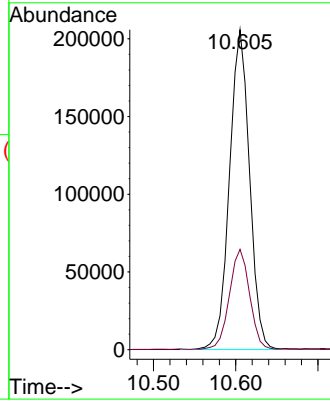


#44
 trans-1,3-Dichloropropene
 Concen: 24.484 ug/L
 RT: 10.605 min Scan# 1430
 Delta R.T. 0.000 min
 Lab File: VW025391.D
 Acq: 16 Mar 2023 11:05

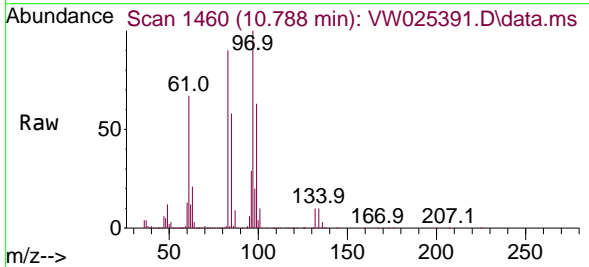
Instrument : MSVOA_W
 ClientSampleId : VSTD025548



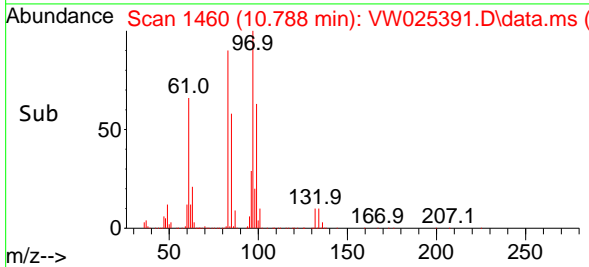
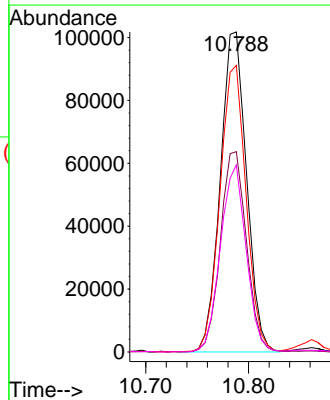
Tgt Ion: 75 Resp: 348897
 Ion Ratio Lower Upper
 75 100
 77 31.4 22.3 41.3

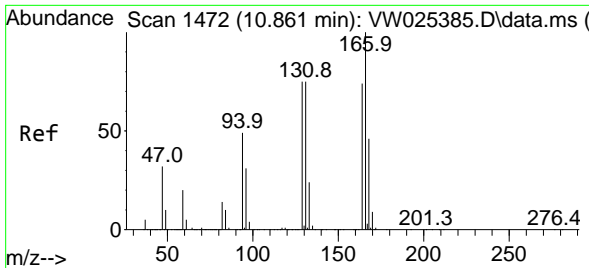


#45
 1,1,2-Trichloroethane
 Concen: 22.745 ug/L
 RT: 10.788 min Scan# 1460
 Delta R.T. 0.000 min
 Lab File: VW025391.D
 Acq: 16 Mar 2023 11:05



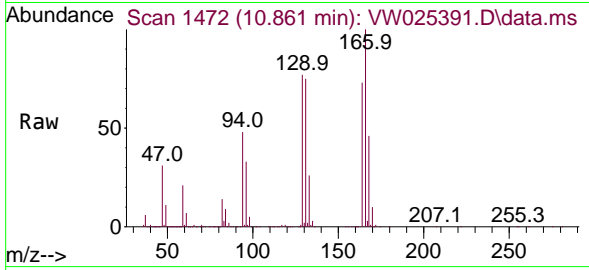
Tgt Ion: 97 Resp: 180418
 Ion Ratio Lower Upper
 97 100
 99 62.6 42.6 79.0
 83 89.6 60.5 112.3
 85 58.5 39.7 73.7





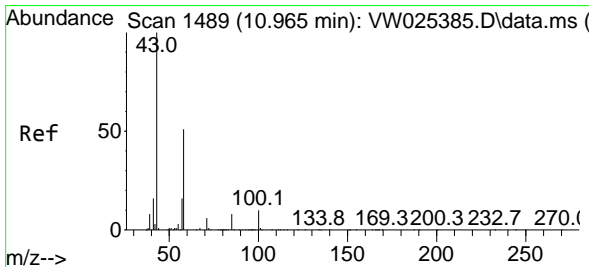
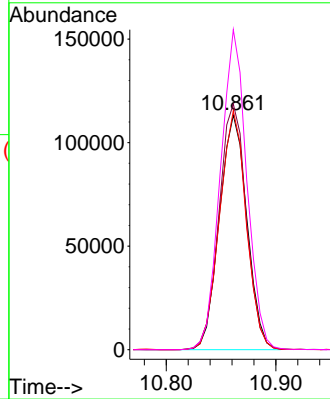
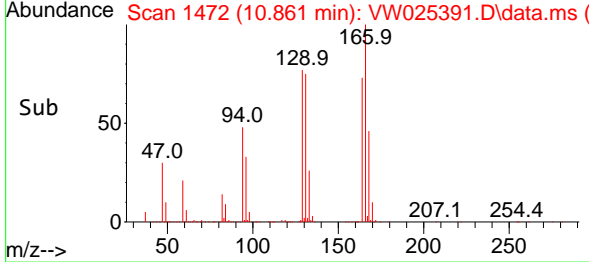
#46
 Tetrachloroethene
 Concen: 24.695 ug/L
 RT: 10.861 min Scan# 1472
 Delta R.T. 0.000 min
 Lab File: VW025391.D
 Acq: 16 Mar 2023 11:05

Instrument : MSVOA_W
 ClientSampleId : VSTD025548

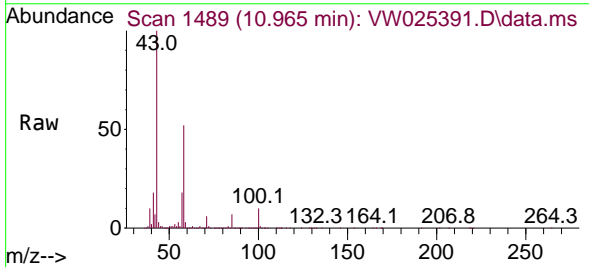


Tgt Ion:164 Resp: 197889

Ion	Ratio	Lower	Upper
164	100		
129	104.8	67.7	125.7
131	101.9	67.0	124.4
166	136.4	86.5	160.7

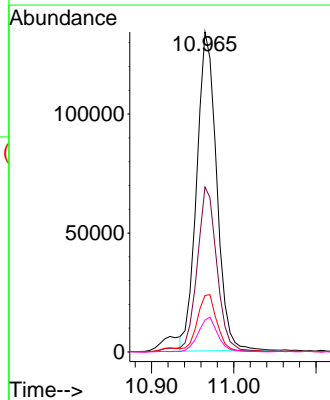
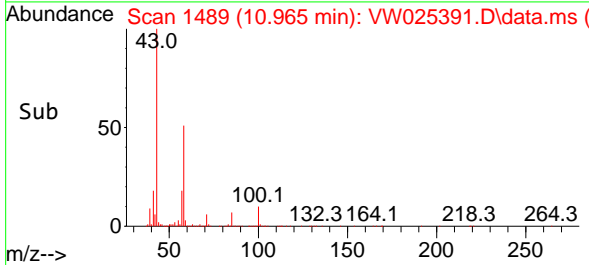


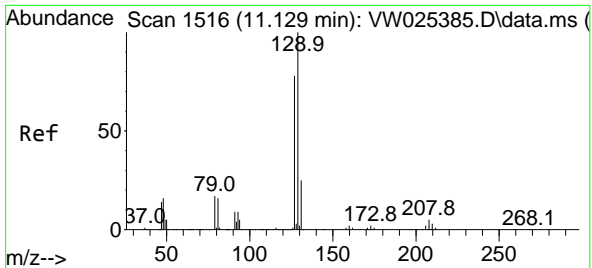
#48
 2-Hexanone
 Concen: 44.210 ug/L
 RT: 10.965 min Scan# 1489
 Delta R.T. 0.000 min
 Lab File: VW025391.D
 Acq: 16 Mar 2023 11:05



Tgt Ion: 43 Resp: 225798

Ion	Ratio	Lower	Upper
43	100		
58	50.5	41.2	61.8
57	18.0	14.2	21.4
100	10.7	8.5	12.7

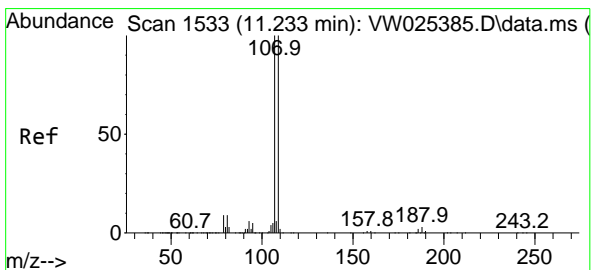
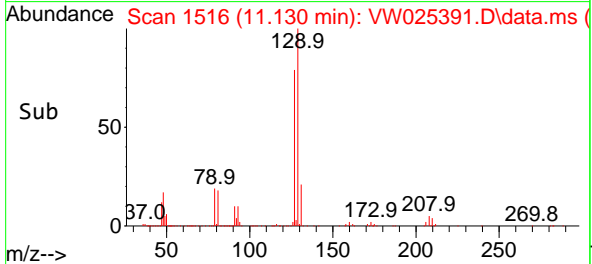
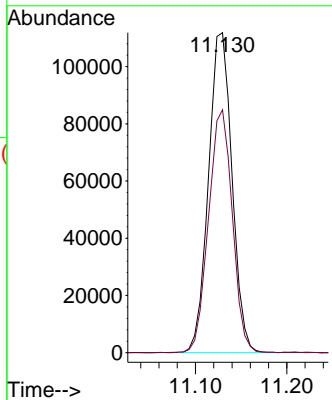
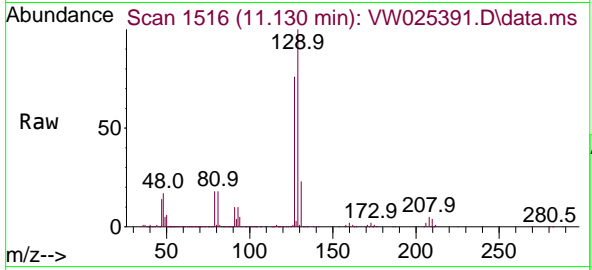




#49
 Dibromochloromethane
 Concen: 23.625 ug/L
 RT: 11.130 min Scan# 11
 Delta R.T. 0.000 min
 Lab File: VW025391.D
 Acq: 16 Mar 2023 11:05

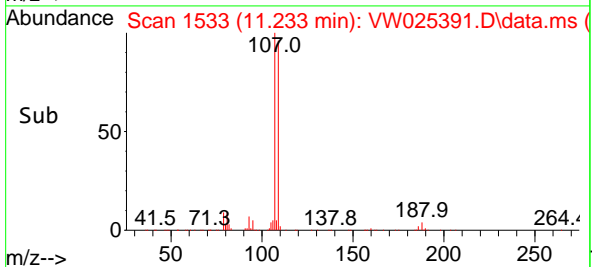
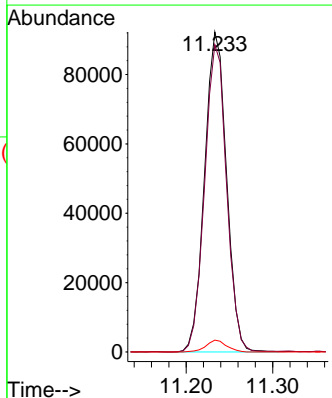
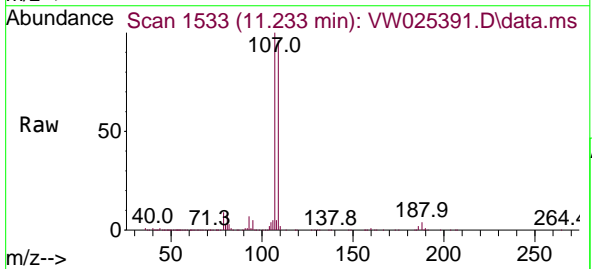
Instrument :
 MSVOA_W
 ClientSampleId :
 VSTD025548

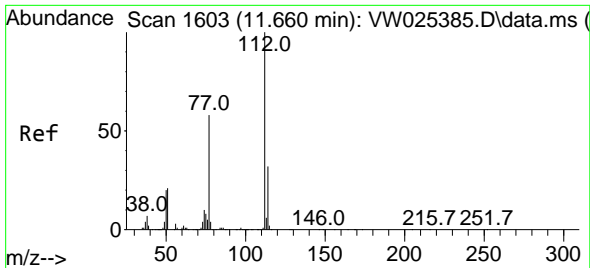
Tgt Ion:129 Resp: 200231
 Ion Ratio Lower Upper
 129 100
 127 75.9 52.8 98.2



#50
 1,2-Dibromoethane
 Concen: 22.158 ug/L
 RT: 11.233 min Scan# 1533
 Delta R.T. 0.000 min
 Lab File: VW025391.D
 Acq: 16 Mar 2023 11:05

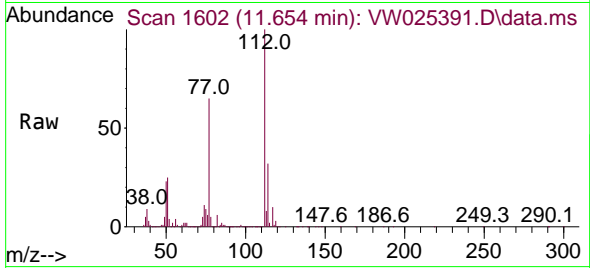
Tgt Ion:107 Resp: 162690
 Ion Ratio Lower Upper
 107 100
 109 96.0 62.9 116.9
 188 3.7 3.0 4.4



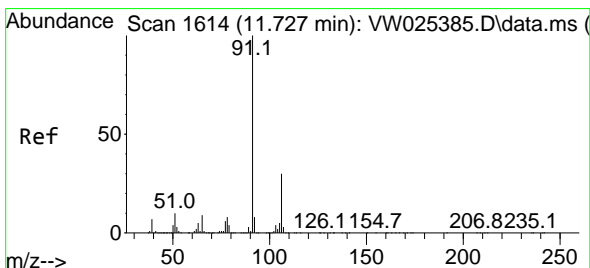
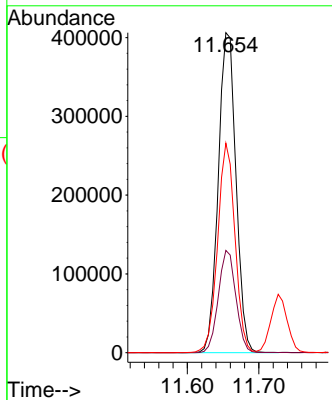
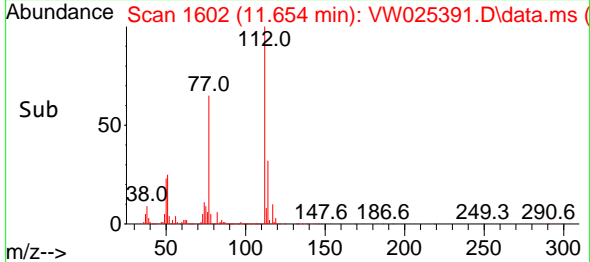


#51
 Chlorobenzene
 Concen: 24.854 ug/L
 RT: 11.654 min Scan# 1602
 Delta R.T. -0.006 min
 Lab File: VW025391.D
 Acq: 16 Mar 2023 11:05

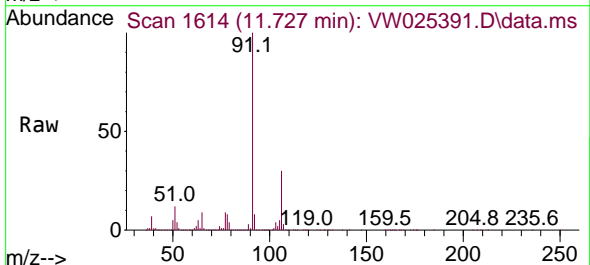
Instrument : MSVOA_W
 ClientSampleId : VSTD025548



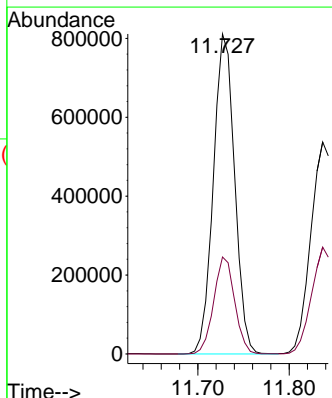
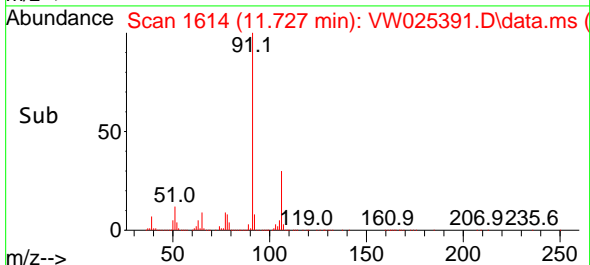
Tgt Ion: 112 Resp: 698840
 Ion Ratio Lower Upper
 112 100
 114 32.0 21.9 40.7
 77 65.5 51.8 77.8

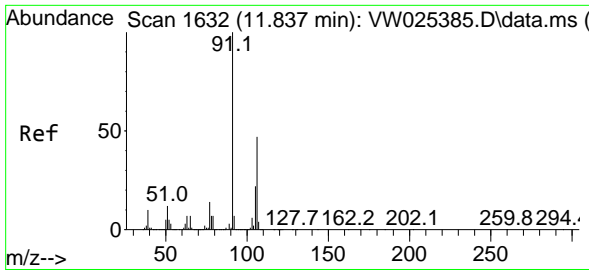


#52
 Ethylbenzene
 Concen: 25.935 ug/L
 RT: 11.727 min Scan# 1614
 Delta R.T. 0.000 min
 Lab File: VW025391.D
 Acq: 16 Mar 2023 11:05



Tgt Ion: 91 Resp: 1310479
 Ion Ratio Lower Upper
 91 100
 106 30.3 22.0 41.0

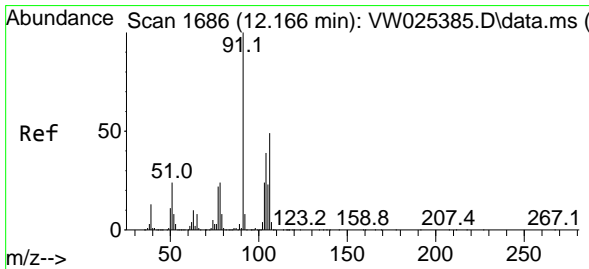
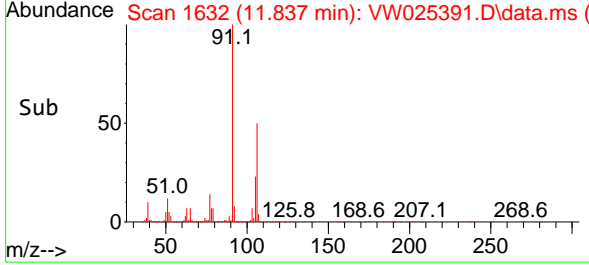
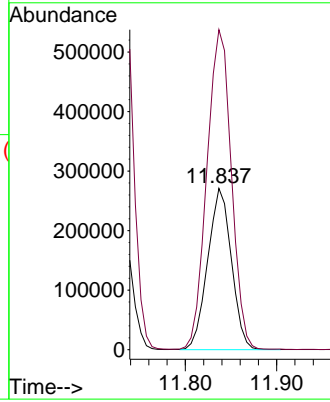
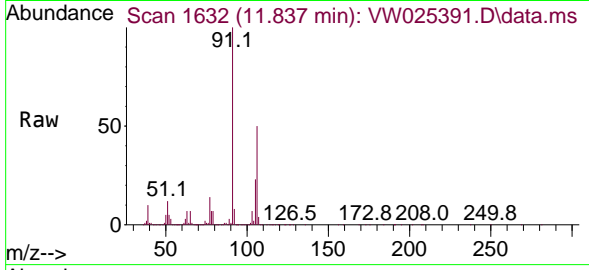




#53
 m,p-Xylene
 Concen: 26.222 ug/L
 RT: 11.837 min Scan# 1632
 Delta R.T. 0.000 min
 Lab File: VW025391.D
 Acq: 16 Mar 2023 11:05

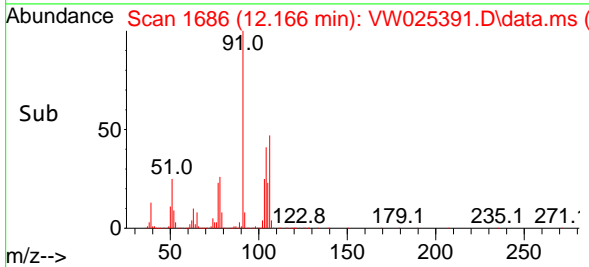
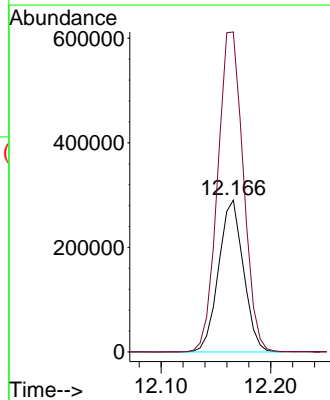
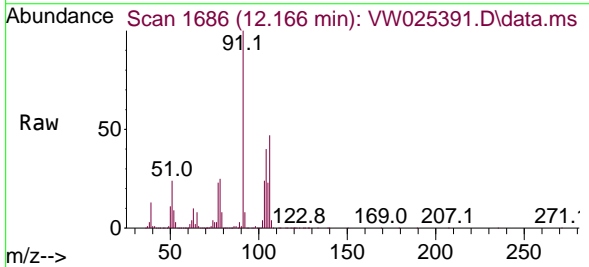
Instrument :
 MSVOA_W
 ClientSampleId :
 VSTD025548

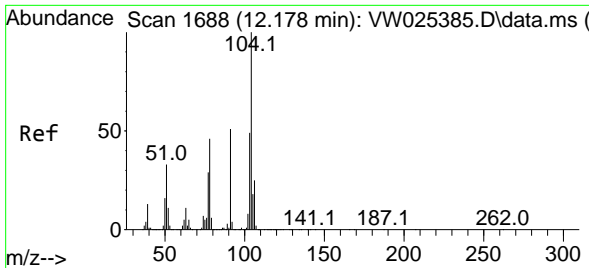
Tgt Ion:106 Resp: 488695
 Ion Ratio Lower Upper
 106 100
 91 198.3 144.2 267.8



#54
 o-Xylene
 Concen: 26.032 ug/L
 RT: 12.166 min Scan# 1686
 Delta R.T. 0.000 min
 Lab File: VW025391.D
 Acq: 16 Mar 2023 11:05

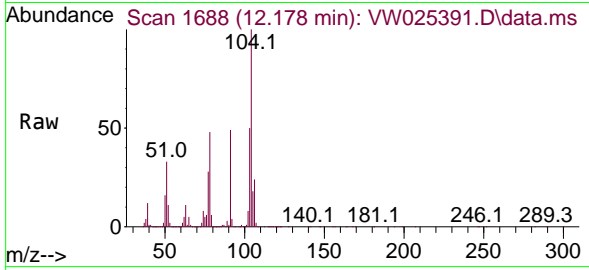
Tgt Ion:106 Resp: 456519
 Ion Ratio Lower Upper
 106 100
 91 210.8 154.6 287.2



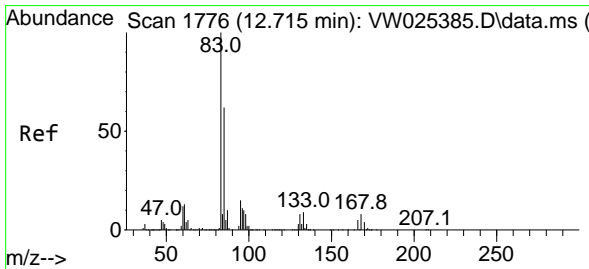
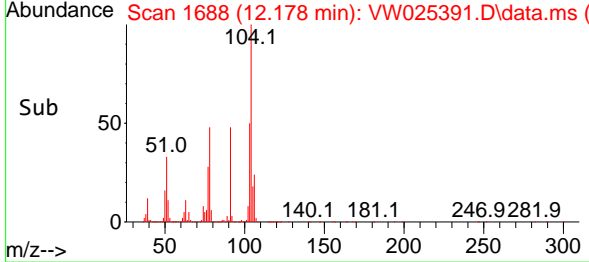
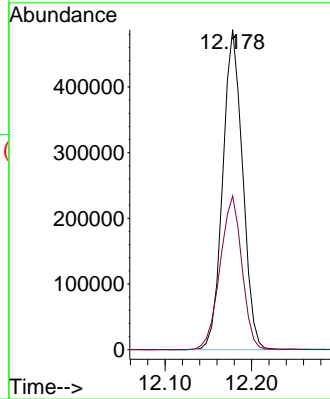


#55
 Styrene
 Concen: 25.901 ug/L
 RT: 12.178 min Scan# 1688
 Delta R.T. 0.000 min
 Lab File: VW025391.D
 Acq: 16 Mar 2023 11:05

Instrument : MSVOA_W
 ClientSampleId : VSTD025548

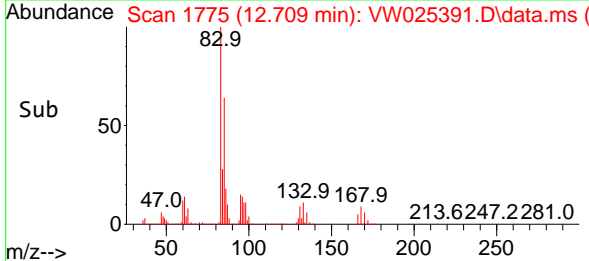
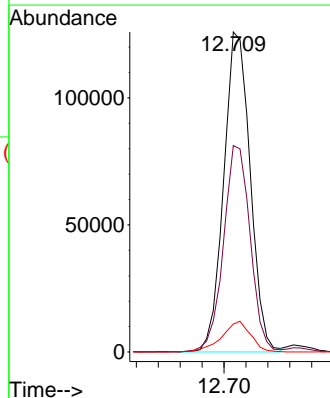
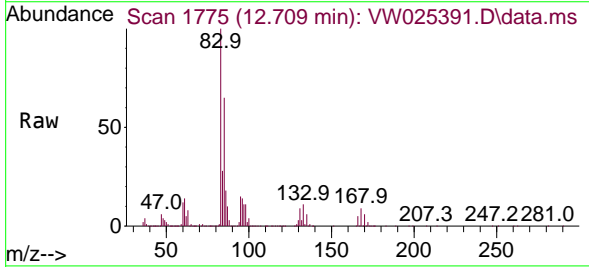


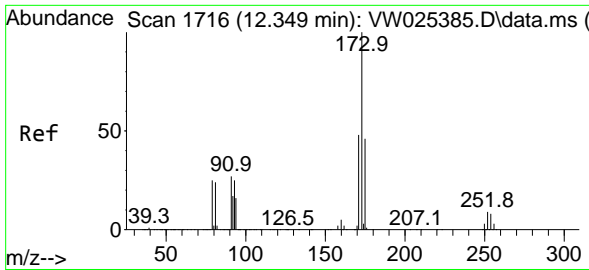
Tgt Ion:104 Resp: 775688
 Ion Ratio Lower Upper
 104 100
 78 48.1 31.1 57.9



#57
 1,1,2,2-Tetrachloroethane
 Concen: 21.421 ug/L
 RT: 12.709 min Scan# 1775
 Delta R.T. -0.006 min
 Lab File: VW025391.D
 Acq: 16 Mar 2023 11:05

Tgt Ion: 83 Resp: 211357
 Ion Ratio Lower Upper
 83 100
 85 64.5 45.4 84.2
 131 8.7 8.0 12.0



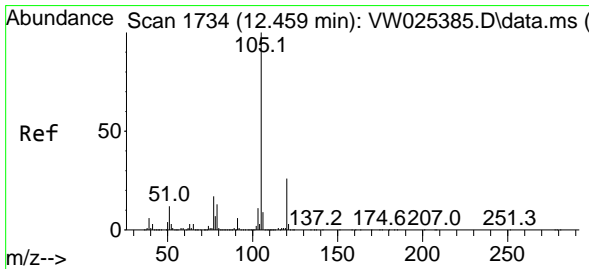
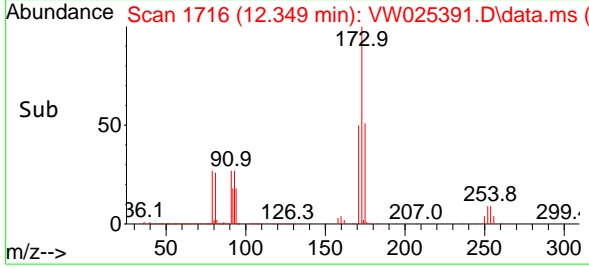
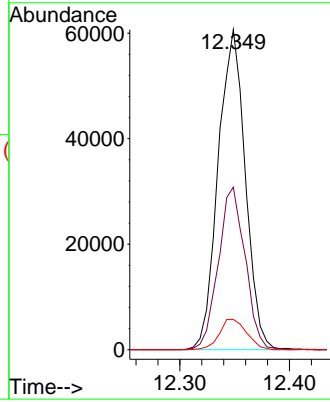
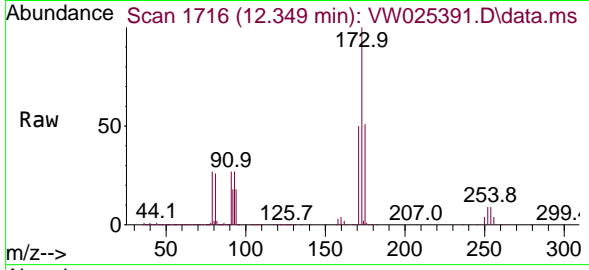


#59
 Bromoform
 Concen: 21.812 ug/L
 RT: 12.349 min Scan# 1716
 Delta R.T. 0.000 min
 Lab File: VW025391.D
 Acq: 16 Mar 2023 11:05

Instrument :
 MSVOA_W
 ClientSampleId :
 VSTD025548

Tgt Ion:173 Resp: 104199

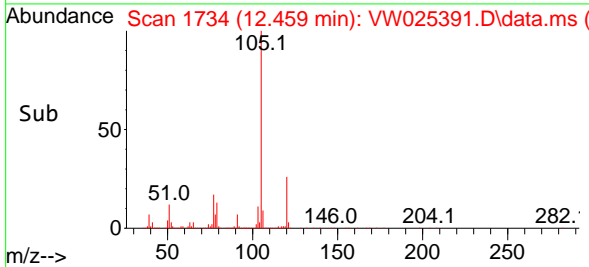
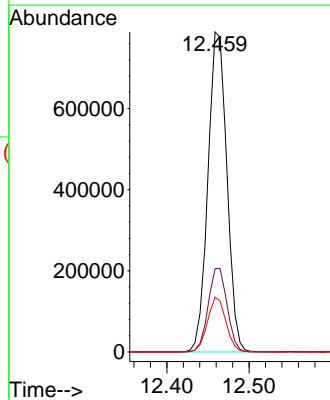
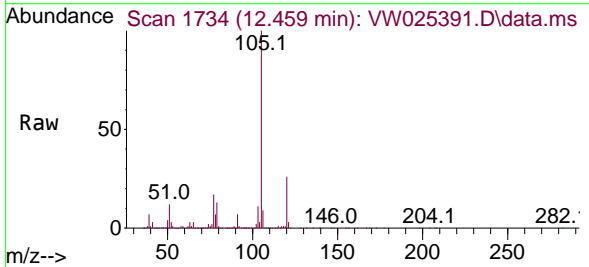
Ion	Ratio	Lower	Upper
173	100		
175	50.1	38.6	57.8
254	9.6	7.9	11.9

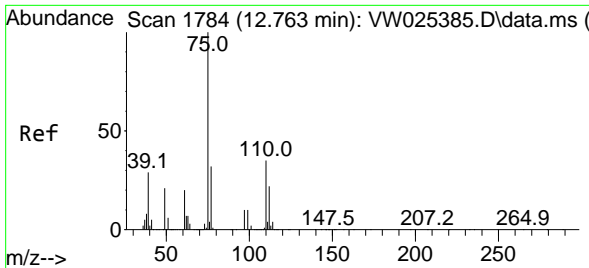


#60
 Isopropylbenzene
 Concen: 25.575 ug/L
 RT: 12.459 min Scan# 1734
 Delta R.T. 0.000 min
 Lab File: VW025391.D
 Acq: 16 Mar 2023 11:05

Tgt Ion:105 Resp: 1262382

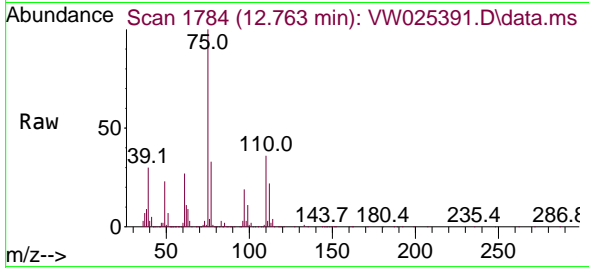
Ion	Ratio	Lower	Upper
105	100		
120	26.2	20.9	31.3
77	16.6	13.1	19.7



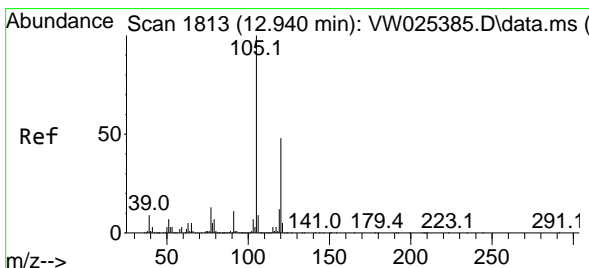
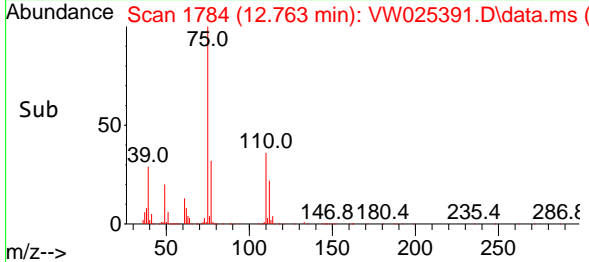
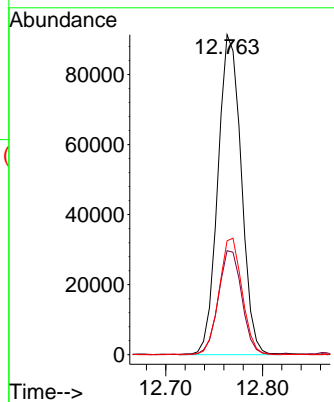


#61
 1,2,3-Trichloropropane
 Concen: 21.243 ug/L
 RT: 12.763 min Scan# 11
 Delta R.T. 0.000 min
 Lab File: VW025391.D
 Acq: 16 Mar 2023 11:05

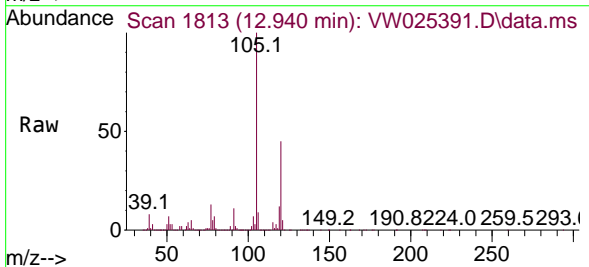
Instrument :
 MSVOA_W
 ClientSampleId :
 VSTD025548



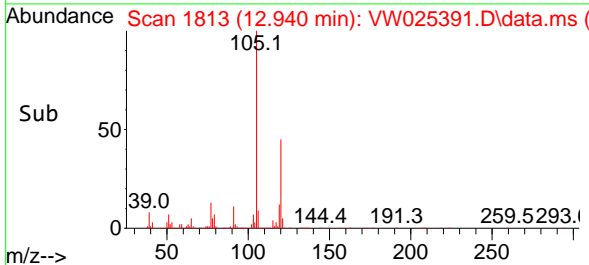
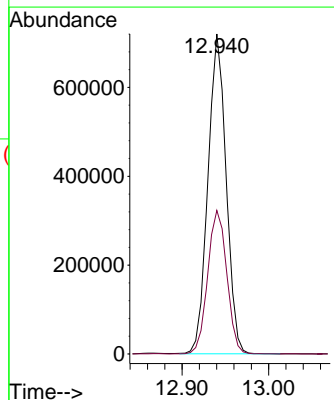
Tgt Ion: 75 Resp: 153247
 Ion Ratio Lower Upper
 75 100
 77 32.2 25.4 38.2
 110 35.9 28.9 43.3

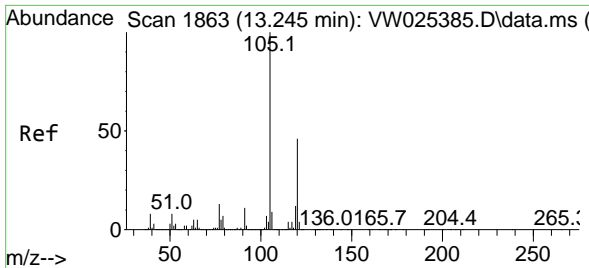


#62
 1,3,5-Trimethylbenzene
 Concen: 26.887 ug/L
 RT: 12.940 min Scan# 1813
 Delta R.T. 0.000 min
 Lab File: VW025391.D
 Acq: 16 Mar 2023 11:05



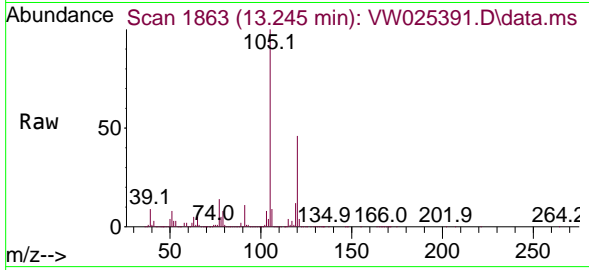
Tgt Ion: 105 Resp: 1051091
 Ion Ratio Lower Upper
 105 100
 120 47.1 39.3 58.9



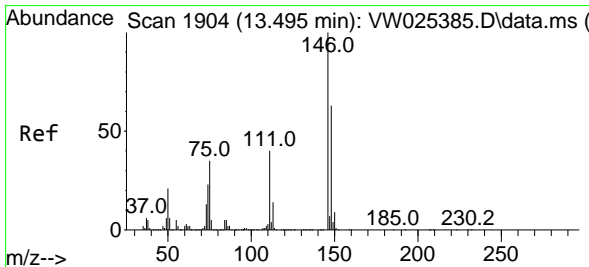
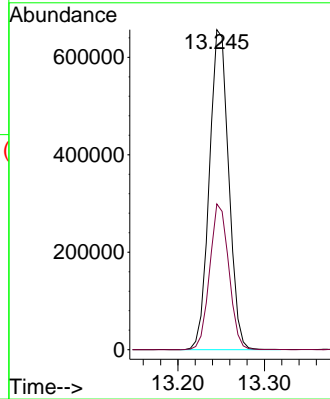
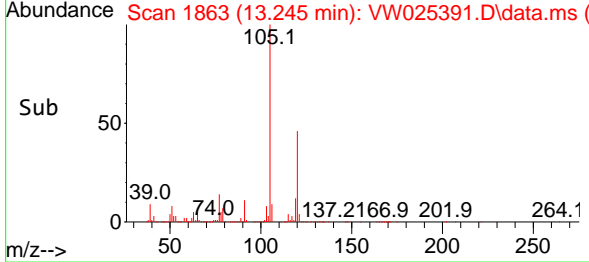


#63
 1,2,4-Trimethylbenzene
 Concen: 26.407 ug/L
 RT: 13.245 min Scan# 1863
 Delta R.T. 0.000 min
 Lab File: VW025391.D
 Acq: 16 Mar 2023 11:05

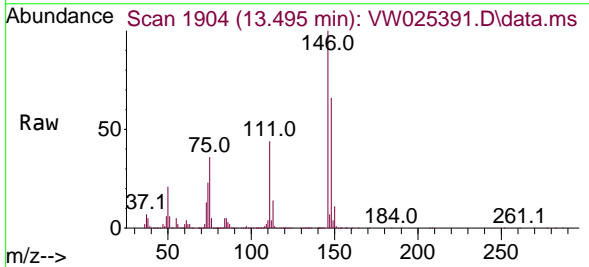
Instrument : MSVOA_W
 ClientSampleId : VSTD025548



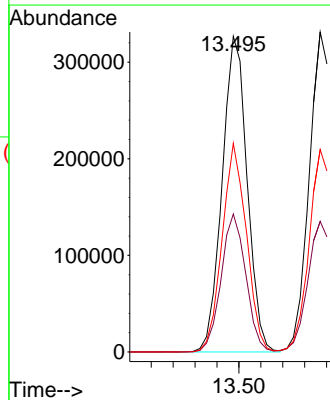
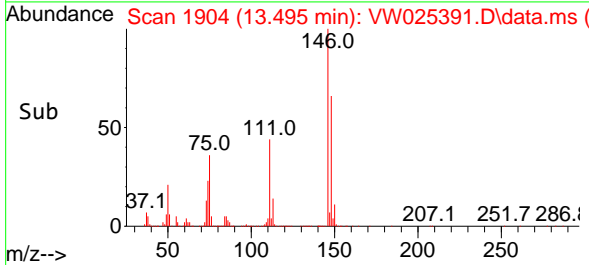
Tgt Ion:105 Resp: 1016958
 Ion Ratio Lower Upper
 105 100
 120 45.0 36.0 54.0

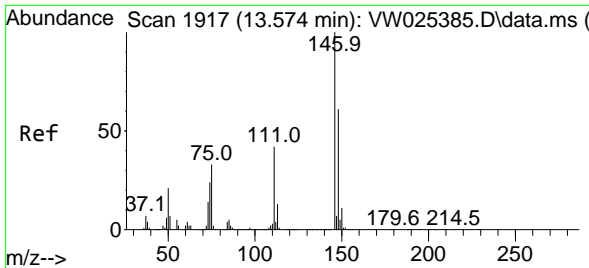


#64
 1,3-Dichlorobenzene
 Concen: 24.751 ug/L
 RT: 13.495 min Scan# 1904
 Delta R.T. 0.000 min
 Lab File: VW025391.D
 Acq: 16 Mar 2023 11:05



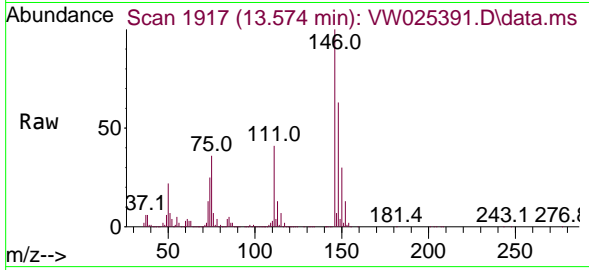
Tgt Ion:146 Resp: 517671
 Ion Ratio Lower Upper
 146 100
 111 43.7 29.7 55.1
 148 66.1 44.2 82.2



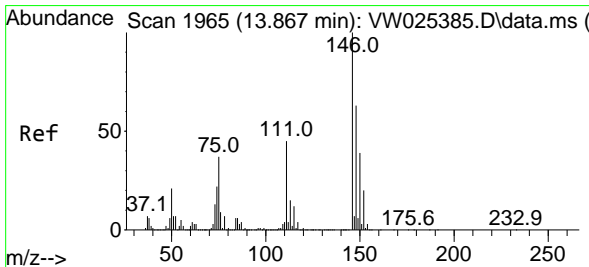
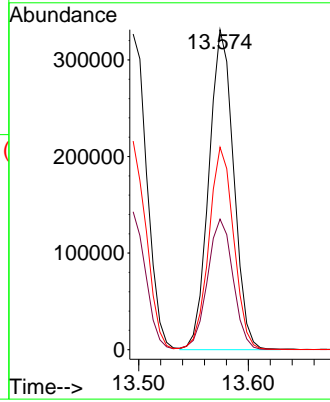
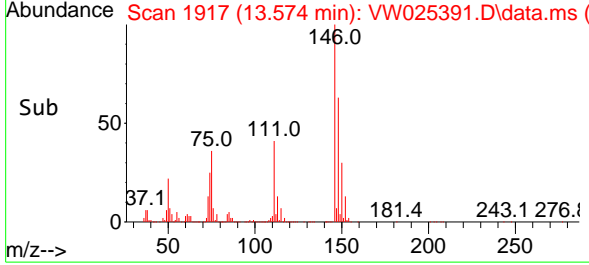


#65
 1,4-Dichlorobenzene
 Concen: 24.253 ug/L
 RT: 13.574 min Scan# 1917
 Delta R.T. 0.000 min
 Lab File: VW025391.D
 Acq: 16 Mar 2023 11:05

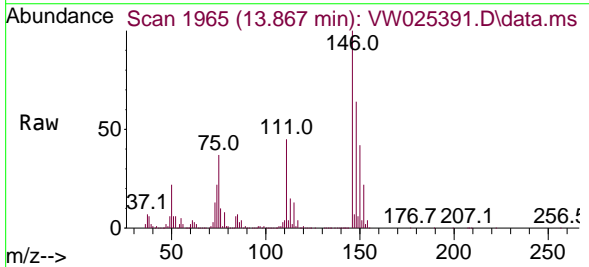
Instrument : MSVOA_W
 ClientSampleId : VSTD025548



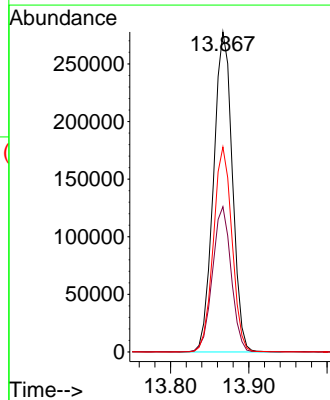
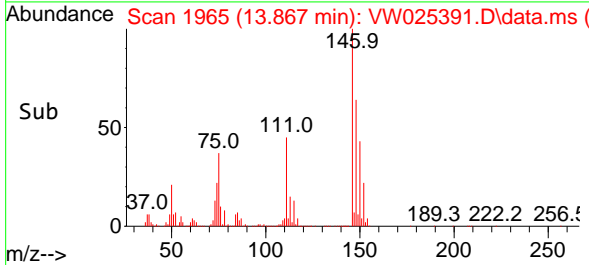
Tgt Ion:146 Resp: 520327
 Ion Ratio Lower Upper
 146 100
 111 40.8 28.2 52.4
 148 63.2 39.8 73.8

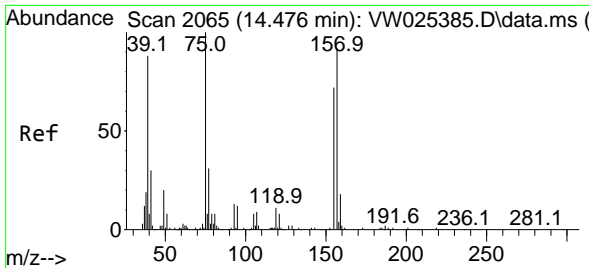


#67
 1,2-Dichlorobenzene
 Concen: 24.719 ug/L
 RT: 13.867 min Scan# 1965
 Delta R.T. 0.000 min
 Lab File: VW025391.D
 Acq: 16 Mar 2023 11:05



Tgt Ion:146 Resp: 463695
 Ion Ratio Lower Upper
 146 100
 111 45.4 36.6 54.8
 148 64.1 53.4 80.2

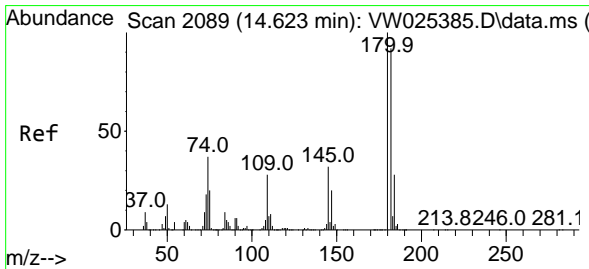
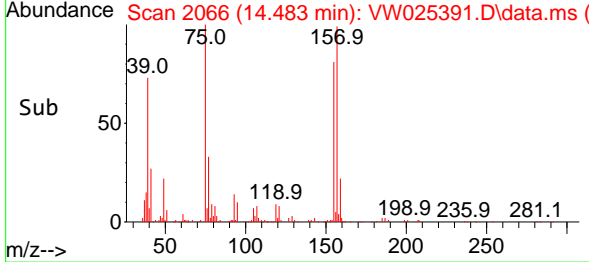
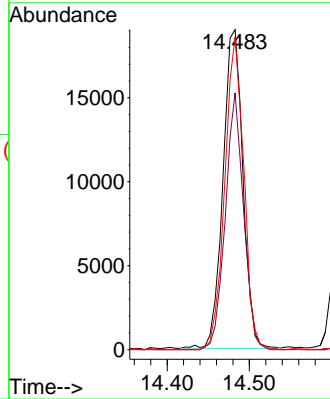
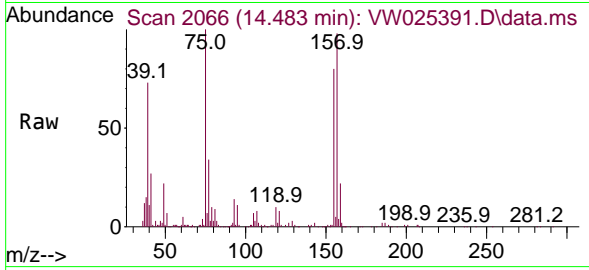




#68
 1,2-Dibromo-3-chloropropane
 Concen: 19.120 ug/L
 RT: 14.483 min Scan# 2066
 Delta R.T. 0.006 min
 Lab File: VW025391.D
 Acq: 16 Mar 2023 11:05

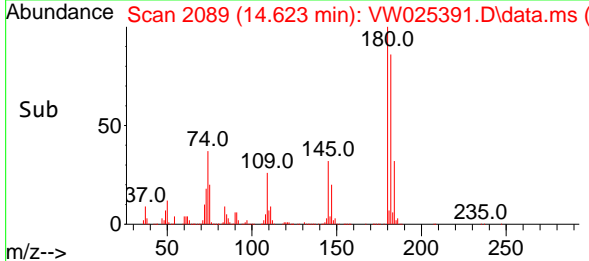
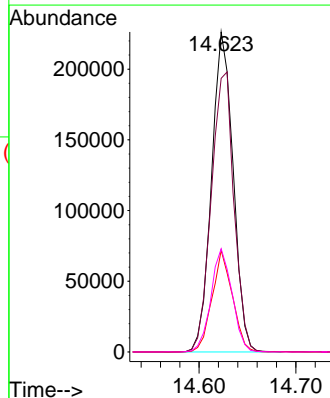
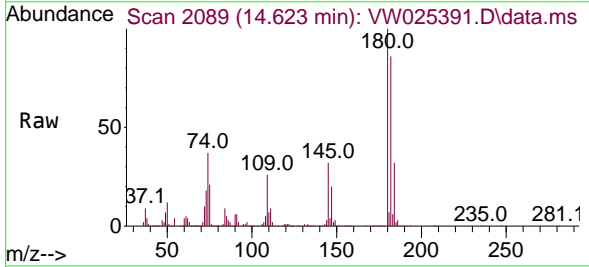
Instrument :
 MSVOA_W
 ClientSampleId :
 VSTD025548

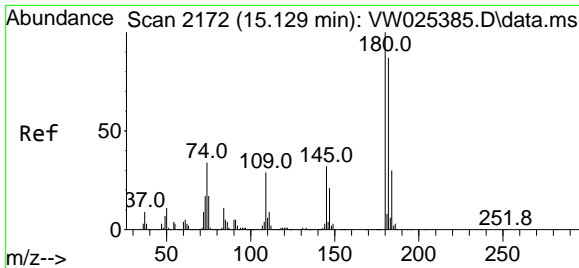
Tgt Ion	Resp	Lower	Upper
75	31933		
75	100		
155	80.2	55.4	83.0
157	97.6	75.3	112.9



#69
 1,3,5-Trichlorobenzene
 Concen: 24.659 ug/L
 RT: 14.623 min Scan# 2089
 Delta R.T. 0.000 min
 Lab File: VW025391.D
 Acq: 16 Mar 2023 11:05

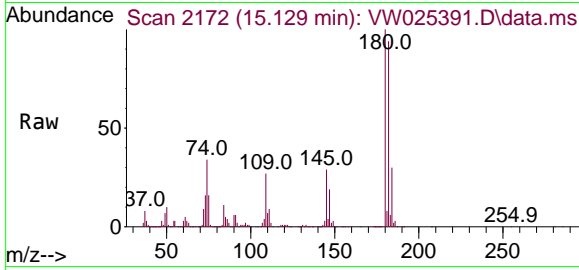
Tgt Ion	Resp	Lower	Upper
180	350601		
180	100		
182	92.2	77.1	115.7
184	29.9	24.7	37.1
145	31.7	25.7	38.5



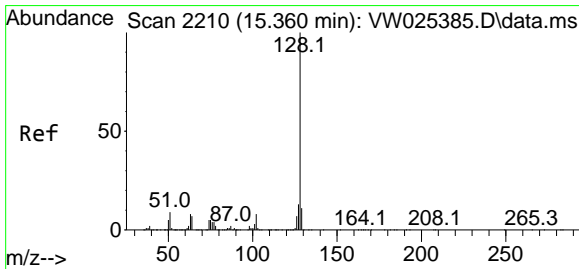
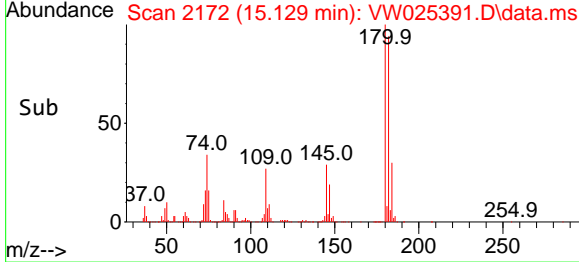
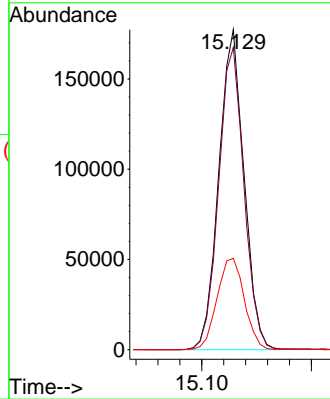


#70
 1,2,4-trichlorobenzene
 Concen: 23.977 ug/L
 RT: 15.129 min Scan# 2110
 Delta R.T. 0.000 min
 Lab File: VW025391.D
 Acq: 16 Mar 2023 11:05

Instrument :
 MSVOA_W
 ClientSampleId :
 VSTD025548

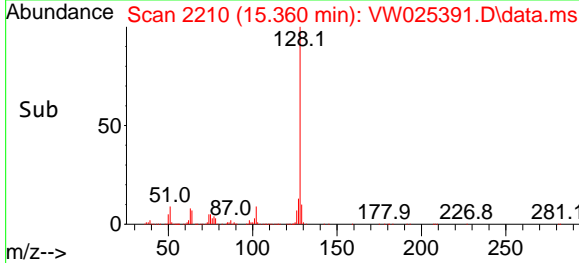
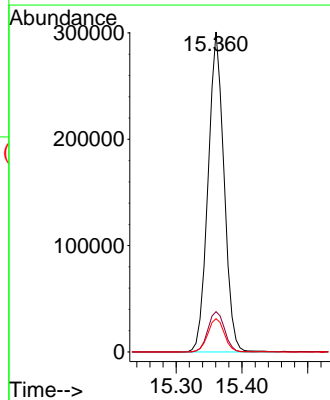
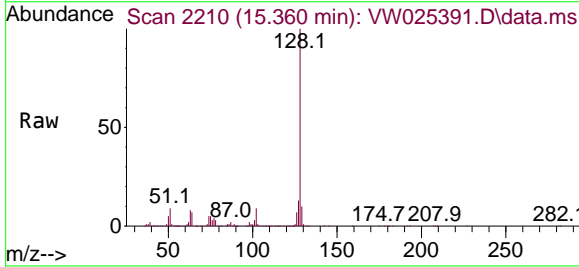


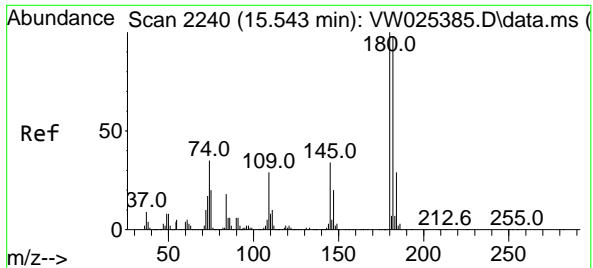
Tgt Ion:180 Resp: 282647
 Ion Ratio Lower Upper
 180 100
 182 95.1 75.5 113.3
 145 30.9 25.2 37.8



#71
 Naphthalene
 Concen: 21.798 ug/L
 RT: 15.360 min Scan# 2210
 Delta R.T. 0.000 min
 Lab File: VW025391.D
 Acq: 16 Mar 2023 11:05

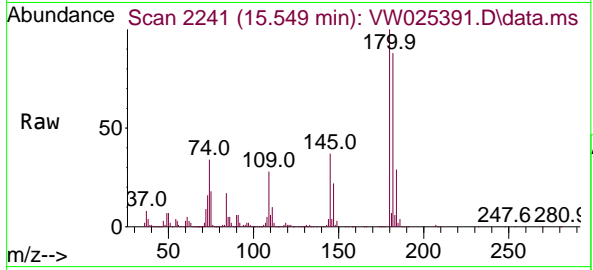
Tgt Ion:128 Resp: 507228
 Ion Ratio Lower Upper
 128 100
 127 13.2 10.6 16.0
 129 10.8 8.6 13.0





#72
 1,2,3-Trichlorobenzene
 Concen: 22.853 ug/L
 RT: 15.549 min Scan# 21
 Delta R.T. 0.006 min
 Lab File: VW025391.D
 Acq: 16 Mar 2023 11:05

Instrument :
 MSVOA_W
 ClientSampleId :
 VSTD025548



Tgt Ion:180 Resp: 241966

Ion	Ratio	Lower	Upper
180	100		
182	94.7	76.6	114.8
145	35.1	27.7	41.5

