

Data Path : Z:\voasrv\HPCHEM1\MSVOA_W\Data\VW032024\
 Data File : VW028218.D
 Acq On : 20 Mar 2024 15:06
 Operator : SY/MD
 Sample : VIBLK414
 Misc : 5.00g/10mL/MSVOA_W/SOIL
 ALS Vial : 1 Sample Multiplier: 1

Instrument :
 MSVOA_W
 ClientSampleId :
 VIBLK414

Integration Parameters: LSCINT.P

Integrator: RTE
 Smoothing : OFF
 Sampling : 1
 Start Thrs : 0.2
 Stop Thrs : 0

Filtering: 5
 Min Area: 0 % of largest Peak
 Max Peaks: 100
 Peak Location: TOP

If leading or trailing edge < 100 prefer < Baseline drop else tangent >
 Peak separation: 5

Method : Z:\voasrv\HPCHEM1\MSVOA_W\Method\SFAMWLM031424SMA.M
 Title : SFAM01.0

Signal : TIC: VW028218.D\data.ms

peak #	R.T. min	first scan	max scan	last scan	PK TY	peak height	corr. area	corr. % max.	% of total
1	2.363	72	78	92	rVB	44778	97363	10.82%	1.579%
2	2.619	115	120	121	rBV2	569	957	0.11%	0.016%
3	2.899	159	166	181	rBV	25356	72941	8.11%	1.183%
4	3.052	189	191	195	rVB2	1052	921	0.10%	0.015%
5	3.259	223	225	227	rBV2	674	551	0.06%	0.009%
6	3.375	243	244	246	rBV	446	344	0.04%	0.006%
7	3.899	327	330	332	rBV	269	271	0.03%	0.004%
8	4.021	338	350	367	rBV	104857	308166	34.26%	4.998%
9	4.295	394	395	398	rBV2	366	305	0.03%	0.005%
10	4.381	405	409	413	rBV2	325	518	0.06%	0.008%
11	4.417	413	415	416	rBV	307	261	0.03%	0.004%
12	4.448	418	420	422	rBV2	326	306	0.03%	0.005%
13	4.911	487	496	497	rBV2	4678	7395	0.82%	0.120%
14	5.435	579	582	586	rBV2	369	485	0.05%	0.008%
15	5.490	589	591	595	rBV2	215	286	0.03%	0.005%
16	5.637	612	615	617	rBV2	376	326	0.04%	0.005%
17	5.722	627	629	632	rBV2	258	322	0.04%	0.005%
18	5.807	640	643	646	rBV2	274	429	0.05%	0.007%
19	5.941	657	665	675	rVB4	2250	7807	0.87%	0.127%
20	6.246	714	715	720	rBV	232	288	0.03%	0.005%
21	6.460	747	750	754	rBV	394	530	0.06%	0.009%
22	6.502	754	757	759	rVV2	376	372	0.04%	0.006%
23	6.533	759	762	764	rVV	267	315	0.04%	0.005%
24	6.649	779	781	783	rBV	401	296	0.03%	0.005%
25	6.710	789	791	795	rVB	341	338	0.04%	0.005%
26	6.844	807	813	816	rBV2	254	464	0.05%	0.008%
27	6.990	834	837	838	rBV2	252	281	0.03%	0.005%
28	7.082	842	852	859	rBV2	23350	67499	7.50%	1.095%
29	7.423	907	908	912	rBV	318	324	0.04%	0.005%
30	7.453	912	913	917	rVB	482	384	0.04%	0.006%
31	7.545	923	928	929	rBV	270	348	0.04%	0.006%
32	7.648	935	945	958	rVB	157535	380004	42.25%	6.163%
33	7.777	963	966	970	rVB2	486	710	0.08%	0.012%
34	7.850	976	978	980	rVV2	305	266	0.03%	0.004%
35	7.874	980	982	984	rVV	318	273	0.03%	0.004%
36	7.965	993	997	998	rBV2	264	298	0.03%	0.005%

Data Path : Z:\voasrv\HPCHEM1\MSVOA_W\Data\VW032024\
 Data File : VW028218.D
 Acq On : 20 Mar 2024 15:06
 Operator : SY/MD
 Sample : VIBLK414
 Misc : 5.00g/10mL/MSVOA_W/SOIL
 ALS Vial : 1 Sample Multiplier: 1

Instrument :
 MSVOA_W
 ClientSampleId :
 VIBLK414

Integration Parameters: LSCINT.P

Integrator: RTE
 Smoothing : OFF
 Sampling : 1
 Start Thrs: 0.2
 Stop Thrs : 0

Filtering: 5
 Min Area: 0 % of largest Peak
 Max Peaks: 100
 Peak Location: TOP

If leading or trailing edge < 100 prefer < Baseline drop else tangent >
 Peak separation: 5

Method : Z:\voasrv\HPCHEM1\MSVOA_W\Method\SFAMWLM031424SMA.M
 Title : SFAM01.0

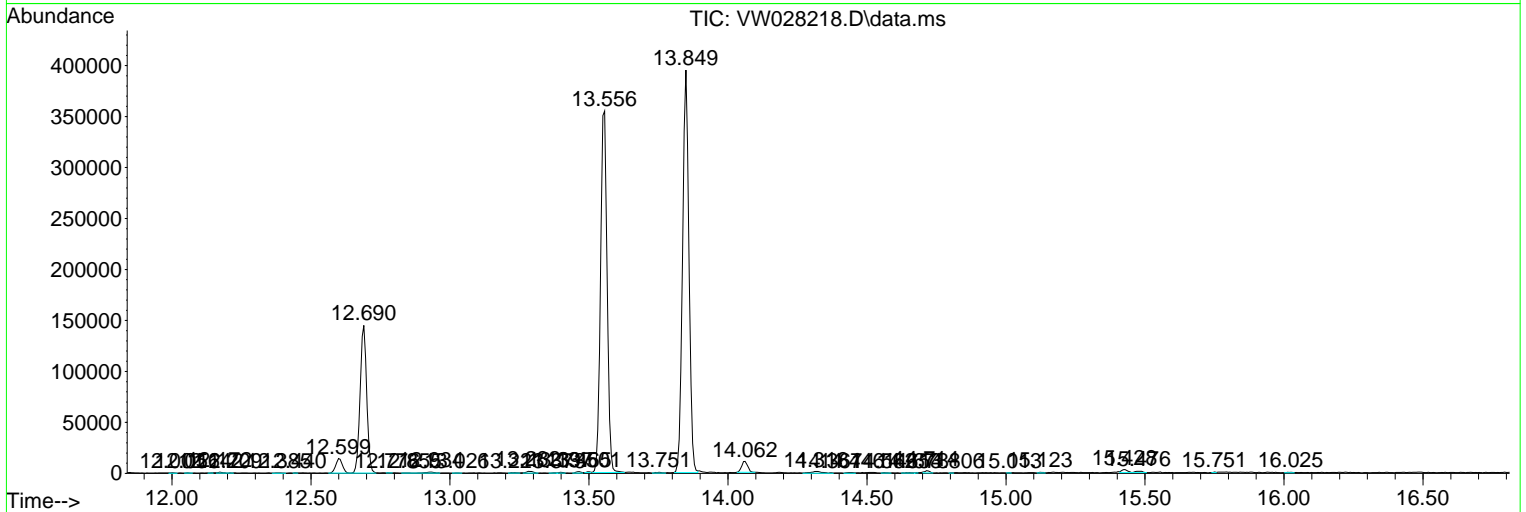
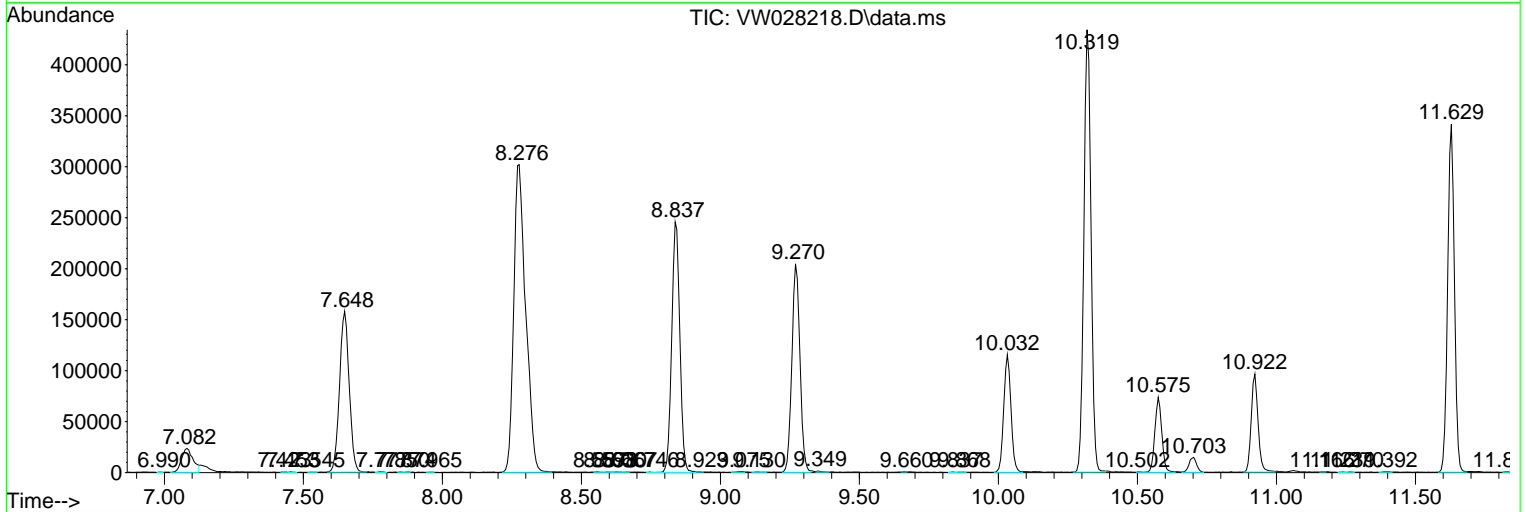
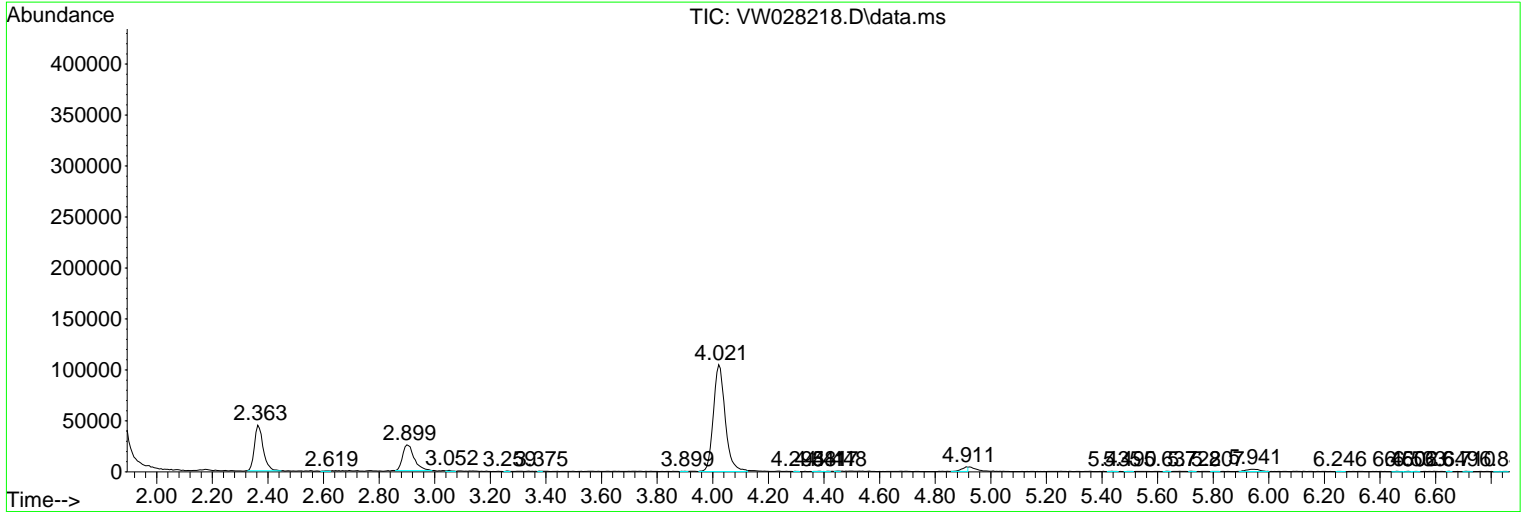
37	8.276	1038	1048	1067	rVV2	301711	899439	100.00%	14.586%
38	8.557	1092	1094	1098	rVB2	563	531	0.06%	0.009%
39	8.593	1098	1100	1103	rBV3	338	348	0.04%	0.006%
40	8.630	1103	1106	1109	rVB2	412	573	0.06%	0.009%
41	8.667	1109	1112	1113	rBV2	337	283	0.03%	0.005%
42	8.746	1123	1125	1128	rVB2	409	281	0.03%	0.005%
43	8.837	1128	1140	1152	rBV	245646	495827	55.13%	8.041%
44	8.923	1152	1154	1157	rVB2	303	318	0.04%	0.005%
45	9.075	1173	1179	1181	rBV3	672	1204	0.13%	0.020%
46	9.130	1185	1188	1194	rBV3	410	764	0.08%	0.012%
47	9.270	1203	1211	1220	rBV	204412	411892	45.79%	6.680%
48	9.349	1223	1224	1231	rVB4	1092	1142	0.13%	0.019%
49	9.660	1273	1275	1277	rBV2	499	417	0.05%	0.007%
50	9.837	1301	1304	1306	rBV	321	296	0.03%	0.005%
51	9.868	1306	1309	1312	rBV2	199	320	0.04%	0.005%
52	10.032	1328	1336	1345	rBV	115355	207825	23.11%	3.370%
53	10.319	1375	1383	1394	rVV	433881	770688	85.69%	12.498%
54	10.502	1412	1413	1416	rVB	394	373	0.04%	0.006%
55	10.575	1416	1425	1435	rBV2	73431	126326	14.04%	2.049%
56	10.703	1439	1446	1452	rVB2	14545	27425	3.05%	0.445%
57	10.922	1475	1482	1494	rBV	96051	164609	18.30%	2.669%
58	11.166	1520	1522	1524	rBV3	425	432	0.05%	0.007%
59	11.239	1531	1534	1536	rBV2	376	424	0.05%	0.007%
60	11.270	1536	1539	1541	rVV2	277	290	0.03%	0.005%
61	11.392	1555	1559	1563	rBV4	605	1087	0.12%	0.018%
62	11.629	1590	1598	1607	rBV	341287	575771	64.01%	9.337%
63	11.825	1628	1630	1632	rBV2	487	557	0.06%	0.009%
64	12.001	1657	1659	1662	rVB2	364	331	0.04%	0.005%
65	12.056	1666	1668	1671	rBV2	327	311	0.03%	0.005%
66	12.142	1680	1682	1683	rVV2	338	295	0.03%	0.005%
67	12.172	1685	1687	1692	rVB4	988	1179	0.13%	0.019%
68	12.209	1692	1693	1695	rBV	308	278	0.03%	0.005%
69	12.385	1718	1722	1726	rVB2	270	402	0.04%	0.007%
70	12.440	1730	1731	1733	rBV	393	295	0.03%	0.005%
71	12.599	1751	1757	1764	rVB	14243	23603	2.62%	0.383%
72	12.690	1764	1772	1779	rBV	144872	238908	26.56%	3.874%
73	12.776	1785	1786	1789	rBV3	418	272	0.03%	0.004%
74	12.855	1794	1799	1802	rBV	224	346	0.04%	0.006%
75	12.934	1802	1812	1817	rVB4	1017	2178	0.24%	0.035%
76	13.026	1824	1827	1830	rVB2	252	293	0.03%	0.005%

Data Path : Z:\voasrv\HPCHEM1\MSVOA_W\Data\VW032024\
 Data File : VW028218.D
 Acq On : 20 Mar 2024 15:06
 Operator : SY/MD
 Sample : VIBLK414
 Misc : 5.00g/10mL/MSVOA_W/SOIL
 ALS Vial : 1 Sample Multiplier: 1

Instrument :
 MSVOA_W
ClientSampleId :
 VIBLK414

Quant Method : Z:\voasrv\HPCHEM1\MSVOA_W\Method\SFAMWLM031424SMA.M
 Quant Title : SFAM01.0

TIC Library : C:\Database\NIST20.L
 TIC Integration Parameters: LSCINT.P



Library Search Compound Report

Data Path : Z:\voasrv\HPCHEM1\MSVOA_W\Data\VW032024\
Data File : VW028218.D
Acq On : 20 Mar 2024 15:06
Operator : SY/MD
Sample : VIBLK414
Misc : 5.00g/10mL/MSVOA_W/SOIL
ALS Vial : 1 Sample Multiplier: 1

Instrument :
MSVOA_W
ClientSampleId :
VIBLK414

Quant Method : Z:\voasrv\HPCHEM1\MSVOA_W\Method\SFAMWLM031424SMA.M
Quant Title : SFAM01.0

TIC Library : C:\Database\NIST20.L
TIC Integration Parameters: LSCINT.P

No Library Search Compounds Detected

Data Path : Z:\voasrv\HPCHEM1\MSVOA_W\Data\VW032024\
Data File : VW028218.D
Acq On : 20 Mar 2024 15:06
Operator : SY/MD
Sample : VIBLK414
Misc : 5.00g/10mL/MSVOA_W/SOIL
ALS Vial : 1 Sample Multiplier: 1

Instrument :
MSVOA_W
ClientSampleId :
VIBLK414

Quant Method : Z:\voasrv\HPCHEM1\MSVOA_W\Method\SFAMWLM031424SMA.M
Quant Title : SFAM01.0

TIC Library : C:\Database\NIST0.L
TIC Integration Parameters: LSCINT.P

TIC Top Hit name	RT	EstConc	Units	Response	--Internal Standard--			
					#	RT	Resp	Conc
