

Data Path : Z:\voasrv\HPCHEM1\MSVOA_W\Data\VW032123\
 Data File : VW025463.D
 Acq On : 21 Mar 2023 13:04
 Operator : SY/MD
 Sample : VIBLK424
 Misc : 5.00g/10mL/MSVOA_W/SOIL
 ALS Vial : 1 Sample Multiplier: 1

Instrument :
 MSVOA_W
 ClientSampleId :
 VIBLK424

Integration Parameters: LSCINT.P

Integrator: RTE
 Smoothing : OFF Filtering: 5
 Sampling : 1 Min Area: 0 % of largest Peak
 Start Thrs: 0.2 Max Peaks: 100
 Stop Thrs : 0 Peak Location: TOP

If leading or trailing edge < 100 prefer < Baseline drop else tangent >
 Peak separation: 5

Method : Z:\voasrv\HPCHEM1\MSVOA_W\Method\SFAMWLM030623SMA.M
 Title : SFAM01.0

Signal : TIC: VW025463.D\data.ms

peak #	R.T. min	first scan	max scan	last scan	PK TY	peak height	corr. area	corr. % max.	% of total
1	2.362	72	78	93	rVB	153913	367505	11.79%	1.674%
2	2.893	159	165	187	rVB	120896	353523	11.34%	1.610%
3	3.521	265	268	270	rVB4	2882	3061	0.10%	0.014%
4	3.819	315	317	320	rVB4	2371	1973	0.06%	0.009%
5	3.899	326	330	332	rBV5	1537	2029	0.07%	0.009%
6	4.021	339	350	375	rBV2	325546	1051134	33.72%	4.787%
7	4.392	403	411	413	rBV5	4306	8942	0.29%	0.041%
8	4.539	433	435	442	rVB8	2275	4525	0.15%	0.021%
9	4.642	449	452	455	rBV5	1807	2000	0.06%	0.009%
10	4.764	469	472	476	rBV6	1765	2418	0.08%	0.011%
11	4.917	487	497	513	rVB2	28660	101264	3.25%	0.461%
12	5.100	524	527	529	rBV3	2192	2606	0.08%	0.012%
13	5.161	535	537	542	rVB6	2678	3441	0.11%	0.016%
14	5.301	556	560	561	rBV4	1704	2217	0.07%	0.010%
15	5.411	573	578	580	rBV6	2270	3977	0.13%	0.018%
16	5.593	607	608	611	rBV4	2429	2343	0.08%	0.011%
17	5.624	611	613	617	rBV5	1562	2093	0.07%	0.010%
18	5.947	655	666	673	rVV5	9355	27155	0.87%	0.124%
19	6.069	682	686	688	rBV4	2202	3094	0.10%	0.014%
20	6.112	690	693	697	rVB6	1965	1865	0.06%	0.008%
21	6.221	708	711	714	rVB5	1788	2152	0.07%	0.010%
22	6.258	714	717	718	rBV3	1511	1746	0.06%	0.008%
23	6.740	792	796	801	rVB8	2856	4606	0.15%	0.021%
24	6.788	801	804	807	rBV5	1813	2084	0.07%	0.009%
25	6.849	810	814	815	rBV3	2000	2275	0.07%	0.010%
26	6.874	815	818	820	rVB4	2174	2409	0.08%	0.011%
27	7.075	842	851	856	rBV	84105	227454	7.30%	1.036%
28	7.514	921	923	929	rVV7	2081	4200	0.13%	0.019%
29	7.648	933	945	956	rVV	502378	1230698	39.48%	5.605%
30	7.959	994	996	998	rVV3	1981	1833	0.06%	0.008%
31	8.178	1028	1032	1035	rVB6	1927	2294	0.07%	0.010%
32	8.276	1035	1048	1065	rBV2	1061000	3117304	100.00%	14.197%
33	8.599	1100	1101	1105	rVB4	2082	2194	0.07%	0.010%
34	8.843	1132	1141	1154	rVV	1011115	1949773	62.55%	8.879%
35	8.928	1154	1155	1160	rVB4	2633	2466	0.08%	0.011%
36	9.014	1166	1169	1174	rBV7	1940	2826	0.09%	0.013%

Data Path : Z:\voasrv\HPCHEM1\MSVOA_W\Data\VW032123\
 Data File : VW025463.D
 Acq On : 21 Mar 2023 13:04
 Operator : SY/MD
 Sample : VIBLK424
 Misc : 5.00g/10mL/MSVOA_W/SOIL
 ALS Vial : 1 Sample Multiplier: 1

Instrument :
 MSVOA_W
 ClientSampleId :
 VIBLK424

Integration Parameters: LSCINT.P

Integrator: RTE
 Smoothing : OFF
 Sampling : 1
 Start Thrs: 0.2
 Stop Thrs : 0

Filtering: 5
 Min Area: 0 % of largest Peak
 Max Peaks: 100
 Peak Location: TOP

If leading or trailing edge < 100 prefer < Baseline drop else tangent >
 Peak separation: 5

Method : Z:\voasrv\HPCHEM1\MSVOA_W\Method\SFAMWLM030623SMA.M
 Title : SFAM01.0

37	9.068	1175	1178	1179	rBV3	3501	3554	0.11%	0.016%
38	9.270	1201	1211	1223	rBV	698116	1444611	46.34%	6.579%
39	9.501	1246	1249	1252	rVB5	2377	2042	0.07%	0.009%
40	9.593	1261	1264	1266	rBV4	1429	1836	0.06%	0.008%
41	9.672	1275	1277	1282	rVB6	3337	4383	0.14%	0.020%
42	9.776	1292	1294	1297	rVB4	2681	3201	0.10%	0.015%
43	9.837	1300	1304	1307	rVB6	1982	2029	0.07%	0.009%
44	10.032	1328	1336	1348	rVV	362630	680466	21.83%	3.099%
45	10.208	1358	1365	1374	rVB8	4677	13006	0.42%	0.059%
46	10.324	1374	1384	1392	rBV	1438219	2546040	81.67%	11.595%
47	10.501	1411	1413	1419	rVB7	2124	3129	0.10%	0.014%
48	10.574	1419	1425	1433	rBV	236365	407757	13.08%	1.857%
49	10.702	1438	1446	1452	rBV	66806	126274	4.05%	0.575%
50	10.788	1458	1460	1463	rVB3	1914	2159	0.07%	0.010%
51	10.855	1466	1471	1472	rBV5	3519	5260	0.17%	0.024%
52	10.922	1476	1482	1495	rBV	295230	506728	16.26%	2.308%
53	11.062	1500	1505	1512	rVB	28692	47199	1.51%	0.215%
54	11.288	1540	1542	1545	rBV4	1835	2096	0.07%	0.010%
55	11.355	1550	1553	1556	rVB4	1804	2892	0.09%	0.013%
56	11.434	1560	1566	1574	rVB	35700	64056	2.05%	0.292%
57	11.629	1589	1598	1610	rBV	1342404	2248537	72.13%	10.240%
58	11.733	1611	1615	1619	rVB6	5436	8604	0.28%	0.039%
59	11.842	1628	1633	1638	rVV8	3878	8253	0.26%	0.038%
60	11.970	1651	1654	1656	rVB4	2291	2585	0.08%	0.012%
61	12.013	1656	1661	1663	rBV6	1303	1867	0.06%	0.009%
62	12.165	1681	1686	1696	rVB8	5884	15488	0.50%	0.071%
63	12.245	1696	1699	1704	rVB7	1885	2779	0.09%	0.013%
64	12.336	1710	1714	1715	rBV4	2571	2942	0.09%	0.013%
65	12.354	1715	1717	1720	rVV4	2302	2442	0.08%	0.011%
66	12.464	1727	1735	1740	rBV6	8513	17164	0.55%	0.078%
67	12.604	1751	1758	1765	rBV2	63424	114244	3.66%	0.520%
68	12.690	1765	1772	1779	rVV	482802	794295	25.48%	3.617%
69	12.751	1780	1782	1793	rVB8	7642	16713	0.54%	0.076%
70	12.842	1793	1797	1801	rBV7	2370	3737	0.12%	0.017%
71	12.934	1805	1812	1818	rBV5	12209	25468	0.82%	0.116%
72	13.110	1839	1841	1844	rBV4	1608	1859	0.06%	0.008%
73	13.251	1857	1864	1866	rVV2	7548	13000	0.42%	0.059%
74	13.293	1866	1871	1876	rVB4	7965	12698	0.41%	0.058%
75	13.342	1876	1879	1882	rVB5	1898	2594	0.08%	0.012%
76	13.366	1882	1883	1886	rBV3	1813	2221	0.07%	0.010%

Data Path : Z:\voasrv\HPCHEM1\MSVOA_W\Data\VW032123\
 Data File : VW025463.D
 Acq On : 21 Mar 2023 13:04
 Operator : SY/MD
 Sample : VIBLK424
 Misc : 5.00g/10mL/MSVOA_W/SOIL
 ALS Vial : 1 Sample Multiplier: 1

Instrument :
 MSVOA_W
 ClientSampleId :
 VIBLK424

Integration Parameters: LSCINT.P

Integrator: RTE
 Smoothing : OFF Filtering: 5
 Sampling : 1 Min Area: 0 % of largest Peak
 Start Thrs: 0.2 Max Peaks: 100
 Stop Thrs : 0 Peak Location: TOP

If leading or trailing edge < 100 prefer < Baseline drop else tangent >
 Peak separation: 5

Method : Z:\voasrv\HPCHEM1\MSVOA_W\Method\SFAMWLM030623SMA.M
 Title : SFAM01.0

77	13.494	1900	1904	1907	rBV5	7444	12067	0.39%	0.055%
78	13.555	1907	1914	1926	rVB	1286369	2113845	67.81%	9.627%
79	13.751	1942	1946	1950	rBV7	2837	5041	0.16%	0.023%
80	13.787	1950	1952	1955	rBV3	1560	2160	0.07%	0.010%
81	13.848	1955	1962	1970	rBV	1159485	1921408	61.64%	8.750%
82	14.007	1985	1988	1989	rBV3	2217	2156	0.07%	0.010%
83	14.025	1989	1991	1992	rVV2	2787	2412	0.08%	0.011%
84	14.061	1992	1997	2011	rVB	30631	57929	1.86%	0.264%
85	14.189	2014	2018	2020	rBV5	2954	3887	0.12%	0.018%
86	14.324	2031	2040	2044	rBV5	7768	16338	0.52%	0.074%
87	14.482	2060	2066	2068	rBV7	3308	5679	0.18%	0.026%
88	14.622	2084	2089	2096	rVB5	10813	19221	0.62%	0.088%
89	14.714	2101	2104	2108	rVB6	5146	7818	0.25%	0.036%
90	14.750	2108	2110	2112	rBV3	1755	2228	0.07%	0.010%
91	15.055	2157	2160	2163	rBV5	1477	2052	0.07%	0.009%
92	15.128	2166	2172	2178	rVV3	10230	18250	0.59%	0.083%
93	15.226	2184	2188	2190	rBV5	2820	3030	0.10%	0.014%
94	15.360	2205	2210	2215	rVV2	12803	25344	0.81%	0.115%
95	15.427	2217	2221	2226	rVV	14679	25706	0.82%	0.117%
96	15.482	2226	2230	2232	rVV2	6638	9826	0.32%	0.045%
97	15.549	2236	2241	2248	rVB6	12743	23306	0.75%	0.106%
98	15.756	2271	2275	2277	rBV5	2118	3235	0.10%	0.015%
99	15.829	2284	2287	2288	rBV3	2185	1997	0.06%	0.009%
100	16.585	2408	2411	2413	rBV3	2656	3552	0.11%	0.016%

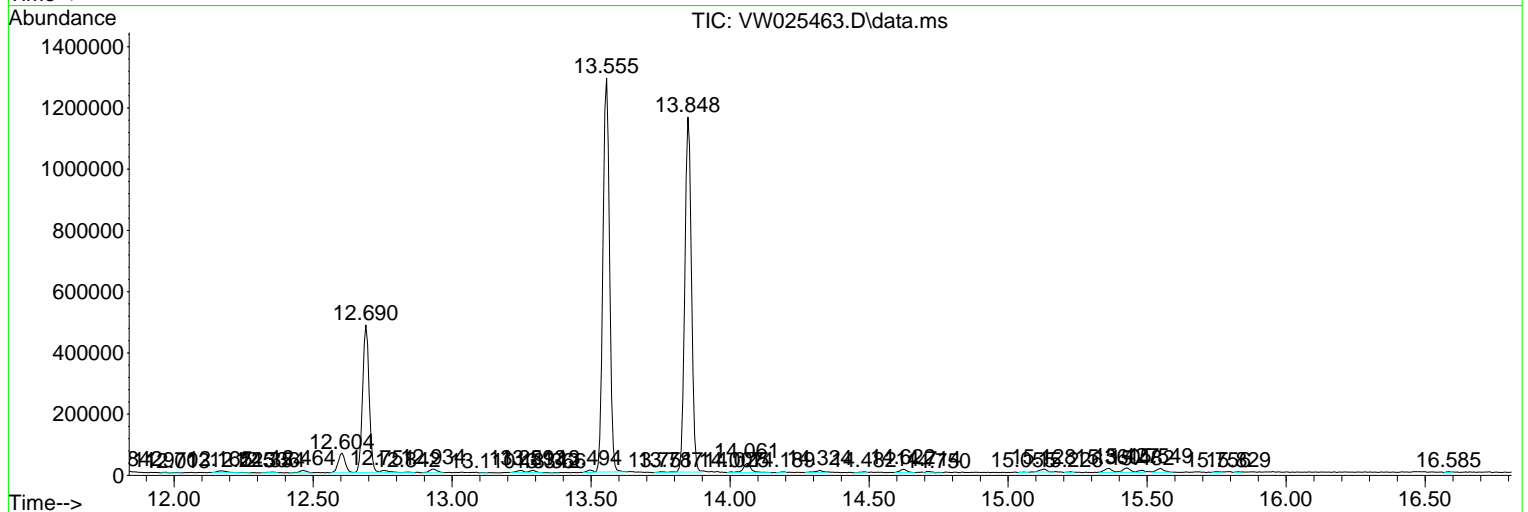
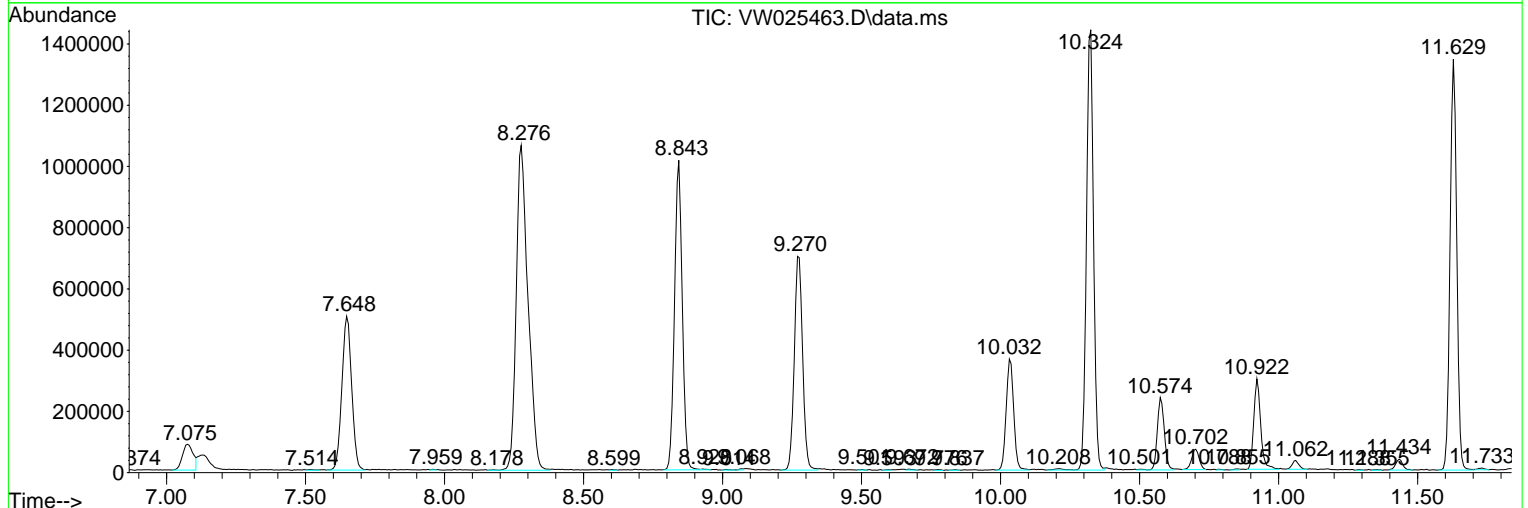
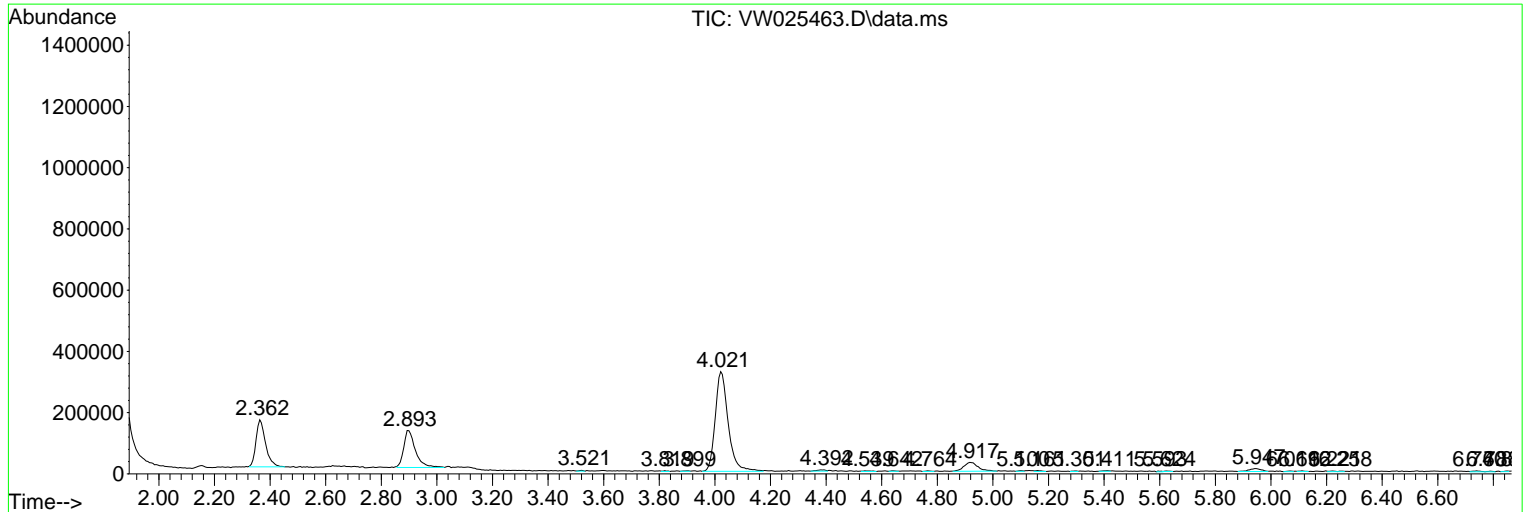
Sum of corrected areas: 21958174

Data Path : Z:\voasrv\HPCHEM1\MSVOA_W\Data\VW032123\
 Data File : VW025463.D
 Acq On : 21 Mar 2023 13:04
 Operator : SY/MD
 Sample : VIBLK424
 Misc : 5.00g/10mL/MSVOA_W/SOIL
 ALS Vial : 1 Sample Multiplier: 1

Instrument :
 MSVOA_W
ClientSampleId :
 VIBLK424

Quant Method : Z:\voasrv\HPCHEM1\MSVOA_W\Method\SFAMWLM030623SMA.M
 Quant Title : SFAM01.0

TIC Library : C:\Database\NIST20.L
 TIC Integration Parameters: LSCINT.P



Library Search Compound Report

Data Path : Z:\voasrv\HPCHEM1\MSVOA_W\Data\VW032123\
Data File : VW025463.D
Acq On : 21 Mar 2023 13:04
Operator : SY/MD
Sample : VIBLK424
Misc : 5.00g/10mL/MSVOA_W/SOIL
ALS Vial : 1 Sample Multiplier: 1

Instrument :
MSVOA_W
ClientSampleId :
VIBLK424

Quant Method : Z:\voasrv\HPCHEM1\MSVOA_W\Method\SFAMWLM030623SMA.M
Quant Title : SFAM01.0

TIC Library : C:\Database\NIST20.L
TIC Integration Parameters: LSCINT.P

No Library Search Compounds Detected

Data Path : Z:\voasrv\HPCHEM1\MSVOA_W\Data\VW032123\
Data File : VW025463.D
Acq On : 21 Mar 2023 13:04
Operator : SY/MD
Sample : VIBLK424
Misc : 5.00g/10mL/MSVOA_W/SOIL
ALS Vial : 1 Sample Multiplier: 1

Instrument :
MSVOA_W
ClientSampleId :
VIBLK424

Quant Method : Z:\voasrv\HPCHEM1\MSVOA_W\Method\SFAMWLM030623SMA.M
Quant Title : SFAM01.0

TIC Library : C:\Database\NIST0.L
TIC Integration Parameters: LSCINT.P

TIC Top Hit name	RT	EstConc	Units	Response	--Internal Standard--			
					#	RT	Resp	Conc
