

Data Path : Z:\VOASRV\HPCHEM1\MSVOA W\DATA\VW032319\  
 Data File : VW009387.D  
 Acq On : 23 Mar 2019 13:44  
 Operator : SY/VA  
 Sample : K2048-20  
 Misc : 6.17G/10ML/MSVOA W/SOIL  
 ALS Vial : 1 Sample Multiplier: 1

Instrument :  
 MSVOA\_W  
 ClientSampled :  
 BF0G2

Integration Parameters: LSCINT.P

Integrator: RTE  
 Smoothing : OFF  
 Sampling : 1  
 Start Thrs: 0.2  
 Stop Thrs : 0

Filtering: 5  
 Min Area: 0 % of largest Peak  
 Max Peaks: 100  
 Peak Location: TOP

If leading or trailing edge < 100 prefer < Baseline drop else tangent >  
 Peak separation: 5

Method : Z:\VOASRV\HPCHEM1\MSVOA\_W\METHOD\SOM2WLM031419S.M  
 Title : VOC Analysis

Signal : TIC

peak #	R.T. min	first scan	max scan	last scan	PK TY	peak height	corr. area	corr. % max.	% of total
1	2.361	69	75	87	rBV	66682	155377	11.46%	1.456%
2	3.800	309	311	313	rBV	1254	1148	0.08%	0.011%
3	4.013	336	346	360	rBV	127789	415943	30.69%	3.898%
4	4.251	383	385	386	rBV	1909	1281	0.09%	0.012%
5	4.330	395	398	399	rBV	1978	1893	0.14%	0.018%
6	4.501	425	426	428	rBV2	1643	1362	0.10%	0.013%
7	4.684	454	456	459	rVB2	2758	2564	0.19%	0.024%
8	5.159	533	534	537	rVB	2087	1561	0.12%	0.015%
9	5.239	544	547	548	rBV2	1686	1972	0.15%	0.018%
10	5.257	548	550	552	rVB	2340	2145	0.16%	0.020%
11	5.281	552	554	556	rBV	1563	1850	0.14%	0.017%
12	5.318	558	560	562	rVV	1494	1336	0.10%	0.013%
13	5.361	565	567	568	rBV	1802	1215	0.09%	0.011%
14	5.415	572	576	577	rBV2	1822	1585	0.12%	0.015%
15	5.464	581	584	586	rBV	1706	2162	0.16%	0.020%
16	5.543	596	597	599	rBV	1430	1061	0.08%	0.010%
17	5.568	599	601	602	rVB2	1589	1068	0.08%	0.010%
18	5.635	611	612	615	rBV	1882	1779	0.13%	0.017%
19	5.842	645	646	649	rVB	2429	1982	0.15%	0.019%
20	5.867	649	650	653	rBV	1935	1930	0.14%	0.018%
21	6.031	676	677	681	rVB	2351	1585	0.12%	0.015%
22	6.147	694	696	697	rVB	2038	1311	0.10%	0.012%
23	6.159	697	698	700	rVV	1948	1701	0.13%	0.016%
24	6.220	707	708	711	rVB	2673	1799	0.13%	0.017%
25	6.281	716	718	720	rBV	1491	1179	0.09%	0.011%
26	6.379	730	734	735	rBV	1531	1393	0.10%	0.013%
27	6.507	753	755	757	rVB3	1417	1161	0.09%	0.011%
28	6.604	768	771	773	rBV	2332	2413	0.18%	0.023%
29	6.684	783	784	787	rBV2	977	1050	0.08%	0.010%
30	6.757	794	796	798	rBV2	1271	1278	0.09%	0.012%
31	6.775	798	799	801	rVV	2230	1253	0.09%	0.012%
32	6.793	801	802	805	rVB	1657	1225	0.09%	0.011%
33	6.854	809	812	813	rBV2	1192	1179	0.09%	0.011%
34	7.074	837	848	857	rBV	62793	181437	13.39%	1.701%

Data Path : Z:\VOASRV\HPCHEM1\MSVOA W\DATA\VW032319\  
 Data File : VW009387.D  
 Acq On : 23 Mar 2019 13:44  
 Operator : SY/VA  
 Sample : K2048-20  
 Misc : 6.17G/10ML/MSVOA W/SOIL  
 ALS Vial : 1 Sample Multiplier: 1

Instrument :  
 MSVOA\_W  
 ClientSampleId :  
 BF0G2

## Integration Parameters: LSCINT.P

Integrator: RTE  
 Smoothing : OFF  
 Sampling : 1  
 Start Thrs: 0.2  
 Stop Thrs : 0

Filtering: 5  
 Min Area: 0 % of largest Peak  
 Max Peaks: 100  
 Peak Location: TOP

If leading or trailing edge < 100 prefer < Baseline drop else tangent >  
 Peak separation: 5

Method : Z:\VOASRV\HPCHEM1\MSVOA\_W\METHOD\SOM2WLM031419S.M  
 Title : VOC Analysis

35	7.220	871	872	874	rVB	2067	1095	0.08%	0.010%
36	7.238	874	875	878	rBV2	1931	1705	0.13%	0.016%
37	7.379	895	898	899	rVB	2826	2069	0.15%	0.019%
38	7.409	899	903	906	rBV	2155	3441	0.25%	0.032%
39	7.500	914	918	919	rBV	1452	1451	0.11%	0.014%
40	7.519	919	921	924	rVV2	1781	1855	0.14%	0.017%
41	7.549	924	926	930	rVB2	1816	1743	0.13%	0.016%
42	7.641	930	941	952	rBV	257740	618018	45.60%	5.792%
43	7.836	971	973	975	rBV	2044	1981	0.15%	0.019%
44	7.909	983	985	986	rBV2	1473	1150	0.08%	0.011%
45	8.013	999	1002	1008	rVB2	2779	4943	0.36%	0.046%
46	8.061	1008	1010	1012	rBV	2073	2369	0.17%	0.022%
47	8.098	1015	1016	1018	rBV	1248	1183	0.09%	0.011%
48	8.134	1021	1022	1025	rVB	1813	1086	0.08%	0.010%
49	8.159	1025	1026	1028	rBV	1545	1132	0.08%	0.011%
50	8.275	1035	1045	1059	rBV2	430164	1355243	100.00%	12.702%
51	8.555	1089	1091	1094	rVB2	1668	1601	0.12%	0.015%
52	8.726	1117	1119	1122	rVB2	1347	1562	0.12%	0.015%
53	8.842	1129	1138	1147	rVV	483242	942475	69.54%	8.833%
54	9.086	1172	1178	1186	rVB3	53358	108736	8.02%	1.019%
55	9.207	1194	1198	1200	rBV3	1349	1594	0.12%	0.015%
56	9.275	1200	1209	1217	rBV	322449	665165	49.08%	6.234%
57	9.512	1246	1248	1252	rVB2	2623	2455	0.18%	0.023%
58	9.549	1252	1254	1255	rBV	2195	1669	0.12%	0.016%
59	9.659	1268	1272	1276	rBV3	2542	4419	0.33%	0.041%
60	9.750	1285	1287	1289	rBV2	2334	2536	0.19%	0.024%
61	9.890	1306	1310	1311	rVV3	2483	3809	0.28%	0.036%
62	10.037	1324	1334	1344	rBV	173099	331379	24.45%	3.106%
63	10.183	1356	1358	1360	rBV	2021	1829	0.13%	0.017%
64	10.207	1360	1362	1364	rBV	2598	2071	0.15%	0.019%
65	10.244	1367	1368	1371	rVB2	2539	2125	0.16%	0.020%
66	10.323	1373	1381	1388	rBV	591991	1031889	76.14%	9.671%
67	10.573	1416	1422	1429	rVB	124539	214834	15.85%	2.014%
68	10.805	1458	1460	1464	rBV	2171	2427	0.18%	0.023%
69	10.866	1464	1470	1473	rBV5	4308	8241	0.61%	0.077%
70	10.927	1473	1480	1489	rBV	255875	434226	32.04%	4.070%
71	11.341	1546	1548	1550	rVB2	2339	1621	0.12%	0.015%

Data Path : Z:\VOASRV\HPCHEM1\MSVOA W\DATA\VW032319\  
 Data File : VW009387.D  
 Acq On : 23 Mar 2019 13:44  
 Operator : SY/VA  
 Sample : K2048-20  
 Misc : 6.17G/10ML/MSVOA W/SOIL  
 ALS Vial : 1 Sample Multiplier: 1

Instrument :  
 MSVOA\_W  
 ClientSampleId :  
 BF0G2

## Integration Parameters: LSCINT.P

Integrator: RTE  
 Smoothing : OFF  
 Sampling : 1  
 Start Thrs: 0.2  
 Stop Thrs : 0

Filtering: 5  
 Min Area: 0 % of largest Peak  
 Max Peaks: 100  
 Peak Location: TOP

If leading or trailing edge < 100 prefer < Baseline drop else tangent >  
 Peak separation: 5

Method : Z:\VOASRV\HPCHEM1\MSVOA\_W\METHOD\SOM2WLM031419S.M  
 Title : VOC Analysis

72	11.366	1550	1552	1555	rVB	1927	1689	0.12%	0.016%
73	11.463	1565	1568	1572	rBV2	2739	3379	0.25%	0.032%
74	11.634	1586	1596	1608	rBV	704045	1212820	89.49%	11.367%
75	11.774	1616	1619	1621	rBV	1518	1574	0.12%	0.015%
76	11.920	1640	1643	1644	rBV	2114	2036	0.15%	0.019%
77	11.939	1644	1646	1648	rVB2	1603	1065	0.08%	0.010%
78	12.097	1669	1672	1673	rBV	1231	1447	0.11%	0.014%
79	12.164	1679	1683	1685	rBV2	1955	2620	0.19%	0.025%
80	12.231	1692	1694	1695	rBV	2673	2103	0.16%	0.020%
81	12.609	1751	1756	1763	rVB2	22785	41690	3.08%	0.391%
82	12.695	1763	1770	1778	rBV	350773	571240	42.15%	5.354%
83	13.024	1821	1824	1826	rBV2	3027	3207	0.24%	0.030%
84	13.085	1831	1834	1838	rBV4	1557	2439	0.18%	0.023%
85	13.225	1855	1857	1858	rVB	2438	1208	0.09%	0.011%
86	13.359	1878	1879	1881	rBV	2139	1529	0.11%	0.014%
87	13.396	1881	1885	1887	rVV	2122	3025	0.22%	0.028%
88	13.475	1893	1898	1903	rBV7	11661	21563	1.59%	0.202%
89	13.560	1905	1912	1919	rVV	735167	1135327	83.77%	10.641%
90	13.652	1924	1927	1933	rVB6	5506	9332	0.69%	0.087%
91	13.853	1953	1960	1968	rBV	622144	1034754	76.35%	9.698%
92	14.079	1991	1997	2003	rBV2	11889	20846	1.54%	0.195%
93	14.414	2050	2052	2056	rBV	2639	3324	0.25%	0.031%
94	14.499	2064	2066	2067	rBV	2002	1138	0.08%	0.011%
95	14.530	2067	2071	2077	rVB4	6619	11072	0.82%	0.104%
96	14.743	2104	2106	2109	rBV	2485	2263	0.17%	0.021%
97	14.877	2127	2128	2129	rBV	2271	1132	0.08%	0.011%
98	15.304	2196	2198	2202	rVB2	2185	2296	0.17%	0.022%
99	15.341	2202	2204	2207	rBV	2674	2904	0.21%	0.027%
100	15.859	2288	2289	2292	rBV	2426	2213	0.16%	0.021%

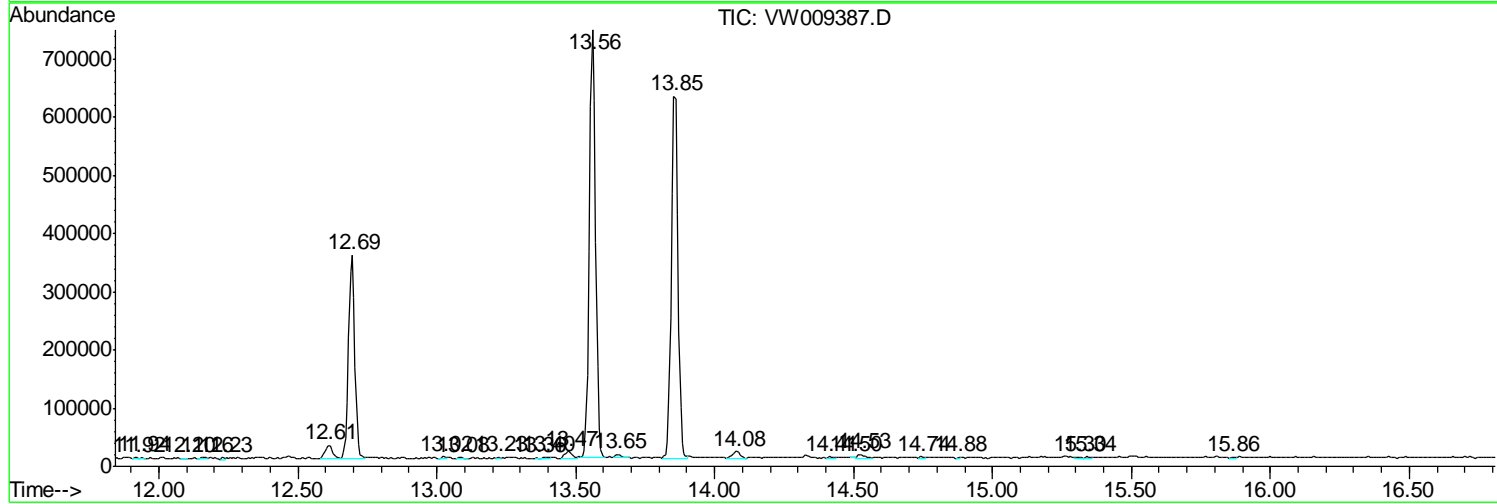
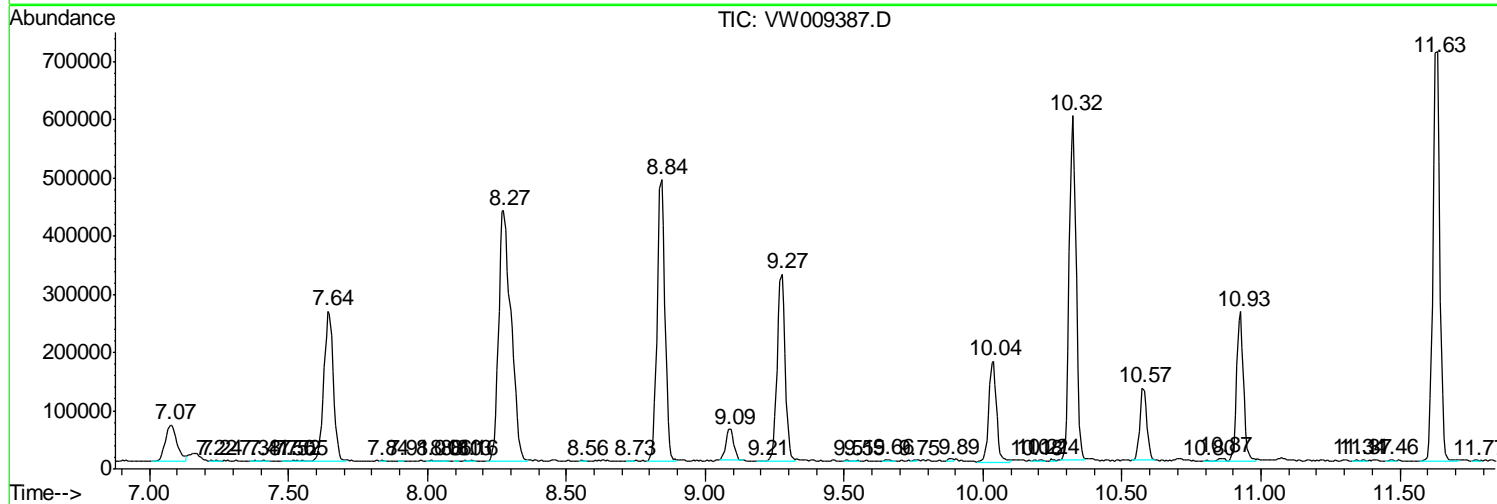
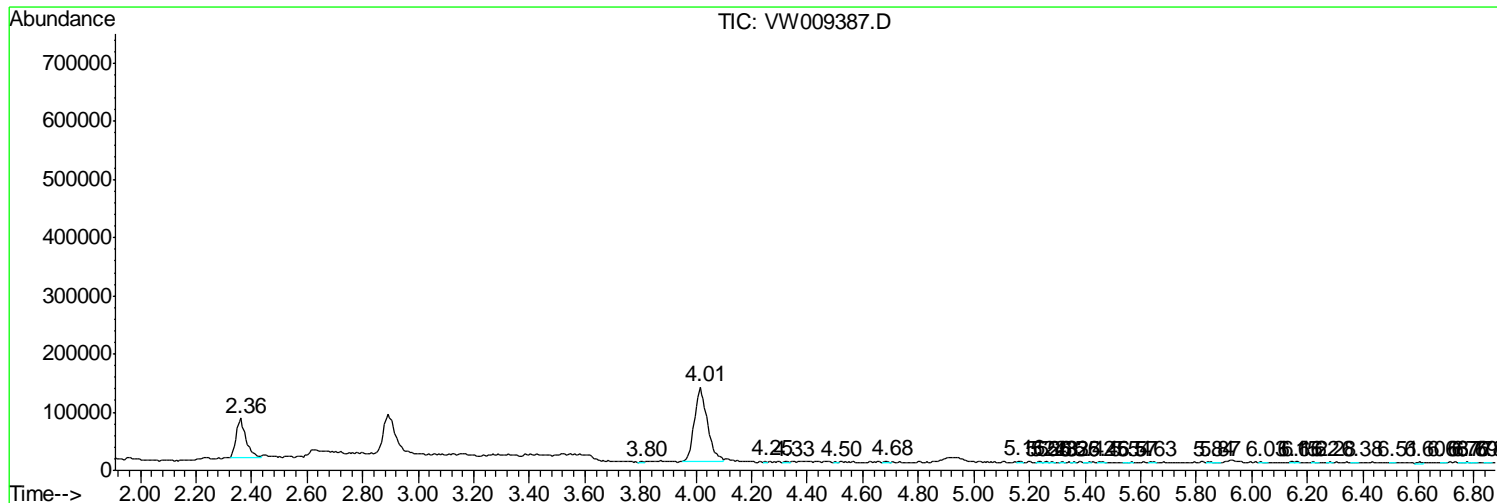
Sum of corrected areas: 10669540

Data Path : Z:\VOASRV\HPCHEM1\MSVOA W\DATA\VW032319\  
 Data File : VW009387.D  
 Acq On : 23 Mar 2019 13:44  
 Operator : SY/VA  
 Sample : K2048-20  
 Misc : 6.17G/10ML/MSVOA W/SOIL  
 ALS Vial : 1 Sample Multiplier: 1

**Instrument :**  
 MSVOA\_W  
**ClientSampled :**  
 BF0G2

Quant Method : Z:\VOASRV\HPCHEM1\MSVOA\_W\METHOD\SOM2WLM031419S.M  
 Quant Title : VOC Analysis

TIC Library : C:\DATABASE\NIST11.L  
 TIC Integration Parameters: LSCINT.P



Data Path : Z:\VOASRV\HPCHEM1\MSVOA\_W\DATA\VW032319\  
Data File : VW009387.D  
Acq On : 23 Mar 2019 13:44  
Operator : SY/VA  
Sample : K2048-20  
Misc : 6.17G/10ML/MSVOA\_W/SOIL  
ALS Vial : 1 Sample Multiplier: 1

Instrument :  
MSVOA\_W  
ClientSampleId :  
BF0G2

Quant Method : Z:\VOASRV\HPCHEM1\MSVOA\_W\METHOD\SOM2WLM031419S.M  
Quant Title : VOC Analysis

TIC Library : C:\DATABASE\NIST11.L  
TIC Integration Parameters: LSCINT.P

No Library Search Compounds Detected

\*\*\*\*\*

Data Path : Z:\VOASRV\HPCHEM1\MSVOA\_W\DATA\VW032319\  
Data File : VW009387.D  
Acq On : 23 Mar 2019 13:44  
Operator : SY/VA  
Sample : K2048-20  
Misc : 6.17G/10ML/MSVOA\_W/SOIL  
ALS Vial : 1 Sample Multiplier: 1

Instrument :  
MSVOA\_W  
ClientSampleId :  
BF0G2

Quant Method : Z:\VOASRV\HPCHEM1\MSVOA\_W\METHOD\SOM2WLM031419S.M  
Quant Title : VOC Analysis

TIC Library : C:\DATABASE\NIST11.L  
TIC Integration Parameters: LSCINT.P

TIC Top Hit name	RT	EstConc	Units	Response	--Internal Standard--			
					#	RT	Resp	Conc

---