

Data Path : Z:\voasrv\HPCHEM1\MSVOA\_W\Data\VW032724\  
 Data File : VW028248.D  
 Acq On : 27 Mar 2024 14:13  
 Operator : SY/MD  
 Sample : P1886-05  
 Misc : 4.41g/10mL/MSVOA\_W/SOIL/A  
 ALS Vial : 1 Sample Multiplier: 1

Instrument :  
 MSVOA\_W  
 ClientSampleId :  
 E07A4

Integration Parameters: LSCINT.P

Integrator: RTE  
 Smoothing : OFF Filtering: 5  
 Sampling : 1 Min Area: 0 % of largest Peak  
 Start Thrs: 0.2 Max Peaks: 100  
 Stop Thrs : 0 Peak Location: TOP

If leading or trailing edge < 100 prefer < Baseline drop else tangent >  
 Peak separation: 5

Method : Z:\voasrv\HPCHEM1\MSVOA\_W\Method\SFAMWLM031424SMA.M  
 Title : SFAM01.0

Signal : TIC: VW028248.D\data.ms

peak #	R.T. min	first scan	max scan	last scan	PK TY	peak height	corr. area	corr. % max.	% of total
1	2.363	72	78	91	rBV	48752	111452	9.63%	1.251%
2	2.777	144	146	147	rBV	500	397	0.03%	0.004%
3	2.905	157	167	182	rBV	33697	101562	8.77%	1.140%
4	3.131	203	204	205	rBV	663	368	0.03%	0.004%
5	3.399	242	248	256	rVB7	1671	4438	0.38%	0.050%
6	3.460	256	258	260	rBV2	385	345	0.03%	0.004%
7	3.722	298	301	305	rVB2	302	519	0.04%	0.006%
8	3.917	330	333	335	rBV2	555	572	0.05%	0.006%
9	4.027	339	351	375	rVV	131412	399472	34.50%	4.483%
10	4.246	385	387	389	rBV2	270	276	0.02%	0.003%
11	4.381	406	409	411	rBV3	536	702	0.06%	0.008%
12	4.411	412	414	416	rVB3	420	301	0.03%	0.003%
13	4.533	433	434	437	rVB	327	228	0.02%	0.003%
14	4.667	455	456	458	rBV	355	233	0.02%	0.003%
15	4.740	467	468	470	rBV	402	242	0.02%	0.003%
16	4.771	470	473	475	rBV2	380	330	0.03%	0.004%
17	4.789	475	476	479	rVB2	284	232	0.02%	0.003%
18	4.929	488	499	503	rBV3	3489	10716	0.93%	0.120%
19	5.094	525	526	530	rBV2	298	285	0.02%	0.003%
20	5.240	548	550	552	rVB2	367	279	0.02%	0.003%
21	5.441	580	583	586	rBV2	325	503	0.04%	0.006%
22	5.618	611	612	616	rBV3	321	275	0.02%	0.003%
23	5.807	641	643	646	rVB2	196	234	0.02%	0.003%
24	5.844	646	649	651	rBV2	253	245	0.02%	0.003%
25	5.941	656	665	680	rBV4	5008	15892	1.37%	0.178%
26	6.075	684	687	688	rBV	473	269	0.02%	0.003%
27	6.118	692	694	697	rBV	382	381	0.03%	0.004%
28	6.240	712	714	718	rBV4	308	370	0.03%	0.004%
29	6.271	718	719	721	rBV	270	252	0.02%	0.003%
30	6.435	744	746	747	rBV	273	221	0.02%	0.002%
31	6.588	768	771	774	rBV	248	372	0.03%	0.004%
32	7.075	843	851	870	rVV	34382	102433	8.85%	1.150%
33	7.252	872	880	894	rVB3	29018	76267	6.59%	0.856%
34	7.502	920	921	923	rBV2	219	223	0.02%	0.003%
35	7.648	933	945	957	rBV	201030	494868	42.74%	5.554%
36	7.965	996	997	1001	rVB2	536	326	0.03%	0.004%

Data Path : Z:\voasrv\HPCHEM1\MSVOA\_W\Data\VW032724\  
 Data File : VW028248.D  
 Acq On : 27 Mar 2024 14:13  
 Operator : SY/MD  
 Sample : P1886-05  
 Misc : 4.41g/10mL/MSVOA\_W/SOIL/A  
 ALS Vial : 1 Sample Multiplier: 1

Instrument :  
 MSVOA\_W  
 ClientSampleId :  
 E07A4

Integration Parameters: LSCINT.P

Integrator: RTE  
 Smoothing : OFF  
 Sampling : 1  
 Start Thrs : 0.2  
 Stop Thrs : 0

Filtering: 5  
 Min Area: 0 % of largest Peak  
 Max Peaks: 100  
 Peak Location: TOP

If leading or trailing edge < 100 prefer < Baseline drop else tangent >  
 Peak separation: 5

Method : Z:\voasrv\HPCHEM1\MSVOA\_W\Method\SFAMWLM031424SMA.M  
 Title : SFAM01.0

37	8.069	1013	1014	1017	rVB3	391	294	0.03%	0.003%
38	8.148	1024	1027	1029	rBV3	352	486	0.04%	0.005%
39	8.167	1029	1030	1036	rVB3	350	396	0.03%	0.004%
40	8.276	1038	1048	1066	rBV2	398736	1157877	100.00%	12.994%
41	8.691	1111	1116	1121	rBV5	983	2122	0.18%	0.024%
42	8.843	1132	1141	1152	rBV	482368	956969	82.65%	10.740%
43	8.996	1165	1166	1168	rBV2	393	289	0.02%	0.003%
44	9.075	1174	1179	1185	rVB5	1598	3522	0.30%	0.040%
45	9.130	1187	1188	1191	rVB	497	363	0.03%	0.004%
46	9.276	1203	1212	1222	rBV	259174	531051	45.86%	5.960%
47	9.459	1240	1242	1245	rVB2	357	304	0.03%	0.003%
48	9.587	1261	1263	1267	rVV3	431	587	0.05%	0.007%
49	9.660	1272	1275	1279	rVV4	576	1104	0.10%	0.012%
50	9.831	1300	1303	1305	rBV3	292	273	0.02%	0.003%
51	9.910	1314	1316	1319	rBV	215	259	0.02%	0.003%
52	9.947	1319	1322	1323	rBV	294	347	0.03%	0.004%
53	10.032	1328	1336	1347	rBV	148773	270398	23.35%	3.035%
54	10.319	1374	1383	1391	rBV	547378	974122	84.13%	10.932%
55	10.575	1418	1425	1437	rBV	91256	163143	14.09%	1.831%
56	10.697	1442	1445	1451	rVB3	2855	4624	0.40%	0.052%
57	10.800	1461	1462	1465	rVB	608	314	0.03%	0.004%
58	10.861	1465	1472	1475	rBV3	690	1262	0.11%	0.014%
59	10.922	1475	1482	1492	rBV	135431	230370	19.90%	2.585%
60	11.294	1540	1543	1547	rVB	281	459	0.04%	0.005%
61	11.337	1547	1550	1553	rBV	318	513	0.04%	0.006%
62	11.367	1553	1555	1557	rBV2	448	315	0.03%	0.004%
63	11.501	1575	1577	1580	rBV2	308	312	0.03%	0.004%
64	11.562	1584	1587	1590	rBV2	182	267	0.02%	0.003%
65	11.629	1590	1598	1608	rBV	654247	1103347	95.29%	12.382%
66	11.721	1612	1613	1624	rVV6	2060	3617	0.31%	0.041%
67	11.843	1627	1633	1640	rVB7	2494	5329	0.46%	0.060%
68	11.904	1640	1643	1644	rBV	270	269	0.02%	0.003%
69	11.989	1654	1657	1659	rBV2	476	515	0.04%	0.006%
70	12.172	1681	1687	1694	rVB6	1367	3194	0.28%	0.036%
71	12.251	1698	1700	1703	rBV	296	286	0.02%	0.003%
72	12.282	1703	1705	1708	rBV2	312	321	0.03%	0.004%
73	12.349	1714	1716	1720	rBV2	314	300	0.03%	0.003%
74	12.465	1732	1735	1740	rVB4	627	1031	0.09%	0.012%
75	12.538	1745	1747	1748	rBV	382	221	0.02%	0.002%
76	12.605	1752	1758	1765	rVV2	5559	9939	0.86%	0.112%

Data Path : Z:\voasrv\HPCHEM1\MSVOA\_W\Data\VW032724\  
 Data File : VW028248.D  
 Acq On : 27 Mar 2024 14:13  
 Operator : SY/MD  
 Sample : P1886-05  
 Misc : 4.41g/10mL/MSVOA\_W/SOIL/A  
 ALS Vial : 1 Sample Multiplier: 1

Instrument :  
 MSVOA\_W  
 ClientSampleId :  
 E07A4

Integration Parameters: LSCINT.P

Integrator: RTE  
 Smoothing : OFF  
 Sampling : 1  
 Start Thrs : 0.2  
 Stop Thrs : 0

Filtering: 5  
 Min Area: 0 % of largest Peak  
 Max Peaks: 100  
 Peak Location: TOP

If leading or trailing edge < 100 prefer < Baseline drop else tangent >  
 Peak separation: 5

Method : Z:\voasrv\HPCHEM1\MSVOA\_W\Method\SFAMWLM031424SMA.M  
 Title : SFAM01.0

77	12.690	1765	1772	1780	rBV	192834	319325	27.58%	3.584%
78	12.867	1799	1801	1802	rBV2	342	307	0.03%	0.003%
79	12.922	1808	1810	1811	rBV2	664	465	0.04%	0.005%
80	12.989	1819	1821	1822	rBV2	634	505	0.04%	0.006%
81	13.074	1834	1835	1836	rBV	428	227	0.02%	0.003%
82	13.227	1857	1860	1861	rBV3	900	1053	0.09%	0.012%
83	13.391	1882	1887	1888	rBV3	655	1018	0.09%	0.011%
84	13.464	1895	1899	1904	rBV7	2336	4413	0.38%	0.050%
85	13.556	1907	1914	1925	rVV	625059	1028443	88.82%	11.542%
86	13.641	1925	1928	1935	rVB3	6263	10261	0.89%	0.115%
87	13.848	1955	1962	1975	rVB	477679	762057	65.82%	8.552%
88	14.062	1994	1997	2002	rVB2	3584	5202	0.45%	0.058%
89	14.324	2035	2040	2043	rBV3	2086	2955	0.26%	0.033%
90	14.415	2053	2055	2056	rBV2	498	330	0.03%	0.004%
91	14.519	2067	2072	2077	rVB4	3688	6572	0.57%	0.074%
92	14.623	2087	2089	2091	rBV2	491	425	0.04%	0.005%
93	14.842	2123	2125	2130	rVB3	1304	1759	0.15%	0.020%
94	14.946	2141	2142	2144	rBV2	343	272	0.02%	0.003%
95	15.086	2163	2165	2166	rBV2	376	321	0.03%	0.004%
96	15.171	2177	2179	2180	rBV	806	574	0.05%	0.006%
97	15.202	2180	2184	2188	rVV4	2441	4315	0.37%	0.048%
98	15.238	2188	2190	2196	rVB4	1732	2353	0.20%	0.026%
99	16.397	2378	2380	2383	rVB3	465	345	0.03%	0.004%
100	16.695	2427	2429	2430	rBV	510	323	0.03%	0.004%

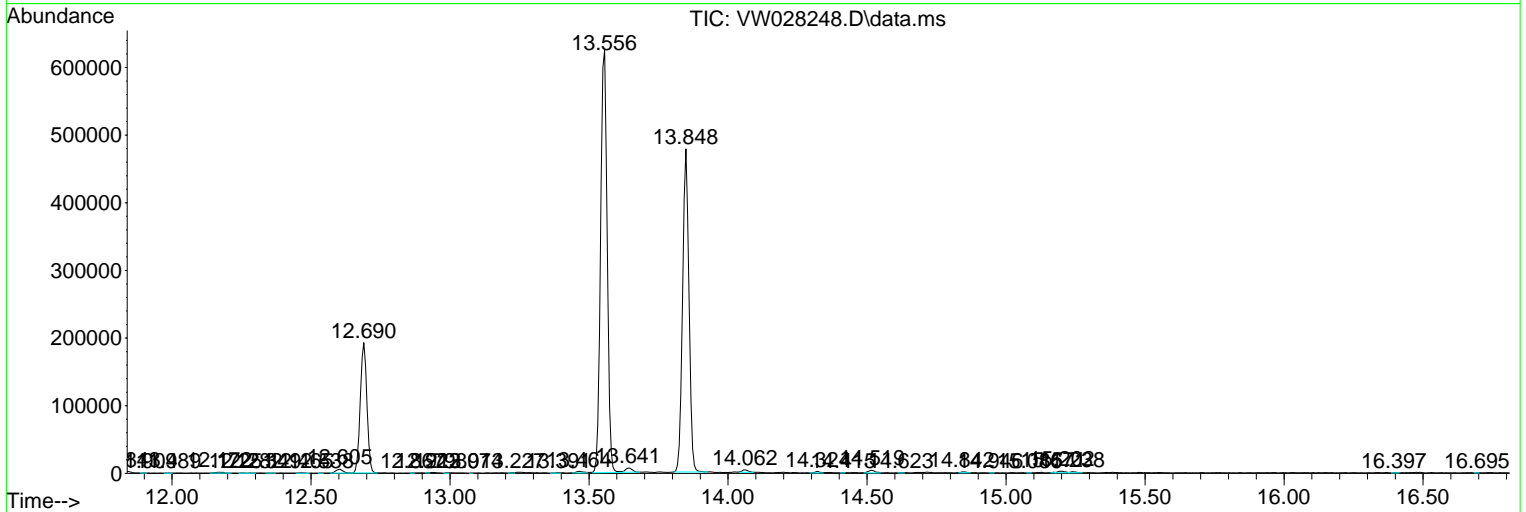
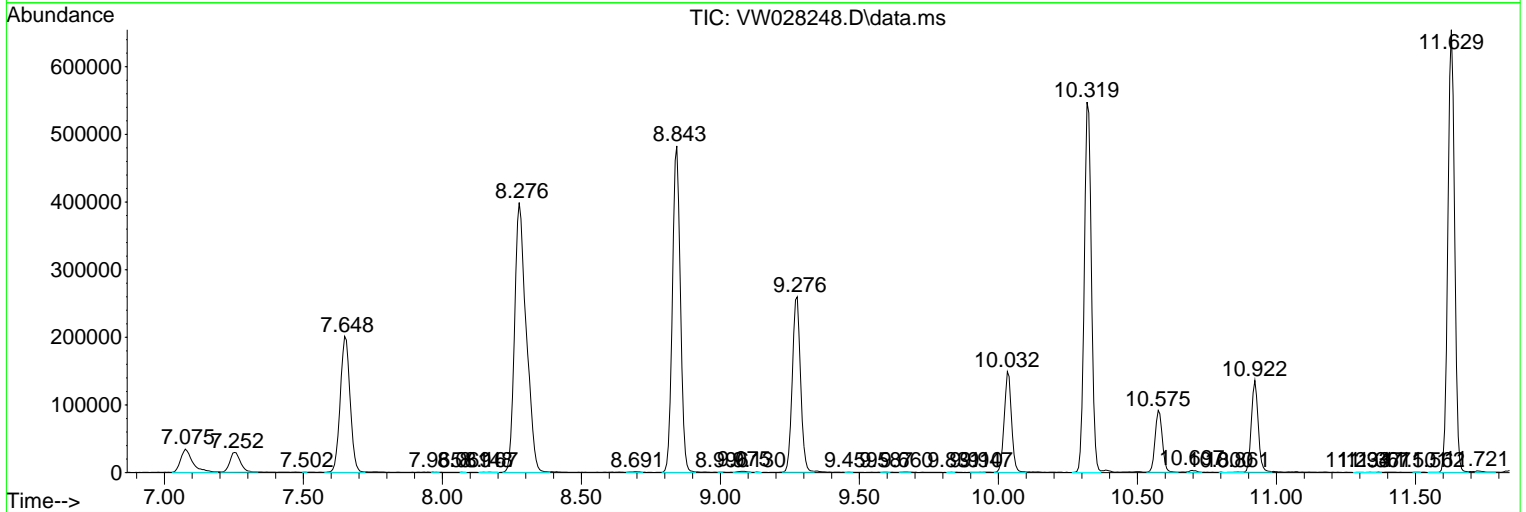
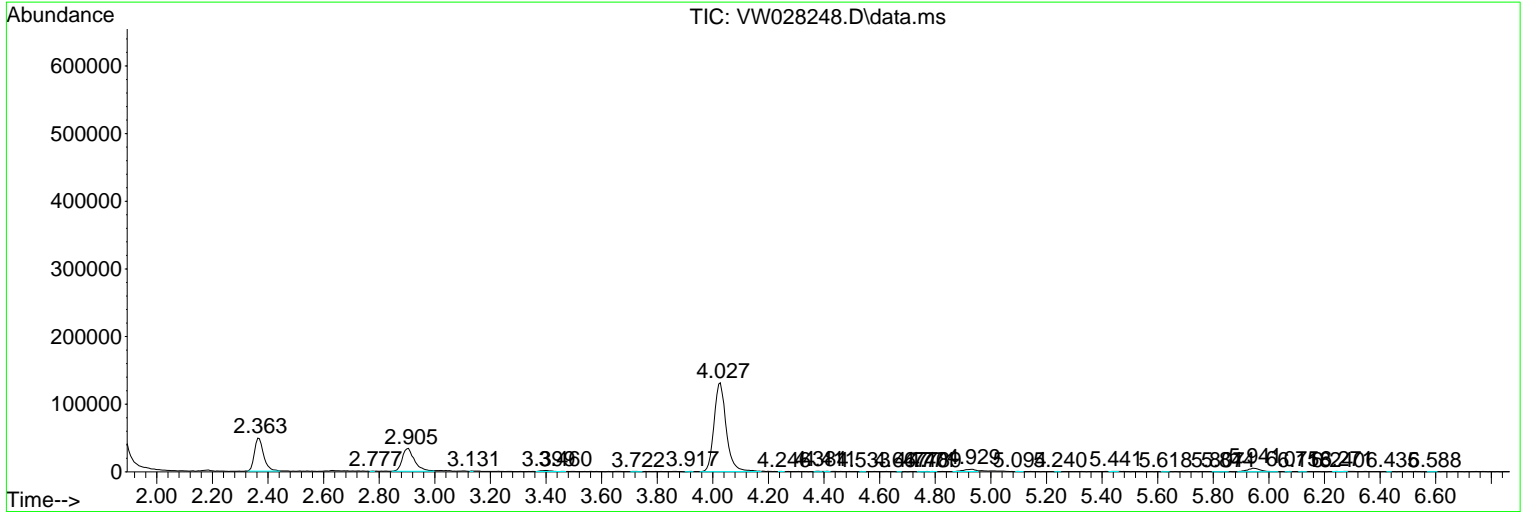
Sum of corrected areas: 8910611

Data Path : Z:\voasrv\HPCHEM1\MSVOA\_W\Data\VW032724\  
 Data File : VW028248.D  
 Acq On : 27 Mar 2024 14:13  
 Operator : SY/MD  
 Sample : P1886-05  
 Misc : 4.41g/10mL/MSVOA\_W/SOIL/A  
 ALS Vial : 1 Sample Multiplier: 1

Instrument :  
 MSVOA\_W  
 ClientSampleId :  
 E07A4

Quant Method : Z:\voasrv\HPCHEM1\MSVOA\_W\Method\SFAMWLM031424SMA.M  
 Quant Title : SFAM01.0

TIC Library : C:\Database\NIST20.L  
 TIC Integration Parameters: LSCINT.P



Data Path : Z:\voasrv\HPCHEM1\MSVOA\_W\Data\VW032724\  
 Data File : VW028248.D  
 Acq On : 27 Mar 2024 14:13  
 Operator : SY/MD  
 Sample : P1886-05  
 Misc : 4.41g/10mL/MSVOA\_W/SOIL/A  
 ALS Vial : 1 Sample Multiplier: 1

Instrument :  
 MSVOA\_W  
 ClientSampleId :  
 E07A4

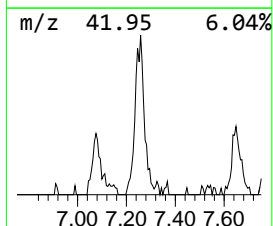
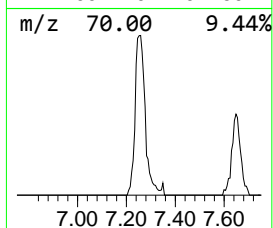
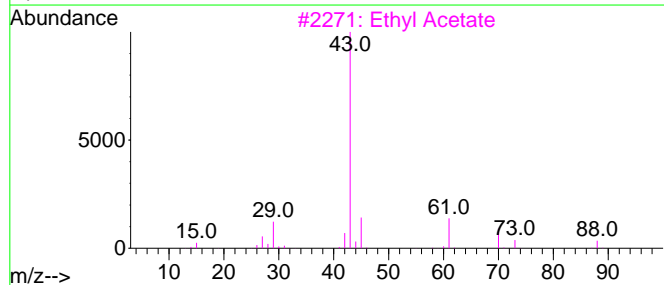
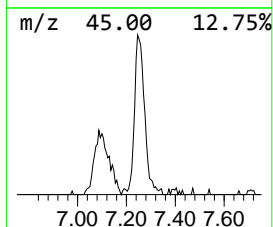
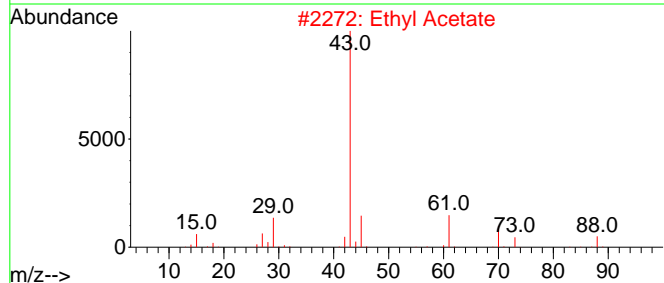
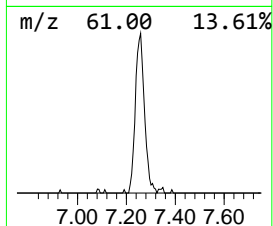
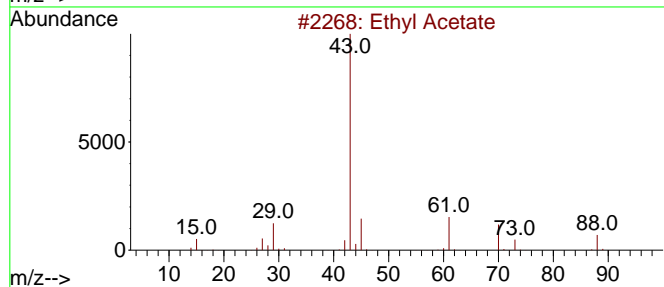
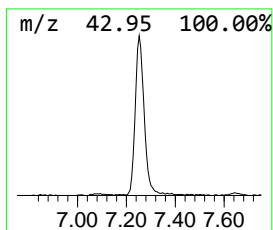
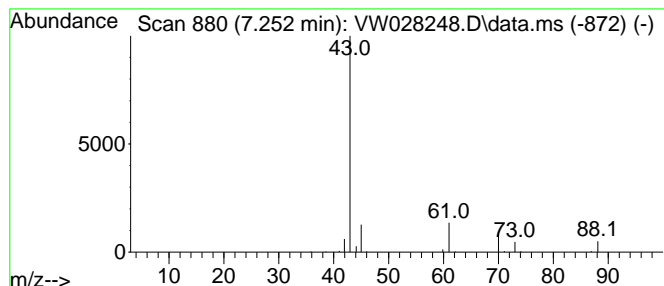
Quant Method : Z:\voasrv\HPCHEM1\MSVOA\_W\Method\SFAMWLM031424SMA.M  
 Quant Title : SFAM01.0

TIC Library : C:\Database\NIST20.L  
 TIC Integration Parameters: LSCINT.P

\*\*\*\*\*  
 Peak Number 1 Ethyl Acetate Concentration Rank 2

R.T.	EstConc	Area	Relative to ISTD	R.T.
7.252	1.99 ug/L	76267	1,4-Difluorobenzene	8.843

Hit#	of 5	Tentative ID	MW	MolForm	CAS#	Qual
1		Ethyl Acetate	88	C4H8O2	000141-78-6	90
2		Ethyl Acetate	88	C4H8O2	000141-78-6	90
3		Ethyl Acetate	88	C4H8O2	000141-78-6	86
4		Ethyl Acetate	88	C4H8O2	000141-78-6	59
5		CH3C(O)CH2CH2OH	88	C4H8O2	000590-90-9	33



Data Path : Z:\voasrv\HPCHEM1\MSVOA\_W\Data\VW032724\  
Data File : VW028248.D  
Acq On : 27 Mar 2024 14:13  
Operator : SY/MD  
Sample : P1886-05  
Misc : 4.41g/10mL/MSVOA\_W/SOIL/A  
ALS Vial : 1 Sample Multiplier: 1

Instrument :  
MSVOA\_W  
ClientSampleId :  
E07A4

Quant Method : Z:\voasrv\HPCHEM1\MSVOA\_W\Method\SFAMWLM031424SMA.M  
Quant Title : SFAM01.0

TIC Library : C:\Database\NIST0.L  
TIC Integration Parameters: LSCINT.P

TIC Top Hit name	RT	EstConc	Units	Response	--Internal Standard--			
					#	RT	Resp	Conc
Ethyl Acetate	7.252	2.0	ug/L	76267	1	8.843	956969	25.0