

Data Path : Z:\VOASRV\HPCHEM1\MSVOA W\DATA\VW033119\
 Data File : VW009611.D
 Acq On : 31 Mar 2019 15:27
 Operator : SY/VA
 Sample : K2130-04
 Misc : 6.92G/5.0ML/MSVOA W/SOIL
 ALS Vial : 8 Sample Multiplier: 1

Instrument :
 MSVOA_W
 ClientSampleId :
 FK-GF-02-034-B

Integration Parameters: RTEINT.P

Integrator: RTE
 Smoothing : ON
 Sampling : 1
 Start Thrs: 0.2
 Stop Thrs : 0

Filtering: 5
 Min Area: 3 % of largest Peak
 Max Peaks: 100
 Peak Location: TOP

If leading or trailing edge < 100 prefer < Baseline drop else tangent >
 Peak separation: 5

Method : Z:\VOASRV\HPCHEM1\MSVOA_W\METHOD\82W032919S.M
 Title : SW846 8260

Signal : TIC

peak #	R.T. min	first scan	max scan	last scan	PK TY	peak height	corr. area	corr. % max.	% of total
1	2.361	66	75	83	rBV2	22962	64253	5.05%	0.632%
2	4.123	353	364	374	rBV2	9722	30214	2.37%	0.297%
3	4.909	485	493	494	rBV2	11957	21650	1.70%	0.213%
4	5.921	651	659	672	rVB6	14134	44634	3.51%	0.439%
5	7.147	849	860	875	rBV	69145	196959	15.47%	1.937%
6	7.878	971	980	985	rBV	172312	413025	32.44%	4.062%
7	7.945	985	991	1000	rVB	357193	794328	62.39%	7.812%
8	8.250	1032	1041	1042	rBV2	13785	21554	1.69%	0.212%
9	8.305	1042	1050	1061	rVB	190429	432346	33.96%	4.252%
10	8.842	1129	1138	1147	rBV	550843	1067838	83.87%	10.502%
11	9.329	1214	1218	1223	rVB5	8019	14262	1.12%	0.140%
12	10.323	1373	1381	1388	rBV	672504	1166315	91.61%	11.470%
13	10.384	1388	1391	1397	rVB2	38392	64134	5.04%	0.631%
14	10.500	1403	1410	1417	rVB8	6595	17278	1.36%	0.170%
15	10.664	1432	1437	1441	rBV5	8716	14951	1.17%	0.147%
16	10.756	1447	1452	1458	rVB6	9191	17875	1.40%	0.176%
17	11.177	1517	1521	1525	rVB4	11412	17835	1.40%	0.175%
18	11.225	1525	1529	1535	rVB5	11784	20180	1.59%	0.198%
19	11.439	1555	1564	1571	rVB5	12195	35455	2.78%	0.349%
20	11.628	1585	1595	1606	rBV	734527	1273158	100.00%	12.521%
21	11.871	1631	1635	1640	rVV3	15580	30587	2.40%	0.301%
22	11.914	1640	1642	1649	rVB5	10283	13479	1.06%	0.133%
23	12.134	1671	1678	1690	rBV8	22168	72127	5.67%	0.709%
24	12.256	1692	1698	1701	rVB3	13568	22263	1.75%	0.219%
25	12.341	1707	1712	1714	rBV4	14512	24134	1.90%	0.237%
26	12.475	1728	1734	1747	rVB4	27193	65819	5.17%	0.647%
27	12.621	1751	1758	1765	rBV	457090	765823	60.15%	7.532%
28	12.707	1765	1772	1778	rBV10	11997	30772	2.42%	0.303%
29	12.780	1781	1784	1790	rVB5	29029	50859	3.99%	0.500%
30	12.865	1790	1798	1801	rBV6	15935	37540	2.95%	0.369%
31	12.944	1801	1811	1816	rVV3	62237	144375	11.34%	1.420%
32	12.993	1816	1819	1822	rVV5	12731	21388	1.68%	0.210%
33	13.030	1822	1825	1830	rVV6	11364	18124	1.42%	0.178%
34	13.103	1830	1837	1844	rVV4	22036	63184	4.96%	0.621%

Data Path : Z:\VOASRV\HPCHEM1\MSVOA W\DATA\VW033119\
 Data File : VW009611.D
 Acq On : 31 Mar 2019 15:27
 Operator : SY/VA
 Sample : K2130-04
 Misc : 6.92G/5.0ML/MSVOA W/SOIL
 ALS Vial : 8 Sample Multiplier: 1

Instrument :
 MSVOA_W
 ClientSampleId :
 FK-GF-02-034-B

Integration Parameters: RTEINT.P
 Integrator: RTE
 Smoothing : ON
 Sampling : 1
 Start Thrs: 0.2
 Stop Thrs : 0
 Filtering: 5
 Min Area: 3 % of largest Peak
 Max Peaks: 100
 Peak Location: TOP

If leading or trailing edge < 100 prefer < Baseline drop else tangent >
 Peak separation: 5

Method : Z:\VOASRV\HPCHEM1\MSVOA_W\METHOD\82W032919S.M
 Title : SW846 8260

35	13.170	1844	1848	1857	rVB10	19983	44207	3.47%	0.435%
36	13.444	1886	1893	1899	rBV6	31733	83237	6.54%	0.819%
37	13.560	1905	1912	1921	rBV	699385	1169234	91.84%	11.499%
38	13.755	1941	1944	1946	rVV3	13559	15650	1.23%	0.154%
39	13.792	1946	1950	1958	rVB2	40183	72098	5.66%	0.709%
40	13.883	1959	1965	1970	rBV3	51445	94239	7.40%	0.927%
41	13.950	1973	1976	1980	rVB	14792	20075	1.58%	0.197%
42	14.097	1994	2000	2006	rVB3	46543	96769	7.60%	0.952%
43	14.206	2013	2018	2023	rVB3	43617	74314	5.84%	0.731%
44	14.267	2023	2028	2035	rBV9	11048	27010	2.12%	0.266%
45	14.341	2035	2040	2044	rBV4	19179	32811	2.58%	0.323%
46	14.389	2044	2048	2051	rBV4	26675	39781	3.12%	0.391%
47	14.420	2051	2053	2057	rVV	24978	34063	2.68%	0.335%
48	14.456	2057	2059	2063	rVB2	29535	39051	3.07%	0.384%
49	14.505	2063	2067	2070	rBV3	24022	32717	2.57%	0.322%
50	14.548	2070	2074	2080	rVB6	29507	50628	3.98%	0.498%
51	14.694	2094	2098	2101	rBV4	17130	30754	2.42%	0.302%
52	14.737	2102	2105	2109	rVB3	24898	37102	2.91%	0.365%
53	14.804	2109	2116	2122	rBV4	77358	192681	15.13%	1.895%
54	14.859	2122	2125	2131	rVB3	22560	37215	2.92%	0.366%
55	14.962	2138	2142	2147	rBV2	28305	46046	3.62%	0.453%
56	15.072	2155	2160	2163	rBV5	30224	52001	4.08%	0.511%
57	15.182	2172	2178	2185	rVB3	39607	90015	7.07%	0.885%
58	15.426	2213	2218	2223	rBV	31544	62137	4.88%	0.611%
59	15.481	2223	2227	2228	rBV4	14431	19679	1.55%	0.194%
60	15.664	2249	2257	2263	rBV5	24766	62984	4.95%	0.619%
61	15.737	2266	2269	2273	rVV6	12230	20981	1.65%	0.206%
62	15.822	2276	2283	2286	rVV8	20312	54019	4.24%	0.531%
63	15.871	2286	2291	2298	rVV3	52027	108378	8.51%	1.066%
64	15.956	2302	2305	2309	rVV6	11784	18162	1.43%	0.179%
65	16.029	2312	2317	2324	rVV4	16306	36253	2.85%	0.357%
66	16.188	2335	2343	2349	rBV5	38356	89384	7.02%	0.879%
67	16.383	2366	2375	2381	rBV4	40807	101155	7.95%	0.995%
68	16.450	2381	2386	2390	rVV4	14374	25905	2.03%	0.255%
69	16.651	2411	2419	2425	rBV10	21108	68680	5.39%	0.675%

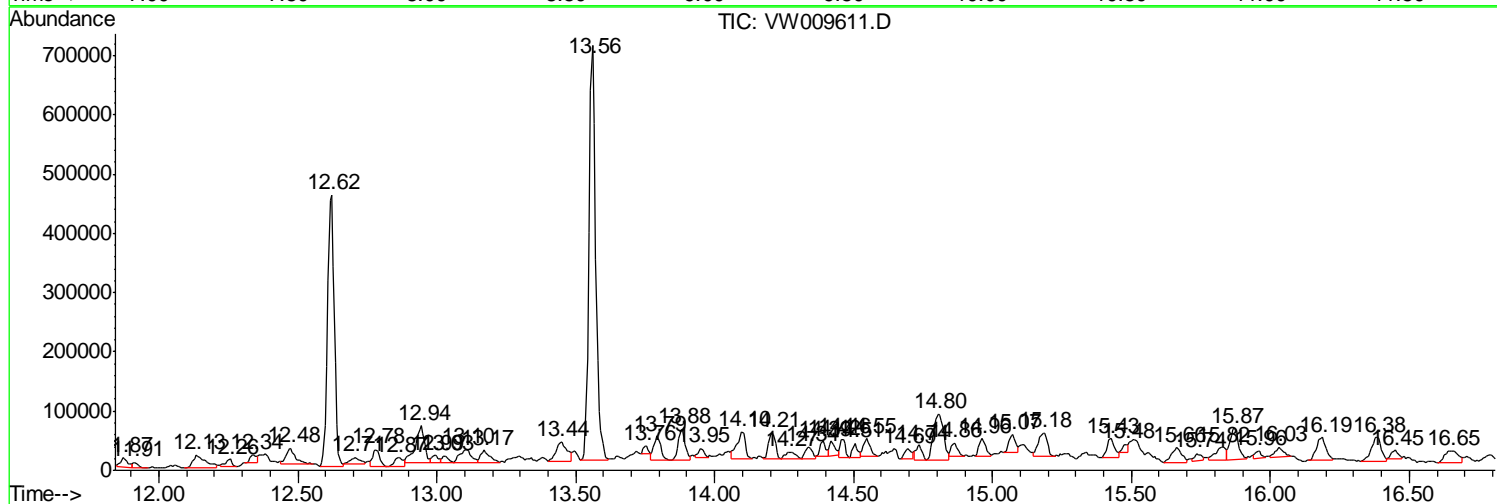
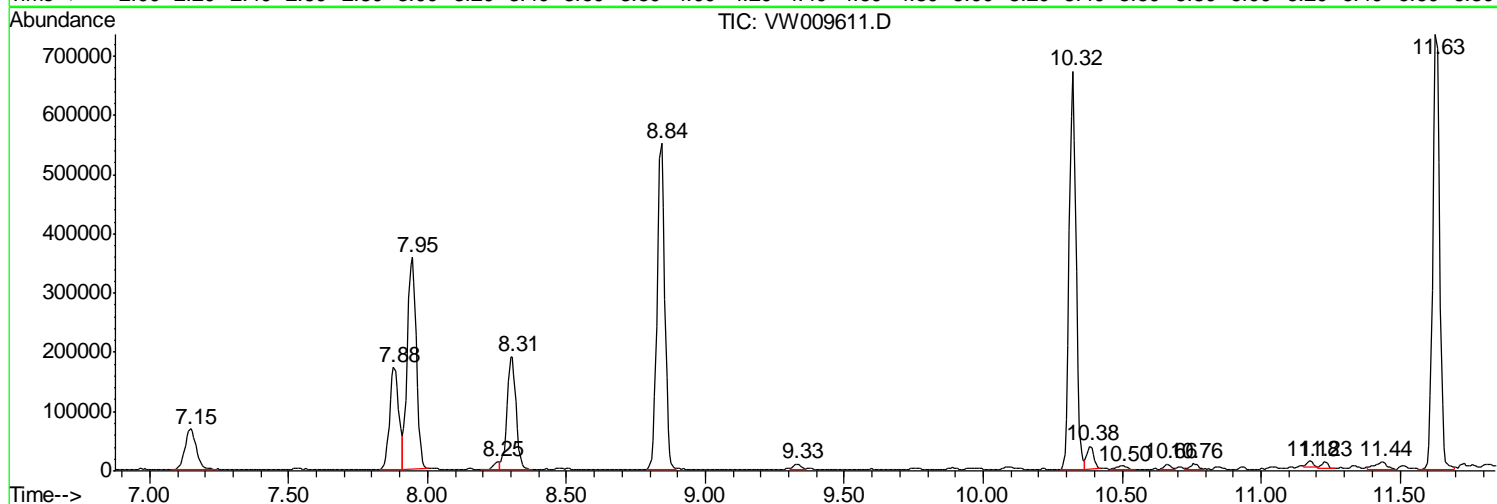
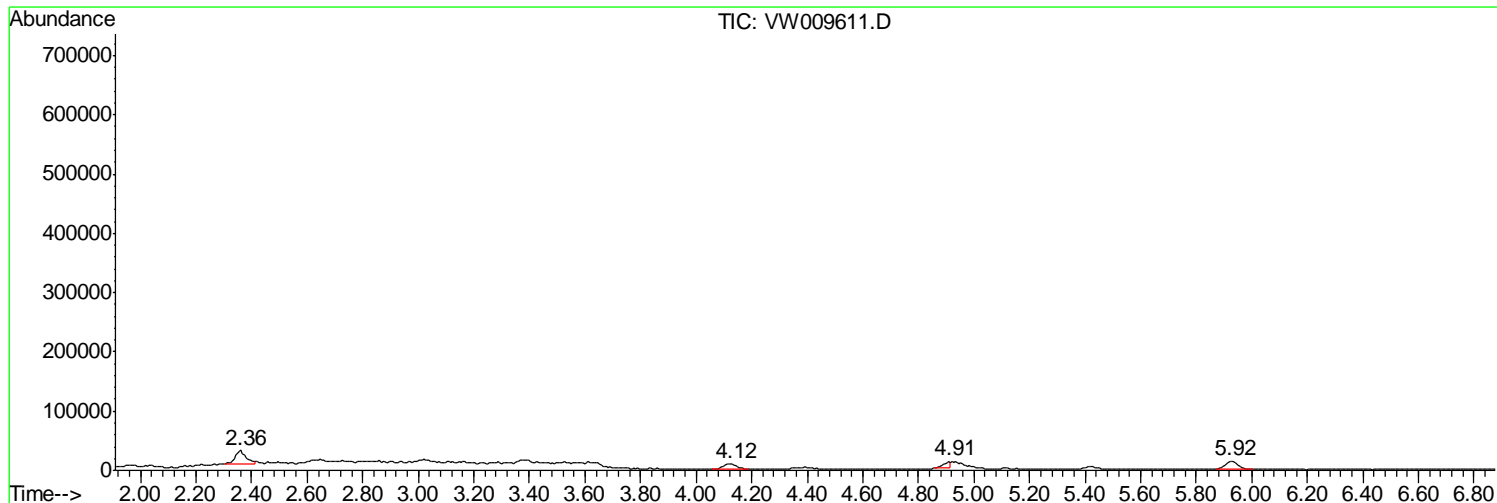
Sum of corrected areas: 10168133

Data Path : Z:\VOASRV\HPCHEM1\MSVOA W\DATA\VW033119\
 Data File : VW009611.D
 Acq On : 31 Mar 2019 15:27
 Operator : SY/VA
 Sample : K2130-04
 Misc : 6.92G/5.0ML/MSVOA W/SOIL
 ALS Vial : 8 Sample Multiplier: 1

Instrument :
 MSVOA_W
 ClientSampleId :
 FK-GF-02-034-B

Quant Method : Z:\VOASRV\HPCHEM1\MSVOA_W\METHOD\82W032919S.M
 Quant Title : SW846 8260

TIC Library : C:\DATABASE\NIST11.L
 TIC Integration Parameters: LSCINT.P



Data Path : Z:\VOASRV\HPCHEM1\MSVOA W\DATA\VW033119\
 Data File : VW009611.D
 Acq On : 31 Mar 2019 15:27
 Operator : SY/VA
 Sample : K2130-04
 Misc : 6.92G/5.0ML/MSVOA W/SOIL
 ALS Vial : 8 Sample Multiplier: 1

Instrument :
 MSVOA_W
 ClientSampled :
 FK-GF-02-034-B

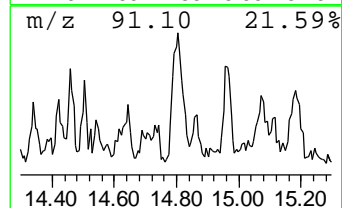
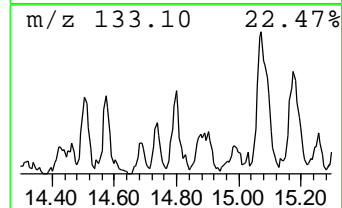
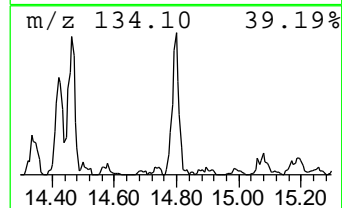
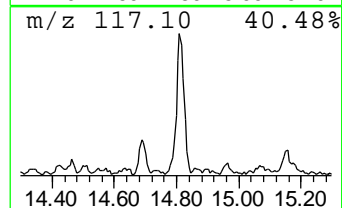
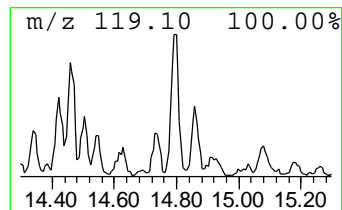
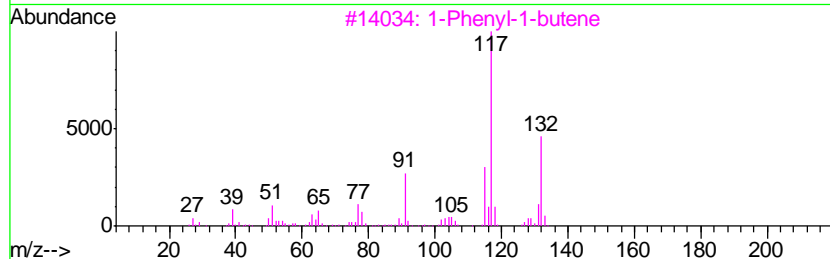
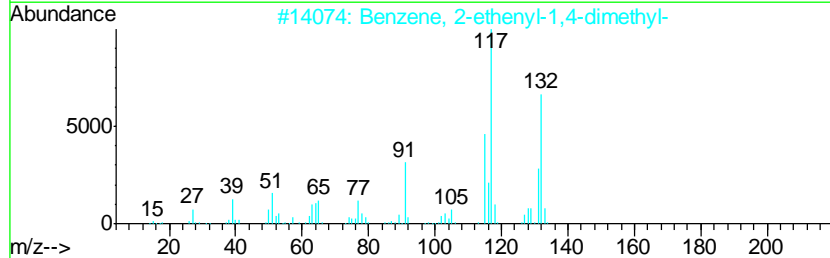
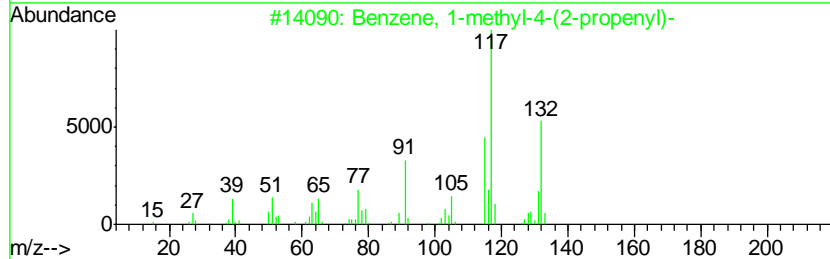
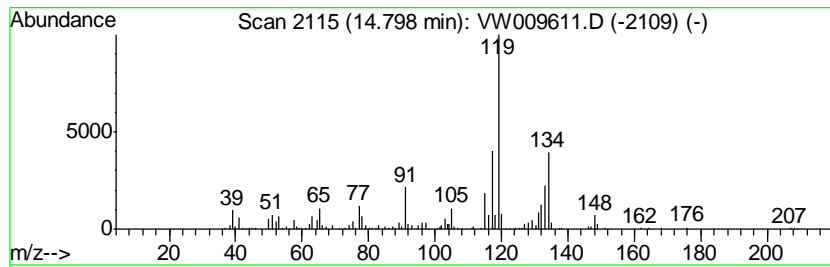
Quant Method : Z:\VOASRV\HPCHEM1\MSVOA_W\METHOD\82W032919S.M
 Quant Title : SW846 8260

TIC Library : C:\DATABASE\NIST11.L
 TIC Integration Parameters: LSCINT.P

 Peak Number 2 Benzene, 1-methyl-4-(2-prop... Concentration Rank 2

R.T.	EstConc	Area	Relative to ISTD	R.T.
14.80	8.24 ug/l	192681	1,4-Dichlorobenzene-d4	13.56

Hit#	of	Tentative ID	MW	MolForm	CAS#	Qual
1	5	Benzene, 1-methyl-4-(2-propenyl)-	132	C10H12	003333-13-9	70
2		Benzene, 2-ethenyl-1,4-dimethyl-	132	C10H12	002039-89-6	55
3		1-Phenyl-1-butene	132	C10H12	000824-90-8	55
4		(E)-1-Phenyl-1-butene	132	C10H12	001005-64-7	55
5		Benzene, (2-methyl-1-propenyl)-	132	C10H12	000768-49-0	55



Data Path : Z:\VOASRV\HPCHEM1\MSVOA_W\DATA\VW033119\
Data File : VW009611.D
Acq On : 31 Mar 2019 15:27
Operator : SY/VA
Sample : K2130-04
Misc : 6.92G/5.0ML/MSVOA_W/SOIL
ALS Vial : 8 Sample Multiplier: 1

Instrument :
MSVOA_W
ClientSampleId :
FK-GF-02-034-B

Quant Method : Z:\VOASRV\HPCHEM1\MSVOA_W\METHOD\82W032919S.M
Quant Title : SW846 8260

TIC Library : C:\DATABASE\NIST11.L
TIC Integration Parameters: LSCINT.P

TIC Top Hit name	RT	EstConc	Units	Response	--Internal Standard--			
					#	RT	Resp	Conc
Benzene, 1-methyl...	14.80	8.2	ug/l	192681	4	13.56	1169230	50.0