

Data Path : Z:\voasrv\HPCHEM1\MSVOA\_W\Data\VW040122\  
 Data File : VW022369.D  
 Acq On : 01 Apr 2022 16:19  
 Operator : SY/VA  
 Sample : N2225-02  
 Misc : 7.22g/10mL/MSVOA\_W/SOIL  
 ALS Vial : 1 Sample Multiplier: 1

Instrument :  
 MSVOA\_W  
 ClientSampleId :  
 BGQD1

Integration Parameters: LSCINT.P

Integrator: RTE  
 Smoothing : OFF Filtering: 5  
 Sampling : 1 Min Area: 0 % of largest Peak  
 Start Thrs: 0.2 Max Peaks: 100  
 Stop Thrs : 0 Peak Location: TOP

If leading or trailing edge < 100 prefer < Baseline drop else tangent >  
 Peak separation: 5

Method : Z:\voasrv\HPCHEM1\MSVOA\_W\Method\SFAMWLM040122SMA.M  
 Title : SFAM01.0

Signal : TIC: VW022369.D\data.ms

peak #	R.T. min	first scan	max scan	last scan	PK TY	peak height	corr. area	corr. % max.	% of total
1	2.355	69	74	82	rVB	137374	217640	17.87%	2.331%
2	2.885	156	161	172	rVB	60470	132556	10.88%	1.420%
3	3.294	225	228	230	rVB4	1655	1254	0.10%	0.013%
4	3.410	246	247	252	rVB5	1744	2429	0.20%	0.026%
5	3.501	258	262	263	rBV4	1696	1730	0.14%	0.019%
6	3.562	270	272	274	rVB3	1407	1109	0.09%	0.012%
7	3.769	304	306	308	rVB3	1609	1238	0.10%	0.013%
8	3.800	308	311	314	rBV5	861	1321	0.11%	0.014%
9	3.934	331	333	336	rBV4	1461	2135	0.18%	0.023%
10	4.025	336	348	361	rVV2	122900	378918	31.11%	4.058%
11	4.135	364	366	370	rVB5	2708	3299	0.27%	0.035%
12	4.410	405	411	417	rVB5	2741	6594	0.54%	0.071%
13	4.458	417	419	421	rBV3	1419	1261	0.10%	0.014%
14	4.568	433	437	441	rVB6	1422	2710	0.22%	0.029%
15	4.794	472	474	479	rVB6	1065	1506	0.12%	0.016%
16	4.891	486	490	491	rBV4	2697	3100	0.25%	0.033%
17	4.922	491	495	503	rVB7	6173	13863	1.14%	0.148%
18	5.050	515	516	520	rVB3	928	1094	0.09%	0.012%
19	5.165	533	535	539	rBV5	1813	1759	0.14%	0.019%
20	5.239	545	547	551	rVB5	973	1217	0.10%	0.013%
21	5.336	561	563	569	rVB7	1548	1924	0.16%	0.021%
22	5.519	590	593	595	rVB4	1013	1194	0.10%	0.013%
23	5.543	595	597	599	rBV3	1419	1471	0.12%	0.016%
24	5.781	633	636	639	rBV5	925	1459	0.12%	0.016%
25	5.946	653	663	671	rBV5	4136	14036	1.15%	0.150%
26	6.117	690	691	694	rVB3	1958	1799	0.15%	0.019%
27	6.153	694	697	698	rBV3	1030	1336	0.11%	0.014%
28	6.287	717	719	721	rBV3	1129	1167	0.10%	0.012%
29	6.312	721	723	727	rVB5	1686	1818	0.15%	0.019%
30	6.629	772	775	777	rBV4	784	1144	0.09%	0.012%
31	6.659	779	780	787	rVB7	1371	1851	0.15%	0.020%
32	6.903	817	820	823	rBV5	1591	2123	0.17%	0.023%
33	6.994	833	835	837	rVB3	1426	1095	0.09%	0.012%
34	7.031	837	841	842	rBV3	1762	2054	0.17%	0.022%
35	7.080	842	849	864	rVV	46128	130723	10.73%	1.400%
36	7.250	874	877	886	rVB3	4796	11930	0.98%	0.128%

Data Path : Z:\voasrv\HPCHEM1\MSVOA\_W\Data\VW040122\  
 Data File : VW022369.D  
 Acq On : 01 Apr 2022 16:19  
 Operator : SY/VA  
 Sample : N2225-02  
 Misc : 7.22g/10mL/MSVOA\_W/SOIL  
 ALS Vial : 1 Sample Multiplier: 1

Instrument :  
 MSVOA\_W  
 ClientSampleId :  
 BGQD1

Integration Parameters: LSCINT.P

Integrator: RTE  
 Smoothing : OFF  
 Sampling : 1  
 Start Thrs: 0.2  
 Stop Thrs : 0

Filtering: 5  
 Min Area: 0 % of largest Peak  
 Max Peaks: 100  
 Peak Location: TOP

If leading or trailing edge < 100 prefer < Baseline drop else tangent >  
 Peak separation: 5

Method : Z:\voasrv\HPCHEM1\MSVOA\_W\Method\SFAMWLM040122SMA.M  
 Title : SFAM01.0

37	7.500	915	918	919	rBV3	1403	1224	0.10%	0.013%
38	7.531	919	923	924	rBV3	2377	3185	0.26%	0.034%
39	7.647	933	942	957	rVB	193553	475248	39.02%	5.090%
40	7.763	959	961	966	rVB6	1593	2227	0.18%	0.024%
41	7.866	977	978	981	rVB2	1371	1098	0.09%	0.012%
42	7.897	981	983	984	rBV2	1904	1636	0.13%	0.018%
43	7.927	984	988	993	rVB8	1613	2675	0.22%	0.029%
44	8.074	1008	1012	1015	rVB6	1054	1605	0.13%	0.017%
45	8.122	1015	1020	1021	rBV5	977	1347	0.11%	0.014%
46	8.153	1021	1025	1031	rBV7	2318	5052	0.41%	0.054%
47	8.275	1034	1045	1058	rBV2	397201	1218079	100.00%	13.046%
48	8.421	1064	1069	1078	rVB	8395	19428	1.59%	0.208%
49	8.689	1108	1113	1119	rVB7	3973	8381	0.69%	0.090%
50	8.842	1128	1138	1154	rBV	319072	645177	52.97%	6.910%
51	9.025	1166	1168	1171	rBV4	1484	2232	0.18%	0.024%
52	9.055	1171	1173	1175	rVB3	2282	2096	0.17%	0.022%
53	9.092	1175	1179	1183	rBV6	2239	4400	0.36%	0.047%
54	9.274	1200	1209	1220	rBV	275272	557005	45.73%	5.966%
55	9.488	1243	1244	1247	rVV3	1310	1119	0.09%	0.012%
56	9.518	1247	1249	1251	rVV3	1557	1262	0.10%	0.014%
57	9.646	1268	1270	1272	rBV3	1402	1737	0.14%	0.019%
58	9.768	1286	1290	1295	rVB7	1581	2895	0.24%	0.031%
59	10.037	1327	1334	1345	rBV	177016	325478	26.72%	3.486%
60	10.122	1345	1348	1350	rBV4	1351	1343	0.11%	0.014%
61	10.323	1370	1381	1387	rBV	595538	1037132	85.14%	11.108%
62	10.384	1387	1391	1399	rVV	38392	73478	6.03%	0.787%
63	10.469	1399	1405	1408	rVV6	3378	6318	0.52%	0.068%
64	10.536	1413	1416	1417	rVV3	1539	1898	0.16%	0.020%
65	10.579	1417	1423	1432	rVV	122079	208935	17.15%	2.238%
66	10.701	1436	1443	1448	rBV3	10366	18549	1.52%	0.199%
67	10.756	1450	1452	1455	rVB3	1480	1560	0.13%	0.017%
68	10.780	1455	1456	1460	rVB4	1856	1765	0.14%	0.019%
69	10.817	1460	1462	1463	rBV2	1704	1642	0.13%	0.018%
70	10.921	1473	1479	1491	rBV	193370	329314	27.04%	3.527%
71	11.140	1513	1515	1517	rBV3	1086	1305	0.11%	0.014%
72	11.183	1518	1522	1523	rVB3	2122	2891	0.24%	0.031%
73	11.238	1525	1531	1534	rBV8	1672	3372	0.28%	0.036%
74	11.359	1550	1551	1555	rBV4	1000	1198	0.10%	0.013%
75	11.408	1557	1559	1563	rVV5	1311	1740	0.14%	0.019%
76	11.548	1581	1582	1585	rVB2	1799	1763	0.14%	0.019%

Data Path : Z:\voasrv\HPCHEM1\MSVOA\_W\Data\VW040122\  
 Data File : VW022369.D  
 Acq On : 01 Apr 2022 16:19  
 Operator : SY/VA  
 Sample : N2225-02  
 Misc : 7.22g/10mL/MSVOA\_W/SOIL  
 ALS Vial : 1 Sample Multiplier: 1

Instrument :  
 MSVOA\_W  
 ClientSampleId :  
 BGQD1

Integration Parameters: LSCINT.P

Integrator: RTE  
 Smoothing : OFF Filtering: 5  
 Sampling : 1 Min Area: 0 % of largest Peak  
 Start Thrs: 0.2 Max Peaks: 100  
 Stop Thrs : 0 Peak Location: TOP

If leading or trailing edge < 100 prefer < Baseline drop else tangent >  
 Peak separation: 5

Method : Z:\voasrv\HPCHEM1\MSVOA\_W\Method\SFAMWLM040122SMA.M  
 Title : SFAM01.0

77	11.628	1585	1595	1604	rBV	486775	831720	68.28%	8.908%
78	11.689	1604	1605	1608	rBV3	1096	1235	0.10%	0.013%
79	11.841	1624	1630	1636	rBV10	2773	7094	0.58%	0.076%
80	11.926	1642	1644	1645	rBV	1878	1492	0.12%	0.016%
81	11.939	1645	1646	1649	rVV2	1692	1643	0.13%	0.018%
82	12.006	1655	1657	1659	rVV3	1593	1357	0.11%	0.015%
83	12.329	1709	1710	1712	rBV2	1532	1487	0.12%	0.016%
84	12.603	1748	1755	1762	rBV	220856	376399	30.90%	4.031%
85	12.689	1762	1769	1777	rBV	244312	401004	32.92%	4.295%
86	12.865	1795	1798	1799	rBV3	1438	1740	0.14%	0.019%
87	12.932	1805	1809	1810	rBV4	3129	4431	0.36%	0.047%
88	13.012	1820	1822	1824	rBV3	1420	1120	0.09%	0.012%
89	13.188	1848	1851	1855	rVB4	5661	7867	0.65%	0.084%
90	13.249	1855	1861	1863	rBV7	3445	6116	0.50%	0.066%
91	13.402	1878	1886	1891	rBV5	5552	11229	0.92%	0.120%
92	13.469	1893	1897	1900	rBV5	4698	7700	0.63%	0.082%
93	13.554	1905	1911	1918	rBV	543813	854241	70.13%	9.149%
94	13.762	1940	1945	1949	rBV7	3775	8249	0.68%	0.088%
95	13.853	1953	1960	1967	rBV	498479	847269	69.56%	9.074%
96	14.066	1990	1995	2000	rVB	12297	20579	1.69%	0.220%
97	15.182	2174	2178	2182	rBV6	2188	4552	0.37%	0.049%
98	15.926	2298	2300	2302	rBV3	1556	1807	0.15%	0.019%
99	16.548	2400	2402	2403	rBV2	2017	1571	0.13%	0.017%
100	16.700	2425	2427	2430	rBV4	1857	2305	0.19%	0.025%

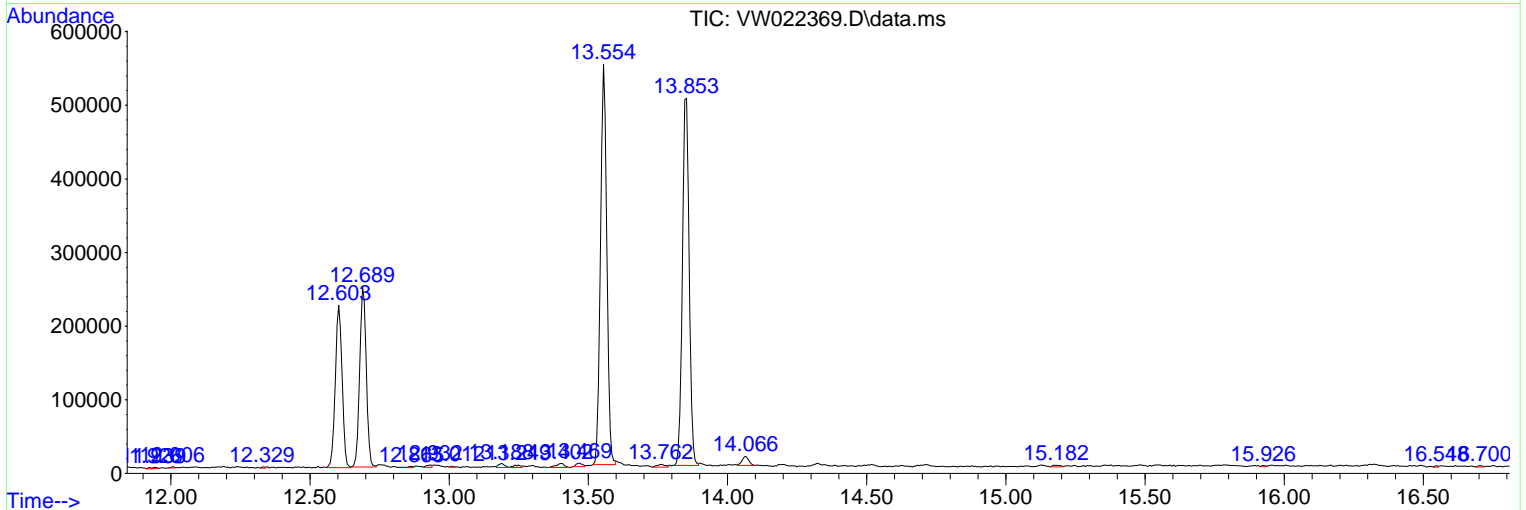
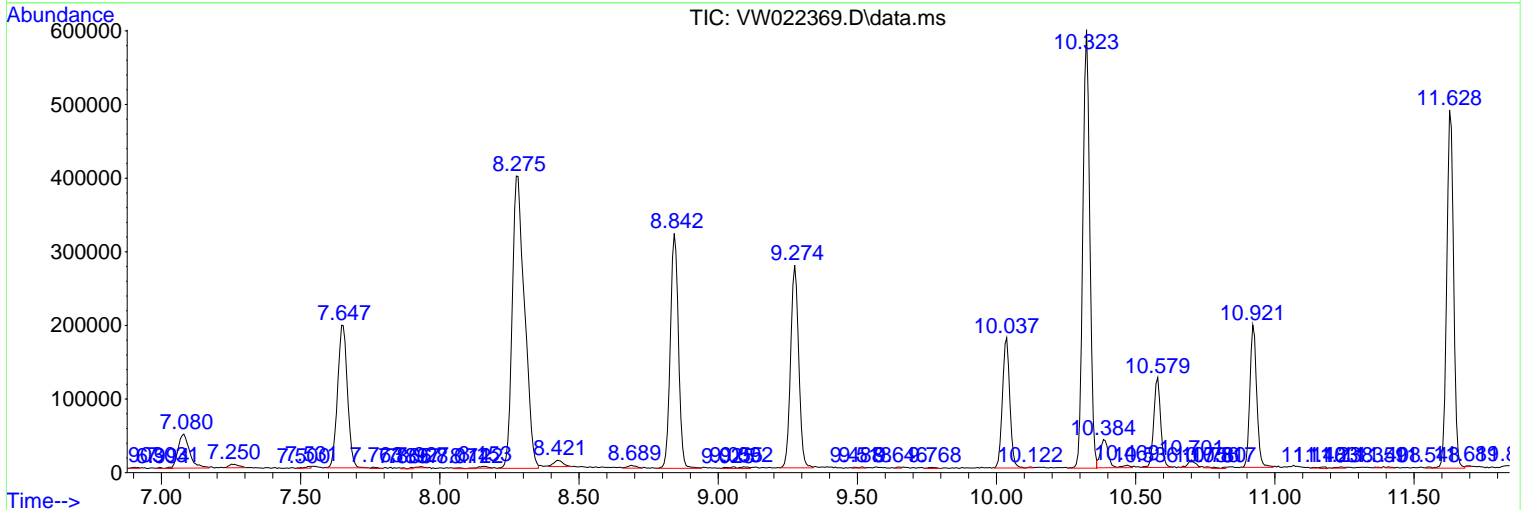
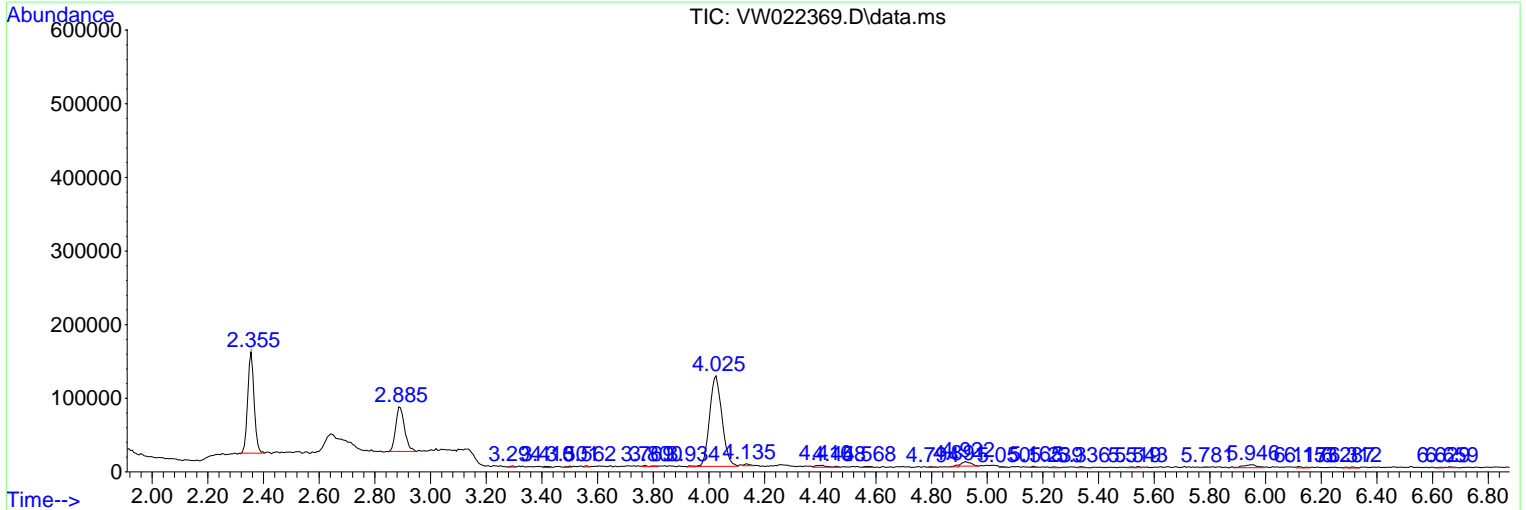
Sum of corrected areas: 9336853

Data Path : Z:\voasrv\HPCHEM1\MSVOA\_W\Data\VW040122\  
 Data File : VW022369.D  
 Acq On : 01 Apr 2022 16:19  
 Operator : SY/VA  
 Sample : N2225-02  
 Misc : 7.22g/10mL/MSVOA\_W/SOIL  
 ALS Vial : 1 Sample Multiplier: 1

Instrument :  
 MSVOA\_W  
 ClientSampleId :  
 BGQD1

Quant Method : Z:\voasrv\HPCHEM1\MSVOA\_W\Method\SFAMWLM040122SMA.M  
 Quant Title : SFAM01.0

TIC Library : C:\Database\NIST20.L  
 TIC Integration Parameters: LSCINT.P



Library Search Compound Report

Data Path : Z:\voasrv\HPCHEM1\MSVOA\_W\Data\VW040122\  
Data File : VW022369.D  
Acq On : 01 Apr 2022 16:19  
Operator : SY/VA  
Sample : N2225-02  
Misc : 7.22g/10mL/MSVOA\_W/SOIL  
ALS Vial : 1 Sample Multiplier: 1

Instrument :  
MSVOA\_W  
ClientSampleId :  
BGQD1

Quant Method : Z:\voasrv\HPCHEM1\MSVOA\_W\Method\SFAMWLM040122SMA.M  
Quant Title : SFAM01.0

TIC Library : C:\Database\NIST0.L  
TIC Integration Parameters: LSCINT.P

No Library Search Compounds Detected

\*\*\*\*\*

Data Path : Z:\voasrv\HPCHEM1\MSVOA\_W\Data\VW040122\  
Data File : VW022369.D  
Acq On : 01 Apr 2022 16:19  
Operator : SY/VA  
Sample : N2225-02  
Misc : 7.22g/10mL/MSVOA\_W/SOIL  
ALS Vial : 1 Sample Multiplier: 1

Instrument :  
MSVOA\_W  
ClientSampleId :  
BGQD1

Quant Method : Z:\voasrv\HPCHEM1\MSVOA\_W\Method\SFAMWLM040122SMA.M  
Quant Title : SFAM01.0

TIC Library : C:\Database\NIST0.L  
TIC Integration Parameters: LSCINT.P

TIC Top Hit name	RT	EstConc	Units	Response	--Internal Standard--			
					#	RT	Resp	Conc

---