

Data Path : Z:\VOASRV\HPCHEM1\MSVOA W\DATA\VW040519\
 Data File : VW009709.D
 Acq On : 05 Apr 2019 03:53
 Operator : SY/VA
 Sample : K2276-07
 Misc : 5.13G/10ML/MSVOA W/SOIL
 ALS Vial : 1 Sample Multiplier: 1

Instrument :
 MSVOA_W
ClientSampled :
 BF134

Manual Integrations
APPROVED
 MMDadoda
 4/8/2019 3:32:44 AM

Quant Time: Apr 05 07:32:29 2019
 Quant Method : Z:\VOASRV\HPCHEM1\MSVOA_W\METHOD\SOM2WLM040319S.M
 Quant Title : VOC Analysis
 QLast Update : Fri Apr 05 05:32:00 2019
 Response via : Initial Calibration

Internal Standards	R.T.	QIon	Response	Conc	Units	Dev(Min)
1) 1,4-Difluorobenzene	8.84	114	393772	25.00	ug/L	0.00
28) Chlorobenzene-d5	11.63	117	379956	25.00	ug/L	0.00
60) 1,4-Dichlorobenzene-d4	13.56	152	162945	25.00	ug/L	0.00

System Monitoring Compounds

4) Vinyl Chloride-d3	2.35	65	145751	28.29	ug/L	0.00
Spiked Amount	25.000	Range	30 - 150	Recovery	=	113.16%
7) Chloroethane-d5	2.89	69	134835	28.56	ug/L	0.00
Spiked Amount	25.000	Range	30 - 150	Recovery	=	114.24%
10) 1,1-Dichloroethene-d2	4.01	63	241628m	21.80	ug/L	-0.01
Spiked Amount	25.000	Range	45 - 110	Recovery	=	87.20%
20) 2-Butanone-d5	7.07	46	103510	61.87	ug/L	0.00
Spiked Amount	50.000	Range	20 - 135	Recovery	=	123.74%
24) Chloroform-d	7.64	84	307067	28.58	ug/L	0.00
Spiked Amount	25.000	Range	40 - 150	Recovery	=	114.32%
26) 1,2-Dichloroethane-d4	8.30	65	192770	29.22	ug/L	0.00
Spiked Amount	25.000	Range	70 - 130	Recovery	=	116.88%
29) Benzene-d6	8.27	84	587223	29.44	ug/L	0.00
Spiked Amount	25.000	Range	20 - 135	Recovery	=	117.76%
33) 1,2-Dichloropropane-d6	9.27	67	180107	29.24	ug/L	0.00
Spiked Amount	25.000	Range	70 - 120	Recovery	=	116.96%
37) Toluene-d8	10.32	98	525026	28.47	ug/L	0.00
Spiked Amount	25.000	Range	30 - 130	Recovery	=	113.88%
38) trans-1,3-Dichloropropene-	10.58	79	79279	26.98	ug/L	0.00
Spiked Amount	25.000	Range	30 - 135	Recovery	=	107.92%
39) 2-Hexanone-d5	10.93	63	70566	60.77	ug/L	0.00
Spiked Amount	50.000	Range	20 - 135	Recovery	=	121.54%
48) 1,1,2,2-Tetrachloroethane-	12.69	84	159622	27.87	ug/L	0.00
Spiked Amount	25.000	Range	45 - 120	Recovery	=	111.48%
61) 1,2-Dichlorobenzene-d4	13.86	152	183856	32.16	ug/L	0.00
Spiked Amount	25.000	Range	75 - 120	Recovery	=	128.64%#

Target Compounds	R.T.	QIon	Response	Conc	Units	Ovalue
16) Methylene chloride	4.91	84	9447m	1.360	ug/L	

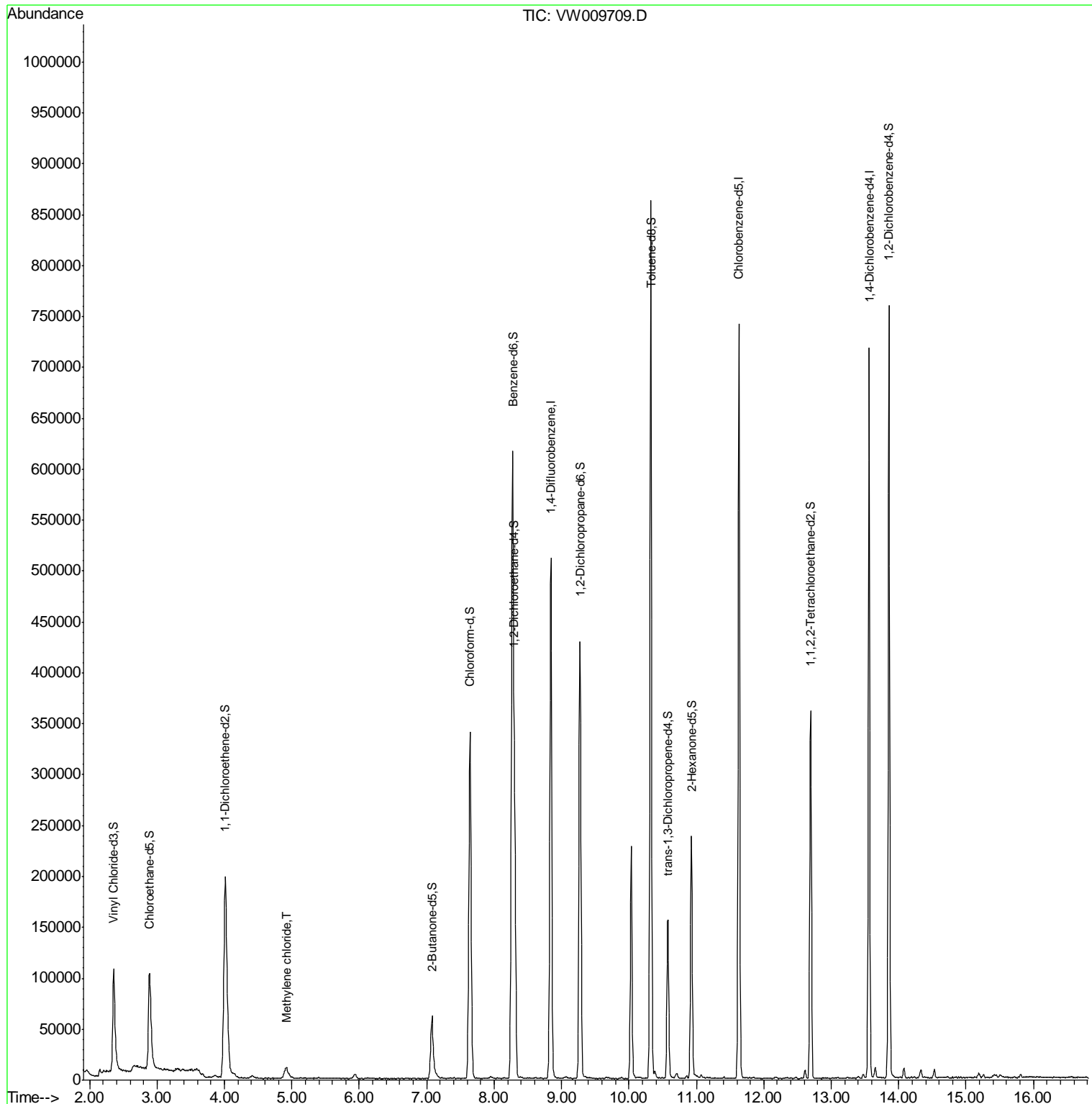
(#) = qualifier out of range (m) = manual integration (+) = signals summed

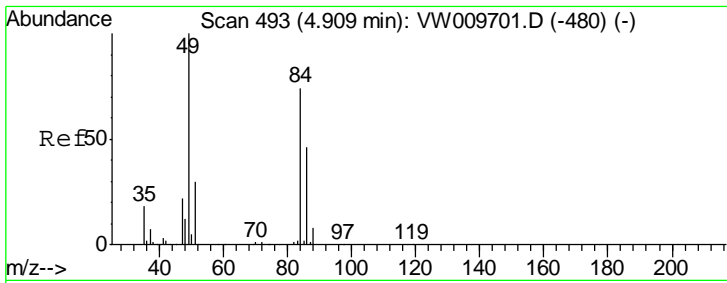
Data Path : Z:\VOASRV\HPCHEM1\MSVOA W\DATA\VW040519\
 Data File : VW009709.D
 Acq On : 05 Apr 2019 03:53
 Operator : SY/VA
 Sample : K2276-07
 Misc : 5.13G/10ML/MSVOA W/SOIL
 ALS Vial : 1 Sample Multiplier: 1

Instrument :
 MSVOA_W
Client Sampled :
 BF134

Manual Integrations
APPROVED
 MMDadoda
 4/8/2019 3:32:44 AM

Quant Time: Apr 05 07:32:29 2019
 Quant Method : Z:\VOASRV\HPCHEM1\MSVOA_W\METHOD\SOM2WLM040319S.M
 Quant Title : VOC Analysis
 QLast Update : Fri Apr 05 05:32:00 2019
 Response via : Initial Calibration





#16
 Methylene chloride
 Concen: 1.360 ug/L m
 RT: 4.91 min Scan# 493
 Delta R.T. -0.01 min
 Lab File: VW009709.D
 Acq: 05 Apr 2019 03:53

Instrument :
 MSVOA_W
ClientSampled :
 BF134

Tot Ion	84	Resp	9447
Ion	Ratio	Lower	Upper
84	100		
49	173.9	98.3	182.5
86	64.0	46.4	86.2

Manual Integrations
APPROVED
 MMDadoda
 4/8/2019 3:32:44 AM

