

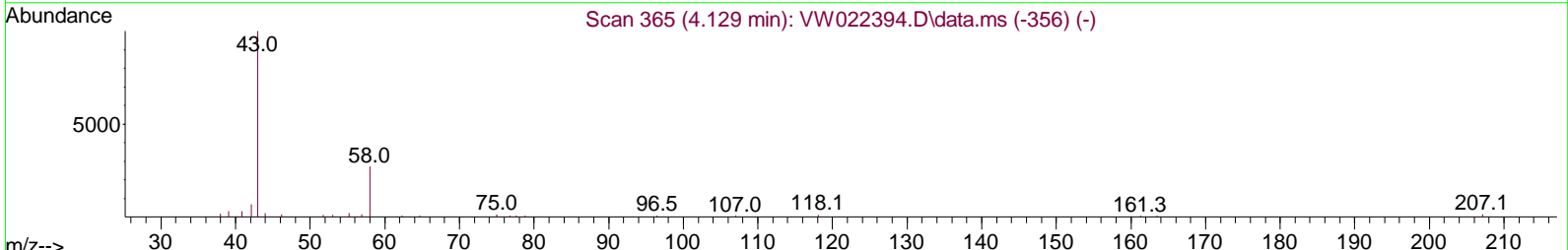
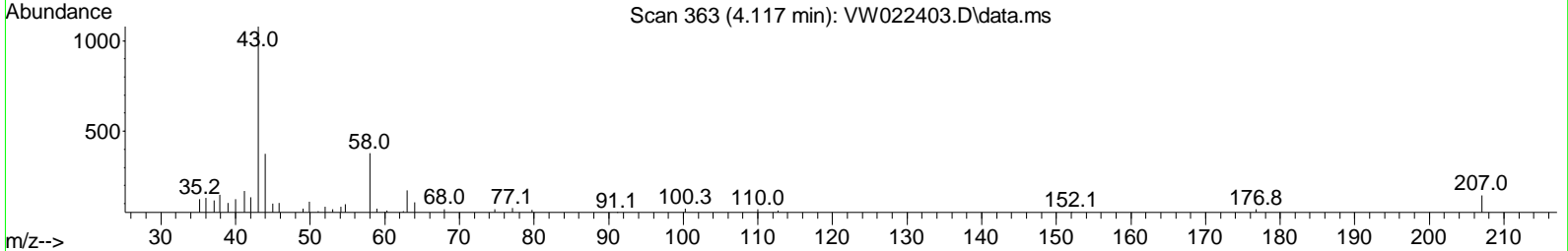
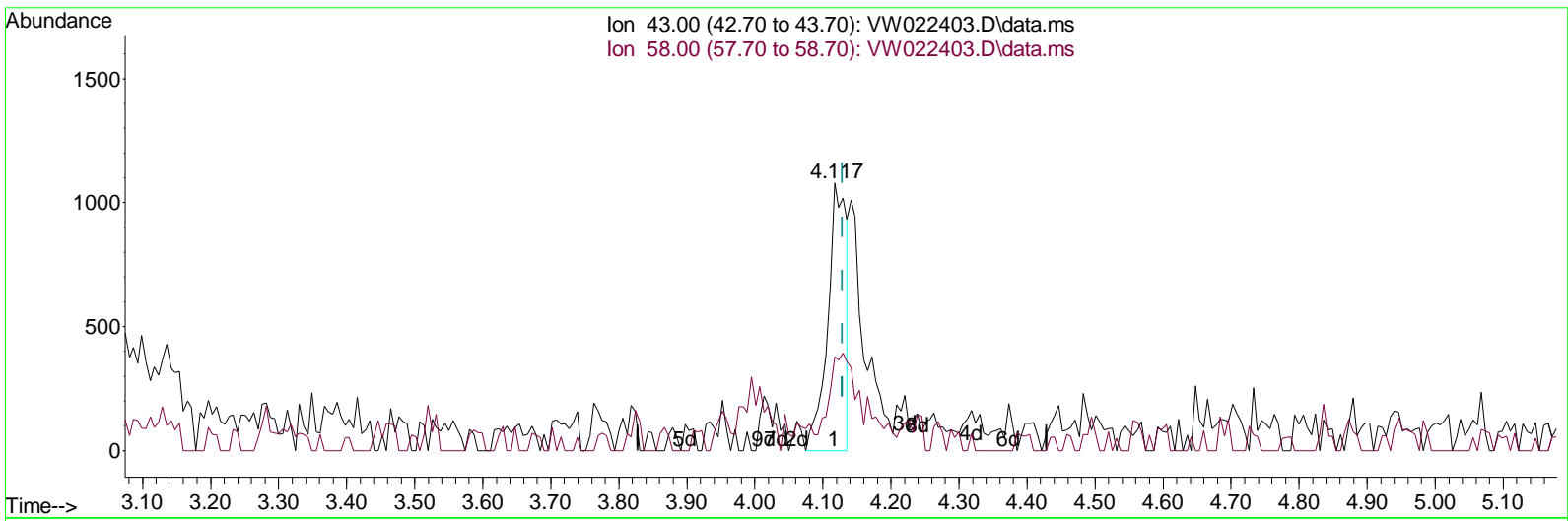
Data Path : Z:\voasrv\HPCHEM1\MSVOA\_W\Data\VW040522\  
 Data File : VW022403.D  
 Acq On : 05 Apr 2022 18:39  
 Operator : SY/VA  
 Sample : N2262-06  
 Mi sc : 6.72g/10mL/MSVOA\_W/SOIL  
 ALS Vial : 1 Sample Multiplier: 1

**Instrument :**  
 MSVOA\_W  
**ClientSampleId :**  
 EW6L0

**Manual IntegrationsAPPROVED**

Reviewed By :Semsettin Yesilyurt 04/06/2022  
 Supervised By :Mahesh Dadoda 04/07/2022

Quant Time: Apr 06 02:15:41 2022  
 Quant Method : Z:\voasrv\HPCHEM1\MSVOA\_W\Method\SFAMLM040122SMA.M  
 Quant Title : SFAM01.0  
 QLast Update : Wed Apr 06 02:13:06 2022  
 Response via : Initial Calibration



TIC: VW022403.D\data.ms

(13) Acetone (T)

4.117min (-0.012) 5.10 ug/L

response	2080	
Ion	Exp%	Act%
43.00	100.00	100.00
58.00	34.60	16.44
0.00	0.00	0.00
0.00	0.00	0.00

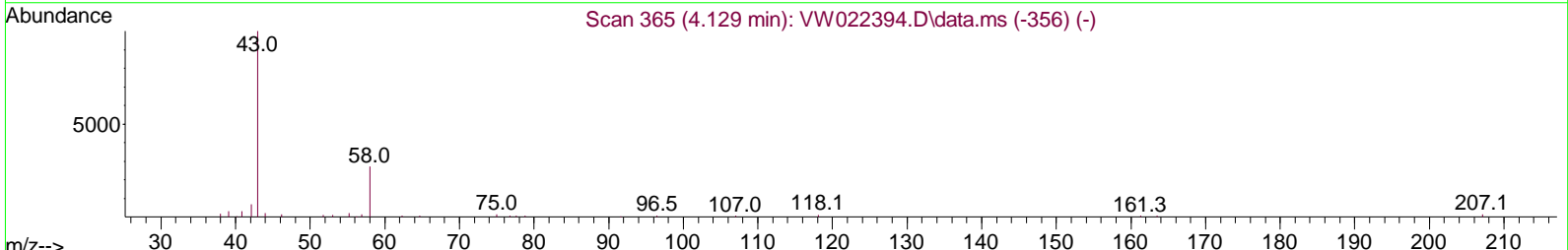
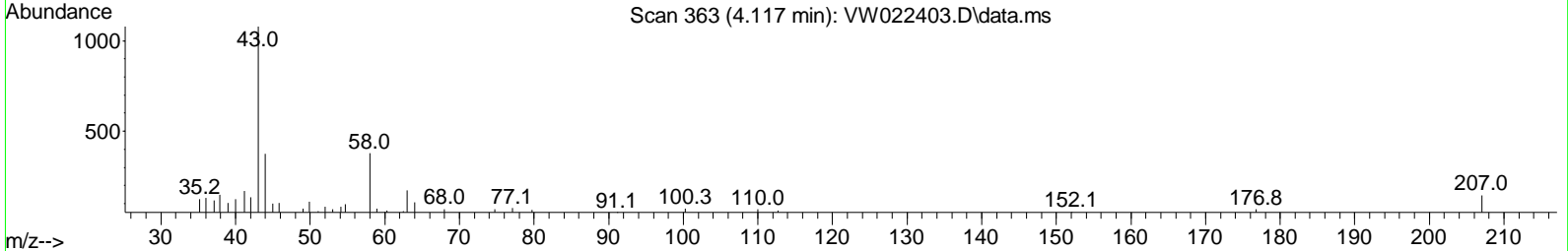
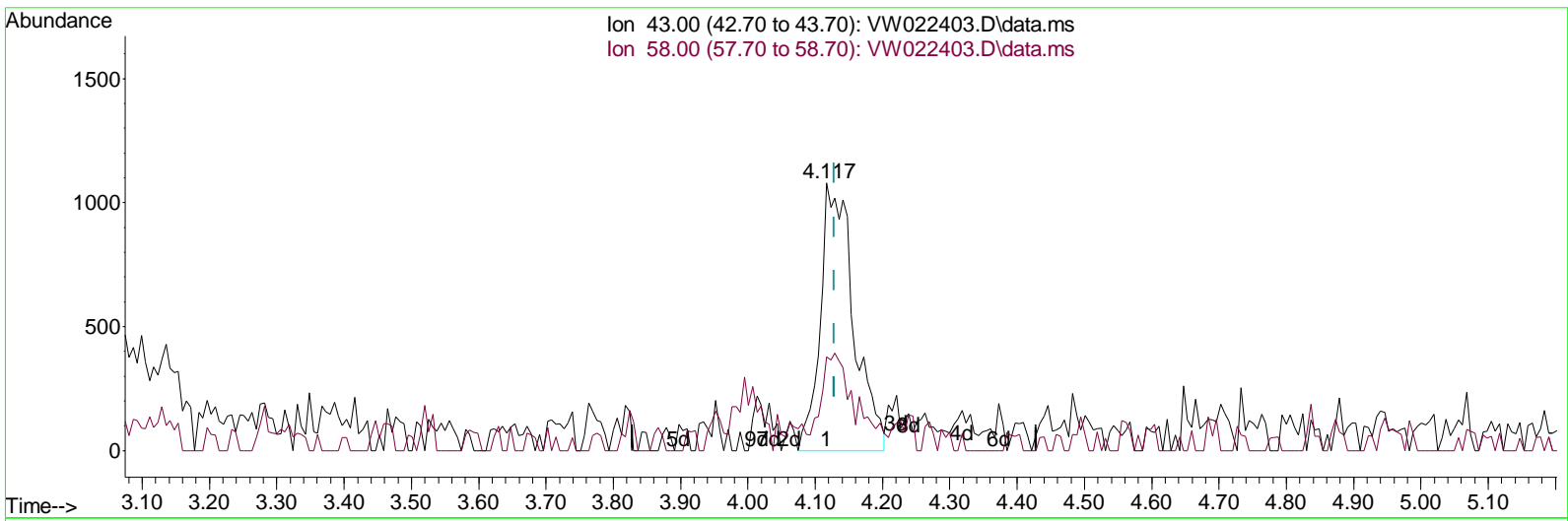
Data Path : Z:\voasrv\HPCHEM1\MSVOA\_W\Data\VW040522\  
 Data File : VW022403.D  
 Acq On : 05 Apr 2022 18:39  
 Operator : SY/VA  
 Sample : N2262-06  
 Mi sc : 6.72g/10mL/MSVOA\_W/SOIL  
 ALS Vial : 1 Sample Multiplier: 1

**Instrument :**  
 MSVOA\_W  
**ClientSampleId :**  
 EW6L0

**Manual IntegrationsAPPROVED**

Reviewed By :Semsettin Yesilyurt 04/06/2022  
 Supervised By :Mahesh Dadoda 04/07/2022

Quant Time: Apr 06 02:15:41 2022  
 Quant Method : Z:\voasrv\HPCHEM1\MSVOA\_W\Method\SFAMLM040122SMA.M  
 Quant Title : SFAM01.0  
 QLast Update : Wed Apr 06 02:13:06 2022  
 Response via : Initial Calibration



TIC: VW022403.D\data.ms

(13) Acetone (T)

4.117min (-0.012) 9.06 ug/L m

response	3694
Ion	Exp% Act%
43.00	100.00 100.00
58.00	34.60 9.26
0.00	0.00 0.00
0.00	0.00 0.00

Data Path : Z:\voasrv\HPCHEM1\MSVOA\_W\Data\W040522\  
 Data File : W022403.D  
 Acq On : 05 Apr 2022 18:39  
 Operator : SY/VA  
 Sample : N2262-06  
 Mi sc : 6.72g/10mL/MSVOA\_W/SOIL  
 ALS Vial : 1 Sample Multi plier: 1

**Instrument :**  
 MSVOA\_W  
**ClientSampleId :**  
 EW6L0

**Manual IntegrationsAPPROVED**

Reviewed By :Semsettin Yesilyurt 04/06/2022  
 Supervised By :Mahesh Dadoda 04/07/2022

Quant Time: Apr 06 02:15:41 2022  
 Quant Method : Z:\voasrv\HPCHEM1\MSVOA\_W\Method\SFAMWLM040122SMA.M  
 Quant Title : SFAM01.0  
 QLast Update : Wed Apr 06 02:13:06 2022  
 Response via : Initial Calibration

Compound	R.T.	QI on	Response	Conc	Units	Dev(Min)
<b>Internal Standards</b>						
1) 1,4-Di fluorobenzene	8.842	114	148746	25.000	ug/L	0.00
28) Chlorobenzene-d5	11.628	117	141954	25.000	ug/L	0.00
58) 1,4-Di chlorobenzene-d4	13.554	152	63899	25.000	ug/L	0.00
<b>System Monitoring Compounds</b>						
4) Vinyl Chloride-d3	2.355	65	86640	35.540	ug/L	0.00
Spi ked Amount 25.000	Range 30	- 150	Recovery = 142.160%			
7) Chloroethane-d5	2.885	69	58616	40.277	ug/L	0.00
Spi ked Amount 25.000	Range 30	- 150	Recovery = 161.120%#			
11) 1,1-Di chloroethene-d2	4.019	63	59859	16.549	ug/L	0.00
Spi ked Amount 25.000	Range 45	- 110	Recovery = 66.200%			
21) 2-Butanone-d5	7.080	46	36992	62.101	ug/L	0.00
Spi ked Amount 50.000	Range 20	- 135	Recovery = 124.200%			
24) Chloroform-d	7.647	84	104197	25.123	ug/L	0.00
Spi ked Amount 25.000	Range 40	- 150	Recovery = 100.480%			
26) 1,2-Di chloroethane-d4	8.305	65	67228	27.413	ug/L	0.00
Spi ked Amount 25.000	Range 70	- 130	Recovery = 109.640%			
32) Benzene-d6	8.275	84	215306	27.620	ug/L	0.00
Spi ked Amount 25.000	Range 20	- 135	Recovery = 110.480%			
36) 1,2-Di chloropropane-d6	9.275	67	63607	27.179	ug/L	0.00
Spi ked Amount 25.000	Range 70	- 120	Recovery = 108.720%			
41) Toluene-d8	10.323	98	211049	28.458	ug/L	0.00
Spi ked Amount 25.000	Range 30	- 130	Recovery = 113.840%			
43) trans-1,3-Di chloroprop.	10.579	79	28054	23.838	ug/L	0.00
Spi ked Amount 25.000	Range 30	- 135	Recovery = 95.360%			
47) 2-Hexanone-d5	10.921	63	30626	63.885	ug/L	0.00
Spi ked Amount 50.000	Range 20	- 135	Recovery = 127.780%			
56) 1,1,2,2-Tetrachloroeth.	12.689	84	58279	29.519	ug/L	0.00
Spi ked Amount 25.000	Range 45	- 120	Recovery = 118.080%			
66) 1,2-Di chlorobenzene-d4	13.853	152	60095	29.133	ug/L	0.00
Spi ked Amount 25.000	Range 75	- 120	Recovery = 116.520%			
<b>Target Compounds</b>						
13) Acetone	4.117	43	3694m	9.056	ug/L	Qval ue

(#) = qual i fi er out of range (m) = manual i ntegrati on (+) = signal s summed

Data Path : Z:\voasrv\HPCHEM1\MSVOA\_W\Data\VW040522\  
 Data File : VW022403.D  
 Acq On : 05 Apr 2022 18:39  
 Operator : SY/VA  
 Sample : N2262-06  
 Misc : 6.72g/10mL/MSVOA\_W/SOIL  
 ALS Vial : 1 Sample Multiplier: 1

**Instrument :**  
 MSVOA\_W  
**ClientSampleId :**  
 EW6L0

**Manual IntegrationsAPPROVED**

Reviewed By :Semsettin Yesilyurt 04/06/2022  
 Supervised By :Mahesh Dadoda 04/07/2022

Quant Time: Apr 06 02:15:41 2022  
 Quant Method : Z:\voasrv\HPCHEM1\MSVOA\_W\Method\SFAMLM040122SMA.M  
 Quant Title : SFAM01.0  
 QLast Update : Wed Apr 06 02:13:06 2022  
 Response via : Initial Calibration

