

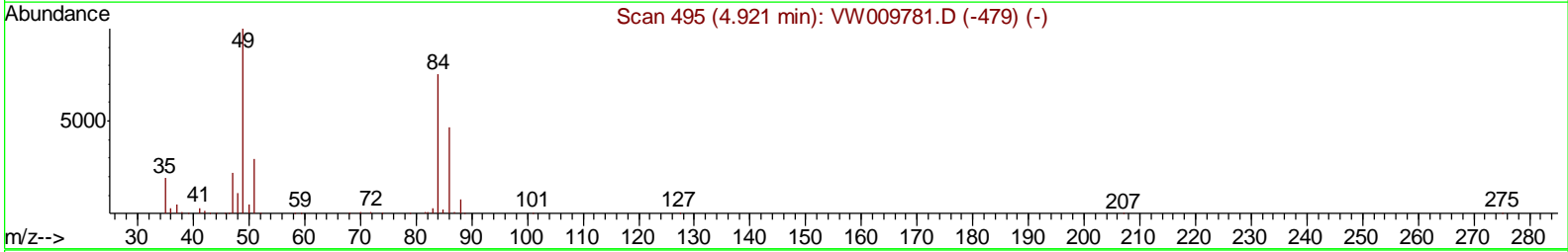
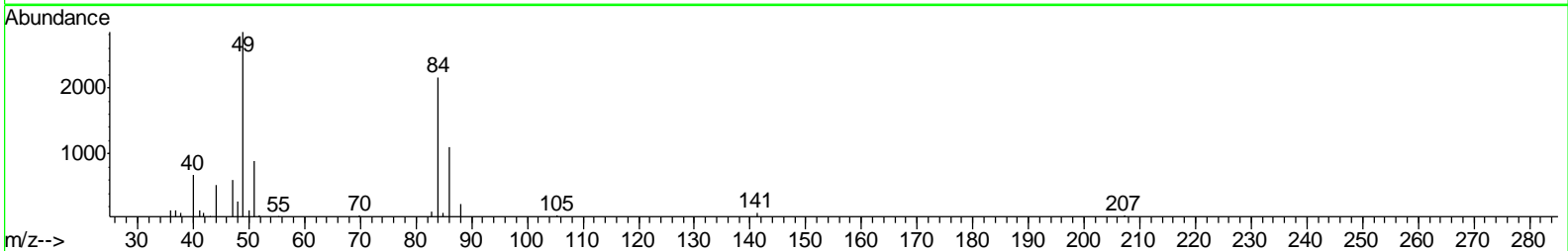
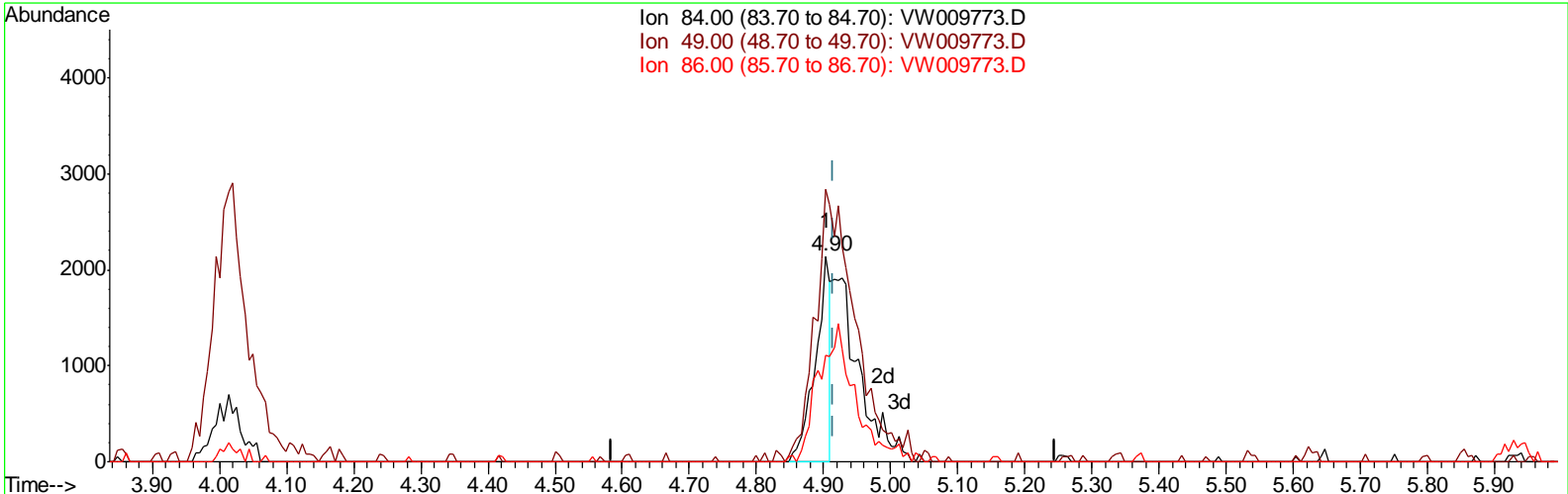
Data Path : Z:\VOASRV\HPCHEM1\MSVOA\_W\DATA\VW040619\  
 Data File : VW009773.D  
 Acq On : 06 Apr 2019 15:29  
 Operator : SY/VA  
 Sample : K2327-06  
 Misc : 7.46G/10ML/MSVOA\_W/SOIL  
 ALS Vial : 1 Sample Multiplier: 1

Instrument :  
 MSVOA\_W  
 ClientSampled :  
 BF2S3

Manual Integrations  
 APPROVED

MMDadoda  
 4/11/2019 11:43:05 AM

Quant Time: Apr 07 04:00:46 2019  
 Quant Method : Z:\VOASRV\HPCHEM1\MSVOA\_W\METHOD\SOM2WLM040319S.M  
 Quant Title : VOC Analysis  
 QLast Update : Sun Apr 07 03:56:20 2019  
 Response via : Initial Calibration



TIC: VW009773.D

(16) Methylene chloride (T)

4.903min (-0.012) 0.41ug/L

response 3371

Ion	Exp%	Act%
84.00	100	100
49.00	140.40	132.42
86.00	66.30	51.73
0.00	0.00	0.00

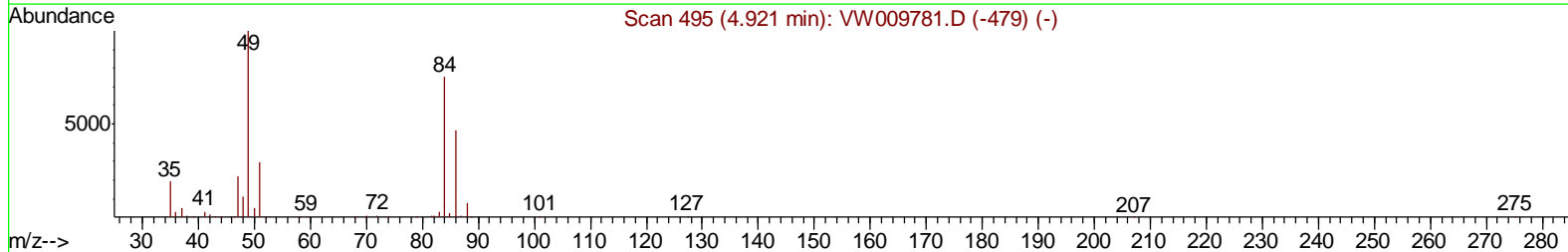
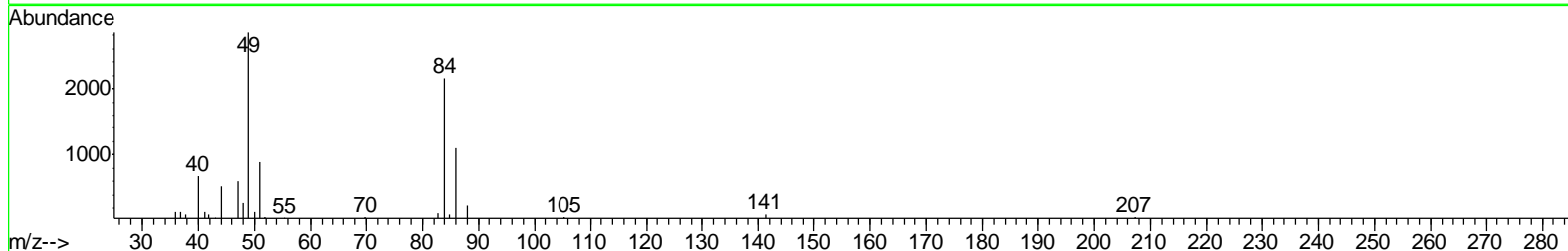
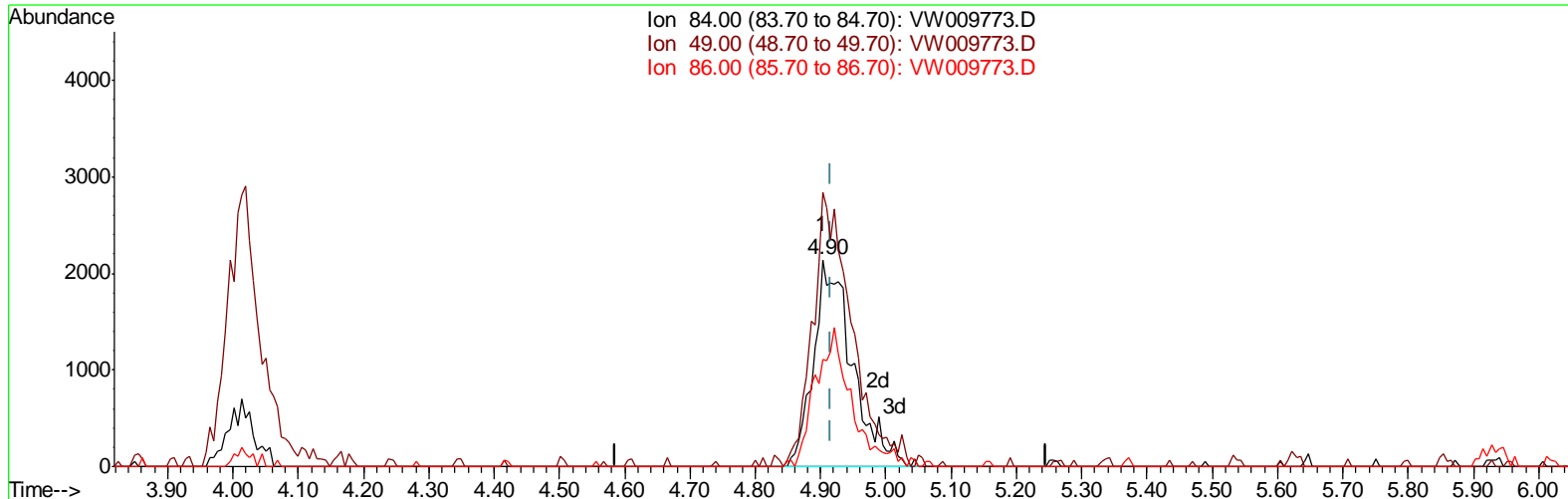
Data Path : Z:\VOASRV\HPCHEM1\MSVOA\_W\DATA\VW040619\  
 Data File : VW009773.D  
 Acq On : 06 Apr 2019 15:29  
 Operator : SY/VA  
 Sample : K2327-06  
 Misc : 7.46G/10ML/MSVOA\_W/SOIL  
 ALS Vial : 1 Sample Multiplier: 1

Instrument :  
 MSVOA\_W  
 ClientSampled :  
 BF2S3

Manual Integrations  
 APPROVED

MMDadoda  
 4/11/2019 11:43:05 AM

Quant Time: Apr 07 04:00:46 2019  
 Quant Method : Z:\VOASRV\HPCHEM1\MSVOA\_W\METHOD\SOM2WLM040319S.M  
 Quant Title : VOC Analysis  
 QLast Update : Sun Apr 07 03:56:20 2019  
 Response via : Initial Calibration



TIC: VW009773.D

(16) Methylene chloride (T)  
 4.903min (-0.012) 1.07ug/L m  
 response 8796

Ion	Exp%	Act%
84.00	100	100
49.00	140.40	132.42
86.00	66.30	51.73
0.00	0.00	0.00

Data Path : Z:\VOASRV\HPCHEM1\MSVOA\_W\DATA\VW040619\  
 Data File : VW009773.D  
 Acq On : 06 Apr 2019 15:29  
 Operator : SY/VA  
 Sample : K2327-06  
 Misc : 7.46G/10ML/MSVOA\_W/SOIL  
 ALS Vial : 1 Sample Multiplier: 1

Instrument :  
 MSVOA\_W  
 ClientSampled :  
 BF2S3

Manual Integrations  
 APPROVED

MMDadoda  
 4/11/2019 11:43:05 AM

Quant Time: Apr 07 06:14:41 2019  
 Quant Method : Z:\VOASRV\HPCHEM1\MSVOA\_W\METHOD\SOM2WLM040319S.M  
 Quant Title : VOC Analysis  
 QLast Update : Sun Apr 07 03:56:20 2019  
 Response via : Initial Calibration

Internal Standards	R.T.	QIon	Response	Conc	Units	Dev(Min)
1) 1,4-Difluorobenzene	8.84	114	466400	25.00	ug/L	0.00
28) Chlorobenzene-d5	11.63	117	439581	25.00	ug/L	0.00
60) 1,4-Dichlorobenzene-d4	13.56	152	176437	25.00	ug/L	0.00

## System Monitoring Compounds

4) Vinyl Chloride-d3	2.35	65	157612	25.82	ug/L	0.00
Spiked Amount	25.000	Range	30 - 150	Recovery	=	103.28%
7) Chloroethane-d5	2.89	69	142657	25.51	ug/L	0.00
Spiked Amount	25.000	Range	30 - 150	Recovery	=	102.04%
10) 1,1-Dichloroethene-d2	4.01	63	271041	20.65	ug/L	0.00
Spiked Amount	25.000	Range	45 - 110	Recovery	=	82.60%
20) 2-Butanone-d5	7.07	46	94239	47.56	ug/L	0.00
Spiked Amount	50.000	Range	20 - 135	Recovery	=	95.12%
24) Chloroform-d	7.65	84	355662	27.95	ug/L	0.00
Spiked Amount	25.000	Range	40 - 150	Recovery	=	111.80%
26) 1,2-Dichloroethane-d4	8.30	65	212214	27.16	ug/L	0.00
Spiked Amount	25.000	Range	70 - 130	Recovery	=	108.64%
29) Benzene-d6	8.27	84	670539	29.06	ug/L	0.00
Spiked Amount	25.000	Range	20 - 135	Recovery	=	116.24%
33) 1,2-Dichloropropane-d6	9.27	67	205340	28.81	ug/L	0.00
Spiked Amount	25.000	Range	70 - 120	Recovery	=	115.24%
37) Toluene-d8	10.32	98	602437	28.24	ug/L	0.00
Spiked Amount	25.000	Range	30 - 130	Recovery	=	112.96%
38) trans-1,3-Dichloropropene-	10.58	79	86269	25.38	ug/L	0.00
Spiked Amount	25.000	Range	30 - 135	Recovery	=	101.52%
39) 2-Hexanone-d5	10.93	63	67333	50.12	ug/L	0.00
Spiked Amount	50.000	Range	20 - 135	Recovery	=	100.24%
48) 1,1,2,2-Tetrachloroethane-	12.69	84	160578	24.23	ug/L	0.00
Spiked Amount	25.000	Range	45 - 120	Recovery	=	96.92%
61) 1,2-Dichlorobenzene-d4	13.85	152	186658	30.15	ug/L	0.00
Spiked Amount	25.000	Range	75 - 120	Recovery	=	120.60%#

## Target Compounds

Target Compounds	R.T.	QIon	Response	Conc	Units	Qvalue
13) Acetone	4.12	43	6019	2.835	ug/L	89
16) Methylene chloride	4.90	84	8796m	1.069	ug/L	
22) cis-1,2-Dichloroethene	7.17	96	2948	0.428	ug/L	76
35) Trichloroethene	9.09	95	24961	3.606	ug/L	97
47) Tetrachloroethene	10.86	164	3300	0.605	ug/L	83

(#) = qualifier out of range (m) = manual integration (+) = signals summed

Data Path : Z:\VOASRV\HPCHEM1\MSVOA\_W\DATA\VW040619\  
 Data File : VW009773.D  
 Acq On : 06 Apr 2019 15:29  
 Operator : SY/VA  
 Sample : K2327-06  
 Misc : 7.46G/10ML/MSVOA\_W/SOIL  
 ALS Vial : 1 Sample Multiplier: 1

**Instrument :**  
 MSVOA\_W  
**Client Sampled :**  
 BF2S3

**Manual Integrations**  
**APPROVED**  
 MMDadoda  
 4/11/2019 11:43:05 AM

Quant Time: Apr 07 06:14:41 2019  
 Quant Method : Z:\VOASRV\HPCHEM1\MSVOA\_W\METHOD\SOM2WLM040319S.M  
 Quant Title : VOC Analysis  
 QLast Update : Sun Apr 07 03:56:20 2019  
 Response via : Initial Calibration

