

Data Path : Z:\voasrv\HPCHEM1\MSVOA_W\Data\VW041124\
 Data File : VW028391.D
 Acq On : 11 Apr 2024 10:14
 Operator : SY/MD
 Sample : VW0411SBL01
 Misc : 5.00g/10mL/MSVOA_W/SOIL
 ALS Vial : 1 Sample Multiplier: 1

Instrument :
 MSVOA_W
 ClientSampleId :
 VBLK462

Integration Parameters: LSCINT.P

Integrator: RTE
 Smoothing : OFF
 Sampling : 1
 Start Thrs : 0.2
 Stop Thrs : 0

Filtering: 5
 Min Area: 0 % of largest Peak
 Max Peaks: 100
 Peak Location: TOP

If leading or trailing edge < 100 prefer < Baseline drop else tangent >
 Peak separation: 5

Method : Z:\voasrv\HPCHEM1\MSVOA_W\Method\SFAMWLM040824SMA.M
 Title : SFAM01.0

Signal : TIC: VW028391.D\data.ms

peak #	R.T. min	first scan	max scan	last scan	PK TY	peak height	corr. area	corr. % max.	% of total
1	2.363	72	78	93	rBV	68981	162890	14.76%	2.043%
2	2.899	160	166	180	rVB	53324	144256	13.07%	1.809%
3	3.820	315	317	319	rBV3	1097	1195	0.11%	0.015%
4	3.887	326	328	332	rBV5	1157	1063	0.10%	0.013%
5	3.942	335	337	339	rBV3	1539	921	0.08%	0.012%
6	4.021	340	350	368	rBV	113825	374804	33.96%	4.701%
7	4.216	380	382	385	rVB3	1576	1293	0.12%	0.016%
8	4.594	441	444	446	rBV3	1027	1157	0.10%	0.015%
9	4.631	448	450	452	rVB3	1484	970	0.09%	0.012%
10	4.710	459	463	465	rBV5	1241	1636	0.15%	0.021%
11	4.765	470	472	474	rVB3	1447	1264	0.11%	0.016%
12	4.807	474	479	482	rBV5	1666	3488	0.32%	0.044%
13	4.868	487	489	491	rBV2	1291	1452	0.13%	0.018%
14	5.051	517	519	523	rBV5	1040	1256	0.11%	0.016%
15	5.277	554	556	560	rVB5	1160	1221	0.11%	0.015%
16	5.338	565	566	569	rVB3	1478	885	0.08%	0.011%
17	5.368	569	571	572	rBV2	1418	1318	0.12%	0.017%
18	5.466	585	587	590	rVB4	1657	1626	0.15%	0.020%
19	5.655	616	618	620	rVB3	1070	813	0.07%	0.010%
20	5.691	620	624	625	rBV4	1017	1037	0.09%	0.013%
21	5.813	641	644	646	rBV4	1176	1783	0.16%	0.022%
22	5.838	646	648	651	rVB4	1226	1280	0.12%	0.016%
23	6.082	686	688	690	rVB3	1253	848	0.08%	0.011%
24	6.118	690	694	697	rBV6	859	1223	0.11%	0.015%
25	6.167	700	702	706	rVV5	1616	2067	0.19%	0.026%
26	6.216	709	710	713	rVB3	1044	898	0.08%	0.011%
27	6.271	717	719	722	rVB4	1306	1365	0.12%	0.017%
28	6.344	728	731	733	rBV4	1189	1529	0.14%	0.019%
29	6.447	744	748	750	rBV5	1719	1918	0.17%	0.024%
30	6.649	780	781	784	rBV3	1263	1103	0.10%	0.014%
31	6.917	824	825	826	rVV	1387	903	0.08%	0.011%
32	6.972	832	834	838	rVB5	1161	1207	0.11%	0.015%
33	7.075	843	851	858	rBV	27038	84070	7.62%	1.055%
34	7.374	898	900	903	rBV4	971	805	0.07%	0.010%
35	7.508	920	922	925	rBV4	1481	1341	0.12%	0.017%
36	7.648	936	945	956	rVB	185414	456960	41.40%	5.732%

Data Path : Z:\voasrv\HPCHEM1\MSVOA_W\Data\VW041124\
 Data File : VW028391.D
 Acq On : 11 Apr 2024 10:14
 Operator : SY/MD
 Sample : VW0411SBL01
 Misc : 5.00g/10mL/MSVOA_W/SOIL
 ALS Vial : 1 Sample Multiplier: 1

Instrument :
 MSVOA_W
 ClientSampleId :
 VBLK462

Integration Parameters: LSCINT.P

Integrator: RTE
 Smoothing : OFF
 Sampling : 1
 Start Thrs: 0.2
 Stop Thrs : 0

Filtering: 5
 Min Area: 0 % of largest Peak
 Max Peaks: 100
 Peak Location: TOP

If leading or trailing edge < 100 prefer < Baseline drop else tangent >
 Peak separation: 5

Method : Z:\voasrv\HPCHEM1\MSVOA_W\Method\SFAMWLM040824SMA.M
 Title : SFAM01.0

37	7.758	961	963	964	rBV2	1308	842	0.08%	0.011%
38	7.959	994	996	998	rVB3	1719	936	0.08%	0.012%
39	8.106	1018	1020	1021	rVB2	1277	894	0.08%	0.011%
40	8.118	1021	1022	1024	rBV2	816	759	0.07%	0.010%
41	8.154	1024	1028	1029	rVV4	1464	1836	0.17%	0.023%
42	8.276	1037	1048	1063	rBV2	385008	1103801	100.00%	13.845%
43	8.581	1096	1098	1102	rVB5	1698	2092	0.19%	0.026%
44	8.636	1105	1107	1109	rVV3	1630	1522	0.14%	0.019%
45	8.679	1112	1114	1119	rBV5	1813	3182	0.29%	0.040%
46	8.837	1132	1140	1150	rBV	360972	725021	65.68%	9.094%
47	9.008	1166	1168	1170	rVB2	1181	830	0.08%	0.010%
48	9.270	1204	1211	1222	rVB	254464	513353	46.51%	6.439%
49	10.032	1329	1336	1347	rBV	137968	246938	22.37%	3.097%
50	10.233	1368	1369	1373	rVB4	1189	1309	0.12%	0.016%
51	10.319	1376	1383	1396	rBV	507330	918301	83.19%	11.519%
52	10.575	1419	1425	1435	rVB	85651	145157	13.15%	1.821%
53	10.703	1442	1446	1450	rVB2	7939	12776	1.16%	0.160%
54	10.922	1474	1482	1492	rBV	103851	186321	16.88%	2.337%
55	11.154	1518	1520	1521	rBV2	1492	1151	0.10%	0.014%
56	11.428	1563	1565	1566	rBV2	2014	1528	0.14%	0.019%
57	11.477	1571	1573	1575	rBV3	1352	929	0.08%	0.012%
58	11.495	1575	1576	1578	rBV2	1383	832	0.08%	0.010%
59	11.629	1591	1598	1609	rBV	519425	872405	79.04%	10.943%
60	12.050	1664	1667	1669	rVB3	987	1003	0.09%	0.013%
61	12.087	1669	1673	1674	rBV4	650	827	0.07%	0.010%
62	12.160	1683	1685	1686	rBV2	1266	951	0.09%	0.012%
63	12.276	1703	1704	1706	rBV2	878	909	0.08%	0.011%
64	12.349	1711	1716	1718	rBV6	1542	2609	0.24%	0.033%
65	12.458	1730	1734	1742	rVB10	2204	5476	0.50%	0.069%
66	12.544	1744	1748	1749	rBV4	1306	1415	0.13%	0.018%
67	12.599	1752	1757	1764	rVB3	14653	26310	2.38%	0.330%
68	12.690	1765	1772	1780	rVV	170053	289933	26.27%	3.637%
69	12.891	1803	1805	1806	rBV2	1052	806	0.07%	0.010%
70	12.928	1807	1811	1819	rVB10	4501	9773	0.89%	0.123%
71	12.995	1819	1822	1823	rBV3	1219	1611	0.15%	0.020%
72	13.025	1825	1827	1830	rBV3	1490	1215	0.11%	0.015%
73	13.129	1841	1844	1845	rVB3	1298	1017	0.09%	0.013%
74	13.147	1845	1847	1849	rBV3	932	803	0.07%	0.010%
75	13.403	1885	1889	1892	rBV6	2177	3574	0.32%	0.045%
76	13.556	1907	1914	1924	rBV	511319	815276	73.86%	10.226%

Data Path : Z:\voasrv\HPCHEM1\MSVOA_W\Data\VW041124\
 Data File : VW028391.D
 Acq On : 11 Apr 2024 10:14
 Operator : SY/MD
 Sample : VW0411SBL01
 Misc : 5.00g/10mL/MSVOA_W/SOIL
 ALS Vial : 1 Sample Multiplier: 1

Instrument :
 MSVOA_W
 ClientSampleId :
 VBLK462

Integration Parameters: LSCINT.P

Integrator: RTE
 Smoothing : OFF Filtering: 5
 Sampling : 1 Min Area: 0 % of largest Peak
 Start Thrs: 0.2 Max Peaks: 100
 Stop Thrs : 0 Peak Location: TOP

If leading or trailing edge < 100 prefer < Baseline drop else tangent >
 Peak separation: 5

Method : Z:\voasrv\HPCHEM1\MSVOA_W\Method\SFAMWLM040824SMA.M
 Title : SFAM01.0

77	13.684	1933	1935	1937	rBV3	1794	1735	0.16%	0.022%
78	13.848	1955	1962	1972	rBV	441940	717935	65.04%	9.005%
79	13.989	1983	1985	1986	rBV2	1190	777	0.07%	0.010%
80	14.062	1992	1997	2004	rVV2	13906	25220	2.28%	0.316%
81	14.263	2028	2030	2034	rVB5	1327	1016	0.09%	0.013%
82	14.556	2075	2078	2081	rBV5	1030	1429	0.13%	0.018%
83	14.623	2087	2089	2093	rVB5	1771	1540	0.14%	0.019%
84	14.720	2099	2105	2109	rBV7	3203	6042	0.55%	0.076%
85	14.812	2116	2120	2122	rVB5	1223	1587	0.14%	0.020%
86	14.909	2134	2136	2138	rBV3	1240	1400	0.13%	0.018%
87	14.958	2142	2144	2145	rBV2	873	810	0.07%	0.010%
88	15.123	2167	2171	2177	rBV8	2426	4107	0.37%	0.052%
89	15.190	2179	2182	2183	rBV3	1031	1105	0.10%	0.014%
90	15.360	2204	2210	2211	rBV6	2760	3799	0.34%	0.048%
91	15.427	2214	2221	2225	rBV3	13171	23105	2.09%	0.290%
92	15.629	2252	2254	2256	rBV3	1130	804	0.07%	0.010%
93	15.671	2259	2261	2264	rVV4	1096	1026	0.09%	0.013%
94	15.775	2277	2278	2283	rVB5	1541	2067	0.19%	0.026%
95	15.818	2283	2285	2286	rBV2	1805	1387	0.13%	0.017%
96	16.110	2330	2333	2334	rBV3	1151	1076	0.10%	0.013%
97	16.433	2385	2386	2389	rBV3	1469	1496	0.14%	0.019%
98	16.470	2389	2392	2393	rBV3	1080	1004	0.09%	0.013%
99	16.598	2412	2413	2415	rBV2	1159	806	0.07%	0.010%
100	16.708	2429	2431	2433	rBV3	1183	960	0.09%	0.012%

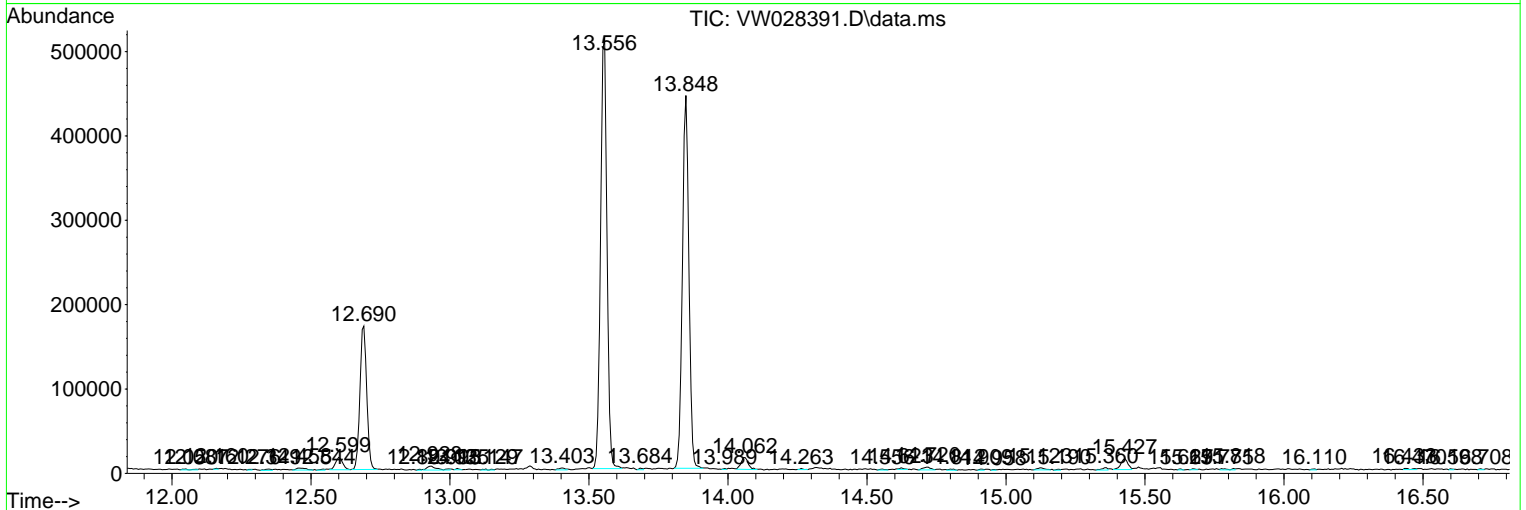
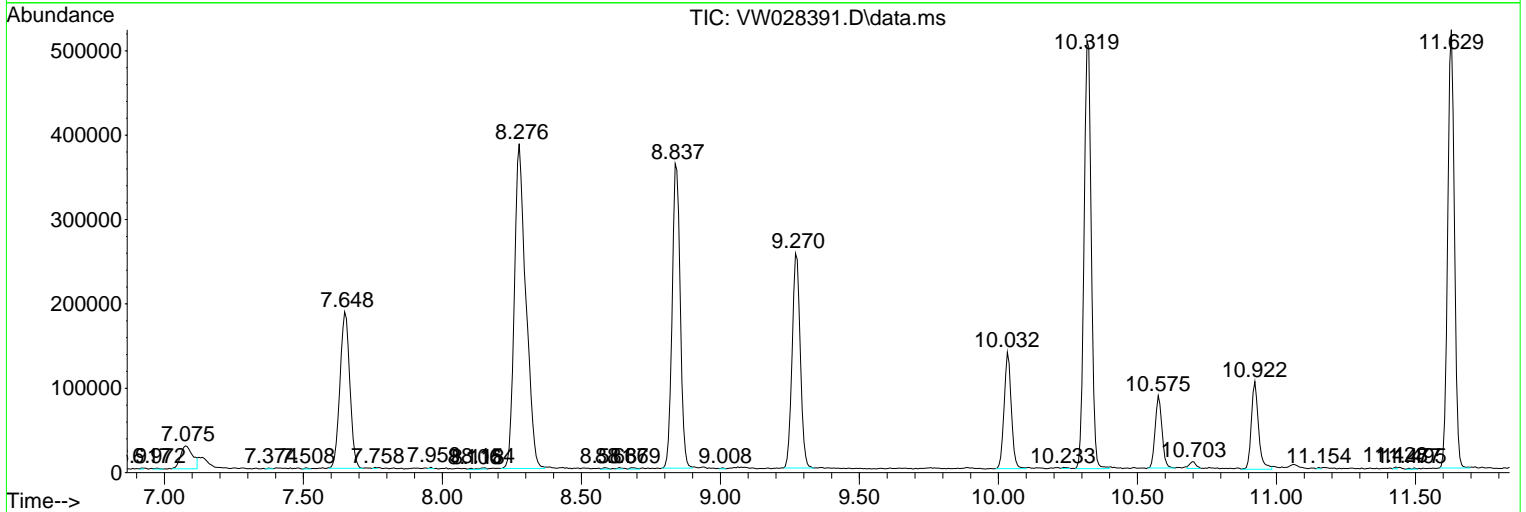
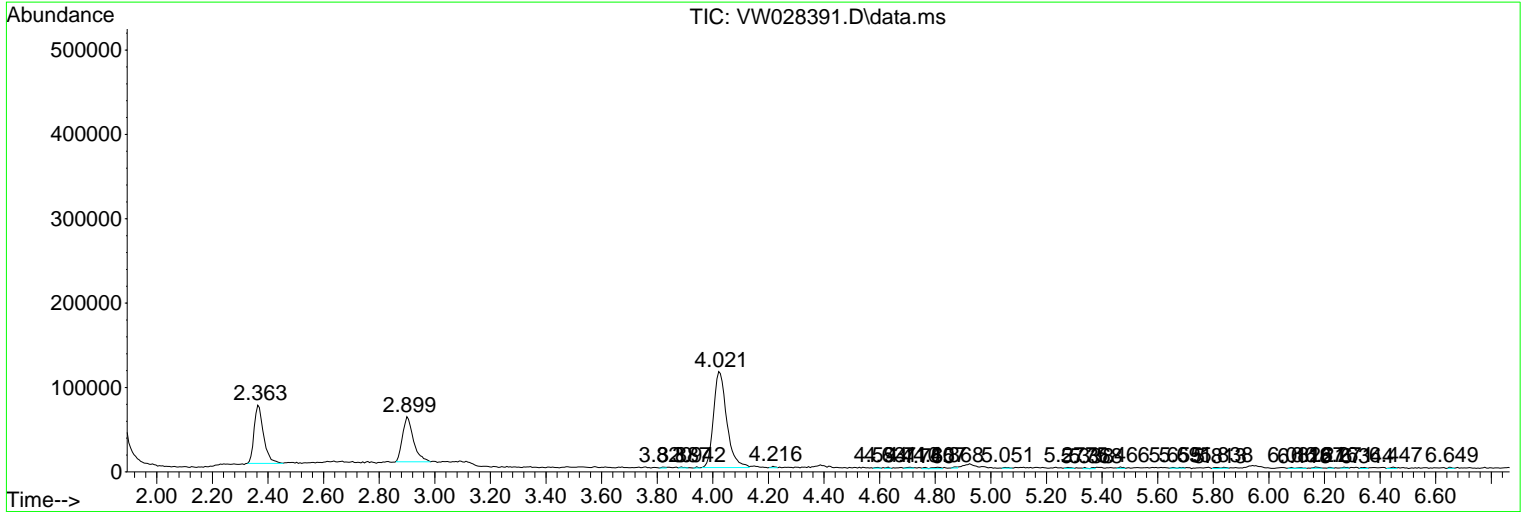
Sum of corrected areas: 7972301

Data Path : Z:\voasrv\HPCHEM1\MSVOA_W\Data\VW041124\
 Data File : VW028391.D
 Acq On : 11 Apr 2024 10:14
 Operator : SY/MD
 Sample : VW0411SBL01
 Misc : 5.00g/10mL/MSVOA_W/SOIL
 ALS Vial : 1 Sample Multiplier: 1

Instrument :
 MSVOA_W
 ClientSampleId :
 VBLK462

Quant Method : Z:\voasrv\HPCHEM1\MSVOA_W\Method\SFAMWLM040824SMA.M
 Quant Title : SFAM01.0

TIC Library : C:\Database\NIST20.L
 TIC Integration Parameters: LSCINT.P



Library Search Compound Report

Data Path : Z:\voasrv\HPCHEM1\MSVOA_W\Data\VW041124\
Data File : VW028391.D
Acq On : 11 Apr 2024 10:14
Operator : SY/MD
Sample : VW0411SBL01
Misc : 5.00g/10mL/MSVOA_W/SOIL
ALS Vial : 1 Sample Multiplier: 1

Instrument :
MSVOA_W
ClientSampleId :
VBLK462

Quant Method : Z:\voasrv\HPCHEM1\MSVOA_W\Method\SFAMWLM040824SMA.M
Quant Title : SFAM01.0

TIC Library : C:\Database\NIST20.L
TIC Integration Parameters: LSCINT.P

No Library Search Compounds Detected

Data Path : Z:\voasrv\HPCHEM1\MSVOA_W\Data\VW041124\
Data File : VW028391.D
Acq On : 11 Apr 2024 10:14
Operator : SY/MD
Sample : VW0411SBL01
Misc : 5.00g/10mL/MSVOA_W/SOIL
ALS Vial : 1 Sample Multiplier: 1

Instrument :
MSVOA_W
ClientSampleId :
VBLK462

Quant Method : Z:\voasrv\HPCHEM1\MSVOA_W\Method\SFAMWLM040824SMA.M
Quant Title : SFAM01.0

TIC Library : C:\Database\NIST0.L
TIC Integration Parameters: LSCINT.P

TIC Top Hit name	RT	EstConc	Units	Response	--Internal Standard--			
					#	RT	Resp	Conc
