

Data Path : Z:\voasrv\HPCHEM1\MSVOA\_W\Data\VW041124\  
 Data File : VW028399.D  
 Acq On : 11 Apr 2024 13:25  
 Operator : SY/MD  
 Sample : P2052-12  
 Misc : 2.56g/10mL/MSVOA\_W/SOIL/A  
 ALS Vial : 1 Sample Multiplier: 1

Instrument :  
 MSVOA\_W  
 ClientSampleId :  
 COAE8

Integration Parameters: LSCINT.P

Integrator: RTE  
 Smoothing : OFF  
 Sampling : 1  
 Start Thrs : 0.2  
 Stop Thrs : 0

Filtering: 5  
 Min Area: 0 % of largest Peak  
 Max Peaks: 100  
 Peak Location: TOP

If leading or trailing edge < 100 prefer < Baseline drop else tangent >  
 Peak separation: 5

Method : Z:\voasrv\HPCHEM1\MSVOA\_W\Method\SFAMWLM040824SMA.M  
 Title : SFAM01.0

Signal : TIC: VW028399.D\data.ms

peak #	R.T. min	first scan	max scan	last scan	PK TY	peak height	corr. area	corr. % max.	% of total
1	3.094	196	198	201	rBV3	1280	1650	1.01%	0.158%
2	3.277	226	228	230	rBV3	1134	1010	0.62%	0.096%
3	3.606	281	282	284	rBV2	1158	946	0.58%	0.090%
4	3.753	304	306	310	rVB4	1331	1022	0.63%	0.098%
5	3.820	315	317	319	rBV3	1513	1485	0.91%	0.142%
6	4.027	343	351	359	rVB2	19762	52414	32.14%	5.006%
7	4.576	438	441	443	rBV4	1077	1069	0.66%	0.102%
8	4.612	446	447	450	rVB3	1528	1553	0.95%	0.148%
9	4.655	453	454	457	rBV3	1112	881	0.54%	0.084%
10	5.021	512	514	520	rVB7	1234	1191	0.73%	0.114%
11	5.118	529	530	532	rBV2	862	817	0.50%	0.078%
12	5.454	583	585	587	rBV3	1002	911	0.56%	0.087%
13	5.691	622	624	627	rVV4	1061	1096	0.67%	0.105%
14	5.740	630	632	634	rVB3	1538	1091	0.67%	0.104%
15	5.771	634	637	639	rBV4	1199	1550	0.95%	0.148%
16	5.813	639	644	645	rBV5	901	1353	0.83%	0.129%
17	5.960	666	668	671	rVB3	1446	1771	1.09%	0.169%
18	6.033	679	680	682	rBV2	1182	1192	0.73%	0.114%
19	6.185	704	705	710	rBV5	1334	1544	0.95%	0.147%
20	6.636	778	779	783	rBV4	1184	1275	0.78%	0.122%
21	6.716	789	792	795	rBV5	1476	1818	1.11%	0.174%
22	6.752	797	798	802	rBV4	1035	1275	0.78%	0.122%
23	6.813	804	808	809	rBV3	1194	1098	0.67%	0.105%
24	6.941	827	829	832	rVB4	1380	1170	0.72%	0.112%
25	7.228	874	876	880	rBV5	1197	1975	1.21%	0.189%
26	7.374	898	900	904	rVB5	1259	1222	0.75%	0.117%
27	7.453	911	913	916	rVB4	1252	1106	0.68%	0.106%
28	7.484	916	918	919	rBV2	1336	985	0.60%	0.094%
29	7.648	935	945	956	rVB	26360	66665	40.88%	6.367%
30	7.776	964	966	969	rBV4	1603	1128	0.69%	0.108%
31	7.837	972	976	979	rBV5	1610	2898	1.78%	0.277%
32	7.965	994	997	1001	rBV6	1292	1896	1.16%	0.181%
33	8.276	1037	1048	1064	rVV3	51753	163092	100.00%	15.577%
34	8.764	1126	1128	1130	rBV3	1259	1559	0.96%	0.149%
35	8.843	1134	1141	1149	rVB	43218	90821	55.69%	8.675%
36	8.941	1155	1157	1159	rBV3	1192	1054	0.65%	0.101%

Data Path : Z:\voasrv\HPCHEM1\MSVOA\_W\Data\VW041124\  
 Data File : VW028399.D  
 Acq On : 11 Apr 2024 13:25  
 Operator : SY/MD  
 Sample : P2052-12  
 Misc : 2.56g/10mL/MSVOA\_W/SOIL/A  
 ALS Vial : 1 Sample Multiplier: 1

Instrument :  
 MSVOA\_W  
 ClientSampleId :  
 COAE8

Integration Parameters: LSCINT.P

Integrator: RTE  
 Smoothing : OFF  
 Sampling : 1  
 Start Thrs : 0.2  
 Stop Thrs : 0

Filtering: 5  
 Min Area: 0 % of largest Peak  
 Max Peaks: 100  
 Peak Location: TOP

If leading or trailing edge < 100 prefer < Baseline drop else tangent >  
 Peak separation: 5

Method : Z:\voasrv\HPCHEM1\MSVOA\_W\Method\SFAMWLM040824SMA.M  
 Title : SFAM01.0

37	8.977	1161	1163	1166	rVB4	1674	1417	0.87%	0.135%
38	9.020	1166	1170	1171	rVB4	1426	1229	0.75%	0.117%
39	9.197	1197	1199	1201	rVB3	1378	968	0.59%	0.092%
40	9.276	1205	1212	1219	rVB	35425	73354	44.98%	7.006%
41	9.563	1256	1259	1261	rBV4	1219	1520	0.93%	0.145%
42	9.581	1261	1262	1265	rVV3	1247	1134	0.70%	0.108%
43	9.630	1268	1270	1272	rBV2	1207	1452	0.89%	0.139%
44	9.709	1281	1283	1288	rVB6	1508	2042	1.25%	0.195%
45	9.916	1315	1317	1318	rBV2	1311	1210	0.74%	0.116%
46	10.032	1331	1336	1342	rBV	15223	29911	18.34%	2.857%
47	10.148	1352	1355	1358	rBV5	1820	2496	1.53%	0.238%
48	10.246	1367	1371	1372	rBV4	1165	1553	0.95%	0.148%
49	10.319	1377	1383	1390	rBV	59604	111520	68.38%	10.652%
50	10.575	1421	1425	1431	rBV2	8470	14773	9.06%	1.411%
51	10.697	1441	1445	1449	rBV7	2192	3498	2.14%	0.334%
52	10.873	1471	1474	1476	rBV4	844	958	0.59%	0.092%
53	10.928	1477	1483	1489	rVV	10621	22459	13.77%	2.145%
54	11.221	1529	1531	1532	rBV2	1250	860	0.53%	0.082%
55	11.239	1532	1534	1537	rVB4	1188	901	0.55%	0.086%
56	11.355	1551	1553	1555	rVB3	1142	982	0.60%	0.094%
57	11.373	1555	1556	1559	rBV3	687	829	0.51%	0.079%
58	11.434	1564	1566	1571	rVB6	1594	1951	1.20%	0.186%
59	11.495	1572	1576	1578	rVB5	944	1202	0.74%	0.115%
60	11.520	1578	1580	1583	rBV4	873	833	0.51%	0.080%
61	11.629	1590	1598	1608	rBV	57828	104535	64.10%	9.984%
62	11.971	1649	1654	1656	rBV6	1280	2534	1.55%	0.242%
63	12.044	1662	1666	1668	rBV5	1446	1493	0.92%	0.143%
64	12.209	1691	1693	1696	rVB4	1080	1034	0.63%	0.099%
65	12.373	1718	1720	1724	rVB4	1867	1567	0.96%	0.150%
66	12.416	1724	1727	1729	rBV4	836	1186	0.73%	0.113%
67	12.568	1749	1752	1753	rBV3	1119	1340	0.82%	0.128%
68	12.599	1755	1757	1764	rVV6	3111	5125	3.14%	0.490%
69	12.690	1766	1772	1782	rVV	24113	47381	29.05%	4.526%
70	12.769	1782	1785	1788	rVV5	1545	1670	1.02%	0.160%
71	12.995	1817	1822	1824	rBV6	1041	1824	1.12%	0.174%
72	13.044	1827	1830	1831	rVV3	1243	974	0.60%	0.093%
73	13.080	1834	1836	1839	rBV4	868	999	0.61%	0.095%
74	13.367	1880	1883	1884	rBV3	938	1232	0.76%	0.118%
75	13.397	1887	1888	1891	rBV3	2053	2154	1.32%	0.206%
76	13.428	1891	1893	1895	rBV2	897	1022	0.63%	0.098%

Data Path : Z:\voasrv\HPCHEM1\MSVOA\_W\Data\VW041124\  
 Data File : VW028399.D  
 Acq On : 11 Apr 2024 13:25  
 Operator : SY/MD  
 Sample : P2052-12  
 Misc : 2.56g/10mL/MSVOA\_W/SOIL/A  
 ALS Vial : 1 Sample Multiplier: 1

Instrument :  
 MSVOA\_W  
 ClientSampleId :  
 C0AE8

Integration Parameters: LSCINT.P

Integrator: RTE  
 Smoothing : OFF                   Filtering: 5  
 Sampling : 1                        Min Area: 0 % of largest Peak  
 Start Thrs: 0.2                    Max Peaks: 100  
 Stop Thrs : 0                       Peak Location: TOP

If leading or trailing edge < 100 prefer < Baseline drop else tangent >  
 Peak separation: 5

Method : Z:\voasrv\HPCHEM1\MSVOA\_W\Method\SFAMWLM040824SMA.M  
 Title : SFAM01.0

77	13.495	1899	1904	1907	rBV6	2039	3683	2.26%	0.352%
78	13.556	1908	1914	1923	rVB	42587	70199	43.04%	6.705%
79	13.690	1934	1936	1939	rVB3	1150	1236	0.76%	0.118%
80	13.714	1939	1940	1942	rBV2	1376	936	0.57%	0.089%
81	13.751	1942	1946	1947	rBV4	1394	1355	0.83%	0.129%
82	13.849	1957	1962	1971	rVB	42461	72385	44.38%	6.914%
83	13.946	1975	1978	1982	rBV6	1161	1945	1.19%	0.186%
84	14.099	2000	2003	2005	rBV4	1329	1427	0.87%	0.136%
85	14.208	2017	2021	2024	rBV6	1489	2035	1.25%	0.194%
86	14.257	2027	2029	2032	rVB4	1466	1293	0.79%	0.123%
87	14.312	2036	2038	2040	rBV3	1000	935	0.57%	0.089%
88	14.416	2054	2055	2058	rBV3	1421	1017	0.62%	0.097%
89	14.513	2070	2071	2074	rBV3	1012	979	0.60%	0.094%
90	14.611	2082	2087	2091	rBV7	1500	2631	1.61%	0.251%
91	14.708	2099	2103	2107	rVB7	1041	1807	1.11%	0.173%
92	14.763	2110	2112	2114	rVV3	1238	969	0.59%	0.093%
93	14.830	2120	2123	2125	rBV3	1093	1563	0.96%	0.149%
94	15.007	2148	2152	2154	rBV5	1379	2075	1.27%	0.198%
95	15.562	2241	2243	2246	rVB4	1026	856	0.52%	0.082%
96	15.586	2246	2247	2251	rBV4	1160	1333	0.82%	0.127%
97	15.940	2302	2305	2307	rBV4	1373	1782	1.09%	0.170%
98	16.074	2325	2327	2328	rBV2	1599	1189	0.73%	0.114%
99	16.604	2411	2414	2415	rBV3	1134	1261	0.77%	0.120%
100	16.671	2423	2425	2428	rBV4	1240	1381	0.85%	0.132%

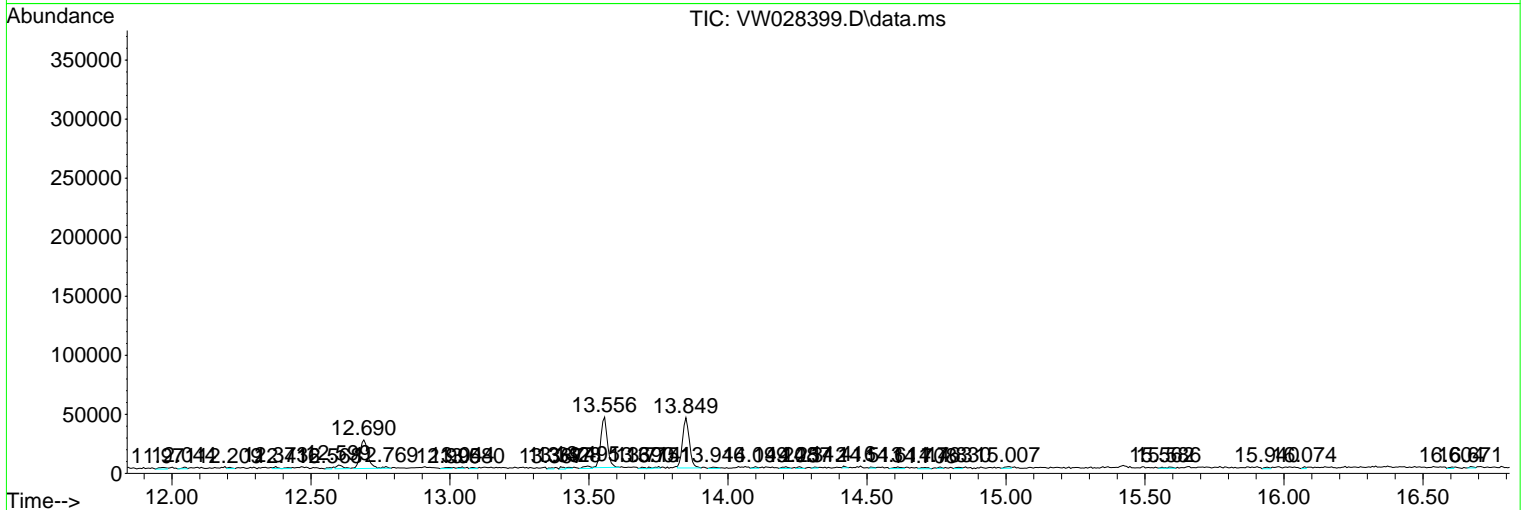
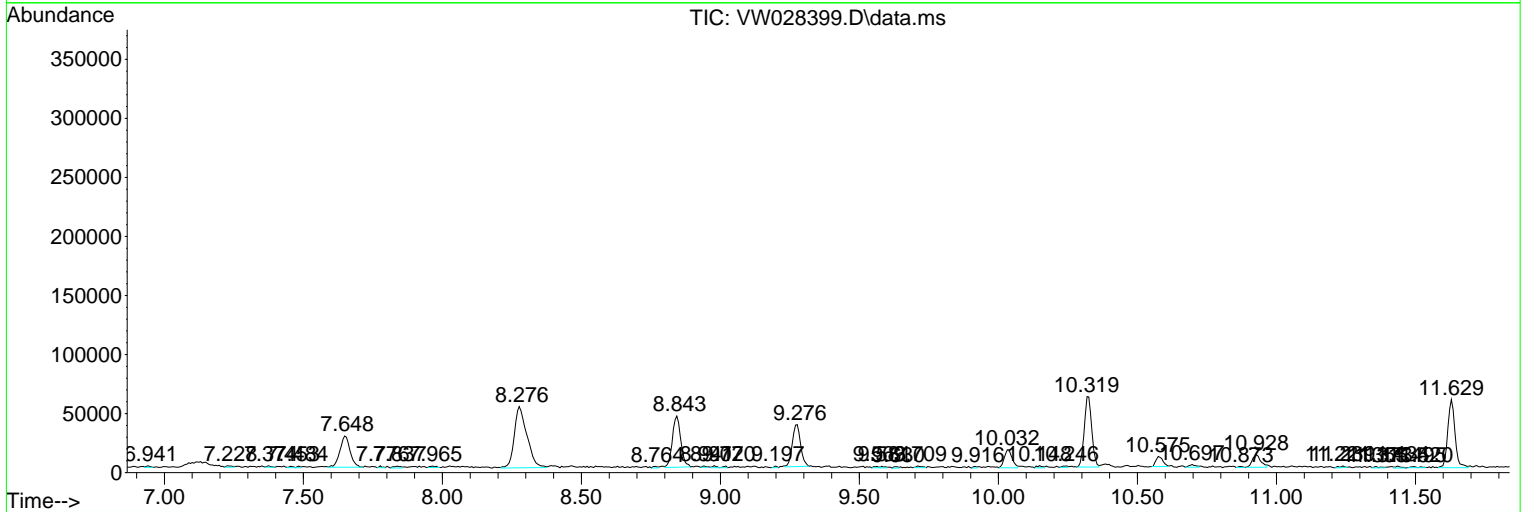
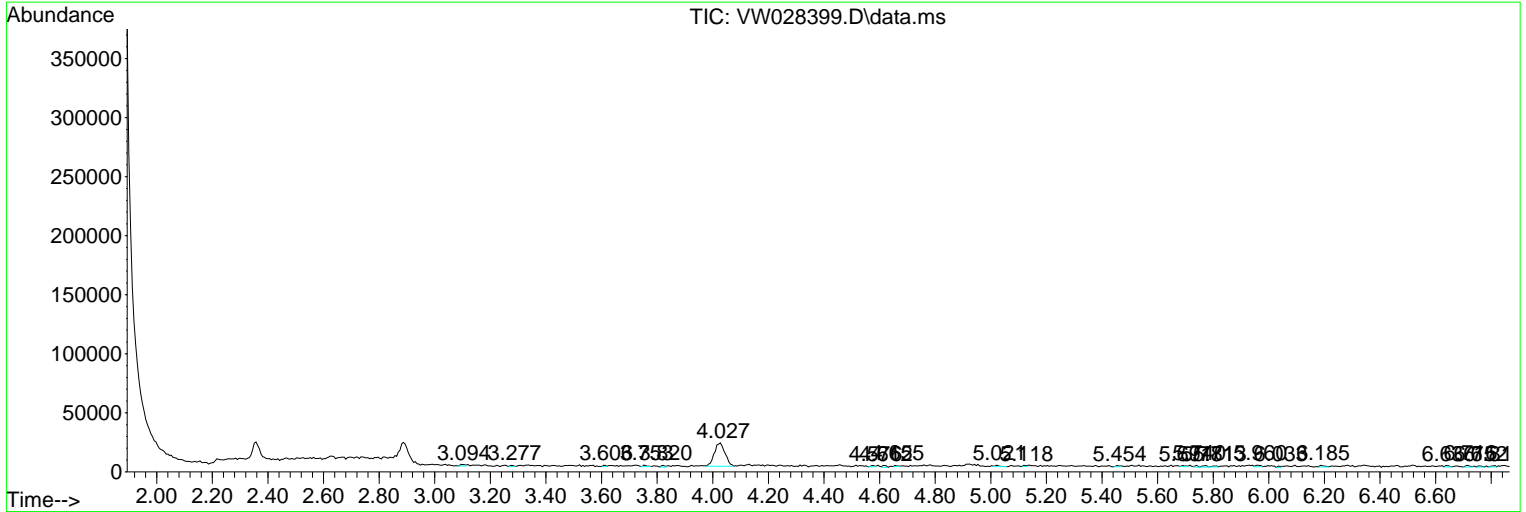
Sum of corrected areas: 1046977

Data Path : Z:\voasrv\HPCHEM1\MSVOA\_W\Data\VW041124\  
Data File : VW028399.D  
Acq On : 11 Apr 2024 13:25  
Operator : SY/MD  
Sample : P2052-12  
Misc : 2.56g/10mL/MSVOA\_W/SOIL/A  
ALS Vial : 1 Sample Multiplier: 1

Instrument :  
MSVOA\_W  
ClientSampleId :  
COAE8

Quant Method : Z:\voasrv\HPCHEM1\MSVOA\_W\Method\SFAMWLM040824SMA.M  
Quant Title : SFAM01.0

TIC Library : C:\Database\NIST20.L  
TIC Integration Parameters: LSCINT.P



Data Path : Z:\voasrv\HPCHEM1\MSVOA\_W\Data\VW041124\  
 Data File : VW028399.D  
 Acq On : 11 Apr 2024 13:25  
 Operator : SY/MD  
 Sample : P2052-12  
 Misc : 2.56g/10mL/MSVOA\_W/SOIL/A  
 ALS Vial : 1 Sample Multiplier: 1

Instrument :  
 MSVOA\_W  
 ClientSampleId :  
 COAE8

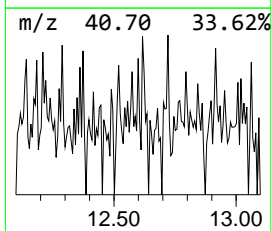
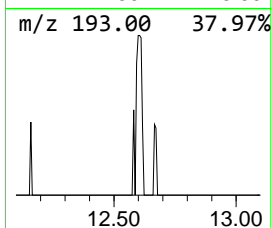
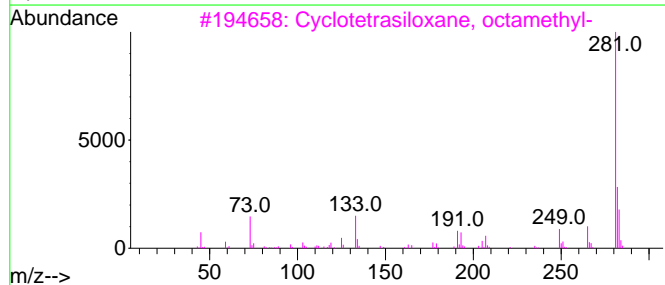
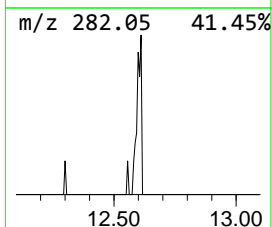
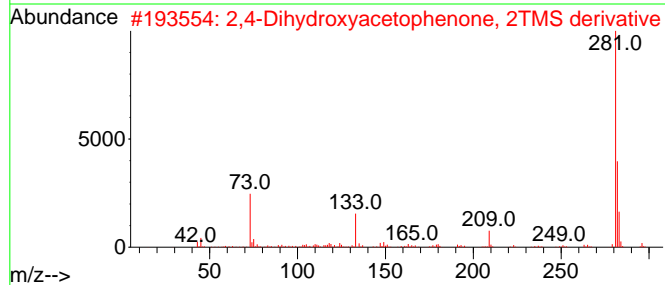
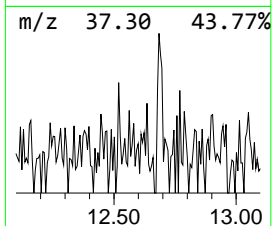
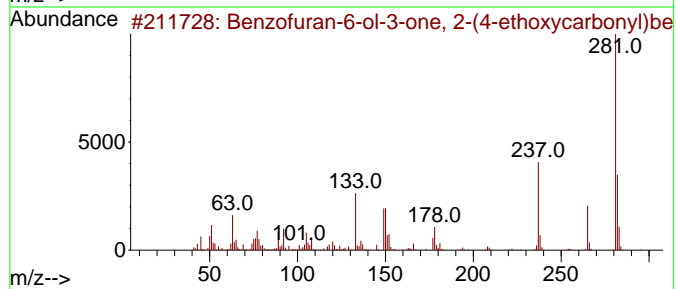
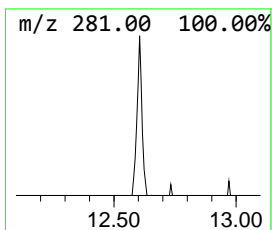
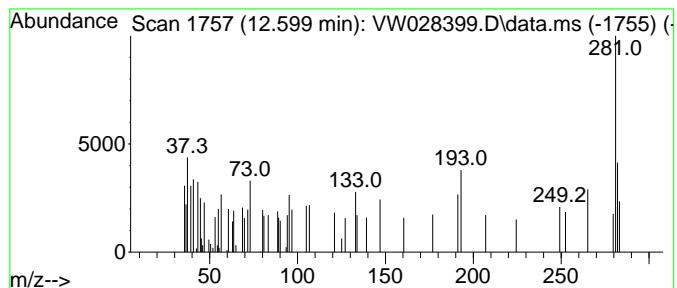
Quant Method : Z:\voasrv\HPCHEM1\MSVOA\_W\Method\SFAMWLM040824SMA.M  
 Quant Title : SFAM01.0

TIC Library : C:\Database\NIST20.L  
 TIC Integration Parameters: LSCINT.P

\*\*\*\*\*  
 Peak Number 2 unknown-01 Concentration Rank 2

R.T.	EstConc	Area	Relative to ISTD	R.T.
12.599	1.83 ug/L	5125	1,4-Dichlorobenzene-d4	13.556

Hit#	of	5	Tentative ID	MW	MolForm	CAS#	Qual
1			Benzofuran-6-ol-3-one, 2-(4-etho...	310	C18H14O5	1000128-64-6	40
2			2,4-Dihydroxyacetophenone, 2TMS ...	296	C14H24O3Si2	1000352-82-1	28
3			Cyclotetrasiloxane, octamethyl-	296	C8H24O4Si4	000556-67-2	16
4			3,7-Dimethoxyflavone	282	C17H14O4	020950-52-1	14
5			{7-Amino-2-methyl-6-phenylpyraz...	281	C14H11N5S	1000489-23-1	14



Data Path : Z:\voasrv\HPCHEM1\MSVOA\_W\Data\VW041124\  
 Data File : VW028399.D  
 Acq On : 11 Apr 2024 13:25  
 Operator : SY/MD  
 Sample : P2052-12  
 Misc : 2.56g/10mL/MSVOA\_W/SOIL/A  
 ALS Vial : 1 Sample Multiplier: 1

Instrument :  
 MSVOA\_W  
 ClientSampleId :  
 COAE8

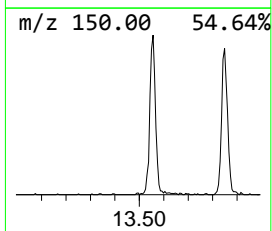
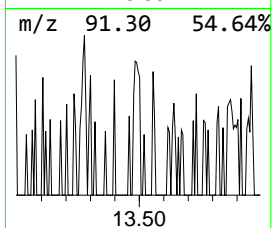
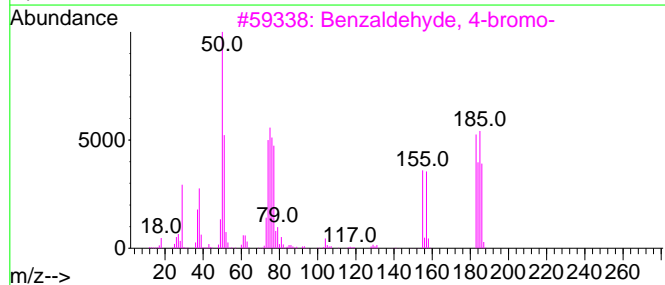
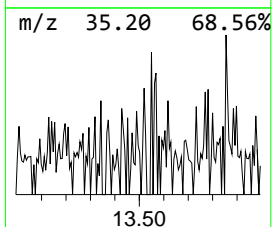
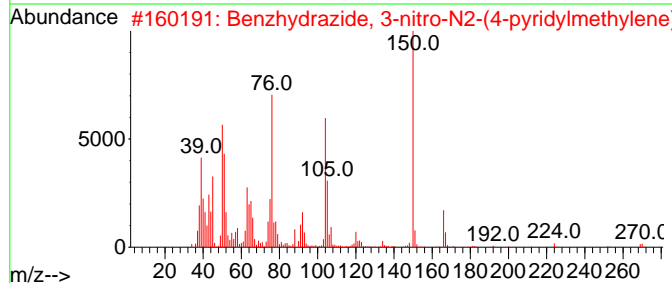
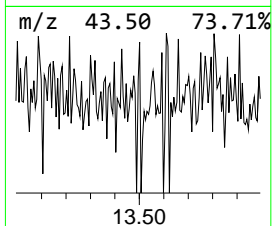
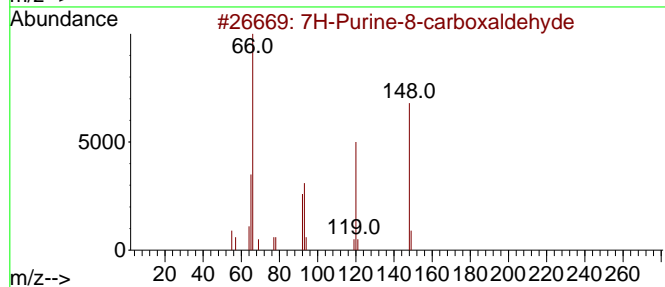
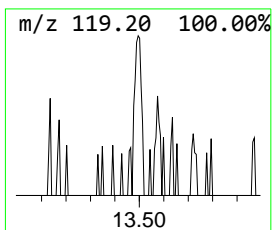
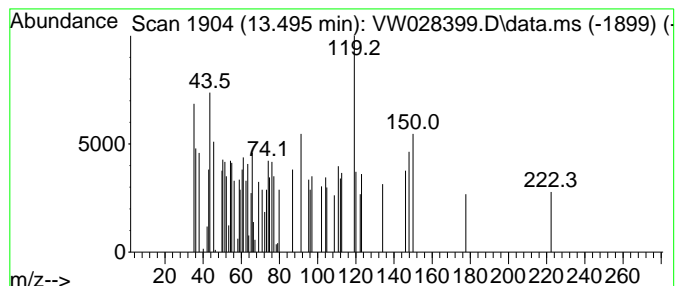
Quant Method : Z:\voasrv\HPCHEM1\MSVOA\_W\Method\SFAMWLM040824SMA.M  
 Quant Title : SFAM01.0

TIC Library : C:\Database\NIST20.L  
 TIC Integration Parameters: LSCINT.P

\*\*\*\*\*  
 Peak Number 3 unknown-02 Concentration Rank 3

R.T.	EstConc	Area	Relative to ISTD	R.T.
13.495	1.31 ug/L	3683	1,4-Dichlorobenzene-d4	13.556

Hit#	of	Tentative ID	MW	MolForm	CAS#	Qual
1	5	7H-Purine-8-carboxaldehyde	148	C6H4N4O	056805-26-6	25
2		Benzhydrazide, 3-nitro-N2-(4-pyr...	270	C13H10N4O3	109354-58-7	17
3		Benzaldehyde, 4-bromo-	184	C7H5BrO	001122-91-4	14
4		Bicyclo[2.2.1]heptane-1-carboxyl...	218	C8H11BrO2	074830-47-0	10
5		Ethanedial,1,2-dichloro-, bis(0-...	240	C6H6Cl2N2O4	089715-76-4	10



Data Path : Z:\voasrv\HPCHEM1\MSVOA\_W\Data\VW041124\  
Data File : VW028399.D  
Acq On : 11 Apr 2024 13:25  
Operator : SY/MD  
Sample : P2052-12  
Misc : 2.56g/10mL/MSVOA\_W/SOIL/A  
ALS Vial : 1 Sample Multiplier: 1

Instrument :  
MSVOA\_W  
ClientSampleId :  
C0AE8

Quant Method : Z:\voasrv\HPCHEM1\MSVOA\_W\Method\SFAMWLM040824SMA.M  
Quant Title : SFAM01.0

TIC Library : C:\Database\NIST20.L  
TIC Integration Parameters: LSCINT.P

TIC Top Hit name	RT	EstConc	Units	Response	--Internal Standard--			
					#	RT	Resp	Conc
unknown-01	12.599	1.8	ug/L	5125	3	13.556	70199	25.0
unknown-02	13.495	1.3	ug/L	3683	3	13.556	70199	25.0