

Data Path : Z:\voasrv\HPCHEM1\MSVOA_W\Data\VW041322\
 Data File : VW022530.D
 Acq On : 13 Apr 2022 14:35
 Operator : SY/VA
 Sample : N2373-07
 Misc : 5.65g/10mL/MSVOA_W/SOIL
 ALS Vial : 1 Sample Multiplier: 1

Instrument :
 MSVOA_W
 ClientSampleId :
 BFFD8

Integration Parameters: LSCINT.P

Integrator: RTE
 Smoothing : OFF Filtering: 5
 Sampling : 1 Min Area: 0 % of largest Peak
 Start Thrs: 0.2 Max Peaks: 100
 Stop Thrs : 0 Peak Location: TOP

If leading or trailing edge < 100 prefer < Baseline drop else tangent >
 Peak separation: 5

Method : Z:\voasrv\HPCHEM1\MSVOA_W\Method\SFAMWLM040722SMA.M
 Title : SFAM01.0

Signal : TIC: VW022530.D\data.ms

peak #	R.T. min	first scan	max scan	last scan	PK TY	peak height	corr. area	corr. % max.	% of total
1	2.349	68	73	82	rVB	109660	173414	19.47%	2.985%
2	2.885	156	161	169	rVB	60399	127783	14.34%	2.200%
3	3.263	219	223	226	rBV5	1231	2461	0.28%	0.042%
4	3.348	235	237	239	rBV2	1103	1054	0.12%	0.018%
5	3.470	253	257	260	rBV5	1349	2105	0.24%	0.036%
6	3.653	271	287	291	rBV4	7629	33316	3.74%	0.573%
7	4.013	337	346	362	rVV2	93850	278202	31.23%	4.789%
8	4.324	394	397	400	rBV5	847	1205	0.14%	0.021%
9	4.415	409	412	414	rVB4	927	866	0.10%	0.015%
10	4.507	425	427	430	rBV4	1203	1639	0.18%	0.028%
11	4.690	454	457	458	rBV3	1080	1004	0.11%	0.017%
12	4.836	476	481	484	rBV4	1368	2380	0.27%	0.041%
13	4.915	486	494	504	rVV3	10634	34052	3.82%	0.586%
14	5.013	509	510	513	rVB3	1214	870	0.10%	0.015%
15	5.183	536	538	539	rBV	627	565	0.06%	0.010%
16	5.305	552	558	559	rBV5	1015	1662	0.19%	0.029%
17	5.500	589	590	592	rBV2	661	693	0.08%	0.012%
18	5.555	597	599	602	rBV3	1554	1764	0.20%	0.030%
19	5.610	606	608	610	rBV3	1019	922	0.10%	0.016%
20	5.671	615	618	619	rBV3	724	602	0.07%	0.010%
21	5.885	651	653	654	rBV	923	733	0.08%	0.013%
22	5.933	655	661	668	rVV4	7216	19401	2.18%	0.334%
23	6.019	673	675	678	rBV3	636	658	0.07%	0.011%
24	6.086	684	686	688	rVB3	988	680	0.08%	0.012%
25	6.238	709	711	715	rVB4	1003	1214	0.14%	0.021%
26	6.281	715	718	719	rBV2	1100	1022	0.11%	0.018%
27	6.299	719	721	724	rBV3	993	1289	0.14%	0.022%
28	6.366	730	732	735	rVB4	1080	719	0.08%	0.012%
29	6.458	743	747	749	rBV5	666	1026	0.12%	0.018%
30	6.604	767	771	772	rBV3	1490	1944	0.22%	0.033%
31	6.775	796	799	802	rBV5	1782	1847	0.21%	0.032%
32	6.805	802	804	808	rVV5	1138	1297	0.15%	0.022%
33	6.884	814	817	823	rVB6	849	1443	0.16%	0.025%
34	6.933	823	825	829	rBV4	814	1256	0.14%	0.022%
35	7.086	843	850	870	rBV	25892	85247	9.57%	1.467%
36	7.305	884	886	888	rVB3	1056	743	0.08%	0.013%

Data Path : Z:\voasrv\HPCHEM1\MSVOA_W\Data\VW041322\
 Data File : VW022530.D
 Acq On : 13 Apr 2022 14:35
 Operator : SY/VA
 Sample : N2373-07
 Misc : 5.65g/10mL/MSVOA_W/SOIL
 ALS Vial : 1 Sample Multiplier: 1

Instrument :
 MSVOA_W
 ClientSampleId :
 BFFD8

Integration Parameters: LSCINT.P

Integrator: RTE
 Smoothing : OFF
 Sampling : 1
 Start Thrs: 0.2
 Stop Thrs : 0

Filtering: 5
 Min Area: 0 % of largest Peak
 Max Peaks: 100
 Peak Location: TOP

If leading or trailing edge < 100 prefer < Baseline drop else tangent >
 Peak separation: 5

Method : Z:\voasrv\HPCHEM1\MSVOA_W\Method\SFAMWLM040722SMA.M
 Title : SFAM01.0

37	7.329	888	890	892	rBV3	974	747	0.08%	0.013%
38	7.646	932	942	951	rBV	164428	409405	45.95%	7.047%
39	8.067	1008	1011	1013	rVV3	1221	1068	0.12%	0.018%
40	8.085	1013	1014	1016	rVV2	1047	677	0.08%	0.012%
41	8.274	1036	1045	1066	rBV2	285572	890898	100.00%	15.335%
42	8.841	1130	1138	1148	rBV	281831	569312	63.90%	9.799%
43	9.274	1201	1209	1218	rBV	206818	426911	47.92%	7.348%
44	10.036	1327	1334	1344	rVB	100145	187005	20.99%	3.219%
45	10.323	1374	1381	1388	rBV	340618	588393	66.04%	10.128%
46	10.579	1417	1423	1432	rVB	59723	107698	12.09%	1.854%
47	10.701	1438	1443	1451	rBV2	13385	27029	3.03%	0.465%
48	10.926	1473	1480	1489	rBV	109301	201935	22.67%	3.476%
49	11.481	1570	1571	1574	rVB3	945	762	0.09%	0.013%
50	11.518	1574	1577	1578	rBV2	1109	757	0.08%	0.013%
51	11.536	1578	1580	1583	rVV3	925	1120	0.13%	0.019%
52	11.627	1587	1595	1604	rBV	308947	535548	60.11%	9.218%
53	11.816	1624	1626	1627	rBV2	909	764	0.09%	0.013%
54	11.969	1650	1651	1653	rVB2	1079	701	0.08%	0.012%
55	12.158	1681	1682	1684	rBV2	964	622	0.07%	0.011%
56	12.176	1684	1685	1688	rVB3	1192	1017	0.11%	0.018%
57	12.249	1694	1697	1700	rBV5	966	1563	0.18%	0.027%
58	12.304	1704	1706	1708	rVB2	1203	910	0.10%	0.016%
59	12.341	1708	1712	1714	rBV4	839	1292	0.15%	0.022%
60	12.365	1714	1716	1719	rVB3	1126	1117	0.13%	0.019%
61	12.432	1725	1727	1729	rBV3	1008	573	0.06%	0.010%
62	12.457	1729	1731	1732	rBV2	1734	1277	0.14%	0.022%
63	12.518	1739	1741	1746	rBV6	1230	2072	0.23%	0.036%
64	12.603	1748	1755	1762	rVB2	22632	41160	4.62%	0.708%
65	12.688	1762	1769	1777	rBV	148200	244785	27.48%	4.213%
66	12.859	1796	1797	1799	rBV2	691	560	0.06%	0.010%
67	12.926	1805	1808	1809	rBV3	1372	1614	0.18%	0.028%
68	12.956	1811	1813	1814	rVV2	1907	1388	0.16%	0.024%
69	13.011	1818	1822	1826	rBV5	1726	3305	0.37%	0.057%
70	13.182	1848	1850	1851	rBV	2319	1861	0.21%	0.032%
71	13.353	1876	1878	1879	rBV2	876	681	0.08%	0.012%
72	13.383	1880	1883	1884	rBV3	1358	1173	0.13%	0.020%
73	13.469	1893	1897	1900	rBV5	3011	5547	0.62%	0.095%
74	13.554	1905	1911	1917	rBV	205255	327901	36.81%	5.644%
75	13.719	1936	1938	1939	rVB2	1389	768	0.09%	0.013%
76	13.737	1939	1941	1942	rBV2	1181	756	0.08%	0.013%

Data Path : Z:\voasrv\HPCHEM1\MSVOA_W\Data\VW041322\
 Data File : VW022530.D
 Acq On : 13 Apr 2022 14:35
 Operator : SY/VA
 Sample : N2373-07
 Misc : 5.65g/10mL/MSVOA_W/SOIL
 ALS Vial : 1 Sample Multiplier: 1

Instrument :
 MSVOA_W
 ClientSampleId :
 BFFD8

Integration Parameters: LSCINT.P

Integrator: RTE
 Smoothing : OFF Filtering: 5
 Sampling : 1 Min Area: 0 % of largest Peak
 Start Thrs: 0.2 Max Peaks: 100
 Stop Thrs : 0 Peak Location: TOP

If leading or trailing edge < 100 prefer < Baseline drop else tangent >
 Peak separation: 5

Method : Z:\voasrv\HPCHEM1\MSVOA_W\Method\SFAMWLM040722SMA.M
 Title : SFAM01.0

77	13.761	1942	1945	1946	rBV3	2067	1947	0.22%	0.034%
78	13.853	1952	1960	1970	rBV	162728	277365	31.13%	4.774%
79	14.011	1984	1986	1987	rBV2	1067	925	0.10%	0.016%
80	14.066	1989	1995	2000	rVV2	27728	45517	5.11%	0.783%
81	14.231	2019	2022	2024	rVB3	677	576	0.06%	0.010%
82	14.261	2024	2027	2031	rBV6	1232	2021	0.23%	0.035%
83	14.298	2031	2033	2035	rBV3	1422	1761	0.20%	0.030%
84	14.414	2050	2052	2055	rBV3	803	1056	0.12%	0.018%
85	14.474	2059	2062	2067	rVV7	1626	2671	0.30%	0.046%
86	14.609	2083	2084	2086	rBV2	1044	1043	0.12%	0.018%
87	14.688	2095	2097	2099	rBV3	748	611	0.07%	0.011%
88	14.938	2135	2138	2140	rBV4	563	818	0.09%	0.014%
89	14.956	2140	2141	2145	rVV4	1025	1136	0.13%	0.020%
90	15.048	2154	2156	2158	rBV3	1086	1108	0.12%	0.019%
91	15.176	2175	2177	2178	rBV2	1031	975	0.11%	0.017%
92	15.279	2192	2194	2197	rBV4	890	636	0.07%	0.011%
93	15.395	2210	2213	2217	rBV5	2069	3477	0.39%	0.060%
94	15.487	2221	2228	2234	rBV	42691	76454	8.58%	1.316%
95	15.596	2243	2246	2250	rVB5	1390	1789	0.20%	0.031%
96	15.669	2254	2258	2260	rBV4	1069	1301	0.15%	0.022%
97	15.791	2275	2278	2280	rBV4	2506	2876	0.32%	0.050%
98	16.303	2360	2362	2364	rBV2	1199	1097	0.12%	0.019%
99	16.602	2409	2411	2413	rVB2	1243	1130	0.13%	0.019%
100	16.627	2413	2415	2418	rBV4	1429	1570	0.18%	0.027%

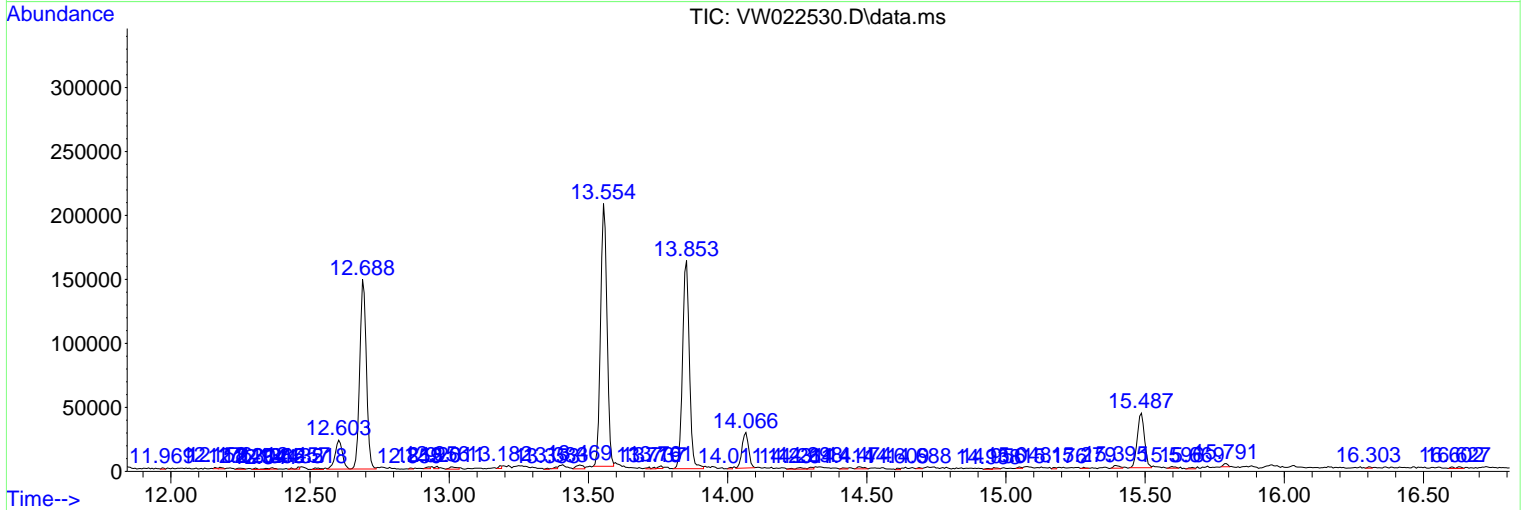
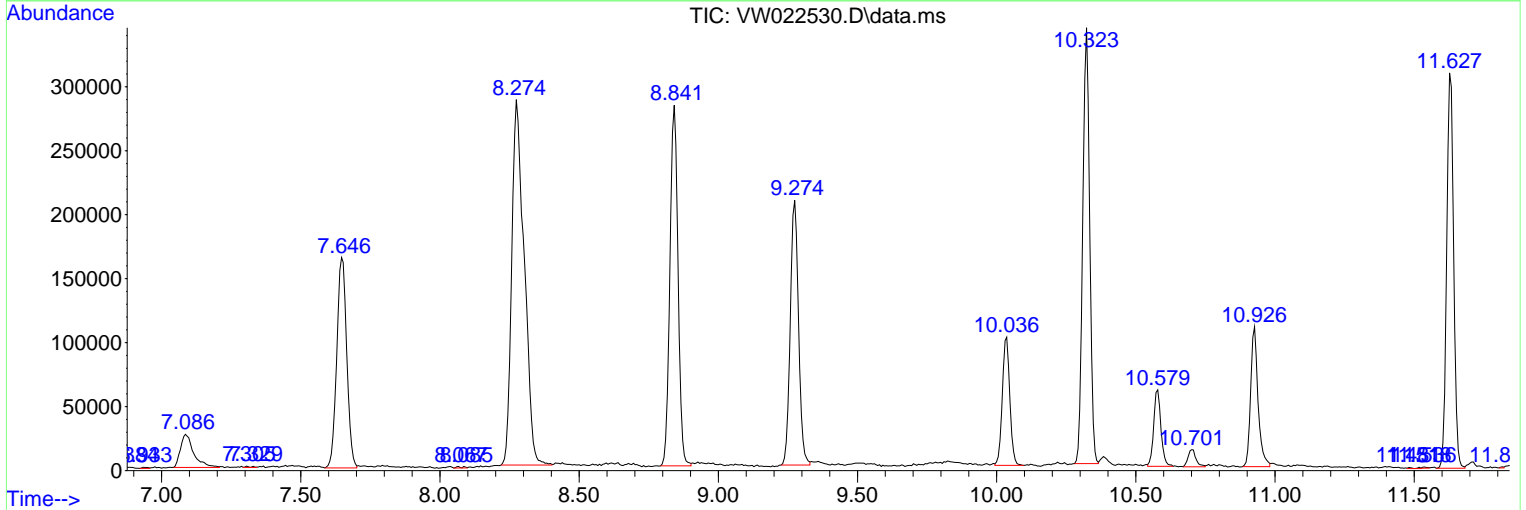
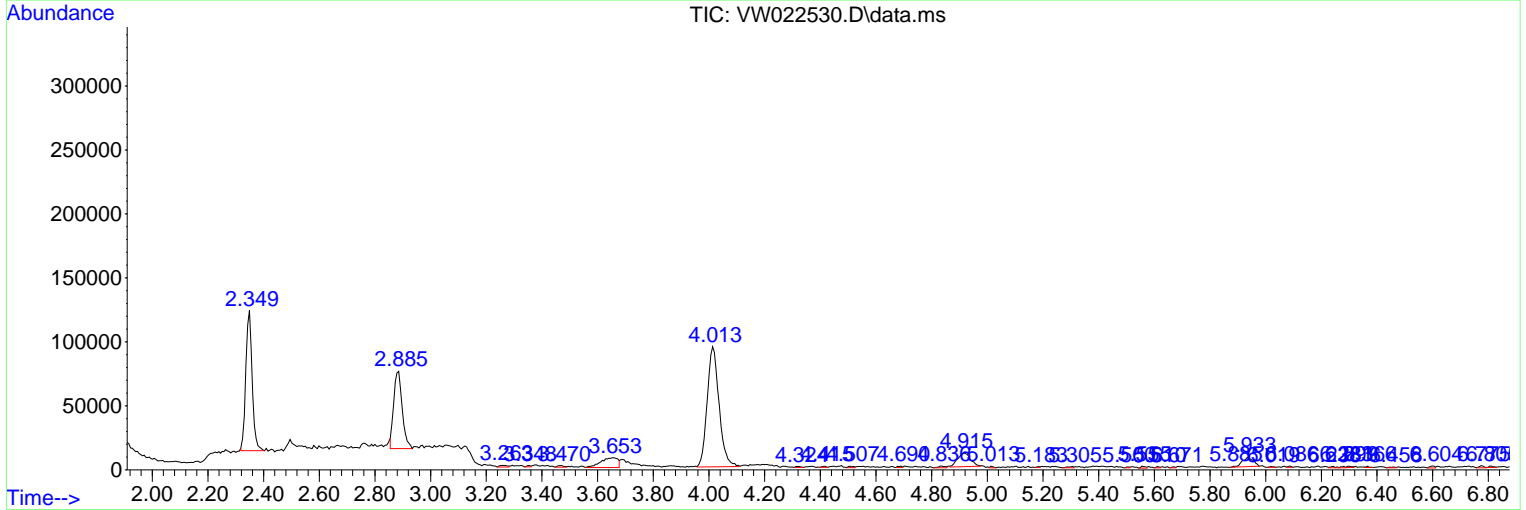
Sum of corrected areas: 5809610

Data Path : Z:\voasrv\HPCHEM1\MSVOA_W\Data\VW041322\
 Data File : VW022530.D
 Acq On : 13 Apr 2022 14:35
 Operator : SY/VA
 Sample : N2373-07
 Misc : 5.65g/10mL/MSVOA_W/SOIL
 ALS Vial : 1 Sample Multiplier: 1

Instrument :
 MSVOA_W
 ClientSampleId :
 BFFD8

Quant Method : Z:\voasrv\HPCHEM1\MSVOA_W\Method\SFAMWLM040722SMA.M
 Quant Title : SFAM01.0

TIC Library : C:\Database\NIST20.L
 TIC Integration Parameters: LSCINT.P



Data Path : Z:\voasrv\HPCHEM1\MSVOA_W\Data\VW041322\
 Data File : VW022530.D
 Acq On : 13 Apr 2022 14:35
 Operator : SY/VA
 Sample : N2373-07
 Misc : 5.65g/10mL/MSVOA_W/SOIL
 ALS Vial : 1 Sample Multiplier: 1

Instrument :
 MSVOA_W
 ClientSampleId :
 BFFD8

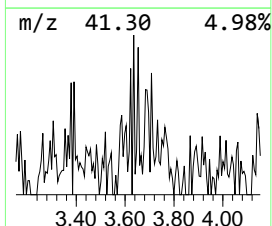
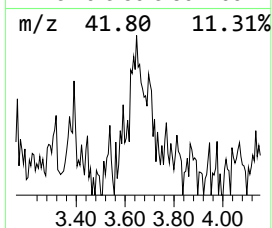
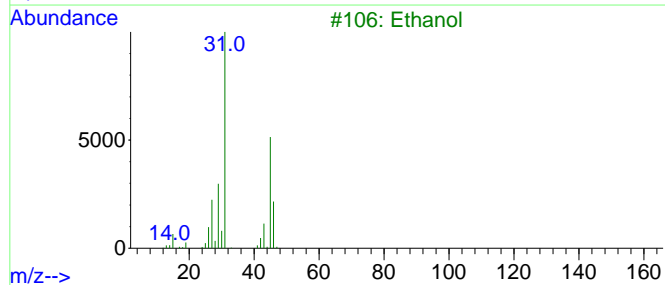
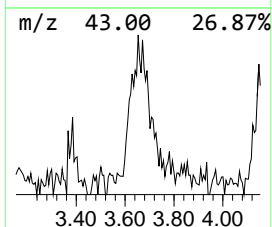
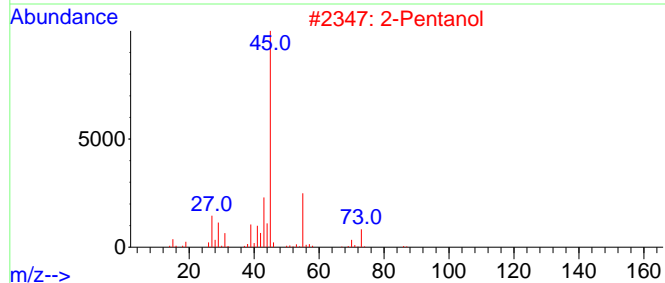
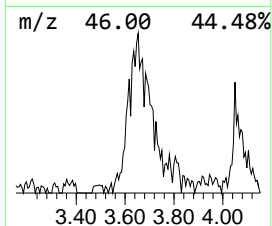
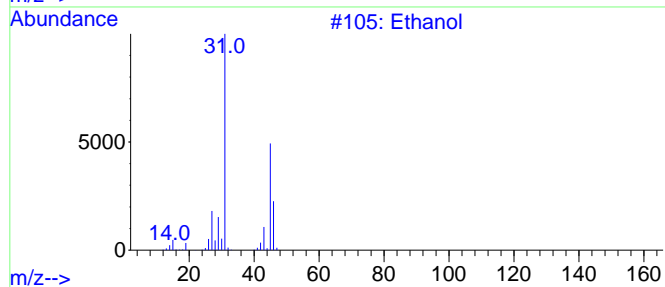
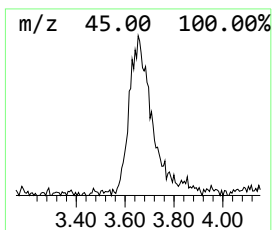
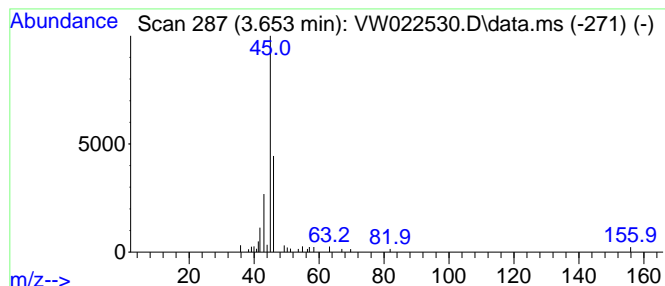
Quant Method : Z:\voasrv\HPCHEM1\MSVOA_W\Method\SFAMWLM040722SMA.M
 Quant Title : SFAM01.0

TIC Library : C:\Database\NIST20.L
 TIC Integration Parameters: LSCINT.P

 Peak Number 1 Ethanol Concentration Rank 6

R.T.	EstConc	Area	Relative to ISTD	R.T.
3.653	1.46 ug/L	33316	1,4-Difluorobenzene	8.841

Hit#	of	5	Tentative ID	MW	MolForm	CAS#	Qual
1			Ethanol	46	C2H6O	000064-17-5	64
2			2-Pentanol	88	C5H12O	006032-29-7	28
3			Ethanol	46	C2H6O	000064-17-5	9
4			Dihydroxyacetic acid	92	C2H4O4	000563-96-2	9
5			2-Pentanol, 4-methyl-	102	C6H14O	000108-11-2	9



Data Path : Z:\voasrv\HPCHEM1\MSVOA_W\Data\VW041322\
Data File : VW022530.D
Acq On : 13 Apr 2022 14:35
Operator : SY/VA
Sample : N2373-07
Misc : 5.65g/10mL/MSVOA_W/SOIL
ALS Vial : 1 Sample Multiplier: 1

Instrument :
MSVOA_W
ClientSampleId :
BFFD8

Quant Method : Z:\voasrv\HPCHEM1\MSVOA_W\Method\SFAMWLM040722SMA.M
Quant Title : SFAM01.0

TIC Library : C:\Database\NIST0.L
TIC Integration Parameters: LSCINT.P

TIC Top Hit name	RT	EstConc	Units	Response	--Internal Standard--			
					#	RT	Resp	Conc
Ethanol	3.653	1.5	ug/L	33316	1	8.841	569312	25.0