

Data Path : Z:\voasrv\HPCHEM1\MSVOA\_W\Data\VW041322\  
 Data File : VW022537.D  
 Acq On : 13 Apr 2022 17:24  
 Operator : SY/VA  
 Sample : N2374-08RE  
 Misc : 5.09g/10mL/MSVOA\_W/SOIL  
 ALS Vial : 1 Sample Multiplier: 1

Instrument :  
 MSVOA\_W  
 ClientSampleId :  
 BFFE4RE

Integration Parameters: LSCINT.P

Integrator: RTE  
 Smoothing : OFF  
 Sampling : 1  
 Start Thrs : 0.2  
 Stop Thrs : 0

Filtering: 5  
 Min Area: 0 % of largest Peak  
 Max Peaks: 100  
 Peak Location: TOP

If leading or trailing edge < 100 prefer < Baseline drop else tangent >  
 Peak separation: 5

Method : Z:\voasrv\HPCHEM1\MSVOA\_W\Method\SFAMWLM040722SMA.M  
 Title : SFAM01.0

Signal : TIC: VW022537.D\data.ms

peak #	R.T. min	first scan	max scan	last scan	PK TY	peak height	corr. area	corr. % max.	% of total
1	2.160	38	42	44	rBV4	1423	1686	0.14%	0.021%
2	2.349	68	73	82	rBV	119102	186490	15.76%	2.268%
3	2.885	155	161	170	rVB	78062	165623	14.00%	2.015%
4	3.410	246	247	250	rVB3	1213	1026	0.09%	0.012%
5	3.501	256	262	264	rVB7	1484	2627	0.22%	0.032%
6	3.611	278	280	284	rVB4	763	1069	0.09%	0.013%
7	3.690	290	293	294	rBV3	1046	1137	0.10%	0.014%
8	3.879	318	324	326	rVB7	848	1618	0.14%	0.020%
9	4.019	333	347	362	rVV2	117528	367467	31.06%	4.470%
10	4.147	366	368	370	rVV3	1263	1274	0.11%	0.015%
11	4.403	407	410	412	rBV2	1503	1292	0.11%	0.016%
12	4.568	431	437	439	rVB7	1359	2122	0.18%	0.026%
13	4.598	439	442	443	rBV	1805	1438	0.12%	0.017%
14	4.635	446	448	451	rBV4	986	1189	0.10%	0.014%
15	4.702	457	459	461	rVB3	1934	1326	0.11%	0.016%
16	4.836	477	481	483	rBV5	1083	1608	0.14%	0.020%
17	4.921	485	495	509	rBV3	17051	59810	5.06%	0.728%
18	5.178	533	537	538	rVB4	972	1025	0.09%	0.012%
19	5.202	538	541	544	rBV3	1216	1466	0.12%	0.018%
20	5.281	551	554	556	rBV	1242	1155	0.10%	0.014%
21	5.427	576	578	581	rVB3	1580	1352	0.11%	0.016%
22	5.458	581	583	585	rBV3	1017	1109	0.09%	0.013%
23	5.531	593	595	598	rBV4	1165	1062	0.09%	0.013%
24	5.775	631	635	639	rBV7	913	1599	0.14%	0.019%
25	5.842	644	646	651	rBV6	690	1300	0.11%	0.016%
26	5.934	653	661	670	rBV4	8153	24140	2.04%	0.294%
27	6.019	672	675	677	rBV4	1036	1219	0.10%	0.015%
28	6.159	694	698	699	rVB4	1305	1521	0.13%	0.019%
29	6.177	699	701	704	rBV4	1389	1855	0.16%	0.023%
30	6.598	767	770	772	rVV3	951	1229	0.10%	0.015%
31	6.866	812	814	818	rVB4	1311	1581	0.13%	0.019%
32	6.903	818	820	825	rVB6	1064	1796	0.15%	0.022%
33	6.952	825	828	830	rBV2	1438	1627	0.14%	0.020%
34	6.988	830	834	835	rVB3	1416	1199	0.10%	0.015%
35	7.080	841	849	871	rBV	29241	104743	8.85%	1.274%
36	7.269	879	880	882	rBV2	1173	1003	0.08%	0.012%

Data Path : Z:\voasrv\HPCHEM1\MSVOA\_W\Data\VW041322\  
 Data File : VW022537.D  
 Acq On : 13 Apr 2022 17:24  
 Operator : SY/VA  
 Sample : N2374-08RE  
 Misc : 5.09g/10mL/MSVOA\_W/SOIL  
 ALS Vial : 1 Sample Multiplier: 1

Instrument :  
 MSVOA\_W  
 ClientSampleId :  
 BFFE4RE

Integration Parameters: LSCINT.P

Integrator: RTE  
 Smoothing : OFF  
 Sampling : 1  
 Start Thrs: 0.2  
 Stop Thrs : 0

Filtering: 5  
 Min Area: 0 % of largest Peak  
 Max Peaks: 100  
 Peak Location: TOP

If leading or trailing edge < 100 prefer < Baseline drop else tangent >  
 Peak separation: 5

Method : Z:\voasrv\HPCHEM1\MSVOA\_W\Method\SFAMWLM040722SMA.M  
 Title : SFAM01.0

37	7.555	925	927	930	rVB4	1697	1546	0.13%	0.019%
38	7.647	933	942	954	rBV	219552	534437	45.18%	6.501%
39	7.805	962	968	969	rBV6	2677	5232	0.44%	0.064%
40	8.031	1002	1005	1007	rBV3	833	1042	0.09%	0.013%
41	8.122	1013	1020	1022	rBV6	2482	4507	0.38%	0.055%
42	8.275	1036	1045	1064	rBV2	381166	1182946	100.00%	14.389%
43	8.622	1098	1102	1107	rBV7	3330	6916	0.58%	0.084%
44	8.841	1130	1138	1147	rBV	401468	812554	68.69%	9.884%
45	9.213	1196	1199	1200	rBV3	1506	1499	0.13%	0.018%
46	9.274	1202	1209	1217	rBV	283671	577059	48.78%	7.019%
47	9.780	1291	1292	1294	rBV2	2026	1530	0.13%	0.019%
48	10.036	1326	1334	1344	rVB	121398	226339	19.13%	2.753%
49	10.219	1357	1364	1367	rBV5	3274	8695	0.74%	0.106%
50	10.323	1373	1381	1388	rBV	508770	881059	74.48%	10.717%
51	10.384	1388	1391	1398	rVB2	9147	15815	1.34%	0.192%
52	10.579	1416	1423	1431	rBV	76833	136501	11.54%	1.660%
53	10.701	1438	1443	1450	rBV2	17244	34477	2.91%	0.419%
54	10.927	1473	1480	1493	rBV	122200	246540	20.84%	2.999%
55	11.225	1527	1529	1531	rBV3	1422	1414	0.12%	0.017%
56	11.347	1548	1549	1553	rVB4	1610	1141	0.10%	0.014%
57	11.433	1560	1563	1565	rBV4	1094	1144	0.10%	0.014%
58	11.628	1587	1595	1604	rVV	511835	862048	72.87%	10.486%
59	11.713	1604	1609	1617	rVB2	6350	11901	1.01%	0.145%
60	11.841	1626	1630	1634	rVB6	2480	4716	0.40%	0.057%
61	11.999	1653	1656	1658	rVB3	1263	1421	0.12%	0.017%
62	12.158	1680	1682	1684	rBV3	1948	1789	0.15%	0.022%
63	12.475	1723	1734	1735	rBV4	19406	38996	3.30%	0.474%
64	12.688	1763	1769	1777	rVB	204565	332914	28.14%	4.050%
65	12.792	1783	1786	1789	rBV5	1388	1611	0.14%	0.020%
66	12.871	1797	1799	1804	rBV5	782	1329	0.11%	0.016%
67	12.944	1804	1811	1812	rBV7	3433	6491	0.55%	0.079%
68	13.030	1821	1825	1831	rVB8	3016	6016	0.51%	0.073%
69	13.152	1844	1845	1846	rBV	2102	1436	0.12%	0.017%
70	13.188	1849	1851	1857	rVB3	7217	9363	0.79%	0.114%
71	13.286	1865	1867	1871	rVB5	3398	4665	0.39%	0.057%
72	13.402	1882	1886	1891	rVB3	9700	15520	1.31%	0.189%
73	13.469	1895	1897	1901	rVB5	2298	2249	0.19%	0.027%
74	13.554	1905	1911	1916	rBV	359607	588268	49.73%	7.156%
75	13.847	1953	1959	1968	rBV	254921	433853	36.68%	5.277%
76	14.066	1990	1995	1998	rBV2	25656	47272	4.00%	0.575%

Data Path : Z:\voasrv\HPCHEM1\MSVOA\_W\Data\VW041322\  
 Data File : VW022537.D  
 Acq On : 13 Apr 2022 17:24  
 Operator : SY/VA  
 Sample : N2374-08RE  
 Misc : 5.09g/10mL/MSVOA\_W/SOIL  
 ALS Vial : 1 Sample Multiplier: 1

Instrument :  
 MSVOA\_W  
 ClientSampleId :  
 BFFE4RE

Integration Parameters: LSCINT.P

Integrator: RTE  
 Smoothing : OFF  
 Sampling : 1  
 Start Thrs : 0.2  
 Stop Thrs : 0

Filtering: 5  
 Min Area: 0 % of largest Peak  
 Max Peaks: 100  
 Peak Location: TOP

If leading or trailing edge < 100 prefer < Baseline drop else tangent >  
 Peak separation: 5

Method : Z:\voasrv\HPCHEM1\MSVOA\_W\Method\SFAMWLM040722SMA.M  
 Title : SFAM01.0

77	14.499	2058	2066	2088	rVB8	27977	132158	11.17%	1.608%
78	14.706	2088	2100	2107	rBV8	8133	25835	2.18%	0.314%
79	14.828	2115	2120	2121	rBV5	1398	1540	0.13%	0.019%
80	14.895	2128	2131	2132	rVV3	1622	1678	0.14%	0.020%
81	14.993	2145	2147	2150	rBV3	1252	1464	0.12%	0.018%
82	15.072	2158	2160	2163	rVB2	1147	1484	0.13%	0.018%
83	15.115	2163	2167	2170	rBV5	1056	1584	0.13%	0.019%
84	15.212	2180	2183	2186	rVB4	1460	1986	0.17%	0.024%
85	15.285	2194	2195	2198	rBV3	1249	1310	0.11%	0.016%
86	15.328	2201	2202	2205	rBV2	858	1009	0.09%	0.012%
87	15.401	2209	2214	2217	rVB5	2321	3559	0.30%	0.043%
88	15.432	2217	2219	2221	rBV3	879	1009	0.09%	0.012%
89	15.481	2223	2227	2233	rBV	11777	19508	1.65%	0.237%
90	15.615	2248	2249	2252	rVB3	1557	1064	0.09%	0.013%
91	15.645	2252	2254	2256	rBV3	1291	1482	0.13%	0.018%
92	15.791	2272	2278	2284	rVB9	2692	5647	0.48%	0.069%
93	15.852	2284	2288	2290	rBV5	819	1208	0.10%	0.015%
94	15.944	2300	2303	2310	rVV9	1501	3080	0.26%	0.037%
95	16.035	2316	2318	2323	rVB5	1412	1599	0.14%	0.019%
96	16.255	2352	2354	2356	rBV3	1128	1270	0.11%	0.015%
97	16.468	2385	2389	2394	rBV7	1173	1575	0.13%	0.019%
98	16.511	2394	2396	2400	rVB5	1448	1087	0.09%	0.013%
99	16.596	2407	2410	2413	rBV5	1205	1360	0.11%	0.017%
100	16.663	2418	2421	2426	rBV5	1594	2401	0.20%	0.029%

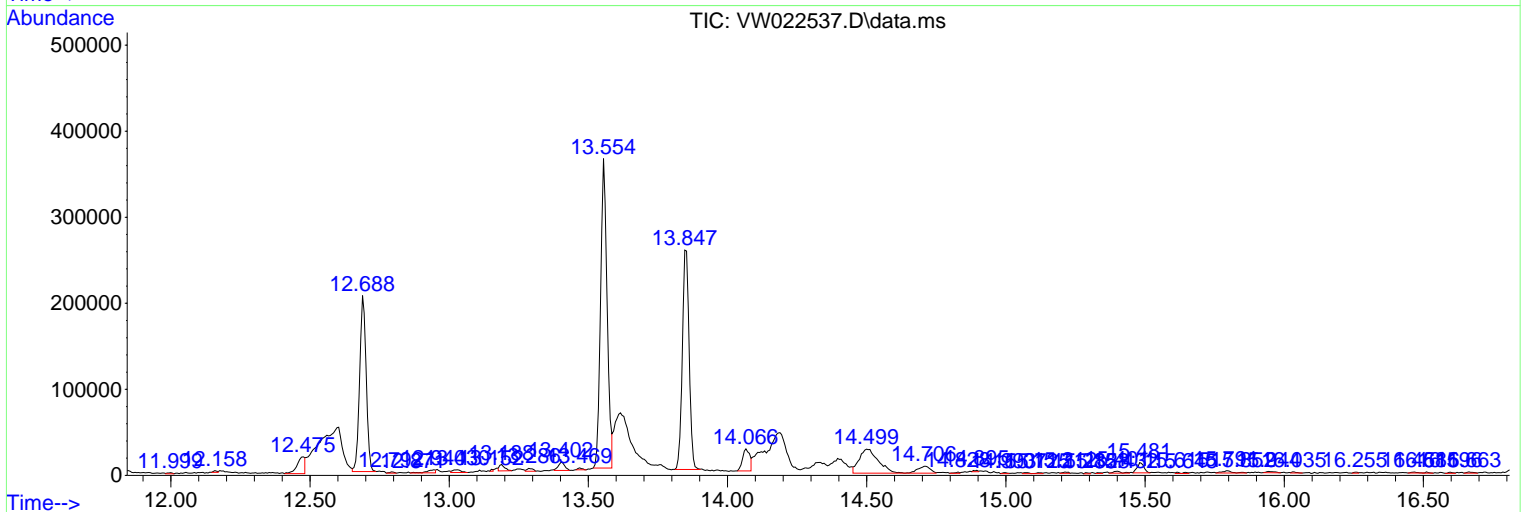
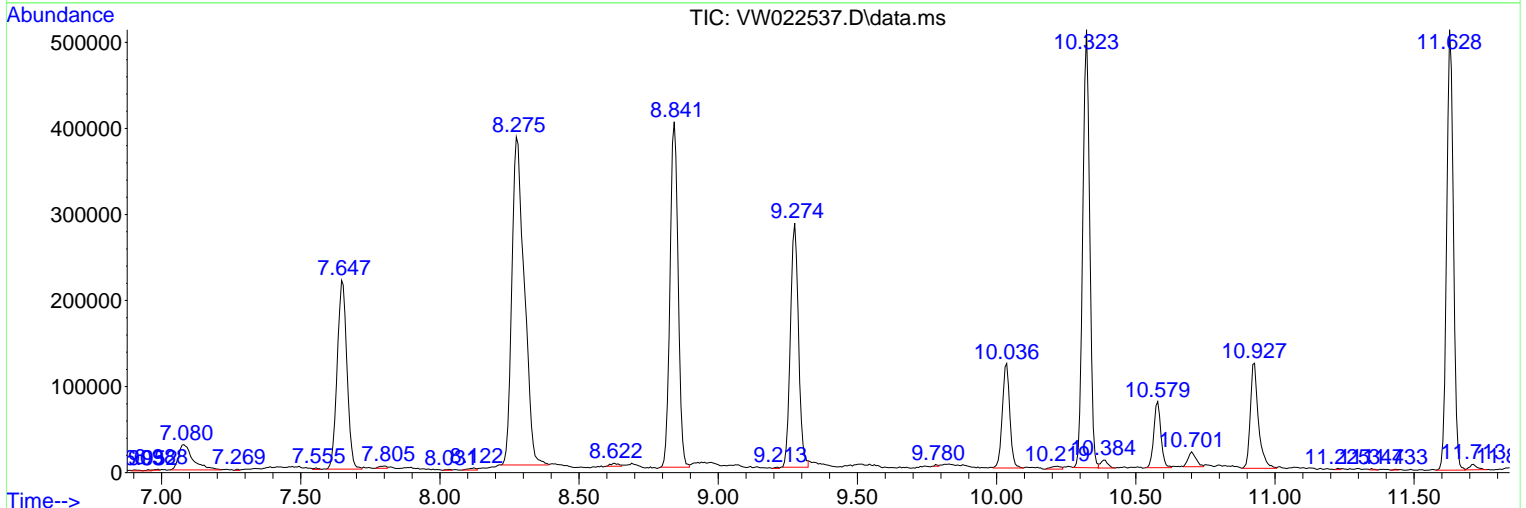
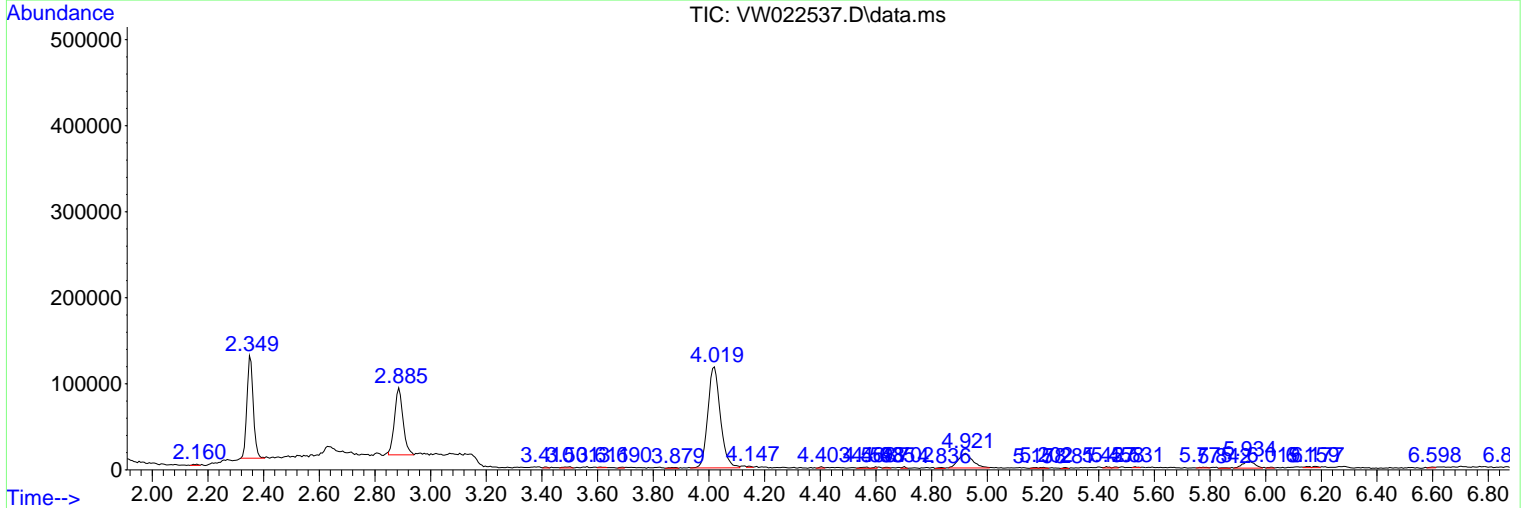
Sum of corrected areas: 8220931

Data Path : Z:\voasrv\HPCHEM1\MSVOA\_W\Data\VW041322\  
 Data File : VW022537.D  
 Acq On : 13 Apr 2022 17:24  
 Operator : SY/VA  
 Sample : N2374-08RE  
 Misc : 5.09g/10mL/MSVOA\_W/SOIL  
 ALS Vial : 1 Sample Multiplier: 1

Instrument :  
 MSVOA\_W  
 ClientSampleId :  
 BFFE4RE

Quant Method : Z:\voasrv\HPCHEM1\MSVOA\_W\Method\SFAMWLM040722SMA.M  
 Quant Title : SFAM01.0

TIC Library : C:\Database\NIST20.L  
 TIC Integration Parameters: LSCINT.P



Data Path : Z:\voasrv\HPCHEM1\MSVOA\_W\Data\VW041322\  
 Data File : VW022537.D  
 Acq On : 13 Apr 2022 17:24  
 Operator : SY/VA  
 Sample : N2374-08RE  
 Misc : 5.09g/10mL/MSVOA\_W/SOIL  
 ALS Vial : 1 Sample Multiplier: 1

Instrument :  
 MSVOA\_W  
 ClientSampleId :  
 BFFE4RE

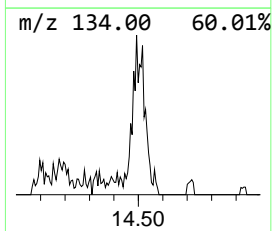
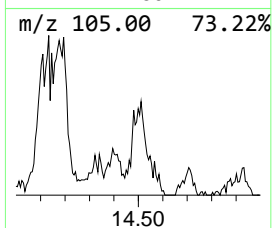
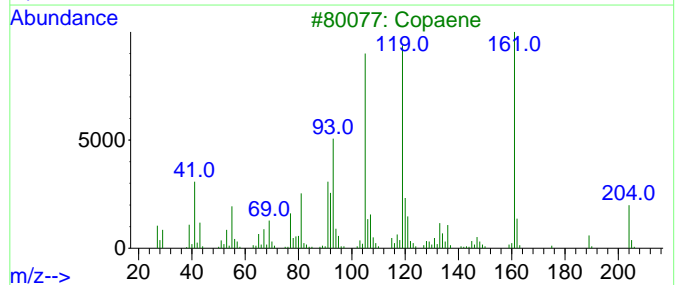
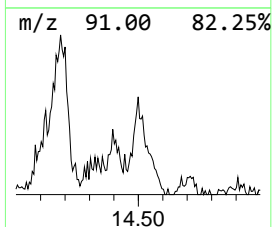
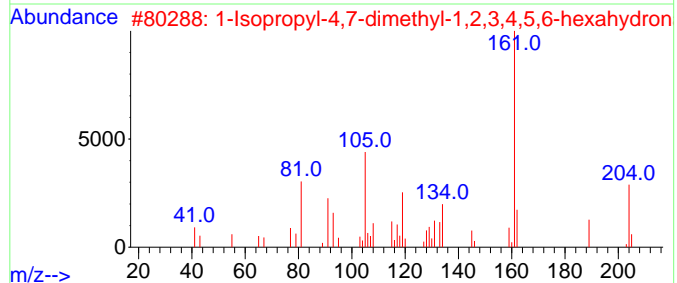
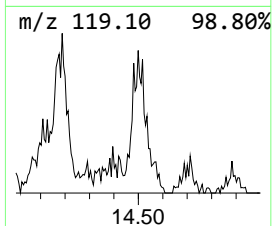
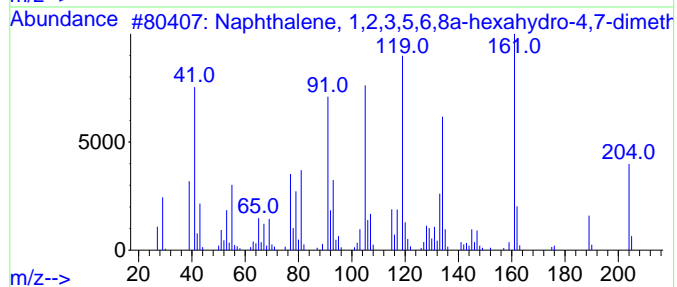
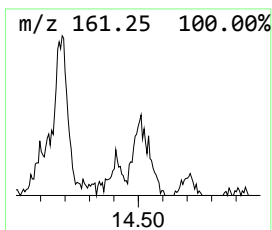
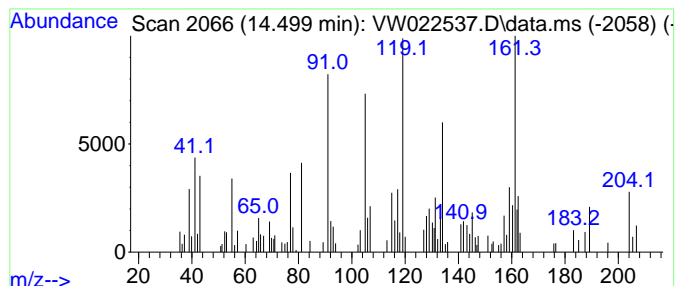
Quant Method : Z:\voasrv\HPCHEM1\MSVOA\_W\Method\SFAMWLM040722SMA.M  
 Quant Title : SFAM01.0

TIC Library : C:\Database\NIST20.L  
 TIC Integration Parameters: LSCINT.P

\*\*\*\*\*  
 Peak Number 4 Naphthalene, 1,2,3,5,6,8a-h... Concentration Rank 2

R.T.	EstConc	Area	Relative to ISTD	R.T.
14.499	5.62 ug/L	132158	1,4-Dichlorobenzene-d4	13.554

Hit#	of	5	Tentative ID	MW	MolForm	CAS#	Qual
1			Naphthalene, 1,2,3,5,6,8a-hexahy...	204	C15H24	000483-76-1	62
2			1-Isopropyl-4,7-dimethyl-1,2,3,4...	204	C15H24	016729-00-3	58
3			Copaene	204	C15H24	003856-25-5	55
4			Naphthalene, 1,2,3,5,6,8a-hexahy...	204	C15H24	000483-76-1	52
5			Zonarene	204	C15H24	041929-05-9	49



Data Path : Z:\voasrv\HPCHEM1\MSVOA\_W\Data\VW041322\  
Data File : VW022537.D  
Acq On : 13 Apr 2022 17:24  
Operator : SY/VA  
Sample : N2374-08RE  
Misc : 5.09g/10mL/MSVOA\_W/SOIL  
ALS Vial : 1 Sample Multiplier: 1

Instrument :  
MSVOA\_W  
ClientSampleId :  
BFFE4RE

Quant Method : Z:\voasrv\HPCHEM1\MSVOA\_W\Method\SFAMWLM040722SMA.M  
Quant Title : SFAM01.0

TIC Library : C:\Database\NIST0.L  
TIC Integration Parameters: LSCINT.P

TIC Top Hit name	RT	EstConc	Units	Response	--Internal Standard--			
					#	RT	Resp	Conc
Naphthalene, 1,...	14.499	5.6	ug/L	132158	3	13.554	588268	25.0