

Data Path : Z:\voasrv\HPCHEM1\MSVOA_W\Data\VW041624\
 Data File : VW028451.D
 Acq On : 16 Apr 2024 14:49
 Operator : SY/MD
 Sample : P2144-12MSD
 Misc : 5.24g/10mL/MSVOA_W/SOIL/LA
 ALS Vial : 1 Sample Multiplier: 1

Instrument :
 MSVOA_W
ClientSampleId :

Quant Time: Apr 17 05:37:09 2024
 Quant Method : Z:\voasrv\HPCHEM1\MSVOA_W\Method\SFAMWLM040824SMA.M
 Quant Title : SFAM01.0
 QLast Update : Wed Apr 17 05:34:21 2024
 Response via : Initial Calibration

Compound	R.T.	QI on	Response	Conc	Units	Dev(Min)
Internal Standards						
1) 1,4-Difluorobenzene	8.843	114	484346	25.000	ug/L	0.00
28) Chlorobenzene-d5	11.629	117	423236	25.000	ug/L	0.00
58) 1,4-Dichlorobenzene-d4	13.549	152	195162	25.000	ug/L	0.00

System Monitoring Compounds						
4) Vinyl chloride-d3	2.369	65	163561	21.064	ug/L	0.00
Spike Amount	25.000	Range	30 - 150	Recovery	=	84.240%
7) Chloroethane-d5	2.899	69	133379	22.663	ug/L	0.00
Spike Amount	25.000	Range	30 - 150	Recovery	=	90.640%
11) 1,1-Dichloroethene-d2	4.021	65	71922	21.873	ug/L	0.00
Spike Amount	25.000	Range	45 - 110	Recovery	=	87.480%
21) 2-Butanone-d5	7.075	46	78969	54.349	ug/L	0.00
Spike Amount	50.000	Range	20 - 135	Recovery	=	108.700%
24) Chloroform-d	7.648	84	310789	24.590	ug/L	0.00
Spike Amount	25.000	Range	40 - 150	Recovery	=	98.360%
26) 1,2-Dichloroethane-d4	8.306	65	166696	25.380	ug/L	0.00
Spike Amount	25.000	Range	70 - 130	Recovery	=	101.520%
32) Benzene-d6	8.276	84	590624	25.545	ug/L	0.00
Spike Amount	25.000	Range	20 - 135	Recovery	=	102.160%
36) 1,2-Dichloropropane-d6	9.276	67	177635	25.847	ug/L	0.00
Spike Amount	25.000	Range	70 - 120	Recovery	=	103.400%
41) Toluene-d8	10.318	98	535979	25.493	ug/L	0.00
Spike Amount	25.000	Range	30 - 130	Recovery	=	101.960%
43) trans-1,3-Dichloropropene	10.574	79	72679	26.596	ug/L	0.00
Spike Amount	25.000	Range	30 - 135	Recovery	=	106.400%
47) 2-Hexanone-d5	10.922	63	55298	58.087	ug/L	0.00
Spike Amount	50.000	Range	20 - 135	Recovery	=	116.180%
56) 1,1,2,2-Tetrachloroethene	12.690	84	130850	26.985	ug/L	0.00
Spike Amount	25.000	Range	45 - 120	Recovery	=	107.960%
66) 1,2-Dichlorobenzene-d4	13.848	152	154277	24.996	ug/L	0.00
Spike Amount	25.000	Range	75 - 120	Recovery	=	100.000%

Target Compounds						Qvalue
2) Dichlorodifluoromethane	2.015	85	165831	25.456	ug/L	98
3) Chloromethane	2.222	50	186616	24.399	ug/L	98
5) Vinyl chloride	2.375	62	215860	23.699	ug/L	99
6) Bromomethane	2.789	94	130108	22.863	ug/L	99
8) Chloroethane	2.936	64	130173	23.708	ug/L	97
9) Trichlorofluoromethane	3.271	101	187774	25.842	ug/L	100
10) 1,1,2-Trichloro-1,2,2-trifluoroethane	4.076	101	163597	23.932	ug/L	96
12) 1,1-Dichloroethene	4.045	96	158513	24.696	ug/L	92
13) Acetone	4.118	43	107334	60.162	ug/L	95
14) Carbon disulfide	4.386	76	485659	22.982	ug/L	100
15) Methyl Acetate	4.667	43	70357	24.509	ug/L	99
16) Methylene chloride	4.923	84	159056	21.702	ug/L	99
17) trans-1,2-Dichloroethene	5.429	96	164760	24.368	ug/L	97
18) Methyl tert-butyl Ether	5.429	73	249219	26.203	ug/L	99
19) 1,1-Dichloroethane	6.222	63	325660	24.721	ug/L	99
20) cis-1,2-Dichloroethene	7.173	96	179025	24.948	ug/L	97
22) 2-Butanone	7.166	43	114195	52.743	ug/L	98
23) Bromochloromethane	7.514	128	73081	23.644	ug/L	88
25) Chloroform	7.679	83	320439	24.762	ug/L	95

Data Path : Z:\voasrv\HPCHEM1\MSVOA_W\Data\VW041624\
 Data File : VW028451.D
 Acq On : 16 Apr 2024 14:49
 Operator : SY/MD
 Sample : P2144-12MSD
 Misc : 5.24g/10mL/MSVOA_W/SOIL/A
 ALS Vial : 1 Sample Multiplier: 1

Instrument :
 MSVOA_W
 ClientSampleId :

Quant Time: Apr 17 05:37:09 2024
 Quant Method : Z:\voasrv\HPCHEM1\MSVOA_W\Method\SFAMWLM040824SMA.M
 Quant Title : SFAM01.0
 QLast Update : Wed Apr 17 05:34:21 2024
 Response via : Initial Calibration

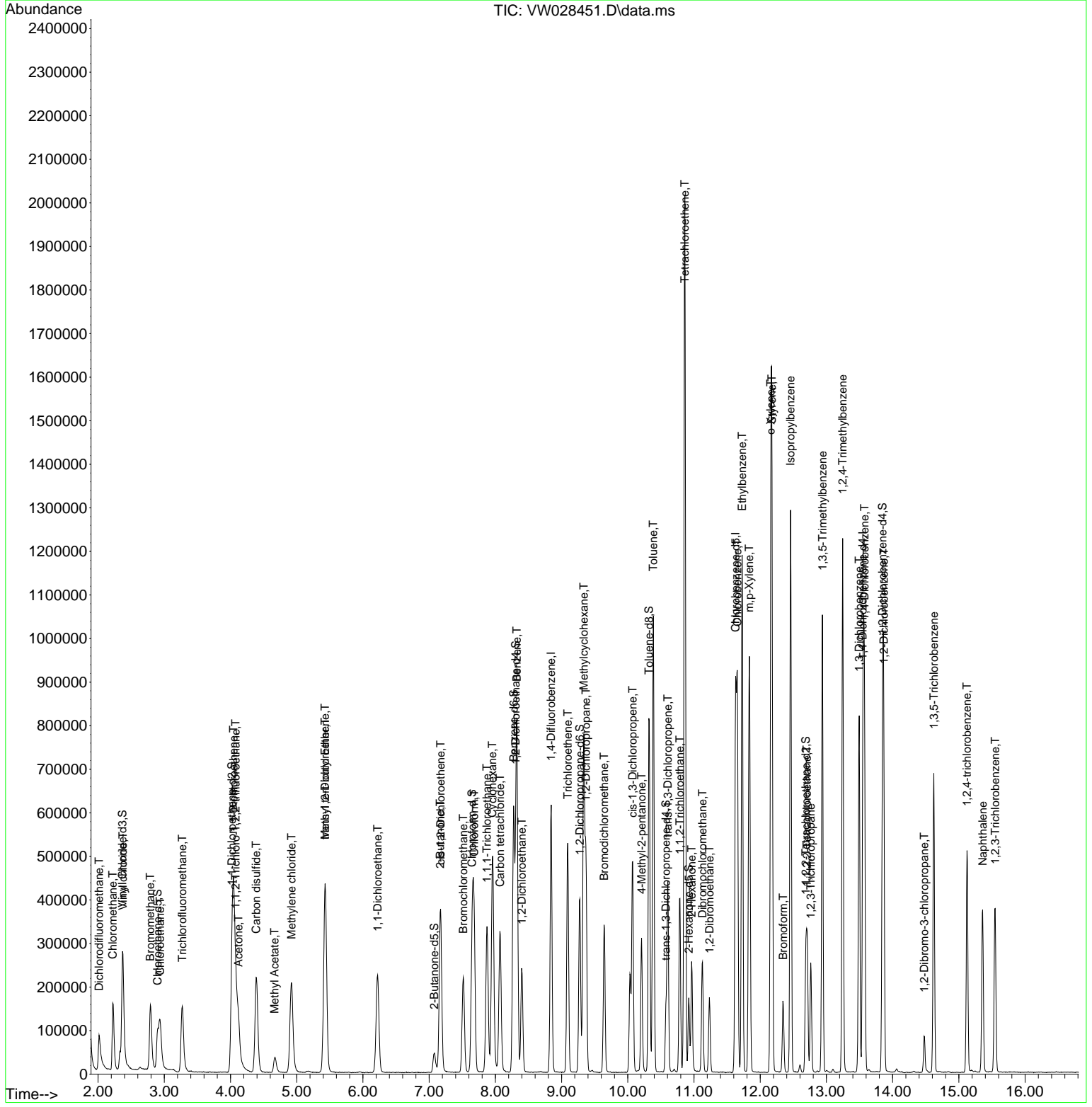
Compound	R. T.	QI on	Response	Conc	Units	Dev(Min)
27) 1,2-Dichloroethane	8.398	62	215257	24.101	ug/L	99
29) Cyclohexane	7.953	56	292738	26.185	ug/L	100
30) 1,1,1-Trichloroethane	7.874	97	266277	25.941	ug/L	99
31) Carbon tetrachloride	8.069	117	239286	26.289	ug/L	99
33) Benzene	8.325	78	677465	25.601	ug/L	100
34) Trichloroethene	9.093	95	181488	25.308	ug/L	99
35) Methylcyclohexane	9.337	83	291740	23.840	ug/L	99
37) 1,2-Dichloropropane	9.367	63	175666	25.470	ug/L	99
38) Bromodichloromethane	9.642	83	223473	26.141	ug/L	98
39) cis-1,3-Dichloropropene	10.074	75	278118	27.498	ug/L	100
40) 4-Methyl-2-pentanone	10.209	43	198933	57.618	ug/L	98
42) Toluene	10.385	91	710611	25.348	ug/L	99
44) trans-1,3-Dichloropropene	10.605	75	222225	27.160	ug/L	97
45) 1,1,2-Trichloroethane	10.788	97	117663	25.216	ug/L	95
46) Tetrachloroethene	10.861	164	422619	78.897	ug/L	82
48) 2-Hexanone	10.965	43	160914	58.716	ug/L	96
49) Dibromochloromethane	11.129	129	128114	25.688	ug/L	96
50) 1,2-Dibromoethane	11.233	107	110533	25.954	ug/L	92
51) Chlorobenzene	11.653	112	431987	24.791	ug/L	97
52) Ethylbenzene	11.727	91	810790	25.514	ug/L	99
53) m,p-Xylene	11.836	106	295450	25.000	ug/L	94
54) o-Xylene	12.159	106	283794	25.791	ug/L	96
55) Styrene	12.178	104	482605	25.769	ug/L	98
57) 1,1,2,2-Tetrachloroethane	12.708	83	136328	25.817	ug/L	97
59) Bromoform	12.348	173	71274	27.667	ug/L	99
60) Isopropylbenzene	12.458	105	792441	27.084	ug/L	99
61) 1,2,3-Trichloropropane	12.763	75	96889	27.154	ug/L	99
62) 1,3,5-Triethylbenzene	12.940	105	521817	27.982	ug/L	100
63) 1,2,4-Triethylbenzene	13.245	105	613908	27.355	ug/L	100
64) 1,3-Dichlorobenzene	13.495	146	311759	25.112	ug/L	96
65) 1,4-Dichlorobenzene	13.574	146	307832	24.376	ug/L	90
67) 1,2-Dichlorobenzene	13.866	146	267400	24.487	ug/L	86
68) 1,2-Dibromo-3-chloropropane	14.476	75	20906	25.569	ug/L	89
69) 1,3,5-Triethylbenzene	14.622	180	193239	22.620	ug/L	98
70) 1,2,4-triethylbenzene	15.122	180	145603	21.825	ug/L	89
71) Naphthalene	15.360	128	308014	26.088	ug/L	100
72) 1,2,3-Triethylbenzene	15.549	180	120062	20.281	ug/L	97

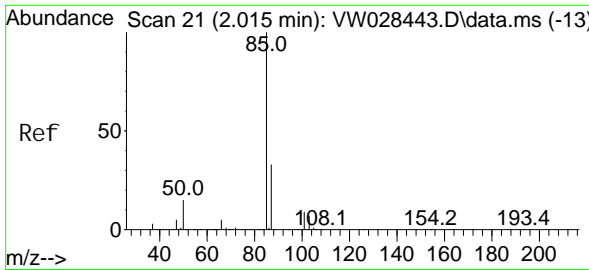
(#) = qualifier out of range (m) = manual integration (+) = signals summed

Data Path : Z:\voasrv\HPCHEM1\MSVOA_W\Data\VW041624\
 Data File : VW028451.D
 Acq On : 16 Apr 2024 14: 49
 Operator : SY/MD
 Sample : P2144-12MSD
 Misc : 5. 24g/10mL/MSVOA_W/SOIL/A
 ALS Vial : 1 Sample Multiplier: 1

Instrument :
 MSVOA_W
 ClientSampleId :

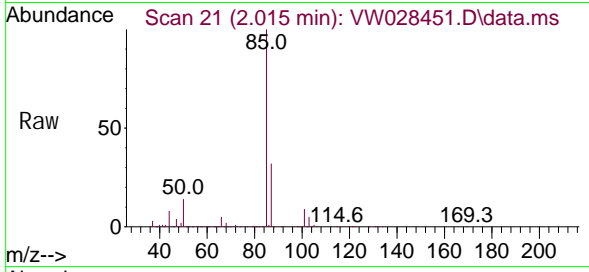
Quant Time: Apr 17 05: 37: 09 2024
 Quant Method : Z:\voasrv\HPCHEM1\MSVOA_W\Method\SFAMWLM040824SMA. M
 Quant Title : SFAM01. 0
 QLast Update : Wed Apr 17 05: 34: 21 2024
 Response via : Initial Calibration



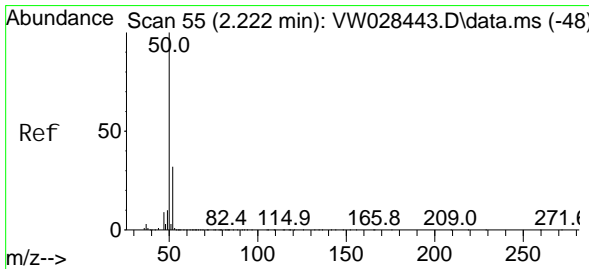
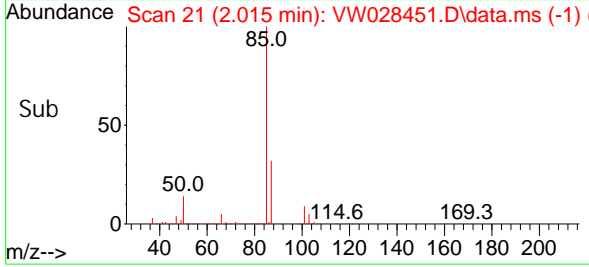
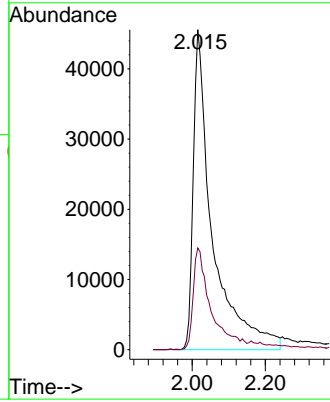


#2
 Di chl orodi fluoromethane
 Concen: 25.456 ug/L
 RT: 2.015 min Scan# 21
 Delta R.T. 0.000 min
 Lab File: VW028451.D
 Acq: 16 Apr 2024 14:49

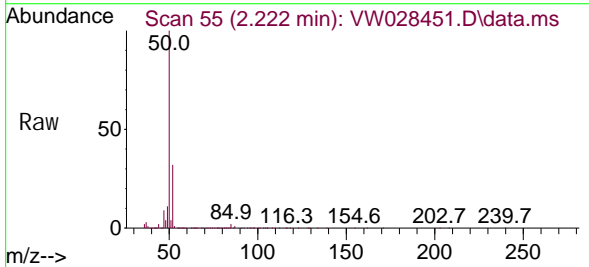
Instrument :
 MSVOA_W
 ClientSampleId :



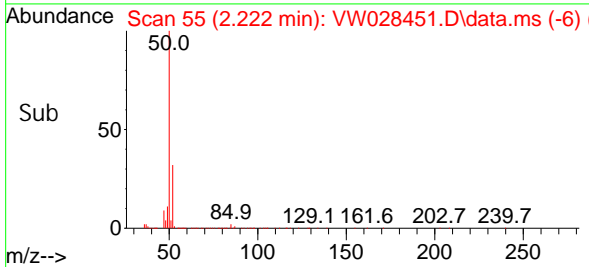
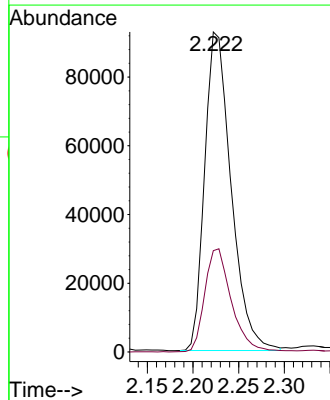
Tgt Ion: 85 Resp: 165831
 Ion Ratio Lower Upper
 85 100
 87 27.9 23.4 35.0

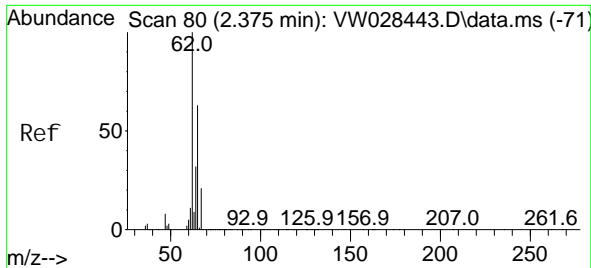


#3
 Chloromethane
 Concen: 24.399 ug/L
 RT: 2.222 min Scan# 55
 Delta R.T. 0.000 min
 Lab File: VW028451.D
 Acq: 16 Apr 2024 14:49



Tgt Ion: 50 Resp: 186616
 Ion Ratio Lower Upper
 50 100
 52 31.7 23.0 42.6

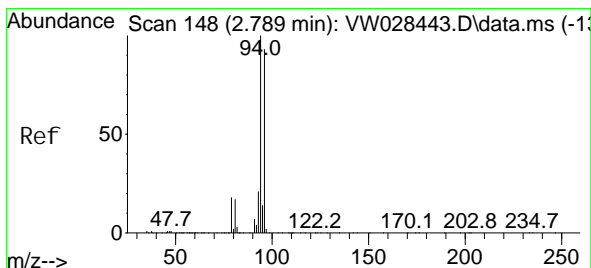
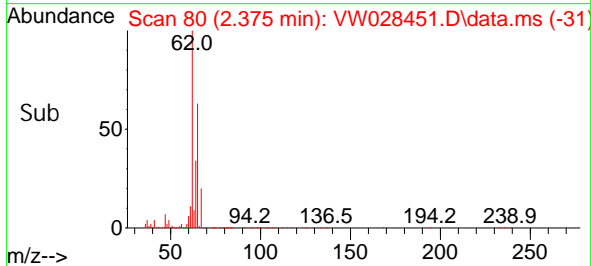
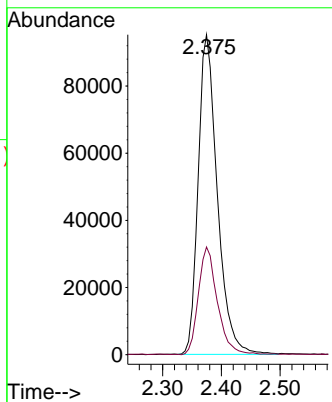
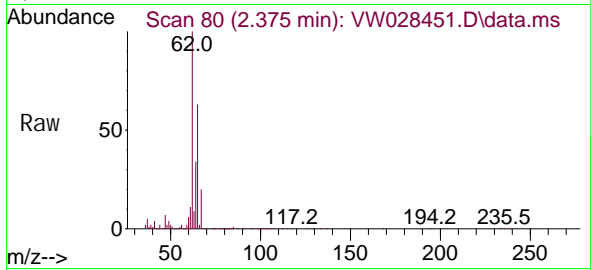




#5
 Vinyl chloride
 Concen: 23.699 ug/L
 RT: 2.375 min Scan# 80
 Delta R.T. 0.000 min
 Lab File: VW028451.D
 Acq: 16 Apr 2024 14:49

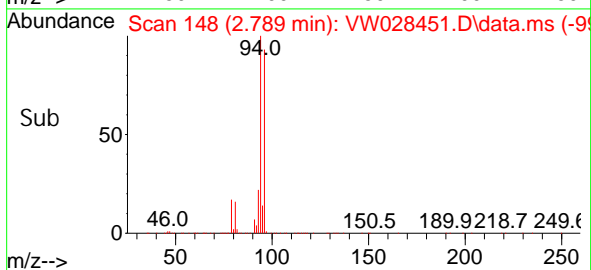
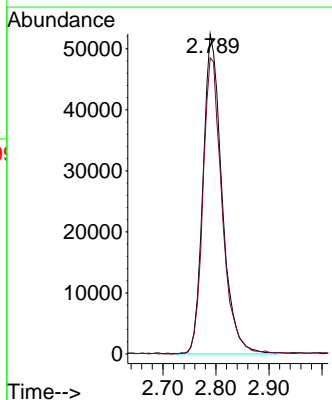
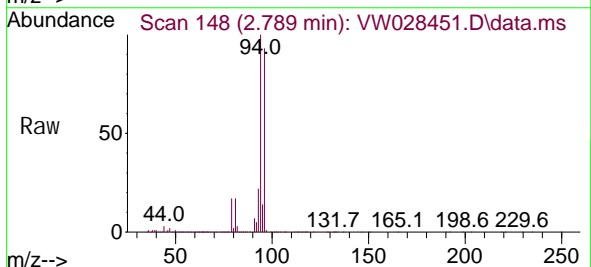
Instrument :
 MSVOA_W
 ClientSampleId :

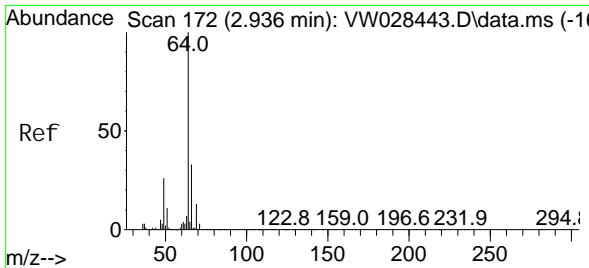
Tgt Ion: 62 Resp: 215860
 Ion Ratio Lower Upper
 62 100
 64 33.7 23.1 42.9



#6
 Bromomethane
 Concen: 22.863 ug/L
 RT: 2.789 min Scan# 148
 Delta R.T. 0.000 min
 Lab File: VW028451.D
 Acq: 16 Apr 2024 14:49

Tgt Ion: 94 Resp: 130108
 Ion Ratio Lower Upper
 94 100
 96 92.5 64.3 119.5

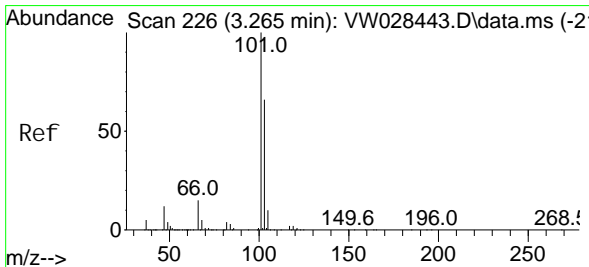
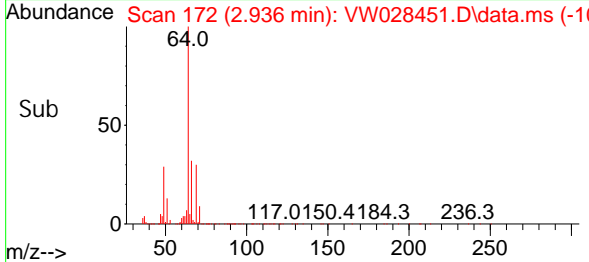
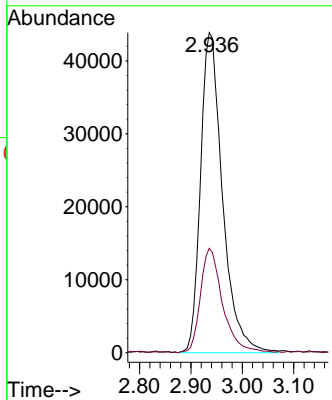
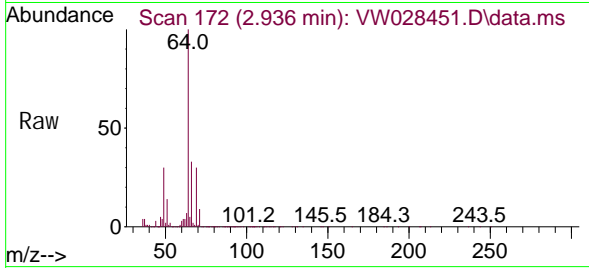




#8
 Chloroethane
 Concen: 23.708 ug/L
 RT: 2.936 min Scan# 172
 Delta R.T. 0.000 min
 Lab File: VW028451.D
 Acq: 16 Apr 2024 14:49

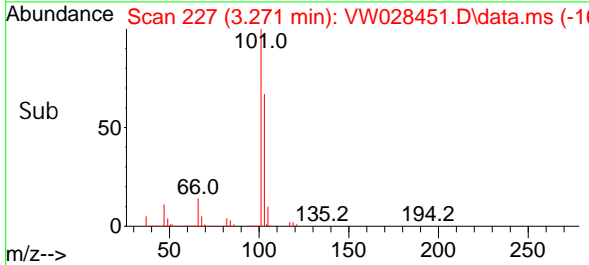
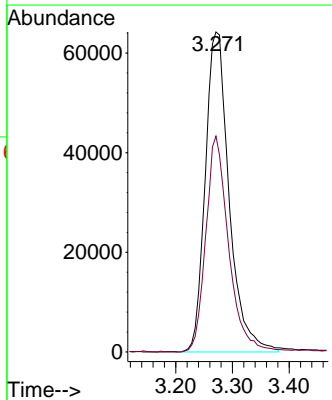
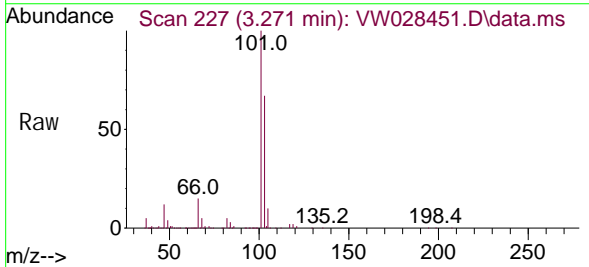
Instrument : MSVOA_W
 ClientSampleId :

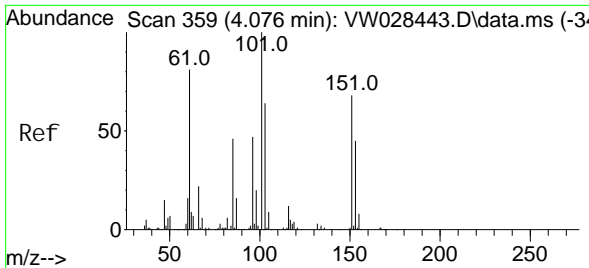
Tgt Ion: 64 Resp: 130173
 Ion Ratio Lower Upper
 64 100
 66 32.6 21.7 40.3



#9
 Trichlorofluoromethane
 Concen: 25.842 ug/L
 RT: 3.271 min Scan# 227
 Delta R.T. 0.006 min
 Lab File: VW028451.D
 Acq: 16 Apr 2024 14:49

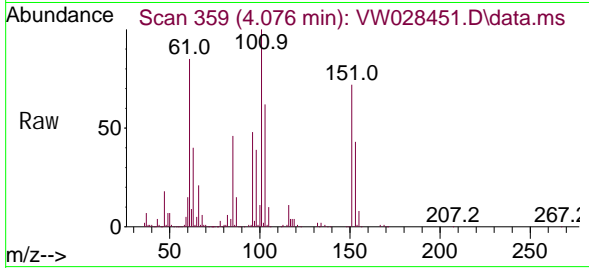
Tgt Ion: 101 Resp: 187774
 Ion Ratio Lower Upper
 101 100
 103 64.7 52.0 78.0



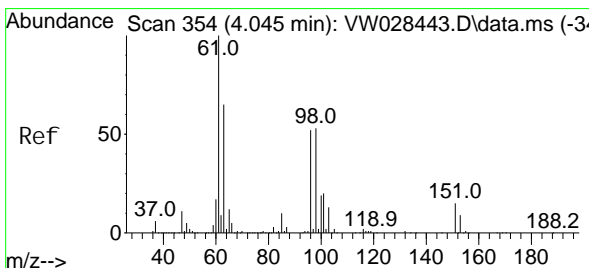
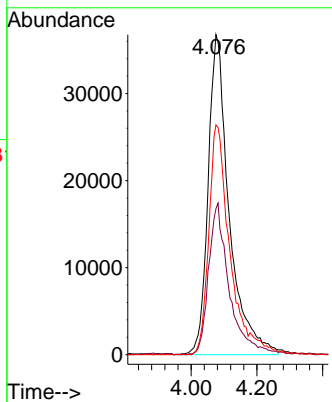
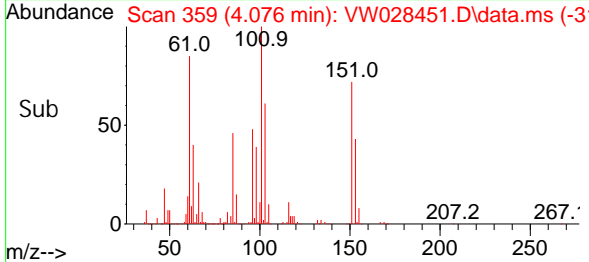


#10
 1,1,2-Tri chloro-1,2,2-tri fluoroethane
 Concen: 23.932 ug/L
 RT: 4.076 min Scan# 359
 Delta R.T. 0.000 min
 Lab File: VW028451.D
 Acq: 16 Apr 2024 14:49

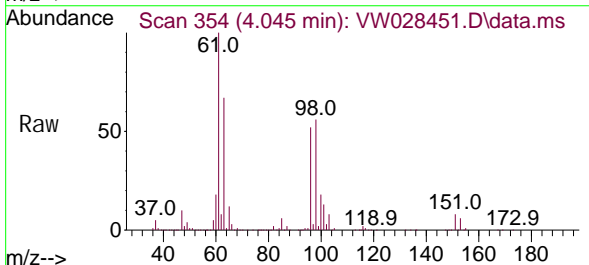
Instrument :
 MSVOA_W
 ClientSampleId :



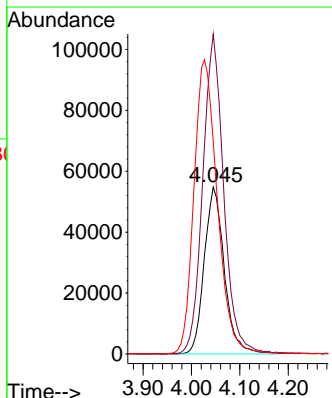
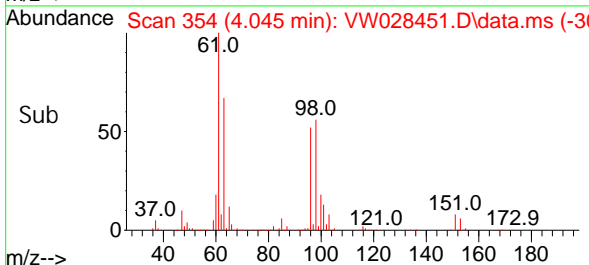
Tgt Ion	Resp	Lower	Upper
101	163597		
101	100		
85	44.7	34.5	51.7
151	67.4	57.5	86.3

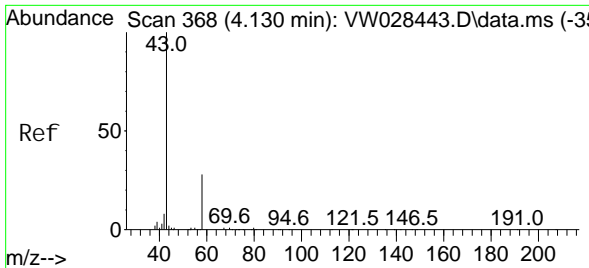


#12
 1,1-Di chloroethene
 Concen: 24.696 ug/L
 RT: 4.045 min Scan# 354
 Delta R.T. 0.000 min
 Lab File: VW028451.D
 Acq: 16 Apr 2024 14:49



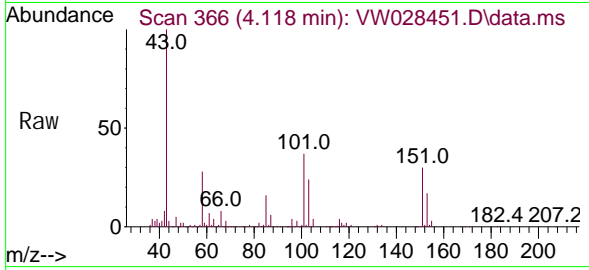
Tgt Ion	Resp	Lower	Upper
96	158513		
96	100		
61	191.7	130.5	242.5
63	127.5	101.5	188.5



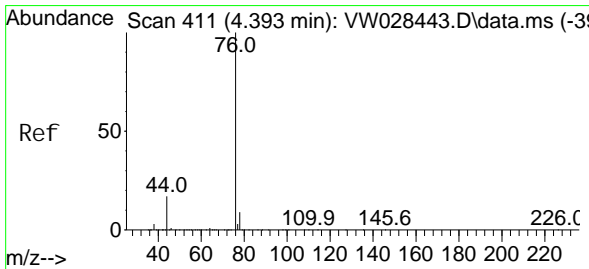
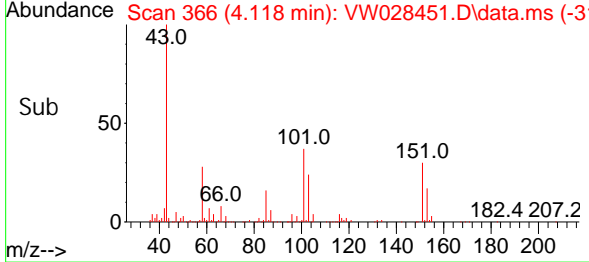
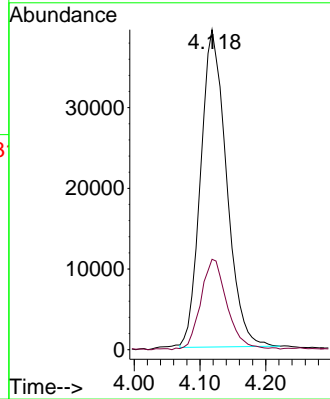


#13
 Acetone
 Concen: 60.162 ug/L
 RT: 4.118 min Scan# 30
 Delta R.T. -0.012 min
 Lab File: VW028451.D
 Acq: 16 Apr 2024 14: 49

Instrument :
 MSVOA_W
 ClientSampleId :

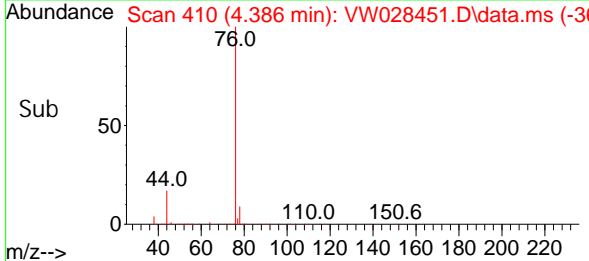
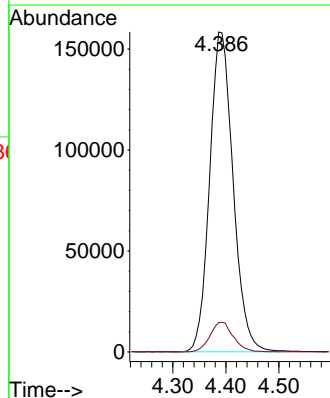
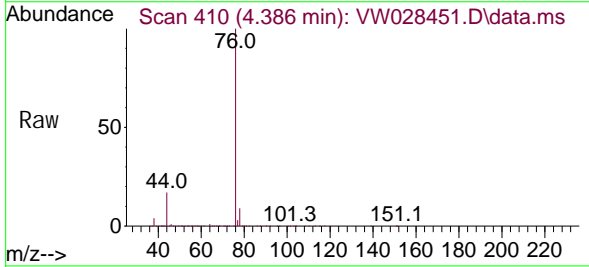


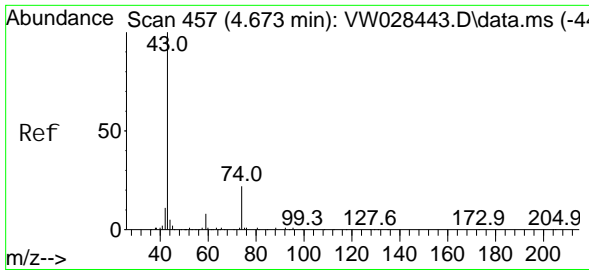
Tgt Ion: 43 Resp: 107334
 Ion Ratio Lower Upper
 43 100
 58 29.0 0.0 53.4



#14
 Carbon di sul fi de
 Concen: 22.982 ug/L
 RT: 4.386 min Scan# 410
 Delta R.T. -0.006 min
 Lab File: VW028451.D
 Acq: 16 Apr 2024 14: 49

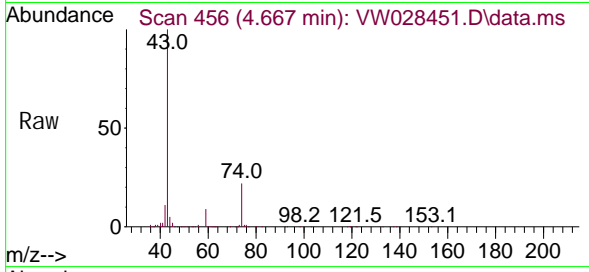
Tgt Ion: 76 Resp: 485659
 Ion Ratio Lower Upper
 76 100
 78 9.2 7.3 10.9



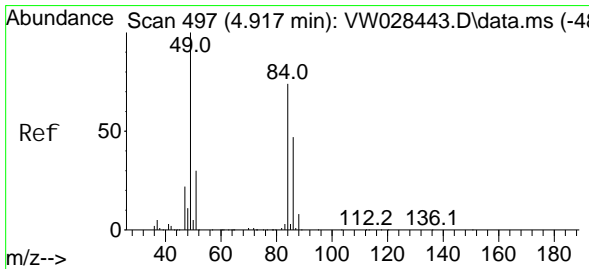
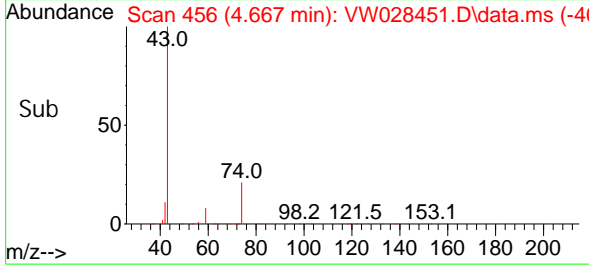
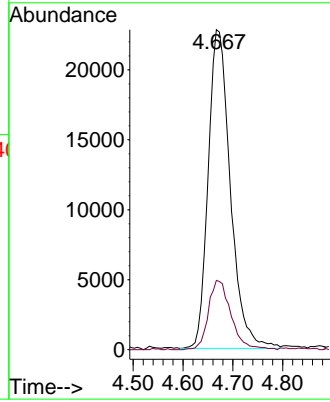


#15
Methyl Acetate
Concen: 24.509 ug/L
RT: 4.667 min Scan# 41
Delta R.T. -0.006 min
Lab File: VW028451.D
Acq: 16 Apr 2024 14:49

Instrument :
MSVOA_W
ClientSampleId :

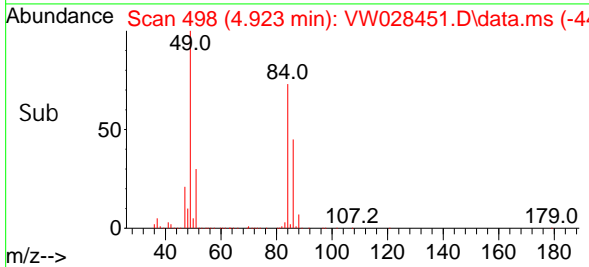
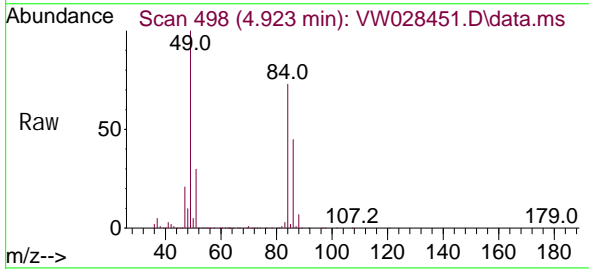
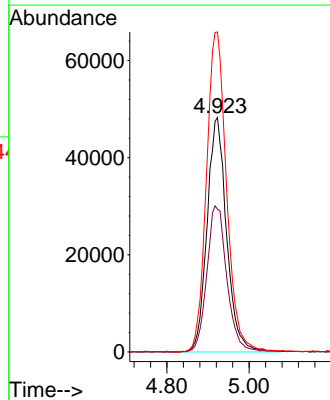


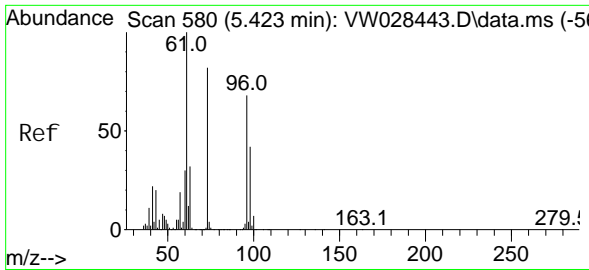
Tgt Ion: 43 Resp: 70357
Ion Ratio Lower Upper
43 100
74 22.1 17.4 26.0



#16
Methylene chloride
Concen: 21.702 ug/L
RT: 4.923 min Scan# 498
Delta R.T. 0.006 min
Lab File: VW028451.D
Acq: 16 Apr 2024 14:49

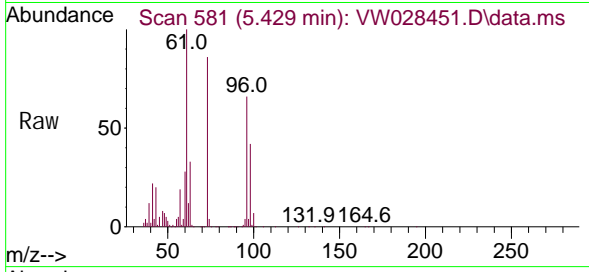
Tgt Ion: 84 Resp: 159056
Ion Ratio Lower Upper
84 100
86 60.9 44.2 82.0
49 136.5 95.0 176.4



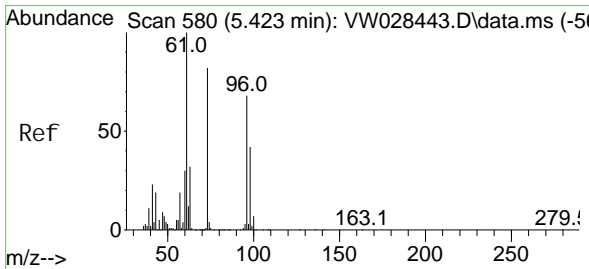
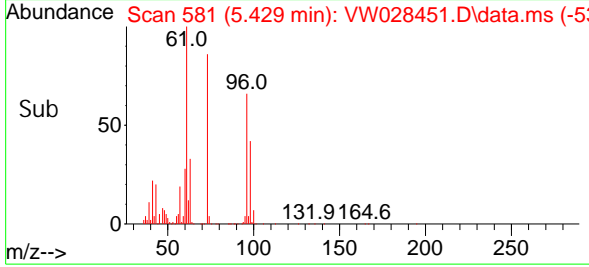
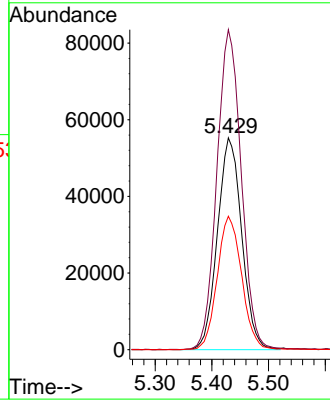


#17
 trans-1, 2-Di chloroethene
 Concen: 24.368 ug/L
 RT: 5.429 min Scan# 581
 Delta R.T. 0.006 min
 Lab File: VW028451.D
 Acq: 16 Apr 2024 14:49

Instrument :
 MSVOA_W
 ClientSampleId :

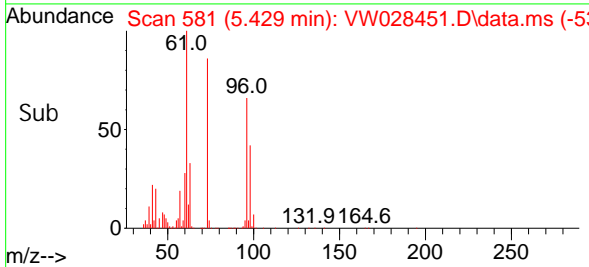
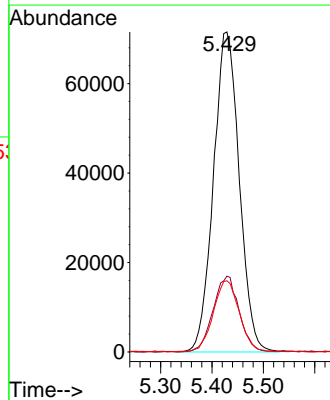
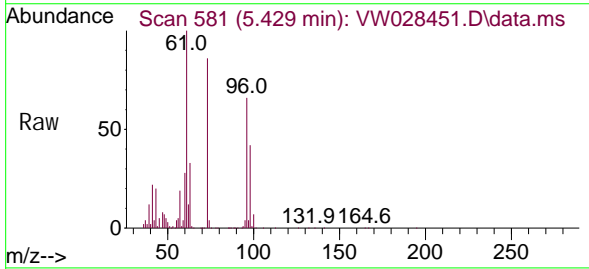


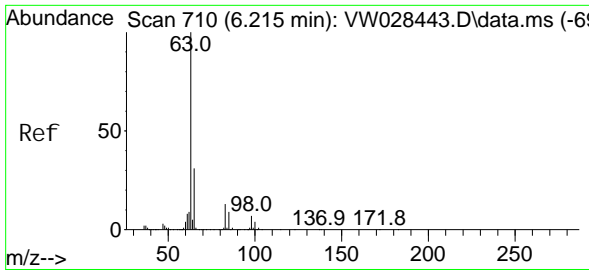
Tgt Ion: 96 Resp: 164760
 Ion Ratio Lower Upper
 96 100
 61 151.1 108.4 201.4
 98 63.0 45.6 84.8



#18
 Methyl tert-butyl Ether
 Concen: 26.203 ug/L
 RT: 5.429 min Scan# 581
 Delta R.T. 0.006 min
 Lab File: VW028451.D
 Acq: 16 Apr 2024 14:49

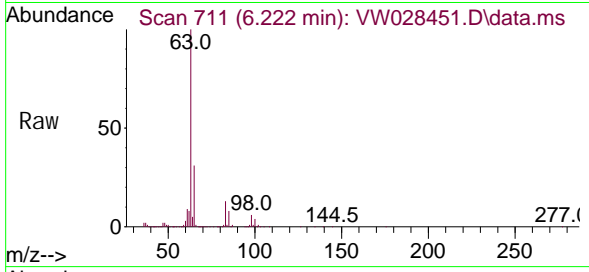
Tgt Ion: 73 Resp: 249219
 Ion Ratio Lower Upper
 73 100
 43 23.3 18.5 27.7
 57 22.4 18.2 27.4



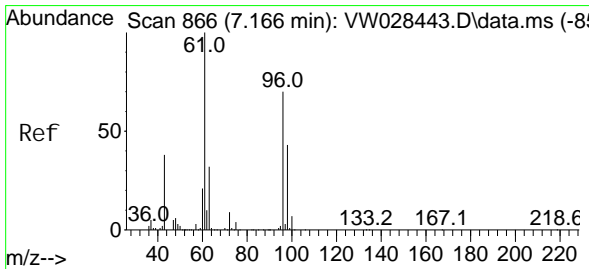
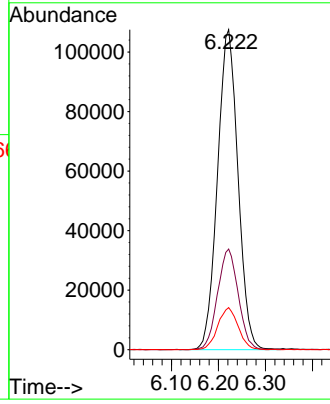
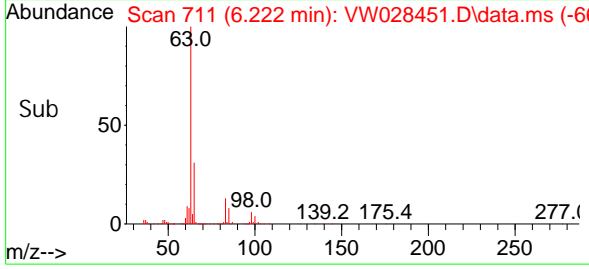


#19
 1,1-Dichloroethane
 Concen: 24.721 ug/L
 RT: 6.222 min Scan# 711
 Delta R.T. 0.006 min
 Lab File: VW028451.D
 Acq: 16 Apr 2024 14:49

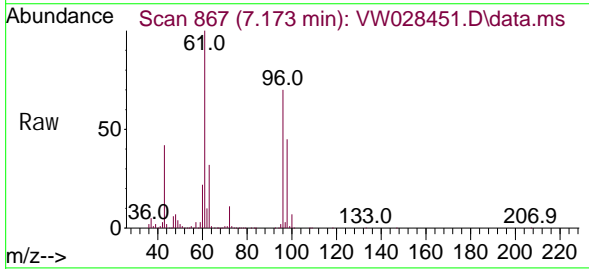
Instrument :
 MSVOA_W
 ClientSampleId :



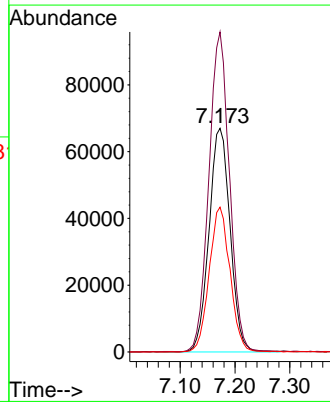
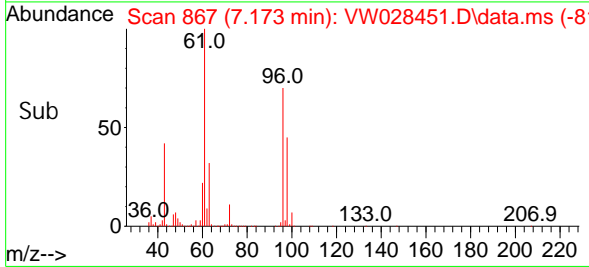
Tgt Ion: 63 Resp: 325660
 Ion Ratio Lower Upper
 63 100
 65 31.5 21.8 40.4
 83 13.2 9.0 16.8

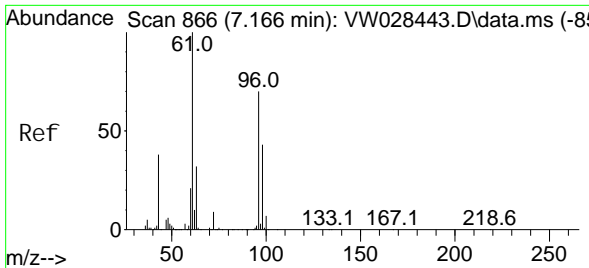


#20
 cis-1,2-Dichloroethene
 Concen: 24.948 ug/L
 RT: 7.173 min Scan# 867
 Delta R.T. 0.006 min
 Lab File: VW028451.D
 Acq: 16 Apr 2024 14:49



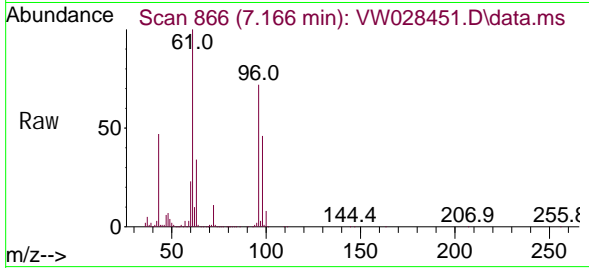
Tgt Ion: 96 Resp: 179025
 Ion Ratio Lower Upper
 96 100
 61 143.1 97.6 181.2
 98 64.7 47.7 88.5



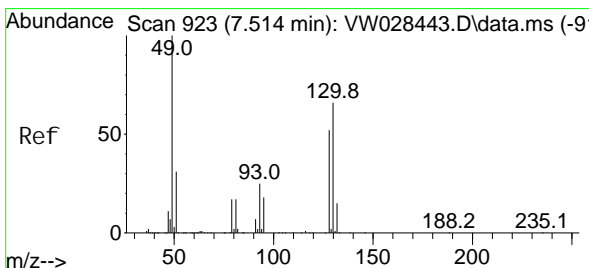
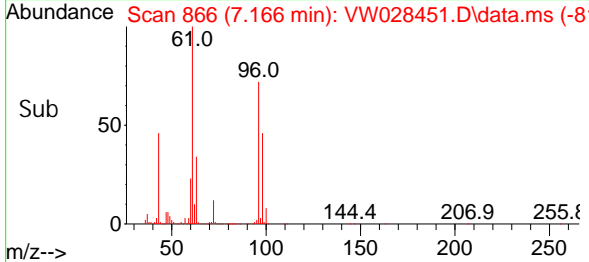
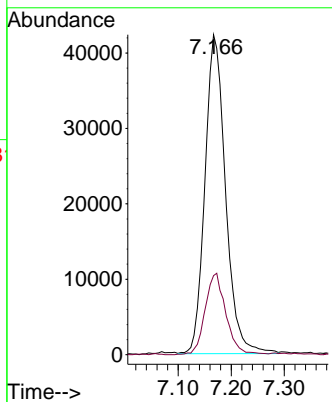


#22
 2-Butanone
 Concen: 52.743 ug/L
 RT: 7.166 min Scan# 866
 Delta R.T. 0.000 min
 Lab File: VW028451.D
 Acq: 16 Apr 2024 14:49

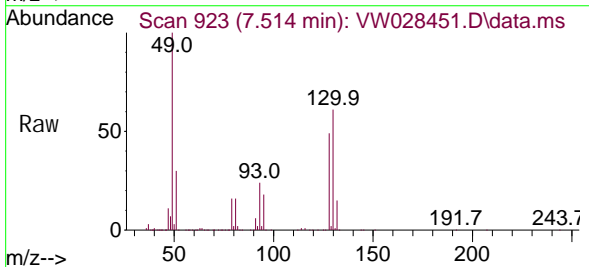
Instrument : MSVOA_W
 ClientSampleId :



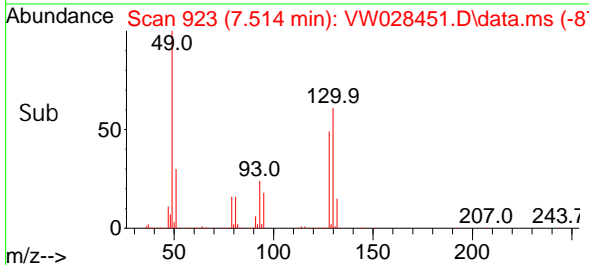
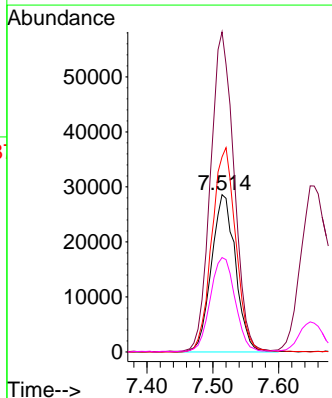
Tgt Ion: 43 Resp: 114195
 Ion Ratio Lower Upper
 43 100
 72 24.8 12.8 38.4

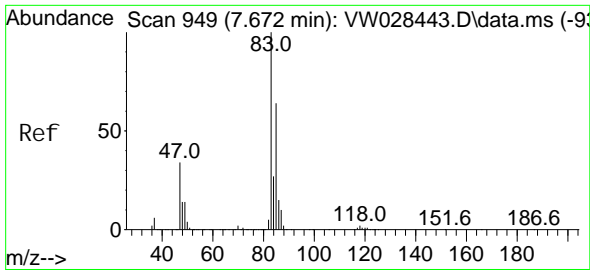


#23
 Bromochloromethane
 Concen: 23.644 ug/L
 RT: 7.514 min Scan# 923
 Delta R.T. 0.000 min
 Lab File: VW028451.D
 Acq: 16 Apr 2024 14:49



Tgt Ion: 128 Resp: 73081
 Ion Ratio Lower Upper
 128 100
 49 203.5 127.1 236.0
 130 124.1 78.3 145.5
 51 60.1 46.0 69.0

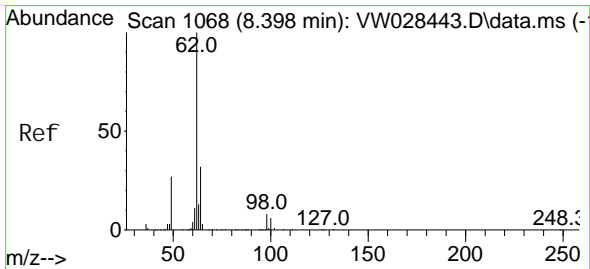
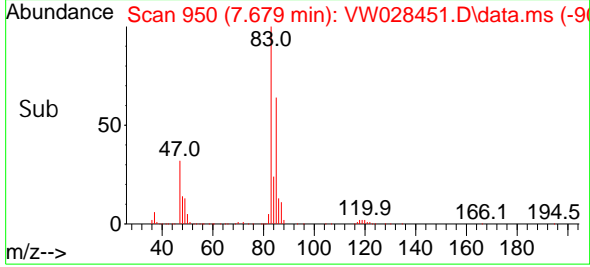
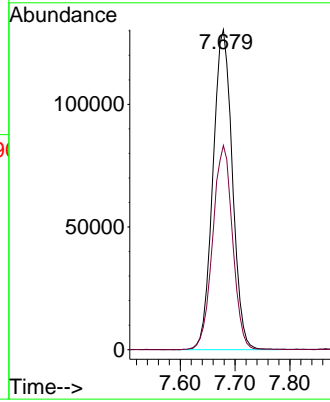
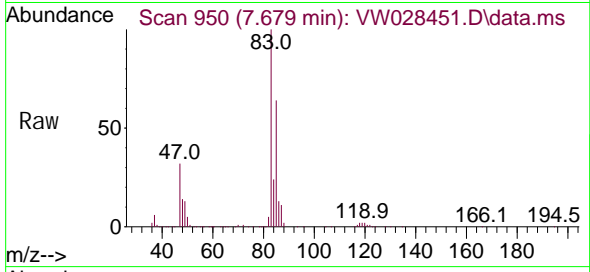




#25
 Chloroform
 Concen: 24.762 ug/L
 RT: 7.679 min Scan# 949
 Delta R.T. 0.006 min
 Lab File: VW028451.D
 Acq: 16 Apr 2024 14:49

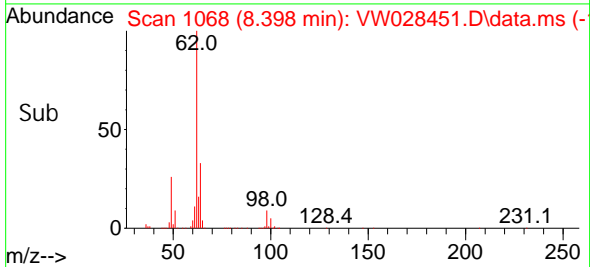
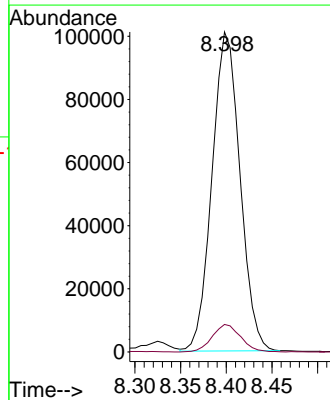
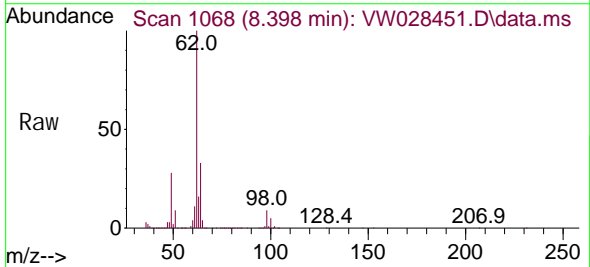
Instrument :
 MSVOA_W
 ClientSampleId :

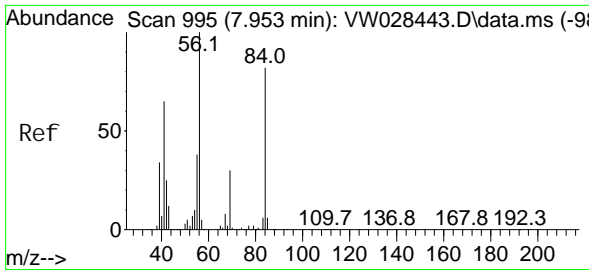
Tgt Ion: 83 Resp: 320439
 Ion Ratio Lower Upper
 83 100
 85 63.8 47.7 88.7



#27
 1,2-Di chloroethane
 Concen: 24.101 ug/L
 RT: 8.398 min Scan# 1068
 Delta R.T. 0.000 min
 Lab File: VW028451.D
 Acq: 16 Apr 2024 14:49

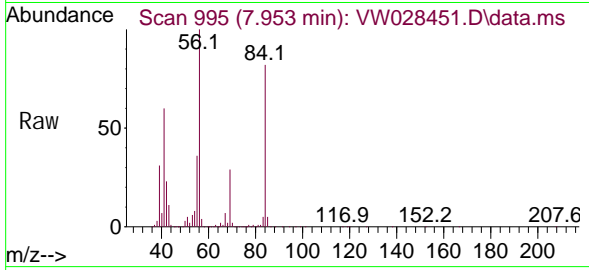
Tgt Ion: 62 Resp: 215257
 Ion Ratio Lower Upper
 62 100
 98 8.6 6.6 10.0



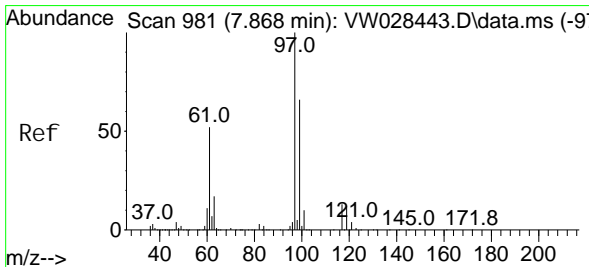
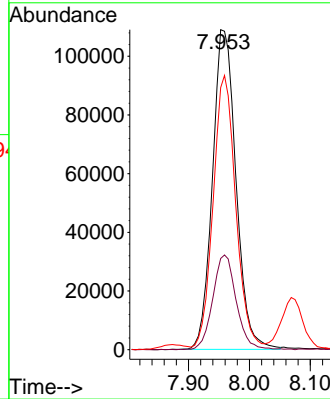
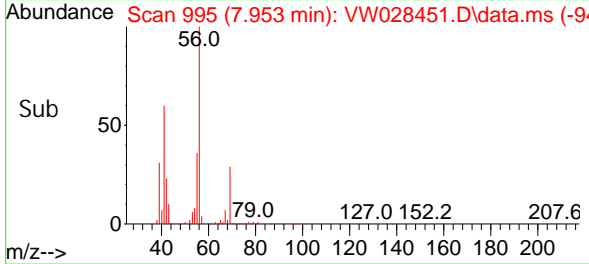


#29
 Cycl ohexane
 Concen: 26.185 ug/L
 RT: 7.953 min Scan# 995
 Delta R.T. 0.000 min
 Lab File: VW028451.D
 Acq: 16 Apr 2024 14: 49

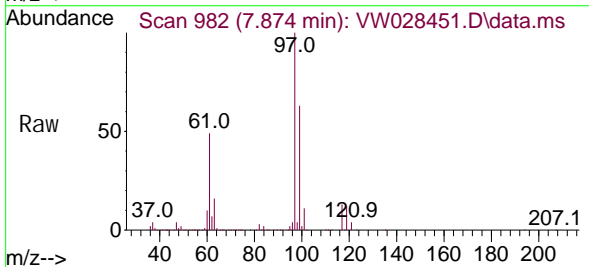
Instrument :
 MSVOA_W
 ClientSampleId :



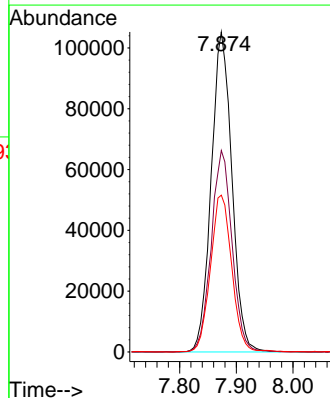
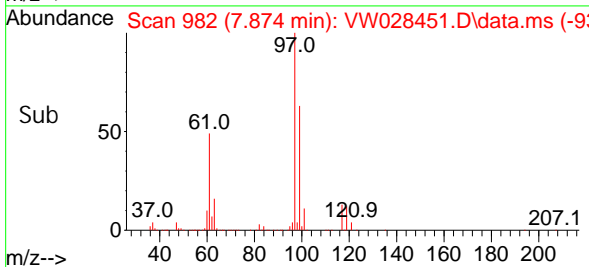
Tgt Ion: 56 Resp: 292738
 Ion Ratio Lower Upper
 56 100
 69 29.4 23.8 35.6
 84 82.6 65.9 98.9

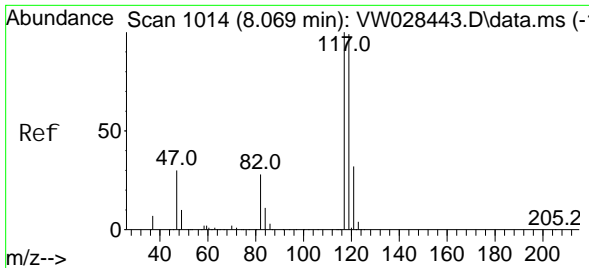


#30
 1,1,1-Tri chloroethane
 Concen: 25.941 ug/L
 RT: 7.874 min Scan# 982
 Delta R.T. 0.006 min
 Lab File: VW028451.D
 Acq: 16 Apr 2024 14: 49



Tgt Ion: 97 Resp: 266277
 Ion Ratio Lower Upper
 97 100
 99 63.5 51.4 77.2
 61 50.0 40.5 60.7

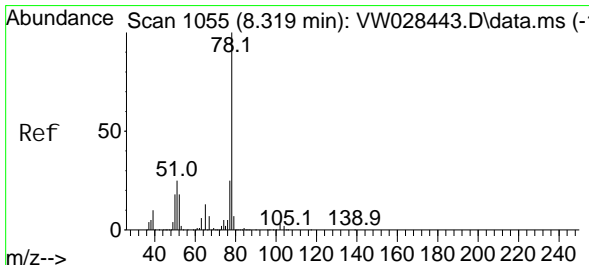
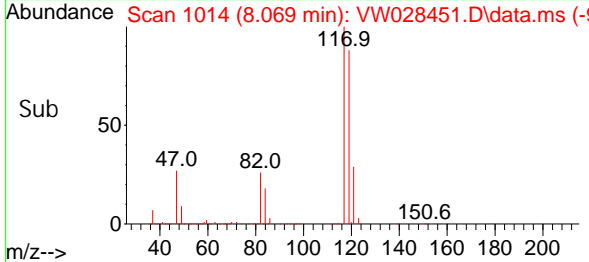
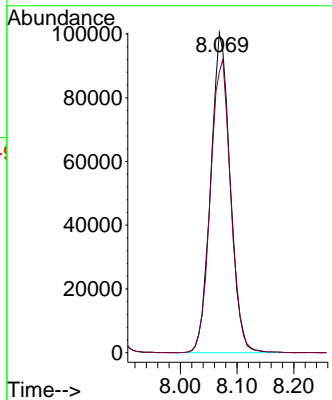
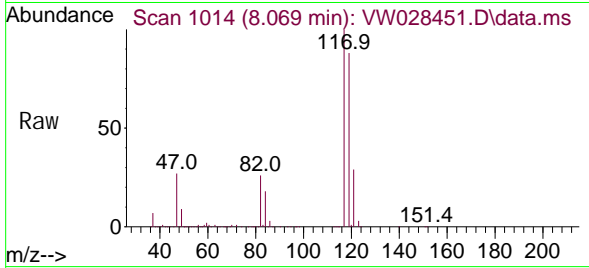




#31
 Carbon tetrachloride
 Concen: 26.289 ug/L
 RT: 8.069 min Scan# 1014
 Delta R.T. 0.000 min
 Lab File: VW028451.D
 Acq: 16 Apr 2024 14:49

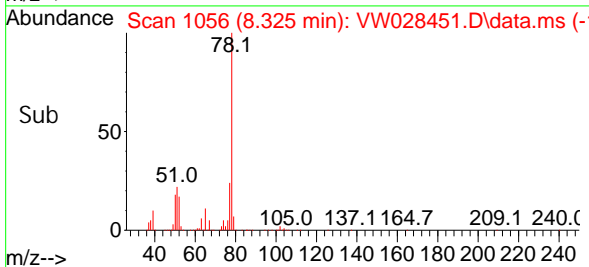
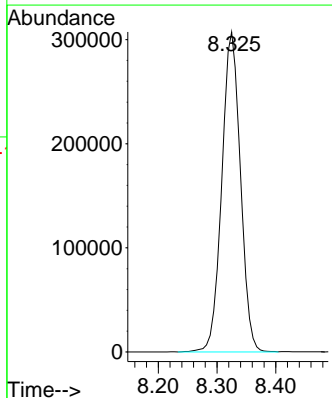
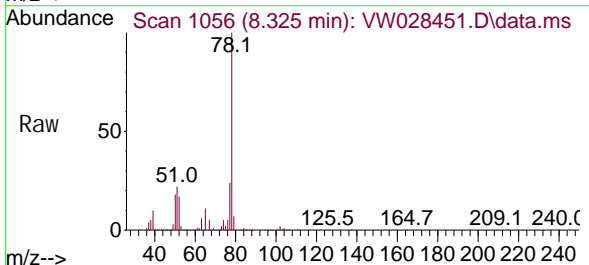
Instrument : MSVOA_W
 ClientSampleId :

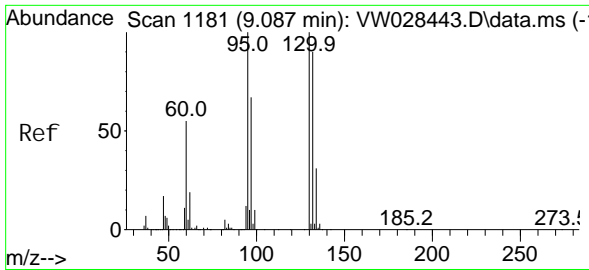
Tgt Ion: 117 Resp: 239286
 Ion Ratio Lower Upper
 117 100
 119 95.5 77.4 116.2



#33
 Benzene
 Concen: 25.601 ug/L
 RT: 8.325 min Scan# 1056
 Delta R.T. 0.006 min
 Lab File: VW028451.D
 Acq: 16 Apr 2024 14:49

Tgt Ion: 78 Resp: 677465





#34

Trichloroethene

Concen: 25.308 ug/L

RT: 9.093 min Scan# 1181

Delta R.T. 0.006 min

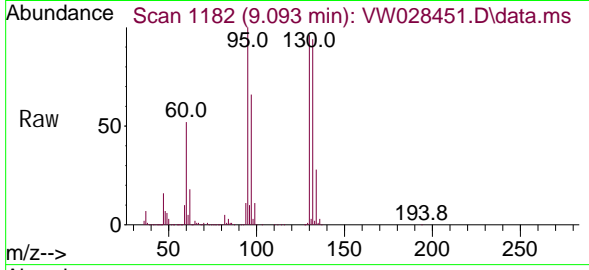
Lab File: VW028451.D

Acq: 16 Apr 2024 14:49

Instrument :

MSVOA_W

ClientSampleId :



Tgt Ion: 95 Resp: 181488

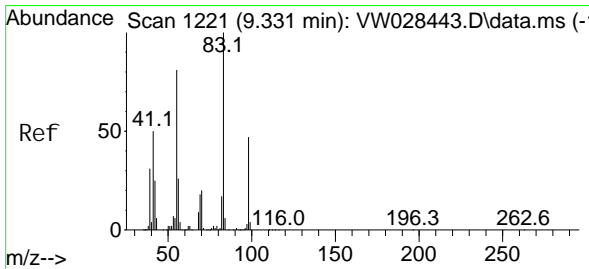
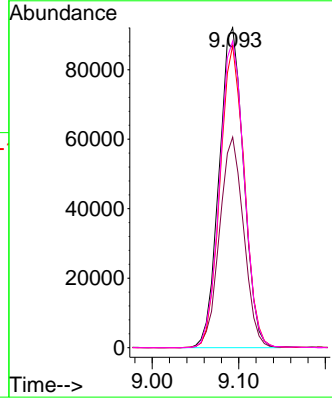
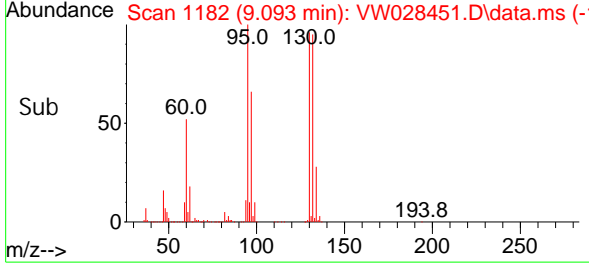
Ion Ratio Lower Upper

95 100

97 65.8 43.8 81.4

132 94.5 66.1 122.8

130 95.8 67.0 124.4



#35

Methylcyclohexane

Concen: 23.840 ug/L

RT: 9.337 min Scan# 1222

Delta R.T. 0.006 min

Lab File: VW028451.D

Acq: 16 Apr 2024 14:49

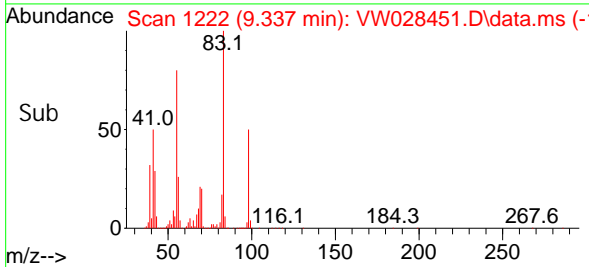
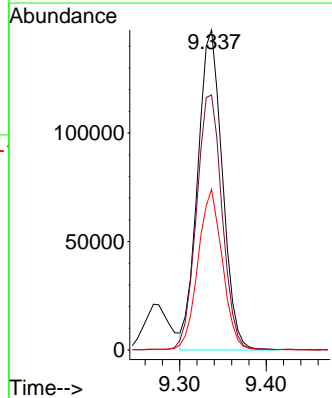
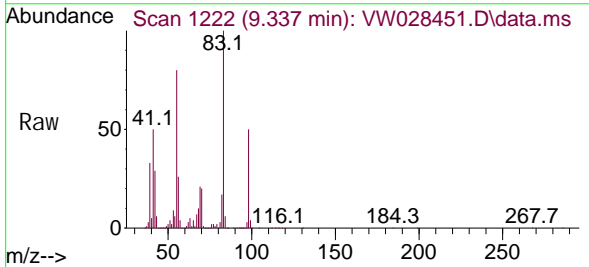
Tgt Ion: 83 Resp: 291740

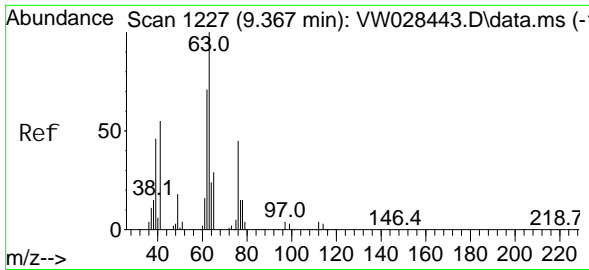
Ion Ratio Lower Upper

83 100

55 82.7 65.7 98.5

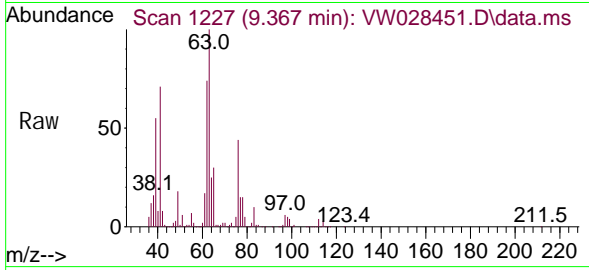
98 49.5 38.6 58.0



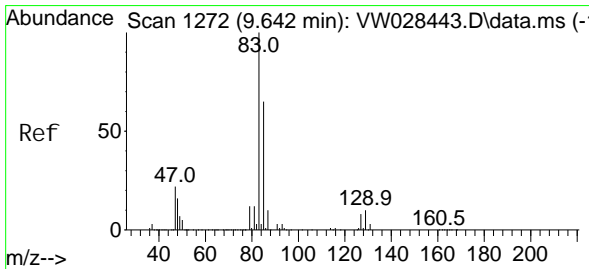
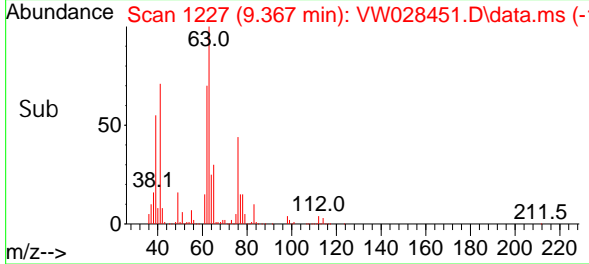
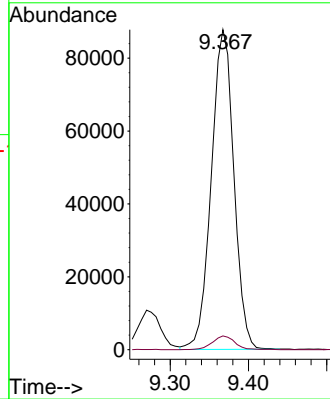


#37
 1, 2-Di chl oropropane
 Concen: 25.470 ug/L
 RT: 9.367 min Scan# 11
 Delta R.T. 0.000 min
 Lab File: VW028451.D
 Acq: 16 Apr 2024 14:49

Instrument :
 MSVOA_W
 ClientSampleId :

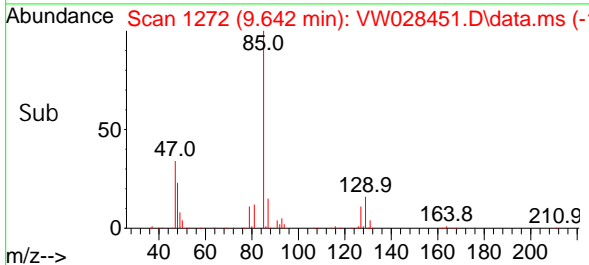
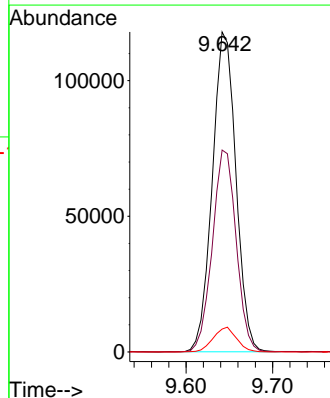
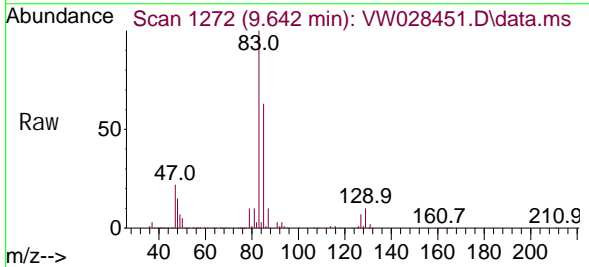


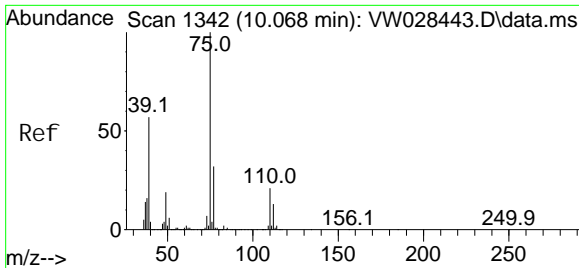
Tgt Ion: 63 Resp: 175666
 Ion Ratio Lower Upper
 63 100
 112 4.3 3.6 5.4



#38
 Bromodi chl oromethane
 Concen: 26.141 ug/L
 RT: 9.642 min Scan# 1272
 Delta R.T. 0.000 min
 Lab File: VW028451.D
 Acq: 16 Apr 2024 14:49

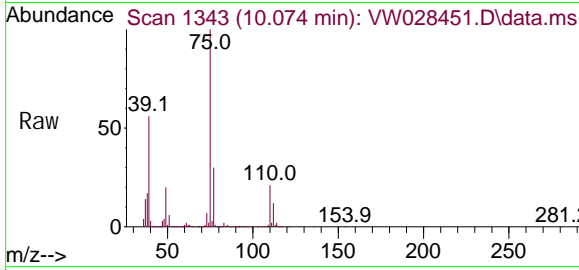
Tgt Ion: 83 Resp: 223473
 Ion Ratio Lower Upper
 83 100
 85 63.1 43.1 80.1
 127 7.2 6.4 9.6



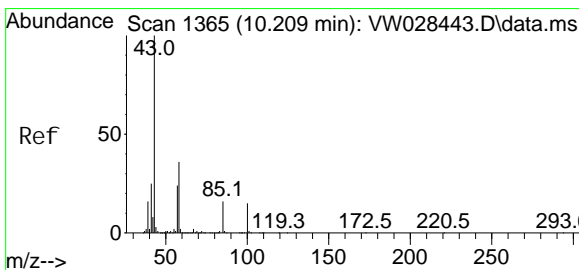
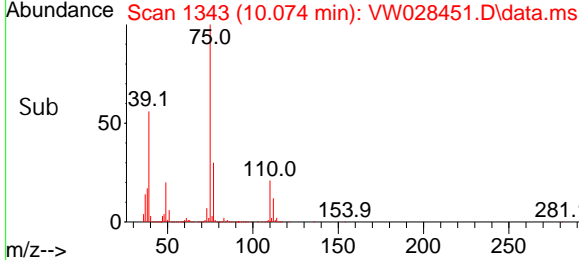
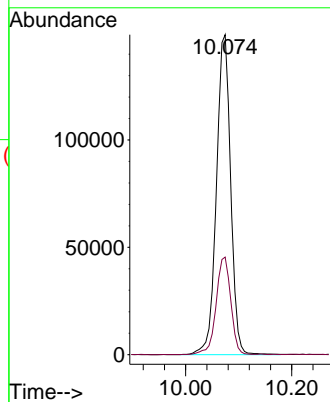


#39
 cis-1,3-Dichloropropene
 Concen: 27.498 ug/L
 RT: 10.074 min Scan# 1343
 Delta R.T. 0.006 min
 Lab File: VW028451.D
 Acq: 16 Apr 2024 14:49

Instrument : MSVOA_W
 ClientSampleId :

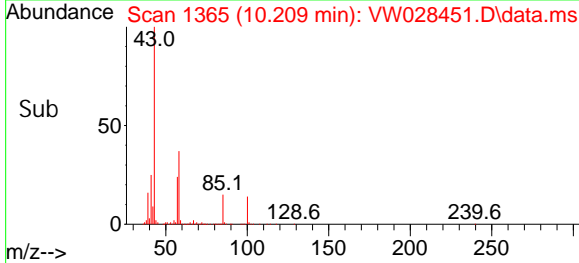
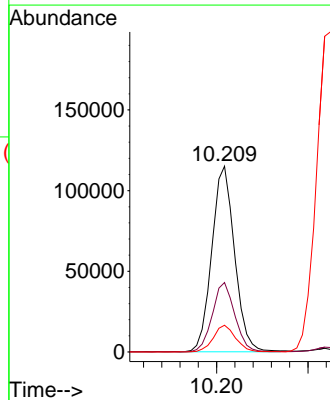
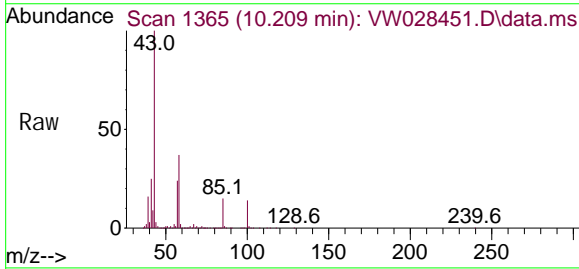


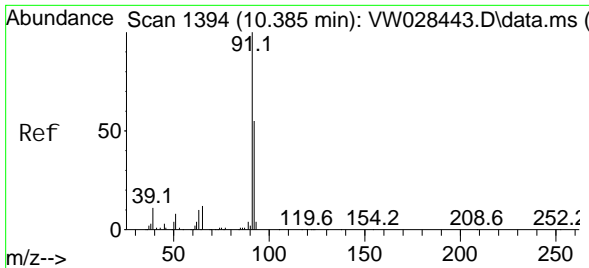
Tgt Ion: 75 Resp: 278118
 Ion Ratio Lower Upper
 75 100
 77 30.5 21.3 39.5



#40
 4-Methyl-2-pentanone
 Concen: 57.618 ug/L
 RT: 10.209 min Scan# 1365
 Delta R.T. 0.000 min
 Lab File: VW028451.D
 Acq: 16 Apr 2024 14:49

Tgt Ion: 43 Resp: 198933
 Ion Ratio Lower Upper
 43 100
 58 37.0 28.6 43.0
 100 14.2 10.6 16.0

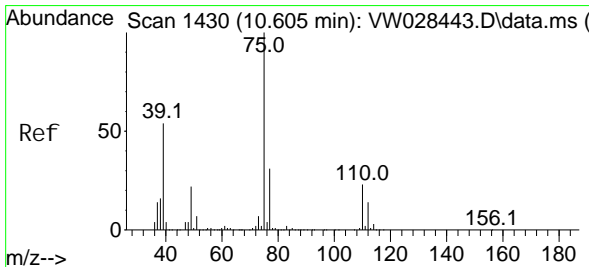
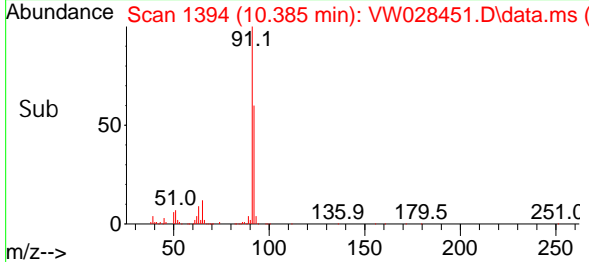
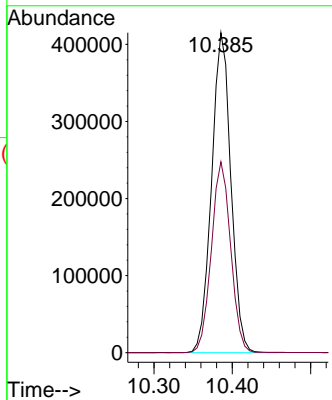
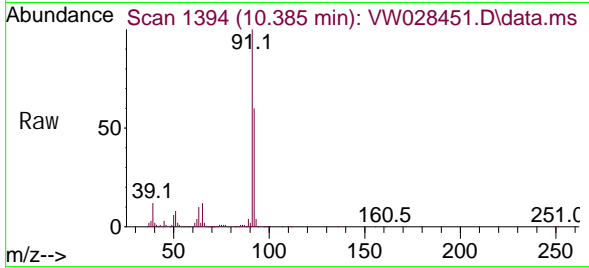




#42
 Tol uene
 Concen: 25.348 ug/L
 RT: 10.385 min Scan# 1394
 Delta R.T. 0.000 min
 Lab File: VW028451.D
 Acq: 16 Apr 2024 14:49

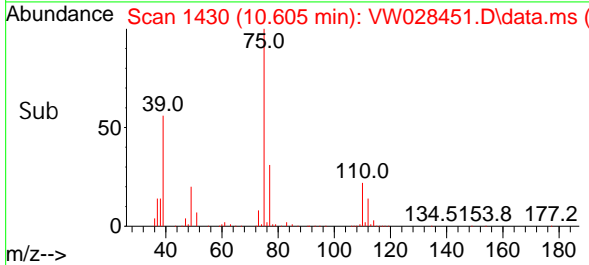
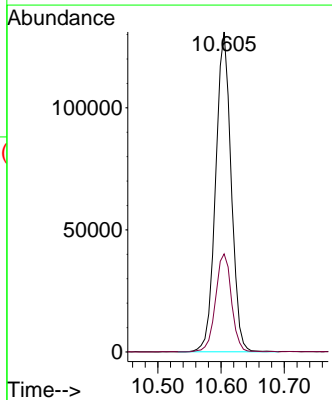
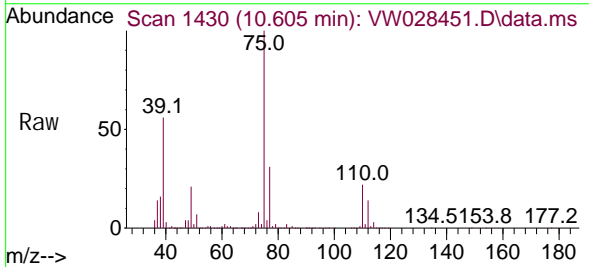
Instrument : MSVOA_W
 ClientSampleId :

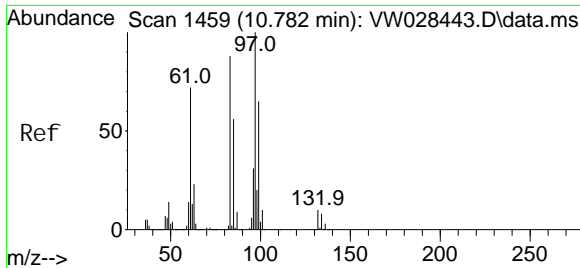
Tgt Ion: 91 Resp: 710611
 Ion Ratio Lower Upper
 91 100
 92 59.6 41.1 76.3



#44
 trans-1,3-Di chl oropropene
 Concen: 27.160 ug/L
 RT: 10.605 min Scan# 1430
 Delta R.T. 0.000 min
 Lab File: VW028451.D
 Acq: 16 Apr 2024 14:49

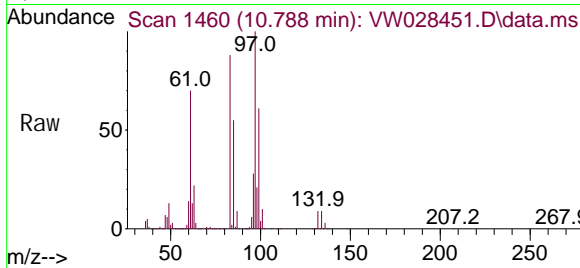
Tgt Ion: 75 Resp: 222225
 Ion Ratio Lower Upper
 75 100
 77 30.7 22.6 42.0





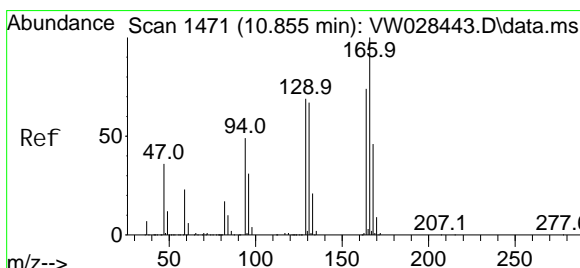
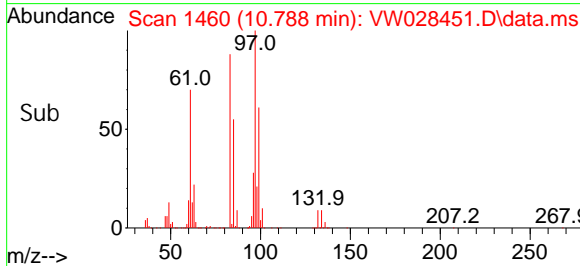
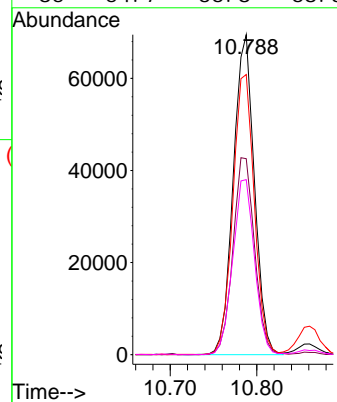
#45
 1,1,2-Trichloroethane
 Concen: 25.216 ug/L
 RT: 10.788 min Scan# 1459
 Delta R.T. 0.006 min
 Lab File: VW028451.D
 Acq: 16 Apr 2024 14:49

Instrument : MSVOA_W
 ClientSampleId :

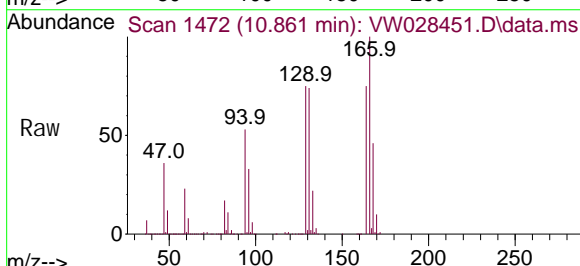


Tgt Ion: 97 Resp: 117663

Ion	Ratio	Lower	Upper
97	100		
99	61.2	44.2	82.2
83	87.5	56.4	104.7
85	54.7	36.8	68.3

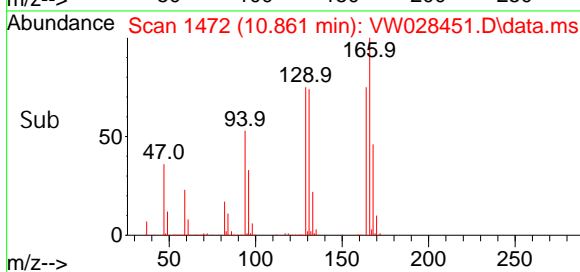
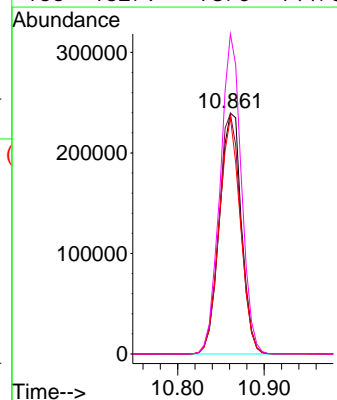


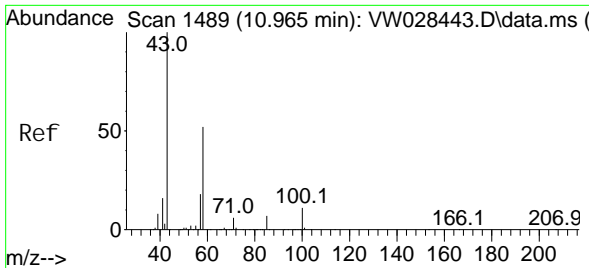
#46
 Tetrachloroethene
 Concen: 78.897 ug/L
 RT: 10.861 min Scan# 1472
 Delta R.T. 0.006 min
 Lab File: VW028451.D
 Acq: 16 Apr 2024 14:49



Tgt Ion: 164 Resp: 422619

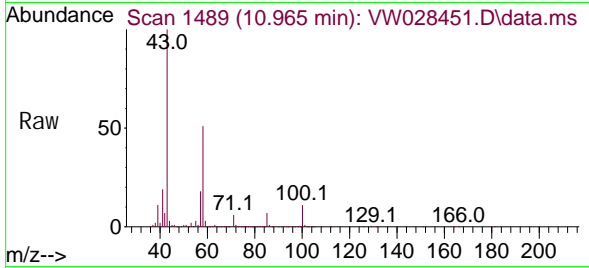
Ion	Ratio	Lower	Upper
164	100		
129	99.8	59.7	110.9
131	98.2	58.2	108.2
166	132.9	78.0	144.8





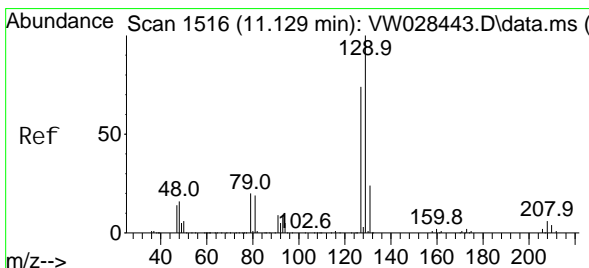
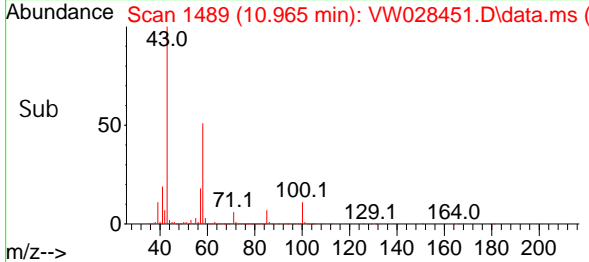
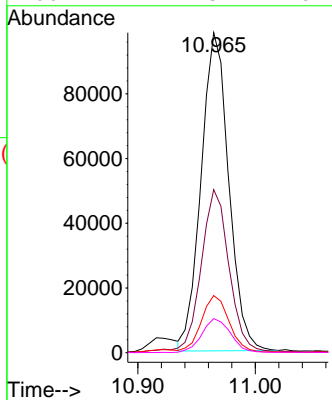
#48
 2-Hexanone
 Concen: 58.716 ug/L
 RT: 10.965 min Scan# 1489
 Delta R.T. 0.000 min
 Lab File: VW028451.D
 Acq: 16 Apr 2024 14:49

Instrument : MSVOA_W
 ClientSampleId :



Tgt Ion: 43 Resp: 160914

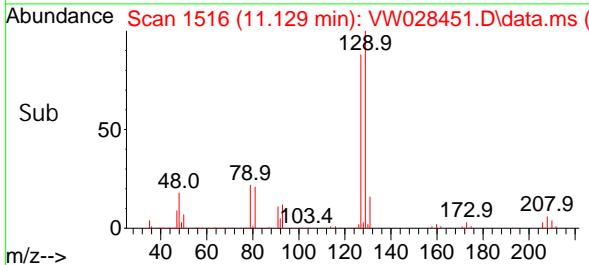
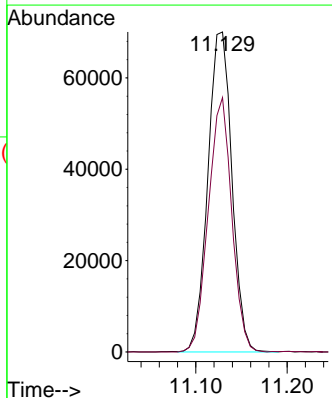
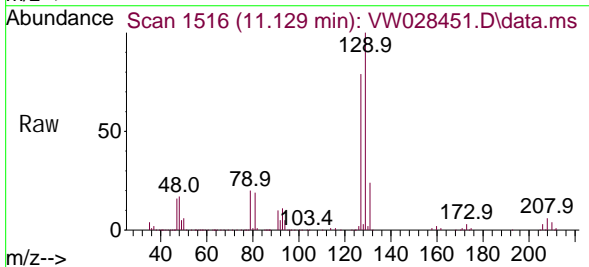
Ion	Ratio	Lower	Upper
43	100		
58	52.9	38.9	58.3
57	18.3	14.4	21.6
100	11.2	8.7	13.1

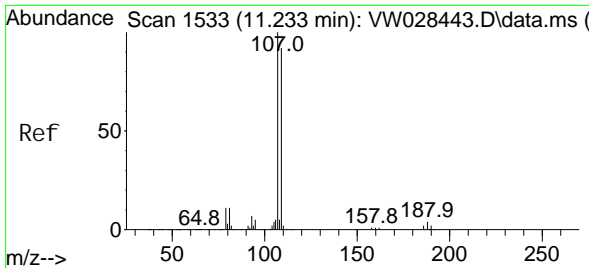


#49
 Di bromochloromethane
 Concen: 25.688 ug/L
 RT: 11.129 min Scan# 1516
 Delta R.T. 0.000 min
 Lab File: VW028451.D
 Acq: 16 Apr 2024 14:49

Tgt Ion: 129 Resp: 128114

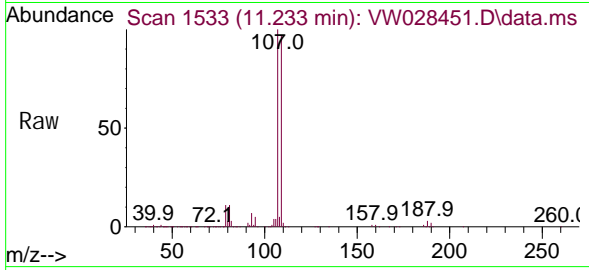
Ion	Ratio	Lower	Upper
129	100		
127	79.5	53.0	98.4





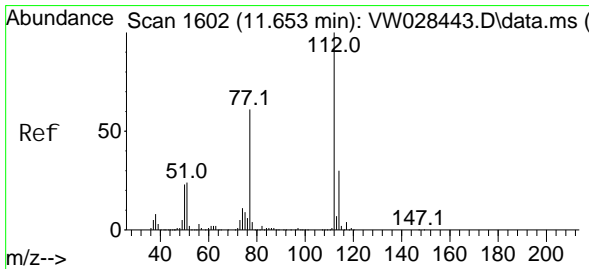
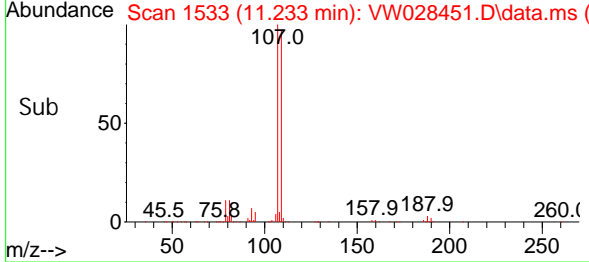
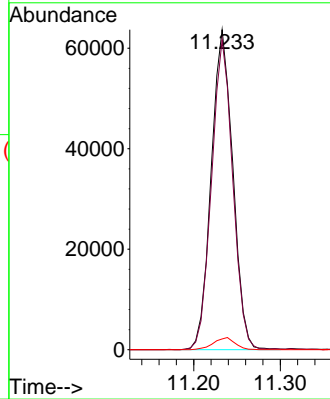
#50
 1, 2-Di bromoethane
 Concen: 25.954 ug/L
 RT: 11.233 min Scan# 1533
 Delta R.T. 0.000 min
 Lab File: VW028451.D
 Acq: 16 Apr 2024 14: 49

Instrument : MSVOA_W
 ClientSampleId :



Tgt Ion: 107 Resp: 110533

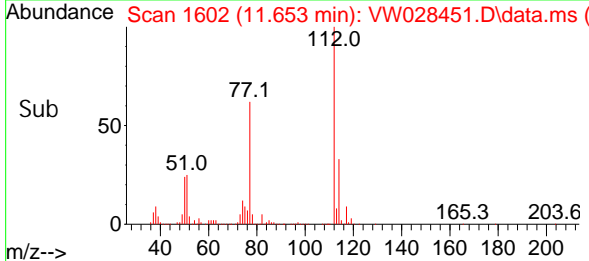
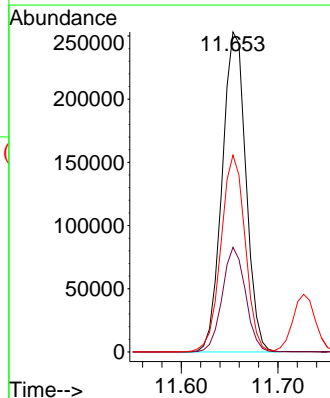
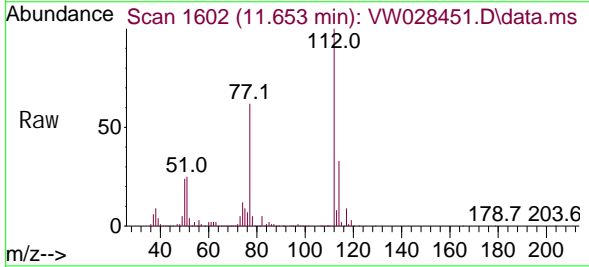
Ion	Ratio	Lower	Upper
107	100		
109	96.9	62.1	115.3
188	3.3	3.2	4.8

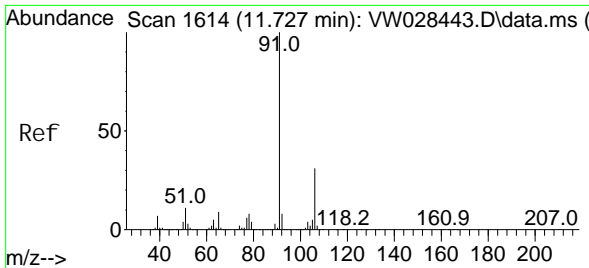


#51
 Chlorobenzene
 Concen: 24.791 ug/L
 RT: 11.653 min Scan# 1602
 Delta R.T. 0.000 min
 Lab File: VW028451.D
 Acq: 16 Apr 2024 14: 49

Tgt Ion: 112 Resp: 431987

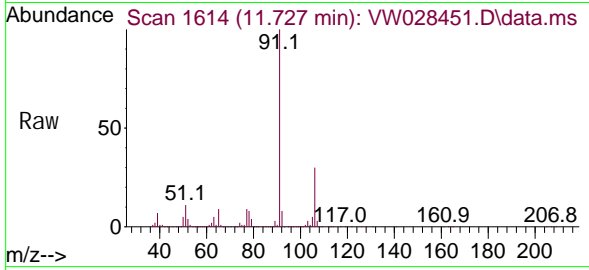
Ion	Ratio	Lower	Upper
112	100		
114	32.7	22.3	41.3
77	61.5	51.8	77.8



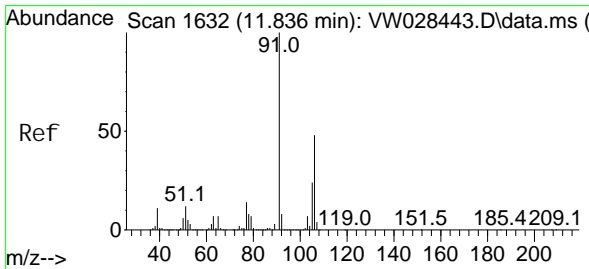
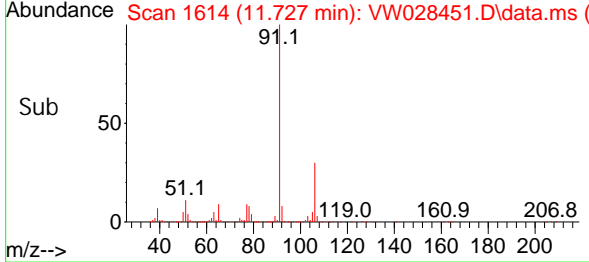
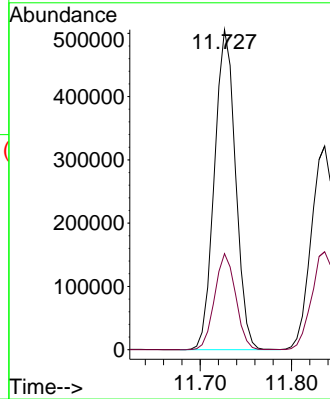


#52
 Ethyl benzene
 Concen: 25.514 ug/L
 RT: 11.727 min Scan# 1614
 Delta R.T. 0.000 min
 Lab File: VW028451.D
 Acq: 16 Apr 2024 14:49

Instrument : MSVOA_W
 ClientSampleId :

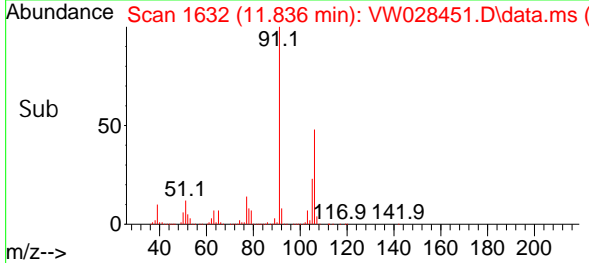
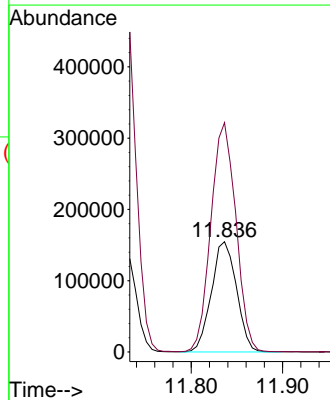
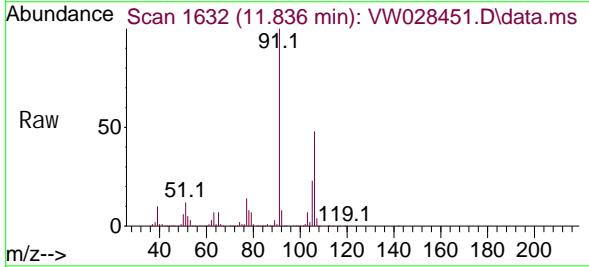


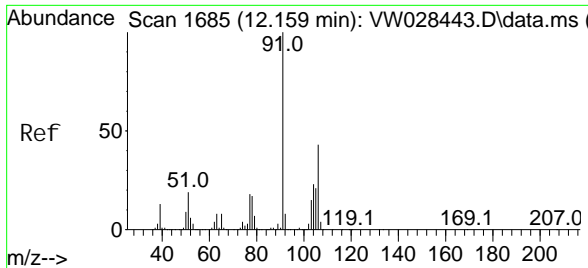
Tgt Ion: 91 Resp: 810790
 Ion Ratio Lower Upper
 91 100
 106 30.0 21.2 39.4



#53
 m, p-Xyl ene
 Concen: 25.000 ug/L
 RT: 11.836 min Scan# 1632
 Delta R.T. 0.000 min
 Lab File: VW028451.D
 Acq: 16 Apr 2024 14:49

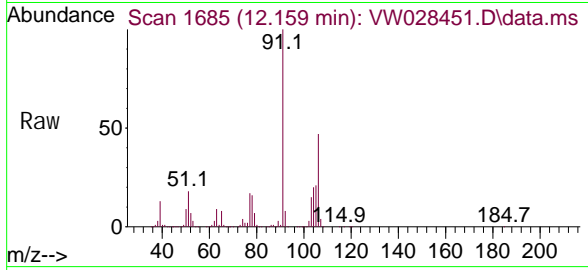
Tgt Ion: 106 Resp: 295450
 Ion Ratio Lower Upper
 106 100
 91 207.9 152.4 283.0



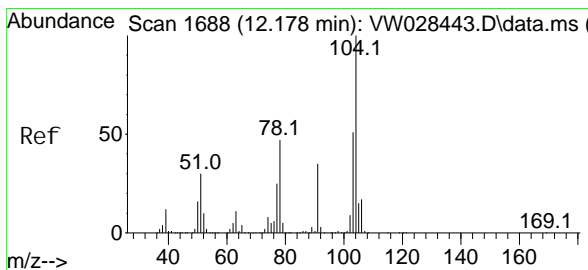
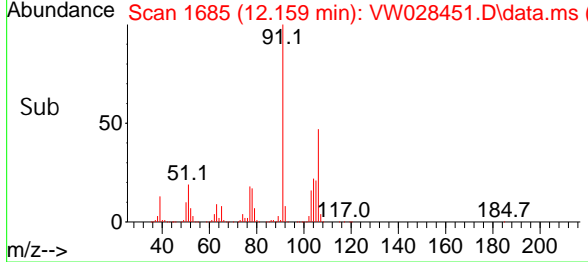
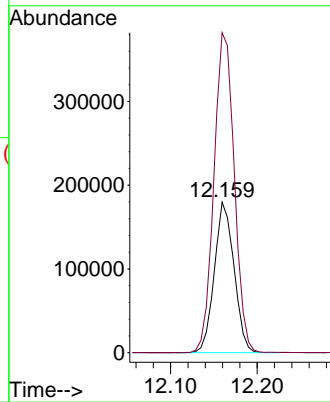


#54
 o-Xyl ene
 Concen: 25.791 ug/L
 RT: 12.159 min Scan# 1685
 Delta R.T. 0.000 min
 Lab File: VW028451.D
 Acq: 16 Apr 2024 14:49

Instrument : MSVOA_W
 ClientSampleId :

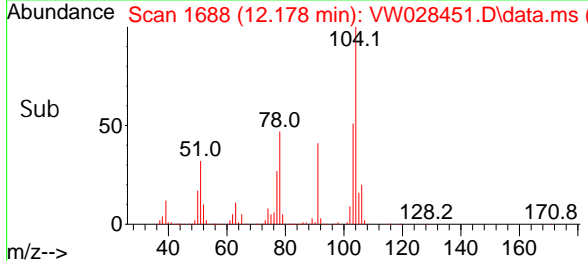
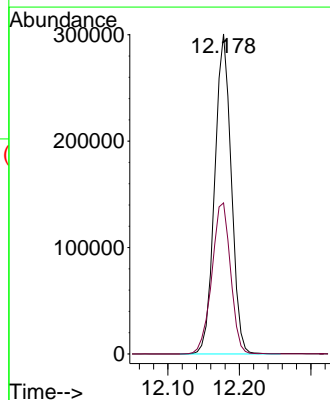
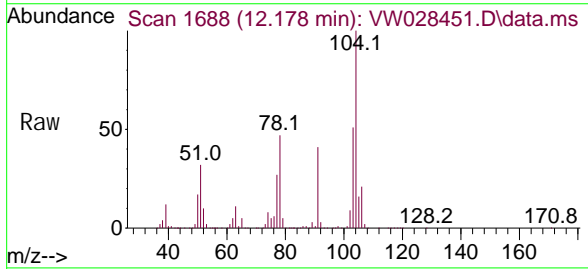


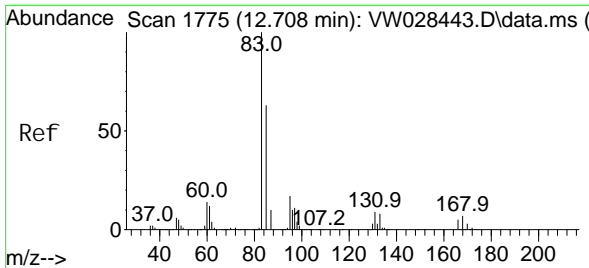
Tgt Ion: 106 Resp: 283794
 Ion Ratio Lower Upper
 106 100
 91 212.5 152.9 283.9



#55
 Styrene
 Concen: 25.769 ug/L
 RT: 12.178 min Scan# 1688
 Delta R.T. 0.000 min
 Lab File: VW028451.D
 Acq: 16 Apr 2024 14:49

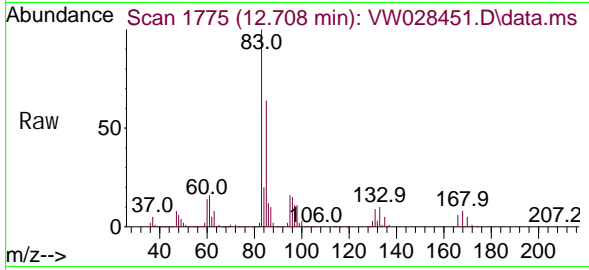
Tgt Ion: 104 Resp: 482605
 Ion Ratio Lower Upper
 104 100
 78 47.2 33.8 62.8



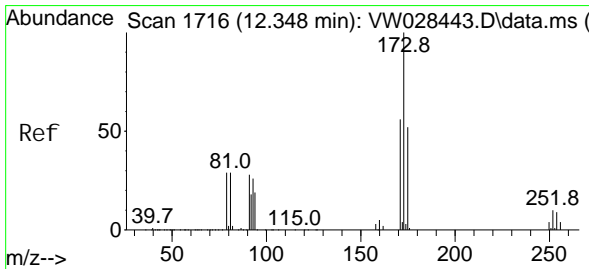
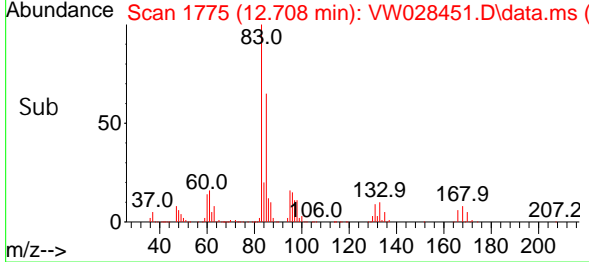
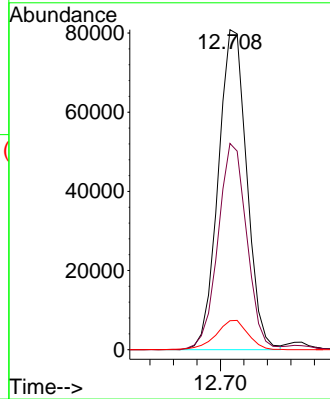


#57
 1, 1, 2-Tetrachloroethane
 Concen: 25.817 ug/L
 RT: 12.708 min Scan# 1
 Delta R.T. 0.000 min
 Lab File: VW028451.D
 Acq: 16 Apr 2024 14:49

Instrument :
 MSVOA_W
 ClientSampleId :

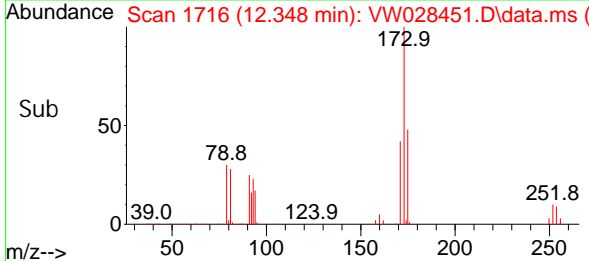
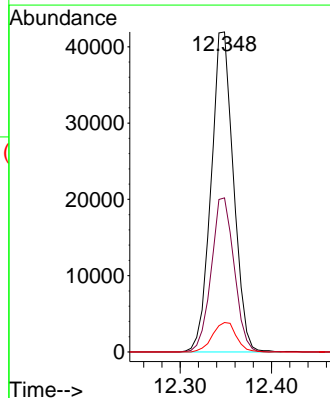
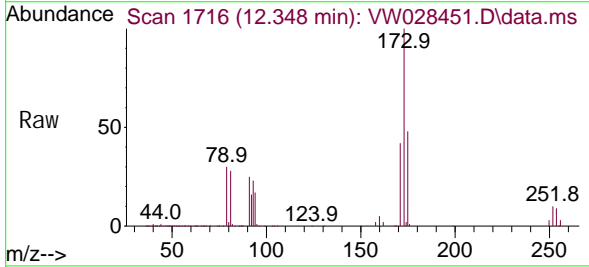


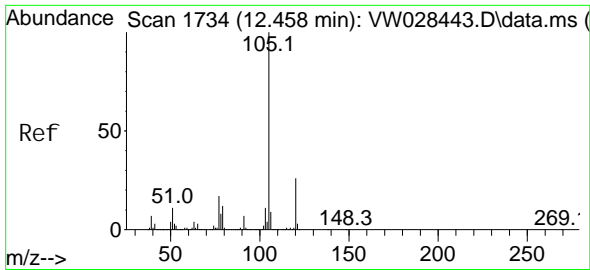
Tgt Ion: 83 Resp: 136328
 Ion Ratio Lower Upper
 83 100
 85 64.4 43.4 80.6
 131 9.1 8.0 12.0



#59
 Bromoform
 Concen: 27.667 ug/L
 RT: 12.348 min Scan# 1716
 Delta R.T. 0.000 min
 Lab File: VW028451.D
 Acq: 16 Apr 2024 14:49

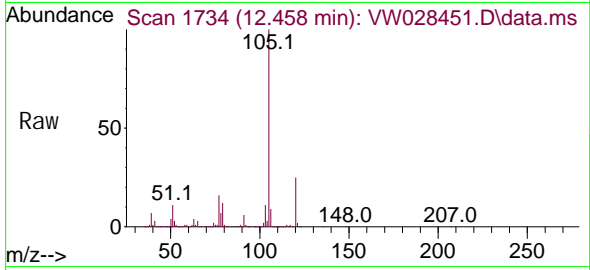
Tgt Ion: 173 Resp: 71274
 Ion Ratio Lower Upper
 173 100
 175 49.2 39.2 58.8
 254 9.8 8.3 12.5





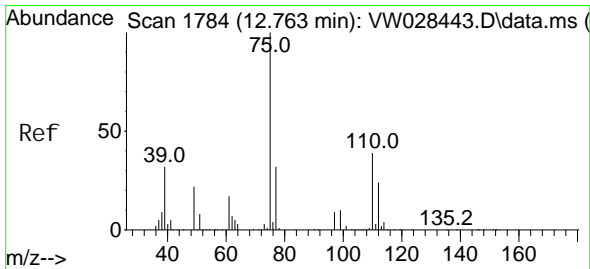
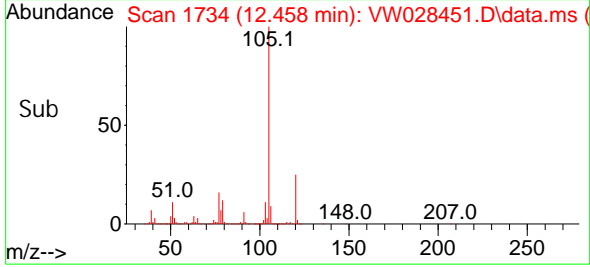
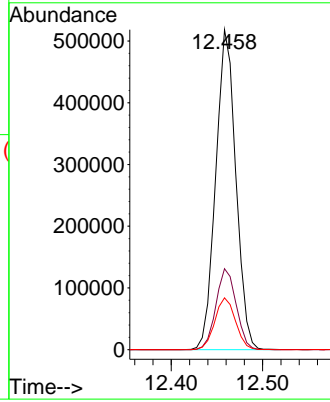
#60
 Isopropyl benzene
 Concen: 27.084 ug/L
 RT: 12.458 min Scan# 1734
 Delta R.T. 0.000 min
 Lab File: VW028451.D
 Acq: 16 Apr 2024 14:49

Instrument : MSVOA_W
 ClientSampleId :



Tgt Ion: 105 Resp: 792441

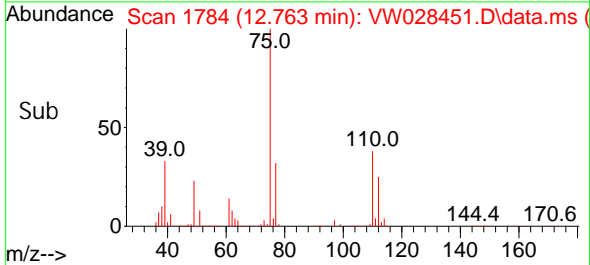
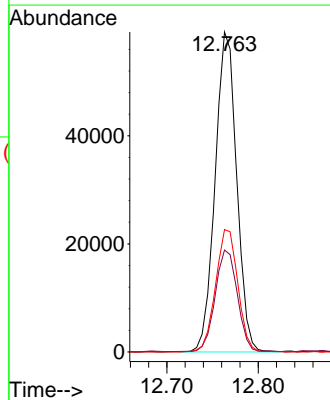
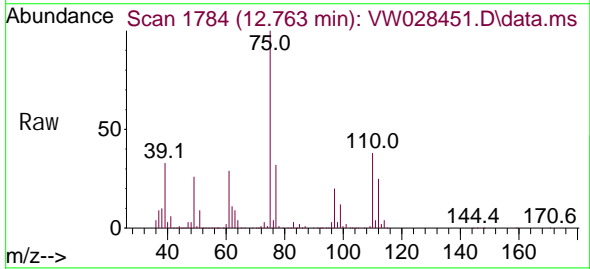
Ion	Ratio	Lower	Upper
105	100		
120	25.5	20.8	31.2
77	16.7	13.4	20.2

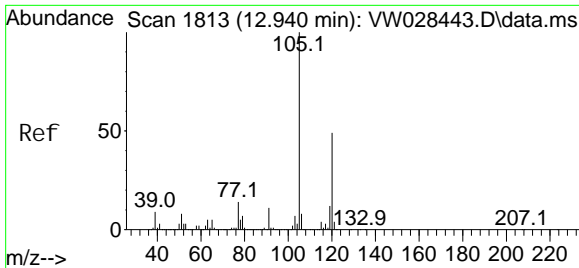


#61
 1,2,3-Trichloropropane
 Concen: 27.154 ug/L
 RT: 12.763 min Scan# 1784
 Delta R.T. 0.000 min
 Lab File: VW028451.D
 Acq: 16 Apr 2024 14:49

Tgt Ion: 75 Resp: 96889

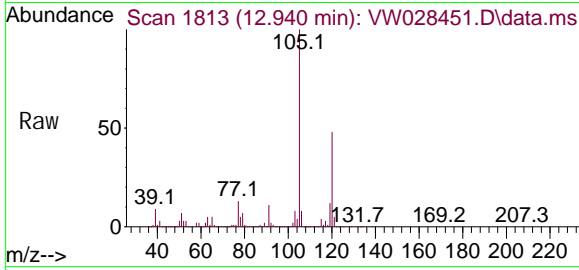
Ion	Ratio	Lower	Upper
75	100		
77	32.6	26.1	39.1
110	39.4	30.6	46.0



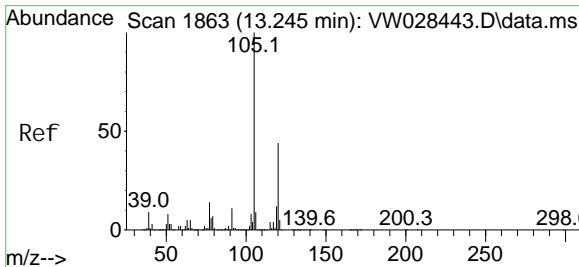
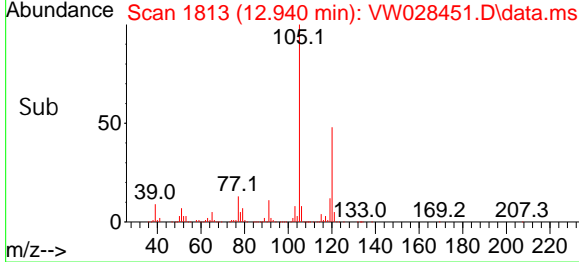
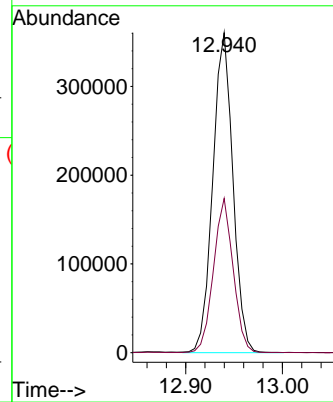


#62
 1, 3, 5-Tri methyl benzene
 Concen: 27.982 ug/L
 RT: 12.940 min Scan# 1813
 Delta R.T. 0.000 min
 Lab File: VW028451.D
 Acq: 16 Apr 2024 14:49

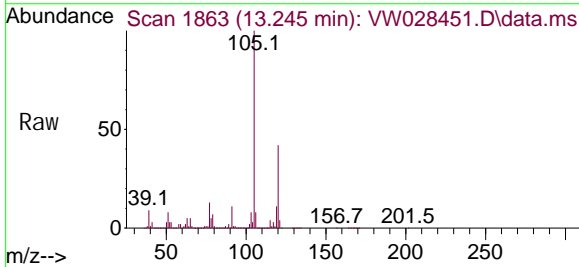
Instrument : MSVOA_W
 ClientSampleId :



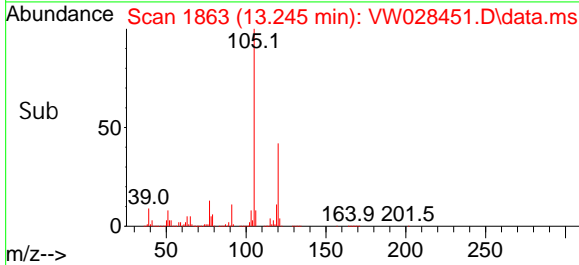
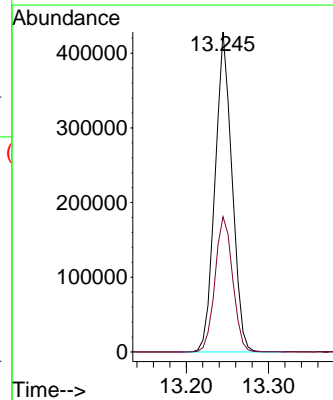
Tgt Ion: 105 Resp: 521817
 Ion Ratio Lower Upper
 105 100
 120 47.2 37.5 56.3

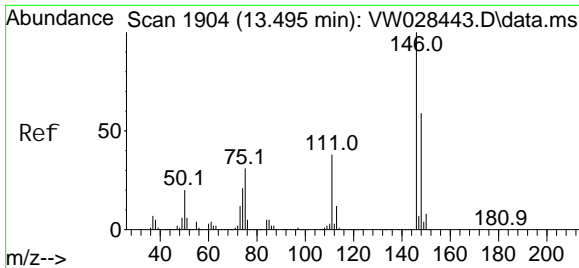


#63
 1, 2, 4-Tri methyl benzene
 Concen: 27.355 ug/L
 RT: 13.245 min Scan# 1863
 Delta R.T. 0.000 min
 Lab File: VW028451.D
 Acq: 16 Apr 2024 14:49



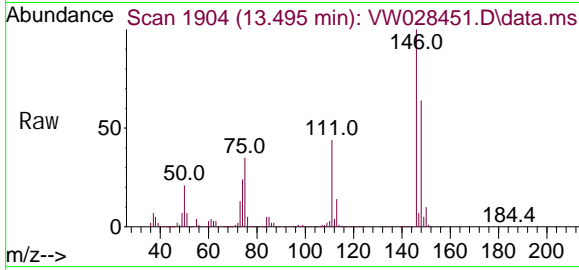
Tgt Ion: 105 Resp: 613908
 Ion Ratio Lower Upper
 105 100
 120 43.9 35.4 53.0



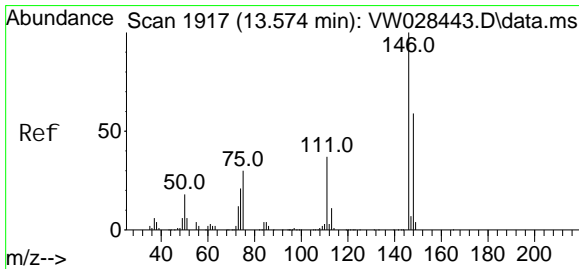
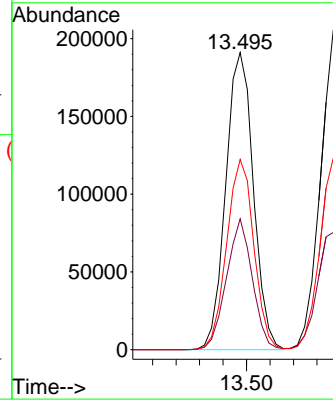
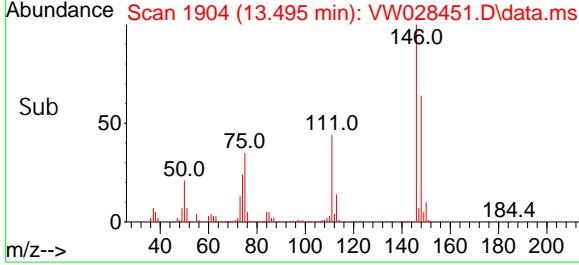


#64
 1, 3-Di chl orobenzene
 Concen: 25.112 ug/L
 RT: 13.495 min Scan# 1904
 Delta R.T. 0.000 min
 Lab File: VW028451.D
 Acq: 16 Apr 2024 14:49

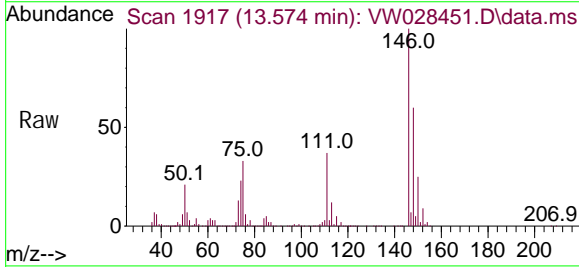
Instrument :
 MSVOA_W
 ClientSampleId :



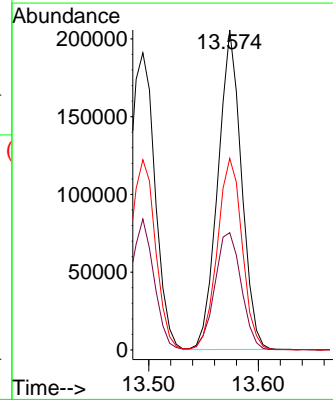
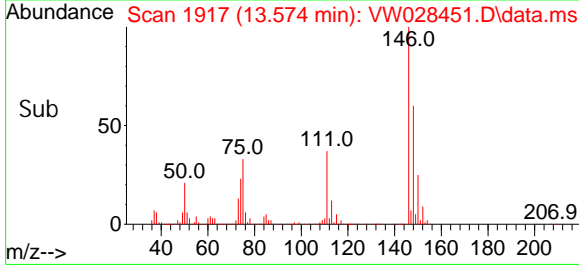
Tgt Ion: 146 Resp: 311759
 Ion Ratio Lower Upper
 146 100
 111 44.0 29.8 55.3
 148 64.0 47.3 87.8

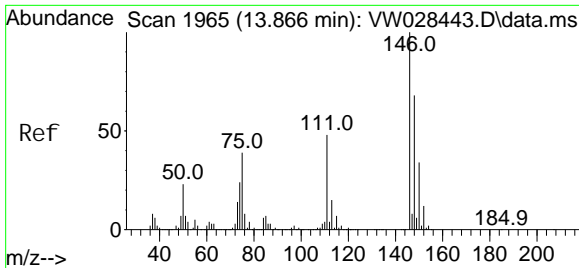


#65
 1, 4-Di chl orobenzene
 Concen: 24.376 ug/L
 RT: 13.574 min Scan# 1917
 Delta R.T. 0.000 min
 Lab File: VW028451.D
 Acq: 16 Apr 2024 14:49



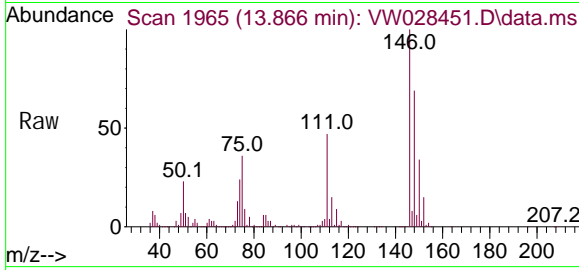
Tgt Ion: 146 Resp: 307832
 Ion Ratio Lower Upper
 146 100
 111 36.7 30.3 56.3
 148 59.8 47.3 87.8



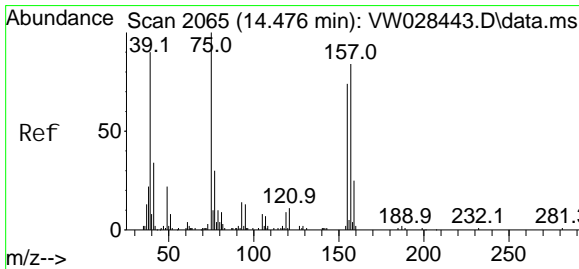
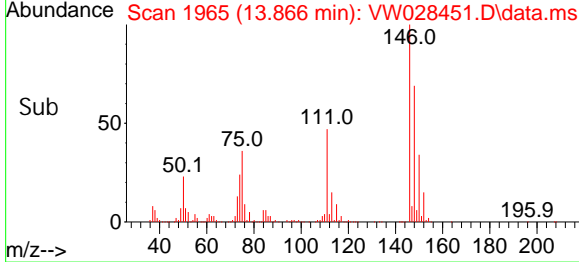
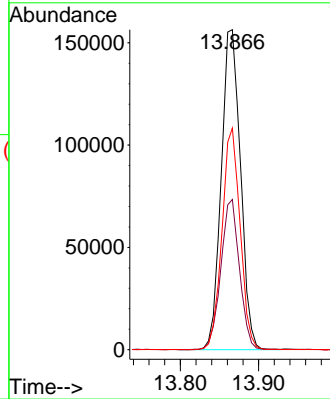


#67
 1, 2-Di chl orobenzene
 Concen: 24.487 ug/L
 RT: 13.866 min Scan# 1965
 Delta R.T. 0.000 min
 Lab File: VW028451.D
 Acq: 16 Apr 2024 14: 49

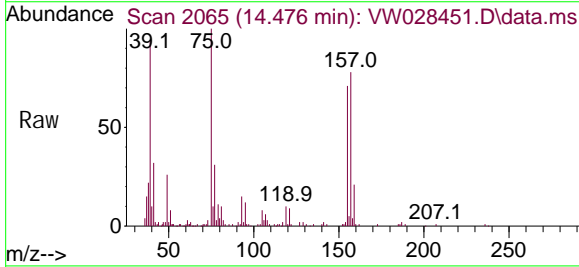
Instrument : MSVOA_W
 ClientSampleId :



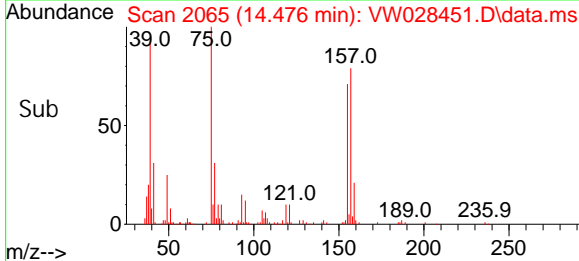
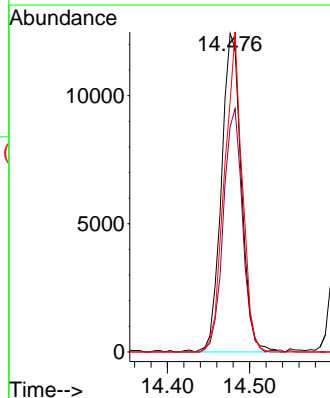
Tgt Ion: 146 Resp: 267400
 Ion Ratio Lower Upper
 146 100
 111 46.9 31.4 47.2
 148 69.2 46.4 69.6

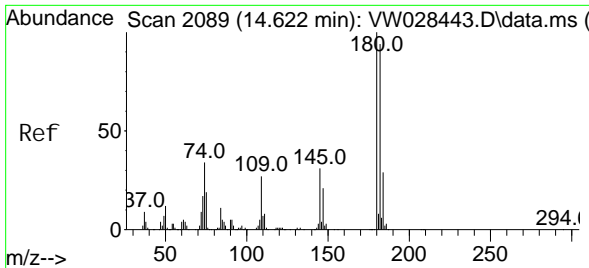


#68
 1, 2-Di bromo-3- chl oropropane
 Concen: 25.569 ug/L
 RT: 14.476 min Scan# 2065
 Delta R.T. 0.000 min
 Lab File: VW028451.D
 Acq: 16 Apr 2024 14: 49



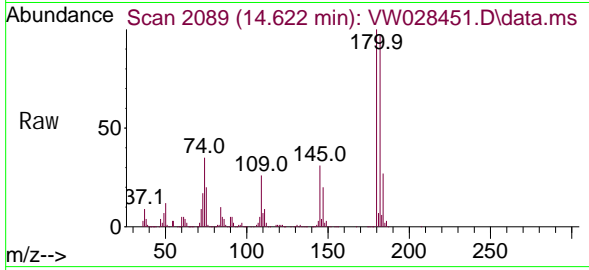
Tgt Ion: 75 Resp: 20906
 Ion Ratio Lower Upper
 75 100
 155 70.8 61.2 91.8
 157 78.4 73.3 109.9





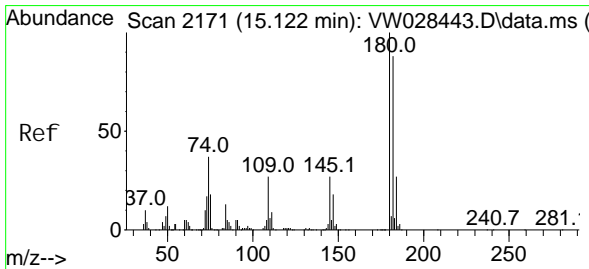
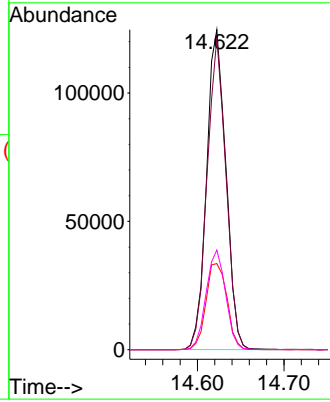
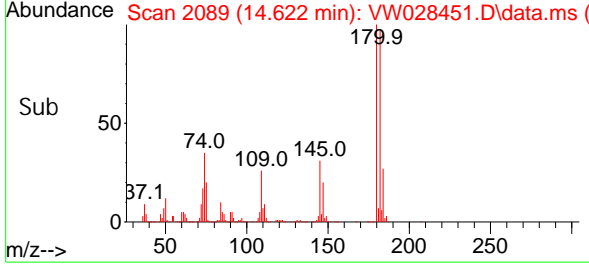
#69
 1, 3, 5-Tri chlorobenzene
 Concen: 22.620 ug/L
 RT: 14.622 min Scan# 2089
 Delta R.T. 0.000 min
 Lab File: VW028451.D
 Acq: 16 Apr 2024 14: 49

Instrument : MSVOA_W
 ClientSampleId :

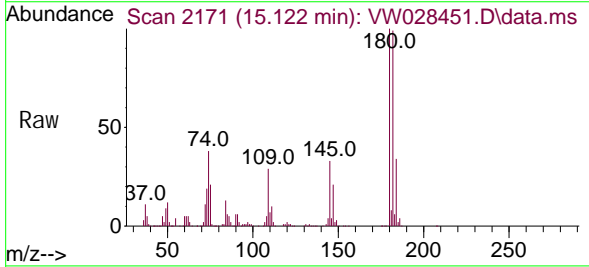


Tgt Ion: 180 Resp: 193239

Ion	Ratio	Lower	Upper
180	100		
182	95.2	77.4	116.0
184	29.4	24.8	37.2
145	31.4	24.6	36.8

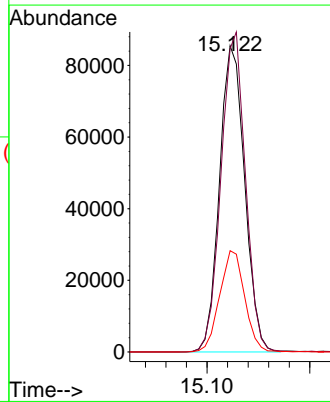
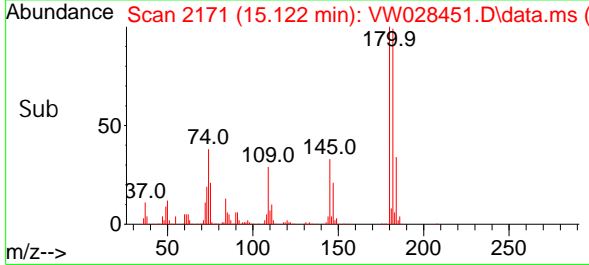


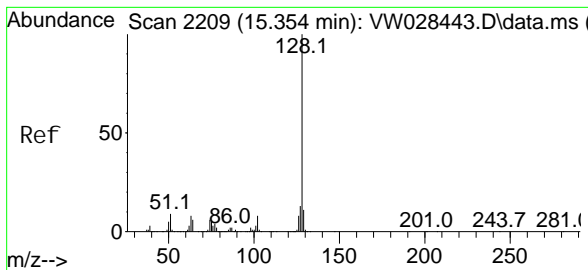
#70
 1, 2, 4-tri chlorobenzene
 Concen: 21.825 ug/L
 RT: 15.122 min Scan# 2171
 Delta R.T. 0.000 min
 Lab File: VW028451.D
 Acq: 16 Apr 2024 14: 49



Tgt Ion: 180 Resp: 145603

Ion	Ratio	Lower	Upper
180	100		
182	101.2	71.5	107.3
145	32.8	23.5	35.3

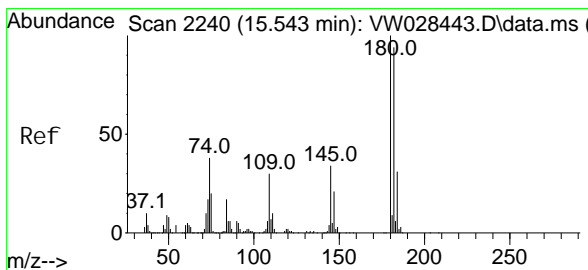
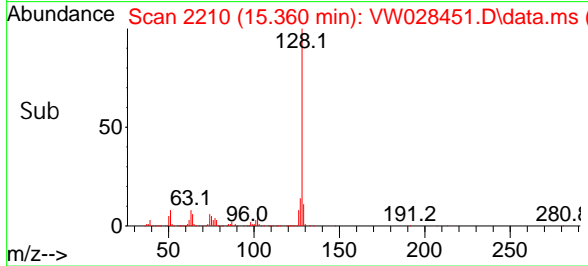
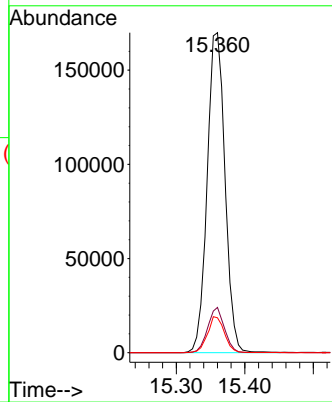
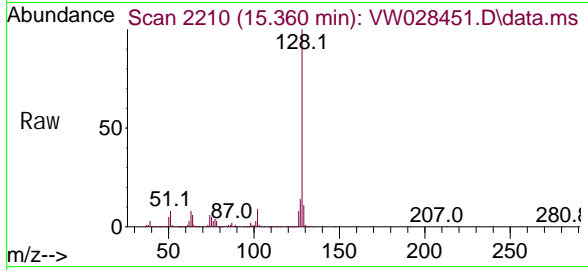




#71
 Naphthalene
 Concen: 26.088 ug/L
 RT: 15.360 min Scan# 2210
 Delta R.T. 0.006 min
 Lab File: VW028451.D
 Acq: 16 Apr 2024 14:49

Instrument : MSVOA_W
 ClientSampleId :

Tgt Ion: 128 Resp: 308014
 Ion Ratio Lower Upper
 128 100
 127 13.3 10.7 16.1
 129 10.7 8.5 12.7



#72
 1,2,3-Trichlorobenzene
 Concen: 20.281 ug/L
 RT: 15.549 min Scan# 2241
 Delta R.T. 0.006 min
 Lab File: VW028451.D
 Acq: 16 Apr 2024 14:49

Tgt Ion: 180 Resp: 120062
 Ion Ratio Lower Upper
 180 100
 182 98.0 75.7 113.5
 145 33.7 26.2 39.4

