

Data Path : Z:\voasrv\HPCHEM1\MSVOA\_W\Data\VW041624\  
 Data File : VW028449.D  
 Acq On : 16 Apr 2024 14:02  
 Operator : SY/MD  
 Sample : P2144-10  
 Misc : 5.11g/10mL/MSVOA\_W/SOIL/A  
 ALS Vial : 1 Sample Multiplier: 1

Instrument :  
 MSVOA\_W  
 ClientSampleId :  
 E07Z0

Integration Parameters: LSCINT.P

Integrator: RTE  
 Smoothing : OFF  
 Sampling : 1  
 Start Thrs : 0.2  
 Stop Thrs : 0

Filtering: 5  
 Min Area: 0 % of largest Peak  
 Max Peaks: 100  
 Peak Location: TOP

If leading or trailing edge < 100 prefer < Baseline drop else tangent >  
 Peak separation: 5

Method : Z:\voasrv\HPCHEM1\MSVOA\_W\Method\SFAMWLM040824SMA.M  
 Title : SFAM01.0

Signal : TIC: VW028449.D\data.ms

peak #	R.T. min	first scan	max scan	last scan	PK TY	peak height	corr. area	corr. % max.	% of total
1	2.363	72	78	90	rBV	134643	306742	15.13%	1.959%
2	2.899	159	166	183	rBV	94349	267035	13.17%	1.705%
3	3.612	279	283	285	rBV5	1348	1453	0.07%	0.009%
4	3.637	285	287	290	rVV4	1281	1085	0.05%	0.007%
5	3.698	295	297	298	rVV2	1317	780	0.04%	0.005%
6	3.929	332	335	338	rBV5	939	1297	0.06%	0.008%
7	4.027	338	351	366	rBV	230136	680274	33.55%	4.344%
8	4.277	388	392	393	rBV4	1159	1660	0.08%	0.011%
9	4.295	394	395	399	rVB4	1394	1632	0.08%	0.010%
10	4.509	428	430	434	rBV5	1228	1012	0.05%	0.006%
11	4.765	470	472	476	rVB5	1072	1170	0.06%	0.007%
12	4.807	476	479	482	rBV5	1138	1013	0.05%	0.006%
13	4.838	482	484	488	rBV4	1235	1171	0.06%	0.007%
14	5.033	514	516	518	rVB3	1447	1096	0.05%	0.007%
15	5.057	518	520	522	rBV3	1211	1137	0.06%	0.007%
16	5.100	523	527	531	rVV7	1340	2009	0.10%	0.013%
17	5.173	535	539	542	rBV6	1161	1868	0.09%	0.012%
18	5.295	557	559	561	rBV3	890	933	0.05%	0.006%
19	5.368	567	571	572	rBV4	1187	1333	0.07%	0.009%
20	5.399	572	576	577	rVV4	643	714	0.04%	0.005%
21	5.441	580	583	584	rVB3	1060	1094	0.05%	0.007%
22	5.588	605	607	609	rBV2	1103	1033	0.05%	0.007%
23	5.746	631	633	634	rVB2	1723	1111	0.05%	0.007%
24	5.771	634	637	641	rBV6	1051	2262	0.11%	0.014%
25	5.825	645	646	647	rBV	1168	719	0.04%	0.005%
26	5.880	651	655	657	rBV5	1026	1693	0.08%	0.011%
27	6.051	682	683	685	rVB2	1322	744	0.04%	0.005%
28	6.075	685	687	693	rBV7	1210	2367	0.12%	0.015%
29	6.148	698	699	702	rBV3	883	839	0.04%	0.005%
30	6.283	719	721	722	rBV2	842	787	0.04%	0.005%
31	6.325	727	728	730	rBV2	895	912	0.04%	0.006%
32	6.417	739	743	744	rBV4	1204	1572	0.08%	0.010%
33	6.435	744	746	751	rVB6	1508	1753	0.09%	0.011%
34	6.740	794	796	798	rBV3	858	973	0.05%	0.006%
35	6.795	803	805	806	rBV2	902	718	0.04%	0.005%
36	6.837	809	812	815	rBV5	1147	1505	0.07%	0.010%

Data Path : Z:\voasrv\HPCHEM1\MSVOA\_W\Data\VW041624\  
 Data File : VW028449.D  
 Acq On : 16 Apr 2024 14:02  
 Operator : SY/MD  
 Sample : P2144-10  
 Misc : 5.11g/10mL/MSVOA\_W/SOIL/A  
 ALS Vial : 1 Sample Multiplier: 1

Instrument :  
 MSVOA\_W  
 ClientSampleId :  
 E07Z0

Integration Parameters: LSCINT.P

Integrator: RTE  
 Smoothing : OFF  
 Sampling : 1  
 Start Thrs : 0.2  
 Stop Thrs : 0

Filtering: 5  
 Min Area: 0 % of largest Peak  
 Max Peaks: 100  
 Peak Location: TOP

If leading or trailing edge < 100 prefer < Baseline drop else tangent >  
 Peak separation: 5

Method : Z:\voasrv\HPCHEM1\MSVOA\_W\Method\SFAMWLM040824SMA.M  
 Title : SFAM01.0

37	6.898	819	822	823	rBV3	1049	973	0.05%	0.006%
38	6.984	834	836	839	rBV4	883	887	0.04%	0.006%
39	7.075	843	851	869	rVV2	45972	142247	7.02%	0.908%
40	7.386	899	902	903	rBV3	1127	1193	0.06%	0.008%
41	7.502	917	921	923	rBV5	850	1267	0.06%	0.008%
42	7.648	934	945	958	rBV	332045	801051	39.51%	5.116%
43	8.276	1037	1048	1066	rBV2	657154	1908890	94.14%	12.191%
44	8.508	1083	1086	1090	rBV6	1603	1863	0.09%	0.012%
45	8.569	1093	1096	1097	rBV2	1288	1137	0.06%	0.007%
46	8.660	1109	1111	1112	rBV2	1005	795	0.04%	0.005%
47	8.770	1127	1129	1131	rVB3	1152	869	0.04%	0.006%
48	8.843	1131	1141	1151	rBV	680420	1376423	67.88%	8.790%
49	9.038	1171	1173	1174	rBV2	983	800	0.04%	0.005%
50	9.172	1193	1195	1197	rBV3	935	857	0.04%	0.005%
51	9.276	1203	1212	1221	rBV	432682	883099	43.55%	5.640%
52	9.575	1257	1261	1262	rBV3	1380	1286	0.06%	0.008%
53	9.794	1295	1297	1300	rBV4	1077	1094	0.05%	0.007%
54	9.910	1314	1316	1317	rBV2	1247	798	0.04%	0.005%
55	10.032	1329	1336	1349	rVB	235281	424342	20.93%	2.710%
56	10.318	1374	1383	1392	rBV	917055	1612991	79.55%	10.301%
57	10.575	1419	1425	1437	rVB	151203	254464	12.55%	1.625%
58	10.788	1458	1460	1463	rBV4	1010	867	0.04%	0.006%
59	10.861	1463	1472	1478	rBV	1163250	2027664	100.00%	12.949%
60	10.922	1478	1482	1495	rVB	181698	303174	14.95%	1.936%
61	11.160	1518	1521	1524	rBV5	1498	2031	0.10%	0.013%
62	11.452	1567	1569	1572	rBV4	1229	760	0.04%	0.005%
63	11.489	1574	1575	1579	rBV4	1159	1329	0.07%	0.008%
64	11.629	1589	1598	1609	rBV	940797	1576563	77.75%	10.068%
65	11.824	1627	1630	1631	rBV3	2144	1977	0.10%	0.013%
66	11.928	1645	1647	1649	rVB3	1188	1068	0.05%	0.007%
67	11.958	1649	1652	1653	rBV3	1084	1219	0.06%	0.008%
68	12.044	1664	1666	1670	rBV5	1327	1510	0.07%	0.010%
69	12.166	1681	1686	1693	rVV9	2044	4908	0.24%	0.031%
70	12.221	1693	1695	1700	rVV6	733	1200	0.06%	0.008%
71	12.288	1703	1706	1710	rBV5	1235	1202	0.06%	0.008%
72	12.379	1719	1721	1723	rBV3	1315	1172	0.06%	0.007%
73	12.599	1749	1757	1764	rBV3	9560	21452	1.06%	0.137%
74	12.690	1765	1772	1780	rVB	284929	466182	22.99%	2.977%
75	12.830	1794	1795	1798	rVB3	1046	967	0.05%	0.006%
76	12.861	1798	1800	1802	rBV3	1022	1018	0.05%	0.007%

Data Path : Z:\voasrv\HPCHEM1\MSVOA\_W\Data\VW041624\  
 Data File : VW028449.D  
 Acq On : 16 Apr 2024 14:02  
 Operator : SY/MD  
 Sample : P2144-10  
 Misc : 5.11g/10mL/MSVOA\_W/SOIL/A  
 ALS Vial : 1 Sample Multiplier: 1

Instrument :  
 MSVOA\_W  
 ClientSampleId :  
 E07Z0

Integration Parameters: LSCINT.P

Integrator: RTE  
 Smoothing : OFF Filtering: 5  
 Sampling : 1 Min Area: 0 % of largest Peak  
 Start Thrs: 0.2 Max Peaks: 100  
 Stop Thrs : 0 Peak Location: TOP

If leading or trailing edge < 100 prefer < Baseline drop else tangent >  
 Peak separation: 5

Method : Z:\voasrv\HPCHEM1\MSVOA\_W\Method\SFAMWLM040824SMA.M  
 Title : SFAM01.0

77	12.891	1802	1805	1808	rBV5	1234	2238	0.11%	0.014%
78	13.080	1833	1836	1842	rVB7	1191	2126	0.10%	0.014%
79	13.129	1842	1844	1847	rBV4	1018	1159	0.06%	0.007%
80	13.556	1906	1914	1923	rBV	867173	1386603	68.38%	8.855%
81	13.848	1955	1962	1972	rVB	673796	1095462	54.03%	6.996%
82	14.056	1993	1996	2003	rVB	8384	15309	0.76%	0.098%
83	14.184	2015	2017	2018	rBV2	899	747	0.04%	0.005%
84	14.415	2053	2055	2057	rBV3	1058	866	0.04%	0.006%
85	14.470	2063	2064	2067	rBV3	1238	1120	0.06%	0.007%
86	14.513	2068	2071	2080	rVB10	3986	7038	0.35%	0.045%
87	14.671	2095	2097	2099	rBV3	1100	1016	0.05%	0.006%
88	14.964	2143	2145	2146	rBV2	1324	859	0.04%	0.005%
89	15.043	2154	2158	2159	rBV4	730	975	0.05%	0.006%
90	15.116	2168	2170	2172	rBV3	1625	1562	0.08%	0.010%
91	15.379	2211	2213	2214	rBV2	1361	1242	0.06%	0.008%
92	15.555	2238	2242	2243	rBV4	1403	1551	0.08%	0.010%
93	15.860	2290	2292	2293	rBV2	1084	791	0.04%	0.005%
94	15.878	2293	2295	2297	rVB3	1433	1068	0.05%	0.007%
95	15.903	2297	2299	2302	rVB4	1272	1168	0.06%	0.007%
96	16.360	2373	2374	2376	rVB2	1467	819	0.04%	0.005%
97	16.397	2376	2380	2382	rBV5	1441	1923	0.09%	0.012%
98	16.531	2399	2402	2405	rBV5	1110	1263	0.06%	0.008%
99	16.561	2405	2407	2410	rBV4	1460	1791	0.09%	0.011%
100	16.775	2440	2442	2444	rBV3	1138	1051	0.05%	0.007%

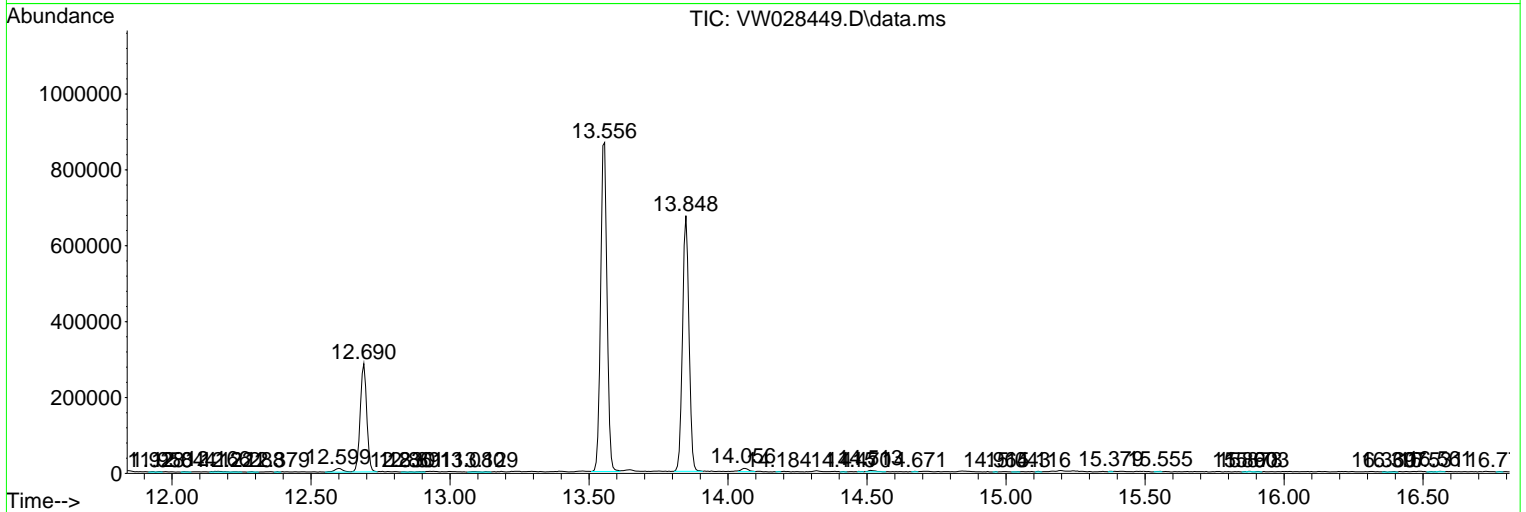
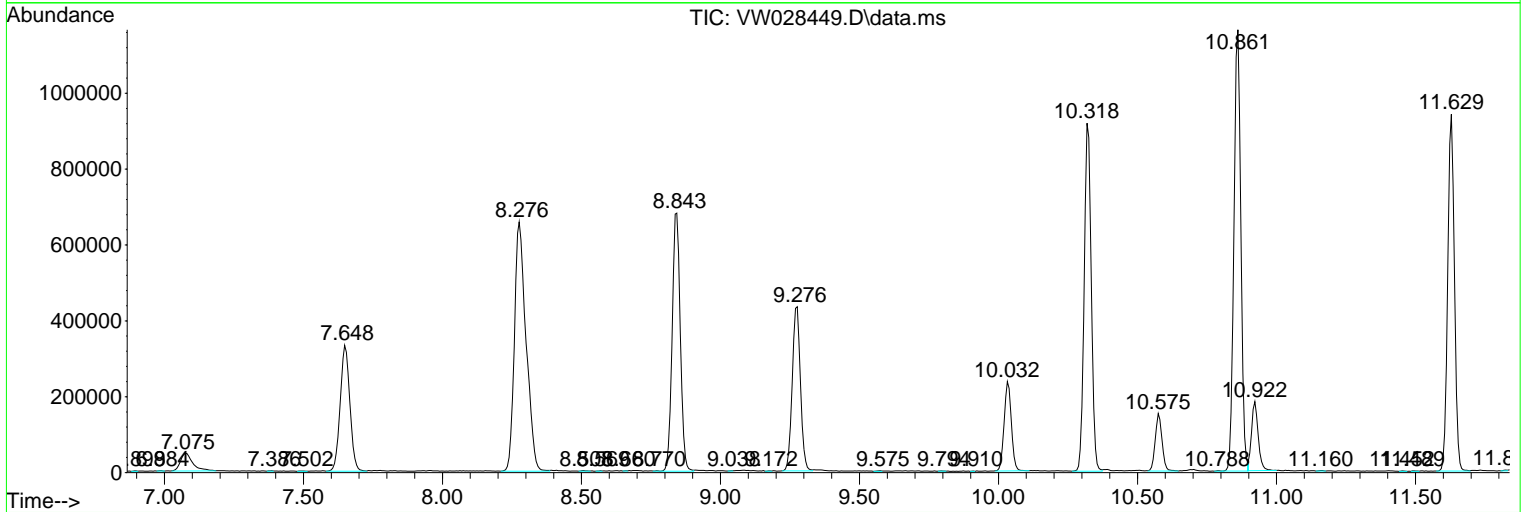
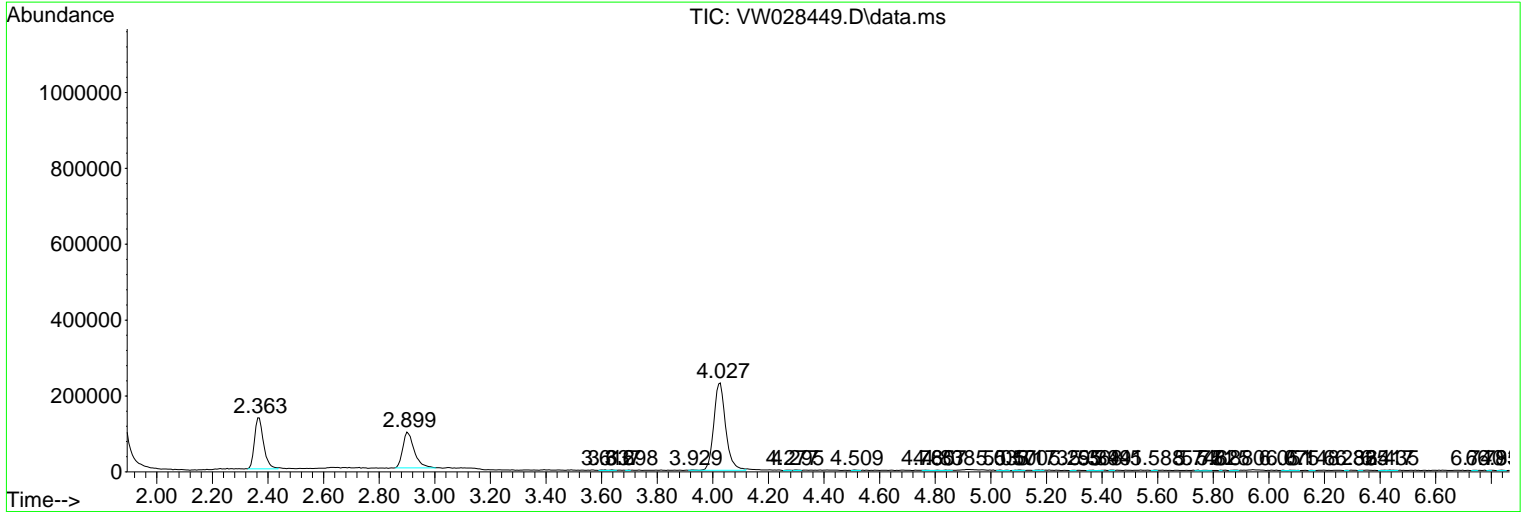
Sum of corrected areas: 15658832

Data Path : Z:\voasrv\HPCHEM1\MSVOA\_W\Data\VW041624\  
 Data File : VW028449.D  
 Acq On : 16 Apr 2024 14:02  
 Operator : SY/MD  
 Sample : P2144-10  
 Misc : 5.11g/10mL/MSVOA\_W/SOIL/A  
 ALS Vial : 1 Sample Multiplier: 1

Instrument :  
 MSVOA\_W  
 ClientSampleId :  
 E07Z0

Quant Method : Z:\voasrv\HPCHEM1\MSVOA\_W\Method\SFAMWLM040824SMA.M  
 Quant Title : SFAM01.0

TIC Library : C:\Database\NIST20.L  
 TIC Integration Parameters: LSCINT.P



Library Search Compound Report

Data Path : Z:\voasrv\HPCHEM1\MSVOA\_W\Data\VW041624\  
Data File : VW028449.D  
Acq On : 16 Apr 2024 14:02  
Operator : SY/MD  
Sample : P2144-10  
Misc : 5.11g/10mL/MSVOA\_W/SOIL/A  
ALS Vial : 1 Sample Multiplier: 1

Instrument :  
MSVOA\_W  
ClientSampleId :  
E07Z0

Quant Method : Z:\voasrv\HPCHEM1\MSVOA\_W\Method\SFAMWLM040824SMA.M  
Quant Title : SFAM01.0

TIC Library : C:\Database\NIST20.L  
TIC Integration Parameters: LSCINT.P

No Library Search Compounds Detected

\*\*\*\*\*

Data Path : Z:\voasrv\HPCHEM1\MSVOA\_W\Data\VW041624\  
Data File : VW028449.D  
Acq On : 16 Apr 2024 14:02  
Operator : SY/MD  
Sample : P2144-10  
Misc : 5.11g/10mL/MSVOA\_W/SOIL/A  
ALS Vial : 1 Sample Multiplier: 1

Instrument :  
MSVOA\_W  
ClientSampleId :  
E07Z0

Quant Method : Z:\voasrv\HPCHEM1\MSVOA\_W\Method\SFAMWLM040824SMA.M  
Quant Title : SFAM01.0

TIC Library : C:\Database\NIST20.L  
TIC Integration Parameters: LSCINT.P

TIC Top Hit name	RT	EstConc	Units	Response	--Internal Standard--			
					#	RT	Resp	Conc

---