

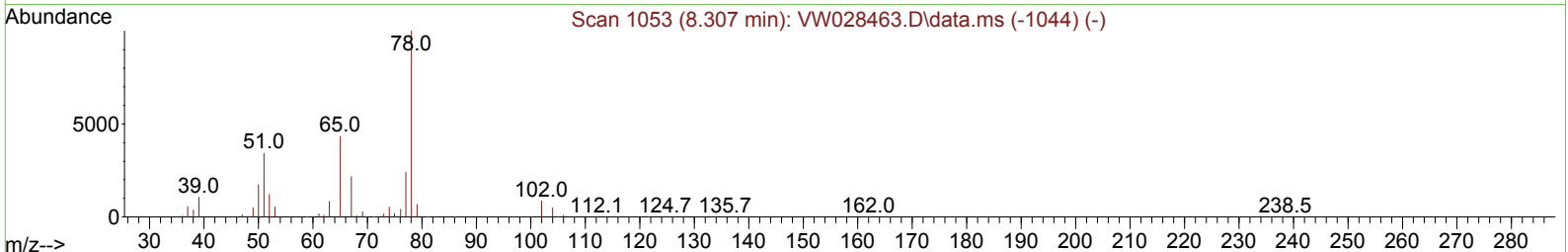
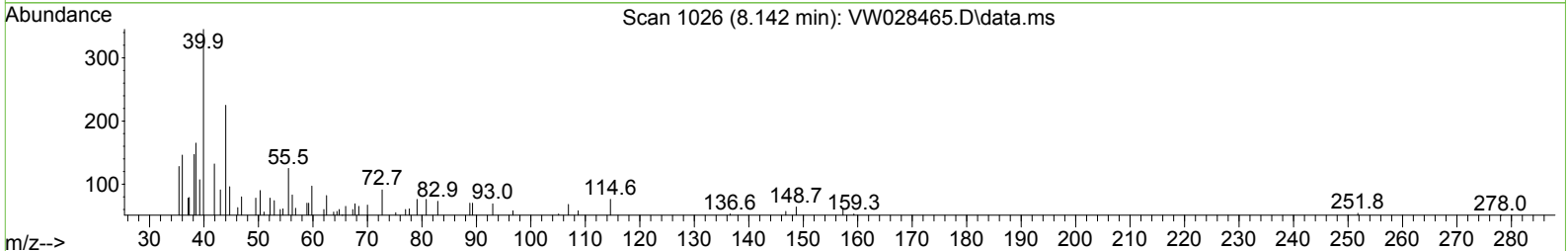
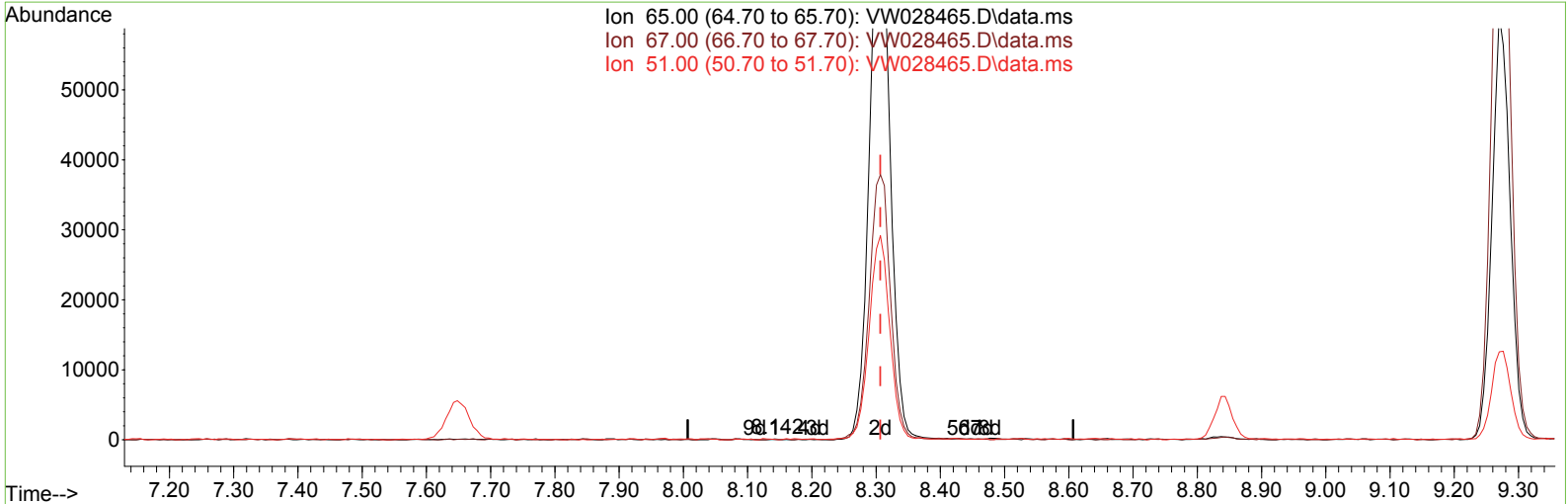
Data Path : Z:\voasrv\HPCHEM1\MSVOA\_W\Data\VW041724\  
 Data File : VW028465.D  
 Acq On : 17 Apr 2024 11:04  
 Operator : SY/MD  
 Sample : P2144-09RE  
 Misc : 5.48g/10mL/MSVOA\_W/SOIL/B  
 ALS Vial : 1 Sample Multiplier: 1

Instrument :  
 MSVOA\_W  
 ClientSampleId :  
 E07Y9

Manual Integrations APPROVED

Quant Time: Apr 18 02:21:14 2024  
 Quant Method : Z:\voasrv\HPCHEM1\MSVOA\_W\Method\SFAMWLM040824SMA.M  
 Quant Title : SFAM01.0  
 QLast Update : Thu Apr 18 02:19:47 2024  
 Response via : Initial Calibration

Reviewed By : Semsettin Yesilyurt 04/18/2024  
 Supervised By : Mahesh Dadoda 04/19/2024



TIC: VW028465.D\data.ms

(26) 1,2-Dichloroethane-d4 (S)

8.142min (-0.165) 0.02 ug/L

response 126

Ion	Exp%	Act%
65.00	100.00	100.00
67.00	52.10	39.68
51.00	108.40	131.75
0.00	0.00	0.00

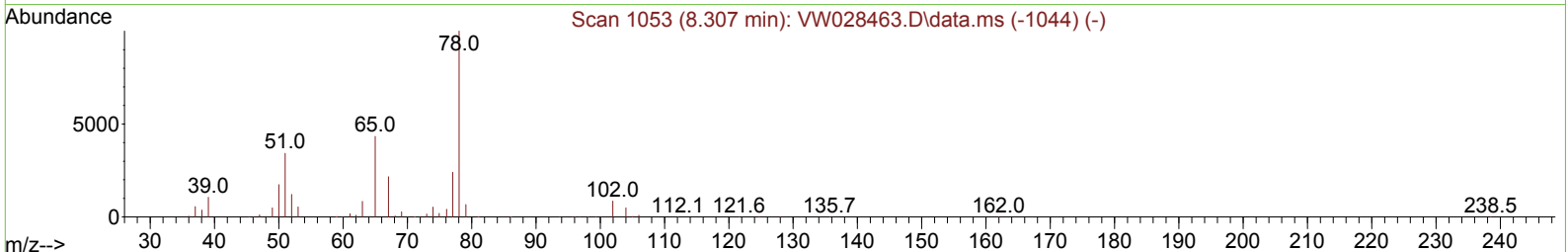
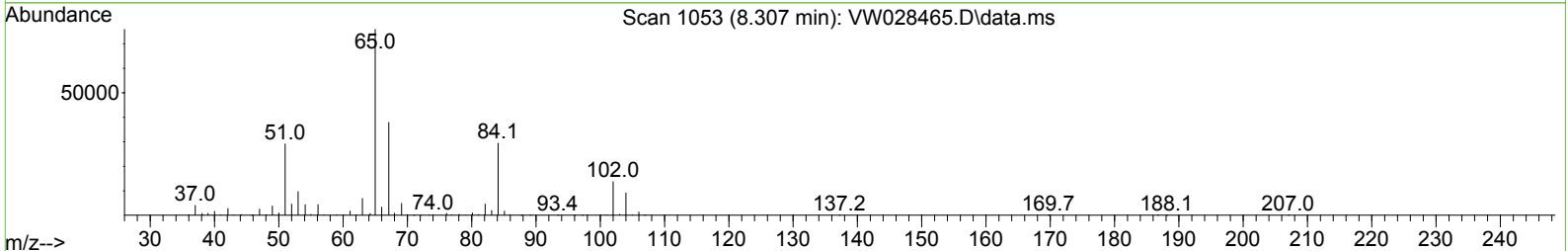
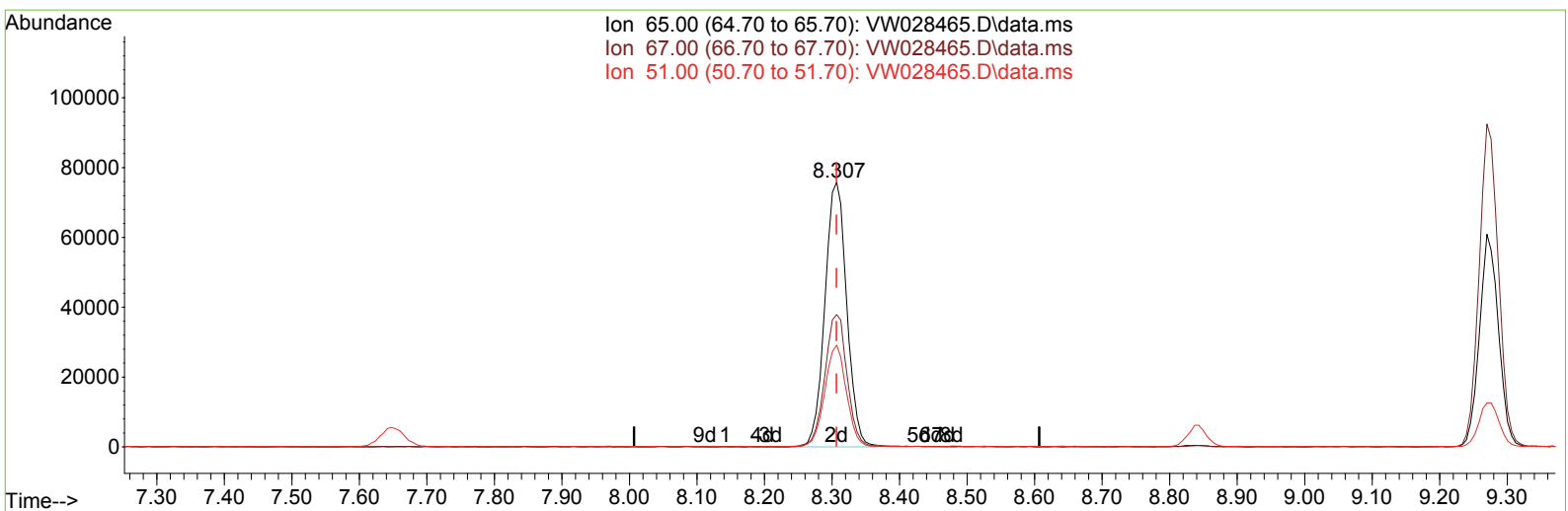
Data Path : Z:\voasrv\HPCHEM1\MSVOA\_W\Data\VW041724\  
 Data File : VW028465.D  
 Acq On : 17 Apr 2024 11:04  
 Operator : SY/MD  
 Sample : P2144-09RE  
 Misc : 5.48g/10mL/MSVOA\_W/SOIL/B  
 ALS Vial : 1 Sample Multiplier: 1

Instrument :  
 MSVOA\_W  
 ClientSampleId :  
 E07Y9

Manual Integrations APPROVED

Reviewed By : Semsettin Yesilyurt 04/18/2024  
 Supervised By : Mahesh Dadoda 04/19/2024

Quant Time: Apr 18 02:21:14 2024  
 Quant Method : Z:\voasrv\HPCHEM1\MSVOA\_W\Method\SFAMWLM040824SMA.M  
 Quant Title : SFAM01.0  
 QLast Update : Thu Apr 18 02:19:47 2024  
 Response via : Initial Calibration



TIC: VW028465.D\data.ms

(26) 1,2-Dichloroethane-d4 (S)

8.307min (-0.000) 23.38 ug/L m

response 169534

Ion	Exp%	Act%
65.00	100.00	100.00
67.00	52.10	0.03#
51.00	108.40	0.10#
0.00	0.00	0.00

Data Path : Z:\voasrv\HPCHEM1\MSVOA\_W\Data\VW041724\  
 Data File : VW028465.D  
 Acq On : 17 Apr 2024 11:04  
 Operator : SY/MD  
 Sample : P2144-09RE  
 Misc : 5.48g/10mL/MSVOA\_W/SOIL/B  
 ALS Vial : 1 Sample Multiplier: 1

**Instrument :**  
 MSVOA\_W  
**ClientSampleId :**  
 E07Y9

**Manual IntegrationsAPPROVED**

Reviewed By :Semsettin Yesilyurt 04/18/2024  
 Supervised By :Mahesh Dadoda 04/19/2024

Quant Time: Apr 18 02:21:14 2024  
 Quant Method : Z:\voasrv\HPCHEM1\MSVOA\_W\Method\SFAMWLM040824SMA.M  
 Quant Title : SFAM01.0  
 QLast Update : Thu Apr 18 02:19:47 2024  
 Response via : Initial Calibration

Compound	R.T.	QIon	Response	Conc	Units	Dev(Min)
<b>Internal Standards</b>						
1) 1,4-Difluorobenzene	8.843	114	534656	25.000	ug/L	0.00
28) Chlorobenzene-d5	11.629	117	459382	25.000	ug/L	0.00
58) 1,4-Dichlorobenzene-d4	13.556	152	202851	25.000	ug/L	0.00
<b>System Monitoring Compounds</b>						
4) Vinyl Chloride-d3	2.369	65	177457	20.703	ug/L	0.00
Spiked Amount	25.000	Range 30 - 150	Recovery =	82.800%		
7) Chloroethane-d5	2.905	69	140954	21.697	ug/L	0.00
Spiked Amount	25.000	Range 30 - 150	Recovery =	86.800%		
11) 1,1-Dichloroethene-d2	4.021	65	76328	21.028	ug/L	0.00
Spiked Amount	25.000	Range 45 - 110	Recovery =	84.120%		
21) 2-Butanone-d5	7.075	46	72222	45.028	ug/L	0.00
Spiked Amount	50.000	Range 20 - 135	Recovery =	90.060%		
24) Chloroform-d	7.648	84	306068	21.938	ug/L	0.00
Spiked Amount	25.000	Range 40 - 150	Recovery =	87.760%		
26) 1,2-Dichloroethane-d4	8.307	65	169534m	23.383	ug/L	0.00
Spiked Amount	25.000	Range 70 - 130	Recovery =	93.520%		
32) Benzene-d6	8.276	84	617777	24.617	ug/L	0.00
Spiked Amount	25.000	Range 20 - 135	Recovery =	98.480%		
36) 1,2-Dichloropropane-d6	9.270	67	183389	24.585	ug/L	0.00
Spiked Amount	25.000	Range 70 - 120	Recovery =	98.320%		
41) Toluene-d8	10.325	98	549672	24.087	ug/L	0.00
Spiked Amount	25.000	Range 30 - 130	Recovery =	96.360%		
43) trans-1,3-Dichloroprop...	10.575	79	68591	23.125	ug/L	0.00
Spiked Amount	25.000	Range 30 - 135	Recovery =	92.480%		
47) 2-Hexanone-d5	10.922	63	51136	49.488	ug/L	0.00
Spiked Amount	50.000	Range 20 - 135	Recovery =	98.980%		
56) 1,1,2,2-Tetrachloroeth...	12.690	84	124136	23.586	ug/L	0.00
Spiked Amount	25.000	Range 45 - 120	Recovery =	94.360%		
66) 1,2-Dichlorobenzene-d4	13.848	152	150332	23.434	ug/L	0.00
Spiked Amount	25.000	Range 75 - 120	Recovery =	93.720%		
<b>Target Compounds</b>						
16) Methylene chloride	4.923	84	23359	2.887	ug/L	99
46) Tetrachloroethene	10.861	164	244480	42.050	ug/L	95

(#) = qualifier out of range (m) = manual integration (+) = signals summed

Data Path : Z:\voasrv\HPCHEM1\MSVOA\_W\Data\VW041724\  
 Data File : VW028465.D  
 Acq On : 17 Apr 2024 11:04  
 Operator : SY/MD  
 Sample : P2144-09RE  
 Misc : 5.48g/10mL/MSVOA\_W/SOIL/B  
 ALS Vial : 1 Sample Multiplier: 1

**Instrument :**  
 MSVOA\_W  
**ClientSampleId :**  
 E07Y9

**Manual IntegrationsAPPROVED**

Reviewed By :Semsettin Yesilyurt 04/18/2024  
 Supervised By :Mahesh Dadoda 04/19/2024

Quant Time: Apr 18 02:21:14 2024  
 Quant Method : Z:\voasrv\HPCHEM1\MSVOA\_W\Method\SFAMWLM040824SMA.M  
 Quant Title : SFAM01.0  
 QLast Update : Thu Apr 18 02:19:47 2024  
 Response via : Initial Calibration

