

Data Path : Z:\VOASRV\HPCHEM1\MSVOA W\DATA\VW042319\
 Data File : VW010100.D
 Acq On : 23 Apr 2019 16:30
 Operator : SY/VA
 Sample : K2455-22
 Misc : 5.05G/10ML/MSVOA W/SOIL
 ALS Vial : 1 Sample Multiplier: 1

Instrument :
 MSVOA_W
 ClientSampled :
 GAHS2

Quant Time: Apr 24 04:51:05 2019
 Quant Method : Z:\VOASRV\HPCHEM1\MSVOA_W\METHOD\SOM2WLM041519S.M
 Quant Title : VOC Analysis
 QLast Update : Wed Apr 24 03:51:20 2019
 Response via : Initial Calibration

Internal Standards	R.T.	QIon	Response	Conc	Units	Dev(Min)
1) 1,4-Difluorobenzene	8.84	114	87261	25.00	ug/L	0.00
28) Chlorobenzene-d5	11.63	117	101593	25.00	ug/L	0.00
60) 1,4-Dichlorobenzene-d4	13.56	152	42639	25.00	ug/L	0.00

System Monitoring Compounds

4) Vinyl Chloride-d3	2.35	65	6724	8.15	ug/L	-0.01
Spiked Amount	25.000	Range	30 - 150	Recovery	=	32.60%
7) Chloroethane-d5	2.89	69	8897	10.65	ug/L	0.00
Spiked Amount	25.000	Range	30 - 150	Recovery	=	42.60%
10) 1,1-Dichloroethene-d2	3.99	63	19779	8.65	ug/L	-0.02
Spiked Amount	25.000	Range	45 - 110	Recovery	=	34.60%#
20) 2-Butanone-d5	7.08	46	34580	77.52	ug/L	0.00
Spiked Amount	50.000	Range	20 - 135	Recovery	=	155.04%#
24) Chloroform-d	7.65	84	52788	20.92	ug/L	0.00
Spiked Amount	25.000	Range	40 - 150	Recovery	=	83.68%
26) 1,2-Dichloroethane-d4	8.30	65	45283	28.93	ug/L	0.00
Spiked Amount	25.000	Range	70 - 130	Recovery	=	115.72%
29) Benzene-d6	8.27	84	90086	16.14	ug/L	0.00
Spiked Amount	25.000	Range	20 - 135	Recovery	=	64.56%
33) 1,2-Dichloropropane-d6	9.27	67	40460	22.75	ug/L	0.00
Spiked Amount	25.000	Range	70 - 120	Recovery	=	91.00%
37) Toluene-d8	10.32	98	79022	15.51	ug/L	0.00
Spiked Amount	25.000	Range	30 - 130	Recovery	=	62.04%
38) trans-1,3-Dichloropropene-	10.58	79	18989	22.52	ug/L	0.00
Spiked Amount	25.000	Range	30 - 135	Recovery	=	90.08%
39) 2-Hexanone-d5	10.93	63	23748	60.27	ug/L	0.00
Spiked Amount	50.000	Range	20 - 135	Recovery	=	120.54%
48) 1,1,2,2-Tetrachloroethane-	12.69	84	43642	26.24	ug/L	0.00
Spiked Amount	25.000	Range	45 - 120	Recovery	=	104.96%
61) 1,2-Dichlorobenzene-d4	13.86	152	35469	22.13	ug/L	0.00
Spiked Amount	25.000	Range	75 - 120	Recovery	=	88.52%

Target Compounds

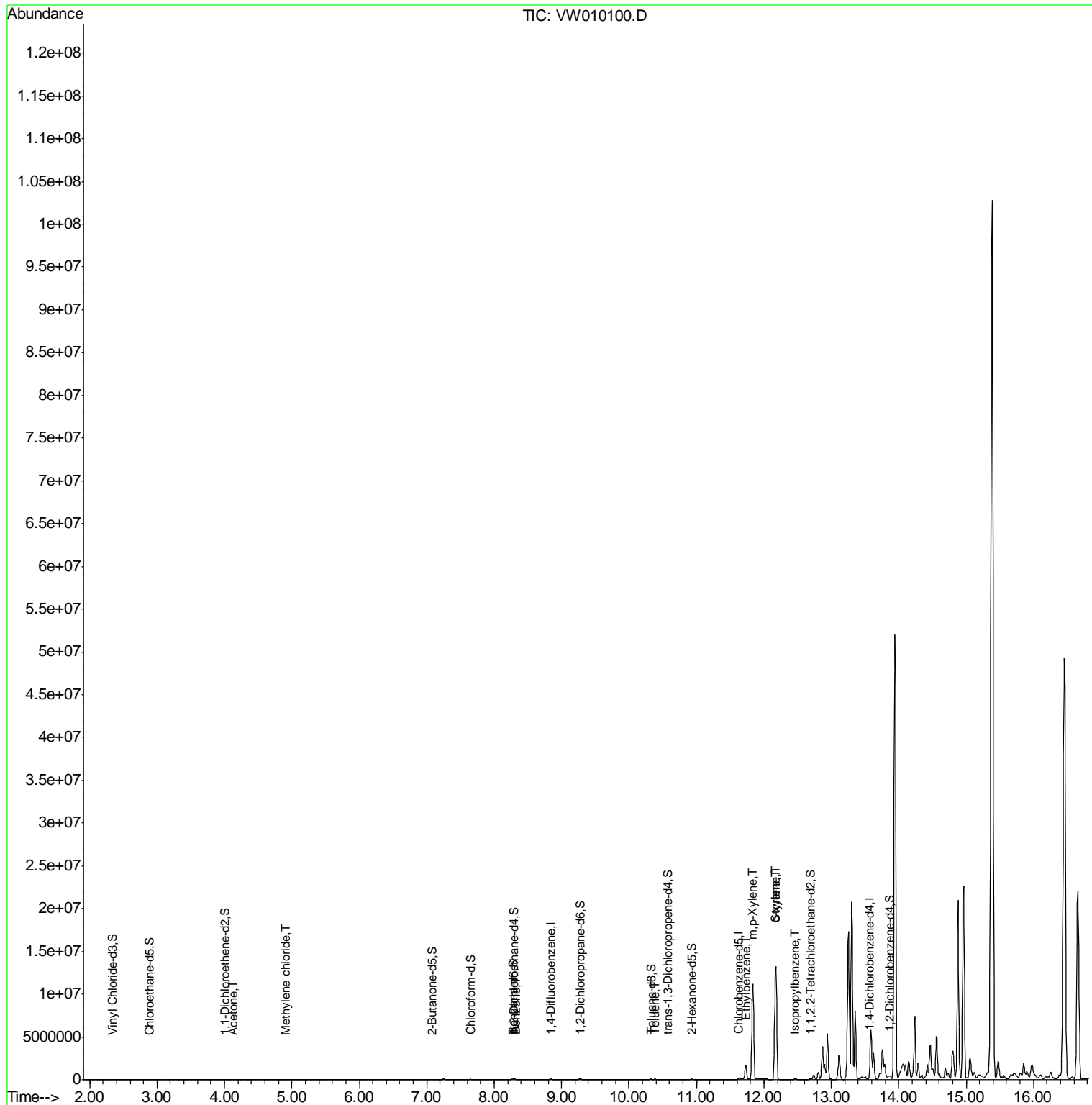
Target Compounds	R.T.	QIon	Response	Conc	Units	Ovalue
13) Acetone	4.12	43	7177	18.093	ug/L	87
16) Methylene chloride	4.90	84	9083	5.749	ug/L	95
34) Benzene	8.32	78	4100	0.685	ug/L	100
44) Toluene	10.38	91	59452	9.364	ug/L	98
53) Ethylbenzene	11.73	91	1147718	161.730	ug/L	100
54) m,p-Xylene	11.83	106	3353104	1291.771	ug/L	99
55) o-xylene	12.17	106	1787200	717.866	ug/L	97
56) Styrene	12.18	104	4715233	1081.896	ug/L	99
57) Isopropylbenzene	12.46	105	60616	9.141	ug/L	98

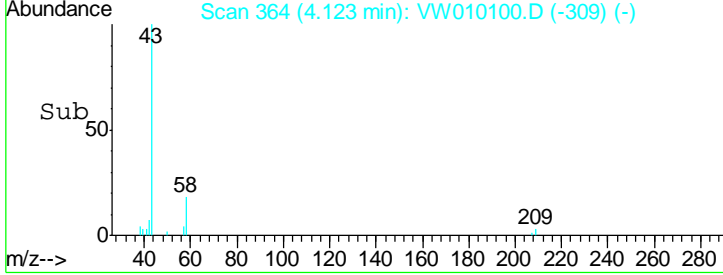
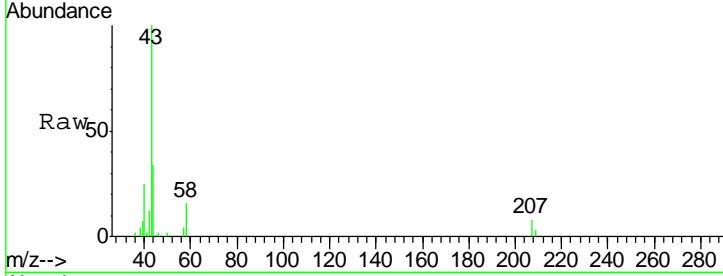
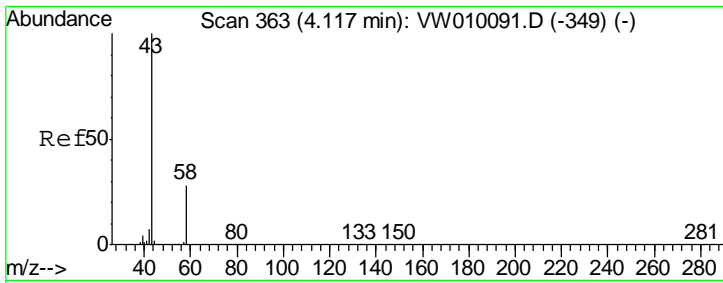
(#) = qualifier out of range (m) = manual integration (+) = signals summed

Data Path : Z:\VOASRV\HPCHEM1\MSVOA W\DATA\VW042319\
 Data File : VW010100.D
 Acq On : 23 Apr 2019 16:30
 Operator : SY/VA
 Sample : K2455-22
 Misc : 5.05G/10ML/MSVOA W/SOIL
 ALS Vial : 1 Sample Multiplier: 1

Instrument :
 MSVOA_W
 ClientSampleId :
 GAHS2

Quant Time: Apr 24 04:51:05 2019
 Quant Method : Z:\VOASRV\HPCHEM1\MSVOA_W\METHOD\SOM2WLM041519S.M
 Quant Title : VOC Analysis
 QLast Update : Wed Apr 24 03:51:20 2019
 Response via : Initial Calibration

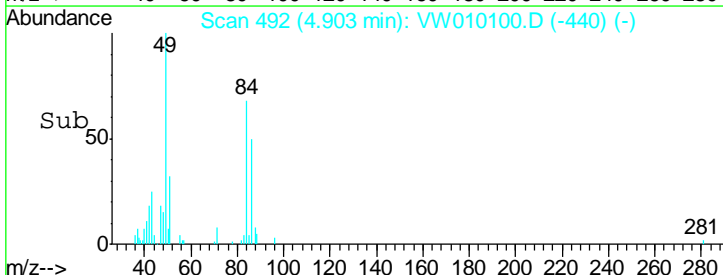
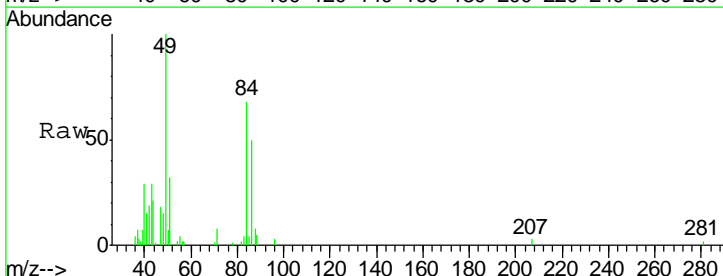
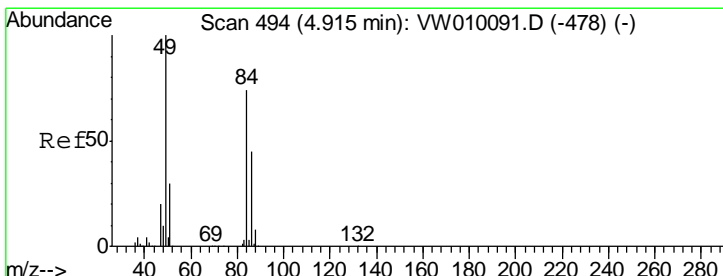
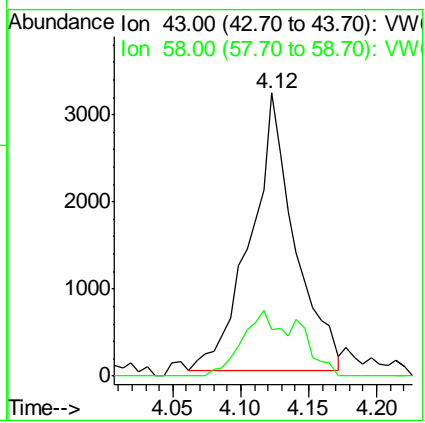




#13
 Acetone
 Concen: 18.093 ug/L
 RT: 4.12 min Scan# 364
 Delta R.T. 0.01 min
 Lab File: VW010100.D
 Acq: 23 Apr 2019 16:30

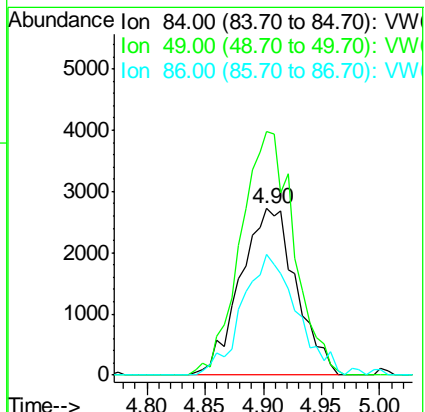
Tgt Ion	Resp	Lower	Upper
43	100		
58	21.2	0.0	56.2

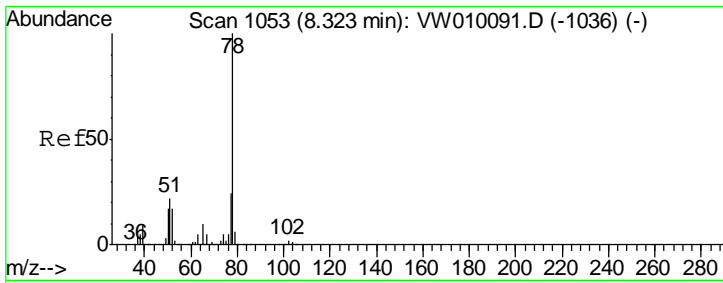
Instrument : MSVOA_W
 ClientSampled : GAHS2



#16
 Methylene chloride
 Concen: 5.749 ug/L
 RT: 4.90 min Scan# 492
 Delta R.T. -0.01 min
 Lab File: VW010100.D
 Acq: 23 Apr 2019 16:30

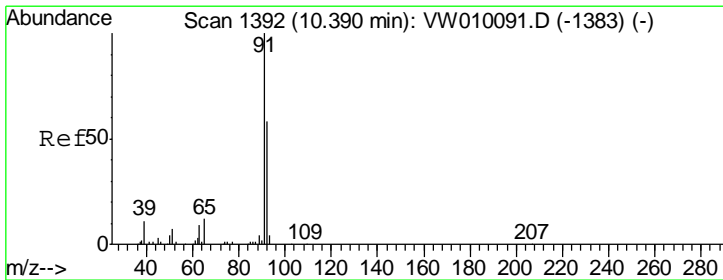
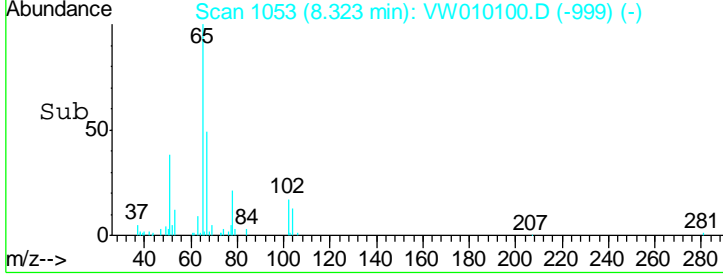
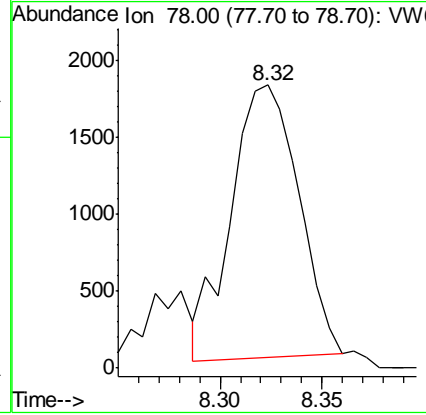
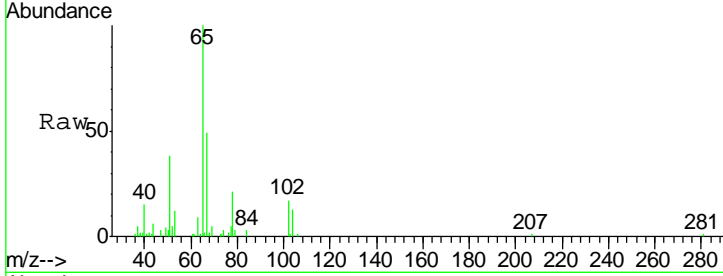
Tgt Ion	Resp	Lower	Upper
84	100		
49	146.1	100.7	187.1
86	72.4	43.8	81.3



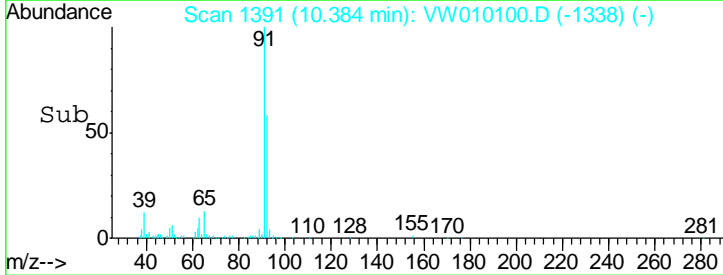
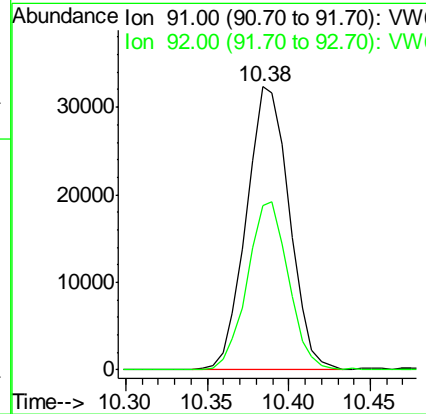
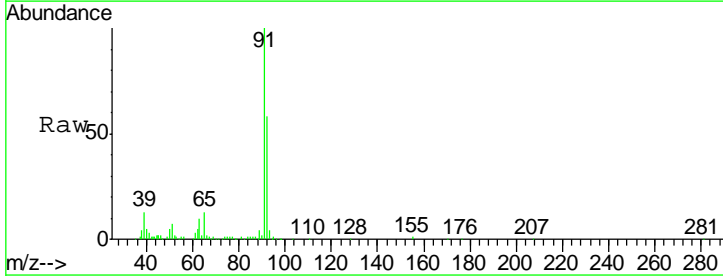


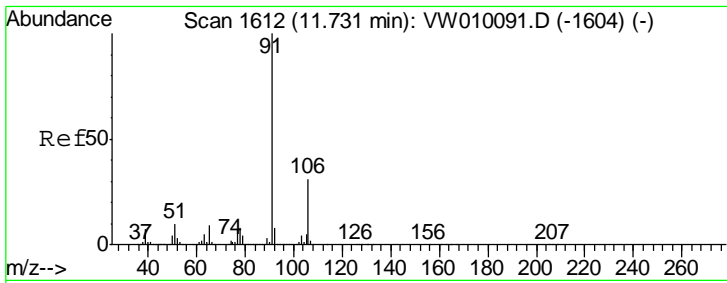
#34
Benzene
Concen: 0.685 ug/L
RT: 8.32 min Scan# 1053
Delta R.T. -0.00 min
Lab File: VW010100.D
Acq: 23 Apr 2019 16:30
Tgt Ion: 78 Resp: 4100

Instrument : MSVOA_W
ClientSampled : GAHS2



#44
Toluene
Concen: 9.364 ug/L
RT: 10.38 min Scan# 1391
Delta R.T. -0.01 min
Lab File: VW010100.D
Acq: 23 Apr 2019 16:30
Tgt Ion: 91 Resp: 59452
Ion Ratio Lower Upper
91 100
92 58.2 39.8 74.0

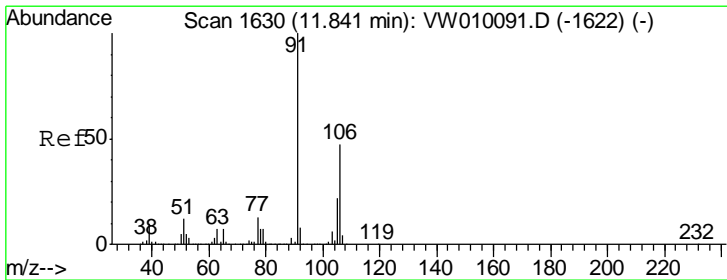
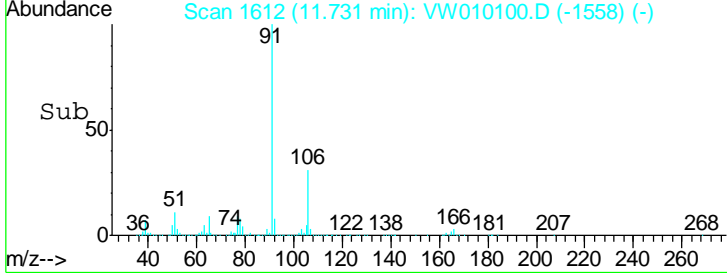
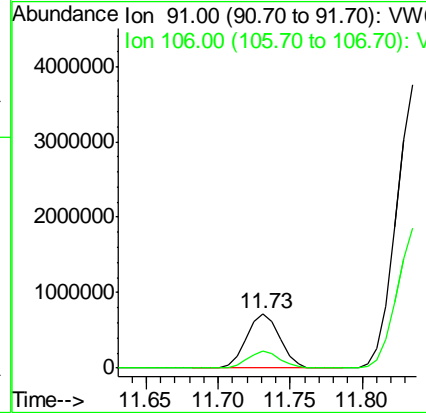
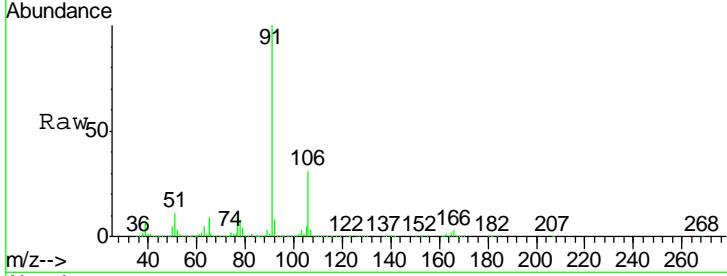




#53
 Ethylbenzene
 Concen: 161.730 ug/L
 RT: 11.73 min Scan# 1612
 Delta R.T. -0.00 min
 Lab File: VW010100.D
 Acq: 23 Apr 2019 16:30

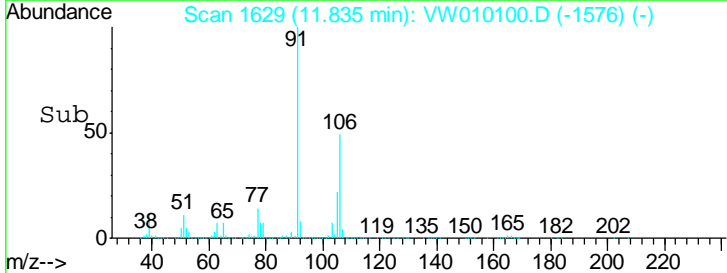
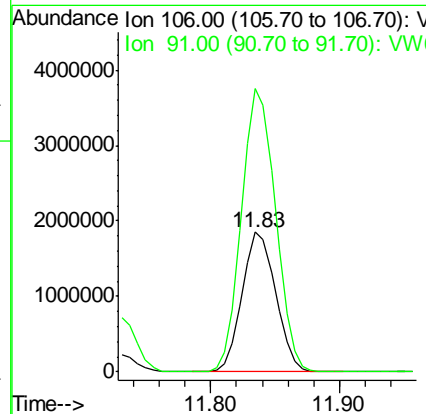
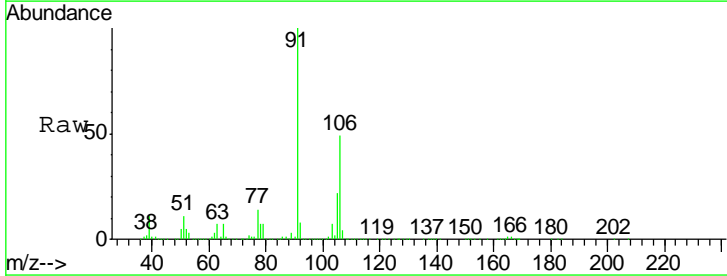
Instrument :
 MSVOA_W
 ClientSampled :
 GAHS2

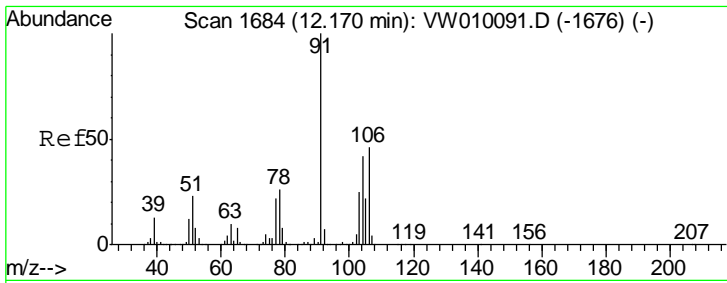
Tgt Ion: 91 Resp: 1147718
 Ion Ratio Lower Upper
 91 100
 106 30.9 21.8 40.4



#54
 m,p-Xylene
 Concen: 1291.771 ug/L
 RT: 11.83 min Scan# 1629
 Delta R.T. -0.01 min
 Lab File: VW010100.D
 Acq: 23 Apr 2019 16:30

Tgt Ion: 106 Resp: 3353104
 Ion Ratio Lower Upper
 106 100
 91 202.8 143.4 266.2

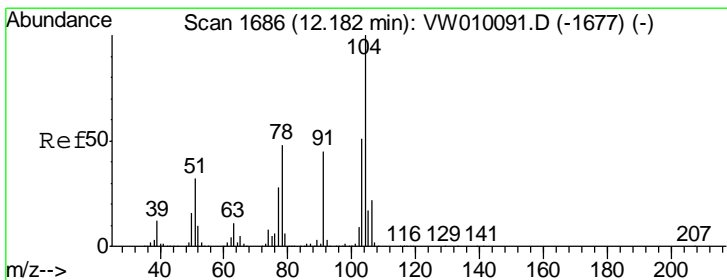
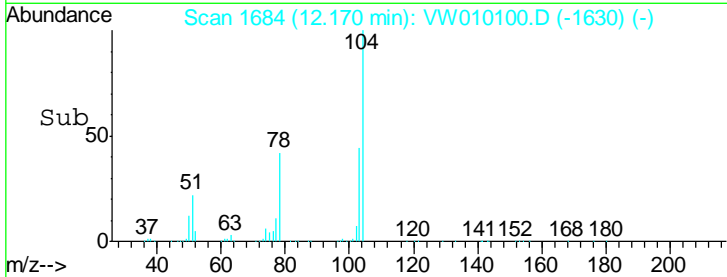
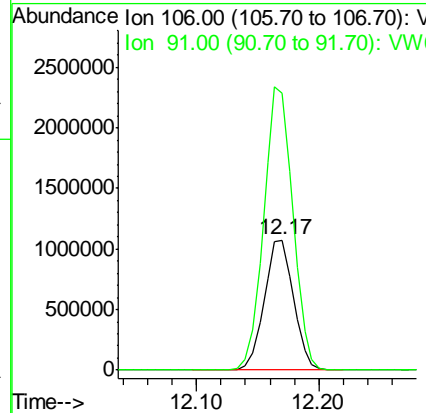
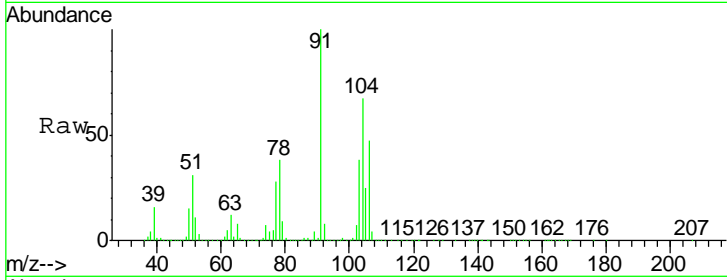




#55
 o-xylene
 Concen: 717.866 ug/L
 RT: 12.17 min Scan# 1684
 Delta R.T. -0.00 min
 Lab File: VW010100.D
 Acq: 23 Apr 2019 16:30

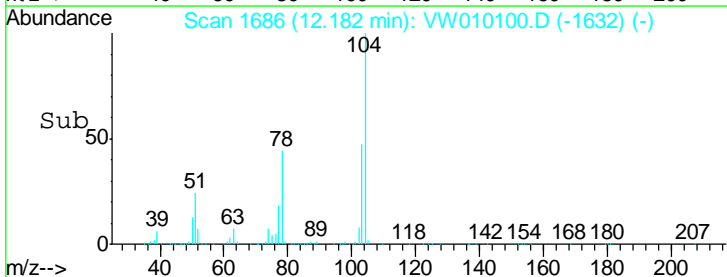
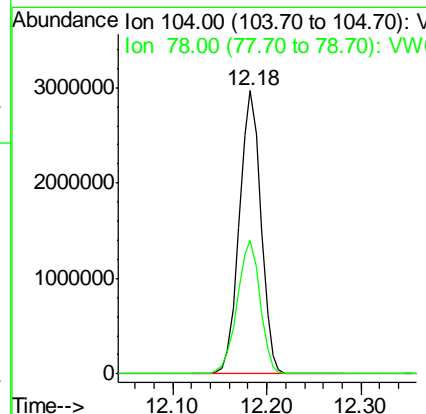
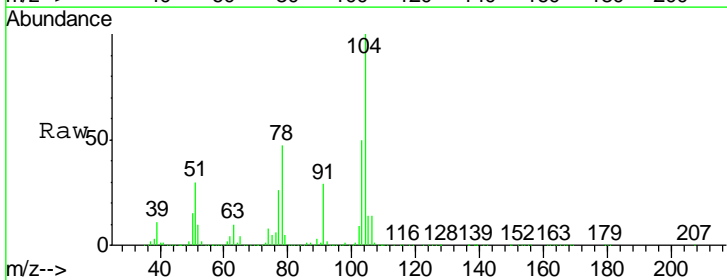
Instrument :
 MSVOA_W
 ClientSampled :
 GAHS2

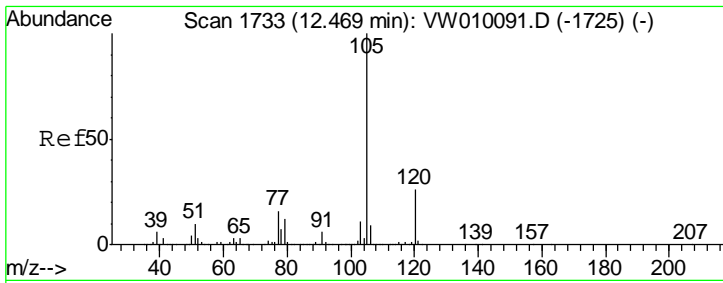
Tgt Ion:106 Resp: 1787200
 Ion Ratio Lower Upper
 106 100
 91 212.8 152.2 282.7



#56
 Styrene
 Concen: 1081.896 ug/L
 RT: 12.18 min Scan# 1686
 Delta R.T. -0.00 min
 Lab File: VW010100.D
 Acq: 23 Apr 2019 16:30

Tgt Ion:104 Resp: 4715233
 Ion Ratio Lower Upper
 104 100
 78 47.1 32.7 60.7





#57
 Isopropylbenzene
 Concen: 9.141 ug/L
 RT: 12.46 min Scan# 1732
 Delta R.T. -0.01 min
 Lab File: VW010100.D
 Acq: 23 Apr 2019 16:30

Instrument : MSVOA_W
 ClientSampled : GAHS2

Tot Ion	Resp	Lower	Upper
105	60616		
120	27.4	20.6	30.8
77	16.4	13.4	20.2

