

Data Path : Z:\voasrv\HPCHEM1\MSVOA_W\Data\VW042523\
 Data File : VW025687.D
 Acq On : 25 Apr 2023 16:58
 Operator : SY/MD
 Sample : 02479-07RE
 Misc : 5.18g/10mL/MSVOA_W/SOIL
 ALS Vial : 1 Sample Multiplier: 1

Instrument :
 MSVOA_W
 ClientSampleId :
 EW948RE

Integration Parameters: LSCINT.P

Integrator: RTE
 Smoothing : OFF
 Sampling : 1
 Start Thrs : 0.2
 Stop Thrs : 0

Filtering: 5
 Min Area: 0 % of largest Peak
 Max Peaks: 100
 Peak Location: TOP

If leading or trailing edge < 100 prefer < Baseline drop else tangent >
 Peak separation: 5

Method : Z:\voasrv\HPCHEM1\MSVOA_W\Method\SFAMWLM040323SMA.M
 Title : SFAM01.0

Signal : TIC: VW025687.D\data.ms

peak #	R.T. min	first scan	max scan	last scan	PK TY	peak height	corr. area	corr. % max.	% of total
1	2.363	72	78	90	rBV	95747	253559	9.34%	1.544%
2	2.899	158	166	178	rBV	100233	287887	10.61%	1.753%
3	3.326	234	236	242	rVB6	1657	2597	0.10%	0.016%
4	3.387	243	246	250	rVV6	1180	1650	0.06%	0.010%
5	3.503	264	265	269	rVB4	2250	1948	0.07%	0.012%
6	3.710	296	299	303	rBV6	2085	2684	0.10%	0.016%
7	3.747	303	305	308	rVB4	1816	1826	0.07%	0.011%
8	4.021	339	350	375	rBV2	226425	802790	29.58%	4.888%
9	4.204	378	380	382	rVV3	1995	1682	0.06%	0.010%
10	4.246	386	387	394	rVB7	2229	2524	0.09%	0.015%
11	4.332	398	401	405	rVB6	2496	3135	0.12%	0.019%
12	4.368	405	407	408	rBV2	3381	2887	0.11%	0.018%
13	4.405	411	413	416	rVB4	2427	1680	0.06%	0.010%
14	4.606	445	446	448	rBV2	2668	2173	0.08%	0.013%
15	4.801	476	478	483	rVB6	1630	2381	0.09%	0.014%
16	4.917	486	497	512	rBV3	69539	274255	10.11%	1.670%
17	5.167	536	538	541	rVB4	1994	2399	0.09%	0.015%
18	5.240	548	550	553	rVB3	2792	2237	0.08%	0.014%
19	5.301	559	560	566	rVV6	1495	1916	0.07%	0.012%
20	5.417	576	579	581	rBV4	1998	2512	0.09%	0.015%
21	5.454	581	585	587	rVV5	1501	1990	0.07%	0.012%
22	5.588	604	607	610	rVB5	2840	3249	0.12%	0.020%
23	5.691	623	624	627	rVB3	1895	1682	0.06%	0.010%
24	5.941	655	665	672	rVV7	9156	27301	1.01%	0.166%
25	5.990	672	673	677	rVB4	2743	3031	0.11%	0.018%
26	6.344	730	731	734	rVB3	2686	2056	0.08%	0.013%
27	6.374	734	736	738	rBV3	1652	1698	0.06%	0.010%
28	6.435	743	746	748	rBV3	1840	1969	0.07%	0.012%
29	6.514	755	759	761	rVB5	1233	1710	0.06%	0.010%
30	6.734	791	795	798	rBV6	2401	4860	0.18%	0.030%
31	6.776	801	802	805	rVV3	1742	1734	0.06%	0.011%
32	6.819	807	809	812	rVV4	1659	1783	0.07%	0.011%
33	7.026	841	843	844	rBV2	2177	2026	0.07%	0.012%
34	7.075	844	851	874	rVV2	76831	256427	9.45%	1.561%
35	7.325	889	892	895	rVB4	2728	2770	0.10%	0.017%
36	7.368	895	899	902	rBV6	1743	2344	0.09%	0.014%

Data Path : Z:\voasrv\HPCHEM1\MSVOA_W\Data\VW042523\
 Data File : VW025687.D
 Acq On : 25 Apr 2023 16:58
 Operator : SY/MD
 Sample : 02479-07RE
 Misc : 5.18g/10mL/MSVOA_W/SOIL
 ALS Vial : 1 Sample Multiplier: 1

Instrument :
 MSVOA_W
 ClientSampleId :
 EW948RE

Integration Parameters: LSCINT.P

Integrator: RTE
 Smoothing : OFF
 Sampling : 1
 Start Thrs: 0.2
 Stop Thrs : 0

Filtering: 5
 Min Area: 0 % of largest Peak
 Max Peaks: 100
 Peak Location: TOP

If leading or trailing edge < 100 prefer < Baseline drop else tangent >
 Peak separation: 5

Method : Z:\voasrv\HPCHEM1\MSVOA_W\Method\SFAMWLM040323SMA.M
 Title : SFAM01.0

37	7.447	908	912	914	rBV5	1340	1681	0.06%	0.010%
38	7.648	935	945	962	rVV	488461	1198263	44.15%	7.296%
39	7.880	981	983	985	rVB3	2200	1769	0.07%	0.011%
40	7.971	996	998	1002	rVB5	3315	3033	0.11%	0.018%
41	8.166	1027	1030	1033	rVB5	1915	2797	0.10%	0.017%
42	8.276	1037	1048	1066	rBV2	932442	2713935	100.00%	16.525%
43	8.404	1066	1069	1071	rBV4	2039	2369	0.09%	0.014%
44	8.624	1103	1105	1109	rVB5	2531	2934	0.11%	0.018%
45	8.691	1112	1116	1120	rBV7	1936	3092	0.11%	0.019%
46	8.764	1125	1128	1131	rVB4	2107	3050	0.11%	0.019%
47	8.843	1131	1141	1151	rBV	1011588	2037858	75.09%	12.409%
48	9.020	1168	1170	1172	rBV3	1708	2066	0.08%	0.013%
49	9.191	1196	1198	1201	rVB4	2007	1893	0.07%	0.012%
50	9.270	1201	1211	1221	rBV	675387	1380198	50.86%	8.404%
51	9.410	1232	1234	1237	rVB4	2203	2126	0.08%	0.013%
52	9.642	1269	1272	1273	rBV3	2001	2495	0.09%	0.015%
53	9.727	1284	1286	1289	rVV4	1774	1864	0.07%	0.011%
54	9.788	1293	1296	1298	rBV4	2310	3403	0.13%	0.021%
55	9.813	1298	1300	1303	rVB3	1990	1973	0.07%	0.012%
56	10.032	1329	1336	1344	rBV	286858	514784	18.97%	3.135%
57	10.251	1369	1372	1375	rVB5	1818	1947	0.07%	0.012%
58	10.325	1375	1384	1392	rBV	1069355	1860073	68.54%	11.326%
59	10.459	1404	1406	1409	rVB4	2127	2083	0.08%	0.013%
60	10.575	1419	1425	1433	rBV	160486	282161	10.40%	1.718%
61	10.703	1441	1446	1450	rVB	12405	20296	0.75%	0.124%
62	10.861	1467	1472	1476	rBV7	4041	6803	0.25%	0.041%
63	10.922	1476	1482	1494	rBV	262281	476934	17.57%	2.904%
64	11.117	1512	1514	1515	rVB2	2579	1850	0.07%	0.011%
65	11.160	1518	1521	1523	rBV4	1472	1655	0.06%	0.010%
66	11.203	1525	1528	1529	rBV2	2667	2264	0.08%	0.014%
67	11.562	1584	1587	1589	rBV4	1961	1919	0.07%	0.012%
68	11.629	1589	1598	1606	rBV	1034332	1730574	63.77%	10.538%
69	11.727	1612	1614	1619	rVB6	4677	6280	0.23%	0.038%
70	11.843	1629	1633	1639	rVV8	2939	5567	0.21%	0.034%
71	11.910	1641	1644	1649	rVB7	2840	3324	0.12%	0.020%
72	12.154	1676	1684	1692	rBV4	13202	29566	1.09%	0.180%
73	12.245	1697	1699	1702	rBV4	1550	1794	0.07%	0.011%
74	12.324	1711	1712	1714	rBV2	1882	1679	0.06%	0.010%
75	12.452	1731	1733	1735	rBV3	2218	2737	0.10%	0.017%
76	12.525	1743	1745	1751	rVB7	1475	2061	0.08%	0.013%

Data Path : Z:\voasrv\HPCHEM1\MSVOA_W\Data\VW042523\
 Data File : VW025687.D
 Acq On : 25 Apr 2023 16:58
 Operator : SY/MD
 Sample : 02479-07RE
 Misc : 5.18g/10mL/MSVOA_W/SOIL
 ALS Vial : 1 Sample Multiplier: 1

Instrument :
 MSVOA_W
 ClientSampleId :
 EW948RE

Integration Parameters: LSCINT.P

Integrator: RTE
 Smoothing : OFF Filtering: 5
 Sampling : 1 Min Area: 0 % of largest Peak
 Start Thrs: 0.2 Max Peaks: 100
 Stop Thrs : 0 Peak Location: TOP

If leading or trailing edge < 100 prefer < Baseline drop else tangent >
 Peak separation: 5

Method : Z:\voasrv\HPCHEM1\MSVOA_W\Method\SFAMWLM040323SMA.M
 Title : SFAM01.0

77	12.599	1751	1757	1764	rBV	25628	49540	1.83%	0.302%
78	12.690	1765	1772	1780	rVV	354578	595280	21.93%	3.625%
79	12.769	1783	1785	1788	rVV4	2915	2188	0.08%	0.013%
80	12.879	1801	1803	1805	rVV3	2583	2344	0.09%	0.014%
81	12.928	1809	1811	1812	rBV2	2780	2242	0.08%	0.014%
82	13.111	1837	1841	1850	rVB2	4436	11914	0.44%	0.073%
83	13.172	1850	1851	1853	rBV2	2289	2191	0.08%	0.013%
84	13.251	1859	1864	1866	rBV5	3159	4988	0.18%	0.030%
85	13.300	1868	1872	1875	rBV6	1878	2949	0.11%	0.018%
86	13.397	1886	1888	1892	rVB5	3023	3102	0.11%	0.019%
87	13.464	1894	1899	1904	rBV8	7483	15156	0.56%	0.092%
88	13.556	1907	1914	1926	rVV	452783	733255	27.02%	4.465%
89	13.848	1954	1962	1970	rBV	366923	594089	21.89%	3.617%
90	13.940	1976	1977	1983	rVB6	2892	2540	0.09%	0.015%
91	14.062	1991	1997	2002	rBV	28385	46028	1.70%	0.280%
92	14.330	2035	2041	2046	rVB10	4565	9980	0.37%	0.061%
93	14.415	2049	2055	2061	rBV9	6110	15226	0.56%	0.093%
94	14.513	2067	2071	2072	rBV4	1961	1870	0.07%	0.011%
95	14.623	2088	2089	2095	rBV6	1697	2549	0.09%	0.016%
96	14.897	2131	2134	2136	rBV4	1645	1812	0.07%	0.011%
97	15.062	2157	2161	2162	rBV4	1957	2982	0.11%	0.018%
98	15.299	2198	2200	2202	rBV3	2340	2178	0.08%	0.013%
99	15.360	2208	2210	2214	rVB4	3439	3336	0.12%	0.020%
100	15.427	2217	2221	2225	rVV2	12446	20511	0.76%	0.125%

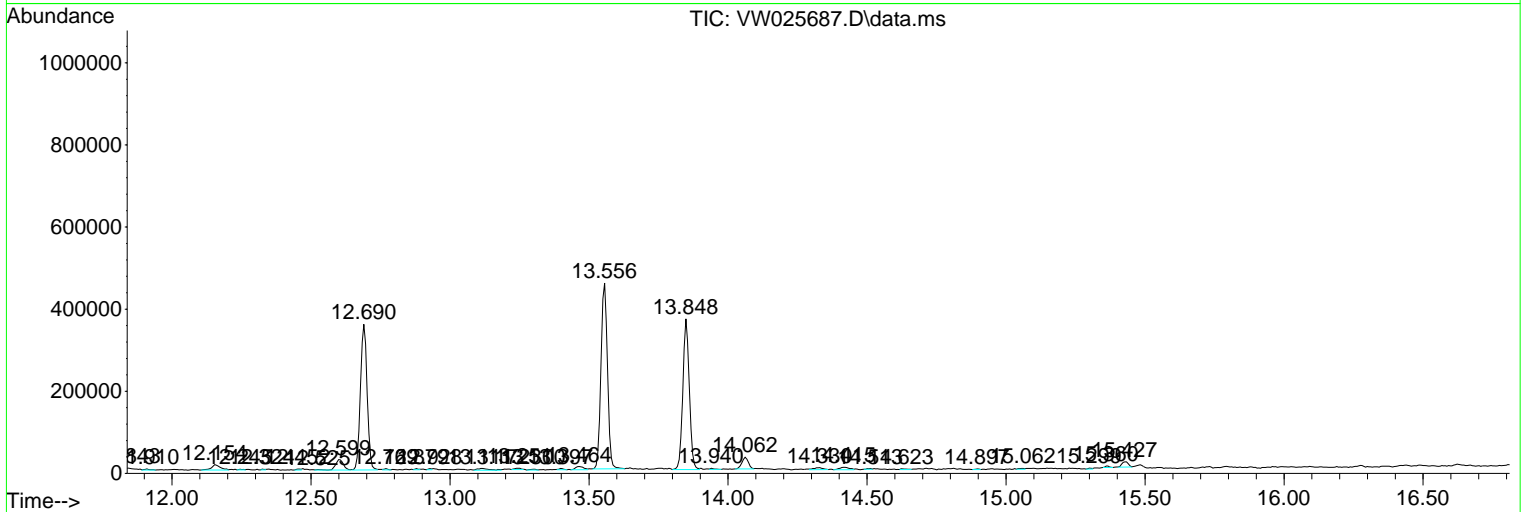
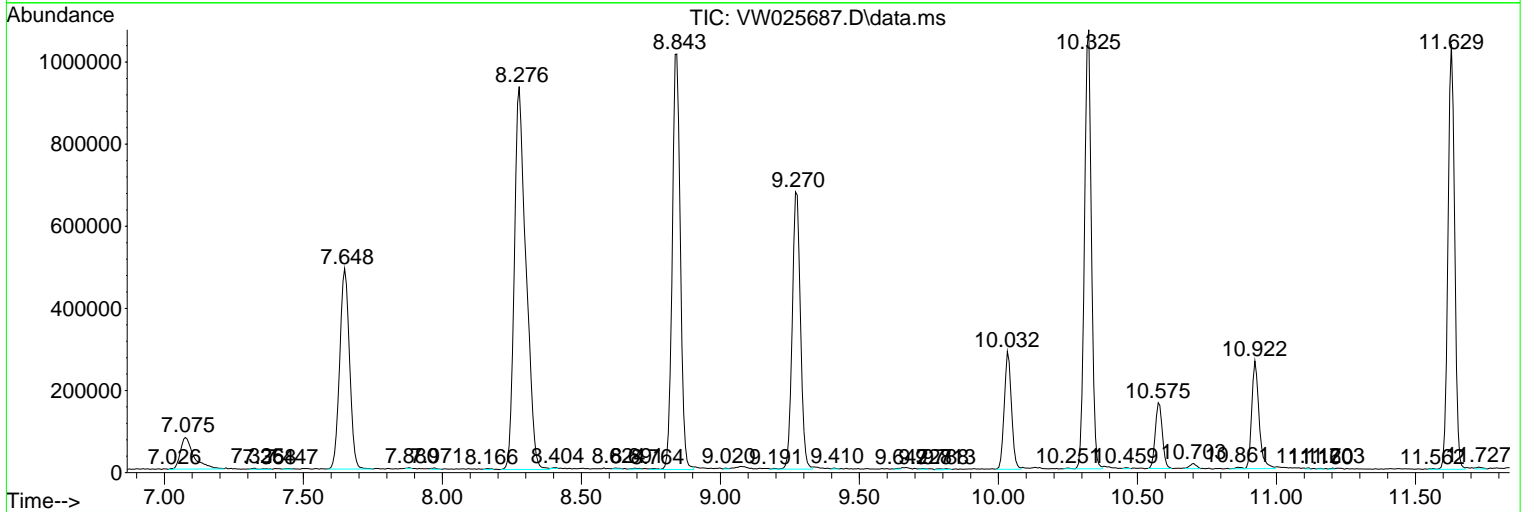
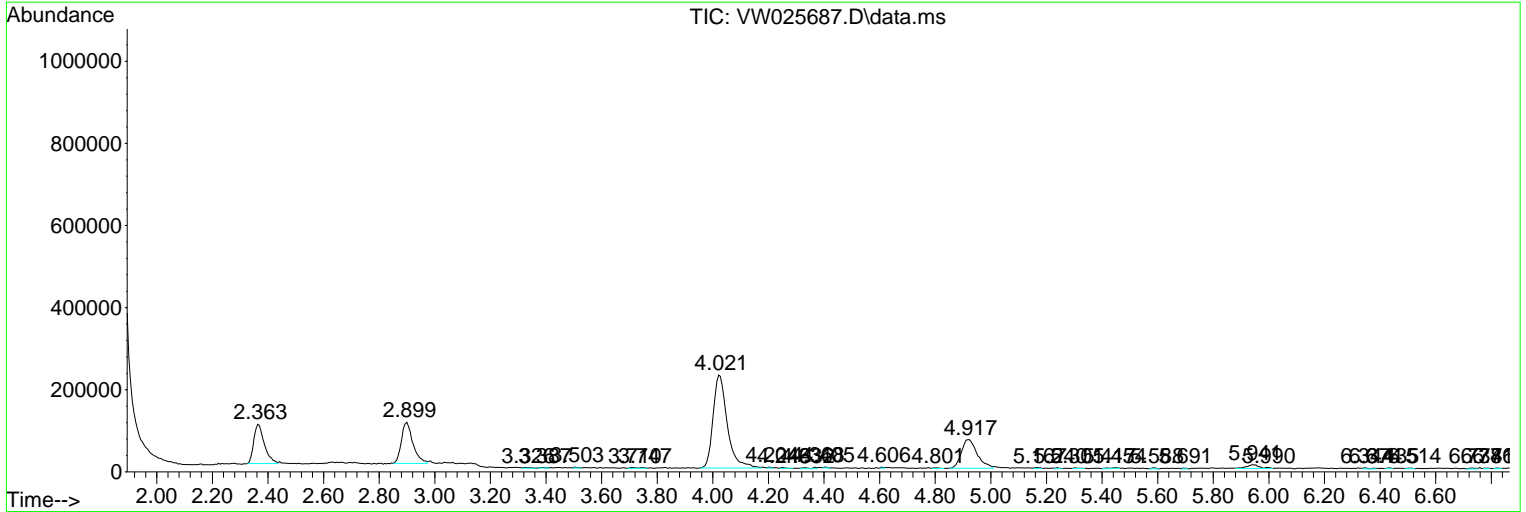
Sum of corrected areas: 16422752

Data Path : Z:\voasrv\HPCHEM1\MSVOA_W\Data\VW042523\
 Data File : VW025687.D
 Acq On : 25 Apr 2023 16:58
 Operator : SY/MD
 Sample : 02479-07RE
 Misc : 5.18g/10mL/MSVOA_W/SOIL
 ALS Vial : 1 Sample Multiplier: 1

Instrument :
 MSVOA_W
 ClientSampleId :
 EW948RE

Quant Method : Z:\voasrv\HPCHEM1\MSVOA_W\Method\SFAMWLM040323SMA.M
 Quant Title : SFAM01.0

TIC Library : C:\Database\NIST20.L
 TIC Integration Parameters: LSCINT.P



Library Search Compound Report

Data Path : Z:\voasrv\HPCHEM1\MSVOA_W\Data\VW042523\
Data File : VW025687.D
Acq On : 25 Apr 2023 16:58
Operator : SY/MD
Sample : 02479-07RE
Misc : 5.18g/10mL/MSVOA_W/SOIL
ALS Vial : 1 Sample Multiplier: 1

Instrument :
MSVOA_W
ClientSampleId :
EW948RE

Quant Method : Z:\voasrv\HPCHEM1\MSVOA_W\Method\SFAMWLM040323SMA.M
Quant Title : SFAM01.0

TIC Library : C:\Database\NIST20.L
TIC Integration Parameters: LSCINT.P

No Library Search Compounds Detected

Data Path : Z:\voasrv\HPCHEM1\MSVOA_W\Data\VW042523\
Data File : VW025687.D
Acq On : 25 Apr 2023 16:58
Operator : SY/MD
Sample : 02479-07RE
Misc : 5.18g/10mL/MSVOA_W/SOIL
ALS Vial : 1 Sample Multiplier: 1

Instrument :
MSVOA_W
ClientSampleId :
EW948RE

Quant Method : Z:\voasrv\HPCHEM1\MSVOA_W\Method\SFAMWLM040323SMA.M
Quant Title : SFAM01.0

TIC Library : C:\Database\NIST20.L
TIC Integration Parameters: LSCINT.P

TIC Top Hit name	RT	EstConc	Units	Response	#	RT	Resp	Conc
------------------	----	---------	-------	----------	---	----	------	------
