

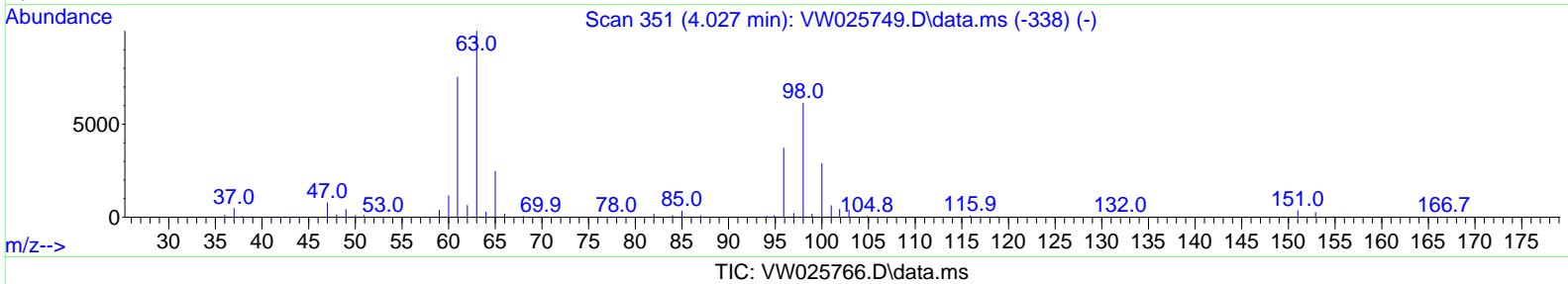
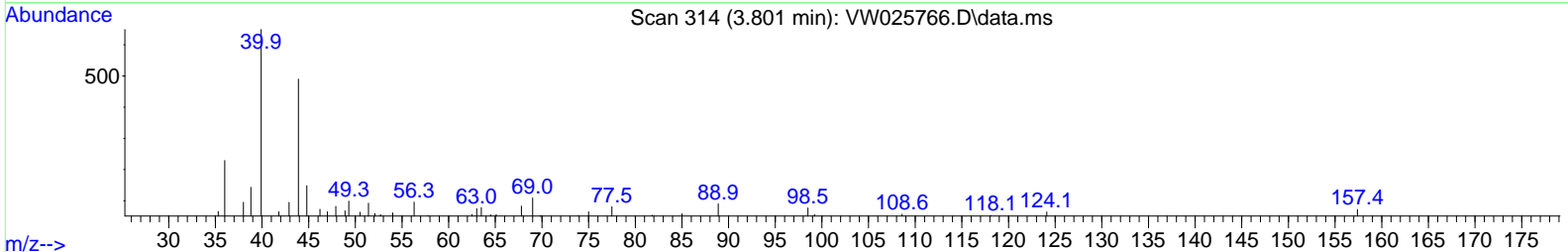
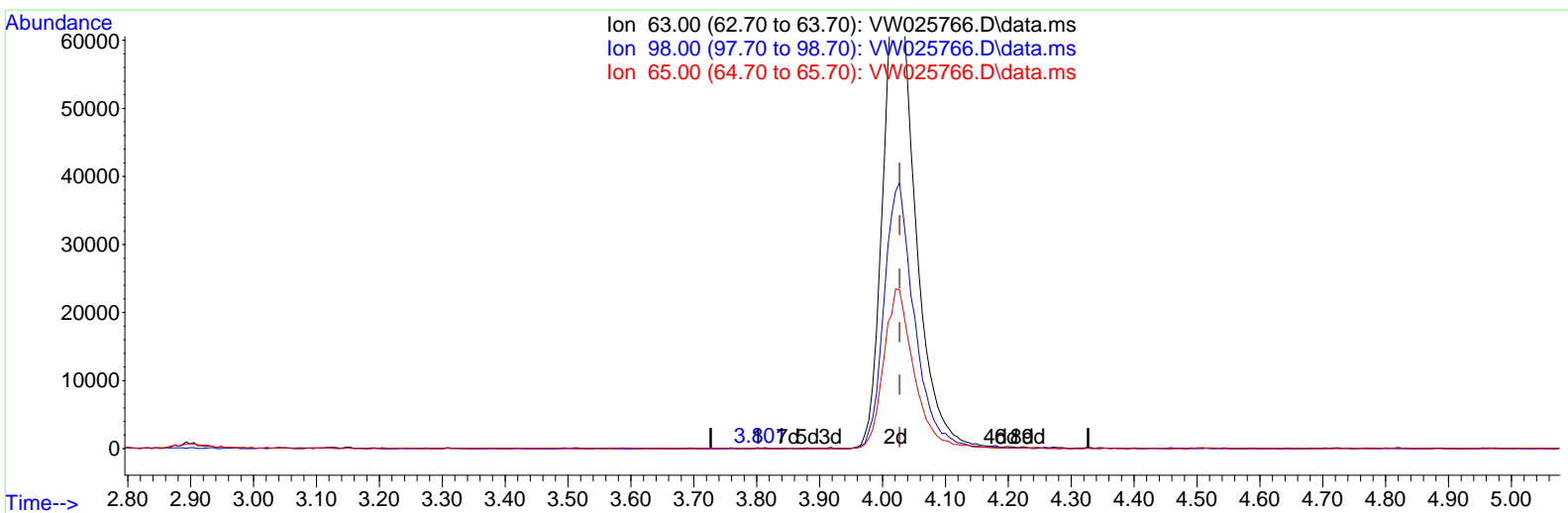
Data Path : Z:\voasrv\HPCHEM1\MSVOA_W\Data\VW042823\
 Data File : VW025766.D
 Acq On : 28 Apr 2023 17:40
 Operator : SY/MD
 Sample : 02526-16
 Misc : 5.89g/10mL/MSVOA_W/SOIL
 ALS Vial : 20 Sample Multiplier: 1

Instrument :
 MSVOA_W
ClientSampleId :
 DCCG0

Manual IntegrationsAPPROVED

Reviewed By :Semsettin Yesilyurt 04/29/2023
 Supervised By :Mahesh Dadoda 05/01/2023

Quant Time: Apr 29 00:25:14 2023
 Quant Method : Z:\voasrv\HPCHEM1\MSVOA_W\Method\SFAMWLM042723SMA.M
 Quant Title : SFAM01.0
 QLast Update : Fri Apr 28 02:55:08 2023
 Response via : Initial Calibration



(11) 1,1-Dichloroethene-d2 (S)

3.801min (-0.226) 0.00 ug/L

response	79	
Ion	Exp%	Act%
63.00	100.00	100.00
98.00	66.90	86.08
65.00	22.30	25.32
0.00	0.00	0.00

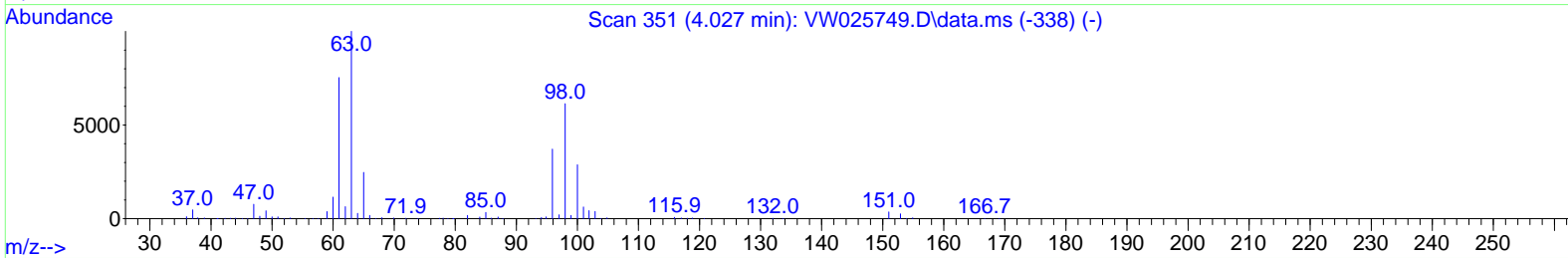
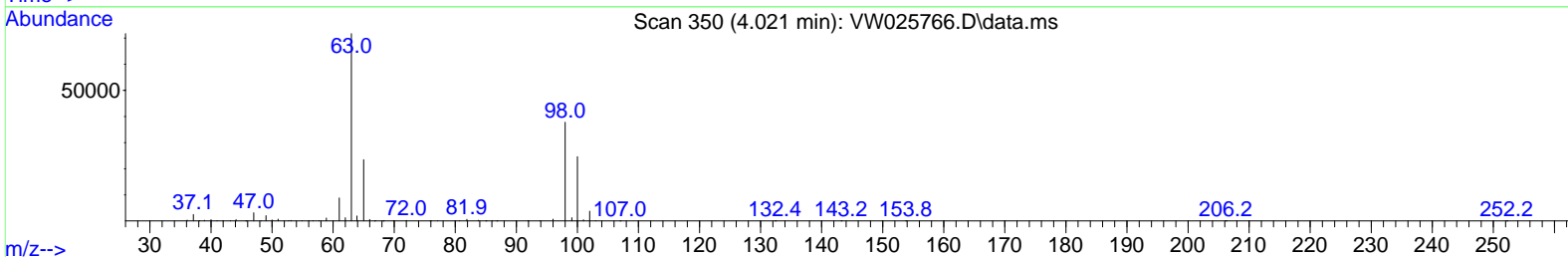
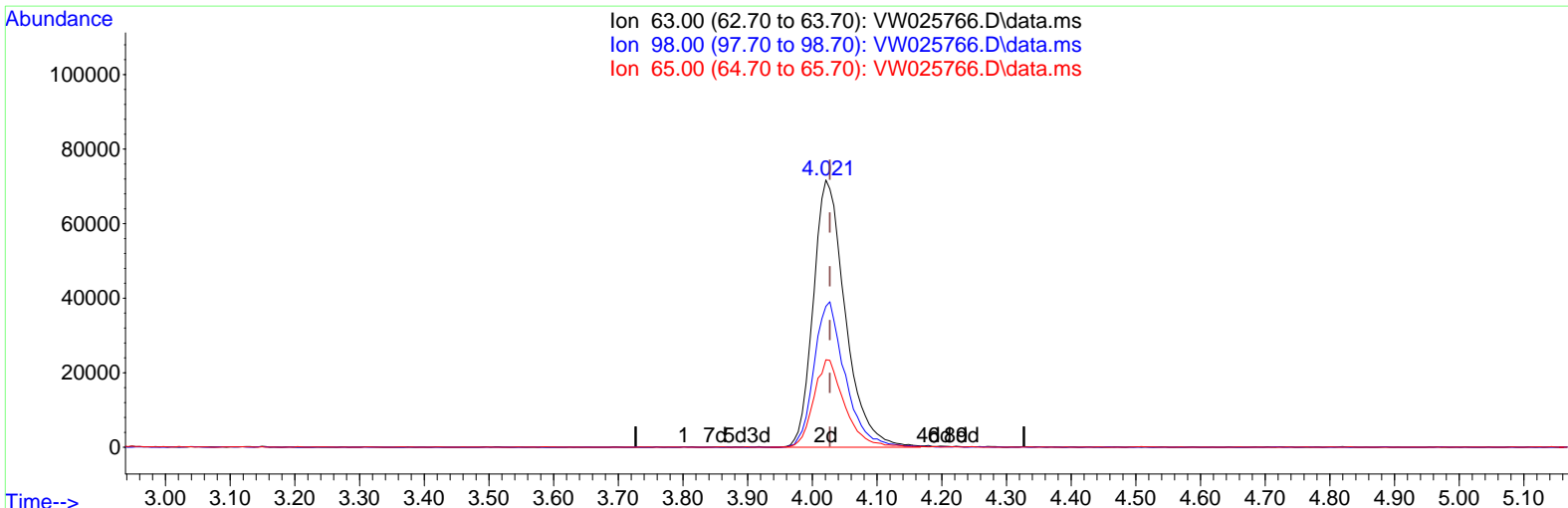
Data Path : Z:\voasrv\HPCHEM1\MSVOA_W\Data\VW042823\
 Data File : VW025766.D
 Acq On : 28 Apr 2023 17:40
 Operator : SY/MD
 Sample : 02526-16
 Misc : 5.89g/10mL/MSVOA_W/SOIL
 ALS Vial : 20 Sample Multiplier: 1

Instrument :
 MSVOA_W
ClientSampleId :
 DCCG0

Manual IntegrationsAPPROVED

Quant Time: Apr 29 00:25:14 2023
 Quant Method : Z:\voasrv\HPCHEM1\MSVOA_W\Method\SFAMWLM042723SMA.M
 Quant Title : SFAM01.0
 QLast Update : Fri Apr 28 02:55:08 2023
 Response via : Initial Calibration

Reviewed By :Semsettin Yesilyurt 04/29/2023
 Supervised By :Mahesh Dadoda 05/01/2023



TIC: VW025766.D\data.ms

(11) 1,1-Dichloroethene-d2 (S)

4.021min (-0.006) 15.07 ug/L m

response 246906

Ion	Exp%	Act%
63.00	100.00	100.00
98.00	66.90	0.03#
65.00	22.30	0.01#
0.00	0.00	0.00

Data Path : Z:\voasrv\HPCHEM1\MSVOA_W\Data\VW042823\
 Data File : VW025766.D
 Acq On : 28 Apr 2023 17:40
 Operator : SY/MD
 Sample : 02526-16
 Misc : 5.89g/10mL/MSVOA_W/SOIL
 ALS Vial : 20 Sample Multiplier: 1

Instrument :
 MSVOA_W
ClientSampleId :
 DCCG0

Manual IntegrationsAPPROVED

Reviewed By :Semsettin Yesilyurt 04/29/2023
 Supervised By :Mahesh Dadoda 05/01/2023

Quant Time: Apr 29 00:25:14 2023
 Quant Method : Z:\voasrv\HPCHEM1\MSVOA_W\Method\SFAMWLM042723SMA.M
 Quant Title : SFAM01.0
 QLast Update : Fri Apr 28 02:55:08 2023
 Response via : Initial Calibration

Compound	R.T.	QIon	Response	Conc	Units	Dev(Min)
Internal Standards						
1) 1,4-Difluorobenzene	8.843	114	588933	25.000	ug/L	0.00
28) Chlorobenzene-d5	11.629	117	554746	25.000	ug/L	0.00
58) 1,4-Dichlorobenzene-d4	13.556	152	273623	25.000	ug/L	0.00
System Monitoring Compounds						
4) Vinyl Chloride-d3	2.363	65	130389	18.150	ug/L	0.00
Spiked Amount	25.000	Range 30 - 150	Recovery =	72.600%		
7) Chloroethane-d5	2.899	69	112440	21.830	ug/L	0.00
Spiked Amount	25.000	Range 30 - 150	Recovery =	87.320%		
11) 1,1-Dichloroethene-d2	4.021	63	246906m	15.074	ug/L	0.00
Spiked Amount	25.000	Range 45 - 110	Recovery =	60.280%		
21) 2-Butanone-d5	7.075	46	166535	70.248	ug/L	0.00
Spiked Amount	50.000	Range 20 - 135	Recovery =	140.500%#		
24) Chloroform-d	7.648	84	369813	23.408	ug/L	0.00
Spiked Amount	25.000	Range 40 - 150	Recovery =	93.640%		
26) 1,2-Dichloroethane-d4	8.307	65	228351	26.512	ug/L	0.00
Spiked Amount	25.000	Range 70 - 130	Recovery =	106.040%		
32) Benzene-d6	8.276	84	717957	21.317	ug/L	0.00
Spiked Amount	25.000	Range 20 - 135	Recovery =	85.280%		
36) 1,2-Dichloropropane-d6	9.270	67	244053	22.403	ug/L	0.00
Spiked Amount	25.000	Range 70 - 120	Recovery =	89.600%		
41) Toluene-d8	10.325	98	630597	21.180	ug/L	0.00
Spiked Amount	25.000	Range 30 - 130	Recovery =	84.720%		
43) trans-1,3-Dichloroprop...	10.574	79	97739	23.023	ug/L	0.00
Spiked Amount	25.000	Range 30 - 135	Recovery =	92.080%		
47) 2-Hexanone-d5	10.922	63	115147	68.055	ug/L	0.00
Spiked Amount	50.000	Range 20 - 135	Recovery =	136.100%#		
56) 1,1,2,2-Tetrachloroeth...	12.690	84	237780	29.616	ug/L	0.00
Spiked Amount	25.000	Range 45 - 120	Recovery =	118.480%		
66) 1,2-Dichlorobenzene-d4	13.848	152	228349	24.359	ug/L	0.00
Spiked Amount	25.000	Range 75 - 120	Recovery =	97.440%		
Target Compounds						
13) Acetone	4.118	43	222020	101.037	ug/L	99
22) 2-Butanone	7.173	43	18436	6.617	ug/L	95

(#) = qualifier out of range (m) = manual integration (+) = signals summed

Data Path : Z:\voasrv\HPCHEM1\MSVOA_W\Data\VW042823\
 Data File : VW025766.D
 Acq On : 28 Apr 2023 17:40
 Operator : SY/MD
 Sample : 02526-16
 Misc : 5.89g/10mL/MSVOA_W/SOIL
 ALS Vial : 20 Sample Multiplier: 1

Instrument :
 MSVOA_W
ClientSampleId :
 DCCG0

Manual IntegrationsAPPROVED

Reviewed By :Semsettin Yesilyurt 04/29/2023
 Supervised By :Mahesh Dadoda 05/01/2023

Quant Time: Apr 29 00:25:14 2023
 Quant Method : Z:\voasrv\HPCHEM1\MSVOA_W\Method\SFAMWLM042723SMA.M
 Quant Title : SFAM01.0
 QLast Update : Fri Apr 28 02:55:08 2023
 Response via : Initial Calibration

