

Data Path : Z:\voasrv\HPCHEM1\MSVOA\_W\Data\VW050223\  
 Data File : VW025802.D  
 Acq On : 02 May 2023 16:14  
 Operator : SY/MD  
 Sample : 02549-11  
 Misc : 5.56g/10mL/MSVOA\_W/SOIL  
 ALS Vial : 1 Sample Multiplier: 1

**Instrument :**  
 MSVOA\_W  
**ClientSampleId :**  
 DCCC8

**Manual Integrations**  
**APPROVED**  
 Reviewed By : Semsettin Yesilyurt 05/03/2023  
 Supervised By : Mahesh Dadoda 05/03/2023

Quant Time: May 03 01:23:57 2023  
 Quant Method : Z:\voasrv\HPCHEM1\MSVOA\_W\Method\SFAMWLM050123SMA.M  
 Quant Title : SFAM01.0  
 QLast Update : Wed May 03 01:20:37 2023  
 Response via : Initial Calibration

Compound	R.T.	QIon	Response	Conc	Units	Dev(Min)
<b>Internal Standards</b>						
1) 1,4-Difluorobenzene	8.843	114	602871	25.000	ug/L	0.00
28) Chlorobenzene-d5	11.629	117	537795	25.000	ug/L	0.00
58) 1,4-Dichlorobenzene-d4	13.555	152	235518	25.000	ug/L	0.00
<b>System Monitoring Compounds</b>						
4) Vinyl Chloride-d3	2.362	65	398284	46.621	ug/L	0.00
Spiked Amount	25.000	Range 30 - 150	Recovery = 186.480%#			
7) Chloroethane-d5	2.899	69	280380	44.269	ug/L	0.00
Spiked Amount	25.000	Range 30 - 150	Recovery = 177.080%#			
11) 1,1-Dichloroethene-d2	4.021	65	186672	43.637	ug/L	0.00
Spiked Amount	25.000	Range 45 - 110	Recovery = 174.560%#			
21) 2-Butanone-d5	7.075	46	236690	83.807	ug/L	0.00
Spiked Amount	50.000	Range 20 - 135	Recovery = 167.620%#			
24) Chloroform-d	7.648	84	682551	39.263	ug/L	0.00
Spiked Amount	25.000	Range 40 - 150	Recovery = 157.040%#			
26) 1,2-Dichloroethane-d4	8.306	65	397521m	40.439	ug/L	0.00
Spiked Amount	25.000	Range 70 - 130	Recovery = 161.760%#			
32) Benzene-d6	8.276	84	1435655	40.855	ug/L	0.00
Spiked Amount	25.000	Range 20 - 135	Recovery = 163.400%#			
36) 1,2-Dichloropropane-d6	9.276	67	454264	40.403	ug/L	0.00
Spiked Amount	25.000	Range 70 - 120	Recovery = 161.600%#			
41) Toluene-d8	10.324	98	1280123	40.852	ug/L	0.00
Spiked Amount	25.000	Range 30 - 130	Recovery = 163.400%#			
43) trans-1,3-Dichloroprop...	10.574	79	178374	39.138	ug/L	0.00
Spiked Amount	25.000	Range 30 - 135	Recovery = 156.560%#			
47) 2-Hexanone-d5	10.922	63	166795	86.998	ug/L	0.00
Spiked Amount	50.000	Range 20 - 135	Recovery = 174.000%#			
56) 1,1,2,2-Tetrachloroeth...	12.690	84	360293	42.043	ug/L	0.00
Spiked Amount	25.000	Range 45 - 120	Recovery = 168.160%#			
66) 1,2-Dichlorobenzene-d4	13.848	152	388479	45.248	ug/L	0.00
Spiked Amount	25.000	Range 75 - 120	Recovery = 181.000%#			
<b>Target Compounds</b>						
13) Acetone	4.118	43	91487	36.532	ug/L	98
16) Methylene chloride	4.917	84	23924	1.924	ug/L	90

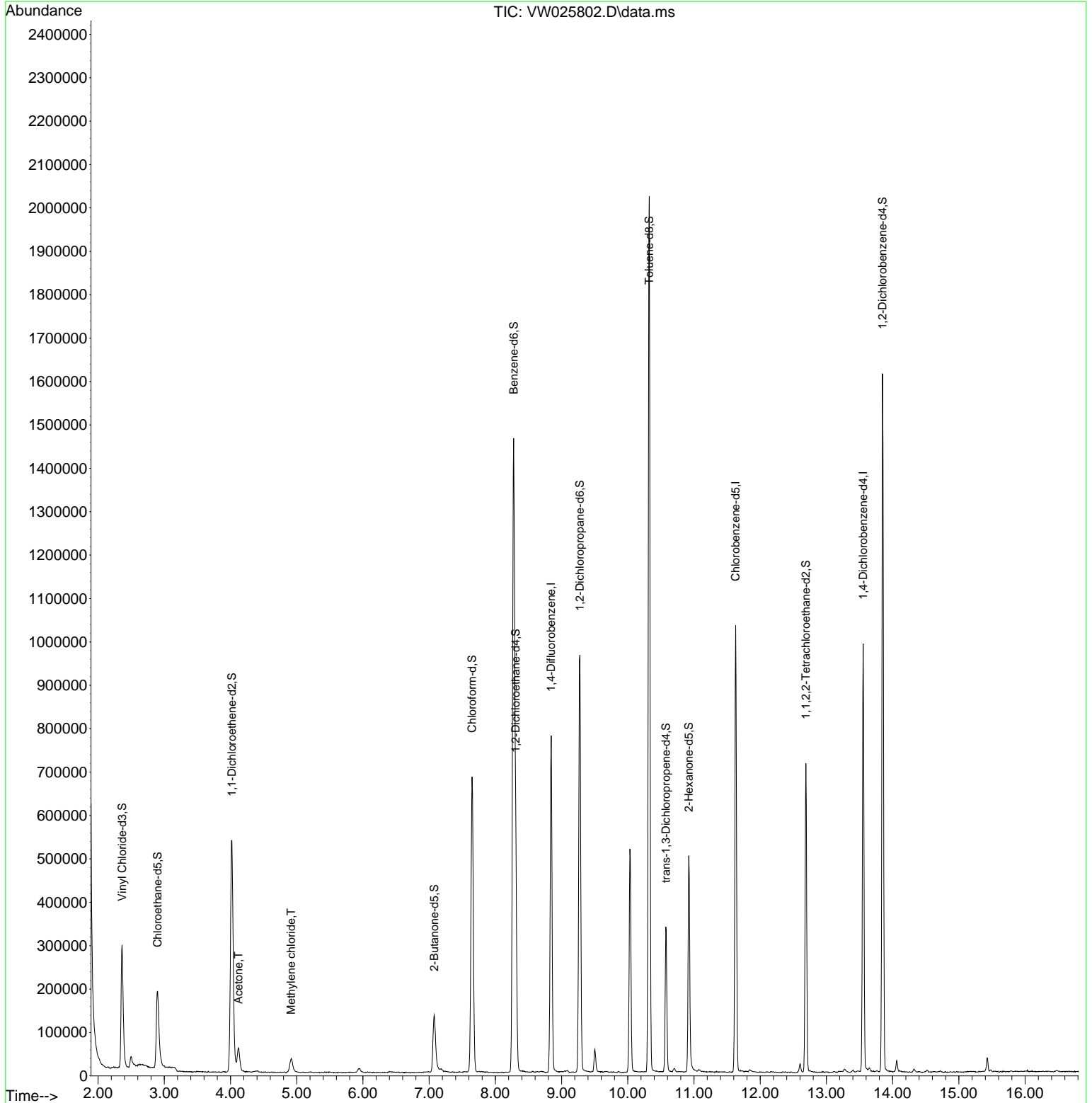
(#) = qualifier out of range (m) = manual integration (+) = signals summed

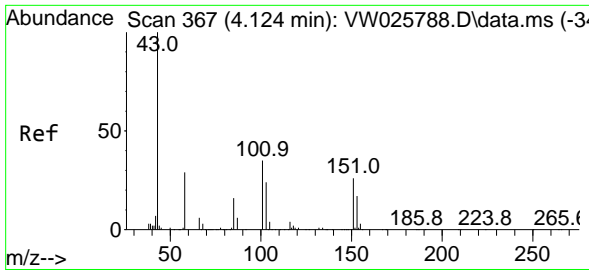
Data Path : Z:\voasrv\HPCHEM1\MSVOA\_W\Data\VW050223\  
 Data File : VW025802.D  
 Acq On : 02 May 2023 16:14  
 Operator : SY/MD  
 Sample : 02549-11  
 Misc : 5.56g/10mL/MSVOA\_W/SOIL  
 ALS Vial : 1 Sample Multiplier: 1

**Instrument :**  
 MSVOA\_W  
**ClientSampleId :**  
 DCCC8

Quant Time: May 03 01:23:57 2023  
 Quant Method : Z:\voasrv\HPCHEM1\MSVOA\_W\Method\SFAMWLM050123SMA.M  
 Quant Title : SFAM01.0  
 QLast Update : Wed May 03 01:20:37 2023  
 Response via : Initial Calibration

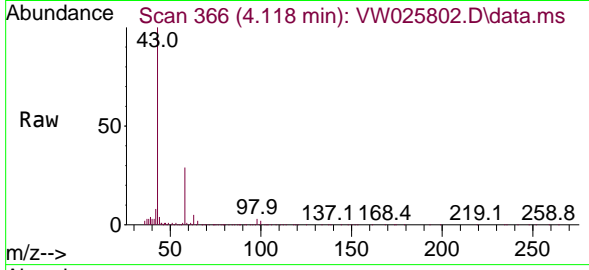
**Manual Integrations**  
**APPROVED**  
 Reviewed By :Semsettin Yesilyurt 05/03/2023  
 Supervised By :Mahesh Dadoda 05/03/2023





#13  
 Acetone  
 Concen: 36.532 ug/L  
 RT: 4.118 min Scan# 30  
 Delta R.T. -0.006 min  
 Lab File: VW025802.D  
 Acq: 02 May 2023 16:14

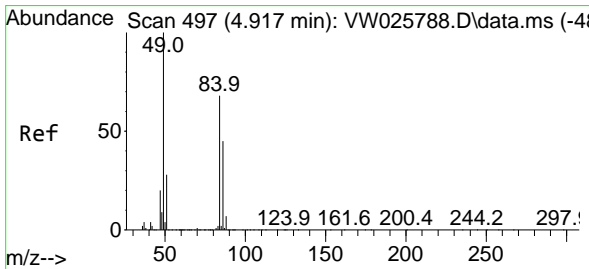
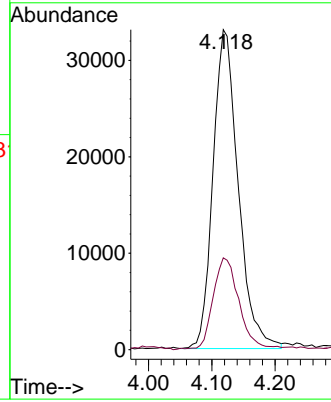
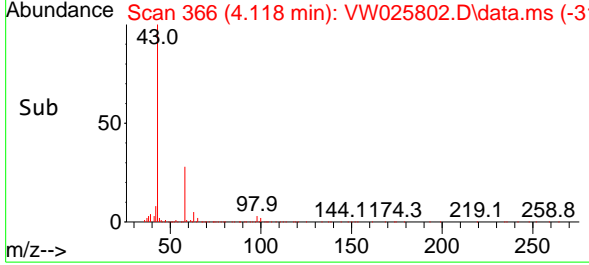
Instrument :  
 MSVOA\_W  
 Client Sample Id :  
 DCCC8



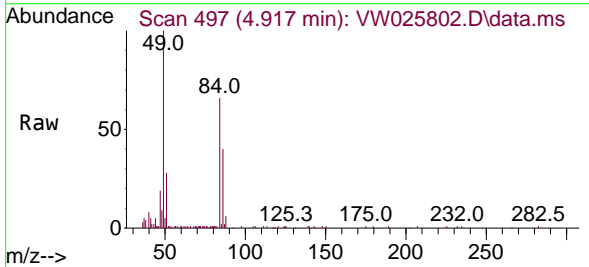
Tgt Ion: 43 Resp: 9148  
 Ion Ratio Lower Upper  
 43 100  
 58 28.1 0.0 58.2

Manual Integrations  
 APPROVED

Reviewed By :Semsettin Yesilyurt 05/03/2023  
 Supervised By :Mahesh Dadoda 05/03/2023



#16  
 Methylene chloride  
 Concen: 1.924 ug/L  
 RT: 4.917 min Scan# 497  
 Delta R.T. -0.000 min  
 Lab File: VW025802.D  
 Acq: 02 May 2023 16:14



Tgt Ion: 84 Resp: 23924  
 Ion Ratio Lower Upper  
 84 100  
 86 60.9 41.7 77.5  
 49 151.6 95.3 177.1

