

Data Path : Z:\voasrv\HPCHEM1\MSVOA_W\Data\VW050322\
 Data File : VW022769.D
 Acq On : 03 May 2022 14:01
 Operator : SY/VA
 Sample : N2639-11
 Misc : 4.86g/10mL/MSVOA_W/SOIL
 ALS Vial : 1 Sample Multiplier: 1

Instrument :
 MSVOA_W
 ClientSampleId :
 EXL21

Integration Parameters: LSCINT.P

Integrator: RTE
 Smoothing : OFF Filtering: 5
 Sampling : 1 Min Area: 0 % of largest Peak
 Start Thrs: 0.2 Max Peaks: 100
 Stop Thrs : 0 Peak Location: TOP

If leading or trailing edge < 100 prefer < Baseline drop else tangent >
 Peak separation: 5

Method : Z:\voasrv\HPCHEM1\MSVOA_W\Method\SFAMWLM050222SMA.M
 Title : SFAM01.0

Signal : TIC: VW022769.D\data.ms

| peak # | R.T. min | first scan | max scan | last scan | PK TY | peak height | corr. area | corr. % max. | % of total |
|--------|----------|------------|----------|-----------|-------|-------------|------------|--------------|------------|
| 1 | 2.355 | 69 | 74 | 84 | rVB | 127471 | 210574 | 18.78% | 2.352% |
| 2 | 2.885 | 156 | 161 | 172 | rVB | 76074 | 163155 | 14.55% | 1.823% |
| 3 | 3.861 | 317 | 321 | 324 | rBV4 | 1086 | 2057 | 0.18% | 0.023% |
| 4 | 3.885 | 324 | 325 | 327 | rBV2 | 1190 | 845 | 0.08% | 0.009% |
| 5 | 4.019 | 337 | 347 | 361 | rVV | 127054 | 385747 | 34.41% | 4.309% |
| 6 | 4.379 | 404 | 406 | 409 | rBV4 | 1143 | 1158 | 0.10% | 0.013% |
| 7 | 4.562 | 434 | 436 | 440 | rVB4 | 637 | 752 | 0.07% | 0.008% |
| 8 | 4.702 | 457 | 459 | 462 | rVB4 | 1068 | 1110 | 0.10% | 0.012% |
| 9 | 4.763 | 466 | 469 | 471 | rVB3 | 1199 | 1229 | 0.11% | 0.014% |
| 10 | 4.781 | 471 | 472 | 475 | rBV3 | 1031 | 1056 | 0.09% | 0.012% |
| 11 | 4.915 | 485 | 494 | 499 | rBV7 | 5500 | 16409 | 1.46% | 0.183% |
| 12 | 5.367 | 562 | 568 | 569 | rBV6 | 1566 | 2147 | 0.19% | 0.024% |
| 13 | 5.421 | 574 | 577 | 578 | rBV2 | 860 | 869 | 0.08% | 0.010% |
| 14 | 5.623 | 608 | 610 | 611 | rVV2 | 1427 | 765 | 0.07% | 0.009% |
| 15 | 5.677 | 617 | 619 | 622 | rVB3 | 852 | 795 | 0.07% | 0.009% |
| 16 | 5.714 | 622 | 625 | 627 | rBV3 | 922 | 1246 | 0.11% | 0.014% |
| 17 | 5.940 | 655 | 662 | 672 | rVB9 | 3405 | 10885 | 0.97% | 0.122% |
| 18 | 6.019 | 672 | 675 | 677 | rBV4 | 706 | 896 | 0.08% | 0.010% |
| 19 | 6.110 | 687 | 690 | 691 | rBV2 | 1332 | 1103 | 0.10% | 0.012% |
| 20 | 6.196 | 701 | 704 | 707 | rBV4 | 777 | 984 | 0.09% | 0.011% |
| 21 | 6.348 | 728 | 729 | 733 | rBV4 | 1140 | 880 | 0.08% | 0.010% |
| 22 | 6.452 | 745 | 746 | 749 | rBV3 | 964 | 1086 | 0.10% | 0.012% |
| 23 | 6.507 | 753 | 755 | 759 | rBV4 | 897 | 988 | 0.09% | 0.011% |
| 24 | 6.982 | 828 | 833 | 836 | rBV5 | 977 | 1432 | 0.13% | 0.016% |
| 25 | 7.080 | 839 | 849 | 857 | rBV2 | 36941 | 106833 | 9.53% | 1.194% |
| 26 | 7.275 | 879 | 881 | 883 | rBV2 | 1091 | 991 | 0.09% | 0.011% |
| 27 | 7.293 | 883 | 884 | 888 | rVB3 | 1493 | 1344 | 0.12% | 0.015% |
| 28 | 7.324 | 888 | 889 | 893 | rBV4 | 1193 | 1466 | 0.13% | 0.016% |
| 29 | 7.421 | 900 | 905 | 907 | rBV6 | 1093 | 1909 | 0.17% | 0.021% |
| 30 | 7.653 | 933 | 943 | 952 | rVB | 194485 | 478387 | 42.67% | 5.344% |
| 31 | 7.830 | 967 | 972 | 973 | rBV5 | 1112 | 1640 | 0.15% | 0.018% |
| 32 | 7.878 | 979 | 980 | 983 | rBV3 | 1266 | 1194 | 0.11% | 0.013% |
| 33 | 8.031 | 1003 | 1005 | 1008 | rBV4 | 970 | 1046 | 0.09% | 0.012% |
| 34 | 8.165 | 1024 | 1027 | 1030 | rBV4 | 937 | 1202 | 0.11% | 0.013% |
| 35 | 8.275 | 1036 | 1045 | 1059 | rBV2 | 371723 | 1121095 | 100.00% | 12.525% |
| 36 | 8.604 | 1097 | 1099 | 1100 | rBV | 969 | 933 | 0.08% | 0.010% |

Data Path : Z:\voasrv\HPCHEM1\MSVOA_W\Data\VW050322\
 Data File : VW022769.D
 Acq On : 03 May 2022 14:01
 Operator : SY/VA
 Sample : N2639-11
 Misc : 4.86g/10mL/MSVOA_W/SOIL
 ALS Vial : 1 Sample Multiplier: 1

Instrument :
 MSVOA_W
 ClientSampleId :
 EXL21

Integration Parameters: LSCINT.P

Integrator: RTE
 Smoothing : OFF
 Sampling : 1
 Start Thrs: 0.2
 Stop Thrs : 0

Filtering: 5
 Min Area: 0 % of largest Peak
 Max Peaks: 100
 Peak Location: TOP

If leading or trailing edge < 100 prefer < Baseline drop else tangent >
 Peak separation: 5

Method : Z:\voasrv\HPCHEM1\MSVOA_W\Method\SFAMWLM050222SMA.M
 Title : SFAM01.0

| | | | | | | | | | |
|----|--------|------|------|------|------|--------|---------|--------|---------|
| 37 | 8.683 | 1111 | 1112 | 1114 | rBV2 | 1266 | 1053 | 0.09% | 0.012% |
| 38 | 8.732 | 1118 | 1120 | 1123 | rBV3 | 827 | 827 | 0.07% | 0.009% |
| 39 | 8.842 | 1128 | 1138 | 1148 | rBV | 409721 | 811306 | 72.37% | 9.064% |
| 40 | 8.988 | 1160 | 1162 | 1165 | rVB4 | 1534 | 1504 | 0.13% | 0.017% |
| 41 | 9.073 | 1173 | 1176 | 1177 | rBV3 | 1422 | 2018 | 0.18% | 0.023% |
| 42 | 9.165 | 1189 | 1191 | 1195 | rVB5 | 1132 | 1054 | 0.09% | 0.012% |
| 43 | 9.201 | 1195 | 1197 | 1198 | rBV | 1067 | 791 | 0.07% | 0.009% |
| 44 | 9.274 | 1201 | 1209 | 1220 | rVV | 256314 | 511912 | 45.66% | 5.719% |
| 45 | 9.445 | 1234 | 1237 | 1240 | rBV5 | 1064 | 1414 | 0.13% | 0.016% |
| 46 | 9.488 | 1242 | 1244 | 1246 | rBV3 | 880 | 939 | 0.08% | 0.010% |
| 47 | 9.573 | 1255 | 1258 | 1261 | rBV5 | 837 | 1468 | 0.13% | 0.016% |
| 48 | 9.665 | 1269 | 1273 | 1279 | rVB8 | 1421 | 2620 | 0.23% | 0.029% |
| 49 | 9.768 | 1287 | 1290 | 1292 | rBV4 | 1079 | 1303 | 0.12% | 0.015% |
| 50 | 9.835 | 1299 | 1301 | 1305 | rBV5 | 938 | 1443 | 0.13% | 0.016% |
| 51 | 9.872 | 1305 | 1307 | 1309 | rVV3 | 1003 | 1039 | 0.09% | 0.012% |
| 52 | 10.036 | 1326 | 1334 | 1344 | rBV | 132135 | 245997 | 21.94% | 2.748% |
| 53 | 10.323 | 1372 | 1381 | 1388 | rBV | 548506 | 966219 | 86.19% | 10.794% |
| 54 | 10.579 | 1416 | 1423 | 1429 | rBV | 87069 | 152209 | 13.58% | 1.700% |
| 55 | 10.701 | 1438 | 1443 | 1446 | rBV5 | 2046 | 4470 | 0.40% | 0.050% |
| 56 | 10.768 | 1448 | 1454 | 1456 | rBV5 | 1435 | 2479 | 0.22% | 0.028% |
| 57 | 10.859 | 1463 | 1469 | 1474 | rBV2 | 26074 | 45417 | 4.05% | 0.507% |
| 58 | 10.927 | 1474 | 1480 | 1489 | rVB | 135880 | 235016 | 20.96% | 2.626% |
| 59 | 11.061 | 1500 | 1502 | 1508 | rVB6 | 2425 | 4651 | 0.41% | 0.052% |
| 60 | 11.207 | 1523 | 1526 | 1527 | rBV3 | 958 | 778 | 0.07% | 0.009% |
| 61 | 11.298 | 1538 | 1541 | 1542 | rBV3 | 879 | 906 | 0.08% | 0.010% |
| 62 | 11.402 | 1554 | 1558 | 1561 | rBV5 | 1133 | 1641 | 0.15% | 0.018% |
| 63 | 11.512 | 1574 | 1576 | 1579 | rBV4 | 922 | 1052 | 0.09% | 0.012% |
| 64 | 11.628 | 1587 | 1595 | 1606 | rVV | 612167 | 1033449 | 92.18% | 11.545% |
| 65 | 11.792 | 1620 | 1622 | 1624 | rBV3 | 960 | 930 | 0.08% | 0.010% |
| 66 | 11.847 | 1626 | 1631 | 1635 | rVB7 | 2127 | 4388 | 0.39% | 0.049% |
| 67 | 11.890 | 1635 | 1638 | 1639 | rBV3 | 860 | 1107 | 0.10% | 0.012% |
| 68 | 11.957 | 1643 | 1649 | 1651 | rBV6 | 1416 | 2209 | 0.20% | 0.025% |
| 69 | 12.377 | 1716 | 1718 | 1720 | rVB3 | 1236 | 888 | 0.08% | 0.010% |
| 70 | 12.432 | 1724 | 1727 | 1729 | rBV3 | 1097 | 1368 | 0.12% | 0.015% |
| 71 | 12.518 | 1739 | 1741 | 1744 | rBV2 | 843 | 957 | 0.09% | 0.011% |
| 72 | 12.603 | 1750 | 1755 | 1762 | rVB9 | 6404 | 13603 | 1.21% | 0.152% |
| 73 | 12.688 | 1762 | 1769 | 1777 | rBV | 235313 | 389215 | 34.72% | 4.348% |
| 74 | 13.060 | 1827 | 1830 | 1831 | rBV2 | 917 | 846 | 0.08% | 0.009% |
| 75 | 13.079 | 1831 | 1833 | 1836 | rVV4 | 931 | 752 | 0.07% | 0.008% |
| 76 | 13.243 | 1857 | 1860 | 1862 | rBV3 | 1915 | 2234 | 0.20% | 0.025% |

Data Path : Z:\voasrv\HPCHEM1\MSVOA_W\Data\VW050322\
 Data File : VW022769.D
 Acq On : 03 May 2022 14:01
 Operator : SY/VA
 Sample : N2639-11
 Misc : 4.86g/10mL/MSVOA_W/SOIL
 ALS Vial : 1 Sample Multiplier: 1

Instrument :
 MSVOA_W
 ClientSampleId :
 EXL21

Integration Parameters: LSCINT.P

Integrator: RTE
 Smoothing : OFF Filtering: 5
 Sampling : 1 Min Area: 0 % of largest Peak
 Start Thrs: 0.2 Max Peaks: 100
 Stop Thrs : 0 Peak Location: TOP

If leading or trailing edge < 100 prefer < Baseline drop else tangent >
 Peak separation: 5

Method : Z:\voasrv\HPCHEM1\MSVOA_W\Method\SFAMWLM050222SMA.M
 Title : SFAM01.0

| | | | | | | | | | |
|-----|--------|------|------|------|------|--------|---------|--------|---------|
| 77 | 13.408 | 1879 | 1887 | 1890 | rBV6 | 4293 | 8872 | 0.79% | 0.099% |
| 78 | 13.469 | 1895 | 1897 | 1900 | rBV4 | 1266 | 1526 | 0.14% | 0.017% |
| 79 | 13.554 | 1904 | 1911 | 1922 | rBV | 669871 | 1080960 | 96.42% | 12.076% |
| 80 | 13.853 | 1950 | 1960 | 1972 | rBV | 486820 | 834161 | 74.41% | 9.319% |
| 81 | 14.060 | 1991 | 1994 | 2001 | rVB | 6113 | 10166 | 0.91% | 0.114% |
| 82 | 14.292 | 2028 | 2032 | 2033 | rBV3 | 1180 | 1716 | 0.15% | 0.019% |
| 83 | 14.322 | 2033 | 2037 | 2043 | rVV5 | 9214 | 15570 | 1.39% | 0.174% |
| 84 | 14.475 | 2060 | 2062 | 2064 | rBV3 | 804 | 981 | 0.09% | 0.011% |
| 85 | 14.584 | 2077 | 2080 | 2082 | rVB3 | 1281 | 1107 | 0.10% | 0.012% |
| 86 | 14.609 | 2082 | 2084 | 2085 | rBV2 | 1513 | 1443 | 0.13% | 0.016% |
| 87 | 14.700 | 2097 | 2099 | 2100 | rVV2 | 1393 | 867 | 0.08% | 0.010% |
| 88 | 14.719 | 2100 | 2102 | 2104 | rVB3 | 1091 | 831 | 0.07% | 0.009% |
| 89 | 14.779 | 2110 | 2112 | 2113 | rBV2 | 1182 | 928 | 0.08% | 0.010% |
| 90 | 14.840 | 2120 | 2122 | 2124 | rBV2 | 1030 | 793 | 0.07% | 0.009% |
| 91 | 14.944 | 2138 | 2139 | 2142 | rVB4 | 1087 | 742 | 0.07% | 0.008% |
| 92 | 15.042 | 2152 | 2155 | 2156 | rBV3 | 1184 | 846 | 0.08% | 0.009% |
| 93 | 15.109 | 2161 | 2166 | 2167 | rBV5 | 1743 | 2534 | 0.23% | 0.028% |
| 94 | 15.249 | 2185 | 2189 | 2191 | rBV5 | 961 | 1250 | 0.11% | 0.014% |
| 95 | 15.468 | 2223 | 2225 | 2226 | rBV2 | 1230 | 1060 | 0.09% | 0.012% |
| 96 | 15.590 | 2242 | 2245 | 2247 | rBV3 | 1519 | 1715 | 0.15% | 0.019% |
| 97 | 15.956 | 2304 | 2305 | 2306 | rBV | 1353 | 734 | 0.07% | 0.008% |
| 98 | 16.419 | 2379 | 2381 | 2383 | rVV3 | 989 | 754 | 0.07% | 0.008% |
| 99 | 16.474 | 2388 | 2390 | 2392 | rBV2 | 1345 | 1037 | 0.09% | 0.012% |
| 100 | 16.724 | 2429 | 2431 | 2432 | rBV2 | 1228 | 879 | 0.08% | 0.010% |

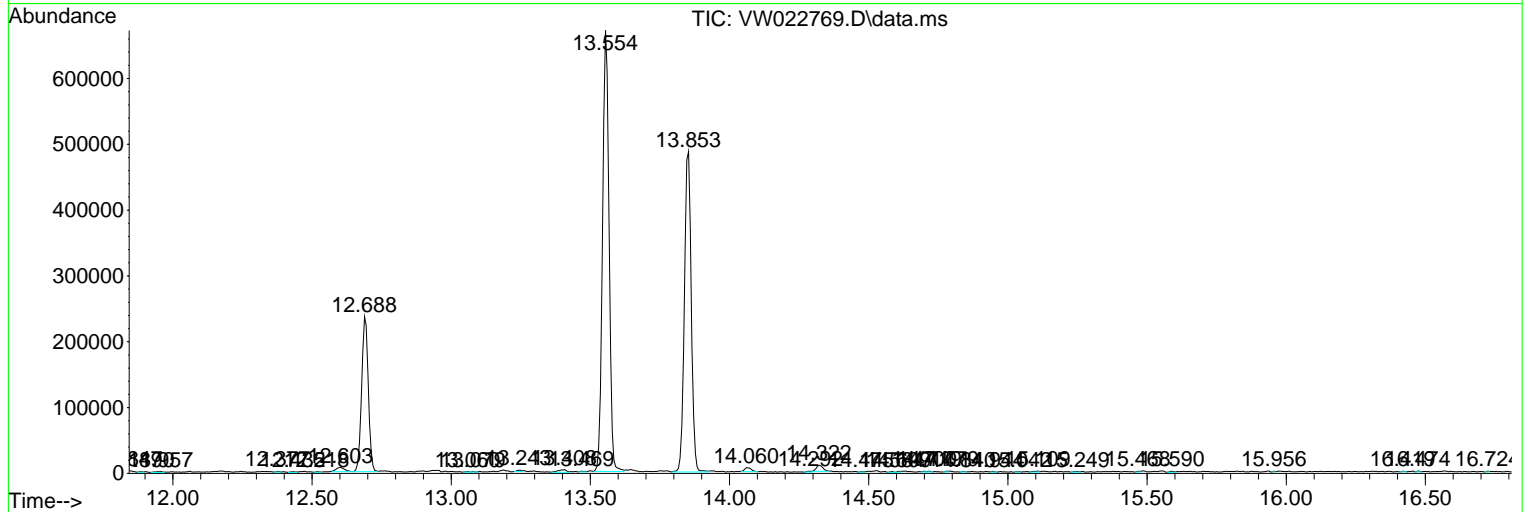
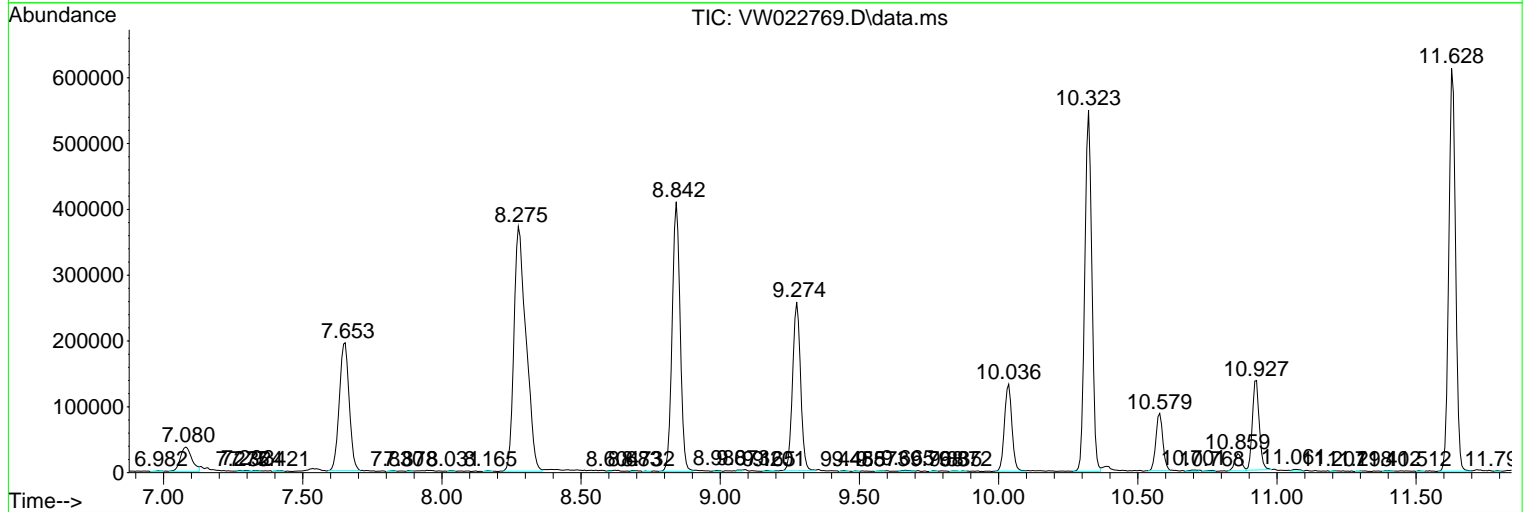
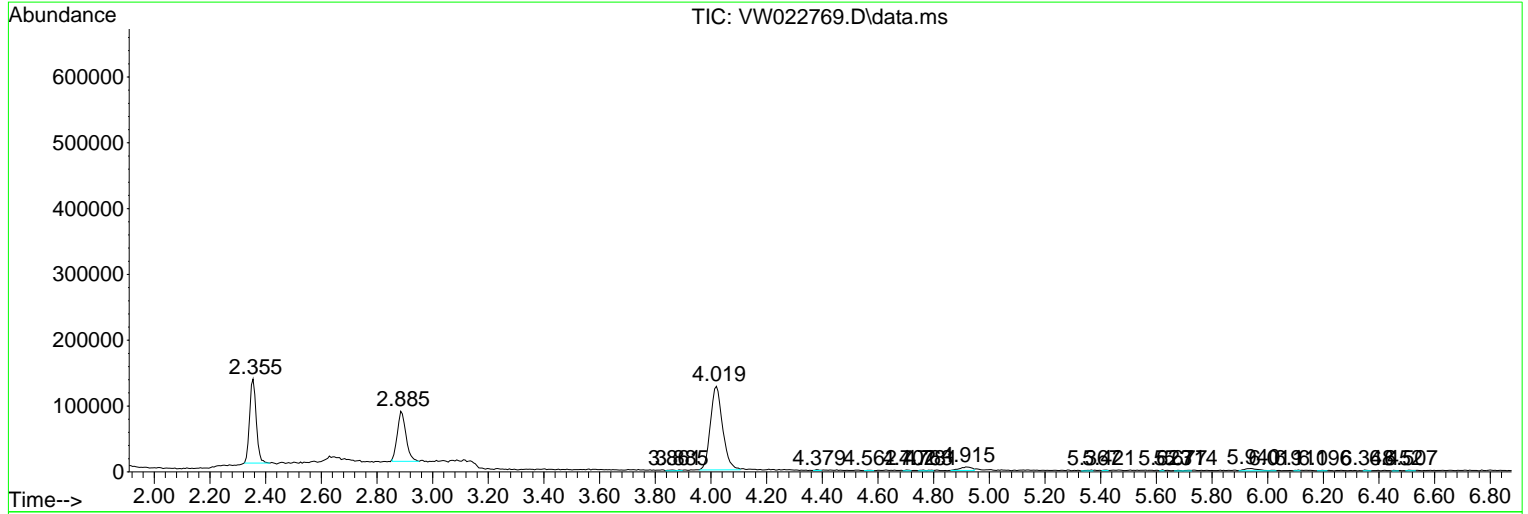
Sum of corrected areas: 8951152

Data Path : Z:\voasrv\HPCHEM1\MSVOA_W\Data\VW050322\
 Data File : VW022769.D
 Acq On : 03 May 2022 14:01
 Operator : SY/VA
 Sample : N2639-11
 Misc : 4.86g/10mL/MSVOA_W/SOIL
 ALS Vial : 1 Sample Multiplier: 1

Instrument :
 MSVOA_W
 ClientSampleId :
 EXL21

Quant Method : Z:\voasrv\HPCHEM1\MSVOA_W\Method\SFAMWLM050222SMA.M
 Quant Title : SFAM01.0

TIC Library : C:\Database\NIST20.L
 TIC Integration Parameters: LSCINT.P



Data Path : Z:\voasrv\HPCHEM1\MSVOA_W\Data\VW050322\
Data File : VW022769.D
Acq On : 03 May 2022 14:01
Operator : SY/VA
Sample : N2639-11
Misc : 4.86g/10mL/MSVOA_W/SOIL
ALS Vial : 1 Sample Multiplier: 1

Instrument :
MSVOA_W
ClientSampleId :
EXL21

Quant Method : Z:\voasrv\HPCHEM1\MSVOA_W\Method\SFAMWLM050222SMA.M
Quant Title : SFAM01.0

TIC Library : C:\Database\NIST0.L
TIC Integration Parameters: LSCINT.P

No Library Search Compounds Detected

Data Path : Z:\voasrv\HPCHEM1\MSVOA_W\Data\VW050322\
Data File : VW022769.D
Acq On : 03 May 2022 14:01
Operator : SY/VA
Sample : N2639-11
Misc : 4.86g/10mL/MSVOA_W/SOIL
ALS Vial : 1 Sample Multiplier: 1

Instrument :
MSVOA_W
ClientSampleId :
EXL21

Quant Method : Z:\voasrv\HPCHEM1\MSVOA_W\Method\SFAMWLM050222SMA.M
Quant Title : SFAM01.0

TIC Library : C:\Database\NIST0.L
TIC Integration Parameters: LSCINT.P

| TIC Top Hit name | RT | EstConc | Units | Response | --Internal Standard-- | | | |
|------------------|----|---------|-------|----------|-----------------------|----|------|------|
| | | | | | # | RT | Resp | Conc |
