

Data Path : Z:\voasrv\HPCHEM1\MSVOA\_W\Data\VW050422\  
 Data File : VW022811.D  
 Acq On : 04 May 2022 18:54  
 Operator : SY/VA  
 Sample : N2638-02  
 Misc : 5.40g/10mL/MSVOA\_W/SOIL  
 ALS Vial : 1 Sample Multiplier: 1

Instrument :  
 MSVOA\_W  
 ClientSampleId :  
 EXKZ3

Quant Time: May 04 23:38:52 2022  
 Quant Method : Z:\voasrv\HPCHEM1\MSVOA\_W\Method\SFAMWLM050222SMA.M  
 Quant Title : SFAM01.0  
 QLast Update : Wed May 04 23:28:03 2022  
 Response via : Initial Calibration

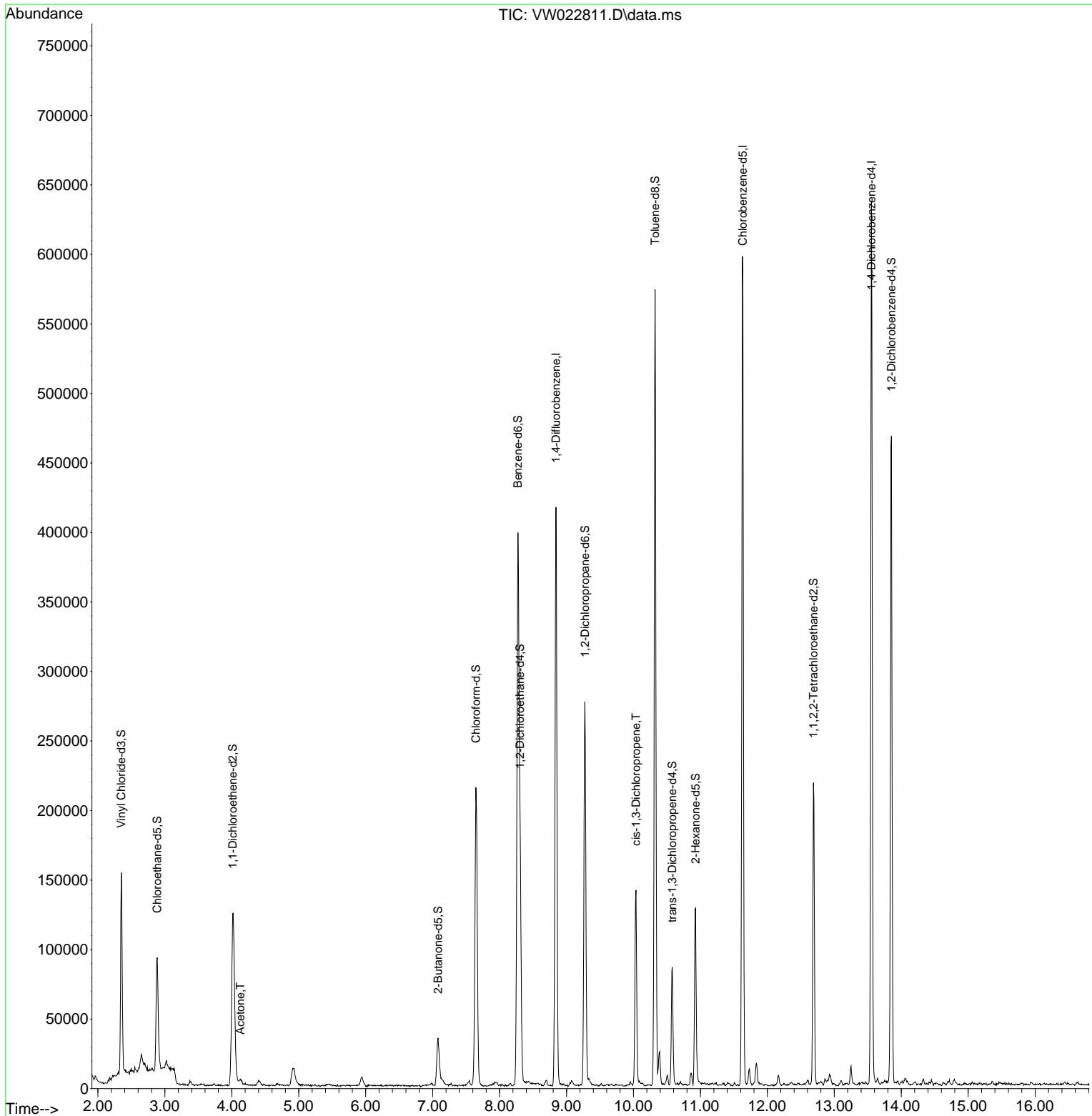
Compound	R.T.	QIon	Response	Conc	Units	Dev(Min)
Internal Standards						
1) 1,4-Difluorobenzene	8.842	114	340343	25.000	ug/L	0.00
28) Chlorobenzene-d5	11.634	117	322645	25.000	ug/L	0.00
58) 1,4-Dichlorobenzene-d4	13.554	152	156269	25.000	ug/L	0.00
System Monitoring Compounds						
4) Vinyl Chloride-d3	2.349	65	137028	19.624	ug/L	0.00
Spiked Amount	25.000	Range 30 - 150	Recovery =	78.480%		
7) Chloroethane-d5	2.885	69	99303	21.860	ug/L	0.00
Spiked Amount	25.000	Range 30 - 150	Recovery =	87.440%		
11) 1,1-Dichloroethene-d2	4.013	63	124051	13.749	ug/L	0.00
Spiked Amount	25.000	Range 45 - 110	Recovery =	55.000%		
21) 2-Butanone-d5	7.080	46	54316	40.912	ug/L	0.00
Spiked Amount	50.000	Range 20 - 135	Recovery =	81.820%		
24) Chloroform-d	7.647	84	210058	21.066	ug/L	0.00
Spiked Amount	25.000	Range 40 - 150	Recovery =	84.280%		
26) 1,2-Dichloroethane-d4	8.305	65	120344	22.005	ug/L	0.00
Spiked Amount	25.000	Range 70 - 130	Recovery =	88.040%		
32) Benzene-d6	8.275	84	402457	21.641	ug/L	0.00
Spiked Amount	25.000	Range 20 - 135	Recovery =	86.560%		
36) 1,2-Dichloropropane-d6	9.274	67	121978	23.350	ug/L	0.00
Spiked Amount	25.000	Range 70 - 120	Recovery =	93.400%		
41) Toluene-d8	10.323	98	372595	20.740	ug/L	0.00
Spiked Amount	25.000	Range 30 - 130	Recovery =	82.960%		
43) trans-1,3-Dichloroprop...	10.579	79	46200	19.207	ug/L	0.00
Spiked Amount	25.000	Range 30 - 135	Recovery =	76.840%		
47) 2-Hexanone-d5	10.927	63	43310	43.430	ug/L	0.00
Spiked Amount	50.000	Range 20 - 135	Recovery =	86.860%		
56) 1,1,2,2-Tetrachloroeth...	12.688	84	101041	20.752	ug/L	0.00
Spiked Amount	25.000	Range 45 - 120	Recovery =	83.000%		
66) 1,2-Dichlorobenzene-d4	13.853	152	110230	20.179	ug/L	0.00
Spiked Amount	25.000	Range 75 - 120	Recovery =	80.720%		
Target Compounds						
13) Acetone	4.129	43	4811	4.840	ug/L	75
39) cis-1,3-Dichloropropene	10.037	75	4592	0.644	ug/L	83

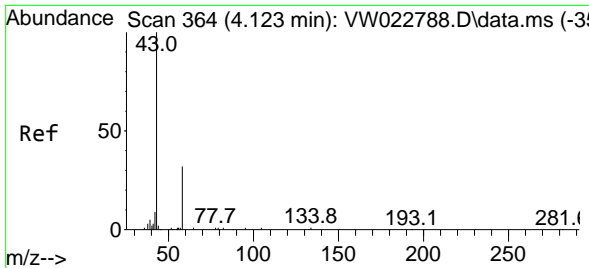
(#) = qualifier out of range (m) = manual integration (+) = signals summed

Data Path : Z:\voasrv\HPCHEM1\MSVOA\_W\Data\VW050422\  
 Data File : VW022811.D  
 Acq On : 04 May 2022 18:54  
 Operator : SY/VA  
 Sample : N2638-02  
 Misc : 5.40g/10mL/MSVOA\_W/SOIL  
 ALS Vial : 1 Sample Multiplier: 1

Instrument :  
 MSVOA\_W  
 ClientSampleId :  
 EXKZ3

Quant Time: May 04 23:38:52 2022  
 Quant Method : Z:\voasrv\HPCHEM1\MSVOA\_W\Method\SFAMWLM050222SMA.M  
 Quant Title : SFAM01.0  
 QLast Update : Wed May 04 23:28:03 2022  
 Response via : Initial Calibration

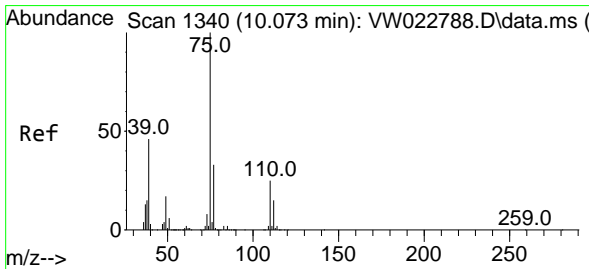
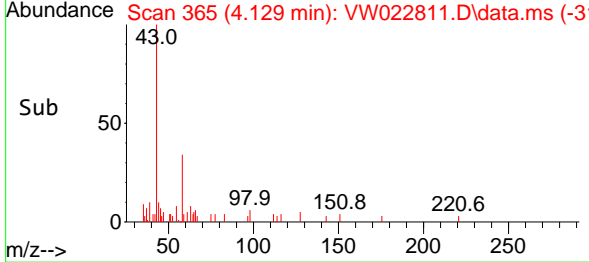
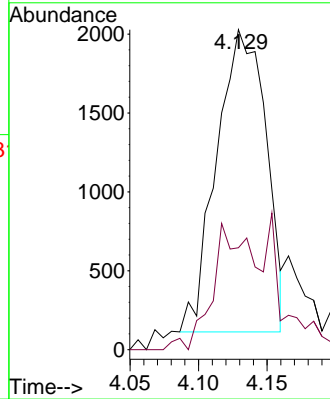
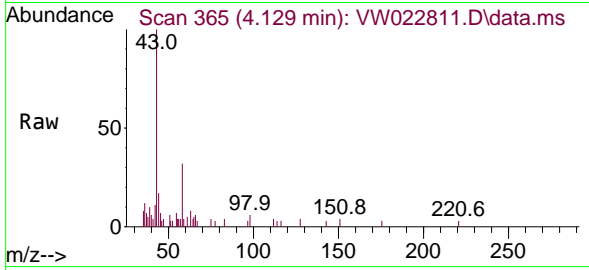




#13  
 Acetone  
 Concen: 4.840 ug/L  
 RT: 4.129 min Scan# 30  
 Delta R.T. 0.006 min  
 Lab File: VW022811.D  
 Acq: 04 May 2022 18:54

Instrument :  
 MSVOA\_W  
 ClientSampleId :  
 EXKZ3

Tgt Ion: 43 Resp: 4811  
 Ion Ratio Lower Upper  
 43 100  
 58 18.0 0.0 64.0



#39  
 cis-1,3-Dichloropropene  
 Concen: 0.644 ug/L  
 RT: 10.037 min Scan# 1334  
 Delta R.T. -0.036 min  
 Lab File: VW022811.D  
 Acq: 04 May 2022 18:54

Tgt Ion: 75 Resp: 4592  
 Ion Ratio Lower Upper  
 75 100  
 77 41.0 22.1 41.1

